

FROM: Mining Recorder at MAVO

TO: Supervising Mining Recorder at Whitehorse, Y.T.



FOL. ACTION ARE:

NEW APPL'N for PLACER LEASE to PROSPECT: Name: _____ Lease No.

RENEWAL APPL'N PLACER LEASE to PROSPECT: Name: _____ Lease No.

AFFIDAVIT of EXPENDITURE on PLACER LEASE. Name: _____ Lease No.

ASSIGNMENT of PLACER LEASE No.
From: _____ To: _____

GROUPING APPL'N UNDER SEC. 52(2) PLACER MINING ACT.
Owner: _____

DIAMOND DRILL LOGS:
Claims: "Doc" 42, 56 Claim sheet no: 106-C-14

QUARTZ ASSESSMENT REPORT:
Claims: _____ Claim sheet no. _____

Type of report: DD LOGS Submitted by: AMAX OF CANADA LIMITED

Cls. work performed on: _____ \$ Req. for ren. application 38419.70

2 HOLES 306 METRES
CORE STORED DOC 57

[Signature]
Signature

REPLY ACTION:

Date Ret. _____

090869

Signature _____

DIAMOND DRILL RECORD

PROPERTY MT. PROFEIT Project Number 1141

Hole No. 81-1 Co-ordinates 0+42 m W Bearing at Collar 310° az.

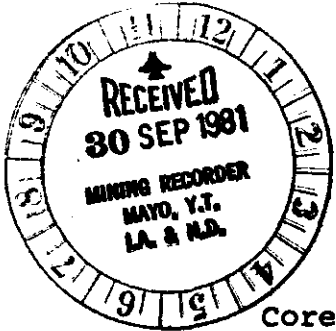
0+40 m S Dip at Collar -60°

Collar Elevation 4,518 feet (1,377 metres) Commenced Drilling July 24, 1981

Total Depth 400 feet (122.0 metres) Completed Drilling July 25, 1981

Claim DOC 57 Logged By: M. McGill

Core Size NQ Coring Method _____ Drilling Contractor Amity Drilling



| <u>Survey Summary</u> | | | | <u>Pertinent Assay Data</u> | | <u>Pertinent Geology</u> | |
|-----------------------|-----------------------|---------|-----------|---|---|--------------------------|---|
| Depth | Dip | Bearing | Method | Interval | % | Interval | Rock Type |
| 400' | -66° (uncorrected) | | Acid etch | | | 0-122 m | Massive, vuggy and/or mottled dolomite. |
| | | | | Traces galena, sphalerite, and pyrite in fractures and vugs to 105 metre depth. | | | |

AMAX MINERALS EXPLORATION

MT. PROFIT PROPERTY

DDH 81-1
SHEET 1 OF 2

| DEPTH METRES | GRAPHIC LOG | | | | % REC. | ASSAY INTERCEPTS | ASSAY DATA | | | | VEINS | | | | % MINERALS | | | | NOTES | |
|--------------|-------------|---------|--------|-------------------|--------|------------------|-------------------------|------|------|------|-------|--|--|--|------------|----|-----|-----|-------------|--|
| | LITH. | BEDDING | FAULTS | NUMBER OF SAMPLES | | | SAMPLE NO. AND INTERVAL | % Zn | % Pb | % Ag | % Cu | | | | | Py | Gal | Sph | | Tetra |
| | | | | | | | | | | | | | | | | | | | 0-3.0 | Overburden - soil |
| | | | | | | | | | | | | | | | | | | | 3.0-5.0 | Boulders |
| | | | | | | | | | | | | | | | | | | | 5.0-7.2 | Vuggy, porosity 2-3% permeability-low vugs 2 mm to 1.5 cm across - barren - grey dolomite - banded appearance |
| | | | | | | | | | | | | | | | | | | | 7.80-11.70 | Mottled, slightly vuggy grey dolomite - porosity - 1-2% permeability - none; barren zone vugs empty, 2 mm to 1 cm across |
| | | | | | | | | | | | | | | | | | | | 11.70-15.60 | Massive vuggy grey dolomite |
| | | | | | | | | | | | | | | | | | | | 15.60-17.4 | Mottled, slightly vuggy grey dolomite - 2.2 mm PbS veins at 17.30 parallel to core axis, 1.5 cm long |
| | | | | | | | | | | | | | | | | | | | 17.14-20.15 | Slightly vuggy grey massive dolomite with mottled portions, overall porosity <1%, permeability-none |
| | | | | | | | | | | | | | | | | | | | 20.15-23.40 | Mottled grey and cream dolomite/calcite. Slightly vuggy - porosity 2% permeability-poor ; PbS veins @ 21.10 and 21.15 with minor finely crystalline pyrite, 2-3 mm PbS cubes @ 21.23 - sulphides associated with very thin (<1 mm) graphitic veinlets, extremely irregular traces - no zinc present with lead - graphitic veinlets present throughout this mottled zone-vugs contain rhombs and blades of calcite; @ 23.30 2 mm galena cubes in split core, no zinc, <1% PbS |
| | | | | | | | | | | | | | | | | | | | 23.40-24.20 | Massive slightly vuggy grey dolomite - porosity 2-3% permeability - low |
| | | | | | | | | | | | | | | | | | | | 24.20-33.00 | Mottled, vuggy grey and cream dolomite/calcite vugs up to 2 cm across lined with prismatic quartz and calcite rhombs and blades 1-3mm across |
| | | | | | | | | | | | | | | | | | | | 33.00-67.67 | Massive grey slightly vuggy (empty) dolomite porosity - <1% permeability - none |

DIAMOND DRILL RECORD

090869

PROPERTY MT. PROFEIT Project Number 1141

Hole No. 81-2 Co-ordinates 3 + 32 m W Bearing at Collar 310° Az.

1 + 69 m S Dip at Collar -60°

Collar Elevation 1,497 metres (4,910 feet) Commenced Drilling July 26, 1981

Total Depth 184.1 metres (604 feet) Completed Drilling August 1, 1981

Claim DOC 42 Logged By: M. McGill

Core Size NQ Coring Method _____ Drilling Contractor Amity Drilling



| <u>Survey Summary</u> | | | | <u>Pertinent Assay Data</u> | | <u>Pertinent Geology</u> | |
|-----------------------|------|---------|--------|-----------------------------|---|--------------------------|--------------------------------------|
| Depth | Dip | Bearing | Method | Interval | % | Interval | Rock Type |
| | None | | | | | 0-184.1 metres | Massive grey dolomite with few vugs. |
| | | | | | Trace galena, sphalerite, and tetrahedrite in fractures and vugs to 55 metre depth. | | |

AMAX MINERALS EXPLORATION

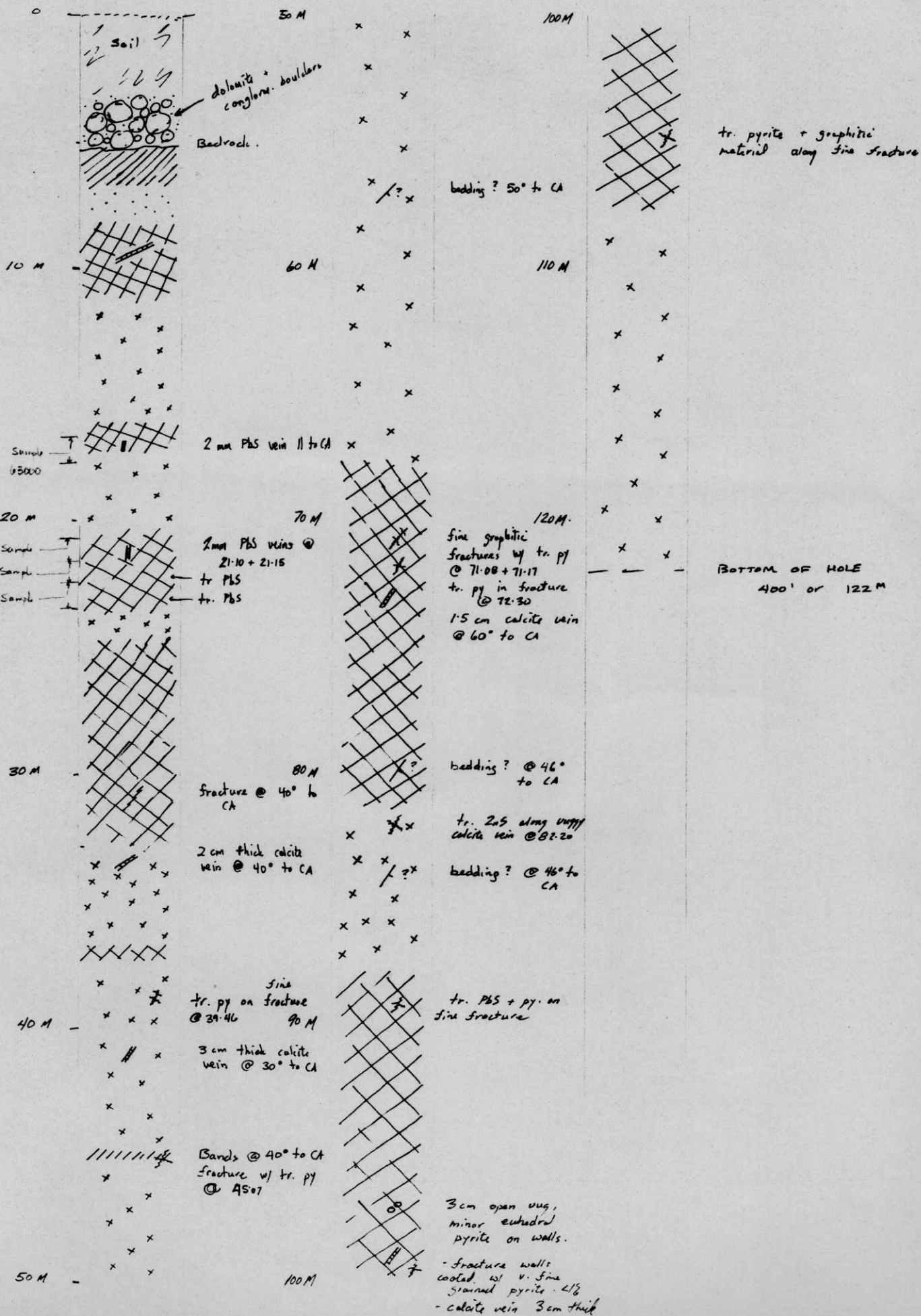
MT. PROFEIT PROPERTY

DDH 81-2
SHEET 1 OF 4

| DEPTH METRES | GRAPHIC LOG | | | | % REC. | ASSAY INTERCEPTS | ASSAY DATA | | | | VEINS | | | | % MINERALS | | | | NOTES |
|--------------|-------------|---------|--------|------------------|--------|------------------|-------------------------|------|------|------|-------|--|--|--|------------|----|-----|-----|--|
| | LITH. | BEDDING | FAULTS | NUMBER OF PIECES | | | SAMPLE NO. AND INTERVAL | % Zn | % Pb | % Ag | % Cu | | | | | Py | Gal | Sph | |
| | | | | | | | | | | | | | | | | | | | 0-1.3 Rubble |
| | | | | | | | | | | | | | | | | | | | 1.3-42.90 Massive grey dolomite with vuggy sections |
| | | | | | | | | | | | | | | | | | | | 1.3-4.8 Trace galena as fracture and vug fillings (to 1 cm across) <1% PbS overall 6.76 - Trace |
| | | | | | | | | | | | | | | | | | | | PbS, tiny vug fillings? 7.9 - Trace pyrite along 2 mm calcite vein, 10.60-Galena and pyrite in three vugs as linings; vugs 1-1.5 |
| | | | | | | | | | | | | | | | | | | | cm across; trace PbS in 1 mm fractures at same footage |
| | | | | | | | | | | | | | | | | | | | 18.80-19 Vein and fracture fillings of galena; patchy |
| | | | | | | | | | | | | | | | | | | | .20 replacements also; to 2 cm across @ 18.95 to 19.20 |
| | | | | | | | | | | | | | | | | | | | 25.3-27.3 Galena in fine fractures (<1%) - core has mottled appearance due to infilled rugs - rare patchy galena replacements to 1 mm in same zone |
| | | | | | | | | | | | | | | | | | | | 28.1 Trace PbS in vuggy fracture filling (1 cm calcite) |
| | | | | | | | | | | | | | | | | | | | 29.65-30 Tetrahedrite crystals 7 mm across in 1 cm |
| | | | | | | | | | | | | | | | | | | | .74 open vugs |
| | | | | | | | | | | | | | | | | | | | Box 7 was upset disarranging core; trace galena and tetrahedrite mineralization in vugs present in this box |
| | | | | | | | | | | | | | | | | | | | 42.90-50.20 Grey dolomite with sporadic, partially to fully infilled vugs and irregular voids 5 mm to 1.5 cm across |
| | | | | | | | | | | | | | | | | | | | 47.40-50 Hairline fractures throughout core - "net .10 texture"; fine scale brecciation associated with fractures |
| | | | | | | | | | | | | | | | | | | | 50.20-53.90 Massive grey dolomite, rare vugs 1-3 mm across, open and empty |

DRILL HOLE 81-1 - MT. PROFIT
 GRAPHIC DRILL LOG 1:200 SCALE (ALL FIGURES IN METRES.)

SURFACE

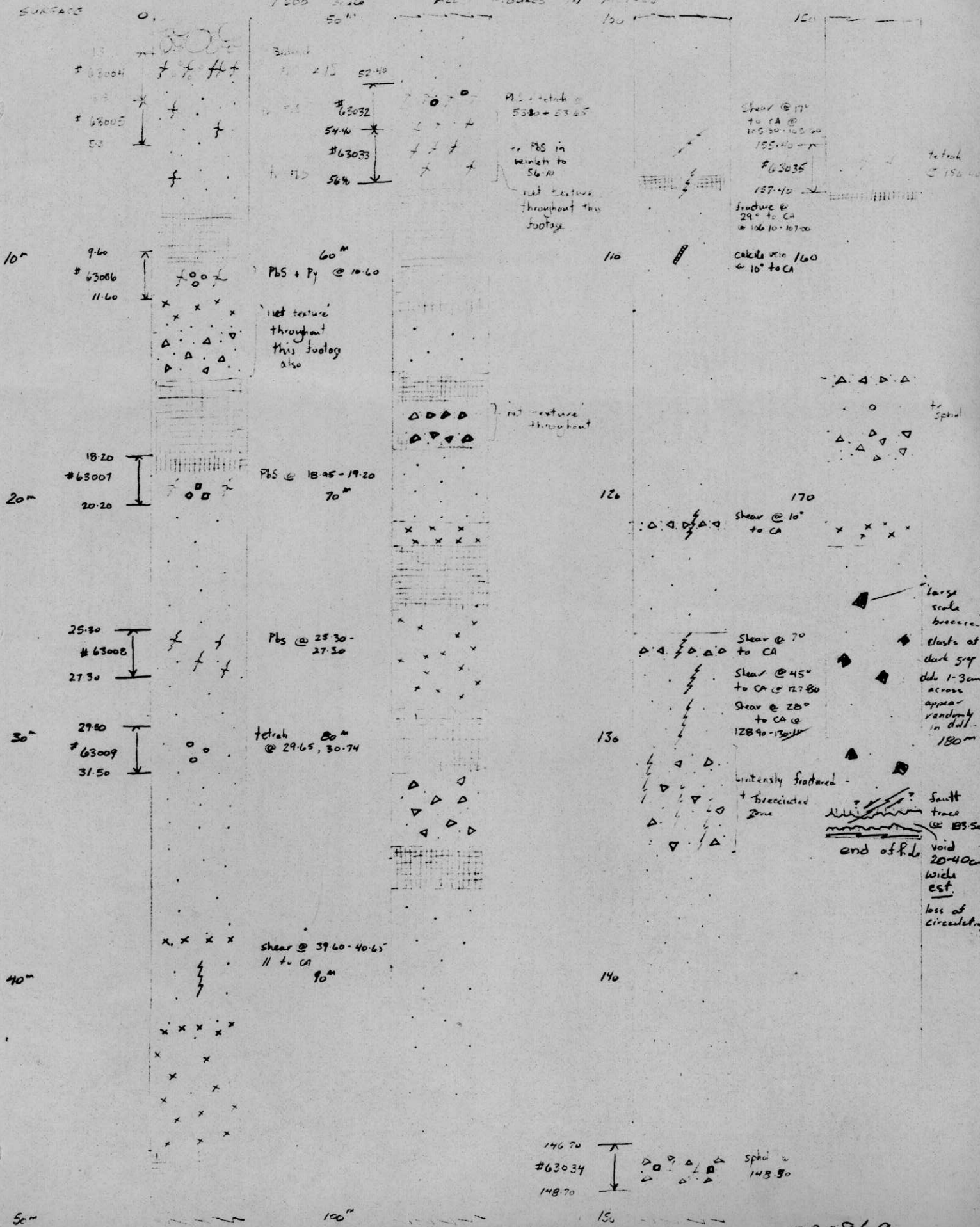


GRAPHIC DRILL LOG

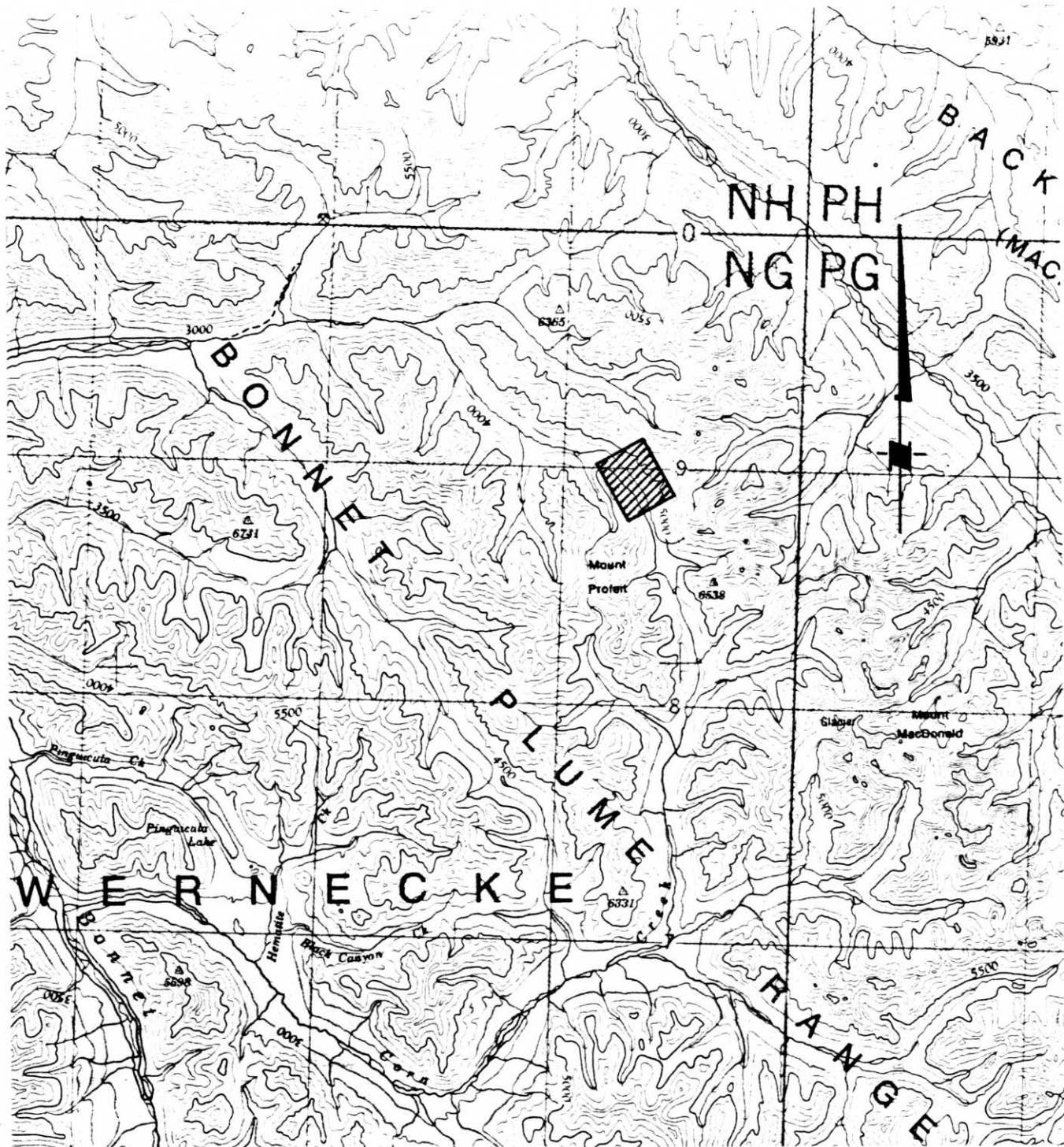
DRILL HOLE #2

MT. PROPER - GRAPHIC DRILL LOG

1200 Scale ALL FIGURES IN METRES



090869

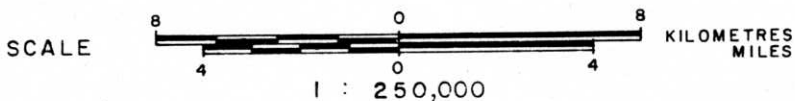


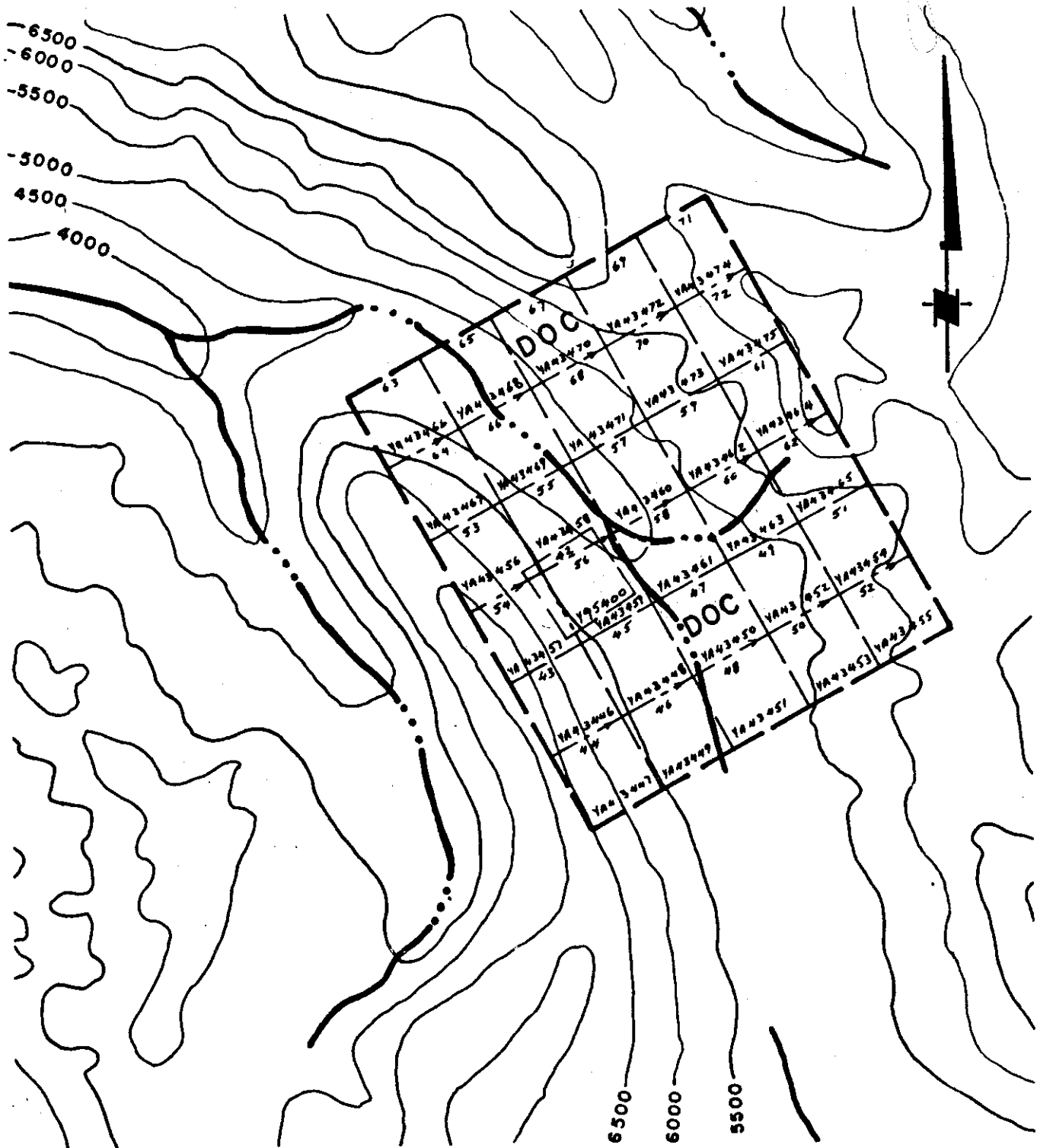
AMAX OF CANADA LIMITED

MOUNT PROFEIT PROPERTY
DOC CLAIMS
 MAYO MINING DISTRICT - YUKON TERRITORY

LOCATION MAP

090869





AMAX OF CANADA LIMITED

MOUNT PROFIT PROPERTY
DOC CLAIMS
 MAYO MINING DISTRICT — YUKON TERRITORY

CLAIM MAP

090869



N.T.S. Ref. 106 C 14



Amity Drilling Limited

Contract Diamond Drilling

10-12th Avenue, Whitehorse, Yukon Y1A 4J4 Telephone (403) 633-2834

Invoice #185 (Cont.)

Standby Time

2 man hrs. @ \$20.30 per hr. = \$ 40.60

Travel Time

4 man hrs. @ \$20.30 per hr. = 81.20

Casing

0-46=46 ft. @ \$27.15 (NW) per ft. = 1,248.90

Coring

8-500=492 ft. @\$24.70 (NQ) per ft. = \$12,152.40

500-587=87ft. @\$25.70 (NQ) per ft. = 2,235.90 14,388.30 \$17,364.80

Supplies Consumed:

10 only pails polydrill @ \$159.50 ea. = \$ 1,595.00

1/2 only bag quik seal @ \$50.00 ea. = 25.00 1,620.00

Board Charges:

July 21-31/81

25 man days @ \$15.00 per day = 10

150.00

375.00

38,419.70

\$38,776.40

TOTAL INVOICE

| | |
|--------------------|-------------------|
| ADD & EXT. CORRECT | |
| <i>Blind</i> | <i>Sept 21/81</i> |
| 1141 86810 | 38,269.70 |
| 1141 86920 | 150.00 |
| | <u>38,419.70</u> |

CK. 21998 SEP 21 1981



Amity Drilling Limited

Contract Diamond Drilling
10-12th Avenue, Whitehorse, Yukon Y1A 4J4 Telephone (403) 633-2834



Invoice #185

July 31, 1981

IN ACCOUNT WITH:

AMAX of Canada Limited
601 - 535 Thurlow St.
Vancouver, B.C.

Drilling charges July 18-31, 1981 (Mt. Profeit project).

Mobilization:

Re: clause 11b of contract
✓ 1/2 x \$5,300.00 =

\$ 2,650.00

Moving in - Mayo to property

Labour

✓ 312 man hrs. @ \$20.30 per hr. =

\$ 6,333.60

Board

July 18-21/81

Genier Enterprises Ltd. #48424

~~131.70~~

Rooms

July 18-21/81

Chateau Mayo - to follow

-

6,333.60
~~6,465.30~~

Hole: 81-1x60°xNQ

Reaming Cave

8 man hrs. @ \$20.30 per hr. =

\$ 162.40

4 machine hrs. @ \$9.00 per hr. =

36.00

\$ 198.40

Mud Time

6 man hrs. @ \$20.30 per hr. =

\$ 121.80

3 machine hrs. @ \$9.00 per hr. =

27.00

148.80

Testing

2 man hrs. @ \$20.30 per hr. =

\$ 40.60

1 machine hr. @ \$9.00 per hr. =

9.00

49.60

Casing

0-10=10 ft. @ \$27.15 (NW) per ft. =

271.50

Coring

10-400=390 ft. @ \$24.70 (NQ) per ft. =

9,633.00

10,301.30

Hole: 81-2x60°xNQ

Moving

✓ 62 man hrs. @ \$20.30 per hr. =

\$ 1,258.60

090869

Mud Time

14 man hrs. @ \$20.30 per hr. =

\$ 284.20

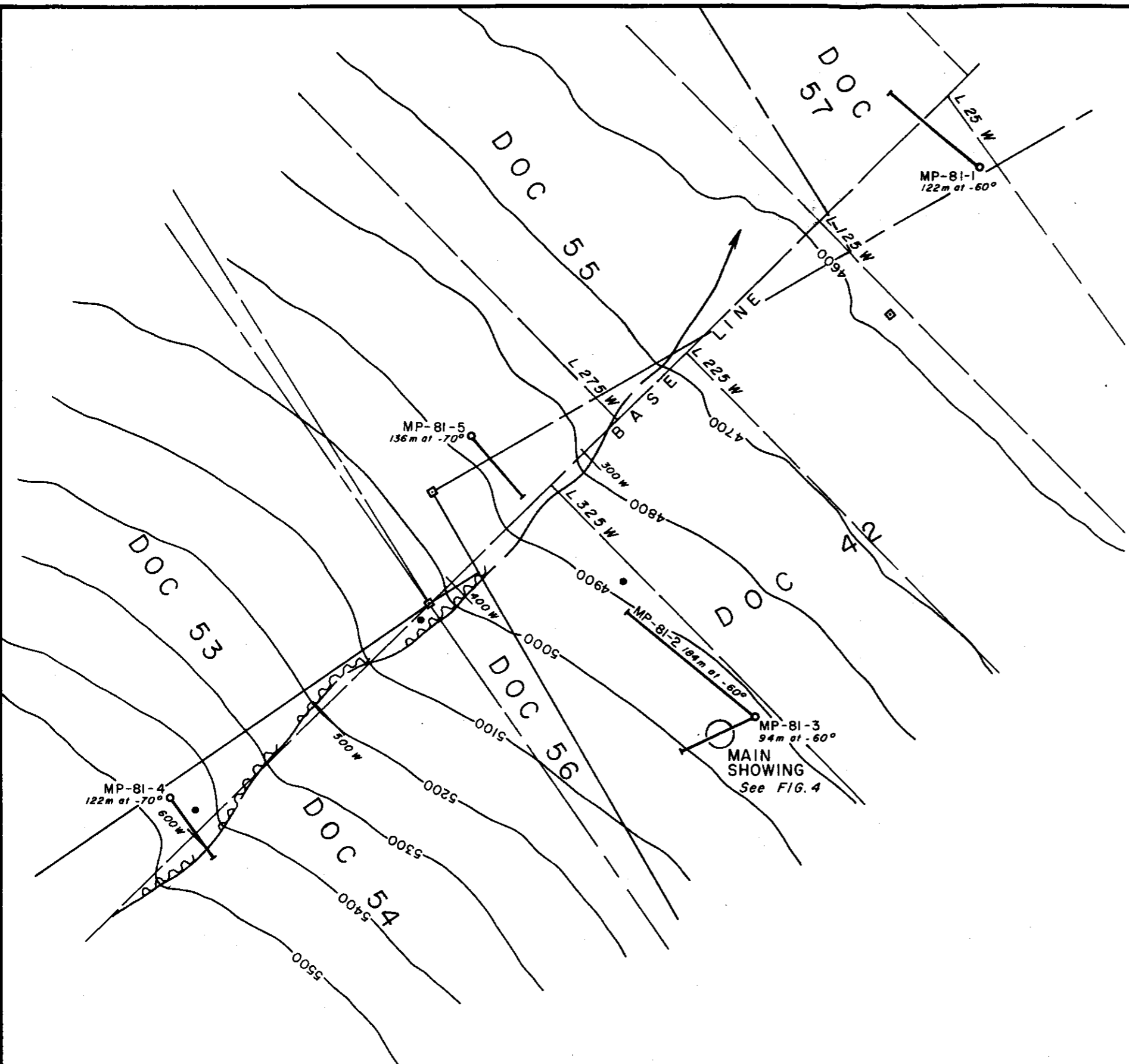
7 machine hrs. @ \$9.00 per hr. =

63.00

347.20

090869

CK 21998 SEP 21 1981



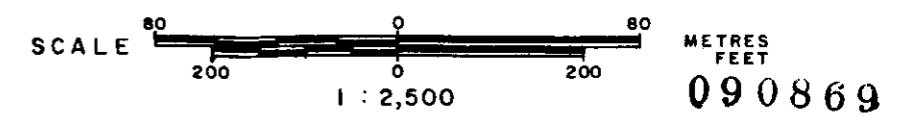
LEGEND

- Collar location and horizontal projection of diamond drill hole.
- Mineral showing.
- Fault
- Claim post, claim location line.
- Claim boundary.
- Flagged grid line.
- 5000 Topographic contour (contour interval 100').
- Stream.

AMAX OF CANADA LIMITED

MOUNT PROFETIT PROPERTY
DOC CLAIMS
MAYO MINING DISTRICT - YUKON TERRITORY

DIAMOND DRILL HOLE LOCATION



Vancouver -

H.P.