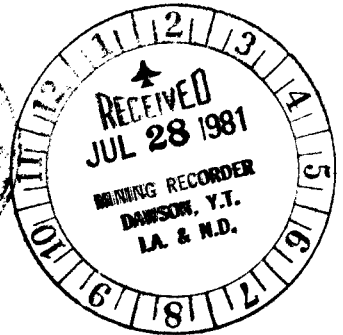
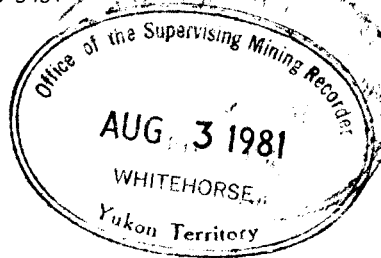


Suite 200, 4299 Cañada Way, Burnaby, B.C. V5G 1H4
Telephone (604) 437-9491



ASSESSMENT REPORT

GEOCHEMICAL SOIL and ROCK SURVEY and GEOLOGICAL MAPPING
of the TS-1 to TS-16 MINERAL
CLAIMS

DAWSON MINING DISTRICT

N.T.S. 116B/14 and 116B/15

Latitude 64°49'30"N
Longitude 139°W

by
Frederick Felder, M.Sc.

Work Done: July 11-23 and 28th, 1980
Date of Report: June 1981
Owner: UMEX Inc.

090855

This report has been examined by the Geological Evaluation Unit and is recommended to the Commissioner to be considered as representation work in the amount of \$ 2,000.00

~~Resident Geologist or
Resident Mining Engineer~~

~~Considered as representation work under
Section 53 (4) Yukon Quartz Mining Act.~~

Ruth Debicki *Oct 1/81*

Commissioner of Yukon Territory
for

T A B L E O F C O N T E N T S

	page
INTRODUCTION	1
PROPERTY AND ASSESSMENT APPLICATION	1
GEOLOGY	1
GEOCHEMICAL SURVEYS	2
DISCUSSION OF THE RESULTS OF 1980 PROGRAM	3
CONCLUSIONS	3

F I G U R E S

	following page
1) LOCATION OF TS CLAIMS	1
2) TS CLAIMS SURVEY AREA	1
3) TS CLAIMS - GEOLOGY	in pocket
4) TS CLAIMS - CUMULATIVE PER CENT VERSUS LEAD-ZINC CONTENT OF SOILS (317 SAMPLES)	2
5) TS CLAIMS - CUMULATIVE PER CENT VERSUS COPPER-SILVER CONTENT OF SOILS (317 SAMPLES)	2
6) TS CLAIMS - SOIL GEOCHEMISTRY - LEAD	in pocket
7) TS CLAIMS - SOIL GEOCHEMISTRY - ZINC	in pocket
8) TS CLAIMS - SOIL GEOCHEMISTRY - SILVER	in pocket
9) TS CLAIMS - SOIL GEOCHEMISTRY - COPPER	in pocket

A P P E N D I C E S

- I - STATEMENT OF EXPENDITURES - TS CLAIMS
- II - AUTHOR'S QUALIFICATIONS

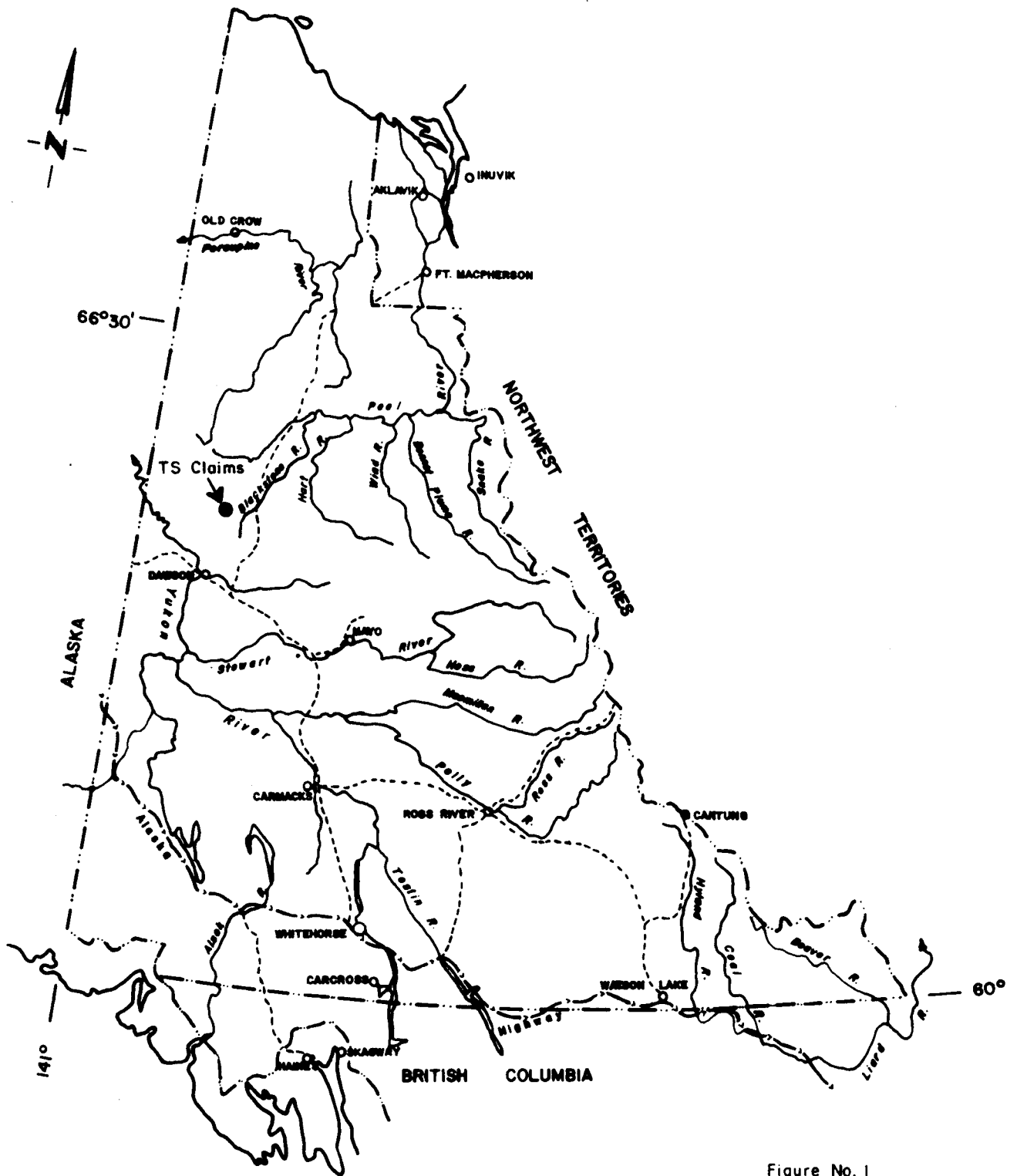


Figure No. 1

YUKON TERRITORY
 Location
 of
 TS Claims

SCALE 0 50 100 miles

To accompany assessment report on geochemical soil and rock survey and geological mapping of the TS-1 to TS-16 mineral claims, Dawson Mining District, by F. Felder, dated June 1981.

UMEX CORPORATION LTD.

ASSESSMENT REPORT

Geochemical Soil and Rock Survey and Geological Mapping on the TS-1 to 16 Mineral Claims

I INTRODUCTION

In the period of the 11th to the 23rd of July a soil and rock geochemical survey was conducted on the TS-1 to TS-16 mineral claims in the Dawson District of the Yukon. Concomitantly with the geochemical survey the area was mapped.

The geochemical sampling was done by Mr. Nigel Spaxman, while the mapping was carried out by Mr. Robin Tolbert.

The claims are located approximately 6 miles west-northwest of Caldwell Lake on the Blackstone River at longitude 139°W and latitude 64°49'30"N (Figure 1).

II PROPERTY AND ASSESSMENT APPLICATION

Even though the work was distributed fairly evenly over the claims we have applied for grouping of the claims. Following the application of the 1980 work, the claims have the following work credits (Figure 2):

Claim	Reg. No.	Years	Claim	Reg. No.	Years
TS-1	YA52797	5	TS-9	YA52805	5
TS-2	YA52798	5	TS-10	YA52806	5
TS-3	YA52799	5	TS-11	YA52807	5
TS-4	YA52800	5	TS-12	YA52808	5
TS-5	YA52801	5	TS-13	YA52809	5
TS-6	YA52802	5	TS-14	YA52810	5
TS-7	YA52803	5	TS-15	YA52811	5
TS-8	YA52804	5	TS-16	YA52812	5

The cost of the surveys was \$8,933.75 and is described in detail in Appendix I.

III GEOLOGY

A. Regional Geological Setting

The claims are underlain by Cambro-Ordovician grey black carbonate which constitutes the oldest units in the immediate area. Overlying these there occur Siluro-Devonian graphitic carbonaceous shales, argillites, siltstone and minor limestone. The youngest unit present in the area of the claim are Devonian cherts and silicious argillites. The Siluro-Devonian unit is the host of barite rich horizons.

Structurally the area is characterized by a series of predominantly east west fairly tight synclines and anticlines.

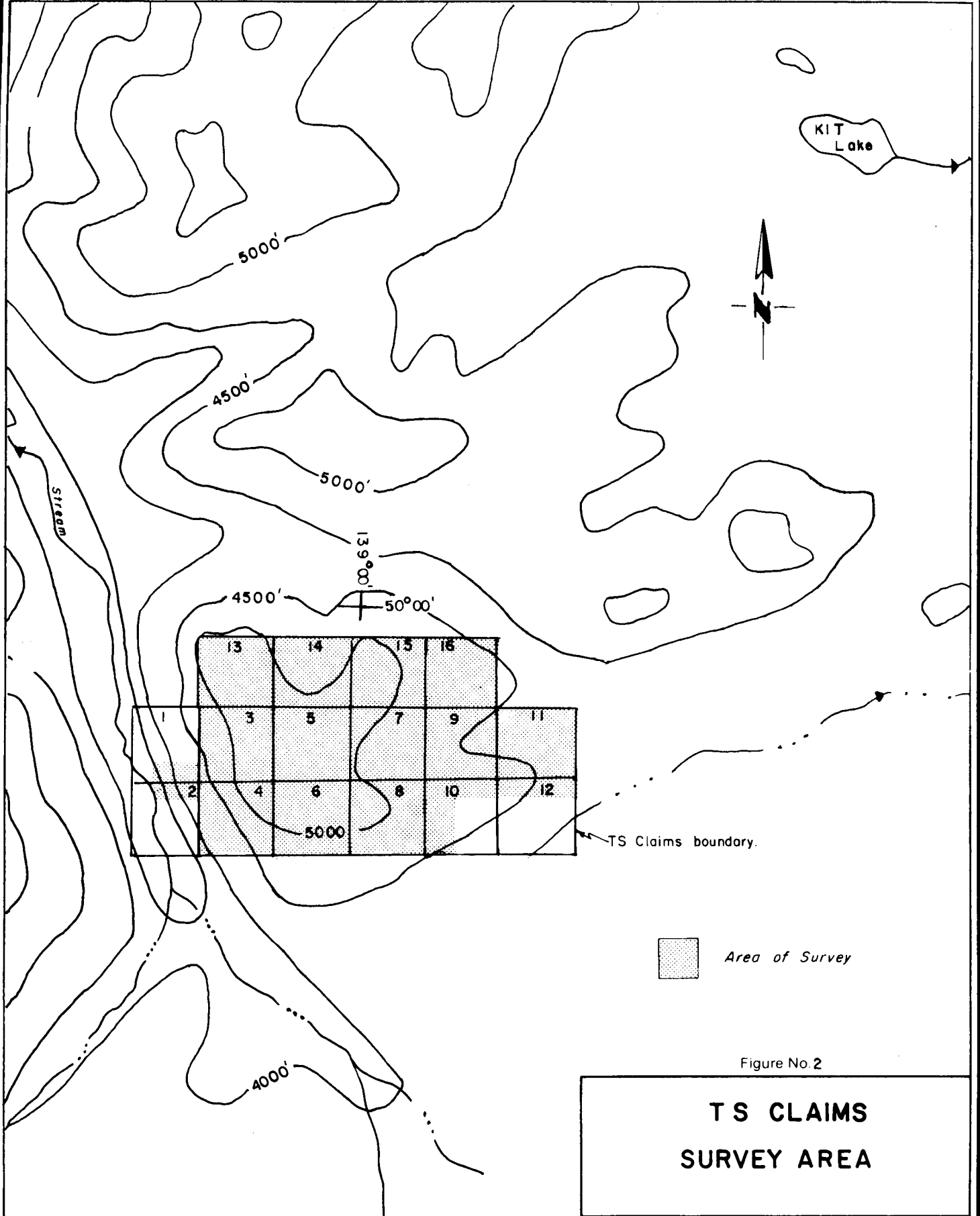


Figure No. 2

**TS CLAIMS
SURVEY AREA**

Scale: 0 1500 3000 FT 1: 31,680

To accompany assessment report on geochemical soil and rock survey and geological mapping of the TS-1 to TS-16 mineral claims, Dawson Mining District, by F. Felder, dated June 1981.

UMEX CORPORATION LTD.

Drawn by: A. Roy
Date: June 1981
Surveyed by:

DWG No

Thrust faulting has resulted in the juxtaposition of the Cambro-Ordovician carbonates over the Siluro-Devonian rocks in the central part of the claim group.

B. Detailed Geology

The area underlain by the TS claims was mapped by Mr. R.S. Tolbert, geologist, on a scale of 1":1,000' in the period of the 12th to the 17th of July (Figure 3).

The claims are underlain almost entirely by blocky thin to medium bedded limestone/dolomites of Cambro-Ordovician age. These units weather a light to dark grey and contain Orthid brachiopods. In the center of the claim group a window of Siluro-Devonian black shales and argillaceous siltstones is exposed. The presence of the window is due to the overthrusting of a slice of Cambro-Ordovician carbonates onto the younger clastic rocks along an east-west thrust fault. The western claim boundary is underlain by tan weathered greenish grey/flaggy dolomite of Helkian age.

Mineralization is observed in narrow breccia zones that have a predominant northeast strike. The mineralization consists of sphalerite and galena in a matrix of carbonate gangue. The sphalerite-galena veinlets and breccias are localized in areas of intersecting fractures, suggesting that this is an area of weak karst development, where following dissolution along fractures, lead zinc emplacement has occurred. In general the veinlets, pods and lenses so formed have widths that rarely exceed several tens of centimeters.

IV GEOCHEMICAL SURVEYS

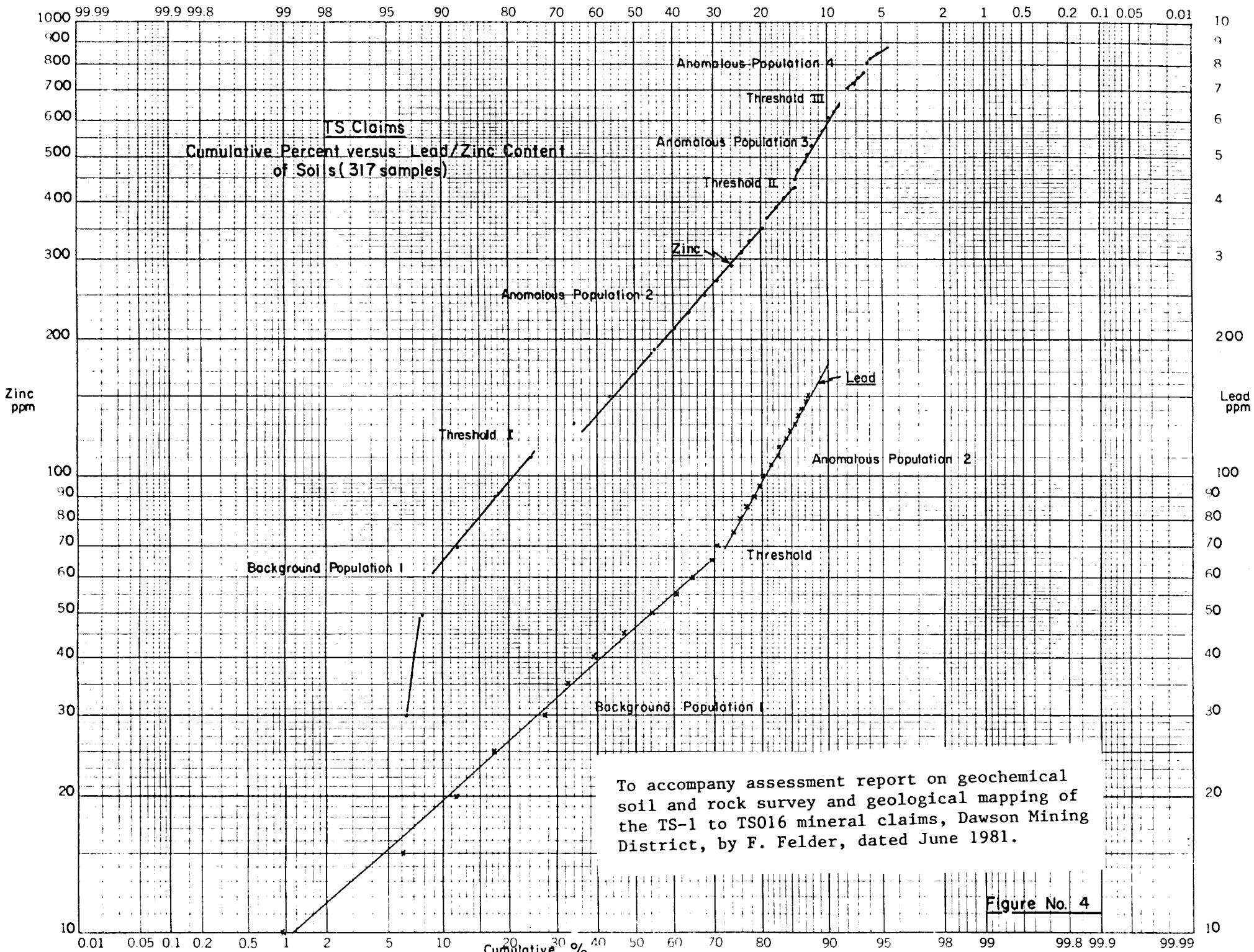
A. Survey and Analytical Information

A total of 11 soil lines were surveyed over the claim area. The 329 soil samples were analyzed for their Cu, Pb, Zn and Ag contents at Acme Laboratories in Vancouver. In addition 26 rock samples collected from the property were assayed.

The analytical procedure employed by Acme for the geochemical analyses consists of drying the samples at 60°C and sieving to -80 mesh. The rock samples are pulverized to -100 mesh. A 0.5 gram sample is digested in hot dilute aqua regia in a boiling water bath and diluted to 10ml with demineralized water. The elements are then determined in the acid solution by Atomic Absorption.

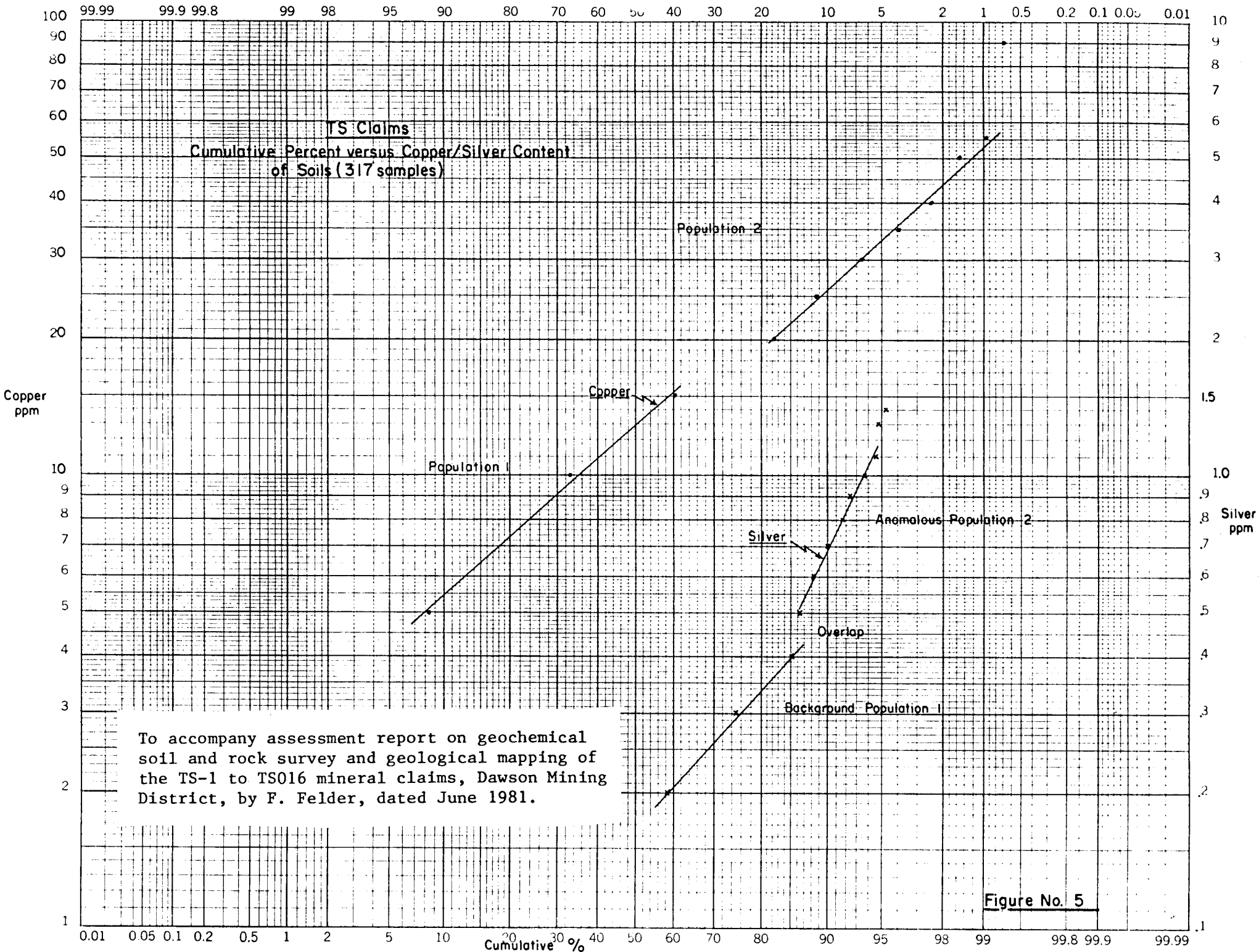
B. Results of the Soil Geochemical Survey.

Statistical analyses of the Cu, Pb, Zn and Ag contents in soils defined the following thresholds (Figures 4 and 5):



To accompany assessment report on geochemical soil and rock survey and geological mapping of the TS-1 to TS016 mineral claims, Dawson Mining District, by F. Felder, dated June 1981.

Figure No. 4



	Thresholds (ppm)
Cu	20
Pb	65
Zn	120, 450, 650
Ag	0.5, 1.2

The soil geochemical results are given in Figures 6 to 9. Anomalous Pb, Zn and Ag are found to coincide in the area of poor drainage adjacent to the stream cutting across the east central part as well as the northeast corner of the claims. The mineralization occurring near the thrust fault location at the western edge of the Siluro-Devonian slice of clastic rock gave an intense Pb-Zn-Ag response in soils with values exceeding 1% in Pb occurring. Similarly the northeast trending breccia zone occurring in the northwest corner of the claim is outlined by intense soil anomalies in Pb, Zn and Ag. The small showings found to occur along the northern boundary of the claims also gave anomalous responses in soils.

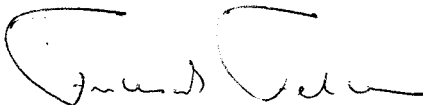
V DISCUSSION OF THE RESULTS OF 1980 PROGRAM

The intense geochemical anomalies indicate that the geochemical dispersion is due primarily to clastic rather than hydromorphic processes. The discrete occurrence of the soil geochemical anomalies in close association with surface mineralization indicates that the mineralization observed in the breccia and veinlets is the source of the anomalies and that no continuous mineralized structures occur near the surface.

The mineralization found on the TS claims can be placed in the Mississippi Valley type class. The limited extent of the Pb-Zn mineralization occurring on the property may suggest that the area was subject only to weak ground preparation and therefore the actual mineralized structures are correspondingly small. Another interpretation that can be ascribed to structures is that they represent the tops of karstic structure and that an improvement of dimension of these structures can be found at depth.

VI CONCLUSIONS

The 1980 program on the TS claims has revealed the presence of Pb-Zn mineralization within Cambro-Ordovician carbonates. Soil geochemical surveys as well as detailed mapping have indicated that the mineralization is restricted to rather narrow structures. The possibility exists that these structures widen at depth and may therefore be of potential interest.



F. Felder

A P P E N D I X I

STATEMENT OF EXPENDITURES
TS CLAIMS

Salaries:

R. Tolbert, July 11-23, 28, 1980	14 days @ \$131.81	\$1,845.34
N. Spaxman, July 11-23, 1980	13 days @ \$44.46	580.32

Accommodation & Expediting:

Resources Expediting Ltd., Dawson City, Y.T.

2 weeks @ \$150.00/week	300.00
26 man days @ \$20.00/day (includes food, tent, fuel etc.)	520.00

Transportation:

Trans-North Turbo Air Ltd., Dawson City, Y.T.

July 11, 1980 - 206B Jetranger - 3.6 hours @ \$435.35/hr (includes fuel)	1,567.26
July 23, 1980 - 206B Jetranger - 3.2 hours @ \$435.35/hr (includes fuel)	1,393.12
July 28, 1980 Tilden Truck Rental, Dawson City, Y.T. 1 day (includes fuel)	60.73

Analysis:

Acme Analytical Ltd., 852 East Hastings Street, Vancouver, B. C.

347 analyses for Cu, Pb, Zn, Ag @ \$3.00/sample	1,041.00
304 soil sample preparations @ \$0.30/sample	91.20
43 rock sample preparations @ \$1.75/sample	75.25
Less 15% discount	181.12

Equipment:

Chemicals, soil/rock sample bags, topo thread etc.	350.00
--	--------

Radio Rental Equivalent:

2 weeks	300.00
---------	--------

Freight:

Shipping samples	161.05
------------------	--------

Office:

R. Tolbert, map preparation,	1 day @ \$145.92	145.92
F. Felder, writing report,	1 day @ \$228.00	228.00
H. Holm, drafting,	3 days @ \$118.56	355.68
Typing, miscellaneous		100.00

	TOTAL	<u>\$8,933.75</u>
--	--------------	--------------------------

A P P E N D I X I I

APPENDIX II

AUTHOR'S QUALIFICATIONS

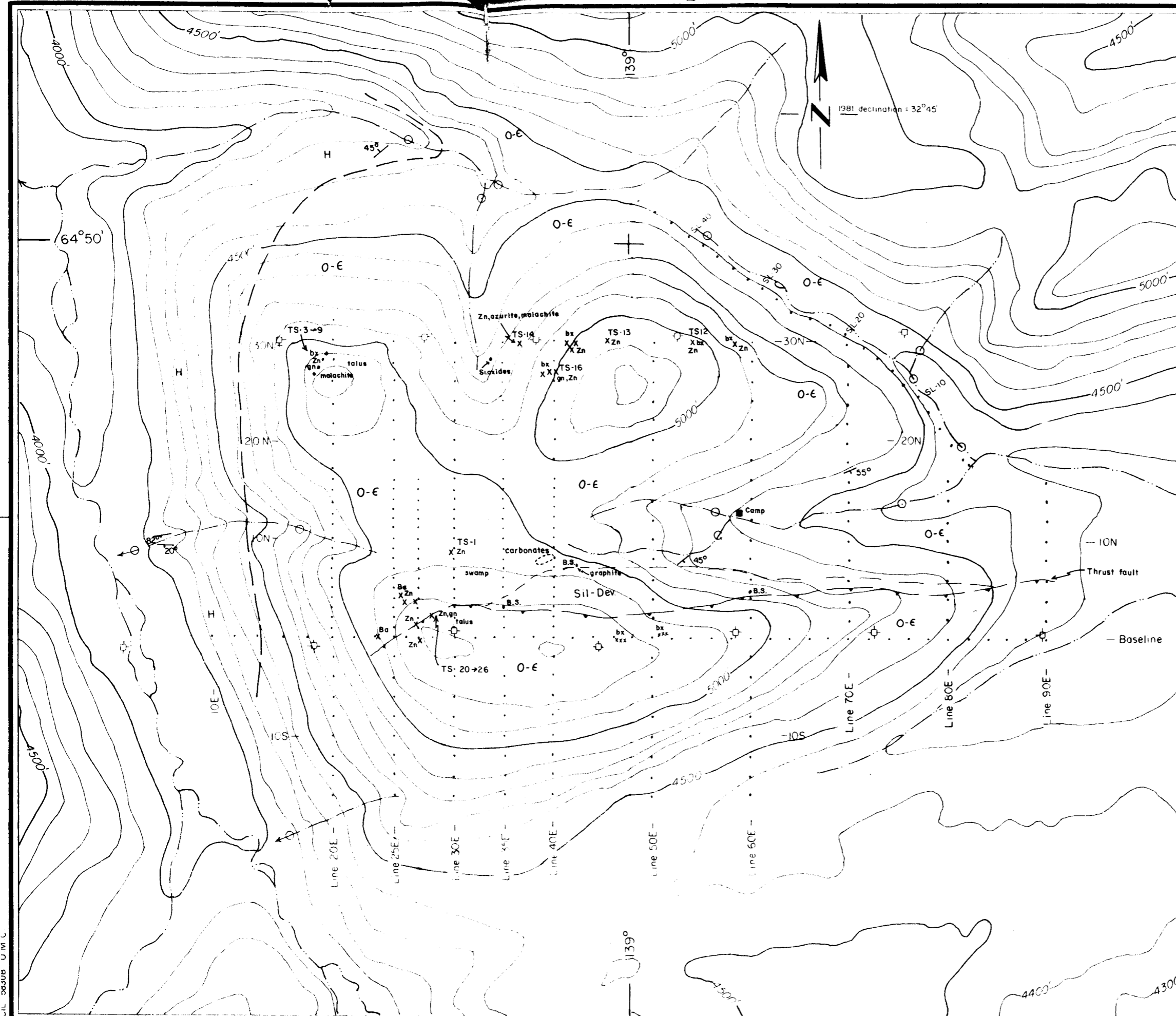
I, Frederick Felder of 7776 Nursery Street, Burnaby, B.C. certify the following:

I am a graduate of McGill University of B.Sc Geology 1967 and M.Sc Geology-Geochemistry the University of New Brunswick 1972.

I am a member of the Society of Exploration Geochemists, Canadian Institute of Mining and Metallurgy and A.I.M.E.

Since 1967 I have been employed in my field by Cominco + Exminesa in Eastern Canada, Spain and Mexico, Soquem in Quebec, and Union Miniere S.A. in Mexico and Central and South America.

Since 1979 I have been the Regional Manager for Union Miniere Explorations and Mining Corporation Limited for the Western District.



LEGEND

- Streams
- Stream sediment sample location
- Soil sample location
- Claim post
- mineralization
- breccia
- black shales
- galena
- Barite
- Zinc

Silurian-Devonian Carbonaceous black shales and calcareous siltstones. Monograptus.

Cambro-Ordovician Blocky thin-medium bedded light gray weathering grey to dark grey limestones/dolomites, silicified and brecciated in zones. Orthid brachiopod.

Helikian Tan weathering greenish grey flaggy dolomite.

Rock Sample Number	Copper	Lead	Zinc	Silver
TS 1	85 ppm	320 ppm	1.6 %	.8 ppm
TS 3	400 ppm			13.8 ppm
TS 4	790 ppm	2500 ppm		2.2 ppm
TS 5	490 ppm	200 ppm		.9 ppm
TS 7	1400 ppm			10.5 ppm
TS 9	74 ppm		1.0 %	17.0 ppm
TS 12	305 ppm	2000 ppm		7.1 ppm
TS 12	22 ppm	720 ppm	3700 ppm	.7 ppm
TS 13	4100 ppm	460 ppm		3.3 ppm
TS 14	3600 ppm	1.6 %		4.9 ppm
TS 16	80 ppm	1100 ppm	1.0 %	.9 ppm
TS 20	146 ppm	1000 ppm		17.4 ppm
TS 21	12 ppm	41 ppm	2100 ppm	.6 ppm
TS 22	23 ppm	112 ppm	3200 ppm	.7 ppm
TS 23	16 ppm	51 ppm	8800 ppm	.5 ppm
TS 24	7 ppm	250 ppm		.4 ppm
TS 25	12 ppm	100 ppm	6900 ppm	.4 ppm
TS 26	7 ppm	380 ppm	4000 ppm	.6 ppm

To accompany assessment report on geochemical soil and rock survey and geological mapping of the TS-1 to TS-16 mineral claims, Dawson Mining District, by F. Felder, dated June 1981.

Figure No 3

**BLACKSTONE PROJECT - 1980
TS CLAIMS
GEOLOGY
090855**

N.T.S. 116B 14-15

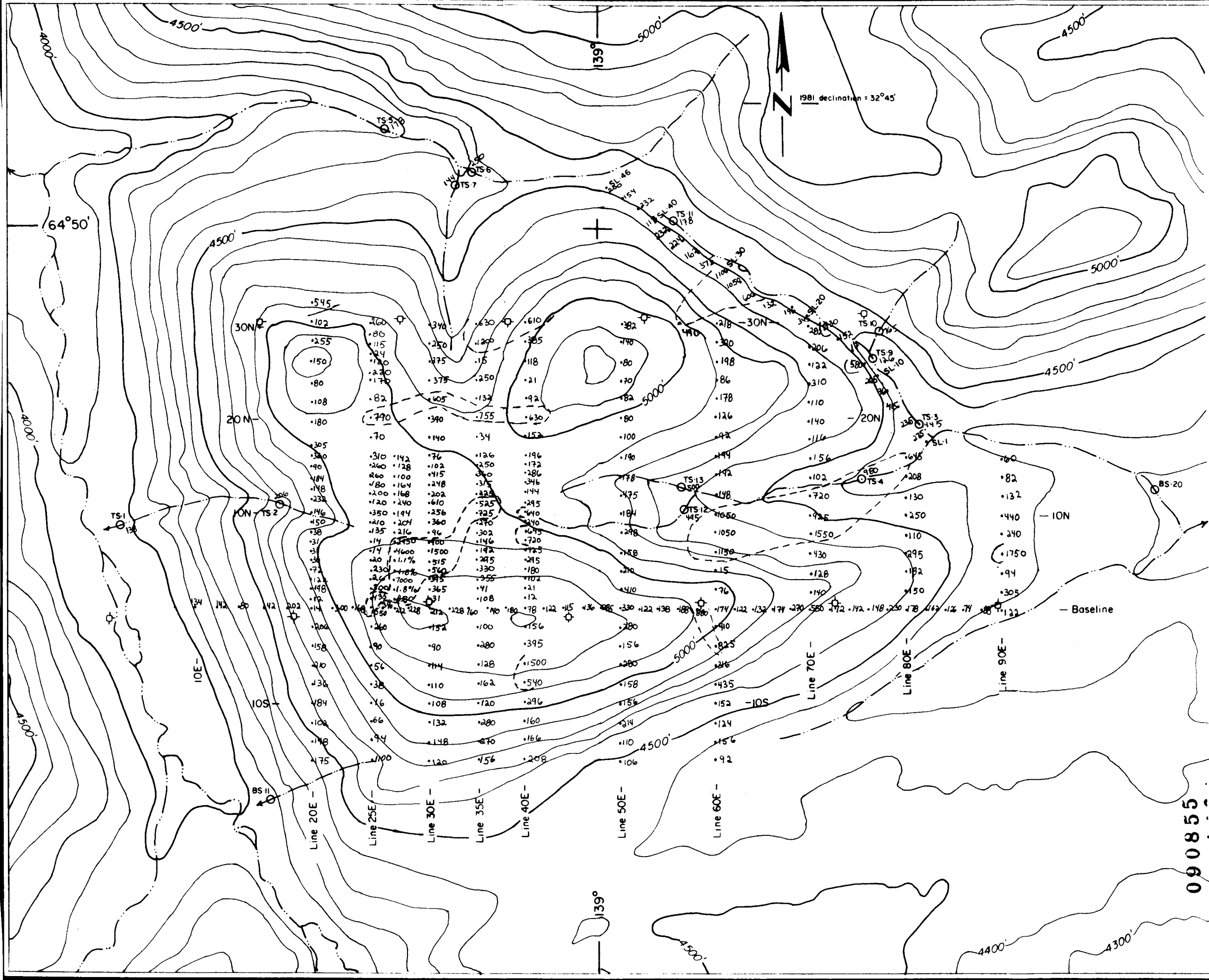
Scale: 1:12,000

UMEX CORPORATION LTD.

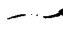
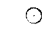


Drawn by H. Holm
Date March, 1981
Surveyed by R.S. Tolbert

DWG. No.

D.L. 06305 U.M.C.



LEGEND


-  Streams
-  Stream sediment sample location
-  Soil sample location
-  Claim post

To accompany assessment report on geochemical soil and rock survey and geological mapping of the TS-1 to TS-16 mineral claims, Dawson Mining District, by F. Felder, dated June 1981.

Figure No. 7

BLACKSTONE PROJECT - 1980
TS CLAIMS
Soil Geochemistry
Zinc

NTS 1168 14-15

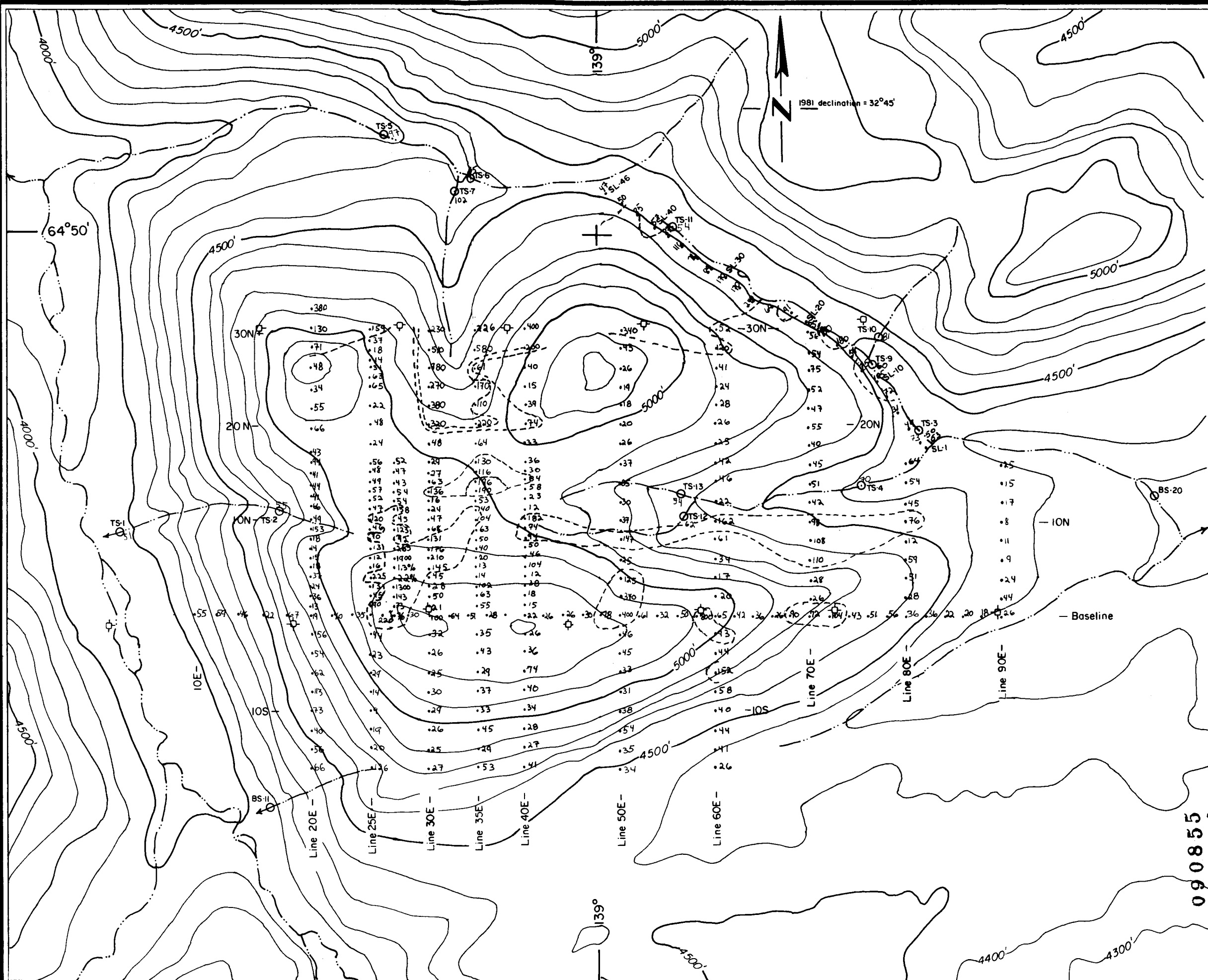
Scale  1:12,000

UMEX CORPORATION LTD.





Drawn by: H. Holm
 Date: March, 1981
 Surveyed by: R.S. Tolbert

DWG. No.

090855



LEGEND


-  Streams
-  Stream sediment sample location
-  Soil sample location
-  Claim post

To accompany assessment report on geochemical soil and rock survey and geological mapping of the TS-1 to TS-16 mineral claims, Dawson Mining District, by F. Felder, dated June 1981.

Figure No. 6

BLACKSTONE PROJECT - 1980
TS CLAIMS
Soil Geochemistry
Lead

N.T.S.116B 14-15

Scale:  1:12,000

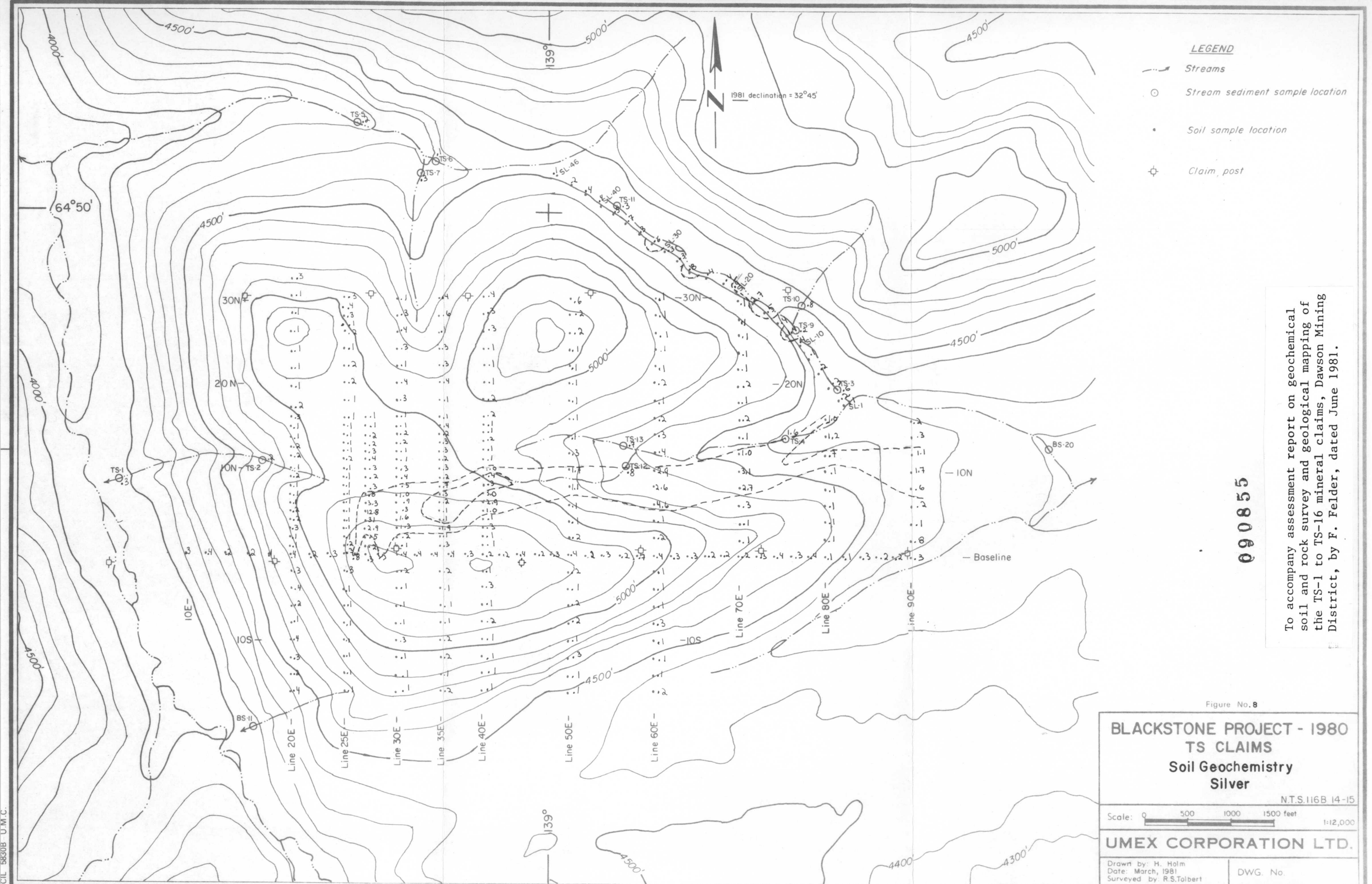
UMEX CORPORATION LTD.

Drawn by: H. Holm
 Date: March, 1981
 Surveyed by: R.S.Tolbert

DWG. No.

090855

BCL 5830B U.M.C.



LEGEND

-  Streams
-  Stream sediment sample location
-  Soil sample location
-  Claim post

To accompany assessment report on geochemical soil and rock survey and geological mapping of the TS-1 to TS-16 mineral claims, Dawson Mining District, by F. Felder, dated June 1981.

090855

Figure No. 8

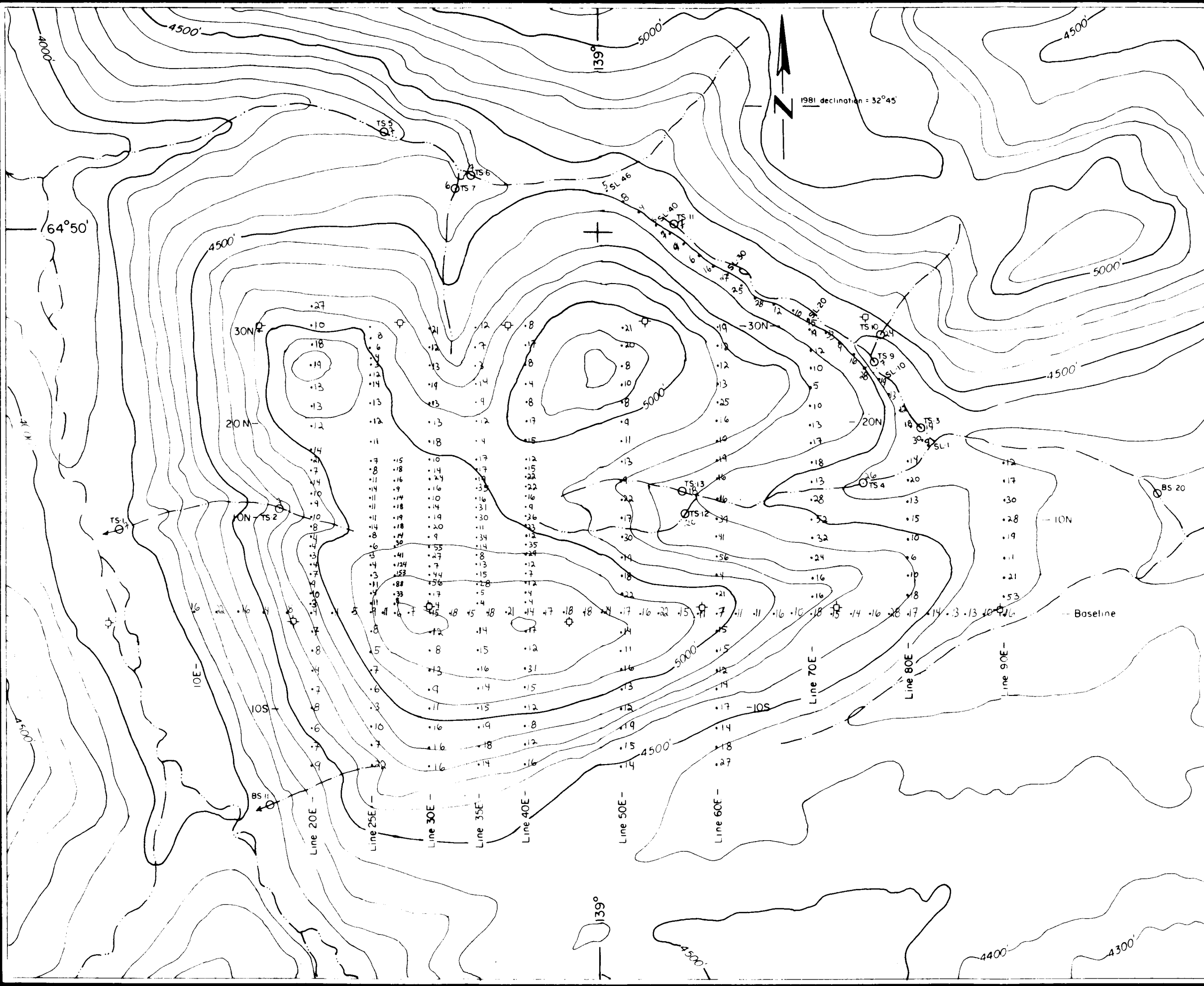
**BLACKSTONE PROJECT - 1980
TS CLAIMS
Soil Geochemistry
Silver**

Scale: 0 500 1000 1500 feet 1:12,000
N.T.S. 116B 14-15

UMEX CORPORATION LTD.

Drawn by: H. Holm
Date: March, 1981
Surveyed by: R.S. Tolbert
DWG. No.

BCIL 5830B - U.M.C.



- LEGEND**
- Streams
 - Stream sediment sample location
 - Soil sample location
 - Claim post

090855

To accompany assessment report on geochemical soil and rock survey and geological mapping of the TS-1 to TS-16 mineral claims, Dawson Mining District, by F. Felder, dated June 1981.

Figure No. 9

**BLACKSTONE PROJECT - 1980
TS CLAIMS
Soil Geochemistry
Copper**

NTS 116B 14-15

Scale 1:12,000

UMEX CORPORATION LTD.

Drawn by H. Holm
Date March, 1981
Surveyed by R.S. Tolbert

DWG No