

CAMPBELL RESOURCES INCORPORATED

ASSESSMENT REPORT

GEOLOGICAL AND GEOCHEMICAL SURVEYS

JUBJUB CLAIMS 1 TO 32

115-P-14, 15

63°50'N

137°02'W

DAWSON AREA
YUKON TERRITORY

A. WOODSEND
APRIL 16, 1981

090802

This report was prepared by the
Geological Survey and is recommended
for publication as a bulletin
of

12,800.00
W. M. Lewis

Considered as a bulletin
Section 5 (a) of Quartz

Commission

Section

128000

Note: Re Claim Ownership



At the time the majority of work described in this report was carried out, the Jubjub claims were owned by CCH Resources Ltd., a subsidiary of Campbell Chibougamau Mines Ltd., on behalf of the Cortin Joint Venture.

Since then, Campbell Chibougamau Mines Ltd. has changed its name to Campbell Resources Inc., and a major corporate re-organization initiated. Legal requirements have resulted in a number of changes in claim ownership.

Presently the claims are being transferred from Campbell Resources Inc. to CCH Minerals Ltd. CCH Minerals Ltd. is a federally chartered company registered to do business in the Yukon, and in time will become the Campbell Group's dominant operating exploration subsidiary in western Canada.

A handwritten signature in dark ink, appearing to read "Gordon Ford".

Gordon Ford
Exploration Manager-West
CAMPBELL RESOURCES INC.
CCH MINERALS LTD.

090802



This report has been examined by the Geological Evaluation Unit and is recommended to the Commissioner to be considered as representation work in the amount of

\$ 12,800.00

R. Debedu A. Roy G. G. G.
Resident Geologist or June 19/81
Resident Mining Engineer

Considered as representation work under Section 53 (4) Yukon Quartz Mining Act.

[Signature]
E. R. BAXTER
Supervising Mining Recorder

[Signature]
Commissioner of Yukon Territory

CONTENTS

	Page
Introduction.....	1
Exploration History.....	1
Geology.....	2
Geochemistry.....	3
Methods.....	3
Results.....	3
Recommendations.....	3
Statement of Qualifications.....	4
Statement of Expenditures.....	5

ILLUSTRATIONS

JUBJUB, Claim Sketch	½mile = 1"	1981	Attached
Map 708-1 JUBJUB, Detailed Geology and Geochemistry	1:5000	1981	In Pocket

Introduction

The JUBJUB claim group covers a small area along the headwaters of Big Creek. The claims are owned in their entirety by Campbell Resources Incorporated of Toronto, Ontario.

The work outlined in this report was conducted from June 10 through July 2, 1980. Geological and geochemical surveys at 1:5000 scale were completed over a small area in the western half of the claim group.

An amount totalling \$13,027.00 has been claimed for assessment purposes.

Exploration History

The Rhosgobel (Canada Tungsten Mining Corporation Limited and Standard Mines Limited), Nop (United Keno Hill Mines Limited) and WR (Silver Standard Mines Limited) claim groups were staked in an area west of the existing JUBJUB group during 1971. Geological and geochemical surveys were completed on the first two of these claim groups. The target metal here was tungsten, and small amounts of scheelite were reported in quartz veins cutting a porphyritic granite stock on the Rhosgobel Group. This area was subsequently restaked as the Rain and Bee claims in 1978 by A. Thom and D. Hutton.

The 32 claim JUBJUB Group was staked for the Cortin Joint Venture in 1979 to cover the probable source area of high silver stream sediment values. Claim lines were soil sampled in 1979 and a detailed grid was sampled and mapped during 1980.

A large area north and east of the JUBJUB Group was staked by the Canada Tungsten Mining Corporation Limited during 1980, presumably to cover the source area of scheelite which is found in placer gravels in this area.

Geology

The geology within the detailed grid area is shown on Map 708-1. Granodiorite(?) occupies the eastern third of the grid area, probably forming part of an elongate intrusive body mapped in this area by the Geological Survey of Canada (Bostock, 1964). It intrudes allochthonous quartzites and quartz-sericite schists of the Proterozoic Yukon Group. Within the sediments are three gossaned scree slides, two of which carry weakly anomalous silver values in soil.

It has been suggested that the scree slides represent areas of weak silver bearing galena veinlet mineralization adjacent to the intrusive body. Arsenopyrite bearing quartz veins carrying appreciable values in silver are quite common in the West Ridge area, and would seem to offer a more plausible explanation for the anomalies within the grid area. Arsenopyrite has, in fact, been identified in quartz veins collected from this area.

Geochemistry

Methods

Soil samples were collected from the B horizon wherever possible. Minus 80 mesh fractions were analyzed for zinc and silver by Bondar-Clegg and Company Limited in Whitehorse. Both elements were analyzed by atomic absorption spectrometry following standard digestion by nitric and hydrochloric acids.

Results

Zinc and silver were analyzed in soils on a fifty by fifty metre grid and the contoured results for these elements are shown on Map 708-1. Anomalous silver values are present within two of the three gossaned scree slide areas. The general tenor of the values is low and the anomaly pattern is quite patchy. Zinc values are uniformly low.

Recommendations

The 1980 program was performed by student geologists, and some checking on the ground should be done in 1981. Assessment costs have been filed to March 30, 1985, and at the present time no further work is recommended.

STATEMENT OF QUALIFICATIONS

Work on the JUBJUB Group during 1980 was carried out under the direction of A. Woodsend of Vancouver, British Columbia.

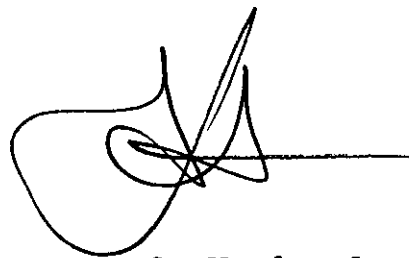
Mr. Woodsend is a senior geologist with Campbell Resources Incorporated. He holds a B.Sc.(Hons) degree in geology from Southampton University, England and has practiced his profession continuously for a period of ten years, in a variety of countries and geological environments.

The geological and geochemical work during this period was conducted by T. Boyd of Vancouver, British Columbia, J. Branch of Windsor, Ontario and M. Kerlan of Kingston, Ontario.

STATEMENT OF EXPENDITURES

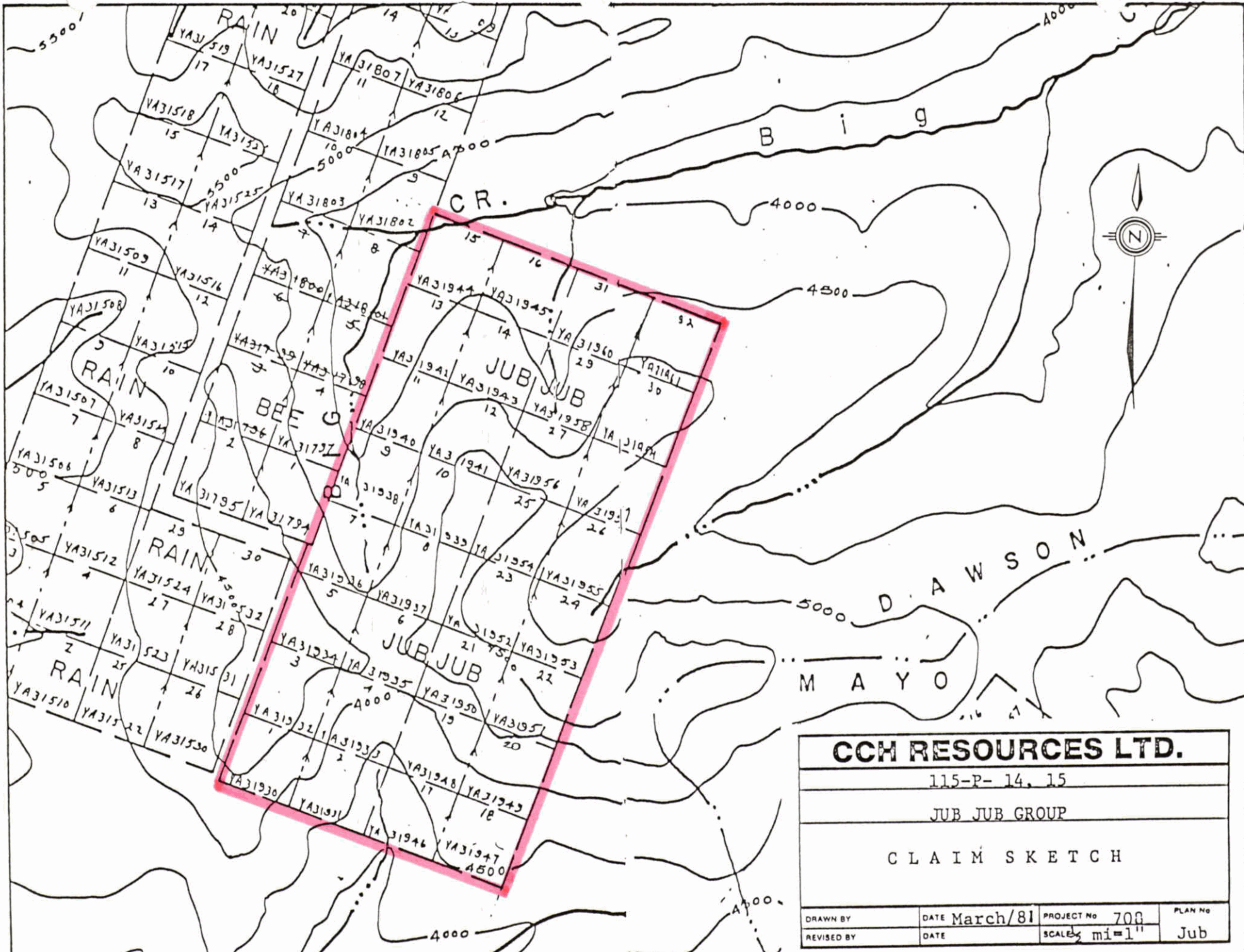
461 Soils analyzed for Zn and Ag @ \$2.90	\$1,337.00
6 Geologist days @ \$75.00/day	450.00
44 Assistant days @ \$50.00/day	2,200.00
16 Helicopter hours @ \$440.00/hour (casual rate)	7,040.00
Drafting and Interpretation	1,000.00
Food and supplies: 50 man days @\$20.00/day	1,000.00
	<u>\$13,027.00</u>
	=====

Work was carried out during the period June 10 to July 2, 1980.



A. Woodsend
Campbell Resources Incorporated

Vancouver, B.C.
April 16th, 1981.



CCH RESOURCES LTD.			
115-P- 14, 15			
JUB JUB GROUP			
CLAIM SKETCH			
DRAWN BY	DATE March/81	PROJECT No 700	PLAN No
REVISED BY	DATE	SCALE 1 mi = 1"	Jub

