



ASSESSMENT REPORT

DRILLING AND SAMPLING DATA FOR WORK
PERFORMED ON THE KAREN MINERAL CLAIMS

WORK PERFORMED: July 3-20, 1980
by Milchem Incorporated
2275 East Arapahoe Road, #320
Littleton, Colorado 80122
U. S. A.
as Agent for Owner

OWNER: Jade Drilling, Ltd.

BY: Bruce V. Templeton
Chief Geologist
Milchem Corporation
March 5, 1981

090789

This report has been examined by the Geological Evaluation Unit and is recommended to the Commission to be considered as representing the amount of \$ 4,000.00

[Signature]

Engineer

Considered in connection with the application work under Section 53 of the Quartz Mining Act.

[Signature]
B. R. BAXTER
Supervising Mining Recorder

[Signature]
Commissioner of Yukon Territory

FROM: Mining Recorder at DAWSON

TO: Supervising Mining Recorder at Whitehorse, Y.T.



FOR ACTION ARE:

NEW APPL'N for PLACER LEASE to PROSPECT: Name:

RENEWAL APPL'N PLACER LEASE to PROSPECT: Name:

Lease No.

AFFIDAVIT of EXPENDITURE on PLACER LEASE. Name:

Lease No.

ASSIGNMENT of PLACER LEASE No.

From: _____ To: _____

GROUPING APPL'N UNDER SEC. 52(2) PLACER MINING ACT.

Owner: _____

DIAMOND DRILL LOGS:

Claims: _____ Claim sheet no: _____

QUARTZ ASSESSMENT REPORT:

Claims: KAREN 1-8

Claim sheet no. 116-6-1

Type of report: Drilling & Sampling

Submitted by: Milchem Corporation

Cls. work performed on: all

\$ Req. for ren. application 4,000.00

Signature [Signature] 30-3-81

REPLY ACTION:

Date Ret. _____

Signature _____



Department of Indian Affairs and Northern Development
YUKON QUARTZ MINING ACT

FORM "C" - APPLICATION FOR A CERTIFICATE OF WORK

(This form required in duplicate with sketch showing location of work.)



I (Name)	Bruce V. Templeton	Occupation	Geologist
(Postal Address)	2275 East Arapahoe Road, Suite 320 Littleton, Colorado 80122 U.S.A.		

OFFICE DATE STAMP

MAKE OATH AND SAY THAT :-

- I am the owner, or agent of the owner, of the mineral claim(s) to which reference is made herein.
- I have done, or caused to be done, work on the following mineral claim(s):
(Here list claims on which work was actually done by number and name)

KAREN #3 (YA 32584)

SHOW DATES WORK COMMENCED AND ENDED ON CLAIMS HAVING DIFFERENT ANNIVERSARY DATES

situated at 65°11'N, 138°10'W Claim Sheet No. 1166-1
in the Dawson Mining District, to the value of at least \$20,150
dollars, since the 8th day of July 19 80

to represent the following mineral claims under the authority of Grouping Certificate No. _____
(Here list claims to be renewed by number and name in numerical order)

- KAREN #1 (YA 32582) - 5 years
- KAREN #2 (YA 32583) - 5 years
- KAREN #3 (YA 32584) - 5 years
- KAREN #4 (YA 32585) - 5 years
- KAREN #5 (YA 32586) - 5 years
- KAREN #6 (YA 32587) - 5 years
- KAREN #7 (YA 32588) - 5 years
- KAREN #8 (YA 32589) - 5 years

Total work claimed-40 claim years

- The following is a detailed statement of such work: (Set out full particulars of the work done in the twelve months in which such work is required to be done, as shown by Section 53.)

Work performed on Karen #3 consists of the land construction of 76 meters (249 feet) of surface trench for the purpose of obtaining outcrop samples, and the drilling of 13 BQ core holes (1-7/16" core) totalling 451.8 meters (1,482.3 feet). Drilling was performed using a Wink Internation Hydrawink. (See Supplemental Sheet A for additional information)

Sworn before me at Arapahoe County, Colorado
this 9th day of march 1981

Linda V. Hidy
A Commissioner for Oaths for Yukon Territory,
Notary Public, State of Colorado
U.S.A.

My Commission Expires March 15, 1983

Bruce V. Templeton
Applicant.

SUPPLEMENTAL SHEET A

(To accompany Form C - Application for a Certificate of Work)

Continuation of statement of work performed:

Hand trenching of Karen #3 commenced on July 3 and continued through July 12, 1980. Drilling commenced on July 8 and continued through July 20, 1980.

Costs claimed for work performed on Karen #3 are calculated as per "Yukon Quartz Mining Act, Schedule of Respresentation Work" as follows:

Total material hand excavated in construction of sampling trenches

Length of trenches	249 feet
Average width of trenches	2 feet
Average depth of trenches	1.5 feet
Total volume of material excavated	747 cubic feet
	= 27 cubic yards

27 cubic yards hand excavated through loose material to a depth less than 6 feet at \$6.00/cubic yard	\$166
---	-------

Drill Hole	Length of Casing	Value/ft Casing	Value Casing	Length Core	Value/ft Core	Value Core	Total Value Core
DDH - 1	6'	\$3.00	\$ 18.00	71.3'	\$13.00	\$ 926.90	\$ 944.90
DDH - 2	11'	5.00	55.00	107.2'	15.00	1068.00	1663.00
DDH - 3	6'	3.00	18.00	82.0'	13.00	1066.00	1084.00
DDH - 4	6'	3.00	18.00	69.0'	13.00	897.00	915.00
DDH - 5	10'	3.00	30.00	103.0'	15.00	1545.00	1575.00
DDH - 6	8'	3.00	24.00	114.8'	15.00	1722.00	1746.00
DDH - 7	16'	5.00	80.00	67.0'	13.00	871.00	951.00
DDH - 8	9'	3.00	27.00	139.0'	15.00	2085.00	2112.00
DDH - 9	13'	5.00	65.00	65.0'	13.00	845.00	910.00
DDH - 10	11'	5.00	55.00	137.0'	15.00	2055.00	2110.00
DDH - 11	13'	5.00	65.00	170.0'	15.00	2550.00	2615.00
DDH - 12	8'	3.00	24.00	140.0'	15.00	2100.00	2124.00
DDH - 13	8'	3.00	24.00	92.0'	15.00	1380.00	1404.00
TOTALS	125'		\$503.00	31357.3'		\$19650.90	\$20153.90

Total expenditures claimed for drilling \$20153.90

Total expenditures claimed for work on Karen #3 and for the benefit of Group I \$20319.90

DDH - 1	6'	\$3.00	\$ 18.00	71.3'	\$13.00	\$ 926.90	\$ 944.90
DDH - 2	11'	5.00	55.00	107.2'	15.00	1068.00	1663.00
DDH - 3	6'	3.00	18.00	82.0'	13.00	1066.00	1084.00
DDH - 4	6'	3.00	18.00	69.0'	13.00	897.00	915.00
DDH - 5	10'	3.00	30.00	103.0'	15.00	1545.00	1575.00
DDH - 6	8'	3.00	24.00	114.8'	15.00	1722.00	1746.00
DDH - 7	16'	5.00	80.00	67.0'	13.00	871.00	951.00
DDH - 8	9'	3.00	27.00	139.0'	15.00	2085.00	2112.00
DDH - 9	13'	5.00	65.00	65.0'	13.00	845.00	910.00
DDH - 10	11'	5.00	55.00	137.0'	15.00	2055.00	2110.00
DDH - 11	13'	5.00	65.00	170.0'	15.00	2550.00	2615.00
DDH - 12	8'	3.00	24.00	140.0'	15.00	2100.00	2124.00
DDH - 13	8'	3.00	24.00	92.0'	15.00	1380.00	1404.00



Mineral Division

KAREN EXPLORATION PROGRAM
DRILL HOLE RECORD

Page 1 of 4

Drill Hole No. DDH-1Date: July 8, 9, 1980Property: Karen ClaimsDrilled By: Globe DrillingCo-ordinates: North 31,667.98 East 33,224.11Logged By: M. C. JohnsonElevation: 1121.84Total Depth: 23.57 mOrientation: S41W, - 45° (GS 38° 30'W-45°)

DEPTH		SAMPLE RECOVERY	SAMPLE NUMBER	ANALYSES			DESCRIPTION OF MATERIAL DRILLED
FROM	TO			Sp. Gr.	BaSO4	Cond.	
0	1.83					Surface rubble - dolomite with calcite veins	
1.83	2.44	77%					
1.83	2.30					Dolomite with recrystallized calcite veins	
2.44	3.96	70%					
2.44	2.98					Grey dolomite with calcite veins	
2.98	3.50					Blue-white coarsely crystallized barite	
3.96	5.49	73%					
3.96	5.08					Blue-white coarsely crystallized barite	
5.49	6.61	92%					
5.49	5.72					Blue white coarsely crystallized barite	
5.72	6.05					Grey dolomite with calcite veins	
6.05	6.09					Blue-white coarsely crystallized barite	
6.09	6.52					Grey dolomite with recrystallized calcite	
6.61	7.10	100%				Grey dolomite with calcite veins	



Mineral Division

KAREN EXPLORATION PROGRAM
DRILL HOLE RECORD

Drill Hole No. DDH-1

Date: July 8, 9, 1980

Property: Karen Claims

Drilled By: Globe Drilling

Co-ordinates: North _____ East _____

Logged By: M. C. Johnson

Elevation: _____

Total Depth: 23.57 m

DEPTH		SAMPLE RECOVERY	SAMPLE NUMBER	ANALYSES			DESCRIPTION OF MATERIAL DRILLED
FROM	TO			Sp. Gr.	BaSO4	Cond.	
7.10	8.66	100%					
7.10	7.63					Grey dolomite with calcite veins	
7.63	7.85					Blue-white coarsely crystalline barite	
7.85	8.66					Grey dolomite with calcite veins	
8.66	10.13	100%					
8.66	8.69					Grey dolomite with calcite veins	
8.69	8.84					Blue-white crystalline barite	
8.84	10.13					Grey dolomite with calcite veins -- barite vein	
						@ 8.93-9.00m	
10.13	11.83	100%					
10.13	10.79					Grey dolomite with calcite veins	
10.79	11.33					Blue-white coarsely crystalline barite	
11.33	11.83					Grey dolomite with calcite veins	
11.83	13.41	100%					
11.83	12.69					Grey dolomite with calcite veins	
12.69	12.99					Grey dolomite with calcite & 25cm barite veins	
12.99	13.41					Grey dolomite with calcite veins	



Mineral Division

KAREN EXPLORATION PROGRAM
DRILL HOLE RECORD

Drill Hole No. DDH-1

Date: 7/8/80, 7/9/80

Property: KAREN CLAIMS

Drilled By: Globe Drilling

Co-ordinates: North _____ East _____

Logged By: M.C. Johnson

Elevation: _____

Total Depth: 23.57m

DEPTH		SAMPLE RECOVERY	SAMPLE NUMBER	ANALYSES			DESCRIPTION OF MATERIAL DRILLED
FROM	TO			Sp. Gr.	BaSO4	Cond.	
13.41	15.12	100%				Grey dolomite w/calcite veins	
						Barite veins @ 13.90-14.21, 14.35-14.45, 14.79-14.91m.	
						1 cm calcite veins @ barite - dolomite contact	
15.12	16.73	100%				Grey dolomite w/calcite veins	
						Barite "veinlets" (~1cm) @ 15.44-15.94, 16.11-16.17	
16.73	17.46	100%				Grey dolomite w/ calcite veins - Barite vein	
						@ 16.86-16.87, 17.06-17.24-calcite 1cm thick	
						@ barite - dolomite contact	
17.46	18.35	100%				Gray dolomite w/calcite veins	
17.46	18.24						
18.24	18.35					Blue-white coarsley crystalline barite --	
						1cm calcite @ barite - dolomite contact	
18.35	19.90	100%				Grey dolomite w/calcite veins -- calcite dominant	
						in 1st 0.5m of this interval -- small barite	
						veinlets (<0.2cm) also in this interval.	
19.90	21.46	100%				Grey dolomite w/ calcite veins -- <2cm	
						barite crystals @ 20.34-20.37m	



Mineral Division

KAREN EXPLORATION PROGRAM
DRILL HOLE RECORD

Drill Hole No. DDH-2

Date: 7/9/80, 7/10/80

Property: Karen Claims

Drilled By: Globe Drilling

Co-ordinates: North 31,682.59 East 33,219.15

Logged By: M.C. Johnson

Elevation: 1120.37

Total Depth: 36.04m

Orientation: S44W, -45S (GS41⁰30'W, -45S)

DEPTH		SAMPLE RECOVERY	SAMPLE NUMBER	ANALYSES			DESCRIPTION OF MATERIAL DRILLED
FROM	TO			Sp. Gr.	BaSO4	Cond.	
0	1.52					Surface rubble-dolomite w/calcite veins	
1.52	2.44	50%				Grey dolomite w/calcite veins	
1.52	1.98						
2.44	5.49	40%					
2.44	2.48					Grey dolomite w/ calcite veins	
2.48	3.12					Blue-white coarsely crystalline barite w/ minor calcite	
5.49	7.01	83%					
5.49	6.57					Blue-white coarsely crystalline barite w/minor calcite	
7.01	8.66	100%				Blue-white coarsely crystalline barite and milky white calcite intermixed	
8.66	10.18	100%				Blue-white coarsely crystalline barite w/minor milky white calcite intermixed	
10.18	11.70	100%				Blue-white coarsely crystalline barite w/milky white calcite intermixed	
11.70	13.22	100%				Blue-white coarsely crystalline barite	



Mineral Division

KAREN EXPLORATION PROGRAM
DRILL HOLE RECORD

Drill Hole No. DDH-2

Date: 7/9/80, 7/10/80

Property: KAREN CLAIMS

Drilled By: Globe Drilling

Co-ordinates: North _____ East _____

Logged By: M.C. Johnson

Elevation: _____

Total Depth: 36.04m

DEPTH		SAMPLE RECOVERY	SAMPLE NUMBER	ANALYSES			DESCRIPTION OF MATERIAL DRILLED
FROM	TO			Sp. Gr.	BaSO4	Cond.	
13.22	14.74	100%					
13.22	14.64					Blue-white coarsely crystalline barite w/milky ^{white} calcite	
14.64	14.74					Grey dolomite w/calcite	
14.74	16.26	100%					
14.74	15.08					White calcite vein	
15.08	15.50					Grey dolomite w/ calcite vein	
15.50	16.26					Blue-white coarsely crystalline barite w/milky white calcite	
16.26	17.78	100%					
16.26	17.33					Blue-white coarsely crystalline barite w/milky white calcite -- calcite vein @ 16.86-16.92m	
17.33	17.78	100%				Grey dolomite w/ calcite veins	
17.78	19.00	100%				Grey dolomite w/ calcite veins	
17.78	18.12					Blue-white coarsely crystalline barite w/ milky	
18.12	19.00					white calcite	



Mineral Division

KAREN EXPLORATION PROGRAM
DRILL HOLE RECORD

Drill Hole No. DDH-2

Date: 7/9/80, 7/10/80

Property: KAREN CLAIMS

Drilled By: Globe Drilling

Co-ordinates: North _____ East _____

Logged By: M. C. Johnson

Elevation: _____

Total Depth: 36.04m

DEPTH		SAMPLE RECOVERY	SAMPLE NUMBER	ANALYSES			DESCRIPTION OF MATERIAL DRILLED
FROM	TO			Sp. Gr.	BaSO4	Cond.	
19.00	20.68	100%				Grey dolomite "laced" w/barite - calcite veins generally less than 2.5 cm wide	
20.68	22.36	100%				Grey dolomite w/ calcite veins	
22.36	23.88	100%				Grey dolomite "laced" w/barite-calcite veins generally less than 2.5 cm wide	
23.88	25.40	100%				Grey dolomite w/calcite veins	
25.40	26.92	100%				Grey dolomite w/ calcite veins	
26.92	28.44	100%					
26.92	28.24					Grey dolomite w/calcite veins	
28.24	28.39					Blue-white coarsely crystalline barite	
28.39	28.44					Grey dolomite w/calcite veins	
28.44	29.81	100%				Grey dolomite w/calcite veins	
29.81	31.39	100%				Grey dolomite w/calcite veins	
31.39	32.97	100%				Grey dolomite w/calcite veins -- occ. "pocket" of blue-white coarsely crystalline barite	



Mineral Division

KAREN EXPLORATION PROGRAM
DRILL HOLE RECORD

Drill Hole No. DDH-3

Date: 7/10/80

Property: KAREN CLAIMS

Drilled By: Globe Drilling

Co-ordinates: North 31,683.21 East 33,217.62

Logged By: M.C. Johnson

Elevation: 1120.45m

Total Depth: 26.82m

Orientation: Vertical

DEPTH		SAMPLE RECOVERY	SAMPLE NUMBER	ANALYSES			DESCRIPTION OF MATERIAL DRILLED
FROM	TO			Sp. Gr.	BaSO4	Cond.	
0	0.91					Surface Rubble-Dolomite w/calcite veins	
0.91	2.44	100%				Grey dolomite w/calcite veins	
2.44	3.96	100%				Grey dolomite w/calcite veins	
3.96	5.49	98%					
3.96	4.39					Grey dolomite w/calcite veins	
4.39	5.39					Blue-white coarsely crystalline barite w/calcite intermixed	
5.49	7.01	100%				Blue-white coarsely crystalline barite w/calcite intermixed	
7.01	8.53	98%				Blue-white coarsely crystalline barite w/calcite intermixed	
7.01	8.50						
8.53	10.06	100%				Blue-white coarsely crystalline barite w/calcite intermixed	
10.06	11.58	100%				Blue-white coarsely crystalline barite w/calcite intermixed	
11.58	13.11	100%				Blue-white coarsely crystalline barite w/calcite intermixed	



Mineral Division

KAREN EXPLORATION PROGRAM
DRILL HOLE RECORD

Drill Hole No. DDH-3

Date: 7/10/80

Property: KAREN CLAIMS

Drilled By: Globe Drilling

Co-ordinates: North _____ East _____

Logged By: M.C. Johnson

Elevation: _____

Total Depth: 26.82m

DEPTH		SAMPLE RECOVERY	SAMPLE NUMBER	ANALYSES			DESCRIPTION OF MATERIAL DRILLED
FROM	TO			Sp. Gr.	BaSO4	Cond.	
13.11	14.63	100%				Blue-white coarsely crystalline barite w/ calcite intermixed	
14.63	16.15	100%				Blue-white coarsely crystalline barite w/ calcite intermixed	
16.15	17.68	100%				Blue-white coarsely crystalline barite w/ calcite intermixed	
17.68	19.20	100%				Blue-white coarsely crystalline barite w/ calcite intermixed	
19.20	20.73	100%					
19.20	19.59					Blue-white coarsely crystalline barite w/ calcite intermixed	
19.59	20.73					Grey dolomite w/calcite veins	
20.73	22.25	100%				Grey dolomite w/calcite veins -- barite veins @ 20.73-20.88, 22.05-22.25	
22.25	23.77	100%					
22.25	23.64					Blue-white coarsely crystalline barite w/calcite intermixed	
23.64	23.77					Grey dolomite w/calcite veins & barite crystals @23.64	



Mineral Division

KAREN EXPLORATION PROGRAM
DRILL HOLE RECORD

Drill Hole No. DDH-4

Date: 7-10-80, 7-11-80

Property: Karen Claims

Drilled By: Globe Drilling

Co-ordinates: North 31,684.02 East 33,218.48

Logged By: M. C. Johnson

Elevation: 1120.44

Total Depth: 22.86m

Orientation: N45E, -50°N (GN42°30'E, -50N)

DEPTH		SAMPLE RECOVERY	SAMPLE NUMBER	ANALYSES			DESCRIPTION OF MATERIAL DRILLED
FROM	TO			Sp. Gr.	BaSO4	Cond.	
0	1.98					Surface Rubble - Dolomite with calcite veins	
1.98	2.44	100%				Grey dolomite with calcite veins	
2.44	3.96	100%				" " " " "	
3.96	5.49	100%				" " " " "	
5.49	7.01	100%				" " " " "	
7.01	8.53	100%				" " " " "	
8.53	10.06	100%				" " " " "	
10.06	11.58	100%				" " " " "	
11.58	13.11	100%				" " " " "	
13.11	14.63	100%				" " " " "	
14.63	16.15	100%				" " " " "	
16.15	17.68	100%				" " " " "	
17.68	19.20	100%				" " " " "	
19.20	20.73	100%				" " " " "	
20.73	21.95	100%				" " " " "	
21.95	22.86	100%				" " " " "	



Mineral Division

KAREN EXPLORATION PROGRAM
DRILL HOLE RECORD

Drill Hole No. DDH-5

Date: 7-11-80

Property: Karen Claims

Drilled By: Globe Drilling

Co-ordinates: North 31,691.41 East 33,204.67

Logged By: M. C. Johnson

Elevation: 1116.02

Total Depth: 34.44m

Orientation: S35W, -45°S (GS32° 30'W, -45S)

DEPTH		SAMPLE RECOVERY	SAMPLE NUMBER	ANALYSES			DESCRIPTION OF MATERIAL DRILLED
FROM	TO			Sp. Gr.	BaSO4	Cond.	
0	3.05					Surface rubble - dolomite with calcite veins	
3.05	3.96	100%				Grey dolomite with calcite veins -- barite veins @ 3.41-3.59m	
3.96	5.49	81%					
3.96	4.37					Grey dolomite with calcite veins	
4.37	5.19					Blue-white coarsely crystalline barite with milky white calcite intermixed	
5.49	7.01	93%					
5.49	6.91					Blue-white coarsely crystalline barite with milky white calcite intermixed	
7.01	8.53	100%				Blue white coarsely crystalline barite with milky white calcite intermixed	
8.53	10.06	100%				Blue white coarsely crystalline barite with milky white calcite intermixed	
10.06	11.58	100%				Blue-white coarsely crystalline barite with milky white calcite intermixed	
11.58	13.11	100%				Blue-white coarsely crystalline barite with milky white calcite intermixed	



Mineral Division

KAREN EXPLORATION PROGRAM
DRILL HOLE RECORD

Drill Hole No. DDH-5

Date: 7-11-80

Property: Karen Claims

Drilled By: Globe Drilling

Co-ordinates: North _____ East _____

Logged By: M. C. Johnson

Elevation: _____

Total Depth: 34.44m

DEPTH		SAMPLE RECOVERY	SAMPLE NUMBER	ANALYSES			DESCRIPTION OF MATERIAL DRILLED
FROM	TO			Sp. Gr.	BaSO4	Cond.	
13.11	14.63	100%				Blue-white coarsely crystalline barite with milky white calcite intermixed	
14.63	16.15	100%				Blue-white coarsely crystalline barite with milky white calcite intermixed	
16.15	17.68	100%				Blue-white coarsely crystalline barite with milky white calcite intermixed	
17.68	19.20	100%				Blue-white coarsely crystalline barite with milky white calcite intermixed	
19.20	20.73	100%				Blue-white coarsely crystalline barite with milky white calcite intermixed	
20.73	22.04	100%					
20.73	21.03					Blue-white coarsely crystalline barite with milky white calcite intermixed	
21.03	22.04	100%				Grey dolomite with calcite veins	



Mineral Division

KAREN EXPLORATION PROGRAM
DRILL HOLE RECORD

Drill Hole No. DDH-5

Date: 7-11-80

Property: Karen Claims

Drilled By: Globe Drilling

Co-ordinates: North _____ East _____

Logged By: M. C. Johnson

Elevation: _____

Total Depth: 34.44m

DEPTH		SAMPLE RECOVERY	SAMPLE NUMBER	ANALYSES			DESCRIPTION OF MATERIAL DRILLED
FROM	TO			Sp. Gr.	BaSO4	Cond.	
22.04	23.71	100%					
22.04	22.10					Grey dolomite	
22.10	22.14					Blue-white barite with calcite intermixed	
22.14	22.31					White recrystallized calcite	
22.31	22.69					Blue-white barite with calcite intermixed	
22.69	22.78					White recrystallized calcite	
22.78	23.14					Grey dolomite with calcite veins	
23.14	23.71					Blue-white coarsely crystalline barite with calcite intermixed	
23.71	25.27	100%					
23.71	24.19					Blue-white coarsely crystalline barite with calcite intermixed	
24.19	24.43					Grey dolomite with calcite veins	
24.43	24.49					Blue-white barite with calcite intermixed	
24.49	25.27					Grey dolomite with calcite veins	
25.27	26.82	100%					
25.27	25.61					Grey dolomite with calcite veins	
25.61	25.67					Blue-white coarsely crystalline barite	
25.67	26.82					Grey dolomite "laced" with calcite and occasional coarse calcite veinlet. <1cm barite veinlet 26.67-26.82	



Mineral Division

KAREN EXPLORATIO. ROGRAM
DRILL HOLE RECORD

Page 1 of 5

Drill Hole No. DDH-6Date: 7-12-80Property: Karen ClaimsDrilled By: Globe DrillingCo-ordinates: North 31,692.05 East 33,205.18Logged By: M.C. JohnsonElevation: 1115.95Total Depth: 37.44mOrientation: S35W,-60S (GS32° 30'W,-60S)

DEPTH		SAMPLE RECOVERY	SAMPLE NUMBER	ANALYSES			DESCRIPTION OF MATERIAL DRILLED
FROM	TO			Sp. Gr.	BaSO4	Cond.	
0	1.83					Surface rubble- dolomite with calcite veins	
1.83	2.44	25%					
1.83	1.98					Grey dolomite with calcite veins	
2.44	3.96	100%				Grey dolomite with calcite veins	
3.96	5.49	77%					
3.96	4.03					Grey dolomite with calcite veins	
4.03	5.13					Blue-white coarsely crystalline barite with milky white calcite intermixed	
5.49	7.01	100%				Blue-white coarsely crystalline barite with milky white calcite intermixed	
7.01	8.53	100%				Blue-white coarsely crystalline barite with milky white calcite intermixed	
8.53	10.06	74%					
8.53	9.66					Blue-white coarsely crystalline barite with milky white calcite intermixed	
10.06	11.58	87%					
10.06	11.38					Blue-white coarsely crystalline barite with milky white calcite intermixed	



Mineral Division

KAREN EXPLORATION PROGRAM
DRILL HOLE RECORD

Drill Hole No. DDH-6

Date: 7-12-80

Property: Karen Claims

Drilled By: Globe Drilling

Co-ordinates: North _____ East _____

Logged By: M.C. Johnson

Elevation: _____

Total Depth: 37.44m

DEPTH		SAMPLE RECOVERY	SAMPLE NUMBER	ANALYSES			DESCRIPTION OF MATERIAL DRILLED
FROM	TO			Sp. Gr.	BaSO4	Cond.	
11.58	13.11	100%				Blue-white coarsely crystalline barite with calcite intermixed	
13.11	14.63	100%				Blue-white coarsely crystalline barite with calcite intermixed	
14.63	16.15	100%				Blue-white coarsely crystalline barite with calcite intermixed	
16.15	17.68	100%				Blue-white coarsely crystalline barite with calcite intermixed	
17.68	19.20	100%				Blue-white coarsely crystalline barite with calcite intermixed	
19.20	20.73	100%					
19.20	19.30					Blue-white coarsely crystalline barite with calcite intermixed	
19.30	20.73	100%				Grey dolomite with calcite veins -- large (6 cm) calcite vein @ 19.80 - 19.86m.	



Mineral Division

KAREN EXPLORATIO PROGRAM
DRILL HOLE RECORD

Drill Hole No. DDH-6

Date: 7-12-80

Property: Karen Claims

Drilled By: Globe Drilling

Co-ordinates: North _____ East _____

Logged By: M.C. Johnson

Elevation: _____

Total Depth: 37.44m

DEPTH		SAMPLE RECOVERY	SAMPLE NUMBER	ANALYSES			DESCRIPTION OF MATERIAL DRILLED
FROM	TO			Sp. Gr.	BaSO4	Cond.	
20.73	22.25	100%					
20.73	21.50					Grey dolomite with calcite veins	
21.50	22.25					Blue-white coarsely crystalline barite with calcite intermixed	
22.25	23.77	100%					
22.25	22.61					Blue-white coarsely crystalline barite with calcite intermixed	
22.61	23.77					Grey dolomite with calcite veins	
23.77	25.30	100%					
23.77	24.31					Grey dolomite with calcite veins	
24.31	24.49					Blue-white coarsely crystalline barite with calcite intermixed	
24.49	25.30					Grey dolomite with calcite veins up to 7cm wide	
25.30	26.82	100%				Grey dolomite with calcite veins up to 11cm wide	
26.82	28.35	100%				Grey dolomite with calcite veins up to 39cm wide	
						blue-white barite vein @ 27.42-27.49m and 1cm barite @ dolomite-calcite vein contact @ 28.23m.	



Mineral Division

KAREN EXPLORATION PROGRAM
DRILL HOLE RECORD

Drill Hole No. DDH-6

Date: 7/12/80

Property: _____

Drilled By: Globe Drilling

Co-ordinates: North _____ East _____

Logged By: M. C. Johnson

Elevation: _____

Total Depth: 37.44 m

DEPTH		SAMPLE RECOVERY	SAMPLE NUMBER	ANALYSES			DESCRIPTION OF MATERIAL DRILLED
FROM	TO			Sp. Gr.	BaSO4	Cond.	
28.35	29.57	100%				White calcite vein--barite & calcite-dolomite	
28.35	28.48					contact @ 28.48m	
28.48	28.97					Grey dolomite with calcite veins	
28.97	29.32					White calcite vein--barite vein last 2 cm of this interval	
29.57	31.39	100%					
29.57	30.04					Blue-white barite with calcite veins	
30.04	30.50					Grey dolomite with calcite veins--barite crystals @ 30.50 m.	
30.50	30.54					Blue-white coarsely crystalline barite w/calcite intermixed	
30.54	31.39					Grey dolomite with calcite veins	
31.39	32.92	100%					
31.39	31.42					Blue-white coarsely crystalline barite w/calcite intermixed	
31.42	32.92					Grey dolomite with calcite veins	
32.92	34.44	100%					
32.92	33.44					Blue-white coarsely crystalline barite with calcite intermixed	



Mineral Division

KAREN EXPLORATION PROGRAM
DRILL HOLE RECORD

Drill Hole No. DDH - 7

Date: 7-13-80

Property: Karen Claims

Drilled By: Globe Drilling

Co-ordinates: North 31,700.59 East 33,194.11

Logged By: M.C. Johnson

Elevation: 1111.91

Total Depth: 25.30m

Orientation: S40W, -45° (GS37°30'W, -45S)

DEPTH		SAMPLE RECOVERY	SAMPLE NUMBER	ANALYSES			DESCRIPTION OF MATERIAL DRILLED
FROM	TO			Sp. Gr.	BaSO4	Cond.	
0	3.96					Surface rubble-dolomite with calcite veins	
3.96	5.49	100%				Grey dolomite with calcite veins	
5.49	7.01	100%				" " " " "	
7.01	8.53	100%				" " " " "	
8.53	10.06	70%					
8.53	9.60					Grey dolomite with calcite veins	
10.06	11.58	95%					
10.06	11.51					Grey dolomite with calcite veins	
11.58	13.11	80%					
11.58	12.80					Grey dolomite with calcite veins	
13.11	14.63	57%					
13.11	13.98					Grey dolomite with calcite veins	
14.63	16.15	90%					
14.63	16.00					Grey dolomite with calcite veins--14.39-14.48m Fe staining common @ Calcite-dolomite contact	
16.15	17.68	25%					
16.15	16.53					Grey dolomite with calcite veins	
17.68	19.20	100%				Grey dolomite with calcite veins	



Mineral Division

KAREN EXPLORATION PROGRAM
DRILL HOLE RECORD

Drill Hole No. DDH-8

Date: 7-13-80, 7-14-80

Property: Karen Claims

Drilled By: Globe Drilling

Co-ordinates: North 31,692.13 East 33,185.03

Logged By: M. C. Johnson

Elevation: 1112.57

Total Depth: 45.11m.

Orientation: Vertical

DEPTH		SAMPLE RECOVERY	SAMPLE NUMBER	ANALYSES			DESCRIPTION OF MATERIAL DRILLED
FROM	TO			Sp. Gr.	B ₂ S ₀₄	Cond.	
0	1.52					Surface rubble-dolomite with calcite veins	
1.52	2.13	7%					
1.52	1.62					Grey dolomite with calcite veins--core broken to rubble	
2.13	3.96	66%					
2.13	3.13					Grey dolomite with calcite veins--core broken to rubble	
3.96	5.43	66%					
3.96	4.96					Grey dolomite with calcite veins--core broken to rubble	
5.43	7.01	84%					
5.43	6.70					Grey dolomite with calcite veins	
7.01	8.53	91%					
7.01	8.40					Grey dolomite with calcite veins up to 3cm wide	
8.53	10.06	79%					
8.53	9.73					Grey dolomite with calcite veins up to 3cm wide	
10.06	11.58	18%					
10.06	10.39					Grey dolomite with calcite veins	



Mineral Division

KAREN EXPLORATION PROGRAM
DRILL HOLE RECORD

Drill Hole No. DDH-8

Date: 7-13-80, 7-14-80

Property: Karen Claims

Drilled By: Globe Drilling

Co-ordinates: North _____ East _____

Logged By: M. C. Johnson

Elevation: _____

Total Depth: 45.11m

DEPTH		SAMPLE RECOVERY	SAMPLE NUMBER	ANALYSES			DESCRIPTION OF MATERIAL DRILLED
FROM	TO			Sp. Gr.	BaSO4	Cond.	
11.58	13.72	76%					
11.58	12.74					Grey dolomite with calcite veins up to 2cm wide -- core broken to rubble 1st 35cm	
13.72	14.63	33%					
13.72	14.22					Grey dolomite with calcite veins up to 2cm wide	
14.63	16.15	76%					
14.63	15.78					Grey dolomite with calcite veins up to .3cm wide	
16.15	17.68	67%					
16.15	17.17					Grey dolomite with calcite veins up to 3cm wide	
17.68	19.20	66%					
17.68	18.68					Grey dolomite with calcite veins up to 5cm wide	
19.20	20.73	76%					
19.20	20.35					Grey dolomite with calcite veins up to 4cm side	
20.73	22.25	72%					
20.73	21.83					Grey dolomite with calcite veins	



Mineral Division

KAREN EXPLORATION PROGRAM
DRILL HOLE RECORD

Drill Hole No. DDH-8

Date: 7-13-80, 7-14-80

Property: Karen Claims

Drilled By: Globe Drilling

Co-ordinates: North _____ East _____

Logged By: M. C. Johnson

Elevation: _____

Total Depth: 45.11m

DEPTH		SAMPLE RECOVERY	SAMPLE NUMBER	ANALYSES			DESCRIPTION OF MATERIAL DRILLED
FROM	TO			Sp. Gr.	BaSO4	Cond.	
22.25	23.77	88%					
22.25	22.58					Grey dolomite with calcite veins	
22.58	23.38					Blue-white coarsely crystalline barite with calcite intermixed	
23.38	23.58					Grey dolomite with calcite veins	
23.77	25.30	74%					
23.77	23.86					Grey dolomite with calcite veins	
23.86	24.90					Blue-white coarsely crystalline barite with calcite intermixed	
25.30	26.82	82%					
25.30	26.54					Blue-white coarsely crystalline barite with calcite intermixed--calcite and 2cm "islands" of dolomite predominant last 14cm of this interval	
26.82	28.35	96%					
26.82	26.95					Grey dolomite with calcite veins	
26.95	27.15					Grey dolomite "laced" with calcite, barite veins	
27.15	28.28					Blue-white coarsely crystalline barite with calcite intermixed--Fe-stained calcite common along broken surface of core	



Mineral Division

KAREN EXPLORATION PROGRAM
DRILL HOLE RECORD

Drill Hole No. DDH-8

Date: 7-13-80, 7-14-80

Property: Karen Claims

Drilled By: Globe Drilling

Co-ordinates: North _____ East _____

Logged By: M. C. Johnson

Elevation: _____

Total Depth: 45.11m

DEPTH		SAMPLE RECOVERY	SAMPLE NUMBER	ANALYSES			DESCRIPTION OF MATERIAL DRILLED
FROM	TO			Sp. Gr.	BaSO4	Cond.	
28.35	29.87	78%					
28.35	29.33					Blue-white coarsely crystalline barite with calcite intermixed	
29.33	29.54					Grey dolomite with calcite veins	
29.87	31.39	95%					
29.87	29.92					Grey dolomite with calcite veins	
29.92	30.14					Blue-white coarsely crystalline barite with calcite intermixed	
30.14	30.28					Grey dolomite with calcite veins	
30.28	31.32					Blue-white coarsely crystalline barite with calcite intermixed--barite pitted and has manganese(?) dendrites plus brown clay along broken ore surfaces @ 30.72-30.92cm	
31.39	32.92	95%					
31.39	32.84					Blue-white coarsely crystalline barite with calcite intermixed--barite pitted and shows brown clay along broken core surface	
32.92	34.44	69%					
32.92	33.97					Blue-white coarsely crystalline barite with calcite intermixed--barite pitted and shows brown clay along core surfaces	



Mineral Division

KAREN EXPLORATIC PROGRAM
DRILL HOLE RECORD

Drill Hole No. DDH-8

Date: 7-13-80, 7-14-80

Property: Karen Claims

Drilled By: Globe Drilling

Co-ordinates: North _____ East _____

Logged By: M.C. Johnson

Elevation: _____

Total Depth: 45.11m

DEPTH		SAMPLE RECOVERY	SAMPLE NUMBER	ANALYSES			DESCRIPTION OF MATERIAL DRILLED
FROM	TO			Sp. Gr.	BaSO4	Cond.	
34.44	35.97	86%					
34.44	35.74					Blue-white coarsely crystalline barite with calcite intermixed--pitted barite with clay along broken core surfaces common @ 35.45-35.74 m	
35.97	37.49	88%					
35.97	36.93					Blue-white coarsely crystalline barite with calcite intermixed	
36.93	37.13					pitted barite	
37.13	37.31					Blue-white coarsely crystalline barite with calcite intermixed	
37.49	39.01	66%					
37.49	38.49					Blue-white coarsely crystalline barite with calcite intermixed-pitted barite common	
39.01	40.54	81%					
39.01	40.24					Blue-white coarsely crystalline barite with calcite intermixed--pitted barite common	



Mineral Division

KAREN EXPLORATION PROGRAM
DRILL HOLE RECORD

Page 1 of 3

Drill Hole No. DDH-9Date: 7-14-80, 7-15-80Property: Karen ClaimsDrilled By: Globe DrillingCo-ordinates: North 31,691.63 East 33,184.73Logged By: M. C. JohnsonElevation: 1112.71mTotal Depth: 23.77mOrientation: S40, -45S (GS37°30'W, -45S)

DEPTH		SAMPLE RECOVERY	SAMPLE NUMBER	ANALYSES			DESCRIPTION OF MATERIAL DRILLED
FROM	TO			Sp. Gr.	BaSO4	Cond.	
0	3.96						Surface rubble--barite (?) boulders, dolomite with calcite veins
3.96	5.49	100%					
3.96	4.04						White coarsely crystalline barite with calcite intermixed
4.04	5.49						Grey dolomite with calcite veins -- core broken to rubble
5.49	7.01	66%					
5.49	6.49						Grey dolomite with calcite veins -- core broken to rubble
7.01	9.14	47%					
7.01	8.41						Grey dolomite with calcite veins
9.14	10.36	71%					
9.14	10.01						Grey dolomite with calcite veins - recrystallized calcite-silica(?) rim common @ vein-dolomite contact
10.36	11.58	73%					
10.36	11.24						Grey dolomite with calcite veins-recrystallized calcite-silica (?) Rim common @ vein-dolomite contact



Mineral Division

KAREN EXPLORATIO. PROGRAM
DRILL HOLE RECORD

Drill Hole No. DDH-10

Date: 7-15-80, 7-16-80

Property: Karen Claims

Drilled By: Globe Drilling

Co-ordinates: North _____ East _____

Logged By: M.C. Johnson

Elevation: _____

Total Depth: 45.11m

DEPTH		SAMPLE RECOVERY	SAMPLE NUMBER	ANALYSES			DESCRIPTION OF MATERIAL DRILLED
FROM	TO			Sp. Gr.	BaSO4	Cond.	
22.19	23.44	82%					
22.19	23.22					Grey dolomite with calcite veins	
23.44	24.08	55%					
23.44	23.79					Grey dolomite with calcite veins	
24.08	25.30	59%					
24.08	24.80					Grey dolomite with calcite veins--one barite veinlet 1cm wide	
25.30	26.67	51%					
25.30	25.43					Grey dolomite with barite veinlets	
25.43	26.00					Blue-white coarsely crystalline barite	
26.67	28.35	83%					
26.67	28.06					Blue-white coarsely crystalline barite with calcite intermixed	
28.35	29.87	39%					
28.35	28.85					Blue-white coarsely crystalline barite with calcite intermixed	
28.85	28.95					Grey dolomite	



Mineral Division

KAREN EXPLORATION PROGRAM
DRILL HOLE RECORD

Drill Hole No. DDH-10

Date: 7-15-80, 7-16-80

Property: Karen Claims

Drilled By: Globe Drilling

Co-ordinates: North _____ East _____

Logged By: M.C. Johnson

Elevation: _____

Total Depth: 45.11m

DEPTH		SAMPLE RECOVERY	SAMPLE NUMBER	ANALYSES			DESCRIPTION OF MATERIAL DRILLED
FROM	TO			Sp. Gr.	BaSO4	Cond.	
29.87	30.27	100%					
29.87	30.01					Grey dolomite with calcite veins	
30.01	30.27					Blue-white coarsely crystalline barite with calcite intermixed	
30.27	31.30	83%					
30.27	31.13					Blue-white coarsely crystalline barite with calcite intermixed	
31.30	32.92	82%					
31.30	32.63					Blue-white coarsely crystalline barite with calcite intermixed--dolomite @ 32.38-32.43m	
32.92	34.44	74%					
32.92	34.04					Blue-white coarsely crystalline barite with calcite intermixed	
34.44	34.75	58%					
34.44	34.62					Blue-white coarsely crystalline barite with calcite intermixed	



Mineral Division

KAREN EXPLORATION PROGRAM
DRILL HOLE RECORD

Drill Hole No. DDH-10

Date: 7-15-80, 7-16-80

Property: Karen Claims

Drilled By: Globe Drilling

Co-ordinates: North _____ East _____

Logged By: M.C. Johnson

Elevation: _____

Total Depth: 45.11m

DEPTH		SAMPLE RECOVERY	SAMPLE NUMBER	ANALYSES			DESCRIPTION OF MATERIAL DRILLED
FROM	TO			Sp. Gr.	BaSO4	Cond.	
34.75	35.97	95%					
34.75	35.91					Blue-white coarsely crystalline barite with calcite intermixed--clay 1st 22cm of this interval	
35.97	37.49	100%					
						Blue-white coarsely crystalline barite with calcite intermixed	
37.49	39.01	93%					
37.49	37.70					Blue-white coarsely crystalline barite with calcite intermixed	
37.70	38.06					Grey dolomite with calcite veins-recrystallized calcite rim @ vein-dolomite contact	
38.06	38.36					Blue-white coarsely crystalline barite with calcite intermixed	
38.36	38.91					Grey dolomite with calcite veins-recrystallized calcite rim @ vein-dolomite contact	
39.01	40.54	90%					
39.01	40.38					Grey dolomite with calcite veins	



Mineral Division

KAREN EXPLORATION PROGRAM
DRILL HOLE RECORD

Drill Hole No. DDH-11

Date: 7-16-80, 7-17-80, 7-18-80

Property: Karen Claims

Drilled By: Globe Drilling

Co-ordinates: North _____ East _____

Logged By: M.C. Johnson

Elevation: _____

Total Depth: 55.78m

DEPTH		SAMPLE RECOVERY	SAMPLE NUMBER	ANALYSES			DESCRIPTION OF MATERIAL DRILLED
FROM	TO			Sp. Gr.	BaSO4	Cond.	
14.63	17.37	86%					
14.63	16.99					Grey dolomite with calcite veins--recrystallized calcite rim @ vein-dolomite contact	
17.37	18.14	91%					
17.37	18.06					Grey dolomite with calcite veins--recrystallized calcite rim @ vein-dolomite contact	
18.14	20.12	18%					
18.14	18.49					Grey dolomite with calcite veins--recrystallized calcite rim @ vein-dolomite contact	
20.12	21.34	26%					
20.12	20.49					Grey dolomite	
21.34	22.86	60%					
21.34	21.44					Grey dolomite	
21.44	21.64					White coarsely crystalline barite intermixed with calcite	
21.64	22.25					Grey dolomite with calcite veins--recrystallized calcite rim @ vein dolomite contact	



Mineral Division

KAREN EXPLORATION PROGRAM
DRILL HOLE RECORD

Drill Hole No. DDH-11

Date: 7-16-80, 7-17-80, 7-18-80

Property: Karen Claims

Drilled By: Globe Drilling

Co-ordinates: North _____ East _____

Logged By: M. C. Johnson

Elevation: _____

Total Depth: 55.78m

DEPTH		SAMPLE RECOVERY	SAMPLE NUMBER	ANALYSES			DESCRIPTION OF MATERIAL DRILLED
FROM	TO			Sp. Gr.	BaSO4	Cond.	
22.86	24.69	79%					
22.86	24.30					Grey dolomite with calcite veins-recrystallized calcite rim@ vein-dolomite contact	
24.69	26.06	64%					
24.69	25.57					Grey dolomite with calcite veins -- recrystallized calcite rim @ vein-dolomite contact--barite veinlets @ 24.69-24.71 & 25.40-25.57m	
26.06	26.82	76%					
26.06	26.64					Blue-white coarsely crystalline barite with calcite intermixed--grey dolomite @ 26.06-26.14m	
26.82	29.17	85%					
26.82	27.74					Grey dolomite with calcite-barite veinlets<3cm wide	
27.74	28.81					Blue-white coarsely crystalline barite with calcite intermixed	
29.17	29.69	100%				Blue-white coarsely crystalline barite with calcite intermixed	



Mineral Division

KAREN EXPLORATIO. PROGRAM
DRILL HOLE RECORD

Drill Hole No. DDH-11

Date: 7-16-80, 7-17-80, 7-18-80

Property: Karen Claims

Drilled By: Globe Drilling

Co-ordinates: North _____ East _____

Logged By: M.C. Johnson

Elevation: _____

Total Depth: 55.78m

DEPTH		SAMPLE RECOVERY	SAMPLE NUMBER	ANALYSES			DESCRIPTION OF MATERIAL DRILLED
FROM	TO			Sp. Gr.	BaSO4	Cond.	
43.50	46.63	86%					
43.50	44.35					Blue-white coarsely crystalline barite with calcite intermixed--brown clay & pitted barite predominant	
						43.69-44.35m pitted	
44.35	46.19	100%				Blue-white coarsely crystalline pitted barite w/ calcite intermixed	
46.63	48.01	29%					
46.63	47.03					Blue-white coarsely crystalline extremely pitted barite with calcite intermixed	
48.01	49.68	47%					
48.01	48.20					Blue-white coarsely crystalline pitted barite with calcite intermixed	
48.20	48.30					Grey dolomite	
48.30	48.44					Brown clay	
48.44	48.79					Grey dolomite	
49.68	52.73	26%					
49.68	50.46					Grey dolomite with calcite-barite veinlets less than 2cm wide	



EDITION 1 116 G/1 (859000m. E.)

LEGEND - LÉGENDE

ROADS AND RELATED FEATURES	ROUTES ET OUVRAGES CONNEXES
HARD SURFACE, ALL WEATHER	SURFACE PAVÉE, TOUTES SAISONS
LOOSE SURFACE	GRAVIER
CART TRACK, WINTER ROAD	CHEMIN DE TERRE, D'HIVER
TRAIL, CUT LINE, PORTAGE	SENTIER, FENCE, PORTAGE
BUILT-UP AREA	AGGLOMÉRATION
RAILWAY, SIGN, STATION, STOP	CHEMIN DE FER, VOIE D'ÉVÈNEMENT, GARE, ARRÊT
BRIDGE	PONT
SEAPLANE BASE, ANCHORAGE	HYDROAÉROPORT, MOURLAGE
LANDMARK FEATURES	POINTS DE REPÈRE
HOUSE, BARN	MAISON, GRANGE
CHURCH, SCHOOL	ÉGLISE, ÉCOLE
POST OFFICE	BUREAU DE POSTE
HISTORICAL SITE	LIEU HISTORIQUE
TOWERS, FIRE, RADIO	TOURS, FEU, RADIO
WELL, OIL, GAS	PUIX, PÉTROLE, GAZ
TANK, OIL, GASOLINE, WATER	RÉSERVOIR, PÉTROLE, ESSENCE, EAU
TELEPHONE LINE	LIGNE TÉLÉPHONIQUE
POWER TRANSMISSION LINE	LIGNE DE TRANSPORT D'ÉNERGIE
MINE	MINE
CUTTING, EMBANKMENT	DÉBLAI, REMBLAI
GRAVIER PIT	GRAVIER
BOUNDARIES AND SURVEY CONTROL	FRONTIÈRES ET POINTS DE RÉFÉRENCES
INTERNATIONAL, PROVINCIAL, BOUNDARY MONUMENT	INTERNATIONALE, PROVINCIALE, BORNE FRONTIÈRE
COUNTY, DISTRICT	COMTÉ, DISTRICT
TOWNSHIP, PARISH, SURVEYED, UNSURVEYED	CANTON, PAROISSE, ARPENTÉE, NON ARPENTÉE
TOWNSHIP, D.L.S. - SURVEYED, UNSURVEYED	TOWNSHIP, ATC-ARPENTÉE, NON ARPENTÉE
- SECTION CORNERS	COINS DE SECTION
MUNICIPALITY	MUNICIPALITÉ
INDIAN RESERVE, PARK, ETC.	RÉSERVE INDIENNE, PARC, ETC.
HORIZONTAL SURVEY POINT	REPÈRE PLANIMÉTRIQUE
BENCH MARK WITH ELEVATION	REPÈRE DE NIVELLEMENT AVEC COTE
SPOT ELEVATION, PRECISE, LAND, WATER	POINT COTÉ, PRÉCIS, SUR TERRE, SUR L'EAU
DRAINAGE AND RELATED FEATURES	DRAINAGE ET OUVRAGES CONNEXES
STREAM, SHORELINE, INDEFINITE	COURS D'EAU, RIVE, IMPRÉCISE
DIRECTION OF FLOW	DIRECTION DU COURANT
LAKE, INTERMITTENT LAKE	LAC, LAC INTERMITTENT
FLOODED LAND	TERRAIN INONDÉ
MARSH, SWAMP, WOODS	MARAIS, MARECAGE (BOIS)
DIRY RIVER BED WITH CHANNELS	LIT DE COURS D'EAU TAIN AVEC CHENEAUX
SAND, ABOVE, IN WATER	SABLE, AU DESSUS, DANS L'EAU
STRING BOG	MANÉCAIE EN ENFILADE
TUNDRA, POND, POLYDONS	TOUNDRA, ETANGS, SOLS POLYDONAUX
RAPIDS, FALLS, RAPIDS	RAPIDES, CHUTES, RAPIDES
FORESHORE FLATS	ESTUAIRE
ROCK	ROCHER
DAM	BARRAGE
WHARF	QUAI
WINDMILL	MOULIN
RELIEF FEATURES	RELIEF
CONTOUR	COURBES DE NIVEAU
APPROXIMATE CONTOURS	COURBES DE NIVEAU APPROXIMATIVES
DEPRESSION CONTOUR	COURBE DE CUVETTE
SPOT ELEVATION, APPROXIMATE, LAND, WATER	POINT COTÉ, APPROXIMATIF, SUR TERRE, SUR L'EAU
ESKER	ESKER
PINGO	PINGO
SAND, SAND DUNES	SABLE, DUNES
PALSA BOG	PALSE
WOODED AREA	RÉGION BOISÉE
CLEARED AREA	RÉGION DÉBOISÉE

PHOTOGRAPHY PHOTOGRAPHIE

COMPILATION RESTITUTION

REVISION REVISION

GRID ZONE DESIGNATION IDENTIFICATION DU CARRE DE 100 000 M. (100 000 M. QUADRILLAGE)

7W FC

LEURE OF METHOD USED TO GIVE A REFERENCE TO METRES (EXEMPLE DE LA METHODE EMPLOYEE POUR FAIRE DES REPÈRES A UN METRE PRES)

REFERENCE POINT CHURCH - EGLISE (en abrégé)

EASTING Read number on grid line immediately to left of point

LONGITUDE EST Note the number of the figure of quadrangle immediately to the right of the point

NORTHING Read number on grid line immediately below point

LATITUDE NORTH Note the number of the figure of quadrangle immediately to the left of the point

GRID REFERENCE SAMPLE

ONE THOUSAND METRE UNIVERSAL TRANSVERSE MERCATOR GRID ZONE 7 QUADRILLAGE DE MILLE METRES UNIVERSEL TRANSVERSE DE MERCATOR

116 G/7 116 G/8 116 H/5

116 G/2 116 G/1 116 H/4

116 B/15 116 B/16 116 A/13

NOTE: GRID TICKS WITH NUMBERS IN BRACKETS OR WITH NO NUMBER INDICATE THE 1000 METRE 1 M GRID

LES TRAIT NUMEROTES ENTRE PARENTHESES OU SANS NUMERES INDICENT LE QUADRILLAGE DE 1000 METRES U.T.M.

CONVERSION SCALE FOR ELEVATIONS

Metres 30 20 10 0 100 200 300 400 500 600 700 800 900 1000

Feet 100 200 300 400 500 600 700 800 900 1000

THE 1977 MAGNETIC BEARING IS 31°18' (556 METRES) EAST OF GRID NORTH

ANNUAL CHANGE DECREASING 1.9'

GRID NORTH IS 2°30' (44 METRES) EAST OF TRUE NORTH FOR CENTRE OF MAP

LA REPÈRE MAGNETIQUE EN 1977 EST A 31°18' (556 METRES) EST DU NORD DU QUADRILLAGE

VARIATION ANNUELLE LE DECROISSANTE 1.9'

NORD DU QUADRILLAGE EST 2°30' (44 METRES) A L'EST DU NORD GÉOGRAPHIQUE DU CENTRE DE LA CARTE

Milchem HOUSTON TEXAS

KAREN CLAIMS LOCATION MAP (I THRU B) YA 32582 THRU YA 32589

SCALE 1:50,000 APPR. B.V.T. DATE DRAWN R.E.C. DATE JULY 1980 CHKD. SHEET OF

ENGINEER CREEK 116 G/1 EDITION 1

PRODUCED BY THE SURVEYS AND MAPPING BRANCH, DEPARTMENT OF ENERGY, MINES AND RESOURCES, OTTAWA, 1977. NO DIMENSION CURRENT AS OF 1981.

COPIES MAY BE OBTAINED FROM THE CANADA MAP OFFICE, DEPARTMENT OF ENERGY, MINES AND RESOURCES, OTTAWA, OR YOUR NEAREST MAP DEALER.

© CANADA COPYRIGHTS RESERVED 1977.

ELEVATIONS IN METRES ABOVE MEAN SEA LEVEL
CONTOUR INTERVAL 20 METRES

NORTH AMERICAN DATUM 1927
TRANSVERSE MERCATOR PROJECTION

Scale 1:50,000 Échelle

Miles 0 1 2 3
Kilometres 0 1000 2000 3000 4000
Yards 0 1000 2000 3000 4000

ENGINEER CREEK
YUKON TERRITORY

ELEVATIONS IN METRES AU-DESSUS DU NIVEAU MOYEN DE LA MER
ÉQUIDISTANCE DES COURBES 20 MÈTRES

SISTÈME DE RÉFÉRENCE GÉODÉSIQUE NORD-AMÉRICAIN 1927
PROJECTION TRANSVERSE DE MERCATOR

ÉTABLI PAR LA DIRECTION DES LEVÉS ET DE LA CARTOGRAPHIE, MINISTÈRE DE L'ÉNERGIE, DES MINES ET DES RESSOURCES, OTTAWA, EN 1977. RENSEIGNEMENTS À JOUR EN 1981.

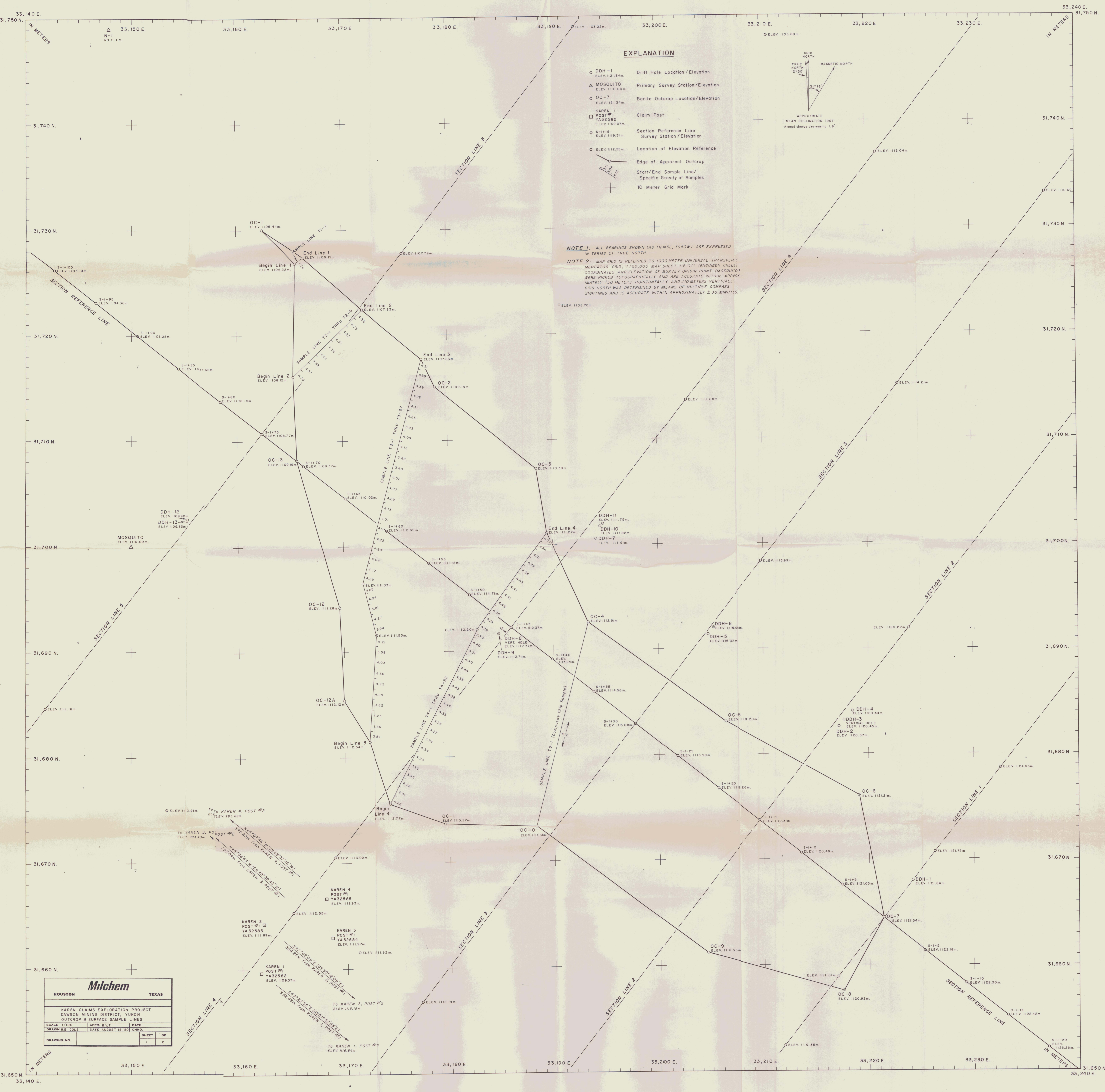
CES CARTES SONT EN VENTE AU BUREAU DES CARTES DU CANADA, MINISTÈRE DE L'ÉNERGIE, DES MINES ET DES RESSOURCES, OTTAWA, OU CHEZ LE VENDEUR LE PLUS PRÈS.

© CANADA 1977. TOUS DROITS RÉSERVÉS

ÉTABLI PAR LA DIRECTION DES LEVÉS ET DE LA CARTOGRAPHIE, MINISTÈRE DE L'ÉNERGIE, DES MINES ET DES RESSOURCES, OTTAWA, EN 1977. RENSEIGNEMENTS À JOUR EN 1981.

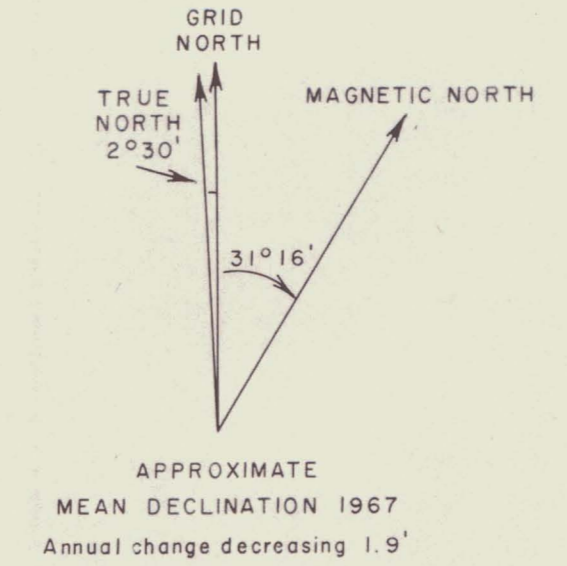
CES CARTES SONT EN VENTE AU BUREAU DES CARTES DU CANADA, MINISTÈRE DE L'ÉNERGIE, DES MINES ET DES RESSOURCES, OTTAWA, OU CHEZ LE VENDEUR LE PLUS PRÈS.

© CANADA 1977. TOUS DROITS RÉSERVÉS



EXPLANATION

- DDH-1
ELEV. 1121.84m Drill Hole Location/Elevation
- △ MOSQUITO
ELEV. 1110.00m Primary Survey Station/Elevation
- OC-7
ELEV. 1121.34m Barite Outcrop Location/Elevation
- KAREN 1
POST #1
ELEV. 1109.07m Claim Post
- S-115
ELEV. 1119.31m Section Reference Line
Survey Station/Elevation
- ELEV. 1112.95m Location of Elevation Reference
- Edge of Apparent Outcrop
- Start/End Sample Line/
Specific Gravity of Samples
- + 10 Meter Grid Mark



NOTE 1: ALL BEARINGS SHOWN (AS TN 45E, TS 40W) ARE EXPRESSED IN TERMS OF TRUE NORTH.

NOTE 2: MAP GRID IS REFERRED TO 1000 METER UNIVERSAL TRANSVERSE MERCATOR GRID, 1:50,000 MAP SHEET 116 5/1 (ENGINEER CREEK). COORDINATES AND ELEVATION OF SURVEY ORIGIN POINT (MOSQUITO) WERE PICKED TOPOGRAPHICALLY AND ARE ACCURATE WITHIN APPROXIMATELY 50 METERS HORIZONTALLY AND 10 METERS VERTICALLY. GRID NORTH WAS DETERMINED BY MEANS OF MULTIPLE COMPASS SIGHTINGS AND IS ACCURATE WITHIN APPROXIMATELY 1.30 MINUTES.

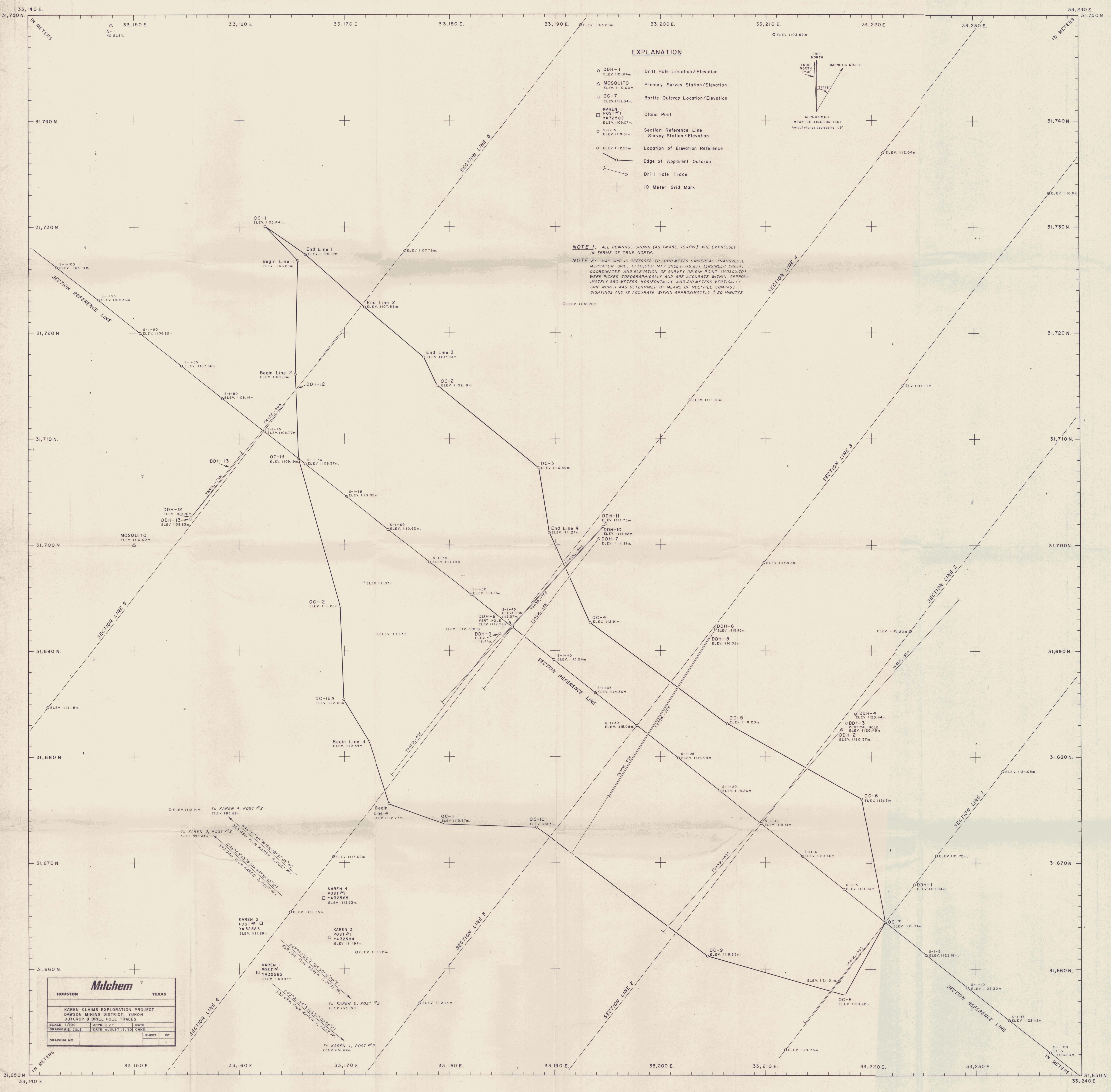
Milchem	
HOUSTON	TEXAS
KAREN CLAIMS EXPLORATION PROJECT DANSON MINING DISTRICT, YUKON OUTCROP & SURFACE SAMPLE LINES	
SCALE 1/100	APPR. S.V.T.
DATE AUGUST 15, 80	CHRD.
DRAWING NO. 1	SHEET 2 OF 2

To KAREN 4, POST #2
ELEV. 993.82m
346°07'46"W (GS 48°17'46"W)
346.63m From KAREN 4, POST #1

To KAREN 3, POST #2
ELEV. 993.43m
346°06'11"W (GS 48°16'43"W)
347.02m From KAREN 3, POST #1

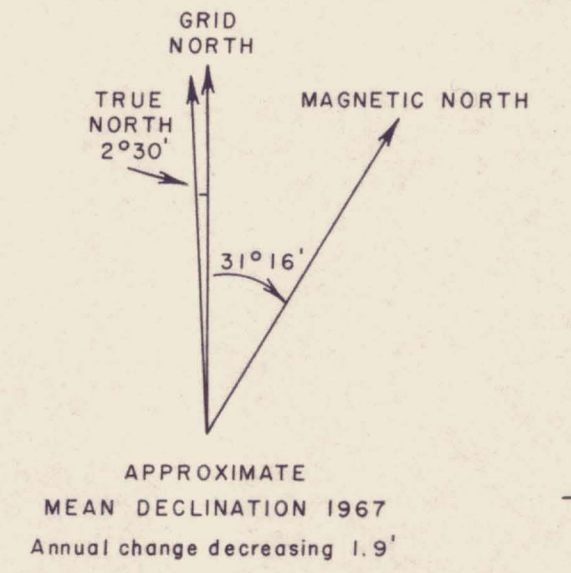
To KAREN 2, POST #2
ELEV. 1115.19m
347°20'25"E (GS 49°16'09"E)
348.22m From KAREN 5, POST #1

To KAREN 1, POST #2
ELEV. 1105.84m
349°20'18"E (GS 51°26'32"E)
352.49m From KAREN 1, POST #1



EXPLANATION

- DDH-1
ELEV. 1121.84m
Drill Hole Location/Elevation
- △ MOSQUITO
ELEV. 1110.00m
Primary Survey Station/Elevation
- OC-7
ELEV. 1121.34m
Barite Outcrop Location/Elevation
- KAREN 1
POST #1
YA32582
ELEV. 1109.07m
Claim Post
- S-1415
ELEV. 1119.31m
Section Reference Line
Survey Station/Elevation
- S-1415
ELEV. 1112.55m
Location of Elevation Reference
- Edge of Apparent Outcrop
- Drill Hole Trace
- + 10 Meter Grid Mark



NOTE 1: ALL BEARINGS SHOWN (AS TN45E, TS40W) ARE EXPRESSED IN TERMS OF TRUE NORTH.

NOTE 2: MAP GRID IS REFERRED TO 1000 METER UNIVERSAL TRANSVERSE MERCATOR GRID, 1:50,000 MAP SHEET 116 5/1 (ENGINEER SCALE). COORDINATES AND ELEVATION OF SURVEY ORIGIN POINT (MOSQUITO) WERE PICKED TOPOGRAPHICALLY AND ARE ACCURATE WITHIN APPROXIMATELY 350 METERS HORIZONTALLY AND 710 METERS VERTICALLY. GRID NORTH WAS DETERMINED BY MEANS OF MULTIPLE COMPASS SIGHTINGS AND IS ACCURATE WITHIN APPROXIMATELY ± 30 MINUTES.

Milchem
HOUSTON TEXAS

KAREN CLAIMS EXPLORATION PROJECT
DAWSON MINING DISTRICT, YUKON
OUTCROP & DRILL HOLE TRACES

SCALE 1/100	APPR. B.Y.T.	DATE
DRAWN R.E. COLE	DATE AUGUST 15, 80	CHRD.
DRAWING NO.	SHEET	OF
	1	2

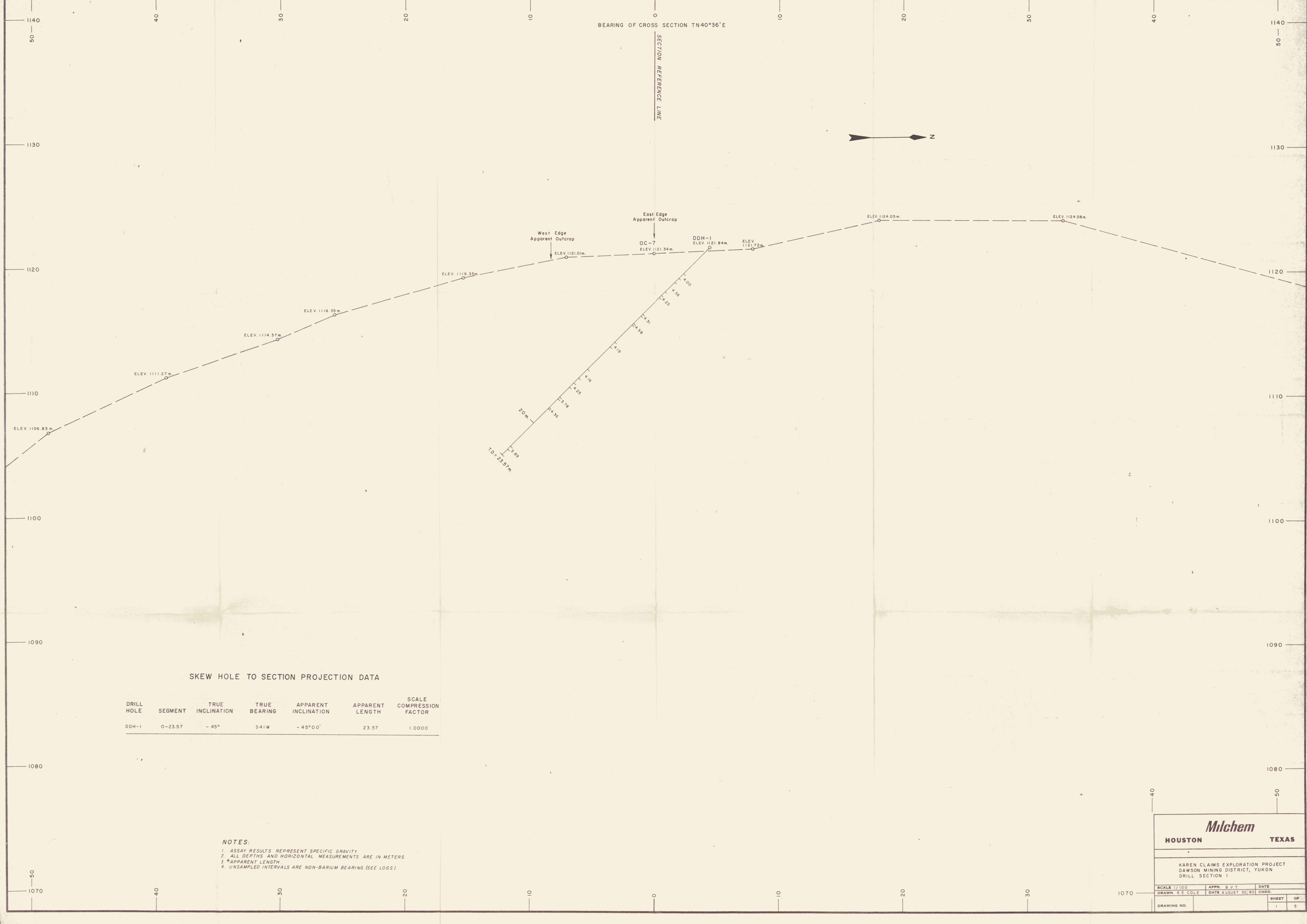
To KAREN 3, POST #2
ELEV. 993.82m
346.80m from KAREN 4 POST #1
S 102° 26' 10" W (108° 32' 42" W)

To KAREN 3, POST #2
ELEV. 993.45m
317.00m from KAREN 3 POST #1
S 48° 04' 10" W (108° 49' 35" W)

To KAREN 2, POST #2
ELEV. 1119.19m
347.40m from KAREN 1 POST #1
S 62° 42' 09" E (102° 50' 02" E)

To KAREN 2, POST #2
ELEV. 1119.19m
328.20m from KAREN 4 POST #1
S 69° 22' 52" E (105° 47' 32" E)

To KAREN 1, POST #2
ELEV. 1116.84m
352.80m from KAREN 1 POST #1
S 69° 22' 52" E (105° 47' 32" E)



SKREW HOLE TO SECTION PROJECTION DATA

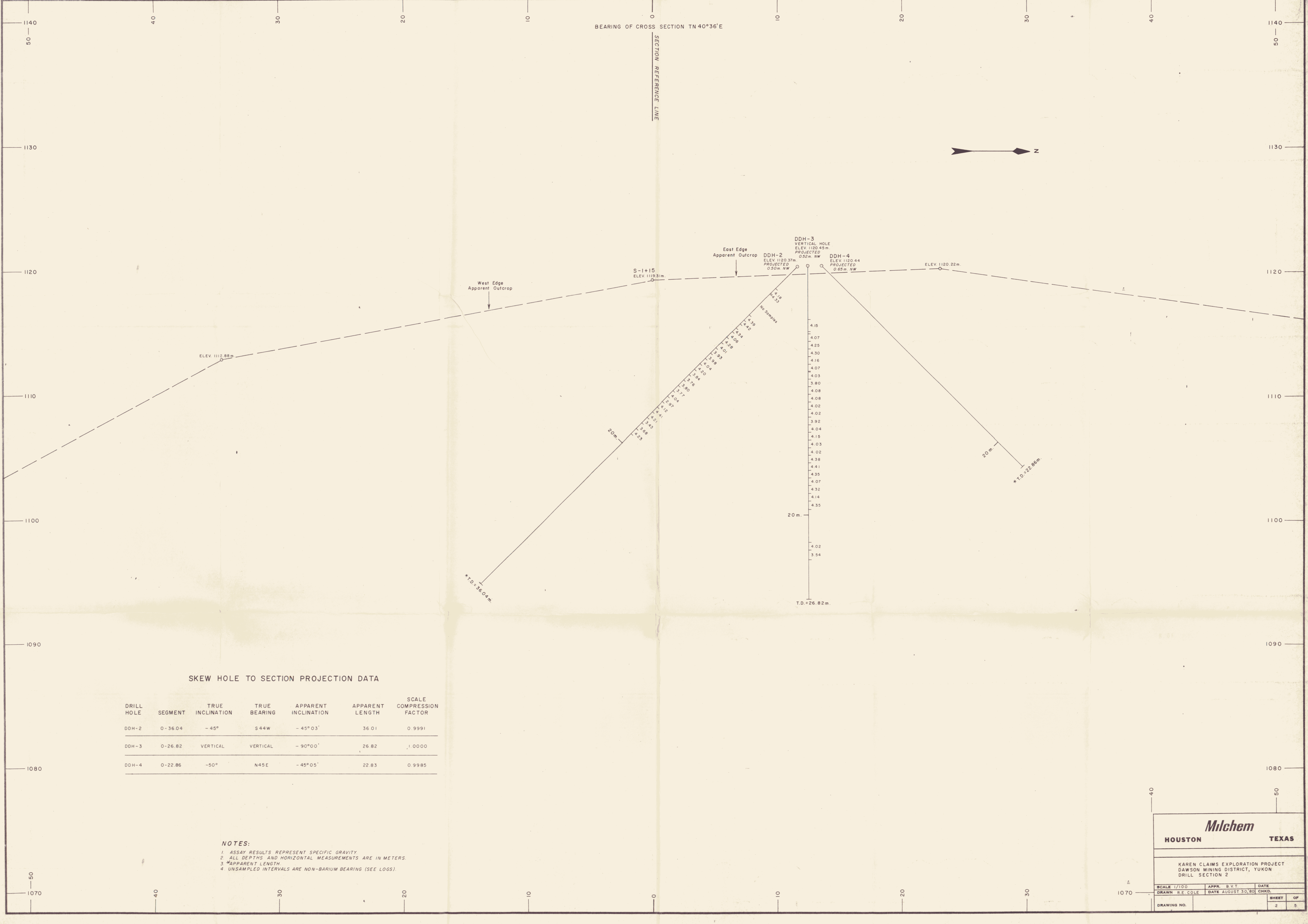
DRILL HOLE	SEGMENT	TRUE INCLINATION	TRUE BEARING	APPARENT INCLINATION	APPARENT LENGTH	SCALE COMPRESSION FACTOR
DDH-1	0-23.57	-45°	S41W	-45°00'	23.57	1.0000

NOTES:
 1. ASSAY RESULTS REPRESENT SPECIFIC GRAVITY.
 2. ALL DEPTHS AND HORIZONTAL MEASUREMENTS ARE IN METERS.
 3. *APPARENT LENGTH.
 4. UNSAMPLED INTERVALS ARE NON-BARIUM BEARING (SEE LOGS).

Milchem
HOUSTON TEXAS

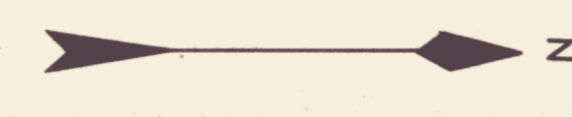
KAREN CLAIMS EXPLORATION PROJECT
DAWSON MINING DISTRICT, YUKON
DRILL SECTION I

SCALE 1/100	APPR. S.V.T.	DATE
DRAWN R.E. COLE	DATE AUGUST 30, 80	CHKD.
DRAWING NO.		SHEET OF
		1 5



BEARING OF CROSS SECTION TN 40°36'E

SECTION REFERENCE LINE



SKREW HOLE TO SECTION PROJECTION DATA

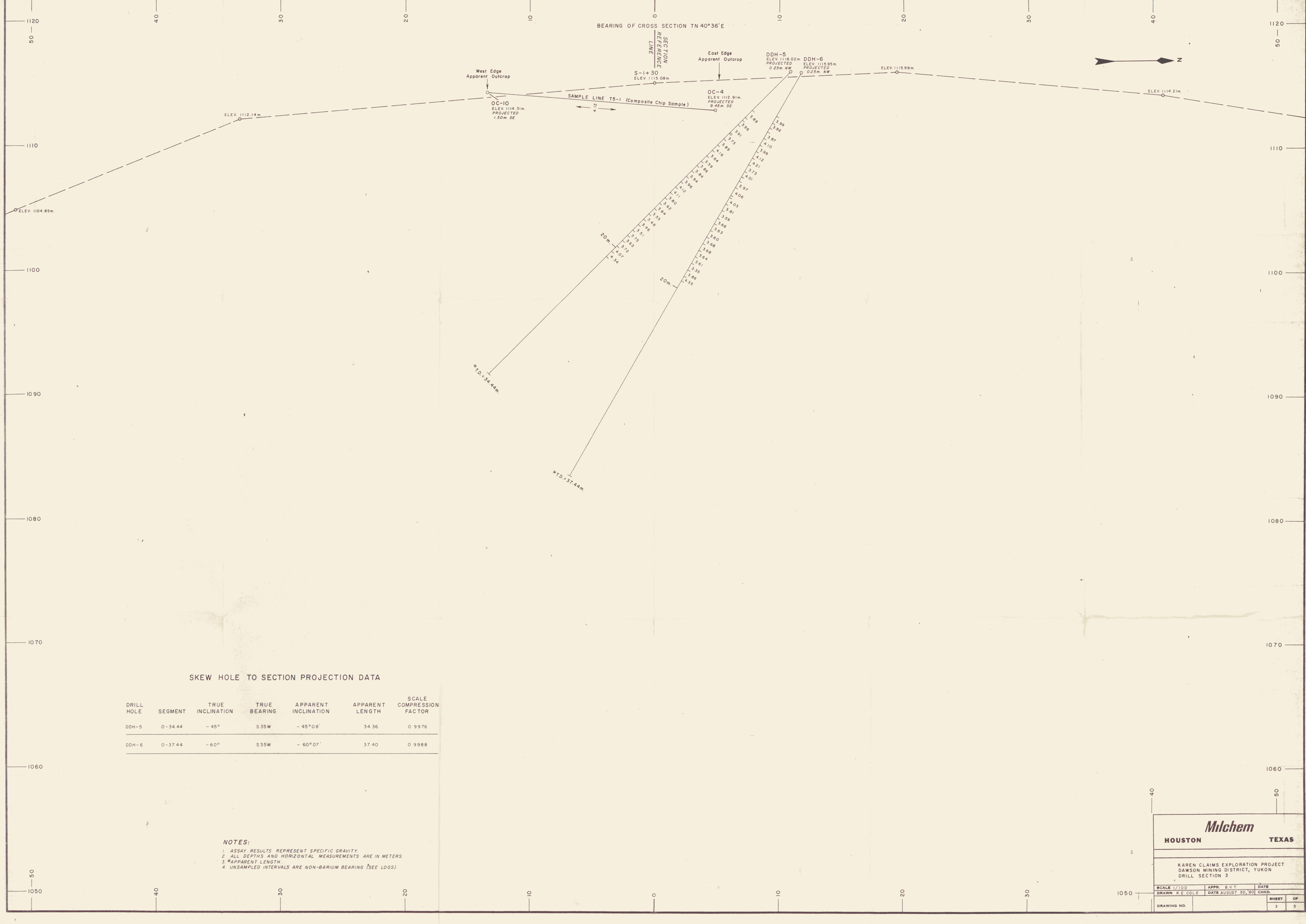
DRILL HOLE	SEGMENT	TRUE INCLINATION	TRUE BEARING	APPARENT INCLINATION	APPARENT LENGTH	SCALE COMPRESSION FACTOR
DDH-2	0-36.04	-45°	S 44 W	-45° 03'	36.01	0.9991
DDH-3	0-26.82	VERTICAL	VERTICAL	-90° 00'	26.82	1.0000
DDH-4	0-22.86	-50°	N 45 E	-45° 05'	22.83	0.9985

- NOTES:
1. ASSAY RESULTS REPRESENT SPECIFIC GRAVITY
 2. ALL DEPTHS AND HORIZONTAL MEASUREMENTS ARE IN METERS.
 3. *APPARENT LENGTH.
 4. UNSAMPLED INTERVALS ARE NON-BARIUM BEARING (SEE LOGS).

Milchem
HOUSTON TEXAS

KAREN CLAIMS EXPLORATION PROJECT
DAWSON MINING DISTRICT, YUKON
DRILL SECTION 2

SCALE 1/100	APPR. B.V.T.	DATE
DRAWN R.E. COLE	DATE AUGUST 30, 80	CHKD.
DRAWING NO.	SHEET 2	OF 5



BEARING OF CROSS SECTION TN 40°36'E

SECTION REFERENCE LINE

East Edge Apparent Outcrop

West Edge Apparent Outcrop

DDH-5
ELEV 1116.02m
PROJECTED 0.23m NW

DDH-6
ELEV 1115.95m
PROJECTED 0.25m NW

ELEV 1115.99m

ELEV 1114.21m

ELEV 1112.14m

OC-10
ELEV 1114.31m
PROJECTED 1.50m SE

OC-4
ELEV 1112.91m
PROJECTED 9.45m SE

SAMPLE LINE T5-1 (Composite Chip Sample)

20m

20m

*TD=34.44m

*TD=37.44m

SKREW HOLE TO SECTION PROJECTION DATA

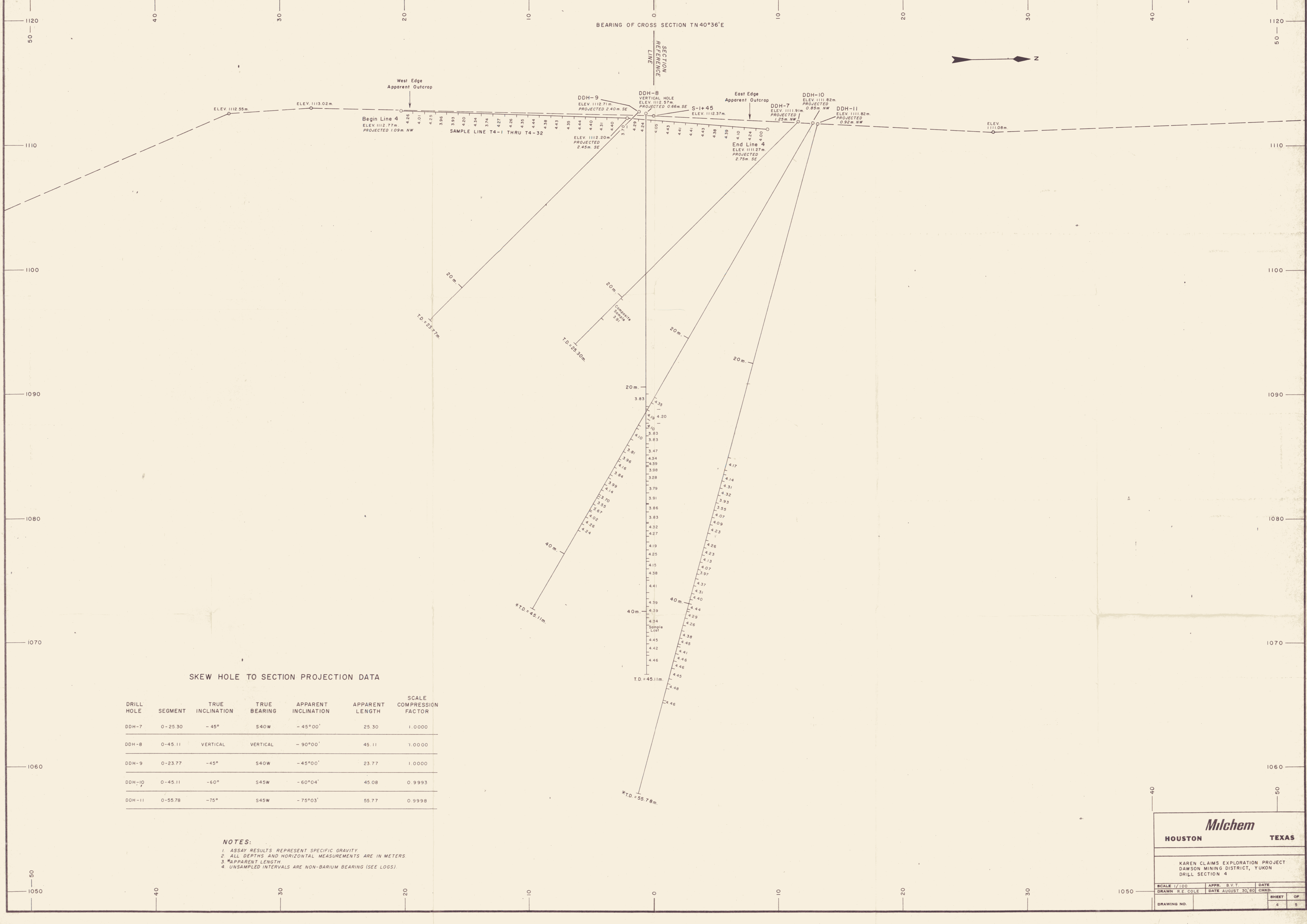
DRILL HOLE	SEGMENT	TRUE INCLINATION	TRUE BEARING	APPARENT INCLINATION	APPARENT LENGTH	SCALE COMPRESSION FACTOR
DDH-5	0-34.44	-45°	S 35 W	-45°08'	34.36	0.9976
DDH-6	0-37.44	-60°	S 35 W	-60°07'	37.40	0.9988

NOTES:
 1. ASSAY RESULTS REPRESENT SPECIFIC GRAVITY.
 2. ALL DEPTHS AND HORIZONTAL MEASUREMENTS ARE IN METERS.
 3. *APPARENT LENGTH.
 4. UNSAMPLED INTERVALS ARE NON-BARIUM BEARING (SEE LOGS).

Milchem
HOUSTON TEXAS

KAREN CLAIMS EXPLORATION PROJECT
DAWSON MINING DISTRICT, YUKON
DRILL SECTION 3

SCALE 1/100	APPR. B.V.T.	DATE
DRAWN R.E. COLE	DATE AUGUST 30, '80	CHKD.
DRAWING NO.		SHEET 3 OF 5



SKREW HOLE TO SECTION PROJECTION DATA

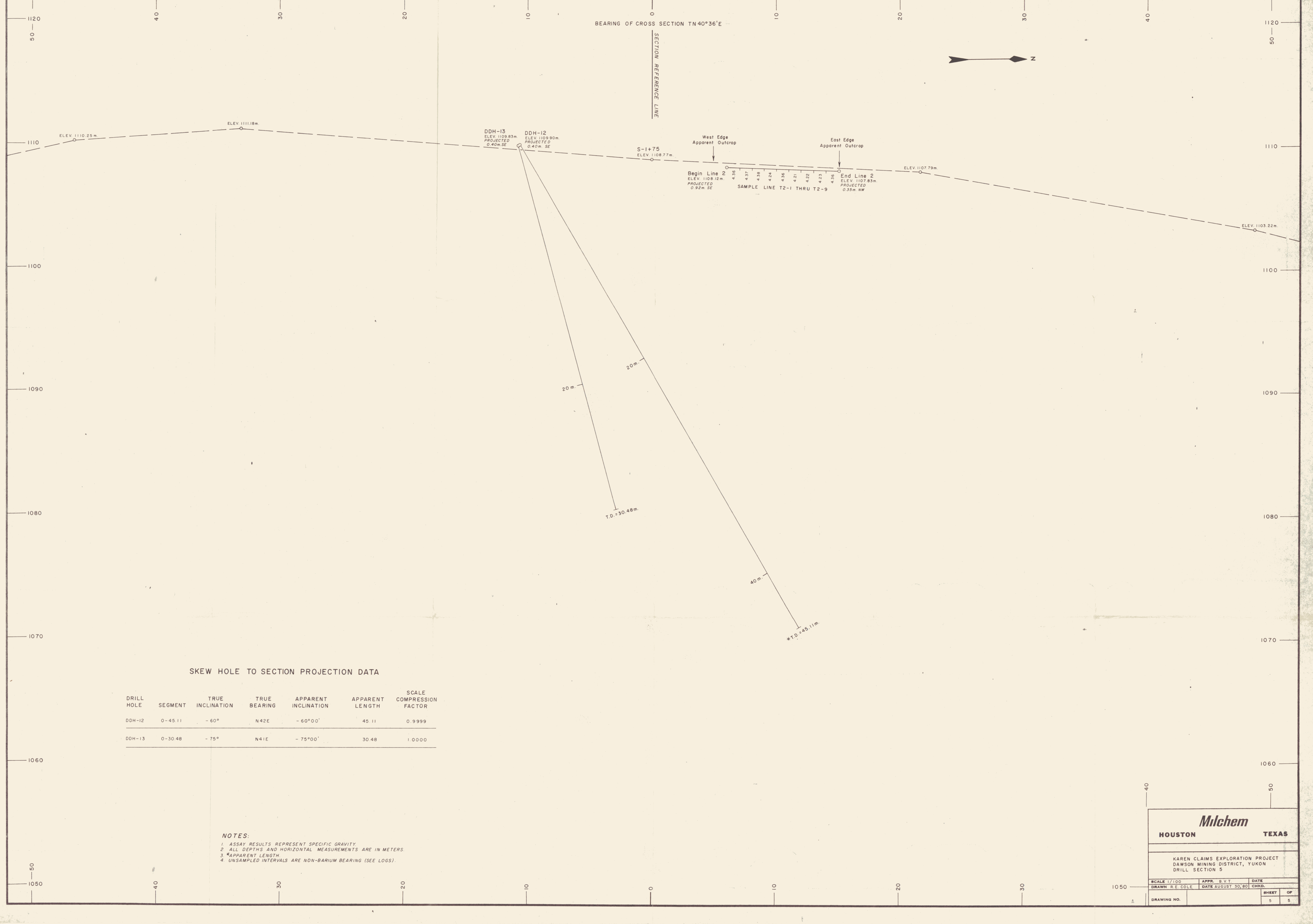
DRILL HOLE	SEGMENT	TRUE INCLINATION	TRUE BEARING	APPARENT INCLINATION	APPARENT LENGTH	SCALE COMPRESSION FACTOR
DDH-7	0-25.30	-45°	S40W	-45°00'	25.30	1.0000
DDH-8	0-45.11	VERTICAL	VERTICAL	-90°00'	45.11	1.0000
DDH-9	0-23.77	-45°	S40W	-45°00'	23.77	1.0000
DDH-10	0-45.11	-60°	S45W	-60°04'	45.08	0.9993
DDH-11	0-55.78	-75°	S45W	-75°03'	55.77	0.9998

NOTES:
 1. ASSAY RESULTS REPRESENT SPECIFIC GRAVITY.
 2. ALL DEPTHS AND HORIZONTAL MEASUREMENTS ARE IN METERS.
 3. *APPARENT LENGTH.
 4. UNSAMPLED INTERVALS ARE NON-BARIUM BEARING (SEE LOGS).

Milchem
HOUSTON TEXAS

KAREN CLAIMS EXPLORATION PROJECT
DAWSON MINING DISTRICT, YUKON
DRILL SECTION 4

SCALE 1/100	APPR. B.V.T.	DATE
DRAWN R.E. COLE	DATE AUGUST 30, 80	CHKD.
DRAWING NO.	SHEET	OF
	4	5



SKEW HOLE TO SECTION PROJECTION DATA

DRILL HOLE	SEGMENT	TRUE INCLINATION	TRUE BEARING	APPARENT INCLINATION	APPARENT LENGTH	SCALE COMPRESSION FACTOR
DDH-12	0-45.11	-60°	N42E	-60°00'	45.11	0.9999
DDH-13	0-30.48	-75°	N41E	-75°00'	30.48	1.0000

NOTES:
 1. ASSAY RESULTS REPRESENT SPECIFIC GRAVITY.
 2. ALL DEPTHS AND HORIZONTAL MEASUREMENTS ARE IN METERS.
 3. *APPARENT LENGTH.
 4. UNSAMPLED INTERVALS ARE NON-BARIUM BEARING (SEE LOGS).

Milchem
 HOUSTON TEXAS

KAREN CLAIMS EXPLORATION PROJECT
 DAWSON MINING DISTRICT, YUKON
 DRILL SECTION 5

SCALE 1/100	APPR. B.V.T.	DATE
DRAWN R.E. COLE	DATE AUGUST 30, 80	CHKD.
DRAWING NO.		SHEET 5 OF 5