

LOCATION OF DRILL CORE

CATHY 3 MINERAL CLAIM



Drill Core for holes number 501-80-1 through 501-80-10 which were drilled between June 30, 1980 and September 1, 1980, are located at Baroid of Canada's Onoway Plant at the following address:

Onoway Plant
P. O. Box 250
Onoway, Alberta, Canada

The Superintendent at the plant is Mr. Tommy Vaughn.

Signed:

Agent for:

BAROID OF CANADA, LTD.

090768

FROM Mining Recorder at MAYO

TO Supervising Mining Recorder at Whitehorse, Y.T.



FOR ACTION ARE:

NEW APPL'N for PLACER LEASE to PROSPECT: Name: _____ Lease No.

RENEWAL APPL'N PLACER LEASE to PROSPECT: Name: _____ Lease No.

AFFIDAVIT of EXPENDITURE on PLACER LEASE. Name _____ Lease No.

ASSIGNMENT of PLACER LEASE No.
From: _____ To: _____

GROUPING APPL'N UNDER SEC. 52(2) PLACER MINING ACT.
Owner _____

DIAMOND DRILL LOGS.
Claims: "CATHY" 3 Claim sheet no. 105-0-7

QUARTZ ASSESSMENT REPORT
Claims: BAROLD OF CANADA LTD. Claim sheet no. _____

Type of report: _____ Submitted by: _____

Cls. work performed on: _____ \$ Req. for ren. application 6,600.00

[Signature]
Signature

cc: GEOLOGI

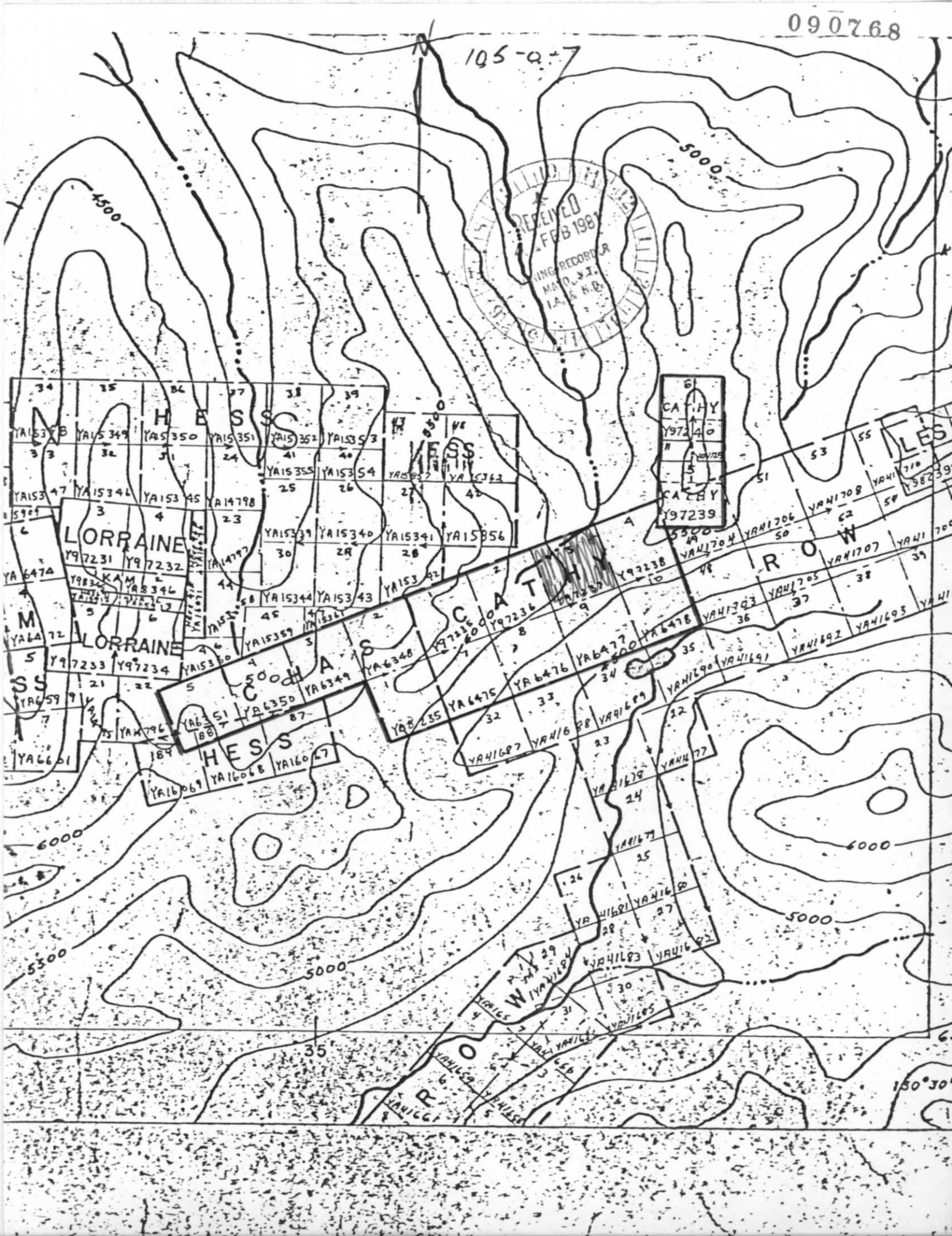
REPLY ACTION.

Date Ret _____

090768

Signature

105-a-7



105-a-7



CATHY
197240
CATHY
197239

Core Rec.	Ore Int.	Bdgn Ang.	Rock Unit	Scale 1"=20'	Description	Assay/Geochem. Data				
						Meters	Sample	S.G.		
438					150.3-153.8 BARITE: gry-blck, alt. shale laminae, calcareous		45.8-46.9	3.85		
				160	153.8-166 BARITE SHALE: alt. lam. of blck shale and gry garite, calcareous	50	46.9-48.3	3.15		
							48.3-48.6	3.99		
							48.6-50.6	3.78		
				180						
				200						
				220						
				240						
				260						
				280						
				300						
				320						

NL BAROID
DRILL HOLE LOG

Project: MACMILLAN PASS
 Hole No.: 501-80-2
 Location: Cathy #3 Claim
 Hole Type(s)/Size(s) DDH BQ
 Begun: July 2, 1980
 Completed: July 4, 1980
 Drilling Co.: ARCTIC DIAMOND DRILLING
 Driller: P. OPPERMAN

Northing: 7019695.00 N
 Easting: 422537.74 E
 Elevation: 1668.05 Meters.
 Bearing: NA
 Inclination: Vertical
 Total Depth: 246 ft. (74.98 M)
 Logged by: Tom Jenkins

Core Rec.	Ore Int.	Bdgn Ang.	Rock Unit	Scale 1"=20'	Description	Meters	Assay/Geochem. Data			
							Sample	S.G.		
			TALUS	0	0-12 TALUS: li gry barite no sample recovery, casing set	0				
0%										
		48°			12-130.1; BARITE: med-dk gry thinly laminated to massive slightly calcareous					
97%				20			3.66-6	4.24		
							6-8	4.35		
						10	8-10	4.28		
				40			10-12	4.30		
100%							12-14	4.40		
							14-16	4.31		
				60			16-18	4.29		
95%						20	18-20	4.32		
							20-22	4.33		
			BARITE				22-24	4.26		
				80			24-26	4.29		
95%		48°					26-28	4.13		
				100		30	28-30	4.33		
							30-32	4.33		
93%							32-34	4.37		
				120			34-36	4.37		
							36-38	4.37		
95%		51°			130.1-151 CHERT: blk argillaceous		38-39.62	4.29		
			CHERT			40	39.62-42	2.62		
				140			42-44	2.65		
100%				151			44-46.02	2.66		

Core Rec.	Ore Int.	Bdgn Ang.	Rock Unit	Scale 1"=20'	Description	Assay/Geochem. Data				
						Meters	Sample	S.G.		
					151-186; BARITE: med-dk gry thinly laminated to massive					
96%			↑ BARITE ↓			160	46.02-48	4.34		
		40°				50	48-50	4.25		
							50-52	4.35		
							52-54	4.34		
100%		60°				180	54-56	4.32		
			SH		186-190; SHALE: black, carbonaceous, friable		56-56.69 56.69-58	3.86 2.90		
			↑ CHERT ↓		190-216; CHERT: gry-blck argillaceous	60	58-60	2.68		
83%						200	60-62	2.61		
							62-64	2.60		
							64-65.84	2.61		
50%			↑ BARITE ↓		216-236; BARITE: dk gry-blck laminated calcareous	220	65.84-68	3.58		
						70	68-70	3.21		
75%			↑ SH ↓		236-246; SHALE: blk carbonaceous	240	70-72	3.64		
21%					BTM @ 246 ft (74.98 M)		72-74.98	2.74		
					Hole bottomed due to loss of circulation and caving.	260				
						80				
						280				
						300				
						320				

NL BAROID
DRILL HOLE LOG

Project: MACMILLAN PASS
 Hole No.: 501-80-3
 Location: Cathy #3 Claim
 Hole Type(s)/Size(s) DDH BQ
 Begun: July 6, 1980
 Completed: July 9, 1980
 Drilling Co.: ARCTIC DIAMOND DRILLING
 Driller: P. OPPERMAN

Northing: 7019716.07
 Easting: 422513.79
 Elevation: 1685.31
 Bearing: S45W
 Inclination: - 50° (from Horizontal)
 Total Depth: 259 ft. (78.94 M)
 Logged by: Tom Jenkins


Core Rec.	Ore Int.	Bdgn Ang.	Rock Unit	Scale 1"=20'	Description	Meters	Assay/Geochem. Data					
							Sample	S.G.				
0%			T	0	0-4; TALUS: li gry barite no sample recovered, casing set	0						
		35°	BARITE		4-43 BARITE: gry-blck laminated shaly		1.22-2	4.21				
56%								2-4	4.13			
									4-6	4.28		
									6-8	4.31		
									8-9.14	4.15		
98%						10						
							9.14-12	4.13				
					43-62 CHERT: blk, argillaceous		12-13.14	3.90				
87%			CHERT									
							13.14-16	2.66				
					62-81 SHALE: gry-blck, friable		16-18	2.60				
						20						
							18-20	2.61				
75%							20-22	2.66				
		25°	BARITE		81-209.5 BARITE: gry-blck thinly laminated to massive		22-24.69	2.60				
70%									24.69-26	3.16		
							26-28	4.27				
		30°	BARITE			30						
									28-30	4.26		
							30-32	4.32				
82%												
							32-34	4.29				
							34-36	4.26				
		30°	BARITE									
									36-38	4.31		
							38-40	4.34				
82%						40						
							40-42	4.15				
		25°	BARITE									
									42-44	4.35		
90%							44-46	4.36				

NL BAROID
DRILL HOLE LOG

Project: MACMILLAN PASS
 Hole No.: 501-80-4
 Location: Cathy #3 Claim
 Hole Type(s)/Size(s) DDH
 Begun: July 10, 1980
 Completed: July 16, 1980
 Drilling Co.: ARCTIC DIAMOND DRILLING
 Driller: P. OPPERMAN

Northing: 7019717.01
 Easting: 422514.78
 Elevation: 1685.22
 Bearing: NA
 Inclination: Vertical
 Total Depth: 407 ft (124.05 M)
 Logged by: Tom Jenkins

Core Rec.	Ore Int.	Bdgn Ang.	Rock Unit	Scale 1"=20'	Description	Meters	Assay/Geochem. Data				
							Sample	S.G.			
0%			T	0	0-6; TALUS: li gry barite no sample recovered, casing set	0					
85%			↑ BARITE ↓		6-60.7; BARITE: med-dk gry laminated to massive, occasionally argillaceous		1.82-4	4.11			
		32°		20			4-6	4.13			
85%							6-8	4.27			
		40°		10			8-10	4.32			
							10-12	4.33			
						12-13.72	4.14				
93%						13.72-16	4.25				
		55°		60		60.7-80.5; CHERT: blk argillaceous		16-18.5	4.22		
86%							18.5-20	2.63			
				20			20-22	2.59			
			↑ CHERT ↓	80	80.5-217; BARITE: med-dk gry massive to thinly laminated		22-24.5	2.66			
						24.5-26	4.13				
81%		25°				26-28	4.36				
						28-30	4.39				
				100		30	30-32	4.29			
						32-34	4.34				
58%			↑ BARITE ↓				34-36	4.34			
		50°					36-38	4.25			
							38-40	4.35			
						120	40	40-42	4.17		
70%							42-44	4.38			
						140		44-45.4	4.34		

Core Rec.	Ore Int.	Bdgn Ang.	Rock Unit	Scale 1"=20'	Description	Assay/Geochem. Data			
						Meters	Sample	S.G.	
				320	310.5-347.9; BARITE: dk gry-blck laminated				
74%		33°	↑ BARITE			100	98-100	4.18	
							100-102	4.23	
				340			102-104	4.01	
					347.9-349.6; CHERT: blk argillaceous		104-106	3.86	
85%			↓ B C		349.6-352; BARITE: dk gry-blck laminated		106-03-106-07	2.69	
							106-67-107-69	3.74	
			↑ CHERT		352-384.2; CHERT: blk argillaceous				
		63°		360		110	107.29-110	2.61	
95%							110-112	2.65	
							112-114	2.65	
				380	384.2-384.6; BARITE: dk gry stringers		114-116	2.61	
			↓ CH		384.6-393.7; CHERT: blk, argillaceous		116-117-09	2.62	
							117-09-117.2	3.88	
91%			↓ C B		393.7-395; CHERT: with barite stringers		117.2-120	2.82	
		56°			395-407; CHERT: blk argillaceous	120	120-120.4	3.79	
			↑ CH				120.4-122	2.76	
		64°					122-124.05	2.66	
			↓		BTM @ 407 ft (124.05 M)				
				420					
						130			
				440					
				460		140			
				480					

NL BAROID
DRILL HOLE LOG

Project: MACMILLAN PASS
 Hole No.: 501-80-5
 Location: Cathy #3 Claim
 Hole Type(s)/Size(s): DDH BQ
 Begun: July 18, 1980
 Completed: July 23, 1980
 Drilling Co.: ARCTIC DIAMOND DRILLING
 Driller: P. OPPERMAN

Northing: 7019737.87 N
 Easting: 422495.10 E
 Elevation: 1671.87
 Bearing: S45°W
 Inclination: -53° (from horizontal)
 Total Depth: 272 ft (82.91 M)
 Logged by: Tom Jenkins

Core Rec.	Ore Int.	Bdgn Ang.	Rock Unit	Scale 1"=20'	Description	Assay/Geochem. Data				
						Meters	Sample	S.G.		
				0	0-7; TALUS: li gry barite no recovery, casing set	0				
0%			Talus							
				7-47	7-47; BARITE: med-dk gry thinly laminated		2.13-4	4.00		
100%			BARITE	20			4-6	3.96		
				6-8				4.11		
89%				8-10		10		4.18		
				10-12				4.12		
				47-51.5	47-51.5; ARGILLITE: dk gry		12-14	3.34		
86%			A				14-33	2.72		
				51.5-112.7	51.5-112.7; BARITE: dk gry-blck thinly laminated		15.7-18	4.32		
			BARITE	60		20		4.32		
		0°		18-20				4.32		
92%				20-22				4.33		
				22-24				4.30		
				24-26				4.18		
62%		0°	BARITE	26-28				4.37		
				28-30		30		4.37		
		22°		30-32				4.37		
64%				32-34	112.7-135.9; BARITE-CHERT: gry-blck interbedded		32-34	3.35		
			BARITE				34-35	2.71		
			CHERT				35-46	4.16		
				37-38			37-38	2.98		
72%				38-40		40		4.30		
				40-41			40-41	2.63		
				41-42			41-42	3.07		
				135.9-182	135.9-182; SHALE: blk, carbonaceous		41-43	2.85		
55%			SH				44-46	2.66		

Core Rec.	Ore Int.	Bdgn Ang.	Rock Unit	Scale 1"=20'	Description	Meters	Assay/Geochem. Data			
							Sample	S.G.		
74%			SHALE	160		50	46-48	2.84		
							48-50	2.70		
							50-52	2.70		
							52-54	2.73		
84%				180	182-223.2 BARITE: blk shaly, interlam- inations of shale.		54-55.47	2.86		
							55.47-58.52	3.61		
						60	58.52-60	4.07		
100%		40°	BARITE	200			60-62	4.14		
							62-63.25	3.99		
							63.25-64.77	3.98		
							64.77-66	4.17		
100%		32°		220	223.2-250 SHALE: blk, carbonaceous		66-66.46	4.10		
							66.46-68.03	3.94		
						70	68.03-70	2.97		
			SHALE	240			70-72	2.76		
86%							72-74	2.63		
					250-256.3 BARITE: gry-blk shaly		74-76.2	2.70		
			BA				76.2-76.97	4.01		
							76.97-78.12	3.56		
75%			SHALE CHERT	260	256.3-272 CHERT-SHALE: blk carbonaceous with minor barite clasts		78.12-79.92	2.96		
						80	79.92-82.9	2.66		
					BTM @ 272 ft (82.91 M)					
				280						
				300						
				320						

NL BAROID
DRILL HOLE LOG

Project: MACMILLAN PASS
 Hole No.: 501-80-6
 Location: Cathy #3 Claim
 Hole Type(s)/Size(s) DDH BQ
 Begun: July 24, 1980
 Completed: July 27, 1980
 Drilling Co.: ARCTIC DIAMOND DRILLING
 Driller: P. OPPERMAN

Northing: 7019738.79 N
 Easting: 422495.97 E
 Elevation: 1671.75 Meters.
 Bearing: NA
 Inclination: Vertical
 Total Depth: 292 ft.
 Logged by: Tom Jenkins

Core Rec.	Ore Int.	Bdgn Ang.	Rock Unit	Scale 1"=20'	Description	Meters	Assay/Geochem. Data			
							Sample	S.G.		
				0	0-8 TALUS: li gry barite, no sample recovered, casing set	0				
0%										
		45°					2.44-4	4.05		
83%				20	8-170.6; BARITE: dk gry-blck thinly laminated		4-6	4.19		
							6-8	4.00		
87%						10	8-10	4.01		
		42°		40			10-12	4.08		
							12-14	4.18		
83%							14-16	4.30		
		42°		60			16-18	4.34		
						20	18-20	4.05		
100%		39°					20-22	4.36		
							22-24	4.35		
				80			24-26	4.31		
							26-28	4.09		
92%						30	28-30	4.31		
		50°		100			30-32	4.32		
							32-34	4.32		
90%				120			34-36	4.32		
							36-38	4.33		
						40	38-40	4.32		
93%				140			40-42	4.19		
		45°					42-44	4.24		
88%							44-46	4.38		

NL BAROID
DRILL HOLE LOG

Project: MACMILLAN PASS
 Hole No.: 501-80-7
 Location: Cathy #3 Claim
 Hole Type(s)/Size(s) DDH NO
 Begun: August 2, 1980
 Completed: August 5, 1980
 Drilling Co.: ARCTIC DIAMOND DRILLING
 Driller: P. OPPERMAN

Northing: 7019759.19
 Easting: 422516.75
 Elevation: 1661.79 Meters
 Bearing: NA
 Inclination: Vertical
 Total Depth: 342 Feet (104.24 M)
 Logged by: Ray Dickerson

Core Rec.	Ore Int.	Bdgn Ang.	Rock Unit	Scale 1"=20'	Description	Meters	Assay/Geochem. Data				
							Sample	S.G.			
0%			NSQ	0	0-6; BARITE; no sample recovery, set casing	0					
82%		35°	↑ BARITE ↓				1.8-4	4.36			
								4-6	4.37		
					20	6-286.5; BARITE: li-dk gry laminated to massive varieties; occasional lower grade sections have high content of inter-laminated blk shale		6-8	4.34		
95%		50°					10	8-10	3.96		
					40	6-98.5 well laminated alt dk shale and barite		10-12	4.03		
100%		69°						12-14	3.91		
								14-16	3.52		
					60			16-18	3.83		
98%		60°					20	18-20	3.97		
								20-22	3.80		
					80			22-24	3.58		
								24-26	3.59		
100%		60°						26-28	3.60		
					100	98.5-286.5 li gry massive to thinly laminated barite	30	28-30	3.99		
95%		62°					30-32	4.27			
							32-34	4.40			
				120			34-36	4.32			
							36-38	4.36			
90%		70°				40	38-40	4.21			
							40-42	4.13			
				140			42-44	4.13			
91%		65°					44-46.8	4.30			

Core Rec.	Ore Int.	Bdgn Ang.	Rock Unit	Scale 1"=20'	Description	Meters	Assay/Geochem. Data			
							Sample	S.G.		
			BA		153.5-154.5; BARITE SHALE: blk carbonaceous		46.8-47.1	3.91		
85%		55°					47.1-48	4.34		
				160	154.5-267.5; BARITE: li-med gry massive to thinly laminated	50	48-50	4.35		
							50-52	4.36		
71%		58°		180			52-54	4.31		
							54-56	4.35		
100%							56-58	4.31		
		55°		200		60	58-60	4.34		
							60-62	4.36		
100%							62-64	4.26		
		60°		220			64-66	4.33		
							66-68	4.31		
100%						70	68-70	4.29		
							70-72	4.30		
		62°		240			72-74	4.22		
							74-76	4.22		
75%							76-78	4.41		
		53°		260		80	78-80	4.42		
					267.5-269; BARITE SHALE: Blk carbonaceous		80-81.5	4.40		
97%		56°			269-286.5 BARITE: li-med gry		81.5-81.9	3.61		
				280	286.5-291; SHALE AND CHERT: Blk carbonaceous		84-86	4.31		
							86-87.3	4.33		
95%		42°	SH CH		291-297.8; BARITE li gry		87.3-88.7	2.92		
			BA		297.8-311.5 SHALE: silicious blk	90	88.7-90.8	4.31		
				300			90.8-92	2.61		
					311.5-324.5 SHALE AND BARITE: alt. blk shale and dk gry barite laminae highly calcareous		92-94.9	2.72		
100%		62°	SH BA				94.9-97	3.20		
				320			97-98.9	3.10		

Core Rec.	Ore Int.	Bdgn Ang.	Rock Unit	Scale 1"=20'	Description	Meters	Assay/Geochem. Data				
							Sample	S.G.			
988		55°		320	324.5-325.8 BARITE: li-med gry						
						325.8-342 SHALE: dk gry-blck carbonaceous	98.9-99.3	4.05			
							99.3-102	2.72			
		43°		340	BTM @ 342 ft (104.24 M)	102-104.2	2.65				
				360		110					
				380							
				400		120					
				420							
				440		130					
				460		140					
				480							

NL BAROID
DRILL HOLE LOG

Project: MACMILLAN PASS
 Hole No.: 501-80-8
 Location: Cathy #3 Claim
 Hole Type(s)/Size(s) DDH NO BQ
 Begun: August 7, 1980
 Completed: August 12, 1980
 Drilling Co.: ARCTIC DIAMOND DRILLING
 Driller: P. OPPERMAN

Northing: 7019719.51
 Easting: 422494.43
 Elevation: 1650.09 Meters
 Bearing: NA
 Inclination: vertical
 Total Depth: 401 feet
 Logged by: Ray Dickerson

Core Rec. %	Ore Int.	Bdgn Ang.	Rock Unit	Scale 1"=20'	Description	Meters	Assay/Geochem. Data			
							Sample	S.G.		
				0	0-6; No Sample Recovery	0				
90		62°	CHERT		6-85; CHERT: blk carbonaceous blocky		Not Sampled			
8				20						
		43°								
100				40						
		50°								
75				60						
		58°								
70				80						
		68°								
62				100						
		77°	SHALE		85-111.2; SHALE: blk-dk gry carbonaceous					
100				100		111.2-151.5 BARITE: li-med gry laminated with alt blk shale laminae	30	30-32	2.60	
		62°	BAI							
100				120		121-123.2 SHALE: blk carbonaceous		32-33.89	2.65	
			SHI							
		57°						33.89-36	4.14	
100			BARITE							
								36-36.88	3.77	
								36.88-37.55	2.92	
								37.55-40	3.97	
								40-42	3.94	
100		51°						42-44	3.94	
							44-46.18	3.96		

Core Rec. %	Ore Int.	Bdgn Ang.	Rock Unit	Scale 1"=20'	Description	Meters	Assay/Geochem. Data			
							Sample	S.G.		
75		65°	SHALE CHERT	151.5-180.9	SHALE and CHERT: dk gry-blck shaly to blocky	50	46.18-47.57	2.96		
							47.57-47.85	4.29		
85		65°	SHALE CHERT	156.2-157.2	BARITE: li-med gry	50	47.85-50	3.31		
							50-52	2.96		
92		48°	BARITE	180.9-232.5	BARITE: li-med gry massive to faintly laminated moderate carbonate content	60	52-54	2.62		
							54-55.14	2.82		
95		40°	BARITE	180.9-232.5	BARITE: li-med gry massive to faintly laminated moderate carbonate content	60	55.14-58	4.31		
							58-60	4.21		
95		48°	BARITE	200		70	60-62	4.37		
							62-64	4.35		
95		40°	BARITE	220		70	64-66	4.36		
							66-68	4.38		
95		48°	CHERT	232.5-286	CHERT: blk carbonaceous blocky	70	68-70	4.38		
							70-70.87	4.29		
100		48°	CHERT	240		80	70.87-74	2.69		
							74-76	2.93		
100		58°	CHERT	260		80	76-78	2.66		
							78-80	2.84		
100		42°	CHERT	280		80	80-82	2.67		
							82-84	2.62		
80		62°	BARITE	286-312	BARITE: med-dk gry thinly laminated alt. blk shale laminae	90	84-86	2.57		
							86-87.17	2.66		
72		65°	CH	312-354.5	CHERT: dk gry-blck carbonaceous blocky		87.17-90	4.08		
							90-92	4.01		
			CH	312-354.5	CHERT: dk gry-blck carbonaceous blocky		92-94	3.72		
							94-95.1	3.64		
			CH	312-354.5	CHERT: dk gry-blck carbonaceous blocky		95.1-98	2.66		

NL BAROID
DRILL HOLE LOG

Project: MACMILLAN PASS
 Hole No.: 501-80-9
 Location: Cathy #3 Claim
 Hole Type(s)/Size(s) DDH NQ - BX
 Begun: August 16, 1980
 Completed: August 22, 1980
 Drilling Co.: ARCTIC DIAMOND DRILLING
 Driller: P. OPPERMAN

Northing: 7019719.51
 Easting: 42258.65
 Elevation: 1658.81
 Bearing: NA
 Inclination: Vertical
 Total Depth: 421 ft (128.32 M)
 Logged by: Ray Dickerson

Core Rec.	Ore Int.	Bdgn Ang.	Rock Unit	Scale 1"=20'	Description	Meters	Assay/Geochem. Data			
							Sample	S.G.		
		(from vert.)		0	0-12; OVERBURDEN: subrounded li gry barite and blk shale	0				
5%			OB							
37%				20	12-81.5; SHALE: dk gry-blk friable pourous					
0%		29°	SHALE							
66%				40						
		43°		60						
82%				80	81.5-237.8 BARITE li-med gry massive to laminated					
		43°					20-22	2.55		
100%							22-24.8	2.58		
					81.5-98 laminated barite		24.8-26	3.62		
100%		45°	BARITE				26-28	3.98		
				100			28-30	4.32		
100%					98.-237.8 li gry massive non-calcareous barite		30-32	4.38		
		44°		120			32-34	4.40		
100%							34-36	4.33		
		43°		140			36-38	4.27		
100%							38-40	4.34		
							40-42	4.27		
100%							42-44	4.21		
							44-46	4.27		

NL BAROID
DRILL HOLE LOG

Project: MACMILLAN PASS
 Hole No.: 501-80-10
 Location: Cathy #3 Claim
 Hole Type(s)/Size(s) DDH NO
 Begun: August 26, 1980
 Completed: September 1, 1980
 Drilling Co.: ARCTIC DIAMOND DRILLING
 Driller: P. OPPERMAN

Northing: 7019695.44
 Easting: 422578.10
 Elevation: 1648.99 Meters
 Bearing: NA
 Inclination: Vertical
 Total Depth: 331 feet (100.89 M)
 Logged by: Ray Dickerson

Core Rec.	Ore Int.	Bdgn Ang.	Rock Unit	Scale 1"=20'	Description	Meters	Assay/Goochem. Data			
							Sample	S.G.		
0%				0	0-10.5 OVERBURDEN: blk shale w/minor barite	0				
60%										
100%		40°		20	10.5-170.7 BARITE: li-med gry massive to thinly laminated, very fine grained low carbonate content		3-7.9	4.32		
72%		35°		40		10	7.9-10	4.20		
100%							10-12	4.23		
							12-14	4.42		
100%							14-16	4.42		
		35°		60			16-18	4.41		
100%						20	18-20	4.36		
							20-22	4.35		
100%		63°		80			22-24	4.42		
							24-26	4.44		
100%							26-28	4.44		
		54°		100		30	28-30	4.44		
100%							30-32	4.41		
							32-34	4.39		
100%		52°		120			34-36	4.43		
							36-38	4.42		
100%						40	38-40	4.41		
		42°		140	138-157.3 Similar BARITE, brt increasing blk shale laminae		40-42	4.38		
100%							42-44	4.18		
							44-46	3.99		

Core Rec.	Ore Int.	Bdgn Ang.	Rock Unit	Scale 1"=20'	Description	Meters	Assay/Geochem. Data				
							Sample	S.G.			
100%		37°	BARITE	157.3-170.7	less laminated, massive						
				160	BARITE		50	46-48	4.10		
								48-50	4.43		
0%		36°	CHERT	170.7-331	CHERT dk gry-bkck massive carbonaceous blocky						
82%				180				50-52.1	4.43		
								52.1-54	2.72		
100%				197	trace sphalerite blebs along carbonate seam	60	59.4-60.9				
80%				200							
				220							
100%				240		70					
83%				260							
75%				280		80					
100%		45°		300							
100%				320		90					

Core Rec.	Ore Int.	Bdgn Ang.	Rock Unit	Scale 1"=20'	Description	Meters	Assay/Geochem. Data					
							Sample	S.G.				
100%			CHERT	320								
							100					
						BTM @ 331 ft (100.89 M)						
						340						
						360		110				
						380						
						400		120				
						420						
						130						
				440								
				460		140						
				480								

