

GEOLOGICAL AND GEOCHEMICAL REPORT

ON THE  
MOOSE CLAIM GROUP

WATSON LAKE MINING DISTRICT  
WOLF LAKE AREA, YUKON TERRITORY  
NTS 105 B/8  
(60°25'N, 130°18'W)

FOR

AMAX MINERALS EXPLORATION

BY

C. G. Verley, B.Sc., Geologist

SUPERVISED BY: J. W. Stollery, P.Eng.

CORDILLERAN ENGINEERING  
1418 - 355 Burrard Street  
Vancouver, B.C. V6C 2G8

DECEMBER, 1980

CLAIMS: Moose Mineral Claims. Numbers 1-42 inclusive

LOCATION: 97 air-km (60 air-mi) Northwest of Watson Lake

DATE: August 2 to August 15, 1980

090676



This report has been examined by the Geological Evaluation Unit and is recommended to the Commissioner to be considered as representation work in the amount of

\$ 16,800.00

*[Signature]*

Resident Geologist or  
Resident Mining Engineer

Considered as representation work under  
Section 53 (4) Yukon Quartz Mining Act.

*[Signature]*  
B. R. BAXTER  
Supervising Mining Recorder

*[Signature]*  
Commissioner of Yukon Territory



090678

## TABLE OF CONTENTS

	PAGE
INTRODUCTION .....	3
GEOLOGY .....	6
GEOCHEMISTRY .....	9
SUMMARY AND CONCLUSIONS .....	13

## LIST OF FIGURES

<u>FIGURE 1</u>	Property Location Map .....	1
<u>FIGURE 2</u>	Photo: Moose Property looking NW .....	2
<u>FIGURE 3</u>	Claim Map .....	4
<u>FIGURE 4</u>	Cumulative Frequency Distribution .....	10

## LIST OF TABLES

<u>TABLE I</u>	Statistical Categories - Soil Geochemistry .....	11
<u>TABLE II</u>	Rock Chip Geochemistry .....	12

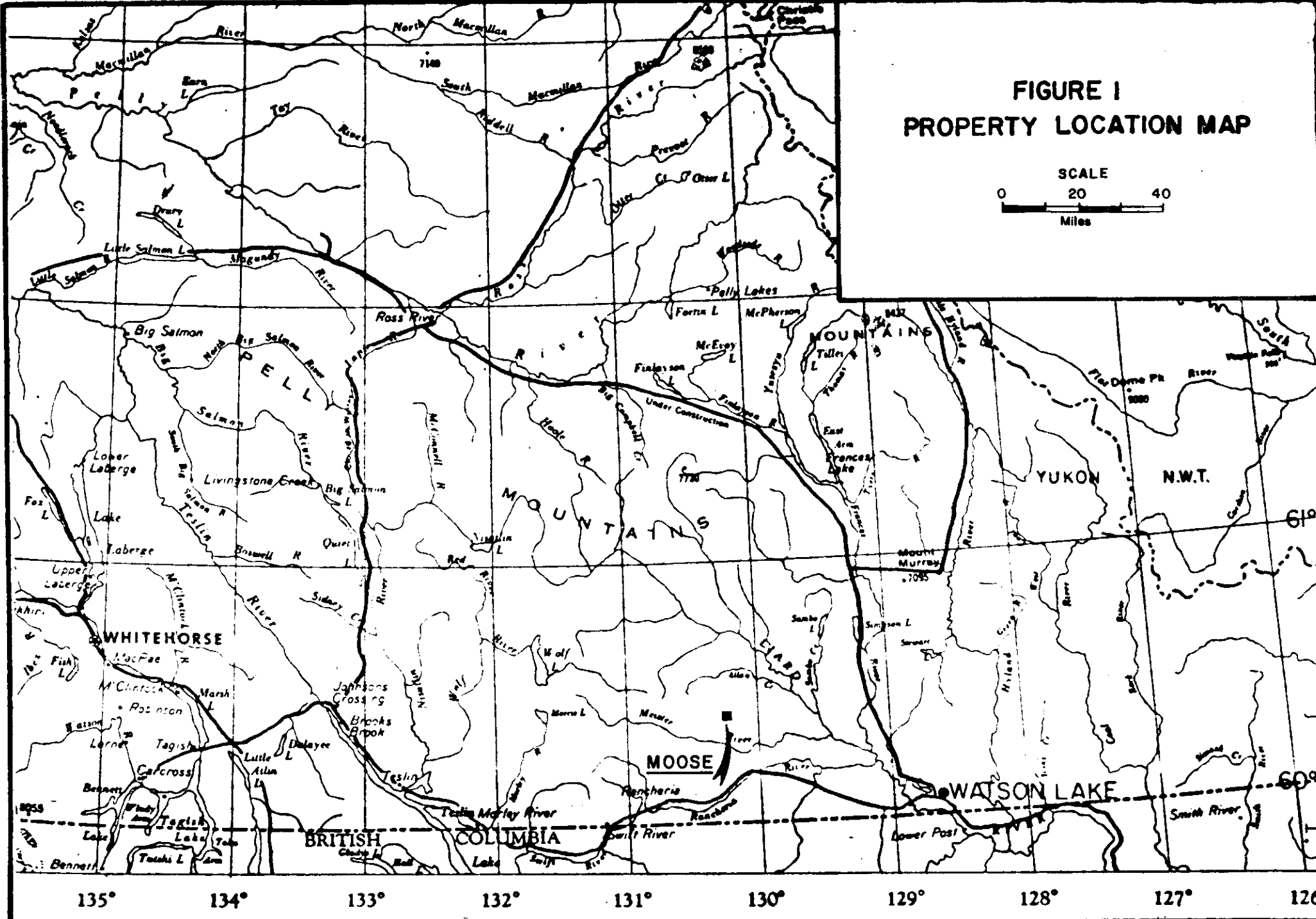
## APPENDICES

<u>APPENDIX "A"</u>	Certificates
<u>APPENDIX "B"</u>	Statutory Declaration
<u>APPENDIX "C"</u>	Personnel

## PLATES

<u>PLATE 1</u>	Geology
<u>PLATE 2</u>	Soil Geochemistry

**FIGURE I  
PROPERTY LOCATION MAP**



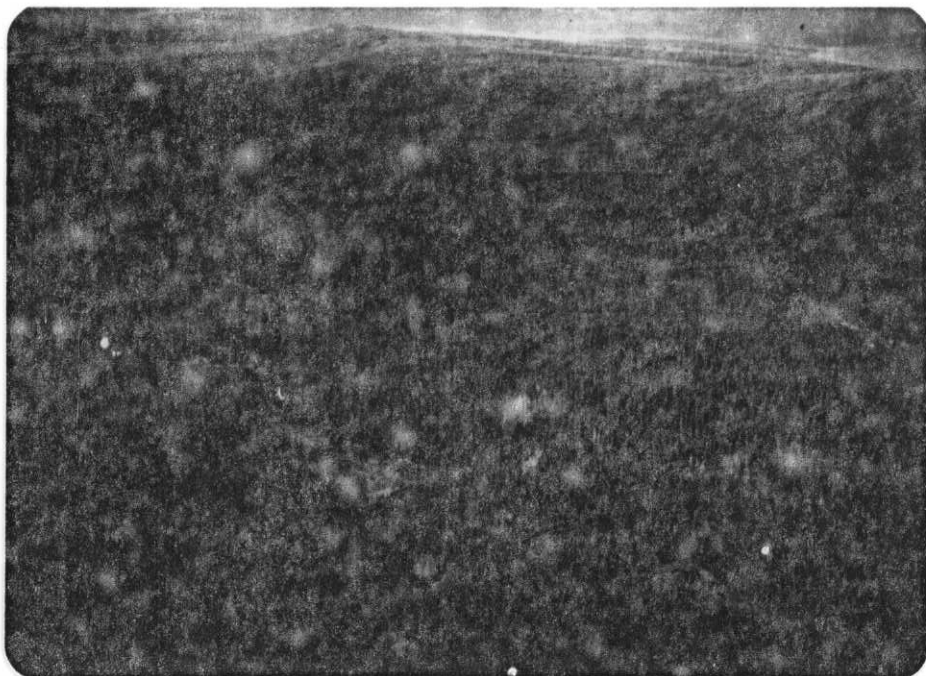


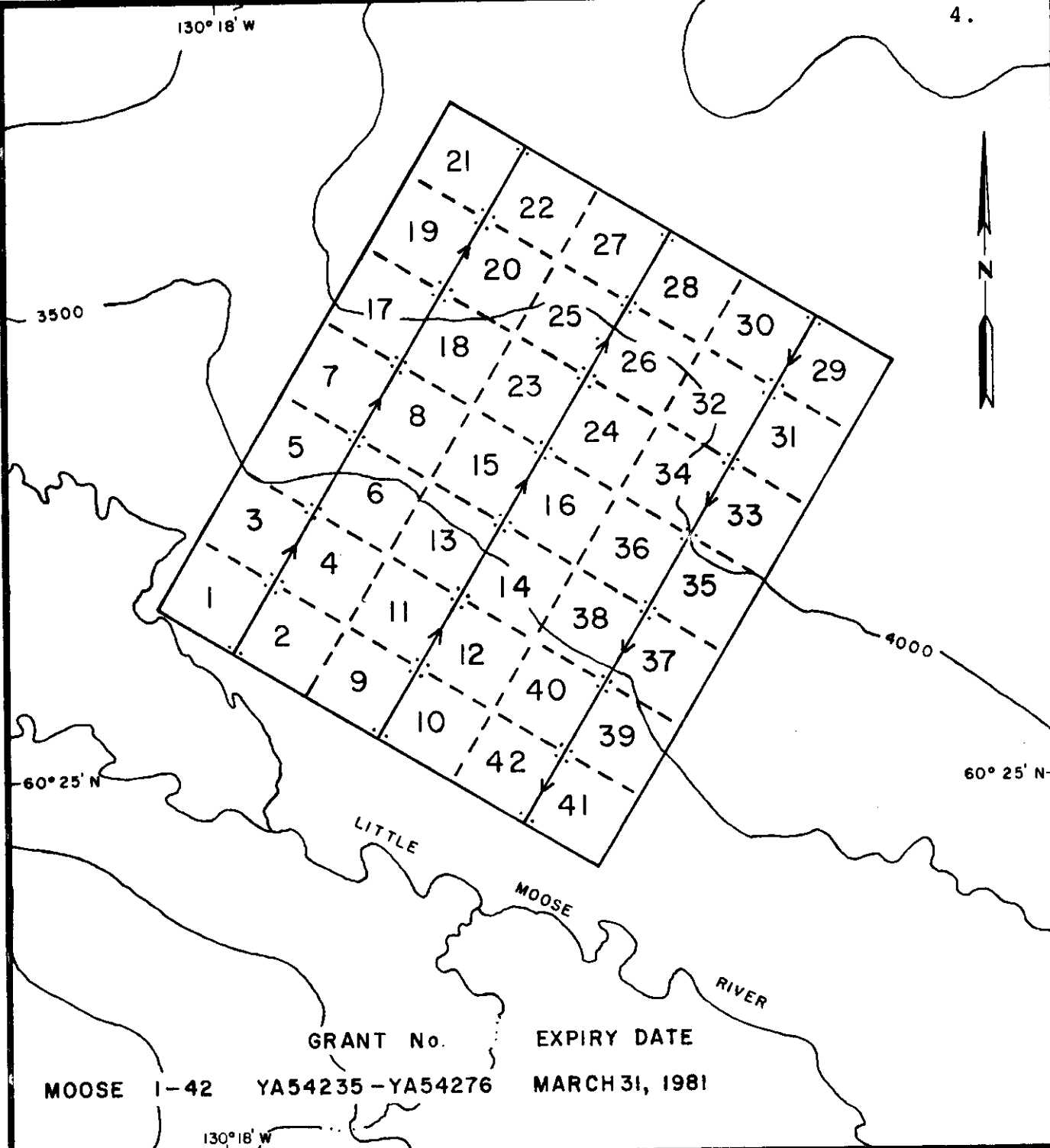
FIGURE 2: Moose Property, looking NW

## I N T R O D U C T I O N

The Moose claim group consists of 42 mineral claims (Figure 3) located 97 kilometres (60 miles) northwest of Watson Lake, in the Watson Lake Mining District (NTS: 105 B/8). The property is accessible by helicopter only.

The Moose was acquired by Cordilleran Engineering for Regional Resources Ltd. in March, 1980 on the basis of anomalous Pb, Zn stream and soil geochemistry as determined from regional work conducted in the area during the 1979 field season. The property is currently under option to AMAX Minerals Exploration.

The claims are underlain by a folded succession of Lower Cambrian and earlier(?) metasediments that are intruded by diabase sills and numerous pegmatite dykes. Work on the property in 1980 consisted of soil sampling and geological mapping.



	GRANT No.	EXPIRY DATE
MOOSE 1-42	YA54235 - YA54276	MARCH 31, 1981

CLAIM MAP

**MOOSE GROUP**

WATSON LAKE MINING DISTRICT, YUKON TERRITORY

N.T.S. 105B - 8

SCALE: 1 inch = 1/2 mile

CONTOUR INTERVAL = 500 feet

FIGURE 3

Results of soil sampling indicate there is a clustering of high and anomalous values in Pb, Zn on and around line 2800W, 1450N to 1800N. Anomalous values in all elements are also found scattered across the grid. Further work on the property should be restricted to evaluating the significance of the strongest soil anomalies.

# G E O L O G Y

## Plate 1)

The Moose is situated, regionally, in a belt of Lower Cambrian and earlier(?) metasedimentary rocks of the Omineca Crystalline Belt, northern Cassiar Mountains. Intrusive rocks of the Cassiar batholith are located approximately 5 kilometres to the south of the property. Exposure on the claims is restricted to linear topographic depressions. Overburden is believed to be relatively thin over most of the property.

Preliminary mapping on the Moose was unsuccessful in subdividing the metasedimentary package. Two intrusive rock types were located on the claims.

## LITHOLOGIES

### LOWER CAMBRIAN AND EARLIER(?)

#### Schist:

This sequence consists predominantly of quartzites and quartz-feldspathic, psammitic rocks which vary in grain size from

from fine sand to pebble conglomerate. Pelitic schists, presumably derived from siltstones and arenaceous siltstones are not uncommon in the section. An exposure of a feldspar porphyroblastic schist near line 2600W, 1300N is the only distinctly mappable unit in the section, but is not traceable over any distance.

#### CRETACEOUS (?)

##### Pegmatite Dykes

Medium-to coarse-grained, quartz-feldspar-muscovite dykes (30 cm to 2 m wide) occur as irregular dykes and sills within the metasediments. Quartz veinlets are locally developed in the metasediments peripheral to some dykes.

#### TERTIARY (?)

##### Diabase Sills

Dark green, fine-grained dense to vesicular porphyritic diabase sills are located in the sequence near 1200W, 1200N. Four sills are exposed at this location and vary from 30 cm to 200 cm in thickness. The enclosing metasediments do not appear to be affected by the dykes.

### STRUCTURE

Metasediments on the Moose appear to be folded into an antiform that plunges south, although this structure is not documented by mappable units. Distinct topographic depressions; trenches or gullies are prominent features on the property and have northerly, northwesterly and easterly trends

These features may reflect fault or shear zones. Pegmatite dykes do not appear to have any preferred structural orientation.

### MINERALIZATION

Galena and possibly sphalerite occurs at two locations on the property. Near line 1000W, 2150N galena is found in quartz veinlets and in sheared, brecciated rock which may represent a fault zone. At 600W, 2000N galena (and sphalerite?) occur on fracture surfaces in an area where manganese staining is intense, but restricted to local, highly fractured areas within the metasediments. An aphanitic, light grey, unfoliated rock occurs in the sequence at this locality and may represent an acid dyke. The width and attitude of this unit was undetermined. A ferricrete kill zone situated at 2400W, 1400N may be the expression of a mineralized pod in a fault zone.

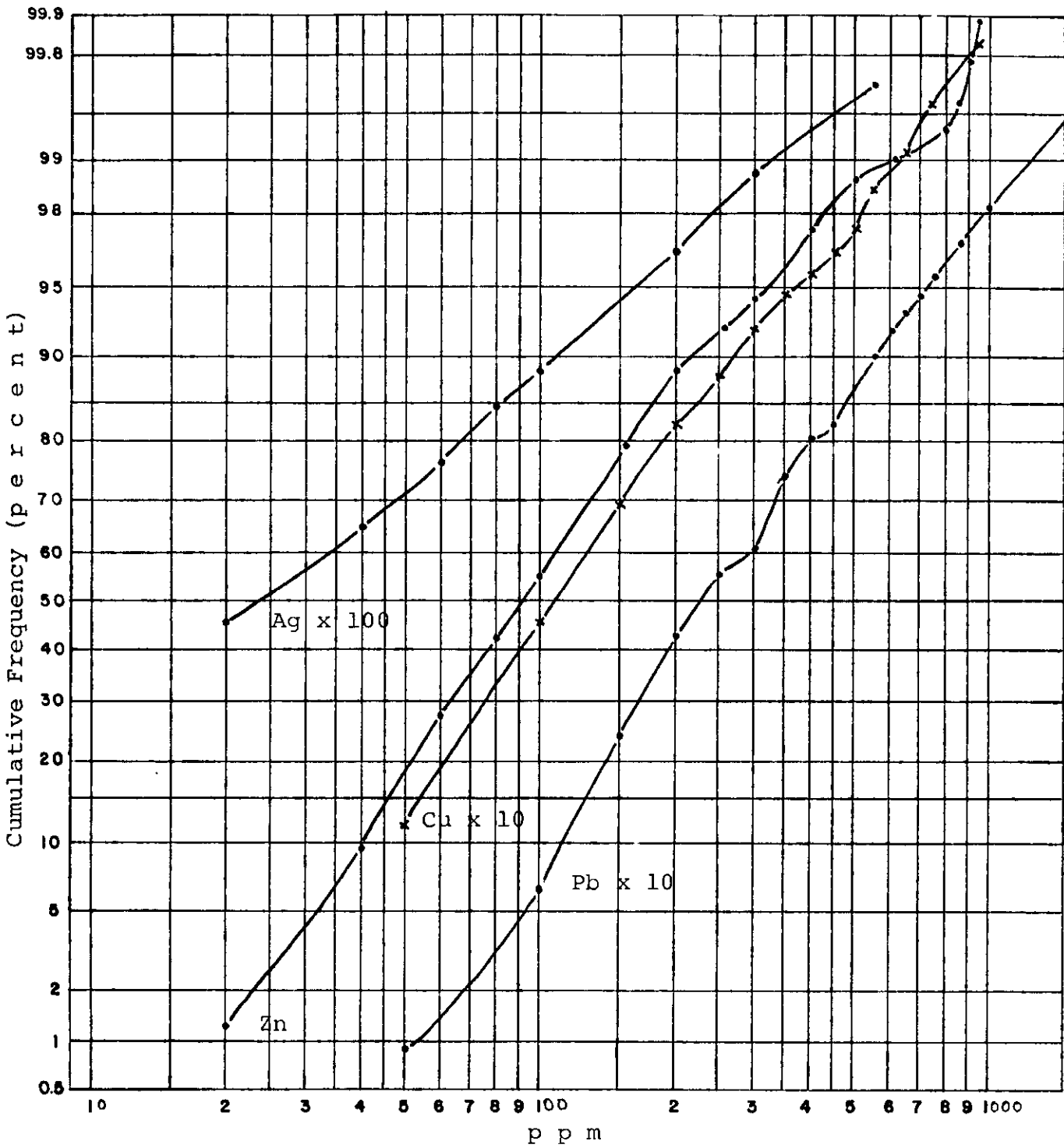
## G E O C H E M I S T R Y

(Plate 2)

A program of soil sampling was conducted on the Moose group. A total of 903 samples were collected (838 on the property) at intervals of 50m on lines spaced 200m apart. Soils on the property consisted of a thin veneer of ablation moraine with local areas of glacial outwash. Line control was by hip-chain and compass.

Samples collected were placed in numbered kraft bags. Sample sites were marked with plastic flagging. The samples were shipped to the North Vancouver laboratory of Bondar-Clegg and Co. Ltd., where they were dried, sieved to the -80 mesh fraction and analyzed for Cu, Pb, Zn, Mo and Ag. The analytical method consisted of perchloric and nitric acid digestion followed by atomic absorption analysis.

Statistical categories (below) are defined such



CUMULATIVE FREQUENCY DISTRIBUTION  
 Cu, Pb, Zn, Ag in soils - MOOSE GROUP  
 100% = 903 samples

FIGURE 4

such that the upper 3% of the values are anomalous. The upper 15% (approximately) are considered to be possibly anomalous.

TABLE I

<u>Statistical Categories - Soil Geochemistry</u>				
	<u>Background</u>	<u>Possibly Anomalous</u>	<u>Anomalous</u>	<u>Maximum Value</u>
Cu	0-24 ppm	25- 47 ppm	$\geq$ 48 ppm	87 ppm
Pb	0-59	60- 84	$\geq$ 85	1400
Zn	0-224	225-379	$\geq$ 380	1860
Mo*	0-3	4	$\geq$ 5	8
Ag	0-0.9	1.0-1.9	$\geq$ 2.0	10.0

\*estimated

Results of the sampling indicate that anomalous values in soils are scattered erratically over the claim group, with the exception of a cluster of high values enclosed by lines 2400W to 3000W, 1450N to 1800N. The locations of some of the anomalous samples appear to coincide with linear gullies, which suggests that an explanation for these types of anomalies may be mineralization in fault zones or veins, similar to that which has been located on the property.

Direct prospecting and profiling is an approach that may provide an explanation for the highest anomalies.

A limited amount of rock chip sampling was carried out to determine background levels in various rock types. Silt samples were collected from streams draining the central part of the property. The results of this work are listed in Table II (locations plotted on Plate 1).

TABLE II

Rock Chip Geochemistry

<u>Sample No.</u>	<u>Cu</u> ppm	<u>Pb</u> ppm	<u>Zn</u> ppm	<u>Ag</u> ppm	<u>Remarks</u>
MR-1	15	20	56	0.2	Pelitic schist
4	31	1850	580	12.0	Gossanous fault zone
5	9	30	27	0.2	Pegmatite
6	23	24	124	0.2	Rusty weathering grit
7	10	8	133	0.2	Altered grit
9	29	10	77	0.2	Pelitic schist
10	23	22	60	0.2	Acid dyke/fault zone
11	29	140	92	0.9	Acid dyke/fault zone
12	136	126	134	0.7	Fractured gossanous grit
13	17	1060	610	1.2	Fractured gossanous grit
14	22	10	80	0.2	Pelitic schist

Stream Sediments:

MS-1	17	48	173	0.6
2	16	42	170	0.4
3	14	34	190	0.5
4	12	40	176	0.5
5	14	30	165	0.6

## S U M M A R Y   &   C O N C L U S I O N S

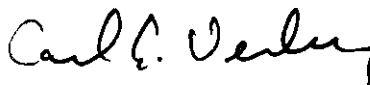
The Moose property consists of 42 mineral claims in the Watson Lake Mining District, Yukon Territory (105 B-8). Access to the claim group is by helicopter, from Watson Lake, a distance of 97 km.

The Moose was acquired in 1980 for Regional Resources by Cordilleran Engineering. It is presently under option to AMAX Minerals Exploration.

Work conducted during the 1980 field season consisted of soil sampling (903 samples) and preliminary geological mapping. Results of this work indicate that soil anomalies exist on the property and these anomalies may partly be explained by mineralization in open space fillings in faults or veins. An area of unexplained, high Pb, Zn geochemistry is situated between lines 2400W to 3000W, stations 1450N to 1800N. Further work is warranted to determine the cause of these anomalies as well as other

anomalous soils.

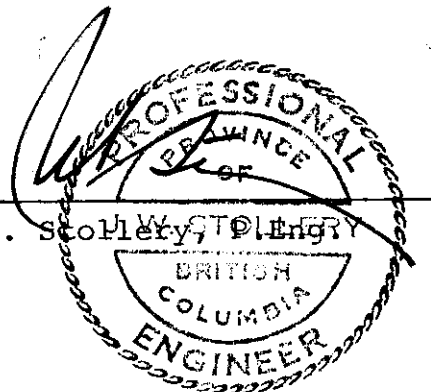
CORDILLERAN ENGINEERING



Carl G. Verley, B.Sc., Geologist

SUPERVISED  
BY:

J. W. Stolery, ~~Stolery~~ P. Eng



CJV/z

December, 1980  
Vancouver, B.C.

## APPENDICES

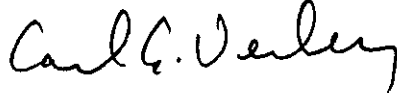
<u>APPENDIX "A"</u>	Certificates
<u>APPENDIX "B"</u>	Statutory Declaration
<u>APPENDIX "C"</u>	Personnel

WRITER'S CERTIFICATE

I, Carl G. Verley of Vancouver, British Columbia  
hereby certify that:

1. I am a geologist residing at 301-1867 West 3rd Ave., and employed by Cordilleran Engineering of 1418-355 Burrard Street, Vancouver, B.C. V6C 2G8
2. I am a graduate of the University of British Columbia, B.S., in 1974, and have practiced my profession since that time.
3. I am an Engineering Pupil with the Association of Professional Engineers of the Province of British Columbia.
4. I am the author of this report which is based on work conducted on the Moose \$1-42 mineral claims during the period August to to August 15, 1980. This work included geological mapping and geochemical sampling, undertaken on behalf of AMAX Minerals Exploration.

CORDILLERAN ENGINEERING

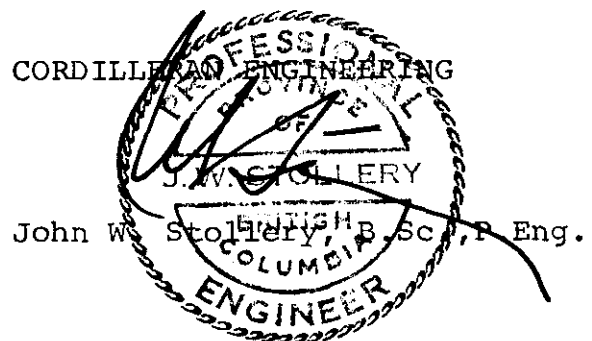
  
Carl G. Verley, B.Sc.,  
Geologist

December, 1980  
Vancouver, B.C.

SUPERVISOR'S CERTIFICATE

I, John W. Stollery of Vancouver, British Columbia hereby certify that:

1. I am a geologist residing at 4423 Patterdale Drive North Vancouver, British Columbia and employed by Cordilleran Engineering of 1418-355 Burrard Street, Vancouver, B.C., V6C 2G8.
2. I am a graduate of the Michigan Technological University, B.S., in 1961 and have practiced my profession since that time.
3. I am a member of the Association of Professional Engineers of the Province of British Columbia and Ontario.
4. I supervised the writing of this report which is based on the results of a field program conducted by Cordilleran Engineering during the period June 1 to September 15, 1980.



December, 1980  
Vancouver, B.C.

CANADA )  
 TO WIT : ) In the matter of a Geological and Geochemical  
 Report on behalf of AMAX Minerals Exploration

I, Carl G. Verley, Agent for Cordilleran Engineering  
 of 1418-355 Burrard Street, Vancouver, B.C. V6C 2G8

do solemnly declare, - that geochemical sampling and geological mapping were conducted on the Moose #1-42 (inclusive) mineral claims, Watson Lake Mining District, Y.T., during the period August 2 to August 15, 1980. Expenditures for this work include:

Salaries, Management Fees and Consulting	\$ 9,106.00
Helicopter	1,906.50
Analyses	4,984.05
Food	466.92
Rentals	<u>625.00</u>
	\$17,088.47

And I make this solemn declaration conscientiously believing it to be true and knowing that it is of the same force and effect as if made under oath and by virtue of the Canada Evidence Act.

Declared before me at Vancouver

in the Province of B.C. this

28 day of November 1980

Anthony J. Marsh  
 A Notary Public in and for the  
 Yukon Territory

Carl G. Verley

PERSONNEL

C. G. Verley, B.Sc. 1418-355 Burrard St. Vancouver, B.C.	Geologist
J. W. Stollery, B.Sc., P.Eng. 1418-355 Burrard St. Vancouver, B.C.	Geological Engineer
K. Brown 1418-355 Burrard St. Vancouver, B.C.	Assistant
D. Miller 1418-355 Burrard St. Vancouver, B.C.	Assistant
P. Power 1418-355 Burrard St. Vancouver, B.C.	Cook
P. Smith 1418-355 Burrard St. Vancouver, B.C.	Assistant



**LEGEND**

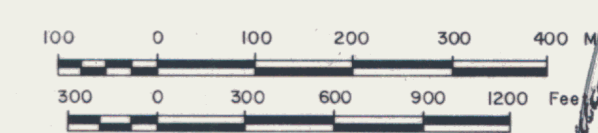
- TERTIARY (?)**
  - DIABASE SILLS**  
DARK GREEN, FINE-GRAINED PORPHYRITIC DIABASE SILLS 30 TO 200 cm THICK
- CRETACEOUS (?)**
  - PEGMATITE DYKES**  
MEDIUM TO COARSE-GRAINED QUARTZ-FELDSPAR-MUSCOVITE DYKES.
- LOWER CAMBRIAN OR EARLIER (?)**
  - SCHIST**  
A MIXED SUCCESSION OF GRITS VARYING FROM PEBBLE CONGLOMERATE TO FINE CLASTICS. PELITIC MEMBERS ARE NOT ABUNDANT.
- LITHOLOGIC CONTACT
- ATTITUDE OF BEDDING
- INFERRED FAULT
- APPROXIMATE OUTCROP DISTRIBUTION
- STREAM SEDIMENT
- TOPOGRAPHIC DEPRESSION
- SWAMP
- x MR-6 **ROCK AND CHIP SAMPLE LOCATION**

MEISTER RIVER JOINT VENTURE  
AMAX MINERALS EXPLORATION

GEOLOGICAL PLAN 090676

MOOSE CLAIM GROUP

WOLF LAKE MAP SHEET, N.T.S. 105 B-8  
WATSON LAKE MINING DISTRICT, YUKON TERRITORY



BY  
CORDILLERAN ENGINEERING  
1418-355 BARRARD STREET  
VANCOUVER, B.C. V6C 2G8



DECEMBER 1980

18 15 87	14 14 62	10 15 31 0.3	27 26 89	24 75 105 2.2	11 17 66	9 31 72 0.3	12 31 75 0.3	18 28 112	6 22 51	9 20 53	6 21 53 0.3	6 20 57	Cu Pb Zn Ag
13 32 152 1.7	16 15 72 0.3	11 22 54	10 16 60	6 14 20	14 21 87 0.4	2 16 44	2 17 39	11 15 50 0.3	N/S 0	7 35 49 0.5	16 33 96 1.7	6 28 52 0.6	9 31 168 0.5
10 32 165 0.8	19 31 94	12 20 65 0.5	N/S 0	12 24 100	20 18 82 0.3	7 29 70	8 27 72	13 19 107	14 25 94	6 16 43 0.5	14 24 98	5 16 49 0.5	12 15 69
8 18 107 0.3	17 24 75	12 26 64	41 23 107 0.3	12 21 65	10 16 70 1.5	10 22 69 0.3	11 22 78 0.4	14 28 97 0.6	26 22 82	12 15 51	24 21 85	10 13 56	12 24 78 1.2
11 24 91 0.6	12 32 30	29 36 50 1.8	12 20 86	6 11 46	16 31 91 0.8	6 42 71 1.0	6 51 83 1.0	10 17 58	8 23 56	13 14 57 0.4	8 23 55	11 13 63 0.3	17 31 91
15 32 173 0.8	19 22 66	10 12 40	9 22 57	13 14 53	16 35 116	3 24 57 0.7	4 26 62 0.6	12 46 123 0.3	10 20 54	8 18 58 0.5	10 19 54	7 15 42 0.5	17 10 71
8 17 97	16 32 190 0.5	17 22 44 0.6	10 14 59 0.5	10 14 54 0.4	7 19 62	6 27 73 0.4	14 37 122 0.4	15 16 96	8 19 30	14 19 57	8 17 31	12 18 62 0.3	26 25 114 0.8
16 18 112	17 24 82	15 56 119 0.7	12 40 104 0.4	14 44 100 0.7	6 22 57	5 27 71	13 31 116 0.5	33 23 77 0.3	10 23 55	7 12 38 0.3	9 12 53	6 12 45	17 16 74
8 14 63	18 49 223 0.3	19 40 129	11 23 85 0.2	13 28 87 0.9	6 19 63 0.3	5 28 60 0.7	11 23 75 0.6	12 18 67	7 21 52	12 17 48 0.6	6 20 51	12 15 54	27 12 35 0.5
11 30 106	18 56 162	20 51 184	16 29 121	14 25 35 0.8	10 36 108 0.3	8 28 87 0.6	10 22 78	52 66 198 2.5	9 16 88	28 20 62 0.5	7 15 84	26 18 62 0.4	28 14 83 0.6
9 32 114	16 28 113	9 25 87 0.4	11 20 60	34 69 155 0.4	9 25 68	14 41 121 0.3	14 35 107	45 46 189 2.7	33 18 73 0.8	8 23 41	30 16 66 0.6	6 20 42	10 12 56
11 98 320	8 30 73	15 17 68	22 28 116	19 35 120	7 42 89 0.3	9 48 100 0.4	20 24 157 0.5	76 17 71 1.9	79 10 64 1.3	16 21 71	65 9 54 0.9	5 18 84	10 12 73
12 60 288	30 34 135 0.3	11 18 60	11 24 72	24 53 290	14 48 127 0.6	39 33 138 2.7	18 32 125 0.4	32 93 185 0.6	14 14 54	10 35 64	13 13 53	10 30 65	15 17 63
13 32 206	18 34 145	26 26 104	9 26 62	6 28 62 0.3	6 38 84 0.6	13 38 120	17 34 152 0.7	47 26 150 2.7	6 16 34	9 18 58	4 15 31	7 16 64	7 16 54
7 48 130 0.3	15 26 105	10 22 76	16 30 80 0.3	35 44 140 0.4	21 66 219 1.7	20 46 156	20 26 124 0.9	34 45 190 2.6	10 14 55	1 15 36	9 12 49	9 13 38	8 18 60
1 30 200 0.4	13 42 130	15 28 104	11 24 63	N/S 0	10 32 85 0.5	15 32 117	23 41 140 1.0	12 33 96 0.3	8 17 64	13 39 93 0.4	7 16 60	N/S 0	9 13 47
8 26 122 0.3	11 22 105	13 25 56 0.4	17 64 92 0.7	14 30 75 0.3	13 24 119	19 32 170	10 18 78	7 38 73 0.3	23 18 200 0.9	26 15 88 0.5	21 17 200 0.6	25 13 70 0.4	14 16 78
10 4 305 0.3	11 38 93 0.5	7 20 48 0.3	19 53 100 1.0	21 23 90	19 38 146 0.4	18 41 146	30 46 174 2.0	9 24 67 0.4	13 19 52	52 57 146 0.5	13 19 54 0.3	48 49 143 0.5	22 19 111 0.3
13 54 375 0.3	13 32 100	21 22 95 0.5	23 45 117 0.9	18 18 50	16 42 160 0.3	16 34 125	11 23 99	14 14 74	11 11 64	14 14 36	11 10 60	12 10 37	30 35 76
22 74 500 4.6	7 26 92	20 85 172	25 74 146 0.3	26 26 106	8 31 71	9 47 120 0.6	16 39 112	N/S 0	17 24 116	14 19 85	15 22 116	13 14 80	10 22 70
50 58 275 2.9	15 54 312 1.5	16 48 95 1.3	13 38 105 0.4	27 59 188 1.4	14 37 120 0.4	13 34 100 0.5	11 30 108	13 36 102	54 14 57 1.8	14 21 85	52 13 56 1.7	12 17 84	14 15 59
11 35 185	13 38 144 0.4	14 46 83 1.1	21 52 118 1.2	10 26 58 0.4	18 32 139 1.3	9 32 83 0.6	15 29 111 0.4	16 80 139 0.4	21 5 11 1.1	29 19 110 0.3	18 5 10 1.0	26 15 114	9 22 123
10 43 185	34 60 222 0.7	58 90 243 3.6	18 52 98 0.7	13 20 88 0.4	8 21 62 0.3	5 28 66 0.3	14 5 23 0.9	87 100 630 3.0	6 18 40	9 18 158	5 18 37	8 13 157	19 15 114
13 28 120	23 58 240 0.4	10 20 65 0.3	16 48 120 0.4	18 35 113	11 28 81 0.6	9 33 99 0.7	10 26 70 0.4	10 26 99 0.6	16 24 47	91 15 104 0.7	14 23 43	86 12 100 0.6	30 14 84
14 60 222 0.4	13 30 90 0.4	33 78 157 1.9	22 82 130 1.4	12 40 92 0.8	8 25 61 0.4	11 36 115 0.7	13 19 86	13 22 170 0.5	6 19 47	9 25 64	6 20 46	8 20 64	64 8 63 0.6
6 30 133 0.4	15 40 133 0.3	6 17 63	7 22 48 0.4	15 30 136 0.8	7 28 75 0.5	11 34 162	7 18 112 0.4	48 43 300 1.0	5 18 40	54 10 45 0.6	5 18 38	35 8 43 0.6	13 11 66
10 42 140 0.4	16 64 172 0.6	23 72 109 1.9	4 37 52 0.4	15 49 98 0.6	13 53 145 0.3	6 34 315	8 16 70 0.4	13 25 114 0.3	9 14 51	16 16 84	9 12 49	15 15 85	10 9 40
11 19 146 0.3	11 30 137 0.6	6 36 43 0.8	14 44 35 0.8	11 48 160	19 70 169 1.5	13 94 129 0.6	11 13 56 0.8	11 34 181 1.2	8 22 93 0.3	44 22 100 0.6	6 18 36	44 18 98 0.6	16 18 82
10 28 92	15 52 160	5 24 54 0.6	7 28 55	23 52 160 0.7	4 38 102 0.9	7 34 122 0.8	8 26 62 0.7	7 15 96 0.4	13 25 123 0.3	35 32 92 0.8	10 21 110 0.3	38 26 90 0.3	14 15 56
8 36 72 0.4	5 71 490 1.1	5 28 53	13 60 55 0.5	12 20 52 0.4	2 13 60	4 32 49 0.5	12 30 95	15 29 200 0.6	39 33 68 4.5	26 38 98 0.4	34 43 59 4.4	25 32 102 0.4	15 16 42 0.3
12 20 185	16 26 221	15 50 132 2.0	33 146 120 2.0	20 44 80 0.8	7 38 139 0.5	16 103 132 0.8	9 13 79 0.6	3 45 145 0.7	6 15 60	55 20 104 1.1	4 11 51	53 17 97 1.1	39 26 83 0.4
11 60 203 0.6	17 56 160	65 220 327 6.8	44 192 259 10.0	9 58 130 0.4	18 36 192 1.0	11 42 192 0.7	8 9 184 0.5	28 17 182 2.6	13 136 980 1.4	52 29 164 1.7	12 117 680 1.2	50 26 153 1.7	9 16 65
21 106 115 1.2	13 47 122 0.4	16 40 155 0.5	19 78 150 1.3	8 26 83 0.3	18 74 200 1.4	7 18 89	10 12 59 0.3	10 16 77	5 13 38 0.3	10 20 167	3 10 32 0.3	8 16 157	14 18 90 0.3
9 57 160 0.5	11 33 110 0.4	16 73 165 1.4	7 20 100 0.3	11 102 120 0.8	N/S 0	10 35 119	27 16 138 1.5	7 16 88	22 95 730 1.8	38 39 126 1.1	21 85 840 1.7	36 31 118 1.0	35 56 140 1.0
8 59 200 0.8	11 60 173 0.5	12 34 105 0.6	10 36 160 0.4	14 34 135 0.5	17 50 245 1.5	10 25 110	59 16 255 3.6	17 24 96 0.4	18 32 345 1.8	9 80 70 0.4	16 26 285 1.7	7 70 70 0.3	20 25 94
36 84 255 2.0	23 66 205 0.9	18 64 135 0.7	21 38 160 0.3	19 56 210 1.0	6 23 102 0.5	5 17 64 0.4	5 24 162	20 26 69 0.5	6 13 43 0.3	12 19 57 0.3	5 12 40	12 16 60	26 33 121 0.9
10 86 154 0.8	17 83 195 5.8	23 74 220 2.7	27 89 390 1.9	25 62 180 0.8	3 32 63 0.6	5 25 63 0.3	7 22 64	13 23 75	7 14 68 0.3	13 22 76	5 12 60 0.3	13 20 75 0.4	15 49 132 0.9
9 32 82 0.4	50 104 620 3.3	28 78 335 1.1	45 122 348 2.8	24 54 220 0.9	2 14 82	3 13 41 0.4	8 18 108	28 20 167	9 19 141	27 20 162	7 15 126	34 28 114 1.6	14 35 131
13 184 271 1.0	15 109 800 1.4	16 62 205 0.4	15 45 279 0.3	16 48 170 0.9	12 48 172 1.0	5 14 78 0.3	5 30 97	7 14 56	8 15 62 0.4	6 12 50 0.3	6 13 57 0.3	16 41 146 0.8	16 24 105 0.4
12 108 273 0.9	42 132 630 3.6	18 56 190 0.5	8 40 900 0.4	9 24 98	10 55 142 2.1	6 15 69	15 25 132	14 13 54	15 31 72 0.8	13 10 48 0.3	14 29 67 0.6	14 34 86	29 39 176 1.4
9 50 135 0.6	21 32 320 1.2	16 43 186 0.9	12 12 48	16 21 120 0.9	7 37 143 1.3	42 56 302 2.4	14 54 220 0.5	7 21 66 0.3	20 39 120	7 18 59 0.3	18 32 106	14 23 86	6 14 58
17 36 650 1.2	27 75 465 1.2	36 84 1880 0.3	9 20 93	9 28 140 1.1	1 30 159 0.6	12 22 101 0.4	8 11 78	14 50 210 0.7	8 14 106	14 43 200 0.7	6 13 90	6 19 72 0.5	6 15 68
21 39 275 0.4	28 46 345 1.4	31 116 460 2.4	17 36 175 0.5	16 32 172	6 54 225 0.8	13 32 182 0.9	10 18 66 0.4	8 17 184 0.3	8 13 62 0.3	8 15 169 0.4	6 11 56	5 13 58	8 18 56
18 40 147 0.8	44 51 285 1.1	45 56 310 1.2	18 34 155	9 29 180 0.5	8 28 312 0.3	2 17 47	16 27 113	9 30 192 0.4	9 16 43 0.3	10 28 192 0.5	6 15 40	12 30 105 0.7	4 17 34
10 14 113	35 38 360 1.2	N/S 0	5 11 43	7 15 40 0.5	9 32 110	3 18 17	21 34 145 0.3	10 29 440 0.5	21 66 305 1.0	10 27 360 0.5	17 94 2400 0.9	N/S 0	5 16 52
33 73 362 1.2	39 52 450 2.1	7 16 54	10 16 30 0.3	15 14 57	19 61 490 1.1	15 42 271 0.7	7 28 64	8 14 142	9 40 330 0.7	8 13 135	8 33 310 0.5	8 22 72 0.4	8 24 60
N/S 0	19 64 139 1.0	6 15 28	4 10 18	25 42 1020 0.9	16 10 51 0.6	7 16 91 0.3	22 45 135 0.3	81 17 81 2.5	9 24 110 0.6	81 16 80 2.7	8 19 111 0.5	6 19 64 0.3	8 19 59
12 22 158	15 28 85	5 12 29	5 8 28	12 13 37	41 27 42 0.3	12 53 238 0.7	15 27 109	9 16 151	16 36 155 0.6	8 15 146	13 28 146 0.5	4 21 56 0.4	7 16 50
10 16 154 0.8	12 14 79	9 14 30	8 12 45	2 8 14	41 10 21	14 38 361 0.9	15 26 106	8 13 98	18 47 162 0.7	7 12 90	16 40 156 0.6	4 18 54 0.4	6 15 30
24 24 98	18 30 185	5 6 7	10 14 56	2 2 3	4 15 43	10 29 268	24 76 260 0.7	13 49 460 0.6	16 29 117 0.4	13 44 395 0.7	13 24 110 0.4	13 45 115 0.7	4 9 35
32 126 190 0.4	9 14 145	10 10 34	17 10 42	4 14 25	2 15 59	18 60 300	23 46 390 1.2	10 33 480 0.6	9 21 55 2.2	10 28 380 0.7	7 17 51 2.0	8 26 310 0.4	6 13 86
8 22 72	12 11 60	6 12 38 0.6	8 12 33 0.3	3 5 10	4 16 170	5 15 69 0.3	24 32 117	19 47 200 0.3	10 19 225	18 37 182	8 16 200	8 29 127 0.6	10 14 56
13 28 90 0.4	13 14 175	6 14 45	4 12 40	4 10 26	5 21 216 0.9	11 41 207 0.8	9 21 58 0.3	18 26 138	21 59 200 1.5	17 24 129	19 53 196 1.5	8 28 128 0.6	5 17 150
6 14 55	7 11 42	5 11 34	8 14 130	6 14 43 0.4	6 28 214 0.8	5 22 77	11 16 70	26 88 540 0.9	24 38 153 0.7	23 79 460 0.9	23 52 160 0.8	6 46 200 0.4	5 17 33
12 14 54	12 14 75	3 11 28	5 7 12	22 9 43 1.2	4 19 190 0.5	7 24 72 0.5	7 11 46	6 24 140 0.3	11 41 200 0.4	6 23 150	9 36 200 0.3	4 16 119	26 15 142
9 19 76	30 11 328 1.2	4 8 21 0.4	6 12 45	7 9 36	11 16 68	2 6 30	7 13 40						