

GEOLOGICAL, GEOCHEMICAL & GEOPHYSICAL REPORT ON THE

CABIN 1 - 170 - MINERAL CLAIMS

WATSON LAKE MINING DISTRICT  
YUKON TERRITORY



Latitude 60°40'N, Longitude 130°30'W  
N.T.S. 105B/9, 105B/10

Report on Work Performed between  
May 1980 and November 1980

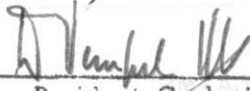
Report by: Terry Lee, Geologist, Serem Ltd.

Date: November, 1980

090673


This report has been examined by the Geological Evaluation Unit and is recommended to the Commissioner to be considered as representation work in the amount of


\$ 59,800.00



Resident Geologist or  
Resident Mining Engineer

Considered as representation work under  
Section 53 (4) Yukon Quartz Mining Act.

  
E. R. BAXTER  
Supervising Mining Recorder

  
Commissioner of Yukon Territory

000278

# S.E.R.E.M. LTD.

300 - 535 THURLOW STREET  
VANCOUVER, B.C.  
V6E 3L2

TELEPHONE: 688-2321

November 27, 1980.



Ms Patti McLeod,  
Mining Recorder,  
Watson Lake Mining District,  
Box 269,  
Watson Lake, Yukon  
Y0A 1C0

Dear Patti:

In regard to the 1980 Assessment Report on the Cabin 1-170 Mineral Claims, please note the following amendment:

Under the sub heading of Field Wages in the Summary of Costs, the following addition should be made:

Junior Prospector 8 days @ \$50.00 x 1.35 = \$540.00

No change is needed to the subtotal for field wages of \$14,610.01.

Yours truly,

A handwritten signature in cursive script that reads "Terry Lee".

Terry Lee.

TL/efg

## TABLE OF CONTENTS

	<u>Page</u>
INTRODUCTION	1
LIST OF CLAIMS	3
EXPLORATION HISTORY	3
REGIONAL GEOLOGY	3
PROPERTY GEOLOGY	4
MINERALIZATION	5
GEOCHEMISTRY	6
GEOPHYSICS	8
EVALUATION	9
RECOMMENDATIONS	9

## APPENDICES

APPENDIX 1	-	TYPE ROCK DESCRIPTIONS
APPENDIX 2	-	GEOCHEMICAL & GEOPHYSICAL METHODS
APPENDIX 3	-	LIST OF PERSONNEL
APPENDIX 4	-	SUMMARY OF COSTS
APPENDIX 5	-	STATEMENT OF QUALIFICATIONS

### LIST OF FIGURES

		<u>Page</u>
Fig. 1	Property Location Map	2
Fig. 2	Claim Map	in pocket
Fig. 3	Geology, Rock Assays & Stream Geochemistry	in pocket
Fig. 4	Soil Geochemistry - Tungsten	in pocket
Fig. 5	Soil Geochemistry - Tin	in pocket
Fig. 6	Soil Geochemistry - Gold	in pocket
Fig. 7	Soil Geochemistry - Molybdenum & Uranium	in pocket
Fig. 8	Soil Geochemistry - Zinc	in pocket
Fig. 9	Soil Geochemistry - Copper	in pocket
Fig. 10	Soil Geochemistry - Silver	in pocket
Fig. 11	Magnetometer Survey	in pocket

### LIST OF TABLES

Table 1	Summary of Mineralization on the Cabin Claims	5
---------	--	---

## INTRODUCTION

The Cabin 1 - 170 mineral claims (Figure 2) are located in the Watson Lake Mining District, 123 kilometers northwest of Watson Lake (Figure 1) at latitude 60°40' N and longitude 130°30' W. The first eighteen claims were staked in June 1979 by Serem Ltd. In September 1979 a nine day field crew carried out prospecting, geological mapping and stream silt geochemistry (Geological and Geochemical Report on the Cabin 1 - 18 Mineral Claims, 1979). This work led to the discovery of a scheelite bearing skarn and relocated a showing of coarse bladed wolframite in a quartz vein. Based on these discoveries as well as anomalous stream silt geochemistry an additional 152 claims were staked in November 1979.

During the summer of 1980 a grid of cut, picketed and flagged lines was laid out on which geological mapping, geochemical and magnetometer surveys were carried out to determine the extent of mineralization on the property.

The Cabin Property is underlain by a contact between a biotite-quartz monzonite to granodiorite stock and older meta-sediments. Work performed in 1980 defined several skarn horizons within the metasediments. The main skarn zone as defined by geology and tungsten soil geochemistry is at least 4 kilometers long and 100 to 150 feet wide. Assay results of grab samples from this skarn zone show that it contains up to 0.381% WO<sub>3</sub> and 0.060 oz/ton Au. Other skarn zones found on the property have similar WO<sub>3</sub> values but are notably lesser in extent and width.

Despite the low WO<sub>3</sub> assays, the long strike extent and width of the main skarn zone provides for the possibility of having large tonnage potential.

# SEREM LTD.

## PROPERTY LOCATION MAP THE YUKON TERRITORY

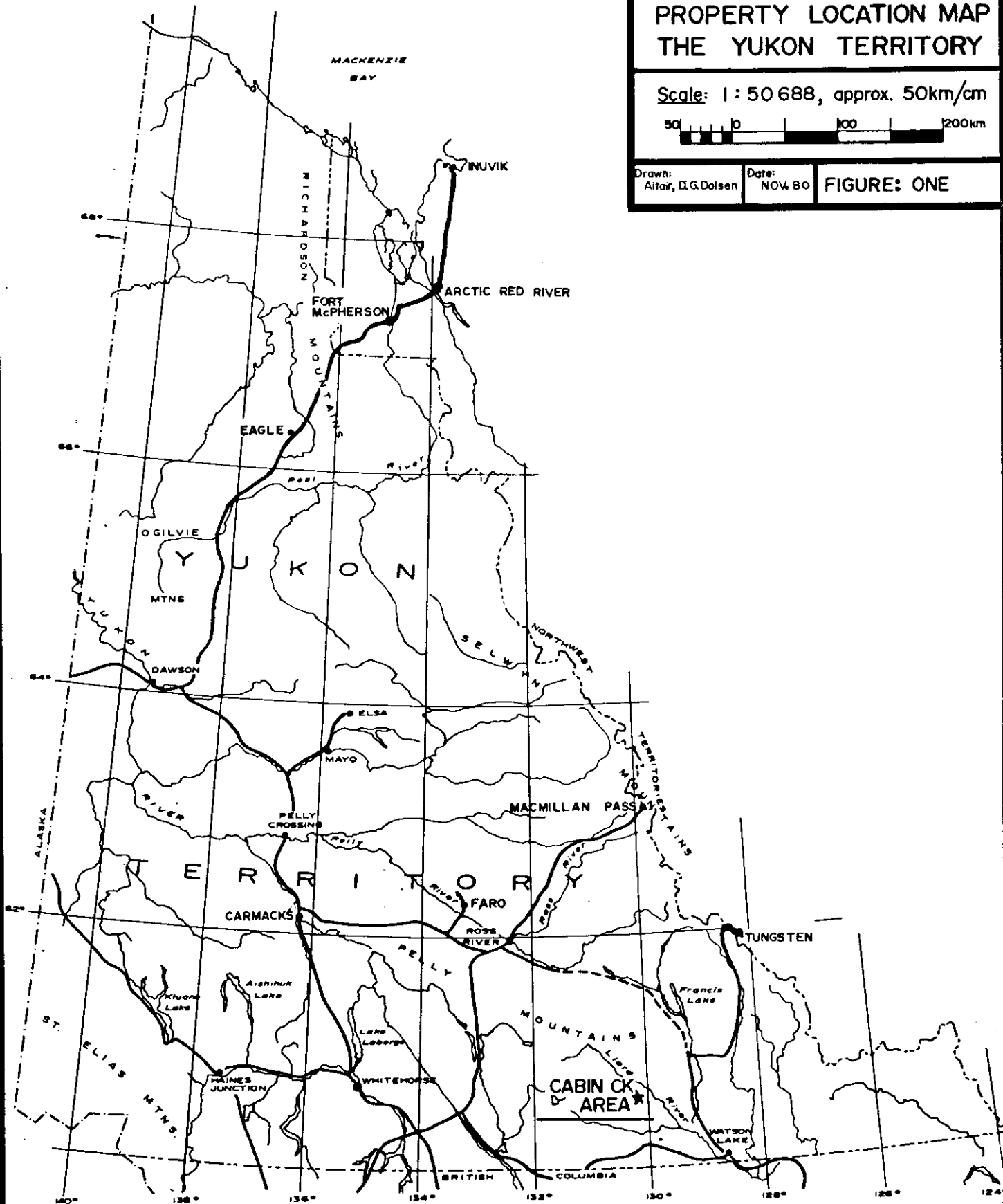
Scale: 1 : 50 688, approx. 50km/cm



Drawn:  
Aitar, D.G. Dolsen

Date:  
NOV 80

FIGURE: ONE



LIST OF CLAIMS

<u>Claim Name</u>	<u>Grant Number</u>	<u>Current Expiry Date</u>
Cabin 1 - 18	YA36913 - YA36930 incl.	June 1984
Cabin 19 - 170	YA46634 - YA46785 incl.	Nov. 1980

EXPLORATION HISTORY

The Cabin claims were staked in 1979 by Serem Ltd. Prospecting, geological mapping and stream silt geochemistry under the supervision of M. Stammers led to the discovery of scheelite bearing skarn and several other small mineralized showings of molybdenite, wolframite, arsenopyrite, pyrite and pyrrhotite. The stream silt geochemical results showed strongly anomalous tungsten values originating from the metasediments north of the north contact, an anomalous tungsten value originating from near the west contact south of Cabin Creek and anomalous uranium values originating from the intrusive south of Cabin Creek.

REGIONAL GEOLOGY

The regional geology is based on mapping (G.S.C. Map 10-1960) by Poole, 1951 - 1955 and Roddick and Green in 1950.

The Cabin 1 - 170 mineral claims are situated over the contact between a belt of late Proterozoic to early Cambrian meta-sedimentary rocks and a Jurassic or Cretaceous aged biotite quartz monzonite and granodiorite stock. Lower Cambrian limestone outcrops extensively two kilometers north of the Cabin claims.

The intrusive stock is suspected to be an outlier of the Cassiar Batholith and is approximately 17 kilometers by 10 kilometers in size.

#### PROPERTY GEOLOGY

The geology of the Cabin claims is shown in Figure 3. The metasedimentary rocks on the property are mainly quartz-biotite schist, quartzite, skarn and recrystallized limestone. The schistosity and bedding trend is east -northeast and dips moderately to the northwest.

Metamorphism of limestone to skarn is shown to be best developed where beds are proximal and parallel to the intrusive contact. The most common skarn lithologies are pyroxene-garnet skarn, cherty skarn or silicified limestone and pyroxene-quartz skarn. The skarn is generally scheelite bearing, and one bed referred to as the Main Skarn Zone is 100 - 150 feet wide and is considered to be the primary economic target. This skarn bed which makes contact with the northwest part of the intrusive is projected to be at least 4 kilometers long.

The intrusive stock ranges in composition from coarse grained granitic to porphyritic biotite-quartz monzonite to granodiorite. Locally the intrusive is altered to a quartz-muscovite-feldspar-fluorite greisen. Closely associated with these greisens are quartz-muscovite veins which are occasionally mineralized with wolframite and scheelite. The greisen zones occur at or close to the intrusive - metasediment contact.

MINERALIZATION

Table 1  
Summary of Mineralization on the Cabin Claims

- 1) Skarn Rocks: scheelite, gold, minor sphalerite
  - Main Skarn Zone
  - Lower Skarn Zone
  
- 2) Quartz Veining: wolframite, scheelite, tourmaline, minor sulphides
  - Main Wolframite Showing, BL 0+00 - 16+50E
  
- 3) Greisen Rocks: fluorite, molybdenite, minor sulphides
  - 17+50E - BL 0+00 to 1+50S
  - 37+50E - 1+00N
  - 18+00S - 1+50E

Tungsten-skarn mineralization occurs in several beds on the property. The tungsten occurs as scheelite usually as small isolated crystals disseminated throughout the pyroxene-garnet and the pyroxene-quartz skarns. The scheelite is readily identified by its bluish-white fluorescence. In some areas scheelite having a yellowish fluorescence is present. The yellowish fluorescence is due to a minor substitution of molybdenite for the tungsten. The tungsten assay values vary from 0.001% to 0.381% WO<sub>3</sub>.

In some locations the skarn also contains low values of gold or zinc. One assay for gold returned 0.060 oz/ton and other gold assays from the same area of this skarn bed returned 0.001 to 0.032 oz/ton gold. Rock geochemical analyses from sphalerite bearing skarn float below the Lower Skarn Zone returned values up to 0.59% zinc.

Quartz-muscovite veins near the contact in both the meta-sediments and intrusive are occasionally mineralized. Coarse blades of wolframite and coarse scheelite crystals occur in a quartz-muscovite vein at the Main Wolframite Showing.

Greisen alteration is found intermittently in the intrusive body near its contact. These greisen zones often contain fluorite and rarely minor molybdenite and sulphides.

#### GEOCHEMISTRY

A reconnaissance grid was established on the Cabin property and over 700 soil samples were collected. All of these samples were analyzed for W, Sn, Au and Mo. Also some of the samples were analyzed for either Ag, Zn and Cu or U.

The data was treated statistically using histograms and cumulative probability graphs. From the cumulative probability graphs the 99, 95, 90 and 80 (for tungsten only) percentile values were used to contour each of the soil geochemistry maps.

#### Tungsten (Figure 4)

Contouring of anomalous tungsten values reveals a large east-northeasterly trending anomaly corresponding to and extending the entire known length of the Main Skarn Zone. A smaller easterly trending anomaly near 18+50S - BL 0+00 may be the result of a smaller hidden skarn zone upslope from the anomaly. A magnetic high-low combination just upslope from

this anomaly corresponds with this suspected skarn bed. The source of smaller anomalies occurring along the northern meta-sediment-intrusive contact is unknown.

Low tungsten values over the Lower Skarn Zone may be the result of heavy overburden.

Tin (Figure 5)

Tin reveals a long east-northeasterly trending anomaly. The source of the tin is not known as only very low or negative assay results were returned. The anomaly follows both the Main Skarn Zone and the northern intrusive contact and often closely resembles the tungsten anomaly.

Gold (Figure 6)

The gold results are mainly spot anomalies and inconclusive. Some of the high gold values such as those near BL 0+00 - 15+00E can be directly related to the Main Skarn Zone. This assumption is reinforced by gold assay values up to 0.06 oz/ton in the skarn.

Molybdenum (Figure 7)

The molybdenum values are generally low. Larger areas of higher values occur over the intrusive and smaller anomalous areas occur over the Main Skarn Zone.

### Uranium (Figure 7)

Uranium was analyzed in the samples that were taken south of Cabin Creek. The results reveal moderate, isolated anomalies over the intrusive stock. These are probably caused by the general enrichment of uranium in the stock and pegmatitic phases. The two most southern anomalies are over a radiometric high area with pegmatites present.

### Zinc, Copper and Silver (Figure 8, 9 & 10)

Zinc, copper and silver were analyzed in samples covering the Lower Skarn Zone. The anomalies are scattered and hard to interpret. Some of the anomalies may be due to the skarn zones in this area.

## GEOPHYSICS

### Magnetometer Survey

A magnetometer survey on the grid (Figure 11) occasionally responded to the skarn unit in high-low combinations of readings. The magnetic response is due to pyrrhotite and/or magnetite rich zones in the skarn. The best response is located just north of the baseline along line 17+50E and part of this anomaly extends to line 15+00E. Other magnetic anomalies are located near the Main Skarn Zone around 2+50E - 7+50S.

The anomaly at the west end of line 17+50S is thought to be the result of a small hidden skarn zone. A tungsten anomaly just downslope helps to reinforce this hypothesis.

### EVALUATION

Results to date indicate that the zone with the most potential is the Main Skarn Zone. The Main Skarn Zone's broad extent and good width provide a large exploration target. A tungsten geochemical anomaly extends over the whole of its known length indicating that it may be generally mineralized with tungsten over its entire length. Rock grab samples taken from this zone so far indicate that sizable areas of skarn averaging 0.1% WO<sub>3</sub> and more can be expected. Gold assays also indicate that areas of the skarn have a low grade gold content which may have some potential.

Other skarn zones on the property are smaller in size and economic potential is contingent upon "high grade" material being present. High grade wolframite and scheelite has been found in place at the main quartz vein wolframite showing and a high grade scheelite skarn boulder was found directly below the lower skarn horizon. But to date no sizable occurrences of "high grade" mineralization have been found.

The source of high uranium values in stream silt geochemistry draining the intrusive was not located but an anomalous area in which pegmatites are found was located to the south of the claims. Not enough work was done to properly evaluate this anomaly.

### RECOMMENDATIONS

The recommended program for the 1981 field season is as follows:

- 1) Completion of magnetometer survey mainly to help locate the Lower Skarn Zone.

- 2) Prospecting and more sampling at the eastern most part of the Main Skarn Zone to further extend this zone.
- 3) The Main Skarn Zone should be trenched and sampled in two or three locations. Suggested locations are: across skarn zone at 16+50E, 12+00E and 1+00E.
- 4) The Lower Skarn Zone should be trenched and sampled upslope from well mineralized float near 5+50W.

## APPENDIX 1

### TYPE ROCK DESCRIPTIONS

#### Garnet-Pyroxene-Skarn

Green, red and brown colours. Fine to coarse, mainly medium grained. Mainly garnet, pyroxene, quartz, calcite, + tremolite, + pyrrhotite, + scheelite. Garnets are generally well formed. Red, brown and green weathering surface. Rough weathering surface. Ring of black Mn oxide just below weathering surface. High specific gravity.

#### Pyroxene-Quartz Skarn

Colour: dark green with white. Aphanitic to fine grained. Mainly pyroxene, quartz, + calcite, + pyrrhotite, + scheelite. Sometimes rusty weathering.

#### Cherty Skarn

Silicified limestone. Aphanitic. Colour: light green to striped light green and white. Mainly quartz and pyroxene. Green and white weathering surface - green more resistant.

#### Garnet-Rich Skarn

Brown or pink colour. Pink or reddish weathering surface. Composed mainly of garnet, + quartz, + calcite, + pyroxene.

## APPENDIX 2

### GEOCHEMICAL METHODS & ANALYSIS

Stream silt samples and soil samples were collected in Kraft sample bags and sent to Min-En Laboratories Ltd., North Vancouver, B.C. These samples were then dried and sieved to - 80 mesh. A portion of the - 80 mesh material was then analyzed by methods appropriate for each element as listed below:

Mo, Cu, Pb, Zn, Ag - Nitric, perchloric digestion -  
A.A. Analysis  
Au - Aqua Regia - A.A. Analysis  
Sn, W - Fusion - Colorimetric  
U - Fluorometric

Rock geochemical samples were ground to - 80 mesh and then analyzed by the appropriate method as listed above.

Rock assay samples were ground to -100 mesh and then analyzed by methods appropriate for each element as listed below:

Mo, Cu, Pb, Zn, Ag,  $WO_3$ , Sn - Acid digestion -  
chemical analysis  
Au - Fire - A.A. Finish

#### Geophysical Method

Readings were taken every 25 meters in the magnetometer survey along the grid lines. The survey was done with a model G-826 portable Proton Magnetometer made by Geometrics. The sensor was used in the backpack arrangement.

APPENDIX 3

LIST OF PERSONNEL

<u>Name</u>	<u>Address</u>	<u>Days Worked</u>	<u>Date</u>
Brian Atkinson, Geologist	North Vancouver, B.C.	1 day	Aug. 26, 1980
Melanie Boulding, Junior Assistant	Whitehorse, Y.T.	4 days	Aug. 19-22, 1980
Rob Falls, Junior Geologist	Don Mills, Ont.	29 days	June 6-23, 1980 July 2-11, 1980 Aug. 22, 1980
Peter Hunter, Junior Assistant	Vancouver, B.C.	41 days	May 27, 1980 June 6-23, 1980 July 2-11, 1980 August 14-25, 1980
Terry Lee, Geologist	Vancouver, B.C.	60 days	June 6-23, 1980 July 2-11, 1980 Aug. 14-25, 1980 Oct. 14-Nov. 14, 1980
Shirley McIntosh, Cook	Pemberton, B.C.	2 days	May 27, 1980 Aug. 24, 1980
Glenn Miles, Junior Prospector	Fulford Harbour, B.C.	8 days	May 25, 1980 Aug. 14-20, 1980
Bill Moody, Prospector	Lopez, Wash.	5 days	May 23-26, 1980 Aug. 22, 1980
Peter Newman, Prospector	N. Vancouver, B.C.	15 days	May 23-26, 1980 Aug. 15-25, 1980
Steve Savola, Geophysical Oper- ator	Vancouver, B.C.	30 days	May 23-24, 1980 June 6-23, 1980 July 2-11, 1980
Mike Stammers, Geologist	Vancouver, B.C.	5 days	
Bill Wilkinson, Senior Geologist	Pt. Coquitlam, B.C.	4 days	June 20-23, 1980
Peter Tegart, Western Manager	N. Vancouver, B.C.	1 day	
Head Office Per- sonnel	Montreal	1 day	

APPENDIX 4

SUMMARY OF COSTS

WAGES

Field

Geologist	1 day @ \$ 65.38 x 1.35	\$ 88.27	
Jr. Assistant	4 days @ \$ 50.00 x 1.35	270.00	
Jr. Geologist	29 days @ \$ 42.30 x 1.35	1,656.35	
Jr. Assistant	41 days @ \$ 42.30 x 1.35	2,341.30	
Geologist	40 days @ \$ 76.19 x 1.35	4,114.29	
Cook	2 days @ \$ 80.95 x 1.35	218.57	
Prospector	5 days @ \$ 67.30 x 1.35	454.33	
Prospector	15 days @ \$ 69.23 x 1.35	1,401.92	
Jr. Assistant	30 days @ \$ 46.15 x 1.35	1,869.23	
Geologist	3 days @ \$ 90.48 x 1.35	366.43	
Geologist	4 days @ \$145.00 x 1.35	783.00	
Geologist	1 day @ \$175.00 x 1.35	236.25	
Manager	1 day @ \$200.00 x 1.35	270.00	\$14,610.01

Office Compilation

Geologist	20 days @ \$ 76.19 x 1.35	\$2,057.13	
Geologist	2 days @ \$ 90.48 x 1.35	244.30	
Draftsman	3 days @ \$ 70.00 x 1.35	283.50	2,584.93

Helicopter

Charter		\$16,927.50	
Fuel		2,250.00	19,177.50

Room & Board

\$25/day/man x 184			4,600.00
--------------------	--	--	----------

Line Cutting

18.6 miles (30 km) @ \$320/mile \$ 5,871.04

Miscellaneous Transportation

Truck Rental and fuel 125.00

Geochemical Analysis

Rock Assays & Geochem	\$ 2,499.00	
Soil & silt geochem	10,951.80	
Shipping	300.00	13,750.80
		<hr/>
		\$60,719.28
		=====

STATEMENT OF QUALIFICATIONS

I, TERRY R. LEE, of Vancouver, British Columbia, hereby certify that:

1. I am a geologist employed by Serem Ltd. of 300 - 535 Thurlow Street, Vancouver, B.C.
2. I hold a B.A.Sc. in geological engineering from the University of Toronto, Toronto, Ontario.
3. I have worked in geology and mineral exploration for 22 months.
4. I am the author of this report and the field work described in this report was carried out under my supervision.
5. I have no financial interest in the claims covered by this report or in Serem Ltd.

*Terry Lee*

Terry R. Lee,  
Geologist

Vancouver, B.C.  
November, 1980

AFFIDAVIT

IN THE MATTER OF APPLICATIONS FOR CERTIFICATES OF WORK  
FOR THE CABIN 1 - 170 MINERAL CLAIMS, WATSON LAKE MINING  
DISTRICT, YUKON TERRITORY, SUBMITTED ON BEHALF OF SEREM  
LIMITED.

I, Terry R. Lee, geologist of SEREM Ltd., Suite 300,  
535 Thurlow Street, Vancouver, British Columbia, HEREBY CERTIFY  
THAT

The preceding SUMMARY OF COSTS totalling \$60,719 which  
is submitted in support of the attached Application for  
Certificates of Work, is the actual amount incurred by  
SEREM Ltd., in conducting a geological, geochemical and  
geophysical program on the Cabin Mineral Claims, Watson Lake  
Mining District, during the 1980 field season.

AND THAT Applications for Certificates of Work are attached  
for the following Representation Work:

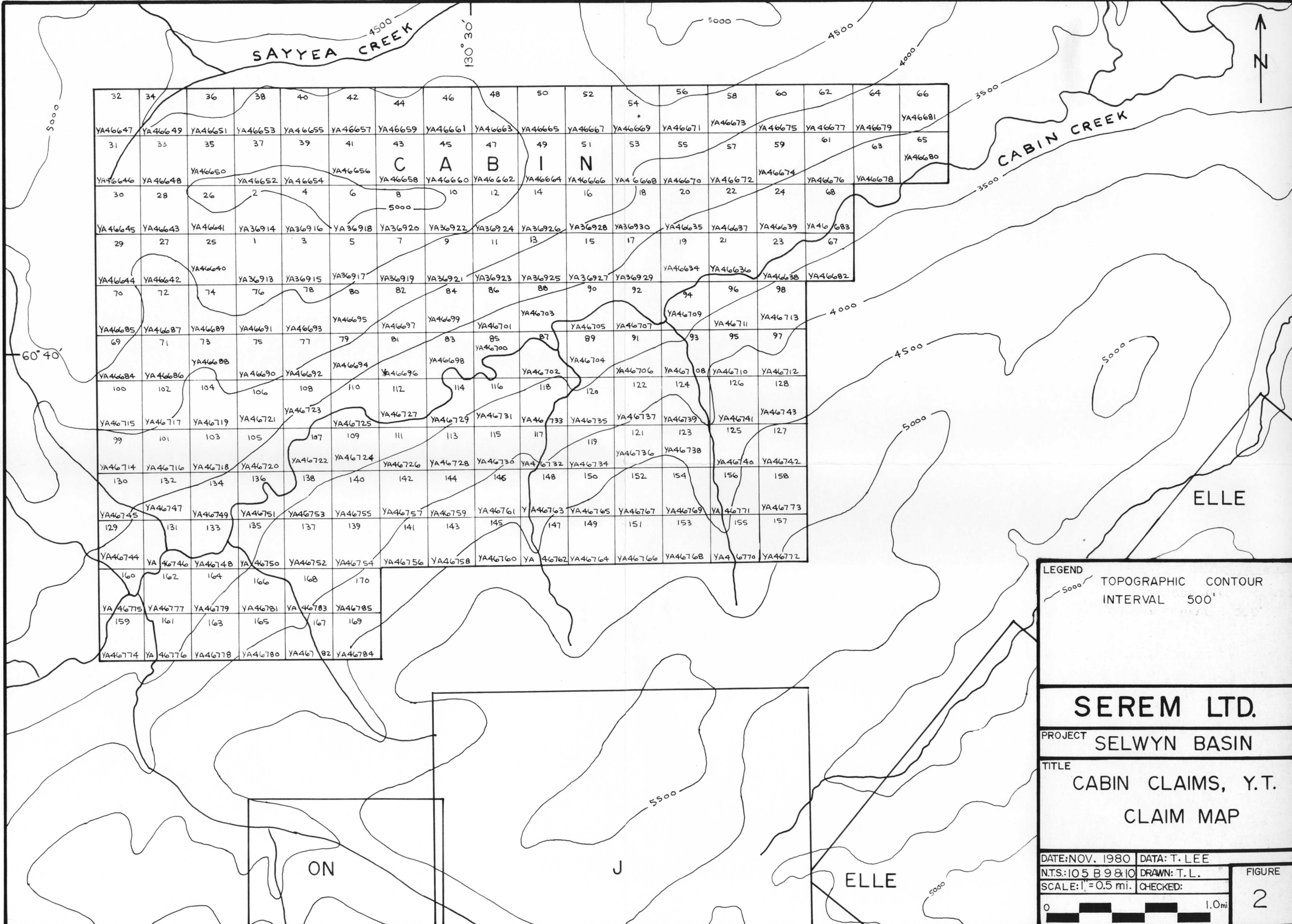
<u>GROUPS</u>	<u>MINERAL CLAIMS</u>	<u>GRANT NUMBERS</u>	<u>AMOUNT APPLIED</u>
CABIN GROUP I (105 B/10)	Cabin 1-8 incl. (8 claims X 1 year's work applied)	YA 36913-36920	\$ 800
CABIN GROUP II (105 B/9 & 10)	Cabin 9-18 incl. (10 claims X 1 year's work applied)	YA 36921-36930	\$1,000
CABIN GROUP III (105 B/10)	Cabin 25-26 incl. YA 46640-46641 ) Cabin 31-44 incl. YA 46646-46659 ) (16 claims X 5 years' work applied)		\$8,000
CABIN GROUP IV (105 B/9 & 10)	Cabin 45-60 incl. (16 claims X 5 years' work applied)	YA 46660-46675	\$8,000

TL  
MSA

<u>GROUPS</u>	<u>MINERAL CLAIMS</u>	<u>GRANT NUMBERS</u>	<u>AMT. APPLIED</u>
CABIN GROUP V (105 B/9)	Cabin 19-24 incl. Cabin 61-68 incl. (14 claims X 3 years' work applied)	YA 46634-46639 ) YA 46676-46683 )	\$4,200
CABIN GROUP VI (105 B/10)	Cabin 27-30 incl. Cabin 69-80 incl. (16 claims X 5 years' work applied)	YA 46642-46645 ) YA 46684-46695 )	\$8,000
CABIN GROUP VII (105 B/9 & 10)	Cabin 83-98 incl. (16 claims X 3 years' work applied)	YA 46698-46713	\$4,800
CABIN GROUP VIII (105 B/10)	Cabin 81-82 incl. Cabin 99-112 incl. (16 claims X 5 years' work applied)	YA 46696-46697 ) YA 46714-46727 )	\$8,000
CABIN GROUP IX (105 B/9 & 10)	Cabin 113-128 incl. (16 claims X 2 years' work applied)	YA 46728-46743	\$3,200
CABIN GROUP X (105 B/10)	Cabin 129-142 incl. (14 claims X 5 years' work applied)	YA 46744-46757	\$7,000
CABIN GROUP XI (105 B/9 & 10)	Cabin 143-158 incl. (16 claims X 2 years' work applied)	YA 46758-46773	\$3,200
CABIN GROUP XII (105 B/10)	Cabin 159-170 incl. (12 claims X 3 years' work applied)	YA 46774-46785	\$3,600
	Total applied		\$59,800
	Balance of Cost Unapplied		\$ 919

SWORN BEFORE ME at Vancouver, )  
British Columbia, this 14<sup>th</sup> day )  
of November , 1980 )  
\_\_\_\_\_  
Notary Public )

*Terry R. Lee*  
\_\_\_\_\_  
Terry R. Lee



32	34	36	38	40	42	44	46	48	50	52	54	56	58	60	62	64	66
YA46647	YA46649	YA46651	YA46653	YA46655	YA46657	YA46659	YA46661	YA46663	YA46665	YA46667	YA46669	YA46671	YA46673	YA46675	YA46677	YA46679	YA46681
31	33	35	37	39	41	43	45	47	49	51	53	55	57	59	61	63	65
YA46646	YA46648	YA46650	YA46652	YA46654	YA46656	YA46658	YA46660	YA46662	YA46664	YA46666	YA46668	YA46670	YA46672	YA46674	YA46676	YA46678	YA46680
30	28	26	2	4	6	8	10	12	14	16	18	20	22	24	68		
YA46645	YA46643	YA46641	YA36914	YA36916	YA36918	YA36920	YA36922	YA36924	YA36926	YA36928	YA36930	YA46635	YA46637	YA46639	YA46683		
29	27	25	1	3	5	7	9	11	13	15	17	19	21	23	67		
YA46644	YA46642	YA46640	YA36913	YA36915	YA36917	YA36919	YA36921	YA36923	YA36925	YA36927	YA36929	YA46634	YA46636	YA46638	YA46682		
70	72	74	76	78	80	82	84	86	88	90	92	94	96	98			
YA46685	YA46687	YA46689	YA46691	YA46693	YA46695	YA46697	YA46699	YA46701	YA46703	YA46705	YA46707	YA46709	YA46711	YA46713			
69	71	73	75	77	79	81	83	85	87	89	91	93	95	97			
YA46684	YA46686	YA46688	YA46690	YA46692	YA46694	YA46696	YA46698	YA46700	YA46702	YA46704	YA46706	YA46708	YA46710	YA46712			
100	102	104	106	108	110	112	114	116	118	120	122	124	126	128			
YA46715	YA46717	YA46719	YA46721	YA46723	YA46725	YA46727	YA46729	YA46731	YA46733	YA46735	YA46737	YA46739	YA46741	YA46743			
99	101	103	105	107	109	111	113	115	117	119	121	123	125	127			
YA46714	YA46716	YA46718	YA46720	YA46722	YA46724	YA46726	YA46728	YA46730	YA46732	YA46734	YA46736	YA46738	YA46740	YA46742			
130	132	134	136	138	140	142	144	146	148	150	152	154	156	158			
YA46745	YA46747	YA46749	YA46751	YA46753	YA46755	YA46757	YA46759	YA46761	YA46763	YA46765	YA46767	YA46769	YA46771	YA46773			
129	131	133	135	137	139	141	143	145	147	149	151	153	155	157			
YA46744	YA46746	YA46748	YA46750	YA46752	YA46754	YA46756	YA46758	YA46760	YA46762	YA46764	YA46766	YA46768	YA46770	YA46772			
160	162	164	166	168	170												
YA46775	YA46777	YA46779	YA46781	YA46783	YA46785												
159	161	163	165	167	169												
YA46774	YA46776	YA46778	YA46780	YA46782	YA46784												

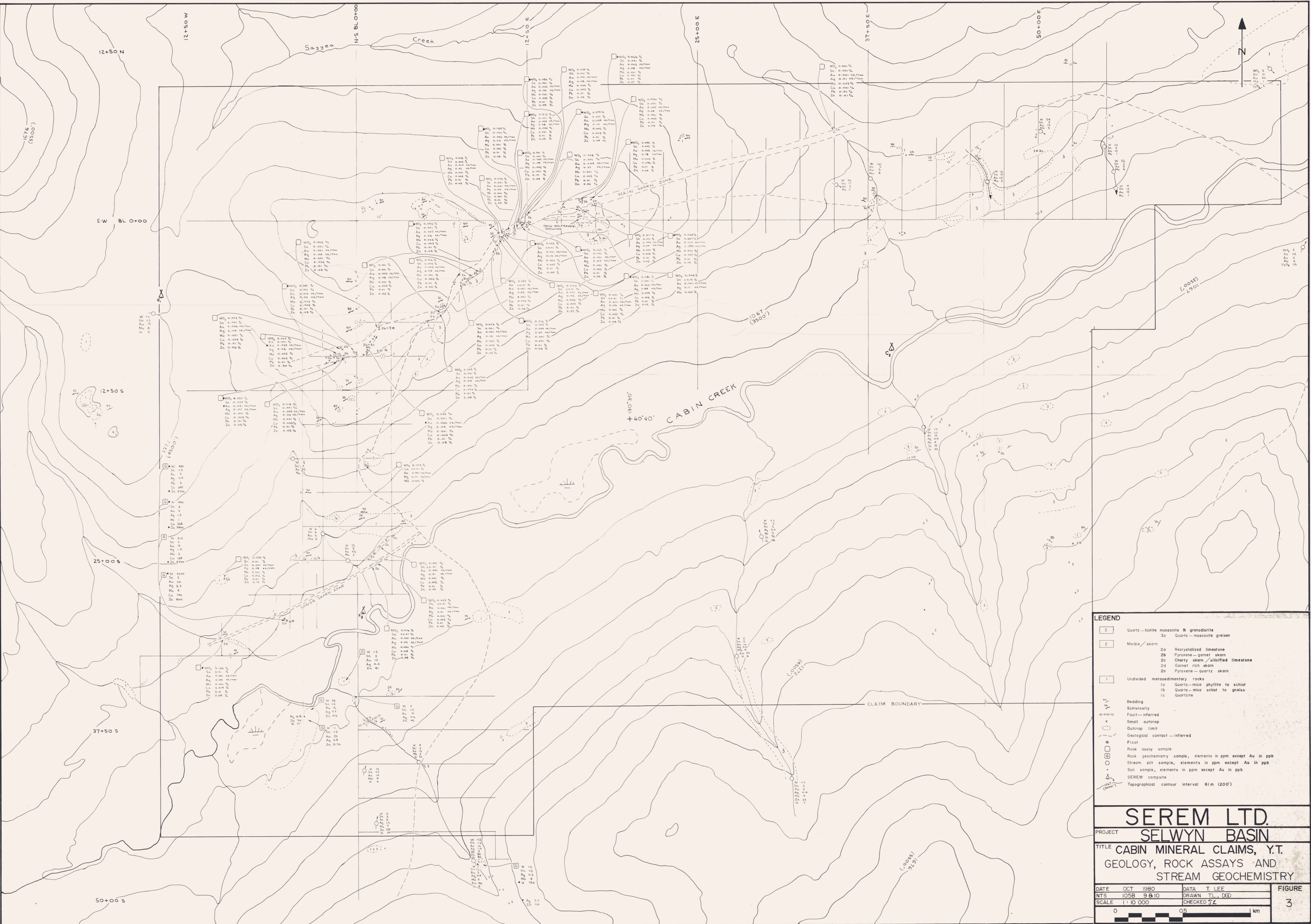
**LEGEND**  
 5000' TOPOGRAPHIC CONTOUR  
 INTERVAL 500'

**SEREM LTD.**  
 PROJECT SELWYN BASIN  
 TITLE CABIN CLAIMS, Y.T.  
 CLAIM MAP

DATE: NOV. 1980 DATA: T. LEE  
 N.T.S.: 105 B 9 & 10 DRAWN: T. L.  
 SCALE: 1" = 0.5 mi. CHECKED:

FIGURE  
 2

0 1.0mi



**LEGEND**

3	Quartz-biotite monzonite & granodiorite
3a	Quartz-muscovite greisen
2	Marble/skarn
2a	Recrystallized limestone
2b	Pyroxene-garnet skarn
2c	Cherty skarn/silicified limestone
2d	Garnet rich skarn
2e	Pyroxene-quartz skarn
1	Undivided metasedimentary rocks
1a	Quartz-mica phyllite to schist
1b	Quartz-mica schist to gneiss
1c	Quartzite
~	Bedding
~	Schistosity
- - -	Fault-inferred
x	Small outcrop
o	Outcrop limit
- - -	Geological contact-inferred
o	Floot
o	Rock geochemistry sample, elements in ppm except Au in ppb
o	Stream silt sample, elements in ppm except Au in ppb
o	Soil sample, elements in ppm except Au in ppb
o	SEREM composite
o	Topographical contour Interval 61m (200')

**SEREM LTD.**

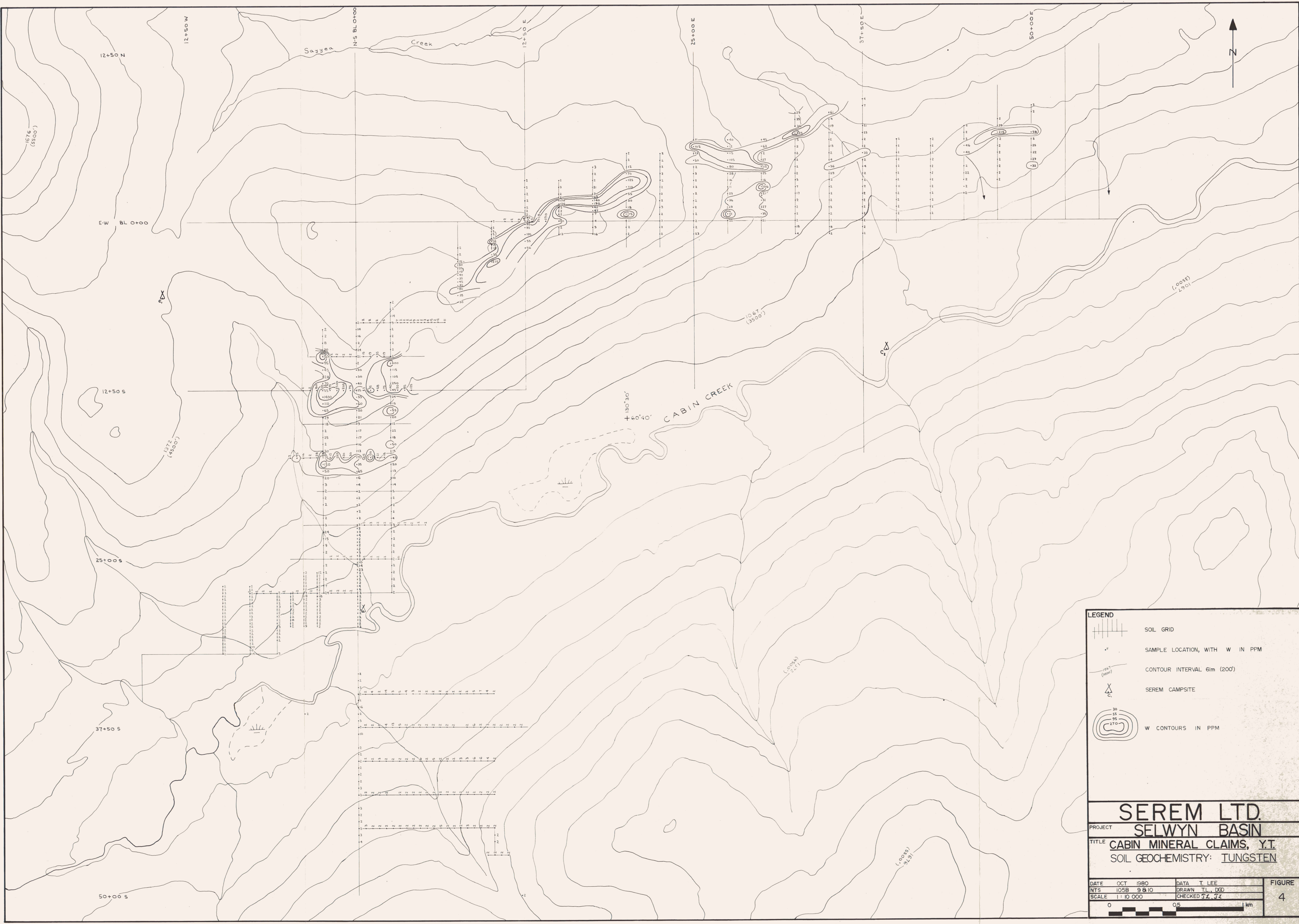
PROJECT **SELWYN BASIN**

TITLE **CABIN MINERAL CLAIMS, Y.T.**



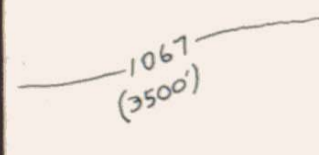
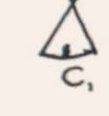
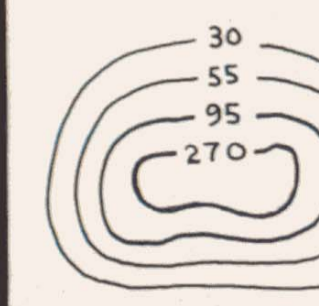
**GEOLOGY, ROCK ASSAYS AND  
STREAM GEOCHEMISTRY**

DATE	OCT 1980	DATA	T. LEE	FIGURE <b>3</b>
NTS	105B 9810	DRAWN	T.L. DGD	
SCALE	1:10 000	CHECKED	T.L.	

0 0.5 1 km



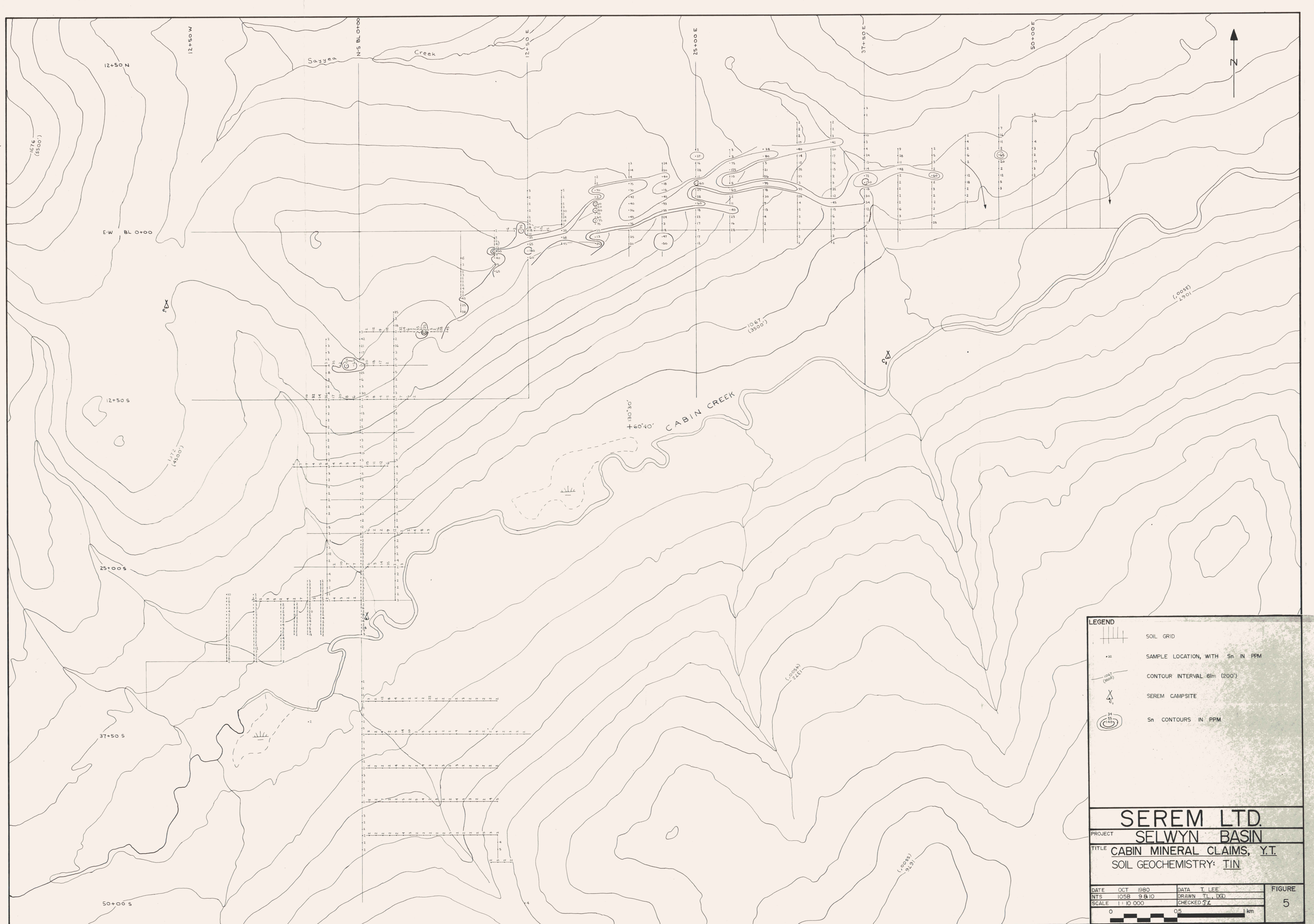
**LEGEND**

-  SOIL GRID
-  SAMPLE LOCATION, WITH W IN PPM
-  CONTOUR INTERVAL 6m (200')
-  SEREM CAMPSITE
-  W CONTOURS IN PPM

**SEREM LTD.**  
 PROJECT **SELWYN BASIN**  
 TITLE **CABIN MINERAL CLAIMS, Y.T.**  
 SOIL GEOCHEMISTRY: **TUNGSTEN**

DATE	OCT 1980	DATA	T. LEE	FIGURE
NTS	105B 9810	DRAWN	TL, DGD	
SCALE	1:10 000	CHECKED	JZ, JZ	4

0 05 1 km



**LEGEND**

- SOIL GRID
- SAMPLE LOCATION, WITH Sn IN PPM
- CONTOUR INTERVAL 6m (200')
- SEREM CAMPSITE
- Sn CONTOURS IN PPM

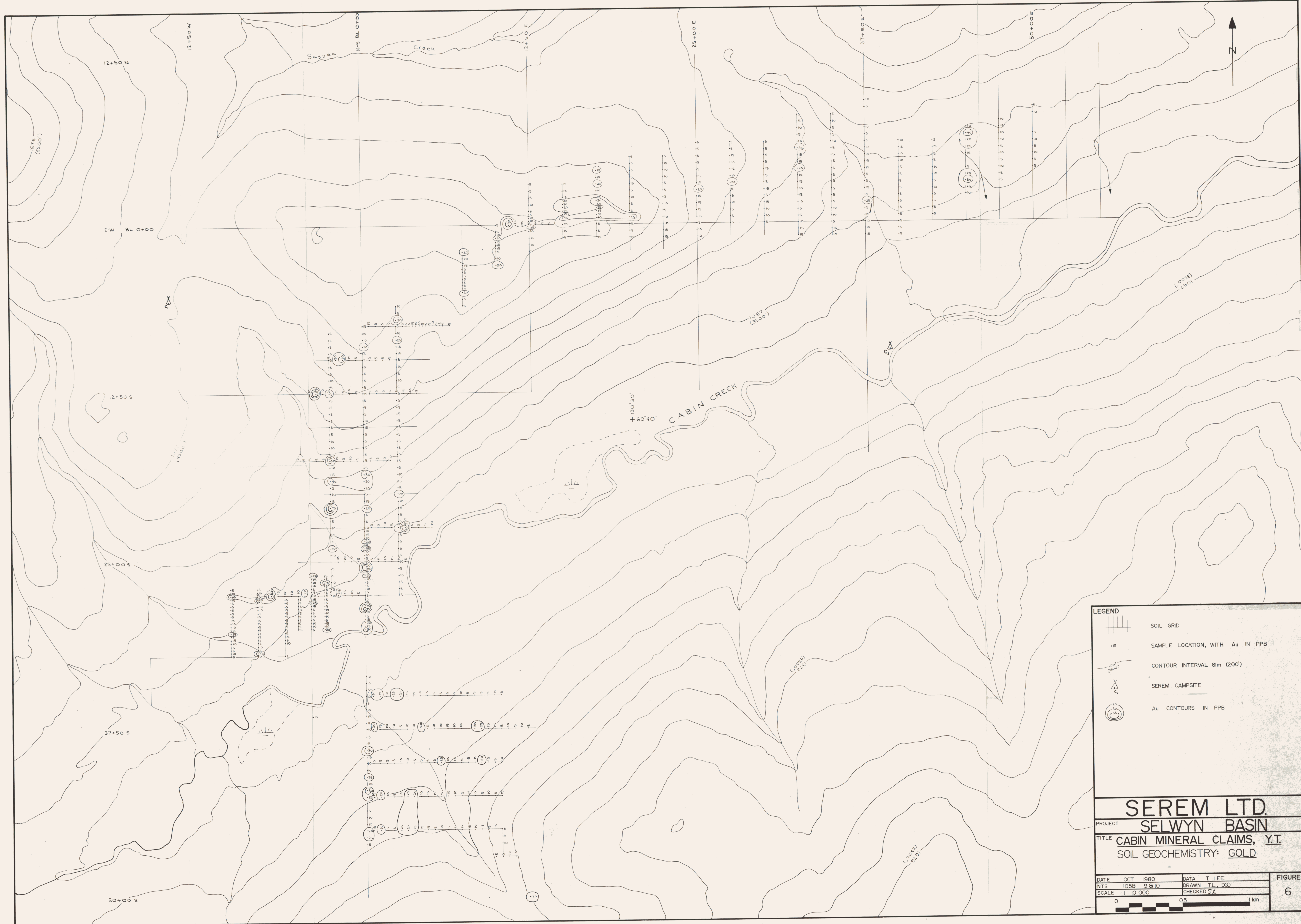
---

**SEREM LTD.**  
 PROJECT **SELWYN BASIN**  
 TITLE **CABIN MINERAL CLAIMS, Y.T.**  
 SOIL GEOCHEMISTRY: **TIN**

---

DATE	OCT 1980	DATA	T. LEE	FIGURE
NTS	105B 9810	DRAWN	TL, DGD	
SCALE	1 : 10 000	CHECKED	JZ	5

0 0.5 1 km



**LEGEND**

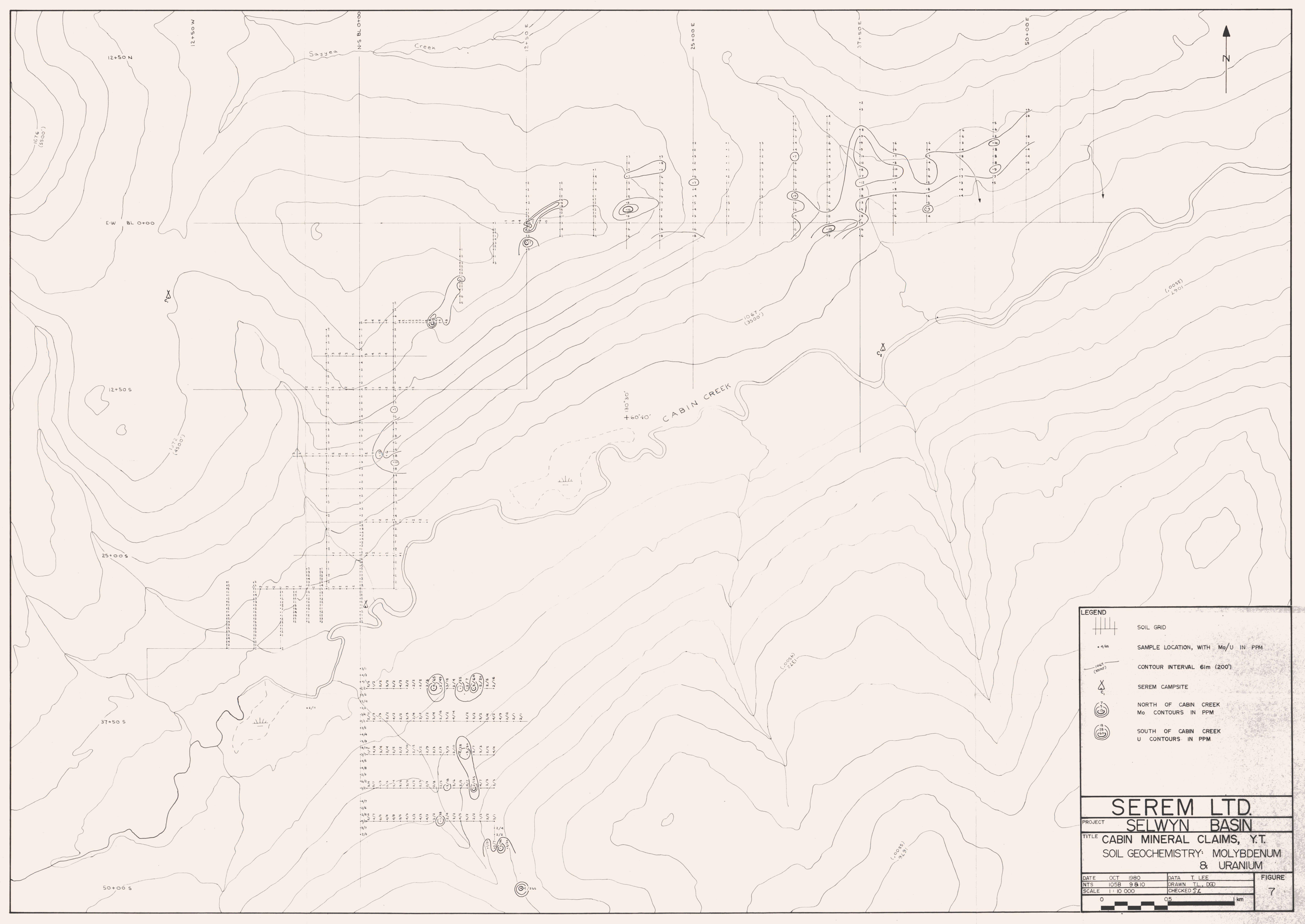
- SOIL GRID
- SAMPLE LOCATION, WITH Au IN PPB
- CONTOUR INTERVAL 61m (200')
- SEREM CAMPSITE
- Au CONTOURS IN PPB

---

**SEREM LTD.**  
 PROJECT **SELWYN BASIN**  
 TITLE **CABIN MINERAL CLAIMS, Y.T.**  
 SOIL GEOCHEMISTRY: **GOLD**

DATE	OCT 1980	DATA	T. LEE	FIGURE
NTS	105B 9810	DRAWN	T.L. DGD	
SCALE	1 : 10 000	CHECKED	JZ	6

0 0.5 1 km



**LEGEND**

- SOIL GRID
- SAMPLE LOCATION, WITH Mo/U IN PPM
- CONTOUR INTERVAL 6m (200')
- SEREM CAMPSITE
- NORTH OF CABIN CREEK Mo CONTOURS IN PPM
- SOUTH OF CABIN CREEK U CONTOURS IN PPM

**SEREM LTD.**

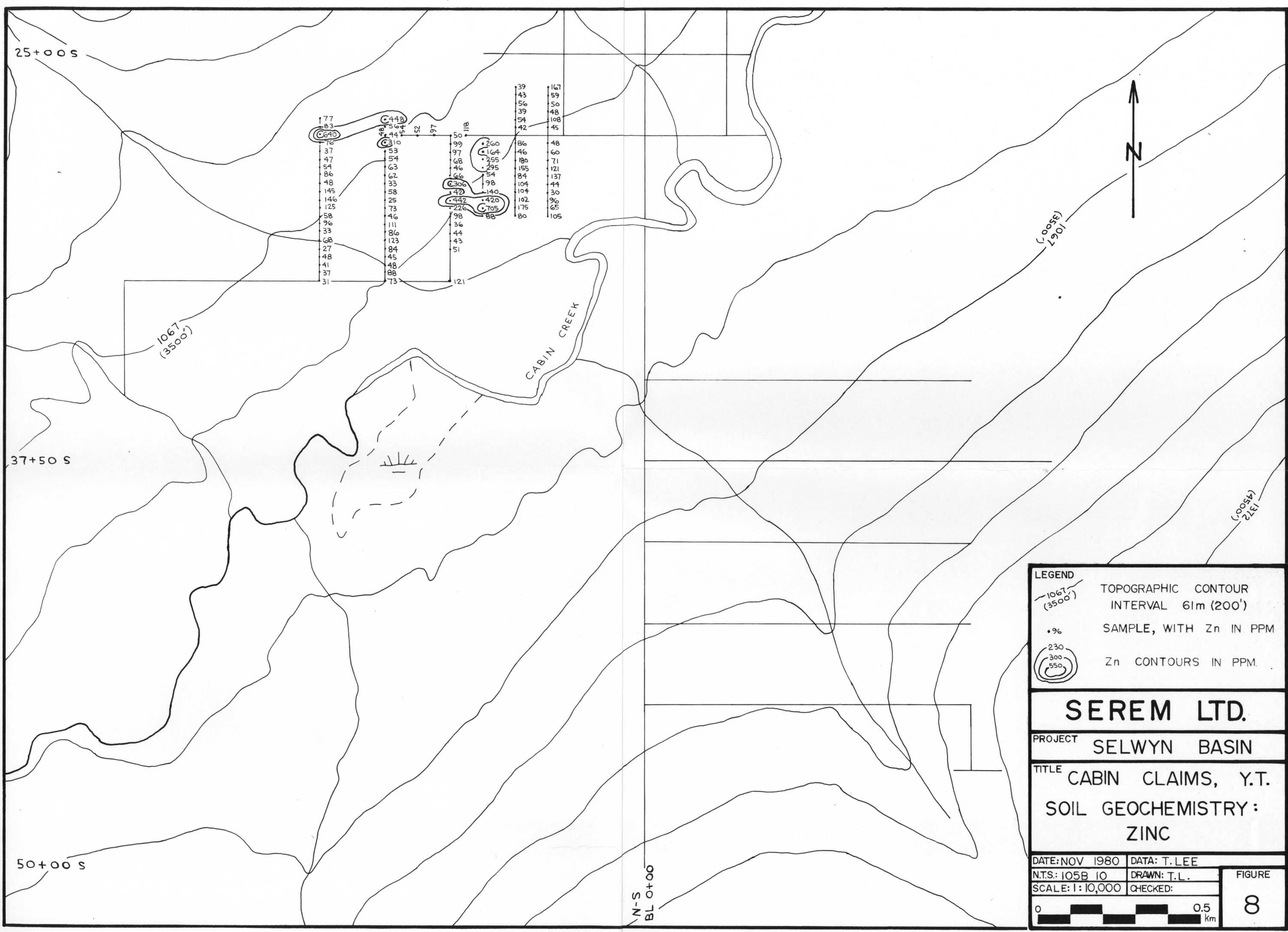
PROJECT **SELWYN BASIN**

TITLE **CABIN MINERAL CLAIMS, Y.T.**  
**SOIL GEOCHEMISTRY: MOLYBDENUM & URANIUM**

DATE	OCT 1980	DATA	T. LEE	FIGURE
NTS	1:10 000	DRAWN	T.L., DGD	
SCALE	1:10 000	CHECKED	T.L.	

0 0.5 km

7



25+00 S

37+50 S

50+00 S

N-S  
BL 0+00



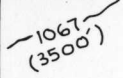
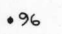

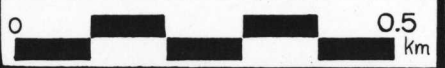
1067  
(3500')

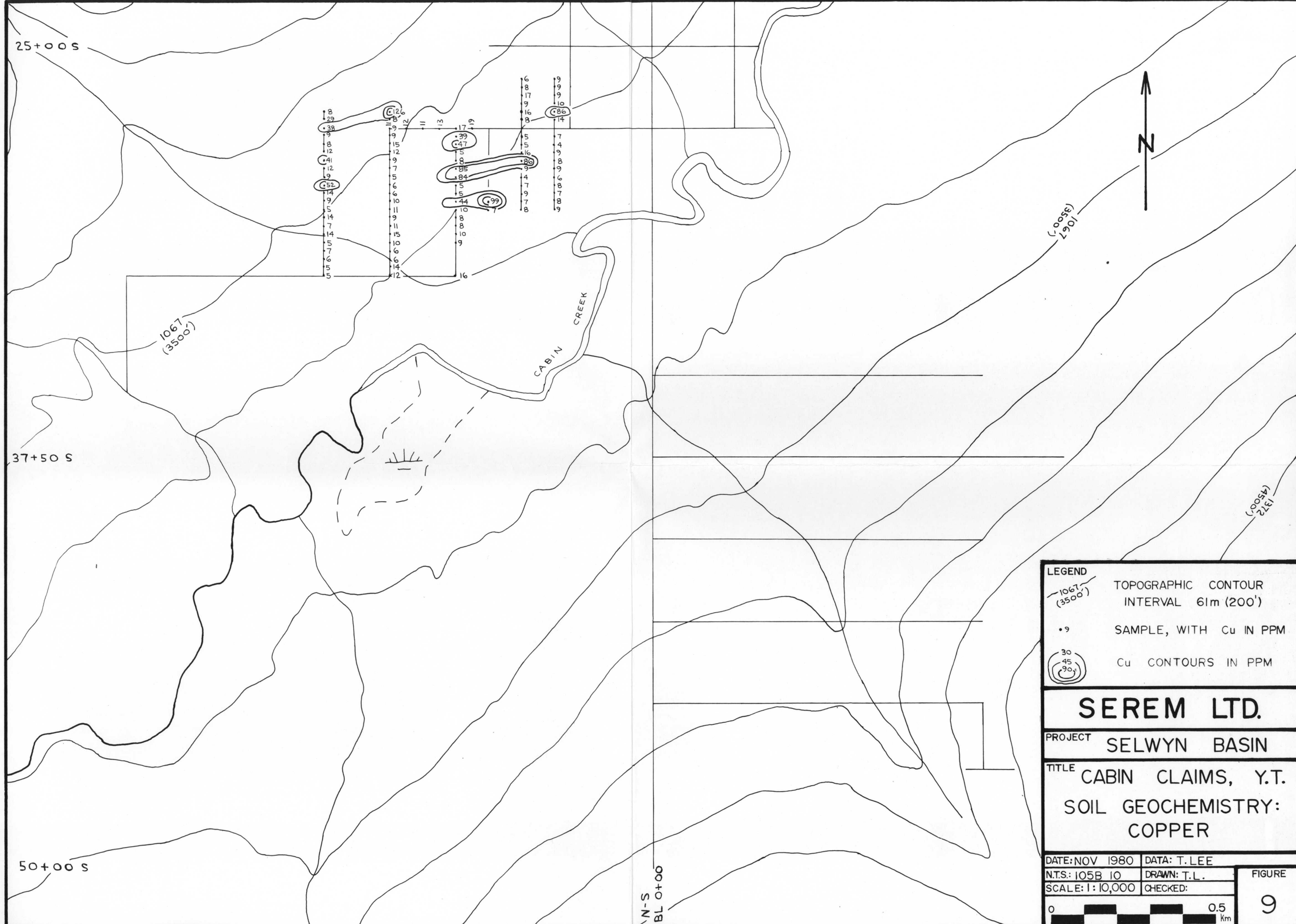
CABIN CREEK

1067  
(3500')

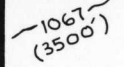
1372  
(4500')

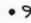
77	83	76	37	47	54	86	48	145	146	125	58	96	33	68	27	48	41	37	31
448	448	448	53	54	63	62	33	58	25	73	46	111	86	123	84	45	48	88	73
52	97	50	99	97	68	46	66	142	226	98	36	86	123	43	51	121			
39	43	39	56	56	39	54	42	86	46	188	84	104	104	102	175	80			
167	59	50	48	108	45	48	60	71	121	137	44	30	96	65	105				


<b>LEGEND</b>	
	TOPOGRAPHIC CONTOUR INTERVAL 61m (200')
	SAMPLE, WITH Zn IN PPM
	Zn CONTOURS IN PPM.
<b>SEREM LTD.</b>	
PROJECT SELWYN BASIN	
TITLE CABIN CLAIMS, Y.T. SOIL GEOCHEMISTRY: ZINC	
DATE: NOV 1980	DATA: T. LEE
N.T.S: 105B 10	DRAWN: T.L.
SCALE: 1:10,000	CHECKED:
	
FIGURE <b>8</b>	



**LEGEND**

 TOPOGRAPHIC CONTOUR  
INTERVAL 61m (200')

 SAMPLE, WITH Cu IN PPM


 Cu CONTOURS IN PPM

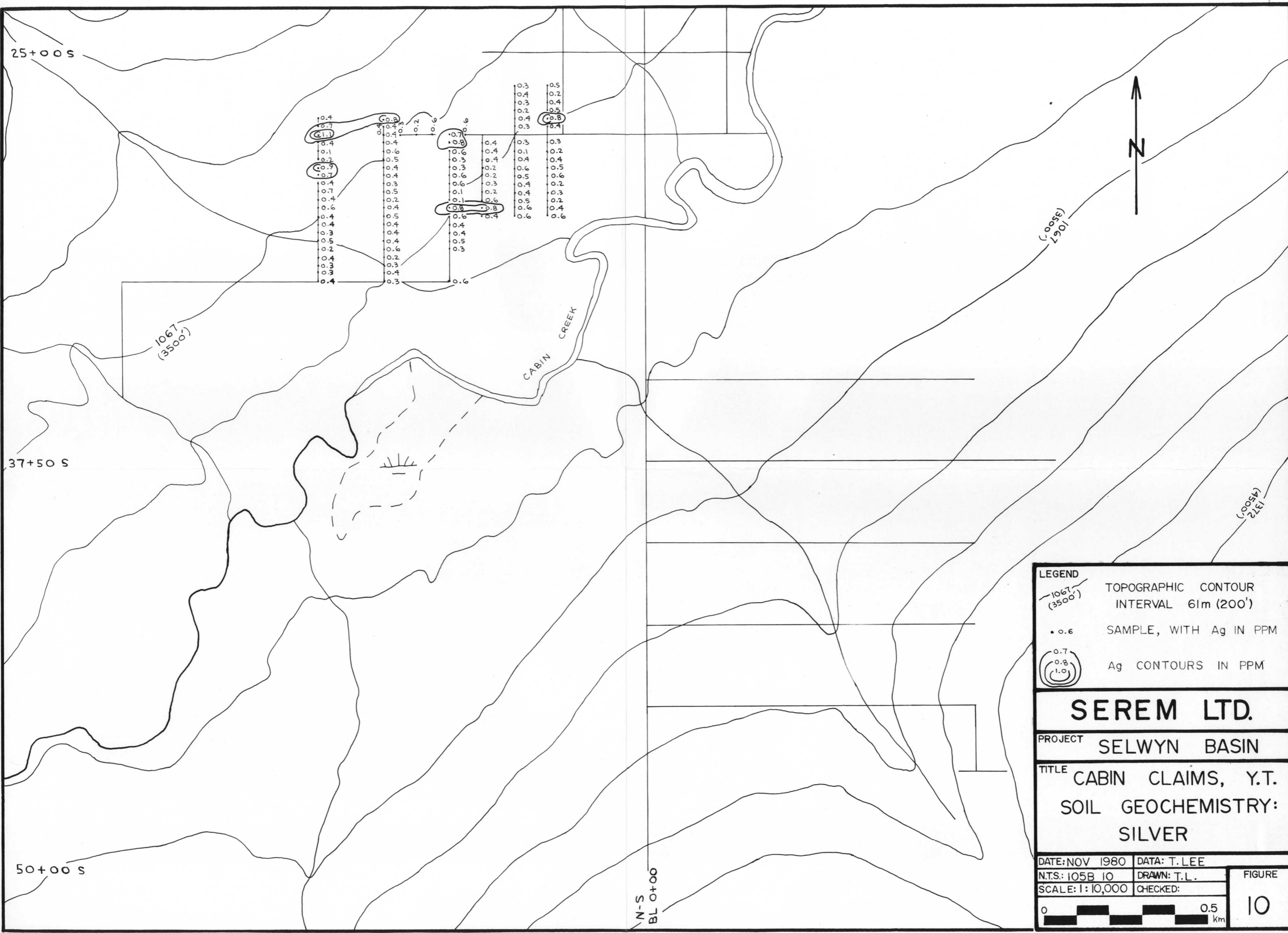
**SEREM LTD.**

PROJECT SELWYN BASIN

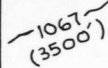
TITLE CABIN CLAIMS, Y.T.  
SOIL GEOCHEMISTRY:  
COPPER

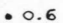
DATE: NOV 1980	DATA: T. LEE	FIGURE <b>9</b>
N.T.S.: 105B 10	DRAWN: T.L.	
SCALE: 1:10,000	CHECKED:	


0  0.5 km



**LEGEND**

 TOPOGRAPHIC CONTOUR  
INTERVAL 61m (200')

 0.6 SAMPLE, WITH Ag IN PPM


 0.7  
0.8  
1.0 Ag CONTOURS IN PPM

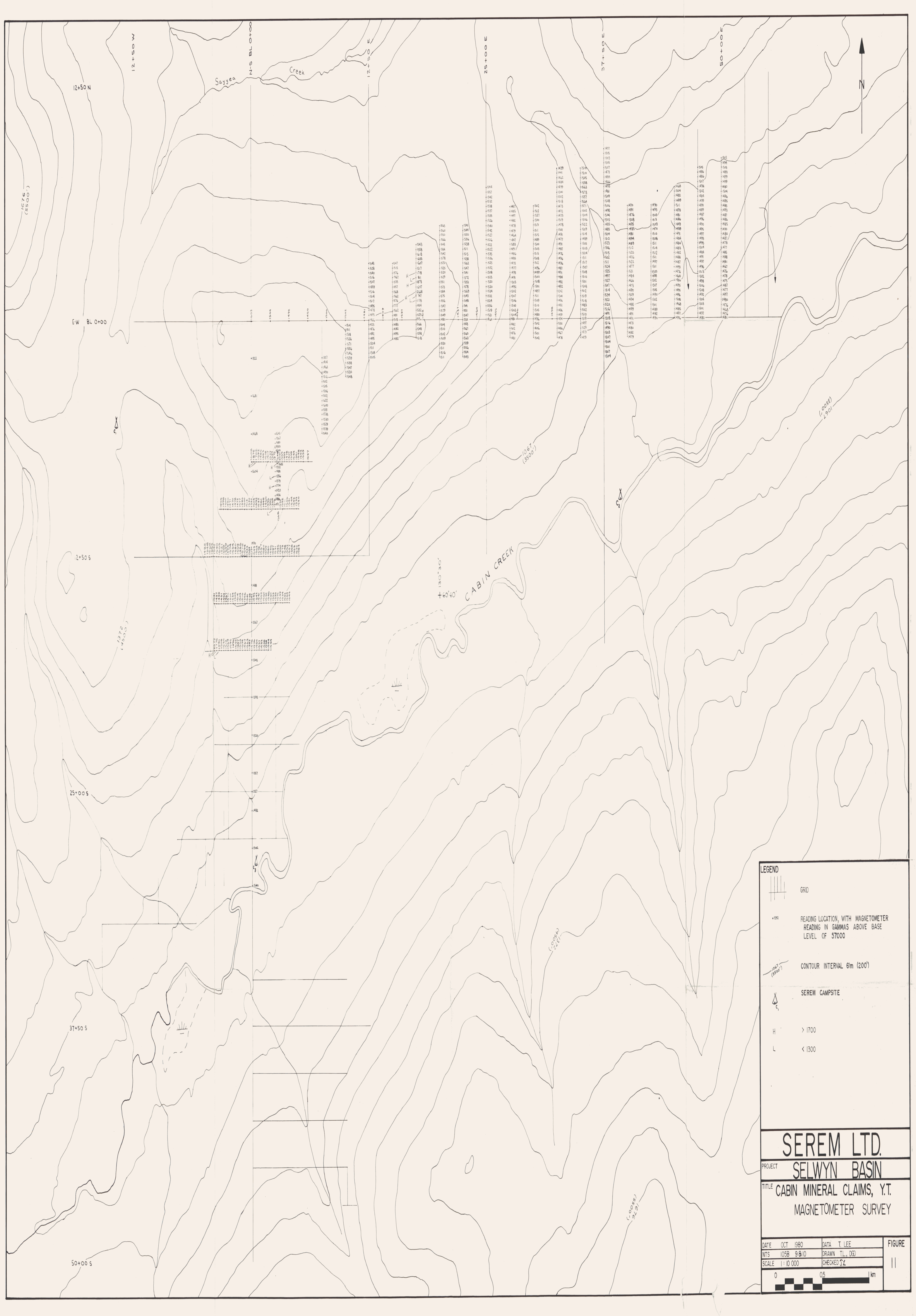
**SEREM LTD.**

PROJECT SELWYN BASIN

TITLE CABIN CLAIMS, Y.T.  
SOIL GEOCHEMISTRY:  
SILVER

DATE: NOV 1980	DATA: T. LEE	FIGURE <b>10</b>
N.T.S.: 105B 10	DRAWN: T.L.	
SCALE: 1:10,000	CHECKED:	

 0 0.5 Km



**LEGEND**

- GRID
- READING LOCATION, WITH MAGNETOMETER  
READING IN GAMMAS ABOVE BASE  
LEVEL OF 57000
- CONTOUR INTERVAL 6m (200')
- SEREM CAMPSITE
- H > 1700
- L < 1300

---

**SEREM LTD.**  
 PROJECT **SELWYN BASIN**  
 TITLE **CABIN MINERAL CLAIMS, Y.T.**  
**MAGNETOMETER SURVEY**

---

DATE	OCT 1980	DATA	T. LEE	FIGURE 11
NTS	1:5000	DRAWN	T.L., DED	
SCALE	1:10 000	CHECKED	JL	

0 0.5 km