

COMINCO LTD.

EXPLORATION
NTS: 105H/G

WESTERN DISTRICT



DIAMOND DRILLING - 1980

BARB PROPERTY

WATSON LAKE M.D., YUKON

FRANCES LAKE AREA

LATITUDE: 61°27'N LONGITUDE: 129°25'W

WORK PERFORMED: APRIL 1 - MAY 21, 1980



This report has been examined by the Geological Evaluation Unit and is recommended to the Commissioner to be considered as representation work in the Yukon Territory.

Resident Geologist
Resident Mining Engineer

Considered as representation work under Section 53 (4) Yukon Quartz Mining Act.

Commissioner of Yukon Territory

Report by: A.B. Mawer
A.B. Mawer
Senior Geologist

Endorsed for Release by: [Signature]
G. Harden, Manager
Exploration
Western District

090669

NOVEMBER 1980

A.B. MAWER



This report has been examined by the Geological Evaluation Unit and is recommended to the Commissioner to be considered as representation work in the amount of \$ 25,500.00

[Signature]
 Resident Geologist or
 Resident Mining Engineer

Considered as representation work under
 Section 53 (4) Yukon Quartz Mining Act.

[Signature]
 B. R. BAXTER
 Supervising Mining Recorder

[Signature]
 Commissioner of Yukon Territory



000000



P. O. Box 269
Watson Lake, Yukon
Y0A 1C0

28 November, 1980

Your file *Votre référence*

Our file *Notre référence*



REGIONAL DIRECTOR RESOURCES

Attention: Supervising Mining
Recorder

RESTRICTED

Enclosed for your files are drill logs submitted by Cominco Ltd. for
assessment on the Barb mineral claims. *105-H-6*

Barb 12:	DDH 80-1	216.4M
	DDH 80-2	268.0M
	DDH 80-3	270.3M
	DDH 80-4	72.2M
	DDH 80-5	387.2M

Assessment Credit requested: 25,500.00

Drill core is being stored at the camp located on Barb 9.

Yours truly,

Patti L. McLeod
Mining Recorder
Watson Lake Mining District

PLM/kar
Encl.
cc: Regional Geologist

TABLE OF CONTENTS

INDEX MAP

D.D.H. LOCATION MAP

STATEMENT OF EXPENDITURES

STATEMENT OF QUALIFICATIONS

D.D.H. SECTIONS D.D.H. 80-1 - 80-5

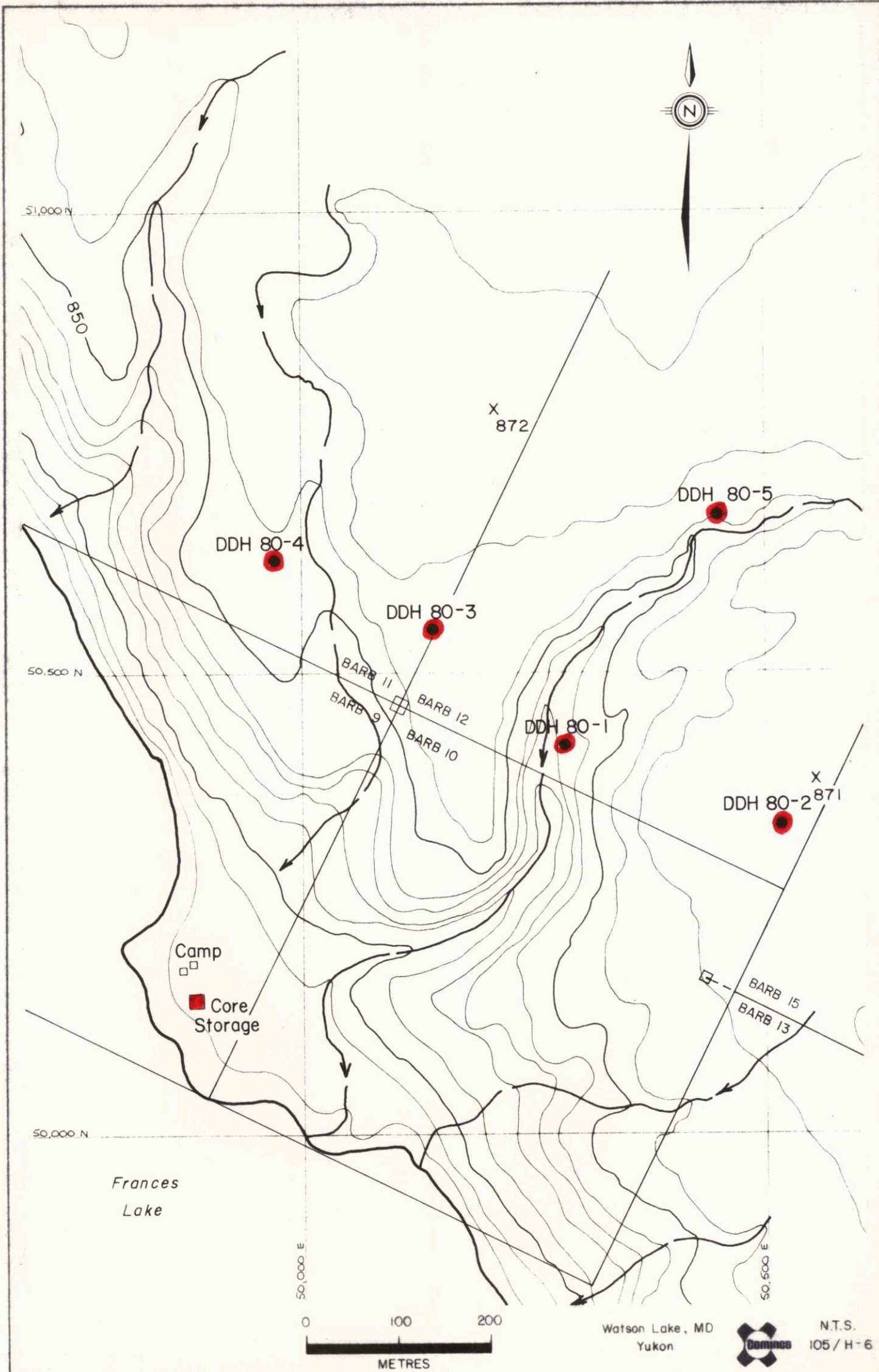
D.D.H. LOGS D.D.H. 80-1 - 80-5



BARB PROPERTY Location Map

Drawn by:		Traced by:	
Revised by	Date	Revised by	Date
ARM	Nov/80		

Scale: 1:300000 Apprx. Date: Nov/80 Plate:

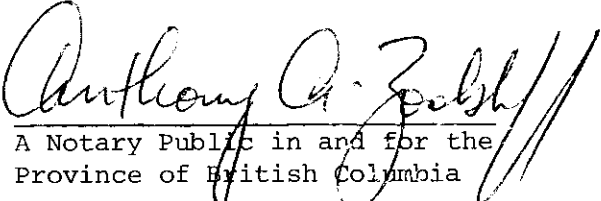


Drawn by:		Traced by: SAW	
Revised by	Date	Revised by	Date

BARB GROUP DDH LOCATION MAP

Scale: 1: 5000
Date: May 1980
Plate:

This is Schedule A referred to
in the Statutory Declaration
of ROBIN LAWSON WOODS
declared before me this ^{12th} day
of November, 1980


A Notary Public in and for the
Province of British Columbia

STATEMENT OF EXPENDITURES


BARB PROPERTY

WATSON LAKE M.D., YUKON

JANUARY 1, 1980 TO OCTOBER 31, 1980

Geology	\$ 26,497
Diamond drilling	153,591
Transportation	24,706
Access	19,736
Camp costs	4,005
Tenure	9,044
Communications	1,674
Administrative services	23,925
	<hr/>
	\$263,178
	<hr/> <hr/>

Cominco Ltd.
Vancouver Office
November 12, 1980
Copies: Mining Recorder (2)
Senior Technician
File (2)



Robin Lawson Woods
Supervisor, Exploration
& Foreign Accounting

C A N A D A
YUKON TERRITORY
TO WIT:


STATUTORY DECLARATION

I, ROBIN LAWSON WOODS, of the District of North Vancouver, in the Province of British Columbia, DO SOLEMNLY DECLARE THAT:

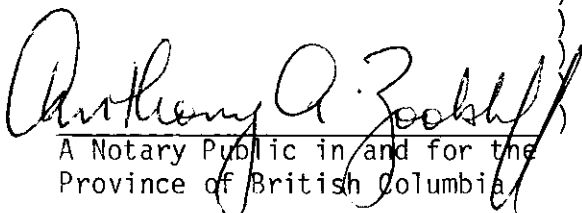
1. I am the Supervisor, Exploration and Foreign Accounting for Cominco Ltd., 2300 - 200 Granville Street, Vancouver, British Columbia, and, as such have knowledge of the facts deposed to herein.
2. Attached to this Statutory Declaration, as Schedule A, is a statement of expenditures indicating the expenditures charged by Cominco Ltd. to the Barb Property account for the period January 1, 1980 to October 31, 1980.
3. The statement of expenditures referred to in paragraph 2 is true and accurate to the best of my knowledge, information and belief.
4. This Statutory Declaration is made in support of an application for a Certificate of Work pursuant to the Yukon Quartz Mining Act.

AND I make this solemn declaration conscientiously believing it to be true and knowing that it is of the same force and effect as if made under oath and by virtue of the Canada Evidence Act.

DECLARED before me at the City)
of Vancouver in the Province)
of British Columbia, this *12th*)
day of *November* 198*0*)



Robin Lawson Woods




A Notary Public in and for the
Province of British Columbia

STATEMENT OF QUALIFICATIONS

I, D.W. Heddle, Assistant Manager, for Cominco Ltd., Exploration, Western District of 409 Granville Street, Vancouver, British Columbia, hereby declare that Mr. A.B. Mawer has supervised the field work and written the assessment report for the diamond drill holes 80-1 - 80-5 of the Barb Group property, Watson Lake Mining Division, Yukon Territory.

Mr. Mawer, Senior Geologist, has been working for Cominco Ltd. in mineral exploration for the past 25 years.

I consider him to be a competent geologist who is well qualified to perform work described in this assessment work report.


D.W. HEDDLE, P.Eng.
Assistant Manager
Exploration, Western District

- 850

DDH - 80 - 1

- 80°
180° A.Z.
10+40 E / 11+85 S

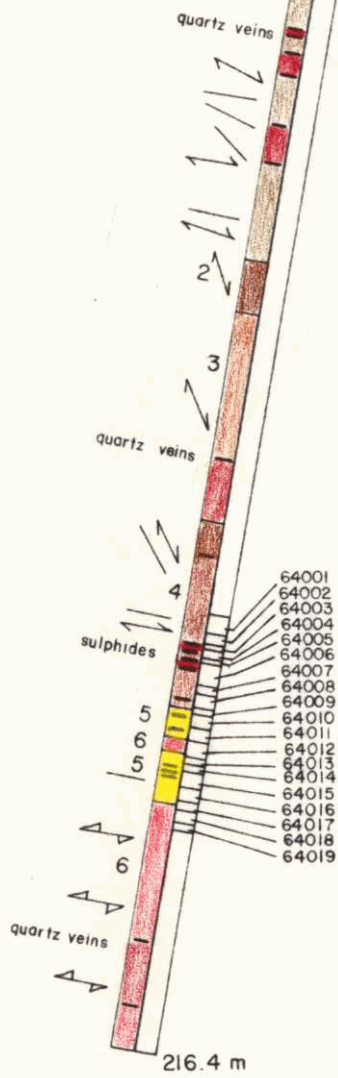
- 800

- 750

- 700

ELEVATION (m) A.S.L. (by Altimetre)

- 650



ASSAY NUMBERS

- Bedding
- ↗ Foliation
- ↘ Schistosity
- 1 Grey phyllite
- 2 Dark grey-green phyllite
- 3 Grey-green finely lam. phyllite
- 4 Light grey-green banded phyllite
- 5 Tuffaceous sediments
- 6 Quartz-sericite schist
- Quartz vein
- Sulphides



Drawn by:	DLM	Traced by:	SAW
Revised by:	Date	Revised by:	Date
		<i>P. m. f.</i>	<i>Sept 4, 1980</i>

BARB PROPERTY
DDH - 80 - 1
NORTH-SOUTH SECTION (looking west)

Scale: 1:100

Date: April / 80

Plate:

DDH 80-2

Elev. 860.2m.

Bearing 180°, Dip -80°

SOUTH

NORTH

Overburden

850 m

Grey Banded
Phyllite

800 m

Dark Grey Phyllite

750 m

700 m

Lighter Grey Phyllite
Poor Laminations

650 m

Laminated
Phyllite

Tuffaceous
Sediments

Banded
Phyllite
Sulphides

003 Ag, 03Au, 01Pb, 02 Zn
25.2 m

Quartz-Sericite Schist
(Crystal Tuff)

002 Ag, 03Au, 02 Pb, 14 Zn
8 m.

600 m

277.3m



ALM
105 H/6

Drawn by: DLK		Traced by: ALM	
Revised by	Date	Revised by	Date

BARB PROPERTY

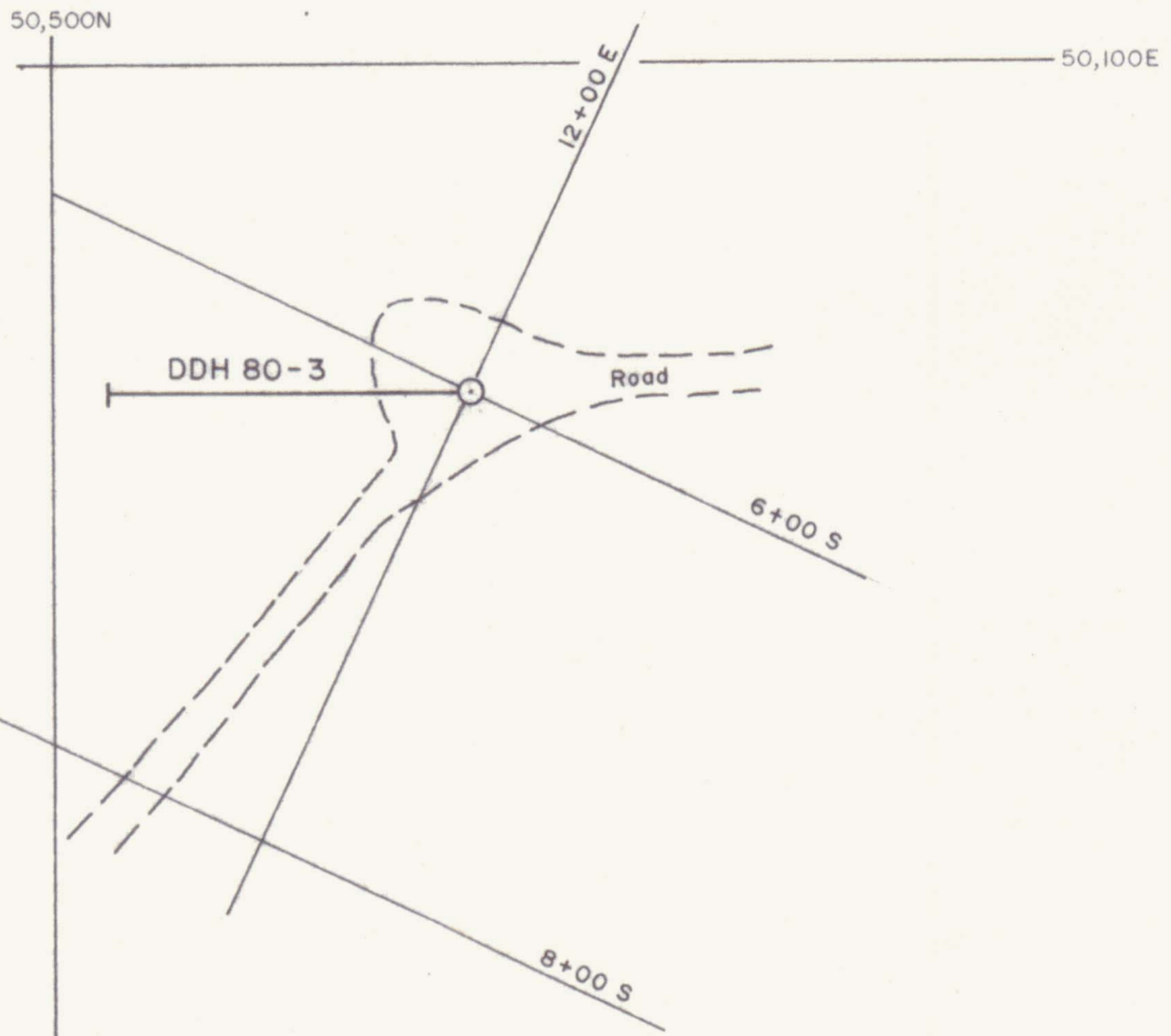
DDH 80-2

NORTH-SOUTH SECTION (Looking west)

Scale: 1:1000

Date: NOVEMBER 1980

Plate:

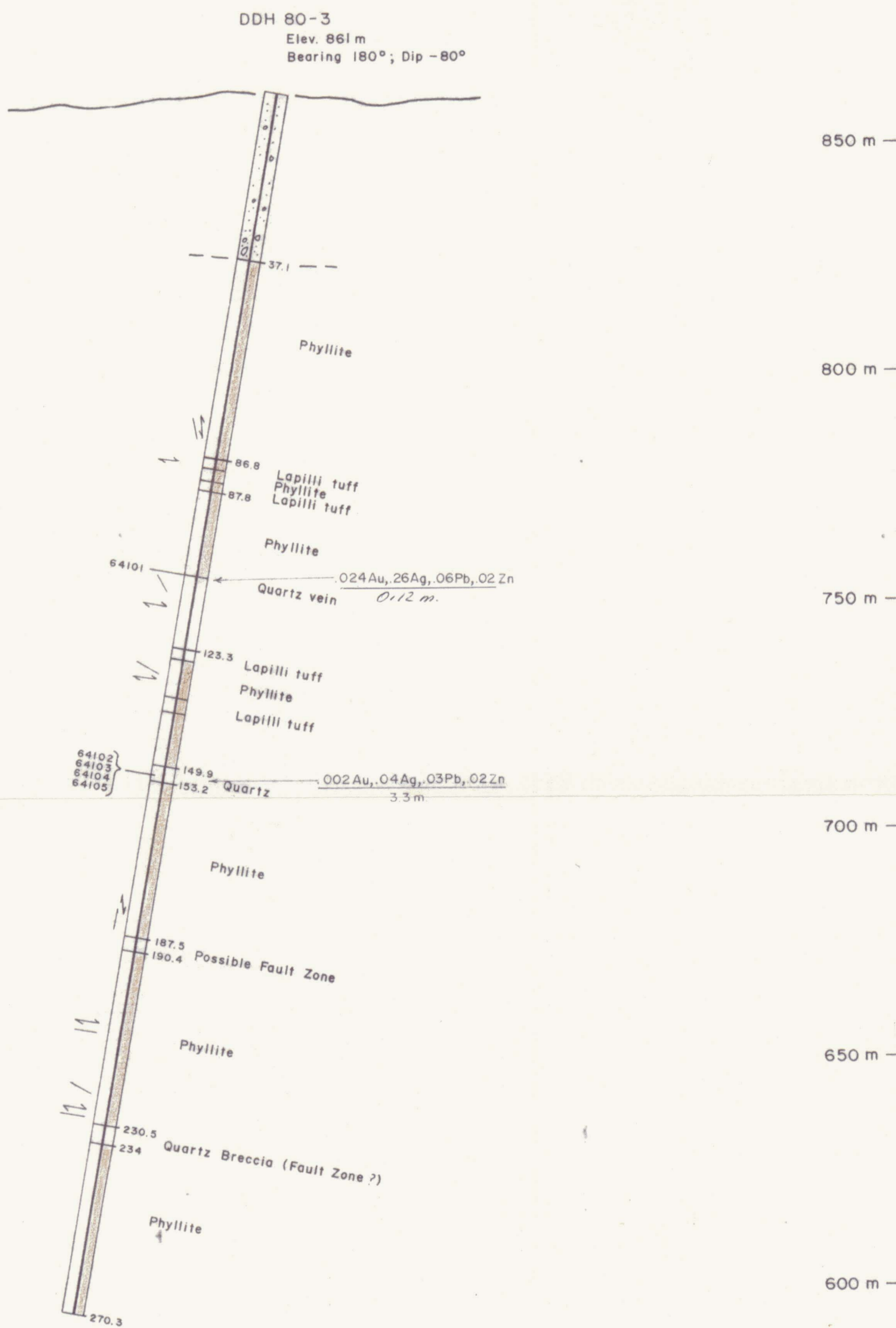


PLAN

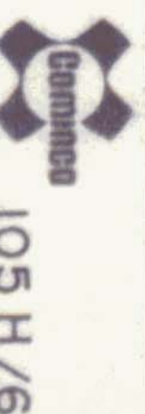
SECTION

SOUTH

NORTH



BARB PROPERTY



105 H/6

AB02

Drawn by: ALM
Revised by: Date

Traced by: PMA
Revised by: Date

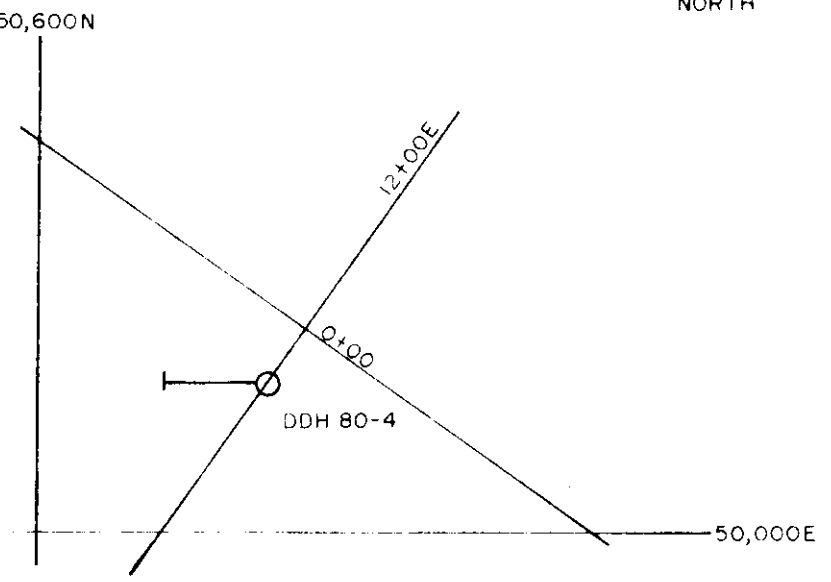
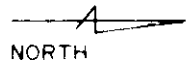
DDH 80-3
NORTH-SOUTH SECTION
(Looking west)

Scale: 1:1000

Date: MAY, 1980

Plate:

50,600N

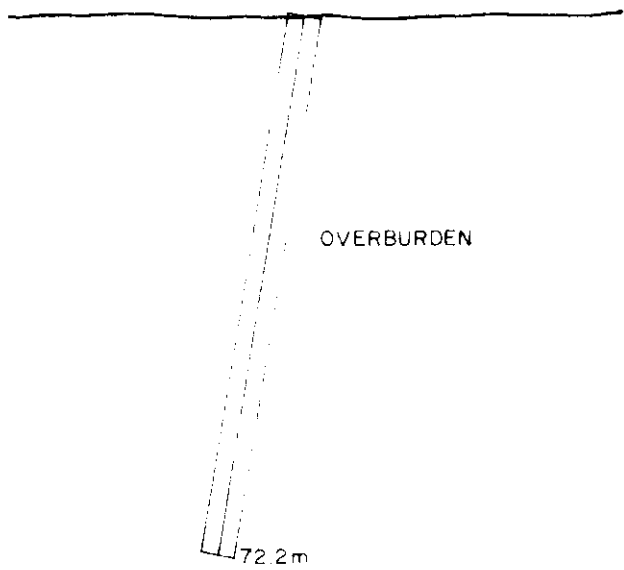


SOUTH

DDH 80-4

Elev. 847.3m
Bearing 180°, Dip -80°

NORTH



850m

800m

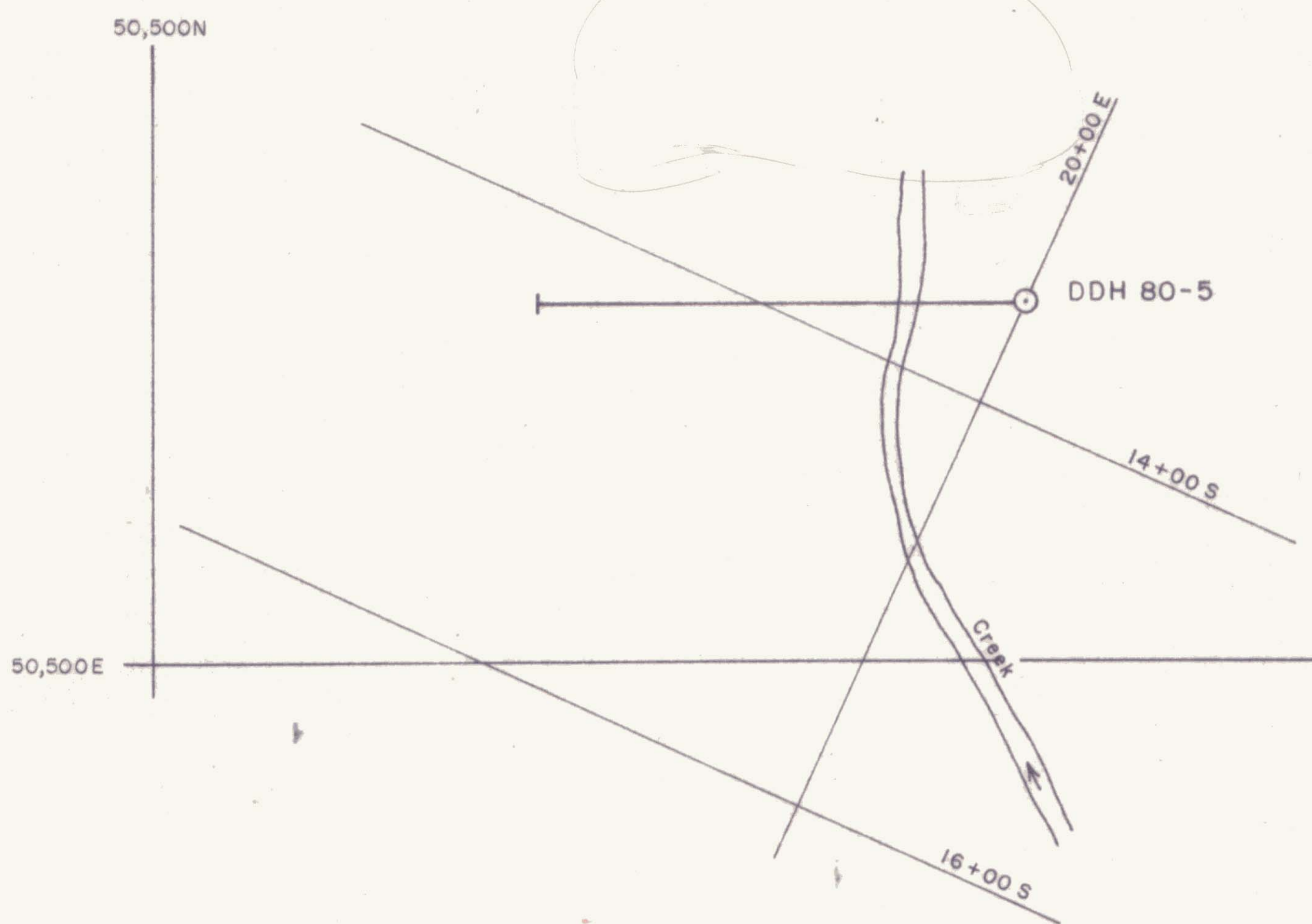
750m



Drawn by: ALM		Traced by: ALM	
Revised by	Date	Revised by	Date

BARB PROPERTY
DDH 80-4
NORTH-SOUTH SECTION (Looking west)

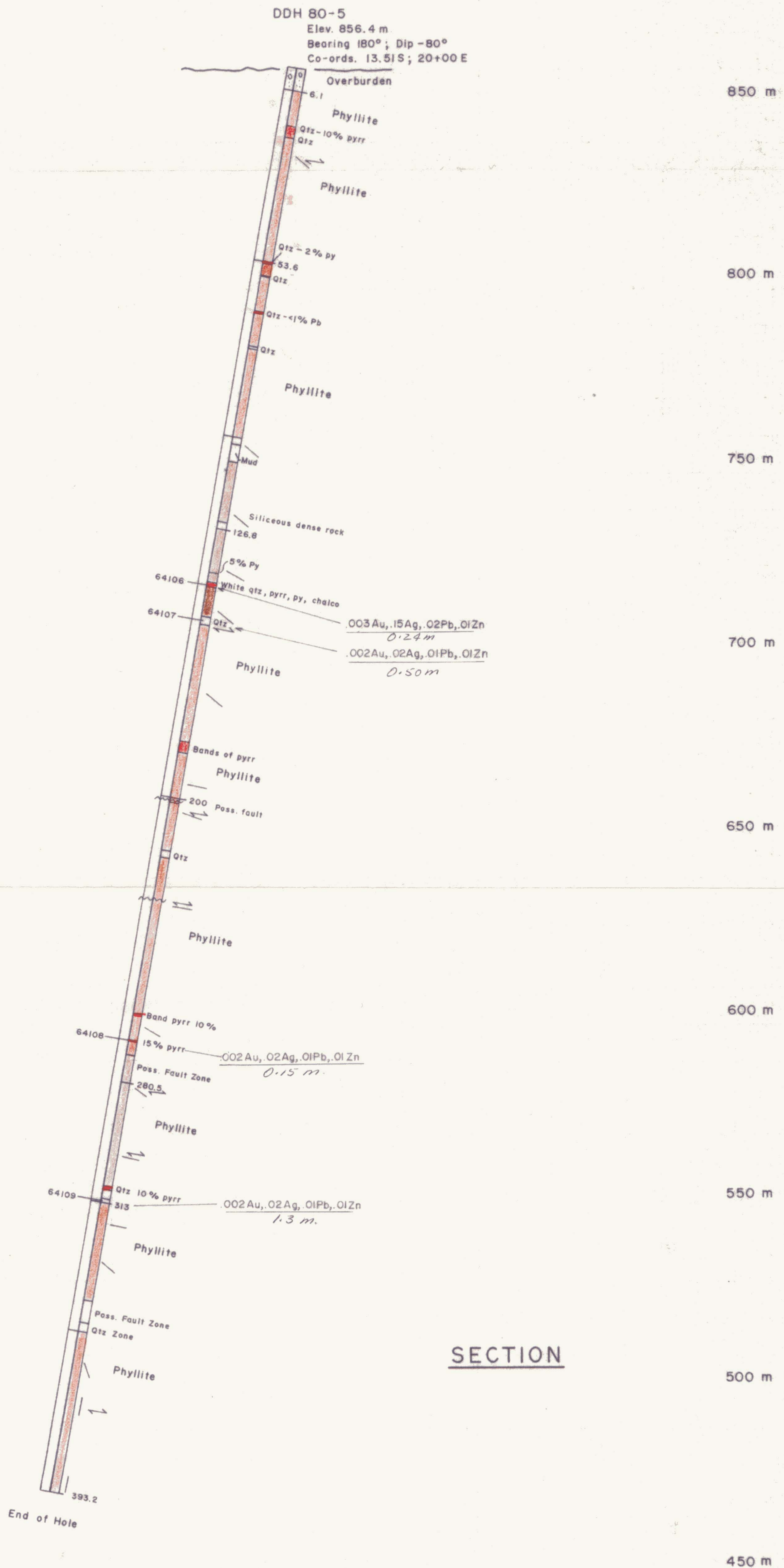
Scale: 1:1000 Date: NOVEMBER 1980 Plate:



PLAN

SOUTH

NORTH



SECTION

BARB PROPERTY



105 H/6

Drawn by: ALM

Traced by: *[Signature]*

Revised by: Date

Revised by: Date

DDH 80-5

NORTH - SOUTH SECTION

(Looking west)

Scale: 1:1000

Date: MAY, 1980

Plate:

[Signature]

Drill Hole Record



Property	BARB	District	WATSON LAKE, M.D.	Hole No.	80-1
Commenced	April 1, 1980	Location	East Arm Francis Lake	Tests at	Hor. Comp. 37.6 m
Completed	April 7, 1980	Core Size	NQ	Corr. Dip	Vert. Comp. 213.11 m
Co-ordinates	10+40E 11+85S			True Brg.	180°AZ
Objective	Matt Zone			% Recov.	75
					Date April 8, 1980

Claim BARB 12

T Brg. 180°

Collar Dip -80

Elev. 838.4 m

Length 216.4 m

Hole No. 80-1

Sheet

From	To	Description	Sample No.	Length	Analysis
0	6	Overburden			
6	110.2	Grey phyllite			
		Light to medium grey, locally green grey; fine to very fine grain with silty laminae in sections, 1-3 mm thick, usually carrying fine pyrite or pyrrhotite. Foliation varies from intense to faint in more siliceous massive sections unit contains several .5-2 mm mud seams or gouge zones; fine sub-euhedral pyrite .05-1 mm as common. Unit also contains several quartz-siderite seams with minor chlorite and associated pyrite/pyrrhotite.			
6.0-6.7		Fine grain, medium grey, with light colored silty laminae at 50° to core which are barely rolled into augen or boudin like blebs. Trace fine pyrite blebs along foliation parallel to bedding.			
6.7-6.8		Quartz seam, minor chlorite and pyrite.			
9.0-15.9		Ground core/gouge			
18.3-18.9		Well laminated, siliceous laminae, 1-2 mm thick at 40° to core, well developed foliation, slightly wavy at 75° to core.			
19.0-22.5		very finely laminated, .2 mm thick at 80° to core, contain fine pyrite foliation parallel to core.			
22.5-22.6		Mud/gouge			
23.1		5 cm quartz + chlorite band			
24.3-26.7		Light colored silty bands 2 mm thick at 80° to core are pinched swelled, trace pyrrhotite.			
27.2-28.4		Ground core			
30.2-31.1		Gouge			
31.3-34.4		Fine massive, foliation 5°-18° to core.			

Drill Hole Record



Property	BARB	District	Hole No.
Commenced		Location	Tests at
Completed		Core Size	Hor. Comp.
Co-ordinates			Vert. Comp.
Objective			Logged by
			Date
			% Recov.

Claim
BARB 12

T Brg.

Collar Dip

Elev.

Length

Hole No. Sheet

Footage From	Metre To	Description	Sample No.	Length	Analysis						
34.5		Dark grey beds, 25° to core with 1-1.5% fine pyrite, foliation at 20°.									
34.5-38.5		Fine grain, grey, poor bedding, foliation 20° to core, fine pyrite parallel to foliation few elongate blebs of pyrrhotite.									
39.5-44.5		Mud/gouge.									
44.5-44.8		Very fine grain, .5 mm laminations 15° to core, 2% fine pyrite.									
44.8-46.3		- Mud/gouge									
46.3-47.5		Well foliated, darker grey, beds resistant to foliation pinched and swelled at 30° to core, trace chalcopyrite in thicker laminations.									
48.0-48.9		Darker beds, .2-1cm. very fine grain at 15° to core rock dark grey-green.									
48.9-56.9		Mud/gouge									
57.9-59.6		Fine grain, well foliated, pale green laminations at 70° to core.									
61.5063.2		Faint color banding at 80° to core, strong foliation at 40° to core.									
63.3		7 cm quartz stringer, minor chlorite with .5% pyrrhotite.									
63.3-70.1		Gouge									
79.5		5 cm shatter zone healed by quartz and pale siderite, talc and sericite developed adjacent to this.									
79.5-80.5		Massive, dark grey green, well developed crenulated foliation.									
80.5-81.0		Quartz seam, minor chlorite and pyrrhotite.									
82.4		7 cm quartz-chlorite seam with adjacent talc development.									
85.4-85.9		Slightly coarser grained, foliation at 70° to core.									
85.9-86.0		Barren quartz seam									
86.0-87.1		Fine grained, pinched silty beds, 1-2 mm thick at 80° to core, foliations at 60°.									

Drill Hole Record



Property BARB District Hole No. 80-1

Commenced Location Tests at Hor. Comp.

Completed Core Size Corr. Dip Vert. Comp.

Co-ordinates True Brg. Logged by

Objective % Recov. Date

 Claim
BARB 12

T Brg.

Collar Dip

Elev.

Length

Hole No. Sheet

Footage		Description	Sample No.	Length	Analysis					
From	To									
88.0	91.3	Fine-medium grained, well foliated, terminating siliceous bands parallel to foliation at 80° to core.								
91.3	91.4	Quartz seam, minor chlorite and pyrrhotite.								
91.4	92.9	Well foliated, dark grey very fine grain 2 mm beds at 55° to core cross cut by foliation at 60° to core.								
92.9	93.7	Gouge								
93.7	96.0	Strong foliation at 90°, beds at 50°.								
97.1	97.6	Slightly shattered quartz seam, chlorite healed. 1-2% pyrrhotite and trace galena associated with chlorite.								
97.6	101	Massive, foliation at 75° to core.								
101	103.6	Finer grained light grey siliceous beds, 1-2 mm thick, locally rolled thicker at 85° to core, foliation at 30° to core.								
103.6	110.2	More massive, dark grey green, foliation at 35° to core.								
110.2	117.0	Dark grey green phyllite. Fairly massive, contains a few 3-10 cm paler green fine grain layers, maybe thin ash layers of intermediate composition.								
110.2	110.3	Light green layer at 48° to core, foliation at 30° to core.								
117.0	145.6	Medium grey green finely laminated phyllite. Fine grained, fine laminations, .2-.5 mm thick, roughly parallel to foliation contact gradational. Unit gets darker towards base, contains rare irregular pale green chlorite-quartz stringers.								

Drill Hole Record



Property	BARB	District	Hole No.	Claim	T Brg.	Collar Dip	Elev.	Length	Hole No.	Sheet
Commenced		Location	Tests at	BARB 12						
Completed		Core Size	Corr. Dip	BARB 12						
Co-ordinates			True Brg.	BARB 12						
Objective			% Recov.	BARB 12						
				BARB 12						
From	To	Description	Sample No.	Length	Analysis					
145.6-148.1		Fine grain, medium green with paler green bands parallel to foliation at 30°.								
148.1-148.2		Silicified breccia zone, .1-.5 cm. sub-euhedral pyrite crystals.								
152.0		2-4 mm. Pale greenish white siliceous band, 5-7% pyrrhotite parallel to foliation at 20°.								
154.0-155.0		Finely laminated, medium green, 1% pyrite, foliation 5-10° to core.								
155.0-159.6		Medium-fine laminations lighter green appears more tuffaceous	157.2 - 159.5	64001	2.3 m	0.010	0.03	0.01	<0.01	
159.6-154.7		Quartz seam containing contorted chunks of pyritic phyllite.								
159.7-161.0		Finely laminated, greenish grey, bedding parallel to foliation at 80-90° to core	159.5 - 161.0	64002	1.5 m	<0.002	0.02	0.01	<0.01	
161.1		7 cm pyrrhotite band, 90% Po, 10% quartz.	161.0 - 161.5	64003	0.5	<0.002	0.33	0.03	0.01	
162.7-162.8		Mineralized quartz seam, contains broken pieces of phyllite containing sulphide,	161.6 - 162.7	64004	1.2	<0.002	0.02	0.01	0.01	
		2% liver coloured sphalerite in quartz. .5% galena, .5% chalcopyrite.	162.7 - 163.2	64005	0.5	<0.002	0.36	0.26	0.01	
162.0-162.9		Interbedded phyllite and fine sulphides .6-.8 cm thick, 99% Po, Py, trace galena, arsenopyrite.								
163.9		.4 cm pyrite bed	163.2 - 166.7	64006	3.5	0.002	0.02	0.01	0.01	
168.2		.7 cm pyrrhotite bed	166.7 - 167.7	64007	1.0	0.003	0.02	0.01	0.01	
			167.7 - 169.7	64008	2.0	<0.002	<0.02	<0.01	<0.01	
170.0-180.3		Tuffaceous sediments	169.7 - 170.7	64009	1.0	<0.002	<0.02	<0.01	<0.01	
		Fine to very fine grained, pale drab green to dark grey green, locally well banded with light green very fine grain beds, contains a 1.5 m section of coarse grained quartz-sericite schist,(crystal tuff), several small sulphide rich beds containing mainly pyrrhotite.								
170.4-170.5		5% pyrrhotite, .2% very fine arsenopyrite.	170.7 - 172.0	64010	1.0	0.05	0.02	0.01	<0.01	

Drill Hole Record



Property	BARB	District	Hole No.
Commenced		Location	Tests at
Completed		Core Size	Hor. Comp.
Co-ordinates		True Brg.	Vert. Comp.
Objective		% Recov.	Logged by
			Date

Claim
BARB 12

T Brg.

Collar Dip

Elev.

Length

Hole No.
Sheet

Footage From To	Metres	Description	Sample No.	Length	Analysis			
					Ag	Au	Pb	Zn
170.9		5 cm siliceous zone. Barren						
171.9-175.0		Fine grain, drab green, possibly felsic ash, poorly laminated at 40° to core, small zones contain 3-4% pyrrhotite.						
175.7-176.2		Gradational contact into a pale greenish white, coarse grained quartz-sericite schist.						
			174.0 - 176.0	64012	2.0	0.002	0.03	0.01
176.2-178.0		Medium grained, well banded, at 85-90° to core at 177.4 - 10 cm sulphide band, 40% Po, 10% py,						
			176.0 - 177.0	64013	1.0	0.003	0.05	0.05
			177.0 - 178.0	64014	1.0	0.003	0.28	0.30
178.1		Silicified zone, .2% sphalerite, trace galena.						
			178.0 - 180.0	64015	2.0	0.004	0.03	0.01
179.8		Bedding, at 90° penetrating foliating at 45° to core.						
183.0-216.4		Quartz-sericite schist (Crystal Tuff?) Top of unit is very fine grained and poorly foliated, drab olive green in color, with darker green bands, unit gets gradationally coarser into the pale greenish white schistose rock containing approximately 20% crystals, locally contains up to 1% pyrrhotite/pyrite and a trace of sphalerite. Foliation is crenulated 80-90° to core.						
183.-185.0		Very fine grained, drab green, contains rare blebs of pyrrhotite						
			180.0 - 182.0	64016	2.0	0.002	0.02	0.01
185.0-200		Grading into coarser schist with higher crystal content and stronger development of micaceous minerals.						
			182.0 - 183.0	64017	1.0	0.002	0.02	0.01
			183.0 - 185.0	64018	2.0	0.002	0.02	0.01
200.1		Barren quartz seam.						
			185.0 - 186.0	64019	1.0	0.003	0.04	0.01
200.8-209.7		Pale greenish white, homogenous, very schistose, locally crenulated, 80-90° to core.						
209.7-210.1		White quartz seam, minor chlorite, trace pyrrhotite.						

Drill Hole Record



Property	BARB	District	Hole No.
Commenced	Location	Tests at	Hor. Comp.
Completed	Core Size	Corr. Dip	Vert. Comp.
Co-ordinates	True Brg.	Logged by	
Objective	% Recov.	Date	

Claim
BARB 12

T Brg.

Collar Dip

Elev.

Length

Hole No.
Sheet

From Metres From	To Metres To	Description	Sample No.	Length m	Analysis							
					Ag	Au	Pb	Zn				
210.1-216.4		Massive quartz sericite schist.										
216.4		END OF HOLE.										
<u>LIST OF SAMPLING</u>												
					FROM	TO						
					157.2 -	159.5	64001	2.3	0.010	0.03	0.01	0.01
					159.5 -	161.0	64002	1.5	0.002	0.02	0.01	0.01
					161.0 -	161.5	64003	0.5	0.002	0.33	0.03	0.01
					161.5 -	162.7	64004	1.2	0.002	0.02	0.01	0.01
					162.7 -	163.2	64005	0.5	0.002	0.36	0.26	0.01
					163.2 -	166.7	64006	3.5	0.002	0.02	0.01	0.01
					166.7 -	167.7	64007	1.0	0.003	0.02	0.01	0.01
					167.7 -	169.7	64008	2.0	0.002	0.02	0.01	0.01
					169.7 -	170.7	64009	1.0	0.002	0.02	0.01	0.01
					170.7 -	172.0	64010	1.3	0.015	0.02	0.01	0.01
					172.0 -	174.0	64011	2.0	0.002	0.02	0.01	0.01
					174.0 -	176.0	64012	2.0	0.002	0.03	0.01	0.01
					176.0 -	177.0	64013	1.0	0.003	0.05	0.05	0.01
					177.0 -	178.0	64014	1.0	0.003	0.28	0.30	0.01
					178.0 -	180.0	64015	2.0	0.02	0.03	0.01	0.01
					180.0 -	182.0	64016	2.0	0.002	0.02	0.01	0.01
					182.0 -	183.0	64017	1.0	0.002	0.02	0.01	0.01
					183.0 -	185.0	64018	2.0	0.002	0.02	0.01	0.01
					185.0 -	186.0	64019	1.0	0.003	0.04	0.01	0.01

Drill Hole Record



Property	BARB	District	WATSON LAKE M.D.	Hole No.	80-1
Commenced	APRIL 1, 1980	Location	EAST ARM FRANCIS LAKE	Tests at	Hor. Comp.
Completed	APRIL 7, 1980	Core Size	NQ	Corr. Dip	Vert. Comp.
Co-ordinates	10+40E/11+85S	True Brg.	180 ⁰	Logged by	D.L. KURAN
Objective	MATT ZONE	% Recov.	75	Date	APR. 8/80

Claim

BARB 12

T Brg. 180⁰ AZCollar Dip
-80⁰

Elev. 838.4 m

Length 216.4 m

Hole No. Sheet

Footage From	Metres To	Description Core (m)	% Recovery	Sample No.	Length	Analysis							
6.0	7.5	1.5	100										
7.5	9.0	0.3	20										
9.0	10.8	0.5	27										
10.8	14.4	0.6	16										
14.4	15.0	0.25	41										
15.0	15.9	0.15	16										
15.9	16.8	0.40	44										
16.8	18.3	0.5	33										
18.3	18.9	0.6	100										
18.9	21.8	2.8	96										
21.8	23.7	1.0	52										
23.7	24.4	0.7	100										
24.4	26.1	0.95	55										
26.1	27.2	1.0	90										
27.2	28.1	6.4	44										
28.1	28.4	0.05	16										
28.4	30.2	0.8	44										
30.2	31.1	0.5	55										
31.1	32.1	1.0	66										
32.6	33.5	0.3	33										
33.5	34.1	0.5	83										
34.1	34.6	0.6	100										

Drill Hole Record



Property	BARB	District	Hole No.	80-1
Commenced	Location		Tests at	Hor. Comp.
Completed	Core Size		Corr. Dip	Vert. Comp.
Co-ordinates			True Brg.	Logged by
Objective			% Recov.	Date

Claim
BARB 12

T Brg.

Collar Dip

Elev.

Length

Hole No.
Sheet

Footage From	Metres To	Description Core (m)	% Recovery	Sample No.	Length	Analysis							
34.7	35.5	0.8	100										
35.5	36.3	0.7	87										
36.3	36.6	0.3	100										
36.6	38.5	0.80	42										
38.5	39.4	0.70	77										
39.4	41.2	0	0										
41.2	42.6	0.20	14										
42.6	43.2	0.30	50										
43.2	44.8	1.20	75										
44.8	46.3	1.30	86										
46.3	47.2	0.90	100										
47.2	48.9	1.50	88										
48.9	50.1	1.1	91										
50.1	53.0	0.1	5										
53.0	53.9	0.1	11										
53.9	55.9	0.6	30										
55.9	56.9	0.80	80										
56.9	57.9	0.50	50										
57.9	59.3	0.90	64										
59.3	59.6	0.30	50										
59.6	60.9	0.90	69										

Scale

Colour Plot
& Dips

Drill Hole Record



Property	BARB	District	Hole No.	80-1
Commenced	Location		Tests at	Hor. Comp.
Completed	Core Size		Corr. Dip	Vert. Comp.
Co-ordinates			True Brg.	Logged by
Objective			% Recov.	Date

Claim
BARB 12

T Brg.

Collar Dip

Elev.

Length

Hole No.
80-1Sheet
3

From	To	Description Core (m)	% Recovery	Sample No.	Length	Analysis					
60.9	61.5	0.25	41								
61.5	62.1	0.40	66								
62.1	63.0	0.90	100								
63.0	63.3	0.30	100								
63.3	68.5	2.80	54								
68.5	70.1	0.70	43								
70.1	71.6	1.10	73								
71.6	72.5	0.60	66								
72.5	74.9	1.20	50								
74.9	75.0	0.1	100								
75.0	78.9	2.40	61								
78.9	79.0	0.1	100								
79.0	80.1	1.1	100								
80.1	81	0.9	100								
81.0	82.0	0.20	20								
82.0	83.8	0.90	50								
83.8	84.4	0.6	100								
84.4	85.9	1.0	66								
85.9	87.1	1.2	100								
87.1	88.0	0.90	100								
88.0	88.8	0.50	62								

Drill Hole Record



Property	BARB	District	Hole No.	Claim	BARB 12	Collar Dip	Elev.	Length	Hole No.	Sheet
Commenced		Location	Tests at							
Completed		Core Size	Corr. Dip							
Co-ordinates			True Brg.							
Objective			% Recov.							
From	To	Description Core (m)	% Recovery	Sample No.	Length	Analysis				
88.8	89.6	0.70	87							
89.6	90.6	1.0	100							
90.6	91.4	0.8	100							
91.4	92.9	1.1	86							
92.9	93.7	0.8	100							
93.7	95.0	1.3	100							
95.0	96.0	0.40	40							
96.0	97.5	1.40	93							
97.5	99.0	1.25	83							
99	101.2	1.20	54							
101.2	102.7	1.30	86							
102.7	103.6	0.9	100							
103.6	104.5	0.6	66							
104.5	106.9	0.90	37							
106.9	108.2	0.50	38							
108.2	109.3	1.1	100							
109.3	111.0	1.7	100							
111.0	112.9	1.50	78							
112.9	114.9	2.0	100							
114.9	117.0	1.7	80							
117.0	119.2	2.2	95							
119.2	121.9	1.9	70							

Drill Hole Record



Property	BARB	District	Hole No.	
Commenced	Location		Tests at	Hor. Comp.
Completed	Core Size		Corr. Dip	Vert. Comp.
Co-ordinates			True Brg.	Logged by
Objective			% Recov.	Date

Claim
BARB 12

T Brg.

Collar Dip

Elev.

Length

Hole No.
Sheet

Footage From	Metres To	Description Core (m)	% Recovery	Sample No.	Length	Analysis						
121.9	124.9	3.0	100									
124.9	126.9	2.0	100									
126.9	129.5	2.6	100									
129.5	131.2	1.7	100									
131.2	133.2	2.0	100									
133.2	134.8	1.2	75									
134.8	136.5	1.7	100									
136.5	139.1	2.5	96									
139.1	140.8	1.6	94									
140.8	143.3	2.5	100									
143.3	145.4	2.0	95									
145.4	147.8	0.2	8									
147.8	149.6	1.8	100									
149.6	151.5	1.3	68									
151.5	152.2	0.7	100									
152.2	153.9	1.4	82									
153.9	155.4	1.5	100									
154.5	157.2	1.80	100									
157.2	159.7	2.3	92									
159.7	151.2	1.3	86									
161.2	162.1	0.7	77									

Drill Hole Record



Property	BARB	District	Hole No.
Commenced		Location	Tests at
Completed		Core Size	Hor. Comp.
Co-ordinates		True Brg.	Vert. Comp.
Objective		% Recov.	Logged by
			Date

Claim
BARB 12

T Brg.

Collar Dip

Elev.

Length

Hole No.
Sheet

From	To	Description Core (m)	% Recovery	Sample No.	Length	Analysis					
162.1	164.3	1.7	77								
164.3	167.4	3.0	83								
167.4	169.7	1.7	94								
169.7	170.9	1.2	100								
170.9	172.8	1.6	84								
172.8	174.0	0.8	66								
174.0	175.8	1.4	77								
175.8	176.7	0.9	100								
176.7	178.3	1.6	100								
178.3	181.2	2.9	100								
181.2	181.9	0.5	71								
181.9	185.0	3.1	100								
185.0	187.4	2.4	100								
187.4	190.5	3.1	100								
190.5	193.8	3.2	96								
193.8	197.2	2.8	82								
197.2	200.8	3.5	100								
200.8	201.7	1.1	100								
201.9	206.3	4.3	100								
206.3	209.0	2.6	96								
209.0	209.7	0.7	100								
209.7	210.3	0.6	100								

Scale

Com. Plot
& Dip

Drill Hole Record



Property	BARB	District	Watson Lake M.D.	Hole No.	80-2
Commenced	April 9, 1980	Location	East arm Francis Lake	Tests at	91.4 m, 182, 274 m
Completed	April 21, 1980	Core Size	NQ	Corr. Dip	75 ⁰ .45'
Co-ordinates	20+00S/11+00E	True Brg.	180 ⁰ AZ	Logged by	D. Kuran
Objective	"MATT ZONE"	% Recov.	87%	Date	April 17/80

Claim
BARB 12T Brg. 180⁰ AZCollar Dip -80⁰

Elev. 860.2 m

Length

277.3 m

Hole No. 80-2

Sheet 1

From	To	Description	Sample No.	Length	Analysis
0	14.9	Overburden			
14.9	42.0	BANDED PHYLLITE Medium green, grey to dark green/black locally, fine to medium-grained with very prominent bands. Bands are pale greenish white and very fine-grained or white silty siliceous bands. Bands constitute approximately 20% of rock. Thicknesses range from .5 mm - 2 cm, locally structurally thickened. Unit contains a 7 m section of finer grained non-banded phyllite. Unit contains variable, up to 5%, fine disseminated pyrite and minor pyrrhotite. Softer greenish bands or laminae may indicate volcanic derived sediment.			
	20.6	Bedding @ 90 ⁰ to core, foliation @ 75 ⁰ .			
	23.3	2 cm pale green band folded, axis 85 ⁰ to core.			
	24.5 - 28.0	Darker green, (chloritic?) bedding at 80 ⁰ , foliation at 90 ⁰ , contains very fine pyrite beds. About 2.5 cm apart.			
	30.5 - 33.5	Ground core			
	32.0 - 39.6	Very fine-grained massive phyllite, foliation 5 ⁰ to core, contains minor mud seams.			
	40.3 - 41.4	Banded phyllite with bands pulled into elongate blebs above and below a 7 cm massive quartz seam. Smaller quartz-carbonate development along relic bedding.			
	41.4 - 42.0	Drab greenish brown bed, contains .5 mm quartz and feldspar particles, slightly calcareous, (tuff bed?).			

213497

Drill Hole Record



Property	BARB	District	Hole No.	80-2
Commenced	Location	Tests at	Hor. Comp.	
Completed	Core Size	Corr. Dip	Vert. Comp.	
Co-ordinates		True Brg.	Logged by	
Objective		% Recov.	Date	

Claim

T Brg.

Collar Dip

Elev.

Length

Hole No. 80-2 Sheet 2

METRES		Description	Sample No.	Length	Analysis														
From	To																		
42.0	233.8	MEDIUM-DARK GREY PHYLLITE																	
		Fairly massive, well foliated. Contains sections of poorly-moderately well banded phyllite, bands are fine-grained to very fine-grained, pale grey green. 3-1.5 cm thick, slightly harder than rest of rock. Unit contains minor quartz seams and up to 5% fine disseminated pyrite, 5% of bands are off white and siliceous, generally thinner than grey-green bands. Unit gets lighter grey downward. Thicker, 5-15 cm beds of light grey, green material. May be volcanic material?																	
		42.0 - 45.4 Mud seam/gouge																	
		45.8 5 cm quartz-siderite seam, barren																	
		46.1 8 cm quartz-siderite seam, minor chlorite																	
		46.1 - 57.5 Massive, homogenous, dark green-grey, rare paler finer bands at 90°, foliation at 70° to core.																	
		57.5 Minor quartz stockwork, barren																	
		58.2 Secondary quartz squeeze, trace pyrrhotite																	
		58.9 - 59.8 Banded section - .5 - 1.2 cm pale green beds at 80-90° to core, foliation at 90°.																	
		59.8 - 64.6 Fine-grained, massive dark grey green, foliation 75-85° to core.																	
		64.6 - 65.8 Banded section, bands 95%, pale grey, .4 - 1 cm thick, rare white siliceous band, .2 - .4 cm thick at 80° to core, foliation at 85°.																	
		70.7 - 72.2 Brownish(?) grey, massive, 2-4% fine disseminated pyrite, foliation at 65° to core.																	

Drill Hole Record



Property	BARB	District	Hole No.	80-2
Commenced		Location	Tests at	Hor. Comp.
Completed		Core Size	Corr. Dip	Vert. Comp.
Co-ordinates			True Brg.	Logged by
Objective			% Recov.	Date

Claim

T Brg.

Collar Dip

Elev.

Length

Hole No. 80-2 Sheet 3

From	To	DESCRIPTION	Sample No.	Length	Analysis					
	76.0 - 76.3	Quartz seam, minor chlorite, siderite, trace pyrrhotite								
	76.3 - 76.8	Light grey massive band.								
	79.0 - 81.7	Poorly banded section. Fine light grey bands and rare 3-4 cm pale green (tuffaceous?) beds at 75° to core.								
	86.8 - 87.1	Banded section, fine grey bands, .5 cm thick, light grey-green, fine silt size beds 3-10 cm thick (tuffaceous) at 85° to core, foliation at 90.								
	87.15	10 cm quartz seam, minor chlorite and siderite, barren.								
	88.5 - 90.8	Dark grey-black, fine-grained, rare light grey bed, 5-7% fine pyrite, bedding 75, Fol.	80							
	95.3	7 cm quartz-chlorite seam, minor carbonate, trace pyrrhotite.								
	96.8	Bedding at 70°, foliation at 85°.								
	105.4	8 cm quartz-chlorite, minor pyrrhotite, trace liver coloured sphalerite.								
	110.1-110.2	Quartz-chlorite-siderite seam trace pyrrhotite								
	111.2-111.4	Quartz-chlorite seam. Bleb liver coloured sphalerite, trace pyrrhotite, foliation 85°.								
	115.0-115.2	Quartz seam, barren.								
	116.6-117.0	Slightly shattered, quartz healed.								
	119.0	10 cm quartz-chlorite seam.								
	119.6-120.0	5 cm - 15 cm quartz seams with intense chloritic alteration of dark grey phyllite.								
	122.0	Phyllite gradually getting light grey, few .5 cm pale green grey bands at 70° to core.								
	125.2	5 cm quartz seam, 2-3% pyrrhotite, adjacent chlorite development.								

Drill Hole Record



Property	BARB	District	Hole No.	80-2
Commenced		Location	Tests at	Hor. Comp.
Completed		Core Size	Corr. Dip	Vert. Comp.
Co-ordinates			True Brg.	Logged by
Objective			% Recov.	Date

Claim

T Brg.

Collar Dip

Elev.

Length

Hole No. 80-2 Sheet 4

METRES		Description	Sample No.	Length	Analysis					
From	To									
	125.5 - 126.2	Quartz-chlorite seam, minor siderite, 2-5% blebby pyrrhotite.								
	126.2 - 129.2	Medium grey, rare pale grey green bed. 3 cm thick, 85° to core, foliation at 70°.								
	129.2 - 129.3	Quartz-chlorite seam. 1% pyrite.								
	131.0 - 131.3	Quartz seam								
	132.5 - 132.8	Quartz-chlorite-siderite seam. Minor pyrite.								
	134.2	Brownish green bed, silty on top. Bedding and foliation at 70° to core.								
	136.2	10 cm pale greenish, fine-grained bed at 80°, foliation at 60°, phyllite lighter grey.								
	136.2 - 142.0	Phyllite lighter grey, contains more numerous 3-15 cm beds of fine green grey (tuffaceous?) material, carrying up to 2% pyrrhotite.								
	143.2	Phyllite black to dark grey, occasional pale grey bed at 60° to core. Foliation at 80-90°.								
	154.5	1 cm bed, 85% pyrrhotite, 15% pale greenish grey material. Bedding at 65°, foliation at 80° to core.								
	160.0 - 166.7	Phyllite containing more numerous 1-3 mm white bands, rarely carrying fine pyrrhotite, whole rock sulphide content <.5%, bedding at 70°, foliation 75°.								
	171.9 - 172.5	Minor quartz-chlorite stockwork, trace pyrrhotite, phyllite getting lighter grey in colour down hole, (higher ash content?)								
	173.2	7 cm quartz seam, 1% pyrite.								
	182.8	Silty band at 65° to core, foliation parallel.								

Drill Hole Record



Property	BARB	District	Hole No.	80-2
Commenced		Location	Tests at	Hor. Comp.
Completed		Core Size	Corr. Dip	Vert. Comp.
Co-ordinates			True Brg.	Logged by
Objective			% Recov.	Date

Claim
T Brg.
Collar Dip
Elev.
Length
Hole No. 80-2 Sheet 5

From	To	Description	Sample No.	Length metres	Analysis			
					Ag	Au	Pb	Zn
	188.0	12 cm pale drab green, very fine-grained bed, (tuffaceous)?						
	193.8 - 194.5	Phyllite, pale greenish grey, 2-5% fine pyrrhotite, trace fine brown sphalerite?						
	197.5 - 201.0	Poorly laminated, 85° to core, locally contorted, containing 10-15% pyrrhotite with trace of chalcopyrite.						
	206.0	Laminations, very thin, .5 mm, 90° to core, foliation 80° to core.						
	207.2 - 207.3	Quartz-chlorite stockwork, barren.						
	214.5	5 mm silty band, 5% pyrrhotite, bedding, 80°, foliation, 75° to core.						
	218.3	7 cm bed, 85% pyrrhotite, 15% phyllite, phyllite whole rock sulphide content 22% pyo.						
	224.3	8 cm quartz-siderite-chlorite seam, 3-5% pyrrhotite, trace liver coloured sphalerite.						
	226.3	1 cm siderite band, 10% pyrrhotite, bedding 90°, foliation 60°.						
	230.4	Laminations at 45°, parallel to foliation	229.8 - 230.8	64020	1.0 m	0.002	0.02	0.01
	231.1	8 cm siderite-quartz bulge, 10% pyrrhotite, 5% pyrite	230.8 - 232.0	64021	1.2 m	0.002	0.02	0.01
	233.1 - 233.5	Quartz rich zone, 1% pyrrhotite, 3% pyrite	232.0 - 233.0	64022	1.0 m	0.002	0.02	0.01
			233.0 - 234.0	64023	1.0 m	0.002	0.02	0.01
	233.8 - 241.5	BANDED PHYLLITE (MATT ZONE)						
		Unit contains banded sulphides, pyrite-arseno bands are the most common, thin quartz sphalerite bands are also present. Pyrrhotite seems to decrease as pyrite increases with arseno. Bands are fine white material or sulphides with composition varying from 0-100% sulphides. They are						

Drill Hole Record



Property	BARB	District	Hole No.	80-2
Commenced		Location	Tests at	Hor. Comp.
Completed		Core Size	Corr. Dip	Vert. Comp.
Co-ordinates			True Brg.	Logged by
Objective			% Recov.	Date

Claim

T Brg.

Collar Dip

Elev.

Length

Hole No. 80-2 Sheet 6

From	To	Description	Sample No.	Length metres	Analysis			
					Ag	Au	Pb	Zn
		usually .3 - 2 cm thick but range up to an 18 cm coarse recrystallized pyrite bed. Bands are interbedded with light grey phyllite bands of roughly the same thickness. Unit contains few 5-20 cm quartz seams with pyrite and minor pyrrhotite.						
233.8 - 239.3		Bands are >60% white material, <4% sulphide, mainly pyrite, minor Sp, Ga, AsPy						
293.3 - 241.5		Bands are >80% sulphide, <20% white material, galena, pyrite arsenopyrite may be some jamesonite?						
233.4		Quartz-siderite sweat, trace pyrite						
233.85-233.95		Quartz seam, minor siderite and chlorite. 3-5% pyrite.						
234.0-234.1		Fine white laminae and quartz sweat, 2% pyrite and 5% fine arsenopyrite.						
			237.0-235.0	64024	1.0	0.002	0.02	0.01
234.1 - 334.5		Grey banded phyllite, several silt/pyrite beds up to 3 cm thick, trace arseno.						
234.56		4 mm bed with 80% brown sphalerite, 5% pyrite.						
234.56-234.9		Bands are white, up to 3 mm thick with 2 cm pyrite beds.						
235.0		5 cm quartz seam minor pyrite bedding at 70°.	235.0-236.0	64025	1.0	0.002	0.03	0.01
235.18		Trace sphalerite	236.0-237.0	64026	1.0	0.002	0.02	0.01
235.2 - 238.6		Finely laminated, bands are <50% sulphide, contains 2 1-2 mm sphalerite beds at 263.32 and 236.38, bedding 80° to core.	237.0-238.0	64027	1.0	0.002	0.03	0.01
			238.0-239.0	64028	1.0	0.002	0.02	0.01
238.6 - 238.8		Quartz seam, 1% pyrite, trace pyrrhotite						
239.4 - 239.6		Quartz seam; minor chlorite, 5% pyrite, 3-5% brown pyrrhotite adjacent to phyllite.	239.0-240.0	64029	1.0	0.003	0.05	0.01

Drill Hole Record



Property	BARB	District	Hole No.	80-2
Commenced	Location	Tests at	Hor. Comp.	
Completed	Core Size	Corr. Dip	Vert. Comp.	
Co-ordinates	True Brg.		Logged by	
Objective	% Recov.		Date	

Claim	T Brg.	Collar Dip	Elev.	Length	Hole No. 80-2	Sheet 7
-------	--------	------------	-------	--------	---------------	---------

From	METRES To	Description	Sample No.	Length metres	Analysis			
					Ag	Au	Pb	Zn
	239.6 - 239.9	Interbedded phyllite and massive sulphide beds, .5-2.0 mm thick, sulphides segregated into pyrite-galena and galena arseno pyrite beds.						
	239.9	5 cm pyritic quartz-siderite seam						
	240. - 240.1	Quartz seam, barren.	240.0-240.5	64030	0.5	40.000	0.02	0.0140
	240.18	3-4 cm massive pyrite						
	240.3 - 240.45	Uniformly interbedded phyllite and galena-arseno pyrite beds 2-3 mm thick.						
	240.45-240.6	Quartz + mixture of phyllite and fine laminations of galena-arseno and pyrite.	240.5-241.0	64031	0.5	0.007	0.05	0.0140
	240.6 - 240.75	Massive pyrite						
	240.75- 240.9	Quartz seam, minor pyrite.						
	240.9 - 241.1	Very fine inter-laminations of phyllite and sulphide, 60% galena/arseno, 40% pyrite, bedding 85° to core.						
	241.5 - 249.0	LIGHT GREY, POORLY BANDED & LAMINATED PHYLLITE Unit is light to medium grey, contains rare siliceous white-medium grey bands. Minor pyrite and pyrrhotite bands, trace sphalerite in quartz sweat.						
	241.9 - 242.0	Quartz seam minor chlorite, siderite, pyrite	241.0-242.0	64032	1.0	40.000	40.02	40.0140
	242.0 - 243.2	Laminated grey phyllite, bedding at 75°, foliation at 85°, contains 1 cm pyrite bed.	242.0-243.0	64033	1.0	40.000	40.02	40.0140

Drill Hole Record



Property	BARB	District	Hole No.	80-2
Commenced		Location	Tests at	Hor. Comp.
Completed		Core Size	Corr. Dip	Vert. Comp.
Co-ordinates			True Brg.	Logged by
Objective			% Recov.	Date

Claim

T Brg.

Collar Dip

Elev.

Length

Hole No. 80-2 Sheet 8

From	METRES		Description	Sample No.	Length metres	Analysis			
	To					Ag	Au	Pb	Zn
	245.8		Siderite-quartz shatter, barren	64034	1.0	0.002	0.03	0.01	0.01
	247.2 - 247.4		Quartz-siderite zone, 1% coarse pyrite, trace very fine sphalerite.	64035	1.0	0.002	0.07	0.01	0.01
	248.9 - 249.0		Quartz sweats cross cutting, 2 mm siliceous bands carry .5% liver sphalerite and pyrite	64036	1.0	0.002	0.09	0.01	0.01
				64037	2.0	0.002	0.02	0.01	0.01
				64038	1.0	0.002	0.03	0.01	0.01
249.0 - 251.3			TUFFACEOUS SEDIMENTS						
			Very fine-grained, drab green in colour, locally poorly banded with 2-3 mm dark grey bands.						
			Unit contains up to 1% scattered 2-4 mm irregular brown pyrrhotite blebs and minor pyrite.						
	249.3		Bedding at 60° to core, foliation at 70°.	64039	2.0	0.002	0.03	0.01	0.01
251.3 - 277.3			QUARTZ SERICITE SCHIST (CRYSTAL TUFF?)						
(EOH)			Unit has a finer grain, medium grey top, grading into a light greenish grey schistose, coarser grain rock deeper in section. Top 6 m contains up to 5% .2 - .8 cm irregular brown pyrrhotite blebs. As well as up to 0.5(?) fine brown sphalerite.						
	251.3 - 252.3		Fine-medium-grained, light grey, schist. up to 5% pyrrhotite	64040	1.0	0.004	0.03	0.01	0.01
	242.3 - 253.0		Medium-light green-grey schist, 1-3% pyrrhotite blebs. 0.5% fine brown sphalerite	64041	1.0	0.002	0.03	0.01	0.01

Drill Hole Record



Property	BARB	District	Hole No.	80-2
Commenced		Location	Tests at	Hor. Comp.
Completed		Core Size	Corr. Dip	Vert. Comp.
Co-ordinates			True Brg.	Logged by
Objective			% Recov.	Date

Claim	T Brg.	Collar Dip	Elev.	Length	Hole No.
					80-2 Sheet 1

Footage		Description	Sample No.	Length m	Analysis			
From	To				Ag	Au	Pb	Zn
		LIST OF SAMPLING:						
		FROM TO						
		229.8 - 230.8		1.0	0.002	0.02	0.01	0.01
		230.8 - 232.0		1.2	0.002	0.02	0.01	0.01
		232.0 - 233.0		1.0	0.002	0.02	0.01	0.01
		233.0 - 234.0		1.0	0.002	0.02	0.01	0.01
		234.0 - 235.0		1.0	0.002	0.02	0.01	0.01
		235.0 - 236.0		1.0	0.002	0.03	0.01	0.01
		236.0 - 237.0		1.0	0.002	0.02	0.01	0.01
		237.0 - 238.0		1.0	0.002	0.03	0.01	0.01
		239.0 - 240.0		1.0	0.002	0.02	0.01	0.01
		240.0 - 240.5		0.5	0.003	0.05	0.01	0.01
		240.5 - 241.0		0.5	0.002	0.02	0.01	0.01
		241.0 - 242.0		1.0	0.007	0.05	0.01	0.01
		242.0 - 243.0		1.0	0.002	0.02	0.01	0.01
		243.0 - 244.0		1.0	0.002	0.02	0.01	0.01
		244.0 - 245.0		1.0	0.002	0.03	0.01	0.01
		245.0 - 246.0		1.0	0.002	0.07	0.01	0.01
		246.0 - 248.0		2.0	0.002	0.09	0.01	0.01
		248.0 - 249.0		1.0	0.002	0.09	0.01	0.01
		249.0 - 251.0		2.0	0.002	0.03	0.01	0.01
		251.0 - 252.0		1.0	0.002	0.03	0.01	0.01
		252.0 - 253.0		1.0	0.004	0.03	0.01	0.01

Scale

Colour Plot
& Dips

Drill Hole Record



Property	BARB	District	Watson Lake M.D.	Hole No.	80-2
Commenced	April 9/80	Location	East Arm Francis Lk.	Tests at	91.5m, 182m, 274 m
Completed		Core Size	NQ	Corr. Dip	
Co-ordinates	20+00S/11+00E			True Brg.	180 ⁰ az
Objective	MATT ZONE			% Recov.	87%
				Date	April 17/80

Claim
BARB 12T Brg.
180⁰ AZCollar Dip
-80⁰Elev.
860.2 m

Length

Hole No. 80-2 Sheet 1

From	To	Description	Sample No.	Length	Analysis
		<u>CORE</u>			
		<u>% RECOVERY</u>			
14.9 - 15.8		0.2		22	
15.8 - 17.3		0.3		16	
17.3 - 18.8		0.65		43	
18.8 - 20.4		0.60		37	
20.4 - 21.9		1.30		86	
21.9 - 23.1		1.20		100	
23.1 - 24.6		1.50		100	
24.6 - 26.5		0.6		31	
26.5 - 27.4		0.7		77	
27.4 - 29.2		1.6		88	
29.2 - 30.5		1.1		84	
30.5 - 32.0		0.1		6	
32.0 - 33.5		0.5		33	
33.5 - 36.5		1.2		40	
36.5 - 38.4		1.1		57	
38.4 - 39.6		0.3		25	
39.6 - 40.3		0.15		21	
40.3 - 41.4		0.9		81	
41.4 - 42.0		0.2		33	
42.0 - 45.7		1.7		45	
45.7 - 47.5		1.5		83	
47.5 - 49.3		1.2		66	

Scale

Colour Plot
& Dips

Drill Hole Record



Property	BARB	District	Hole No.	80-2
Commenced		Location	Tests at	Hor. Comp.
Completed		Core Size	Corr. Dip	Vert. Comp.
Co-ordinates			True Brg.	Logged by
Objective			% Recov.	Date

Claim

T Brg.

Collar Dip

Elev.

Length

Hole No. 80-2 Sheet 2

METRES		Description	CORE	% RECOVERY	Sample No.	Length	Analysis												
From	To																		
49.3	50.5		0.9	75															
50.5	53.3		3.8	100															
53.3	55.4		2.0	95															
55.4	57.3		0.9	47															
57.3	58.8		1.5	100															
58.8	61.8		3.0	100															
61.8	63.4		1.4	87															
63.4	65.8		2.3	95															
65.8	68.2		1.6	66															
68.2	69.1		0.15	16															
69.1	70.7		1.4	93															
70.7	72.2		1.4	87															
72.2	73.4		1.2	100															
73.4	74.0		0.6	95															
74.0	75.7		1.7	100															
75.7	79.0		3.2	96															
79.0	80.7		1.7	100															
80.7	82.2		1.5	100															
82.2	83.8		1.6	100															
83.8	85.5		1.6	97															
85.5	87.0		1.5	100															
87.0	88.5		1.5	100															

Scale

Colour Plot
& Dips

Drill Hole Record



Property	BARB	District	Hole No.	80-2
Commenced	Location		Tests at	Hor. Comp.
Completed	Core Size		Corr. Dip	Vert. Comp.
Co-ordinates	True Brg.		Logged by	
Objective	% Recov.		Date	

Claim

T Brg.

Collar Dip

Elev.

Length

Hole No. 80-2 Sheet 3

From	To	Description	CORE	% RECOVERY	Sample No.	Length	Analysis					
88.5	90.3		1.9	94								
90.3	90.8		0.5	100								
90.8	92.3		1.5	100								
92.3	93.8		1.5	100								
93.8	95.4		1.5	93								
95.4	96.9		1.5	100								
96.9	98.4		1.3	86								
98.4	99.6		1.2	100								
99.6	101.2		1.5	93								
101.2	102.7		1.5	100								
102.7	104.2		1.5	100								
104.2	105.7		1.5	100								
105.7	107.2		1.5	100								
107.2	108.8		1.5	93								
108.8	110.3		1.5	100								
110.3	111.8		1.5	100								
111.8	113.3		1.5	100								
113.3	114.9		1.5	93								
114.9	116.4		1.5	100								
116.4	117.9		1.5	100								
117.9	119.4		1.5	100								
119.4	121.0		1.6	100								

Scale

Colour Plot
& Dip

Drill Hole Record



Property	BARB	District	Hole No.	80-2
Commenced		Location	Tests at	Hor. Comp.
Completed		Core Size	Corr. Dip	Vert. Comp.
Co-ordinates			True Brg.	Logged by
Objective			% Recov.	Date

Claim

T Brg.

Collar Dip

Elev.

Length

Hole No. 80-2 Sheet 4

From	METRES To	Description	CORE	% RECOVERY	Sample No.	Length	Analysis						
121.0	122.5		1.5	100									
122.5	124.0		1.5	100									
124.0	125.5		1.5	100									
125.5	127.1		1.5	93									
127.1	128.6		1.5	100									
128.6	130.1		1.5	100									
130.1	131.6		1.3	86									
131.6	133.1		1.5	100									
133.1	134.7		1.4	87									
134.7	136.2		1.5	100									
136.2	137.7		1.5	100									
137.7	138.9		1.2	100									
138.9	140.5		1.6	100									
140.5	142.0		1.5	100									
142.0	143.5		1.5	100									
143.5	145.0		1.5	100									
145.0	146.6		1.5	93									
146.6	148.1		1.5	100									
148.1	149.6		1.5	100									
149.6	151.2		1.5	93									
151.2	152.7		1.5	100									
152.7	154.2		1.5	100									

Drill Hole Record



Property	BARB	District	Hole No.	80-2
Commenced	Location		Tests at	Hor. Comp.
Completed	Core Size		Corr. Dip	Vert. Comp.
Co-ordinates			True Brg.	Logged by
Objective			% Recov.	Date

Claim

T Brg.

Collar Dip

Elev.

Length

Hole No. 80-2 Sheet 5

METRES		Description	CORE	% RECOVERY	Sample No.	Length	Analysis								
From	To														
154.2	155.7		1.5	100											
155.7	157.2		1.5	100											
157.2	158.8		1.5	93											
158.8	160.3		1.3	28											
160.3	162.1		0.5	27											
162.1	163.6		1.5	100											
163.6	164.8		0.8	66											
164.8	165.2		0.2	50											
165.2	166.7		1.5	100											
166.7	169.1		2.0	83											
169.1	171.1		1.8	90											
171.1	172.5		1.3	92											
172.5	174.0		1.5	100											
174.0	175.5		1.5	100											
175.5	177.0		1.5	100											
177.0	178.6		1.5	93											
178.6	180.1		1.5	100											
180.1	181.6		1.5	100											
181.6	183.1		1.5	93											
183.1	185.0		1.5	78											
185.0	186.5		1.5	100											
186.5	188.0		1.5	100											

Scale

Colour Plot
& Dips

Drill Hole Record



Property	BARB	District	Hole No.	80-2
Commenced		Location	Tests at	Hor. Comp.
Completed		Core Size	Corr. Dip	Vert. Comp.
Co-ordinates			True Brg.	Logged by
Objective			% Recov.	Date

Claim

T Brg.

Collar Dip

Elev.

Length

Hole No. 80-2 Sheet 6

METRES From To	Description	CORE	% RECOVERY	Sample No.	Length	Analysis				
188.0 - 189.5		1.5	100							
189.5 - 191.1		1.6	94							
191.1 - 192.9		0.9	50							
192.9 - 194.4		1.5	100							
194.4 - 197.5		2.7	87							
197.5 - 199.5		2.0	100							
199.5 - 202.0		2.3	92							
202.0 - 204.2		2.1	95							
204.2 - 206.3		2.0	95							
206.3 - 209.0		2.7	100							
209.0 - 212.1		3.1	100							
212.1 - 215.1		3.0	100							
215.1 - 218.2		3.1	100							
218.2 - 221.2		3.0	100							
221.2 - 224.3		3.1	100							
224.3 - 227.3		3.0	100							
227.3 - 230.4		3.1	100							
230.4 - 233.4		2.7	90							
233.4 - 236.5		2.4	77							
236.5 - 241.5		4.6	92							
241.5 - 243.8		2.8	84							
243.8 - 245.6		1.7	94							

Drill Hole Record



Property	BARB	District	WATSON LAKE M.D.	Hole No.	80-3
Commenced	April 23/80	Location	East Arm, Francois L.	Tests at	137.16 m, 270.3 m.
Completed	May 4/80	Core Size	NQ	Corr. Dip	-78°
Co-ordinates	12 + 00E/6 + 00S			True Brg.	180°AZ (corrected 187°)
Objective	MATT ZONE			% Recov.	89
				Hor. Comp.	56.2m
				Vert. Comp.	264.4
				Logged by	A.L. MACGREGOR
				Date	May 5/80

Claim BARB 12

T Brg. 180°

Collar Dip -80°

Elev. 861 m

Length 270.3

Hole No.

Sheet 7

METERAGE		Description	Sample No.	Length	Analysis			
From	To				Au	Ag	Pb	Zn
0	37.1	Overburden - Intrusive boulders, 30 cm Peat Moss						
37.1	41.0	Phyllite - med. grey, banded, calcareous, very small qtz veins with diss. py. along veins numerous muddy sections						
41.0	50.9	Phyllite - grey, mud seams or gouge, diss. py, <1 mm qtz. veins, light green bands						
50.9	55.5	Gault gouge or mud seam with quartz, a 10 cm section of dk grey phyllite with less than ½% py						
63.4	70.4	Phyllite - light grey to dk grey some green bands which carry some pyrrhotite, <1 mm quartz veins, diss. pyrite, pyrr. throughout phyllite						
70.4	70.5	Quartz vein - white, 15% py, 2% Chalco	64101	.12	0024	0026	0006	0002
70.5	79.1	Phyllite - dk grey, occasional qtz veins, core highly fractured						
79.1	79.2	Quartz vein - white, 2% py, pyrr						
79.2	79.4	Phyllite - dk grey, banded, shattered.						
79.4	79.6	Quartz - White, 1% sulphides, mainly pyrr. tr. py						
79.6	80.5	Phyllite - dk grey, qtz veins <1 mm - 3 mm						
80.5	80.8	Phyllite - lt grey, very siliceous, <1% diss. py, a few darker laminations 80.6 Bedding 20°, Foliation 15°						
80.8	82.3	Lapilli Tuff - dk grey, laminations <1 mm - 1.5 cm, slightly calcareous, <1% Pyrr. white to pale green. Bedding parallel to core axis. Foliation 90° to bedding Grades from 82 - 82.3 to almost white, very siliceous						
82.3	82.6	Lapilli Tuff - dk. grey, very fine grain, pale green laminations <1% pyrr., py., bedding contorted, qtz veining throughout.						

Drill Hole Record



Property	BARB (Page 2)	District	Hole No.
Commenced	Location	Tests at	Hor. Comp.
Completed	Core Size	Corr. Dip	Vert. Comp.
Co-ordinates		True Brg.	Logged by
Objective		% Recov.	Date

Claim
BARB 12

T Brg.

Collar Dip

Elev.

Length

Hole No. Sheet

METERAGE		Description	Sample No.	Length	Analysis					
From	To									
82.6	82.8	Lapilli Tuff - White very siliceous, mostly qtz								
82.8	85.8	Phyllite - dk grey, <1% pyrr along qtz veins, veins <1 mm up to 30 cm, bedding locally contorted.								
	85.3	14 cm green phyllite into 24 cm qtz and back into grey-phyllite.								
	85.8	Contact between phyllite and lapilli tuff								
85.8	87.8	Lapilli Tuff - v.f.g., white, green, bands <1 mm up ½ cm in thickness, bands are in some places contorted, bedding and foliation appears to be at right angles to the core axis.								
87.8	92.4	Phyllite - dk. grey, qtz veins throughout, 87.8 contact between Lapilli Tuff and phyllite, 88.7 - 5 mm band of py, diss. pyrr & py throughout (<1%) several mudseams, pyrr appears to be in qtz veins								
	89.1	bedding 40 ⁰ , foliation 90 ⁰ to core axis								
93.4	96.3	dk. grey to almost white sections, very siliceous with bands of dk. grey phyllite								
96.3	123.3	Phyllite - dk. grey to black, with white qtz veins and several siliceous lt. grey to white bands cutting phyllite, <1% pyrr, py along qtz stringers running throughout section, mudseams, some calcareous sections.								
	109.7 - 109.9	White qtz vein, tr. pyrr								
	114.8 - 115.0	Same as above								
	114.6	Bedding 40 ⁰ , Foliation Right angles to core axis								
	118.0	Small lamination of sphal. <1%								
	120.2 - 121.8	beds are highly folded with qtz veins 1% pyrr								
	121.8 - 122	white qtz vein								

Drill Hole Record



Property	BARB (Page 3)	District	Hole No.
Commenced	Location	Tests at	Hor. Comp.
Completed	Core Size	Corr. Dip	Vert. Comp.
Co-ordinates	True Brg.	Logged by	
Objective	% Recov.	Date	

Claim
BARB 12

T Brg.

Collar Dip

Elev.

Length

Hole No.
Sheet

METERAGE		Description	Sample No.	Length	Analysis				
From	To				Au	Ag	Pb	Zn	
	122.8 - 5	mm of pyrr.							
123.3 - 125.8		Lapilli Tuff - lt grey to a greenish colour with qtz veins, particles very from <1 mm up to 1.5 cm, the host rock is calcareous qtz veins have less than 1% sulphides py, v.f.g.							
125.8 - 134.3		Phyllite - greenish mud at contact grades into grey phyllite some minor pyrr in qtz veins (1-2 mm)							
	126.3 - 32	cm white qtz vein							
	127 - 10	cm green banded phyllite with 1% pyrr bands							
	129.2 - 20	cm mud seam or fault gouge							
	129.7 -	Bedding 70°, Foliation Right angles to core axis							
134.3 - 136.6		Lapilli Tuff - Lt. grey, v.f.g., sl. calcareous, a few qtz veins, particles <1 mm to 1.5 cm, less than 1% pyrr. (sulphides throughout section), 134.3 2 cm band of pale greenish phyllite with about 1% py.							
136.6 - 149.9		Phyllite - grey, 136 - 137.3 alternates from grey to green bands 138 - 138.3 the bedding has been folded and highly contorted, there are lighter (White) lamination through out the section they vary in size from 1 mm to 2 cm. 148.5 - 148.8 (148.5-149.4)	64102	.9	0002	004	001	002	
		Qtz mixed in with phyllite along with about 2% sulphides mainly pyrr & py (149.7-151.6)	64103	1.9	0003	002	001	001	
149.9 - 150.2		Quartz - Very dense coarse rock black with green bands & brownish bands of sulphides (149.4-149.7)	64105	.3	0002	004	010	006	
		60% (Pyrr, gal, sphal) Mainly pyrr							
150.2 - 153.2		Quartz - white, sections of grey phyllite at the following intervals 150.5 - 151.1, (151.6-153.6)	64104	2	0002	004	001	001	
		152.5, 152.8, 160 - 40 cm of qtz with approx 2% pyrr, py, 151.1 - 1% pyrr, py							

Drill Hole Record



Property BARB (Page 4)

District

Hole No.

Commenced

Location

Tests at

Hor. Comp.

Completed

Core Size

Corr. Dip

Vert. Comp.

Co-ordinates

True Brg.

Logged by

Objective

% Recov.

Date

Claim
BARB 12

T Brg.

Collar Dip

Elev.

Length

Hole No. Sheet

METERAGE		Description	Sample No.	Length	Analysis					
From	To									
153.2	176.1	Phyllite - grey, very siliceous, minor qtz veins throughout some as phyllite section above 159.4 - 164.3 very dense dk grey rock with angle pieces (1 cm to 4 cm) of qtz (possible quartz breccia)								
176.1	186.3	Phyllite - grey, silty siliceous laminations vary in size from <1 mm to 2 cm, most of them carry pyrr (<1%) Quartzbreccia (Fault Zone) quartz fragments 1 cm to 5 cm, py along contact between phyllite and quartz breccia 186.3 Bedding parallel to core axis, foliation 80°.								
186.3	186.5	Quartz - vein, white <1% py								
186.5	187.5	Phyllite - same as above								
187.5	190.4	Fault Zone? - a mixture of mud and qtz veins 2 cm to 10 cm with bands of phyllite mixed in with it.								
190.4	265.6	Phyllite - lt grey to dk grey, lt green silty laminations some beds are highly folded. 190.7 - diss. py 1% 197 - 198.1 beds are highly folded & carry minor amounts of pyrr <1%, white qtz 200.4 - 200.5 - wht., qtz. vein <1% pyrr, py 200.15 - 201.2 " " " " " " 201.3 - 201.9 " " " " " " 203.9 - 10 cm of qtz., & silty lamination, lt green & 1% pyrr 207 - Foliation at right angle to core axis 210.3 - 210.4 White qtz vein, tr. pyrr 214.5 - Bedding at 90° to core axis, laminations tr py, <1% pyrr 215 - 215.5 - qtz vein, white								

Drill Hole Record



Property BARB District Watson Lake M.D. Hole No. 80-3
 Commenced April 23/80 Location East Arm, Francois L. Tests at 137.16 m, 270.3 Hor. Comp.
 Completed May 4/80 Core Size NQ Corr. Dip -78° Vert. Comp.
 Co-ordinates 12 + 00E/6 + 00S True Brg. 180° AZ (corr. 187) Logged by A.L. MACGREGOR
 Objective 0 m - 37.1 m Overburden % Recov. 89 Date May 5/80

Claim BARB 12

T Brg. 180° (corr. 187)Collar Dip -80°

Elev.

Length 270.3 m

Hole No. Sheet

METERAGE		Description Short										Sample No.	Length	Analysis				
From	To		From	To	Short	From	To	Short	From	To	Short							
37.1	40.2	2.3	68.8	70.4	.6	102.4	104.9	.1	196.6	199.8	.1							
40.2	43.2	1.5	70.4	71.3	.3	104.9	108.2	1.2	199.8	235.9	0							
43.2	43.8	.25	71.3	73.4	.93	108.2	110.3	0	235.9	239.0	.1							
43.8	44.8	.8	73.4	74.9	.9	110.3	112.5	.5	239.0	245.8	0							
44.8	46.3	1.18	74.9	76.5	.73	112.5	114.5	.4	245.8	248.4	.5							
46.3	47.8	.92	76.5	77.7	.3	114.5	116.3	0	248.4	268.2	0							
47.8	49.3	1.25	77.7	79.2	.1	116.3	118.6	.5	268.2	269.7	.2							
49.3	50.9	1.2	79.2	80.8	.15	118.6	123.4	0	269.7	270.3	0							
50.9	51.8	1.0	80.8	82.6	.2	123.4	125.0	.1			.9							
51.8	52.7	.7	82.6	83.2	0	125.0	127.7	0	Total Core									
52.7	54.2	1.2	83.2	85.3	.4	127.7	129.2	.7	SHORT		29.73							
54.2	55.4	.67	85.3	88.4	0	129.2	131.3	.1										
55.4	56.9	.86	88.4	90.1	.1	131.3	133.2	.1										
56.9	58.2	.48	90.1	91.7	0	133.2	137.2	0										
58.2	59.7	1.01	91.7	93.4	.1	137.2	140.2	.1										
59.7	63.3	2.5	93.4	97.1	.3	140.2	142.3	.1										
63.3	64.3	.1	95.1	96.3	.8	142.3	148.8	0										
64.3	65.2	0	96.3	97.5	0	148.8	151.6	.1										
65.2	66.4	.07	97.5	99.4	.2	151.6	165.8	0										
66.4	67.6	.23	99.4	101	0	165.8	166.7	.1										
67.6	68.8	0	101	102.4	.3	166.7	196.6	0										
TOTAL		18.22			6.41			4.2										

Drill Hole Record



Property	BARB	District	Watson Lake, M.D.	Hole No.	80-5
Commenced	May 10/80	Location	East Arm, Francois L.	Tests at	Hor. Comp. 68.3m
Completed	May 21/80	Core Size	NQ	Corr. Dip	-080°
Co-ordinates	L20 + 00E, 13 + 51S	True Brg.	180°AZ	Logged by	A.L. MACGREGOR
Objective	"MATT ZONE"	% Recov.	83.3	Date	May 21/80

Claim BARB 12

T Brg. 180°

Collar Dip -80°

Elev. 856.4

Length 393.2

Hole No. A137M

Sheet

METERAGE		Description	Sample No.	Length	Analysis				
From	To								
0	6.1	Overburden							
6.1	16.4	Phyllite - light grey, banded, light green lamination, <1 mm up to 3 cm, bedding highly folded, occasional quartz veins, disseminated sulphides throughout <1% mainly pyrrhotite, some pyrite.							
16.4	16.6	Quartz - white, 10% pyrr, <1% Chalco.							
16.6	53.6	Phyllite - light grey, banded, light green to white laminations bedding highly folded 19.1 - 19.2 white quartz 1% pyrr 19.75- 19.8 white qtz 22.9 Bedding 60°, foliation 90° to core axis Disseminated py throughout section, 37.8 - 39.6, 39.9 - 41.1 no core recovery, very badly broken, impossible to measure bedding & foliation from 33.8 to 53.6							
53.6	53.7	Quartz - White, 2% py, light brown crystal material which is calcareous							
53.7	56.9	Phyllite - med. grey, badly broken, core ground, mud & quartz mixed in with phyllite							
56.9	57.2	Quartz - white, with fragments of phyllite 2% py							
57.2	101.8	Phyllite - light grey to dark grey, banded, white quartz veins cutting, some siliceous sections, slightly calcareous minor amounts of pyrr & py 1%, mud seams, core recovery very poor, some silty laminations 67.5 - 67.0 White qtz, <1% gal., chalco, arsenopy. 67.9 - 70.7 No core 75.8 - 76.2 Mud seam 76.5 - 77.4 25 cm. of core - white qtz - 1% py, pyrr 80.0 - 80.1 grey very siliceous rock							

Drill Hole Record



Property		BARB	District		Hole No.	80-5			
Commenced			Location		Tests at		Hor. Comp.		
Completed			Core Size		Corr. Dip		Vert. Comp.		
Co-ordinates			True Brg.		Logged by				
Objective			% Recov.		Date				
METERAGE		Description				Sample No.	Length	Analysis	
From	To								
		80.2 - 80.6 1% py along white lamination, slightly calcareous							
		91.3 - 91.6 lt. grey, very siliceous rock with qtz veins cutting it, less than 1% pyrr.							
		91.6 - 92.4 No core							
		92.4 - 94.8 Core badly broken up.							
101.8	103.5	Phyllite - lt. grey & dark grey sections, diss. py <1%, white laminations, mud seams, small qtz. stringers, slightly calcareous 103 - bedding 60°							
103.5	108.8	Mud Seam - mixture of mud & grounded up phyllite & very fine py throughout							
108.8	116.4	Phyllite - grey, core grounded up, looks like gravel.							
		110.0 - 113.4 No Core							
		114.9 - 114.8 Quartz, white - 2% chalco., py.							
116.4	125.2	Phyllite - med. grey to dk. grey banded, white & green laminations diss. py, sections of core grounded up, occasional mud seams, 122.3 bedding 60°							
125.2	126.8	Siliceous, dense, lt., grey, with white laminations which are calcareous, minor amounts of pyrr <1%							
126.8	137.9	Phyllite - med. grey to dark grey, banded, white laminations, slightly calcareous, diss. py, sections or bands - 2% py 131 - bedding, 60°, Foliation 80° <1% pyrr, qtz veins mud seams 137 bedding 70° Foliation right angles to core axis							
137.9	142.0	Phyllite - med. grey, mixture of mud, qtz veins, disseminated py, light and green bands 139.95 band of py 5%							

Claim
BARB 12

T Brg.

Collar Dip

Elev.

Length

Hole No.
Sheet

Drill Hole Record



Property	BARB	District	Hole No.	80-5
Commenced	Location	Tests at	Hor. Comp.	
Completed	Core Size	Corr. Dip	Vert. Comp.	
Co-ordinates		True Brg.	Logged by	
Objective		% Recov.	Date	

Claim
BARB

T Brg.

Collar Dip

Elev.

Length

Hole No.
Sheet

METERAGE		Description	Sample No.	Length	Analysis			
From	To				Au	Ag	Pb	Zn
		139.8 - 140.1 white qtz mixed with phyllite, 1% pyrr. & py.						
		141.3 - 141.6 white qtz, <1% chalco & gal.						
142.0 - 142.7		Phyllite - light grey band, green and white laminations 5 mm 1% py and pyrr, tr chalco						
		142.45 - 142.55 - 20% sulphides, in a qtz vein, py, chalco, poss. sphal? (142.3-142.54)	64106	.24	0003	015	002	-001
142.7 - 155.4		Phyllite - med to dark grey banded, green & white silty laminations diss. py throughout						
		<1% py, highly folded in some spots qtz. veins with <1% pyrr, several mud seams						
		148 - Bedding 60°						
		153.5 Foliation Right angles to C.A., Bedding 70°						
155.4 - 190.8		Phyllite - med. to dark grey banded, white & green laminations, qtz. veins & mud seams, (157-157.5)	64107	.5m	0002	002	-001	-001
		diss. pyrr <1% pyrr, py appears to be more pyrr. in this section, some folding						
		156.05 - 156.2 white						
		156.9 - 158.0 white qtz veins ½ cm - 1 cm minor amounts of pyrr						
		163.8 - 169.3, 172.2 - 184.4 - core broken mixture of phyllite, quartz and mud						
		185.5 - 185.7 banded phyllite with bands of pyrr - 3%						
		185.9 - 187.8 several bands of py. & pyrr. right angle to core axis foliation						
		throughout section seems to be at right angles to core axis						
		185.9 Bedding 60°						
		169.1 Bedding 90° to C.A.						
		171.8 Bedding 70°						
190.8 - 196.8		Phyllite - med. grey, banded, green laminations & white, small qtz veins which occasionally						
		carry minor amounts of pyrr <1%,						

Drill Hole Record



Property	BARB	District	Hole No.	80-5
Commenced		Location	Tests at	Hor. Comp.
Completed		Core Size	Corr. Dip	Vert. Comp.
Co-ordinates			True Brg.	Logged by
Objective			% Recov.	Date

Claim
BARB

T Brg.

Collar Dip

Elev.

Length

Hole No.
Sheet

METERAGE		Description	Sample No.	Length	Analysis					
From	To									
		196.3 band of pyrr								
		194.3 - 194.5 mud seams with qtz								
		196.6 bedding appears to be 90° to core axis								
196.8 - 196.9		Quartz - white, 1% pyrr								
196.9 - 197.1		Phyllite - banded, grey, a few specks honey colour sphal(?)								
197.1 - 197.8		Mixture of grey phyllite & qtz - 1% pyrr								
197.8 - 200.1		Phyllite - banded, grey, green & white laminations <1 mm up to 5 cm occasional, blebs of pyrr, py, chalco								
		199 - bedding 60°, Foliation 90°								
200.1 - 200.6		Quartz - white, mix with phyllite 1% pyrr & chalco angular pieces could be a fault zone								
200.6 - 220.0		Phyllite - light grey to med. grey, banded green & white laminations quartz veining, laminations are thinner than previous section <1 mm to 1 cm, occasional spot of sulphides py, pyrr some local folding								
		204.9 bedding 80°, foliation 90°								
		203.3 - 201.5 No core								
		207.5 - 20 cm white qtz, 207.7 - 207.8 - white qtz & phyllite 1% pyrr, 212.7 - 213.5 - phyllite & qtz. possible fault gouge 213 - 213.5 some sections 2% py								
		215.7 - 217.9 white qtz vein								
		217.9 - 218.5 - siliceous dense rock v.f.g. - green fragments with white qtz - 1% pyrr								
		219.7 Bedding & foliation 90° to core axis								

Drill Hole Record



Property	BARB	District	Hole No.	80-5
Commenced		Location	Tests at	Hor. Comp.
Completed		Core Size	Corr. Dip	Vert. Comp.
Co-ordinates			True Brg.	Logged by
Objective			% Recov.	Date

Claim
BARB

T Brg.

Collar Dip

Elev.

Length

Hole No.
Sheet

METERAGE		Description	Sample No.	Length	Analysis					
From	To									
220	226.2	Phyllite - banded, light grey grades to darker grey at end of section, green & white laminations								
		207.7 - 208.15 white qtz mixed with phyllite tr. of pyrr & py some minor qtz veins cutting phyllite with 1% py & pyrr								
		224.8 - 225.9 - band of py. between green & grey phyllite								
226.2	259.7	Phyllite - banded, med. grey, white & green laminations small qtz veins which appear to bring in some pyrr along them								
		<1% to 1% in some spots								
		228.9 - 229.2 Possible fault-zone, phyllite, qtz & mud								
		230.4 Bedding & foliation 90°								
		232 - 232.2 grounded up phyllite, calcareous								
		232.7 mud seam 4 cm wide with py. cubes								
		232.2 - 237.4 several spots of pyrr & py <1% some calcareous section also								
		236.8 - 236.9 qtz. with phyllite fragments and 2% pyrr								
		237.0 - 237.4 mud seam with py, fault?								
		237.4 - 240.9 phyllite with diss. py & pyrr								
		240.9 - 241.1 white qtz & grey phyllite 1-2% pyrr								
		242.7 - 242.9 calcareous mud seam <1% py cubes								
		242.9 - 247.2 minor amounts of diss. pyrr & py								
		247.2 - 247.25 qtz vein - 1% pyrr								
		248.4 - 248.2 dk grey mud seam								
		248.6 - 249.2 grounded up cemented phyllite with tiny cubes py								

Drill Hole Record



Property	BARB	District	Hole No.	80-5
Commenced		Location	Tests at	Hor. Comp.
Completed		Core Size	Corr. Dip	Vert. Comp.
Co-ordinates			True Brg.	Logged by
Objective			% Recov.	Date

Claim
BARB

T Brg.

Collar Dip

Elev.

Length

Hole No.
Sheet

METERAGE		Description	Sample No.	Length	Analysis			
From	To				Au	Ag	Pb	Zn
		249.2 - 253.6 diss. py <1%						
		253.6 - 253.8 mud seam mixed with dk grey phyllite						
		253.8 - 253.6 phyllite - diss. py & pyrr <1%						
		258.6 - 259.1 grounded up phyllite & mud						
259.7 - 272.05		Phyllite - med. grey, banded, green laminations, quartz veins from 2 mm to 15 cm, mudseams blebs of pyrr throughout section, non-calcareous						
		260.62 - 260.63 band of pyrr & qtz 10%						
		263.7 - bedding 60°						
		264.7 - bedding 70° Foliation?						
		267.3 - 267.45 white quartz mixed with grey phyllite slightly calcareous 15% pyrr, a couple specks of sphal (267.3 - 267.45)	64108	.15	0.002	0.002	0.010	0.01
272.05 - 280.05		Fault Zone? - cemented grey phyllite, white quartz, slightly calcareous, some grey siliceous, dense-rock, diss. chalco, py, pyrr throughout 1-2%						
		278.3 - 278.5 banded, grey, phyllite, white & green laminations						
280.05 - 281.9		Phyllite - banded, med. grey, med green to light grey laminations 281.0 bedding 70° Foliation 90°, diss. pyrr (blebs) 1%, some py <1%						
281.9 - 287.2		Phyllite - med grey banded, green laminations, <1 m - 5 cm, diss. py throughout grey phyllite, qtz veins 2 mm - 1 cm, contain pyrr as high as 1%, 282.8 bedding 60°						
		286.6 - 287.2 grey phyllite mixed with quartz green laminations which are folded & twisted around, angular fragments and also veins of quartz less than <1% pyrr, py						
287.2 - 304.0		Phyllite - med. grey, banded, green & lt. grey laminations, green laminations 1 mm to 7 cm, qtz veins, bedding highly folded						

Drill Hole Record



Property	BARB	District	Hole No.	80-5
Commenced	Location		Tests at	Hor. Comp.
Completed	Core Size		Corr. Dip	Vert. Comp.
Co-ordinates			True Brg.	Logged by
Objective			% Recov.	Date

Claim
BARB

T Brg.

Collar Dip

Elev.

Length

Hole No.
Sheet

METERAGE		Description	Sample No.	Length	Analysis				
From	To						Au	Ag	Pb
		287.2 - 286.4 diss py & pyrr							
		285.0 - 285.9 cemented phyllite & quartz, mud 1% py, fault zone?							
		290.7 - 290.95 Quartz vein & grey phyllite <1% pyrr							
		291.75 - 291.90 Banded phyllite 15% pyrr							
		291.2 bedding 80° Foliation 90°							
		292.9 - 304.0 banded phyllite, white & green laminations occasional qtz vein with 1% pyrr., some diss. py & pyrr throughout section <1% 300.3 - 300.9 &							
		301.9 - 301.8 - soft grey almost mud phyllite & quartz fragments some py 1%							
304.0 - 312.5		Phyllite - banded med. grey, laminated - green & qtz veins, varying in size from <1 mm to 5 cm, qtz veins carry some sulphides mainly pyrr, some diss pyrr, occasional band of py							
		305.0 - 307.1 No Core							
		308.2 - 308.3 White quartz & phyllite 5% pyrr							
		310.1 - 310.15 Quartz 10% pyrr							
		310.9 - 311.04 Quartz 5% pyrr							
		311.04 - 311.12 Phyllite mud							
		311.12 - 311.20 Quartz 5% pyrr							
		Banded phyllite to end of section with minor amounts of pyrr 1% - appears to be in green laminations.							
312.5 - 313.8		Quartz - white mixed with bands of grey phyllite, sulphides from 1% - 20% throughout section mainly pyrr, chalco.	64109	1.3			0.002	0.002	0.01
		313.6 2 cm band of solid pyrr							

Drill Hole Record



Property	BARB	District	Hole No.	80-5
Commenced		Location	Tests at	Hor. Comp.
Completed		Core Size	Corr. Dip	Vert. Comp.
Co-ordinates			True Brg.	Logged by
Objective			% Recov.	Date

Claim	BARB
T Brg.	
Collar Dip	
Elev.	
Length	
Hole No.	

METERAGE		Description	Sample No.	Length	Analysis					
From	To									
313.8	327.6	Phyllite - banded, med grey, green to lt. grey laminations, qtz veins, blebs & diss. py & pyrr throughout section some locally folding								
		319.9 Bedding 90°								
		325.8 Bedding 80° Foliation 90°								
		Thin laminations at end of section, slightly calcareous								
327.6	338.3	Phyllite - med. grey, banded, light green laminations, <1 mm to 5 mm, qtz veins, diss. pyrr, which appears to be along laminations								
		328.2 - 328.25 - green siliceous band, v.f.g. - slightly calcareous								
		328.9 - bedding 70°								
		336.3 - 336.4 mud seam								
		336.48 - 336.52 white qtz. vein - 5% pyrr								
		336.52 - 338.3 phyllite quite shattered								
		336 Bedding 70°								
		338.3 - 338.4 - 10 cm mud								
		338.4 - Phyllite - dk grey, banded, qtz veins 1-2% pyrr								
339.5	345.4	Phyllite - banded, green laminations, mud seams, qtz. veins, diss py & pyrr laminations are very uniform to start, then they get distorted by numerous qtz. veins & look like fragments poss. fault zone, sections of ground up phyllite - occasional band of py.								
		345.4 - 348.7 Phyllite - med. grey, banded, white & green laminations, qtz. veins with pyrr., some folding, diss pyrr - 1%								
		348.0 - 348.07 - qtz. white - 5% pyrr								

Drill Hole Record



Property	BARB	District	Hole No.	80-5
Commenced		Location	Tests at	Hor. Comp.
Completed		Core Size	Corr. Dip	Vert. Comp.
Co-ordinates			True Brg.	Logged by
Objective			% Recov.	Date

Claim
BARB

T Brg.

Collar Dip

Elev.

Length

Hole No.

Sheet

METERAGE		Description	Sample No.	Length	Analysis					
From	To									
		348.35 - 348.37 - qtz white - 5% pyrr								
		Bedding 60 ⁰ , Foliation 90 ⁰								
348.7	349.9	Mixture of qtz & green, f.g., non-calcareous, dense-rock, quartz appears to be in veins and some fragments, also some phyllite mixed in.								
		348 - qtz vein - 15% pyrr - 5 cm								
		349.9 - 15 cm qtz vein - 15% pyrr								
349.9	393.2	Phyllite - med grey - lt grey, banded green laminations, qtz veins, mud seams, grounded up sections, slightly calcareous in spots, diss. pyrr & py throughout								
		355 ⁰ bedding 50 ⁰ , some locally folding								
		356.25 - 356.55 white qtz - 15% pyrr								
		357.3 - Bedding 30 ⁰								
		360.4 - Bedding 80 ⁰ Foliation 90 ⁰								
		368.4 - Bedding paralalled to Core axis								
		370 - 385.3 - Core badly broken, hard to get bedding								
		372.5 - 3 cm - white qtz 3% pyrr								
		378.9 - 379.23 - white qtz								
		383.2 - 383.5 - qtz mix with calcite & green siliceous material 10% pyrr								
		388.4 - 389 - qtz white 1-2% pyrr								
		390.2 - 393.2 mud & phyllite to end								
		388.1 - Bedding Parallel								
		383.5 - End looks like it could be a fault								

Drill Hole Record



Property BARB District WATSON LAKE, M.D. Hole No. 80-5
 Commenced May 10/80 Location East Arm Francois L. Tests at Hor. Comp.
 Completed May 21/80 Core Size NQ Corr. Dip 80° Vert. Comp.
 Co-ordinates L20 + 00E, 13 + 51S True Brg. 180° Logged by A.L. MACGREGOR
 Objective % Recov. 83.3 Date May 22/80

Claim BARB 12

T Brg. 180°

Collar Dip -80°

Elev. 856.4 m

Length

Hole No. 393 2

Sheet

METERAGE		Description	Short			From			To			Short			Sample No.	Length	Analysis			
From	To		From	To	Short	From	To	Short	From	To	Short	From	To	Short						
0	6.1	OVBD.	46.9	49.7	2.2	89.9	91.6	.7	128.0	129.2	.2	170.7	171.3	0						
6.1	12.2	0	49.7	51.4	0	91.6	92.4	.8	129.2	130.8	.7									
12.2	14.0	.3	51.4	52.4	.7	92.4	93.9	0	130.8	132.3	.3	171.3	171.6	.3						
14.0	14.6	.3	52.4	53.0	.3	93.9	94.8	.1	132.3	133.5	.1	171.6	172.2	0						
14.6	16.4	.2	53.0	54.6	.9	94.8	96.3	0	133.5	134.7	.1	172.2	173.7	.4						
16.4	17.8	.4	54.6	57.6	1.4	96.3	98.1	.3	134.7	135.1	0	173.7	178.3	4.2						
17.8	19.8	0	57.6	58.3	0	98.1	101.8	0	135.1	136.2	.3	178.3	179.8	0						
19.8	21.3	.7	58.3	59.7	1.	101.8	102.8	.15	136.2	137.8	.2	179.8	180.4	.2						
21.3	24.4	0	59.7	62.8	0	102.8	104.9	.4	137.8	139.3	0	180.4	181.6	.8						
24.4	25.6	1.2	62.8	64.2	.2	104.9	106.1	.6	139.3	140.8	0	181.6	183.2	.7						
25.6	29.2	0	64.2	65.9	0	106.1	108.8	2.0	140.8	142.0	.1	183.2	184.4	.2						
29.2	31.4	1.4	65.9	67.1	.2	108.8	110.0	.6	142.0	149.0	0	184.4	187.5	0						
31.4	33.8	.5	67.1	67.9	0	110.0	113.4	3.4	149.0	150.6	.2	187.5	189.3	.5						
33.8	34.7	0	67.9	70.7	.8	113.4	114.9	1.4	150.6	153.6	0	189.3	190.8	.3						
34.7	37.8	1.3	70.7	73.1	0	114.9	116.4	1.2	153.6	155.4	.2	190.8	193.5	0						
37.8	39.6	1.8	73.1	76.2	1.4	116.4	119.2	2.1	155.4	161.8	0	193.5	194.5	.3						
39.6	39.9	0	76.2	77.4	.7	119.2	120.7	0	161.8	164.0	.4	194.5	196.0	.2						
39.9	41.1	1.2	77.4	86.2	0	120.7	122.5	.2	164.0	165.5	0	196.0	196.6	0						
41.1	42.6	1.2	86.2	87.9	.1	122.5	124.4	0	165.5	168.6	1.0	196.6	197.1	.1						
42.6	44.5	1.0	87.9	88.7	0	124.4	126.5	.3	168.6	170.1	0	197.1	198.4	0						
44.5	46.9	.8	88.7	89.9	.2	126.5	128.0	.6	170.1	170.7	.3	198.4	199.9	0						
TOTAL		12.3			10.1			14.85			4.1			8.2						

Drill Hole Record



Property	BARB	District	Watson Lake M.D.	Hole No.	80-5
Commenced	May 10/80	Location	East Francois L.	Tests at	Hor. Comp.
Completed		Core Size	NQ	Corr. Dip	80
Co-ordinates	L20 + 00E, 13 + 51S	True Brg.	180 ⁰	Logged by	A.L. MACGREGOR
Objective		% Recov.	83.3	Date	

Claim
BARB

T Brg.

Collar Dip

Elev.

Length

Hole No.
Sheet

METERAGE		Description					Sample No.	Length	Analysis					
From	To	Short	From	To	Short									
199.9	201.5	.1	307.1	326.7	0	Total Core SHORT 65.7 m								
201.5	203.3	1.8	326.7	331.3	0									
203.3	220.0	0	331.3	332.8	1.1									
220.0	227.7	0	332.8	336.3	0									
227.7	229.2	.1	336.3	338.3	.2									
229.2	258.2	0	338.3	340.9	0									
258.2	262.7	0	340.9	341.8	.4									
262.7	264.3	.1	341.8	352.8	0									
264.3	268.8	0	352.8	353.9	.1									
268.8	270.4	.1	353.9	359.7	0									
270.4	281.0	0	359.7	361.8	.2									
281.0	282.5	0	361.8	363.9	0									
282.5	284.1	.05	363.9	367.9	3.2									
284.1	285.6	.1	367.9	378.6	0									
285.6	288.6	0	378.6	380.1	.5									
288.6	290.2	.1	380.1	387.2	0									
290.2	300.8	0	387.2	388.9	.15									
300.8	302.4	.2	388.9	393.2	0									
302.4	303.9	.1			5.85									
303.9	305.4	0												
305.4	307.1	1.7												
TOTAL		4.45												

