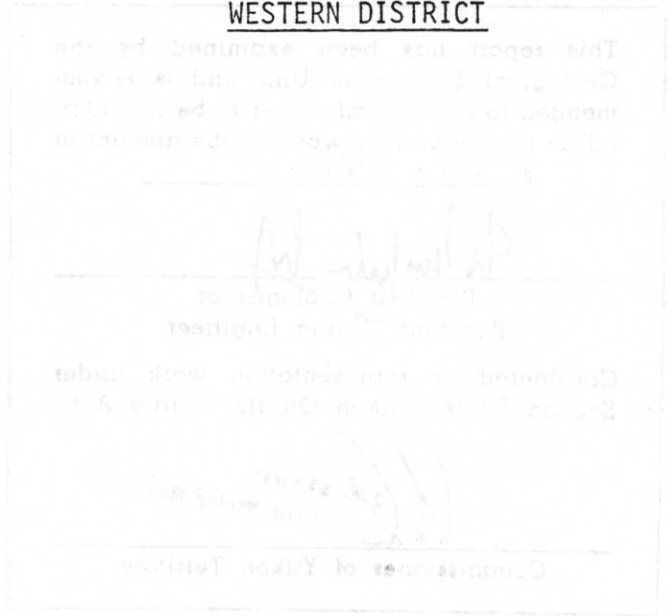


COMINCO LTD.

EXPLORATION

WESTERN DISTRICT



FIN GROUP

WATSON LAKE M.D., YUKON

LATITUDE: 61°40'N; LONGITUDE: 129°50'W

ASSESSMENT REPORT FOR DIAMOND HOLE DRILLING

ON MINERAL CLAIMS FIN 23, 24, 25 AND 26

DURING JUNE 3 TO JULY 19, 1980

UNDER SUPERVISION OF

A.B. MAWER, SENIOR GEOLOGIST




AUGUST 27, 1980

R.W. LANE, GEOLOGIST

090658

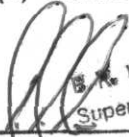
This report has been examined by the Geological Evaluation Unit and is recommended to the Commissioner to be considered as representation work in the amount of

\$ 19,750.00



Resident Geologist or
Resident Mining Engineer

Considered as representation work under Section 53 (4) Yukon Quartz Mining Act.



S. K. BAXTER
Supervising Mining Recorder

Commissioner of Yukon Territory



TABLE OF CONTENTS

LOCATION MAP OF FIN PROPERTY, SCALE 1:500,000, PLATE A

CLAIM MAP, SCALE 1"=2 MILES, PLATE B

FIN PROPERTY, DIAMOND DRILL SITES 80-1 TO 80-6 INCL., SCALE 1:5,000,
PLATE C

CROSS SECTION, DDH-80-1 & 2, SCALE 1:1,000, PLATE D

CROSS SECTION DDH-80-3, SCALE 1:1,000, PLATE E

CROSS SECTION DDH-80-4, SCALE 1:1,000, PLATE F

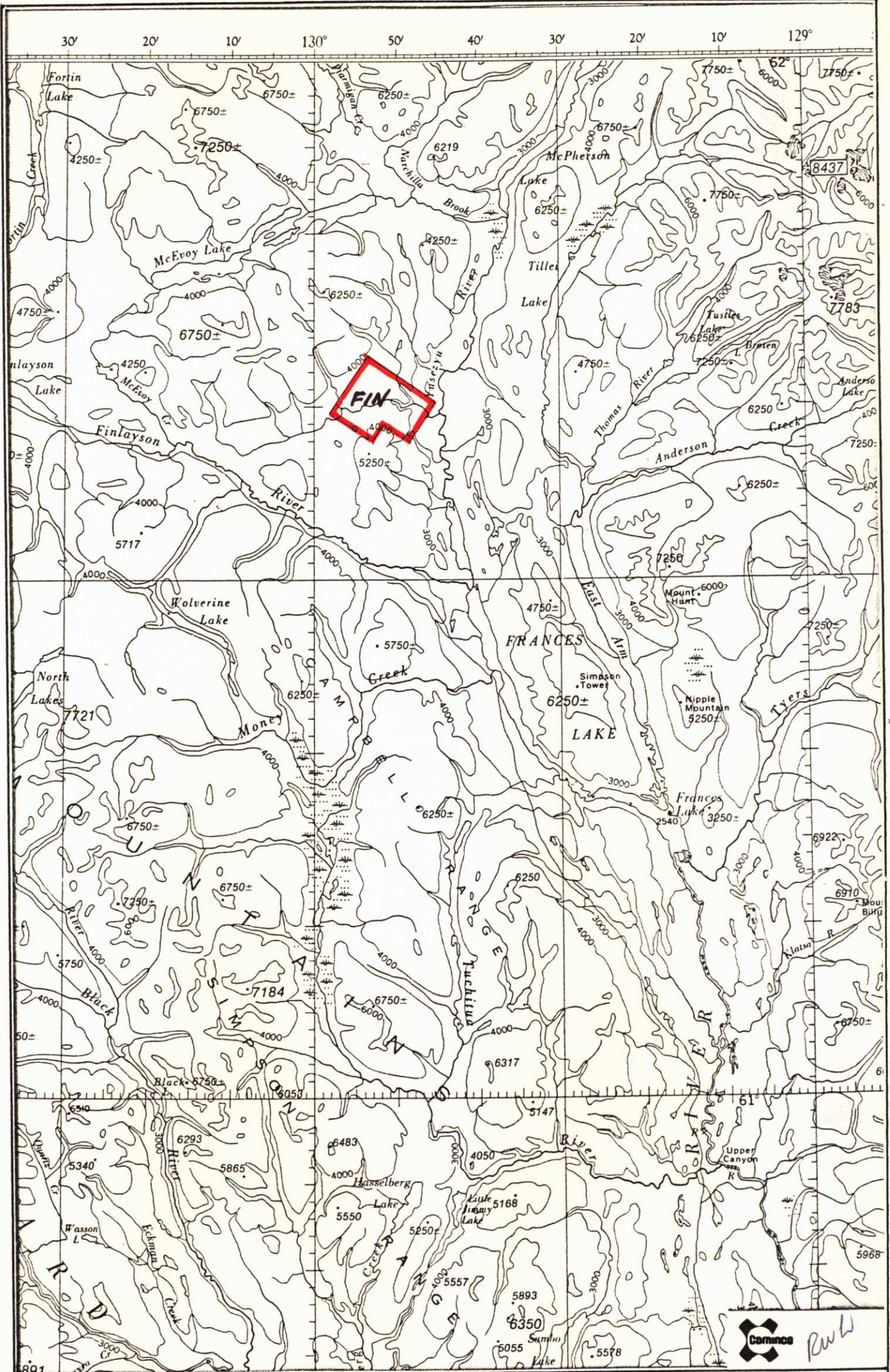
CROSS SECTION DDH-80-5, SCALE 1:1,000, PLATE G

CROSS SECTION DDH-80-6, SCALE 1:1,000, PLATE H

LOGS, CORE AND ROCK GEOCHEMICAL VALUES, AND RECOVERY, DDH-80-1 TO 80-6,
INCL.

STATEMENT OF QUALIFICATIONS

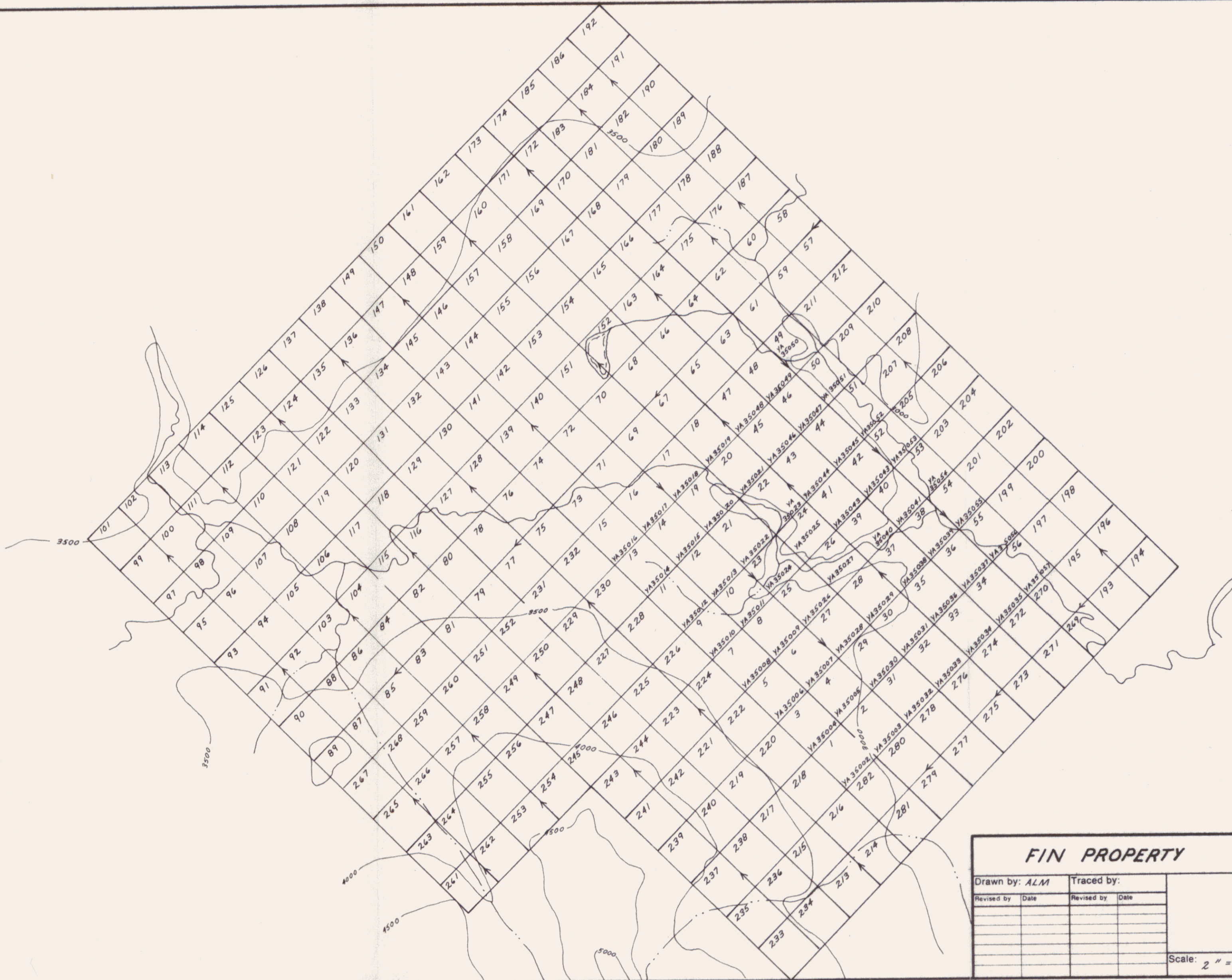
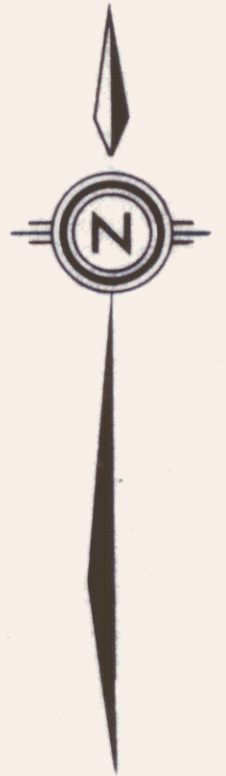
STATEMENT OF EXPENDITURES



Drawn by: <i>RWL</i>		Traced by:	
Revised by	Date	Revised by	Date

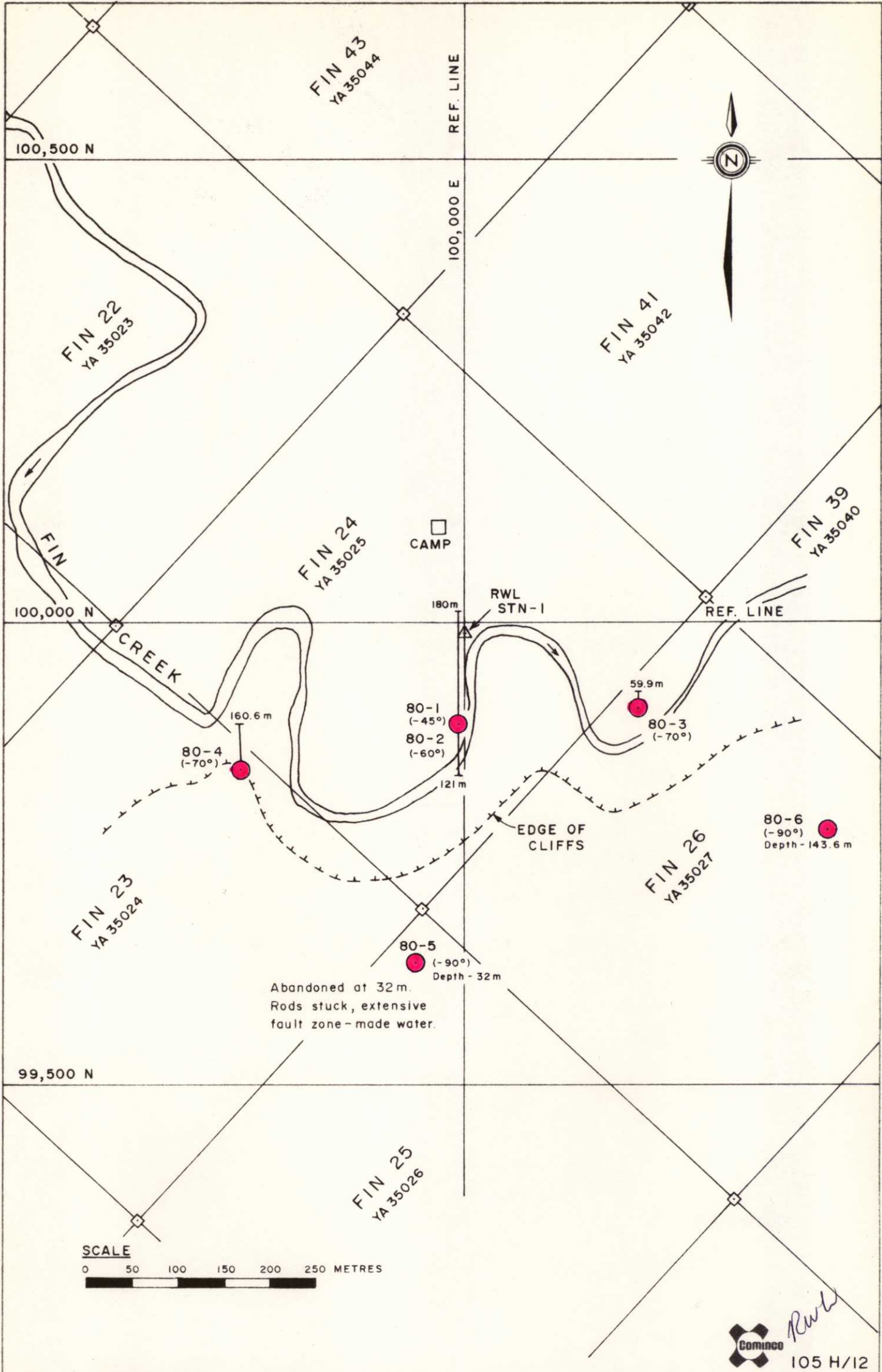
LOCATION MAP
 FIN PROPERTY, FRANCIS LAKE AREA
 WATSON LAKE M.D. YUKON
 61° 40' N - 129° 50' W

Scale: 1:500,000 Date: AUG 1980 Plate: A



FIN PROPERTY				N.T.S. 105 H/12	
Drawn by: ALM		Traced by:		<h1>CLAIM MAP</h1>	
Revised by	Date	Revised by	Date		
Scale: 2" = 1 mile		Date: March 1980		Plate: 3	

Rwl



Drawn by: RWL		Traced by: <i>P. Mt</i>	
Revised by	Date	Revised by	Date
		<i>P. Mt</i>	<i>Aug 26/80</i>

FIN PROPERTY
YUSEZYU RIVER TRIBUTARY, YUKON TERRITORY
DRILL SITES 80-1 to 80-6

Scale: 1:5000

Date: AUG. 5, 1980

Plate: *e*

SOUTH

NORTH

REFERENCE LINE 100,000N

900 m

850 m

800 m

750 m

700 m

650 m

DDH 80-2
Dip - 60°

DDH 80-1
Dip - 45°

Collar Elev - 829 m

OVERBURDEN

6.5 m

6.4 m

High grade bed
of laminated galena
and sphalerite

Silty mudstone to siltstone with minor
mudstone and 0.5-5.0% sandstone

121 metres
End of hole 80-2

Interlaminated siltstone
mudstone and sandstone

180 metres
End of hole 80-1

Siltstone with subordinate
mudstone and minor sandstone

Siltstone with subordinate
mudstone and minor sandstone

Siltstone interbedded to
interlaminated with 5-20%
sandstone and 5%
mudstone.

Mudstone interlaminated to
interbedded with moderate
amounts of siltstone

RWL
STN-4

RWL
STN-3

RWL
STN-2

RWL
STN-1

qtz



FIN PROPERTY



Drawn by: RWL	Traced by: P.M.J.
Revised by	Date
Revised by	Date

CROSS SECTION
DDH's 80-1 & 80-2

Scale: 1:1000

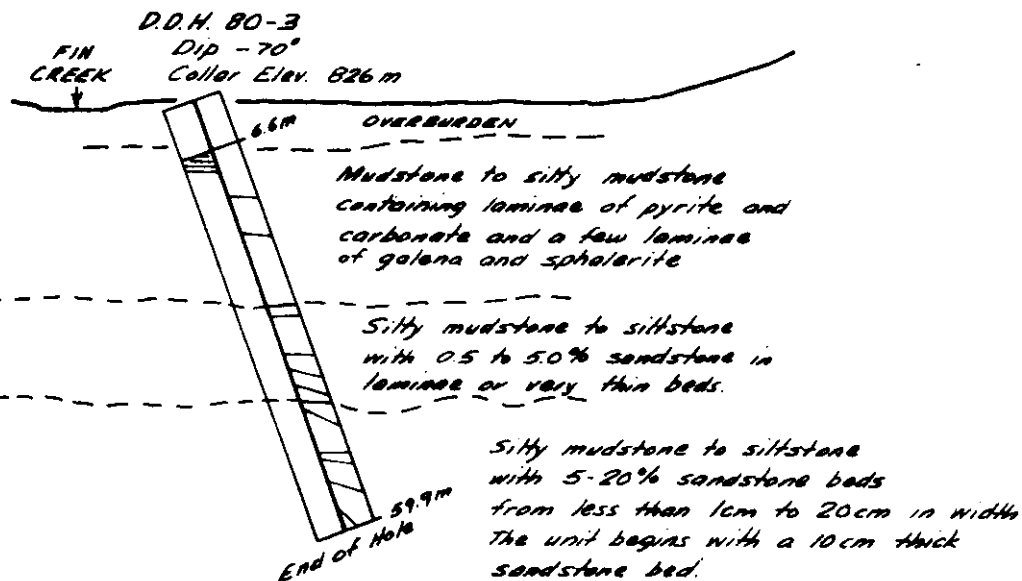
Date: JUNE 17, 1980

Plate: D

RWL

SOUTH

NORTH



RWL
105 H/12

Drawn by: RWL	Traced by: <i>A. Mack</i>
Revised by: _____ Date: _____	Revised by: <i>P. Mack</i> Date: <i>Aug 26/80</i>

FIN PROPERTY

CROSS SECTION of D.D.H. 80-3

Scale: 1:1000 Date: AUG. 5, 1980 Plate: **E**

SOUTH

NORTH

D.D.H. 80-4
Dip -70°
Collar Elev. 863.5 m

OVERBURDEN

STN 114

9.4 m

Interbedded sandstone
siltstone and silty mudstone.
Sandstone constituting 40%
of the unit.

Flaggy to platy
silty mudstone to
siltstone unit.

W-5 showing - consists of a lens 12 cm. thick
and approx 1.5 m long
Pb - 4.9%, Zn 13.8%, Cd - 0.27%

Siltstone to silty
mudstone interbedded
to interlaminated

Fissile calcareous
mudstone to silty mudstone
unit.

FIN CREEK

Mudstone to silty mudstone,
carbonaceous, weakly
calcareous in places
Minor disseminated pyrite

Approx. attitude
of major fault

Mudstone, calcareous weakly calcareous.
Minor disseminated pyrite, faintly
laminated to massive.

fault
contact

Siltstone, silty mudstone,
and minor sandstone (0.5-5%)

Siltstone sandstone (5-40%)
and minor silty mudstone
thinly interbedded

Siltstone, interlaminated to interbedded
with subordinate amounts of silty
mudstone to mudstone and 0.5-3.0%
sandstone.

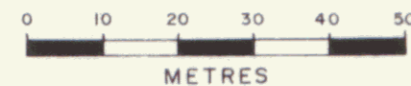
160.6 m
End of Hole

850 m

800 m

750 m

700 m



FIN PROPERTY



Drawn by:	RWL	Traced by:	<i>P.M.J.</i>
Revised by	Date	Revised by	Date
		<i>P.M.J.</i>	Aug 26/80

CROSS SECTION of D.D.H. 80-4

Scale: 1:1000

Date: AUG. 5, 1980

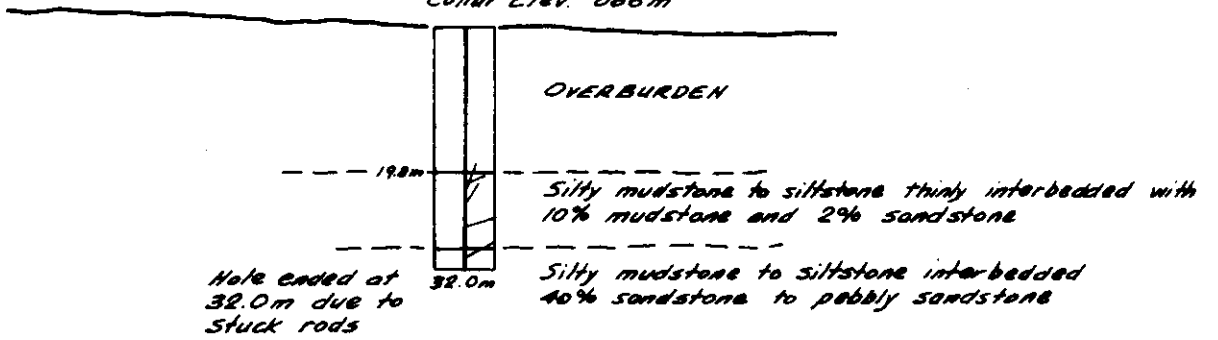
Plate: F

RWL

SOUTH

NORTH

D.D.H 80-5
Dip - 90°
Collar Elev. 886m



RWL
 105 H/12

Drawn by: RWL		Traced by: <i>R.M.A.</i>	
Revised by	Date	Revised by	Date
		<i>R.M.A.</i>	<i>Aug 26/80</i>

FIN PROPERTY

CROSS SECTION of D.D.H. 80-5

Scale: 1:1000

Date: AUG. 5, 1980

Plate: 9

SOUTH

NORTH

DDH 80-6
Dip: Vert.
Collar Elev. 902.8 m

900 m

OVERBURDEN

10.7 m

850 m

50.8 m →

Siltstone thinly interbedded to interlaminated with 30% silty mudstone to mudstone and 1-2% sandstone. Pyrite occurs disseminated and laminated and occasionally in nodules. Estimated 0.25% pyrite from 10.7m to 50.8m and 1% pyrite from 50.8m to 95.5m.

800 m

Siltstone interbedded to interlaminated with 25% sandstone and 5% silty mudstone to mudstone. The sandstone beds range in thickness from 1cm. up to 1.2 m.

Siltstone laminated to thinly interbedded with 10% silty sandstone to mudstone and 5% sandstone.

143.6 m

End of Hole



RWL

105 H/12

Drawn by: RWL	Traced by: <i>P. M. G.</i>
Revised by: _____ Date: _____	Revised by: <i>P. M. G.</i> Date: <i>Aug 26/80</i>

FIN PROPERTY

CROSS SECTION of D.D.H. 80-6

Scale: 1:1000

Date: AUG. 5, 1980

Plate: H

Scale

Colour Plot
& Dip

Drill Hole Record



Property	FIN	District	Watson Lake M.D.	Hole No.	DDH-80-1
Commenced	June 6, 1980	Location	Yusezyu River	Tests at	NONE
Completed	June 13, 1980	Core Size	NQ	Corr. Dip	-45° to north
Co-ordinates	99,890N & 99,994E		True Brg.	0°	Logged by Ron W. Lane
Objective	To test soil geochem anomalies and outcrop containing Pb-Zn mineralization.		% Recov.	69.4%	Date June 15, 1980

Claim

T Brg.

0°

Collar Dip

-45° to the north

Elev.

829 metres

Length

180 metres

Hole No. 80-1 Sheet 1

METERAGE		Description	Sample No.	Length	Analysis					
From	To									
0	6.4	Overburden - containing sandstone and granite boulders.								
6.4	76.0	Mudstone, interbedded to interlaminated with minor amounts of siltstone and fine to medium-grained sandstone. Greyish-black to black, occasionally light to medium grey, thin to medium bedded to very finely laminated. Soft - easily scratched by a knife blade. Non-calcareous, graphitic. Approximately 30% of the unit is laminated, and 70% is thin to medium bedded. The laminated sections vary in thickness from 0.5 to 50 cm, and occur irregularly distributed in an otherwise thin to medium bedded sequence. Approximately 25% of the bedding has been affected by scouring, soft sediment deformation, brecciation, and displacement along foliation planes. Pyrite occurs in many places throughout the unit, mainly as thin laminae, or in thin beds of disseminated crystals. Sphalerite and galena occurs in fine laminae to very thin beds, and occasionally in small knots, or in fine cross-cutting fractures. It is invariably associated with finely laminated pyrite. The mineralized intervals are as follows:								
		a. 16.5 a few laminae of galena across 1 cm.								
		b. 38.9 - 39.0 m - one 3 mm thick laminae of Pb-Zn								
		c. 39.5 - 39.6 m - massive Pb-Zn-Py - est. 40% combined Pb-Zn across 5 cm (true)								
		d. 40.5 - 40.7 m - disseminated crystals and small elongate blebs of galena. Est. 1% Pb across 10 cm (true)								
		e. 41.0 - 41.15m - laminae of sphalerite and galena and small blebs of galena. Est. 2% Pb across 10 cm (true).								

Drill Hole Record



Property FIN District Hole No. DDH-80-1

Commenced Location Tests at Hor. Comp.

Completed Core Size Corr. Dip Vert. Comp.

Co-ordinates True Brg. Logged by

Objective % Recov. Date

METERAGE		Description	Sample No.	Length	Analysis				
From	To				Claim	T Brg.	Collar Dip	Elev.	Length
	f. 41.7	- one 2 mm thick laminae of sphalerite and galena							
	g. 42.1 - 42.6 m	- laminated galena, sphalerite and pyrite, est. 25% combined Pb-Zn across 25 cm.							
	h. 44.0	- a few laminae of galena and sphalerite across 2 cm.							
	i. 45.1	- a few 1-2 mm thick laminae of Pb-Zn across 2 cm.							
	j. 45.4	- several 1-2 mm thick laminae of Pb-Zn across 5 cm.							
	k. 46.8	- a few laminae of Pb-Zn across 1 cm.							
	l. 63.9	- disseminated sphalerite across 5 cm.							
76.0 - 80.2		Interbedded mudstone, siltstone and sandstone, containing approximately 35% white quartz in fractures. The mudstone, etc., are medium grey to black in colour.							
80.2 - 109		Interbedded siltstone, sandstone and mudstone, light grey to greyish-black, occasionally black. The overall colour is medium grey. Thin to medium bedded, laminated in places. The unit is characterized by 5 to 20% sandstone which occurs in beds ranging in thickness from 1 mm up to 20 cm. The sandstone beds are the thickest and most abundant at the top of the unit, and the thinnest and least abundant at the base of the unit. The sandstone is light to medium grey, and has a black and white salt and pepper texture. The grains are mainly elongate and angular, and consist predominantly of chips of mudstone, chert, and occasionally limestone. The sandstone is fine to medium-grained, and generally thin to medium bedded, although it can also be laminated, and massive. In places it appears to fine							

Drill Hole Record



Property	FIN	District	Hole No.	DDH 80-1
Commenced		Location	Tests at	Hor. Comp.
Completed		Core Size	Corr. Dip	Vert. Comp.
Co-ordinates			True Brg.	Logged by
Objective			% Recov.	Date

Claim

T Brg.

Collar Dip

Elev.

Length

Hole No. 80-1 Sheet 3

METERAGE		Description	Sample No.	Length	Analysis					
From	To									
		upwards into siltstones and mudstones in cycles, suggesting deposition by turbidites. Up to a few percent pyrite occurs within the sandstones as disseminated crystals.								
		Approximately 5% of the unit consists of black mudstones. The remaining 75 to 90% of the unit consists of medium grey silty mudstones and siltstones. All of the rocks comprising the unit can be easily scratched with a knife. A few of the sandstone beds are very weakly calcareous, while the mudstones and siltstones are non-calcareous.								
109	163.1	Siltstone and mudstone, with minor sandstone, laminated to thin bedded, siltstone constitutes 70% of the unit, mudstone 25% and sandstone 5%. The rocks are light grey to black, and in general are dark grey. The sandstone occurs in laminae in beds up to 2 cm in thickness. The rocks can be scratched relatively easily with a knife. The sandstones are usually weakly to moderately calcareous.								
163.1	174	Siltstone, sandstone and mudstone, laminated - with the laminated nature clearly defined by colour banding. Colour ranges from light grey to black, and in general in dark grey. Siltstone to silty mudstone constitutes 80 to 85% of the unit, sandstone 5 to 10% and mudstone 10%. The sandstone occurs throughout in laminae and thin beds up to 1.0 cm in thickness. A few of the sandstone beds are weakly to moderately calcareous. All of the rocks are easily scratched by a knife. The interlaminated nature of the sandstone, siltstone and mudstone suggests deposition by turbidites.								
174	180	Siltstone and sandstone with minor sandstone, laminated to thin-bedded. The rocks are light grey								

Scale

Colour Plot
& Dips

Drill Hole Record



Property	FIN	District	Hole No.	DDH 80-1
Commenced		Location	Tests at	Hor. Comp.
Completed		Core Size	Corr. Dip	Vert. Comp.
Co-ordinates			True Brg.	Logged by
Objective			% Recov.	Date

Claim	T Brg.	Collar Dip	Elev.	Length	Hole No. 80-1 Sheet 5
-------	--------	------------	-------	--------	-----------------------

METERAGE		Description	Measurement	Sample No.	Length m	Analysis oz/ton			
From	To					Pb%	Zn%	Ag	Cd%
			16.5 - 16.7	63522	0.2	0.08	0.73	0.16	0.01
			38.0 - 38.5	63523	0.5	0.12	0.16	0.11	<0.01
			38.5 - 39.0	63524	0.5	0.15	0.55	0.35	0.01
			39.0 - 39.5	63525	0.5	0.24	0.40	0.21	<0.01
			39.5 - 39.6	63526	0.1	5.15	5.90	2.60	0.20
			39.6 - 40.0	63531	0.4	0.02	0.04	0.08	<0.01
			40.0 - 40.5	63527	0.5	0.12	0.38	0.38	<0.01
			40.5 - 41.0	63528	0.5	0.41	1.04	0.37	0.01
			41.0 - 41.5	63529	0.5	0.04	0.02	0.10	<0.01
			41.5 - 42.1	63530	0.6	0.11	0.20	0.14	<0.01
			42.1 - 42.6	63502	0.5	2.90	1.40	1.67	0.26
			42.6 - 43.1	63503	0.5	0.14	1.25	0.28	0.02
			43.1 - 43.6	63504	0.5	0.05	0.54	0.11	<0.01
			43.6 - 44.0	63505	0.4	0.08	0.32	0.13	<0.01
			44.0 - 44.5	63506	0.5	0.28	2.00	0.30	0.03
			44.5 - 45.0	63507	0.5	0.12	0.73	0.14	0.01
			45.0 - 45.5	63508	0.5	0.12	0.65	0.17	0.01
			47.5 - 48.5	63509	1.0	0.04	0.38	0.12	<0.01
			50.0 - 50.5	63510	0.5	0.03	0.10	0.10	<0.01
			50.5 - 51.0	63511	0.5	0.04	0.13	0.20	<0.01
			51.0 - 52.0	63512	1.0	0.06	0.14	0.11	<0.01
			55.0 - 55.2	63514	0.2	0.55	0.01	0.12	<0.01

Scale

Colour Plot
& Dips

Drill Hole Record



Property	FIN	District	Hole No.	80-1
Commenced		Location	Tests at	Hor. Comp.
Completed		Core Size	Corr. Dip	Vert. Comp.
Co-ordinates			True Brg.	Logged by
Objective			% Recov.	Date

Claim

T Brg.

Collar Dip

Elev.

Length

Hole No. 80-1 Sheet 7

Footage From	To	Description	ROCK GEOCHEM SAMPLES												Sample No.	Length	Analysis				
		Sample No.	Pb ppm	Zn ppm	Ag ppm	Cd ppm	Mn ppm	Ba ppm	Sample No.	Pb ppm	Zn ppm	Ag ppm	Cd ppm	Mn ppm	Ba ppm						
		7 - 8 m	640	1250	1.8	17.	200	2890	26 - 27 m	370	2910	2.2	27.	165	1860						
		8 - 9	550	6000	2.4	47.	255	2480	27 - 28	340	2130	1.4	19.	155	1820						
		9 -10	590	7000	3.0	60.	145	2480	28 - 29	730	1440	1.9	17.	200	1330						
		10 -11	215	330	1.0	3.0	190	2250	29 - 30	330	920	1.0	11.	250	1610						
		11 -12	565	385	1.8	40.	225	2120	30 - 31	635	4000	1.7	43.	305	1720						
		12 -13	1020	11200	3.3	91.	150	2150	31 - 32	280	740	0.8	6.3	535	1370						
		13 -14	240	510	0.8	4.8	265	1870	32 - 33	182	125	1.0	0.3	680	1400						
		14 -15	1040	7450	2.8	64.	320	1710	33 - 34	380	1050	1.2	16.	475	1420						
		15 -16	173	260	0.6	2.5	370	1520	34 - 35	1710	430	2.6	7.0	470	1130						
		16 -17	440	134	2.0	17.	340	1540	35 - 36	1560	800	2.5	9.3	435	1210						
		17 -18	450	1960	3.4	54.	490	1490	36 - 37	525	500	1.9	7.3	395	1510						
		18 -19	375	310	1.4	2.0	500	1070	37 - 38	505	195	2.4	2.1	270	1300						
		19 -20	380	580	1.4	7.1	320	1520	38 - 39	1340	4600	7.8	78.	230	2030						
		20 -21	550	710	2.0	7.5	380	1440	39 - 40	420	600	3.4	12.	405	1770						
		21 -22	560	640	0.8	6.5	325	1210	40 - 41	2500	5350	5.8	72.	280	1900						
		22 -23	225	460	1.5	3.4	380	1410	41 - 42	2900	6500	6.8	>100.	365	1860						
		23 -24	260	1400	1.6	15.	205	1730	42 - 43	6800	>20000	19.	>100.	210	2350						
		24 -25	665	1520	1.9	17.	155	1800	43 - 44	980	6600	4.7	93.	200	2110						
		25 -26	670	3750	2.4	34.	180	1900	44 - 45	660	2350	2.4	29.	230	2000						

Drill Hole Record



Property	FIN	District	Hole No.	80-1	Claim	T Brg.	Collar Dip	Elev.	Length										
Commenced		Location	Tests at	Hor. Comp.															
Completed		Core Size	Corr. Dip	Vert. Comp.															
Co-ordinates			True Brg.	Logged by															
Objective			% Recov.	Date															
Footage	ROCK GEOCHEM SAMPLES										Sample No.	Length	Analysis						
From	To																		
		Pb	Zn	Ag	Cd	Mn	Ba	Pb	Zn	Ag	Cd	Mn	Ba						
	Sample No.	ppm	ppm	ppm	ppm	ppm	ppm	ppm	ppm	ppm	ppm	ppm	ppm						
	45 - 46 m	1700	15500	10.	>100.	200	2150	65 - 66 m	33	340	1.0	4.9	160	2190					
	46 - 47	1660	12500	7.3	>100.	200	2100	66 - 70	38	240	1.0	3.1	140	2140					
	47 - 48	1370	9000	4.6	84.	240	1750	70 - 71	63	710	1.0	8.0	160	2380					
	48 - 49	540	1850	1.6	21.	415	1270	71 - 72	46	370	0.7	4.4	145	2440					
	49 - 50	240	155	1.3	0.8	430	1310	72 - 73	304	915	1.5	11.	160	2150					
	50 - 51	360	860	1.6	10.	295	1870	73 - 74	91	183	0.6	1.6	655	2280					
	51 - 52	380	900	2.0	12.	320	1740	74 - 75	108	630	0.8	7.2	200	2520					
	52 - 53	1140	2400	2.7	24.	215	2280	75 - 76	23	280	0.6	3.5	300	2130					
	53 - 54	700	3500	2.8	39.	380	1750	76 - 77	33	200	0.8	1.6	110	2480					
	54 - 55	1550	220	2.2	1.3	510	1000	77 - 78	14	205	0.2	2.0	230	790					
	55 - 56	490	270	1.4	2.3	390	1320	78 - 79	12	154	0.4	0.9	160	1780					
	56 - 57	960	10500	5.8	>100.	235	1970	79 - 80	19	174	0.4	0.7	95	2510					
	57 - 58	520	4700	3.2	46.	250	1860	80 - 85	18	216	0.6	0.9	195	1960					
	58 - 59	570	560	1.2	6.9	355	1010	85 - 90	18	174	0.2	0.5	180	1860					
	59 - 60	590	1000	1.0	11.	350	1180	90 - 95	19	155	0.2	0.5	205	1750					
	60 - 61	373	780	0.6	5.1	260	1160	95 -100	20	161	0.2	0.2	190	1800					
	61 - 62	2600	19000	10.	>100.	210	1660	100-105	20	167	0.5	0.4	180	1750					
	62 - 63	520	2800	2.6	30.	180	1950	105-110	20	176	0.4	0.3	195	1820					
	63 - 64	193	560	1.2	6.8	260	1920	110-115	19	166	0.4	0.4	200	1860					
	64 - 65	74	240	1.2	3.2	170	2100	115-120	21	190	0.5	0.5	190	1830					

Scale

Colour Plot
& Dip

Drill Hole Record



Property	FIN	District	Hole No.	DDH-80-1
Commenced	Location		Tests at	Hor. Comp.
Completed	Core Size		Corr. Dip	Vert. Comp.
Co-ordinates			True Brg.	Logged by
Objective			% Recov.	Date

Claim

T Brg.

Collar Dip

Elev.

Length

Hole No. DDH80-1 Sheet 1 of 1

METERAGE		Description	RUNS AND SHORTS				Sample No.	Length	Analysis								
From	To		Interval Width	Recovered	From - To	Interval Width			Recovered								
0	6.4	overburden			29.3 - 30.5	1.2	1.14										
6.4	7.0		.6	.2	30.5 - 32.6	2.1	.53										
7.0	7.6		.6	.3	32.6 - 33.2	.6	.23										
7.6	8.5		.9	.4	33.2 - 33.5	.3	.15										
8.5	9.4		.9	.5	33.5 - 34.7	1.2	.15										
9.4	10.4		.8	.3	34.7 - 35.7	1.0	1.5										
10.4	11.9		1.5	.1	35.7 - 36.3	.6	.38										
11.9	12.5		.6	.3	36.3 - 37.8	1.5	1.45										
12.5	13.4		.9	.2	37.8 - 38.6	.8	.9										
13.4	14.8		1.4	.9	38.6 - 40.4	1.8	1.3										
14.8	15.5		.7	.4	40.4 - 41.4	1.0	.53										
15.5	16.3		.8	.5	41.4 - 43.0	1.9	1.6										
16.3	17.8		1.5	.2	43.0 - 43.7	.7	.9										
17.8	18.6		.8	.15	43.7 - 45.4	1.7	1.7										
18.6	20.4		1.8	1.4	45.4 - 45.7	.3	.08										
20.4	21.6		1.2	1.3	45.7 - 46.6	.9	.38										
21.6	23.2		1.6	1.3	46.6 - 47.5	.9	.69										
23.2	24.7		1.5	1.3	47.5 - 48.5	1.0	.79										
24.7	26.2		1.5	1.4	48.5 - 49.7	1.2	1.6										
26.2	27.7		1.5	1.1	49.7 - 50.6	.9	1.1										
27.7	29.3		1.6	.07	50.6 - 51.2	.6	.38										

Scale

Colour Plot
& Dips

Drill Hole Record



Property	FIN	District	Hole No.	DDH-80-1
Commenced	Location		Tests at	Hor. Comp.
Completed	Core Size		Corr. Dip	Vert. Comp.
Co-ordinates			True Brg.	Logged by
Objective			% Recov.	Date

Claim

T Brg.

Collar Dip

Elev.

Length

Hole No. DDH80-1 Sheet 11

From	METERAGE To	Description	RUNS AND SHORTS				Sample No.	Length	Analysis						
			Interval Width	Recovered	From - To	Interval Width	Recovered								
51.2	53.9		2.7	2.5	84.7 - 85.6	.9	.37								
53.9	55.9		2.0	1.5	85.6 - 88.8	3.2	2.9								
55.9	57.3		1.4	.9	88.8 - 90.5	1.7	1.5								
57.3	59.1		1.8	1.2	90.5 - 91.4	.9	.85								
59.1	60.0		.9	.9	91.4 - 92.8	1.4	1.2								
60.0	61.6		1.6	.4	92.8 - 94.5	1.7	1.5								
61.6	64.3		2.7	.99	94.5 - 96.2	1.7	1.5								
64.3	65.5		1.2	.3	96.2 - 97.1	.9	.67								
65.5	66.8		1.3	.15	97.1 - 98.5	1.4	.8								
66.8	70.6		3.8	.1	98.5 - 99.7	1.2	.8								
70.6	71.6		1.0	.40	99.7 - 100.6	.9	.5								
71.6	73.2		1.6	.46	100.6 - 101.3	.7	.6								
73.2	75.6		2.4	.8	101.3 - 103.0	1.7	1.0								
75.6	75.9		.3	.15	103.0 - 103.6	.6	.09								
75.9	78.0		2.1	.38	103.6 - 105.0	1.4	.8								
78.0	78.9		.9	.37	105.0 - 106.1	1.1	.15								
78.9	79.6		.7	.38	106.1 - 107.5	1.4	.8								
79.6	81.4		1.8	1.5	107.5 - 108.8	1.3	1.0								
81.4	82.9		1.5	1.46	108.8 - 110.0	1.2	.9								
82.9	84.1		1.2	.8	110.0 - 111.2	1.2	.6								
84.1	84.7		.6	.5	111.2 - 113.1	1.9	1.5								

Scale

Colour Plot
& Dips

Drill Hole Record



Property	FIN	District	Hole No.	DDH-80-1
Commenced		Location	Tests at	Hor. Comp.
Completed		Core Size	Corr. Dip	Vert. Comp.
Co-ordinates			True Brg.	Logged by
Objective			% Recov.	Date

Claim

T Brg.

Collar Dip

Elev.

Length

Hole No. DDH80 - Sheet 12

METERAGE		Description				Sample No.	Length	Analysis				
From	To	Interval Width	Recovered	From - To	Interval Width	Recovered						
		RUNS AND SHORTS										
113.1	114.6	1.5	1.5	150.9 - 152.4	1.5	1.1						
114.6	117.6	3.0	3.0	152.4 - 153.3	.9	.3						
117.6	119.2	1.6	1.2	153.3 - 154.8	1.5	.6						
119.2	120.5	1.3	1.2	154.8 - 155.8	1.0	.53						
120.5	121.5	1.0	.5	155.8 - 157.3	1.5	1.4						
121.5	123.0	1.5	1.4	157.3 - 158.5	1.2	.5						
123.0	124.5	1.5	1.46	158.5 - 160.0	1.5	1.5						
124.5	126.2	1.7	1.5	160.0 - 160.9	.9	.79						
126.2	127.7	1.5	1.5	160.9 - 162.0	1.1	.8						
127.7	129.5	1.8	1.49	162.0 - 163.4	1.4	1.2						
129.5	132.6	3.1	2.7	163.4 - 165.5	2.1	1.8						
132.6	134.3	1.7	1.2	165.5 - 166.9	1.4	1.2						
134.3	135.8	1.5	1.49	166.9 - 170.1	3.2	2.8						
135.8	137.2	1.4	1.4	170.1 - 171.5	1.4	1.04						
137.2	138.7	1.5	.82	171.5 - 174.3	2.8	2.86						
138.7	141.7	3.0	3.0	174.3 - 176.2	1.9	1.6						
141.7	143.3	1.6	1.2	176.2 - 177.9	1.7	.76						
143.3	144.8	1.5	1.4	177.9 - 178.8	.9	.4						
144.8	146.3	1.5	.5	178.8 - 179.8	1.0	.9						
146.3	147.8	1.5	1.1	END OF HOLE								
147.8	150.9	3.1	2.3									
						Recovery:	69.4%					

Drill Hole Record



Property	FIN	District	Watson Lake M.D.	Hole No.	DDH-80-2
Commenced	June 14, 1980	Location	180 km north of Watson	Tests at	None
Completed	June 17, 1980	Core Size	NQ	Corr. Dip	-60° to the south
Co-ordinates	99,887N & 99,995E			True Brg.	180°
Objective	To test the down dip continuity of the main showing mineralized zone.			% Recov.	78.3%
				Date	June 17, 1980

Footage		Description	Sample No.	Length	Analysis									
From	To													
0.0	6.5	Overburden												
6.5	65.0	Mudstone to silty mudstone with minor siltstone - (approx. 60% mudstone and 40% silty mudstone), laminated to thin bedded, weakly to moderately calcareous in places, occasional laminae on thin bed which is quite calcareous, overall colour is greyish-black. The mudstones are black, the siltstones are light to medium grey. Laminated pyrite occurs randomly throughout the upper 2/3's of the unit - it is not possible to determine whether pyrite continues to the end of the unit because the section from 52.0 to 65.0 is highly crushed. The rock in this section consists of rock flour and fine chips. From 55.0 to 55.4 m the crushed section carries abundant white quartz. At 20.2 m disseminated euhedral pyrite occurs within very calcareous mudstone - likely one of the pyritic calcareous nodules observed in outcrop. Mineralization was observed in the following locations: 14.7 to 14.9 - a few light grey laminae of galena/sphalerite. They are associated with laminated pyrite, and occur over a 10 cm thick interval. 15.5 to 16.5 - a few laminae of galena and sphalerite associated with laminated pyrite. 18.9 - two very fine laminae of galena/sphalerite. 24.1 - minor disseminated galena adjacent to a calcareous bed. 25.80 - 25.85- minor amounts of galena in a very fine shear. 27.7 - minor galena in a hairline fracture. 28.2 - a few laminae of pyrite and galena/sphalerite across 2 cm.												

Claim

T Brg.

0°

Collar Dip -60° to the south

Elev.

829 metres

Length

121 metres

Hole No. 80-2 Sheet 1

Drill Hole Record



Property	FIN	District	Hole No.	DDH-80-2
Commenced		Location	Tests at	Hor. Comp.
Completed		Core Size	Corr. Dip	Vert. Comp.
Co-ordinates			True Brg.	Logged by
Objective			% Recov.	Date

Claim

T Brg.

Collar Dip

Elev.

Length

Hole No. 80-2 Sheet 2

XXXXX From	METERAGE To	Description	Sample No.	Length	Analysis				
	29.4 - 29.5	several laminae of galena/sphalerite across 2 cm.							
	30.0 - 30.5	a few laminae of Pb-Zn associated with pyrite across 5 cm.							
	31.0 - 31.45	mudstone containing laminae of galena/sphalerite associated with laminated CaCO ₃ and laminated to disseminated pyrite. The mineralization occurs in several 1-3 cm thick beds. The CaCO ₃ is euhedrally crystalline and medium-grained. Estimated grade is 5% combined across a true thickness of 25 cm.							
	31.45 - 31.70	laminated high-grade galena/sphalerite, consists of interlaminated carbonate, pyrite and galena/sphalerite. Estimated composition of the rock: 50% carbonate, 25% pyrite, 25% sphalerite/galena. Estimated grade: 20% combined Pb-Zn across 20 cm (true thickness). The lower contact between the high-grade and the underlying mudstones is sharp, i.e. it occurs across a thickness of 1 cm. The upper contact is gradational - (see description of the 31.45 to 31.70 unit).							
	33.0	a few laminae of galena/sphalerite within mudstones containing clasts of pyrite and carbonate.							
	37.0 - 43.6	mudstone containing approximately 5% finely laminated pyrite, which in some places appears to be associated with minor amounts of galena/sphalerite.							
	65.0 - 79.5	Silty mudstone to siltstone, with minor mudstone and 0.5 to 5.0% sandstone, distinctly inter-laminated to interbedded - as defined by colour and grain size variations. The sandstone occurs in laminae or very thin beds. Colour varies from light grey to black. The overall colour is dark grey. The unit is non-calcareous.							

Drill Hole Record



Property	FIN	District	Hole No.	DDH-80-2
Commenced	Location		Tests at	Hor. Comp.
Completed	Core Size		Corr. Dip	Vert. Comp.
Co-ordinates			True Brg.	Logged by
Objective			% Recov.	Date

Claim	T Brg.	Collar Dip	Elev.	Length	Hole No. 80-2	Sheet 3
-------	--------	------------	-------	--------	---------------	---------

METERAGE		Description	Sample No.	Length	Analysis									
From	To													
79.5	111.5	Silty mudstone to siltstone, containing minor mudstone (approximately 2%), and 5-20% sandstone in beds ranging in thickness from less than 1 cm up to 20 cm. The upper two-thirds of the unit consists of 10 to 20% sandstone, while the lower one-third consists of approximately 5% sandstone. The upper contact is coincident with a 5-10 cm thick sandstone bed, the lower contact coincides with a 10 cm thick sandstone bed.												
		The sandstone consists of approximately 50% fine to medium-grained white chert, and subordinate amounts of argillite. The clasts are distinctly angular and elongate. The matrix is medium to dark grey. The sandstone salt and pepper texture, and contains up to 5% disseminated euhedral pyrite.												
		The unit is generally thin to medium bedded, but occasionally massive to laminated.												
		Fine veinlets of a white to yellowish mineral which is possibly siderite, cuts the rocks in places. Approximately 35% of the unit is crushed through shearing - and consists only of rock flour and fine chips.												
		The thin interbedding of the sandstone, siltstone and silty mudstone suggests deposition by turbidites - however, there are not many clear cut instances of upwards fining of grain size, from sandstone through to mudstone.												
111.5	121	Silty mudstone to siltstone - similar to the 65.0 to 79.5 unit.												

Scale

Colour Plot
& Dip

Drill Hole Record



Property	FIN	District	Hole No.	80-2
Commenced		Location	Tests at	Hor. Comp.
Completed		Core Size	Corr. Dip	Vert. Comp.
Co-ordinates		True Brg.	Logged by	
Objective		% Recov.	Date	

Footage From To	Description	Sample No.	Length m	Analysis gm/ton			
				Pb%	Zn%	Ag	Cd%
	ASSAYS OF CORE SPLITS						
			Measurement (metres)				
			14.7 - 14.9	63538	0.2	0.060.78	0.21 0.01
			15.5 - 16.0	63539	0.5	0.060.11	0.10 < 0.01
			16.0 - 16.5	63540	0.5	0.040.08	0.08 < 0.01
			17.5 - 17.65	63541	0.15	0.010.04	0.04 < 0.01
			18.9 - 18.95	63542	0.05	0.090.79	0.14 0.01
			28.5 - 29.0	63854	0.5	0.100.69	0.14 0.01
			29.0 - 29.5	63855	0.5	0.050.68	0.11 0.01
			29.5 - 30.0	63856	0.5	0.101.48	0.11 0.02
			30.0 - 30.5	63857	0.5	0.081.12	0.08 0.01
			30.5 - 31.0	63537	0.5	0.644.65	0.44 0.08
			31.0 - 31.45	63536	0.45	0.271.35	0.14 0.02
			31.45- 31.70	63532	0.25	5.4529.00	1.53 0.53
			31.70- 32.0	63533	0.30	0.100.35	0.10 < 0.01
			32.0 - 32.5	63534	0.50	0.060.31	0.04 < 0.01
			32.5 - 33.0	63535	0.5	0.171.44	0.20 0.02
			37.0 - 37.5	63543	0.5	0.040.24	0.06 < 0.01
			37.5 - 38.0	63544	0.5	0.020.15	0.05 < 0.01
			38.0 - 38.5	63545	0.5	0.020.15	0.04 < 0.01
			38.5 - 39.0	63546	0.5	0.020.07	0.04 < 0.01
			39.0 - 39.5	63547	0.5	0.020.07	0.05 < 0.01
			39.5 - 40.0	63548	0.5	< 0.010.04	0.04 < 0.01

Drill Hole Record



Property	FIN	District	Hole No.	80-2
Commenced		Location	Tests at	Hor. Comp.
Completed		Core Size	Corr. Dip	Vert. Comp.
Co-ordinates			True Brg.	Logged by
Objective			% Recov.	Date

Claim

T Brg.

Collar Dip

Elev.

Length

Hole No. 80-2 Sheet 6

Footage		ROCK GEOCHEM SAMPLES														Sample No.		Length		Analysis					
From	To	Sample No.	Cu ppm	Zn ppm	Ag ppm	Cd ppm	Mn ppm	Ba ppm	Pb ppm	Sample No.	Cu ppm	Zn ppm	Ag ppm	Cd ppm	Mn ppm	Ba ppm	Pb ppm								
		6.5 - 8.0	79	695	0.8	6.1	320	610	650	28.0 - 29.0	50	4000	3.0	78.	195	1960	820								
		8.0 - 9.0	47	2900	1.7	34.	230	1700	540	29.0 - 30.0	41	8600	2.8	99.	250	1800	790								
		9.0 -10.0	29	825	0.6	8.6	275	1490	160	30.0 - 31.0	68	18000	6.0	>100.	170	2350	1180								
		10.0 -11.0	31	905	0.6	13.	210	1740	200	31.0 - 32.0	96	>20000	26.	>100.	310	3000	>20000								
		11.0 -12.0	47	222	0.8	1.3	400	860	240	32.0 - 33.0	42	5100	2.9	64.	260	2050	780								
		12.0 -13.0	33	610	0.8	7.9	330	1490	320	33.0 - 34.0	40	3000	1.7	42.	405	1460	980								
		13.0 -14.0	62	10500	4.8	>100.	185	1840	1080	34.0 - 35.0	45	2000	1.6	28.	195	2090	470								
		14.0 -15.0	69	13500	6.5	>100.	250	2200	2400	35.0 - 36.0	41	1570	1.3	21.	210	2020	340								
		15.0 -16.0	22	212	0.4	2.0	315	1960	150	36.0 - 37.0	39	1310	0.9	13.	200	1960	360								
		16.0 -17.0	44	331	0.4	2.4	270	1130	220	37.0 - 38.0	48	3100	1.5	31.	195	2210	260								
		17.0 -18.0	41	2400	1.5	41.	260	1750	800	38.0 - 39.0	43	590	0.5	5.9	170	2220	200								
		18.0 -19.0	42	3000	2.1	47.	215	1910	440	39.0 - 40.0	42	955	0.8	10.	185	2240	360								
		19.0 -20.0	40	1245	0.8	17.	345	1890	310	40.0 - 41.0	35	223	0.4	1.6	195	2000	120								
		20.0 -21.0	36	1050	0.9	9.3	920	750	560	41.0 - 42.0	41	430	0.7	4.8	195	2160	100								
		21.0 -22.0	33	880	1.0	12.	300	1030	880	42.0 - 43.0	43	755	1.0	8.1	190	2230	120								
		22.0 -23.0	30	845	1.2	11.	410	1480	1260	43.0 - 44.0	40	425	0.6	4.9	210	2090	320								
		23.0 -24.0	36	545	1.4	7.4	425	1490	1540	44.0 - 45.0	35	475	1.0	6.4	225	1870	520								
		24.0 -25.0	31	450	1.4	4.8	650	840	2500	45.0 - 46.0	33	1075	1.3	14.	230	1890	480								
		25.0 -26.0	27	885	0.7	7.8	270	1210	270	46.0 - 47.0	40	1485	1.9	14.	180	2050	360								
		26.0 -27.0	29	1910	0.8	31.	345	1410	780	47.0 - 48.0	66	10000	4.4	100.	155	2320	780								
		27.0 -28.0	30	330	0.3	3.4	265	700	760	48.0 - 49.0	57	6900	3.0	99.	530	1910	620								

Drill Hole Record



Property	FIN	District	Hole No.	80-2
Commenced	Location		Tests at	Hor. Comp.
Completed	Core Size		Corr. Dip	Vert. Comp.
Co-ordinates			True Brg.	Logged by
Objective			% Recov.	Date

Claim

T Brg.

Collar Dip

Elev.

Length

Hole No. 80-2 Sheet 7

Footage		Description	ROCK GEOCHEM SAMPLES							Sample No.	Length	Analysis				
From	To		Cu	Zn	Ag	Cd	Mn	Ba	Pb							
		Sample No.	ppm	ppm	ppm	ppm	ppm	ppm	ppm							
		49.0 - 50.0	38	6700	2.8	>100.	285	1840	1170							
		50.0 - 51.0	47	1490	1.5	28.	255	1240	1460							
		51.0 - 52.0	36	2900	1.4	48.	300	1510	1210							
		52.0 - 53.0	46	940	0.6	10.	260	2280	160							
		53.0 - 54.0	41	245	0.2	1.3	235	2690	40							
		54.0 - 55.0	51	258	0.2	1.4	100	3060	20							
		55.0 - 56.0	38	259	0.2	1.5	165	2420	20							
		56.0 - 57.0	45	277	0.2	1.4	175	2510	30							
		57.0 - 58.0	51	358	0.2	1.9	135	2380	30							
		58.0 - 59.0	46	266	0.2	1.4	165	2370	30							
		59.0 - 60.0	46	280	0.3	1.3	130	2310	30							
		60.0 - 61.0	45	312	0.3	1.5	150	2240	40							
		61.0 - 62.0	40	238	0.2	1.0	165	2060	40							
		62.0 - 63.0	44	213	0.3	1.0	130	1900	40							
		63.0 - 64.0	49	325	0.2	1.8	135	2280	40							
		64.0 - 65.0	46	272	0.2	1.3	135	2450	20							

Drill Hole Record



Property	FIN	District	Hole No.	DDH-80-2
Commenced		Location	Tests at	Hor. Comp.
Completed		Core Size	Corr. Dip	Vert. Comp.
Co-ordinates			True Brg.	Logged by
Objective			% Recov.	Date

Claim

T Brg.

Collar Dip

Elev.

Length

Hole No. 80-2 Sheet 8

METERAGE		Description						Sample No.	Length	Analysis				
From	To	Core Recovery DDH-80-2 (all measurements in metres)												
		From	To	Interval Width	Recovered	From	To	Interval Width	Recovered					
		7.3	8.8	1.5	.5	25.1	25.9	.8	.6					
		8.8	10.1	1.3	.3	25.9	26.5	.6	.37					
		10.1	11.8	1.7	.18	26.5	27.7	1.2	.24					
		11.8	12.2	.4	.3	27.7	28.2	.5	.12					
		12.2	13.1	.9	.3	28.2	29.0	.8	.5					
		13.1	13.7	.6	.3	29.0	30.0	1.0	.55					
		13.7	14.9	1.2	.70	30.0	30.8	.8	.6					
		14.9	16.2	1.3	1.1	30.8	31.7	.9	.70					
		16.2	16.9	.7	.6	31.7	32.8	1.1	.9					
		16.9	17.5	.6	.43	32.8	33.8	1.0	.9					
		17.5	17.8	.3	.2	33.8	34.7	.9	.9					
		17.8	18.1	.3	.12	34.7	35.7	1.0	.85					
		18.1	18.8	.7	.37	35.7	36.9	1.2	1.1					
		18.8	20.0	1.2	.9	36.9	38.4	1.5	1.4					
		20.0	20.1	.1	.09	38.4	38.7	.3	.15					
		20.1	20.4	.3	.3	38.7	40.7	2.0	1.5					
		20.4	21.0	.6	.5	40.7	42.2	1.5	1.2					
		21.0	21.6	.6	.53	42.2	43.6	1.4	1.3					
		21.6	22.6	1.0	.64	43.6	44.5	.9	.8					
		22.6	24.1	1.5	1.5	44.5	45.3	.8	.8					
		24.1	25.1	1.0	.6	45.3	46.0	.7	.73					

Drill Hole Record



Colour Plot & Dips

Property	FIN	District	Hole No.	DDH-80-2
Commenced	Location		Tests at	Hor. Comp.
Completed	Core Size		Corr. Dip	Vert. Comp.
Co-ordinates	True Brg.		Logged by	
Objective	% Recov.		Date	

Claim
T Brg.
Collar Dip
Elev.
Length
Hole No. 80-2 Sheet 9

METERAGE		Description						Sample No.	Length	Analysis				
From	To	Core Recovery DDH-80-2 (all measurements in metres).												
		From	To	Interval Width	Recovered	From	To	Interval Width	Recovered					
		46.0	46.9	.9	.82	73.2	74.7	1.5	.9					
		46.9	47.9	1.0	.70	74.7	76.2	1.5	.8					
		47.9	48.6	.7	.73	76.2	77.6	1.4	.67					
		48.6	49.5	.9	.82	77.6	78.3	.7	.8					
		49.5	50.7	1.2	.9	78.3	79.5	1.2	1.16					
		50.7	52.1	1.4	.8	79.5	81.1	1.6	1.43					
		52.1	53.9	1.8	.9	81.1	82.1	1.0	.9					
		53.9	55.5	1.6	1.2	82.1	83.7	1.6	1.1					
		55.5	57.2	1.7	1.5	83.7	85.3	1.6	1.0					
		57.2	58.2	1.0	.9	85.3	87.9	2.6	1.2					
		58.2	59.7	1.5	1.4	87.9	88.9	1.0	.79					
		59.7	61.3	1.6	1.4	88.9	90.5	1.6	.6					
		61.3	62.0	.7	.7	90.5	92.0	1.5	1.4					
		62.0	63.7	1.7	1.46	92.0	93.6	1.6	1.46					
		63.7	64.8	1.1	.8	93.6	95.1	1.5	1.49					
		64.8	66.3	1.5	1.55	95.1	96.6	1.5	1.5					
		66.3	67.4	1.1	.9	96.6	97.7	1.1	1.04					
		67.4	68.9	1.5	1.49	97.7	99.1	1.4	1.2					
		68.9	70.4	1.5	1.4	99.1	100.7	1.6	1.4					
		70.4	71.8	1.4	.9	100.7	102.6	1.9	1.46					
		71.8	73.2	1.4	1.3	102.6	104.2	1.6	1.5					

Drill Hole Record



Property **FIN** District _____ Hole No. **DDH-80-2**

Commenced _____ Location _____ Tests at _____ Hor. Comp. _____
 Completed _____ Core Size _____ Corr. Dip _____ Vert. Comp. _____
 Co-ordinates _____ True Brg. _____ Logged by _____
 Objective _____ % Recov. _____ Date _____

Claim _____ T Brg. _____ Collar Dip _____ Elev. _____ Length _____
 Hole No. 80-2 Sheet 10

METERAGE		Description Interval Width	Recovered	Sample No.	Length	Analysis									
From	To														
104.2	105.8	1.6	1.4												
105.8	107.1	1.3	1.1												
107.1	107.4	.8	.8												
107.9	109.3	1.4	1.2												
109.3	110.3	1.0	1.1												
110.3	112.0	1.7	1.4												
112.0	113.1	1.1	.85												
113.1	114.3	1.2	1.0												
114.3	115.5	1.2	1.1												
115.5	117.5	2.0	1.98												
117.5	119.0	1.5	1.4												
119.0	120.1	1.1	1.1												
120.1	121.0	.9	.7												
-															
		END OF HOLE	Recovery 78.3%												

Rw

Drill Hole Record



Property		District							Hole No.					Claim	T Brg.	Collar Dip	Elev.	Length	Hole No.		
Commenced		Location							Tests at											Hor. Comp.	
Completed		Core Size							Corr. Dip											Vert. Comp.	
Co-ordinates		True Brg.							Logged by												
Objective		% Recov.							Date												
Footage		Description											Sample No.		Length		Analysis				
From	To	ROCK GEOCHEM											Cd	Mn	Ba	Cu					
		Pb	Zn	Ag	Cd	Mn	Ba	Cu	Sample No.	Pb	Zn	Ag	Cd	Mn	Ba	Cu					
		ppm	ppm	ppm	ppm	ppm	ppm	ppm		ppm	ppm	ppm	ppm	ppm	ppm	ppm					
	6.6 - 8.0	850	3600	2.0	42	170	1940	29	28.5 - 31.0	20	308	0.2	1.4	145	2330	50					
	8.0 - 9.0	520	3100	1.4	34	210	1870	33	31.0 - 34.0	30	281	0.2	1.3	130	2340	45					
	9.0 -10.0	400	2200	1.6	25	215	1810	36	34.0 - 37.0	30	252	0.2	1.0	200	2200	50					
	10.0 -11.0	290	500	0.4	5.8	290	910	29	37.0 - 40.0	20	216	0.2	0.9	125	2280	45					
	11.0 -12.0	280	3100	0.7	41	425	870	30	40.0 - 43.0	20	228	0.2	0.9	190	1870	44					
	12.0 -13.0	280	1970	1.1	20	210	1810	32	43.0 - 46.0	20	158	0.2	0.6	165	1680	38					
	13.0 -14.0	240	2350	1.4	25	195	2160	35	46.0 - 49.0	20	148	0.2	0.6	240	1320	34					
	14.0 -15.0	210	1525	1.3	16	205	2100	35	49.0 - 52.0	20	169	0.2	0.5	180	1760	40					
	15.0 -16.0	90	770	1.1	9.2	150	2260	36	52.0 - 55.0	20	176	0.2	0.5	170	1700	39					
	16.0 -17.0	50	238	0.6	2.5	145	2300	35	55.0 - 58.0	20	181	0.2	0.5	210	1770	43					
	17.0 -18.0	120	305	1.0	3.4	125	2430	32	58.0 - 59.9	20	176	0.2	0.5	200	2190	43					
	18.0 -19.0	40	349	0.6	3.8	120	2320	40													
	19.0 -20.0	40	245	0.2	1.5	160	2230	40													
	20.0 -21.0	40	282	0.3	1.7	120	2180	42													
	21.0 -22.0	30	272	0.3	1.5	140	2140	41													
	22.0 -23.0)	40	248	0.3	1.4	120	2190	41													
	23.0 -24.0)																				
	24.0 -25.0	40	246	0.2	1.3	115	2240	44													
	25.0 -26.0	20	248	0.2	1.2	200	2150	46													
	26.0 -27.0	20	246	0.2	1.2	180	2170	47													
	27.0 -28.5	20	233	0.2	1.0	150	2290	45													

Drill Hole Record



Property	FIN	District	Hole No.	DDH-80-3
Commenced		Location	Tests at	Hor. Comp.
Completed		Core Size	Corr. Dip	Vert. Comp.
Co-ordinates			True Brg.	Logged by
Objective			% Recov.	Date

Claim

T Brg.

Collar Dip

Elev.

Length

Hole No. DDH80-3 Sheet 4

From	METERAGE To	Description	RUNS AND SHORTS		Sample No.	Length	Analysis										
			Interval Width	Recovered			From - To	Interval Width	Recovered								
0.0	6.6		6.6	overburden			25.8 - 27.2	1.4	1.2								
6.6	7.3		0.7				27.2 - 27.7	0.5	0.4								
7.3	8.2		0.9	0.4			27.7 - 29.3	1.6	1.4								
8.2	8.7		0.5	0.3			29.3 - 30.8	1.5	1.4								
8.7	9.6		0.9	0.3			30.8 - 32.5	1.7	1.5								
9.6	11.0		1.4	0.6			32.5 - 34.0	1.5	1.5								
11.0	12.5		1.5	0.3			34.0 - 34.4	0.4	0.2								
12.5	13.4		0.9	0.6			34.4 - 36.0	1.6	1.5								
13.4	14.3		0.9	0.6			36.0 - 36.9	0.9	0.6								
14.3	15.7		1.4	0.6			36.9 - 38.1	1.2	0.9								
15.7	16.3		0.6	0.3			38.1 - 39.6	1.5	1.4								
16.3	16.6		0.3	0.3			39.6 - 39.9	0.3	0.3								
16.6	17.7		1.1	0.6			39.9 - 40.8	0.9	0.9								
17.7	18.7		1.0	0.8			40.8 - 42.4	1.6	1.4								
18.7	19.2		0.5	0.3			42.4 - 43.9	1.5	1.5								
19.2	20.3		1.1	0.7			43.9 - 45.1	1.2	1.2								
20.3	21.3		1.0	0.6			45.1 - 46.2	1.1	0.9								
21.3	22.3		1.0	0.9			46.2 - 47.4	1.2	1.2								
22.3	23.3		1.0	0.8			47.4 - 49.1	1.7	1.5								
23.3	24.5		1.2	0.8			49.1 - 50.6	1.5	1.4								
24.5	25.8		1.3	0.8			50.6 - 52.1	1.5	1.5								

Drill Hole Record



Property	FIN	District	Hole No.	DDH-80-3
Commenced		Location	Tests at	Hor. Comp.
Completed		Core Size	Corr. Dip	Vert. Comp.
Co-ordinates			True Brg.	Logged by
Objective			% Recov.	Date

Claim	T Brg.	Collar Dip	Elev.	Length
-------	--------	------------	-------	--------

METERAGE		Description	RUNS AND SHORTS	Sample No.	Length	Analysis								
From	To					Interval Width	Recovered							
52.1	52.7	0.6	0.9											
52.7	54.6	1.9	1.5											
54.6	56.1	1.5	1.3											
56.1	57.5	1.4	1.0											
57.5	57.9	0.4	0.3											
57.9	59.4	1.5	2.4											
59.4	59.9	0.5	0.2											
		Recovery:	80%	<i>Rwb</i>										

Hole No. DDH80-3 Sheet 5

Drill Hole Record



Property	FIN	District	Hole No.	DDH 80-4
Commenced		Location	Tests at	Hor. Comp.
Completed		Core Size	Corr. Dip	Vert. Comp.
Co-ordinates			True Brg.	Logged by
Objective			% Recov.	Date 29 June 1980

Claim

T Brg. 0° (true)

Collar Dip
-70° to the North

Elev.

363.5 m

Length

160.6 metres

Hole No.

Sheet

Footage From To	Description	Sample No.	Length	Analysis			
80.2 to 96.5	Siltstone, silty mudstone, and minor amounts of very fine sandstone. Siltstone is the major constituent, and it is a medium grey color. The silty mudstone is black. The sandstone is light grey. The overall colour is medium to dark grey. Interbedded, beds 0.5 to 3.0 cm thick, soft-easily scratched by a knife, weakly calcareous in places, a few laminae and thin beds of sandstone near contact with underlying unit.						
96.5 to 134.8	Siltstone, sandstone and silty mudstone, interbedded, sandstone content varies from 5 to 40%. The units' upper contact is marked by a 5 cm thick bed of sandstone and the lower contact is marked by a 15 cm thick bed of sandstone. The sandstone beds vary in thickness up to 40 cm, but usually average 10 cm. The sandstone varies from fine to very coarse grained, but is usually medium grained. The coarser grained sandstones consist of angular elongate chips of white chert in a finer grained matrix of angular mudstone and chert fragments. The sandstones usually carry up a few percent disseminated pyrite, and some of them are weakly to moderately calcareous.						
134.8 to 160.6	Siltstone interlaminated to interbedded with subordinate amounts of silty mudstone to mudstone, and 0.5 to 5.0% sandstone. The siltstone constitutes two-thirds of the rock, and is medium grey. The mudstone is dark grey to black. The over-all colour is medium to dark grey. In places the mudstone, siltstone and sandstone is interlaminated, suggesting deposition by turbidites.						
	END OF HOLE						

Drill Hole Record



Property	FIN	District	Hole No.	80-4
Commenced		Location	Tests at	Hor. Comp.
Completed		Core Size	Corr. Dip	Vert. Comp.
Co-ordinates			True Brg.	Logged by
Objective			% Recov.	Date

Claim

T Brg.

Collar Dip

Elev.

Length

Hole No. 80-4 Sheet 3

Footage		Description	ROCK GEOCHEM VALUES							Sample No.	Length	Analysis							
From	To		Pb ppm	Zn ppm	Ag ppm	Cd ppm	Mn ppm	Ba ppm	Cu ppm			Sample No.	Pb ppm	Zn ppm					
		Sample No.																	
		9.4-13.0	20	184	0.2	0.6	230	2110	42	44 - 45	18	222							
		13.0-16.0	20	213	0.2	0.6	130	2240	43	45 - 46	18	388							
		16.0-18.4	20	235	0.3	1.1	230	2000	38	46 - 47	18	395							
		18.4-21.0	20	357	0.2	2.6	135	2390	40	47 - 48	44	351							
		21.0-24.0	20	310	0.2	2.4	130	2320	42	48 - 49	17	388							
		24.0-28.0	20	348	0.2	2.5	145	2280	43	49 - 50	18	371							
		28 - 29	26	585						50 - 51	20	460							
		29 - 30	27	133						51 - 52	17	369							
		30 - 31	23	343						52 - 53	15	329							
		31 - 32	18	734						53 - 54	16	460							
		32 - 33	20	364						54 - 55	18	410							
		33 - 34	20	425						55 - 56	15	410							
		34 - 35	19	367						56 - 57	18	387							
		35 - 36	18	398						57 - 58	16	400							
		36 - 37	17	289						58 - 59	25	343							
		37 - 38.7	18	238						59 - 60	16	570							
		38.7- 40	16	194						60 - 61	17	361							
		40 - 41	16	238						61 - 62	16	377							
		41 - 42	16	212						62 - 63	16	362							
		42 - 43	16	199						63 - 64	18	348							
		43 - 44	15	178						64 - 65	16	425							

Drill Hole Record



Property	District	Hole No.
Commenced	Location	Tests at
Completed	Core Size	Hor. Comp.
Co-ordinates	True Brg.	Vert. Comp.
Objective	% Recov.	Logged by
		Date

Claim

T Brg.

Collar Dip

Elev.

Length

Hole No. 80-4 Sheet 4

Footage		Description	ROCK GEOCHEM VALUES										Sample No.	Length	Analysis				
From	To		Pb	Zn	Pb	Zn	Ag	Cd	Mn	Ba	Cu								
		Sample No.	ppm	ppm	Sample No.	ppm	ppm	ppm	ppm	ppm	ppm	ppm							
		65 - 66	14	670	86 - 87	22	200												
		66 - 67	17	670	87 - 88	20	235												
		67 - 68	25	890	88 - 89	20	200												
		68 - 69	30	710	89 - 90	19	260												
		69 - 70	26	550	90 - 93	25	274	0.2	1.2	120	2310	47							
		70 - 71	24	840	93 - 96.5	20	266	0.2	1.3	170	2180	49							
		71 - 72	16	685	96.5-100	30	264	0.3	1.4	160	1940	44							
		72 - 73	12	278	100 -103	30	250	0.2	1.3	170	1860	44							
		73 - 74	13	250	103 -106	20	275	0.2	1.4	135	1980	47							
		74 - 75	14	305	106 -109	20	240	0.2	1.2	210	1870	46							
		75 - 76	17	346	109 -112	30	232	0.3	1.0	150	1860	47							
		76 - 77	18	230	112 -115	20	210	0.2	1.0	120	1910	46							
		77 - 78	20	435	115 -118	20	178	0.2	0.7	160	1670	38							
		78 - 79	20	166	118 -121	20	138	0.2	0.3	230	1550	36							
		79 - 80.2	25	225	121 -124	20	139	0.2	0.4	175	1670	40							
		80.2- 81	34	150	124 -127	50	144	0.2	0.4	220	1310	32							
		81 - 82	42	260	127 -130	20	148	0.2	0.4	205	1600	40							
		82 - 83	23	300	130 -134.8	20	176	0.2	0.6	185	1660	38							
		83 - 84	22	355	134.8 -138	20	175	0.2	0.4	160	1790	42							
		84 - 85	17	275	138 -141	20	181	0.2	0.5	165	1790	45							
		85 - 86	22	210	141 -144	20	175	0.2	0.6	190	1810	44							

Drill Hole Record



Property	FIN	District	Hole No.	DDH-80-4
Commenced	Location		Tests at	Hor. Comp.
Completed	Core Size		Corr. Dip	Vert. Comp.
Co-ordinates			True Brg.	Logged by
Objective			% Recov.	Date

Claim

T Brg.

Collar Dip

Elev.

Length

METERAGE		Description	RUNS AND SHORTS				Sample No.	Length	Analysis						
From	To		Interval Width	Recovered	From - To	Interval Width			Recovered						
0	6.4	6.4	overburden		29.3 - 30.9	1.6	1.5								
6.4	7.9	1.5	0.7		30.9 - 32.3	1.4	1.5								
7.9	9.4	1.5	0.6		32.3 - 33.8	1.5	1.5								
9.4	10.4	1.0	0.2		33.8 - 36.9	3.1	2.1								
10.4	11.6	1.2	0.3		36.9 - 37.8	0.9	0.9								
11.6	11.9	0.3	0.3		37.8 - 39.3	1.5	1.5								
11.9	13.9	2.0	1.2		39.3 - 40.8	1.5	1.5								
13.9	16.2	2.3	2.2		40.8 - 42.7	1.9	1.7								
16.2	17.1	0.9	0.8		42.7 - 44.3	1.6	1.5								
17.1	18.6	1.5	0.8		44.3 - 45.9	1.6	1.5								
18.6	18.7	0.1	0.1		45.9 - 47.4	1.5	1.4								
18.7	19.2	0.5	0.5		47.4 - 48.9	1.5	1.5								
19.2	19.8	0.6	0.3		48.9 - 50.4	1.5	1.5								
19.8	20.9	1.1	0.7		50.4 - 52.0	1.6	1.5								
20.9	21.6	0.7	0.6		52.0 - 55.5	3.5	2.2								
21.6	23.2	1.6	1.5		55.5 - 57.3	1.8	1.4								
23.2	24.4	1.2	1.2		57.3 - 59.0	1.7	1.3								
24.4	25.6	1.2	0.8		59.0 - 60.5	1.5	1.5								
25.6	26.8	1.2	1.4		60.5 - 62.0	1.5	1.5								
26.8	27.7	0.9	0.7		62.0 - 63.7	1.7	1.5								
27.7	29.3	1.6	1.3		63.7 - 65.2	1.5	1.5								

Drill Hole Record



Property	FIN	District	Hole No.	DDH-80-4
Commenced		Location	Tests at	Hor. Comp.
Completed		Core Size	Corr. Dip	Vert. Comp.
Co-ordinates			True Brg.	Logged by
Objective			% Recov.	Date

Claim

T Brg.

Collar Dip

Elev.

Length

METERAGE		Description					Sample No.	Length	Analysis					
From	To	RUNS AND SHORTS												
		Interval Width	Recovered	From -	To	Interval Width	Recovered							
65.2	66.9	1.7	1.5	91.7	93.3	1.6	1.4							
66.9	68.6	1.7	1.5	93.3	95.1	1.8	1.4							
68.6	70.4	1.8	1.5	95.1	96.6	1.5	1.5							
70.4	72.1	1.7	1.5	96.6	98.1	1.5	1.5							
72.1	73.6	1.5	1.4	98.1	99.7	1.6	1.5							
73.6	74.2	0.6	0.6	99.7	101.2	1.5	1.5							
74.2	75.0	0.8	0.6	101.2	102.7	1.5	1.5							
75.0	75.7	0.7	0.6	102.7	104.2	1.5	1.4							
75.7	76.8	1.1	0.6	104.2	105.8	1.6	1.5							
76.8	78.3	1.5	1.0	105.8	107.3	1.5	1.5							
78.3	78.9	0.6	0.5	107.3	108.8	1.5	1.4							
78.9	80.0	1.1	0.6	108.8	110.3	1.5	1.5							
80.0	80.2	0.2	0.2	110.3	111.9	1.6	1.5							
80.2	81.4	1.2	1.1	111.9	113.4	1.5	1.5							
81.4	82.8	1.4	1.2	113.4	114.9	1.5	0.6							
82.8	84.4	1.6	1.6	114.9	117.3	2.4	2.1							
84.4	85.8	1.4	1.4	117.3	120.4	3.1	2.6							
85.8	87.3	1.5	1.5	120.4	121.6	1.2	1.1							
87.3	88.5	1.2	1.2	121.6	122.8	1.2	1.2							
88.5	90.1	1.6	1.4	122.8	124.4	1.6	0.9							
90.1	91.7	1.6	1.5	124.4	126.5	2.1	1.8							

Drill Hole Record



Property	FIN	District	Hole No.	DDH-80-4
Commenced		Location	Tests at	Hor. Comp.
Completed		Core Size	Corr. Dip	Vert. Comp.
Co-ordinates			True Brg.	Logged by
Objective			% Recov.	Date

Claim

T Brg.

Collar Dip

Elev.

Length

METERAGE		Description	RUNS AND SHORTS		Sample No.	Length	Analysis							
From	To		Interval Width	Recovered										
126.5	129.1	2.6	2.3											
129.1	132.0	2.9	2.6											
132.0	132.7	0.7	0.5											
132.7	135.0	2.3	2.1											
135.0	136.6	1.6	1.0											
136.6	138.4	1.8	1.7											
138.4	140.4	2.0	2.0											
140.4	141.4	1.0	0.8											
141.4	143.3	1.9	1.8											
143.3	146.3	3.0	2.9											
146.3	148.4	2.1	2.0											
148.4	150.0	1.6	1.5											
150.0	154.8	4.8	1.8											
154.8	158.5	3.7	3.8											
158.5	160.6	2.1	2.0											
		Recovery:	85%	$\frac{130.9}{154.2} \times 100 = 85\%$										

RWD

Drill Hole Record



Property	FIN	District	Watson Lake M.D.	Hole No.	DDH-80-5
Commenced	June 29, 1980	Location	180 km N of Watson Lk	Tests at	None
Completed	July 7, 1980	Core Size	NQ	Corr. Dip	Vertical
Co-ordinates	99,633N & 99,949E		True Brg.	N/A	
Objective	To test down dip extension of mineralization intersected			% Recov.	25%
	by DDH-80-1 and 2.			Date	July 20/80

Claim

T Brg.

N/A

Collar Dip vertical

Elev.

886 m

Length

32.0 m

Hole No. DDH-80 Sheet 1

METERAGE		Description	Sample No.	Length	Analysis					
From	To									
0.0	19.8	Overburden - boulders of sandstone, granite and mudstone.								
19.8	30.1	Silty mudstone to siltstone, thinly interbedded with 10% mudstone and 2% sandstone. The silty mudstone to siltstone is medium to dark grey, the mudstone is black, the sandstone is light to dark grey. A few laminae of pyrite. Some of the mudstone and sandstone are weakly calcareous.								
30.1	32.0	Silty mudstone to siltstone interbedded with sandstone to pebbly sandstone. Sandstone constitutes approximately 40% of the unit, and it occurs in beds up to 15 cm thick. The siltstone is dark grey, and the sandstone is light to dark grey. The sandstone ranges in grain size from medium grained to pebbly - i.e. clasts averaging 0.4 cm in diameter but up to 0.8 cm in diameter. Most of the sandstone grains consist of light to dark grey chert, and some mudstone. The matrix of the sandstone is moderately calcareous. Some of the grains of the pebbly sandstone are partially replaced by pyrite. In addition, a 1.5 cm thick bed of pyrite occurs within sandstone at 31.4 m. A 7 cm bed of sandstone forms the upper contact of the unit.								
		The hole ended at 32.0 m due to stuck rods. Most of the above described stratigraphy was very broken due to faulting.								

Drill Hole Record



Property	FIN	District	Hole No.	DDH-80-5
Commenced	Location		Tests at	Hor. Comp.
Completed	Core Size		Corr. Dip	Vert. Comp.
Co-ordinates	True Brg.		Logged by	
Objective	% Recov.		Date	

Claim

T Brg.

Collar Dip

Elev.

Length

Hole No. 80-5 Sheet 7

METERAGE		Description	Sample No.	Length	Analysis				
From	To								
		RUNS AND SHORTS							
		<u>Interval Width</u>							
		<u>Recovered</u>							
0.0	19.8	19.8							
		Overburden							
19.8	20.7	0.9							
		0.20 m							
20.7	21.3	0.6							
		0.05 m							
21.3	21.8	0.5							
		0.05 m							
21.8	22.3	1.5							
		0.25							
22.3	23.6	1.3							
		0.65							
23.6	24.7	1.1							
		0.25							
24.7	25.3	0.6							
		0.05							
25.3	26.7	1.4							
		0.15							
26.7	27.0	0.30							
		0.05							
27.0	27.9	0.90							
		0.30							
27.9	28.3	0.40							
		0.20							
28.3	28.7	0.40							
		0.10							
28.7	30.2	1.5							
		0.10							
30.2	30.8	0.6							
		0.10							
30.8	31.4	0.6							
		0.25							
31.4	32.0	0.6							
		0.10							
		$\frac{2.85 \text{ m}}{11.60} \times 100 = 25\% \text{ recovery}$							
		<i>Recovery</i>							

Drill Hole Record



Property	FIN	District	Watson Lake	Hole No.	DDH-80-6
Commenced	July 8, 1980	Location	180 km north of Watson	Tests at	None
Completed	July 18, 1980	Core Size	NQ	Corr. Dip	Vertical
Co-ordinates	99,775N; 100,370E			True Brg.	N/A
Objective	To test down dip and strike extension of Pb-Zn mineralization intersected by DDH-80-1 and 2.			% Recov.	62%
				Date	July 18/80

METERAGE		Description	Sample No.	Length	Analysis				
From	To								
0.0	- 10.7	Overburden							
10.7	- 95.5	Siltstone, thinly interbedded to interlaminated with 35% silty mudstone to mudstone and 1-2% sandstone. The siltstone is a medium to dark grey colour, the silty mudstone to mudstone is greyish black to black, and the sandstone is light grey. The overall colour of the unit is medium grey. The mudstone and sandstone occur in laminae or very thin beds up to 1-2 cm thick and usually occur every 2-5 cm. The sandstone is fine to medium-grained, and frequently it fines upwards into siltstone and then into mudstone, suggesting turbidite deposition. The sandstone matrix is weakly to moderately calcareous. Pyrite occurs disseminated and laminated, and occasionally in nodules. The section 10.7 m to 50.8 m is estimated to contain 0.25% pyrite, and the section 50.8 to 95.5 is estimated to contain 1.0% pyrite. A few 1-2 cm thick reddish-brown-grey beds occur within the 50.8 to 95.5 section, which are thought to possibly be associated with minor Pb-Zn values.							
95.5	- 123.2	Siltstone, interbedded to interlaminated with 25% sandstone and 5% silty mudstone to mudstone. The siltstone is light to dark grey, the silty mudstone to mudstone is greyish-black to black, and the sandstone is light grey. The laminated to very thin bedding is clearly defined by colour and grain size variations. The siltstones and mudstones can be easily scratched by a knife. The sandstones average 25% of the unit, however they range in concentration from 5% to 75% within 1.5 metre intervals. The beds of sandstone vary in thickness from less than 1 cm up to 1.2 metres thick. A typical sandstone bed is 5 to 30 cm thick and occurs approximately							

Claim

T Brg.

N/A

Collar Dip

Vertical

Elev.

902.8 m

Length

143.6 m

Sheet

Hole No.

Drill Hole Record



Property	FIN	District	Hole No.	80-6
Commenced		Location	Tests at	Hor. Comp.
Completed		Core Size	Corr. Dip	Vert. Comp.
Co-ordinates			True Brg.	Logged by
Objective			% Recov.	Date

Claim

T Brg.

Collar Dip

Elev.

Length

Hole No. 80-6 Sheet 3

Footage		Description	ROCK GEOCHEM VALUES								Sample No.	Length	Analysis						
From	To		Pb	Zn	Ag	Cd	Mn	Ba	Pb	Zn			Ag	Cd	Mn	Ba			
		Sample No.	ppm	ppm	ppm	ppm	ppm	ppm	ppm	ppm	ppm	ppm	ppm	ppm					
		10.7 - 12	19	420	0.5	3.8	145	2550	52 - 54	18	293	0.2	1.9	139	2150				
		12 - 14	38	440	0.4	3.7	112	2330	54 - 56	15	272	0.2	1.8	120	2110				
		14 - 16	19	276	0.3	2.1	142	2390	56 - 58	26	306	0.2	1.7	105	2020				
		16 - 18	76	348	0.4	2.3	130	2100	58 - 60	17	268	0.3	1.7	122	2100				
		18 - 20	26	318	0.3	2.0	190	2450	60 - 62	20	342	0.2	2.4	135	2070				
		20 - 22	19	393	0.4	2.6	190	2490	62 - 64	21	353	0.5	2.6	152	1890				
		22 - 24	20	375	0.2	3.1	191	2470	64 - 66	19	375	0.5	3.2	160	1980				
		24 - 26	18	258	0.2	1.8	203	2580	66 - 68	25	445	0.4	3.4	150	1980				
		26 - 28	19	299	0.3	1.9	190	2350	68 - 70	22	374	0.2	2.8	169	1940				
		28 - 30	18	293	0.2	1.9	210	2360	70 - 72	28	255	0.2	1.9	178	1880				
		30 - 32	24	306	0.3	2.2	171	2380	72 - 74	19	485	0.3	4.8	205	2010				
		32 - 34	20	273	0.4	1.4	130	2440	74 - 76	18	327	0.2	2.8	162	1980				
		34 - 36	22	318	0.3	1.6	124	2470	76 - 78	21	367	0.3	2.9	161	1990				
		36 - 38	18	250	0.2	1.2	210	2300	78 - 80	19	295	0.2	2.3	164	2420				
		38 - 40	21	298	0.3	1.7	134	2460	80 - 82	19	232	0.2	1.4	213	1910				
		40 - 42	24	329	0.3	1.9	128	2460	82 - 84	19	233	0.2	1.5	256	1970				
		42 - 44	20	202	0.3	1.0	112	2410	84 - 86	21	220	0.3	1.6	220	1990				
		44 - 46	19	230	0.2	1.0	225	2200	86 - 88	28	269	0.3	1.8	180	2180				
		46 - 48	24	254	0.4	0.8	125	2470	88 - 90	31	200	0.2	0.7	152	1950				
		48 - 50	23	284	0.4	1.2	137	2390	90 - 92	20	166	0.2	0.5	206	1980				
		50 - 52	17	242	0.4	1.2	170	2210	92 - 94	21	180	0.2	0.6	180	2110				

Drill Hole Record



Property FIN District Hole No. DDH-80-6

Commenced Location Tests at Hor. Comp.

Completed Core Size Corr. Dip Vert. Comp.

Co-ordinates True Brg. Logged by

Objective % Recov. Date

From	To	Description	RUNS AND SHORTS				Sample No.	Length	Analysis					
			Interval Width	Recovered	From - To	Interval Width			Recovered					
10.7 - 11.0	.3	.15	32.0 - 32.9	.9	.15									
11.0 - 11.6	.6	.4	32.9 - 33.5	.6	.55									
11.6 - 12.6	1.0	.3	33.5 - 34.4	.9	.55									
12.6 - 13.4	.8	.4	34.4 - 36.0	1.6	.6									
13.4 - 14.9	1.5	.3	36.0 - 36.9	.9	.3									
14.9 - 16.2	1.3	.5	36.9 - 37.5	.6	.15									
16.2 - 17.1	.9	.15	37.5 - 37.8	.3	.1									
17.1 - 18.0	.9	.55	37.8 - 38.4	.9	.25									
18.0 - 18.9	.9	.85	38.4 - 39.6	1.2	1.05									
18.9 - 19.8	.9	.7	39.6 - 40.2	.6	.4									
19.8 - 21.0	1.2	1.15	40.2 - 41.1	.9	.5									
21.0 - 23.2	2.2	.6	41.1 - 43.0	1.9	.7									
23.2 - 23.5	.2	.2	43.0 - 44.2	1.2	0									
23.5 - 24.4	.9	.45	44.2 - 45.7	3.5	.6									
24.4 - 25.9	1.5	.35	45.7 - 46.6	.9	.6									
25.9 - 26.8	.9	.25	46.6 - 47.5	.9	.5									
26.8 - 27.7	.9	.45	47.5 - 48.2	.7	.65									
27.7 - 29.3	1.6	.35	48.2 - 48.9	.7	.5									
29.3 - 29.9	.3	.2	48.9 - 50.0	1.1	.55									
29.9 - 31.1	1.2	.3	50.0 - 50.4	.4	.35									
31.1 - 32.0	.9	.35	50.4 - 50.9	.5	.4									

Claim

T Brg.

Collar Dip

Elev.

Length

Hole No. 80-6 Sheet 5

Drill Hole Record



Property	FIN	District	Hole No.	DDH-80-6
Commenced	Location		Tests at	Hor. Comp.
Completed	Core Size		Corr. Dip	Vert. Comp.
Co-ordinates			True Brg.	Logged by
Objective			% Recov.	Date

Claim

T Brg.

Collar Dip

Elev.

Length

Hole No. 80-6 / Sheet /

From	To	Description	Sample No.	Length	Analysis					
METERAGE		RUNS AND SHORTS CONTINUED								
Interval Width	Recovered	From - To	Interval Width	Recovered						
50.9 - 51.8	.9	.3	68.7 - 69.0	.3	.25					
51.8 - 53.2	1.4	.3	69.0 - 70.0	1.0	.75					
53.2 - 53.6	1.4	.15	70.0 - 70.4	.4	.4					
53.6 - 53.9	.3	.3	70.4 - 71.6	1.2	.95					
53.9 - 55.2	1.3	.3	71.6 - 72.8	1.2	1.05					
55.2 - 55.8	.6	.2	72.8 - 73.8	1.0	.75					
55.8 - 56.4	.6	.26	73.8 - 74.5	.7	.7					
56.4 - 57.3	.9	.5	74.5 - 75.7	1.2	.75					
57.3 - 58.1	.8	.6	75.7 - 76.7	1.0	1.0					
58.1 - 58.8	.7	.45	76.7 - 77.7	1.0	1.0					
58.8 - 59.7	.9	.65	77.7 - 78.6	.9	.75					
59.7 - 60.6	.9	.5	78.6 - 79.6	1.0	.55					
60.6 - 61.3	.7	.15	79.6 - 80.2	.6	.6					
61.3 - 62.0	.7	.4	80.2 - 81.4	1.2	.95					
62.0 - 62.5	.5	.1	81.4 - 82.0	.6	.5					
62.5 - 63.5	1.0	.6	82.0 - 83.8	1.8	.55					
63.5 - 64.9	1.4	1.1	83.8 - 85.4	1.6	1.45					
64.9 - 65.7	.8	.55	85.4 - 86.9	1.5	.8					
65.7 - 66.6	.9	.75	86.9 - 87.8	.9	.65					
66.6 - 67.5	.9	.7	87.8 - 88.7	.9	.55					
67.5 - 68.7	1.2	.35	88.7 - 89.6	.9	.9					

Drill Hole Record



Property	FIN	District	Hole No.	DDH-80-6
Commenced	Location		Tests at	Hor. Comp.
Completed	Core Size		Corr. Dip	Vert. Comp.
Co-ordinates			True Brg.	Logged by
Objective			% Recov.	Date

Claim
T Brg.
Collar Dip
Elev.
Length
Hole No. 80-6-7 Sheet 7

METERAGE		Description	RUNS AND SHORTS CONTINUED				Sample No.	Length	Analysis				
From	To		Interval Width	Recovered	From - To	Interval Width			Recovered				
89.6	91.2	1.6	1.1	116.4 - 118.0	1.6	1.2							
91.2	91.9	.7	.6	118.0 - 119.3	1.3	1.15							
91.9	93.3	1.4	1.15	119.3 - 120.7	1.4	1.15							
93.3	94.8	1.5	1.45	120.7 - 122.2	1.5	1.35							
94.8	95.7	.9	.6	122.2 - 123.7	1.5	1.3							
95.7	96.5	.8	.7	123.7 - 125.3	1.6	1.35							
96.5	97.9	1.2	1.15	125.3 - 126.9	1.6	1.4							
97.9	99.1	1.2	1.05	126.9 - 128.0	1.1	.65							
99.1	100.6	1.5	1.1	128.0 - 130.8	2.8	2.3							
100.6	102.1	1.5	1.4	130.8 - 132.9	2.1	2.0							
102.1	103.7	1.6	.35	132.9 - 134.4	1.5	1.25							
103.7	105.3	1.6	1.35	134.4 - 136.1	1.7	1.5							
105.3	107.0	1.7	1.3	136.1 - 137.6	1.5	1.2							
107.0	108.2	1.2	.9	137.6 - 139.1	1.5	1.25							
108.2	109.8	1.6	1.5	139.1 - 140.2	1.1	1.0							
109.8	111.1	1.3	1.3	140.2 - 142.0	1.8	1.7							
111.1	111.6	.5	.4	142.0 - 143.6	1.6	1.50							
111.6	112.8	1.2	.9										
112.8	114.3	1.5	1.25										
114.3	115.2	.9	.75										
115.2	116.4	1.2	1.0										

RWL

COMINCO LTD.

EXPLORATION

WESTERN DISTRICT
27 AUGUST 1980

C E R T I F I C A T I O N

I, RONALD W. LANE, of 7673 Sutton Place, in the City of North Delta,
in the Province of British Columbia, do hereby certify that:

1. I graduated from the University of Alberta in 1971 with
a B.Sc., specializing in geology.
2. That I have been practising my profession on a continuous
basis for the last nine years.



RONALD W. LANE

Report by: *Ronald W. Lane*
R.W. Lane, Geologist

Endorsed by: *A.B. Mawer for ABM*
A.B. Mawer, Senior Geologist

Approved for
Release by: *G. Harden*
G. Harden, Manager
Exploration
Western District

RWL/gmk

C A N A D A
YUKON TERRITORY
TO WIT:

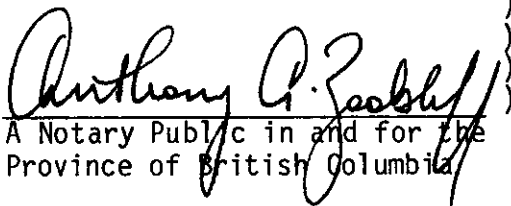
STATUTORY DECLARATION


I, ROBIN LAWSON WOODS, of the District of North Vancouver, in the Province of British Columbia, DO SOLEMNLY DECLARE THAT:

1. I am the Supervisor, Exploration and Foreign Accounting for Cominco Ltd., 2300 - 200 Granville Street, Vancouver, British Columbia, and, as such have knowledge of the facts deposed to herein.
2. Attached to this Statutory Declaration, as Schedule A, is a statement of expenditures indicating the expenditures charged by Cominco Ltd. on the Fin Property for the period January 1, 1980 to August 31, 1980.
3. The statement of expenditures referred to in paragraph 2 is true and accurate to the best of my knowledge, information and belief.

AND I make this solemn declaration conscientiously believing it to be true and knowing that it is of the same force and effect as if made under oath and by virtue of the Canada Evidence Act.

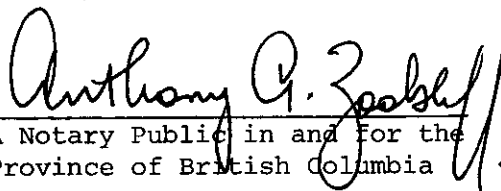
DECLARED before me at the City)
of Vancouver in the Province)
of British Columbia, this 9th)
day of September 1980)


A Notary Public in and for the
Province of British Columbia



Robin Lawson Woods

This is Schedule A referred to
in the Statutory Declaration
of ROBIN LAWSON WOODS
Declared before me this 9th day
of September, 1980


A Notary Public in and For the
Province of British Columbia

STATEMENT OF EXPENDITURES

FIN PROPERTY


WATSON LAKE M.D., YUKON

JANUARY 1, 1980 TO AUGUST 31, 1980

Communications	\$ 1,304
Geology	21,518
Transportation including mobilization	29,823
Camp costs	1,613
Diamond drilling	96,979
Linecutting	625
Tenure	19,165
Administrative services	17,103
	<hr/>
	\$188,130
	<hr/> <hr/>

Cominco Ltd.
Vancouver Office
September 9, 1980

Copies: Manager, Exploration Administration
Mining Recorder (2)
File (2)


R.L. Woods
Supervisor, Exploration
& Foreign Accounting