



REPORT ON THE 1979 FIELD PROGRAM

ELLE 1-139

WATSON LAKE MINING DISTRICT

CLAIM SHEET 105B/9

Lat. 60°37'N

Long. 130°21'W

Dominique Paré

Geologist

This report has been examined by the Geological Evaluation Unit and is recommended to the Commissioner to be considered as representation work in the amount of

\$ 1600

Resident Geologist or
Resident Mining Engineer

Considered as representation work under
Section 53 (4) Yukon Quartz Mining Act.

B. R. BAXTER
Supervising Mining Recorder

Commissioner of Yukon Territory

William Olson

090 624

CONTENTS

	<u>Page</u>
SUMMARY.....	i
I - INTRODUCTION.....	1
1.1 Location.....	1
1.2 Previous work.....	1
II - GEOLOGY.....	2
2.1 Geological overview of the ELLE claims.....	2
III - 1979 FIELD PROGRAM.....	4
3.1 Introduction.....	4
3.2 Logistics.....	5
3.3 ELLE claim work.....	6
3.3.1 Objectives.....	6
3.3.2 Radiometrics.....	6
3.3.3 Geochemistry.....	7
3.3.4 Geological mapping/ trenching.....	8
3.4 Results.....	9
3.4.1 Radiometrics.....	9
3.4.2 Geochemistry.....	12
a) Soil geochemistry.....	12
b) Rock geochemistry.....	14
3.4.3 Geological mapping.....	15
3.4.4 Discussion.....	15
IV - CONCLUSIONS.....	18
V - RECOMMENDATIONS.....	19
REFERENCES.....	21
APPENDIX	
Certificates of analyses	

ILLUSTRATIONS

<u>Figure</u>	<u>Description</u>	<u>Opposite page</u>
6-1a	Location map a)	i
6-1b	Location map b)	i
6-1c	Claim map	In pocket
6-2a	ELLE claims Geology	"
6-2b	ELLE claims - major grid Radiometrics	"
6-2c	ELLE claims - major grid Sample location	"
6-2d	ELLE claims - major grid Geochemistry - rocks	"
6-2e	ELLE claims - major grid Geochemistry - soil, silt, and water	"
6-3a	ELLE claims - minigrid #1 Radiometrics	"
6-3b	ELLE claims - minigrid #1 Sample location	"
6-3c	ELLE claims - minigrid #1 Geochemistry - rocks	"
6-3d	ELLE claims - minigrid #1 Geochemistry -soils	"
6-4a	ELLE claims - minigrid #2 Radiometrics	"
6-4b	ELLE claims - minigrid #2 Sample location	"
6-4c	ELLE claims - minigrid #2 Geochemistry - rocks	"
6-4d	ELLE claims - minigrid #2 Geochemistry - soils	"

TABLES

		<u>Page</u>
TABLE I	ELLE claims Radiometric anomalies, 1979	After p. 8
TABLE II	ELLE claims Soil geochemical anomalies, 1979	After p. 8
TABLE III	ELLE claims Rock geochemical anomalies, 1979	After p. 8

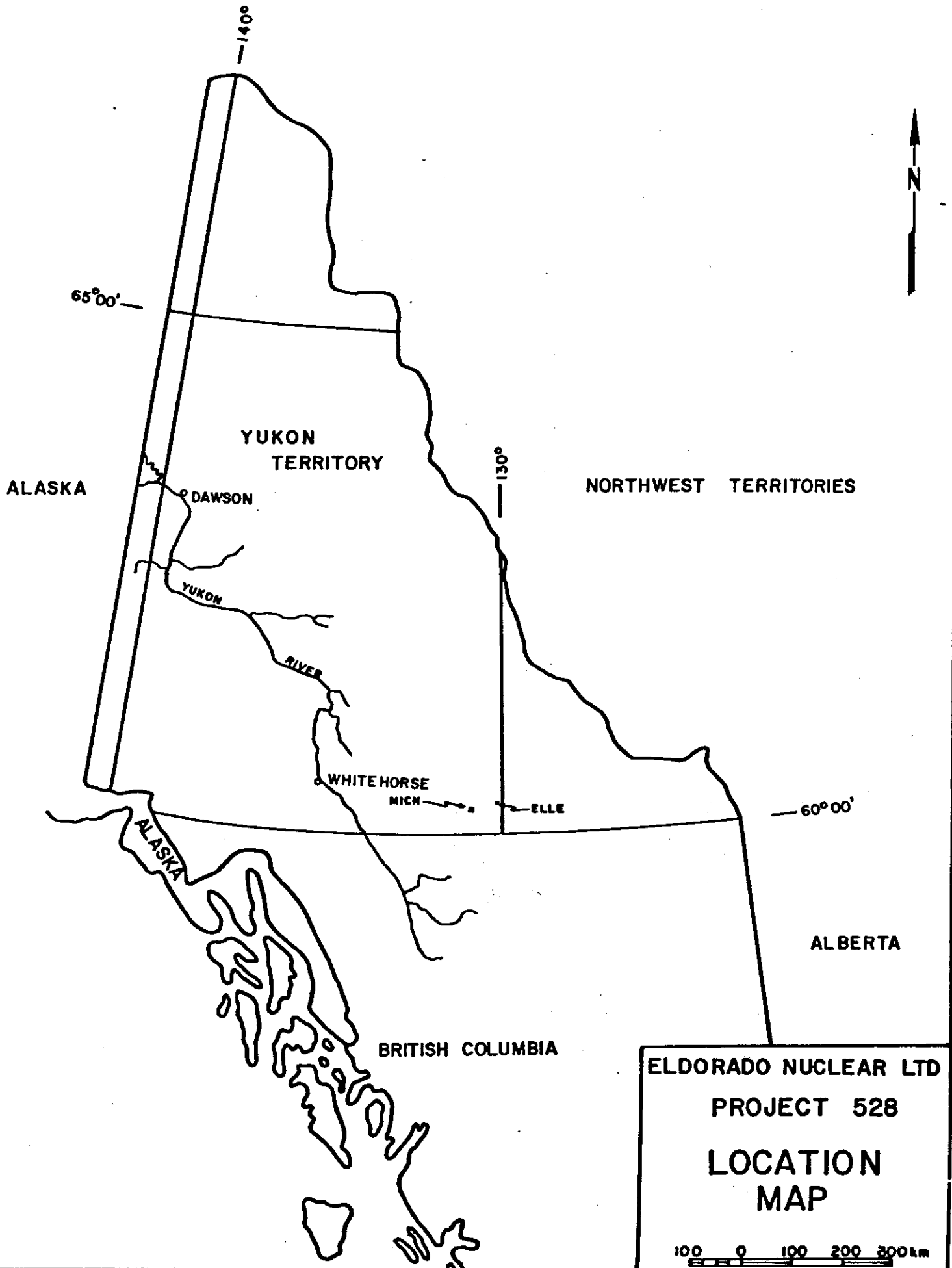
SUMMARY

A program consisting of detailed grid work was carried out on the ELLE property during the summer of 1979.

A large grid, over which was conducted a radiometric survey, was established over a northeast trending ridge in the southwest corner of the property. Two mini-grids, over which radiometric, soil and rock geochemical surveys were conducted, were established over anomalies defined by the larger grid mentioned above.

Trenches were dug in order to record the radiometric response and to obtain samples from the underlying bedrock.

The grid work enhanced considerably the importance of the anomalies on the ELLE property and it is recommended that: the structural geology of the property be examined in greater detail, further grid work be conducted, rock samples from anomalous areas be analysed for rare earths, and further trenching and blasting be carried out.



I - INTRODUCTION

1.1 Location

The ELLE claim block lies 10 miles south of the Laird River, Yukon Territories in the centre of the Allan Creek map-area (map sheet 105B/9) and is centred at latitude $60^{\circ}37'N$, longitude $130^{\circ}21'W$.

1.2 Previous work

Preliminary mapping of the Wolf Lake map-area was carried out by the Geological Survey of Canada, under the direction of W.H. Poole, from 1951 to 1955 (Poole, 1955). Further work was carried out by W.H. Poole, J.A. Roddick and L.H. Green (1960) in 1959.

In 1977, during a program managed for Eldorado Nuclear Limited by Archer-Cathro and Associates Limited, six airborne anomalies were defined on what is now the ELLE property. A Bell 47G3B2 helicopter, carrying a 113 cubic inch crystal connected to a GAD-4 spectrometer and recorder, was utilized for the survey. Ground crews carrying Scintrex BGS 1SL scintillometers provided ground truth.

The G.S.C., as part of its Uranium Reconnaissance Program, carried out a geochemical survey covering the Wolf Lake map-area in 1978. Also in 1978, Eldorado Nuclear Limited, in a program consisting of general reconnaissance work, investigated nine targets in the map-area. Silt and water samples anomalous in uranium content and a heavy mineral sample anomalous in gold content ($> 10,000$ ppb Au) were collected on Target 5, part of which is now the ELLE claims. In March 1979, a total of 104 claims were staked and in August of the same year an additional 10 claims were staked.

II - GEOLOGY

2.1 Geological overview of the ELLE claims

The ELLE claims lie in that physiographic division of the Cordillera known as the Yukon Plateau. Quaternary glacial drift covers 90 percent of the claim area. Fluvio-glacial and alluvial deposits cover the floors of the larger stream valleys and a thick mantle of ground moraine reaches high on to the upland surfaces. Swamps, such as the one in the centre of the property, are common.

The claim group is largely underlain by a medium to very coarse-grained biotite-quartz monzonite porphyry. This intrusive forms part of the extensive Jurassic-Cretaceous intrusions of the Cassiar Batholith and in particular the Logjam Stock. The units are part of a 5 km wide belt trending northwest-southeast. The northeast border of the belt intrudes Cambrian and Precambrian sediments and meta-sediments. The southwest edge is bounded by an extensive fault zone. To the southwest of the fault zone is a Cretaceous-Tertiary intrusive complex (the Seagull and Hake batholiths) which are partially covered by Devonian and Mississippian sediments and cut by the Ram Stock intrusive.

Most of the outcrops are extensively weathered and are well rounded. The rock is friable due to extensive shearing of the mineral grains which tend to be sub-parallel to one of the jointing surfaces. Although the strike may vary along the joints, the preferred direction of the shearing is always parallel to sub-horizontal to the joints with the shallowest dip. Some shear zones exhibit mylonitization within which cataclasites are often present.

The biotite-quartz monzonite is porphyritic and is composed of phenocrysts 2 to 5cm in a medium to coarse-grained matrix. There are traces of muscovite and the rock varies in colour from white to grey.

The dominant structure trend is northwest to southeast, and is defined by major faults and folding. The area is bounded to the northeast by the Rocky Mountain Trench and Laird River which parallel the general structure trend of the region.

Known mineralization in the area includes argentiferous galena veins cutting Lower Cambrian dolomite along the eastern contact of the Cassiar Batholith. Quartz veins containing wolframite, cassiterite and fluorite cross-cut Lower Cambrian phyllite near Boulder Creek northeast of Rancheria. Some skarns found adjacent to Jurassic diorite contain sphalerite and pyrrhotite; others contain sphalerite and galena assemblages. West of Logjam Creek, galena-sphalerite-quartz veins cut hornfels adjacent to Jurassic diorite. Fluorite and boron minerals occur along the borders of the Hake and Seagull batholiths and a quartz vein, bearing tourmaline, fluorite, and cassiterite, cuts a hornfels unit near the backwaters of Seagull Creek. West of Wolf Lake, fluorite, pyrite, and pyrrhotite occur in granitic dykes cutting Precambrian metasediments.

Most of the intrusives in the area (Logjam and parts of the Seagull and Hake batholiths) have been staked for tin and tungsten.

III - 1979 FIELD PROGRAM

3.1 Introduction

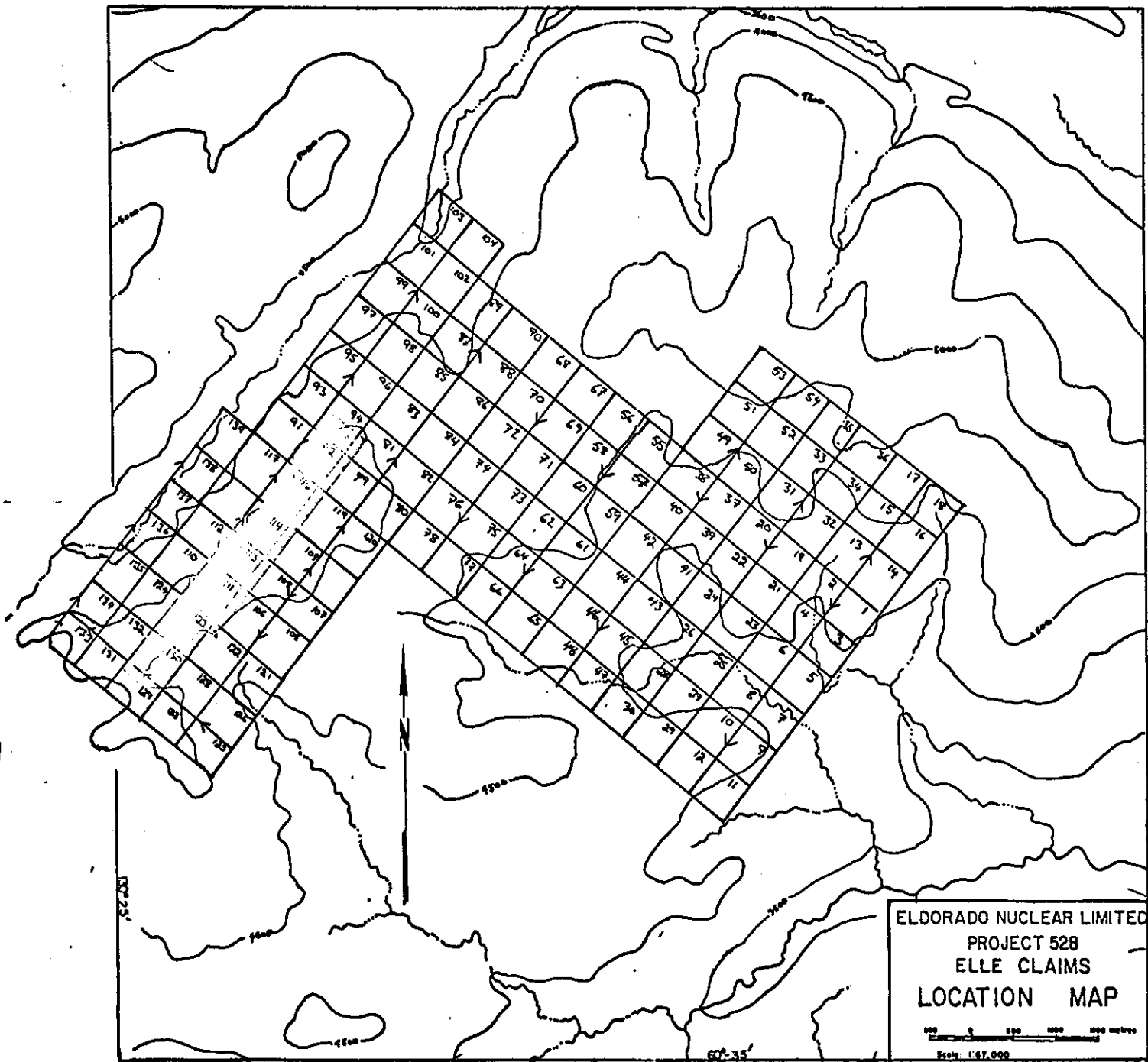
Work on the ELLE claims in 1979 consisted of a radiometric survey over a grid measuring 3.2 x .5 km in the western corner of the claim block. A northeast-southwest baseline was established and cross-lines were run at 50 metre intervals. Radiometric readings were taken at ground level every 25 metres along lines. Rock and soil samples were collected where the radiometric response exceeded 400 cps.

Between lines 35+00N and 37+00N, where high radioactivity was recorded, two minigrids were established. On minigrid #1 (250 x 100m) radiometric readings were recorded and rock and soil samples collected at stations 10 metres apart along lines positioned at 10 metre intervals. On minigrid #2, 150 metres west of minigrid #1, similar surveys were conducted over a 100 metre² area.

A trench was dug at the site of an anomaly on minigrid #1 and a pit was dug at an anomaly outside the minigrids in the southern portion of the major radiometric grid.

Two geological traverses were conducted over the southwest corner of the grid.

In late August, 35 claims were staked adjacent to the southwest corner of the ELLE claims in order to secure land surrounding the newly found anomalies.



3.2 Logistics

Work on the ELLE claim block was carried out by an 8 man crew based at the Rancheria Motel, Rancheria, Yukon. Mobilization of field personnel and equipment to the Rancheria Motel from the Teslin Motel, Teslin, Yukon, was carried out by truck on August 8, 1979. The following is a list of field personnel involved with work conducted on the ELLE property.

NAME	CLASSIFICATION	STATUS	DATES EMPLOYED IN 1979 ON CLAIM GROUP
G. Delaney	Project geologist	temporary	Aug. 20, 21
B. Oakes	Geologist	permanent	Aug. 20-23, 25, 26, 29
B. Duncan	Geologist	temporary	Aug. 20-26, 29
A. Pasitshniak	Senior assistant	temporary	Aug. 20-25, 29
G. Owskiacki	Senior assistant	temporary	Aug. 20-26, 29
J. Crux	Junior assistant	temporary	Aug. 20-26, 29
B. Skelley	Junior assistant	temporary	Aug. 20-24, 26, 29

Access to the property was by Hughes 500 D helicopter, under seasonal contract with Liftair International of Calgary, Alberta. A.K. Edwards was pilot and engineer.

Expediting services, including radio scheds, and radio contact, were handled during the field season by Archer, Cathro and Associates of Whitehorse, Yukon.

Field crews carried Motorola MH-70FM walkie-talkie radios for communicating with the helicopter. Motels at both base locations provided telephone services.

Geochemical assays of silt, water, soil, rock and heavy mineral samples were provided by Chemex Labs Limited of North Vancouver, British Columbia. The same company also supplied pre-numbered Kraft sample bags, 200 ml plastic bottles and 3 mil plastic sample bags. pH and specific conductivity measurements of water samples were obtained in the field.

3.3 ELLE claim work

3.3.1 Objectives

The objectives of the program were to obtain the radiometric response of a large (3.2 x .5 km) area on the ELLE claims by means of a grid; to further delimit the source of previous anomalies by geochemical analysis of rock, soil, silt, and water samples by means of large scale grids; and to test three important soil anomalies by trenching and further sampling and analysis of soils and rocks of the trench.

3.3.2 Radiometrics

A ground radiometric survey was carried out over a grid covering an area 3.2 by .5 km along a ridge. Readings in counts per second were recorded every 25 metres along lines 50 metres apart on a north-south baseline. The instruments used were Scintrex BGS-1SL total count scintillometers. The contoured results are presented as Figure 6-2b at the end of the report.

.....7

Radiometric surveys were also carried out on minigrids #1 and #2 in order to further define anomalously high radioactivity. Readings were recorded every 10 metres along lines 10 metres apart. Minigrid #1 covers an area 250 by 100 metres and minigrid #2 covers an area 100 by 100 metres.

Radiometric readings were recorded at a trench on minigrid #1 and at a pit in the southern end of the radiometric grid. Radioactivity was also monitored along geology traverses.

3.3.3 Geochemistry

The following table lists the number of samples collected and analysed on the ELLE claims during the 1979 season.

TYPE	COLLECTED	ANALYSED FOR URANIUM	ANALYSED FOR THORIUM
soil	531	531	---
rock	323	323	166
silt	1	1	---
water	1	1	---

Soil and rock samples were collected at all locations exceeding 400 cps on the major radiometric grid. On minigrids #1 and #2, soil samples were collected at all stations, and rock samples were collected whenever there was outcrop. Soil, rock, and water samples were collected on the two geological traverses through the area.

All samples were analysed by Chemex Labs Limited, North Vancouver, British Columbia. A standard fluorometric method was applied to a .25 gram sample of ashed, doubly acidified, -80 mesh fraction material of silt and soil samples. Rocks were crushed and then treated similarly. Water samples were acidified and then analysed fluorometrically. Results are reported on certificates SP1215, 50049-53, 50088-91, 50093, 50344, 50369-70, 50373-78, 50462, 50824-27, 50515, and 66183.

3.3.4 Geological mapping/trenching

The two geological mapping traverses conducted covered the major radiometric grid area and were designed to investigate:

- a) the lithology of the Logjam Stock
- b) the major structural lineaments in the area.

A trench and a pit were dug to investigate two radiometric anomalies in the southern end of the major radiometric grid. The trench, located on minigrid #1, is 18' long, 4' wide and 5' deep. A cross trench dug at one end is 10' long, 4' wide and 1 to 1½' deep. One bulk rock sample along the length of the 18' portion of the trench was collected as well as 13 rock samples every 20cm along the 10' portion. The pit, located at 31+00N, 78+50W on the major radiometric grid, is L shaped and measures 5' x 6' x 3' and is 2' deep. A total of 29 rock samples and 5 soil samples was taken from the pit.

TABLE I
RADIOMETRIC ANOMALIES
ELLE CLAIMS
1979

ANOMALY NUMBER	GRID COORDINATES	RANGE OF VALUES (cps)	NUMBER OF ANOMALOUS VALUES	CORRESPONDING GEOCHEMICAL ANOMALIES	DIMENSIONS
MAJOR RADIOMETRIC GRID					
1	46+50N 73+00W	500-600	2	S-3	250 x 50m
2	48+00N 77+00W	400-500	3	R-2 S-4	350 x 100m
3	42+00N 80+00W	500	1	silt	spot anomaly
4	41+00N 74+00W	400-540	6	-	300 x 200m
5	31+00N 78+00W	400-640	62	R-3,4,5, S-5,6,7,8	900 x 300m
6	34+00N 75+00W	400-410	9	-	300 x 200m
7	28+75N 79+00W	3400	1	R-5 S-8	spot anomaly
MINIGRID #1					
1-1	35+50N 76+80W	500	1	R1-3	spot anomaly
1-2	35+30N 77+20W	400- 450	5	-	40 x 20m
1-3	35+10N 75+90W	400- 650	2	-	15 x 10m
1-4	35+03N 75+45W	650-2000	2	R1-7	20 x 5m
1-5	35+00N 77+00W	400-2000	2	S1-1	20 x 10m
1-6	35+00N 77+30W	400	1	-	spot anomaly
1-7	35+00N 77+70W	400	4	R1-5	30 x 20m
1-8	34+70N 77+90W	400- 480	12	-	50 x 30m
1-9	34+50N 77+00W	400	1	-	spot anomaly
1-10	34+80N 75+70W	400	2	-	20 x 10m
MINIGRID #2					
2-1	36+75N 79+80W	660-1700	3	-	30 x 10m
2-2	36+85N 79+10W	460- 540	5	-	20 x 20m
2-3	37+50N 78+80W	460	1	-	spot anomaly
2-4	36+95N 78+50W	540	1	-	spot anomaly
2-5	36+35N 79+00W	450- 520	3	-	50 x 10m

TABLE II
SOIL GEOCHEMICAL ANOMALIES
ELLE CLAIMS
1979

ANOMALY NUMBER	GRID COORDINATES	RANGE OF VALUE (ppm U)	NUMBER OF ANOMALOUS VALUES	CORRESPONDING GEOCHEMICAL and/or RADIOMETRIC ANOMALIES	DIMENSIONS
MAJOR RADIOMETRIC GRID					
S-1	58+00N 74+00W	118	1	300/230 cps	spot anomaly
S-2	49+00N 75+00W	82	1	-	spot anomaly
S-3	47+75N 73+00W	24	1	1	spot anomaly
S-4	43+00N 77+50W	20-76	3	2, R-2	250 x 25m
S-5	36+00N 80+00W	24.5-42	2	5, R-3	150 x 25m
S-6	33+00N 76+00W	56	1	5	spot anomaly
S-7	31+00N 79+00W	117->400	3	5, R-4	50 x 50m
S-8	28+75N 79+00W	55	1	7, R-5	spot anomaly
S-9	60° 36' 10"N 130° 24' 20"W	47	1	-	spot anomaly
MINIGRID #1					
S1-1	35+00N 77+00W	115	1	1-5	spot anomaly
S1-2	34+80N 77+30W	15	1	-	spot anomaly
S1-3	35+10N 75+70W	13-14.5	2	-	20 x 10m
MINIGRID #2					
S2-1	37+15N 78+80W	10.5-14.5	4	-	30 x 10m
S2-2	37+05N 79+20W	10-10.5	2	-	20 x 10m
S2-3	36+75N 79+90W	13-26	2	-	30 x 10m
S2-4	36+75N 79+70W	14.5	1	-	spot anomaly
S2-5	36+75N 79+00W	10.5-11.5	2	-	25 x 10m
S2-6	36+35N 79+10W	11.5	1	-	spot anomaly
S2-7	36+45N 78+90W	43	1	-	spot anomaly
S2-8	36+35N 78+60W	9-12	4	-	30 x 10m

TABLE III
ROCK GEOCHEMICAL ANOMALIES
ELLE CLAIMS
1979

ANOMALY NUMBER	GRID COORDINATES	RANGE OF VALUES (ppm U)	NUMBER OF ANOMALOUS VALUES	CORRESPONDING GEOCHEMICAL and/or RADIOMETRIC ANOMALIES	DIMENSIONS
MAJOR RADIOMETRIC GRID					
R-1	54+00N 75+50W	42	1	-	spot anomaly
R-2	44+00N 77+50W	18-37	3	2, S-4	150 x 100m
R-3	36+00N 78+00W	22.5-42	2	5	100 x 25m
R-4	31+00N 79+50W	>400	2	5, S-5	50 x 50m
R-5	28+75N 79+00W	>400	1	7, S-8	spot anomaly
MINIGRID #1					
R1-1	35+50N 78+00W	12-14.5	2	-	20 x 10m
R1-2	35+50N 77+60W	12.5-15	4	-	30 x 20m
R1-3	35+50N 77+00W	22	1	1-1	10 x 10m
R1-4	35+20N 77+90W	13.5-24	4	-	30 x 20m
R1-5	35+00N 77+50W	19	1	1-7	spot anomaly
R1-6	34+90N 77+30W	15.5-61	2	-	20 x 10m
R1-7	35+00N 76+50W	12.5	1	1-4	spot anomaly
R1-8	34+70N 76+00W	12	1	-	spot anomaly
R1-9	35+50N 77+20W	12	1	-	spot anomaly
MINIGRID #2					
R2-1	37+15N 78+90W	7.5	1	-	spot anomaly
R2-2	36+95N 78+90W	7	1	-	spot anomaly
R2-3	36+65N 79+50W	13	1	-	spot anomaly
R2-4	36+35N 79+10W	8.5-10.5	2	-	20 x 10m

3.4 Results

3.4.1 Radiometrics

The background radiometric response of the quartz monzonite underlying the major radiometric grid area varies from 200 cps in the northeast to 300 cps in the south. Values greater than or equal to 400 cps are considered anomalous.

A total of 7 radiometric anomalies are present on the grid and values range from 400 to 640 cps (Figure 6-2b, Table 1). Anomalies 1, 2 and 4 are located in the north-central part of the grid. They consist of 100 x 100m clusters of sites with anomalous levels of radioactivity ranging from 400 to 600 cps. Anomaly 4 trends north; anomalies 1 and 2 do not have well defined trends. Of these three anomalies, only 2 and 4 have directly corresponding soil anomalies.

Anomaly 3 is a 500 cps spot anomaly at 42+00N, 80+00W. There is a directly corresponding silt anomaly.

Anomaly 5, the largest of the anomalies, is 800 x 400 metres and covers most of the southern end of the grid. Values recorded during this survey varied from 400 to 640 cps. The 640 cps reading was recorded at 35+50N, 78+00W and is now the location of minigrid #1. One hundred metres north of that location, 600 cps were recorded at a station, and 1700 cps were recorded nearby. Minigrid #2 was established over this anomaly. At 31+00N, 78+00W on anomaly 5, 400 cps were recorded at a station and 6000 cps were recorded nearby. A pit was dug at this location. Anomaly 5 has a north-south trend. There are 5 soil and 4 rock geochemistry anomalies that correspond directly with radiometric highs on anomaly 5.

.....10

Anomaly 6 consists of 6 closely spaced anomalous values ranging from 400 to 480 cps. The 75 x 50m anomaly is on the southwest border of the grid. There is a directly corresponding soil geochemical anomaly.

Anomaly 7 is defined by a 3400 cps spot anomaly at 28+75N, 79+00W. There is a high (>400 ppm) rock geochemical anomaly and a soil geochemical anomaly at that station.

The general trend of the radiometric anomalies on the major grid is northeast-southwest.

The background radiometric response of the rock underlying minigrid #1 is 300 cps. Values greater than or equal to 400 cps are considered anomalous. A total of 10 anomalies are defined in the grid area (Figure 6-3a, Table 1).

Anomalies 1-3, 1-4, and 1-5 are the strongest anomalies and radioactivity recorded was 650 cps, 650-2000 cps, and 400-2000 cps respectively. Anomaly 1-3 consists of one anomalous station while 1-4 and 1-5 consist of two each. They are located along line 35+00N and trend northwest-southeast over a distance of 120 metres. Anomaly 1-5 has a moderately strong (115 ppm U) corresponding soil geochemical anomaly, anomaly 1-4 has a weak rock geochemical anomaly coincident with it and there is no other expression of anomaly 1-3.

Anomalies 1-7 and 1-6, mentioned below, are in line with anomalies 1-3, 1-4, and 1-5. Anomalies 1-1, 1-2, 1-6, and 1-7, form a line of small clusters of anomalous stations, ranging in value from 400 to 500 cps, trending west northwest - east southeast.

Anomaly 1-8 is in line with the 4 above mentioned anomalies. It is longer (40 x 40m) but values range only from 400 to 480 cps.

Only anomalies 1-1 and 1-7 have directly corresponding geochemical anomalies.

Anomalies 1-9 and 1-10 are both weak spot anomalies yielding 400 cps. Neither has corresponding geochemical anomalies.

The background radiometric response of the minigrid #2 is 350 cps, slightly higher than minigrid #1. Areas on the minigrid exceeding 450 cps are considered anomalous.

A total of 5 anomalous areas are defined on minigrid #2 (Figure 6-4a, Table 1). Anomaly 2-1 consists of three anomalous stations ranging from 460 to 1700 cps. The northwest-southeast trending anomaly is located in the northwest end of the grid and is coincident with two weak soil geochemical anomalies. Anomaly 2-2 consists of four anomalous stations ranging from 500 to 540 cps. It is oriented north-south, and is located in the centre of the grid. Anomaly 2-3 is a 460 cps spot anomaly 25 metres east of anomaly 2-2. Anomaly 2-4 is a 540 cps spot anomaly and lies on the eastern edge of the grid. It is also coincident with weak soil geochemical anomalies. The above mentioned anomalies form a strong northwest-southeast lineament.

Anomaly 2-5, located along the southern border of the grid, consists of 3 anomalous stations ranging from 450 to 520 cps that parallel the trench of the anomalies to the north. There is a series of soil geochemical spot anomalies, 10 metres to the north which trend parallel to anomaly 2-5. There is also a weak rock geochemical spot anomaly.

Radioactivity measured along the bottom of the trench on minigrid #1 ranged from 320 to 1600 cps.

At the pit (31+00N, 78+50W) radioactivity measured at surface before digging, was 6000 cps. At the bottom of the trench, at bedrock, radiometric readings were off scale (>10,000 cps).

3.4.2 Geochemistry

a) Soil geochemistry

In the area covered by the major radiometric grid, the background value for uranium-in-soils is 2.5 ppm. Any value that is equal or greater than 20 ppm is considered anomalous. There are 9 soil anomalies in the major grid area (Figure 6-2e, Table 2). Values range from 20 to >400 ppm U. The samples with the highest uranium content are in the area of the pit on radiometric anomaly 5. Anomaly 5 is located in the area of the two minigrids and is defined by two values: 24.5 ppm U and 42 ppm U. Anomaly 4 corresponds to radiometric anomaly 2 and values varie from 20 to 76 ppm U. The other anomalies are spot values. It is pointless to describe the trend of the anomalies, as all soil samples were collected at locations of high radioactivity (>400 cps) and, therefore, the trend of the soil anomalies parallels the radiometric anomalies. Even though the soil samples were taken at points of high radioactivity, not all were anomalous in uranium, and of the anomalous samples, only S-4, S-5, S-7, and S-8 had directly corresponding rock geochemical anomalies.

On minigrid #1, the background value for uranium-in-soils is 3 ppm. In order to detect soils anomalous in uranium content, any sample with a value equal to or greater than 10 ppm U is considered significant. Three anomalies are defined on minigrid #1 (Figure 6-3d, Table 2). Anomaly S1-1 is defined by one sample which contained 115 ppm U.

Anomaly S1-2 is a weak spot anomaly (15 ppm) 25 metres west of S1-1. Anomaly S1-3 is defined by 2 samples with values of 13 and 14.5 ppm U. These three anomalies form a northwest-southeast trending line. Lower values, between 6 and 10 ppm U, suggest a less penetrating trend east-west.

On minigrid #2, the background value for uranium-in-soils is 4 ppm. Soils with uranium content greater than or equal to 10 ppm, are considered anomalous. Eight anomalies have been defined on minigrid #2 (Figure 6-4d, Table 2). Anomaly S2-1 is a weak anomaly consisting of 4 values ranging from 10.5 to 14.5 ppm U. The anomaly is oriented in a northeast-southwest direction. Anomaly S2-2 consists of two weakly anomalous soils (10 and 10.5 ppm U) trending northwest-southeast. Anomalies S2-3 and S2-4 are both spot anomalies with 14.5 and 26 ppm U. They are located in the northwest of the grid and trend northwest-southeast. S2-5, in the centre of the grid, consists of two anomalous soils oriented in a north-south direction. They contain 10.5 and 11.5 ppm U. Anomalies S2-6 and S2-7 consist of two spot anomalies with samples values of 11.5 and 43 ppm U. Located in the southwest end of the grid, they are oriented west northwest - east southeast. Anomaly S2-8 consists of two weakly anomalous samples (10 and 12 ppm U) in the south corner of the grid.

The preferred orientation of the anomalies on minigrid #2 is west northwest - east southeast. A less penetrating trend northwest-southeast is also evident.

Of the 5 soil samples collected at the pit at 31+00N, 78+50W, 3 contained over 400 ppm U, the two remaining samples contained 223 and 335 ppm U.

b) Rock geochemistry

In the area covered by the major radiometric grid, the background value for uranium-in-soils is 3 ppm. Samples with higher than 15 ppm U are considered anomalous. Five (Figure 6-2d, Table 3) anomalies are defined in the grid area. Anomaly R-1 is a 42 ppm U spot anomaly. Anomaly R-2 is a group of 3 anomalous values over an area of 150 x 100m and ranging in value from 18-37 ppm U. Anomaly R-3 is located in the area of the minigrids and consists of 2 anomalous values, 18 and 37 ppm U. Anomaly R-4 is located at the pit and is defined by two rod samples with values >400 ppm U lying within a 50 x 50m area. Anomaly R-5 is a >400 ppm U spot anomaly.

On minigrid #1, the background value for uranium in rock is 3 ppm. Rocks with uranium content greater or equal to 12 ppm are considered anomalous. A total of nine anomalies are defined on the grid (Figure 6-3c, Table 3). R1-1, R1-3, and R1-9 are weak spot anomalies varying from 12 to 22 ppm U. Anomaly R1-2 is larger (20 x 30m) and consists of 4 anomalous samples. All four form a northwest trending line on the northeast border of the grid. Anomalies R1-4, R1-5, and R1-6 form a north-south trending line of stronger anomalies with maximum uranium contents of 24, 19, and 61 ppm respectively. Anomalies R1-7 and R1-8 are weak spot anomalies in the southern half of the grid.

The anomalies on minigrid #1 form lines trending northwest-southeast and north-south.

On minigrid #2 the background value for uranium in rock is 1 ppm. Values greater than or equal to 7 ppm U are considered anomalous. Four anomalies are defined on minigrid #2 (Figure 6-4c, Table 3). They are all weak, and with the exception of anomaly R2-4 which consists of two values, are all spot anomalies. Uranium content varies from 7 to 13 ppm U.

A bulk rock sample, taken along the bottom of the 18' portion of the trench on minigrid #1, contained 119 ppm U. Samples taken every 20cm along the 10' portion contained from 1.5 to 158 ppm U.

At the pit (31+00N, 78+50W) 14 rock samples were collected and analysed for uranium. Five of these rock samples from one end of the pit had greater than 2000 ppm uranium. Samples from the other end of the pit, 7 feet away, varied in uranium content from 625 to 1065 ppm.

3.4.3 Geological mapping

The major radiometric grid is largely underlain by very coarse-grained biotite-quartz monzonite porphyry (Figure). Some shear zones exhibit mylonitization which may include cataclasites.

The dominant structural trend is northwest to southeast and is defined by major faults and folding.

3.4.4 Discussion

The major radiometric grid was useful in locating areas of anomalous radiometric and geochemical responses suitable for more detailed work in the form of minigrids and trenches.

With the exception of anomalies 4 and 6, all the anomalies on the major radiometric grid correspond directly with rock, soil or silt geochemical anomalies.

On minigrids #1 and #2, however, there are many anomalies that do not have directly corresponding rock geochemical anomalies. There are several reasons for this discrepancy:

- 1 - There may have been no rock sample taken from radiometric anomalies (1-3, 1-5, and 2-5).
- 2 - High radiometric response may be due to thorium and/or potassium rather than uranium.
- 3 - Rare earth (yttrium, erbium, and cerium) constituents of the mineral euxinite may be contributing gamma radiation.

In the case of thorium, assays show that the rocks varie from 20 to 50 ppm and in one instance a sample (#8720) contained 390 ppm Th and >10,000 ppm K.

In the case of the rare earths, preliminary studies currently in progress have suggested an abundance of euxinite.

The last two factors would result in high total count radioactivity even if there is very little uranium. The low uranium content of rock sample 2000 (2.0 ppm), taken from a location (on anomaly 2-1) where 1700 cps were recorded, may be due to a plotting error.

The lack of soil geochemistry anomalies which directly coincide with radiometric anomalies may be due to remobilized uranium in surface material or remobilized uranium in the rock. In the first case, uranium leached out of rock with high uranium content is transported downslope and deposited in soils which overlie rock with lower uranium content and, therefore, low radiometric response. In the second case, mobile uranium may make its way through fractures and become concentrated in an adjacent area, thereby increasing the uranium content

of the overlying soil through weathering. If this is a recent occurrence, the radiometric response may be low, even though there is a soil geochemical anomaly, because of the young uranium not being in secular equilibrium.

On the major radiometric grid, the general trend of the radiometric data is northeast. The trend reflects the orientation of the ridge on which the grid was established rather than the general structural trend.

On minigrids #1 and #2, the radiometric data has a definite northwest-southeast trend and a less pronounced west northwest - east southeast trend. These trends parallel the general structural trend as expressed by folds, faults, fractures, and shear zones. Although less pronounced, the soil and rock geochemistry has a similar trend. This reinforces the belief that mineralization occurs in shear zones, most of which trend northwest-southeast.

The trench and pit proved successful in enhancing the anomalies by exposing the underlying bedrock.

Of the two holes dug at anomalies, the pit was particularly successful with radiometric response off scale ($>10,000$) and the rock containing over 2000 ppm uranium. Further evaluation of the pit cannot be undertaken until the rock is blasted and assays yielding more precise results are obtained.

IV - CONCLUSIONS

- (1) The ELLE property is underlain by Jurassic or Cretaceous medium to very coarse-grained biotite-quartz monzonite porphyry of the Logjam stock.
- (2) The regional structural trend on the ELLE property is N45°W.
- (3) The majority of the radiometric anomalies overlying minigrids #1 and #2 trend N45°W. The remainder lie between N65°W and N90°W.
- (4) The majority of the rock and soil geochemical anomalies parallel the radiometric anomalies.
- (5) Shear zones, the general trend of which is N45°W, have a higher radiometric response and higher uranium content than the surrounding rocks.
- (6) The abundance of euxenite and/or thorium may account, at some sites, for high total count gamma radiation and low uranium content in rocks.

V - RECOMMENDATIONS

The following is a list of recommendations covering the ELLE property and resulting from the 1979 field program:

- (1) All structural lineaments as identified by examining air photographs, should be plotted on all base maps.
- (2) Fractures, faults, and associated shear zones in the area of the major grid should be mapped by means of a ground survey.
- (3) After recommendations (1) and (2) have been carried out, the geochemical and radiometric data should be re-evaluated.
- (4) Rock samples taken from locations of high radioactivity should be analysed for total rare earth and a breakdown of these requested.
- (5) Anomaly 7 should be further examined in detail using a 25 x 25m grid.
- (6) The rock under all anomalous zones should be exposed by means of trenches and then radiometric rock and soil geochemical surveys conducted.
- (7) The trench, pit and anomaly 7 should be blasted and fresh samples collected and analysed.
- (8) Profiles should be collected of the shot holes by collecting rock powder as the hole is being drilled. These should be analysed for uranium.

- (9) A close examination of the geochemical environment of the ELLE property should be undertaken. This is to include soil profiling, bulk sampling, 32-element spectrographic analysis, and total dissolved solids analysis of the more important anomalies.

REFERENCES

- Eldorado Nuclear Limited (1980) Exploration Monthly Report, February.
- Olsson, W. (1979) Project 528 - 1978 Final Report, Eldorado Nuclear Limited, unpublished.
- Onasick, E.P. (1977) EYP Project - 1977 Final Report, Archer, Cathro and Associates Limited, unpublished.
- Poole, W.H. (1955) Wolf Lake, Yukon Territory (Preliminary Map with Marginal Notes), Geological Survey of Canada, Paper 55-21, Map 55-21, Ottawa.
- Poole, W.H., Roddick, J.A. and Green, L.H. (1960)
Wolf Lake map-area, Yukon Territory;
Geological Survey of Canada, Map 10-1960, Ottawa.

APPENDIX
Certificates of analyses



CHEMEX LABS LTD.

212 BROOKSBANK AVE.
 NORTH VANCOUVER, B.C.
 CANADA V7J 2C1
 TELEPHONE: ██████████ 984-0221
 AREA CODE: 604
 TELEX: 043-52597

• ANALYTICAL CHEMISTS ••GEOCHEMISTS ••REGISTERED ASSAYERS

CERTIFICATE OF ANALYSIS

TO: Eldorado Nuclear Mines Ltd.,
 400 - 255 Albert St.,
 Ottawa, Ont.
 K1P 6A9

CERTIFICATE NO. 50824
 INVOICE NO. 33229 (U)
 34011 (Th) -
 RECEIVED September 21, 1979
 ANALYSED Nov. 26/79

ATTN: AREA ELLE - ROCK

SAMPLE NO. :	PPM		
	U	Th	
22 - 1429	2.0	17	340
1430	6.5	37	340
1431	5.5	32	400
1432	6.5	29	360
1433	19.0	19	400
1434	2.0	21	380
1435	1.0	31	360
1436	<0.5	< 1	340
1437	5.0	41	340
1438	7.5	38	410
1439	5.0	38	340
1440	0.5	5	360
1441	3.5	25	340
1442	4.0	42	300
1443	1.5	30	320
1444	1.0	37	340
1445	1.5	30	300
1446	5.0	29	380
1447	9.0	35	360
1448	9.5	37	350
1449	61	20	340
1450	15.5	49	340
1451	6.5	34	340
1452	8.0	18	360
1453	4.0	31	380
1454	7.0	42	360
1455	3.0	29	360
1456	5.0	46	360
1457	6.5	41	360
1458	2.0	2	340
1459	5.0	46	340
1460	6.5	33	380
1461	12.5	48	360
1462	9.0	56	400
1463	6.5	48	380
1464	2.0	42	360
1465	2.0	34	340
1466	3.0	40	440
1467	4.0	32	400
22 - 1468	7.0	35	360



MEMBER
 CANADIAN TESTING
 ASSOCIATION

CERTIFIED BY: *J. F. Madam*



CHEMEX LABS LTD.

212 BROOKSBANK AVE.
 NORTH VANCOUVER, B.C.
 CANADA V7J 2C1
 TELEPHONE: 984-0221
 AREA CODE: 604
 TELEX: 043-52597

• ANALYTICAL CHEMISTS • GEOCHEMISTS • REGISTERED ASSAYERS

CERTIFICATE OF ANALYSIS

CERTIFICATE NO. 50825

TO: Eldorado Nuclear Mines Ltd.,
 400 - 255 Albert St.,
 Ottawa, Ont.
 K1P 6A9

INVOICE NO. 33229 (U)
 RECEIVED 34011 (Th)
 September 21, 1979
 ANALYSED Nov. 26/79

ATTN: AREA ELLE - ROCK

SAMPLE NO. :	PPM U	PPM Th	
22 - 1469	8.0	32	360
1470	6.5	34	300
1471	3.0	36	360
1472	3.5	38	360
1473	12.0	32	360
1474	10.5	42	360
1475	8.5	33	360
1476	4.5	26	360
1477	4.0	37	360
1478	5.0	22	360
1853	2.0	10	300 250
1854	5.0	13	360 240
1858	1.5	32	360 270
1859	3.5	28	360 250
1865	7.5	22	360 260
1867	0.5	3	360 250
1870	3.5	43	360 270
1874	5.5	24	360 360
1925	12.5	19	360 200
1934	7.5	31	360 375
1936	22.0	47	360 500
1943	1.5	20	360 250
1958	4.5	51	360 320
1960	1.0	6	360 360
1964	1.5	12	360 280
1965	3.5	22	360 250
1967	1.0	3	360 250
1972	1.0	20	360 280
22 - 1980	0.5	2	360
5514	7.0	36	260
5515	6.5	37	260
5516	2.5	45	260
5517	9.5	44	240
5518	15.0	19	230
5519	3.5	39	250
5520	10.5	48	260
5521	6.0	36	260
5522	5.0	30	270
5523	1.0	38	240
5524	11	38	260



MEMBER
 CANADIAN TESTING
 ASSOCIATION

CERTIFIED BY:

J. F. [Signature]



CHEMEX LABS LTD.

212 BROOKSBANK AVE.
 NORTH VANCOUVER, B.C.
 CANADA V7J 2C1
 TELEPHONE: 565-6848 984-0221
 AREA CODE: 604
 TELEX: 043-52597

• ANALYTICAL CHEMISTS • GEOCHEMISTS • REGISTERED ASSAYERS

CERTIFICATE OF ANALYSIS

TO: Eldorado Nuclear Ltd.,
 Ste. 400 - 255 Albert St.,
 Ottawa, Ont.
 K1P 6a9
 ATTN: Area ELLE - Rocks

CERTIFICATE NO. 50826
 INVOICE NO. 33229
 RECEIVED 34011 (Th) -
 Sept. 21/79
 ANALYSED Oct. 16/79

SAMPLE NO. :	PPM	PPM	1
	U	Th	
22-5525	3.0	48	250
5526	7.5	36	260
5527	12.5	34	270
5528	13.0	46	230
5529	1.0	46	230
5530	2.5	29	250
5531	0.5	1	240
5532	6.5	27	270
5533	15.5	12	220
5534	13.5	36	270
5535	14.5	28	230
5536	5.0	43	300
5537	3.0	36	220
5538	6.0	34	250
5539	19.5	44	250
5540	12.5	37	240
5541	1.5	7	230
5542	24.0	58	280
5543	10.0	38	270
5544	10.5	39	260
5545	4.0	26	280
5546	6.0	56	260
5547	7.5	57	280
5548	10.0	53	240
22-5549	2.0	13	270
22-5592	2.5	14	250
5593	8.0	57	260
5594	12.0	69	250
5595	7.5	27	240
5596	1.5	6	250
5597	8.0	47	270
5598	8.5	55	280
22-5599	9.5	57	250
22-7959	1.5	7	220
7961	5.5	21	340
7962	4.0	23	320
7963	11.0	40	330
7964	4.0	4	340
7965	6.5	35	300
7966	10.0	11	320
22-7969	4.0	29	250



MEMBER
 CANADIAN TESTING
 ASSOCIATION

CERTIFIED BY: *J. F. Madam*



CHEMEX LABS LTD.

212 BROOKSBANK AVE.
 NORTH VANCOUVER, B.C.
 CANADA V7J 2C1
 TELEPHONE: 984-0221
 AREA CODE: 604
 TELEX: 043-52597

• ANALYTICAL CHEMISTS • GEOCHEMISTS • REGISTERED ASSAYERS

CERTIFICATE OF ANALYSIS

TO: Eldorado Nuclear Ltd.
 Ste. 400 - 255 Albert St.
 Ottawa, Ont.
 K1P 6A9

ATTN: Area Elle Rocks

CC. W. Olsson

CERTIFICATE NO. 50369

INVOICE NO. 32629

RECEIVED Sept. 1/79

ANALYSED Sept. 17/79

SAMPLE NO. :		PPM	
		U	
22 - 1992	Q2MZ	8.0	600
22 - 1993	Q2MZ	4.5	530
22 - 5550	"	2.5	440
5551	"	3.0	440
5552	"	5.0	420
5555	"	3.0	240
5558	"	10.0	300
5559	"	46	420
5560	"	60	720
5562	"	8.0	420
5565	"	3.5	250
22 - 5572	"	3.5	280
22 - 5784	"	37	600
5785	"	10.0	750
5786	"	18.0	500
5787	"	24.0	750
5792	"	6.0	600
5795	"	8.5	660
5796	"	3.5	540
5798	"	3.5	750
22 - 5799	"	1.0	540
22 - 5800	"	3.0	500
5801	"	> 400	1000
5802	"	5.5	500
5803	"	3.5	860
5804	"	> 400	3400
5805	"	> 400	2400
22 - 5805A	"	180	2400
22 - 7985	"	158	1500
7986	"	23.5	900
7987	"	22.5	1100
7988	"	151	1600
7989	"	56	1100
7990	"	78	900
7991	"	15.0	600
7992	"	18.5	830
7993	"	43	770
7994	"	11.5	5800
7995	"	1.5	520
22 - 7996	"	6.0	380



MEMBER
 CANADIAN TESTING
 ASSOCIATION

CERTIFIED BY:

Hart Biele



CHEMEX LABS LTD.

212 BROOKSBANK AVE.
 NORTH VANCOUVER, B.C.
 CANADA V7J 2C1
 TELEPHONE: [REDACTED] 984-0221
 AREA CODE: 604
 TELEX: 043-52597

• ANALYTICAL CHEMISTS • GEOCHEMISTS • REGISTERED ASSAYERS

CERTIFICATE OF ANALYSIS

TO: Eldorado Nuclear Ltd.
 Ste. 400 - 255 Albert St.
 Ottawa, Ont.
 K1P 6A9

ATTN: Area ELle Rock

CC. W. Olsson

CERTIFICATE NO. 50370

INVOICE NO. 32629

RECEIVED Sept. 1/79

ANALYSED Sept. 17/79

SAMPLE NO. :		PPM		PPB	
		U		Au	
22 - 7997	gemz	32	320		
22 - 8416	"	13.0	400		
8418	"	4.5	400		
8424	"	2.0	350		
8431	"	8.5	320		
8439	"	10.5	350		
8440	"	6.5	320		
8441	"	1.0	400		
22 - 8442	"	5.5	450		
22 - 8706	"	11.0	3750		1
8708	"	5.0	4800		
8709	"	9.5	360		
8711	"	7.0	470		under Tc1
8712A	MLNT	9.5	290		< 10
8712B	cut	42	800		
8713	flam	13.0	745		
8715	"	5.5	700		
22 - 8719	"	3.0	170		
22 - 9027	"	2.0	700		
9028	"	5.0	360		
9029	"	4.5	370		
9032	"	22.5	500		
22 - 9033	"	0.5	600		



MEMBER
 CANADIAN TESTING
 ASSOCIATION

CERTIFIED BY: Hart Biddle



CHEMEX LABS LTD.

212 BROOKSBANK AVE.
 NORTH VANCOUVER, B.C.
 CANADA V7J 2C1
 TELEPHONE: [REDACTED] 984-0221
 AREA CODE: 604
 TELEX: 043-52597

• ANALYTICAL CHEMISTS • GEOCHEMISTS • REGISTERED ASSAYERS

CERTIFICATE OF ANALYSIS

TO: Eldorado Nuclear Ltd.,
 Ste. 400- 255 Albert St.,
 Ottawa, Ont.
 K1P 6A9

ATTN: ELLE

CERTIFICATE NO. SP 1215

INVOICE NO. 33202

RECEIVED September 9, 1979

ANALYSED October 14, 1979

SAMPLE NO. :	Lower Concentration Limit (PPM)	22-8720	22-7997B
Antimony	50	bcl	bcl
Arsenic	50	bcl	bcl
Barium	5	3000	200
Beryllium	5	bcl	bcl
Bismuth	5	bcl	bcl
Boron	20	20	bcl
Cadmium	20	bcl	bcl
Calcium	0.05%	0.5%	0.7%
Chromium	10	50	70
Cobalt	10	bcl	bcl
Copper	1	2	3
Gallium	5	15	15
Germanium	20	bcl	bcl
Indium	50	bcl	bcl
Iron	0.05%	0.2%	0.2%
Lead	5	70	20
Magnesium	0.02%	0.2%	0.1%
Manganese	5	70	150
Molybdenum	10	bcl	bcl
Nickel	5	bcl	bcl
Niobium	50	300	< 100
Silver	1	bcl	bcl
Strontium	2	700	200
Tellurium	200	bcl	bcl
Thorium	200	bcl	bcl
Tin	10	bcl	bcl
Titanium	5	1500	100
Vanadium	20	< 100	< 100
Zinc	50	bcl	bcl
Zirconium	20	30	bcl

SEMI QUANTITATIVE SPECTROGRAPHIC ANALYSES

>5000 ppm => 5000 ppm 50 ppm = 25-100 ppm
 5000 ppm = 2500-10000 ppm 20 ppm = 10-50 ppm
 2000 ppm = 1000-4000 ppm 10 ppm = 5-20 ppm
 1000 ppm = 500-2000 ppm 5 ppm = 2-10 ppm

500 ppm = 250-1000 ppm 2 ppm = 1-4 ppm
 200 ppm = 100-400 ppm 1 ppm = 0.5-2 ppm
 100 ppm = 50-200 ppm bcl = below concentration limit
 Ranges for Iron, Calcium & Magnesium are reported in %



MEMBER
 CANADIAN TESTING
 ASSOCIATION

CERTIFIED BY: *[Signature]*



CHEMEX LABS LTD.

212 BROOKSBANK AVE.
 NORTH VANCOUVER, B.C.
 CANADA V7J2C1
 TELEPHONE: 984-0221
 AREA CODE: 604
 TELEX: 04-352587

• ANALYTICAL CHEMISTS • GEOCHEMISTS • REGISTERED ASSAYERS

CERTIFICATE OF ANALYSIS

TO: Eldorado Nuclear Ltd.,
 Ste. 400 - 255 Albert St.,
 Ottawa, Ont.
 K1P 6A9

ATTN: Project 528 Elle Soil

CC. W. Olsson

CERTIFICATE NO. 50051

INVOICE NO. 32465

RECEIVED Aug. 23/79

ANALYSED Sept. 7/79

SAMPLE NO. : PREFIX	PPM	
1429	3.0	
1430	1.5	
1431	2.5	
1432	1.5	
1433	4.5	
1434	3.0	<i>Plotted r/c</i>
1435	0.5	
1436	0.5	
1437	1.0	
1438	1.0	
1439	0.5	
1440	1.5	
1441	1.5	
1442	2.0	
1443	0.5	
1444	2.5	
1445	1.5	
1446	1.5	
1447	2.5	
1448	1.0	
1449	0.5	<i>Plotted r/c</i>
1450	15.0	
1451	2.0	
1452	1.0	
1453	3.0	
1454	2.0	
1455	4.5	
1456	5.5	
1457	3.5	
1458	5.5	
1459	2.5	
1460	1.0	
1461	1.0	
1462	3.0	<i>Plotted r/c</i>
1463	3.5	
1464	2.0	
1465	3.0	
1466	3.5	
1467	3.0	
1468	2.0	



MEMBER
 CANADIAN TESTING
 ASSOCIATION

CERTIFIED BY: *Hart Biddle*



CHEMEX LABS LTD.

212 BROOKSBANK AVE.
 NORTH VANCOUVER, B.C.
 CANADA V7J2C1
 TELEPHONE: 984-0221
 AREA CODE: 604
 TELEX: 04-352597

• ANALYTICAL CHEMISTS • GEOCHEMISTS • REGISTERED ASSAYERS

CERTIFICATE OF ANALYSIS

TO: Eldorado Nuclear Ltd.,
 Ste. 400 - 255 Albert St.,
 Ottawa, Ont.
 K1P 6A9

ATTN: Project 528 Area Elle

CC. W. Olsson

CERTIFICATE NO. 50088

INVOICE NO. 32467

RECEIVED Aug. 23/79

ANALYSED Sept. 7/79

SAMPLE NO. :	PPM	
PREFIX 40 U		
1479	8.0	
1480	5.5	
1481	5.0	
1482	5.0	
1483	5.0	
1484	5.0	
1485	4.0	
1486	4.5	
1487	1.5	
1488	3.0	
1489	4.5	<i>plotted</i>
1490	3.0	
1491	2.0	
1492	0.5	
1493	4.5	
1494	3.0	<i>rep.</i>
1495	6.5	
1496	2.0	
1497	4.5	
1498	7.0	
1499	5.0	
1500	4.0	
1881	2.5	
1882	4.5	
1883	4.0	
1884	3.0	
1885	5.0	
1886	3.5	<i>plotted rep.</i>
1887	4.0	
1888	5.0	
1889	2.5	
1890	13.0	
1891	14.5	
1892	6.0	
1893	3.0	
1894	5.0	
1895	4.5	
1896	5.0	
1897	3.0	
1898	3.0	



MEMBER
 CANADIAN TESTING
 ASSOCIATION

CERTIFIED BY: *Hart Biddle*



CHEMEX LABS LTD.

212 BROOKSBANK AVE.
 NORTH VANCOUVER, B.C.
 CANADA V7J2C1
 TELEPHONE: 984-0221
 AREA CODE: 604
 TELEX: 04-352597

• ANALYTICAL CHEMISTS • GEOCHEMISTS • REGISTERED ASSAYERS

CERTIFICATE OF ANALYSIS

TO: Eldorado Nuclear Ltd.,
 Ste. 400 - 255 Albert St.,
 Ottawa, Ont.
 K1P 6A9

ATTN: Project 528 Elle Soil

CC.W.Olsson

CERTIFICATE NO. 50052

INVOICE NO. 32465

RECEIVED Aug. 23/79

ANALYSED Sept. 7/79

SAMPLE NO. :	PPM	
	U	
PREFIX 40		
1469	3.0	
1470	3.0	
1471	3.5	
1472	3.0	
1473	3.0	<i>Plotted</i> <i>FO</i>
1474	1.5	
1475	2.5	
1476	2.0	
1477	1.0	
1478	2.0	
1919	115	
1920	2.0	
1921	2.0	
1922	2.0	
1923	0.5	
1924	1.0	
1925	4.0	
1926	2.0	
	41927	1.5
1928	1.5	
1929	2.5	
1930	3.5	
1931	1.5	
1932	2.0	
1933	2.5	<i>Plotted</i> <i>FO</i>
1934	3.5	
1935	3.5	
1936	3.0	
1937	5.5	
1938	3.5	
1939	3.5	
1940	2.5	
1941	2.0	
1942	2.5	
1943	3.0	
1944	1.0	
1945	3.5	
1946	2.0	
1947	8.5	
1948	2.0	



MEMBER
 CANADIAN TESTING
 ASSOCIATION

CERTIFIED BY:

Hart Bielle



CHEMEX LABS LTD.

212 BROOKSBANK AVE.
 NORTH VANCOUVER, B.C.
 CANADA V7J2C1
 TELEPHONE: 984-0221
 AREA CODE: 604
 TELEX: 04-352597

• ANALYTICAL CHEMISTS • GEOCHEMISTS • REGISTERED ASSAYERS

CERTIFICATE OF ANALYSIS

TO: Eldorado Nuclear Ltd.,
 Ste. 400 - 255 Albert St.,
 Ottawa, Ont.
 K1P 6A9

ATTN: Project 528 Elle Soil

CC. W. Olsson

CERTIFICATE NO. 50053

INVOICE NO. 32465

RECEIVED Aug. 23/79

ANALYSED Sept. 7/79

SAMPLE NO.	PPM
1949	2.0
1950	3.5
1951	2.5
1952	4.5
1953	2.5
1954	1.5
1955	3.0
1956	1.5
1957	2.0
1958	1.0
1959	1.0
1960	1.5
1961	1.0
1962	1.5
1963	2.0
1964	0.5
1965	2.0
1966	2.0
1967	1.5
1968	2.0
1969	2.0
1970	1.5
1971	0.5
1972	0.5
1973	0.5
1974	1.0
1975	3.0
1976	2.0
1977	0.5
1978	3.0
1979	3.0
1980	5.0

plotted

rep



MEMBER
 CANADIAN TESTING
 ASSOCIATION

CERTIFIED BY: Hart Biddle



CHEMEX LABS LTD.

212 BROOKSBANK AVE.
 NORTH VANCOUVER, B.C.
 CANADA V7J2C1
 TELEPHONE: 984-0221
 AREA CODE: 604
 TELEX: 04-352597

• ANALYTICAL CHEMISTS • GEOCHEMISTS • REGISTERED ASSAYERS

CERTIFICATE OF ANALYSIS

TO: Eldorado Nuclear Ltd.,
 Ste. 400 - 255 Albert St.,
 Ottawa, Ont.
 K1P 6A9

ATTN: Project 528 Elle Soil

CC. W. Olsson

CERTIFICATE NO. 50049

INVOICE NO. 32465

RECEIVED Aug. 23/79

ANALYSED Sept. 7/79

SAMPLE NO. :	PPM	
	U	
PREFIX 40		
1850	2.0	
1851	1.5	
1852	2.0	
1853	1.5	
1854	3.5	
1855	2.5	
1856	3.5	
1857	5.0	
1858	2.5	
1859	2.5	
1860	2.5	
1861	3.5	
1862	5.0	
1863	1.5	<i>Plotted rep.</i>
1864	2.5	
1865	3.5	
1866	4.5	
1867	2.0	
1868	3.5	
1869	7.5	
1870	4.5	
1871	8.0	
1872	3.5	
1873	3.0	
1874	3.0	
1875	2.5	
1876	3.0	
1877	1.5	
1878	4.0	
7959	2.0	
7960	1.5	
7961	2.0	
7962	1.0	
7963	0.5	
7964	6.5	<i>Plotted rep.</i>
7965	1.5	
7966	2.0	
7967	2.0	
7968	1.5	
7969	1.5	



MEMBER
 CANADIAN TESTING
 ASSOCIATION

CERTIFIED BY:

Hart Biele



CHEMEX LABS LTD.

212 BROOKSBANK AVE.
 NORTH VANCOUVER, B.C.
 CANADA V7J2C1
 TELEPHONE: 984-0221
 AREA CODE: 604
 TELEX: 04-352597

• ANALYTICAL CHEMISTS • GEOCHEMISTS • REGISTERED ASSAYERS

CERTIFICATE OF ANALYSIS

TO: Eldorado Nuclear Ltd.,
 Ste. 400 - 255 Albert St.,
 Ottawa, Ont.
 K1P 6A9

ATTN: Project 528 Area Elle

CC. W. Olsson

CERTIFICATE NO. 50089

INVOICE NO. 32467

RECEIVED Aug. 27/79

ANALYSED Sept. 7/79

SAMPLE NO. :	PPM	
PREFIX		
1899	3.0	Plotted rep rep rep rep rep rep rep rep rep
1900	1.5	
1981	3.5	
1982	3.5	
1983	0.5	
1984	3.5	
1985	4.5	
1986	3.5	
1987	2.0	
1988	3.0	
1989	3.5	Plotted rep rep rep rep rep rep rep rep rep
1990	2.5	
5514	2.5	
5515	2.5	
5516	2.0	
5517	3.5	
5518	3.5	
5519	3.0	
5520	3.5	
5521	4.0	
5522	6.0	Plotted rep rep rep rep rep rep rep rep rep
5523	3.0	
5524	6.5	
5525	3.5	
5526	4.5	
5527	3.0	
5528	3.0	
5529	1.5	
5530	3.0	
5531	3.0	
5532	6.5	Plotted rep rep rep rep rep rep rep rep rep
5533	6.0	
5534	4.5	
5535	6.0	
5536	2.5	
5537	3.0	
5538	2.0	
5539	4.0	
5540	4.0	
5541	4.5	



MEMBER
 CANADIAN TESTING
 ASSOCIATION

CERTIFIED BY: Hart Biele



CHEMEX LABS LTD.

212 BROOKSBANK AVE.
NORTH VANCOUVER, B.C.
CANADA V7J2C1
TELEPHONE: 984-0221
AREA CODE: 604
TELEX: 04-352597

• ANALYTICAL CHEMISTS • GEOCHEMISTS • REGISTERED ASSAYERS

CERTIFICATE OF ANALYSIS

TO: Eldorado Nuclear Ltd.,
Ste. 400 - 255 Albert St,
Ottawa, Ont.
K1P 6A9

ATTN: Project 528 Elle Soil CC. W. Olsson

CERTIFICATE NO. 50050

INVOICE NO. 32465

RECEIVED Aug. 23/79

ANALYSED Sept. 7/79

SAMPLE NO. :	PPM	
PREFIX 40 U		
7970	1.5	
7971	3.0	
7972	2.0	
7973	2.0	
7974	2.0	
7975	1.5	<i>CP</i>
7976	2.5	
7977	1.0	
7978	1.5	
7979	1.5	
7980	2.0	
7981	1.5	
7982	2.0	
7983	1.5	
7984	1.5	



MEMBER
CANADIAN TESTING
ASSOCIATION

CERTIFIED BY: *Hart Bille*



CHEMEX LABS LTD.

212 BROOKSBANK AVE.
 NORTH VANCOUVER, B.C.
 CANADA V7J2C1
 TELEPHONE: 984-0221
 AREA CODE: 604
 TELEX: 04-352597

• ANALYTICAL CHEMISTS • GEOCHEMISTS • REGISTERED ASSAYERS

CERTIFICATE OF ANALYSIS

TO: Eldorado Nuclear Ltd.,
 Ste. 400 - 255 Albert St.,
 Ottawa, Ont.
 K1P 6A9

ATTN: Project 528 Area Elle

CC. W. Olsson

CERTIFICATE NO. 50090

INVOICE NO. 32467

RECEIVED Aug. 27/79

ANALYSED Sept. 7/79

SAMPLE NO.:	PPM	
PREFIX 40 U		
5542	7.0	P.P.P.P.P.P. rep rep rep
5543	2.5	
5544	4.5	
5545	8.5	
5546	4.5	
5547	4.0	
5548	3.0	P.P.P.P. rep rep rep
5549	1.0	
5592	2.0	
5593	1.5	
5594	3.0	P.P.P.P.P. rep
5595	5.0	
5596	3.5	
5597	3.0	
5598	5.0	
5599	6.0	P.P.P. rep
5782	8.2	
5783	7.5	
9001	7.0	P.P.P.P.P.P.P. rep
9002	5.0	
9003	6.0	
9004	5.0	
9005	4.5	
9006	2.5	
9007	2.5	
9008	8.0	P.P.P.P. rep
9009	4.0	
9010	4.5	
9011	2.5	
9012	7.5	P.P.P.P.P. rep
9013	3.5	
9014	0.5	
9015	2.5	
9016	3.5	
9017	1.5	P.P.P.P.P. rep
9018	3.5	
9019	4.5	
9020	2.5	
9021	4.5	
9022	3.0	



MEMBER
 CANADIAN TESTING
 ASSOCIATION

CERTIFIED BY:

Hart Biele



CHEMEX LABS LTD.

212 BROOKSBANK AVE.
 NORTH VANCOUVER, B.C.
 CANADA V7J 2C1
 TELEPHONE: ~~605-8848~~ 984-0221
 AREA CODE: 604
 TELEX: 043-52597

••ANALYTICAL CHEMISTS ••GEOCHEMISTS •• REGISTERED ASSAYERS

CERTIFICATE OF ANALYSIS

TO: Eldorado Nuclear Ltd.
 Ste. 400 - 255 Albert St.
 Ottawa, Ont.
 K1P 6A9

CERTIFICATE NO. 50375
 INVOICE NO. 32630
 RECEIVED Sept. 1/79
 ANALYSED Sept. 17/79

ATTN: Area Elle Soil CC. W. Olsson

SAMPLE NO. :	PPM
	U
40 - 5568	3.0
5569	5.5
5570	9.5
5571	6.5
5572	7.0
5678	> 400 ✓
5686	> 400 ✓
5688	223 ✓
5689	335 ✓
5690	> 400 ✓
5784	14.5
5785	13.0
5786	42
5787	76
5788	20.0
5789	16.5
5790	15.0
5791	19.5
5792	30
5794	23.0
5795	42
5796	10.5
5798	7.0
5799	11.5
5800	5.5
5801	117
5802	15.0
5803	56
5804	55
5805	>400
8416	2.5
8417	4.0
8418	3.0
8419	1.5
8420	5.5
8421	9.5
8422	4.0
8423	6.5
8424	5.0
40 - 8425	7.0

plotted

CP



MEMBER
 CANADIAN TESTING
 ASSOCIATION

CERTIFIED BY: Hart Bielle



CHEMEX LABS LTD.

212 BROOKSBANK AVE.
 NORTH VANCOUVER, B.C.
 CANADA V7J 2C1
 TELEPHONE: [REDACTED] 984-0221
 AREA CODE: 604
 TELEX: 043-52597

• ANALYTICAL CHEMISTS ••GEOCHEMISTS •• REGISTERED ASSAYERS

CERTIFICATE OF ANALYSIS

TO: Eldorado Nuclear Ltd.
 Ste. 400 - 255 Albert St.
 Ottawa, Ont.
 K1P 6A9

ATTN: Area Elle Soil

CC. W. Olsson

CERTIFICATE NO. 50376

INVOICE NO. 32630

RECEIVED Sept. 1/79

ANALYSED Sept. 17/79

SAMPLE NO. :	PPM	
	U	
40 - 8426	3.5	
8427	7.0	
8428	6.5	
8429	8.0	
8430	3.5	
8431	9.5	
8432	8.5	
8433	6.0	
8434	6.0	
8435	6.0	
8436	6.5	ref.
8437	8.0	
8438	9.0	
8439	11.5	
8440	8.5	
8441	5.0	p.
8442	8.0	
8443	8.0	
8444	4.0	
8445	11.5	
8446	3.0	ref.
8447	9.0	
8448	12.0	
8449	10.0	
8450	7.0	
8451	5.0	ref.
8452	7.0	
8453	3.5	
8454	2.0	
8455	3.5	
8707	2.0	ref.
8708	9.0	
8709	6.5	
8710	13.5	
8714	8.5	
8715	4.7	ref.
8716	7.5	
8717	4.5	
8718	1.5	
40 - 8720	> 400	



MEMBER
 CANADIAN TESTING
 ASSOCIATION

CERTIFIED BY: Hart Biddle



CHEMEX LABS LTD.

212 BROOKSBANK AVE.
 NORTH VANCOUVER, B.C.
 CANADA V7J 2C1
 TELEPHONE: ██████████ 984-0221
 AREA CODE: 604
 TELEX: 043-52597

• ANALYTICAL CHEMISTS • GEOCHEMISTS • REGISTERED ASSAYERS

CERTIFICATE OF ANALYSIS

TO: Eldorado Nuclear Ltd.
 Ste. 400 - 255 Albert St.
 Ottawa, Ont.
 K1P 6A9
 ATTN: Area Elle Soil

CC. W. Olsson

CERTIFICATE NO. 50377
 INVOICE NO. 32630
 RECEIVED Sept. 1/79
 ANALYSED Sept. 17/79

SAMPLE NO. :	PPM U	
40 - 9026	2.5	
9027	2.0	
9028	1.5	
9029	3.5	
9031	2.5	
9032	1.5	
9033	19.5	
9034	4.5	
9035	1.5	
9036	4.0	
9037	4.5	
9038	6.0	
9039	5.0	
9040	3.5	
9041	7.0	
9042	2.5	
9043	7.0	
9044	6.5	
9045	4.0	
9046	7.0	
9047	9.0	
9048	3.5	
9049	4.5	
9050	5.5	
9051	2.5	
9052	6.5	
9053	9.5	
9054	3.5	
9055	10.5	
9056	7.0	
9057	9.0	
9058	7.5	
9059	8.5	
9060	4.0	
9061	2.5	
9062	5.0	
9063	10.5	
9064	5.5	
9065	6.0	
40 - 9066	4.0	

plotted
CP



MEMBER
 CANADIAN TESTING
 ASSOCIATION

CERTIFIED BY: *Hart Biele*



CHEMEX LABS LTD.

212 BROOKSBANK AVE.
 NORTH VANCOUVER, B.C.
 CANADA V7J 2C1
 TELEPHONE: 985-0048 984-0221
 AREA CODE: 604
 TELEX: 043-52597

• ANALYTICAL CHEMISTS •• GEOCHEMISTS •• REGISTERED ASSAYERS

CERTIFICATE OF ANALYSIS

TO: Eldorado Nuclear Ltd.
 Ste. 400 - 255 Albert St.
 Ottawa, Ont.
 K1P 6A9
 ATTN: Area Elle Soil

CC. W. Olsson

CERTIFICATE NO. 50378

INVOICE NO. 32630

RECEIVED Sept. 1/79

ANALYSED Sept. 17/79

SAMPLE NO. :	PPM	
	U	
40 - 9067	6.5	<i>Plotted</i> <i>79</i>
9068	10.0	
9069	5.0	
9070	4.5	
9071	5.5	
9072	3.0	
9073	13.0	
9074	9.0	<i>P</i>
9075	4.0	
9076	7.0	
9077	4.0	
9078	5.0	
9079	10.5	
9080	10.5	
9081	14.5	
9082	8.0	
9083	7.0	
9084	3.0	
9085	9.0	
9086	6.5	
9087	4.5	
9088	7.5	
9089	4.5	
9090	8.5	
9091	5.5	
9092	2.0	
9093	5.5	
9094	4.5	
9095	6.5	
9096	5.0	
9097	4.5	
9098	6.5	
9099	7.5	
9100	7.0	
9101	14.5	
9102	8.5	
40 - 9103	13.0	



MEMBER
 CANADIAN TESTING
 ASSOCIATION

CERTIFIED BY: *Hart Bielle*



CHEMEX LABS LTD.

212 BROOKSBANK AVE.
 NORTH VANCOUVER, B.C.
 CANADA V7J 2C1
 TELEPHONE: 985-0618 984-0221
 AREA CODE: 604
 TELEX: 043-52597

• ANALYTICAL CHEMISTS • GEOCHEMISTS • REGISTERED ASSAYERS

CERTIFICATE OF ANALYSIS

TO: Eldorado Nuclear Ltd.
 Ste. 400 - 255 albert St.
 Ottawa, Ont.
 K1P 6A9
 ATTN: Area Elle Soil

CC. W. Olsson

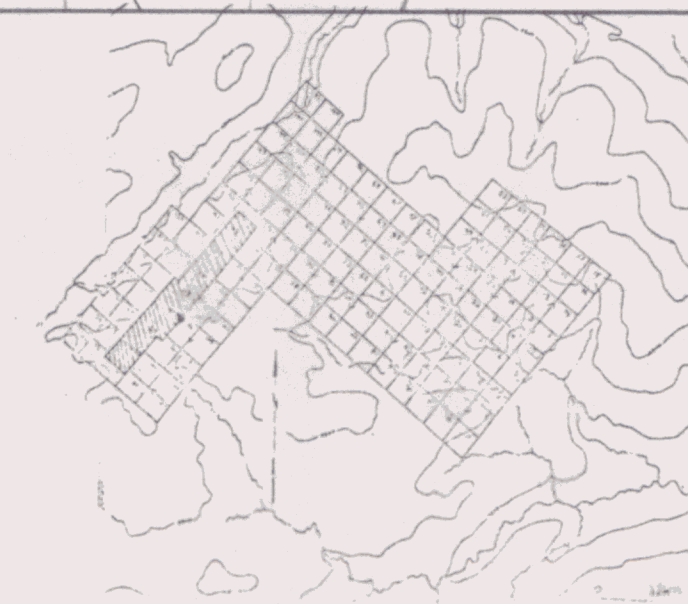
CERTIFICATE NO. 50375
 INVOICE NO. 32630
 RECEIVED Sept. 1/79
 ANALYSED Sept. 17/79

SAMPLE NO. :	PPM	
	U	
40 - 5568	3.0	}
5569	5.5	
5570	9.5	
5571	6.5	
5572	7.0	
5678	> 400	✓
5686	> 400	✓
5688	223	✓
5689	335	✓
5690	> 400	✓
5784	14.5	}
5785	13.0	
5786	42	
5787	76	
5788	20.0	
5789	16.5	
5790	15.0	
5791	19.5	
5792	30	
5794	23.0	
5795	42	
5796	10.5	
5798	7.0	
5799	11.5	
5800	5.5	
5801	117	}
5802	15.0	
5803	56	
5804	55	
5805	>400	
8416	2.5	}
8417	4.0	
8418	3.0	
8419	1.5	
8420	5.5	
8421	9.5	}
8422	4.0	
8423	6.5	
8424	5.0	
40 - 8425	7.0	



MEMBER
 CANADIAN TESTING
 ASSOCIATION

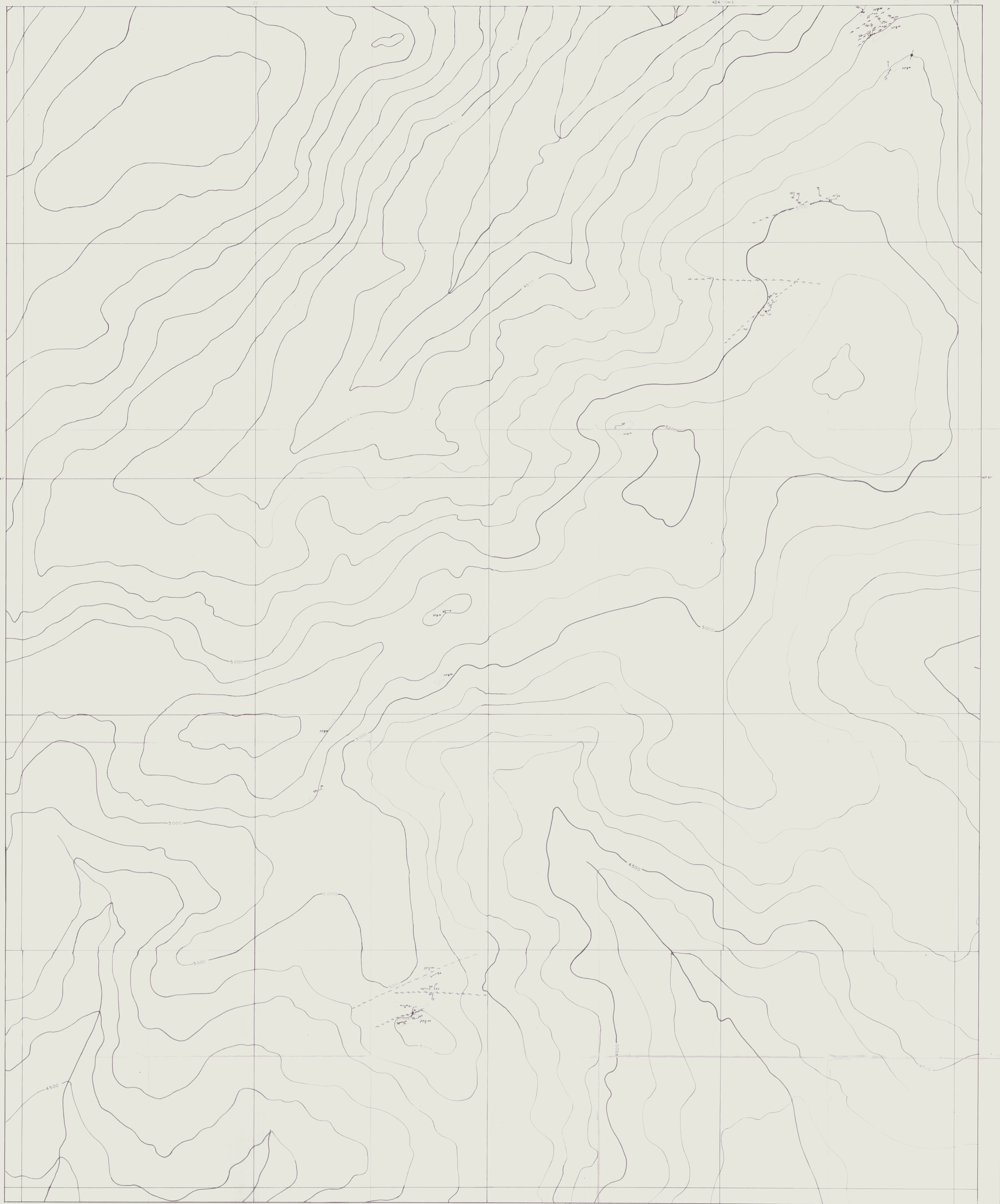
CERTIFIED BY: *Hart Bielle*



L	K	J	I
E	F	G	H
D	C	B	A

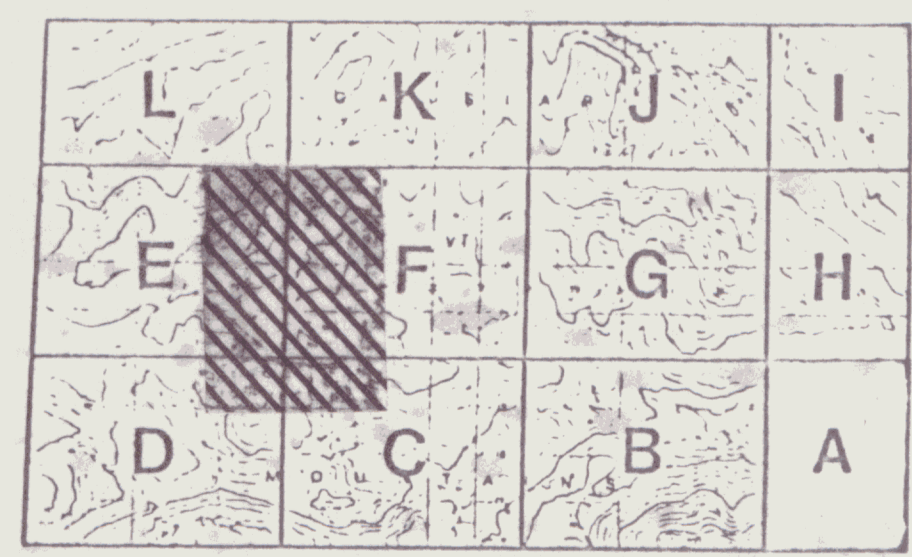
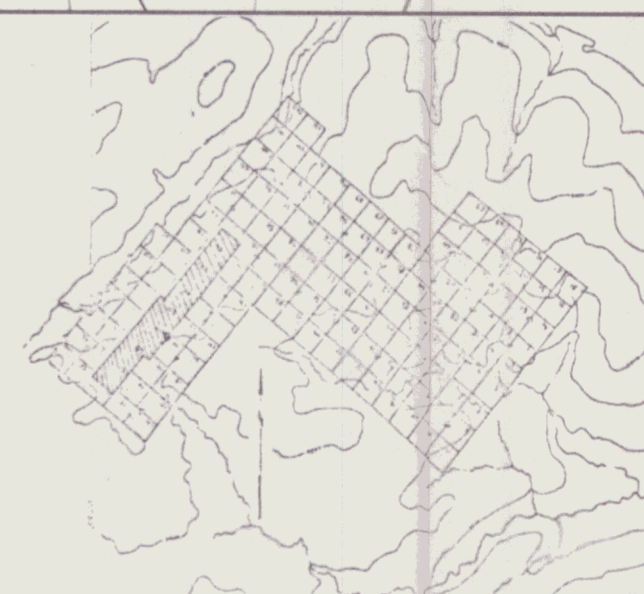
ELDORADO NUCLEAR LIMITED
 PROJECT 528
 ELLE CLAIMS
 SAMPLE LOCATION
 SILT ○ WATER X
 SOIL ●
 RCCK ■

0 50 100 150 200 250
 SCALE: 1:5,000

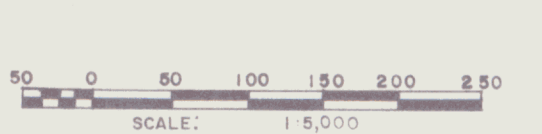


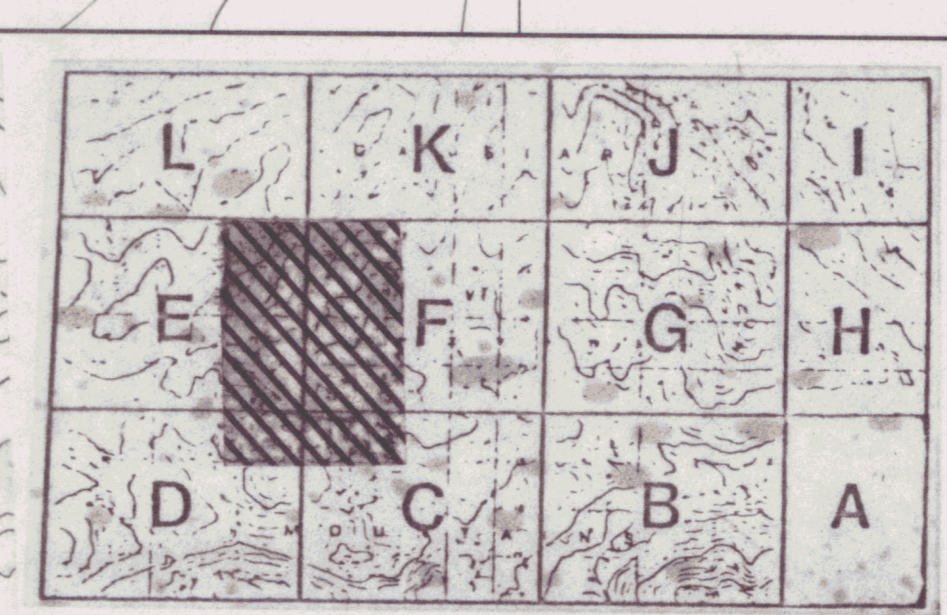
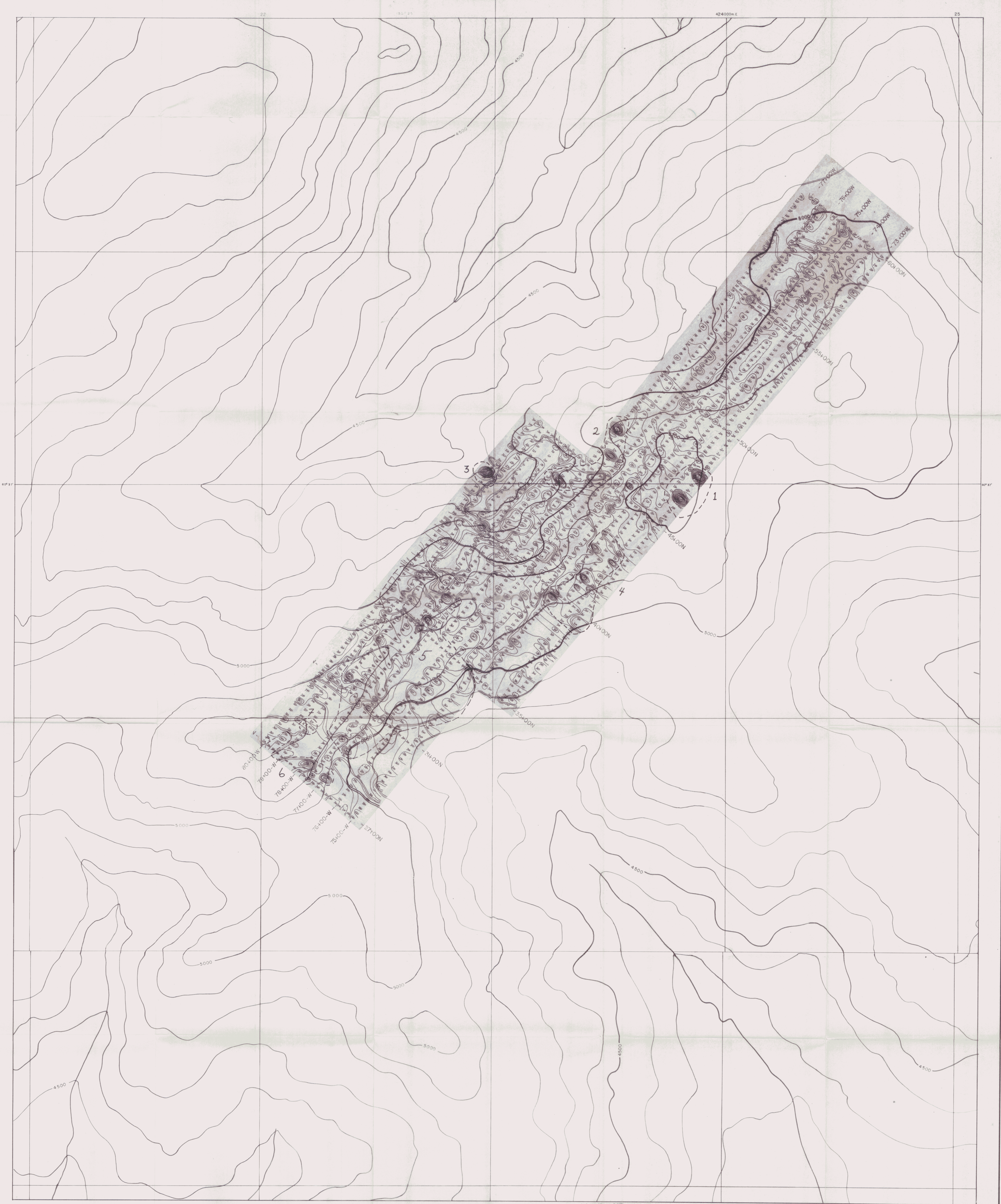
LEGEND

- Geological boundary (dashed, approximate, assumed)
- Bedding, top layer (horizontal, inclined, vertical, overturned, dip unknown)
- Foliation, schistosity (horizontal, inclined, vertical, dip unknown)
- Cleavage (horizontal, inclined, vertical, dip unknown)
- Joint (horizontal, inclined, vertical, dip unknown)
- Fracture (horizontal, inclined, vertical, dip unknown)
- Lineation (horizontal, inclined, vertical, dip unknown, plunge unknown, vertical)
- Lineament (dip and plunge unknown)
- Fault (dashed, approximate, assumed)
- Mineral occurrence (uranium etc.)
- Vein, fault
- Outcrop (uranium etc.)
- Rock sample - U in ppm in 40 right hand corner, cps below center, sample #
 ppm: porphyry quartz monzonite, ppq: porphyry granite
 qmz: quartz monzonite, bsch: biotite schist, gsk: granodiorite



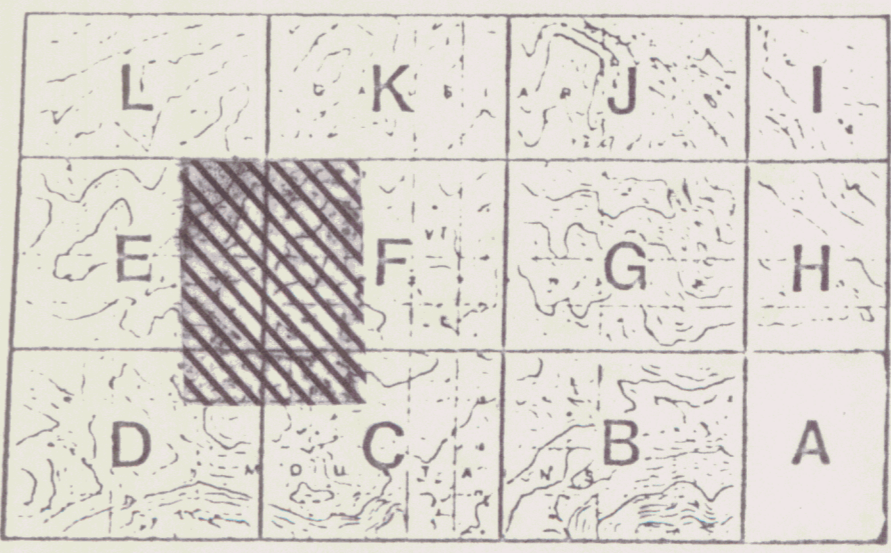
ELDORADO NUCLEAR LIMITED
 PROJECT 528
 ELLE CLAIMS
 GEOLOGY





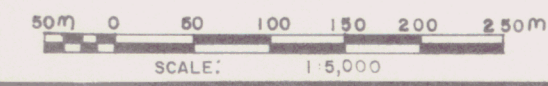
ELDORADO NUCLEAR LIMITED
PROJECT 528
ELLE CLAIMS
ELLE RADIOMETRIC GRID

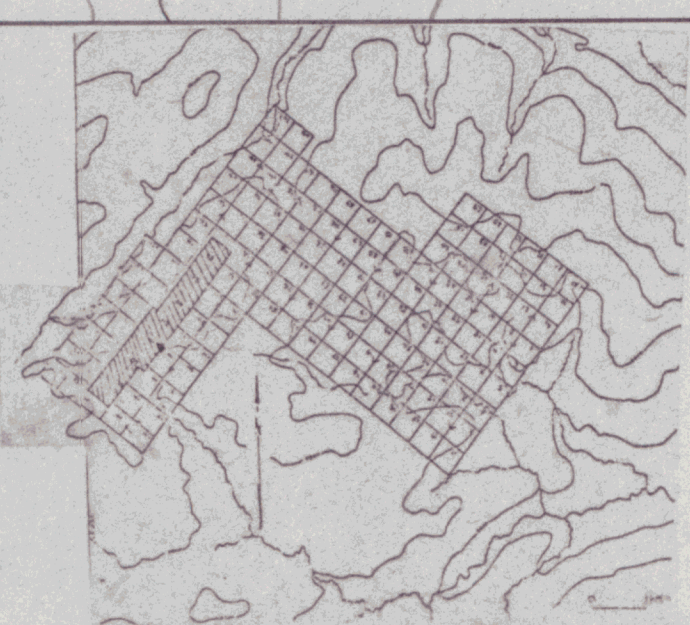
0 50 100 150 200 250
SCALE: 1:2,000



LEGEND
 R-2 ANOMALY
 SAMPLE

ELDORADO NUCLEAR LIMITED
 PROJECT 528
 ELLE CLAIMS
 ROCK GEOCHEMISTRY





L	K	J	I
E	F	G	H
D	C	B	A

ELDORADO NUCLEAR LIMITED
 PROJECT 528
 ELLE CLAIMS
 SOIL SILT AND WATER GEOCHEMISTRY
 SOIL ○
 SILT ○
 WATER ⊕
 50m 0 50 100 150 200 250m
 SCALE: 1:5000

5539	5538	5529	5528	5519	5518	1463	1464	1473	1477	1930	1935	1936	1945	1946	1955	1854	1855	1866	1867	1878	1885	1886	1895	1896	1985	50N		
5540	5539	5530	5527	5520	5519	1462	1465	1472	1475	1929	1937	1937	1944	1947	1954	1853	1856	1865	1868	1879	1884	1887	1894	1897	1984	40N		
5541	5536	5531	5526	5521	5516	1461	1466	1471	1476	1928	1933	1938	1943	1948	1953	1852	1859	1864	1869	1876	1883	1888	1893	1898	1983	30N		
5542	5535	5532	5525	5522	5515	1460	1467	1470	1477	1927	1932	1939	1942	1949	1952	1851	1858	1863	1870	1875	1882	1889	1892	1899	1982	20N		
5543	5534	5533	5524	5523	5514	1459	1468	1469	1478	1926	1931	1940	1941	1950	1951	1850	1859	1862	1871	1874	1881	1890	1891	1900 ^A	1981	10N		
5544	1489	1490	9001	9002	1433	1432	1431	1430	1429	1919	1920	1921	1922	1923	1925	1924	1880	7959	1860	1861	1872	1873	1990	1989	1988	1987	1986	00N
1479	1488	1491	1500	9003	9012	1458	1449	1448	1439	1434	1976	1975	1966	1965	1956	7960	7969	7970	7979	7980	5545	5547	9023	9022	9013	10S		
1480	1487	1492	1499	9004	9011	1457	1450	1447	1440	1435	1977	1974	1967	1964	1957	7961	7968	7971	7978	7981	5593	5599	9024	9021	9014	20S		
1481	1486	1493	1498	9005	9010	1456	1451	1446	1441	1436	1978	1973	1968	1963	1958	7962	7967	7972	7977	7982	5594	5598	5548	9020	9015	30S		
1482	1485	1494	1497	9006	9009	1455	1452	1445	1442	1437	1979	1972	1969	1962	1959	7963	7966	7973	7976	7983	5595	5597	5549	9019	9016	40S		
1483	1484	1495	1496	9007	9008	1454	1453	1444	1443	1438	1980	1971	1970	1961	1960	7964	7965	7974	7975	7984	5546	5596	5592	9018	9017	50S		

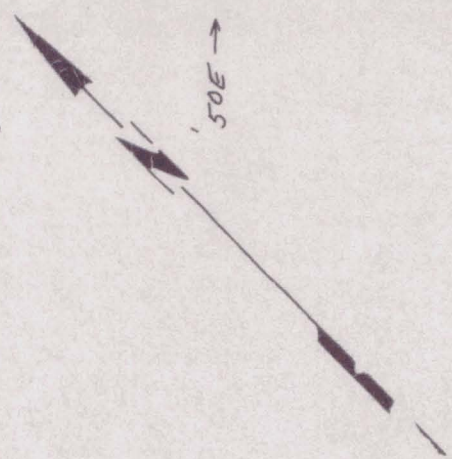
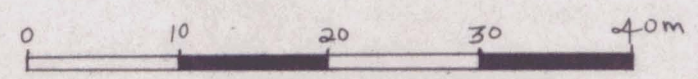
50W ↑

00E ↑

50E ↑

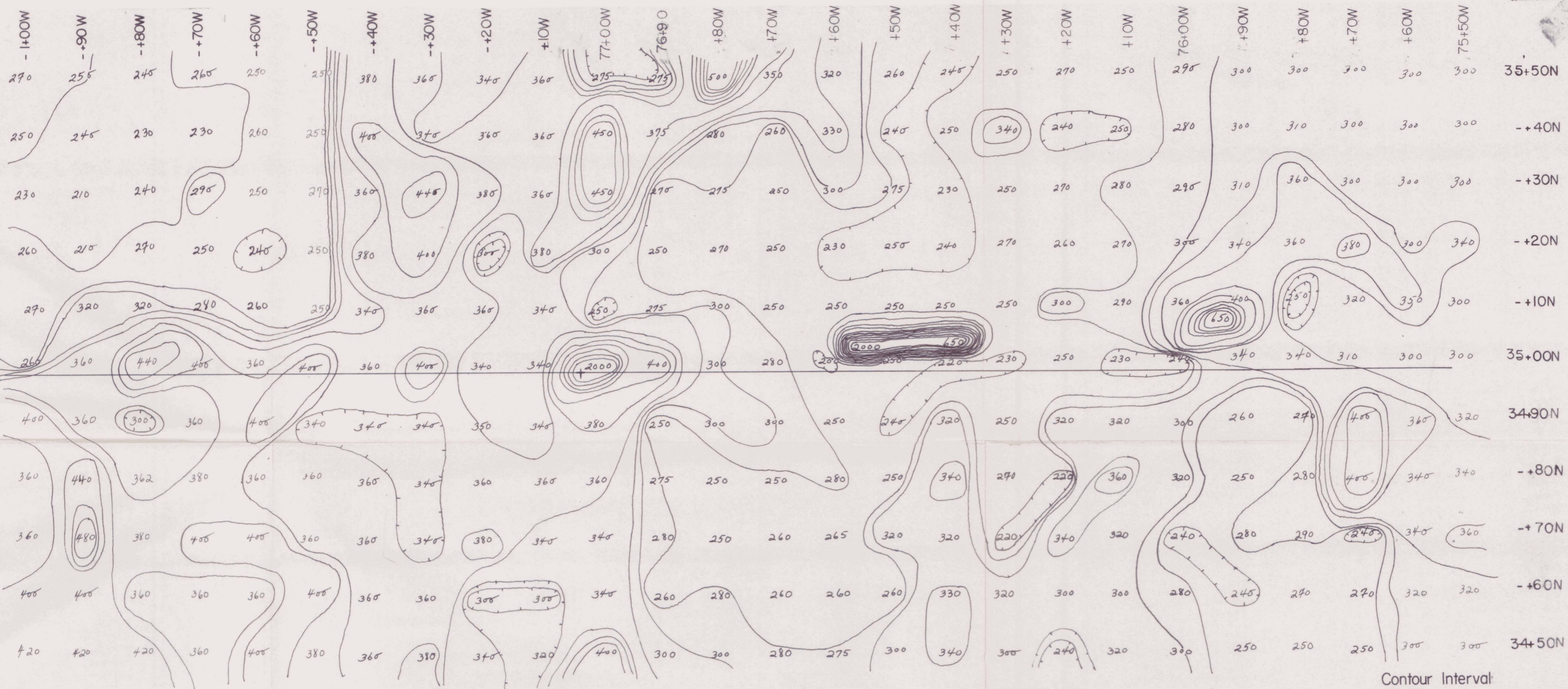
100E ↑

SCALE



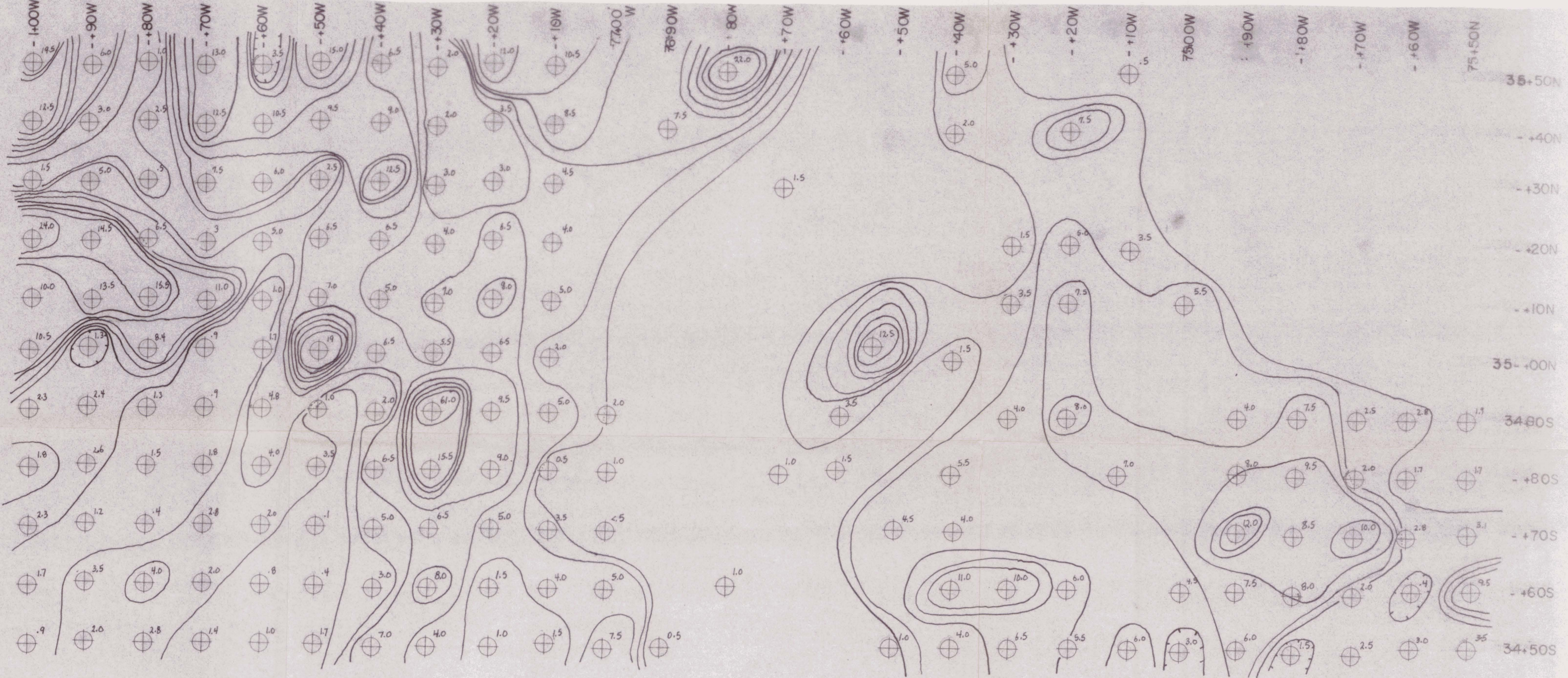
- LEGEND
- SOIL
 - ROCK

ELDORADO NUCLEAR LIMITED
 PROJECT 528
 ELLE MINI GRID I
 SAMPLE LOCATION



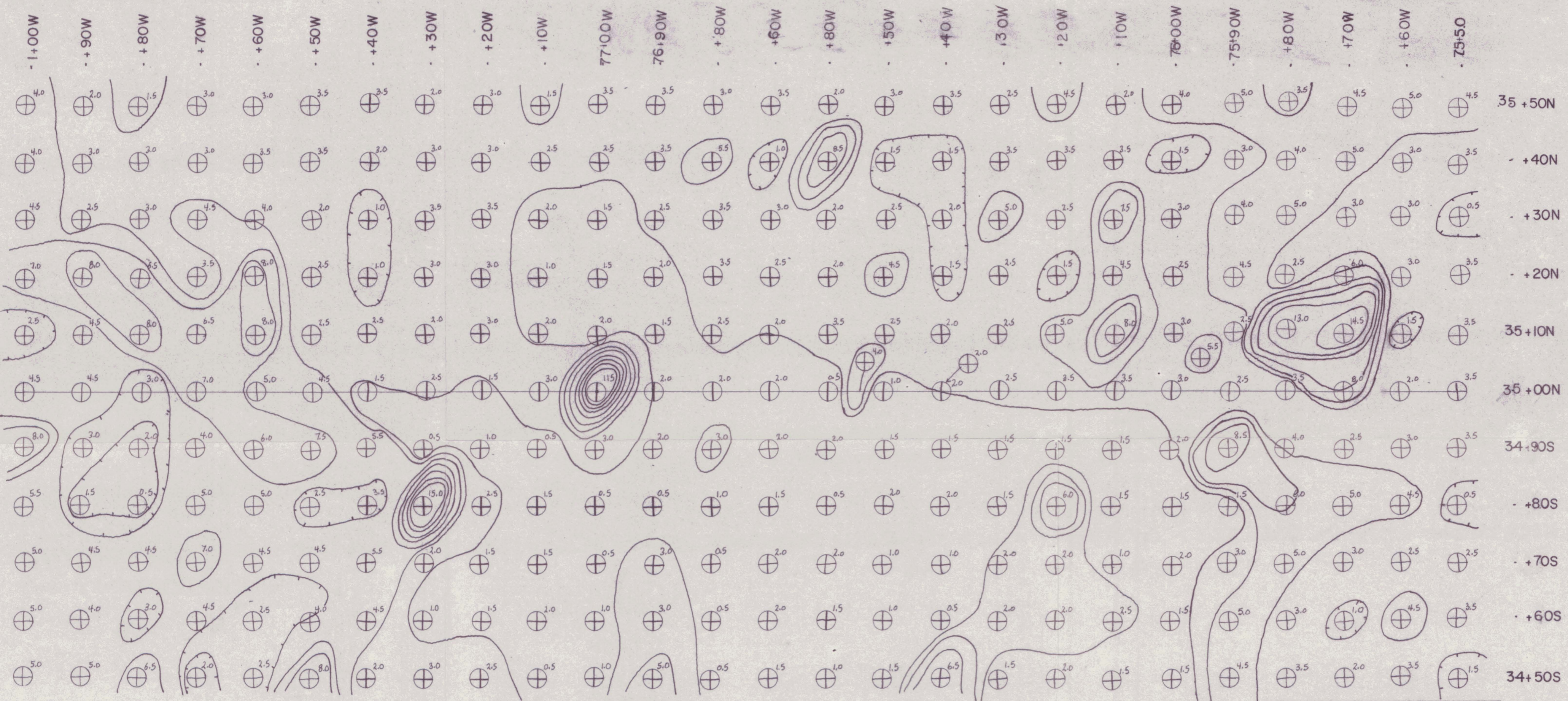
Contour Interval:
50PPM

ELDORADO NUCLEAR LIMITED
 PROJECT 528
 ELLE MINI-GRID #1
 RADIOMETRICS - CPS
 Scale 1:500 1979



ELDORADO NUCLEAR LIMITED
 PROJECT 528
 ELLE MINI-GRID #1
 ROCK GEOCHEMISTRY
 Scale 1:500 1979

CONTOUR INTERVAL
 2 PPM
 SAMPLE LOCATION
 ⊕ 2.5 PPM



Contour Interval
2PPM

SAMPLE LOCATION

3.5 PPM

ELDORADO NUCLEAR LIMITED

PROJECT 528

ELLE MINI-GRID #1

10 5 0 5 10 15 20 25m

SCALE 1:500

SOIL GEOCHEMISTRY

-79+90W

- 80W

- +70W

- +60W

- +50W

- +40W

- +30W

- +20W

- +10W

-79+00W

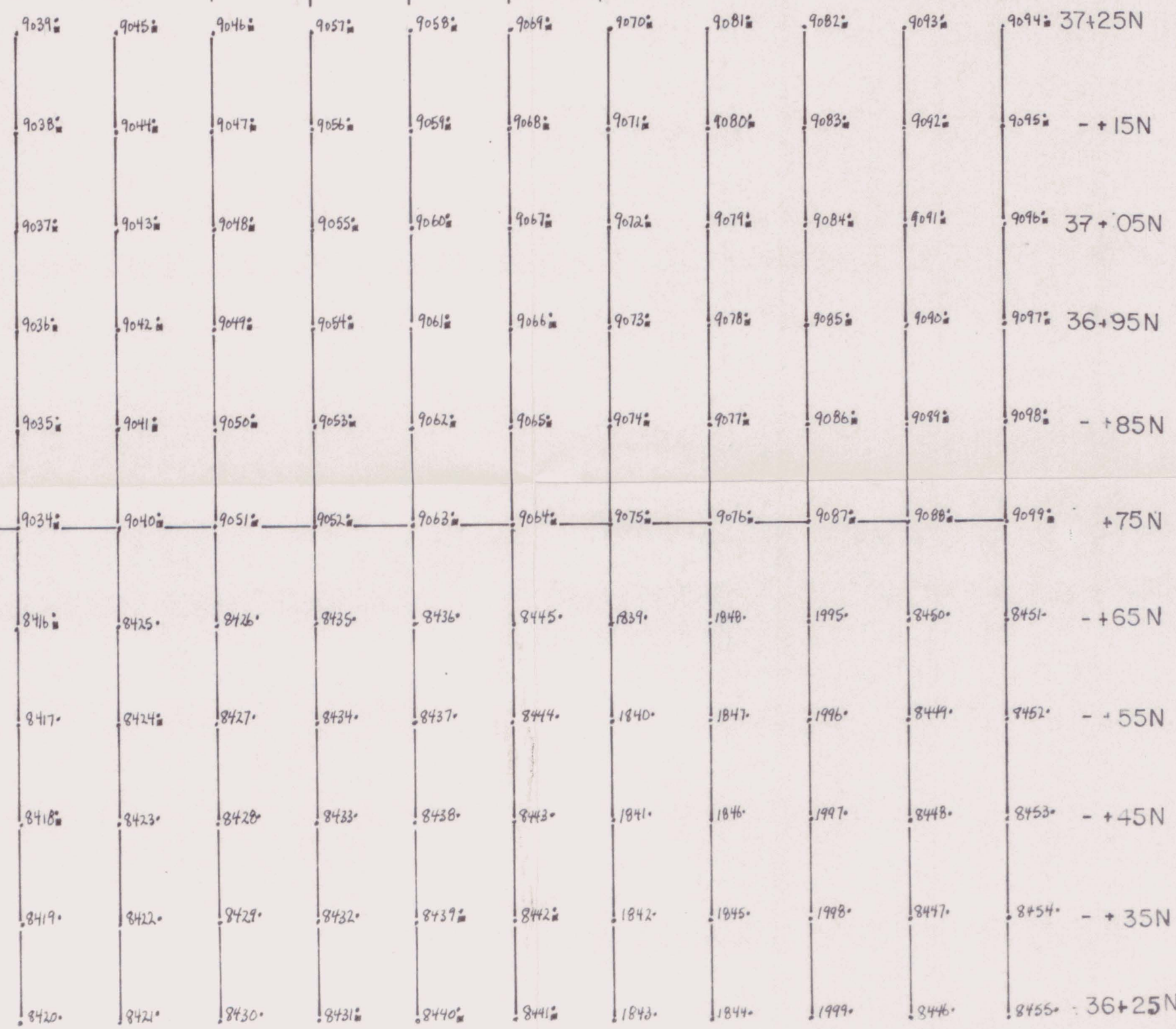
78+90E

+80E

+70E

+60E

-78+50E



LEGEND

- SOIL
- ROCK

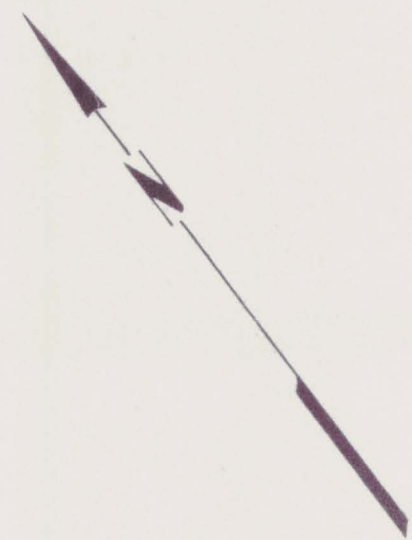
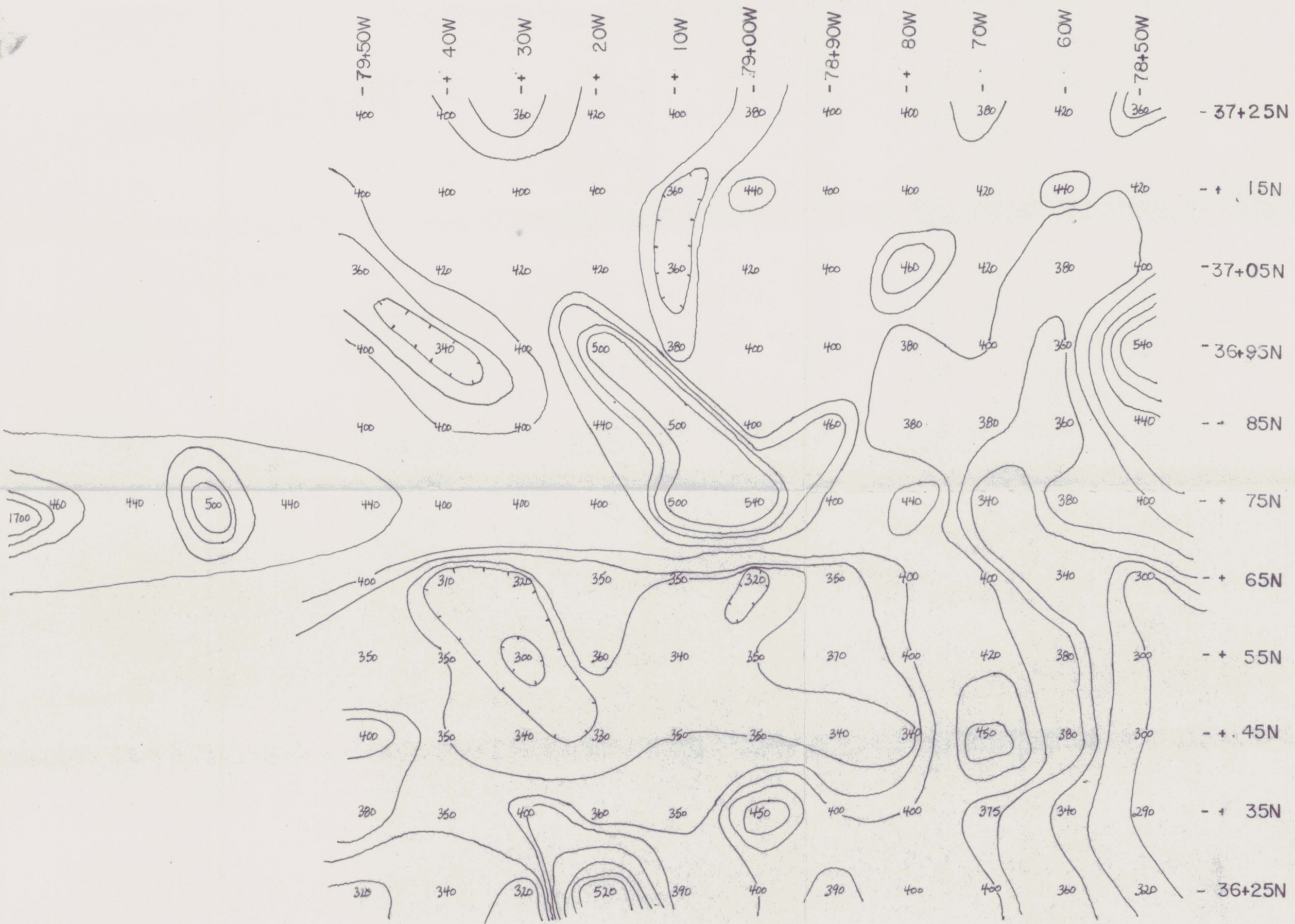
ELDORADO NUCLEAR LTD

PROJECT 528

ELLE MINI-GRID # 2

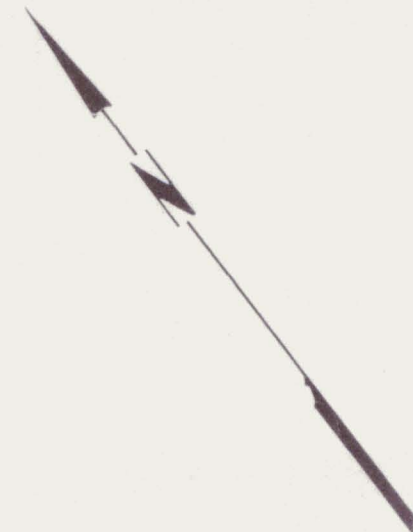
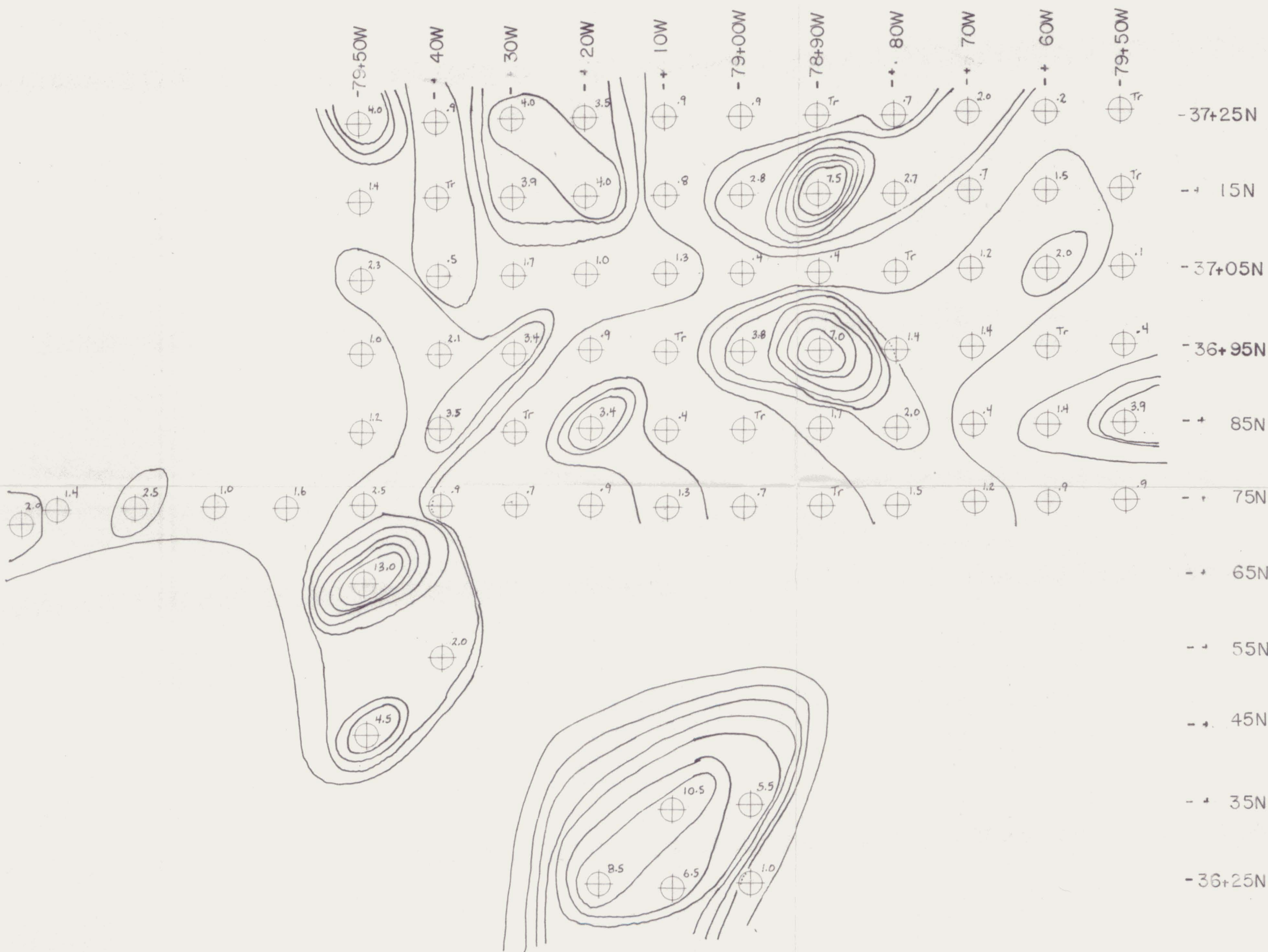
Sample Location

Scale 1:500



Contour Interval:
300CPS

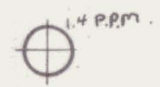
ELDORADO NUCLEAR LTD.
 PROJECT 528
 ELLE MINI-GRID #2
 Radiometrics (cps)
 10 5 0 5 10 15 20m
 SCALE 1:500 1979



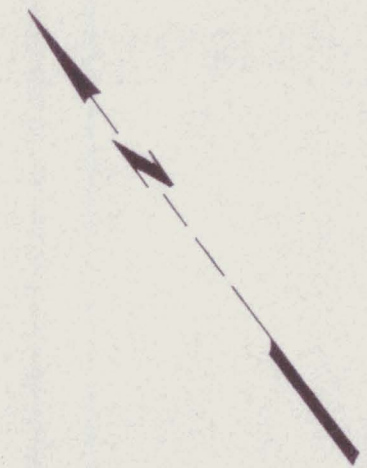
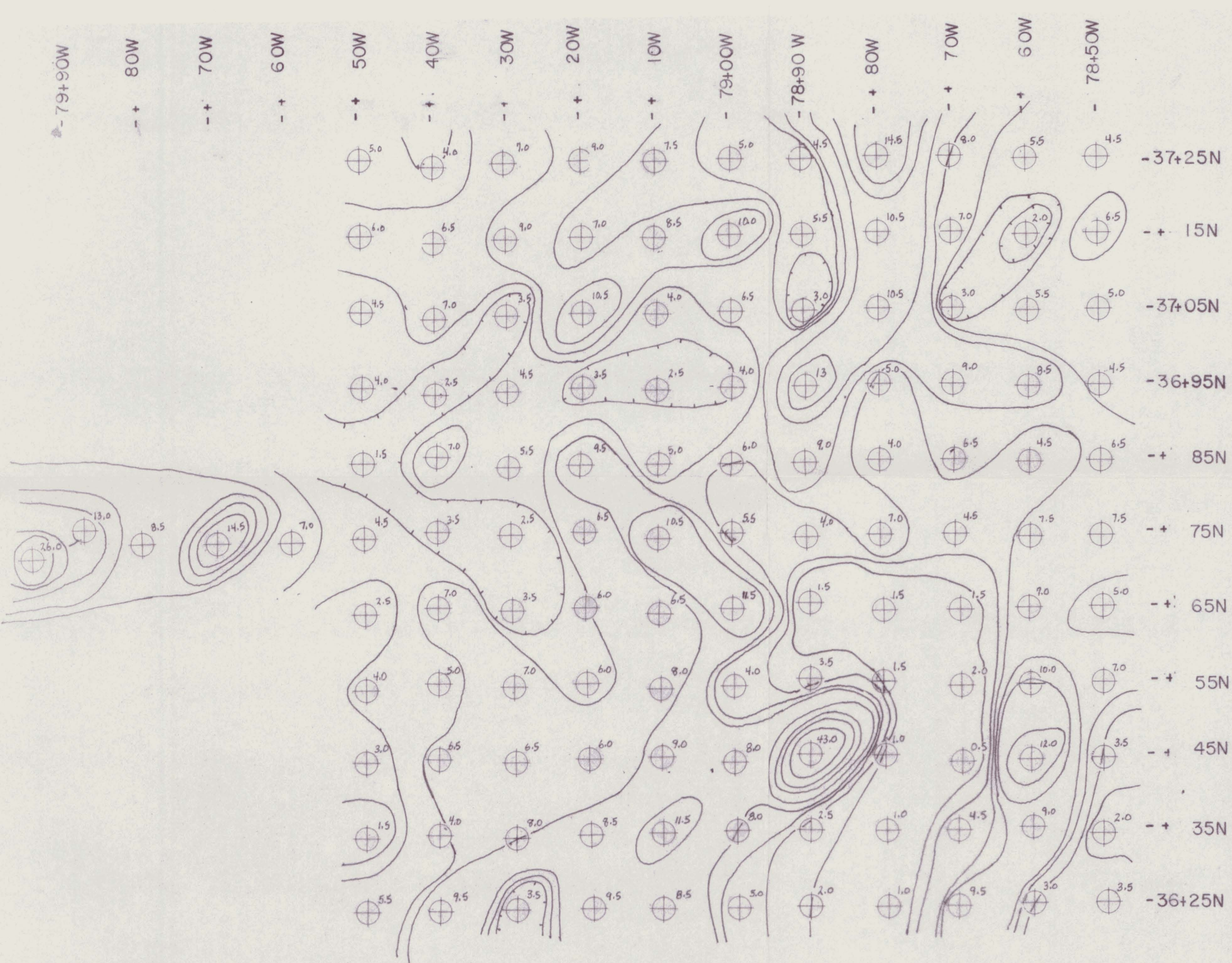
CONTOUR INTERVAL

1 PPM

SAMPLE LOCATION



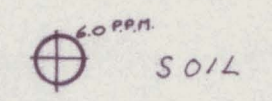
EL DORADO NUCLEAR LTD.
 PROJECT 528
 ELLE MINI-GRID #2
 Rock Geochemistry
 10 5 0 5 10 15 20 m
 SCALE 1:500 1979



Contour Interval

2PPM

SAMPLE LOCATION



ELDORADO NUCLEAR LTD.	
PROJECT 528	
ELLE MINI-GRID #2	
Soil Geochemistry	
Scale 1:500	1979