



CCH Resources Ltd.

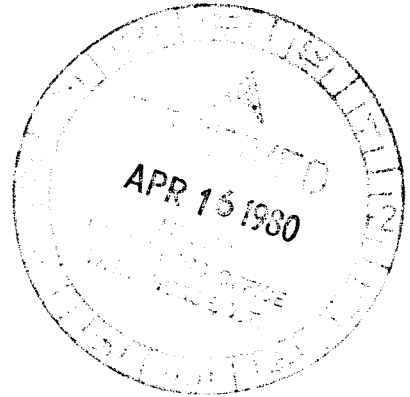
Assessment Report

Geological Mapping
Geochemical Mapping

Mozi claims 1-48

115- P- 14,15

63° 54' N 136° 58' W



Mayo Area

D. R. Kennedy

Yukon Territory

March 21, 1980.

090549

This report has been examined by the Geological Evaluation Unit and is recommended to the Commissioner to be considered as representation work in the amount of \$ 12,000.00

J A Morin

Resident Geologist or
P. Plant Mining Engineer

Considered as representation work under
Section 53 (4) Yukon Quartz Mining Act.

E. R. BAXTER
Supervising Mining Recorder

Commissioner of Yukon Territory

Contents

	<u>Page</u>
1. Introduction	1
2. Exploration History	2
3. General Geology	2
4. Geochemical Results	3
5. Geochemical Methods	4
6. Recommendations	5
7. Statement of Qualifications	6
8. Statement of Expenditures	7

Attached

Mozi claim sketch $\frac{1}{2}$ mile=1"

Map TY-73	Mozi Group	Reconnaissance Geology	1:10,000
Map TY-75	Mozi Group	Geochemistry W	1:10,000
Map TY-76	Mozi Group	Geochemistry Cu	1:10,000
Map TY-77	Mozi Group	Geochemistry Zn	1:10,000
Map TY-78	Mozi Group	Geochemistry Ag	1:10,000
Map TY-79	Mozi Group	Geochemistry Mo	1:10,000

Introduction

The Mozi claims are located just south-west of the Big Creek-Hobo Creek confluence. A claim sketch is attached.

The claims are owned by CCH Resources Limited of Toronto, Ontario.

The work outlined in this report was conducted intermittently from May 22 to September 6, 1979, as part of the Cortin Joint Venture's exploration program.

MOZI

Exploration History

A reconnaissance program carried out by CCH Resources Ltd. in 1978 found extremely high Mo anomalies with associated W, Zn, Ag values near the Big Creek-Hobo Creek confluence. These are the only significant Mo values found by the Cortin Joint Venture in the Mayo area to date.

The ground was staked for the Venture in 1979, as the MOZI Group, which totals 48 claims.

There is no record of claims being staked here before 1979, but some prospecting activity occurred in the past. Old flagging tape and a late? 1960's vintage coke can were found on the claims.

General Geology

Reconnaissance mapping, shown on Map Ty 73, gives us some idea of the area's make-up.

The bedded rocks are a monotonous series of shales, arkoses and conglomerates of the North American platform which generally dip between 10° and 30° to the north.

Intruded into these sediments are minor quartz-(biotite)-feldspar porphyry dykes which do not appear to have any preferred orientation. The dykes are not fractured or veined, and are devoid of sulphides except for occasional pyrite specks.

The most interesting geological feature on the property is the breccias. Outcrop is scarce, but at one locality in the south-west part of the group, a typical breccia is well-exposed on the ridge. Angular shale fragments are cemented by vuggy quartz veins and clots, and the frequent cross-cutting characteristics of the veins supports the concept of multiple brecciation. The voids, which are numerous, are coated with rusty ochre-colored material, and though highly sulphidic, do not contain recognisable sulphides.

The provenance of these breccias is in doubt. It has been suggested that they may be due to sediment de-watering with resultant collapse brecciation, or they may have been formed by violent hydrothermal activity generated by an intrusive at depth.

The extent of these breccias as defined by float material is impressive, and a loose correlation exists between areas of brecciation and high soil geochemical values.

1979 Geochemical Results

Geochemical soil sample lines were run either side of creeks, along ridge and claim lines, and around some contour lines. The results are shown on Maps Ty 75 to 79.

Very high Mo values, sometimes greater than 100 ppm, are broadly coincident with extremely strong Zn and Ag values. The pattern that emerges from the reconnaissance sampling is complex, but a general north-easterly trend and a strike in the order of 3 km is apparent. Associated Cu and W anomalies, though weaker, are further evidence of a multi-metal enrichment.

Organic overburden on the MOZI Group is frequently thick, and variation in overburden cover may be the reason for geochemical levels to be sometimes quite different on slopes facing one another.

Mineralisation

Apart from pyrite specks in the porphyry dykes, the only "discovery" to date is a small patch of azurite on a pebble in one of the creek beds.

Type samples of the shales, porphyry dykes and breccias were collected and analysed for Sn, W, Cu, Pb, Zn, Ag, Mo and U. A slight, though not always consistent, enrichment of Cu, Pb, Zn and Mo was found in the breccia samples. The picture would have been more enlightening had not one of the three shale samples ran above background Cu, Zn, Ag and Mo.

Geochemical Methods

All of the samples were collected directly below the organic layer, though occasionally the humus layer was in excess of 0.3 m and at these locations humus samples were inevitable.

The -80 mesh fractions was analysed for W, Cu, Zn, Ag and Mo, by Bondar-Clegg and Co. in their Whitehorse laboratories.

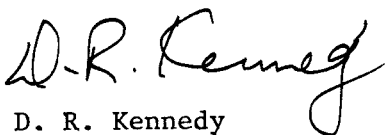
Tungsten was sintered with Na_2CO_3 followed by colourimetric analysis using zinc diphioI.

Copper, Zinc, Silver and Molybdenum were treated in the standard way with HNO_3 - NHCl and analysed by atomic absorption spectrophotometry.

Recommendations

- 1) The property should be mapped in detail.
- 2) Detailed geochemical surveys should be carried out over several of the anomalous areas.

Vancouver, B. C.
March 21, 1980


D. R. Kennedy
Project Geologist

Statement of Qualifications

The work on the Mozi claims was carried out under the supervision of A. Woodsend, Field Manager, North and D.R. Kennedy, Project Geologist.

Mr. Woodsend is Field Manager, North for CCH RESOURCES LTD. He holds a B.Sc. (Hons.) Degree in Geology from Southampton University, England, and has practiced his profession continuously for nine years in a variety of countries and geological environments.


Mr. Kennedy is a Project Geologist for CCH RESOURCES LTD. He holds a B.Sc. Degree from Acadia University, Wolfville, Nova Scotia, and has practiced his profession as a mineral exploration geologist for the past ten years. Mr. Kennedy is a member of the Geological Association of Canada and the Canadian Institute of Mining and Metallurgy.

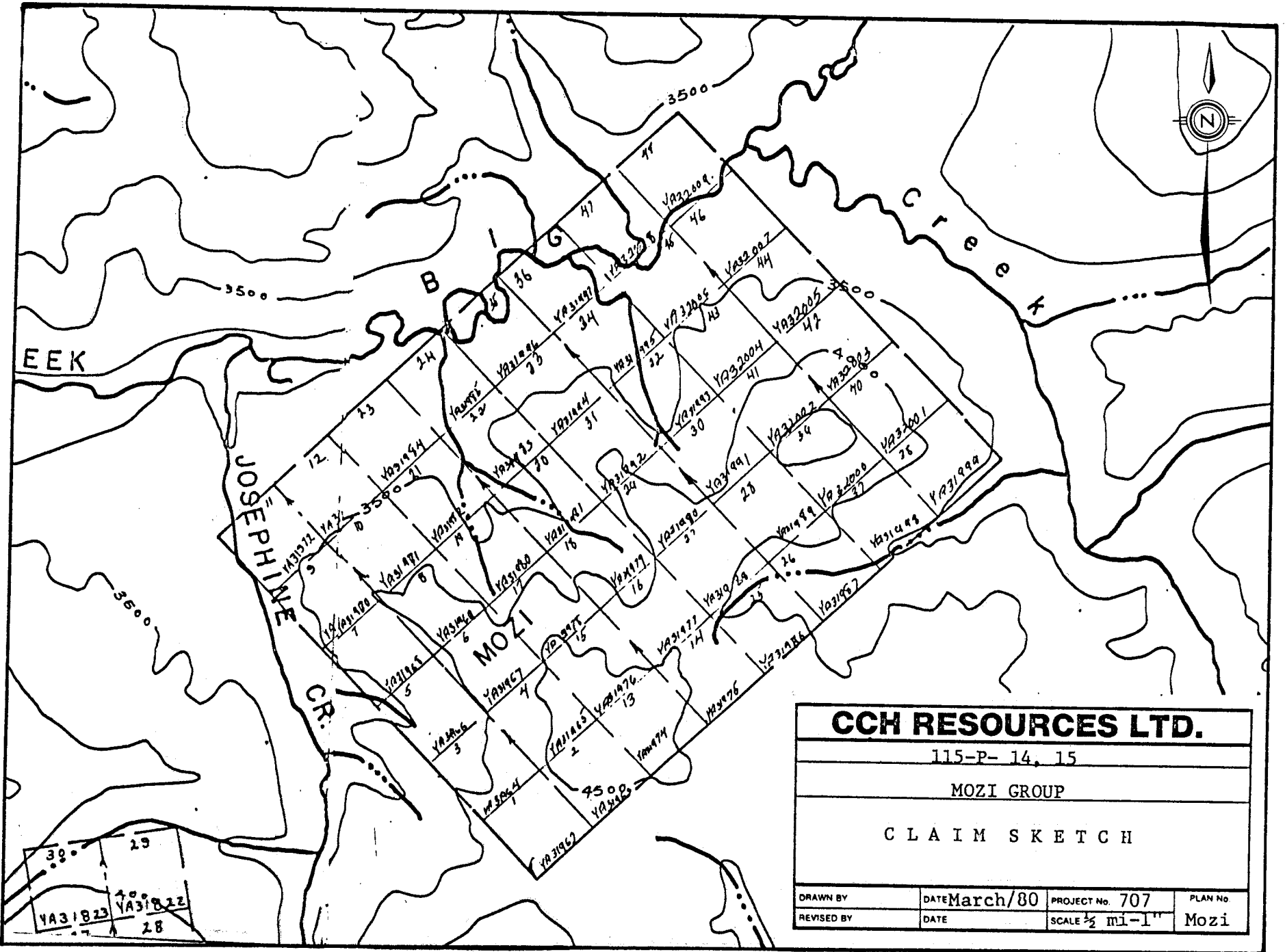
Mapping on the Mozi group was conducted by A. Woodsend. Soil sampling was carried out by H. Happyjack, Miqueløn, Quebec, S. Noble of Willowdale, Ont., A. Kanyen of Windsor, Ont. and P. vanKatwyk of Burlington, Ont.

Statement of Expenditures

846 samples analysed for W, Cu,Zn,Ag,Mo @ \$7.40 per sample	\$ 6,260.00
36 assistant days @ \$45.00/day	1,620.00
8 geologist days @ \$60.00/day	480.00
2 supervision days @ \$75.00/day	150.00
4 helicopter hours @ \$400.00/hr.	1,600.00
drafting and interpretation	1,500.00
food and supplies 44 man days @ \$12.00/day	<u>528.00</u>
	\$12,138.00

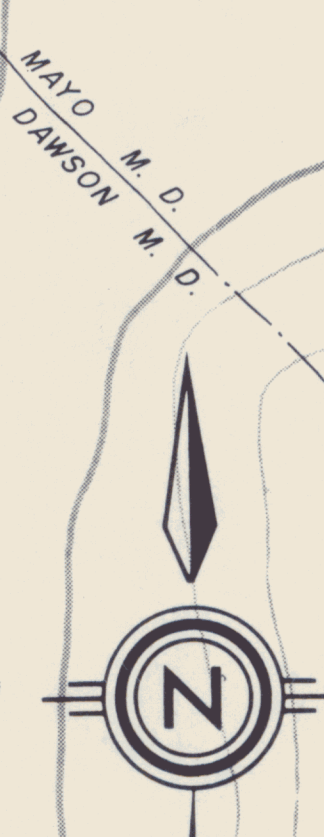
Vancouver, B. C.
March 21, 1980.


D. R. Kennedy
Project Geologist



CCH RESOURCES LTD.			
115-P- 14, 15			
MOZI GROUP			
CLAIM SKETCH			
DRAWN BY	DATE March/80	PROJECT No. 707	PLAN No.
REVISED BY	DATE	SCALE 1/2 mi-1"	Mozi

D.R. Carmel

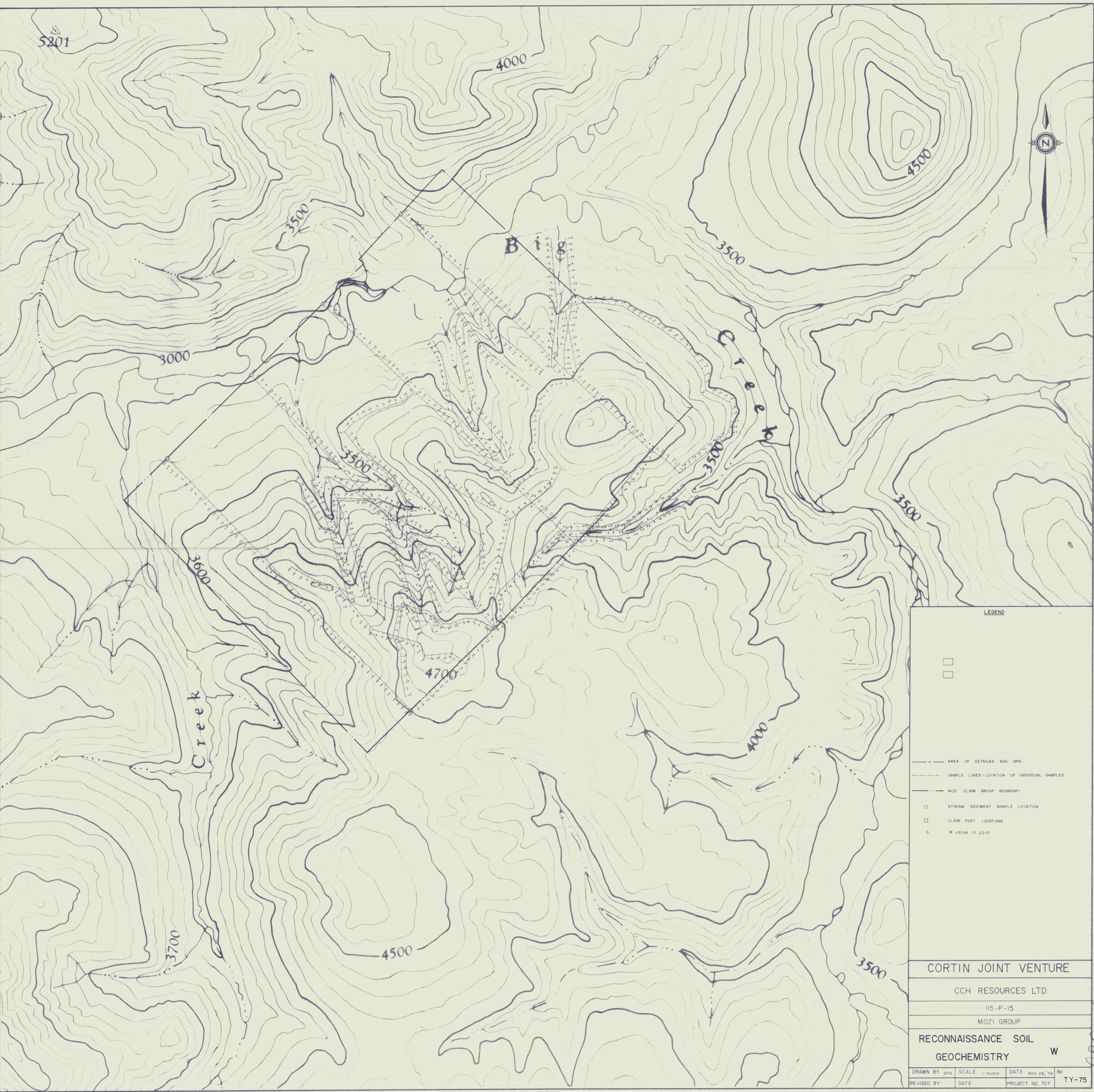


LEGEND

	QUARTZ VEIN
	QUARTZ FELDSPAR PORPHYRY AND QUARTZ BIOTITE FELDSPAR PORPHYRY
	BRECCIA-SLATE FRAGMENTS CEMENTED BY QUARTZ; VUGGY, SULPHIDIC, MULTIPHASE
	CONGLOMERATE
	ARKOSE
	SHALE
	MOZI GROUP CLAIM BOUNDARY
	OUTCROP BOUNDARY
	FLAT BOUNDARY
	BEDDING STRIKE AND DIP
	INTRUSIVE CONTACT STRIKE AND DIP
	MINOR FOLD AXIS TREND AND PLUNGE
	HAND SPECIMEN LOCATION
	CLAIM POSTS

CORTIN JOINT VENTURE	
CCH RESOURCES LTD.	
115-P-15	
MOZI GROUP	
RECONNAISSANCE GEOLOGY	
DRAWN BY: DFN	SCALE: 1:10,000
DATE: NOV. 23, 79	No.
REVISOR:	DATE:
PROJECT NO. 707	TY-73

D.R. Lemay



LEGEND

-
-
- AREA OF DETAILED SOIL GRID
- SAMPLE LINES / LOCATION OF INDIVIDUAL SAMPLES
- MOZI CLAIM GROUP BOUNDARY
- STREAM SEDIMENT SAMPLE LOCATION
- CLAIM POST LOCATIONS
- 6 W value in ppm

CORTIN JOINT VENTURE

CCH RESOURCES LTD.

115-P-15

MOZI GROUP

RECONNAISSANCE SOIL

GEOCHEMISTRY

W

DRAWN BY: DFN	SCALE: 1:10,000	DATE: NOV 28, 79	No
REVISED BY:	DATE:	PROJECT NO. 707	TY-75

D.R. Connel



LEGEND

Cu

- ≥ 500 ppm
- $> 100 < 500$ ppm
- $> 50 \leq 100$ ppm
- ≤ 50 ppm

- AREA OF DETAILED SOIL GRID
- SAMPLE LINES / LOCATION OF INDIVIDUAL SAMPLES
- MOZI CLAIM GROUP BOUNDARY
- STREAM SEDIMENT SAMPLE LOCATION
- CLAIM POST LOCATIONS
- 37 Cu Value in ppm

CORTIN JOINT VENTURE			
CCH RESOURCES LTD.			
115-P-15			
MOZI GROUP			
RECONNAISSANCE SOIL			Cu
GEOCHEMISTRY			
DRAWN BY: DFN	SCALE: 1:10,000	DATE: NOV 28, '79	No
REVISED BY:	DATE	PROJECT NO 707	TY-76

D.R. Gandy



LEGEND

Zn

- > 1000 ppm
- > 300 ≤ 1000 ppm
- ≤ 300 ppm

- AREA OF DETAILED SOIL GRID
- SAMPLE LINES / LOCATION OF INDIVIDUAL SAMPLES
- MOZI CLAIM GROUP BOUNDARY
- STREAM SEDIMENT SAMPLE LOCATION
- CLAIM POST LOCATIONS
- 20 Zn value in ppm

CORTIN JOINT VENTURE

CCH RESOURCES LTD

115-P-15

MOZI GROUP

RECONNAISSANCE SOIL
GEOCHEMISTRY

Zn

DRAWN BY: DFN	SCALE: 1:10,000	DATE: NOV 28, 79	No
REVISED BY:	DATE:	PROJECT NO: 707	TY-77

D.K. Lewis



LEGEND

Ag

- > 10 ppm
- > 3 ≤ 10 ppm
- > 1 ≤ 3 ppm
- ≤ 1 ppm

- AREA OF DETAILED SOIL GRID
- SAMPLE LINES / LOCATION OF INDIVIDUAL SAMPLES
- MOZI CLAIM GROUP BOUNDARY
- STREAM SEDIMENT SAMPLE LOCATION
- CLAIM POST LOCATIONS
- 02 Ag value in ppm

CORTIN JOINT VENTURE

CCH RESOURCES LTD.

115-P-15

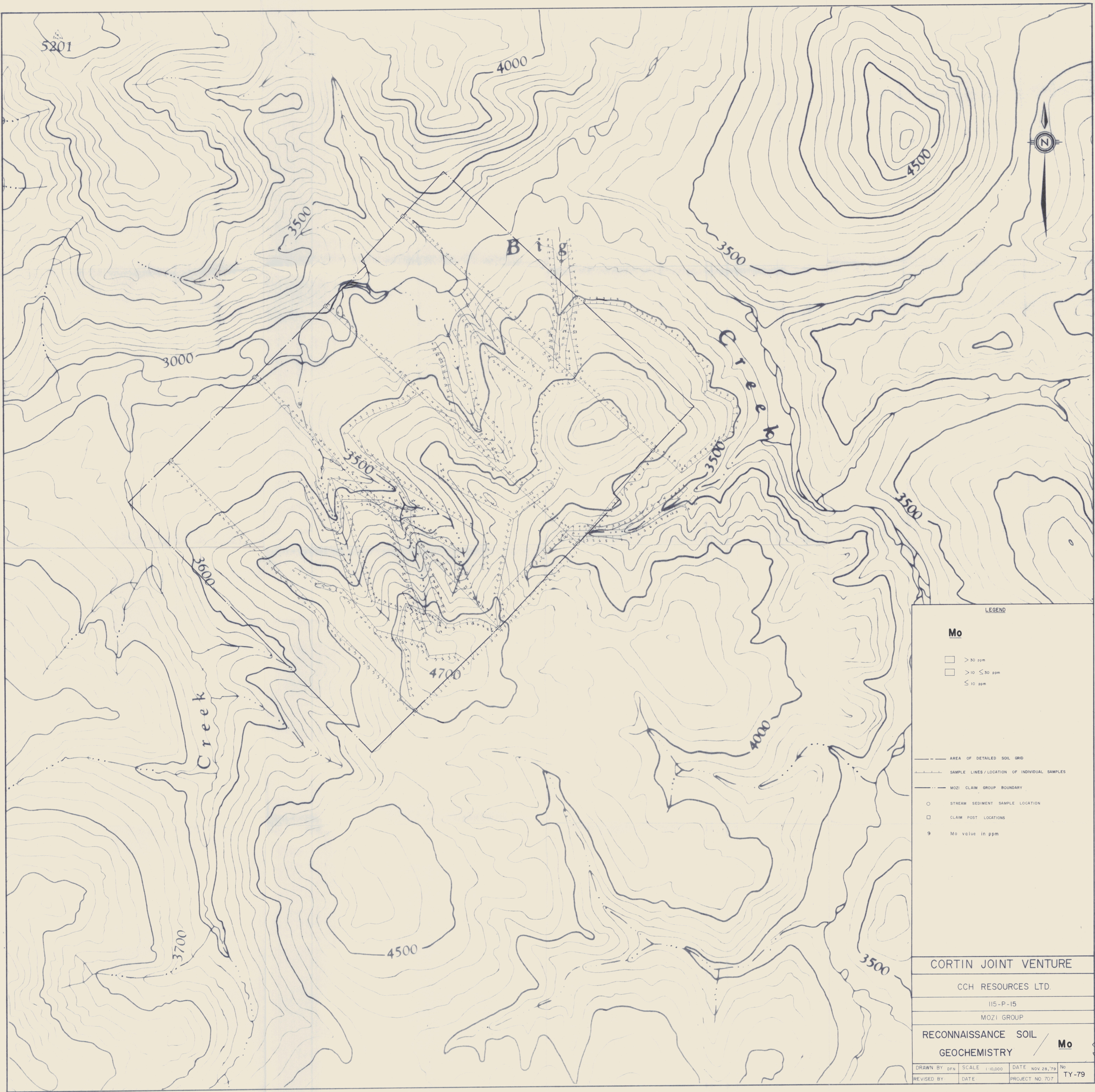
MOZI GROUP

RECONNAISSANCE SOIL
GEOCHEMISTRY

Ag

DRAWN BY: OFN	SCALE: 1:10,000	DATE: NOV 28, 79	No
REVISED BY:	DATE:	PROJECT NO. 707	TY-78

DR. Tames



LEGEND

- Mo**
- > 30 ppm
 - > 10 ≤ 30 ppm
 - ≤ 10 ppm

- AREA OF DETAILED SOIL GRID
- SAMPLE LINES / LOCATION OF INDIVIDUAL SAMPLES
- MOZI CLAIM GROUP BOUNDARY
- STREAM SEDIMENT SAMPLE LOCATION
- CLAIM POST LOCATIONS
- 9 Mo value in ppm

CORTIN JOINT VENTURE			
CCH RESOURCES LTD.			
115-P-15			
MOZI GROUP			
RECONNAISSANCE SOIL			Mo
GEOCHEMISTRY			
DRAWN BY	DFN	SCALE 1:10,000	DATE NOV 28, 79
REVISOR BY	DATE	PROJECT NO. 707	No. TY-79

DR. [Signature]