

GEOCHEMICAL ASSESSMENT REPORT

ROSE 1-40 MINERAL CLAIMS

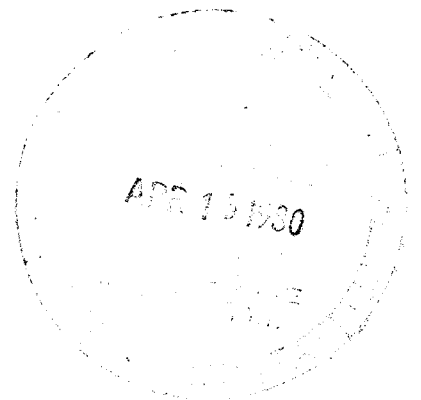
95 E 6

61°26'

127°23'



Noranda Exploration Company Limited
(No Personal Liability)



G. Macdonald

December 1979

090539

This report has been examined by the Geological Evaluation Unit and is recommended to the Commissioner to be considered as representation work in the amount of

4,000.00

J. A. Morin

Geologist or
Mining Engineer

Considered as representation work under
Section 5.1 (a), Yukon Quartz Mining Act.

B. R. BAXTER
Supervising Mining Recorder

Commissioner of Yukon Territory

TABLE OF CONTENTS

INTRODUCTION

Figure 1 - Location Map

Figure 2 - Claim Map

GEOCHEMICAL SURVEY

CONCLUSIONS AND RECOMMENDATIONS

APPENDICES: - Statement of Qualifications

- Statement of Costs

MAPS IN POCKET: - Geochemical Results (Cu, Pb, Zn)

- Geochemical Results (Mo, Wo, Sn)

GEOCHEMICAL ASSESSMENT REPORT

on

ROSE 1-40 MINERAL CLAIMS

INTRODUCTION

The claims referred to in this report are registered in the name of Noranda Exploration Company Limited (No Personal Liability). The group consists of 40 ROSE claims (YA26807-YA26846).

The property is located five miles southwest of Lucky Lake on the Coal River, 105 air miles northeast of Watson Lake, Yukon Territory. Access in 1979 was by helicopter from Cantung, Northwest Territories.

The property was grid soil sampled by Consolidated Ventures of Whitehorse, Yukon, between August 25-30, 1979 under contract to Noranda.

GEOCHEMICAL RECONNAISSANCE

All soils were analyzed for copper, lead, zinc, molybdenum and tungsten in the Whitehorse assay office laboratory.

Sampling Method

Samples were obtained by digging holes with a maddock to a depth, if feasible, where the visible B horizon or sub-outcrop was encountered. The B horizon was sampled whenever possible. The samples were placed in "Hi Wet Strength Kraft 3½ x 6-1/8" Open End" envelopes and the grid station was marked on each envelope with indelible felt pen. Survey control was provided by chained picket lines at 100-metre centres with 100-metre sample stations.

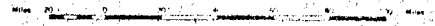


CANADA
DEPARTMENT OF
MINES AND TECHNICAL SURVEYS
SURVEYS AND MAPPING BRANCH

YUKON TERRITORY

SCALE 1:444,444

1 inch equals approximately 73 miles



Road
Railway
Territorial capital

POPULATED PLACES

500 to 2,000
Under 500

Division
Centres

Lambert Conformal Conic Projection with Standard Parallels at 49°N and 57°N

Reproduced from the 1:2,000,000 map of Canada by the
Surveys and Mapping Branch, Ottawa, 1963

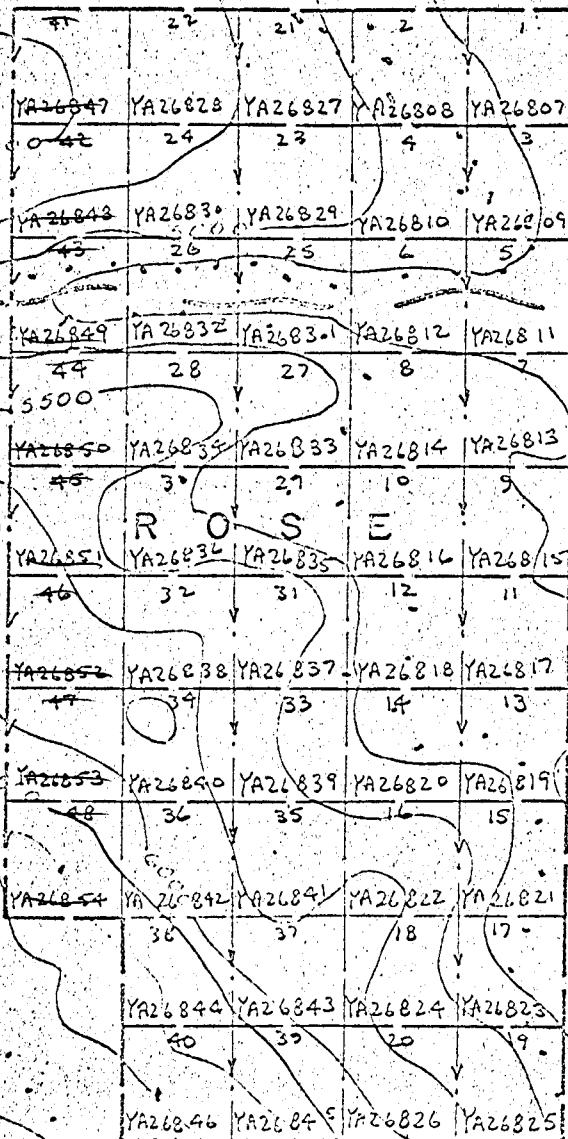


FIG 2
 LOCATION MAP
 1" = 1/2 MILE
 95 E

Laboratory Determination Method

The samples are first placed in a drying cabinet for a period of 24 to 48 hours; the sample material is then screened and sifted to obtain a -80 mesh fraction. The determination procedure for total copper, lead, zinc and molybdenum is as follows:

0.200 grams of the -80 mesh material is digested in 2 ml of HClO_4 and 0.5 ml of HNO_3 for approximately 4 hours. Following digestion, each sample is diluted to 5 ml with de-mineralized H_2O . A varian Techtron model AA-5 Atomic Absorption Spectrophotometer was used to determine the parts per million copper, lead, zinc and molybdenum content in each sample.

The theory of Atomic Absorption Spectrophotometer is fully described in the literature and will not be elaborated upon in this report.

Results are presented in the drawings in the pocket of this report.

DISCUSSION OF RESULTS

(a) Copper-Lead-Zinc:

A coincident copper-lead-zinc anomaly of generally moderate intensity is present at the south end of the grid from approximately 50N to 56N from 46W to 52W. The source of these anomalies is at present not known.

(b) W-Mo-Sn:

A moderately strong tungsten anomaly extends from 57N to at least 71N. This anomaly trends along the western margin of the grid and is from 200 - 500 metres in width. No anomalous values for molybdenum or tin were detected.

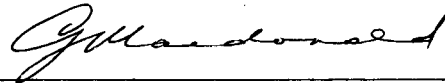
The tungsten soil anomaly reflects the contact alteration zone of carbonate rocks and granodiorite. Extensive skarn development in this region contains scheelite.

CONCLUSIONS AND RECOMMENDATIONS

The soil geochemistry programme has outlined an extensive tungsten anomaly and a significant lead-zinc-copper anomaly. The tungsten anomaly indicates that scheelite may be widespread in an extensive skarn horizon developed along the contact between favourable carbonate rocks and granodiorite.

Further work is warranted on the ROSE claims and the economic possibilities should be further evaluated with a magnetometer geophysical survey, detailed geological mapping and sampling, and trenching or diamond drilling.

Submitted by:



G. Macdonald,
Geologist.

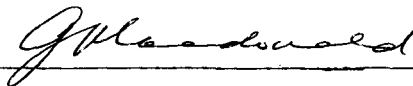
A P P E N D I C E S



STATEMENT OF QUALIFICATIONS

I, GLEN MACDONALD, of the City of Whitehorse in the Yukon Territory, DO
HEREBY CERTIFY that:

1. I have been employed as a Geologist by Noranda Exploration Company Limited (No Personal Liability) since May 1976.
2. I am a graduate of the University of British Columbia, with a Bachelor of Science degree in Geology.
3. I am a member of the Canadian Institute of Mining and Metallurgy.



G. Macdonald, Geologist,
Noranda Exploration Company Limited
(N.P.L.)

NORANDA EXPLORATION COMPANY, LIMITED

STATEMENT OF COST

PROJECT Rose Claims
TYPE OF REPORT Geochem

DATE January 1980

a) Wages:

No. of Days
Rate per Day \$
Dates: from to
Total Wages x \$

b) Food and Accomodation:

No of days
Rate per day \$
Dates: from to
Total Cost x \$

c) Transportation:

No of days
Rate per day \$
Dates: from to
Total Cost X \$

d) Instrument Rental:

Type of Instrument
No of days
Rate per day \$
Dates: from to
Total Cost X \$

Type of Instrument
No of days
Bate per day \$
Dates: from to
Total Cost X \$

f) Analysis (See attached schedule)		<u>1,097.10</u>
g) Cost of preparation of Report		
Author	150.00	
Drafting	75.00	
Typing	75.00	<u>300.00</u>
h) Other:		
Geochem	372.00	
Line Prep.	2,425.00	
C.P. Air	19.50	
Supervision: G.E. Dirom P. Eng.	200.00	
Terr Air	1,237.35	
		<u>4,253.85</u>
Total Cost		<u><u>5,650.95</u></u>

e) Unit costs for Geochem		
No of days		
No of units	184 Samples	
Unit costs	\$12.8113 / Sample	
Total Cost	\$12.8113 × 184	2,357.28

Unit Cost of Line Preparation

No. of Units	19.4 km	
Unit Cost	\$164.622	
Total Cost	\$164.622 X 19.4	<u>3,193.67</u>

The Exploration Cost of \$5,550.95 is certified correct: \$5,550.95


W.W. Young
Accountant

NORANDA EXPLORATION COMPANY, LIMITED
(WESTERN DIVISION)

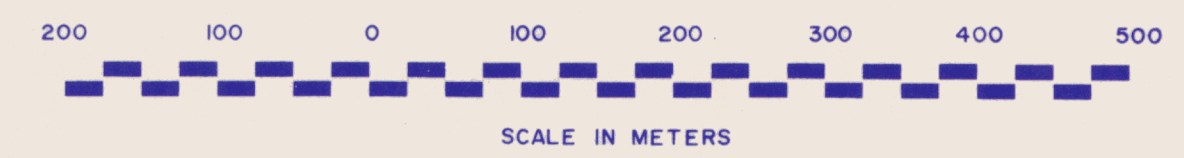
DETAILS OF ANALYSES COSTS

PROJECT:

<u>ELEMENT</u>	<u>NO. OF DETERMINATIONS</u>	<u>COST PER DETERMINATION</u>	<u>TOTAL</u>
Cu	184	6.00	1,104.00
Pb	"		
Zn	"		
Mo	"		
W	"		
Sn	46	2.50	115.00
Sub-total			1,219.00
Less Discount 10%			121.90
			<u>1,092.10</u>



	57 W	55 W	53 W	51 W	49 W	47 W			
73 N	4 16	4 16	4 16	8 16	8 16	4 16	12 24	8 16	8 16
	12 56	12 48	12 48	24 96	24 96	24 96	24 96	24 96	24 96
71 N	8 20	8 20	4 20	16 20	4 20	16 20	20 20	8 20	16 20
	16 80	16 80	16 80	32 160	32 160	32 160	32 160	32 160	32 160
69 N	8 20	8 20	4 20	4 20	4 20	8 20	12 20	TR 40	4 20
	12 56	12 48	12 48	12 48	12 48	24 96	24 96	24 96	24 96
67 N	8 20	4 20	4 20	12 20	8 20	4 20	8 20	TR 40	4 20
	16 64	16 48	16 48	24 96	24 96	24 96	24 96	24 96	24 96
65 N		4 20	4 20	4 20	4 20	8 20	12 20	12 20	8 20
		16 64	16 64	16 64	16 64	32 128	32 128	32 128	32 128
63 N		4 20	4 20	4 20	4 20	TR 20	4 20	4 20	8 20
		16 64	16 64	16 64	16 64	TR 20	TR 20	TR 20	TR 20
61 N		4 20	4 20	4 20	TR 20	8 20	8 20	16 20	32 20
		16 64	16 64	16 64	16 64	32 128	32 128	32 128	32 128
59 N			TR 20	TR 20	4 20	8 20	20 20	12 20	64 20
			16 64	16 64	16 64	32 128	32 128	32 128	32 128
57 N			8 20	8 20	20 20	44 20	32 20	32 20	156 20
			16 64	16 64	32 128	64 256	64 256	64 256	64 256
55 N			16 20	164 20	48 20	16 20	44 20	44 20	44 20
			32 128	320 1280	96 384	32 128	32 128	32 128	32 128
53 N			16 20	116 20	36 20	88 20	36 20	36 20	100 20
			32 128	352 1408	72 288	72 288	72 288	72 288	72 288
51 N			24 20	124 20	32 20	24 20	24 20	24 20	100 20
			48 192	496 1984	64 256	48 192	48 192	48 192	48 192

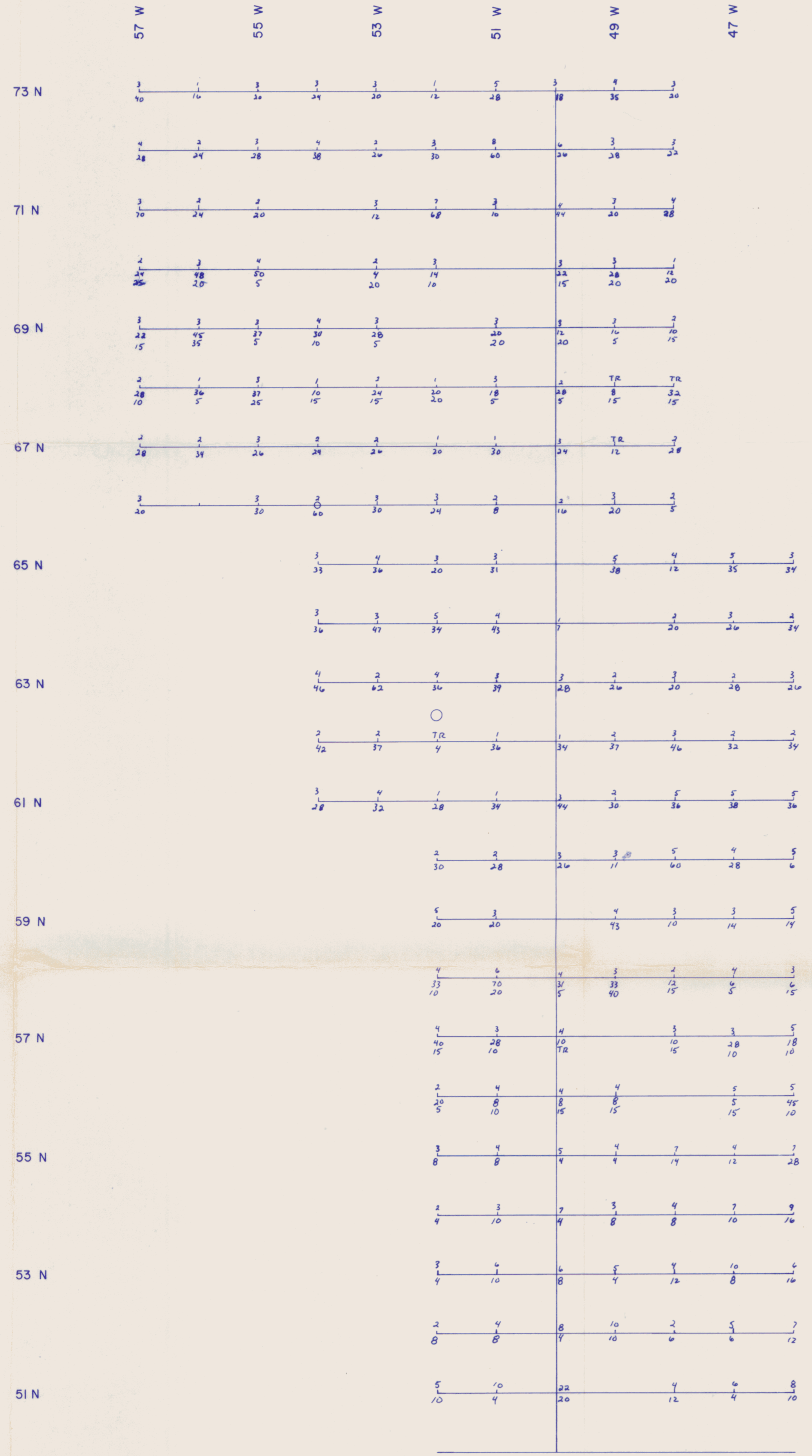


J. Mansford

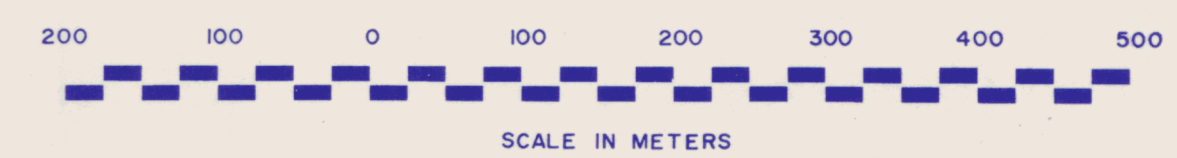
ASSAY ORDER
Cu
Pb
Zn

REVISED	LUCKY LAKE PROPERTY	
	GEOCHEMICAL SOIL SURVEY	
	Cu, Pb, Zn, in P.P.M.	
PROJ. No.	SURVEY BY:	DATE: NOV. 1979
N.T.S. 95 E/8 W	DRAWN BY: S.H.	SCALE: 1:5000
DWG. No.	NORANDA EXPLORATION	
	OFFICE: VANCOUVER	

MAP# 95-E-6 Doc# 090539 (74)



J. MacDonald



ASSAY ORDER
Mo
W
Sn

REVISED	LUCKY LAKE PROPERTY	
	GEOCHEMICAL SOIL SURVEY	
	Mo, W, Sn, in P.P.M.	
PROJ. No.	SURVEY BY:	DATE: NOV. 1979
N.T.S. 95.E./6.W.	DRAWN BY: S.H.	SCALE: 1:5000
DWG. No.	NORANDA EXPLORATION	
	OFFICE: VANCOUVER	

MAP#95-E-6 Doc#090539 (75)