

GEOCHEMICAL SURVEY REPORT

for the

MAT and LAD

Claim Groups

Claim Sheet 115N10
LAT 140°50', LONG 63°32'

Survey performed on 25, 26 & 27 June 1979

by

Resource Associates of Alaska, Inc.
3230 Airport Way
Fairbanks, Alaska 99701



090531

RESOURCE ASSOCIATES OF ALASKA, INC.

This report has been examined by the Geological Evaluation Unit and is recommended to the Commission to be considered as representation work in the amount of

\$ 2,600.00

J. A. Mori

Resident Geologist or
Resident Mining Engineer

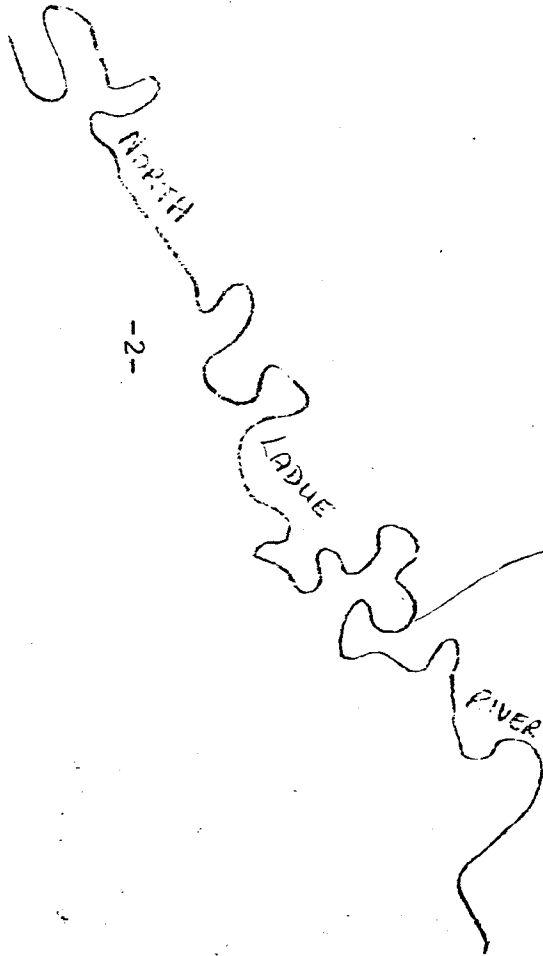
Considered as representation work under
Section 50 (4) Yukon Quartz Mining Act.

B. R. EXTER
Supervising Mining Recorder

R. Commissioner of Yukon Territory

The following compilation of geochemical samples, analytical values, and geologic notes comprises the report of the survey work carried out in 1979 for the benefit of the LAD and MAT claim groups, held by Resource Associates of Alaska, Inc., 3230 Airport Way, Fairbanks, Alaska 99701. These claims are located in the Dawson Mining District, on Sheet 115N10, and are more particularly described below:

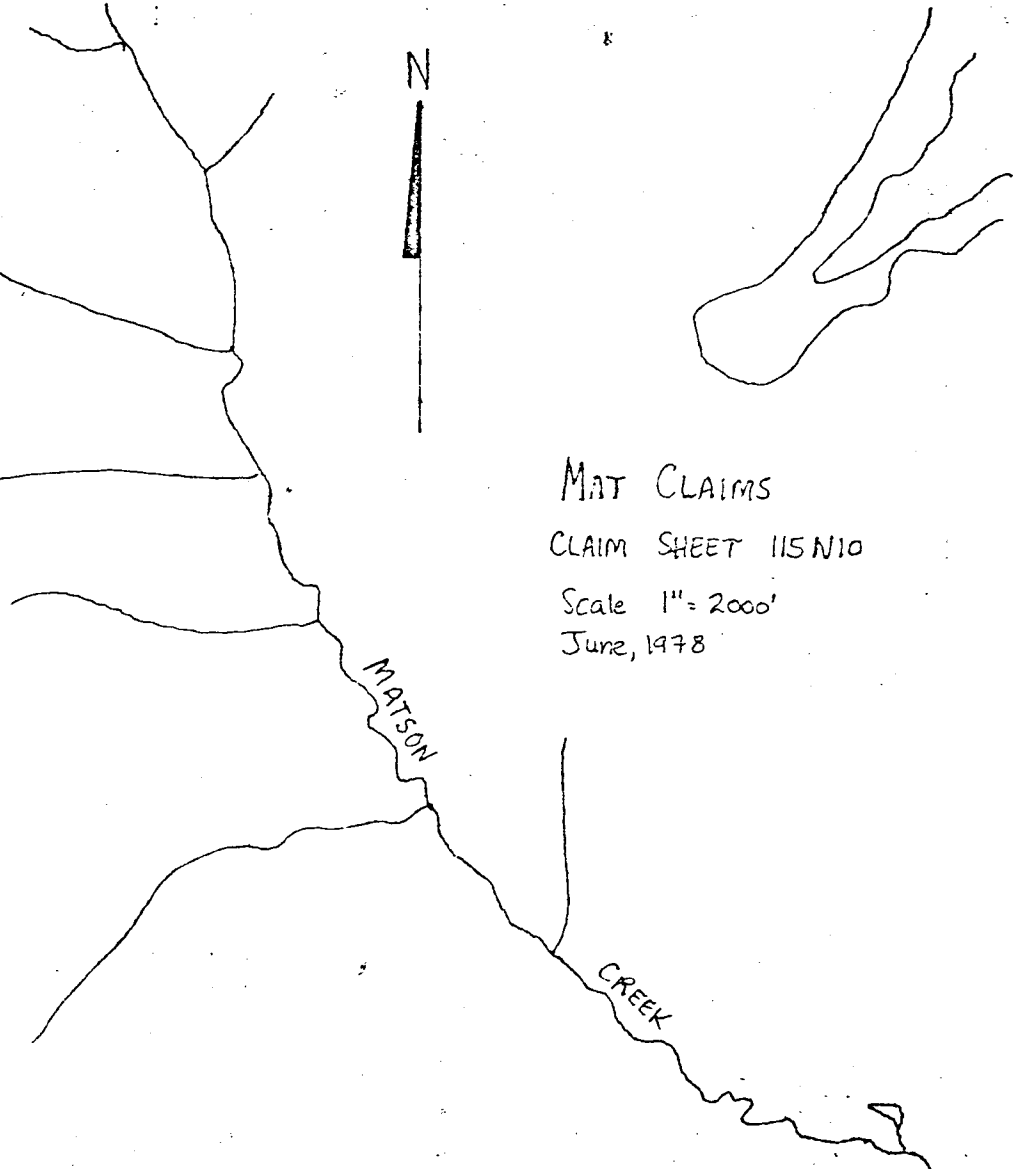
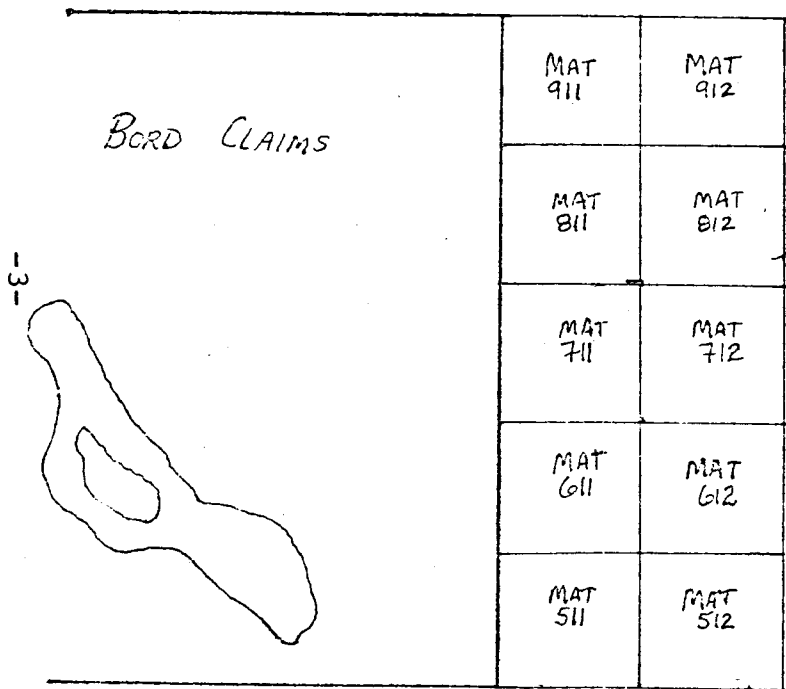
Mnrl Claim	Grant Number	Mining District	Date Located	Date Recorded
LAD 597	YA31090	Dawson	6/19/78	6/27/78
LAD 598	YA31091	"	"	"
LAD 697	YA31092	"	"	"
LAD 698	YA31093	"	"	"
LAD 797	YA31094	"	"	"
LAD 798	YA31095	"	"	"
LAD 897	YA31096	"	"	"
LAD 898	YA31097	"	"	"
LAD 599	YA31098	"	"	"
LAD 600	YA31099	"	"	"
LAD 699	YA31100	"	"	"
LAD 700	YA31101	"	"	"
LAD 799	YA31102	"	"	"
LAD 800	YA31103	"	"	"
LAD 899	YA31104	"	"	"
LAD 900	YA31105	"	"	"
MAT 511	YA31206	Dawson	6/26/78	6/27/78
MAT 512	YA31207	"	"	"
MAT 611	YA31208	"	"	"
MAT 612	YA31209	"	"	"
MAT 711	YA31210	"	"	"
MAT 712	YA31211	"	"	"
MAT 811	YA31212	"	"	"
MAT 812	YA31213	"	"	"
MAT 911	YA31214	"	"	"
MAT 912	YA31215	"	"	"



LAD 897	LAD 898	LAD 899	LAD 900	BOARD CLAIMS
LAD 797	LAD 798	LAD 799	LAD 800	
LAD 697	LAD 698	LAD 699	LAD 700	
LAD 597	LAD 598	LAD 599	LAD 600	

LAD CLAIM BLOCK
Scale 1"=2000'

CLAIM SHEET IIS N10



MAT CLAIMS
CLAIM SHEET 115N10
Scale 1" = 2000'
June, 1978

The field work for this survey was undertaken on 25, 26, and 27 June 1979, by Resource Associates of Alaska, Inc. The individuals who performed the field survey are Ed Chipp and Barry Hoffmann, both of 3230 Airport Way, Fairbanks, Alaska 99701. Mr. Chipp obtained his B.A. and M.Sc. degrees in geology from the Mackay School of Mines, Reno, Nevada, and has over 21 years experience in the mineral and exploration industries. Mr. Hoffmann holds B.S. and M.Sc. degrees in geology from the University of Alaska, Fairbanks, Alaska, and has 13 years experience in the mineral exploration industry.

The field work was done with helicopter support and consisted of collecting soil and silt geochemical samples along certain claim boundaries, and noting physical and geological observations at each sample site. General claim boundary maintenance and posting of grant tags was also performed during this time.

The samples were sent to Resource Associates' analytical lab and analyzed for copper, lead, zinc, and silver. All samples were dried and screened to minus 80 mesh, digested in aqua regia, and analyzed by atomic absorption spectrometry for the desired elements. All analytical data, sample site descriptions, and geological notes were entered into Resource Associates' computer for billing, report writing, and additional data reduction, if desired. A complete printout containing this data for the samples collected on the LAD and MAT claims is included herein. The analytical data and sample sites are plotted at a scale of 1"=1000' and anomalous values have been colored. This map is in the attached pocket.

The geology at the LAD and MAT claims is generally a metarhyolite unit of klondike schist with gossanous zones of rubblecrop. Bedrock exposure is poor, however, and reference is made to the geologic data section of the computer printout for additional information.

The results of the geochemical work undertaken this year indicate anomalous Pb-Zn values ranging up to 1000 ppm Pb and 1200 ppm Zn in soil samples. The anomalous values are associated with disseminated pyrite in metarhyolite float, rubblecrop, and soil chips.

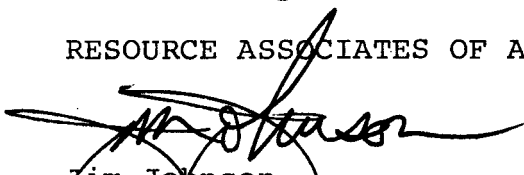
Future work on these claims will include closer-spaced soil sampling on a grid pattern over known anomalous areas, and reconnaissance stream sediment and soil sampling

adjacent to the present claim boundaries to delineate possible extensions of anomalous soil horizons into the lower-lying topography of the Ladue River and Matson Creek drainages. It is anticipated that the results of a more detailed sampling program over known anomalies will lead to a decision to undertake a ground geophysical survey. Due to extensive ground cover, geologic mapping is not likely to provide enough information to base further development decisions on.

As previously stated in the affidavits of labor for the LAD and MAT claims, the value of this survey is at least \$1,600 for the LAD and \$1,000 for the MAT claims. This work required approximately six man days in the field and three days office work. Copies of the lab computer billing, which covers the billing for the analyses included in this survey, and the helicopter flight sheets for the days involved are attached. The helicopter is charged internally at \$360 per hour.

Pursuant to the provisions of applicable law, please treat this data confidentially.

RESOURCE ASSOCIATES OF ALASKA, INC.



Jim Johnson
3230 Airport Way
Fairbanks, Alaska 99701

4 October 1979

Analytical, Sample Site Description, and
Geologic Data

SAMPLE TYPE BATCH						SAMPLE SITE	GEOLOGICAL DATA
082348	RG 3893	AG: 0.4 CU: 4 ZN: 3	AU: -0.1 PB: 24		YUKON BORD FC 06/25/79 3150	40 MI DOME; CANADA 116C-7. SPEC. SAVED. ON BH CLAIM BLOCK 40 MI MI SHEET IN CAN- ADA. BXIATED & SILIF F LAPILLI RHYO WELDED TUFF W/+2% VERY F PY. FRAC AREAS HAVE A BIT OF REMOBILIZED COARSE-GR PY & RARE GAL OR ZNS. SPL IS NOT (SEE CARD)	
					101 60 GREEN FT.		
082348D	RG 3893	AG: 0.5 CU: 3 ZN: 3	AU: -0.1 PB: 24		YUKON BORD FC 06/25/79 3150	40 MI DOME; CANADA 116C-7. SPEC. SAVED. ON BH CLAIM BLOCK 40 MI MI SHEET IN CAN- ADA. BXIATED & SILIF F LAPILLI RHYO WELDED TUFF W/+2% VERY F PY. FRAC AREAS HAVE A BIT OF REMOBILIZED COARSE-GR PY & RARE GAL OR ZNS. SPL IS NOT (SEE CARD)	
					101 60 GREEN FT.		
082349	RG 3893	AG: -0.1 CU: 67 SP: -10 ZN: 114	AU: -0.1 PB: 1 S: -5		YUKON BORD FC 06/25/79 2950	YUK 116C-10. MOUNT CLADMAN SHEET - BXIATED & TRANSPORTED IRON-STM MASINA QTZT. LOCAL PITCH LIMO.	
					101 10 GREEN FT.		
082350	RG 3893	AG: 0.9 CU: 110 SP: -10	AU: -0.1 PB: 1 ZN: 300		YUKON BORD FC 06/25/79 3020	YUKON 116C/10. +-800' NORTH OF 82349R IS SIMILAR BUT W/BETTER F QTZ VEINLETS & VARIOUS COLORED LIMONITES INCLUDING MONZ.	
					101 20 GREEN FT.		
082351	PG 3893	SP: 10	S: 9		YUKON BORD FC 06/25/79	BOUNDARY 116C-10. +-20 SMALL PIECES CANO3 & FEW ORNG FLUOR. GOOD MAGNETITE. TRACE BIOT QTZ MONZ; GRN SCH W/ANDES & MARIPOSITE. TRACE F META RHYO; BLK PHYLL & MASINA QTZT - MOSTLY KLONDIKE.	
					101 18		

PREPARED BY RESOURCE ASSOC. OF ALASKA

1979 YIU PROJECT ANALYTICAL RESULTS
10/2/79

PAGE 2

SAMPLE TYPE BATCH					SAMPLE SITE	GEOLOGICAL DATA
082352 PG 3893	SM:	-10		10	YUKON BORD EC 06/25/79	BNDRY 116C-10. NO BUILD-UP OF HEAVIES EVEN THOUGH ABNT GRAN; SERPENTINITE & GRN SCH IN FLOAT. ALSO HMFLS & QTZT W/LOTS F PY & PYRROTITE (HMFLS) SOME METACARBONATE DUE TO SERPENTINE.
					101 40	
082353 SG 3893	AG:	-0.1	CU:	29	YUKON BORD	BNDRY 116C-10. @ 82352P. LOTS SULF.
	PH:	10	U:	3.5	EC 06/25/79	
	ZN:	93				
					3-6' .5-1' N T M A	
082354 PG 3893	SM:	-10		52	YUKON BORD	YUKON 116C-10. ABNT MAGNETITE COMING FROM BIOT; QTZ MONZ & BLK QTZ-FELDS PORPH THAT IS ARGILLIC ALT. MINOR OTHER FLOAT LIKE GRITS & BLK SCH. GOOD SHEARING. +- 40 PIECES CA#04.
					EC 06/25/79 1350	
					101 60	
082355 SG 3893	AG:	-0.1	CU:	13	YUKON BORD	YUKON 116C-10. AS @ 82354P. RARE PIECE TACTITE.
	PH:	11	U:	6.2	EC 06/25/79	
	ZN:	77				
					101 60	
					6-9' .5-1' N T L A	
082358 DG 3893	AG:	-0.1	CU:	27	YUKON BORD	MAT 115N/10. 200' SOUTH OF #2 CORNERS OF MAT 911 & MAT 912. BELOW OVERTURNED TREE IS SILT-RK W/ICE +- 1' DOWN. POOR SPL.
	PH:	9	ZN:	57	EC 06/26/79 2670	

10 IN. B C M N R M N

PREPARED BY RESOURCE ASSOC. OF ALASKA

SAMPLE TYPE BATCH

SAMPLE SITE

GEOLOGICAL DATA

082359 DG 3893	AG: -0.1 PH: 10	CU: 10 ZN: 38	YUKON BORD EC 06/26/79	MAT. 600' S #2 CORNERS MICA SAND & QTZ W/FE COL BELOW MOSS.
			12 IN. B T M N R M N	
082360 DG 3893	AG: -0.1 PH: 19	CU: 20 ZN: 56	YUKON BORD EC 06/26/79	MAT. 1000' S # 2 CORNERS QSS F METARHYO W/FE STAINS.
			12 IN. B C M N R M N	
082361 DG 3893	AG: -0.1 PH: 14	CU: 20 ZN: 64	YUKON BORD EC 06/26/79	MAT. @ 1400' SOUTH #2 CORNERS OF MAT 911/912.
			12 IN. B C M N R M N	
082362 DG 3893	AG: -0.1 PH: 18	CU: 23 ZN: 67	YUKON BORD EC 06/26/79	MAT. @ #1 CORNERS 911 & 912 OF MAT CLAIMS.
			12 IN. B T M N R M N	
082363 DG 3893	AG: -0.1 PH: 16	CU: 18 ZN: 59	YUKON BORD EC 06/26/79 2660	YUKON MAT. 400' SOUTH OF #1 CORNERS MAT #911 & 912. RK CHIPS ARE.
			12 IN. B C M N R M N	

PREPARED BY RESOURCE ASSOC. OF ALASKA

1979 YTU PROJECT ANALYTICAL RESULTS
10/2/79

PAGE 4

SAMPLE TYPE BATCH				SAMPLE SITE		GEOLOGICAL DATA	
082364	DG	3893	AG: -0.1 PH: 11	CU: 18 Zn: 44	YUKON BORD EC 06/26/79 2680	MAT. @ 800' SOUTH #1 CORNERS MAT #911 & 912.	
						12 IN. B C M N R M N	
082365	DG	3893	AG: -0.1 PH: 10	CU: 24 Zn: 61	YUKON BORD EC 06/26/79 2680	YUKON MAT. 1200' S OF # 1 CORNERS MAT 911 & 912.	
						12 IN. B C M N R M N	
082366	DG	3893	AG: 2.1 PH: 320	CU: 31 Zn: 73	YUKON BORD EC 06/27/79	MAT. @ 600' S OF #1 CORNER MAT 811 & 812. RK SPL HERE AS WELL. QSS METARHYO & VN QTZ BX W/PY & ARSPY(?).	
						12 IN. B C M N R M N	
082367	RG	3893	AG: 27.0 PH: 1590	CU: 9 Zn: 4	YUKON BORD EC 06/26/79	MAT. @ 82366D. BX VN QTZ AFTER METARHYO.	
						G R N N FT.	
082368	DG	3893	AG: -0.1 PH: 13	CU: 17 Zn: 53	YUKON BORD EC 06/26/79	MAT. @ 1000' S OF #1 CORNER MAT 811/812.	
						12 IN. B C M N R M N	

PREPARED BY RESOURCE ASSOC. OF ALASKA

1979 YTD PROJECT ANALYTICAL RESULTS PAGE 5
10/2/79.

SAMPLE TYPE BATCH				SAMPLE SITE		GEOLOGICAL DATA		
182369	DG	3893	AG: PB:	-0.1 16	CU: ZN:	19 58	YUKON BORD EC 06/26/79 2750	YUKON MAT. @ #1 CORNER MAT 711 & 712.
12 IN. B C M N R M N								
182370	SG	3893	AG: PB:	-0.1 28	CU: ZN:	10 46	YUKON BORD EC 06/26/79	YUKON MAT. @ 250' S OF #1 CORNERS MAT 711 & 712. SPRING ISSUING OUT IN TUNDRA w/QSS RL (F w/PY?).
<1.0-0.5' N C L A								
182371	DG	3893	AG: PB:	-0.1 32	CU: ZN:	15 59	YUKON BORD EC 06/26/79	YUKON MAT. COLOR = G ALSO. 400' S #1 CORNER MAT 711/712.
12 IN. B C M N R L N								
182372	SG	3893	AG: PB:	-0.1 34	CU: ZN:	26 70	YUKON BORD EC 06/26/79	YUKON MAT. +- 750' S #1 MAT 711/712. SMALL CREEK w/STRONG FE & KNOBBY RHYO TUFFS (10 1" BUT FLATTENED) & LOTS FORMER PY. ALSO; ABNT MARIPPOSITE IN RHYO & IN GRN SCH. CHTY RHYO (FLOW??).
1-3' 0-.5' N C L A								
182373	DG	3893	AG: PB:	-0.1 31	CU: ZN:	110 70	YUKON BORD EC 06/26/79	YUKON MAT. @ 1200' S OF MAT #1 CORNER 711/712. FAIR EXLATED & VEINED (WITH LIMO AFTER PY) QSS (RLT) w/DISS PY->LIMO.
12 IN. B C M N R M N								

PREPARED BY RESOURCE ASSOC. OF ALASKA

SAMPLE TYPE BATCH				SAMPLE SITE			GEOLOGICAL DATA	
182374	OG	3893	AG: PB:	-0.1 40	CU: ZN:	130 109	YUKON BORD EC 06/26/79 2980	YUKON MAT. @ 400' S OF #1 CORNER 611/612 MAT. RK IS QTZ-FELDS-CHLOR- ACTINOLITE(?) SCH TO GSS (LOOKS LIKE BIRCH CREEK).
							12 IN. B C M N R L N	
182375	OG	3893	AG: PB:	-0.1 20	CU: ZN:	130 93	YUKON BORD EC 06/26/79	YUKON MAT. COL = BRN ALSO. @ 800' S #1 OF MAT 611 8612. PYRITIC GSS RL (F).
							10 IN. B C M O R L N	
182376	OG	3893	AG: PB:	-0.1 35	CU: ZN:	110 112	YUKON BORD EC 06/26/79 3050	YUKON MAT. COL = BRN ALSO. PYRITIC (LIM) GSS W/ABNT QTZ SHEAT ALONG FOLIATION @1200' S OF #1 OF 611/612 MAT CLAIMS.
							10 IN. B C M O R L N	
182377	SG	3894	AG: PB:	-0.1 148	CU: ZN:	36 154	YUKON BORD EC 06/27/79	LAD 115N10. 120' NORTH OF #1 CORNERS LAD 799 & 800 (STAKED JUNE 19: 1978) IS SMALL CREEK W/GSS (RLT PY) W/FRAGS TO 1/2".
							1-3' .5-1' N T M A	
182378	OG	3894	AG: PB:	-0.1 46	CU: ZN:	38 78	YUKON BORD EC 06/27/79	300' NORTH #1 LAD 799 & 800 GSS RL (PY) LIKE IN CREEK. LAD 115N10
							12 IN. B C M N R M N	

SAMPLE TYPE BATCH

SAMPLE SITE

GEOLOGICAL DATA

SAMPLE TYPE BATCH	AG	PH	CU	ZN	YUKON EC	BORD	GEOLOGICAL DATA
0823780 DG 3894	-0.1	47	36	75	YUKON EC	BORD 06/27/79	300' NORTH #1 LAD 799 & 800 QSS RL T (PY) LIKE IN CREEK. LAD 115N10
							12 IN. H C M N R M N
082379 DG 3894	-0.1	49	28	72	YUKON EC	BORD 06/27/79 2150	LAD 115N10. 500' N OF #1 LAD 799/800 QSS (RLT; QC TO 1/3"; TRACE PY) ALSO VN DTZ.
							8 IN. B C M N R L N
082380 SG 3894	-0.1	49	19	124	YUKON EC	BORD 06/27/79	LAD 115N10. 800' NORTH OF #1 LAD 799/800. CREEK (MAIN) 20' N OF STATION; FLOAT IS QSS (RLT W/BANDS & DISS PY) + LAPILLI CLASTS TO 1/2") PLUS QSCS (DACITIC TO WITHRD GRN SCH).
							1-3' .5-1' N T L A
082381 DG 3894	-0.1	14	32	47	YUKON EC	BORD 06/27/79 2080	1100' NORTH #1 LAD 799/800. PROBABLY GREEN SCH (DARK GRAY BRN MUD). LAD 115N10.
							12 IN. H C M N R L N
082382 DG 3894	-0.1	9	21	32	YUKON EC	BORD 06/27/79	LAD 115N10. 1300' N LAD #1 OF 799/800 QSS (RLT PY) & POSSIBLY GRN SCH (DUE TO DARK BRN MUD COLOR). NOTE: DISTANCE IS 1300' NORTH NORTH (CLAIM POST UP +- 200' FURTHER NORTH).
							10 IN. B C M N R L N

PREPARED BY RESOURCE ASSOC. OF ALASKA

SAMPLE TYPE BATCH

SAMPLE SITE

GEOLOGICAL DATA

2383 DG	3894	AG: -0.1 PB: 11	CU: 23 Zn: 38	YUKON BORD EC 06/27/79	LAD 115N10. @ #1 CORNERS 899/900 PROBABLY QSCS (NO CHIPS).
12 IN. B C M N R L N					
2384 DG	3894	AG: -0.1 PB: 9	CU: 16 Zn: 36	YUKON BORD EC 06/27/79 2150	LAD 115N10. 200' NORTH OF #1 OF LAD 899/900. PROBABLY LITTLE FE-STND QSS.
12 IN. B C M N R L N					
2385 DG	3894	AG: -0.1 PB: 8	CU: 15 Zn: 30	YUKON BORD EC 06/27/79 2240	LAD 115N10. 400' NORTH #1 LAD 899/900. QSS CHIPS W/FAINT LIMO.
12 IN. B C M N R L N					
2386 DG	3894	AG: -0.1 PB: 9	CU: 17 Zn: 32	YUKON BORD EC 06/27/79	LAD 115N10. 600' N OF LAD #1 899/900. CHIPS ARE ALL VN QIZ (META) MORE BRN TO GRNG (INCREASE LIMO AFTER PY).
12 IN. B C M N R L N					
2387 DG	3894	AG: -0.1 PB: 10	CU: 19 Zn: 41	YUKON BORD EC 06/27/79	LAD 115N10. @ 800' N #1 899/900. QSS CHIPS W/FAIR LIMO.

12 IN. B C M N R L N

PREPARED BY RESOURCE ASSOC. OF ALASKA

1979 YTH PROJECT ANALYTICAL RESULTS
10/27/79

PAGE 9

SAMPLE TYPE BATCH						SAMPLE SITE	GEOLOGICAL DATA
082388	DG 3894	AG: -0.1 PR: 12	CU: Zn:	16 36	YUKON BORD EC 06/27/79	LAD 115N10. 1000' N OF #1 899/900 LAD. QSS CHIPS & META-Qtz.	
10 IN. B C M R R L N							
082389	DG 3894	AG: -0.1 PR: 9	CU: Zn:	8 29	YUKON BORD EC 06/27/79	LAD 115N10. 1200' N LAD 899/900 (#1 CORNERS) QSS.	
10 IN. B C M R R L N							
082390	DG 3894	AG: -0.1 PR: 7	CU: Zn:	5 33	YUKON BORD EC 06/27/79 2350	LAD 115N10. #2 CORNERS LAD 899/900 QSS (1400' ?)	
12 IN. B C M R R L N							
082391	DG 3894	AG: -0.1 PR: 50	CU: Zn:	18 35	YUKON BORD EC 06/27/79	LAD 115N10. 400' WEST OF #2 899/900. QSS CHIPS.	
12 IN. B C M R R L N							
082392	DG 3894	AG: -0.1 PR: 17	CU: Zn:	14 25	YUKON BORD EC 06/27/79	LAD 115N10. 600' WEST OF #2 899/900. QSS.	
10 IN. B C M R R L N							

PREPARED BY RESOURCE ASSOC. OF ALASKA

SAMPLE TYPE BATCH				SAMPLE SITE			GEOLOGICAL DATA	
082393	DG	3894	AG: -0.1 PB: 59	CU: Zn:	10 8	YUKON BORD EC 06/27/79	LAD 115N10. QSS GOOD ORNG LIMONITIC SOIL @ 1000' WEST OF #2 CORNERS LAD 899/900.	
							8 IN. B C M O R L N	
082394	DG	3894	AG: -0.1 PB: 33	CU: Zn:	8 9	YUKON BORD EC 06/27/79	LAD 115N10. @ 1400' WEST OF #2 CORNERS LAD 899/900. ORNG SOIL DUE TO LIMONITE IN QSS.	
							10 IN. B C D O R L N	
082395	DG	3894	AG: -0.1 PB: 55	CU: Zn:	17 27	YUKON BORD EC 06/27/79	LAD 115N10. 1800' WEST OF #2 OF 899/900 QSS ORANGE.	
							12 IN. B C M O R L N	
082396	DG	3894	AG: -0.1 PB: 36	CU: Zn:	23 47	YUKON BORD EC 06/27/79	LAD 115N10. @ 2200' WEST OF #2 CORNER 899/900. BROWN SOIL.	
							12 IN. B C D N R L N	
082397	DG	3894	AG: -0.1 PB: 64	CU: Zn:	33 49	YUKON BORD EC 06/27/79	LAD 115N10. @ 2800' WEST OF #2 899/900. (NOTE - MOVE LAST TWO 100' FURTHER WEST - FOUND CLAIMS. GNSCHIST QSS.	
							12 IN. B C M N R L N	

PREPARED BY RESOURCE ASSOC. OF ALASKA

SAMPLE TYPE BATCH				SAMPLE SITE		GEOLOGICAL DATA	
082398	DG	3894	AG: -0.1 PB: 107	CU: 34 Zn: 66	YUKON BORD EC 06/27/79	LAD 115N10. @ 3000' WEST 899/900. @ #2 898/897. GMSCH NCSS.	
10 IN. B C M N R L N							
082399	DG	3894	AG: -0.1 PB: 144	CU: 49 Zn: 75	YUKON BORD EC 06/27/79	LAD 115N10. 200' SOUTH #2 OF 898/897.	
082400	DG	3894	AG: -0.1 PB: 85	CU: 30 Zn: 54	YUKON BORD EC 06/27/79	LAD 115N10. @ 400' SOUTH #2 897/898. GRN SCH W/LIMO STAINS.	
12 IN. B C M N R L N							
082441	DG	3896	AG: 1.4 PB: 39 Zn: 70	CU: 24 U: 6.6	YUKON BORD BH 06/25/79 3150 0002.4 0044.2	116C17. SOIL UP SLOPE FROM CHOPPER V.F. GR TUFF. THE CLAIM BLOCK IS MAINLY TUFF W/DISS PY SOME ONLY SLIGHTLY ALTERED.	
HGS1 150 8 IN. B I M O C L N							
082442	DG	3896	AG: -0.1 PB: 10 Zn: -5	CU: 71 SN: -10 Zn: 46	YUKON BORD BH 06/25/79 3000	RESAMPLE OF SITE 1286 W/180SW RX ARE. META SEDS W/SLIGHT SILI VOLC?? LESS BXIATION THAN NEAR HELICOPTER. 116C/10.	
HGS1 80 6 IN. B C D N C L N							

SAMPLE TYPE BATCH					SAMPLE SITE	GEOLOGICAL DATA	
082443 DG 3896	AG:	-0.1	CU:	26	YUKON HORD	COLOR = BRN ALSO. SAMPLE ALONG RIDGE IN	
	PH:	8	SN:	-10	BH 06/25/79	3000	INTRUSIVE BX ZONE (QTZT & QTZ & LI-MO
	ZP:	-5	ZN:	55			FILL). MINOR PITCH LI-MO. 116C/10.
					BGS1 60		
					6 IN. H C D D C L N		
082444 DG 3896	AG:	-0.1	CU:	40	YUKON HORD	SLIGHTLY HORNEFISED? QTZT. 116C/10.	
	PH:	8	SN:	-10	BH 06/25/79	3020	
	ZP:	-5	ZN:	59			
					BGS1 80		
					6 IN. C C D R C L N		
082445 DG 3896	AG:	-0.1	CU:	40	YUKON HORD	COL = G ALSO. SOIL SITUS = A ALSO.	
	PH:	7	SN:	-10	BH 06/25/79	3000	AT HELICOPTER BXIATED NITZ - NOTHING
	U:	2.9	V:	-5			GOOD FOR TIN.
	ZP:	43					
					BGS1 60		
					6 IN. C C D N C L N		
082446 SG 3896	AG:	-0.1	CU:	47	YUKON HORD	116C/10. CHLOR SCH; GRAPHITE SCH	
	PH:	6	U:	2.2	BH 06/25/79	940	& OTHER META SEDS. POSSIBLE META VOLC.
	ZP:	44					
					1-3' 0-.5'	H I L A	
082447 SG 3896	AG:	-0.1	CU:	15	YUKON HORD	SIZE = C ALSO. APPROX 60% INTRUSIVE FLT	
	PH:	19	U:	6.2	BH 06/25/79	940	-REST META SEDS W/ APPROX 1% TACT MINOR
	ZP:	45					FLOURITE BEARING INTRUSIVE (F GR MUSC
							BIOT GRAN). 116C/10.
					BGS1 200		
					3-6' 0-.5'	N I L A	

PREPARED BY RESOURCE ASSOC. OF ALASKA

1979 YIU PROJECT ANALYTICAL RESULTS
10/2/79

PAGE 13

SAMPLE TYPE BATCH				SAMPLE SITE		GEOLOGICAL DATA	
082448	PG	3896	SH:	-10	N : 27	YUKON BORD BH 06/25/79	SIZE = C ALSO. @ 475 - MINOR MAGNETITE IN PAN. APPROX 30-40 SMALL SCH. 116C/10.
082449	PG	3896	SH:	-10	N : 45	YUKON BORD BH 06/25/79 1260	STR. WIDTH = C ALSO. SIZE = C ALSO. APPROX 10% LOW GRADE TACT REST INTRU- SIVE & SEDS. 80-90 GRAINS. 116C/10.
082450	SG	3896	AG: PB: Z:	0.5 55 210	CU: U : 7.2	47 YUKON BORD BH 06/25/79	@ 49P. 116C/10.
				1-3' 0-.5' N T L A			
082451	PG	3896	SH:	-10	N : 9	YUKON BORD BH 06/25/79 2600	SIZE = C ALSO. 116C/. LIBERTY FORK - META SEDS (GRAPHITES) MINOR MAFIC DIKE? AND VN QTZ. BEAVERDAM ARV. NO SCH.
				BGS1			
082452	SG	3896	AG: PB: Z:	-0.1 9 69	CU: U : 3.4	19 YUKON BORD BH 06/26/79 2600	SIZE = T & C ALSO. 116C. LIBERTY FORK @ 2451P.
				1-3' 0-.5' N S L A			

PREPARED BY RESOURCE ASSOC. OF ALASKA

SAMPLE TYPE BATCH

SAMPLE SITE

GEOLOGICAL DATA

SAMPLE TYPE BATCH	AG:	PH:	CU:	ZN:	SAMPLE SITE	GEOLOGICAL DATA
082453 DG 3896	-0.1	9	26	56	YUKON BORD BH 06/26/79 3500	115N10. POST 2 14;15. THIN MUSC (SER) SCH & QSS.
					1' IN. B T M Q C M N	
082454 DG 3896	-0.1	14	22	64	YUKON BORD BH 06/26/79	115N/10. 400' FROM POST #2 14;15. NO FLOAT.
					1' IN. C C D N C M	
082455 DG 3896	-0.1	20	27	69	YUKON BORD BH 06/26/79	SIZE = C ALSO. 115N/10. QTZ CHLOR SCH FIT. HIGH ORGANIC POOR SPL - ZONE BULL QTZ ON SURF.
					1' IN. B T M G C H N	
082456 DG 3896	-0.1	16	19	56	YUKON BORD BH 06/26/79	QSS & QSCS MINOR DISS PY. 115N10
					18 IN. C C D R C L N	
082457 DG 3896	-0.1	12	20	57	YUKON BH 06/26/79	HOR=C ALSO. 115N/10. BORD. +200 POST 1.
					8 IN. B T M N C L N	

SAMPLE TYPE BATCH				SAMPLE SITE			GEOLOGICAL DATA
082458	DG	3896	AG: -0.1 PB: 6	CU: 23 ZN: 54	YUKON BORD BH 06/26/79	HOR = C. SIZE = C. COLOR = G ALSO. 115N/10. B/G = NO READING.	
BGS1 1' IN. B T M N C M N							
082459	DG	3896	AG: -0.1 PB: 9	CU: 34 ZN: 61	YUKON BORD BH 06/26/79	HOR = R ALSO. SIZE = C ALSO. SOIL SITUS = A ALSO. 115N/10. +1000' FROM POST 1 QSS CHIPS.	
1' IN. C T M N C M N							
082460	DG	3896	AG: -0.1 PB: 11	CU: 22 ZN: 55	YUKON BORD BH 06/26/79	HOR = C ALSO. 115N/10. +1400' QSS.	
1' IN. B C D N C M N							
082461	SG	3896	AG: -0.1 PB: 70	CU: 62 ZN: 550	YUKON BORD BH 06/26/79	SIZE = C ALSO. 115N/10. +200' POST 1 811. FE STREAM - LOT FE STAIN GOOD LOOKING QSS (SMALL QSS SOME DUST TUFF.	
1-3' 0-.5' N T L A							
082462	DG	3896	AG: 0.8 PB: 75	CU: 37 ZN: 136	YUKON BORD BH 06/26/79	115N/10. ACROSS STREAM + 400' FROM MAT 811.	
1' IN. B T M N C M N							

SAMPLE TYPE BATCH				SAMPLE SITE			GEOLOGICAL DATA
082463	DG	3896	AG: -0.1 PB: 12	CU: 18 ZN: 55	YUKON BORD BH 06/26/79	MAT + 800 ON 811. NO FLOAT. 115N/10.	
1' IN. B T M G C M N							
082464	DG	3896	AG: -0.1 PB: 13	CU: 18 ZN: 60	YUKON BORD BH 06/26/79	1200' MAT 811. NO FLT. POOR SPL. 115N/10.	
1 IN. B T M G C M N							
082465	SG	3896	AG: -0.1 PB: 21	CU: 9 ZN: 41	YUKON BORD BH 06/26/79	115N/10. +200' 811 - SMALL SPRING SPL IS STREAM SED. GOOD QSS.	
<1.' 0-.5' N T L A							
082466	DG	3896	AG: -0.1 PB: 44	CU: 19 ZN: 64	YUKON BORD BH 06/26/79	115N/10. SIZE = C. +600 FROM 811. GOOD QSS ALONG WAY. NO FLT AT SITE.	
1' IN. B T M N C L N							
082467	DG	3896	AG: 0.4 PB: 32	CU: 190 ZN: 81	YUKON BORD BH 06/26/79	HDR = C ALSO. 116N/10. + 800' FROM 811 APPROX 8' FROM STREAM. GOOD SPL QSS IN STREAM IN HILLSIDE IN TUNDRA BREAK.	
8 IN. B C M N C L N							

PREPARED BY RESOURCE ASSOC. OF ALASKA

SAMPLE TYPE BATCH				SAMPLE SITE		GEOLOGICAL DATA
0824670	DG	3896	AG: 0.4 PR: 30	CU: 180 Zn: 78	YUKON BORD BH 06/26/79	HOR = C ALSO. 116N/10. + 800' FROM 811 APPROX 8' FROM STREAM. GOOD SPL QSS IN STREAM IN HILLSIDE IN TUNDRA BREAK.
8 IN. B C M N C L N						
082468	DG	3897	AG: -0.1 PR: 36	CU: 310 Zn: 76	YUKON BORD BH 06/26/79	MAT 115N1/10; +1000' FROM 811; QSS; LOTS OF BUGS.
12 IN. K T M N C M N						
082469	DG	3897	AG: -0.1 PR: 27	CU: 95 Zn: 86	YUKON BORD BH 06/26/79	AT 611; QSS PY - GOOD SPL. MAT 115N/10. HOR = 8 ALSO. COLOR = R & BRN ALSO. ORG = L ALSO.
8 IN. C C D O C M N						
082470	DG	3897	AG: -0.1 PR: 31	CU: 120 Zn: 67	YUKON BORD BH 06/26/79	HOR = C ALSO. COLOR = BRN ALSO. MAT 115N/10; SOIL - GOOD; +200'.
10 IN. B C M O C M N						
082471	DG	3897	AG: -0.1 PR: 112	CU: 110 Zn: 117	YUKON BORD BH 06/26/79	MAT 116N/10; +600' FROM LAST CLAIM. MINOR RUBBLE-QCSS & QTZ.
8 IN. B C D O C L N						

SAMPLE TYPE BATCH						SAMPLE SITE		GEOLOGICAL DATA	
082472	DG 3897	AG: -0.1 PR: 64	CU: 81 ZN: 82	YUKON BH 06/26/79	BORD	MAT 115N/10. SIZE = C ALSO. SOIL SITUS = A ALSO. MINOR FLOAT PYRITIC QSS IN HOLE.			
8 IN. B T D O C L N									
082473	DG 3897	AG: -0.1 PR: 42	CU: 27 ZN: 57	YUKON BH 07/26/79	BORD	MAT 115N/10. SIZE = C ALSO. MOIST = M ALSO. QSS & QSCS AT 511 & 512.			
8 IN. B T D O C M N									
082473D	DG 3897	AG: -0.1 PR: 41	CU: 26 ZN: 54	YUKON BH 07/26/79	BORD	MAT 115N/10. SIZE = C ALSO. MOIST = M ALSO. QSS & QSCS AT 511 & 512.			
8 IN. B T D O C M N									
082474	DG 3898	AG: -0.1 PR: 1000	CU: 84 ZN: 200	YUKON BH 06/27/79	BORD	LAD 115N/10. SIZE = C ALSO. 799-800 #1 CLAIM SOIL. NO FLOAT.			
18 IN. C T M G C H N									
082475	DG 3898	AG: -0.1 PR: 340	CU: 45 ZN: 127	YUKON BH 06/27/79	BORD	LAD 115N/10. SIZE = C ALSO. +200 FROM 799 TO S MOSS COVER SOIL CONTAIN RHY CHIPS W/DISS PY.			
12 IN. B T M O C L N									

SAMPLE TYPE BATCH						SAMPLE SITE		GEOLOGICAL DATA
082476	DG	3898	AG: PB:	0.3 1420	CU: ZN:	87 105	YUKON RORD BH 06/27/79	LAD 115N/10. SOIL SITUS = A ALSO. + 400' S OF 799. THICK MOSS COVER - META RHYO W/DISS PY IN RUBBLE.
8 IN. C C M O C L N								
082477	DG	3898	AG: PB:	0.8 370	CU: ZN:	76 106	YUKON RORD BH 06/27/79	LAD 115N/10. HOR = C ALSO. COL = P ALSO. SOIL SITUS = A ALSO. +600' S OF 799. GOOD PYRITES. META RHYO- DUST TUFFS.
10 IN. B C M O A L N								
082478	DG	3898	AG: PB:	-0.1 46	CU: ZN:	11 49	YUKON RORD BH 06/27/79	LAD 115N/10. HOR = C ALSO. + 800' S 799 STILL THICK MOSS - IN SOIL PY RHYO CHIPS.
12 IN. B C M O C M N								
082479	DG	3898	AG: PB:	-0.1 33	CU: ZN:	29 89	YUKON RORD BH 06/27/79	LAD 115N/10. COL = G ALSO. + + 1000' S OF 799. PYRITIC RHYO w/ APPROX 70% CHLORITIC (DARK GRN TO BLK) PY RHYO?
6 IN. B C M O C L N								
082480	DG	3898	AG: PB:	-0.1 46	CU: ZN:	15 35	YUKON RORD BH 06/27/79	LAD 115N/10. HOR = C ALSO. COL = BRN ALSO. APPROX + 1300' S OF 799- WENT TO FLAG - GOT OFF LINE. LOOKS LIKE META SEDS (QCSC) BUT COULD BE ALT VOLC?
6 IN. B T M O C L N								

PREPARED BY RESOURCE ASSOC. OF ALASKA

SAMPLE TYPE BATCH						SAMPLE SITE	GEOLOGICAL DATA
082481	DG 3898	AG: -0.1 PH: 8	CU: 77 ZN: 53	YUKON BORD BH 06/27/79	6 IN. B C M N C L N	LAD 115N/10. AT 699 #1 - WILL TURN ANGLE AT NEXT POST. VERY LITTLE CHIPS IN SOIL MAINLY SPERICITIC SCH.	
082482	DG 3898	AG: -0.1 PH: 6	CU: 17 ZN: 43	YUKON BORD BH 06/27/79	6 IN. B C M N C L N	LAD 115N/10. + 200' S FROM 699. QSS IN HOLE - QTZ MOST COMMON LGE RK.	
082483	DG 3898	AG: -0.1 PH: 33	CU: 87 ZN: 135	YUKON BORD BH 06/27/69	10 IN. B C D N C L N	LAD 115N/10. SIZE = C ALSO. COLOR = GRAY ALSO. + 400' S OF 699. QCS & MINOR QXX MINOR CHIPS ON TOP OF HILL IS APPROX + 350.	
082484	DG 3898	AG: -0.1 PH: 10	CU: 6 ZN: 44	YUKON BORD BH 06/27/79	6 IN. C T M N C L N	LAD 115N/10. SIZE = C ALSO. SOIL SITUS = A ALSO. + 600' S OF 699. RUBBLE IS SMALL CHIPS OF QSS.	
082485	DG 3898	AG: -0.1 PH: 9	CU: 31 ZN: 72	YUKON BORD BH 06/27/79	10 IN. B T M O C L N	LAD 115N/10. + 800' S OF 699. CHLORITIC SCH & QSS.	
					6 IN. B C M N C L N		

SAMPLE TYPE BATCH				SAMPLE SITE			GEOLOGICAL DATA
082486	DG	3898	AG: -0.1 PR: 4	CU: 81 Zn: 45	YUKON BORD BH 06/27/79	LAD 115N/10. COL = GREEN. + 1000' S 699. ONLY SMALL CHLOR SCH FRAG & LARGER PIECES OF MILKY QTZ.	
7' IN. C C D C L N							
082487	DG	3898	AG: -0.1 PR: 59	CU: 55 Zn: 87	YUKON BORD BH 06/27/79	LAD 115N/10. SIZE = C ALSO. COL = GRN. + 1200' S 699. CHLORITIC SCH CHIPS.	
1' IN. B T D C L N							
082488	DG	3898	AG: -0.1 PR: 31	CU: 54 Zn: 82	YUKON BORD BH 06/27/79	LAD 115N/10. HOR = C ALSO. SIZE = C ALSO. MOIST = M ALSO. @ NO. 1 599 GOING W 3000'. NO FLOAT.	
18 IN. B T D G C L N							
082489	DG	3898	AG: -0.1 PR: 10	CU: 10 Zn: 34	YUKON BORD BH 06/27/79	LAD 115N/10. 500' W OF 599. NO FLOAT.	
8 IN. B C D N C L N							
082490	DG	3898	AG: -0.1 PR: 8	CU: 23 Zn: 59	YUKON BORD BH 06/27/79	LAD 115N/10. + 1000' W 599. NO FLOAT.	
11 IN. B C M N C N							

SAMPLE TYPE BATCH						SAMPLE SITE		GEOLOGICAL DATA	
082491	DG	3898	AG: PH:	-0.1 6	CU: ZN:	10 59	YUKON BH 06/27/79	BORD	LAD 115N/10. + 1500' W OF 599. QCSS.
8 IN. C C D N C M N									
082492	DG	3898	AG: PH:	-0.1 9	CU: ZN:	11 38	YUKON BH 06/27/79	BORD	LAD 115N/10. + 2000' W OF 599 NO FLT IN TREES.
12 IN. C T M N C L N									
082493	DG	3898	AG: PH:	-0.1 6	CU: ZN:	8 21	YUKON BH 06/27/79	BORD	LAD 115N/10. + 2500' W OF 599. QSS IN SMALL CHIPS. WET.
8 IN. C C D O C L N									
082494	DG	3898	AG: PH:	-0.1 11	CU: ZN:	15 44	YUKON BH 06/27/79	BORD	LAD 115N/10. HOR = C ALSO. @ #1 597/598. NO FLOAT.
8 IN. B C D N C L N									
082495	DG	3898	AG: PH:	-0.1 11	CU: ZN:	15 36	YUKON BH 06/27/79	BORD	LAD 115N/10. + 200 597/598. NO FLOAT.
8 IN. C C M N C L N									

1979 YTO PROJECT ANALYTICAL RESULTS
10/2/79

PAGE 23

SAMPLE TYPE	BATCH	AG:	CU:	ZN:	SAMPLE SITE	GEOLOGICAL DATA
082496 DG	3898	-0.1 7	35 48		YUKON BORD BH 06/27/79	LAD 115N/10. + 400' N OF 597. NO FLOAT.
					8 IN. B C M N C L N	
082497 SG	3898	-0.1 6	12 43		YUKON BORD BH 06/27/79	LAD 115N/10. + 600' N. QSS & QTZ IN STREAM.
					1-3' 0-.5' N T L A	
082498 DG	3898	-0.1 9	66 69		YUKON BORD BH 06/27/79	LAD 115N/10. + 800'. NO FLOAT.
					8 IN. B C M N C L N	
082499 DG	3898	-0.1 16	49 64		YUKON BORD BH 06/27/79	LAD 115N/10. + 1000' N. QSS CHIPS.
					8 IN. C C M N C L N	
082500 DG	3898	-0.1 8	47 50		YUKON BORD BH 06/27/79	LAD 115N/10. SIZE = C ALSO. SOIL SITUS = A ALSO. + 1200' CHLOR SCH QSS. RAIN.

8 IN. C T M N C L N

PREPARED BY RESOURCE ASSOC. OF ALASKA

SAMPLE TYPE BATCH					SAMPLE SITE		GEOLOGICAL DATA	
0825000	DG 3898	AG: -0.1 PR: A	CU: 48 ZN: 51	YUKON EC 06/27/79	BORD	LAD 115N10. SIZE = C ALSO. SOIL SITUS = A ALSO. + 1200' CHLOR SCH QSS. RAIN.		
8 IN. C T M N C L N								
082501	DG 3912	AG: -0.1 PR: 58	CU: 23 ZN: 43	YUKON EC 06/27/79	BORD	@ 600' SOUTH OF #2 OF 897/898 QSS - GNSCHIST TO QSS LAD 115N10		
12 IN. B C M N R L N								
082502	DG 3912	AG: -0.1 PR: 44	CU: 12 ZN: 39	YUKON EC 06/17/79	BORD	@ 800' SOUTH 897/898 QSS. LAD 115N10.		
12 IN. B C M N R L N								
082503	DG 3912	AG: -0.1 PR: 38	CU: 14 ZN: 35	YUKON EC 06/27/79	BORD	1000' SOUTH 897/898 LAD QSS GNSCH W/SLIGHT LIMO; LAD 115N10		
12 IN. B C M N R L N								
082504	DG 3912	AG: -0.1 PR: 37	CU: 15 ZN: 43	YUKON EC 06/21/79	BORD	1200' SOUTH #2 897/898 QSS (RLT PY) LAD 115N10.		
12 IN. B C M N R L N								

SAMPLE TYPE BATCH

SAMPLE SITE

GEOLOGICAL DATA

082505 DG 3912 AG: -0.1 CU: 26
PR: 71 ZN: 50

YUKON BORD
EC 06/27/79

#1 CORNERS 797/798 LAD QFCSS -
METAPELITE W/LIMO ALONG FRACS.
LAD 115N10.

10 IN. B C M N R L N

082506 DG 3912 AG: -0.1 CU: 28
PR: 75 ZN: 51

YUKON BORD
EC 06/27/79

200' SOUTH OF #1 797/798 IS RUBBLE OF
QFSCS TO GNEISS METAVOLCANIC (DAC?)
W/PROBABLE LAPILLI TO 1/2" (OF FELDS &
QTZ - RHYO?) LAD 115N10.

12 IN. B C M N R L N

082507 DG 3912 AG: -0.1 CU: 20
PR: 52 ZN: 46

YUKON BORD
EC 06/27/79

400' SOUTH #1 797/798; SAME AS 82506.
LAD 115N10.

12 IN. B C M N R L N

082508 DG 3912 AG: -0.1 CU: 36
PR: 173 ZN: 53

YUKON BORD
EC 06/27/79

600' SOUTH #1 797/798; QSS
(RLT PY & QE TO 3/8"); LAD 115N10.

12 IN. B C M N R L N

082509 DG 3912 AG: -0.1 CU: 37
PR: 204 ZN: 61

YUKON BORD
EC 06/27/79

800' SOUTH #1 797/798; VERY QTZ-RICH
(LAMINAE) QSS POSSIBLE EXHAL(?). FAIR
PY IN CERTAIN LAMINAE (CHTY RHYO).
LAD 115N10.

10 IN. B C M N R L N

PREPARED BY RESOURCE ASSOC. OF ALASKA

1979 YTD PROJECT ANALYTICAL RESULTS
10/27/79

PAGE 26

SAMPLE TYPE BATCH				SAMPLE SITE				GEOLOGICAL DATA	
082510	DG	3912	AG: -0.1 PH: 138	CU: 28 Zn: 58	YUKON BORD EC 06/27/79	1000' SOUTH #1 797/798; QSS (RLT QE & PY DISS & IN ZONES). LAD 115N10.			
						12 IN. B C M N R L N			
082511	DG	3912	AG: -0.1 PH: 116	CU: 30 Zn: 57	YUKON BORD EC 06/27/79	200' NORTH OF #1 797/798; LAD 115N10.			
						12 IN. B C M N R L N			
082512	DG	3912	AG: -0.1 PH: 146	CU: 29 Zn: 62	YUKON BORD EC 06/27/79	@ #1 OF 797/798; SILICIC RHYOLITIC SCH. LAD 115N10			
						12 IN. B C M N R L N			
082513	PG	3912	SH: -10 # : 16	H : 115.0	YUKON BORD EC 06/27/79	31.2 NORTH 14.3 EAST ABNT MAGNETITE & PY (TWO PANS); YUKON 115N/7.			
082514	SG	3912	AG: -0.1 PH: 7 Zn: 49	CU: 25 O : 4.0	YUKON BORD EC 06/27/79	31.2 NORTH 14.3 EAST ABNT BLACK QTZ & FELDS PORPH; GRN SCH W/HYDROTHERMAL (?) EPIDOTE; RHYO LAPILLI SCH W/BLUE QE TO 1/4"; AUGEN GNEISS. YUKON 115N/7.			
						6-9' .5-1' N T L A			

PREPARED BY RESOURCE ASSOC. OF ALASKA

SAMPLE TYPE BATCH

SAMPLE SITE

GEOLOGICAL DATA

082514D SG	3912	AG: -0.1 PH: 6 Zn: 49	CU: 26 U: 4.0	YUKON BORD EC 06/27/79	31.2 NORTH 14.3 EAST ABNT BLACK QTZ & FIELDS PORPH; GRN SCH W/HYDROTHERMAL (?) EPIDOTE; RHYO LAPILLI SCH W/BLUE QZ TO 1/4"; AUGEN GNEISS. YUKON 115N/7.
082515 DG	3911	U: 5.7		6-9' .5-1' N T L A YUKON BORD EC 06/29/79 1500	SAMPLE = 60-70. SOIL IN F TO MEDIUM LITHIFIED TERTIARY ARKOSE (QTZ-FS-MUSC). 115N/9.
082516 RG	3911	AD: -0.1 U: 6.0	TH: 65	101 60 16 IN. B C M B R L N YUKON BORD EC 06/29/79 1500	SPEC SAVED. NEAR BASE OF CGL OF PELLY GNEISS COBBLES & METAGRANODIORITE W/GRN SANDY MATRIX. BIASED FOR MATRIX BETWEEN BOULDERS. 115N/9.
082516D RG	3911	TH: 65		101 100 120 G B M N FT. YUKON BORD EC 06/29/79 1500	SPEC SAVED. NEAR BASE OF CGL OF PELLY GNEISS COBBLES & METAGRANODIORITE W/GRN SANDY MATRIX. BIASED FOR MATRIX BETWEEN BOULDERS. 115N/9.
082517 SG	3911	AG: -0.1 PH: 3 Zn: 73	CU: 18 U: 4.0	101 100 120 G B M N FT. YUKON BORD EC 06/29/79 2270	MARION CREEK @ 100460P GRNSCH; GYSCH; QTZ; FXHALITE (METACARBONATE AFTER MAFIC VOLCS(?) W/COARSE PYRITE. FAIR GARNETS & TRACE MAGNETITE & PYRITE BUT NO GOLD (WATER TOO HIGH?). 115N/8.

6-9' 1-2.' Y T L A

PREPARED BY RESOURCE ASSOC. OF ALASKA

SAMPLE TYPE BATCH				SAMPLE SITE		GEOLOGICAL DATA
082518	PG	3911	SP:	-10	W : 16	YUKON BORD EC 06/29/79 101 50 115. DAWSON CREEK SIDE TRIBUTARY COMING FROM E. FLOOD COULDN'T GET ABOVE MAIN CREEK BOULDERS. MINOR GARNET & MAGNETITE ABUNDANT PORPHYRY AND VOLCANICS.
082519	SG	3911	AG:	0.4	CU: 22	YUKON BORD EC 06/29/79 6-9' 1-2.' Y T L A 115. SAME AS @ 82518P.
			PH:	2	U : 3.6	
			ZG:	80		
082520	PG	3911	SP:	-10	W : 125	YUKON BORD EC 06/29/79 115N/8. DAWSON CREEK E TRIBUTARY +/- 2 MILES ABV 82519. EPDT SKARN W/MALACHITE & PITCH LIMO; AFTER CPY; NE FRAG SCH QSS & QCS; AND VOLC PORPHYRY (HYPABYS-SAL).
082521	SG	3911	AG:	0.1	CU: 22	YUKON BORD EC 06/29/79 2650 @ 82520P. 115N/8.
			PH:	28	U : 3.6	
			ZG:	101		
082522	PG	3911	SP:	-10	W : 5	YUKON BORD EC 06/29/79 2150 6-9' .5-1' Y T L A 115N/7. UPPER RICE CREEK. 101 30

SAMPLE TYPE BATCH				SAMPLE SITE			GEOLOGICAL DATA
082523	SG	3911	AG: -0.1 PH: 3 Zn: 61	CU: 20 H: 4.4	YUKON BORD BH 06/29/79	2150	115N/7. NO DATA.
6-9' .5-1' N C L A							
100452	DG	3899	AG: 0.5 PH: 20	CU: 32 Zn: 69	YUKON BORD BH 06/27/79		HQR = C ALSO. AT 698 697 #1 GSS CHIPS. LAD 115N/10.
12 IN. B C D G C H N							
100453	DG	3899	AG: 0.4 PH: 20	CU: 28 Zn: 80	YUKON BORD BH 06/27/79		LAD 115N/10. 200' N 698. NO FLOAT - NEAR STREAM.
12 IN. B C M G C L N							
100454	DG	3899	AG: 0.4 PH: 21	CU: 36 Zn: 65	YUKON BORD BH 06/27/79		LAD 115N/10. NEAR STREAM. NO FLOAT 400 N. HQR = C ALSO.
8 IN. B C M O C L N							
100455	SG	3899	AG: 0.2 PH: 64	CU: 22 Zn: 125	YUKON BORD BH 06/27/79		LAD 115N/. STREAM AT 600' N 698. GOOD GSS & QTZ. LAPILLT TUFF.
1-3' 0-.5' N T L A							

PREPARED BY RESOURCE ASSOC. OF ALASKA

1979 YTD PROJECT ANALYTICAL RESULTS
10/2/79

PAGE 30

SAMPLE TYPE BATCH

SAMPLE SITE

GEOLOGICAL DATA

100456 DG 3899	AG: 0.7 PH: 189	CU: 45 Zn: 86	YUKON BORD BH 06/27/79	LAD 115N/10. DEPTH = 1-1/2'. +800 N 698. QTZ & QSS IN CHIPS ALL MOSS COVERED.
			1" IN. B C M G C M N	
100457 DG 3899	AG: 0.3 PH: 56	CU: 36 Zn: 54	YUKON BORD BH 06/27/79	LAD 115N/10. COL = GREEN ALSO. + 1000' N 698. CHLOR SCH IN FLOAT.
			1" IN. B C M G C M N	
100458 DG 3899	AG: 0.3 PH: 114	CU: 22 Zn: 49	YUKON BORD	+ 1200' N 698. LAD 115N/10.
100458D DG 3899	AG: 0.2 PH: 110	CU: 21 Zn: 47	YUKON BORD	+ 1200' N 698. LAD 115N/10.
100459 DG 3911	U: 6.0		YUKON BORD BH 06/28/79	HOR = C ALSO. SIZE = C ALSO. 115N/9. IN OVER TURNED TREE TRUNK; NEAR BASE OF CONG. FRAGS PELY GNEISS; GRANODIORITE; GRAN QTZ.
			3" IN. B T D N C L N	

PREPARED BY RESOURCE ASSOC. OF ALASKA

SAMPLE TYPE BATCH				SAMPLE SITE			GEOLOGICAL DATA
100460	PG	3911	SA: -10	8 :	9	YUKON BORD BH 06/29/79 2250	STR WIDTH = 3-6 ALSO. SIZE = C ALSO. STR SITUS = A ALSO. MARION CREEK. 115N/8 @ 825178 - MAGIC SCH W/PY.
100461	SG	3911	AG: -0.1	CU: 19		YUKON BORD BH 06/29/79	SIZE = C ALSO. 115N/8. MAIN FORK DANSON CREEK MAINLY TERT VOLC; SHALES; & CONG W/40% SCH (KLONDIKE).
			PH: 21	U: 4.4			
			ZS: 86				
						3-6' 0-.5' N I L A	
100462	PG	3911	SA: -20	9 :	16	YUKON BORD BH 06/29/79 2480	115N/8. ONE SMALL PIECE OF GOLD IN PAN. FOUND ONE PIECE GOLD IN HOLE IN BOULDER QTZ CEMENTED BX.
100463	RG	3911	AG: -0.1			YUKON BORD BH 06/29/79 2480	SPEC SAVED. 115N/8. FLOAT OF QTZ CEMENTED VOLC BX SEVERAL OTHER PIECES IN STREAM.
						G F N O FT.	
100464	PG	3911	SA: -10	9 :	8	YUKON BORD BH 06/29/79	SIDE STREAM - MAINLY SCH W/META VOLC & SEDS. MINOR TERTIARY VOLC & NO SEDS. ONE PIECE OF QTZ BX. NO GOLD. 115N/8.

SAMPLE TYPE BATCH

SAMPLE SITE

GEOLOGICAL DATA

100465 SG 3911 AG: -0.1 CU: 21 YUKON BORD SIZE = C ALSO. 1154/8. @ 464P.
 PR: 30 U: 4.4 RR: 06/29/79 2650
 ZI: 98

3-6' 0-.5' N T L A

1004650 SG 3911 AG: -0.1 CU: 25 YUKON BORD SIZE = C ALSO. 1154/8. @ 464P.
 PR: 31 U: 4.4 RR: 06/29/79 2650
 ZI: 105

3-6' 0-.5' N T L A

PREPARED BY RESOURCE ASSOC. OF ALASKA

INVOICES

PROJECT
YTS 235 JED1
FIELD NUMBER 6720

7/20/79

CHARGES

DATA BATCH: 33920

SAMPLE PREP CHARGES:	10.00 @ \$0.75	\$	7.50
BA 10 GEOCHEMS		\$	34.50
			<hr/>
BATCH TOTAL		\$	42.00

DATA BATCH: 3392A

SAMPLE PREP CHARGES:	26.00 @ \$0.75	2.00 @ \$1.50	\$	22.50
CU 16 GEOCHEMS			\$	28.00
PB 16 GEOCHEMS			\$	32.00
ZR 16 GEOCHEMS			\$	26.00
AG 15 GEOCHEMS			\$	30.00
AD 3 GEOCHEMS			\$	10.50
W 20 GEOCHEMS			\$	90.00
				<hr/>
BATCH TOTAL		\$	241.00	

DATA BATCH: 3392B

SAMPLE PREP CHARGES:			\$	0.00
SN 14 GEOCHEMS			\$	63.00
U 12 GEOCHEMS			\$	66.00
				<hr/>
BATCH TOTAL		\$	129.00	

DATA BATCH: 3392A

SAMPLE PREP CHARGES:	24.00 @ \$0.75		\$	18.00
CU 24 GEOCHEMS			\$	42.00
PB 24 GEOCHEMS			\$	48.00
ZR 24 GEOCHEMS			\$	42.00
AG 24 GEOCHEMS			\$	48.00
				<hr/>
BATCH TOTAL		\$	198.00	

PREPARED BY RESOURCE ASSOC. OF ALASKA

7/20/79

CHARGES

✓ DATA BATCH: 3897A

SAMPLE PREP CHARGE:	6.00 @ \$0.75	\$	4.50
CU	6 GEGCHENS	\$	10.50
PB	6 GEGCHENS	\$	12.00
ZN	6 GEGCHENS	\$	10.50
AG	6 GEGCHENS	\$	12.00
BATCH TOTAL			\$ 49.50

✓ DATA BATCH: 3898A

SAMPLE PREP CHARGE:	27.00 @ \$0.75	\$	20.25
CU	27 GEGCHENS	\$	47.25
PB	27 GEGCHENS	\$	54.00
ZN	27 GEGCHENS	\$	47.25
AG	27 GEGCHENS	\$	54.00
BATCH TOTAL			\$ 222.75

PREPARED BY RESOURCE ASSESS. OF ALASKA

YIP, ROBERT
 COLLEGE THROUGH 07/20/75

7/20/75

CHARGES

✓ DATA BATCH 38996

SAMPLE PREP CHARGE:	7.00	\$40.75	\$	5.25
CU 7	GEDCHENS		\$	12.25
PS 7	GEDCHENS		\$	14.00
ZR 7	GEDCHENS		\$	12.25
AG 7	GEDCHENS		\$	14.00
BATCH TOTAL				\$ 57.75

DATA BATCH 3907A

SAMPLE PREP CHARGE:	21.00	\$60.75	1.00	\$1.50	\$	17.25
CU 4	GEDCHENS				\$	7.00
PS 4	GEDCHENS				\$	8.00
ZR 4	GEDCHENS				\$	7.00
AG 4	GEDCHENS				\$	8.00
SM 22	GEDCHENS				\$	99.00
U 22	GEDCHENS				\$	121.00
BATCH TOTAL						\$ 267.25

DATA BATCH 3910A

SAMPLE PREP CHARGE:	8.00	\$10.75	3.00	\$1.50	\$	10.50
CU 10	GEDCHENS				\$	17.50
PS 3	GEDCHENS				\$	16.00
ZR 8	GEDCHENS				\$	14.00
AG 7	GEDCHENS				\$	14.00
AM 3	GEDCHENS				\$	10.50
U 3	GEDCHENS				\$	22.50
BATCH TOTAL						\$ 105.00

PREPARED BY RESOURCE AGENCY OF ALASKA

YOUTH PROJECT
 FILED THROUGH 07/20/79

7/20/79

CHARGES

DATA BATCH: 39120

SAMPLE PREP CHARGE:	16.00 @ 0.75	\$	12.00
SN 17	GEOCHEM	\$	55.00
J 27	GEOCHEM	\$	148.50
BATCH TOTAL			\$ 223.50

✓ DATA BATCH: 39124

SAMPLE PREP CHARGE:	14.00 @ 0.75	\$	10.50
CU 13	GEOCHEM	\$	22.75
PB 13	GEOCHEM	\$	26.00
ZN 13	GEOCHEM	\$	22.75
AG 13	GEOCHEM	\$	26.00
W 1	GEOCHEM	\$	4.50
SN 1	GEOCHEM	\$	4.50
BATCH TOTAL			\$ 117.00

✓ DATA BATCH: 39128

SAMPLE PREP CHARGE:		\$	0.00
U 2	GEOCHEM	\$	11.00
BATCH TOTAL			\$ 11.00

DATA BATCH: 39144

SAMPLE PREP CHARGE:	24.00 @ 0.75	1.00 @ 0.50	\$	21.00
CU 4	GEOCHEM	\$	7.00	
PB 4	GEOCHEM	\$	8.00	
ZN 4	GEOCHEM	\$	7.00	
AG 4	GEOCHEM	\$	8.00	
AD 2	GEOCHEM	\$	7.00	
W 24	GEOCHEM	\$	117.00	
BATCH TOTAL			\$ 173.00	

PREPARED BY RESOURCE ASSOC. OF ALASKA

INVOICE
YTU PROJECT
BILLED THROUGH 08/10/79

PAGE 21

8/13/79

DATA BATCH: 3891A

CHARGES

SAMPLE PREP CHARGE:		8.00 @ \$0.75	\$	6.00
CU	6	GEOCHEMS	\$	10.50
PB	6	GEOCHEMS	\$	12.00
ZN	6	GEOCHEMS	\$	10.50
AG	6	GEOCHEMS	\$	12.00
SN	2	GEOCHEMS	\$	9.00
W	2	GEOCHEMS	\$	9.00

DATA BATCH TOTAL\$ 69.00

DATA BATCH: 3891B

SAMPLE PREP CHARGE:			\$	0.00
U	2	GEOCHEMS	\$	11.00
NI	2	GEOCHEMS	\$	4.00
BA	1	GEOCHEMS	\$	3.45

DATA BATCH TOTAL\$ 18.45

DATA BATCH: 3893A

SAMPLE PREP CHARGE:		23.00 @ \$0.75	4.00 @ \$1.50	\$	23.25
CU	24	GEOCHEMS	\$	42.00	
PB	24	GEOCHEMS	\$	48.00	
ZN	24	GEOCHEMS	\$	42.00	
AG	24	GEOCHEMS	\$	48.00	
AU	3	GEOCHEMS	\$	10.50	
W	4	GEOCHEMS	\$	18.00	

DATA BATCH TOTAL\$ 231.75

DATA BATCH: 3896A

SAMPLE PREP CHARGE:		27.00 @ \$0.75	\$	20.25
CU	24	GEOCHEMS	\$	42.00
PB	24	GEOCHEMS	\$	48.00
ZN	24	GEOCHEMS	\$	42.00
AG	24	GEOCHEMS	\$	48.00
U	6	GEOCHEMS	\$	33.00
W	7	GEOCHEMS	\$	31.50

DATA BATCH TOTAL\$ 264.75

PREPARED BY RESOURCE ASSOC. OF ALASKA

INVOICE
 YTU PROJECT
 BILLED THROUGH 08/10/79

8/13/79

CHARGES

DATA BATCH: 3896B

SAMPLE PREP CHARGE:		\$	0.00
SN 7 GEOCHEMS		\$	31.50

DATA BATCH TOTAL\$ 31.50

DATA BATCH: 3904A

SAMPLE PREP CHARGE:	6.00 @ \$0.75	\$	4.50
BA 6 GEOCHEMS		\$	20.70

DATA BATCH TOTAL\$ 25.20

DATA BATCH: 3904B

SAMPLE PREP CHARGE:	14.00 @ \$0.75	\$	10.50
BA 14 GEOCHEMS		\$	48.30

DATA BATCH TOTAL\$ 58.80

DATA BATCH: 3904C

SAMPLE PREP CHARGE:	6.00 @ \$0.75	\$	4.50
BA 6 GEOCHEMS		\$	20.70

DATA BATCH TOTAL\$ 25.20

DATA BATCH: 3905B

SAMPLE PREP CHARGE:	4.00 @ \$0.75	\$	3.00
BA 4 GEOCHEMS		\$	13.80

DATA BATCH TOTAL\$ 16.80

DATA BATCH: 3906A

SAMPLE PREP CHARGE:	9.00 @ \$0.75	\$	6.75
BA 9 GEOCHEMS		\$	31.05

DATA BATCH TOTAL\$ 37.80

PREPARED BY RESOURCE ASSOC. OF ALASKA

INVOICE
YTU PROJECT
BILLED THROUGH 08/22/79

PAGE 1

8/23/79

CHARGES

✓ TA BATCH: 3893B

SAMPLE PREP CHARGE:		\$	0.00
SN 5 GEOCHEMS		\$	22.50
U 2 GEOCHEMS		\$	11.00

DATA BATCH TOTAL\$ 33.50

DATA BATCH: 3895A

SAMPLE PREP CHARGE:	9.00 @ \$0.75	3.00 @ \$1.50	\$	11.25
CU 7 GEOCHEMS			\$	12.25
FB 7 GEOCHEMS			\$	14.00
ZN 7 GEOCHEMS			\$	12.25
AG 7 GEOCHEMS			\$	14.00
W 12 GEOCHEMS			\$	54.00
SN 1 GEOCHEMS			\$	4.50

DATA BATCH TOTAL\$ 122.25

DATA BATCH: 3905A

SAMPLE PREP CHARGE:	15.00 @ \$0.75		\$	11.25
BA 15 GEOCHEMS			\$	51.75

DATA BATCH TOTAL\$ 63.00

DATA BATCH: 3909B

SAMPLE PREP CHARGE:		\$	0.00
CU 1 GEOCHEMS		\$	1.75
FB 1 GEOCHEMS		\$	2.00
ZN 1 GEOCHEMS		\$	1.75
AG 1 GEOCHEMS		\$	2.00

DATA BATCH TOTAL\$ 7.50

PREPARED BY RESOURCE ASSOC. OF ALASKA

INVOICE
1979 YTU PROJECT ANALYTICAL RESULTS
BILLED THROUGH 09/21/79

CHARGES

DATA BATCH: 3911A

SAMPLE PREP CHARGE:	8.00 @ \$0.75	2.00 @ \$1.50	\$	9.00
CU	6	GEOCHEMS	\$	10.50
PB	6	GEOCHEMS	\$	12.00
ZN	6	GEOCHEMS	\$	10.50
AG	6	GEOCHEMS	\$	12.00
AU	2	GEOCHEMS	\$	7.00
U	9	GEOCHEMS	\$	49.50

DATA BATCH TOTAL \$ 110.50

DATA BATCH: 3911B

SAMPLE PREP CHARGE:	6.00 @ \$0.75		\$	4.50
W	6	GEOCHEMS	\$	27.00
SN	6	GEOCHEMS	\$	27.00
TH	1	GEOCHEMS	\$	4.37

DATA BATCH TOTAL \$ 62.87

DATA BATCH: 3918A

SAMPLE PREP CHARGE:	18.00 @ \$0.75	2.00 @ \$1.50	\$	16.50
BA	20	GEOCHEMS	\$	69.00

DATA BATCH TOTAL \$ 85.50

DATA BATCH: 3919A

SAMPLE PREP CHARGE:	5.00 @ \$0.75	2.00 @ \$1.50	\$	6.75
BA	8	GEOCHEMS	\$	27.60

DATA BATCH TOTAL \$ 34.35

DATA BATCH: 3954A

SAMPLE PREP CHARGE:			\$	0.00
CU	1	GEOCHEMS	\$	1.75
PB	1	GEOCHEMS	\$	2.00
ZN	1	GEOCHEMS	\$	1.75
AG	1	GEOCHEMS	\$	2.00

DATA BATCH TOTAL \$ 7.50

PREPARED BY RESOURCE ASSOCIATES OF ALASKA

HUGHES 500
CESSNA 316 JC
Box 80006
College, Alaska 99708

No. JC - 0708'

Date 6-26-79 Pilot CURRY

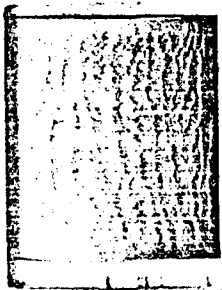
No.	Dpt.	Time	Arr.	Time	Flight Time
1.	<u>7:30</u>	<u>Boundary</u>	<u>19:45</u>	<u>Boundary</u>	<u>1.5</u>
2.					
3.					
4.					
5.					
6.					
7.					

Passengers: <u>Barry</u> <u>Chip</u>	Client: <u>YTU / MAT</u>	Total Flight Time <u>1.5</u>
--	-----------------------------	---------------------------------

Remarks:

Cargo:
PACKS

[Signature]
Signature



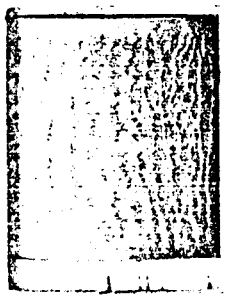
Hughes 500D
CESSNA 316-JC
Box 80006
College, Alaska 99708

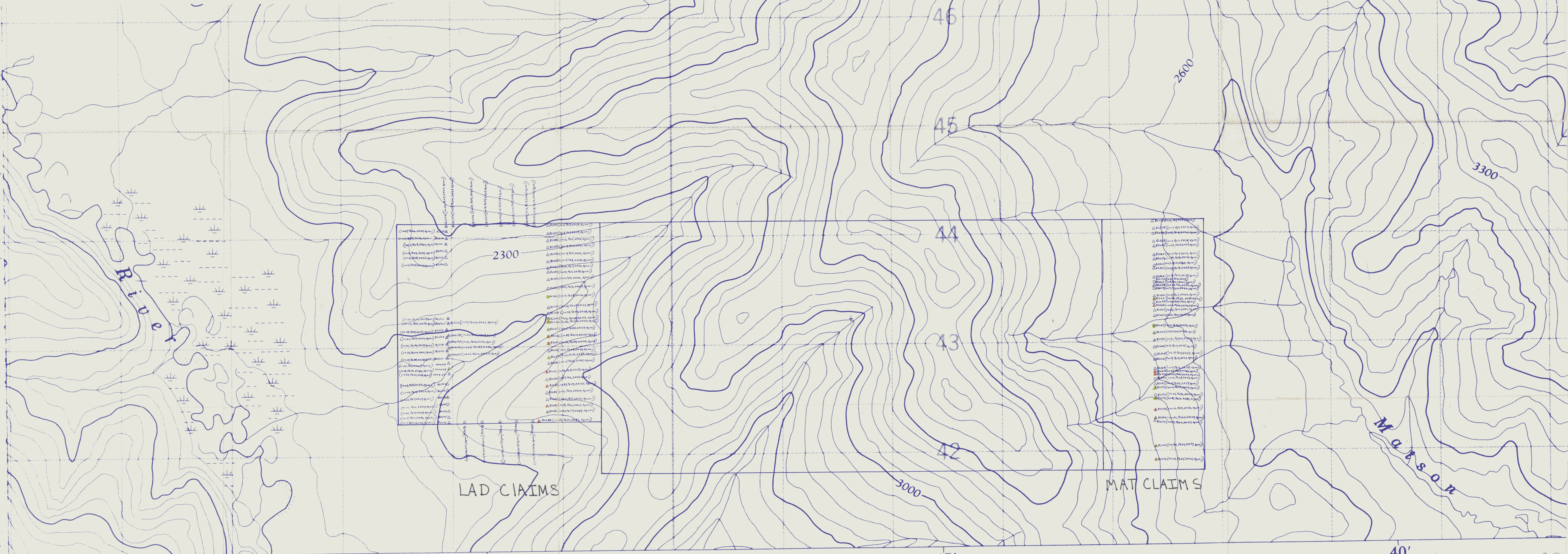
No. JC - 0709

Date	Pilot					
6-27-79	Curry					
1. Dpt. Roundey	Time 7:30	Arr. Roundey	Time 19:30	Flight Time	1.6	
2. Dpt.	Time	Arr.	Time	Flight Time		
3. Dpt.	Time	Arr.	Time	Flight Time		
4. Dpt.	Time	Arr.	Time	Flight Time		
5. Dpt.	Time	Arr.	Time	Flight Time		
6. Dpt.	Time	Arr.	Time	Flight Time		
7. Dpt.	Time	Arr.	Time	Flight Time		

Passengers: Barry Chipp	Client: YTU / Lad	Total Flight Time 1.6
Remarks:		
Cargo: 2 Packs		

Curry
Signature





55' 05 06 07 08 09 10 11 12 13 14 15 16 17 18
 40' 41' 42' 43' 44' 45' 46'
 Joins 115 N/7

Explanation of Symbols

△ soil	█ N 50 ppm Cu	↑ N Scale 1" = 1000'
□ Rock	█ N 50 ppm Pb	
○ Silt	█ N 80 ppm Zn	
	█ N 0.2 ppm Ag	
	█ N 0.1 ppm Au	

Resource Associates of Alaska, Inc. 25 Sept 97 d11

BORDEN CREEK