

Report of Investigations
on the
Hydra Creek Prospect
COM Nos. 54-59, (YA35745-YA35750)
Cabin Creek Area
Watson Lake Mining Division
Yukon Territory

090525

K. G. Lintott, P. Geol.
November, 1979



This report has been examined by the Geological Evaluation Unit and is recommended to the Commissioner to be considered as representation work in the amount of \$ 400.00

J. a. Morin
 Resident Geologist or
 Resident Mining Engineer

Considered as representation work under Section 53 (4) Yukon Quartz Mining Act.

B. R. Baxter
 B. R. BAXTER
 Supervising Mining Recorder

Commissioner of Yukon Territory

070292
 K. G. Lintoff, P. Geol.
 November, 1979

T A B L E O F C O N T E N T S

	<u>PAGE</u>
Introduction	3
General Description of the Claims Area	3
Geology	4
Description of Mineralized Occurrences and Conclusions	4
Statement of Costs.	4

L I S T O F I L L U S T R A T I O N S

Plate No. 1	Location Map	1
Plate No. 2	Claims Location and traverse map.	2

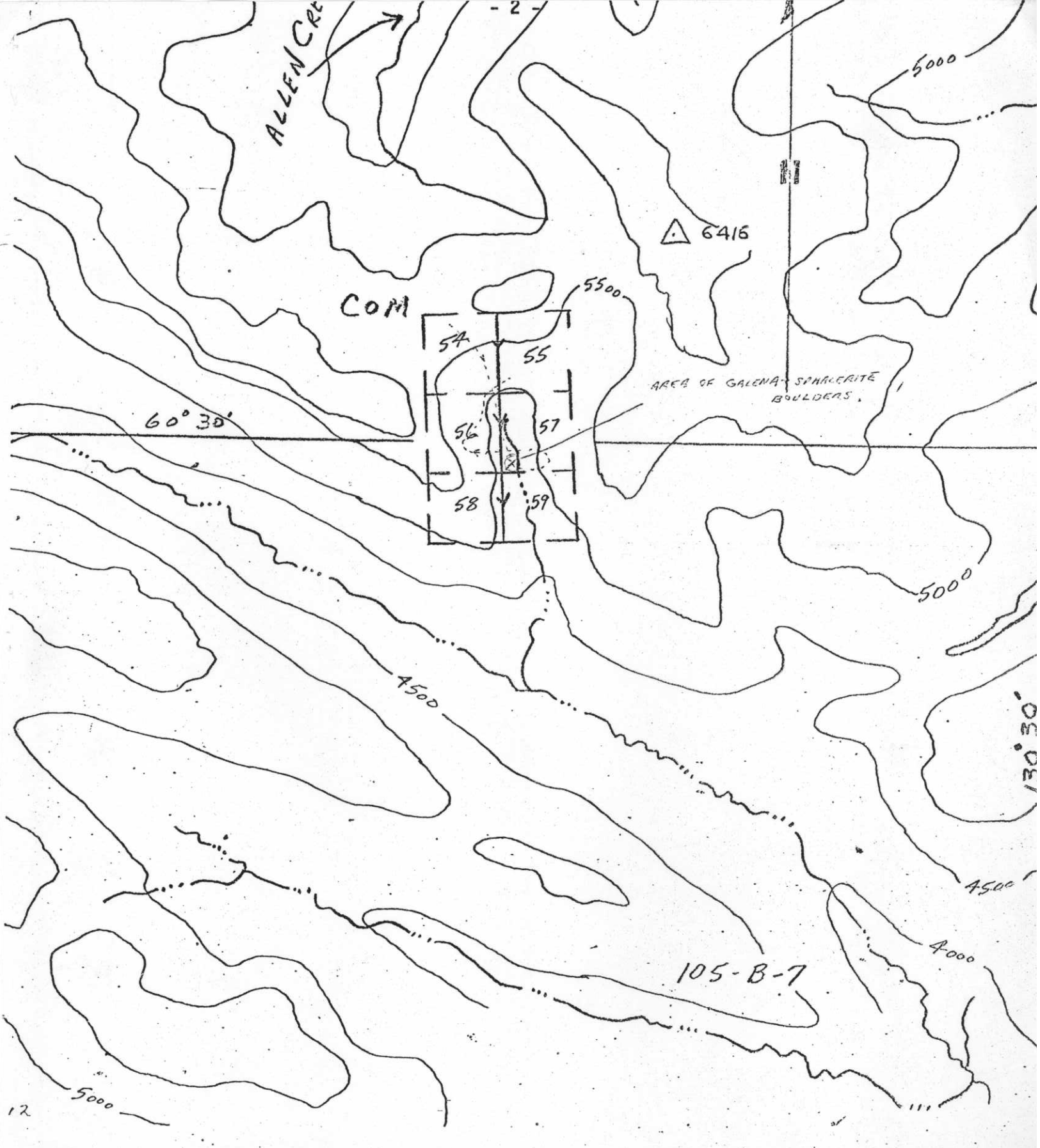


Plate No. 2

COM #54-59 Claims
Claims location and mineralized occurrence
Scale: 1 inch = 1/2 mile

----- Traverse

INTRODUCTION

The writer accompanied by W. Fisher, prospector, spent ½ day (July 8, 1979) prospecting and examining a galena-sphalerite occurrence immediately adjacent to the common posts of the COM #56-59 mineral claims. The property had been acquired as a result of a prospector reporting the mineralized float along Hydra Creek. Operations on this property were part of a program of examining a number of prospects by the combined efforts of Comaplex Resources International Ltd. and Dayton Creek Silver Mines Ltd. Transportation to and from the property was by helicopter.

GENERAL DESCRIPTION OF THE CLAIMS AREA

The prospect area presently consists of six mineral claims, COM Nos. 54-59 inclusive (YA 35745-YA 35750) located in N.T.S. 105-B-7, approximately 36 miles east of Wolfe Lake and 70 miles west-northwest of Watson Lake in the Watson Lake Mining Division. The claims are presently registered in the name of G. Toovey of Carstairs, Alberta.

The property is situated at an elevation of 5000' A.S.L. and straddles Hydra Creek. Treeline is at approximately 5500' with dense small evergreens and bushes dominant along the Creek. Outcrop along the creek is less than 5% with up to 25% outcrop along the adjacent slopes.

Access to the property is by helicopter.

GEOLOGY

The area was mapped at a scale of 1 inch equals four miles by Poole et al., 1960, G.S.C. Map 10-1960 which indicated the claims area as being underlain by Cambrian and (?) earlier meta-sediments. However, the only rock types seen on the property were intrusive muscovite-granite with very minor inclusions of meta-sediments.

DESCRIPTION OF MINERALIZED OCCURRENCES AND CONCLUSIONS

Mineralization was only noted in several angular to sub rounded boulders approximately 1'x2'x2' in size. The mineralization consists of massive sphalerite and galena in a fragmented muscovite granite. This type of mineralization is typical of the area and it is very doubtful whether significant reserves could be developed.

STATEMENT OF COSTS

Since this program was part of a larger project carried out in this general area, a number of expenses have been prorated.

1. Services		
K. Lintott, P. Geol.	½ day @ \$250/day	\$125.00
W. Fisher	½ day @ \$ 75/day	37.50
2. Helicopter		340.67
3. Motel		15.00
4. Meals		15.00
5. Preparation of Report, K. Lintott	½ day	125.00
6. Transportation		
Calgary-Watson Lake and Return - 2 persons:		
1/4 of \$540.00		135.00
U-Drive 2/15 of \$435.82		58.11
	TOTAL	<u>\$851.28</u>

K.G. Lintott, P. Geol.
November 6, 1979

C E R T I F I C A T E

I, KENNETH G. LINTOTT, of the City of Calgary, in the Province of Alberta, certify as follows:

1. That I am a geologist residing at 11107 Braxton Road S.W., Calgary, Alberta.
2. That I have practiced my profession continuously since being graduated in Geology from the University of Alberta, Edmonton Campus, in the Province of Alberta, B.Sc., 1970.
3. That I am registered as a Professional Geologist in the Province of Alberta.
4. That I own shares of Comaplex Resources International Ltd., on whose behalf this report is written.
5. That I have continuously worked in geological and mining exploration in Canada and the United States for the past nine years and that the accompanying report is based on a one half day field investigation and a study of published reports.

DATED AT CALGARY, ALBERTA, THIS 26th DAY OF NOVEMBER, A.D., 1979.

Kenneth G. Lintott, B.Sc., P. Geol.