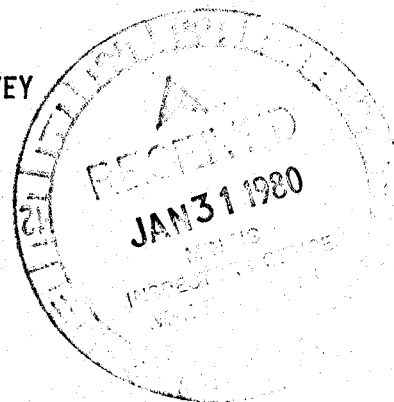




REPORT
ON THE
1979 GEOLOGICAL AND GEOCHEMICAL SURVEY
ON THE
KENNY MINERAL CLAIM
KENO HILL AREA
MAYO MINING DISTRICT
105-M-14



Latitude 63⁰ 56' N
Longitude 135⁰ 15' W

United Keno Hill Mines Ltd.
T.J. Levicki
Exploration Geologist

January 10, 1980

090513

Representation Work
\$ 500.00

J A Mann

R Geologist Office

B. R. BAXTER

Supervising Mining Recorder

Approved
FOR COMMISSIONER

TABLE OF CONTENTS

	<u>PAGE</u>
Location and Access	2
General Geology	2
Previous Work	2
1979 Geochemical Survey	3
Sample Analysis	3
Results	3
Conclusions, Recommendations	4
Statement of Expenditures	6
Affidavit	7

MAPS:

SCALE:

FIGURE 1: Location of Kenny M.C.	1" = ½ mi
FIGURE 2: Location and Geochemical Grid-Kenny M.C.	1" = 400'
FIGURE 3: General Geology	1" = 400'
FIGURE 4: Soil Sampling - Silver Plot	1" = 100'
FIGURE 5: Soil Sampling - Lead Plot	1" = 100'
FIGURE 6: Soil Sampling - Zinc Plot	1" = 100'

LOCATION AND ACCESS:

The Kenny Mineral Claim is located on the upper southwest slope of Keno Hill, and adjoins the Lizzie claim on the east, and the Whist, Sorb, and Lyle claims of the Bankeno group, on the southwest.

The Kenny M.C. is a restaking of the former "IT" claim owned by O. Hutton and previous to that the "Artus" claim held by Bankeno Mines.

Access to the claim is via the "Signpost Road" on Keno Hill.

GENERAL GEOLOGY:

Rocks in the area of the Kenny claim consist of a series of meta-sediments, uppermost of which is the Central Quartzite formation thought to be lower Cretaceous, and underlain by interbedded sericite and graphite schists believed to be of Jurassic age. These units strike north westerly and dip gently to the south.

A major crossfault projects across the claim and could have a displacement of up to 400 feet. Crossfaults have been found to be important controlling factors in the deposition of silver-lead-zinc mineralization in the Galena - Keno Hill areas.

PREVIOUS WORK:

The claim has had considerable surface exploration including trenching and a geochemical and geophysical survey by U.K.H.M. Ltd. in 1965 under option from Bankeno Mines.

The Ronka Electromagnetic Survey showed some weak conductors but they were in the schist horizon and lying in a bedding direction. No conductors were picked up in the quartzite formation.

The soil sampling program produced some weak lead and zinc anomalies scattered throughout the claim.

Three trenches were cut on the claim in 1965 but only one trench showed signs of vein material. Three samples from this trench assayed:

- (a) 0.6 oz Ag, 4.88% Pb, 1.6% Zn
- (b) 2.0 oz Ag, 0.63% Pb, 0.2% Zn
- (c) 1.2 oz Ag, 1.12% Pb, 0.1% Zn

1979 GEOCHEMICAL SURVEY:

A 100 foot x 100 foot geochemical survey grid was established over the most favorable part of the claim and a total of 176 soil samples were taken. Samples were obtained with a grubhoe from the 'B' soil horizon. The area is covered by generally well-developed residual soils and geochemical response was quite good.

Several anomalies were resampled at 50 foot spacing.

SAMPLE ANALYSIS:

Soil sample analysis was carried out at the Elsa Assay Laboratory under the direction of Mr. Victor Rafuse, Chief Chemist for United Keno Hill Mines Ltd.

The samples were dried and screened through a -80 mesh standard nylon screen. 1.00 grams of the -80 mesh material was digested in a solution of HNO₃ and HCl (aqua regia) for a minimum of 8 hours under heat lamps. After cooling, the samples were brought up to a 20 ml volume with deionized water and were analyzed for silver, lead and zinc by a Perkin Elmer 303 atomic absorption - spectrophotometer. Results were obtained in parts per million.

RESULTS:

Geochemical results for silver, lead and zinc are plotted in parts per million on figures 4, 5 and 6 respectively. The silver and lead plots show very closely coincident anomalies, but the zinc plot shows wider dispersion due to the greater mobility of the metal in the geochemical environment. Three main anomalies are designated A, B and C on the maps and are discussed briefly below.

Anomaly A: This is a small isolated silver-lead anomaly with values of 28.4 ppm and 419 ppm respectively. There was no corresponding zinc anomaly. Resampling on 50 foot spacing failed to confirm these values.

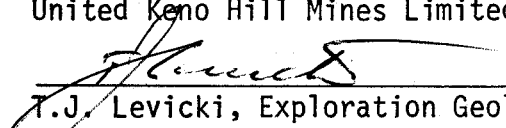
Anomaly B: Anomaly B is a strong isolated anomaly with all three metals showing corresponding high values of up to 99 ppm Ag (2.37 oz/ton) 1870 ppm Pb (0.2%) and 652 ppm Zn (0.08%). Follow-up sampling at 50 foot spacing produced a halo of weaker values.

Anomaly C: This is a strong widespread anomaly for all three metals and may be open to the northeast. Zinc shows more dispersion than the lead and silver plots which are very similar. This anomaly may represent the SW projection of the Keno No. 6 Vein.

CONCLUSIONS AND RECOMMENDATIONS:

1. The geochemical soil sampling program on the Kenny claim located three strong coincident silver - lead anomalies with values of up to 99 ppm Ag and 1870 ppm Pb. Several weaker anomalies are scattered throughout the claim.
2. The two most significant anomalies could be correlated with the southwest projection of the Keno No. 6 Vein which has been traced by percussion drilling as far as the Lorne claim 2200 feet northeast.
3. A major cross-fault projects across the claim and it is interesting to note the close association of the soil anomalies relative to the fault.
4. It is recommended that a program of percussion drilling be carried out on the Kenny and adjoining Lizzie claims to test these soil anomalies at depth.

Respectfully Submitted
United Keno Hill Mines Limited


T.J. Levicki, Exploration Geologist

Geochemical Sampling by
Ray Donaleshen
Geological Assistant

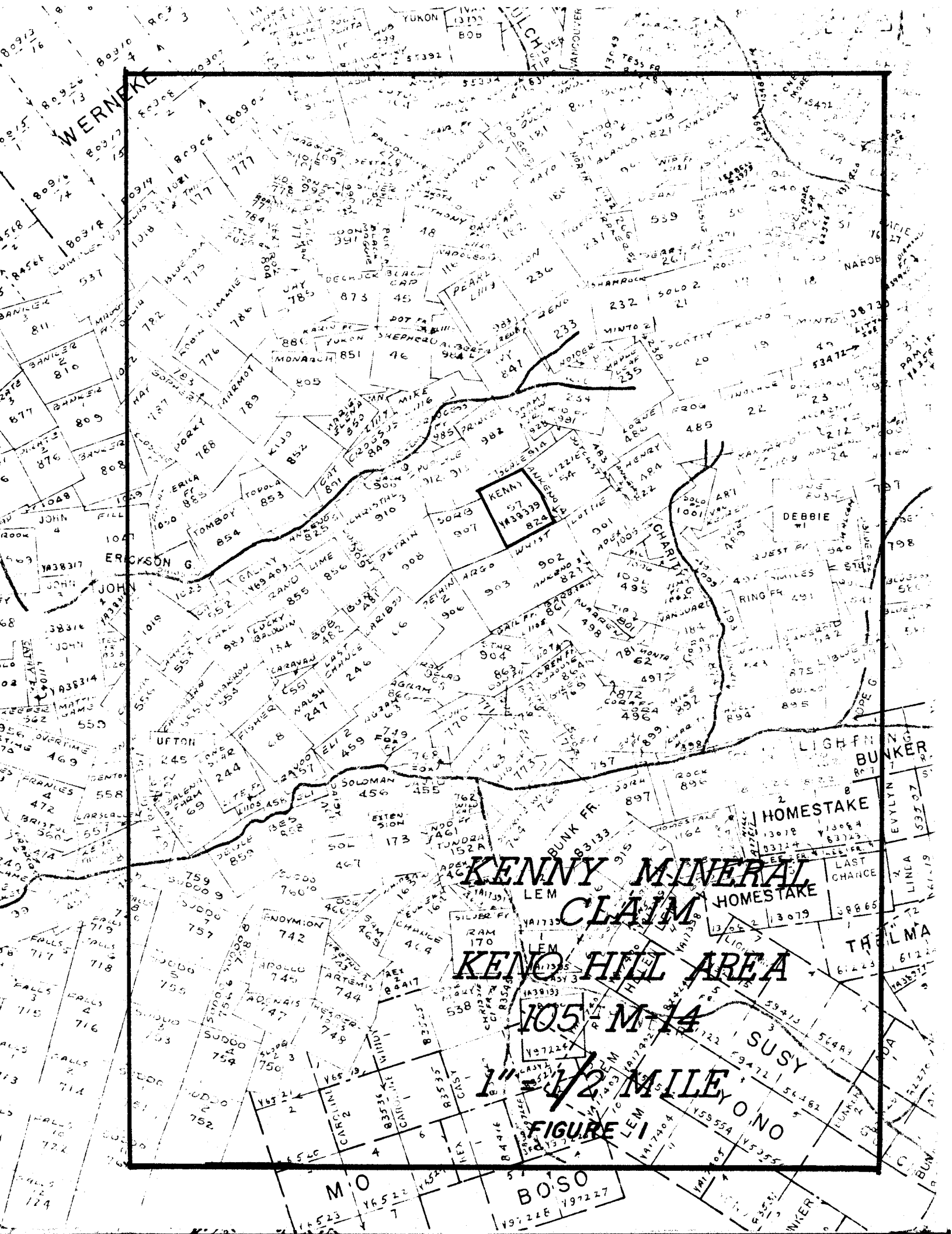
Analysis by
Victor Rafuse
Chief Chemist

Supervised by
T.J. Levicki
Exploration Geologist

REFERENCES:

- (a) Geology, Geochemistry and Origin of the Pb-Zn-Ag Deposits
of the Keno Hill - Galena Hill Area
by R.W. Boyle Bulletin III

- (b) Report on the Bankeno Mineral Claims, Keno Hill
by R.E. Van Tassell December 1965



WERNEKE

KENNY MINERAL CLAIM

KENDY HILL AREA

105 M-14

1 1/2 MILE FIGURE 1

SUSY

ONO

M O

BOSO

HOMESTAKE

HOMESTAKE

THEILMA

ERICKSON G

KENNY

DEBBIE

LIGHTNING BUNKER

UFTON

EXTENSION

BUNK FR

FALLS

FALLS

FALLS

FALLS

FALLS

FALLS

ENDYMION

APOLLO

ADONAI

SUDDO

SUDDO

SUDDO

ARTEMIS

ARTEMIS

ARTEMIS

ARTEMIS

ARTEMIS

ARTEMIS

CHANCE

CHANCE

CHANCE

CHANCE

CHANCE

CHANCE

SILVER

RAM

RAM

RAM

RAM

RAM

RAM

RAM

RAM

RAM

RAM

RAM

RAM

RAM

RAM

RAM

RAM

RAM

RAM

RAM

RAM

RAM

RAM

RAM

RAM

RAM

RAM

RAM

RAM

RAM

RAM

RAM

RAM

RAM

RAM

RAM

RAM

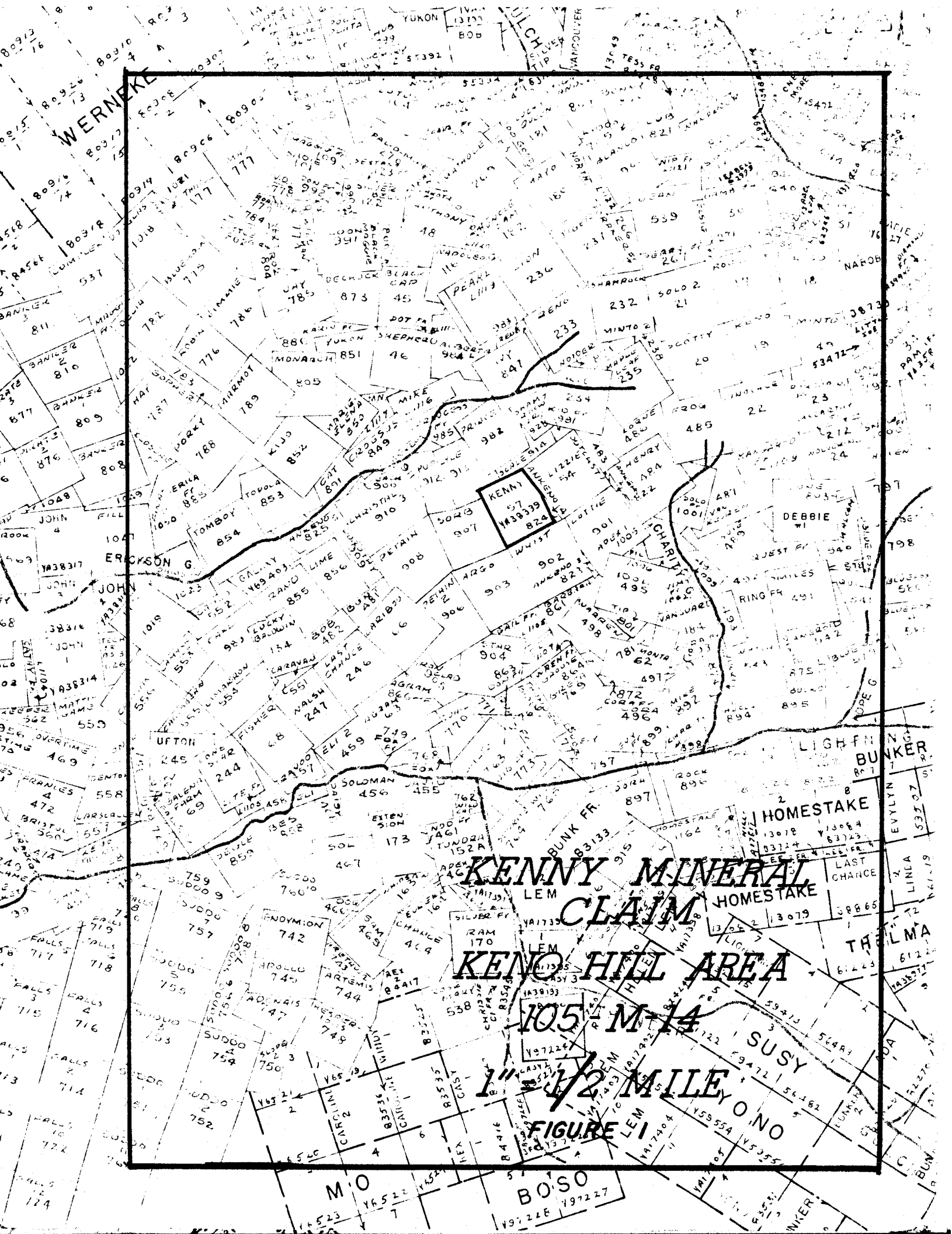
RAM

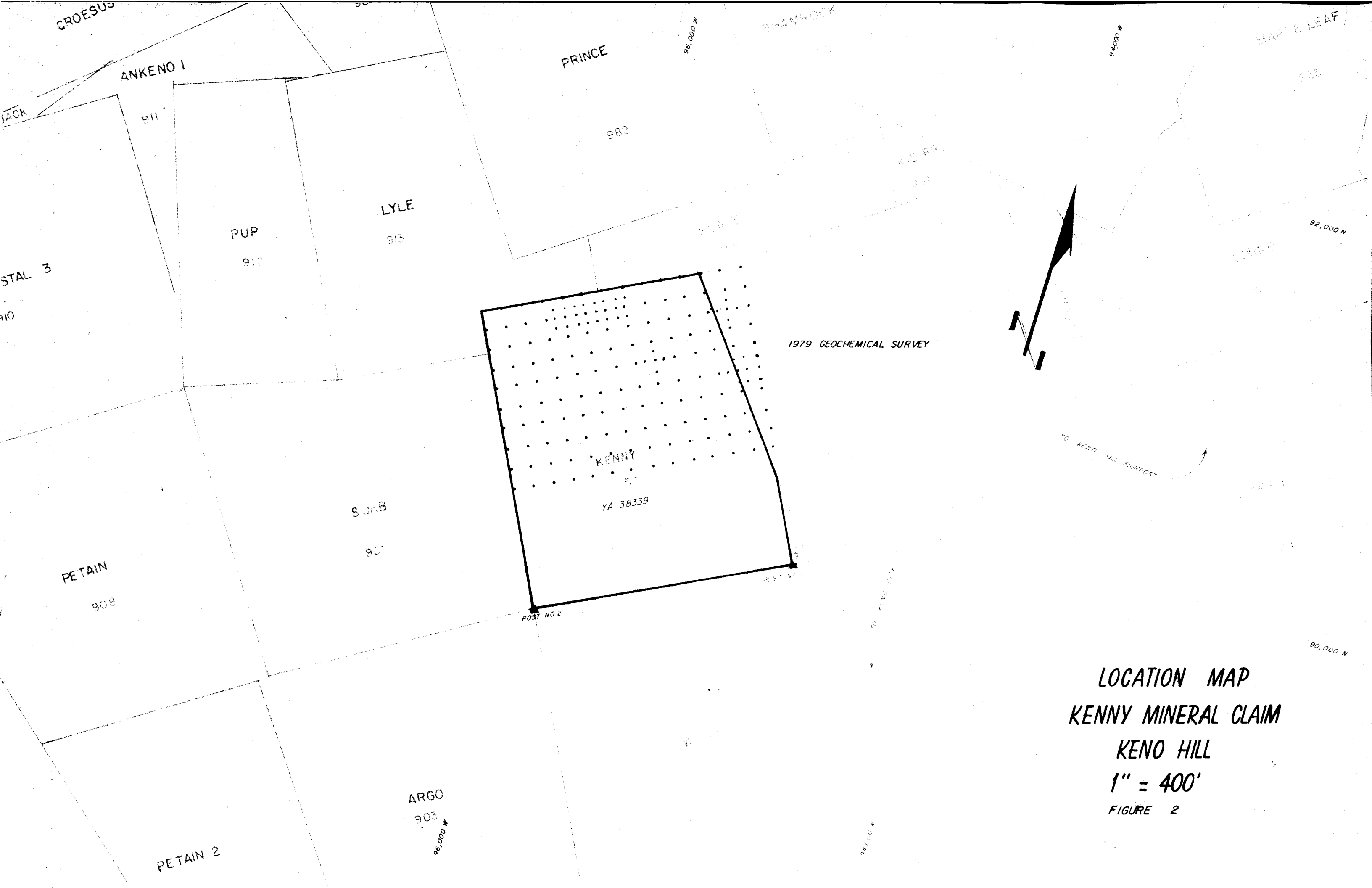
RAM

RAM

RAM

RAM





CROESUS

ANKENO I

PRINCE

SHAMROCK

MAPLE LEAF

JACK

911'

982

LYLE

913

PUP

912

STAL 3

910

1979 GEOCHEMICAL SURVEY

KENNY

ST

YA 38339

SUBB

907

PETAIN

909

TO KENG HILL SIGNPOST

TO KENO CITY

90,000 N

LOCATION MAP
KENNY MINERAL CLAIM

KENO HILL

1" = 400'

FIGURE 2

ARGO

903

96,000 N

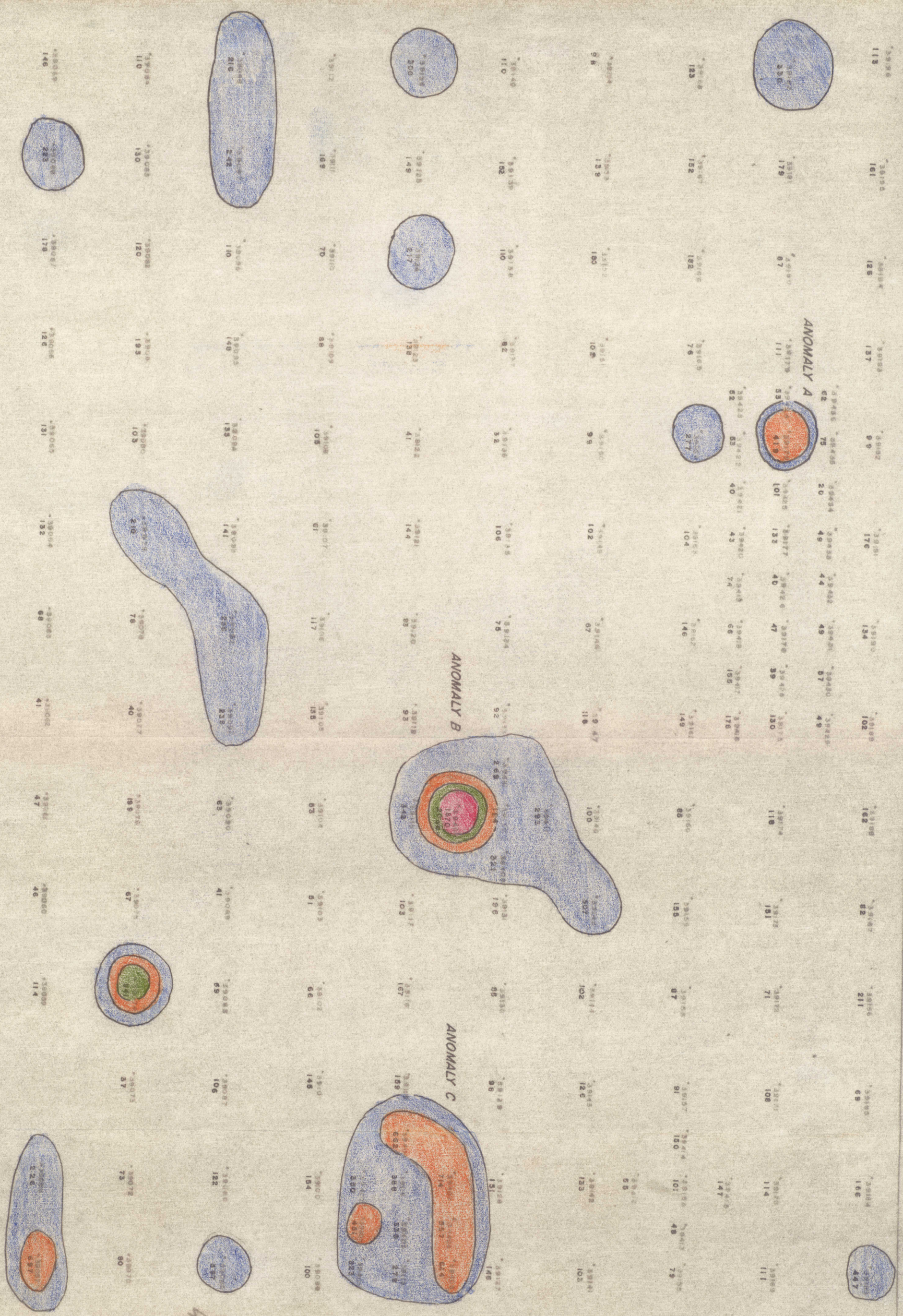
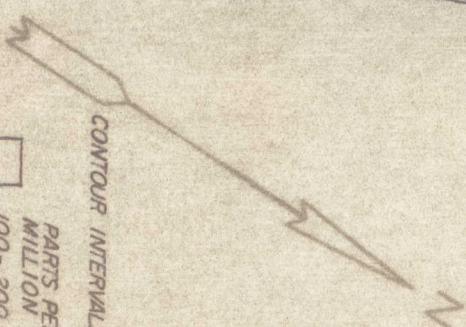
PETAIN 2

**KENNY CLAIM
LEAD PLOT** PARTS PER MILLION

UNITED KENO HILL MINES LTD.

BY	DATE	SCALE 1"=100'
DRAWN	R.D.	05/07/59

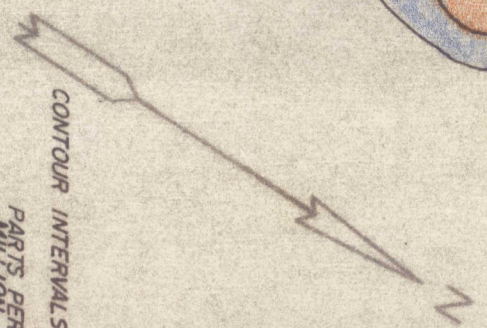
FIGURE 5



**KENNY CLAIM
ZINC PLOT** PARTS PER MILLION

UNITED KENO HILL MINES LTD.

	BY	DATE	SCALE 1"=100'
	R.D.	05/07/79	
DRAWN			FIGURE 6



CONTOUR INTERVALS
PARTS PER MILLION

- 100-200
- 200-400
- 400-800
- 800-1600

