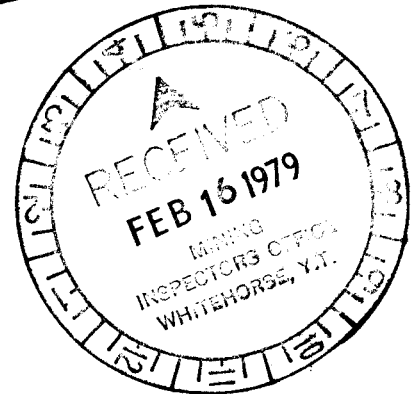


MOOSE CREEK PROSPECT  
PUB CLAIMS  
116-c-2  
ASSESSMENT REPORT



By:

R. E. Haverslew

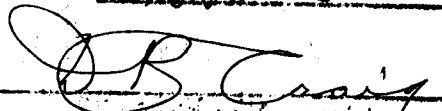


Ocean Home Exploration Co. Ltd.  
P.O. Box 3174, Station B  
Calgary, Alberta  
T2M 4L7

090431

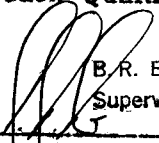
This report has been examined by the Geological Evaluation Unit and is recommended to the Commissioner to be considered as representation work in the amount of

\$16,000.00

  
B. R. BAXTER  
Supervising Mining Recorder

26/2/79

Considered as representation work under Section 53 (4), Yukon Quartz Mining Act.

  
B. R. BAXTER  
Supervising Mining Recorder

  
Commissioner of Yukon Territory

## SUMMARY

Mineral exploration in 1977 by Ocean Home Exploration Co. Ltd. (formerly Moose Creek Exploration Ltd.) for American Copper and Nickel Company, Inc. in the western Yukon Crystalline Terrane of the Yukon and Alaska has resulted in the acquisition of the Moose Creek prospect (PUB Claims). The area shows promise for a volcanogenic massive sulphide environment. The Moose Creek prospect (40 claims) was the result of reconnaissance geological and geochemical mapping and prospecting during 1976 and 1977. The area is designated on Figure 1 for convenience and reference to roads and other pertinent features.

This report is a compilation of data collected during the 1977 and 1978 field season. The combined efforts of many persons went into the completion of the field program and include myself, Harley Hoiles, Dr. Say Lee Kuo, Beth Haverslew, and Dan Pritchard. Karl Olbrecht, Geoff Radford, and Bob Gerlock conducted the Turam geophysical survey during June and July of 1978.



Rod E. Haverslew

OCEAN HOME EXPLORATION CO. LTD.  
Calgary, Alberta

December 8, 1978

## TABLE OF CONTENTS

	Page
Summary	ii
List of Figures and Maps	iv
LOCATION, ACCESS, AND TOPOGRAPHY	1
INITIAL INTEREST	1
SPECIFIC GEOLOGY AND MINERALIZATION	2
GEOCHEMISTRY	3
Analytical Techniques	3
Procedures and Results	4
GEOPHYSICS	6
CONCLUSIONS AND RECOMMENDATIONS	6
Property Expenses	8
Literature Cited	9
Figures	18
Maps	19
Appendix 1: List of Claims	22

## LIST OF FIGURES AND MAPS

	Page
FIGURE 1: Index Map	18
MAP 1: Geology of PUB Claims	19
MAP 2: Geochemistry and Geophysics of PUB Claims	20
MAP 3: Claim Map	21

## MOOSE CREEK PROSPECT (PUB CLAIMS)

### LOCATION, ACCESS, AND TOPOGRAPHY

The area under description is located on the western part of NTS 116 C/2, covering 1 to 2 miles north and south of the Dawson-Boundary Highway, abutting the Yukon-Alaska border. Mercator coordinates for the southwest corner of the claim block are 64° 7' North Latitude and 140° 56' West Longitude.

The area covers the headwaters of Moose and Browns creeks which flow northward into Fortymile River and the headwaters of Little Gold Creek which flows southward into the Sixtymile River. The topography is typified by low rounded hills and a relatively steep transected drainage system.

### INITIAL INTEREST

The Moose Creek area, from limited reconnaissance in the area during 1976, was recognized as having potential for volcanogenic massive sulphides. The same felsic schists that are host to mineralization at the Boundary prospect, Alaska were followed and mapped eastward into the Moose Creek area of the Yukon for about 6 to 7 miles. The quartz sericite schist unit is exposed in the Moose Creek area through a strike length of about 3 miles and a width of about 1/2 mile. Anomalous lead-zinc geochemistry was found in pyrite-rich quartz sericite schist, with rocks and streams containing values in the order of 100 - 140 ppm lead and 250 - 450 ppm zinc. One rock sample from a zone 1 foot wide contained values of 740 ppm copper, 160 ppm lead, 6000 ppm zinc, and 7.6 ppm silver. During the 1977 field season, 40 claims were staked to cover the prospect. See Appendix 1.

## SPECIFIC GEOLOGY AND MINERALIZATION

Lithological units (see Plate 1) can be classified into 3 major groups:

### (1) Nasina Series (Proterozoic to Paleozoic)

This group of rocks occurs mainly in the southern part of the area, with a smaller, sinuous band in the eastern part extending further northward. The rocks are grey micaceous quartzite, graphitic phyllite and quartzite, and minor quartzose metargillite. Rusty weathering with limonite and altered pyrite are occasionally present.

### (2) Klondike Schists (Proterozoic to Paleozoic)

This group of rocks occurs in the entire northern part and in the southeastern corner of the area. The rocks can be subdivided into 4 units:

#### (a) Quartz muscovite (sericite) schist + feldspar and chlorite.

A characteristically white to light brown, generally limonitic, quartz sericite schist with well developed fraser structures and small augen clasts. In-place, small grains of altered feldspar or chloritoid minerals (usually common chlorite, rarely stilpnomelane) are present in small amounts.

(b) Quartz chlorite mica schist. A light green to grey, quartz chlorite mica (usually sericite, occasionally with biotite) schist. A subordinate number of interfoliated sequences of quartz mica chlorite schist are present in this unit, and they probably represent segregated composition layering by metamorphism.

(c) Chlorite quartz + feldspar schist. A medium to deep green chlorite quartz schist with or without feldspar. It usually

occurs as distinct bands in the quartz chlorite mica schist sequence.

(d) Chloritic greenstone and amphibolite. A deep green, foliated chlorite hornblende quartz greenstone, sometimes with barely recognizable feldspathoid materials. It is probably a metamorphosed sequence of andesite and welded tuffs.

### (3) Volcanics and Intrusives (Tertiary)

At the eastern margin of the area, there occur a series of unmetamorphosed volcanic and intrusive rocks. The volcanic rocks range from vari-colored picrite basalt, basaltic andesite with minor intercalated welded tuffite, to coarse explosion breccia and agglomerate. The intrusive rocks are mainly medium grained diorite porphyry, with minor feldspar porphyry.

Disseminated pyrite and limonite intermittently occur in the Nasina series and Klondike schists, especially in the quartz sericite schist unit. Small limonitic and leached gossaneous exposures of the unit can be seen in a few localities. Traces of pyrrhotite magnetite and specularite with chalcopyrite were also observed along foliations or in fractures in 1 or 2 localities.

## GEOCHEMISTRY

### Analytical Techniques

All samples were sent into Fairbanks to be analyzed by standard geochemical analyses performed by Resource Associates of Alaska, Inc. Results were usually received back in the field within 1 or 2 weeks. Results were plotted on field base maps when they were received.

Stream sediment and soil samples were dried and sieved to

minus 80 mesh. Rocks were crushed, ground, and split. Copper, lead, zinc, and silver (and where warranted, other element) analyses were performed on 2-gram samples weighed into 50 ml test tubes, and digested with 10 mls of concentrated aqua regia. Each sample was boiled down to about 1/2 the original acid volume, then made up to 20 mls with de-ionized water. Since the samples are boiled to a constant volume, the digestion time varies, depending upon the composition of the sample. All geochem samples, whether they are rock, soil, or stream sediments are subjected to the same digestion.

Analytical quality control is maintained by analyzing duplicate samples and standards. Geochem samples are analyzed in batches of 20, with every batch having 1 sample weighed in duplicate for a precision check on quality control. A standard sample is also analyzed with every batch, but is used for quality control only. The standard sample used contains values in geochem ranges for many elements and has 1 high value which must be diluted to be readable. This provides a constant check on the diluting procedure. Chemical blanks and standards, to calibrate the atomic absorption equipment, are used regularly.

### Procedures and Results

The large proportion of covered area at Moose Creek makes geochemical soil grid sampling a suitable exploration technique for a preliminary evaluation; however, the abundant amount of colluvial materials and the thick overburden make interpretation of the data difficult.

The Moose Creek soil grid was laid out with the base line running east-west and north-south every 1000 feet (see Plate 2). A total of 549 grid samples were taken. In addition to the grid samples, random rock, stream sediment, and soil samples were taken earlier in the field season.

Ideally, samples were collected by augering through the humic matte and A horizon into the generally gray B horizon; but quite often soil profiles were not sufficiently developed to be recognized or differentiated. In very rocky areas, usually along the ridges, samples were collected by scraping soil from between rocks, since auger penetration was impossible.

Computerized histogram plots of 549 samples were made for each of the 3 major elements: copper, lead, and zinc. Silver values were considered to be too erratic to be statistically meaningful. First, second, third, and fourth-order anomalies were determined for each of the 3 major elements. They are presented in Table 1.

Table 1 Moose Creek Geochem Soil Grid Results

Element	Order of Anomaly			
	First	Second	Third	Fourth
Copper	≥ 100 ppm	71-99 ppm	54-70 ppm	40-53 ppm
Lead	≥ 151 ppm	101-150 ppm	71-100 ppm	45-70 ppm
Zinc	≥ 316 ppm	245-315 ppm	176-244 ppm	136-175 ppm
Silver	≥ 0.8 ppm	0-0.7 ppm		

Results from the soil grid indicate anomalous lead, zinc, copper, and to a lesser degree, silver values in areas of substantial extent, and a comparison with the geologic map shows a correlation with exposures of quartz sericite schist with intensely oxidized and leached sulphides.

Results of rock geochemistry samples are too sparse and erratic to be meaningful, but high sample values of gossan fragments offer supportive evidence that the base metal anomalies are sulphide related. Stream sediment samples are moderately anomalous in zinc and lead, and are occasionally weakly anomalous in copper values.

## GEOPHYSICS

The geophysical survey involving Turam techniques was conducted over approximately 7.5 line miles of grid on the Moose Creek prospect during 1978.

The Turam method is the most commonly employed fixed source system with field strength ratios and phase differences measured between successive observation points. The normalized results from the Turam survey are presented in the form of profiles showing the variations of field strength ratios and phase differences, and appear on Map 2 along with the geochemical results.

No significant anomalies resulted from the survey, although this may be, in part, because of the discontinuous and disseminated style of mineralization or the degree of leaching and oxidation of the sulphides. A few, very weak ratio and phase kicks are present which may or may not be due to overburden effects.

## CONCLUSIONS AND RECOMMENDATIONS

Work on the Moose Creek prospect to date has been largely oriented toward prospecting. Results from geologic mapping and sampling at a scale of 1 inch to 1000 feet and 1 inch to 500 feet on the Moose Creek prospect has confirmed the existence of syngenetic pyrite-sphalerite-chalcopyrite mineralization as laminations and beds (?) within the quartz sericite and quartz sericite chlorite schists. Most of the mineralized outcrops in the prospect area are intensely oxidized and leached, but results from the soil grid indicate encouraging lead, zinc, copper, and to a lesser degree, silver values.

Even though no significant base metal mineralization has been detected in the area, in view of the widespread pyrite and limonite

occurrence in a belt of quartz sericite felsic (button?) schist, more work is going to be required to properly assess the potential of the Moose Creek prospect. Recommendations for this property are as follows:

Geophysics. A geophysical survey involving induced polarization (I.P.) methods should be conducted over approximately 105,000 line feet of grid to delimit the extent of sulphides below the depth of oxidation. Because of the discontinuous and disseminated style of mineralization, induced polarization might provide a good correlation between sulphide clast density and I.P. response. The disseminated mineralization may be forming a peripheral pattern around more massive ore horizons. In addition to the I.P. survey, magnetic and VLF surveys should be conducted to assist in gaining additional geological and structural information.

Geology. The area should be systematically mapped on a scale of 1 inch to 200 feet over the entire Moose Creek grid and adjacent ridges. Although outcrop is limited to the ridge tops and along the creeks, such detailed mapping should adequately reveal any surface information.

Geochemical Sampling. A number of geochemical anomalies have been delineated on the present soil grid. These should be sampled in detail on north-south lines every 500 feet with 200 foot spacing between samples. Sampling of selected areas could be done by blasting and trenching where overburden and rubble drift are not so problematical.

Drilling. Contingent upon the geophysical results and additional geochemical data, it is proposed that at least 2000 feet of core be drilled on the Moose Creek prospect. It will probably be necessary to drill these holes to 800 - 1000 foot depths.

PROPERTY EXPENSES: PUB CLAIMS

WITHIN THE YUKON TERRITORY

140 man days @ \$75.00/man day	\$10,500.00
Food and Lodging @ \$20.00/man day	2,800.00
Transportation:	
1 4x4 truck @ \$34.00/day (28 days)	952.00
1 2x2 truck @ \$28.00/day (44 days)	1,232.00
Helicopter 29 hours @ \$180/hour	5,220.00
Geophysical Technician plus equipment @ \$150.00/day	2,200.00
Communications:	
Radios, etc. 28 days @ \$25/day	700.00
Travel: Mobilization and Demobilization	835.00
Other: Expediting, supplies, etc.	740.00

OUTSIDE THE YUKON TERRITORY

Geochem analysis (549 samples)	3,568.50
Maps and Air Photos	284.60
Report Preparation	250.00

TOTAL \$29,082.10

## PERTINENT REFERENCES

- Anderson, C. A., 1969, Massive sulfide deposits and volcanism: Econ. Geol., v. 64, p. 129 - 146.
- Archer, A. R., and Main, C. A., 1971, Casino, Yukon - A geochemical discovery of an unglaciated Arizona-type porphyry; C.I.M. Spec. v. 11, p. 67 - 77.
- Asher, R.R., 1970 Geochemistry and geology of the Boundary Area, Fortymile District, Eagle A-1 Quadrangle, Alaska: Division of Mines and Geology, Geochemical Report no. 23, 35p.
- Berg, H. C., and Cobb, E. H., 1967, Metalliferous lode deposits of Alaska: U.S. Geological Survey Bull. 1246, p. 210 - 212.
- Berg, H. C., Jones, D. L., and Richter, D. H., 1972, Gravina-Nutzotin Belt, tectonic significance of an upper Mesozoic sedimentary and volcanic sequence in southern and southeastern Alaska: U.S. Geol. Survey Prof. Paper 800-D, p. D1-D24.
- Blusson, S. L., 1976, Selwyn Basin, Yukon and District of Mackenzie; Report of Activities; Geol. Surv. Can., Paper 76-1 Part A, p. 131 - 132.
- Bostock, H.S., 1934, The mining industry of Yukon, 1934, Geol. Surv. Can, Mem. 178.
- \_\_\_\_\_, 1936a, Carmacks District, Yukon: Geol. Surv. Can., Mem. 193.
- \_\_\_\_\_, 1936b, Mining industry of Yukon, 1935: Geol. Surv. Can., Mem. 193.
- \_\_\_\_\_, 1937, Mining industry of Yukon, 1936: Geol. Surv. Can. Mem. 209.
- \_\_\_\_\_, 1938, Mining industry of Yukon, 1937: Geol. Surv. Can., Mem. 218
- \_\_\_\_\_, 1939, Mining industry of Yukon, 1938: Geol. Surv. Can., Mem. 220.
- \_\_\_\_\_, 1941, Mining industry of Yukon, 1939: Geol. Surv. Can., Mem. 234.
- \_\_\_\_\_, 1942, Ogilvie map-area: Geol. Surv. Can., Map 711A.
- \_\_\_\_\_, 1948, McQuesten, Yukon Territory: Geol. Surv. Can., Paper 48 - 25.
- \_\_\_\_\_, 1957, Yukon Territory, selected Field Reports of the Geological Survey of Canada 1898 - 1933: Geol. Surv. Can., Mem. 284, 650 p.

- Bostock, H. S., 1964, McQuesten map-area: Geol. Surv. Can., Map 1134A.
- Bostock, H. S., and Lees, E. J., 1938, Laberge map-area, Yukon: Geol. Surv. Can., Mem. 217.
- Boyle, R. W., 1965, Geology, geochemistry, and origin of the lead-zinc-silver deposits of the Keno Hill-Galena Hill area, Yukon Territory: Geol. Surv. Canada, Bull, 111.
- Brabb, E. E., 1967, Stratigraphy of the Cambrian and Ordovician rocks of east central Alaska: U.S. Geol. Surv. Prof. Paper 559-A, p. A1 - A30.
- Brabb, E. E., and Churkin, M. Jr., 1965, Preliminary geologic map of the Ealge D-1 quadrangle, east-central Alaska: U.S. Geol. Surv. Open-File Rept., 2 p.
- \_\_\_\_\_, 1969, Geologic map of the Charley River quadrangle, east-central Alaska: U.S. Geol Surv. Misc. Geol. Inv. Map I-573.
- Capps, S. R., 1912, The Bonnifield Region: U.S. Geol. Survey Bull. 501.
- Christian, J. D., 1966, The development of the Clinton Creek asbestos deposit and its effects on the Yukon; paper presented to Northern Resources Conference, Whitehorse, Yukon Territory, 1966: Western Miner, April 1966, p. 216-220.
- Churkin, Michael, Jr., and Brabb, E. E., 1965, Occurrence and stratigraphic significance of Oldhamia, a Cambrian trace fossil, in east-central Alaska, in Geological Survey research 1965: U.S. Geol. Surv. Prof. Paper 525-D, p. D120 - D124.
- Clark, S. H. B., et al, 1969, Geochemical data in the Sikonsina Pass Area; in Some Shorter Mineral Resource Investigations in Alaska: U.S. Geol. Surv. Circ. 615, p. 21 - 25.
- Cobb, E. H., 1972, Metallic mineral resources map of the Mt. Hayes quadrangle, Alaska; U.S. Geol Survey Map. MF-414.
- Colley, H., 1976, Classification and exploration guide for Kuroko-type deposits based on occurrences in Fiji: Instn. of Min. and Metall., (Sect. B: Appl. Earth Sci.) v. 95.
- Cockfield, W. E., 1921, Sixtymile and Ladue Rivers area, Yukon: Can. Geol. Surv. Mem. 123, 60p.

- Craig, D. B., and Laporte, P., 1972, Mineral industry of Yukon Territory and Southwestern District of Mackenzie, 1969 - 1970: Dept. of Ind. Aff. and North. Development, v. I.
- Craig, D. B., and Milner, M. W., 1975, Mineral Industry Report, Yukon Territory, 1971 and 1972: Dept. Indian Aff. and North. Development. EGS 1975 - 1976.
- Curtin, G. C., et al, 1976, Geochemical maps showing the distribution and abundance of copper in the Tanacross quadrangle, Alaska: U.S. Geol. Survey MF-767-F.
- \_\_\_\_\_, 1976, Geochemical maps showing the distribution and abundance of molybdenum in the Tanacross quadrangle, Alaska: U.S. Geol. Survey MF-767-G.
- \_\_\_\_\_, 1976, Geochemical maps showing the distribution and abundance of lead in the Tanacross quadrangle, Alaska: U.S. Geol. Survey MF-767-H.
- \_\_\_\_\_, 1976, Geochemical maps showing the distribution and abundance of zinc in the Tanacross quadrangle, Alaska: U.S. Geo. Survey MF-767-I.
- \_\_\_\_\_, 1976, Geochemical maps showing the distribution and abundance of arsenic and mercury in the Tanacross quadrangle, Alaska: U.S. Geol. Survey MF-767-J.
- \_\_\_\_\_, 1976, Geochemical maps showing the distribution and abundance of tin in the Tanacross quadrangle, Alaska: U.S. Geol. Survey MF-767-K.
- \_\_\_\_\_, 1976, Geochemical maps showing the distribution and abundance of beryllium in the Tanacross quadrangle, Alaska: U.S. Geol. Survey MF-767-L.
- \_\_\_\_\_, 1976, Composite geochemical map of anomalous copper and molybdenum distribution in the Tanacross quadrangle, Alaska: U.S. Geol. Survey MF-767-M.
- \_\_\_\_\_, 1976, Composite geochemical map of anomalous lead and zinc distribution in the Tanacross quadrangle, Alaska: U.S. Geol. Survey MF-767-N.
- Dawson, K. M., 1975, Carbonate-hosted zinc-lead deposits of the Northern Canadian Cordillera: Geol. Surv. Can., Paper 75-1, Part A., p. 239 - 241.
- Department of Indian and Northern Affairs, Mineral Industry Reports for 1971, 1972, 1973, and 1975, Whitehorse, Yukon.
- Dusel, C. J., 1976, Status of land in the Tanacross quadrangle, Alaska: U.S. Geol. Survey MF-767-D.

- Eakins, G. R., 1975, Investigations of Alaska's uranium potential: Alaska State Dept. of Natl. Resources, p. 336 - 334.
- Eisbacher, G. H., 1975, Operation St. Elias, Yukon Territory: Dezadeash Group and Amphitheatre Formation: G.S.C. Paper 75-1, Part A., p.61 - 62.
- Findlay, D. C., 1969, The Mineral industry of Yukon Territory and Southwestern District of Mackenzie: Geol. Survey Can., Paper 68 - 68, 114p.
- \_\_\_\_\_, 1969a, The Mineral industry of Yukon Territory and Southwestern District of Mackenzie: Geol. Survey Can., Paper 69-55, 67 p.
- Foster, H. L., 1967, Geology of the Mount Fairplay area, Alaska: U.S. Geol. Survey Bull, 1241-B, p. B1-B18.
- \_\_\_\_\_, 1969a, Asbestos occurrence in the Eagle C-4, quadrangle, Alaska: U.S. Geol. Survey Circ. 611, 7 p.
- \_\_\_\_\_, 1969b, Reconnaissance geology of the Eagle A-1 and A-2 quadrangles Alaska: U.S. Geol. Survey Bull. 1271-G, p. G1-G30.
- \_\_\_\_\_, 1970, Reconnaissance Geologic Map of the Tanacross quadrangle, Alaska: U.S. Geol. Survey Misc. Geol. Inc. Map 593, 1:250,000 scale.
- Foster, H. L., and Keith, T. C., 1968, Preliminary geologic map of the Eagle B-1 and C01 quadrangles, Alaska: U.S. Geol. Survey Open-File Dept.
- Foster, H. L., Weber, R.R., Forbes, R. B., and Brabb, E. E., 1973, Regional geology of Yukon-Tanana upland, Alaska, in Arctic geology: Am. Assoc. Petroleum Geologists Mem. 19, v. 4, p. 388 - 395.
- Gabrielse, H., 1967, Tectonic evolution of the Northern Canadian Cordillera: Canadian Jour. Earth Sci., v. 4, p. 271-298.
- Gates, G. O., and Gryc, G., 1963, Structure and tectonic history of Alaska: in Backbone of the Americas, edited by Childs, O.E., and Beebe, B.W., Amer. Assoc, Petrol. Geol., p. 252 - 277.
- Godwin, C. I., 1975, Alternative Interpretations for the Casino Complex and Klotassin Batholith in the Yukon Crystalline Terrane: Can. J. Earth Sci., v. 12, p. 1910 - 1916.

Green, L. H., 1965, The Mineral industry of Yukon Territory and Southwestern District of Mackenzie: Geol. Survey Can., Paper 65 - 19, 84 p.

\_\_\_\_\_, 1966, The Mineral industry of Yukon Territory and Southwestern District of Mackenzie: Geol. Survey of Can., Paper 66 - 31, 124 p.

Green L. H., and Roddick, J. A., 1962, Dawson, Larsen Creek, and Nash Creek map areas, Yukon Territory: Canada Geol. Survey Paper 62 - 7, 20 p.

Griscom, A., 1976, Aeromagnetic map interpretation of the Tanacross quadrangle, Alaska: U.S. Geol. Survey MF-767-A.

Holmes, G. W., 1965, Geologic reconnaissance along the Alaska Highway Delta River to Tok Junction, Alaska: U.S. Geol. Survey, Bull. 1181 - H, 19 p.

Holmes, G. W., and Pewe, T. L., 1965, Geology of the Mt. Hayes D-3 quadrangle, Alaska: U.S. Geol. Surv., Map GQ-366, 1:63,360 scale.

Holmes, G. W., and Goster, H. L., 1968, Geology of the Johnson River Area Alaska: U.S. Geol. Surv., Bull. 1968, 49 p.

\_\_\_\_\_  
Hopwood, T. P., 1976, "Quartz-Eye" bearing porphyroidal rocks and volcanogenic massive sulfide deposits: Econ. Geol., v. 71, p. 589 - 612.

\_\_\_\_\_  
Hughes, O. L., Campbell, R. B., Muller, J. E., and Wheller, J. O., 1969, Glacial limits and flow patterns, Yukon Territory, south of 65 degrees north latitude: Canada Geol. Survey Paper 68 - 34, 9 p.

\_\_\_\_\_  
Hutchinson, R. W., 1973, Volcanogenic sulfide deposits and their metallogenic significance: Econ. Geol., v. 68, p. 1223 - 1246.

Jensen, E. M., 1975, The Cash; a new copper-molybdenum porphyry target in the Dawson Range, Yukon Territory; unpub. B.A.Sc. thesis, University British Columbia

Johnston, J. R., 1937, Geology and mineral deposits of Free-gold Mountain, Carmacks District, Yukon; Geol. Surv. Can., Mem. 214.

Jonasson, I. R., and Goodfellow, W. D., 1976, Uranium Reconnaissance Program: Orientation studies in Uranium Exploration in the Yukon: Part 1 and Part 2, Geol. Survey of Can., Open-File 388, 97 p.

Kindle, E. D., 1952, Dezadeash map-area, Yukon Territory, Can. Geol. Survey Mem. 268, 68 p.

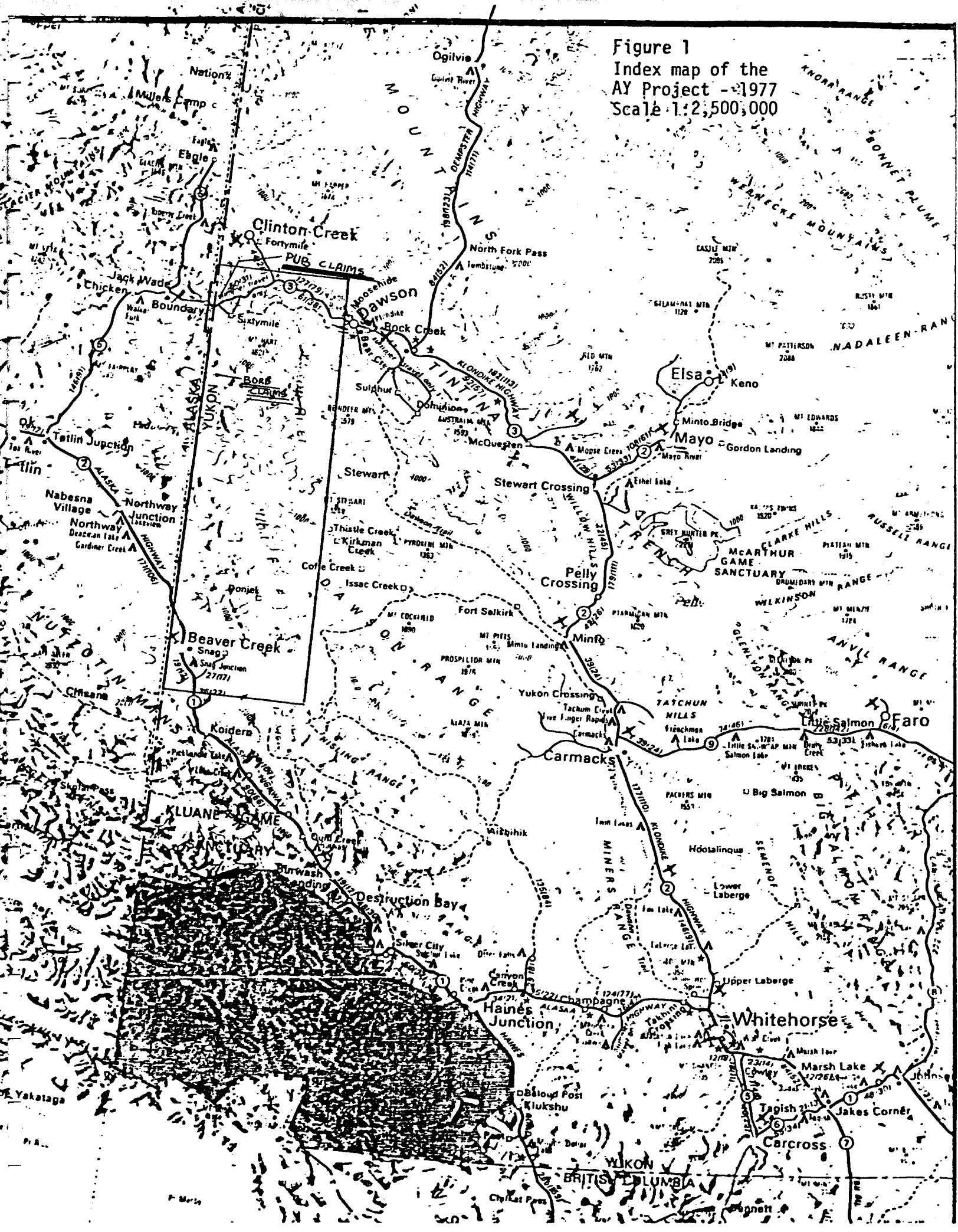
- Le Couteur, P. C., and Tempelman-Kluit, D. J., (in prep.) Rb-Sr ages and profile of initial  $87\text{Sr}/86\text{Sr}$  ratios across the Yukon Crystalline Terrane, Can. J. Earth Sci.
- Mertie, J. B., Jr., 1930, Geology of the Eagle-Circle district, Alaska: U.S. Geol. Survey Bull. 816, 168 p.
- \_\_\_\_\_, 1937, The Yukon-Tanana region, Alaska: U.S. Geol. Survey Bull. 872, 276 p.
- Moffit, Fred H., 1954, Geology of the eastern part of the Alaska Range and adjacent area: U.S. Geol. Surv., Bull. 989-D, 213 p.
- Monger, J. W. H., Souther, J. G., and Gabrielse, H., 1972 Evolution of the Canadian cordillera-A plate-tectonic model: Am. Jour. Sci., v. 272, no. 7, p. 577 - 602.
- \_\_\_\_\_, 1975, Correlation of Eugeosynclinal tectonostratigraphic belts in the North American Cordillera: Geoscience Canada, v. 2, no. 1, p. 4 - 10.
- Morin, J. A., 1975, Preliminary report on the geology of the Ladue River area, 115 N 2; a paper presented at the 3rd Geoscience Forum, Dec. 2-3, 1975, Whitehorse, Yukon.
- Muller, J. E., 1967, Kluane Lake map area, Yukon Territory: Canada Geol. Survey Mem. 340, 137 p.
- Mulligan, R., 1963, Geology of Teslin map-area, Yukon Territory (105C): Canada Geol. Survey Mem. 326, 96 p.
- Péwè, Troy L., and Holmes, G. William, 1964, Geology of the Mt. Hayes D-4 quadrangle, Alaska: U.S. Geol. Surv., Misc. Geol. Inv. Map I-394, 1:63,360 scale.
- Phillips, M. P., and Godwin, C. I., 1970, Geology and rotary drilling at the Casino deposit, Yukon Territory: Western Miner, v. 43, no. 11, p. 43 - 49.
- Prindle, L. M., 1905, The gold placers of the Forty-Mile, Birch Creek and Fairbanks region, Alaska: U.S. Geol. Survey Bull. 525, 220 p.
- \_\_\_\_\_, 1913, A geologic reconnaissance of the Fairbanks quadrangle, Alaska: U.S. Geol. Survey Bull. 525, 220 p.
- Ragan, D. M., and Hawkins, J. W., Jr., 1966, A polymetamorphic complex in the eastern Alaska Range: Geol. Soc. Am. Bull., v. 77, p. 597 - 604.

- Read, P. B. , and Monger, J. W. H., 1975, Operation St. Elias, Yukon Territory: The Mush Lake Group and Permo-Triassic rocks in the Kluane Ranges: Geol. Surv. Can., Paper 75-1 Part A., p. 55 - 59.
- Richter, D. H., 1967, Geology of the Upper Slana-Mentasta Pass Area: Alaska Dept. of Natural Resources, Div. of Mines and Minerals, Geologic Report, no. 30, 24 p
- \_\_\_\_\_, 1975a, Geologic map of the Nabesna quadrangle, Alaska: U.S. Geol. Survey Misc. Field Studies Map MF-655A, 1:250,000 scale.
- \_\_\_\_\_, 1975b, Geologic map of the Nabesna quadrangle, Alaska: U.S. Geol. Survey Misc. Geol. Inv. Map I -932, 1:250,000 scale.
- Richter, D. H., and Jones, D. I., 1973, Structure and stratigraphy of Eastern Alaska Range, Alaska, in Arctic Geology: Amer. Assoc. Pet. Geol., Mem. 19, p. 408 - 420.
- Richter, D. H., and Schmol1, H. R., 1972, Reconnaissance geologic map and sections of the Nabesna C-5 quadrangle, Alaska: U.S. Geol. Survey Geol. Quad. Map GQ-1062, scale 1:63,360 (in press).
- Richter, D. H., et al, 1975a, Alaska Mineral Resource Assessment Program background information to accompany folio of geologic and mineral resource maps of the Nabesna quadrangle, Alaska: U.S. Geol. Surv., Circ. 718, 6 p.
- \_\_\_\_\_, 1975b, Mineral Resources Map of the Nabesna quadrangle, Alaska: U.S. Geol. Survey, Misc. Field Studies Map MF-755K, 1:250,000 scale.
- \_\_\_\_\_, Roddick, J. A., 1967, Tintina Trench: Jour. Geology, v. 75., p. 23 - 32.
- Saunders, R. H., 1966, A geochemical investigation along the Taylor Highway, East-Central, Alaska: Division of Mines and Minerals, Geochemical Report no. 9 30p.
- Saunders, R. H., 1967, Mineral occurrences in the Yukon-Tanana region, Alaska: Alaska State Dept. Natl. Resources Spec. rept. 2, p. 60.
- Sinclair, W. D., Maloney, J. M., and Craig, D. B., 1975, Mineral Industry Report, Yukon Territory, 1974: Dept. Ind. and Northern Affairs, E.G.S. 1975 - 9.

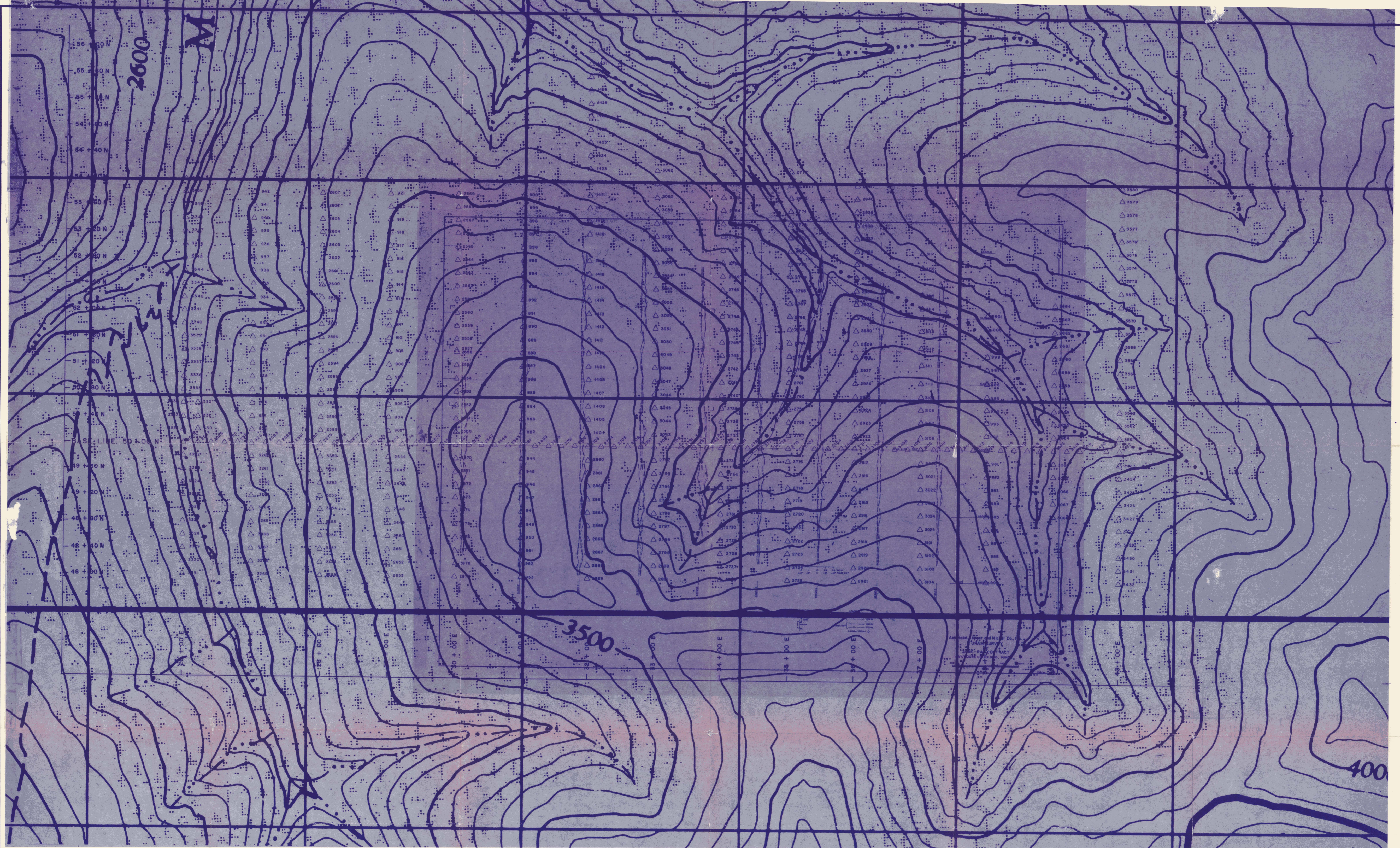
- Sinclair, W. D., Morin, J. A., Craig, D. B., and Marchand, M., 1976, Mineral Industry Report, 1975, Yukon Territory: Dept. of Indian and Northern Development, 192 p.
- Sinclair, W. D. and Gilbert, G. W., 1975, Mineral Industry Report, Yukon Territory, 1973: Dept. Indian and Northern Affairs, E.G.S. 1975 -7.
- Smith, J.G., and MacKevett, E. M., Jr., 1970, The Skolai Group in the McCarthy B-4, C-4, and C-5 quadrangles, Wrangell Mountains, Alaska: U.S. Geol. Survey Bull. 1274-Q, p. Q1-A26.
- St. Amand, p., 1957, Geological and geophysical synthesis of the tectonics of portions of British Columbia, the Yukon Territory and Alaska: Geol. Soc. America Bull., v. 68, no. 10, p 1343 - 1370.
- Stanton, R. L., 1960, General features of the conformable "pyritic" orebodies. Part 1-Field association; Part 2-Mineralogy: Can. Mining Metall. Bull., v. 53, no. 573, p. 24 - 29; no. 574, p. 66 - 74.
- Stout, J. H. 1965, Bedrock geology between Rainy Creek and the Denali fault, Eastern Alaska Range, Alaska: M.S. Thesis, University of Alaska, 75 p.
- Templeman-Kluit, D. J., 1972, Geology and origin of the Faro, Vangorda, and Swim concordant zinc-lead deposits, central Yukon Territory; Geol. Surv. Can. Bull. 208.
- \_\_\_\_\_, 1974a, Geology of Carmacks map-area: Geol. Surv. Can., Open-File Report 200.
- \_\_\_\_\_, 1974b, Reconnaissance geology of Aishihik Lake, Snag and part of Stewart River map-areas, west-central Yukon: Geol. Surv. Can., Paper 73 - 41.
- \_\_\_\_\_, 1976, The Yukon crystalline terrane: Enigma in the Canadian Cordillera: Geological Society of America Bull., v. 87, p. 1343.
- \_\_\_\_\_, 1977, Stratigraphic and Structural Relations between the Selwyn Basin, Pelly-Cassiar Platform, and Yukon Crystalline Terrane in the Pelly Mountains, Yukon: Report of Activities, Part A, Geological Survey of Canada, Paper 77-1A.
- Wahrhaftig, C., 1968, Schists of the Alaska Range: U.S. Geol. Survey Bull. 1254-E, 22 p.

- \_\_\_\_\_, 1970a, Geologic Map of the Healy D-2 Quadrangle, Alaska: U.S. Geol. Survey Map GQ-804, scale 1:63,360.
- \_\_\_\_\_, 1970b, Geologic map of the Fairbanks A-1 quadrangle, Alaska: U.S. Geol. Survey Map. GQ-808, scale 1:63,360.
- Wahrhaftig, C., et al., 1975, Nature and timing of movement on Hines Creek Strand of Denali Fault System, Alaska: Geology Magazine, August 1975, p. 463 - 466.
- Wanless, R. K., and Tempelman-Kluit, D. J., (in prep.), Paleozoic zircon age for the Pelly Gneiss in the Yukon Crystalline Terrane: Can. J. Earth Sci.
- Wasserburg, G. J., Eberlein, G. D., and Lanphere, M. A., 1963, Age of the Birch Creek Schist and some batholithic intrusions in Alaska (abs.): Geol. Soc. America Spec. Paper 73, p.258 - 259.
- Weber, F. R., 1971, Preliminary engineering geologic maps of the proposed Trans-Alaska pipeline route - Mt. Hayes quadrangle: U.S. Geol. Survey O. F. 493.
- Wheeler, J. O., 1961, Whitehorse Map-Area, Yukon Territory: Geol. Surv. Canada, Mem. 312, p. 1 -156.
- \_\_\_\_\_, 1963, Kaskawulsh Map-Area, Yukon Territory: Geol. Surv. Canada, Map 1134A.

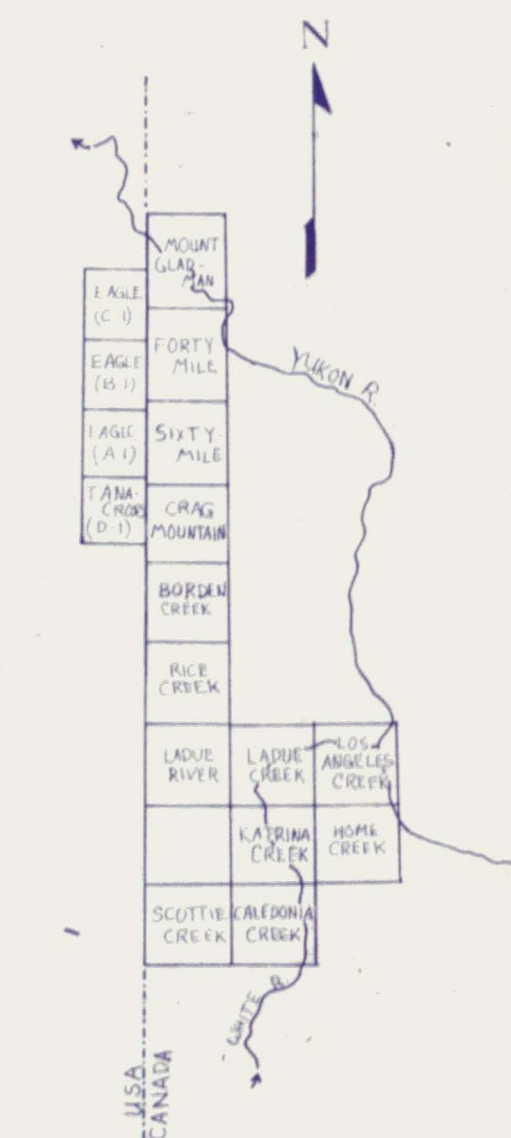
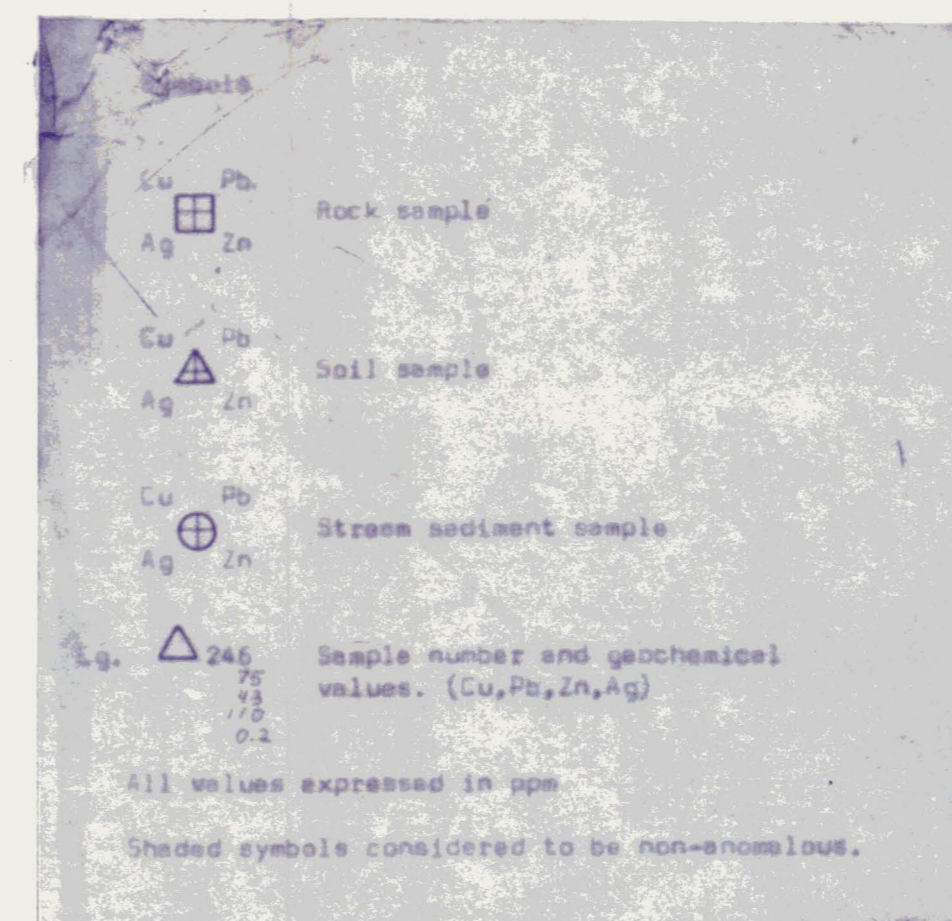
Figure 1  
Index map of the  
AY Project - 1977  
Scale 1:2,500,000







EXPLANATION

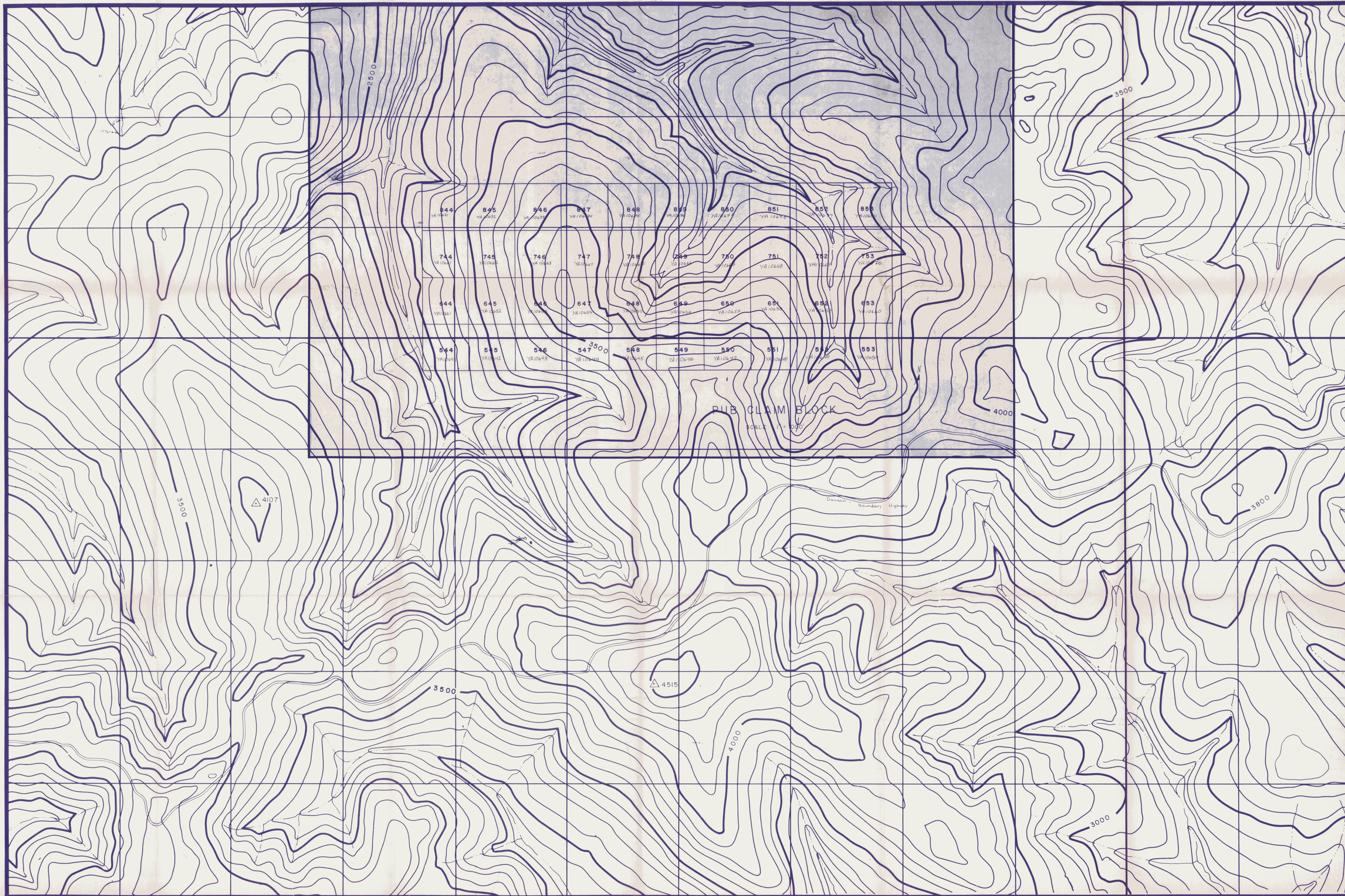


MOOSE CREEK

GEOPHYSICS  
GEOCHEMISTRY

SCALE	1" = 500'	PLATE
DATE	Dec 1998	
DRAWN BY		

Ocean Home Exploration Co.



844 YA 10671	845 YA 10672	846 YA 10673	847 YA 10674	848 YA 10675	849 YA 10676	850 YA 10677	851 YA 10678	852 YA 10679	853 YA 10680
744 YA 10661	745 YA 10662	746 YA 10663	747 YA 10664	748 YA 10665	749 YA 10666	750 YA 10667	751 YA 10668	752 YA 10669	753 YA 10670
644 YA 10651	645 YA 10652	646 YA 10653	647 YA 10654	648 YA 10655	649 YA 10656	650 YA 10657	651 YA 10658	652 YA 10659	653 YA 10660
544 YA 10641	545 YA 10642	546 YA 10643	547 YA 10644	548 YA 10645	549 YA 10646	550 YA 10647	551 YA 10648	552 YA 10649	553 YA 10650

RUB CLAM BLOCK  
SCALE 1" = 690'

Dawson - Boundary Highway

APPENDIX 1: PUB CLAIMS

HOLDER OF THE CLAIMS: Ocean Home Exploration Co. Ltd.  
P.O. Box 3174, Station B  
Calgary, Alberta  
T2M 4L7

<u>CLAIM NAME</u>	<u>GRANT NUMBER</u>
PUB 544 - 553	YA 10641 - YA 10650
PUB 644 - 653	YA 10651 - YA 10660
PUB 744 - 753	YA 10661 - YA 10670
PUB 844 - 853	YA 10671 - YA 10680

Addenda



MOOSE CREEK PROSPECT - PUB CLAIMS

Work for assessment requirements was conducted on the PUB claims during September, 1977 and during June and July, 1978. The soil grid was sampled on September 4, 5, 6, and 7, 1977. The samples were analyzed by Resource Associates of Alaska in Fairbanks.

The geophysical survey was carried out on the PUB claims on July 7, 8, 9, 10 and 11, 1978.

Geological mapping at a scale of 1" = 500 feet was done on the Moose Creek prospect during September, 1977.