



Assessment Report Boot 1-35, 38-39
Watson Lake Mining District
NTS 105G/6

R.J. Cathro, P.Eng. 5 December, 1978



090426

ARCHER, CATHRO

AND ASSOCIATES LTD.

CONSULTING GEOLOGICAL ENGINEERS

BOX 4127, WHITEHORSE, Y.T. Y1A 3S9 667-4415

STANDARD BUILDING, VANCOUVER, B.C. 688-2568

1016 STANDARD BUILDING
510 WEST HASTINGS STREET
VANCOUVER, B.C.
V6B 1L8

Assessment Report
on
Orthophoto Mapping
Boot 1-35, 38-9 Claims

Watson Lake Mining District
Claim Sheet 105G/6
Latitude 61°24'N, Longitude 131°07'W

December 5, 1978

R.J. Cathro, P.Eng.

Consulting Engineer

TABLE OF CONTENTS

<u>Text</u>	<u>Page</u>
Introduction -----	1
Property, Location and Access -----	1
Orthophoto Map Description -----	2

Figures in Pocket

Pocket 1 - Figures 1 and 2, Orthophoto map and topographic map of Boot 1-35, 38, 39 claims, scale 1:5,000

Pocket 2 - Figures 3 and 4, Orthophoto map and topographic map of Marmot 1-24 claims, scale 1:5,000

INTRODUCTION

The Boot 1-24 claim group was staked on August 20, 1977 by Archer, Cathro for Chevron Canada Ltd. following the discovery of scheelite mineralized float in a north facing cirque 6 km west of Grass Lakes. Boot 25-28 claims were added on August 24, 1978 and Boot 29-35, 38, 39 were added August 25 and Marmot 1-24 on September 26, 1978 to cover potentially mineralized areas.

The orthophoto mapping described in this report was obtained to provide ground control for further exploration and mapping conducted in 1978.

PROPERTY, LOCATION AND ACCESS

The Boot property consists of 37 contiguous Boot claims and 24 Marmot claims registered in Watson Lake as follows:

<u>Claim Name</u>	<u>Record No.</u>	<u>Expiry Date</u>
Boot 1-24	Y25436-Y25459	26 August, 1978
Boot 25-35, 38, 39	YA25687-YA25699	7 September, 1978
Marmot 1-24	YA26131-YA26154	30 September, 1978

The claims are located at latitude 61°25'N and longitude 131°07'W on NTS claim sheet 105G/6.

The claims are accessible by helicopter from an unnamed lake, 10 km west of Grass Lakes, which can also be used by float-equipped, fixed wing aircraft. Ross River, the nearest aircraft base is located 100 km northwest of the claims.

The Campbell Highway, an all-weather gravel road connecting Ross River to Watson Lake, is located 30 km north of the property. A 45 km long winter tote trail connected to the Campbell Highway comes to within 8 km of the property.

ORTHOPHOTO MAP DESCRIPTION

The orthophoto maps, included in the pockets of this report as Figures 1 to 4, were prepared by McElhanney Surveying and Engineering Ltd., 1200 West Pender Street, Vancouver, B.C. The maps cover a 16.2 km² area centered on the Boot claim group and another set centered on the Marmot 1-24 claim group. The maps are based on 1 inch to 1/2 mile airphotos obtained from Energy, Mines and Resources, Canada, enlarged to a scale of 1:5,000 and using a contour interval of 50 feet. Elevation control is based on government 1:250,000 NTS map 105G.

The approximate location of the Boot and adjoining Marmot claims are shown on the figures.

Respectfully submitted,
ARCHER CATRO & ASSOCIATES LTD.
R. J. CATRO
GEOLOGICAL
ENGINEER
R. J. Catro, B.A.Sc., P.Eng.
+
Professional Engineers of the Yukon Territory
Association of Professional Engineers

/mc

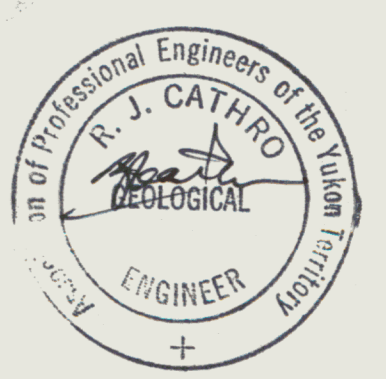
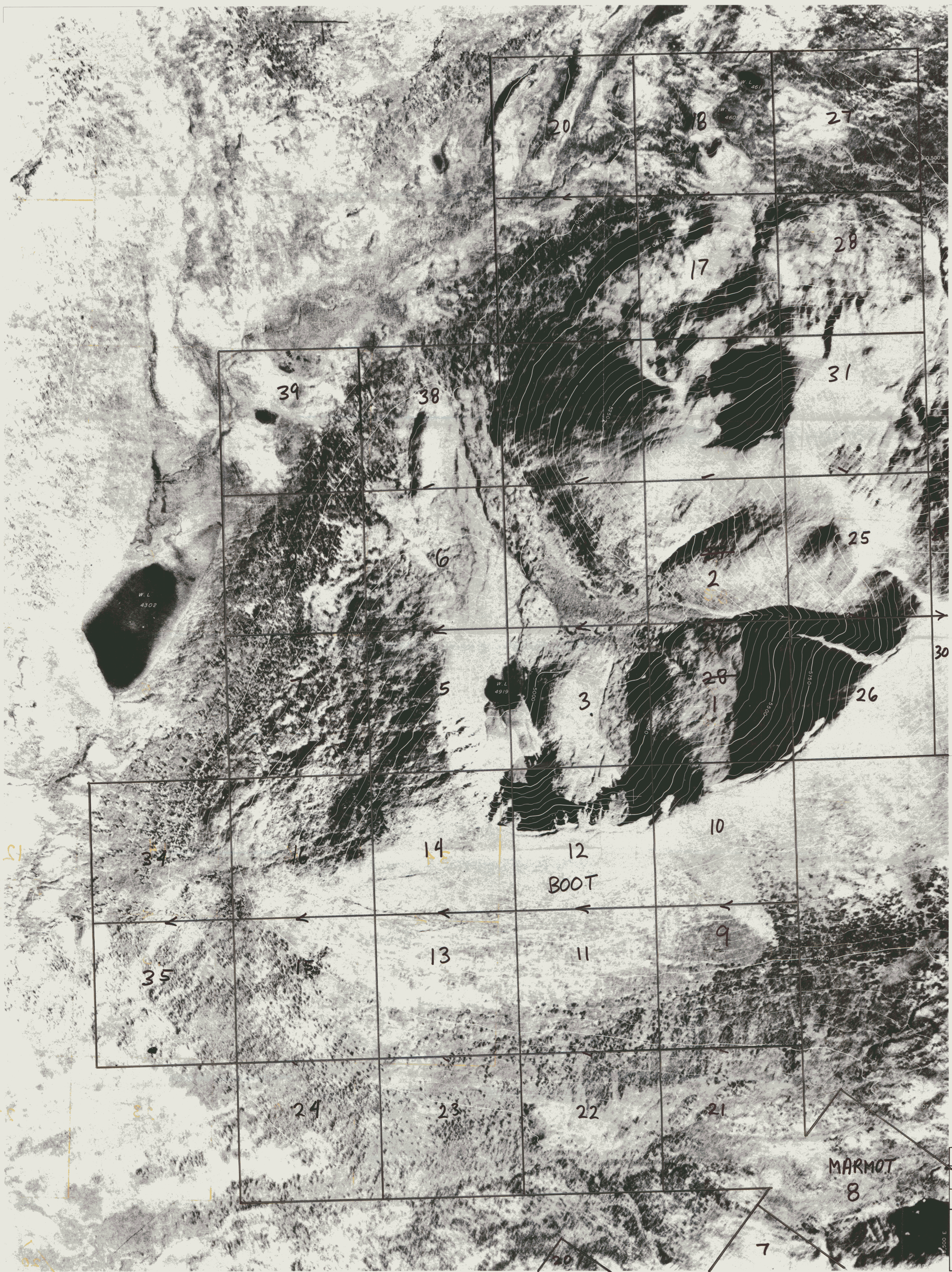


FIG. 1

Scale and elevation datum based on limited ground control resulting in good relative, but uncertain absolute map accuracy. Compiled from aerial photography at an approximate scale of 1 inch equals 2,500 feet flown in 1949.

ARCHER CATHRO ASSOC.	
GRASS PROJECT BOOT CLAIM GROUP	
PRELIMINARY RECONNAISSANCE TYPE MAPPING	
Scale -	1" = 5,000'
Contour Interval -	5' 50'
Date -	JUNE 1978
Job No. -	06478-1
Sheet No. -	2 OF 2



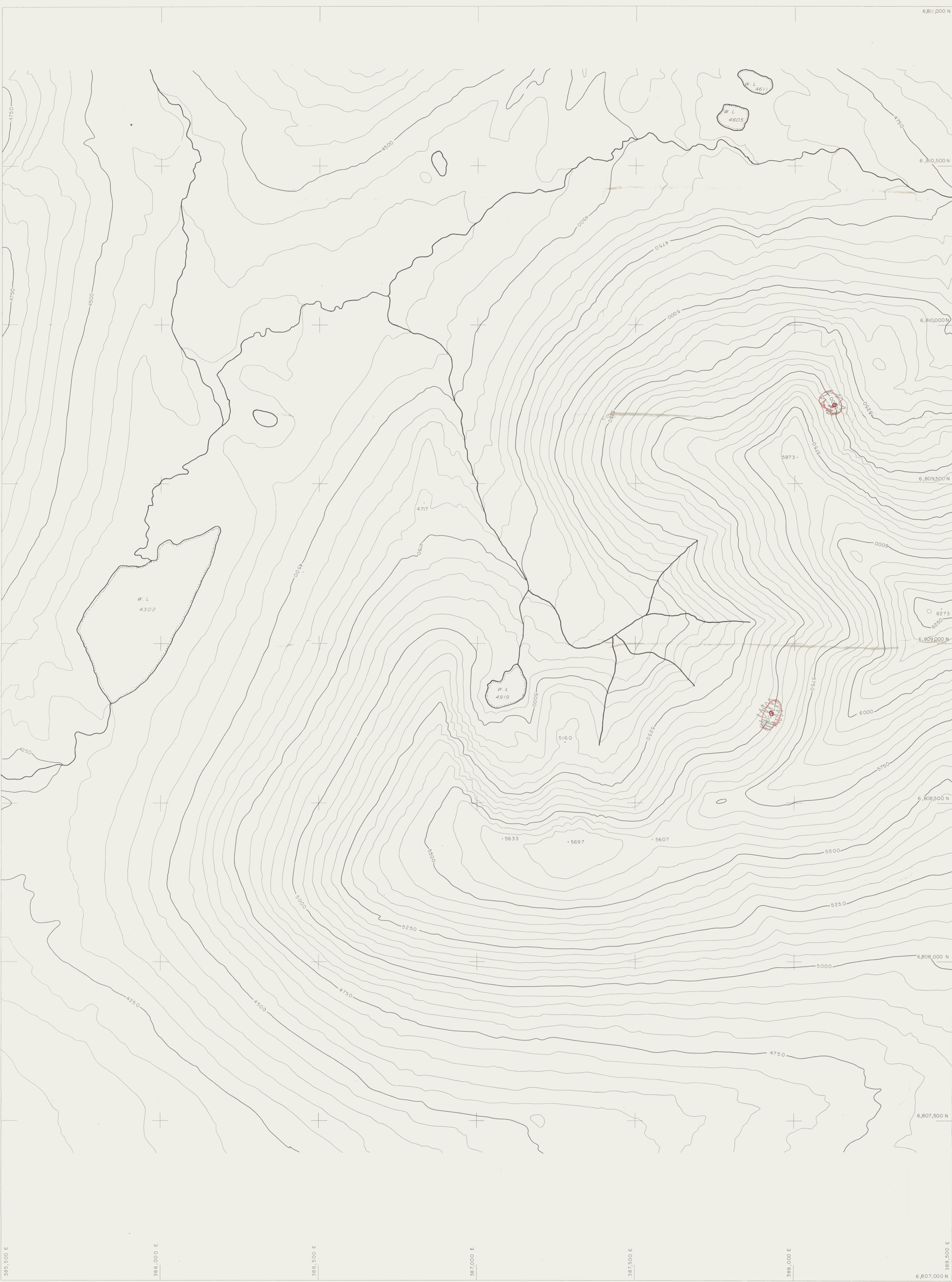

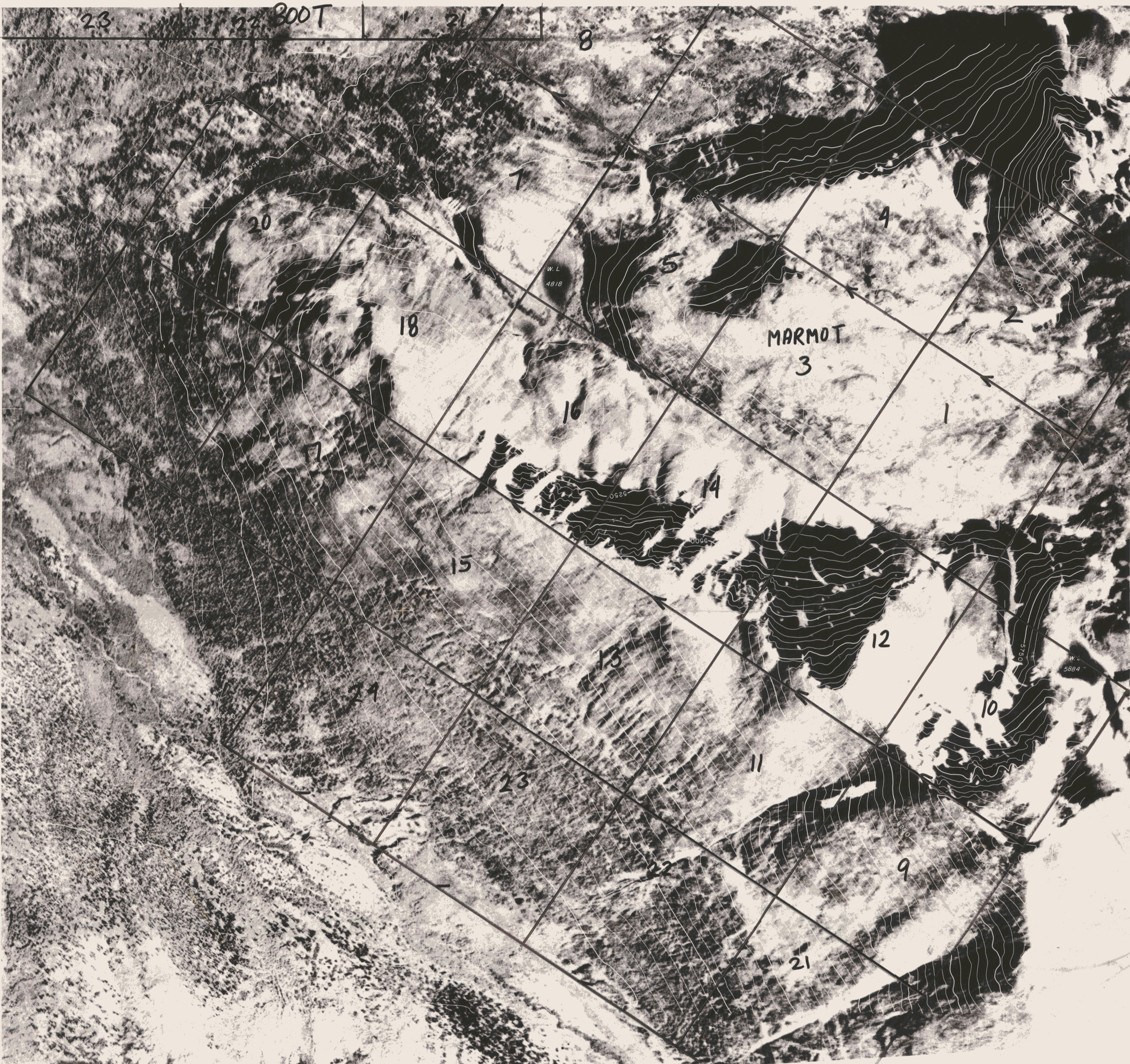


FIG 2

Scale and elevation datum based on limited ground control resulting in good relative, but uncertain absolute map accuracy. Compiled from aerial photography at an approximate scale of 1 inch equals 2,500 feet flown in 1949



ARCHER CATHRO ASSOC.	
GRASS PROJECT BOOT CLAIM GROUP	
PRELIMINARY RECONNAISSANCE TYPE MAPPING	
 McElhanney McElhanney Surveying & Engineering Ltd. 1200 West Fender Street, Vancouver B.C., Canada	Scale - 1 : 5,000 Contour Interval - 5' 50' Date - JUNE 1978 Job No. - 06478-1 Sheet No. - 2 OF 2



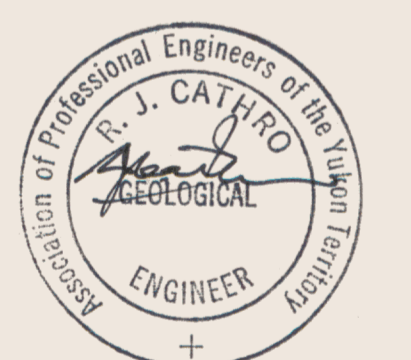
6,807,500 N
 6,807,000 N
 6,806,500 N
 6,806,000 N
 6,805,500 N

386,500 E
 387,000 E
 387,500 E
 388,000 E
 388,500 E
 389,000 E

6,804,500 N
 389,500 E

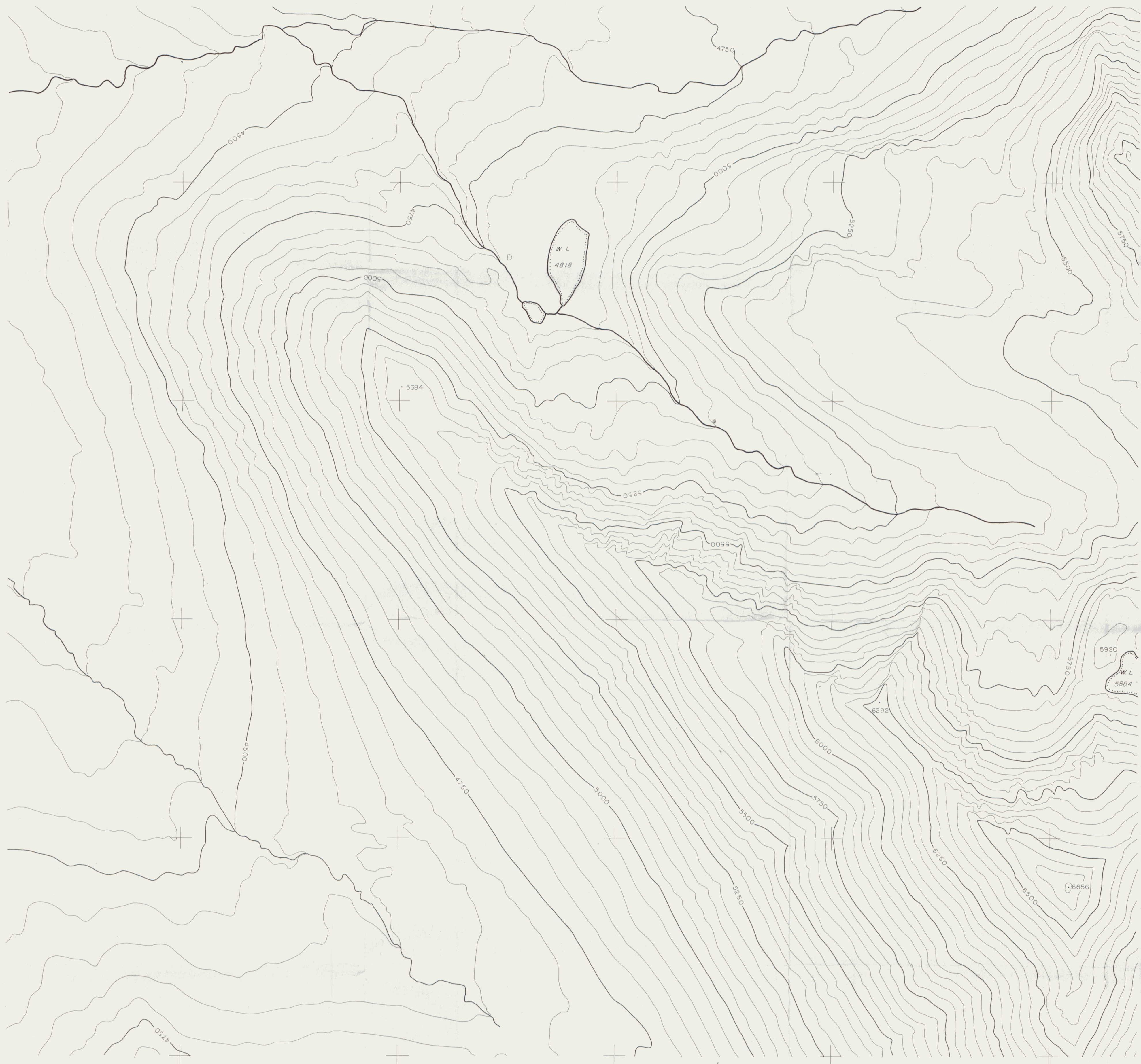
FIG. 3

Scale and elevation datum based on limited ground control resulting in good relative, but uncertain absolute map accuracy. Compiled from aerial photography at an approximate scale of 1 inch equals 2,500 feet flown in 1949



ARCHER CATHRO ASSOC.	
GRASS PROJECT MARMOT CLAIM GROUP	
PRELIMINARY RECONNAISSANCE TYPE MAPPING	
Scale -	1: 5,000
Contour Interval	5' 50'
Date -	JUNE 1978
Job No. -	06478 - 1
Sheet No. -	1 OF 2

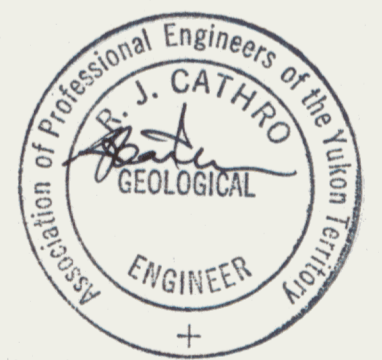





6,807,500 N
 6,807,000 N
 6,806,500 N
 6,806,000 N
 6,805,500 N
 6,805,000 N

386,500 E
 387,000 E
 387,500 E
 388,000 E
 388,500 E
 389,000 E
 389,500 E

FIG 4



Scale and elevation datum based on limited ground control resulting in good relative, but uncertain absolute map accuracy.
 Compiled from aerial photography at an approximate scale of 1 inch equals 2,500 feet flown in 1949

ARCHER CATHRO ASSOC.	
GRASS PROJECT MARMOT CLAIM GROUP	
PRELIMINARY RECONNAISSANCE TYPE MAPPING	
 McElhanney McElhanney Surveying & Engineering Ltd. 1200 West Pender Street, Vancouver B.C., Canada	Scale - 1: 5,000
	Contour Interval - 5' 50'
	Date - JUNE 1978
	Job No. - 06478-1
Sheet No. - 1 OF 2	

6,804,500 N