

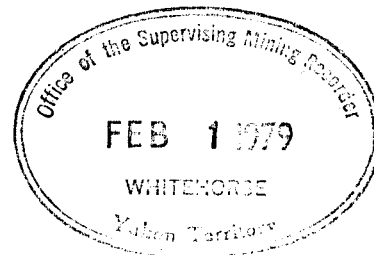


WELCOME NORTH MINES LTD. (N.P.L.)

1027 - 470 Granville St., Vancouver, B.C. V6C 1V5 Telephone (604) 687-1658



LINECUTTING AND ASSAY RESULTS
FOR THE
PIM 1-16, 41-56 MINERAL CLAIMS



N.T.S. 105F-14

WHITEHORSE MINING DISTRICT

Latitude 61°49'N

Longitude 133°06'W

December, 1978

Robert T. Holland

090420

This report was prepared by _____ and is recommended to be considered as an amount of _____

2300.00

[Handwritten Signature]

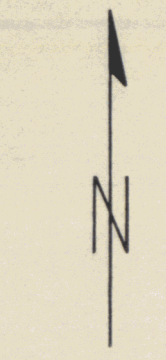
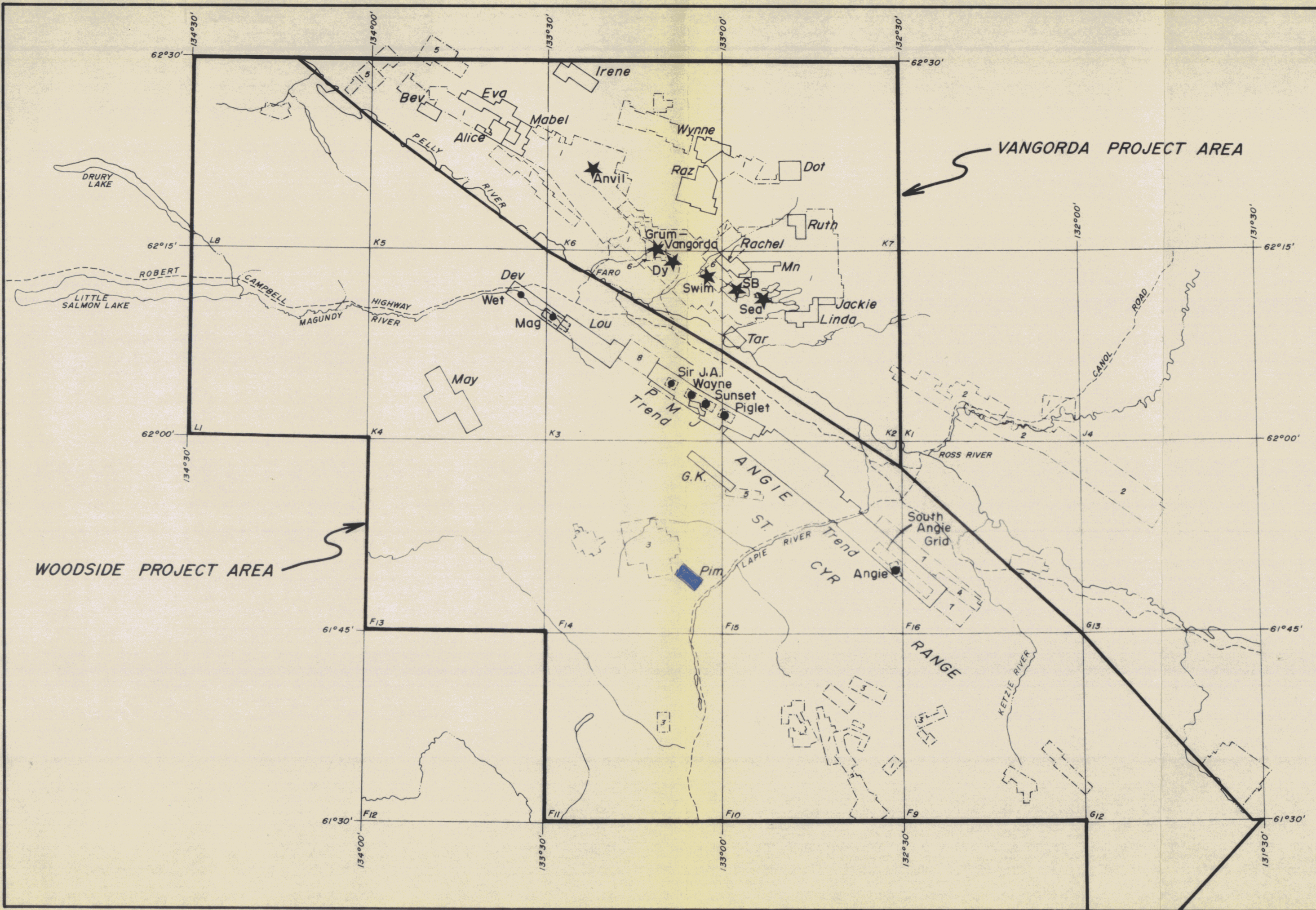
Engineer

Conducts geological work under
Section 3 of the Quartz Mining Act

[Handwritten Signature]

B. R. BAXTER
Supervising Mining Recorder

[Handwritten Signature]
Commissioner of Yukon Territory



LEGEND

- Massive Sulphide Deposit ★
- Mineral Occurrence ●
- River, Creek ———
- Highway - - - - -
- Claims:
- Getty Mining Pacific - Welcome North Mines []
- Cyprus Anvil Mining [1]
- Du Pont of Canada [2]
- Utah Mines [3]
- Cominco [4]
- Amex Potash [5]
- Kerr Addison Mines [6]
- St. Joseph Exploration [7]
- Brendex Resources [8]
- Misc. Other []

WOODSIDE PROJECT AREA

VANGORDA PROJECT AREA

WELCOME NORTH MINES LTD.

GETTY MINING PACIFIC LTD.

PROJECT AREA & PROPERTY LOCATIONS

Scale: 1" = 8 miles Date: Feb. 1978 N.T.S. 105
 Revised: Oct. 1978 By: _____ Fig. 1

TABLE OF CONTENTS

	Page
INTRODUCTION	1
LINECUTTING	1
GEOCHEMICAL ASSAYS	1
STATEMENT OF COSTS	8
<hr/>	
APPENDIX I LIST OF PERSONNEL	

FIGURES

1. PROJECT AREA AND PROPERTY LOCATIONS	Frontispiece
2. CLAIM LOCATION MAP	2
3. GRID LOCATION MAP	3
4. SHOWING LOCATION MAP, PIM CLAIMS	5

TABLES

1. ASSAY RESULTS OF COPPER BEARING QUARTZ VEINS AND FLOAT	6
2. RESULTS OF GEOCHEMICAL ANALYSES OF GOSSANOUS FLOAT	6
3. ANALYTICAL RESULTS OF ANALYSIS OF SKARN MATERIAL	7
4. ANALYTICAL RESULTS FROM OTHER MINERAL OCCURRENCES	7

INTRODUCTION

Work carried out on the PIM claim group during the 1978 field season consisted mainly of linecutting in preparation for future geochemical and possible geophysical surveys. A total of 23 line kilometers of grid was established covering the whole claim area. Chip sampling of numerous small showings for the purpose of evaluation of mineral content and potential was also undertaken.

The PIM claim group is made up of the following contiguous mineral claims located in the Whitehorse Mining District of the Yukon Territory (Fig. 1 and 2):

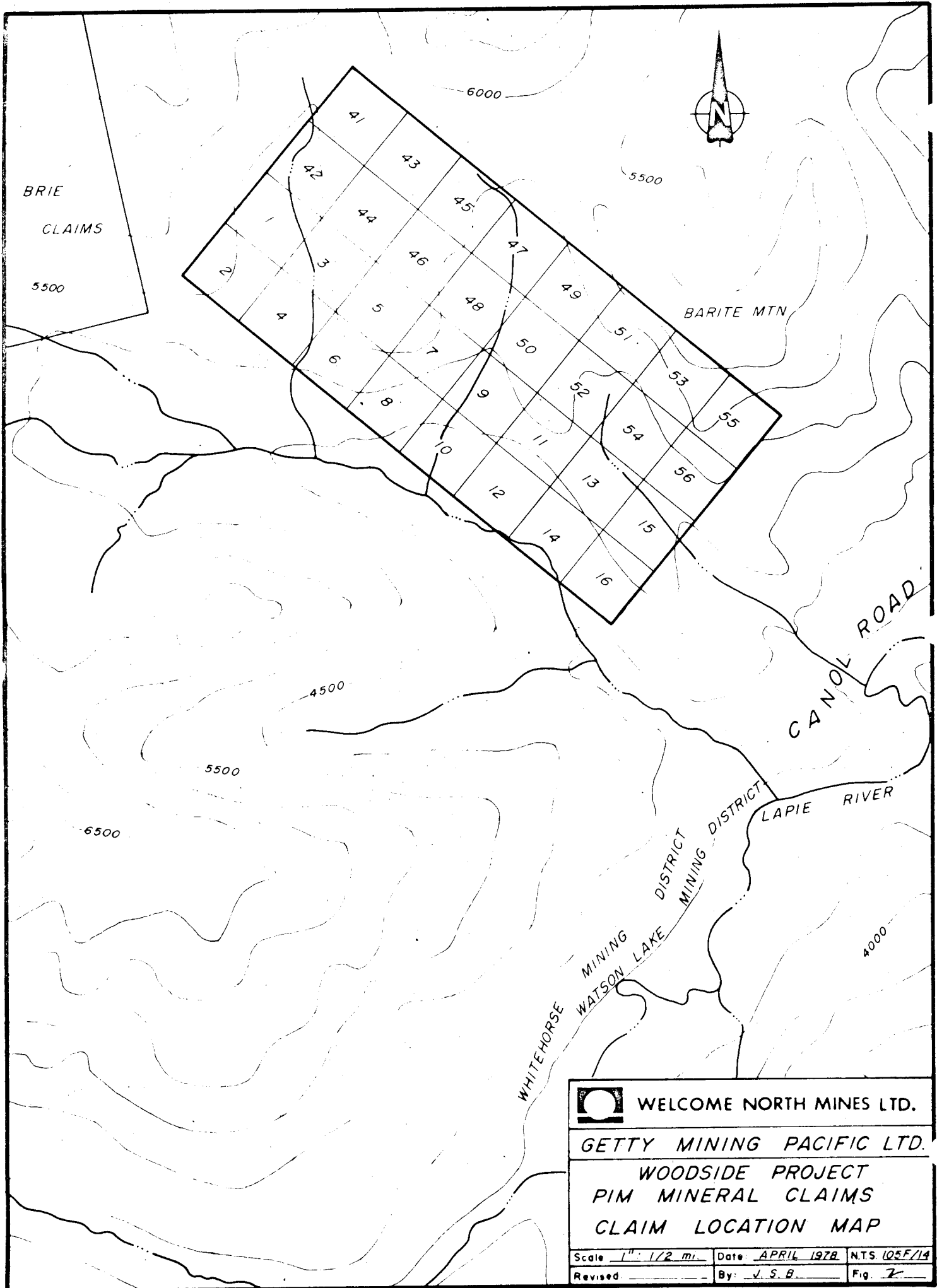
<u>Claim Name</u>	<u>Grant Numbers</u>	<u>Due Date</u>
PIM 1-16	YA4654-YA4669	Dec. 30, 1978
PIM 41-56	YA4694-YA4709	Dec. 30, 1978

LINECUTTING

During the period June 22, 1978 to July 15, 1978 linecutting was carried out on a contract basis by McCrory Holdings Ltd. hired out of Whitehorse. A total of 23 line kilometers of slope-corrected metric cut line grid was established over the PIM claims (Fig. 3). The grid consists of a base line 3,250 meters long with fourteen cross-lines established at 250-meter spacings. The cross-lines range in length from 950 meters to 1,800 meters in length with stations located at 50-meter intervals.

GEOCHEMICAL ASSAYS

Rock chip samples were taken from most of the mineral occurrences located within the PIM grid, and were assayed for one, several, or all of the following elements: copper, lead, zinc, silver, gold, tungsten, tin and



BRIE
CLAIMS
5500




BARITE MTN

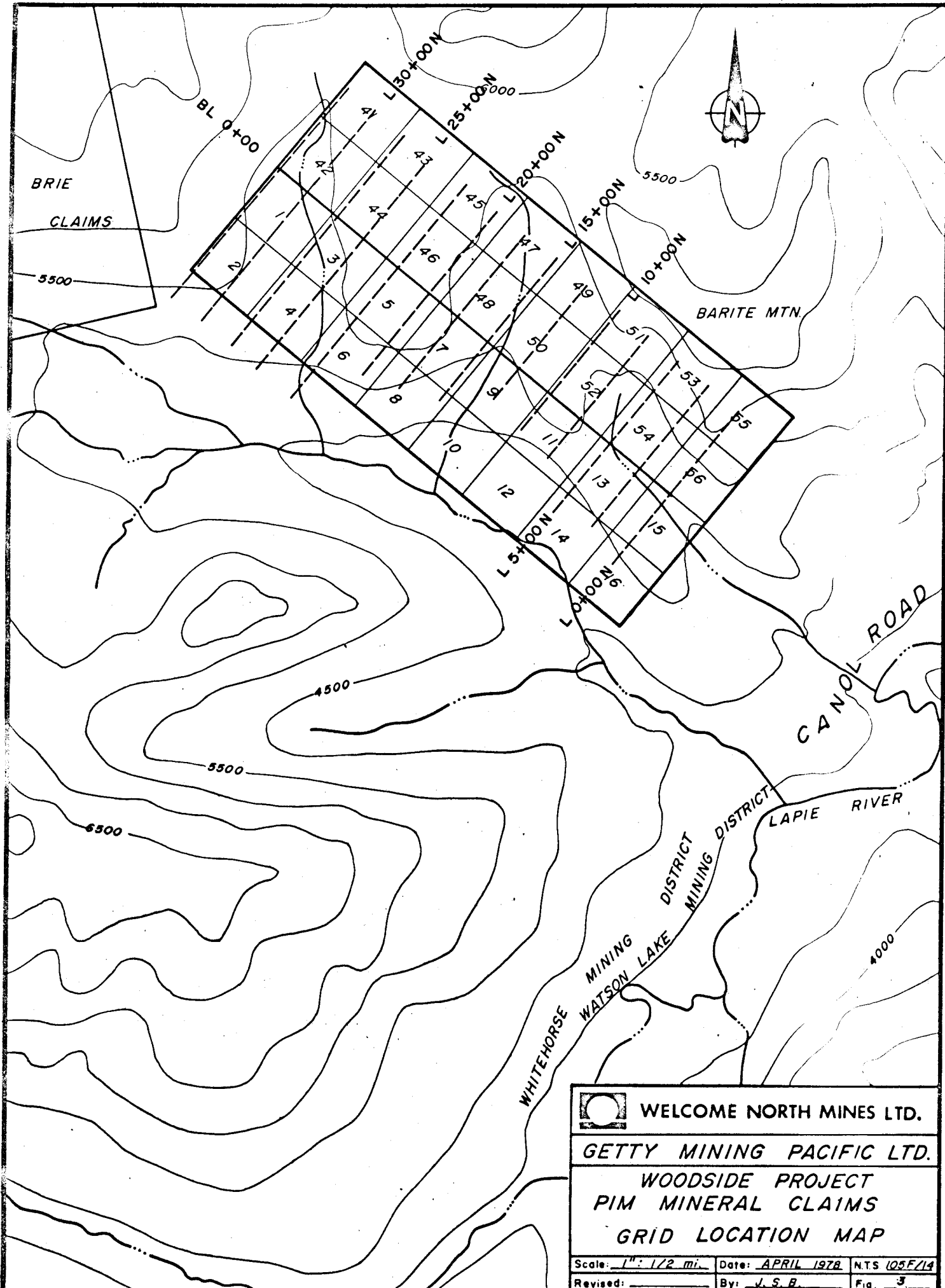
CANOL ROAD

LAPIE RIVER

WHITEHORSE
MINING DISTRICT
WATSON LAKE
MINING DISTRICT

 WELCOME NORTH MINES LTD.
GETTY MINING PACIFIC LTD.
WOODSIDE PROJECT
PIM MINERAL CLAIMS
CLAIM LOCATION MAP

Scale 1" = 1/2 mi.	Date: APRIL 1978	NTS 105F/14
Revised _____	By: J. S. B.	Fig. 7




BRIE
CLAIMS

BARITE MTN

CANOL ROAD

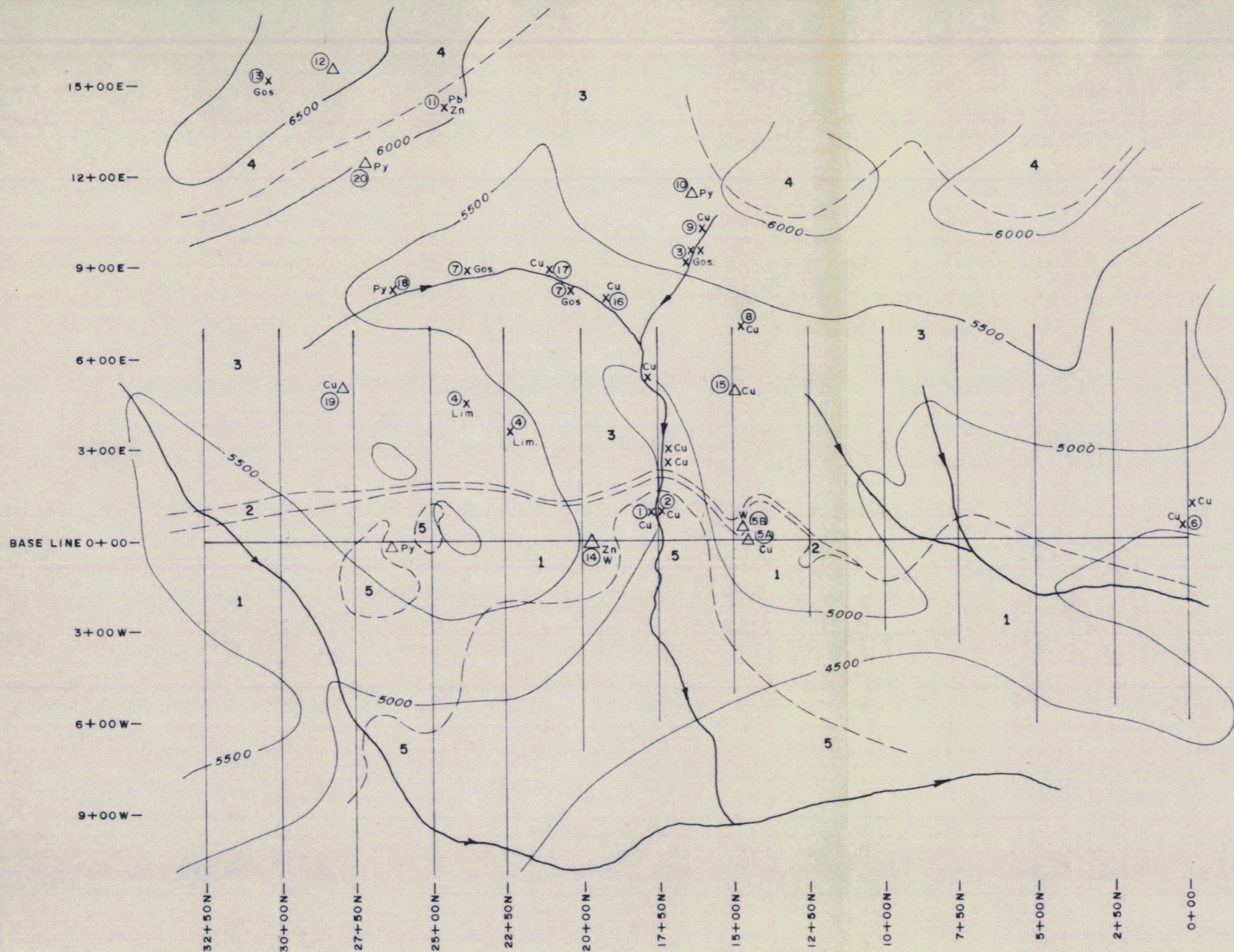
LAPIE RIVER

WHITEHORSE
MINING DISTRICT
WATSON LAKE
MINING DISTRICT

 WELCOME NORTH MINES LTD.
GETTY MINING PACIFIC LTD.
WOODSIDE PROJECT
PIM MINERAL CLAIMS
GRID LOCATION MAP

Scale: 1" = 1/2 mi. Date: APRIL 1978. NTS 105F/14
Revised: _____ By: J. S. B. Fig. 3

barium. Assays were for the most part taken from grab samples and represent maximum values for each occurrence. Tables 1 to 4 illustrate assay results. Fig. 4 shows mineral occurrence locations.



LEGEND

- CRETACEOUS (Ki)**
 5 Bacon Creek Stock Quartz Monzonite
- SILURIAN (RRupc)**
 4 Dolomitic Sandstone and Dolomite
- PROTEROZOIC AND LOWER CAMBRIAN**
 3 Phyllitic Unit
 2 Marble
 1 Calc-Silicate
- x Mineral Occurrence (Float)
 Δ Mineral Occurrence (In Place)
 ⑦ Mineral Occurrence Number
 Cu Chalcopyrite
 Zn Sphalerite
 W Scheelite
 Lim Limonite Stained Brecciated Phyllite
 Gos Gossanous Material
 Pb Galena
 Py Pyrite
 --- Geological Contact



WELCOME NORTH MINES LTD.
GETTY MINING PACIFIC LTD.
WOODSIDE PROJECT
SUMMARY GEOLOGY
PIM CLAIMS

Scale 1:15000 Date DEC. 1978 NTS
 Revised By T.M. Fig. 4

Table 1: Assay results of copper bearing quartz veins and float

Mineral Occurrence Number	Sample Number	Cu %	Assay		Description
			oz/ton Ag	oz/ton Au	
2	8CP-18	2.20 0.15	< 0.05 < 0.05	< 0.002 0.002	-chalcopyrite bearing quartz float
5A	8CP-34D-1	1.09	< 0.05	< 0.002	-grab of quartz lens in place, dimensions 0.5x5m
	8CP-34D-2	0.23	< 0.05	< 0.002	-2m chip sample across 0.5 quartz vein and enclosing metasediments
6	8CP-42	0.59	< 0.05	< 0.002	-chalcopyrite bearing quartz float
8	8CP	10,500 ppm	-	-	-float, possible piece of altered wall rock enclosing quartz vein
15	8CP-17	0.23	< 0.05	< 0.002	-0.5x10 m quartz vein -grab sample
17	8CP-18-2	14.8	0.55	0.005	-grab of chalcopyrite bearing quartz float
19	8CP-18-4	4.75	0.26	< 0.002	-1x7 m quartz vein -grab sample

TABLE 2: Results of geochemical analysis of gossanous float

Mineral Occurrence Number	Sample Number	Location	Cu	Pb	Zn	Ag
			ppm	ppm	ppm	ppm
3	8CP-23	4+10E, 23+90N	20	28	138	0.1
7	8CP-54	8+20E, 20+ 20N	16	32	900	0.1
	8CP-62	8+75E, 30+50N	280	36	1140	1.0

TABLE 3: Analytical results of analysis of skarn material

Mineral Occ. No.	14	14	5B
Sample No.	8CP-66	8CP-1D	8CP-34C-1
Location	0+50W 19+50N	0+50W 19+50N	0+40E 14+50N
Zn	1.01%	440 ppm	460 ppm
Au	0.002 oz/ton	-	-
Ag	0.05 oz/ton	-	-
Pb	0.01%	-	-
Cu	-	710 ppm	55 ppm
W	1350 ppm	0.40%	0.65%
Sn	20 ppm	100 ppm	76 ppm

TABLE 4: Analytical results from other mineral occurrences

Mineral Occ. No.	Sample No.	Location		Cu ppm	Pb ppm	Zn ppm	Ag ppm	Ba ppm
4	8CP-24	4+10E	23+90N	760	16	16	0.1	-
	8CP-64	3+60E	22+10N	470	32	14	0.1	-
10	8CP-57	11+25E	16+25N	58	88	215	0.3	327
12	8CP-60	15+75E	28+25N	86	26	72	0.1	-
13	8CP-61	15+00E	30+50N	26	64	20	0.1	-
20	8CP-52	12+40E	26+90N	-	-	-	-	1200