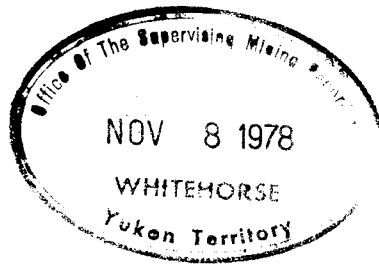


C. A. AGER & ASSOCIATES LTD.

Telephone (604) 536-1154

CONSULTING
GEOPHYSICISTS

15423 34th Ave.
Surrey, B.C. Canada
V3S 4N7



GRAVITY SURVEY
LU CLAIMS AREA



SUMMARY

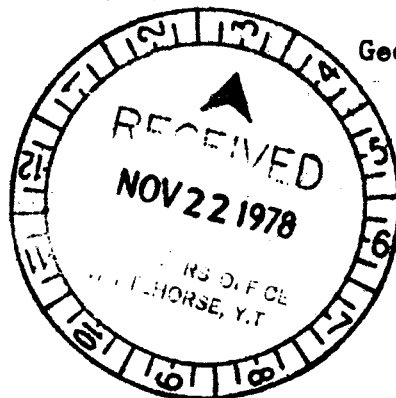
This report presents the results of the gravity survey work over the Lu Claims Grid, Fishhook Creek area, Yukon Territory. The gravity work indicates four gravity high anomalies of possible economic importance. Three of these anomalies are located on the western edge of the grid and are open to the northwest. The fourth anomaly is well defined. Each of these features must be compared to the EM and geological data before drill collar co-ordinates and depths can be specified.

Respectfully submitted,


Charles A. Ager, PhD, PEng.

Geophysicist

090394
September 28, 1978



Commissioner of Yukon Territory

Considered as representation work under
Section 24 of the Quartz Mining Act.

[Signature]

This report has been examined by the
Geological Evaluation Unit and is recom-
mended to the Commissioner to be consid-
ered as representation work in the amount of

This report has been examined by the
Geological Evaluation Unit and is recom-
mended to the Commissioner to be consid-
ered as representation work in the amount of

\$24,332.88

21 Dec/78

[Signature]

Considered as representation work under
Section 24 of the Quartz Mining Act.

B. R. BAXTER
Supervising Mining Recorder

[Signature]
Commissioner of Yukon Territory



TABLE OF CONTENTS

Introduction	page	1
Geological Setting		2
Instrumentation & Survey Procedure		5
Data Reduction		6
Interpretation of Results		8
Recommendations & Conclusions		10
Certificate of Qualifications		11
Cost Statement		12
Appendix		
A. Lu Grid Gravity Data		13
B. Lu Grid Non-Linear Gravity Data		22

LIST OF FIGURES

Figure 1	Location Map - General Area	page	3
Figure 2	Location Map - Lu Claims Grid		4
Figure 3	Elevation Map	Appendix	Leaflet
Figure 4	Complete Bouguer Gravity Map	"	"
Figure 5	Non-Linear Bouguer Gravity Map	"	"
Figure 6	Terrain Effect Map	"	"

LOCATION, DATE OF WORK, CREW

Location: Lu Claims area

Whitehorse Mining District

Fishhook Creek Area, Yukon Territory

NTS 105K/12

62°31' N Latitude by 133°50' W Longitude

Date of Work:

Field Work; August 10 - August 25, 1978

Office Work; September 1 - September 28, 1978

Crew:

D.R. MacQuarrie, B.Sc., party chief

J.G. Ager, B.Sc., geophysical operator

H. Penner, gravity observer

M. Faucher, gravity observer

K. Dieckman, field assistant

J. Legare, field assistant

C.A. Ager, Ph.D., P.Eng., data interpreter

INTRODUCTION

At the request of Mr Larry LeBel, Amax Minerals Exploration, an exploratory gravity survey was conducted over the Lu Claims Grid, Fishhook Creek area, Yukon Territory. The intent of the gravity work was to delineate areas of excess mass which could indicate the presence of Pb-Zn mineralization within the underlying rock units.

The property is located some 40 kilometers northwest of the townsite of Faro, Yukon Territory (Figures 1 and 2). The geographic co-ordinates of the center of the property are $62^{\circ}31'$ N Latitude by $133^{\circ}50'$ W Longitude. The grid is located on the southeastern slopes of a large mountain at elevation ranging between 1400-1850 meters. Access is by helicopter from Faro or Ross River, Yukon Territory.

A brief description of the geological setting is given in the following section by Mr Tony Hitchens of Amax Minerals Exploration. Details of the gravity work and its interpretation follow the geological information.

GEOLOGICAL SETTING

The geology of the LU claims is separated into two blocks by a southwest-northeast trending fault zone or an unexposed Cretaceous quartz monzonite intrusion. North of the break quartz-biotite-sericite andalusite schist, calc-silicate and graphitic schists dip moderately to the northeast. These rocks probably represent the metamorphic equivalent of a greywacke-shale turbidite sequence with a redeposited argillaceous to fairly pure carbonate member. Narrow quartz graphite and quartz-sericite-graphite bands are poorly exposed but appear to be present in both the schist and calc-silicate. South of the break a sequence of schists and phyllites is present in which the lowest exposed rocks are quartz biotite schists and calc-silicate similar to those north of the break but which rapidly grade upward into cherty calc-schist rocks and a thick section of interbedded chlorite phyllite, and amphibolite (metabasite).

In outcrop the most visible structural feature is a lustrous crenulation foliation surface on which an earlier compositional banding has been transposed.

Geologic contacts between the schist and calc-silicate are almost parallel to the strike of the crenulation foliation.

Two faults at the north end of the property have repeated the section.

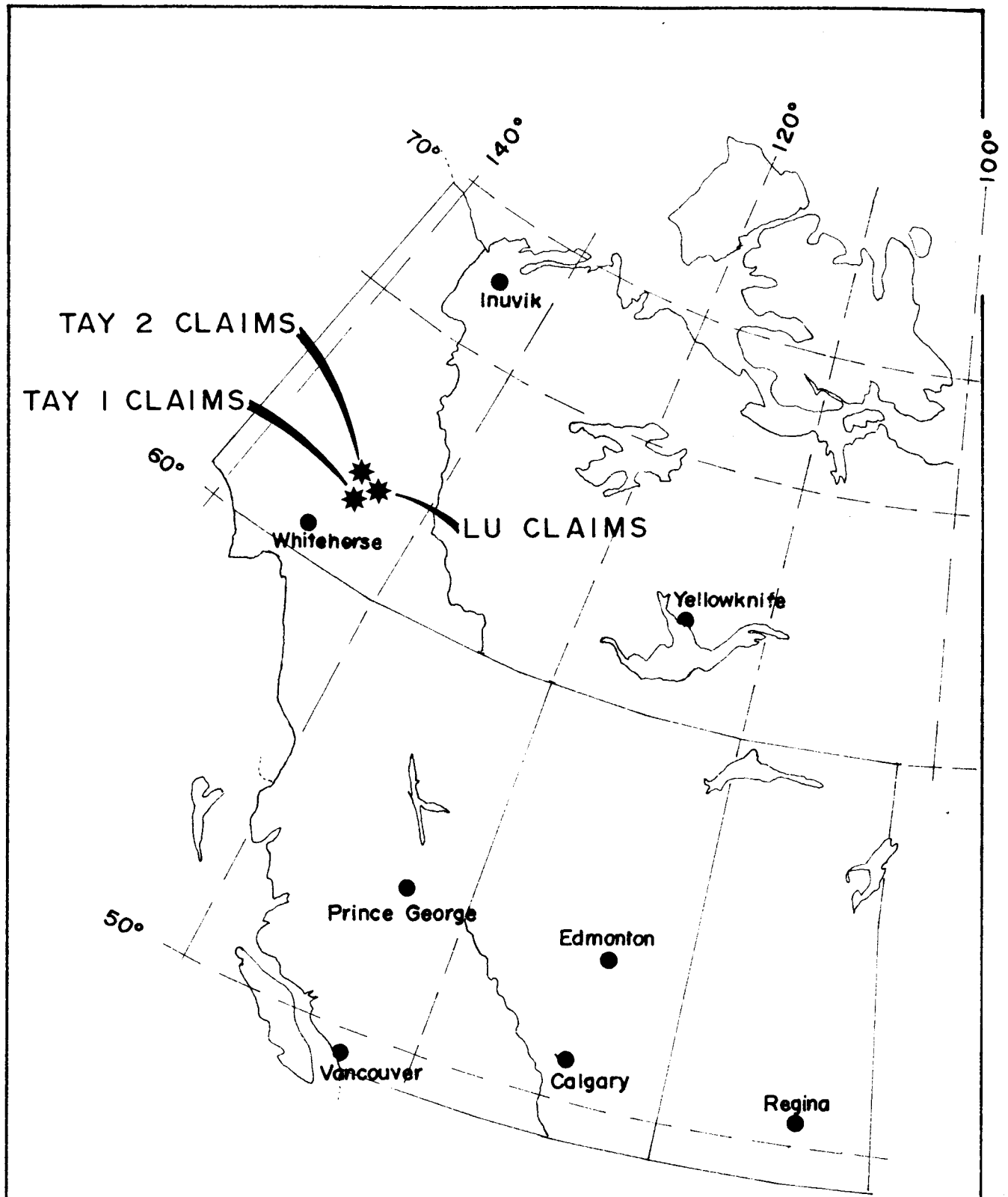
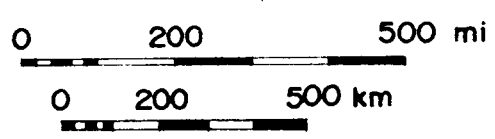
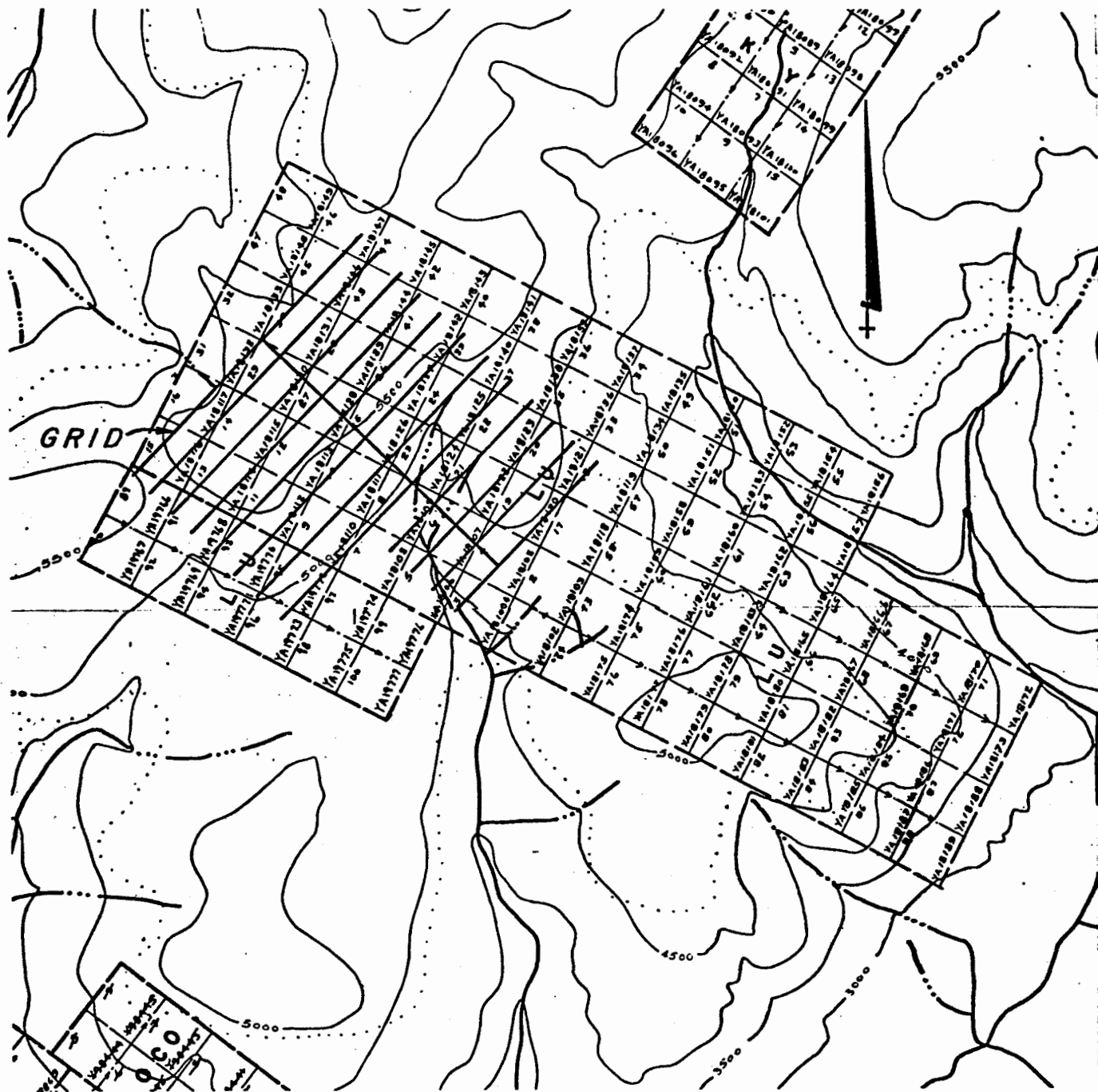


FIG. 1

<i>LOCATION MAP</i>	
GENERAL AREA	
DATE SEPT. 1978	C·A·AGER & ASSOC. Surrey B·C·Canada



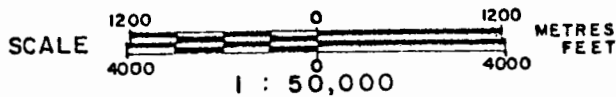


AMAX POTASH LIMITED

ANVIL CREEK PROPERTY
LU CLAIMS

WHITEHORSE MINING DISTRICT — YUKON TERRITORY

CLAIM MAP



Vancouver —

M.P.

N. T. S. Ref. 105 K 5 and 12

FIG. 2

INSTRUMENTATION & SURVEY PROCEDURE

Gravity observations were made using two LaCoste & Romberg Model G gravity meters (serial numbers G52 and G199) with reading accuracy of ± 0.01 mgal. All gravity readings were within the dial ranges 5080-5160 and 4890-5000 for which the dial constants were 1.04525 and 1.05932 mgal/division respectively. Instrument and diurnal drift were accounted for by tying into known base stations within three hour intervals.

Gravity stations were located at 60 meter intervals along pre-cut and picketed lines spaced 240 meters apart as shown on Figure 3. Elevations were measured to the top of pickets at ground level using an electronic level developed by Ager & Associates Ltd. Relative elevations are considered accurate to ± 0.03 meters between stations. The elevation reference for the survey was station GB78-6 which was assigned the value 1545.95 meters (5072.0 feet) as picked from 1:50,000 NTS map sheet 105K/12 and the Amax orthophoto base map for the area. The elevations so determined for the survey grid are relative to this base value and are plotted on Figure 3.

The gravity survey is referenced to a permanent base station (GB78-6) located 20 meters northwest of station I480W+60S. It is located on a large 2m by 2m by 1m granitic boulder. The station is marked with an orange painted post 1.3 meters high.

The absolute value of gravity for the permanent base (GB78-6) was determined by ex-center ties to the National Network station at Whitehorse, Y.T. A complete listing of the data is given in Appendix A.

DATA REDUCTION

As is well known, the observed gravity values (g_0) contain much information of non-interest in mining geophysics. Simply stated, the problem is to separate the effects of the earth (g_E) from the observed gravity field. The map of interest, the Complete Bouguer Gravity Map (Δg_{CB}) is defined as follows:

$$\Delta g_{CB} = g_0 - g_E \quad (1)$$

$$\text{where } g_E = g_L + g_{FA} + g_{BS} + g_T \quad (2)$$

Latitude effect

Free Air effect

Bouguer Slab effect

Terrain effect

Using standard procedures, the Complete Bouguer Gravity Map (Figure 4) was calculated from equations 1 and 2 above. Terrain effects were calculated to a radius of 600 meters about each station using computer techniques of Ager & Associates Ltd. Bouguer slab and terrain densities were taken to be 2.80 g/cc

which corresponds to a linear elevation factor of 0.19128 mgal/meter. The complete Bouguer gravity values are all relative to station B10+1440W which was assigned an arbitrary value of 963.37 mgal (Figure 4).

Generally, in mountainous areas if a linear elevation factor is used in gravity reduction, then, even after terrain corrections, there are still correlations of the Bouguer gravity map with topography. This can most clearly be seen in Figure 3 as will be discussed later. The problem then is to generate a gravity map with minimum correlation to surface topography. This is done by using a non-linear elevation factor equation derived from the data itself. It is found by fitting a second order polynomial using LMS to the elevation v.s. adjusted gravity data. (Adjusted gravity = $\epsilon_0 + \epsilon_L + \epsilon_T$). The equation for gravity as a function of elevation (h) is given below for the Lu Grid:

$$g = 964.76 - 0.16857h - 0.000014172h^2 \quad (3)$$

where

h = station elevation in meters
g = gravity in mgal

and

$$\epsilon_{NL} = \epsilon_0 + \epsilon_L + \epsilon_T - g \quad (4)$$

The non-linear gravity map, Figure 5, is found from Equations 3 and 4 above. It is, in fact, a residual gravity map for the survey area. A listing of the values is given in Appendix B.

INTERPRETATION OF RESULTS

The intent of the gravity work was to delineate gravity high anomalies which could then be compared to EM and geological data in order to judge their economic importance.

Inspection of the C.B. Gravity Map, Figure 4, indicates a very strong correlation of Bouguer gravity with elevation (Figure 3). This indicates that the elevation factor used is too small in absolute amplitude. Solving Equation 3 for the gravity gradient and selecting three specific elevations over the range of the survey we get:

<u>Elevation</u>	<u>Non-Linear Elevation Factor</u>
1400 meters	0.20843 mgal/meter
1600 meters	0.21410 mgal/meter
1800 meters	0.21977 mgal/meter

Clearly, the 0.19128 mgal/meter elevation factor as determined from theoretical calculations and density measurements ($\rho = 2.80$ g/cc) is far too small. Because we know the densities, this means that the vertical gradient of gravity (Free Air effect) is larger in amplitude than predicted by the theoretical equations.

Simply stated, the non-linear gravity map (Figure 5) is the better map to interpret from the gravity point of view.

Interpretation of Figure 5 indicates the following:

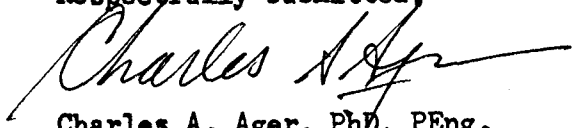
- (1) A gravity low anomaly of -2.00 mgal amplitude occupies the southeastern section of the survey grid. It most certainly maps the presence of less dense intrusive rocks in this area.
- (2) The gravity high residual centered at L960W+900N is a 'terrain effect' residual (see Figure 6) and is of no economic importance.
- (3) The gravity high features, on the western most line, L1440W, and centered at 480N, 120S and 900S are hard to interpret because they are incomplete. These features are open to the west and occur in regions of high topographic effect (see Figure 6). These anomalies should be correlated to the EM data and to the geological information before comments about their economic significance can be made.
- (4) The gravity high anomaly centered at L960W+120N appears to be related, at least in part, to the gravity high features discussed under part 3 above. However, it appears to be elongated about northeast-southwest with a sharp local feature at its center (L960W+120N). It has

a maximum residual amplitude of about +0.75 mgals using the 2.75 mgal contour as the local regional value. The source of the anomaly is most certainly contained within the shaded area bounded by the 3.0 mgal contour. Depth to center of mass is within 50 meters of the surface. In fact the source probably sub-outcrops in this region.

RECOMMENDATIONS & CONCLUSIONS

Four gravity high anomalies of possible economic importance are outlined by the gravity survey work. Three of these anomalies occur on L1440W and are open to the northwest. The fourth anomaly is well defined and centered at L960W+120N. The 3.0 mgal contour most certainly encloses the source for each of these features as shown by the shaded areas on Figure 5. Each anomaly should be compared with the EM and geological data. Coincident and down-dip correlated EM conductors and gravity high residuals within favourable geological units should be drilled. Drill hole locations and depths should be determined only after the above appraisal of the anomalies is made.

Respectfully submitted,



Charles A. Ager, PhD, PEng.

Geophysicist

September 28, 1978

APPENDIX A LU GRID GRAVITY DATA

GB 78-6: Observed Gravity = 981,676.22 mgal (absolute)
= 676.22 mgal (relative)

Bouguer Density = 2.80 g/cc

Elevation Factor = 0.19128 mgal/meter

STATION COORD. (meters)	ELEVATION (meters)	OBSERVED GRAVITY (mgal)	C.B.GRAV (mgal)	TERRAIN EFFECT (mgal)	LATITUDE EFFECT (mgal)
GB 78-6	1545.95	676.22			
BL 0 N 1440W	1777.99	630.57	963.37	2.08	-9.38
BL 0 N 1380W	1786.65	628.67	962.84	1.77	-9.36
BL 0 N 1320W	1786.26	628.84	962.70	1.51	-9.33
BL 0 N 1260W	1778.57	630.59	962.85	1.36	-9.31
BL 0 N 1200W	1765.43	633.48	963.33	1.43	-9.28
BL 0 N 1140W	1752.97	636.07	963.91	1.78	-9.25
BL 0 N 1080W	1728.83	641.28	964.81	2.06	-9.22
BL 0 N 1020W	1707.19	645.77	965.37	2.24	-9.19
BL 0 N 960W	1685.56	650.28	965.87	2.33	-9.16
BL 0 N 900W	1665.56	654.45	966.35	2.45	-9.14
BL 0 N 840W	1643.21	658.86	966.68	2.62	-9.11
BL 0 N 780W	1627.20	661.98	966.67	2.52	-9.08
BL 0 N 720W	1617.49	663.82	966.44	2.28	-9.06
BL 0 N 660W	1608.00	665.65	966.38	2.18	-9.03
BL 0 N 600W	1594.06	668.34	966.44	2.19	-9.01
BL 0 N 540W	1582.84	670.51	966.47	2.17	-8.98
BL 0 N 480W	1565.53	673.90	966.70	2.29	-8.95
BL 0 N 420W	1550.88	677.03	967.07	2.32	-8.93
BL 0 N 360W	1534.12	680.27	967.22	2.40	-8.90
BL 0 N 300W	1523.60	682.40	967.25	2.28	-8.87
BL 0 N 240W	1518.70	683.48	967.10	1.97	-8.85
BL 0 N 180W	1512.04	684.99	967.16	1.77	-8.82
BL 0 N 120W	1505.45	686.23	967.04	1.64	-8.80
BL 0 N 60W	1498.09	687.71	967.06	1.56	-8.77
BL 0 N 00W	1487.59	689.67	967.00	1.53	-8.75
BL 0 N 60E	1481.87	690.87	967.13	1.53	-8.72
BL 0 N 120E	1478.65	691.72	967.24	1.37	-8.69
BL 0 N 180E	1479.77	691.65	967.10	1.07	-8.67
BL 0 N 240E	1472.10	693.23	967.25	1.07	-8.64
BL 0 N 300E	1462.19	694.94	967.27	1.25	-8.61
BL 0 N 360E	1455.22	696.36	967.50	1.36	-8.58
BL 0 N 420E	1451.69	696.79	967.38	1.45	-8.55
BL 0 N 480E	1450.34	697.02	967.35	1.43	-8.52
BL 0 N 540E	1450.59	696.94	967.40	1.49	-8.50
BL 0 N 600E	1450.70	696.82	967.24	1.39	-8.47
BL 0 N 660E	1464.70	694.16	967.28	1.39	-8.45
BL 0 N 720E	1479.93	691.21	967.14	1.26	-8.42
BL 0 N 780E	1494.81	688.30	967.14	1.29	-8.39
BL 0 N 840E	1503.18	686.54	967.01	1.29	-8.35
BL 0 N 900E	1507.02	685.66	966.83	1.22	-8.32
BL 0 N 960E	1512.53	684.69	966.92	1.20	-8.29
BL 0 N 1020E	1514.73	684.33	966.95	1.13	-8.26
BL 0 N 1080E	1515.39	684.26	966.96	1.07	-8.24
BL 0 N 1140E	1515.02	684.35	966.96	1.02	-8.21
BL 0 N 1200E	1510.44	685.32	967.01	0.95	-8.18
1500S 1440W	1656.74			1.16	-8.66

1440S	1440W	1656.18	657.17	966.35	1.07	-8.69
1380S	1440W	1654.65	657.65	966.40	0.97	-8.72
1320S	1440W	1652.19	658.28	966.43	0.86	-8.75
1260S	1440W	1648.77	659.29	966.75	0.85	-8.78
1200S	1440W	1644.22	660.28	966.78	0.80	-8.81
1140S	1440W	1622.98	664.56	967.50	1.34	-8.84
1080S	1440W	1629.70			1.37	-8.87
1020S	1440W	1655.79	657.46	966.56	1.28	-8.90
960S	1440W	1676.82	652.99	966.38	1.56	-8.92
900S	1440W	1689.48	650.19	966.12	1.70	-8.94
840S	1440W	1708.30	645.80	965.49	1.89	-8.97
780S	1440W	1729.89	640.51	964.54	2.14	-9.01
720S	1440W	1751.08	634.74	963.23	2.58	-9.04
660S	1440W	1763.37	632.37	963.36	2.76	-9.07
600S	1440W	1768.87	631.08	963.20	2.87	-9.10
540S	1440W	1764.79	632.01	963.12	2.67	-9.14
480S	1440W	1741.02			1.77	-9.18
420S	1440W	1735.21	639.37	963.76	1.68	-9.21
360S	1440W	1726.26	641.81	964.34	1.56	-9.24
300S	1440W	1724.20	642.49	964.56	1.53	-9.27
240S	1440W	1728.33	641.69	964.55	1.56	-9.30
180S	1440W	1734.82	640.38	964.54	1.65	-9.33
120S	1440W	1748.09	637.39	964.23	1.81	-9.36
60S	1440W	1764.09	633.78	963.85	2.02	-9.39
60N	1440W	1795.93	626.29	962.66	2.26	-9.42
120N	1440W	1810.54	622.96	962.21	2.37	-9.45
180N	1440W	1825.37	619.23	961.74	2.82	-9.48
240N	1440W	1838.61	615.73	961.89	3.97	-9.51
300N	1440W	1836.05	615.47	961.78	4.64	-9.54
360N	1440W	1793.48	626.02	962.92	3.41	-9.57
420N	1440W	1753.97	635.37	964.68	3.39	-9.59
480N	1440W	1719.21	643.61	966.18	3.34	-9.62
540N	1440W	1696.60	648.21	966.19	3.09	-9.65
600N	1440W	1676.02	652.75	966.53	2.85	-9.67
660N	1440W	1657.02	656.85	966.72	2.61	-9.70
720N	1440W	1639.28	660.34	966.58	2.41	-9.73
780N	1440W	1623.74			2.22	-9.77
840N	1440W	1612.50	665.75	966.47	2.06	-9.79
900N	1440W	1611.48	665.97	966.08	1.68	-9.82
960N	1440W	1613.69	665.44	965.66	1.40	-9.85
1020N	1440W	1625.23	663.21	965.25	1.04	-9.88
1080N	1440W	1623.97	663.66	965.40	1.01	-9.91
1140N	1440W	1623.23	663.89	965.50	1.05	-9.94
1200N	1440W	1610.43			2.01	-9.97
1500S	1200W	1621.93	664.39	967.02	0.96	-8.58
1440S	1200W	1621.96	664.43	966.95	0.88	-8.61
1380S	1200W	1620.65	664.72	966.87	0.79	-8.64
1320S	1200W	1620.34	664.75	966.75	0.73	-8.67
1260S	1200W	1621.03	664.65	966.75	0.73	-8.70
1200S	1200W	1624.32	663.97	966.75	0.80	-8.72
1140S	1200W	1634.29	661.82	966.57	0.89	-8.75
1080S	1200W	1645.66	659.45	966.50	1.05	-8.78
1020S	1200W	1654.53	657.59	966.53	1.26	-8.81
960S	1200W	1669.83			1.49	-8.84
900S	1200W	1686.72	650.43	965.93	1.73	-8.87
840S	1200W	1708.02	645.54	965.27	1.91	-8.90
780S	1200W	1735.11	639.34	964.40	2.08	-8.92
720S	1200W	1759.88	633.51	963.42	2.23	-8.95
660S	1200W	1780.77	628.65	962.66	2.36	-8.98
600S	1200W	1787.96	627.18	962.27	2.09	-9.01

540S	1200W	1791.18	626.65	962.21	1.97	-9.04
480S	1200W	1786.45	627.85	962.19	1.69	-9.07
420S	1200W	1780.06	630.21	963.13	1.51	-9.09
360S	1200W	1773.24	631.16	962.61	1.38	-9.12
300S	1200W	1762.57	634.03	963.13	1.10	-9.15
240S	1200W	1761.67	634.39	963.32	1.13	-9.18
180S	1200W	1755.19	635.95	963.51	1.02	-9.20
120S	1200W	1755.82	635.86	963.58	1.11	-9.24
60S	1200W	1758.55	635.08	963.45	1.26	-9.27
60N	1200W	1776.60	630.65	962.79	1.62	-9.31
120N	1200W	1787.29	628.12	962.43	1.78	-9.35
180N	1200W	1792.77	626.82	962.11	1.73	-9.37
240N	1200W	1794.69	626.48	962.01	1.54	-9.40
300N	1200W	1793.20	626.76	962.02	1.67	-9.42
360N	1200W	1786.73	628.02	962.21	1.87	-9.45
420N	1200W	1759.93	634.42	963.13	1.74	-9.48
480N	1200W	1733.95	640.34	964.65	2.15	-9.51
540N	1200W	1716.63	643.85	965.15	2.48	-9.54
600N	1200W	1703.59	646.27	965.30	2.73	-9.57
660N	1200W	1695.72	647.55	965.18	2.86	-9.60
720N	1200W	1692.71	647.99	965.07	2.91	-9.62
780N	1200W	1691.99	648.05	965.01	2.96	-9.65
840N	1200W	1684.75	649.72	965.28	2.97	-9.67
900N	1200W	1674.29	651.76	965.15	2.82	-9.70
960N	1200W	1667.32	653.20	964.99	2.59	-9.73
1020N	1200W	1665.52	654.27	965.36	2.26	-9.76
1080N	1200W	1668.59	654.12	965.37	1.86	-9.79
1140N	1200W	1672.35	653.72	965.38	1.58	-9.82
1200N	1200W	1673.50	653.68	965.35	1.41	-9.85
1500S	960W	1574.94	673.83	967.44	0.82	-8.47
1440S	960W	1580.86	672.68	967.28	0.71	-8.50
1380S	960W	1582.03	672.38	967.22	0.76	-8.53
1320S	960W	1578.50	673.01	967.40	1.00	-8.55
1260S	960W	1582.51	672.24	967.66	1.29	-8.58
1200S	960W	1599.03	668.85	967.42	1.31	-8.61
1140S	960W	1617.04	664.93	966.94	1.34	-8.64
1080S	960W	1633.53	661.68	966.88	1.40	-8.67
1020S	960W	1650.42	658.15	966.63	1.48	-8.70
960S	960W	1669.45	654.04	966.19	1.53	-8.72
900S	960W	1687.71	649.96	965.61	1.56	-8.75
840S	960W	1706.13	645.83	965.01	1.60	-8.78
780S	960W	1720.55	642.59	964.46	1.57	-8.81
720S	960W	1738.23	638.52	963.86	1.67	-8.83
660S	960W	1752.63	635.16	963.41	1.86	-8.86
600S	960W	1756.59	634.37	963.26	1.76	-8.88
540S	960W	1751.64	635.55	963.23	1.54	-8.92
480S	960W	1741.43	637.97	963.58	1.44	-8.94
420S	960W	1729.71	640.73	964.14	1.51	-8.97
360S	960W	1720.52	642.62	964.42	1.69	-9.00
300S	960W	1707.82	645.52	965.01	1.84	-9.03
240S	960W	1691.63	648.84	965.33	1.96	-9.06
180S	960W	1676.47	651.98	965.80	2.22	-9.08
120S	960W	1675.56	652.40	966.02	2.22	-9.11
60S	960W	1674.84	652.52	966.14	2.39	-9.14
60N	960W	1694.60	648.21	965.46	2.30	-9.20
120N	960W	1702.42	647.24	965.90	2.25	-9.23
180N	960W	1711.75	644.34	964.70	2.18	-9.25
240N	960W	1728.60	640.98	964.33	1.98	-9.28
300N	960W	1748.90	636.61	963.57	1.74	-9.31
360N	960W	1772.08	631.51	962.86	1.72	-9.34

420N	960W	1780.41	629.86	962.67	1.61	-9.36
480N	960W	1793.91			1.92	-9.39
540N	960W	1801.93	624.15	961.68	2.26	-9.41
600N	960W	1822.08	618.78	961.17	3.30	-9.45
660N	960W	1844.47	612.57	960.68	4.76	-9.47
720N	960W	1862.14	607.81	960.64	6.14	-9.50
780N	960W	1854.14	610.40	960.10	4.57	-9.53
840N	960W	1832.98	616.33	962.04	4.65	-9.56
900N	960W	1810.33	622.35	962.82	3.77	-9.59
960N	960W	1788.08	627.96	962.46	2.08	-9.61
1020N	960W	1770.50	632.34	963.06	1.69	-9.64
1080N	960W	1754.71	636.20	963.53	1.36	-9.67
1140N	960W	1747.30	638.06	963.69	1.10	-9.70
1200N	960W	1736.90	640.65	964.07	0.91	-9.73
1500S	720W	1554.43	677.93	967.67	0.76	-8.36
1440S	720W	1566.05	675.70	967.68	0.81	-8.39
1380S	720W	1579.86	672.68	967.31	0.85	-8.42
1320S	720W	1592.54	670.07	967.12	0.87	-8.44
1260S	720W	1603.06	667.89	966.93	0.87	-8.47
1200S	720W	1609.69	666.55	966.82	0.86	-8.50
1140S	720W	1621.96	663.93	966.55	0.89	-8.53
1080S	720W	1632.66	661.64	966.32	0.94	-8.56
1020S	720W	1641.12	659.95	966.28	1.00	-8.59
960S	720W	1650.30	657.95	966.12	1.12	-8.62
900S	720W	1665.86	654.48	965.72	1.24	-8.65
840S	720W	1683.13	650.57	965.29	1.43	-8.67
780S	720W	1701.72	646.31	964.90	1.73	-8.70
720S	720W	1707.69	645.20	964.86	1.74	-8.73
660S	720W	1710.66	644.54	964.72	1.72	-8.76
600S	720W	1706.75	645.39	964.65	1.57	-8.78
540S	720W	1700.86	646.49	964.58	1.56	-8.81
480S	720W	1687.64	649.65	965.15	1.51	-8.83
420S	720W	1683.64	650.68	965.67	1.80	-8.86
360S	720W	1678.82	651.21	965.77	2.32	-8.89
300S	720W	1646.46	658.21	966.46	2.23	-8.92
240S	720W	1622.12	663.25	966.99	2.41	-8.95
180S	720W	1605.46	666.43	967.05	2.49	-8.97
120S	720W	1593.83	668.49	967.18	2.82	-9.00
60S	720W	1600.02	667.44	967.02	2.55	-9.03
60N	720W	1632.98	660.64	966.39	2.48	-9.09
120N	720W	1650.26	657.16	966.43	2.73	-9.12
180N	720W	1672.15	652.75	966.25	2.80	-9.15
240N	720W	1694.46	647.89	965.56	2.72	-9.18
300N	720W	1717.66	643.05	965.01	2.61	-9.21
360N	720W	1731.31	640.30	964.59	2.35	-9.24
420N	720W	1747.33	636.78	964.00	2.25	-9.27
480N	720W	1762.49			2.23	-9.29
540N	720W	1778.65	629.86	963.04	2.27	-9.32
600N	720W	1787.66	628.02	962.78	2.16	-9.35
660N	720W	1790.58	627.52	962.58	1.92	-9.37
720N	720W	1790.78	627.60	962.47	1.72	-9.40
780N	720W	1789.42	628.15	962.56	1.55	-9.43
840N	720W	1789.50	628.22	962.47	1.41	-9.46
900N	720W	1790.00	628.24	962.46	1.30	-9.48
960N	720W	1788.31	628.67	962.45	1.22	-9.52
1020N	720W	1781.79	630.42	962.75	1.05	-9.55
1080N	720W	1773.19	632.50	962.95	0.84	-9.57
1140N	720W	1764.07	634.71	963.17	0.63	-9.60
1200N	720W	1756.11	636.53	963.29	0.47	-9.63
1500S	480W	1550.43	678.90	967.92	0.72	-8.27

1440S	480W	1562.32	676.44	967.71	0.71	-8.29
1380S	480W	1571.34	674.64	967.57	0.68	-8.32
1320S	480W	1581.43	672.52	967.32	0.65	-8.35
1260S	480W	1591.49	670.36	967.05	0.55	-8.38
1200S	480W	1599.64	668.75	966.98	0.66	-8.41
1140S	480W	1607.40	666.96	966.68	0.68	-8.43
1080S	480W	1616.61	664.97	966.44	0.71	-8.47
1020S	480W	1624.27	663.25	966.22	0.76	-8.49
960S	480W	1632.15	661.55	966.06	0.83	-8.52
900S	480W	1637.91	660.24	965.90	0.90	-8.54
840S	480W	1644.53	658.84	965.81	0.97	-8.57
780S	480W	1650.82	657.26	965.47	1.03	-8.60
720S	480W	1653.55	656.47	965.23	1.09	-8.63
660S	480W	1650.80	657.27	965.52	1.13	-8.65
600S	480W	1646.11	657.96	965.34	1.19	-8.68
540S	480W	1645.43	658.27	965.49	1.18	-8.71
480S	480W	1643.26	658.98	965.78	1.21	-8.74
420S	480W	1642.23	659.23	965.98	1.38	-8.76
360S	480W	1639.57	659.68	966.24	1.73	-8.79
300S	480W	1620.79	663.40	966.37	1.75	-8.82
240S	480W	1590.65	669.58	966.71	1.71	-8.84
180S	480W	1571.60	673.19	966.72	1.78	-8.87
120S	480W	1558.67	675.67	966.85	1.93	-8.90
60S	480W	1550.22	677.11	967.12	2.41	-8.93
60N	480W	1587.60	669.54	966.81	2.57	-8.98
120N	480W	1609.47	665.77	966.85	2.93	-9.01
180N	480W	1629.07	661.12	966.75	3.05	-9.04
240N	480W	1645.87	657.66	966.38	2.96	-9.07
300N	480W	1668.11	653.32	966.20	2.90	-9.10
360N	480W	1684.38	650.17	965.96	2.71	-9.12
420N	480W	1695.40	648.03	965.65	2.47	-9.15
480N	480W	1703.56	646.43	965.41	2.29	-9.18
540N	480W	1707.92	645.62	965.22	2.11	-9.21
600N	480W	1711.74	644.84	965.03	1.99	-9.23
660N	480W	1716.85	643.77	964.80	1.89	-9.26
720N	480W	1719.39	643.26	964.71	1.76	-9.29
780N	480W	1721.84	643.04	964.70	1.62	-9.32
840N	480W	1726.03	642.23	964.50	1.46	-9.35
900N	480W	1729.29	641.72	964.44	1.31	-9.37
960N	480W	1728.33	641.99	964.34	1.15	-9.40
1020N	480W	1731.04	641.43	964.10	0.98	-9.43
1080N	480W	1732.13	641.37	964.06	0.82	-9.46
1140N	480W	1734.95	640.74	963.79	0.67	-9.49
1200N	480W	1740.20	639.77	963.70	0.57	-9.52
1500S	240W	1557.33	677.57	967.74	0.42	-8.15
1440S	240W	1564.61	676.10	967.63	0.42	-8.17
1380S	240W	1574.38	673.95	967.33	0.42	-8.20
1320S	240W	1576.96	673.62	967.41	0.38	-8.23
1260S	240W	1582.25	672.36	967.14	0.38	-8.26
1200S	240W	1586.46	671.43	967.02	0.40	-8.28
1140S	240W	1590.71	670.41	966.81	0.43	-8.31
1080S	240W	1593.53	669.81	966.76	0.47	-8.34
1020S	240W	1595.44	669.36	966.70	0.52	-8.37
960S	240W	1598.27	668.82	966.72	0.58	-8.40
900S	240W	1601.62	667.96	966.53	0.64	-8.43
840S	240W	1602.42	667.75	966.50	0.70	-8.46
780S	240W	1602.89	667.51	966.39	0.76	-8.48
720S	240W	1602.10	667.55	966.31	0.81	-8.51
660S	240W	1600.49	667.88	966.35	0.86	-8.54
600S	240W	1601.16	667.76	966.34	0.87	-8.57

540S	240W	1604.21	667.09	966.21	0.86	-8.60
480S	240W	1605.90	666.78	966.22	0.88	-8.62
420S	240W	1604.97	666.98	966.28	0.95	-8.66
360S	240W	1600.80	667.63	966.22	1.07	-8.68
300S	240W	1591.63	669.42	966.52	1.36	-8.71
240S	240W	1580.94	671.30	966.41	1.43	-8.73
180S	240W	1568.98	674.01	966.85	1.48	-8.76
120S	240W	1554.70	676.84	966.88	1.44	-8.79
60S	240W	1533.44	680.96	966.95	1.49	-8.82
60N	240W	1525.58	681.87	967.00	2.19	-8.88
120N	240W	1546.37	677.69	966.97	2.40	-8.91
180N	240W	1571.02	673.06	967.22	2.58	-8.93
240N	240W	1596.33	667.99	967.07	2.69	-8.96
300N	240W	1619.59	663.41	967.05	2.81	-8.98
360N	240W	1631.13	661.35	967.01	2.67	-9.02
420N	240W	1634.91	660.63	966.69	2.38	-9.05
480N	240W	1638.22	660.10	966.64	2.25	-9.08
540N	240W	1645.89	658.59	966.51	2.20	-9.11
600N	240W	1654.71	656.99	966.50	2.13	-9.14
660N	240W	1661.96	655.59	966.30	1.98	-9.17
720N	240W	1667.76	654.42	966.02	1.73	-9.19
780N	240W	1671.38	653.67	965.72	1.56	-9.22
840N	240W	1673.27	653.47	965.69	1.40	-9.25
900N	240W	1677.12	652.67	965.51	1.31	-9.28
960N	240W	1681.77	651.67	965.31	1.25	-9.30
1020N	240W	1685.78	650.87	965.19	1.19	-9.33
1080N	240W	1695.15	648.88	964.95	1.18	-9.36
1140N	240W	1700.96	647.62	964.75	1.15	-9.39
1200N	240W	1700.56	647.68	964.61	1.06	-9.42
1500S	00W	1545.21	679.95	967.71	0.21	-8.02
1440S	00W	1552.24	678.46	967.58	0.25	-8.05
1380S	00W	1555.98	677.58	967.43	0.28	-8.07
1320S	00W	1557.62	677.25	967.41	0.31	-8.10
1260S	00W	1561.18	676.28	967.17	0.39	-8.13
1200S	00W	1558.53	676.97	967.31	0.38	-8.16
1140S	00W	1558.76	676.90	967.30	0.43	-8.19
1080S	00W	1561.28	676.28	967.20	0.49	-8.22
1020S	00W	1564.44	675.60	967.18	0.57	-8.24
960S	00W	1562.10	676.13	967.23	0.57	-8.27
900S	00W	1564.35	675.46	967.04	0.65	-8.30
840S	00W	1562.29	675.69	966.87	0.67	-8.33
780S	00W	1560.94	675.84	966.77	0.71	-8.36
720S	00W	1555.02	677.06	966.82	0.70	-8.39
660S	00W	1551.96	677.72	966.87	0.70	-8.42
600S	00W	1558.77	676.38	966.83	0.74	-8.45
540S	00W	1558.18	676.40	966.71	0.73	-8.48
480S	00W	1559.76	675.86	966.51	0.81	-8.51
420S	00W	1557.79	676.14	966.45	0.88	-8.54
360S	00W	1551.63	677.26	966.45	0.96	-8.57
300S	00W	1540.59	679.48	966.58	1.01	-8.60
240S	00W	1531.38	681.29	966.67	1.08	-8.63
180S	00W	1522.56	683.25	966.94	1.11	-8.66
120S	00W	1511.25	685.43	966.89	1.08	-8.69
60S	00W	1498.67	687.79	966.90	1.15	-8.71
60N	00W	1497.05	687.82	966.82	1.41	-8.77
120N	00W	1523.38	682.87	966.88	1.41	-8.80
180N	00W	1544.50	678.74	966.90	1.55	-8.83
240N	00W	1552.60	677.17	966.99	1.68	-8.85
300N	00W	1557.72	676.29	967.04	1.67	-8.88
360N	00W	1560.72	675.66	967.03	1.74	-8.91

420N	00W	1556.11	676.61	967.37	2.04	-8.94
480N	00W	1558.23	676.07	967.51	2.35	-8.97
540N	00W	1567.94	674.04	967.34	2.38	-9.00
600N	00W	1583.28	671.14	967.09	2.12	-9.03
660N	00W	1607.00	666.66	966.68	1.68	-9.06
720N	00W	1619.48	664.45	966.54	1.40	-9.09
780N	00W	1622.63	663.88	966.34	1.20	-9.12
840N	00W	1625.14	663.48	966.33	1.14	-9.15
900N	00W	1626.97	663.14	966.36	1.18	-9.17
960N	00W	1637.69	661.03	966.16	1.07	-9.20
1020N	00W	1645.22	659.44	965.92	1.01	-9.23
1080N	00W	1649.66	658.70	965.97	0.97	-9.26
1140N	00W	1651.94	658.22	965.92	1.00	-9.29
1200N	00W	1654.37	657.59	965.76	1.04	-9.32
480S	240E	1530.54	681.96	966.99	0.67	-8.41
420S	240E	1522.69	683.50	967.04	0.71	-8.43
360S	240E	1515.17	684.94	967.10	0.79	-8.46
300S	240E	1504.64	687.09	967.29	0.88	-8.49
240S	240E	1498.34	688.44	967.40	0.88	-8.52
180S	240E	1493.94	689.01	967.07	0.85	-8.55
120S	240E	1479.03	691.96	967.24	0.95	-8.58
60S	240E	1471.09	693.42	967.27	1.06	-8.60
60N	240E	1476.30	692.32	967.31	1.26	-8.67
120N	240E	1489.44	689.70	967.19	1.28	-8.70
180N	240E	1504.46	686.80	967.16	1.31	-8.73
240N	240E	1521.30	683.43	967.01	1.33	-8.75
300N	240E	1541.91	679.46	966.95	1.33	-8.78
360N	240E	1559.09	676.11	966.85	1.33	-8.81
420N	240E	1578.63	672.38	966.86	1.35	-8.84
480N	240E	1593.36	669.63	966.84	1.28	-8.86
540N	240E	1600.12	668.60	967.00	1.21	-8.89
600N	240E	1605.34	667.52	966.59	0.92	-8.92
660N	240E	1607.85	667.26	966.49	0.63	-8.95
720N	240E	1611.46	666.41	966.19	0.51	-8.98
780N	240E	1617.14	665.23	966.00	0.45	-9.01
840N	240E	1620.91	664.49	965.95	0.44	-9.04
900N	240E	1625.20	663.54	965.79	0.44	-9.06
960N	240E	1627.82	662.85	965.59	0.45	-9.09
1020N	240E	1621.16	664.28	965.76	0.50	-9.12
1080N	240E	1617.90	664.81	965.70	0.57	-9.15
1140N	240E	1617.79	664.89	965.86	0.69	-9.18
1200N	240E	1613.04	665.80	965.99	0.84	-9.20
480S	480E	1494.25	689.11	967.32	0.69	-8.30
420S	480E	1487.95	690.24	967.23	0.69	-8.32
360S	480E	1482.42	691.25	967.15	0.70	-8.36
300S	480E	1472.58	693.24	967.24	0.71	-8.39
240S	480E	1466.77	694.22	967.06	0.68	-8.41
180S	480E	1458.92	695.82	967.12	0.67	-8.43
120S	480E	1458.54	695.96	967.16	0.67	-8.46
60S	480E	1449.38	697.48	967.19	0.96	-8.49
60N	480E	1482.25	690.82	967.32	1.52	-8.55
120N	480E	1506.37	686.00	967.28	1.71	-8.58
180N	480E	1526.72	682.19	967.36	1.73	-8.60
240N	480E	1545.63	678.69	967.37	1.66	-8.63
300N	480E	1560.48	676.06	967.16	1.27	-8.66
360N	480E	1570.39	674.25	966.97	1.02	-8.69
420N	480E	1577.68	672.97	966.79	0.76	-8.72
480N	480E	1583.54	672.06	966.82	0.61	-8.75
540N	480E	1588.61	671.04	966.65	0.51	-8.77
600N	480E	1593.39	669.97	966.39	0.43	-8.80

660N	480E	1596.70	669.35	966.32	0.38	-8.83
720N	480E	1598.19	669.02	966.21	0.34	-8.86
780N	480E	1596.87	669.54	966.42	0.32	-8.89
840N	480E	1598.67	668.99	966.24	0.37	-8.92
900N	480E	1597.36	669.25	966.27	0.42	-8.95
960N	480E	1597.84	669.00	966.21	0.54	-8.97
1020N	480E	1598.72	668.59	966.11	0.71	-9.00
1080N	480E	1596.42	669.03	966.26	0.89	-9.03
1140N	480E	1590.77	670.03	966.35	1.09	-9.06
1200N	480E	1585.80	670.84	966.53	1.45	-9.09
480S	720E	1452.30	696.98	967.22	0.61	-8.18
420S	720E	1448.38	697.69	967.16	0.53	-8.21
360S	720E	1440.93	699.09	967.18	0.70	-8.24
300S	720E	1428.16	701.34	967.27	1.01	-8.27
240S	720E	1421.90	702.47	967.48	1.33	-8.30
180S	720E	1428.87	701.12	967.38	1.27	-8.33
120S	720E	1444.46	698.22	967.53	1.37	-8.36
60S	720E	1466.55	693.94	967.36	1.27	-8.38
60N	720E	1493.70	688.42	966.99	1.29	-8.44
120N	720E	1511.68	685.00	966.99	1.30	-8.47
180N	720E	1528.81	681.81	966.99	1.25	-8.50
240N	720E	1545.13	678.92	967.05	1.10	-8.53
300N	720E	1554.13	677.44	967.01	0.84	-8.55
360N	720E	1561.55	676.15	966.88	0.61	-8.58
420N	720E	1567.55	675.03	966.78	0.46	-8.61
480N	720E	1572.13	674.25	966.68	0.35	-8.64
540N	720E	1575.52	673.61	966.61	0.30	-8.67
600N	720E	1577.88	673.09	966.49	0.27	-8.70
660N	720E	1578.76	672.97	966.51	0.28	-8.73
720N	720E	1577.26	673.22	966.46	0.29	-8.76
780N	720E	1575.64	673.39	966.34	0.34	-8.78
840N	720E	1573.18	673.88	966.41	0.42	-8.81
900N	720E	1572.96	673.78	966.39	0.57	-8.84
960N	720E	1569.78	674.41	966.58	0.76	-8.86
1020N	720E	1565.42	675.06	966.59	0.98	-8.89
1080N	720E	1559.14	676.12	966.68	1.25	-8.93
1140N	720E	1550.22	677.79	966.85	1.48	-8.95
1200N	720E	1539.12	679.83	967.00	1.74	-8.98
480S	960E	1405.11	705.58	966.83	0.53	-8.06
420S	960E	1403.80	705.83	966.98	0.71	-8.09
360S	960E	1402.23	705.83	967.13	1.20	-8.12
300S	960E	1407.94	704.52	967.37	1.58	-8.15
240S	960E	1427.74	700.66	967.32	1.73	-8.17
180S	960E	1454.82	695.66	967.50	1.76	-8.20
120S	960E	1479.92	690.96	967.54	1.72	-8.23
60S	960E	1498.32	687.44	967.24	1.47	-8.27
60N	960E	1524.87	682.48	966.89	1.05	-8.32
120N	960E	1535.55	680.60	966.95	0.98	-8.35
180N	960E	1544.07	679.05	966.91	0.87	-8.37
240N	960E	1553.34	677.40	966.96	0.83	-8.40
300N	960E	1561.63	675.78	966.88	0.82	-8.43
360N	960E	1568.48	674.39	966.76	0.81	-8.46
420N	960E	1569.59	674.22	966.62	0.65	-8.49
480N	960E	1569.26	674.30	966.50	0.55	-8.52
540N	960E	1566.93	674.82	966.45	0.46	-8.55
600N	960E	1561.19	676.12	966.52	0.35	-8.58
660N	960E	1558.73	675.72	966.62	0.35	-8.61
720N	960E	1557.97	675.87	966.65	0.41	-8.64
780N	960E	1555.71	677.26	966.67	0.50	-8.67
840N	960E	1553.68	677.40	966.57	0.68	-8.70

900N	960E	1548.40	678.48	966.82	0.88	-8.72
960N	960E	1538.88	680.25	966.94	1.03	-8.75
1020N	960E	1529.95	681.78	967.03	1.37	-8.78
1080N	960E	1517.95	683.78	967.03	1.70	-8.81
1140N	960E	1498.45	687.26	967.00	1.95	-8.84
1200N	960E	1477.50	691.05	967.00	2.20	-8.87
480S	1200E	1387.98	708.66	966.94	0.75	-7.96
420S	1200E	1388.30	708.41	967.15	1.17	-7.99
360S	1200E	1410.95	703.71	966.92	1.33	-8.02
300S	1200E	1440.21	698.33	967.36	1.60	-8.05
240S	1200E	1460.90	694.40	967.45	1.67	-8.07
180S	1200E	1477.18	691.25	967.33	1.62	-8.10
120S	1200E	1491.01	688.77	967.26	1.41	-8.13
60S	1200E	1502.42	686.70	967.18	1.25	-8.16
60N	1200E	1515.57	684.53	966.99	0.77	-8.21
120N	1200E	1522.01	683.31	966.87	0.67	-8.24
180N	1200E	1526.03	682.48	966.68	0.57	-8.27
240N	1200E	1527.83	682.45	966.89	0.49	-8.30
300N	1200E	1529.61	682.19	966.90	0.45	-8.33
360N	1200E	1529.79	682.09	966.77	0.42	-8.36
420N	1200E	1531.69	681.71	966.73	0.41	-8.38
480N	1200E	1532.83	681.42	966.63	0.41	-8.41
540N	1200E	1534.02	681.24	966.66	0.43	-8.44
600N	1200E	1534.80	681.14	966.72	0.45	-8.46
660N	1200E	1534.74	681.03	966.60	0.50	-8.50
720N	1200E	1534.31	681.09	966.63	0.58	-8.53
780N	1200E	1532.05	681.41	966.60	0.68	-8.55
840N	1200E	1527.15	682.32	966.65	0.79	-8.58
900N	1200E	1518.10	684.04	966.70	0.87	-8.60
960N	1200E	1509.63	685.63	966.75	0.98	-8.63
1020N	1200E	1496.61	688.18	966.81	1.02	-8.67
1080N	1200E	1486.34	690.16	966.88	1.11	-8.70
1140N	1200E	1473.76	692.47	966.86	1.20	-8.72
1170N	1200E	1466.37	693.85	966.94	1.34	-8.74

APPENDIX B: LU GRID NON-LINEAR GRAVITY DATA

Elevation Effect Gravity = g_{EE}

$$g_{EE} = 964.76 - 0.16857h - 0.000014172h^2 \quad \text{mgal} \quad (h = \text{elev in m})$$

STATION COORD. (meters)	ELEVATION (meters)	OBSERVED GRAVITY (mgal)	ADJUSTED GRAVITY (mgal)	ELEVATION EFFECT G (mgal)	NL BOUG GRAVITY (mgal)
BL 0 N 1440W	1777.99	630.57	623.27	620.24	3.03
BL 0 N 1380W	1786.65	628.67	621.08	618.34	2.74
BL 0 N 1320W	1786.26	628.84	621.02	618.43	2.59
BL 0 N 1260W	1778.57	630.59	622.64	620.11	2.53
BL 0 N 1200W	1765.43	633.48	625.63	622.99	2.64
BL 0 N 1140W	1752.97	636.07	628.60	625.71	2.89
BL 0 N 1080W	1728.83	641.28	634.12	630.97	3.15
BL 0 N 1020W	1707.19	645.77	638.82	635.67	3.15
BL 0 N 960W	1685.56	650.28	643.45	640.36	3.09
BL 0 N 900W	1665.56	654.45	647.76	644.63	3.08
BL 0 N 840W	1643.21	658.86	652.37	649.49	2.87
BL 0 N 780W	1627.20	661.98	655.42	652.94	2.48
BL 0 N 720W	1617.49	663.82	657.04	655.02	2.02
BL 0 N 660W	1608.00	665.65	658.80	657.05	1.74
BL 0 N 600W	1594.06	668.34	661.52	660.03	1.49
BL 0 N 540W	1582.84	670.51	663.70	662.43	1.26
BL 0 N 480W	1565.53	673.90	667.24	666.12	1.12
BL 0 N 420W	1550.88	677.03	670.42	669.24	1.18
BL 0 N 360W	1534.12	680.27	673.77	672.80	0.97
BL 0 N 300W	1523.60	682.40	675.81	675.03	0.79
BL 0 N 240W	1518.70	683.48	676.60	676.06	0.53
BL 0 N 180W	1512.04	684.99	677.94	677.47	0.46
BL 0 N 120W	1505.45	686.23	679.07	678.86	0.21
BL 0 N 60W	1498.09	687.71	680.50	680.42	0.08
BL 0 N 00W	1487.59	689.67	682.45	682.63	-0.18
BL 0 N 60E	1481.87	690.87	683.68	683.84	-0.16
BL 0 N 120E	1478.65	691.72	684.40	684.52	-0.11
BL 0 N 180E	1479.77	691.65	684.05	684.28	-0.23
BL 0 N 240E	1472.10	693.23	685.66	685.89	-0.23
BL 0 N 300E	1462.19	694.94	687.58	687.98	-0.39
BL 0 N 360E	1455.22	696.36	689.14	689.44	-0.30
BL 0 N 420E	1451.69	696.79	689.69	690.13	-0.49
BL 0 N 480E	1450.34	697.02	689.93	690.46	-0.53
BL 0 N 540E	1450.59	696.94	689.93	690.41	-0.48
BL 0 N 600E	1450.70	696.82	689.74	690.39	-0.64
BL 0 N 660E	1464.70	694.16	687.10	687.45	-0.35
BL 0 N 720E	1479.93	691.21	684.05	684.25	-0.19
BL 0 N 780E	1494.81	688.30	681.20	681.11	0.09
BL 0 N 840E	1503.18	686.54	679.48	679.34	0.14
BL 0 N 900E	1507.02	685.66	678.56	678.53	0.03
BL 0 N 960E	1512.53	684.69	677.60	677.37	0.23
BL 0 N 1020E	1514.73	684.33	677.20	676.90	0.30
BL 0 N 1080E	1515.39	684.26	677.09	676.76	0.33
BL 0 N 1140E	1515.02	684.35	677.16	676.84	0.32
BL 0 N 1200E	1510.44	685.32	678.09	677.81	0.28
1500S 1440W	1656.74	547.00	539.50	646.58	-107.08

1440S	1440W	1656.18	657.17	649.55	646.70	2.85
1380S	1440W	1654.65	657.65	649.90	647.03	2.87
1320S	1440W	1652.19	658.28	650.39	647.56	2.82
1260S	1440W	1648.77	659.29	651.37	648.30	3.07
1200S	1440W	1644.22	660.28	652.27	649.28	3.00
1140S	1440W	1622.98	664.56	657.06	653.84	3.21
1080S	1440W	1629.70		539.50	652.40	
1020S	1440W	1655.79	657.46	649.84	646.79	3.05
960S	1440W	1676.82	652.99	645.63	642.25	3.39
900S	1440W	1689.48	650.19	642.95	639.51	3.44
840S	1440W	1708.30	645.80	638.72	635.43	3.29
780S	1440W	1729.89	640.51	633.64	630.74	2.90
720S	1440W	1751.08	634.74	628.28	626.12	2.16
660S	1440W	1763.37	632.37	626.06	623.44	2.62
600S	1440W	1768.87	631.08	624.84	622.23	2.61
540S	1440W	1764.79	632.01	625.54	623.13	2.42
480S	1440W	1741.02		539.59	628.32	
420S	1440W	1735.21	639.37	631.84	629.58	2.26
360S	1440W	1726.26	641.81	634.13	631.53	2.60
300S	1440W	1724.20	642.49	634.75	631.98	2.77
240S	1440W	1728.33	641.69	633.95	631.08	2.87
180S	1440W	1734.82	640.38	632.70	629.67	3.03
120S	1440W	1748.09	637.39	629.84	626.77	3.07
60S	1440W	1764.09	633.78	626.41	623.23	3.13
60N	1440W	1795.93	626.29	619.13	616.31	2.82
120N	1440W	1810.54	622.96	615.88	613.10	2.78
180N	1440W	1825.37	619.23	612.57	609.83	2.74
240N	1440W	1838.61	615.73	610.19	606.91	3.28
300N	1440W	1836.05	615.47	610.57	607.48	3.09
360N	1440W	1793.48	626.02	619.86	616.84	3.02
420N	1440W	1753.97	635.37	629.17	625.49	3.68
480N	1440W	1719.21	643.61	637.33	633.06	4.26
540N	1440W	1696.60	648.21	641.65	637.97	3.69
600N	1440W	1676.02	652.75	645.93	642.42	3.51
660N	1440W	1657.02	656.85	649.76	646.52	3.24
720N	1440W	1639.28	660.34	653.02	650.34	2.67
780N	1440W	1623.74		539.45	653.68	
840N	1440W	1612.50	665.75	658.02	656.09	1.93
900N	1440W	1611.48	665.97	657.83	656.31	1.52
960N	1440W	1613.69	665.44	656.99	655.83	1.16
1020N	1440W	1625.23	663.21	654.37	653.36	1.02
1080N	1440W	1623.97	663.66	654.76	653.63	1.13
1140N	1440W	1623.23	663.89	655.00	653.79	1.22
1200N	1440W	1610.43		539.04	656.53	
1500S	1200W	1621.93	664.39	656.77	654.07	2.70
1440S	1200W	1621.96	664.43	656.70	654.06	2.64
1380S	1200W	1620.65	664.72	656.87	654.34	2.53
1320S	1200W	1620.34	664.75	656.81	654.41	2.40
1260S	1200W	1621.03	664.65	656.68	654.26	2.42
1200S	1200W	1624.32	663.97	656.04	653.55	2.49
1140S	1200W	1634.29	661.82	653.96	651.41	2.55
1080S	1200W	1645.66	659.45	651.72	648.97	2.75
1020S	1200W	1654.53	657.59	650.04	647.06	2.99
960S	1200W	1669.83		539.65	643.76	
900S	1200W	1686.72	650.43	643.29	640.11	3.18
840S	1200W	1708.02	645.54	638.55	635.49	3.06
780S	1200W	1735.11	639.34	632.50	629.60	2.89
720S	1200W	1759.88	633.51	626.78	624.20	2.58
660S	1200W	1780.77	628.65	622.03	619.63	2.40
600S	1200W	1787.96	627.18	620.26	618.06	2.21

540S	1200W	1791.18	626.65	619.58	617.35	2.24
480S	1200W	1786.45	627.85	620.47	618.39	2.08
420S	1200W	1780.06	630.21	622.63	619.79	2.84
360S	1200W	1773.24	631.16	623.42	621.28	2.14
300S	1200W	1762.57	634.03	625.98	623.61	2.37
240S	1200W	1761.67	634.39	626.34	623.81	2.53
180S	1200W	1755.19	635.95	627.77	625.22	2.54
120S	1200W	1755.82	635.86	627.73	625.09	2.64
60S	1200W	1758.55	635.08	627.06	624.49	2.57
60N	1200W	1776.60	630.65	622.96	620.54	2.42
120N	1200W	1787.29	628.12	620.55	618.20	2.35
180N	1200W	1792.77	626.82	619.18	617.00	2.18
240N	1200W	1794.69	626.48	618.72	616.58	2.14
300N	1200W	1793.20	626.76	619.01	616.90	2.11
360N	1200W	1786.73	628.02	620.44	618.32	2.12
420N	1200W	1758.93	634.42	626.68	624.41	2.27
480N	1200W	1733.95	640.34	632.98	629.86	3.12
540N	1200W	1716.63	643.85	636.79	633.62	3.16
600N	1200W	1703.59	646.27	639.43	636.45	2.98
660N	1200W	1695.72	647.55	640.81	638.16	2.65
720N	1200W	1692.71	647.99	641.28	638.81	2.47
780N	1200W	1691.99	648.05	641.36	638.97	2.39
840N	1200W	1684.75	649.72	643.02	640.53	2.48
900N	1200W	1674.29	651.76	644.88	642.79	2.09
960N	1200W	1667.32	653.20	646.06	644.30	1.76
1020N	1200W	1665.52	654.27	646.77	644.69	2.08
1080N	1200W	1668.59	654.12	646.19	644.03	2.17
1140N	1200W	1672.35	653.72	645.48	643.21	2.27
1200N	1200W	1673.50	653.68	645.24	642.97	2.28
1500S	960W	1574.94	673.83	666.18	664.12	2.07
1440S	960W	1580.86	672.68	664.89	662.35	2.04
1380S	960W	1582.03	672.38	664.61	662.60	2.00
1320S	960W	1578.50	673.01	665.46	663.36	2.10
1260S	960W	1582.51	672.24	664.95	662.50	2.45
1200S	960W	1599.03	668.85	661.55	658.97	2.58
1140S	960W	1617.04	664.93	657.63	655.12	2.51
1080S	960W	1633.53	661.68	654.41	651.58	2.84
1020S	960W	1650.42	658.15	650.93	647.94	2.99
960S	960W	1669.45	654.04	646.85	643.84	3.01
900S	960W	1687.71	649.96	642.77	639.89	2.88
840S	960W	1706.13	645.83	638.65	635.90	2.75
780S	960W	1720.55	642.59	635.35	632.77	2.58
720S	960W	1738.23	638.52	631.36	628.92	2.44
660S	960W	1752.63	635.16	628.16	625.78	2.38
600S	960W	1756.59	634.37	627.25	624.92	2.33
540S	960W	1751.64	635.55	628.17	626.00	2.17
480S	960W	1741.43	637.97	630.47	628.23	2.25
420S	960W	1729.71	640.73	633.27	630.78	2.49
360S	960W	1720.52	642.42	635.31	632.78	2.53
300S	960W	1707.82	645.52	638.33	635.53	2.80
240S	960W	1691.63	648.84	641.74	639.04	2.70
180S	960W	1676.47	651.98	645.12	642.32	2.80
120S	960W	1675.56	652.40	645.51	642.52	2.99
60S	960W	1674.84	652.52	645.77	642.68	3.10
60N	960W	1694.60	648.21	641.31	638.40	2.91
120N	960W	1702.42	647.24	640.26	636.71	3.55
180N	960W	1711.75	644.34	637.27	634.68	2.59
240N	960W	1728.60	640.98	633.68	631.02	2.66
300N	960W	1748.90	636.61	629.04	626.60	2.44
360N	960W	1772.08	631.51	623.89	621.53	2.36

420N	960W	1780.41	629.86	622.11	619.71	2.40
480N	960W	1793.91		539.53	616.75	
540N	960W	1801.93	624.15	617.00	614.99	2.01
600N	960W	1822.08	618.78	612.63	610.56	2.07
660N	960W	1844.47	612.57	607.86	605.62	2.24
720N	960W	1862.14	607.81	604.45	601.71	2.73
780N	960W	1854.14	610.40	605.44	603.48	1.95
840N	960W	1832.98	616.33	611.42	608.16	3.26
900N	960W	1810.33	622.35	616.54	613.14	3.39
960N	960W	1788.08	627.96	620.43	618.03	2.40
1020N	960W	1770.50	632.34	624.39	621.88	2.51
1080N	960W	1754.71	636.20	627.89	625.33	2.56
1140N	960W	1747.30	638.06	629.46	626.95	2.51
1200N	960W	1736.90	640.65	631.83	629.21	2.62
1500S	720W	1554.43	677.93	670.33	668.48	1.85
1440S	720W	1566.05	675.70	668.12	666.01	2.11
1380S	720W	1579.86	672.68	665.11	663.07	2.04
1320S	720W	1592.54	670.07	662.50	660.36	2.14
1260S	720W	1603.06	667.89	660.29	658.11	2.18
1200S	720W	1609.69	666.55	658.91	656.69	2.22
1140S	720W	1621.96	663.93	656.29	654.06	2.23
1080S	720W	1632.66	661.64	654.02	651.76	2.25
1020S	720W	1641.12	659.95	652.36	649.94	2.42
960S	720W	1650.30	657.95	650.45	647.97	2.48
900S	720W	1665.86	654.48	647.07	644.61	2.46
840S	720W	1683.13	650.57	643.33	640.83	2.45
780S	720W	1701.72	646.31	639.39	636.86	2.53
720S	720W	1707.69	645.20	638.21	635.56	2.65
660S	720W	1710.66	644.54	637.50	634.92	2.58
600S	720W	1706.75	645.39	638.18	635.77	2.41
540S	720W	1700.86	646.49	639.24	637.04	2.19
480S	720W	1687.64	649.65	642.33	639.91	2.42
420S	720W	1683.64	650.68	643.62	640.77	2.84
360S	720W	1678.82	651.21	644.64	641.81	2.82
300S	720W	1646.46	658.21	651.52	648.80	2.72
240S	720W	1622.12	663.25	656.71	654.03	2.68
180S	720W	1605.46	666.43	659.95	657.60	2.36
120S	720W	1593.83	668.49	662.31	660.08	2.23
60S	720W	1600.02	667.44	660.96	658.76	2.20
60N	720W	1632.98	660.64	654.03	651.69	2.34
120N	720W	1650.26	657.16	650.77	647.98	2.79
180N	720W	1672.15	652.75	646.40	643.26	3.14
240N	720W	1694.46	647.89	641.43	638.43	3.00
300N	720W	1717.66	643.05	636.45	633.40	3.05
360N	720W	1731.31	640.30	633.41	630.43	2.98
420N	720W	1747.33	636.78	629.76	626.94	2.82
480N	720W	1762.49		539.94	623.63	
540N	720W	1778.65	629.86	622.81	620.09	2.72
600N	720W	1787.66	628.02	620.83	618.12	2.71
660N	720W	1790.58	627.52	620.07	617.48	2.59
720N	720W	1790.78	627.60	619.92	617.44	2.49
780N	720W	1789.42	628.15	620.27	617.73	2.54
840N	720W	1789.50	628.22	620.17	617.72	2.45
900N	720W	1790.00	628.24	620.06	617.61	2.46
960N	720W	1788.31	628.67	620.37	617.98	2.39
1020N	720W	1781.79	630.42	621.92	619.41	2.51
1080N	720W	1773.19	632.50	623.77	621.29	2.48
1140N	720W	1764.07	634.71	625.74	623.28	2.45
1200N	720W	1756.11	636.53	627.37	625.02	2.35
1500S	480W	1550.43	678.90	671.35	669.33	2.01

1440S	480W	1562.32	676.44	668.86	666.81	2.06
1380S	480W	1571.34	674.64	667.00	664.88	2.12
1320S	480W	1581.43	672.52	664.82	662.73	2.09
1260S	480W	1591.49	670.36	662.63	660.58	2.04
1200S	480W	1599.64	668.75	661.00	658.84	2.16
1140S	480W	1607.40	666.96	659.21	657.18	2.03
1080S	480W	1616.61	664.97	657.21	655.21	2.00
1020S	480W	1624.27	663.25	655.52	653.57	1.96
960S	480W	1632.15	661.55	653.86	651.87	1.99
900S	480W	1637.91	660.24	652.60	650.64	1.96
840S	480W	1644.53	658.84	651.24	649.21	2.03
780S	480W	1650.82	657.26	649.69	647.86	1.84
720S	480W	1653.55	656.47	648.93	647.27	1.66
660S	480W	1650.80	657.27	649.75	647.86	1.89
600S	480W	1646.11	657.96	650.47	648.87	1.60
540S	480W	1645.43	658.27	650.74	649.02	1.73
480S	480W	1643.26	658.98	651.45	649.48	1.97
420S	480W	1642.23	659.23	651.85	649.71	2.15
360S	480W	1639.57	659.68	652.62	650.29	2.34
300S	480W	1620.79	663.40	656.33	654.31	2.02
240S	480W	1590.65	669.58	662.45	660.76	1.69
180S	480W	1571.60	673.19	666.10	664.83	1.27
120S	480W	1558.67	675.67	668.70	667.58	1.12
60S	480W	1550.22	677.11	670.59	669.38	1.21
60N	480W	1587.60	669.54	663.13	661.42	1.71
120N	480W	1609.47	665.07	658.99	656.74	2.25
180N	480W	1629.07	661.12	655.13	652.53	2.60
240N	480W	1645.87	657.66	651.55	648.92	2.63
300N	480W	1668.11	653.32	647.12	644.13	2.99
360N	480W	1684.38	650.17	643.76	640.61	3.15
420N	480W	1695.40	648.03	641.35	638.23	3.12
480N	480W	1703.56	646.43	639.54	636.46	3.08
540N	480W	1707.92	645.62	638.52	635.51	3.01
600N	480W	1711.74	644.84	637.60	634.68	2.92
660N	480W	1716.85	643.77	636.40	633.57	2.83
720N	480W	1719.89	643.26	635.73	632.91	2.81
780N	480W	1721.84	643.04	635.34	632.49	2.85
840N	480W	1726.03	642.23	634.34	631.58	2.76
900N	480W	1729.29	641.72	633.66	630.87	2.79
960N	480W	1728.33	641.99	633.74	631.08	2.67
1020N	480W	1731.04	641.43	632.98	630.49	2.49
1080N	480W	1732.13	641.37	632.73	630.25	2.48
1140N	480W	1734.95	640.74	631.92	629.64	2.29
1200N	480W	1740.20	639.77	630.82	628.49	2.33
1500S	240W	1557.33	677.57	669.84	667.87	1.98
1440S	240W	1564.61	676.10	668.35	666.32	2.03
1380S	240W	1574.38	673.95	666.17	664.24	1.94
1320S	240W	1576.96	673.62	665.77	663.69	2.08
1260S	240W	1582.25	672.36	664.48	662.56	1.92
1200S	240W	1586.46	671.43	663.55	661.66	1.89
1140S	240W	1590.71	670.41	662.53	660.75	1.78
1080S	240W	1593.53	669.81	661.94	660.15	1.79
1020S	240W	1595.44	669.36	661.51	659.74	1.77
960S	240W	1598.27	668.82	661.00	659.13	1.87
900S	240W	1601.62	667.96	660.17	658.42	1.75
840S	240W	1602.42	667.75	659.98	658.25	1.74
780S	240W	1602.89	667.51	659.79	658.15	1.64
720S	240W	1602.10	667.55	659.85	658.32	1.54
660S	240W	1600.49	667.88	660.20	658.66	1.54
600S	240W	1601.16	667.76	660.06	658.52	1.54

540S	240W	1604.21	667.09	659.35	657.86	1.48
480S	240W	1605.90	666.78	659.04	657.50	1.54
420S	240W	1604.97	666.98	659.27	657.70	1.57
360S	240W	1600.80	667.63	660.01	658.59	1.42
300S	240W	1591.63	669.42	662.07	660.55	1.51
240S	240W	1580.94	671.30	664.00	662.84	1.17
180S	240W	1568.98	674.01	666.73	665.39	1.34
120S	240W	1554.70	676.84	669.49	668.43	1.07
60S	240W	1533.44	680.96	673.63	672.94	0.66
60N	240W	1525.58	681.87	675.18	674.61	0.58
120N	240W	1546.37	677.69	671.18	670.20	0.98
180N	240W	1571.02	673.06	666.71	664.95	1.76
240N	240W	1596.33	667.99	661.72	659.55	2.17
300N	240W	1619.59	663.41	657.24	654.57	2.68
360N	240W	1631.13	661.35	655.00	652.09	2.91
420N	240W	1634.91	660.63	653.96	651.28	2.68
480N	240W	1638.22	660.10	653.27	650.57	2.71
540N	240W	1645.89	658.59	651.68	648.92	2.76
600N	240W	1654.71	656.99	649.98	647.72	2.96
660N	240W	1661.96	655.59	648.40	645.46	2.94
720N	240W	1667.76	654.42	647.01	644.20	2.80
780N	240W	1671.38	653.67	646.01	643.42	2.59
840N	240W	1673.27	653.47	645.62	643.01	2.61
900N	240W	1677.12	652.67	644.70	642.18	2.52
960N	240W	1681.77	651.67	643.62	641.18	2.44
1020N	240W	1685.78	650.87	642.73	640.31	2.42
1080N	240W	1695.15	648.88	640.70	638.28	2.41
1140N	240W	1700.96	647.62	639.38	637.02	2.36
1200N	240W	1700.56	647.68	639.32	637.11	2.21
1500S	00W	1545.21	679.95	672.14	670.44	1.70
1440S	00W	1552.24	678.46	670.66	668.95	1.71
1380S	00W	1555.98	677.58	669.79	668.15	1.64
1320S	00W	1557.62	677.25	669.46	667.80	1.65
1260S	00W	1561.18	676.28	668.54	667.05	1.49
1200S	00W	1558.53	676.97	669.19	667.61	1.58
1140S	00W	1558.76	676.90	669.14	667.55	1.57
1080S	00W	1561.28	676.28	668.55	667.03	1.52
1020S	00W	1564.44	675.60	667.93	666.35	1.58
960S	00W	1562.10	676.13	668.43	666.85	1.58
900S	00W	1564.35	675.46	667.81	666.37	1.44
840S	00W	1562.29	675.69	668.03	666.81	1.22
780S	00W	1560.94	675.84	668.19	667.10	1.09
720S	00W	1555.02	677.06	669.37	668.36	1.01
660S	00W	1551.96	677.72	670.00	669.01	0.99
600S	00W	1558.77	676.38	668.66	667.56	1.10
540S	00W	1558.18	676.40	668.65	667.69	0.97
480S	00W	1559.76	675.86	668.16	667.35	0.81
420S	00W	1557.79	676.14	668.48	667.77	0.71
360S	00W	1551.63	677.26	669.65	669.08	0.57
300S	00W	1540.59	679.48	671.89	671.42	0.47
240S	00W	1531.38	681.29	673.74	673.33	0.36
180S	00W	1522.56	683.25	675.70	675.25	0.45
120S	00W	1511.25	685.43	677.82	677.64	0.18
60S	00W	1498.67	687.79	680.23	680.30	-0.06
60N	00W	1497.05	687.82	680.46	680.64	-0.17
120N	00W	1523.38	682.87	675.48	675.07	0.41
180N	00W	1544.50	678.74	671.46	670.59	0.87
240N	00W	1552.60	677.17	670.00	668.87	1.13
300N	00W	1557.72	676.29	669.08	667.78	1.29
360N	00W	1560.72	675.66	668.49	667.15	1.34

420N	00W	1556.11	676.61	669.71	668.13	1.59
480N	00W	1558.23	676.07	669.45	667.67	1.78
540N	00W	1567.94	674.04	667.42	665.61	1.81
600N	00W	1583.28	671.14	664.23	662.34	1.89
660N	00W	1607.00	666.66	659.28	657.27	2.02
720N	00W	1619.48	664.45	656.76	654.59	2.17
780N	00W	1622.63	663.88	655.96	653.92	2.04
840N	00W	1625.14	663.48	655.47	653.38	2.09
900N	00W	1626.97	663.14	655.15	652.98	2.17
960N	00W	1637.69	661.03	652.90	650.68	2.22
1020N	00W	1645.22	659.44	651.22	649.06	2.16
1080N	00W	1649.66	658.70	650.41	648.11	2.31
1140N	00W	1651.94	658.22	649.93	647.61	2.31
1200N	00W	1654.37	657.59	649.31	647.09	2.22
480S	240E	1530.54	681.96	674.22	673.56	0.67
420S	240E	1522.69	683.50	675.78	675.22	0.56
360S	240E	1515.17	684.94	677.27	676.81	0.46
300S	240E	1504.64	687.09	679.48	679.03	0.44
240S	240E	1498.34	688.44	680.80	680.37	0.42
180S	240E	1493.94	689.01	681.31	681.29	0.01
120S	240E	1479.03	691.96	684.32	684.44	-0.11
60S	240E	1471.09	693.42	685.88	686.10	-0.23
60N	240E	1476.30	692.32	684.91	685.01	-0.10
120N	240E	1489.44	689.70	682.28	682.24	0.04
180N	240E	1504.46	686.80	679.38	679.07	0.31
240N	240E	1521.30	683.43	676.01	675.51	0.50
300N	240E	1541.91	679.46	672.01	671.14	0.87
360N	240E	1559.09	676.11	668.63	667.49	1.13
420N	240E	1578.63	672.38	664.89	663.33	1.56
480N	240E	1593.36	669.63	662.05	660.18	1.87
540N	240E	1600.12	668.60	660.92	658.74	2.18
600N	240E	1605.34	667.52	659.52	657.52	1.90
660N	240E	1607.85	667.26	658.94	657.09	1.85
720N	240E	1611.46	666.41	657.94	656.31	1.63
780N	240E	1617.14	665.23	656.67	655.09	1.58
840N	240E	1620.91	664.49	655.89	654.28	1.61
900N	240E	1625.20	663.54	654.92	653.37	1.55
960N	240E	1627.82	662.85	654.21	652.80	1.41
1020N	240E	1621.16	664.28	655.66	654.23	1.43
1080N	240E	1617.90	664.81	656.23	654.93	1.30
1140N	240E	1617.79	664.89	656.40	654.95	1.45
1200N	240E	1613.04	665.80	657.44	655.97	1.47
480S	480E	1494.25	689.11	681.50	681.23	0.27
420S	480E	1487.95	690.24	682.61	682.56	0.05
360S	480E	1482.42	691.25	683.59	683.72	-0.13
300S	480E	1472.58	693.24	685.56	685.79	-0.23
240S	480E	1466.77	694.22	686.49	687.01	-0.52
180S	480E	1458.92	695.82	688.06	688.66	-0.61
120S	480E	1458.54	695.96	688.17	688.74	-0.58
60S	480E	1449.38	697.48	689.95	690.66	-0.72
60N	480E	1482.25	690.82	683.79	683.76	0.03
120N	480E	1506.37	686.00	679.13	678.67	0.46
180N	480E	1526.72	682.19	675.32	674.36	0.96
240N	480E	1545.63	678.69	671.72	670.35	1.36
300N	480E	1560.48	676.06	668.67	667.20	1.47
360N	480E	1570.39	674.25	666.58	665.09	1.49
420N	480E	1577.68	672.97	665.01	663.53	1.48
480N	480E	1583.54	672.06	663.92	662.28	1.63
540N	480E	1588.61	671.04	662.78	661.20	1.58
600N	480E	1593.39	669.97	661.60	660.18	1.42

660N	480E	1596.70	669.35	660.90	659.47	1.43
720N	480E	1598.19	669.02	660.50	659.15	1.35
780N	480E	1596.87	669.54	660.97	659.43	1.54
840N	480E	1598.67	668.99	660.44	659.05	1.39
900N	480E	1597.36	669.25	660.72	659.33	1.39
960N	480E	1597.84	669.00	660.57	659.23	1.34
1020N	480E	1598.72	668.59	660.30	659.04	1.26
1080N	480E	1596.42	669.03	660.89	659.53	1.36
1140N	480E	1590.77	670.03	662.06	660.74	1.33
1200N	480E	1585.80	670.84	663.19	661.80	1.40
480S	720E	1452.30	696.98	689.41	690.05	-0.64
420S	720E	1448.38	697.69	690.11	690.87	-0.76
360S	720E	1440.93	699.09	691.55	692.43	-0.88
300S	720E	1428.16	701.34	694.08	695.11	-1.02
240S	720E	1421.90	702.47	695.50	696.42	-0.92
180S	720E	1428.87	701.12	694.06	694.96	-0.89
120S	720E	1444.46	698.22	691.23	691.70	-0.47
60S	720E	1466.55	693.94	686.83	687.06	-0.23
60N	720E	1493.70	688.42	681.27	681.34	-0.07
120N	720E	1511.68	685.00	677.83	677.55	0.28
180N	720E	1528.81	681.81	674.56	673.92	0.63
240N	720E	1545.13	678.92	671.49	670.46	1.03
300N	720E	1554.13	677.44	669.73	668.55	1.19
360N	720E	1561.55	676.15	668.18	666.97	1.21
420N	720E	1567.55	675.08	666.93	665.69	1.24
480N	720E	1572.13	674.25	665.96	664.72	1.25
540N	720E	1575.52	673.61	665.24	663.99	1.24
600N	720E	1577.88	673.09	664.66	663.49	1.17
660N	720E	1578.76	672.97	664.52	663.30	1.22
720N	720E	1577.26	673.22	664.75	663.62	1.13
780N	720E	1575.64	673.39	664.95	662.97	0.98
840N	720E	1573.18	673.88	665.49	664.49	1.00
900N	720E	1572.96	673.78	665.51	664.54	0.97
960N	720E	1569.78	674.41	666.31	665.22	1.09
1020N	720E	1565.42	675.06	667.15	666.15	1.01
1080N	720E	1559.14	676.12	668.44	667.48	0.96
1140N	720E	1550.22	677.79	670.32	669.38	0.94
1200N	720E	1539.12	679.83	672.59	671.74	0.86
480S	960E	1405.11	705.58	698.05	699.92	-1.86
420S	960E	1403.80	705.83	698.45	700.19	-1.74
360S	960E	1402.23	705.83	698.91	700.52	-1.61
300S	960E	1407.94	704.52	698.05	699.33	-1.28
240S	960E	1427.74	700.66	694.22	695.19	-0.97
180S	960E	1454.82	695.66	689.22	689.52	-0.30
120S	960E	1479.92	690.96	684.45	684.25	0.20
60S	960E	1498.32	687.44	680.64	680.37	0.27
60N	960E	1524.87	682.48	675.21	674.76	0.45
120N	960E	1535.55	680.60	673.23	672.49	0.74
180N	960E	1544.07	679.05	671.55	670.68	0.86
240N	960E	1553.34	677.40	669.83	668.72	1.12
300N	960E	1561.63	675.78	668.17	666.95	1.22
360N	960E	1568.48	674.39	666.74	665.49	1.25
420N	960E	1569.59	674.22	666.38	665.26	1.13
480N	960E	1569.26	674.30	666.33	665.33	1.00
540N	960E	1566.93	674.82	666.73	665.82	0.90
600N	960E	1561.19	676.12	667.89	667.05	0.85
660N	960E	1558.73	676.72	668.46	667.57	0.89
720N	960E	1557.97	676.87	668.64	667.73	0.91
780N	960E	1555.71	677.26	669.09	668.21	0.88
840N	960E	1553.68	677.40	669.38	668.64	0.74

900N	960F	1548.40	678.48	670.64	669.76	0.87
960N	960F	1538.88	680.25	672.58	671.79	0.79
1020N	960F	1529.95	681.78	674.37	673.68	0.69
1080N	960E	1517.95	683.78	676.67	676.22	0.45
1140N	960F	1498.45	687.26	680.37	680.34	0.03
1200N	960F	1477.50	691.05	684.38	684.73	-0.37
480S	1200E	1387.98	708.66	701.45	703.48	-2.04
420S	1200E	1388.30	708.41	701.59	703.42	-1.82
360S	1200E	1410.95	703.71	697.02	698.70	-1.68
300S	1200E	1440.21	698.33	691.88	692.59	-0.71
240S	1200E	1460.90	694.40	688.00	688.25	-0.24
180S	1200E	1477.18	691.25	684.77	684.82	-0.06
120S	1200E	1491.01	688.77	682.05	681.91	0.14
60S	1200E	1502.42	686.70	679.79	679.50	0.28
60N	1200E	1515.57	684.53	677.09	676.72	0.37
120N	1200E	1522.01	683.31	675.74	675.35	0.38
180N	1200E	1526.03	682.48	674.78	674.51	0.26
240N	1200E	1527.83	682.45	674.64	674.13	0.51
300N	1200E	1529.61	682.19	674.31	673.75	0.56
360N	1200E	1529.79	682.09	674.15	673.71	0.43
420N	1200E	1531.69	681.71	673.74	673.31	0.43
480N	1200E	1532.83	681.42	673.42	673.07	0.35
540N	1200E	1534.02	681.24	673.23	672.82	0.41
600N	1200E	1534.80	681.14	673.13	672.65	0.48
660N	1200E	1534.74	681.03	673.03	672.66	0.37
720N	1200E	1534.31	681.09	673.14	672.76	0.38
780N	1200E	1532.05	681.41	673.54	673.24	0.30
840N	1200E	1527.15	682.32	674.53	674.27	0.26
900N	1200E	1518.10	684.04	676.31	676.19	0.12
960N	1200E	1509.63	685.63	677.98	677.98	0.0
1020N	1200E	1496.61	688.18	680.53	680.73	-0.20
1080N	1200E	1486.34	690.16	682.57	682.90	-0.33
1140N	1200E	1473.76	692.47	684.95	685.54	-0.59
1170N	1200E	1466.37	693.85	686.45	687.10	-0.65

EXECUTION TERMINATED 17:18:36 T=.593 RC=0 \$1.51

\$SIGNOFF



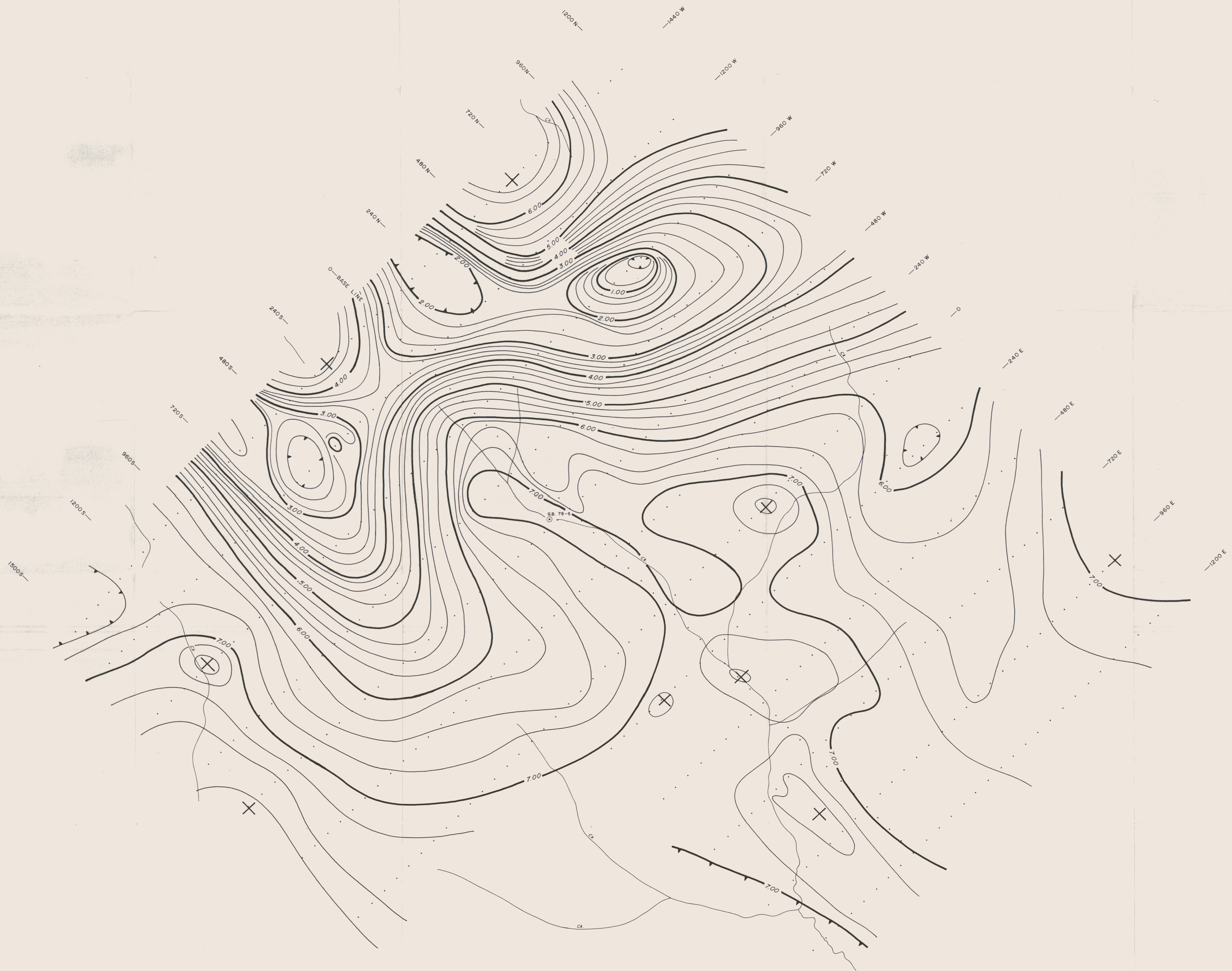
N.T.S. 105 K/12
AMAX MINERALS EXPLORATION
 - FISHOOK CREEK AREA -
 WHITEHORSE MINING DISTRICT, YUKON TERRITORY

ELEVATION MAP
 CONTOUR INTERVAL 20 METRES

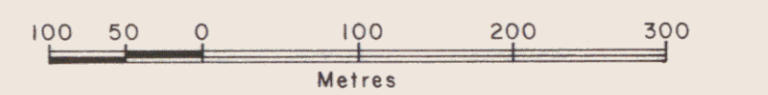
TO ACCOMPANY REPORT TITLED:
 GRAVITY SURVEY
 LU CLAIMS AREA
 BY: C.A. AGER P.D., P.E.N.G.
 DATED: SEPT. 1978 PROJECT: LU

CA
 C.A. AGER & ASSOC.
 SURREY, B.C. CANADA

OWN. BY: T.M.	FIG. NO.
CHEK. BY:	3
DATE: SEPT. 1978	



Terrain Radius 600 Metres
 $\rho = 2.60 \text{ g/cc (E.F. = 0.19128 Mgpl/M)}$

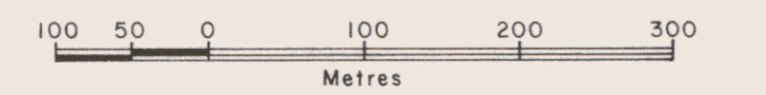


N.T.S. 105 K/12
AMAX MINERALS EXPLORATION
 —FISHOOK CREEK AREA—
 WHITEHORSE MINING DISTRICT, YUKON TERRITORY

COMPLETE BOUGUER
GRAVITY MAP
 CONTOUR INTERVAL : 0.25 MGAL

TO ACCOMPANY REPORT TITLED: GRAVITY SURVEY LU CLAIMS AREA BY C.A. AGER PhD, PEng DATED SEPT. 1978 PROJECT LU	OWN. BY: T.M. CHK. BY: DATE: SEPT. 1978	FIG. NO. 4
--	---	----------------------

C.A. AGER



N.T.S. 105 K/12
AMAX MINERALS EXPLORATION
 —FISHOOK CREEK AREA—
 WHITEHORSE MINING DISTRICT, YUKON TERRITORY

NON-LINEAR
BOUGUER GRAVITY MAP
 CONTOUR INTERVAL 0.25 MGAL

TO ACCOMPANY REPORT TITLED:
 GRAVITY SURVEY
 LU CLAIMS AREA
 BY C.A. AGER P.D., P.E.G.
 DATED: SEPT. 1978 PROJECT LU

Adger

C.A. AGER & ASSOC. SURREY, B.C. CANADA	DWN. BY: T.M. CHK. BY: DATE: SEPT. 1978	FIG. NO. 5
---	---	---------------



N.T.S. 105 K/12
AMAX MINERALS EXPLORATION
 —FISHOOK CREEK AREA—
 WHITEHORSE MINING DISTRICT, YUKON TERRITORY

TERRAIN EFFECT MAP
 CONTOUR INTERVAL · 0.25 MGAL

TO ACCOMPANY REPORT TITLED:
 GRAVITY SURVEY
 LU CLAIMS AREA
 BY C.A. AGER PH.D., P.E.G.
 DATED: SEPT. 1978 PROJECT LU

Agar

C.A. AGER & ASSOC. SURREY, B.C. CANADA	DWN. BY: T.M. CHK. BY: DATE: SEPT. 1978	FIG. NO. 6
---	---	---------------