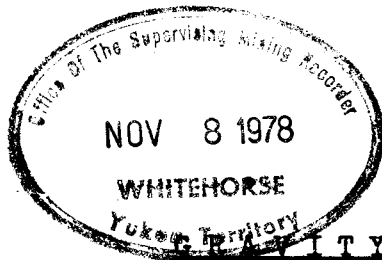


C. A. AGER & ASSOCIATES LTD.

Telephone (604) 536-1154

CONSULTING
GEOPHYSICISTS

15423 34th Ave.
Surrey, B.C. Canada
V3S 4N7



GRAVITY SURVEY
TAY #1 & TAY #2
CLAIMS AREAS



SUMMARY

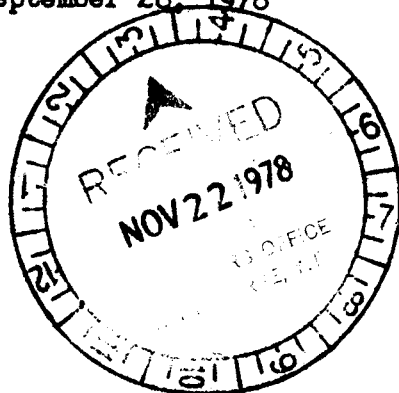
This report contains the results of the gravity survey work completed over the Tay #1 and Tay #2 Claims Grid areas, Fishhook Creek area, Yukon Territory. The gravity results indicate three anomalous areas on the Tay #1 grid and three anomalous zones on the Tay #2 grid. Some of the anomalies are correlated to high terrain effect areas and are therefore suspect. Each of the anomalies should be compared to the EM and geological data. Coincident and down dip gravity highs and EM conductors should be drilled to their centers of mass provided the geological environment is favourable.

Respectfully submitted,

Charles A. Ager, PhD, PEng

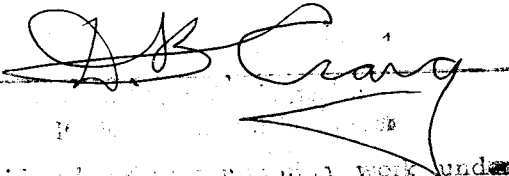
Geophysicist

090393
September 28, 1978

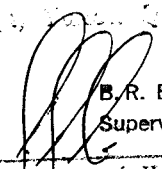


This report has been examined by the Geological Evaluation Unit and is recommended to the Commissioner to be considered as representing a value amount of

\$ 22,385.45



Considered and approved as work under Section 52 (1), Yukon Quartz Mining Act.


B. R. BAXTER
Supervising Mining Recorder

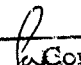

Commissioner of Yukon Territory

TABLE OF CONTENTS

Introduction	page 1
Geological Setting	2
Instrumentation & Survey Procedure	5
Data Reduction	6
Interpretation of Results	8
Recommendations & Conclusions	13
Certificate of Qualifications	14
Cost Statement	15
Appendix	
A. Tay #1 & Tay #2 Grids Gravity Data	16
B. Tay #1 & Tay #2 Grids Non-Linear Gravity Data	25

LIST OF FIGURES

Figure 1	Location Map - General Area	page 3
Figure 2	Location Map - Tay #1, Tay #2 Claims	4
Figure 3a	Elevation Map - Tay #1 Claims Grid	Appendix Leaflet
3b	Elevation Map - Tay #2 Claims Grid	" "
Figure 4a	Complete Bouguer Gravity Map - Tay #1	" "
4b	Complete Bouguer Gravity Map - Tay #2	" "
Figure 5a	Non-Linear B. Gravity Map - Tay #1	" "
5b	Non-Linear B. Gravity Map - Tay #2	" "
Figure 6a	Terrain Effect Map - Tay #1	" "
6b	Terrain Effect Map - Tay #2	" "

LOCATION, DATE OF WORK, CREW

Location: Tay #1, Tay #2 Claims Grid Areas

Whitehorse Mining District

Fishhook Creek Area, Yukon Territory

NTS 105K/5,12

Tay #1: $62^{\circ}30'$ N Lat by $133^{\circ}55'$ W Long

Tay #2: $62^{\circ}32'$ N Lat by $133^{\circ}58'$ W Long

Date of Work:

Field Work: August 10-25, 1978

Office Work: Sept 1-28, 1978

Crew:

D.R. MacQuarrie, BSc, party chief

J.G.Ager, BSc, geophysical operator

H. Penner, gravity observer

M. Faucher, gravity observer

K. Dieckman, field assistant

J. Legare, field assistant

C.A.Ager, PhD, PEng, data interpreter

INTRODUCTION

At the request of Mr Larry LeBel, Amax Minerals Exploration, an exploratory gravity survey was conducted over the Tay #1 and Tay #2 Claims area grids, Fishhook Creek area, Yukon Territory. The intent of the gravity work was to delineate areas of excess mass within the underlying rock units which could indicate the presence of massive Pb-Zn mineralization.

The claims grids are located some 43 kilometers northwest of the townsite of Faro, Y.T. (Figures 1 and 2). The geographic co-ordinates of the centers of the grids are as follows:

Tay # 1: 62°30' N Lat by 133°55' W Long

Tay # 2: 62°32' N Lat by 133°58' W Long

The Tay #1 grid is located on the southwestern slopes of a large hill at elevation ranging between 1100-1500 meters.

The Tay #2 grid is situated 4 kilometers to the northwest of Tay #1 on the western slopes of the Anvil Range mountains at elevation between 1000-1250 meters. Access to both grids is by helicopter from Faro or Ross River, Y.T.

A description of the geological setting of the two grids is given in the following section by Mr Tony Hitchens of Amax Minerals Exploration. Details of the gravity work and its interpretation follow the geological information.

GEOLOGICAL SETTING

The Lower Cambrian two mica-quartz schists and calc-silicates with overlying Ordovician calcareous chlorite phyllites strike north-westerly and dip gently to the northeast on the Tay property.

The calc-silicate exposed in the north-south trending creek valley is stratigraphically the lowest unit exposed on the property although regional work indicates that the calc-silicate is a horizon of variable thickness enclosed by the two mica-quartz schist. West of the creek the contact between the calc-silicate and overlying mica-schists is gradational but east of the creek the calc-silicate may be in sharp contact with overlying graphitic schists. Minor rock types within the calc-silicate include coarse grained garnet-diopside skarns, spatially associated with the Cretaceous quartz monzonite, and narrow graphitic bands of no economic significance.

The mica schists overlying the calc-silicate consist of a rusty purplish brown quartz-biotite-sericite±andalusite schist, and its facies equivalent a quartz-sericite and/or sericite-quartz schist to phyllite. Generally the biotitic schist predominates at the base of the section whereas the sericitic phyllite caps the section. Scattered through the mica schist sequence are cherty and/or sericitic graphitic horizons that vary in strike length from 800 m to several thousand metres. Since these conductive graphitic horizons are believed to be equivalent to the ore bearing units at Faro the gravity surveys were designed to cover as many of these conductors as possible. Local bands of grey crystalline marble are exposed near these graphitic horizons but are at least 400 m above the main calc-silicate unit.

The youngest meta-sedimentary rock on the property is a chloritic phyllite to metabasite unit exposed on a ridge on the eastern portion of the claim block. At least three narrow cherty and/or calcareous slightly graphitic bands were noted in the chlorite phyllite and represent interruptions in the volcanic activity.

Small Cretaceous quartz monzonite intrusions on the property are apophyses of stocks west and north of the property.

The depositional environment of the mica schists is probably best interpreted as a thick clastic turbidite sequence interrupted by an influx of carbonate debris. Periods of low clastic deposition are represented by the graphitic horizons. Chloritic phyllites are a mixture of both volcanoclastic sediments and basic pyroclastic deposits. A volcanic component to the clastic sequence becomes noticeable towards the top of the quartz-sericite phyllite and narrow amphibolitic bands within the calc-silicate may represent brief basic volcanic events.

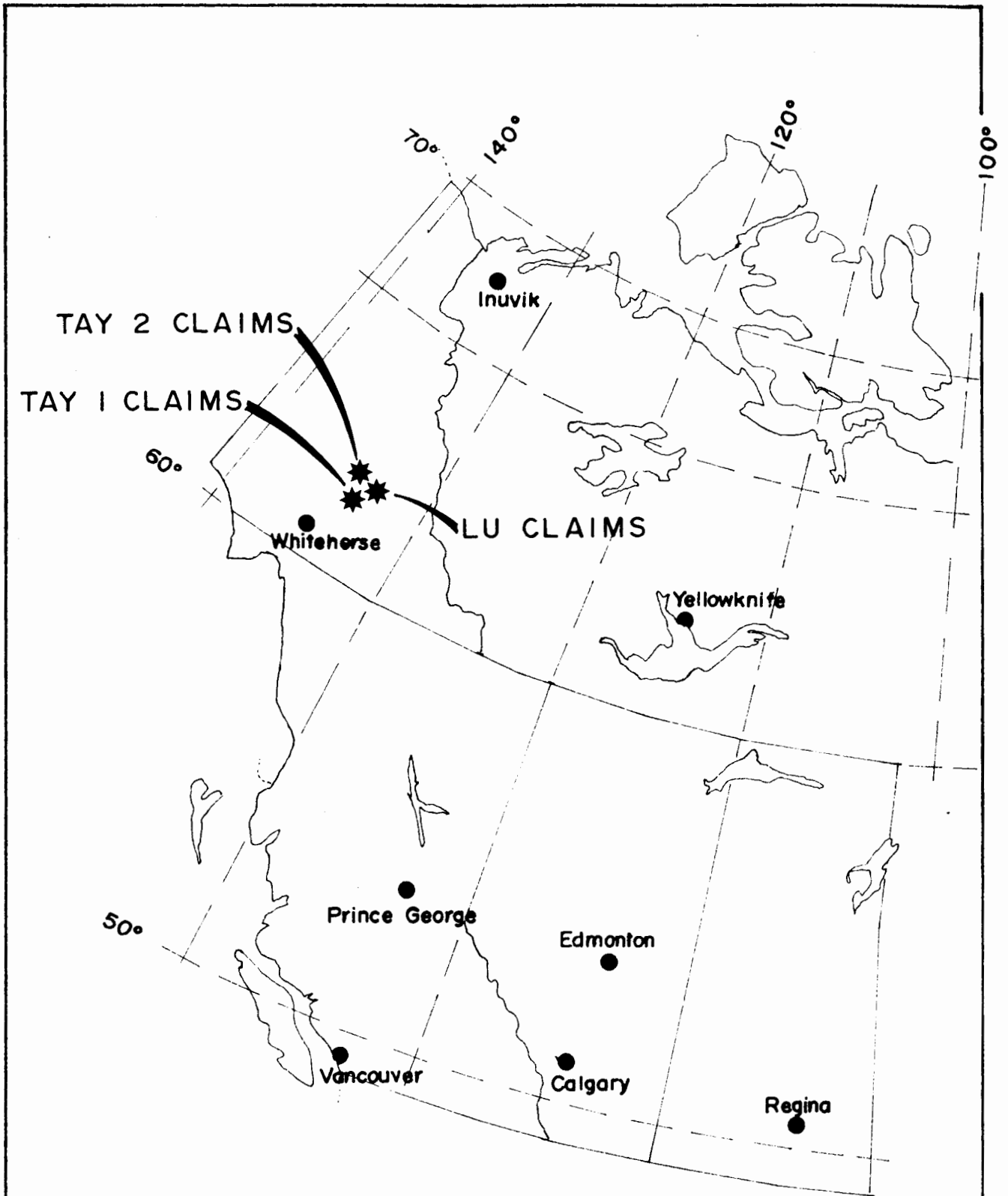


FIG. 1

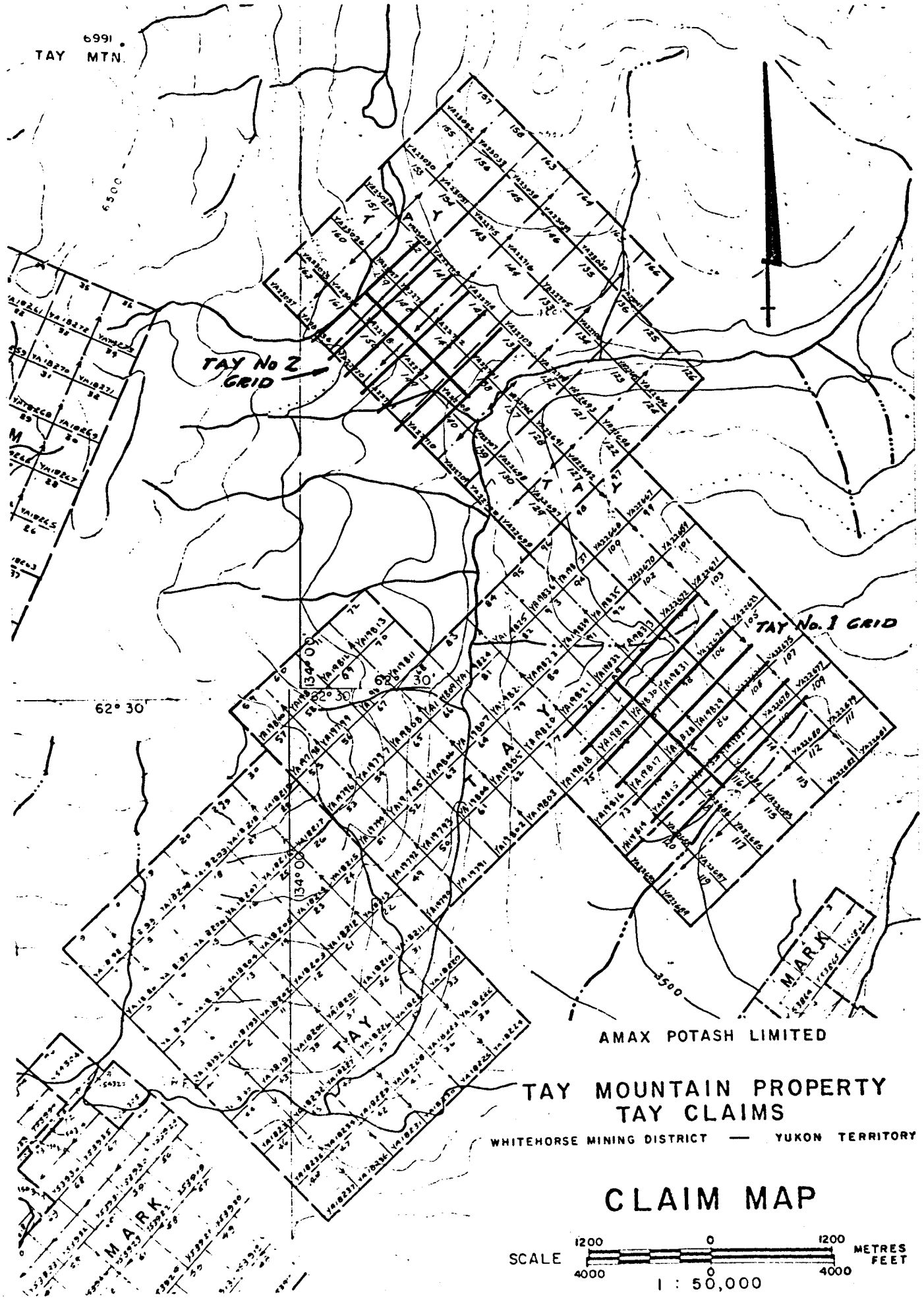
LOCATION MAP

GENERAL AREA

DATE SEPT. 1978

C-A-AGER & ASSOC.
Surrey B.C. Canada

6991
TAY MTN.

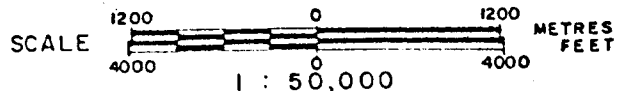


AMAX POTASH LIMITED

TAY MOUNTAIN PROPERTY TAY CLAIMS

WHITEHORSE MINING DISTRICT — YUKON TERRITORY

CLAIM MAP



Vancouver —
N T S Ref 105 K 5, 12, L 8, 9
FIG. 2

INSTRUMENTATION & SURVEY PROCEDURE

Gravity observations were made using two LaCoste & Romberg Model G gravity meters (serial numbers G52 and G199) with reading accuracy of ± 0.01 mgal. All gravity readings were within the dial ranges 5080-5260 and 4940-5020 for which the dial constants were 1.04525-1.04520 and 1.05932 respectively. Instrument and diurnal drift were accounted for by tying into known base stations within three hour intervals.

Gravity stations were located at 60 meter intervals along pre-cut and picketed lines spaced 240 meters apart as shown on Figures 3a and 3b. Elevations were measured to the top of pickets at ground level using an electronic level developed by Ager & Associates Ltd. Relative elevations are considered accurate to ± 0.03 meters between stations. The elevation references for each survey grid were picked from 1:5000 orthophoto base maps of the area supplied by Amax as follows:

Tay #1 Grid: GB78-7 1443.88 meters

Tay #2 Grid: BLO+720W 1162.74 meters

The elevations so determined for each survey grid are relative to each base value and are plotted on Figures 3a and 3b.

The gravity survey for each grid is referenced to a permanent base station established within the survey area. For Tay #1 grid, GB78-7 is located on a flat rock 30 meters northwest of I240E+780N and is marked by an orange painted post 1.3 meters high. It is 30 meters east of the campsite. For Tay #2 grid,

GB78-7 is located 80 meters east of camp on top of a rounded granitic boulder painted fluorescent orange. It is also marked by an orange post 5cm by 10cm by 1.3 meters high situated 1 meter south of the base station. The absolute values of gravity for each base station were determined by gravity ties to the National Network station at Whitehorse, Y.T. As well, each base station was tied together. A complete listing of the data is given in Appendix A.

DATA REDUCTION

As is well known, the observed gravity values (g_0) contain much information of non-interest in mining geophysics. Simply stated, the problem is to separate the effects of the earth (g_E) from the observed gravity field. The map of interest, the Complete Bouguer Gravity Map (Δg_{CB}) is defined as follows:

$$\Delta g_{CB} = g_0 - g_E \quad (1)$$

where

$$g_E = g_L + g_{FA} + g_{BS} + g_T \quad (2)$$

\uparrow Latitude effect \uparrow Free Air effect \uparrow Bouguer Slab effect \uparrow Terrain effect

Using standard procedures, the Complete Bouguer Gravity Map (Figures 4a and 4b) was calculated from equations 1 and 2 above. Terrain effects were calculated to a radius of 600 meters about each station using computer techniques of Ager and Associates and are shown for reference on Figures 6a and 6b. Bouguer slab and terrain density was taken to be 2.80 g/cc which corresponds to an elevation factor of 0.19128 mgal/meter. The complete Bouguer gravity values are on an arbitrary datum but all three grids (Lu, Tay#1 and Tay #2) have the same datum and can be compared directly (Figures 4a and 4b).

Generally in mountainous areas, if a linear elevation factor is used in gravity reduction, then, even after terrain corrections, there can remain correlations of the Bouguer gravity map with surface topography. This can clearly be seen in each of the Bouguer gravity maps (Figures 4a and 4b) as will be discussed later in the report. The problem then is to generate a gravity map with minimum correlation to topography. This can be done by using a non-linear elevation factor equation that is derived from the data itself. It is found by fitting a second order polynomial in elevation (h) to the adjusted gravity values ($g_A = g_0 + g_L + g_T$). The equation for the elevation effect for each of the grids is given below. The Non-Linear Bouguer Gravity Map is simply the adjusted gravity minus the elevation effect gravity.

Tay #1 Grid:

$$g_{EE} = 936.71 - 0.1270415h - 0.0000283475h^2 \quad (3a)$$

Tay #2 Grid:

$$g_{EE} = 908.65 - 0.085513h - 0.000042523h^2 \quad (3b)$$

where

h = station elevation in meters

g_{EE} = elevation effect in mgals

and
$$g_{NL} = g_A - g_{EE} \quad (4)$$

The non-linear gravity maps, Figures 5a and 5b, are found from Equations 3 and 4 above. These maps are, in fact, a form of residual gravity for the survey area. A listing of the values is given in Appendix B.

INTERPRETATION OF RESULTS

The purpose of the gravity survey work was to outline areas of gravity high anomalies which could signal the presence of massive Pb-Zn mineralization. Correlation of gravity highs with EM conductors within favourable geological units would represent a good drill target.

Inspection of the C.B. Gravity Maps for the Tay #1 and Tay #2

Grid areas indicates a very strong correlation of C.B. gravity with elevation. This indicates that the elevation factor used is too small for the Tay #1 grid and too large for the Tay #2 grid as evidenced in the following table:

Elevation	Tay #1 N.L. Elev Factor	Tay #2 N.L. Elev Factor
1000 meters		0.170559 mgal/m
1100 meters		0.179064 mgal/m
1200 meters	0.197476 mgal/m	0.187569 mgal/m
1400 meters	0.209215 mgal/m	
1600 meters	0.220948 mgal/m	

Clearly, the 0.19128 mgal/m linear elevation factor determined from rock density 2.80 g/cc and the theoretical free air gradient is useful only in the vicinity of 1200 meter elevation. At other higher and lower elevations, it appears more appropriate to use the non-linear factor. For the above reasons, the non-linear gravity maps are considered the better maps from the gravity point of view for interpretation. The two grids are interpreted separately in the following paragraphs.

Tay #1 Grid

- (1) Inspection of Figure 5a indicates that the general fabric of the geology strikes northwest-southeast.

This same fabric is also evident on the C.B. gravity map, Figure 4a, except it also indicates a gravity gradient of about +0.25 mgal/100 meters which correlates to topography as discussed before.

- (2) Three gravity high anomalies are outlined within the grid area. The main anomaly is centered at B10+360E and extends toward the northwest through about 120S on all the lines to the northwest. The troublesome feature of this anomaly is that it correlates rather well with a similar terrain effect gravity high in this region (Figure 6a).
- (3) The second gravity high anomaly is centered at L0+720N and extends northwest to L240W and southeast to L240E. It has maximum local residual amplitude of about +0.75 mgal.
- (4) A third gravity high is indicated at L720W+1140N. It occurs on the northwestern corner of the survey grid and is open to the northwest. It has residual amplitude of about 0.50 mgals.
- (5) Each of the gravity high anomalies, when looked at in overview, form part of a larger arcuate feature. This pattern should be compared to the EM data and geological information in order to judge each one's economic significance. The shaded areas on Figure 5b indicate the area within which the source is expected to lie.

Tay #2 Grid

- (1) Inspection of the non-linear gravity map, Figure 5b, indicates a general northwest-southeast fabric to the geology in this region. However, in the zone southeast of I480E, the grain of the geology appears to rotate sharply to a northeast-southwest direction. This indicates a more dense rock unit to the southeast of I480E with contact probably along the creek area.
- (2) Three anomalies of possible economic significance are indicated on the Tay #2 grid. The first anomaly is elongated along the base line with center at BLO+120E. It has residual amplitude of +0.75 mgals and extends between BLO+60W and BLO+400E as shown by the shaded area on Figure 5b.
- (3) A second gravity high is situated north of the base line at co-ordinates I240E+540N. It has residual amplitude in excess of 1.0 mgal and extends between lines 240W and 480E from about 420N to 720N. In fact, the feature is open to the north.
- (4) The third anomalous area is located in the region southeast of the creek (I480E). It is a feature elongated along L720W and is open to the south and east. It has residual amplitude in excess of 1.0 mgal with centers at L720E+240S and BLO+660E. There is some correlation

of this anomaly with the terrain effect map, Figure 6b. On first glance, this anomaly appears to be caused by a heavier rock unit which crosscuts the general fabric of the geology with contact in the vicinity east of the creek as discussed in (1) above.

- (5) The shaded areas on Figure 5b indicate the area within which the source for the gravity highs is most certainly to be found. As before, these features should be compared to geology and EM before comments about their economic importance can be made.

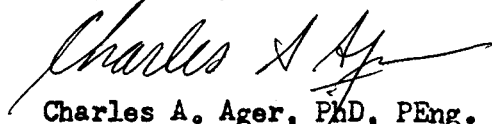
Maximum depth estimates to centers of mass are given for each of the Tay #1 and Tay #2 gravity high features discussed above. For anomalous zones which are open (incomplete) the depths are usable only as a rough guide.

Co-ordinates of Center of Anomaly	Maximum Depth to Center of Mass
Tay #1 BL0+360E	140 meters
L0+720N	130 meters
L720W+1140N	150 (?) meters
Tay #2 BL0+120E	45 meters
L240E+540N	180 meters
L720E+240S BL0+660E)	150 (?) meters

RECOMMENDATIONS & CONCLUSIONS

Six gravity high anomalies are outlined on the Tay #1 and Tay #2 claims grid areas. Each anomaly should be compared to the EM and geological data. Coincident and down-dip correlated EM conductors and gravity high anomalies within favourable geological units should be drilled to depths of their center of mass or deeper. Drill hole locations should be specified only after an appraisal of its economic potential is made.

Respectfully submitted,


Charles A. Ager, PhD, PEng.

September 28, 1978

Geophysicist

APPENDIX A TAY #1 AND TAY #2 GRIDS GRAVITY DATAGB 78-7: Observed Gravity = 981,702.45 mgal (absolute) = 702.45 (relative)GB 78-8: Observed Gravity = 981,762.28 mgal (absolute) = 762.28 (relative)

Bouguer Density = 2.80 g/cc Elevation Factor = 0.19128 mgal/meter

TAY #1	STATION COORD.	ELEVATION	OBS.GRAV	C.B.GRAV	TERRAIN	LATITUDE
	(meters)	(meters)	(mgal)	(mgal)	(mgal)	(mgal)
GB	78-7	1443.88	702.45	971.56	1.00	-8.08
BL 0 N	720W	1228.61	746.90	974.71	0.93	-8.14
BL 0 N	660W	1233.88	745.58	974.65	1.17	-8.12
BL 0 N	600W	1261.41	739.30	974.30	1.30	-8.08
BL 0 N	540W	1271.91	737.92	974.44	1.27	-8.05
BL 0 N	480W	1280.78	736.29	974.51	1.25	-8.03
BL 0 N	420W	1291.16	734.13	974.45	1.34	-8.00
BL 0 N	360W	1299.27	732.41	974.34	1.38	-7.97
BL 0 N	300W	1309.61	730.12	974.11	1.43	-7.95
BL 0 N	240W	1321.15	727.63	973.90	1.48	-7.92
BL 0 N	180W	1331.73	725.33	973.66	1.49	-7.90
BL 0 N	120W	1342.83	722.98	973.44	1.46	-7.86
BL 0 N	60W	1350.67	721.34	973.29	1.42	-7.83
BL 0 N	00W	1362.60	718.81	973.12	1.47	-7.81
BL 0 N	60E	1369.21	717.36	972.95	1.45	-7.77
BL 0 N	120E	1373.47	716.42	972.89	1.50	-7.75
BL 0 N	180E	1376.81	715.62	973.04	1.79	-7.73
BL 0 N	240E	1376.87	715.48	973.46	2.31	-7.70
BL 0 N	300E	1364.95	717.87	973.84	2.53	-7.66
BL 0 N	360E	1344.08	722.16	974.15	2.53	-7.64
BL 0 N	420E	1318.48	727.29	974.35	2.47	-7.61
BL 0 N	480E	1294.28	732.17	974.44	2.27	-7.58
BL 0 N	540E	1268.75	737.18	974.41	2.08	-7.55
BL 0 N	600E	1242.19	742.20	974.36	2.10	-7.53
BL 0 N	660E	1235.39	743.92	974.17	1.44	-7.49
BL 0 N	720E	1244.04	742.39	974.33	1.44	-7.46
720S	720W	1130.74	765.60	975.48	1.42	-7.83
660S	720W	1143.56	763.12	975.34	1.33	-7.85
600S	720W	1152.50	761.47	975.26	1.25	-7.87
540S	720W	1161.12	759.59	974.99	1.19	-7.90
480S	720W	1171.01	757.74	974.95	1.15	-7.93
420S	720W	1184.46	755.26	974.97	1.09	-7.95
360S	720W	1193.57	753.58	974.96	1.04	-7.97
300S	720W	1193.72	753.01	974.56	1.01	-8.00
240S	720W	1201.07	751.95	974.69	1.04	-8.04
180S	720W	1212.97	749.53	974.52	1.03	-8.06
120S	720W	1221.46	748.04	974.61	1.01	-8.08
60S	720W	1231.67	746.45	974.94	1.01	-8.12
00N	720W	1226.25	746.67	974.42	0.98	-8.17
120N	720W	1235.57	745.33	974.37	0.89	-8.20
180N	720W	1241.40	744.21	974.27	0.83	-8.23
240N	720W	1247.01	742.92	973.99	0.79	-8.25
300N	720W	1249.39	742.13	973.63	0.78	-8.27
360N	720W	1243.77	741.69		0.91	-8.31
420N	720W	1243.18	743.10	973.73	1.17	-8.34
480N	720W	1248.41	742.18	974.02	1.40	-8.36

540N	720W	1258.51	740.21	974.13	1.57	-8.39
600N	720W	1272.98	737.31	974.08	1.64	-8.42
660N	720W	1282.83	735.33	974.23	1.97	-8.45
720N	720W	1293.63	732.97	974.20	2.25	-8.47
780N	720W	1307.61	730.46	974.49	2.40	-8.50
840N	720W	1321.77	727.22	974.25	2.43	-8.53
900N	720W	1338.65	724.52	974.43	2.40	-8.55
960N	720W	1350.10	722.38	974.47	2.40	-8.58
1020N	720W	1360.14	720.29	974.24	2.40	-8.62
1080N	720W	1370.98	710.78	973.93	2.40	-8.64
1140N	720W	1391.04	714.41	974.22	2.40	-3.67
1200N	720W	1410.53	709.88	973.99	2.40	-8.70
720S	480W	1152.68	761.58	975.52	1.16	-7.71
660S	480W	1160.79	760.02	975.51	1.19	-7.74
600S	480W	1173.66	757.29	975.23	1.20	-7.76
540S	480W	1184.45	754.97	974.97	1.21	-7.78
480S	480W	1196.18	752.65	974.87	1.23	-7.82
420S	480W	1203.98	751.21	974.95	1.29	-7.85
360S	480W	1212.90	749.17	974.67	1.37	-7.87
300S	480W	1233.83	747.33		1.31	-7.90
240S	480W	1247.98	742.53	974.64	1.32	-7.93
180S	480W	1246.23	743.23	974.88	1.22	-7.95
120S	480W	1246.27	742.98	974.90	1.50	-7.97
60S	480W	1267.88	738.07	974.47	1.27	-8.00
60N	480W	1284.61	735.58	974.37	1.15	-8.08
120N	480W	1282.12	736.06	974.30	1.09	-8.10
180N	480W	1284.00	735.47	974.02	1.06	-8.13
240N	480W	1284.65	735.23	973.84	1.04	-8.16
300N	480W	1283.30	735.49	973.82	1.04	-8.18
360N	480W	1280.17	735.92	973.74	1.15	-8.20
420N	480W	1277.53	736.15	973.74	1.45	-8.23
480N	480W	1284.94	734.41	973.55	1.61	-8.26
540N	480W	1295.75			1.92	-8.28
600N	480W	1309.76			2.28	-8.31
660N	480W	1326.22	726.24	974.21	2.62	-8.34
720N	480W	1353.83	720.07	973.37	2.69	-8.36
780N	480W	1383.73	714.48	973.57	2.79	-8.39
840N	480W	1400.40	711.18	973.24	2.61	-8.42
900N	480W	1414.30	708.52	972.97	2.37	-8.45
960N	480W	1424.97	706.46	972.70	2.14	-8.47
1020N	480W	1427.74	705.96	972.58	2.01	-8.50
1080N	480W	1425.66	706.13	972.78	2.47	-8.53
1140N	480W	1434.10	704.44	973.15	2.94	-8.55
1200N	480W	1457.49	699.13	972.24	2.85	-8.58
720S	240W	1179.37	756.35	975.40	1.05	-7.59
660S	240W	1189.90	754.14	975.20	1.08	-7.63
600S	240W	1200.95	751.77	975.00	1.16	-7.65
540S	240W	1211.04	749.64	974.99	1.26	-7.67
480S	240W	1219.41	748.05	974.99	1.40	-7.71
420S	240W	1236.76	744.48	974.71	1.40	-7.74
360S	240W	1249.15	742.09	974.65	1.38	-7.76
300S	240W	1262.95	739.30	974.45	1.35	-7.78
240S	240W	1274.77	737.08	974.43	1.33	-7.82
180S	240W	1288.22	734.41	974.38	1.37	-7.84
120S	240W	1275.30	736.93		2.04?	-7.87
60S	240W	1303.92	731.15	974.21	1.54	-7.90
60N	240W	1335.25	724.79	973.67	1.42	-7.95
120N	240W	1342.66	723.17	973.35	1.33	-7.98
180N	240W	1343.87	723.11	973.36	1.19	-8.00
240N	240W	1344.97	722.82	973.24	1.18	-8.03

300N	240W	1335.97	724.37	972.98	1.12	-8.06
360N	240W	1330.62	725.54	973.17	1.18	-8.08
420N	240W	1313.16	728.26	973.30	1.96	-8.11
480N	240W	1323.79	726.07	973.57	1.82	-8.14
540N	240W	1340.74	723.24	973.40	1.86	-8.16
600N	240W	1356.42	720.13	973.46	2.05	-8.19
660N	240W	1367.66	717.70	973.39	2.30	-8.22
720N	240W	1378.46	715.29	973.32	2.60	-8.25
780N	240W	1407.82	709.29	972.73	2.42	-8.27
840N	240W	1440.59	702.93	972.63	2.44	-8.30
900N	240W	1438.07	703.77	972.59	2.07	-8.33
960N	240W	1400.56	699.14	972.11	1.94	-8.35
1020N	240W	1407.39	697.78	972.05	1.96	-8.38
1080N	240W	1484.04			2.00	-8.42
1140N	240W	1501.00			2.05	-8.44
1200N	240W	1511.80			2.05	-8.47
720S	00W	1203.21	751.52	975.04	0.83	-7.47
660S	00W	1213.10	749.48	974.97	0.95	-7.51
600S	00W	1220.12	748.18	975.18	1.15	-7.54
540S	00W	1235.42	744.04	974.62	1.23	-7.56
480S	00W	1254.68	740.74	974.46	1.30	-7.58
420S	00W	1265.27	738.67	974.34	1.26	-7.62
360S	00W	1277.16	736.28	974.18	1.25	-7.65
300S	00W	1281.75	735.51	974.36	1.35	-7.67
240S	00W	1295.22	732.68	974.21	1.48	-7.70
180S	00W	1305.00	730.67	974.28	1.71	-7.73
120S	00W	1322.45	727.01	973.98	1.76	-7.75
60S	00W	1347.97	721.75	973.47	1.64	-7.77
60N	00W	1372.37	716.56	972.52	1.27	-7.82
120N	00W	1332.09	714.94	972.64	1.17	-7.84
180N	00W	1388.63	713.48	972.31	1.09	-7.89
240N	00W	1392.45	712.98	972.51	1.10	-7.92
300N	00W	1394.87	712.40	972.52	1.24	-7.94
360N	00W	1385.02	713.32		0.93	-7.97
420N	00W	1357.09	719.80	972.83	1.43	-7.99
480N	00W	1362.59	718.92	973.16	1.62	-8.03
540N	00W	1390.09	713.45	972.98	1.52	-8.05
600N	00W	1405.47	710.56	973.04	1.72	-8.08
660N	00W	1425.31	706.40	972.70	1.76	-8.10
720N	00W	1445.41	702.27	972.41	1.79	-8.13
780N	00W	1455.87	700.36	972.26	1.58	-8.16
840N	00W	1467.00	697.49	971.38	1.47	-8.19
900N	00W	1469.85	696.78	971.06	1.34	-8.22
960N	00W	1438.41	693.17	971.09	1.45	-8.24
1020N	00W	1498.70	691.06	970.90	1.44	-8.27
1080N	00W	1513.52	683.86	971.53	1.45	-8.29
1140N	00W	1522.27	687.18	971.42	1.38	-8.33
1200N	00W	1530.33	684.86	970.60	1.37	-8.35
720S	240E	1211.07			0.97	-7.37
660S	240E	1222.05	747.45	974.97	1.16	-7.39
600S	240E	1237.93	744.21	974.98	1.40	-7.43
540S	240E	1251.81	741.29	974.84	1.55	-7.45
480S	240E	1262.21	739.22	974.76	1.57	-7.47
420S	240E	1274.72	736.58	974.54	1.63	-7.50
360S	240E	1282.50	734.99	974.41	1.63	-7.53
300S	240E	1299.40	731.37	974.22	1.85	-7.56
240S	240E	1323.31	726.32	974.15	2.28	-7.58
180S	240E	1334.82	724.23	974.15	2.20	-7.61
120S	240E	1347.10	721.75	973.96	2.17	-7.64
60S	240E	1363.09	713.34	973.73	2.32	-7.67

60N	240E	1388.13	713.03	973.30	2.47	-7.73
120N	240E	1397.59	711.11	973.30	2.60	-7.75
180N	240E	1406.40	709.21	973.22	2.76	-7.77
240N	240E	1407.91	708.99	973.03	2.53	-7.80
300N	240E	1386.92	713.98	972.58	1.14	-7.83
360N	240E	1369.80	717.73	972.80	0.91	-7.86
420N	240E	1364.03	718.59	972.97	1.35	-7.88
480N	240E	1390.30	713.22	972.35	1.11	-7.92
540N	240E	1411.25	703.63	972.01	1.37	-7.94
600N	240E	1431.08	704.61	972.08	1.69	-7.96
660N	240E	1453.84	699.59	971.83	2.12	-7.93
720N	240E	1460.78	698.53	971.70	1.77	-8.02
780N	240E	1450.89	700.97	971.46	1.00	-8.05
840N	240E	1451.10	700.61	971.27	1.16	-8.07
900N	240E	1478.79	694.91	970.94	1.26	-8.10
960N	240E	1487.13	693.21	970.87	1.33	-8.13
1020N	240E	1498.33	690.89	970.68	1.33	-8.15
1080N	240E	1509.27	688.86	970.74	1.35	-8.17
1140N	240E	1517.94	687.13	970.58	1.30	-8.21
1200N	240E	1523.43	684.99	970.44	1.32	-8.24
720S	480E	1156.16	760.26	975.32	1.16	-7.25
660S	480E	1164.29	758.37	975.13	1.34	-7.28
600S	480E	1178.64	755.43	974.80	1.22	-7.30
540S	480E	1194.21	752.32	974.70	1.23	-7.33
480S	480E	1203.87	750.22	974.56	1.42	-7.36
420S	480E	1217.31	747.28	974.29	1.54	-7.38
360S	480E	1246.02	741.55	974.34	1.36	-7.41
300S	480E	1257.29	739.40	974.35	1.89	-7.44
240S	480E	1269.02	737.13	974.26	1.86	-7.47
180S	480E	1281.06	734.77	974.29	1.97	-7.50
120S	480E	1236.70	733.75	974.42	2.07	-7.52
60S	480E	1290.38	733.04	974.50	2.20	-7.57
60N	480E	1300.68	730.93	974.44	2.31	-7.60
120N	480E	1307.32	729.43	974.13	2.26	-7.63
180N	480E	1312.67	728.32	973.95	2.20	-7.66
240N	480E	1316.40	727.38	973.70	2.19	-7.68
300N	480E	1329.06	724.85	973.38	2.02	-7.72
360N	480E	1354.51	719.71	972.76	1.69	-7.74
420N	480E	1376.58	715.20	972.38	1.62	-7.76
480N	480E	1389.22	712.85	972.32	1.53	-7.80
540N	480E	1386.99	713.45	972.23	1.30	-7.83
600N	480E	1378.50	715.15	972.43	1.44	-7.85
660N	480E	1366.84	713.12	972.15	1.62	-7.87
720N	480E	1403.38	709.63	971.82	1.66	-7.91
780N	480E	1419.06	706.38	971.57	1.68	-7.93
840N	480E	1428.71	704.37	971.36	1.65	-7.95
900N	480E	1438.40	702.61	971.41	1.63	-7.97
960N	480E	1445.91	701.21	971.39	1.62	-8.02
1020N	480E	1450.75	700.21	971.34	1.66	-8.04
1080N	480E	1452.68	699.70	971.34	1.84	-8.07
1140N	480E	1454.13	699.29	971.52	2.16	-8.09
1200N	480E	1451.73	699.61	971.95	2.77	-8.12
720S	720E	1179.24	756.13	975.09	0.52	-7.13
660S	720E	1185.44	754.90	974.99	0.49	-7.15
600S	720E	1190.81	753.80	974.88	0.47	-7.18
540S	720E	1193.72	753.10	974.70	0.49	-7.22
480S	720E	1193.32	751.98	974.47	0.51	-7.24
420S	720E	1202.75	751.00	974.35	0.55	-7.27
360S	720E	1202.16	751.01	974.33	0.67	-7.30
300S	720E	1204.26	750.64	974.50	0.82	-7.32

240S	720E	1208.05	749.80	974.44	0.91	-7.35
180S	720E	1213.84	748.45	974.26	0.99	-7.37
120S	720E	1225.76	745.92		1.01	-7.41
60S	720E	1236.28	744.04	974.27	1.18	-7.43
60N	720E	1252.28	740.80	974.18	1.32	-7.48
120N	720E	1264.14	733.33	973.93	1.32	-7.53
180N	720E	1279.03	735.38	973.76	1.27	-7.55
240N	720E	1292.23	732.74	973.60	1.25	-7.57
300N	720E	1295.83	731.97	973.63	1.39	-7.60
360N	720E	1301.36	730.71	973.62	1.61	-7.63
420N	720E	1307.12	729.40	973.60	1.83	-7.66
480N	720E	1314.07	727.79	973.54	2.07	-7.63
540N	720E	1328.81	724.68	973.10	1.95	-7.71
600N	720E	1348.30	720.62	972.33	1.54	-7.74
660N	720E	1366.06	717.17	972.02	1.31	-7.76
720N	720E	1379.26	714.74	971.98	1.20	-7.79
780N	720E	1384.10	713.77	971.89	1.19	-7.82
840N	720E	1391.30	712.19	971.68	1.20	-7.85
900N	720E	1397.26	710.86	971.51	1.26	-7.88
960N	720E	1406.51	708.87	971.27	1.27	-7.91
1020N	720E	1421.46	705.80	971.01	1.24	-7.93
1080N	720E	1433.95	703.20	970.83	1.29	-7.95
1140N	720E	1447.54	700.34	970.55	1.29	-7.97
1200N	720E	1454.26	699.14	970.65	1.34	-8.00

TAY #2 GRID DATA

GB 78-8			1160.57	762.23	972.64	0.0	-11.64
BL 0 N	720W		1162.74	761.95	973.59	0.77	-11.54
BL 0 N	660W		1148.34	764.61	973.38	0.63	-11.52
BL 0 N	600W		1134.56	767.26	973.51	0.71	-11.48
BL 0 N	540W		1126.21	768.46	973.18	0.76	-11.46
BL 0 N	480W		1114.50	770.56	973.20	0.88	-11.43
BL 0 N	420W		1113.40	770.45	972.74	0.72	-11.41
BL 0 N	360W		1114.15	770.28	972.59	0.57	-11.38
BL 0 N	300W		1110.64			0.58	-11.35
BL 0 N	240W		1112.41	770.87	972.84	0.50	-11.32
BL 0 N	180W		1108.81	771.97	973.32	0.54	-11.29
BL 0 N	120W		1106.03	772.60	973.48	0.58	-11.26
BL 0 N	60W		1105.46	772.58	973.45	0.64	-11.23
BL 0 N	00W		1090.56	775.48	973.55	0.67	-11.21
BL 0 N	60E		1084.29	776.61	973.59	0.76	-11.18
BL 0 N	120E		1090.74	775.39	974.00	1.12	-11.15
BL 0 N	180E		1077.55	777.43	973.56	1.14	-11.13
BL 0 N	240E		1061.83	780.13	973.35	1.20	-11.09
BL 0 N	300E		1039.66	783.41	972.97	1.76	-11.07
BL 0 N	360E		1009.09	787.95	971.68	1.76	-11.05
BL 0 N	420E		1009.04	787.67	972.11	2.44	-11.01
BL 0 N	480E		1024.16	785.23	972.15	1.98	-10.97
BL 0 N	540E		1048.82	781.06	973.00	2.27	-10.95
BL 0 N	600E		1077.08	776.39	974.31	2.81	-10.92
BL 0 N	660E		1099.07	772.51	974.80	2.95	-10.89
BL 0 N	720E		1123.01	768.34	974.68	2.40	-10.87
	720S	720W	1270.16	740.22	973.89	1.94	-11.23
	660S	720W	1271.61	759.15	973.20	2.06	-11.25
	600S	720W	1266.23	740.67	973.59	1.99	-11.28
	540S	720W	1251.15	743.59	973.29	1.69	-11.31
	480S	720W	1242.63	745.38	973.40	1.67	-11.34
	420S	720W	1232.92	746.97	973.17	1.73	-11.37
	360S	720W	1219.17	547.00	770.59	1.77	-11.39
	300S	720W	1203.29	752.37	972.85	1.72	-11.41
	240S	720W	1133.51	756.73	973.16	1.48	-11.44
	180S	720W	1164.88	760.18	972.76	1.22	-11.46
	120S	720W	1154.37	763.54	973.81	0.95	-11.49
	60S	720W	1152.45	763.72	973.30	0.66	-11.52
	60N	720W	1154.01	763.50	973.27	0.60	-11.57
	120N	720W	1137.73	765.90	972.65	0.72	-11.60
	180N	720W	1125.39	767.82	973.10	1.65	-11.63
	240N	720W	1132.31	766.37	973.32	2.02	-11.66
	300N	720W	1157.30	761.80	973.30	1.81	-11.68
	360N	720W	1192.03	756.17	974.23	1.75	-11.71
	420N	720W	1206.08	753.63	974.17	1.58	-11.74
	480N	720W	1228.07	750.06	974.67	1.47	-11.77

540N	720W	1238.23	748.30	974.61	1.20	-11.80
600N	720W	1248.50	746.40	974.45	1.04	-11.82
660N	720W	1255.15	745.43	974.59	0.92	-11.85
720N	720W	1263.97	743.84	974.61	0.87	-11.88
720S	480W	1191.91	756.01	974.65	1.76	-11.11
660S	480W	1139.41	756.26	974.28	1.63	-11.13
600S	480W	1189.90	755.58	973.53	1.50	-11.16
540S	480W	1194.65	754.60	973.36	1.42	-11.18
480S	480W	1192.90	755.07	973.35	1.30	-11.21
420S	480W	1189.23	755.84	973.28	1.20	-11.24
360S	480W	1181.93	757.51	973.41	1.08	-11.26
300S	480W	1176.72	758.42	973.28	1.07	-11.30
240S	480W	1163.47	760.89	973.08	0.96	-11.32
180S	480W	1147.70	763.81	972.90	0.91	-11.35
120S	480W	1147.38	764.08	973.07	0.89	-11.37
60S	480W	1118.88	769.55	973.16	0.98	-11.40
60N	480W	1114.04	770.67	973.19	0.89	-11.46
120N	480W	1114.47	770.65	973.51	1.17	-11.49
180N	480W	1132.02	767.05	973.13	1.06	-11.52
240N	480W	1144.61	764.88	973.57	1.30	-11.55
300N	480W	1164.65	761.05	973.65	1.39	-11.57
360N	480W	1192.35	755.92	973.92	1.52	-11.60
420N	480W	1201.78	754.62	974.16	1.28	-11.62
480N	480W	1212.02	753.08	974.37	1.10	-11.65
540N	480W	1217.18	752.43	974.52	0.94	-11.68
600N	480W	1223.62	751.17	974.41	0.89	-11.71
660N	480W	1232.33	749.10	973.95	0.87	-11.74
720N	480W	1240.28	747.50	973.84	0.87	-11.77
720S	240W	1133.15	766.97	973.89	1.16	-10.99
660S	240W	1131.83	766.86	973.48	1.14	-11.02
600S	240W	1136.30	765.91	973.36	1.13	-11.05
540S	240W	1140.59	765.35	973.58	1.13	-11.07
480S	240W	1141.76	764.25	972.64	1.09	-11.10
420S	240W	1146.91	764.33	973.70	1.11	-11.12
360S	240W	1147.19	764.37	973.71	1.06	-11.16
300S	240W	1149.10	764.05	973.78	1.11	-11.18
240S	240W	1150.91	763.40	973.61	1.27	-11.21
180S	240W	1147.50	764.03	973.59	1.31	-11.24
120S	240W	1125.87	768.17	973.00	0.73	-11.26
60S	240W	1110.22	770.95	972.68	0.64	-11.28
60N	240W	1121.11	769.97	973.58	0.51	-11.35
120N	240W	1123.51	769.61	973.78	0.63	-11.37
180N	240W	1127.41	768.57	973.64	0.82	-11.40
240N	240W	1131.93	767.66	973.84	1.10	-11.44
300N	240W	1141.89	766.10	974.37	1.30	-11.46
360N	240W	1157.29	763.22	974.48	1.37	-11.48
420N	240W	1160.87	762.47	974.68	1.66	-11.51
480N	240W	1183.96	758.34	974.73	1.46	-11.54
540N	240W	1205.35	754.63	974.89	1.26	-11.56
600N	240W	1217.44	752.50	974.89	1.10	-11.59
660N	240W	1228.61	750.60	974.98	0.99	-11.62
720N	240W	1240.28	748.37	974.89	0.93	-11.65
720S	00W	1089.33	775.41	973.94	1.03	-10.87
660S	00W	1085.54	776.11	973.88	1.04	-10.91
600S	00W	1087.62	775.64	973.81	1.06	-10.94
540S	00W	1090.17	774.86	973.53	1.10	-10.96
480S	00W	1091.71	774.50	973.47	1.12	-10.98
420S	00W	1093.47	774.22	973.49	1.13	-11.02
360S	00W	1093.76	774.00	973.26	1.09	-11.05
300S	00W	1092.10	774.32	973.17	1.01	-11.07

240S	00W	1093.61	774.20	973.24	0.95	-11.10
180S	00W	1096.20	774.04	973.49	0.88	-11.12
120S	00W	1098.41	773.66	973.43	0.82	-11.15
60S	00W	1086.39	776.15	973.47	0.69	-11.18
60N	00W	1038.90	775.56	973.41	0.80	-11.24
120N	00W	1091.04	774.84	973.37	1.09	-11.26
180N	00W	1100.20	772.71	973.37	1.49	-11.28
240N	00W	1113.52	770.50	974.10	1.92	-11.32
300N	00W	1144.03	764.81	974.45	2.16	-11.35
360N	00W	1174.69	759.51	975.18	2.31	-11.37
420N	00W	1191.32	756.85	975.39	2.06	-11.40
480N	00W	1198.58	755.60	975.36	1.72	-11.43
540N	00W	1213.30	753.19	975.39	1.58	-11.46
600N	00W	1220.60	752.02	975.41	1.39	-11.48
660N	00W	1230.57	750.14	975.29	1.28	-11.51
720N	00W	1239.35	748.39	975.10	1.18	-11.54
720S	240E	1043.12	783.08	973.26	1.42	-10.77
660S	240E	1035.51	784.39	973.09	1.43	-10.80
600S	240E	1033.45	784.59	972.64	1.19	-10.82
540S	240E	1036.64	784.12	972.72	1.15	-10.85
480S	240E	1038.81	783.53	972.51	1.14	-10.87
420S	240E	1038.98	783.40	972.35	1.11	-10.90
360S	240E	1041.07	783.17	972.42	1.05	-10.94
300S	240E	1041.82	783.07	972.38	0.99	-10.96
240S	240E	1043.64	782.77	972.37	0.95	-10.98
180S	240E	1040.39	783.38	972.35	0.97	-11.01
120S	240E	1044.52	782.71	972.49	1.02	-11.04
60S	240E	1059.92	780.24	973.10	1.17	-11.06
60N	240E	1050.44	781.75	972.92	1.36	-11.12
120N	240E	1056.77	780.33	972.85	1.53	-11.15
180N	240E	1063.76	778.34	972.53	1.88	-11.17
240N	240E	1076.84	776.26	973.35	2.31	-11.20
300N	240E	1109.12	769.82	973.45	2.71	-11.23
360N	240E	1133.23	765.00	973.52	3.00	-11.25
420N	240E	1150.12	763.63	975.33	2.98	-11.28
480N	240E	1166.91	761.12	975.96	2.93	-11.31
540N	240E	1176.09	759.61	975.91	2.68	-11.34
600N	240E	1185.53	758.21	976.07	2.46	-11.37
660N	240E	1194.33	756.36	975.73	2.30	-11.39
720N	240E	1204.38	754.68	975.73	2.10	-11.42
720S	480E	996.55	791.05	972.55	1.53	-10.65
660S	480E	992.50	791.33	971.90	1.40	-10.67
600S	480E	986.82	792.27	971.90	1.57	-10.70
540S	480E	982.32	792.69	971.73	1.87	-10.73
480S	480E	981.67	792.69	971.90	2.19	-10.76
420S	480E	983.97	792.00	971.89	2.46	-10.78
360S	480E	984.77	790.79	971.80	2.50	-10.82
300S	480E	997.43	789.45	971.83	2.44	-10.85
240S	480E	1007.22	787.95	971.89	2.15	-10.87
180S	480E	1011.46	786.99	971.70	2.13	-10.89
120S	480E	1018.76	785.83	971.70	1.92	-10.92
60S	480E	1019.84	785.80	971.94	2.02	-10.96
60N	480E	1024.63	785.03	972.12	2.10	-11.00
120N	480E	1025.33	784.80	972.17	2.28	-11.04
180N	480E	1024.23	784.85	972.42	2.71	-11.06
240N	480E	1027.98	783.86	972.28	2.87	-11.09
300N	480E	1032.76	783.01	972.61	3.16	-11.11
360N	480E	1038.08	781.35	972.83	3.56	-11.15
420N	480E	1050.86	780.06	973.29	3.39	-11.17
480N	480E	1070.51	777.13	973.63	2.93	-11.20

540N	480E	1039.55	774.05	973.82	2.58	-11.22
600N	480E	1104.95	771.65	974.22	2.46	-11.25
660N	480E	1118.00	769.55	974.41	2.29	-11.28
720N	480E	1133.54	766.99	974.52	2.00	-11.30
720S	720E	972.28	794.81	971.86	1.61	-10.54
660S	720E	968.19	795.22	972.32	2.46	-10.56
600S	720E	984.72	791.69	972.67	3.21	-10.59
540S	720E	1012.57	786.62	973.13	3.44	-10.62
480S	720E	1043.31	781.08	973.67	3.67	-10.65
420S	720E	1078.57	775.24	974.47	3.60	-10.68
360S	720E	1108.44	770.18	974.89	3.38	-10.70
300S	720E	1124.09	767.94	975.21	2.98	-10.73
240S	720E	1133.16	766.34	975.87	3.53	-10.76
180S	720E	1137.36	765.57	974.82	2.47	-10.78
120S	720E	1135.41	766.17	974.95	2.40	-10.81
60S	720E	1137.97	765.56	974.72	2.32	-10.84
60N	720E	1131.84	766.69	974.94	2.63	-10.88
120N	720E	1143.99	764.39	975.18	2.88	-10.92
180N	720E	1138.64	765.52	975.10	2.72	-10.95
240N	720E	1134.39	765.98	974.25	2.26	-10.98
300N	720E	1119.76	768.17	973.71	2.35	-11.00
360N	720E	1105.90	771.19	973.79	2.10	-11.04
420N	720E	1082.02	775.11	972.93	1.91	-11.06
480N	720E	1049.60	780.01	972.34	2.64	-11.08
540N	720E	1053.52	779.61	972.40	2.38	-11.11
600N	720E	1060.86	778.69	972.46	1.98	-11.14
660N	720E	1079.26	776.23	972.93	1.43	-11.17
720N	720E	1097.04	773.54	973.38	1.18	-11.19

APPENDIX B: Tay #1 & Tay #2 Non-Linear Gravity Data

Elevation Effect Gravity = g_{EE} (mgal)

Station elevation = h (meters)

Tay #1 $g_{EE} = 936.71 - 0.1270415h - 0.0000283475h^2$

Tay #2 $g_{EE} = 908.65 - 0.085513h - 0.000042523h^2$

TAY #1		STATION COORD. (meters)	ELEVATION (meters)	OBSERVED GRAVITY (mgal)	ADJUSTED GRAVITY (mgal)	ELEVATION EFFECT G (mgal)	N.L. BOUG GRAVITY (mgal)
OB	72-7						
OB	72-7		1443.88	702.45	695.37	694.18	1.19
BL	N	720W	1228.51	746.90	739.69	737.34	1.85
BL	N	640W	1233.88	745.58	738.63	736.30	1.83
BL	N	560W	1261.41	739.80	733.02	731.35	1.67
BL	N	480W	1271.91	737.92	731.14	729.27	1.87
BL	N	400W	1280.78	736.29	729.51	727.50	2.01
BL	N	320W	1291.16	734.13	727.47	725.42	2.05
BL	N	240W	1299.27	732.41	725.82	723.80	2.02
BL	N	160W	1309.61	730.12	723.60	721.72	1.88
BL	N	80W	1321.15	727.63	721.19	719.39	1.80
BL	N	190W	1321.73	725.33	718.92	717.25	1.67
BL	N	120W	1342.83	722.98	716.53	715.00	1.58
BL	N	50W	1350.67	721.34	714.93	713.40	1.53
BL	N	20W	1362.60	718.81	712.47	710.97	1.50
BL	N	60E	1369.21	717.36	711.04	709.62	1.42
BL	N	120E	1373.47	716.42	710.17	708.75	1.42
BL	N	180E	1375.81	715.62	709.68	708.06	1.62
BL	N	240E	1374.87	715.48	710.09	708.05	2.04
BL	N	300E	1364.95	717.87	712.74	710.49	2.25
BL	N	360E	1344.08	722.16	717.05	714.74	2.30
BL	N	420E	1318.48	727.29	722.15	719.93	2.22
BL	N	480E	1294.28	732.17	726.86	724.80	2.06

RL 0 N	540S	1269.75	737.18	731.71	729.89	1.82	
BL 0 N	600S	1242.19	742.20	736.77	735.16	1.61	
PL 0 N	660S	1235.39	743.92	737.87	736.50	1.37	
RL 0 N	720S	1244.04	742.39	736.37	734.79	1.58	
	720S	1130.74	765.60	759.19	756.81	2.38	
	660S	720W	1143.56	763.12	756.60	754.36	2.24
	600S	720W	1152.30	761.47	754.85	752.68	2.17
	540S	720W	1161.12	759.59	752.88	750.98	1.90
	480S	720W	1171.01	757.74	750.96	749.07	1.89
	420S	720W	1184.46	755.25	748.40	746.46	1.94
	360S	720W	1193.57	753.58	746.65	744.69	1.96
	300S	720W	1193.72	753.01	746.02	744.66	1.36
	240S	720W	1201.57	751.95	744.95	743.23	1.72
	180S	720W	1212.97	749.53	742.50	740.90	1.60
	120S	720W	1221.46	748.04	740.97	739.24	1.73
	60S	720W	1231.67	746.45	739.34	737.23	2.11
	60N	720W	1228.25	746.67	739.48	737.91	1.57
	120N	720W	1235.57	745.33	738.02	735.46	1.55
	180N	720W	1241.40	744.21	736.81	735.31	1.49
	240N	720W	1247.01	742.92	735.46	734.21	1.25
	300N	720W	1249.39	742.13	734.64	733.74	0.90
	360N	720W	1243.77	741.69	734.29	734.35	
	420N	720W	1243.18	743.10	735.93	734.96	0.97
	480N	720W	1248.41	742.18	735.22	733.93	1.29
	540N	720W	1258.51	740.21	733.39	731.93	1.46
	600N	720W	1272.98	737.31	730.58	729.05	1.53
	660N	720W	1282.82	735.33	728.95	727.09	1.76
	720N	720W	1293.63	732.97	726.75	724.93	1.82
	780N	720W	1307.61	730.46	724.36	722.12	2.24
	840N	720W	1321.77	727.52	721.42	719.26	2.16
	900N	720W	1338.65	724.52	718.37	715.85	2.52
	960N	720W	1350.18	722.38	716.20	713.50	2.70
	1020N	720W	1360.14	720.29	714.07	711.47	2.60
	1080N	720W	1376.98	716.78	710.54	708.03	2.51
	1140N	720W	1391.04	714.41	708.14	705.14	3.00
	1200N	720W	1410.53	709.88	703.58	701.11	2.47
	720S	480W	1152.68	761.58	755.03	752.61	2.42
	660S	480W	1160.79	760.02	753.47	751.04	2.43
	600S	480W	1173.66	757.29	750.73	748.56	2.17
	540S	480W	1184.45	754.97	748.40	746.47	1.93
	480S	480W	1196.18	752.65	746.06	744.18	1.88
	420S	480W	1203.98	751.21	744.65	742.66	1.99
	360S	480W	1212.90	749.17	742.67	740.92	1.75
	300S	480W	1233.83	747.33	740.74	736.81	
	240S	480W	1247.98	742.53	735.92	734.21	1.91
	180S	480W	1246.23	743.23	736.50	734.36	2.14
	120S	480W	1246.27	742.98	736.51	734.35	2.16
	60S	480W	1267.88	738.47	731.94	730.07	1.87
	60N	480W	1284.61	735.58	728.65	726.73	1.92
	120N	480W	1282.12	736.06	729.05	727.23	1.82
	180N	480W	1284.98	735.47	728.40	726.94	1.56
	240N	480W	1284.65	735.23	728.11	726.72	1.39
	300N	480W	1283.30	735.49	728.35	726.99	1.36
	360N	480W	1280.17	735.92	728.87	727.62	1.25
	420N	480W	1277.53	736.15	729.37	728.15	1.22
	480N	480W	1284.94	734.41	727.76	726.67	1.09
	540N	480W	1295.75			724.50	
	600N	480W	1309.76			721.69	
	660N	480W	1326.22	726.24	720.52	719.37	2.15
	720N	480W	1353.83	720.07	714.40	712.76	1.64

780N	480W	1383.73	714.48	703.88	706.64	2.24
840N	480W	1400.40	711.18	705.37	703.21	2.16
900N	480W	1414.30	708.52	702.44	700.33	2.11
960N	480W	1424.97	706.46	700.13	698.12	2.01
1020N	480W	1427.74	705.96	699.47	697.54	1.93
1080N	480W	1425.66	706.13	700.07	697.98	2.09
1140N	480W	1434.10	704.44	698.83	696.22	2.61
1200N	480W	1457.49	699.18	693.45	691.33	2.12
720S	240W	1179.37	756.35	749.81	747.45	2.36
660S	240W	1189.90	754.14	747.59	745.41	2.18
600S	240W	1200.95	751.77	745.28	743.25	2.03
540S	240W	1211.64	749.64	743.23	741.17	2.06
480S	240W	1219.41	748.05	741.74	739.64	2.10
420S	240W	1236.78	744.48	738.14	736.23	1.91
360S	240W	1249.15	742.09	735.71	733.78	1.92
300S	240W	1262.95	739.30	732.87	731.05	1.82
240S	240W	1274.77	737.08	730.59	728.70	1.89
180S	240W	1288.32	734.41	727.94	725.99	1.95
120S	240W	1275.36	736.93	731.10	728.58	2.52
60S	240W	1303.92	731.15	724.79	722.86	1.93
60N	240W	1335.25	724.79	718.26	716.54	1.72
120N	240W	1342.66	723.17	716.52	715.03	1.49
180N	240W	1343.87	723.11	716.30	714.79	1.51
240N	240W	1344.97	722.82	715.97	714.56	1.41
300N	240W	1335.97	724.37	717.43	716.39	1.04
360N	240W	1330.62	725.54	718.64	717.43	1.16
420N	240W	1313.16	728.26	722.11	721.00	1.11
480N	240W	1323.79	726.67	720.35	718.86	1.49
540N	240W	1340.74	723.24	716.94	715.42	1.52
600N	240W	1356.42	720.13	713.99	712.23	1.76
660N	240W	1367.66	717.70	711.78	709.94	1.84
720N	240W	1378.46	715.29	709.64	707.72	1.92
780N	240W	1407.82	709.29	703.44	701.67	1.77
840N	240W	1440.59	702.93	697.07	694.87	2.20
900N	240W	1438.07	703.77	697.51	695.39	2.12
960N	240W	1460.56	699.14	692.73	690.69	2.04
1020N	240W	1467.39	697.78	691.36	689.25	2.11
1080N	240W	1484.04			685.74	
1140N	240W	1501.00			682.15	
1200N	240W	1511.80			679.86	
720S	00W	1203.21	751.52	744.88	742.81	2.07
660S	00W	1213.10	749.48	742.92	740.83	2.04
600S	00W	1220.12	748.18	741.79	739.50	2.29
540S	00W	1235.42	744.64	738.31	736.49	1.82
480S	00W	1254.68	740.74	734.46	732.69	1.77
420S	00W	1265.27	738.67	732.31	730.59	1.72
360S	00W	1277.16	736.28	729.88	728.22	1.66
300S	00W	1281.73	735.51	729.19	727.31	1.88
240S	00W	1295.22	732.68	726.46	724.61	1.95
180S	00W	1305.00	730.67	724.65	722.64	2.01
120S	00W	1322.45	727.01	721.02	719.13	1.89
60S	00W	1347.97	721.75	715.62	713.95	1.67
60N	00W	1372.37	716.56	710.01	708.97	1.04
120N	00W	1382.09	714.94	708.27	706.93	1.29
180N	00W	1388.63	713.48	706.68	705.63	1.05
240N	00W	1392.45	712.98	706.16	704.85	1.31
300N	00W	1394.37	712.40	705.70	704.35	1.35
360N	00W	1385.02	713.32	706.28	705.38	
420N	00W	1357.09	719.80	713.24	712.10	1.14
480N	00W	1362.59	718.92	712.51	711.97	1.54

540M	20W	1390.89	713.45	706.92	705.17	1.75
600M	20W	1405.47	710.56	704.20	702.16	2.04
660M	20W	1425.31	706.40	700.06	698.05	2.01
720M	20W	1445.41	702.27	695.93	693.86	2.07
780M	20W	1455.87	700.36	693.78	691.67	2.11
840M	20W	1467.00	697.49	690.77	689.33	1.44
900M	20W	1469.85	696.78	689.90	688.73	1.17
960M	20W	1488.41	693.17	686.38	684.32	1.56
1020M	20W	1498.70	691.06	684.23	682.64	1.59
1080M	20W	1513.52	688.86	682.02	679.49	2.53
1140M	20W	1522.27	687.18	680.23	677.63	2.60
1200M	20W	1530.35	684.86	677.85	675.91	1.97
720S	240F	1211.07			741.28	
660S	240F	1222.05	747.45	741.22	739.12	2.10
600S	240F	1237.93	744.21	738.18	736.00	2.18
540S	240F	1251.81	741.29	735.39	733.26	2.13
480S	240F	1262.21	739.22	733.32	731.19	2.13
420S	240F	1274.72	736.58	730.71	728.71	2.00
360S	240F	1282.50	734.99	729.09	727.15	1.94
300S	240F	1299.40	731.67	725.66	723.77	1.89
240S	240F	1323.31	726.32	721.02	718.95	2.07
180S	240F	1334.82	724.23	718.82	716.62	2.20
120S	240F	1347.10	721.75	716.28	714.13	2.15
60S	240F	1363.09	718.34	712.99	710.87	2.12
60M	240F	1388.13	713.03	707.77	705.74	2.03
120M	240F	1397.59	711.11	705.96	703.73	2.17
180M	240F	1406.40	709.21	704.20	701.97	2.23
240M	240F	1407.91	708.99	703.72	701.66	2.06
300M	240F	1386.92	712.93	707.29	705.99	1.30
360M	240F	1369.80	717.73	710.78	709.50	1.28
420M	240F	1364.03	718.59	712.06	710.63	1.38
480M	240F	1390.30	713.22	706.41	705.29	1.12
540M	240F	1411.25	708.63	702.06	700.96	1.09
600M	240F	1431.08	704.61	698.24	696.85	1.49
660M	240F	1453.84	699.59	693.73	692.10	1.63
720M	240F	1460.78	698.53	692.20	690.64	1.64
780M	240F	1450.89	700.97	693.92	692.71	1.21
840M	240F	1451.10	700.61	693.70	692.67	1.03
900M	240F	1478.79	694.91	688.07	686.35	1.22
960M	240F	1487.13	693.21	685.41	685.09	1.32
1020M	240F	1498.33	690.89	684.07	682.72	1.35
1080M	240F	1509.27	688.86	682.04	680.40	1.64
1140M	240F	1517.94	687.13	680.22	678.55	1.67
1200M	240F	1528.43	684.99	678.07	676.31	1.76
720S	480F	1156.18	760.26	754.17	751.93	2.24
660S	480F	1164.29	758.37	752.43	750.37	2.06
600S	480F	1178.64	755.43	749.35	747.59	1.76
540S	480F	1194.21	752.32	746.27	744.57	1.70
480S	480F	1203.87	750.22	744.28	742.63	1.60
420S	480F	1217.31	747.28	741.44	740.05	1.39
360S	480F	1246.02	741.55	736.00	734.40	1.60
300S	480F	1257.29	739.40	733.85	732.17	1.68
240S	480F	1269.02	737.13	731.52	729.84	1.68
180S	480F	1281.08	734.77	729.24	727.44	1.80
120S	480F	1286.70	733.75	728.30	726.31	1.99
60S	480F	1290.38	733.04	727.67	725.58	2.09
60M	480F	1300.68	730.93	725.64	723.31	2.13
120M	480F	1307.32	729.43	724.06	722.18	1.88
180M	480F	1312.67	728.32	722.86	721.10	1.76
240M	480F	1316.40	727.33	721.89	720.35	1.54

300N	480F	1329.06	724.85	719.15	717.79	1.36
360N	480F	1354.51	719.71	713.66	712.62	1.04
420N	480F	1376.58	715.20	709.06	708.11	0.95
480N	480F	1399.22	712.85	706.58	705.51	1.07
540N	480F	1385.99	713.45	706.92	705.97	0.95
600N	480F	1378.50	715.15	708.74	707.72	1.02
660N	480F	1386.84	713.12	706.87	706.00	0.87
720N	480F	1403.38	709.63	703.38	702.59	0.79
780N	480F	1419.06	706.32	700.13	699.35	0.78
840N	480F	1428.71	704.37	698.07	697.34	0.73
900N	480F	1438.40	702.61	696.27	695.32	0.95
960N	480F	1445.91	701.21	694.81	693.75	1.06
1020N	480F	1450.75	700.21	693.63	692.74	1.09
1080N	480F	1452.68	699.70	693.47	692.34	1.13
1140N	480F	1454.13	699.29	693.36	692.03	1.33
1200N	480F	1451.73	699.61	694.26	692.54	1.72
720S	720F	1179.24	756.13	749.52	747.48	2.04
660S	720F	1185.44	754.90	748.24	746.27	1.97
600S	720F	1190.81	753.80	747.09	745.23	1.86
540S	720F	1193.72	753.10	746.37	744.66	1.71
480S	720F	1198.32	751.98	745.25	743.77	1.48
420S	720F	1202.75	751.00	744.28	742.90	1.38
360S	720F	1202.16	751.01	744.38	743.02	1.36
300S	720F	1204.26	750.64	744.14	742.61	1.53
240S	720F	1208.05	749.80	743.36	741.37	1.49
180S	720F	1213.84	748.45	742.07	740.73	1.34
120S	720F	1225.76	745.92	739.52	738.40	
60S	720F	1235.28	744.04	737.79	736.32	1.46
60N	720F	1252.28	740.80	734.64	733.16	1.48
120N	720F	1264.14	738.33	732.12	730.31	1.31
180N	720F	1279.03	735.38	729.10	727.35	1.25
240N	720F	1292.23	732.74	726.42	725.21	1.21
300N	720F	1295.83	731.97	725.76	724.49	1.27
360N	720F	1301.36	730.71	724.69	723.38	1.31
420N	720F	1307.12	729.40	723.57	722.22	1.35
480N	720F	1314.07	727.79	722.18	720.32	1.36
540N	720F	1322.41	724.68	718.92	717.34	1.03
600N	720F	1345.30	720.62	714.42	713.39	0.53
660N	720F	1355.04	717.17	710.72	710.26	0.46
720N	720F	1370.27	714.74	707.15	707.56	0.59
780N	720F	1384.10	712.77	707.14	706.57	0.57
840N	720F	1391.30	712.19	705.54	705.03	0.46
900N	720F	1397.26	710.06	704.24	703.36	0.38
960N	720F	1406.51	708.87	702.23	701.95	0.28
1020N	720F	1421.46	705.80	699.11	698.85	0.26
1080N	720F	1433.95	703.20	696.54	696.25	0.29
1140N	720F	1447.54	700.34	693.66	693.41	0.25
1200N	720F	1454.26	699.14	692.48	692.01	0.47

EXECUTION TERMINATED 18:24:51

\$SIGOFF

Tay # 2 Non-Linear Gravity Data

GB 78-8		1160.57	762.28	750.64	752.13	-1.49
BL 0 N	720W	1162.74	761.95	751.18	751.73	-0.55
BL 0 N	660W	1148.34	764.61	753.72	754.37	-0.66
BL 0 N	600W	1134.56	767.26	756.49	756.89	-0.40
BL 0 N	540W	1126.21	768.46	757.76	758.41	-0.65
BL 0 N	480W	1114.50	770.56	760.01	760.52	-0.51
BL 0 N	420W	1113.40	770.45	759.76	760.72	-0.96
BL 0 N	360W	1114.15	770.28	759.47	760.59	-1.12
BL 0 N	300W	1110.64		750.64	761.22	
BL 0 N	240W	1112.41	770.87	760.05	760.90	-0.85
BL 0 N	180W	1108.81	771.97	761.22	761.55	-0.33
BL 0 N	120W	1106.03	772.60	761.92	762.05	-0.13
BL 0 N	60W	1105.46	772.58	761.99	762.15	-0.16
BL 0 N	00W	1090.56	775.48	764.94	764.82	0.12
BL 0 N	60E	1084.29	776.61	766.19	765.93	0.25
BL 0 N	120E	1090.74	775.39	765.36	764.78	0.58
BL 0 N	180E	1077.55	777.43	767.44	767.13	0.31
BL 0 N	240E	1061.83	780.13	770.24	769.90	0.34
BL 0 N	300E	1039.66	783.41	774.10	773.78	0.32
BL 0 N	360E	1009.09	787.95	778.66	779.06	-0.40
BL 0 N	420E	1009.04	787.67	779.10	779.07	0.03
BL 0 N	480E	1024.16	785.23	776.24	776.47	-0.22
BL 0 N	540E	1048.82	781.06	772.38	772.18	0.20
BL 0 N	600E	1077.08	776.39	768.28	767.21	1.07
BL 0 N	660E	1099.07	772.51	764.57	763.30	1.27
BL 0 N	720E	1123.01	768.34	759.87	758.99	0.88
	720S	1270.16	740.22	730.93	731.43	-0.50
	660S	1271.61	739.15	729.96	731.15	-1.19
	600S	1266.23	740.67	731.38	732.19	-0.81
	540S	1251.15	743.59	733.97	735.09	-1.12
	480S	1242.63	745.38	735.71	736.73	-1.02
	420S	1232.92	746.97	737.33	738.58	-1.25
	360S	1219.17		750.64	741.19	
	300S	1203.29	752.37	742.68	744.13	-1.50
	240S	1183.51	755.73	746.77	747.88	-1.11
	180S	1164.88	760.18	749.94	751.33	-1.40
	120S	1154.37	763.54	753.00	753.27	-0.27
	60S	1152.45	763.72	752.86	753.62	-0.76
	60N	1154.01	763.50	752.53	753.34	-0.81
	120N	1137.73	765.90	755.02	756.31	-1.20
	180N	1125.39	767.82	757.84	758.56	-0.72
	240N	1132.31	766.37	756.73	757.30	-0.57
	300N	1157.30	761.80	751.93	752.73	-0.81
	360N	1192.03	756.17	746.21	746.29	-0.08
	420N	1206.08	753.63	743.47	743.66	-0.19
	480N	1228.07	750.06	739.76	739.50	0.26

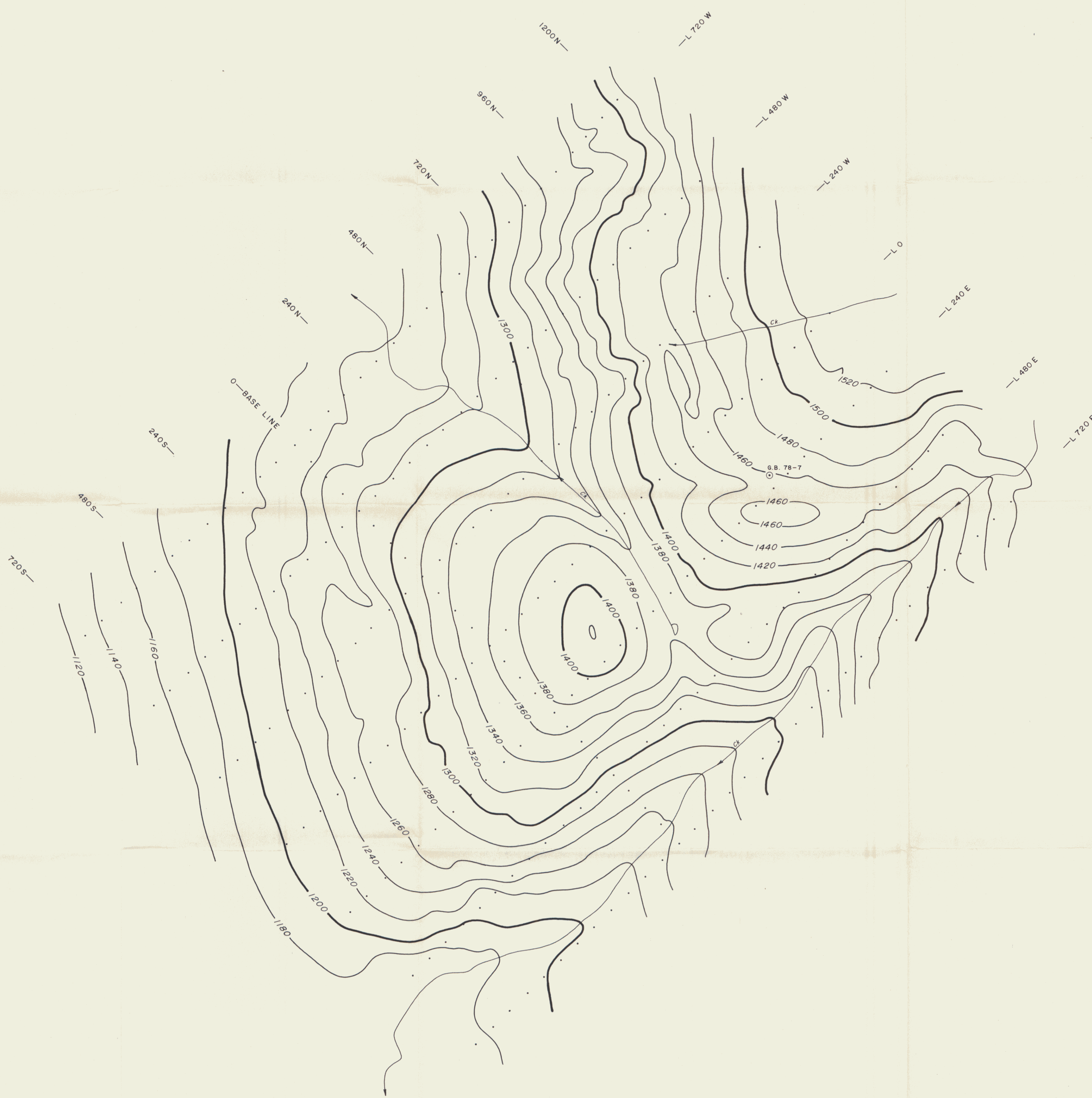
540N	720W	1238.23	748.36	737.76	737.57	0.19
600N	720W	1248.56	746.40	735.62	735.59	0.03
660N	720W	1255.15	745.43	734.50	734.32	0.18
720N	720W	1263.97	743.84	732.83	732.63	0.21
720S	480W	1191.91	756.01	746.66	746.31	0.34
660S	480W	1189.41	756.26	746.76	746.78	-0.02
600S	480W	1189.90	755.58	745.92	746.69	-0.77
540S	480W	1194.65	754.60	744.84	745.80	-0.96
480S	480W	1192.90	755.07	745.16	746.13	-0.96
420S	480W	1189.23	755.84	745.80	746.81	-1.02
360S	480W	1181.93	757.51	747.33	748.17	-0.85
300S	480W	1176.72	758.42	748.19	749.14	-0.95
240S	480W	1163.47	760.89	750.53	751.59	-1.07
180S	480W	1147.70	763.81	753.37	754.49	-1.13
120S	480W	1147.38	764.08	753.60	754.55	-0.95
60S	480W	1118.88	769.55	759.13	759.73	-0.60
60N	480W	1114.04	770.67	760.09	760.61	-0.51
120N	480W	1114.47	770.65	760.33	760.53	-0.20
180N	480W	1132.02	767.05	756.59	757.35	-0.76
240N	480W	1144.61	764.88	754.63	755.06	-0.43
300N	480W	1164.65	761.05	750.87	751.38	-0.51
360N	480W	1192.35	755.92	745.84	746.23	-0.39
420N	480W	1201.78	754.62	744.28	744.46	-0.18
480N	480W	1212.02	753.08	742.53	742.54	-0.01
540N	480W	1217.18	752.43	741.69	741.56	0.13
600N	480W	1223.62	751.17	740.35	740.34	0.01
660N	480W	1232.33	749.10	738.23	739.69	-0.46
720N	480W	1240.28	747.50	736.60	737.13	-0.53
720S	240W	1133.15	766.97	757.14	757.15	-0.01
660S	240W	1131.83	766.86	756.98	757.39	-0.40
600S	240W	1136.36	765.91	755.99	756.56	-0.57
540S	240W	1140.59	765.35	755.41	755.79	-0.38
480S	240W	1141.76	764.25	754.24	755.58	-1.34
420S	240W	1146.91	764.33	754.32	754.64	-0.32
360S	240W	1147.19	764.37	754.27	754.59	-0.31
300S	240W	1149.10	764.05	753.93	754.24	-0.26
240S	240W	1150.91	763.40	753.46	753.90	-0.44
180S	240W	1147.50	764.03	754.10	754.53	-0.43
120S	240W	1125.87	768.17	757.64	758.47	-0.83
60S	240W	1110.22	770.95	760.31	761.30	-0.99
60N	240W	1121.11	769.97	759.13	759.33	-0.20
120N	240W	1123.51	769.61	758.87	758.90	-0.03
180N	240W	1127.41	768.57	757.99	758.19	-0.20
240N	240W	1131.93	767.66	757.32	757.37	-0.05
300N	240W	1141.89	766.10	755.94	755.56	0.39
360N	240W	1157.29	763.22	753.11	752.73	0.38
420N	240W	1160.87	762.47	752.62	752.07	0.55
480N	240W	1183.96	758.34	748.26	747.80	0.46
540N	240W	1205.35	754.63	744.33	743.79	0.53
600N	240W	1217.44	752.50	742.01	741.51	0.50
660N	240W	1228.61	750.60	739.97	739.40	0.57
720N	240W	1240.28	748.37	737.65	737.17	0.47
720S	00W	1089.33	775.41	765.56	765.04	0.53
660S	00W	1085.54	776.11	766.24	765.71	0.53
600S	00W	1087.62	775.64	765.76	765.34	0.42
540S	00W	1090.17	774.86	765.00	764.89	0.11
480S	00W	1091.71	774.50	764.64	764.61	0.03
420S	00W	1093.47	774.22	764.33	764.30	0.03
360S	00W	1093.76	774.00	764.04	764.25	-0.21
300S	00W	1092.10	774.32	764.26	764.54	-0.28

240S	00W	1093.61	774.20	764.05	764.27	-0.22
180S	00W	1096.20	774.04	763.80	763.81	-0.01
120S	00W	1098.41	773.66	763.33	763.42	-0.09
60S	00W	1086.39	776.15	765.66	765.56	0.10
60N	00W	1088.90	775.56	765.12	765.11	0.01
120N	00W	1091.04	774.84	764.67	764.73	-0.06
180N	00W	1100.20	772.71	762.92	763.09	-0.18
240N	00W	1113.52	770.50	761.10	760.70	0.40
300N	00W	1144.03	764.81	755.62	755.16	0.46
360N	00W	1174.89	759.51	750.45	749.48	0.96
420N	00W	1191.32	756.85	747.51	746.42	1.09
480N	00W	1198.58	755.80	746.09	745.06	1.02
540N	00W	1213.30	753.19	743.31	742.30	1.01
600N	00W	1220.60	752.02	741.93	740.92	1.02
660N	00W	1230.57	750.14	739.91	739.03	0.88
720N	00W	1239.35	748.39	738.03	737.35	0.68
720S	240E	1043.12	783.08	773.72	773.18	0.55
660S	240E	1035.51	784.39	775.02	774.50	0.51
600S	240E	1033.45	784.59	774.95	774.86	0.10
540S	240E	1036.64	784.12	774.42	774.30	0.12
480S	240E	1038.81	783.53	773.80	773.93	-0.12
420S	240E	1038.98	783.40	773.61	773.90	-0.29
360S	240E	1041.07	783.17	773.28	773.54	-0.25
300S	240E	1041.82	783.07	773.10	773.41	-0.31
240S	240E	1043.64	782.77	772.74	773.09	-0.35
180S	240E	1040.39	783.38	773.34	773.65	-0.31
120S	240E	1044.52	782.71	772.69	772.93	-0.24
60S	240E	1059.92	780.24	770.35	770.24	0.11
60N	240E	1050.44	781.75	771.99	771.90	0.09
120N	240E	1056.77	780.33	770.71	770.79	-0.09
180N	240E	1063.76	778.34	769.05	769.56	-0.52
240N	240E	1076.84	776.26	767.37	767.26	0.11
300N	240E	1109.12	769.82	761.30	761.49	-0.20
360N	240E	1123.23	765.00	756.75	757.13	-0.38
420N	240E	1150.12	763.63	755.33	754.05	1.28
480N	240E	1166.91	761.12	752.74	750.96	1.79
540N	240E	1176.09	759.61	750.95	749.26	1.69
600N	240E	1185.53	758.21	749.30	747.51	1.79
660N	240E	1194.33	756.36	747.27	745.86	1.41
720N	240E	1204.38	754.68	745.36	743.98	1.38
720S	480E	996.55	791.05	781.93	781.20	0.72
660S	480E	992.50	791.33	782.06	781.89	0.17
600S	480E	986.82	792.27	783.14	782.85	0.29
540S	480E	982.32	792.69	783.83	783.61	0.21
480S	480E	981.67	792.69	784.12	783.72	0.40
420S	480E	983.97	792.00	783.68	783.33	0.34
360S	480E	989.77	790.79	782.47	782.35	0.12
300S	480E	997.43	789.45	781.04	781.05	-0.01
240S	480E	1007.22	787.95	779.23	779.38	-0.15
180S	480E	1011.48	786.99	778.23	778.65	-0.42
120S	480E	1018.76	785.83	776.83	777.40	-0.57
60S	480E	1019.34	785.80	776.86	777.21	-0.35
60N	480E	1024.63	785.03	776.13	776.38	-0.26
120N	480E	1025.33	784.80	776.04	776.26	-0.22
180N	480E	1024.23	784.85	776.50	776.45	0.05
240N	480E	1027.98	783.86	775.64	775.81	-0.16
300N	480E	1032.76	783.01	775.06	774.98	0.09
360N	480E	1038.08	781.85	774.26	774.06	0.21
420N	480E	1050.86	780.06	772.28	771.83	0.45
480N	480E	1070.51	777.13	768.86	768.37	0.49

540N	480F	1089.55	774.05	765.41	765.00	0.41
600N	480F	1104.95	771.65	762.86	762.24	0.62
660N	480F	1118.00	769.55	760.56	759.89	0.67
720N	480F	1133.54	766.99	757.69	757.08	0.61
720S	720F	972.28	794.81	785.88	785.31	0.57
660S	720F	968.19	795.22	787.12	785.99	1.13
600S	720F	984.72	791.69	784.31	783.21	1.10
540S	720F	1012.57	786.62	779.44	778.46	0.98
480S	720F	1043.31	781.08	774.10	773.15	0.95
420S	720F	1078.57	775.24	768.16	766.95	1.21
360S	720F	1108.44	770.18	762.86	761.62	1.24
300S	720F	1124.09	767.94	760.19	758.79	1.40
240S	720F	1133.18	766.34	759.11	757.14	1.97
180S	720F	1137.36	765.57	757.26	756.38	0.88
120S	720F	1135.41	766.17	757.76	756.74	1.02
60S	720F	1137.97	765.56	757.04	756.27	0.77
60N	720F	1131.84	766.69	758.44	757.39	1.05
120N	720F	1143.99	764.30	756.35	755.17	1.18
180N	720F	1138.64	765.52	757.29	756.15	1.15
240N	720F	1134.39	765.98	757.26	756.92	0.34
300N	720F	1119.78	768.17	759.52	759.57	-0.05
360N	720F	1105.90	771.19	762.25	762.07	0.18
420N	720F	1082.02	775.11	765.96	766.34	-0.38
480N	720F	1049.60	780.01	771.57	772.05	-0.48
540N	720F	1053.52	779.61	770.83	771.36	-0.48
600N	720F	1060.86	778.69	769.53	770.07	-0.54
660N	720F	1079.26	776.23	766.49	766.83	-0.34
720N	720F	1097.04	773.54	763.53	763.66	-0.13

EXECUTION TERMINATED 20:22:05

\$SIGNOFF



TO ACCOMPANY REPORT TITLED:
GRAVITY SURVEY
TAY 1 CLAIMS AREA
BY: C.A. AGER PhD, PEng.
DATED: SEPT. 1978 PROJECT: TAY 1

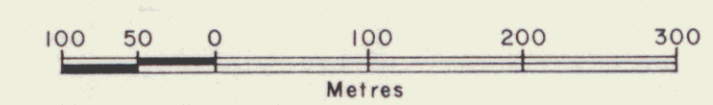
C.A. Ager

N.T.S. 105 K/5

AMAX MINERALS EXPLORATION
— FISHOOK CREEK AREA —
WHITEHORSE MINING DISTRICT, YUKON TERRITORY

ELEVATION MAP
CONTOUR INTERVAL: 20 METRES

C.A. AGER & ASSOC. SURREY B.C. CANADA	DWN. BY: T.M. CHK. BY: DATE: SEPT. 1978	FIG. NO. 3a
--	---	-----------------------



N.T.S. 105 K/12
AMAX MINERALS EXPLORATION
 —FISHOOK CREEK AREA—
 WHITEHORSE MINING DISTRICT, YUKON TERRITORY

ELEVATION MAP
 CONTOUR INTERVAL: 20 METRES

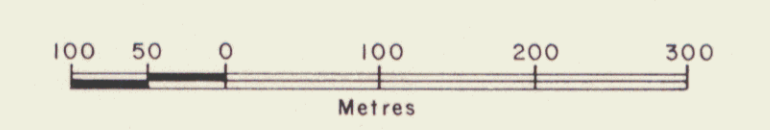
TO ACCOMPANY REPORT TITLED:
 GRAVITY SURVEY
 TAY 2 CLAIMS AREA
 BY: C.A. AGER, PH.D., P.Eng.
 DATED: SEPT. 1978 PROJECT: TAY 2

C.A. Ager

C.A. AGER & ASSOC. SURREY B.C. CANADA	DWN. BY: T.M. CHK. BY: DATE: SEPT. 1978	FIG. NO. 3b
--	---	-----------------------



Terrain Radius = 600 Metres
 $\rho = 2.80 \text{ g/cc (E.F. = 0.19128 Mg/M)}$



N.T.S. 105 K/5
AMAX MINERALS EXPLORATION
— FISHOOK CREEK AREA —
WHITEHORSE MINING DISTRICT, YUKON TERRITORY

COMPLETE BOUGUER
GRAVITY MAP
CONTOUR INTERVAL 0.25 MGAL

TO ACCOMPANY REPORT TITLED:
GRAVITY SURVEY
TAY 1 CLAIMS AREA
BY: C.A. AGER Ph.D., P.Eng.
DATED: SEPT. 1978 PROJECT: TAY 1

C.A. AGER & ASSOC. SURREY B.C. CANADA	DWN. BY: T.M. CHK. BY: DATE: SEPT. 1978	FIG. NO. 4a
--	---	-----------------------



Terrain Radius = 600 Metres
 $\rho = 2.80 \text{ g/cc (E.F. } \pm 0.19128 \text{ Mg/l/M)}$



N.T.S. 105 K/12

AMAX MINERALS EXPLORATION
—FISHOOK CREEK AREA—
WHITEHORSE MINING DISTRICT, YUKON TERRITORY

**COMPLETE BOUGUER
GRAVITY MAP**
CONTOUR INTERVAL : 0.25 MGAL

TO ACCOMPANY REPORT TITLED:
GRAVITY SURVEY
TAY 2 CLAIMS AREA
BY: C.A. AGER Ph.D., P.Eng.
DATED: SEPT. 1978 PROJECT: TAY 2

C.A. AGER & ASSOC. SURREY B.C. CANADA	DWN. BY: T.M. CHK BY: DATE: SEPT 1978	FIG. NO. 4b
--	---	-----------------------



N.T.S. 105 K/5
AMAX MINERALS EXPLORATION
 — FISHOOK CREEK AREA —
 WHITEHORSE MINING DISTRICT, YUKON TERRITORY

NON-LINEAR
BOUGUER GRAVITY MAP
 CONTOUR INTERVAL : 0.25 MGAL

TO ACCOMPANY REPORT TITLED:
 GRAVITY SURVEY
 TAY 1 CLAIMS AREA
 BY: C.A. AGER PhD, PEng.
 DATED: SEPT 1978 PROJECT: TAY 1

C.A. Ager

C.A. AGER & ASSOC. SURREY B.C. CANADA	DWN. BY: T.M. CHK. BY: DATE: SEPT. 1978	FIG. NO. 5a
--	---	-----------------------



N.T.S. 105 K/12
AMAX MINERALS EXPLORATION
 — FISHOOK CREEK AREA —
 WHITEHORSE MINING DISTRICT, YUKON TERRITORY

NON-LINEAR
BOUGUER GRAVITY MAP
 CONTOUR INTERVAL 0.25 MGAL

TO ACCOMPANY REPORT TITLED:
 GRAVITY SURVEY
 TAY 2 CLAIMS AREA
 BY: C.A. AGER PHD, P.Eng.
 DATED: SEPT. 1978 PROJECT: TAY 2

CA

C.A. AGER & ASSOC. SURREY B.C. CANADA	DWN. BY: T.M. CHK. BY: DATE: SEPT. 1978	FIG. NO. 5b
--	---	----------------



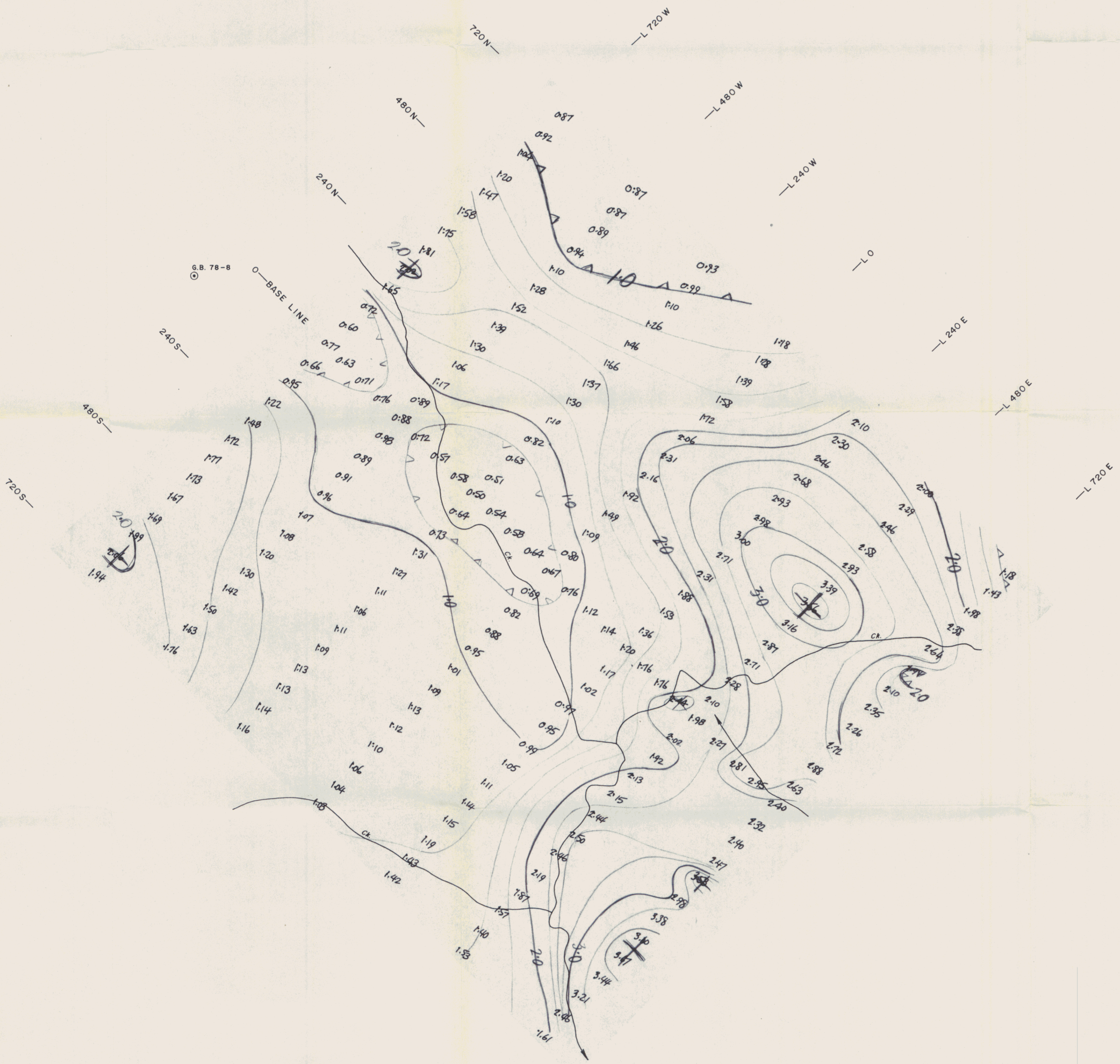
N.T.S. 105 K/5
AMAX MINERALS EXPLORATION
 — FISHOOK CREEK AREA —
 WHITEHORSE MINING DISTRICT, YUKON TERRITORY

TERRAIN EFFECT MAP
 CONTOUR INTERVAL: 0.25 MGAL

TO ACCOMPANY REPORT TITLED:
 GRAVITY SURVEY
 TAY 1 CLAIMS AREA
 BY: C.A. AGER PH.D., P.ENG.
 DATED: SEPT. 1978 PROJECT: TAY 1

[Handwritten signature]

C.A. AGER & ASSOC. SURREY B.C. CANADA	DWN. BY: T.M. CHK. BY: DATE: SEPT. 1978	FIG. NO. 6a
--	---	-----------------------



N.T.S. 105 K/12
AMAX MINERALS EXPLORATION
 —FISHOOK CREEK AREA—
 WHITEHORSE MINING DISTRICT, YUKON TERRITORY

TERRAIN EFFECT MAP
 CONTOUR INTERVAL : 0.25 MGAL

TO ACCOMPANY REPORT TITLED:
 GRAVITY SURVEY
 TAY 2 CLAIMS AREA
 BY: C.A. AGER PH.D., P.ENG.
 DATED: SEPT. 1978 PROJECT: TAY 2

Chy

C.A. AGER & ASSOC. SURREY B.C. CANADA	DWN. BY: T.M. CHK. BY: DATE: SEPT. 1978	FIG. NO. 6b
--	---	-----------------------