

ASSESSMENT REPORT

FOR THE

PL 1-28 CLAIMS

YA5104 - YA5131

LOCATED IN THE

DAWSON MINING DISTRICT

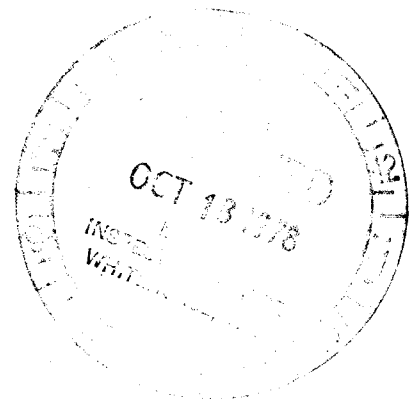
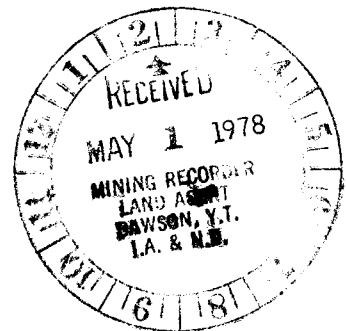
NTS: 116 F 7

BY

C. N. FORSTER, GEOLOGIST

FOR

UNION CARBIDE CANADA LTD.



090374

This report has been examined by the  
Geological Evaluation Unit and is hereby  
granted to the applicant in accordance  
with the provisions of the Mining Act.

2892.00

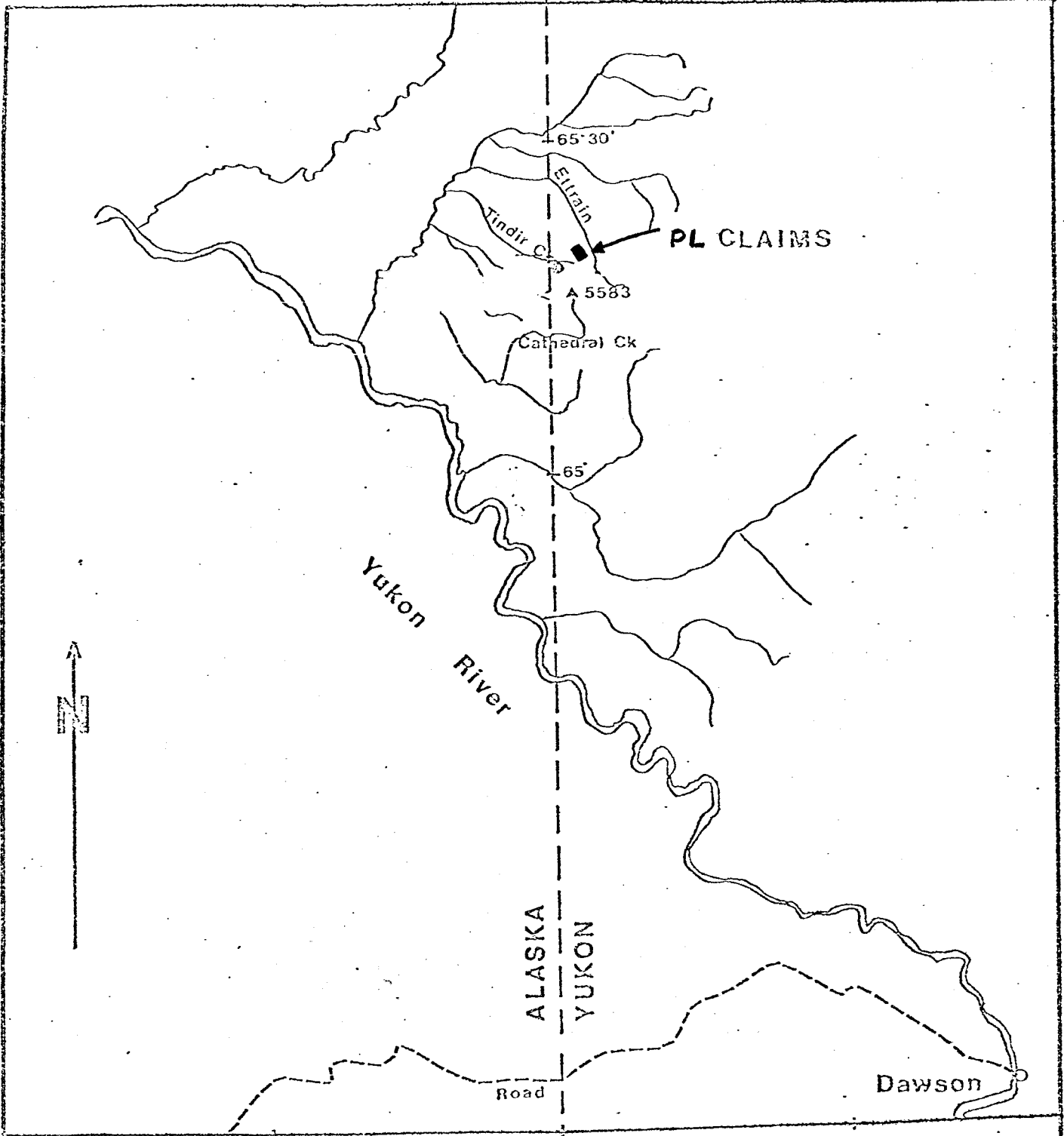
*[Handwritten Signature]*

Can be used for mining purposes under  
the provisions of the Mining Act.

*[Handwritten Signature]*

B. R. BAXTER  
Supervising Mining Recorder

Commissioner of Mines



LOCATION MAP-TINDIR AREA

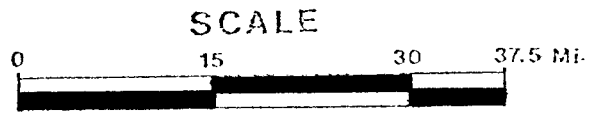
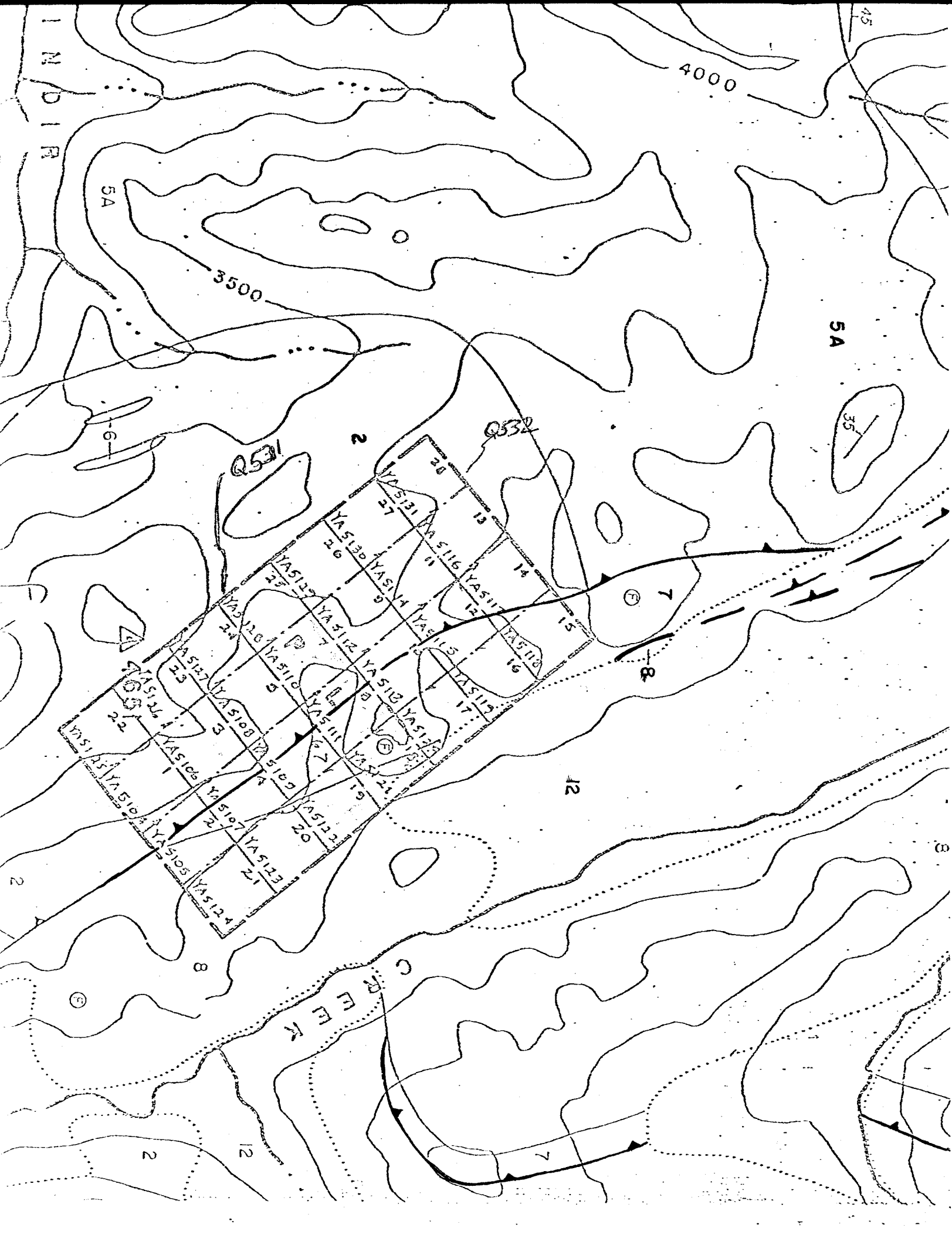


FIG 1



## INTRODUCTION

The twenty-eight PL claims, YA5104-YA5131, were staked and recorded by B.P. Minerals in 1976 to claim a stream silt and soil Pb-Zn geochemical anomaly. Subsequent soil sampling delineated a long narrow Pb-Zn-Ag geochemical anomaly approximately 5000 feet in length. Lack of outcrop and a tight time schedule prevented B.P. Minerals from fully evaluating the significance of the discovery.

In 1977 the claims were transferred to Union Carbide Canada Ltd., as part of a Joint Venture Agreement for evaluation.

The following report by T. Liverton, Staff Geologist, describes the work he and his assistant E. Rehtlane of Vancouver, performed for Union Carbide.

## LOCATION AND ACCESS

The PL claims are located in the Dawson Mining District on claim sheet 116 F 7 approximately 95 miles north west of Dawson City. Near co-ordinates  $65^{\circ} 15' N$ ;  $140^{\circ} 54' W$ , the claims lie to the west of Ettrain Creek and three miles east of the Yukon-Alaska Boundary.

## EXPLORATION WORK COMPLETED BY UNION CARBIDE IN 1977

### P. L. Claims

Five days were spent on the P.L. claims by T. Liverton and an assistant. Work consisted of a geological examination of the claims with hand pitting in geochemically anomalous areas of poor exposure to obtain an idea of the type of mineralization present. A few chip samples were taken of outcrop material, some being picked "specimens" and others randomly chipped from outcrop to determine local lead and zinc content of the carbonates.

The geology as presented in the 1976 report by B.P. Minerals is quite accurately shown on the scale of 1" to 400 feet. The fault bounding the Tindir Group and Carbonates to the east is well defined by a sharp discontinuity in dip on either side. Similar sub-parallel faults are evident along Ettrain Creek and between the claim block and Tindir Creek.

Faulting has fractured the carbonates (dolomite near the fault) up to several hundred feet (60 meters) to the North-East of the fault. Fracturing has broken the dolomite into small blocks of a few centimeters dimensions with traces of both sphalerite and galena along separate fracture planes.

#### Results of the 1977 Work

##### 1. 60N Line (around 15E)

The region of anomalous Pb, Zn values obtained during the 1976 work is obscured by scree on the flank and soil on the top of the small ridge. Five shallow pits (1 meter deep by ½ meter section) were dug down to the "C" horizon and the rock fragments were sampled. Pits were spaced 5-10 meters apart and located over the rough position of the geochemical anomaly shown in B.P.'s 1976 Fall report.

Specimens from the pits showed galena and sphalerite mineralization as fracture fillings of a couple of millimeters width. One sample gave 17,200 ppm lead but only 198 zinc.

The dolomite hill to the East between 17 and 25E has no out-cropping mineralization.

##### 2. Main Showing Ridge - 38 N, SE

Exposure is good around the anomalous region. Traces of galena were seen in tiny (less than 1 mm wide) fractures, but no continuity of mineralization was noted. One sample (a picked "specimen") assayed 2.55% zinc and 450 ppm Pb. Random chip samples off the outcrop analyzed up to 189 ppm Pb. and 117 ppm Zn.

##### 3. Hoodoos Showing - 30 N, 1 E

The intensely fractured outcrops, referred to as the "Hoodoo" showing by B.P. have traces of galena and possible very fine sphalerite along the fractures. One selected specimen returned a value of 8400 ppm lead and 320 ppm zinc. This represents the best mineralization observed in outcrop.

##### 4. Area 15 N, 1 E

Here the dolomite exposed in the gully, shows much fracturing and iron-staining but contains no visible galena or sphalerite.

5. B. L. Showing 00 N 00 E (and to east)

At this locality exposure is mostly continuous along the crest of the spur. Galena was seen at a pit on the base line and about 250 feet to the east. Fracturing is ubiquitous and what little mineralization was seen occurred in tiny (millimeter-wide) fractures.

A line of samples was taken down the spur (see detailed sketch). Each sample of rock chips represents an area of up to 10 m<sup>2</sup> around the plotted point. The purpose was to check for disseminated mineralization. Values ranged up to 550 ppm lead and 248 ppm zinc.

6. Spur around 13 S

No mineralization was seen in outcrop in the vicinity of the 1976 geochemical anomaly, but exposure is somewhat limited close to the fault. There is sufficient outcrop, however, to suggest that no reasonable width of mineralization occurs here.

Discussion

Sufficient exposure occurs around the geochemical anomalies to obtain an idea of the type of mineralization present. The soil over the dolomite is such that soil samples contain mostly fine rock fragments and I would imagine that soil analysis might approximate values in the rock.

Conclusions

There is a zone of very weak mineralization running parallel to the fault bounding the Tindir Quartzites and Palaeozoic carbonates. Although it is visible at the surface for a length of 6000 feet, individual occurrences of zinc and lead are sporadic. Over widths of two or three meters lead and zinc values run only a few hundred parts per million.

Recommendation

There is little potential for increase in grade with depth: the area is little more than a geochemical curiosity and subsurface investigations are not warranted at this time. No work is proposed on the PL claims for 1978.

To: Union Carbide Corp.

REPORT No A27 - 511

PAGE No. 1

BONDAR-CLEGG & COMPANY LTD.

DATE: August 16, 1977

404 - 1112 West Pender Street  
Vancouver, B.C.  
V6E 2S1

Samples submitted: August 10, 1977  
Results completed: August 16, 1977

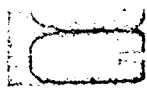
CERTIFICATE OF ASSAY

I hereby certify that the following are the results of assays made by us upon the herein described TINDIR 241p samples.

MARKED	GOLD		SILVER	Zn							TOTAL VALUE PER TON (2000 LBS.)
	Ounces per Ton	Value per Ton	Ounces per Ton	Percent	Percent	Percent	Percent	Percent	Percent		
Main Showing				2.55							

By T. Liverton

Registered Assayer, Province of British Columbia



## Geochemical Lab Report 1

Extraction Hot Aqua Regia Report No. 27 - 777  
 Method Atomic Absorption From Union Carbide Corp.  
 Fraction Used P.L. CLAIMS Date T. LIVERTON August 3, 1968

SAMPLE NO.	Pb ppm	Zn ppm	Ag ppm	SAMPLE NO.	Pb ppm	Zn ppm	Ag ppm
7E 1R Rocks	12	140	0.2	7E 31R	13	37	0.2
2R	16	68	0.2	32R	6	54	0.2
3R	8	69	0.2	33R	20	66	0.2
4R	14	115	0.2	34R	< 2	25	0.2
5R	12	114	0.2	35R	20	34	0.2
6R	11	136	0.2	36R	5	63	0.2
7R	20	92	0.2	37R	26	46	0.2
8R	26	248	0.2	39R	17200	198	2.6
9R	30	73	0.2	40R	440	82	0.2
10R	25	63	0.2	41R	330	53	0.2
11R	17	83	0.2	42R	71	30	0.2
12R	30	105	0.2	43R	79	29	0.2
13R	NS	NS	NS	44R	30	32	0.2
14R	39	72	0.2	45R	31	80	0.2
15R	17	52	0.2	46R	48	61	0.2
16R	26	43	0.2	47R	139	117	0.2
17R	22	115	0.2	52R	110	53	0.2
18R	8	33	0.2	53R	550	152	0.2
19R	16	50	0.2	54R	17	20	0.2
20R	10	23	0.2	55R	23	40	0.2
21R	37	84	0.2	56R	30	14	0.2
22R	9	36	0.2	57R	< 2	49	0.2
23R	8	43	0.2	58R	10	36	0.2
24R	16	44	0.2	59R	< 2	22	0.2
25R	23	71	0.2	Hoodoo Showing	6400	320	4.4
26R	32	62	0.2	"Main" Showing	450	>20000	2.0
27R	24	36	0.2	400' grid E of Main Showing	62	750	0.2
28R	8	32	0.2				
29R	11	52	0.2				
30R	22	54	0.2				

cc Mr. T. Liverton

NS denotes 'no sample'



**GEOCHEMICAL RESULTS**

Sample #	Pb	Zn	Ag
7E-39	17200	190	2.6
40	440	82	0.2
41	330	53	0.2
42	71	30	0.2
43	79	29	0.2

**GEOCHEMICAL RESULTS**

Sample #	Pb	Zn	Ag
7E-44R	30	32	0.2
45R	31	80	0.2
46R	48	61	0.2
47R	189	117	0.2
HOODOO SHOWING	8400	320	4.4
MAIN SHOWING	450	20000	2.8

**GEOCHEMICAL LEGEND**

PPM ZINC

- >109
- 109 - 263
- 264 - 633
- 634 - 1260
- <1260

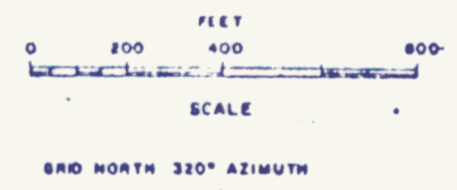
**LEGEND**

- T PRECAMBRIAN  
Tender Quartzite
- D DEVONIAN  
Limestone and Dolomite
- ▲ THRUST CONTACT
- FOSSIL LOCALITY
- AREA OF OUTCROP
- Lst Limestone
- Dol Dolomite
- Stl Stratal Siltification
- Sh Shale
- Sph Sphalerite
- Gal Galena
- Stm Stream Sediment
- CP Claim Post
- PH Locality
- Away and Rock Sample

**NOTE: 1977 SAMPLING**  
**ADDED - T. LIVERTON**

BP Minerals Limited  
**PL PROPERTY**  
GEOLOGY AND GEOCHEMISTRY  
ZINC IN SOIL AND STREAM SEDIMENT

SCALE: 1" = 400 FEET  
DATE: OCT 1978  
PROJ. 510



890 NORTH 320° AZIMUTH

**FIG 3**