



This report has been examined by the Geological Evaluation Unit and is recommended to the Commission to be considered as representation work in the amount of \$ 84,000.00

[Signature]
per _____
Supervising Mining Recorder

Consisted of representation work under Section 33 of the Quartz Mining Act.

[Signature]
B. R. BAXTER
Supervising Mining Recorder
per _____
Commissioner of Yukon Territory



Sept. 1978

LaTEKO RESOURCES Ltd.

NEIL & FOX CLAIMS

WATSON LAKE M.D., Y.T.
Lat. $61^{\circ} 17' N$ Long. $127^{\circ} 03' W$

Geophysical Report

090372
by V. CUKOR, P. ENG. ● NVC ENGINEERING LTD. ● VANCOUVER, B.C.

TABLE OF CONTENTS

	PAGE NO.
1. INTRODUCTION	
2. SUMMARY	
2.1 REVIEW	1 & 2
2.2 CONCLUSIONS AND RECOMMENDATIONS	2 & 3
3. PROPERTY	
3.1 CLAIMS	4
3.2 LOCATION	4
3.3 ACCESS	4 & 5
4. GEOLOGY	6
5. GEOCHEMISTRY	7
6. GEOPHYSICS	
6.1 ELECTROMAGNETIC SURVEY	8 & 9
6.2 MAGNETOMETER SURVEY	9 & 10

APPENDIX A

~~LIST OF PERSONNEL EMPLOYED AND COSTS
INCURRED ON THE FOX-NEIL GROUP PROJECT,
JULY 1978~~

APPENDIX B

CERTIFICATES OF ASSAYS

ILLUSTRATIONS

	<u>Scale</u>
Fig 1 LOCATION MAP	
Fig 2 CLAIM MAP	1:30,000
Fig 3 GEOLOGY AND SURVEY PLAN	
Fig 4 MAIN GRID - ELECTROMAGNETIC SURVEY V.L.F. 18.6 & 23.4	1:2,500
Fig 5 MAIN GRID - ELECTROMAGNETIC SURVEY V.L.F. 17.8	1:2,500
Fig 6 MAIN GRID - MAGNETOMETER SURVEY	1:2,500
Fig 7 SOUTH GRID - ELECTROMAGNETIC SURVEY V.L.F. 18.6 & 23.4	1:2,500
Fig 8 SOUTH GRID - ELECTROMAGNETIC SURVEY V.L.F. 17.8	1:2,500
Fig 9 SOUTH GRID - MAGNETOMETER SURVEY	1:2,500

LaTEKO RESOURCES LTD.

NEIL - FOX CLAIMS

WATSON LAKE M.D., Y.T.

1. INTRODUCTION

A field program consisting of prospecting, geochemical soil reconnaissance, geophysical ground electromagnetic and magnetic surveys was conducted from July 7 to July 23, 1978, under the supervision of V. Cukor, P.Eng.

Geophysical surveys were performed by Presunka Geophysical Explorations Ltd. with operators S. Presunka and P. Presunka. All readings were taken on two grids, along 200 metre flagged lines at 25 metre centres.

Prospecting, geochemical soil sampling and some detailed geological mapping was performed by the author, with the help of M. Lutz, prospector.

Watson Lake Flying Services Ltd. and Frontier Helicopters Ltd., both stationed in Watson Lake, Y.T., were employed to mobilize and demobilize camp, equipment and crew to and from the property.

2. SUMMARY

2.1 REVIEW

Geology of the NEIL-FOX property was described in detail in the report by the author, dated July 1977. The property is underlain by a sedimentary sequence, consisting of a carbonate unit in the lower part and a clastic unit in its upper part.

An abundance of argentiferous galena and copper float is found on the property, and a number of mineral showings were located and sampled in the past. Detailed descriptions of the showings and assay results were previously reported by P.H. Sevensma, P. Eng., and the author.

A magnetic anomaly was outlined by the 1968 airborne survey and was interpreted to indicate an underlain intrusive body, or a body of massive sulfides. The main objective of this year's ground magnetic survey was to pinpoint this anomaly and assist in selecting the drill targets. However, although the survey revealed some magnetic relief, it failed to record any anomalous readings in the area with outlined airborne anomaly.

An E.M.-16 survey was conducted over the entire grid with a detailed survey performed in the vicinity of mineral showings. Several weak conductive zones were encountered by these surveys, all of which were explained easily as fault or shear zones, and as topographic anomalies. In the showing areas, no electromagnetic response

2.1 SUMMARY (cont'd)

was received from the sulfide mineralization, although conductivity tests on the individual samples gave positive results.

A limited radiometric survey was performed along two traverses in the clastic area, on 20 metre stations. A Scintrex spectrometer was used to record readings of the total count, K, U, and Th. Three rock samples were selected in the locations where the total count exceeded 300 counts per second, but chemical analysis registered only traces of uranium oxide.

Visual prospecting of the areas outside of the known mineralized structure has not revealed any new zones of interest, and practically all values from geochemical reconnaissance remained in the background limits.

2.2 CONCLUSIONS AND RECOMMENDATIONS

The NEIL-FOX property contains numerous attractive mineral showings, and a widespread copper and/or silver-lead float was encountered in the dolomitic rock unit over the length of over two miles. This year's prospecting and geochemical soil reconnaissance failed to locate any additional areas of interest in the similar rock units in the vicinity of the property.

The ground magnetic survey left practically only one possible explanation for the existence of the 1968

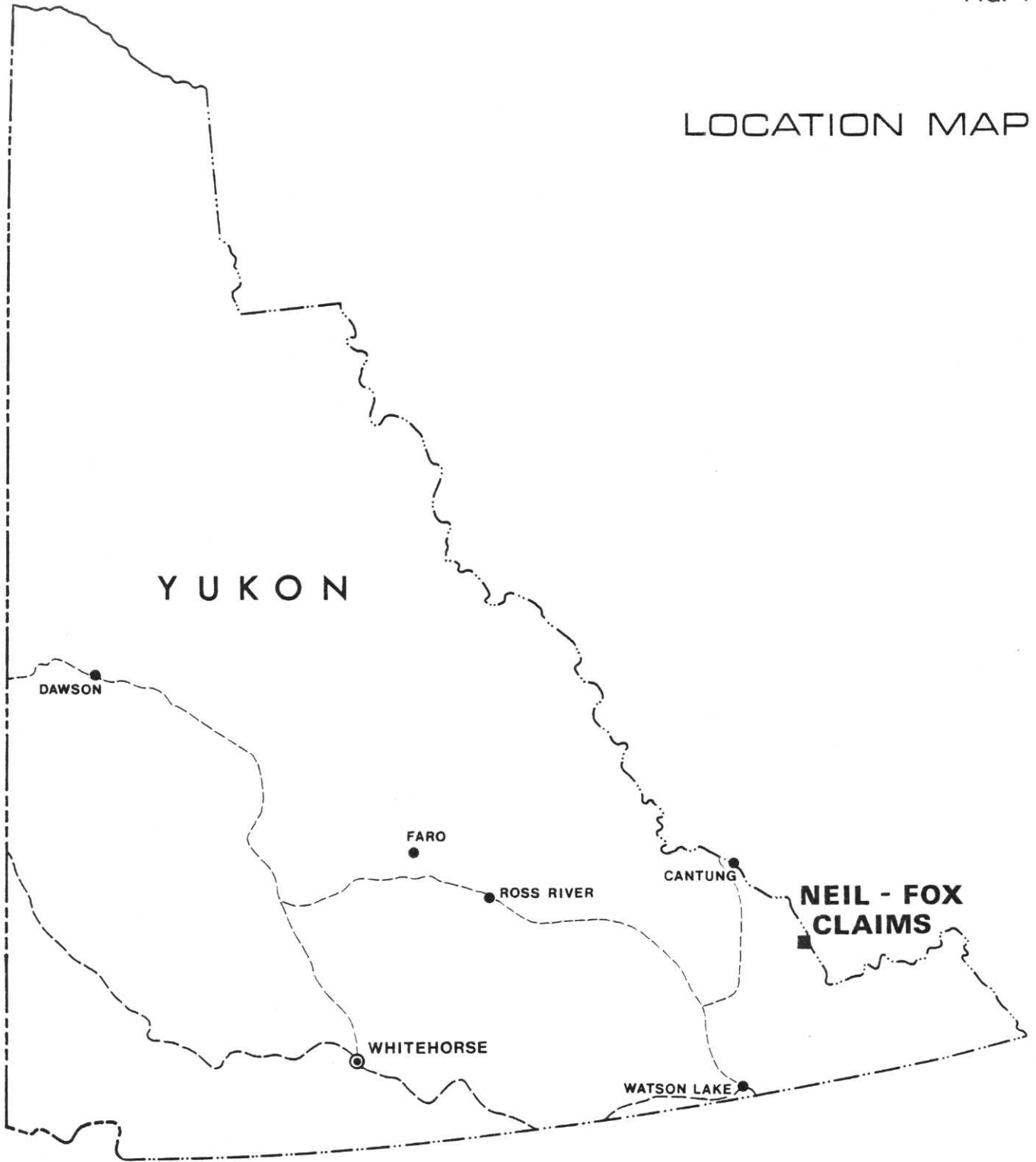
2.2 CONCLUSIONS AND RECOMMENDATIONS (cont'd)

airborne anomaly, i.e., a magnetic high most likely reflects a topographic feature.

The E.M.-16 survey completely failed to respond in any of the showing areas, although conductivity tests of the average samples selected from showings or mineralized talus gave positive results. The most logical conclusion follows, that showings are small isolated pods, rather than extensive mineral zones.

This year's attempt to establish promising exploration drill targets did not succeed. Because of negative results and also remoteness of the property, the author cannot, at this time, recommend proceeding with the exploration by the means of diamond drilling. However, a frequency and extent of mineral showings still makes the property an interesting prospect. Therefore it is recommended to file assessment work on the property, reassess and study all results of the exploration completed so far and then make a decision on the next course of action. As for now, the most logical step seems to be to try to employ some deep penetrating geophysical method in order to obtain indications of some deep-laying massive sulfide bodies.

LOCATION MAP



3. PROPERTY

3.1 CLAIMS

The NEIL-FOX group consists of 30 full-size mineral claims, with record numbers and dates as follows:

Claim	Record No.	Recording date
NEIL 1 - 8 (incl)	YA 34 - 40	June 25
FOX 1 - 16 (incl)	YA 11824 - 39	November 12
NEIL 10 - 15 (incl)	YA 21531 - 36	

All claims are fully owned by the LaTeko Resources Ltd. of Vancouver, B.C.

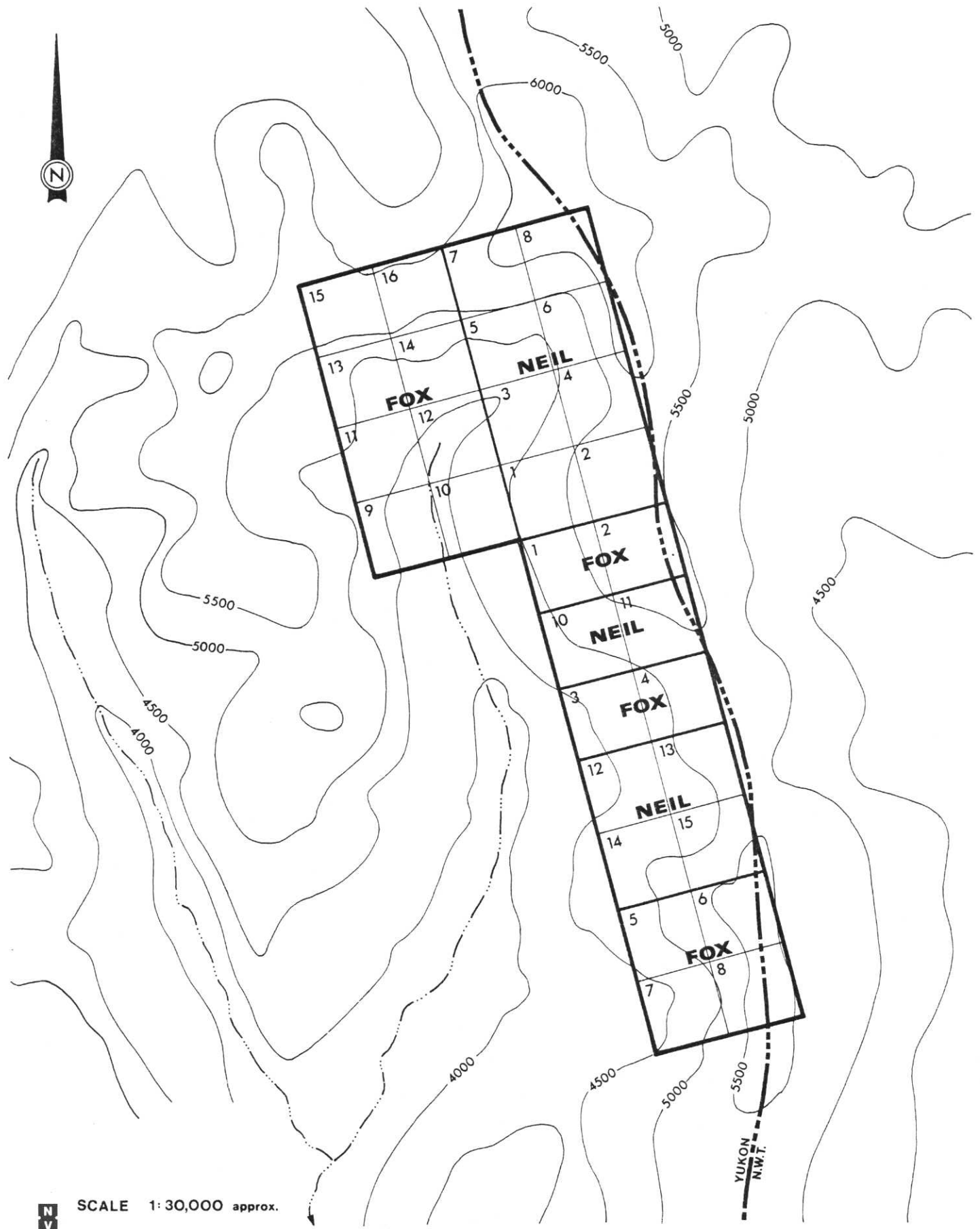
3.2 LOCATION

The property is located approximately 100 air miles north-northeast from Watson Lake, Y.T., and only 3 miles north of Twin Lakes, and it lies along the Yukon and Northwest Territories' border (see figs. 1 and 2). It is on the N.T.S. 95-E-6 map, in the Watson Lake M.D., and at approximately a northern latitude of $61^{\circ}17'$ and at a western longitude of $127^{\circ}03'$. The property elevation is from 1,200 to 1,750 metres above sea level.

3.3 ACCESS

The NEIL-FOX property is accessible by aircraft only. A float-equipped fixed-wing aircraft can safely land on the northern lake of Twin Lakes, from where supplies

CLAIM MAP



SCALE 1:30,000 approx.

3.3 ACCESS (cont'd)

can be flown by helicopter to the property. The nearest suppliers' base is Watson Lake.

4. GEOLOGY

A general geology of the Twin Lakes region is shown on the 4-mile G.S.C. map, Flat River, 35 - 1964, and descriptions of geological units are found in paper 64-52 by H. Gabrielse, J.A. Roddick, and S.L. Blussom.

During a 1977 program, the author performed detailed geological mapping of the claim area at a scale of 1:10,000. The results of this work, with full description of mineral showings, were reported in the July 1977 report. Fig. 3, appended in the pocket of this report, shows the geological units, mineral showings (this year's located occurrences remained unnumbered), and grid lines established for the geophysical surveys.

A number of new showings were located this year. The most impressive one was at the north end of the property, where widespread copper and galena float and some mineralization in place were encountered in fractured and silicified dolomite. In two localities, copper float was also found in the clastics which might be a very significant discovery.

5. GEOCHEMISTRY

A limited geochemical soil reconnaissance was performed in the areas east and west of the mineral bearing carbonate structure. The sample locations are shown on fig. 3, and Certificates of Assays are appended to the report as Appendix B. The samples were collected along the contour lines at approximately 100 metre spacing. The program was designed as a part of the prospecting of the favourable carbonate unit for additional, yet uncovered mineralization. As a part of the program, talus slopes were carefully examined and in the places where an overburden cover hampered talus examination geochemical reconnaissance was performed.

The total of 73 soil samples were collected, preferably from the "B" horizon. All samples were packed up in standard paper envelopes and dried up in camp. General Testing Laboratories Ltd. of Vancouver, B.C., performed the assaying of the -80 mesh fraction for copper, lead, and zinc. The method of assaying used was atomic absorption.

As it is apparent from the assay certificates, all assay values for copper, lead, and zinc remained in the background area, except for the sample 17 N at the east slope which assayed 180 ppm lead. Neither the talus examination nor geochemical reconnaissance encountered any traces of additional mineralization outside of the already known area.

6. GEOPHYSICS

6.1 ELECTROMAGNETIC SURVEY

Instrument Ronka E.M.-16, Serial No. 2, operated by S. Presunka, was used to explore conductivity of the grid areas. Two grids were constructed for this survey: the main grid and the south grid, with 200 metre lines and 25 metre stations. Compass and belt chain were used to establish the station locations, which were then marked by the orange flagging tied to the bushes or rocks. All values were plotted on the 1:2,500 plans, appended to the report as figures 4, 5, 7, and 8.

The signals from two V.L.F. Stations were used for surveys on every location: V.L.F. Station 17.8 Maine and alternating V.L.F. Station 18.6 Seattle and Station 23.4 Hawaii, which had been constantly switching on and off the air for the duration of the survey. The crossovers (conductive zones) were clearly marked in the field, by the orange flagging, tied in cross fashion.

As apparent from the enclosed plans, a number of weak conductors were encountered in the various parts of the grids. The most prominent one appears on fig. 5, trending about north-south, following the mountain ridge. It is obvious that the crossover represents a "topographic anomaly" caused by a relatively conductive clastic unit forming the mountain top. The rest of the conductors,

6.1 ELECTROMAGNETIC SURVEY (cont'd)

shown on figures 4, 6, and 7 reflect fault and shear zones (some of which were previously noticed during geological mapping), rather than accumulation of sulfide minerals.

A special attention was given to the showing areas where a detailed survey was conducted on the closely spaced lines. Nevertheless, no electromagnetic response was encountered in any of these localities. This lack of response to the electromagnetic survey indicates, in the author's opinion, that mineral showings are most probably smaller isolated occurrences rather than connected mineral zones.

6.2 MAGNETOMETER SURVEY

Instrument M.F. 1 Fluxgate, Serial No. 905454 was operated by P. Presunka. The magnetometer was adjusted to read 500 gammas for background. Base stations were established along the baseline for diurnal control.

The main objective of this magnetic survey was to pinpoint the magnetic high anomaly outlined by an airborne survey, performed in 1968 by Siegel Associates Ltd. P.H. Sevensma, P. Eng., in his report of January 1977, interpreted this anomaly as an indication of a deeper intrusive body with possible massive sulfide bodies.

6.2 MAGNETOMETER SURVEY (cont'd)

Silver-lead and copper showings would represent a leakage halo controlled by bedding and/or fracture systems. However, the shape and position of the anomaly, as outlined by the survey, suspiciously closely follows the mountain ridge with the possible explanation that magnetic relief reflected topographic features. Before planning an expensive drill program, the exact location, extent and a better definition of the magnetic anomaly had to be established.

After the ground survey was completed, all values were plotted on 1:2,500 maps (see figures 6 and 9) and contoured at 100 gammas. On the main grid (fig. 6) a magnetic high anomaly is outlined west of the baseline, starting at line 6 N and extending northward, more or less following the baseline. As this is also a general strike of the geological structure, high magnetic readings probably show the part of the clastic unit with a higher magnetite content. However, the readings in the area of the airborne anomaly remained mostly in the background level and showed a very low magnetic relief. This probably means that the airborne magnetic survey picked up topographic relief instead of magnetic anomalies.

Respectfully submitted



V. Cukor, P.Eng.

N.V.C. ENGINEERING LTD.

APPENDIX B

CERTIFICATES OF ASSAYS



GENERAL TESTING LABORATORIES

DIVISION SUPERINTENDENCE COMPANY (CANADA) LTD.

1001 EAST PENDER ST., VANCOUVER, B.C., CANADA, V6A 1W2
 PHONE (604) 254-1647 TELEX 04-507514 CABLE SUPERVISE

TO:
LATEKO RESOURCES LTD.
 433 - 355 Burrard Street
 Vancouver, B.C.
 V6C 2G8

 Attn: Mr. Billingsley

CERTIFICATE OF ASSAY

No.: **7807-2654 A** DATE: **Aug. 2/78**

We hereby certify that the following are the results of assays on: **Soil samples**

MARKED	GOLD	SILVER	Copper	Lead	Zinc	XXX	X X	XX
			Cu (ppm)	Pb (ppm)	Zn (ppm)			
<u>W. Slope:</u>								
1-N			39	38	124			
2-N			36	43	105			
3-N			34	45	95			
4-N			28	32	87			
5-N			32	38	88			
6-N			29	30	91			
7-N			29	60	92			
8-N			20	32	78			
9-N			19	36	62			
10-N			24	34	80			
11-N			23	43	71			
12-N			26	38	74			
13-N			28	49	105			
14-N			20	32	57			
15-N			15	28	50			
16-N			17	26	48			
17-N			18	28	52			
18-N			21	40	73			
19-N			31	43	78			
20-N			35	45	92			
21-N			34	51	75			
22-N			19	30	70			
23-N			24	34	76			
24-N			27	34	75			
25-N			35	49	82			
26-N			24	36	76			
27-N			17	32	64			
28-N			22	43	66			
29-N			29	47	96			
30-N			32	43	103			
31-N			34	40	86			
32-N			39	43	93			
33-N			34	40	77			

/ Continued on next page

NOTE: REJECTS RETAINED ONE MONTH. PULPS RETAINED THREE MONTHS. ON REQUEST PULPS AND REJECTS WILL BE STORED FOR A MAXIMUM OF ONE YEAR.

ALL REPORTS ARE THE CONFIDENTIAL PROPERTY OF CLIENTS. PUBLICATION OF STATEMENTS, CONCLUSION OR EXTRACTS FROM OR REGARDING OUR REPORTS IS NOT PERMITTED WITHOUT OUR WRITTEN APPROVAL. ANY LIABILITY ATTACHED THERETO IS LIMITED TO THE FEE CHARGED.

L. Wong
 L. WONG

PROVINCIAL ASSAYER

COPY

Analytical and Consulting Chemists, Bulk Cargo Specialists, Surveyors, Inspectors, Samplers, Weighers

MEMBER American Society For Testing Materials • The American Oil Chemists' Society • Canadian Testing Association
 REFEREE AND OR OFFICIAL CHEMISTS FOR: National Institute Of Oilseed Products • The American Oil Chemists' Society
 OFFICIAL WEIGHMASTERS FOR: Vancouver Board Of Trade



GENERAL TESTING LABORATORIES

DIVISION SUPERINTENDENCE COMPANY (CANADA) LTD.

1001 EAST PENDER ST., VANCOUVER, B.C., CANADA, V6A 1W2
 PHONE (604) 254-1647 TELEX 04-507514 CABLE SUPERVISE

TO: LATEKO RESOURCES LTD.
 433 - 355 Burrard Street
 Vancouver, B.C.
 V6C 2G8

(Continued) ... page 2

CERTIFICATE OF ASSAY

No.: 7807-2654 A DATE: Aug. 2/78

We hereby certify that the following are the results of assays on: **Soil samples**

MARKED	GOLD & SILVER		Copper	Lead	Zinc	XXX	XXX	XXX
			Cu (ppm)	Pb (ppm)	Zn (ppm)			
<u>E. Slope:</u> 1-N			18	34	64			
2-N			24	34	94			
3-N			33	40	102			
4-N			35	39	84			
5-N			25	40	85			
6-N			34	52	106			
7-N			27	36	92			
8-N			34	36	160			
9-N			18	36	84			
10-N			32	38	89			
11-N			36	44	98			
12-N			70	46	137			
13-N			28	36	72			
14-N			45	48	92			
15-N			20	36	74			
16-N			10	25	42			
17-N			18	180	65			
18-N			20	38	66			
19-N			32	43	112			
20-N			27	38	71			
21-N			34	39	105			
22-N			13	21	74			
23-N			25	33	118			
24-N			18	52	92			
25-N			18	43	145			
26-N			21	28	95			
27-N			35	57	134			
28-N			38	55	101			
29-N			59	69	110			
30-N			39	35	74			
31-N			22	33	71			
32-N			27	48	79			
33-N			30	45	84			
34-N			40	45	81			
35-N			32	38	73			
36-N			26	33	56			

Continued on page 3

NOTE: REJECTS RETAINED ONE MONTH. PULPS RETAINED THREE MONTHS. ON REQUEST PULPS AND REJECTS WILL BE STORED FOR A MAXIMUM OF ONE YEAR.

ALL REPORTS ARE THE CONFIDENTIAL PROPERTY OF CLIENTS. PUBLICATION OF STATEMENTS, CONCLUSION OR EXTRACTS FROM OR REGARDING OUR REPORTS IS NOT PERMITTED WITHOUT OUR WRITTEN APPROVAL. ANY LIABILITY ATTACHED THERETO IS LIMITED TO THE FEE CHARGED.

L. WONG

PROVINCIAL ASSAYER

COPY

Analytical and Consulting Chemists, Bulk Cargo Specialists, Surveyors, Inspectors, Samplers, Weighers

MEMBER: American Society For Testing Materials • The American Oil Chemists' Society • Canadian Testing Association
 REFEREE AND OR OFFICIAL CHEMISTS FOR: National Institute Of Oilseed Products • The American Oil Chemists' Society
 OFFICIAL WEIGHMASTERS FOR: Vancouver Board Of Trade



GENERAL TESTING LABORATORIES

DIVISION SUPERINTENDENCE COMPANY (CANADA) LTD.

1001 EAST PENDER ST., VANCOUVER, B.C., CANADA, V6A 1W2
 PHONE (604) 254-1647 TELEX 04-507514 CABLE SUPERVISE

TO: **LATEKO RESOURCES LTD.**

(Continued) ... page 3 ...

CERTIFICATE OF ASSAY

No.: **7807-2654 A** DATE: **Aug. 2/78**

We hereby certify that the following are the results of assays on: **Soil samples**

MARKED	GOLD SILVER		Copper	Lead	Zinc	XXX	XXX	XXXX
			Cu (ppm)	Pb (ppm)	Zn (ppm)			
<u>E. Slope:</u>								
37-N			37	45	84			
38-N			38	45	92			
39-N			31	44	87			
40-N			37	40	85			

cc. Mr. V. Cukor

NOTE: REJECTS RETAINED ONE MONTH. PULPS RETAINED THREE MONTHS. ON REQUEST PULPS AND REJECTS WILL BE STORED FOR A MAXIMUM OF ONE YEAR.

ALL REPORTS ARE THE CONFIDENTIAL PROPERTY OF CLIENTS. PUBLICATION OF STATEMENTS, CONCLUSION OR EXTRACTS FROM OR REGARDING OUR REPORTS IS NOT PERMITTED WITHOUT OUR WRITTEN APPROVAL. ANY LIABILITY ATTACHED THERETO IS LIMITED TO THE FEE CHARGED.

L. Wong
L. WONG

PROVINCIAL ASSAYER

COPY

Analytical and Consulting Chemists, Bulk Cargo Specialists, Surveyors, Inspectors, Samplers, Weighers

MEMBER: American Society For Testing Materials • The American Oil Chemists' Society • Canadian Testing Association
 REFEREE AND OR OFFICIAL CHEMISTS FOR: National Institute Of Oilseed Products • The American Oil Chemists' Society
 OFFICIAL WEIGHMASTERS FOR: Vancouver Board Of Trade



GENERAL TESTING LABORATORIES

DIVISION SUPERINTENDENCE COMPANY (CANADA) LTD.

1001 EAST PENDER ST., VANCOUVER, B.C., CANADA, V6A 1W2
 PHONE (604) 254-1647 TELEX 04-507514 CABLE SUPERVISE

TO:
LATEKO RESOURCES LTD.
 433 - 355 Burrard Street
 Vancouver, B.C.
 V6C 2G8

CERTIFICATE OF ASSAY

No.: **7807-2654 B** DATE: **Aug. 3/78**

We hereby certify that the following are the results of assays on: **Ore**

MARKED	GOLD	SILVER	Uranium oxide	XXX	XXX	XXX	XXX	XXX
			U ₃ O ₈ (%)					
# 1			< 0.001					
# 2			< 0.001					
# 3			< 0.001					

NOTE: REJECTS RETAINED ONE MONTH. PULPS RETAINED THREE MONTHS. ON REQUEST PULPS AND REJECTS WILL BE STORED FOR A MAXIMUM OF ONE YEAR.

ALL REPORTS ARE THE CONFIDENTIAL PROPERTY OF CLIENTS. PUBLICATION OF STATEMENTS, CONCLUSION OR EXTRACTS FROM OR REGARDING OUR REPORTS IS NOT PERMITTED WITHOUT OUR WRITTEN APPROVAL. ANY LIABILITY ATTACHED THERETO IS LIMITED TO THE FEE CHARGED.

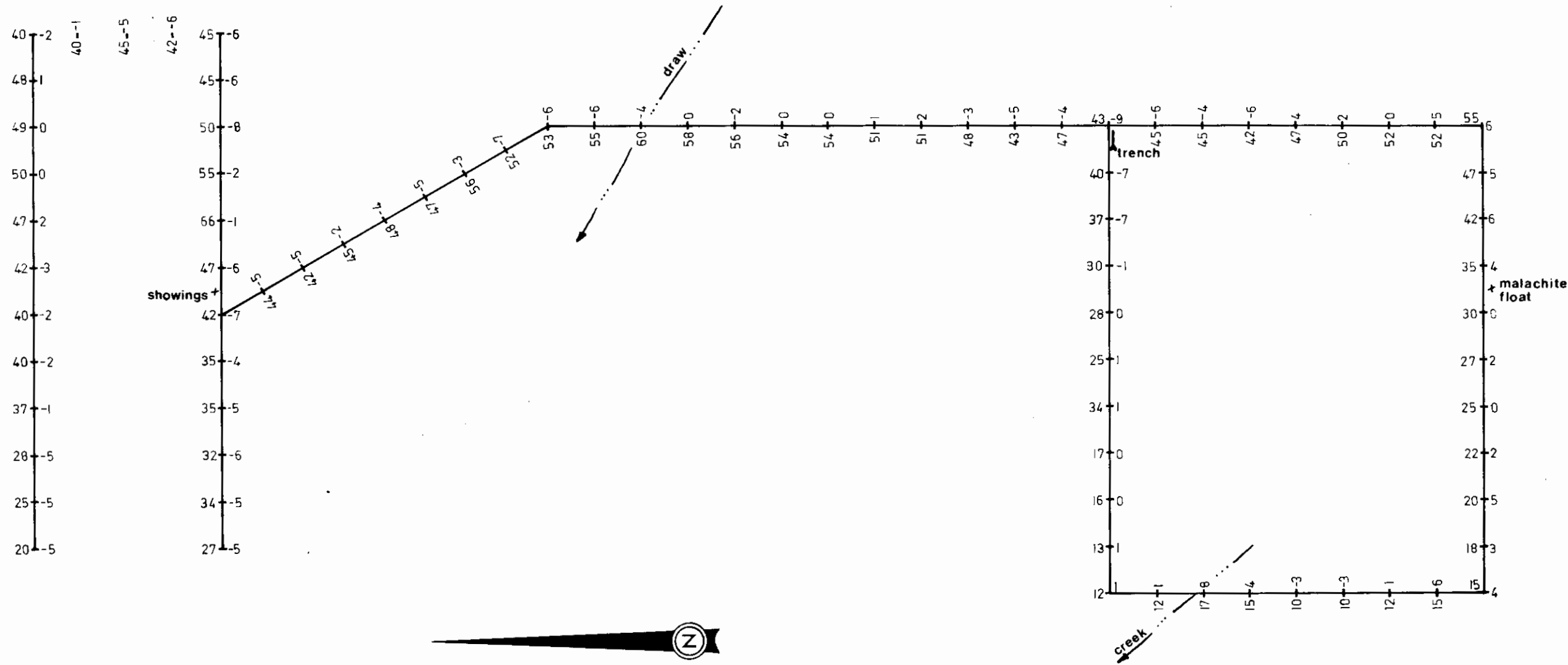
[Handwritten signature]
L. WONG

PROVINCIAL ASSAYER

COPY

Analytical and Consulting Chemists, Bulk Cargo Specialists, Surveyors, Inspectors, Samplers, Weighers

MEMBER: American Society For Testing Materials • The American Oil Chemists' Society • Canadian Testing Association
 REFEREE AND OR OFFICIAL CHEMISTS FOR: National Institute Of Oilseed Products • The American Oil Chemists' Society
 OFFICIAL WEIGHMASTERS FOR: Vancouver Board Of Trade

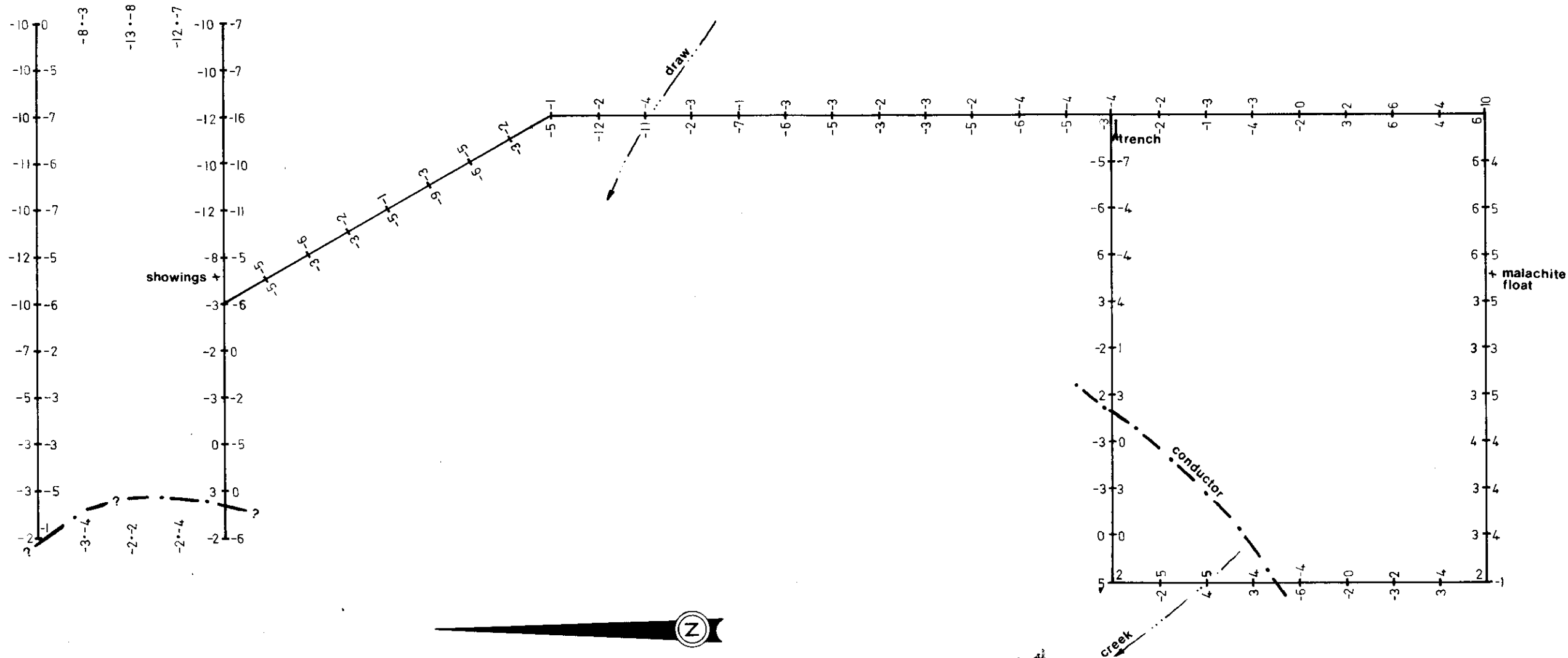


V. W.

NO MAP#
 Doc# 0910372
 54

V.L.F. ST. 23.4 HAWAII Operator S.PRESUNKA

LaTEKO RESOURCES LTD.		
NEIL & FOX CLAIMS		
ELECTROMAGNETIC SURVEY		
SOUTH GRID		
WATSON LAKE M.D.		95-E-6
N.V.C. ENGINEERING LTD.		VANCOUVER B.C.
DATE	Sept. 1978	SCALE: 1 : 2,500
		FIG. 8



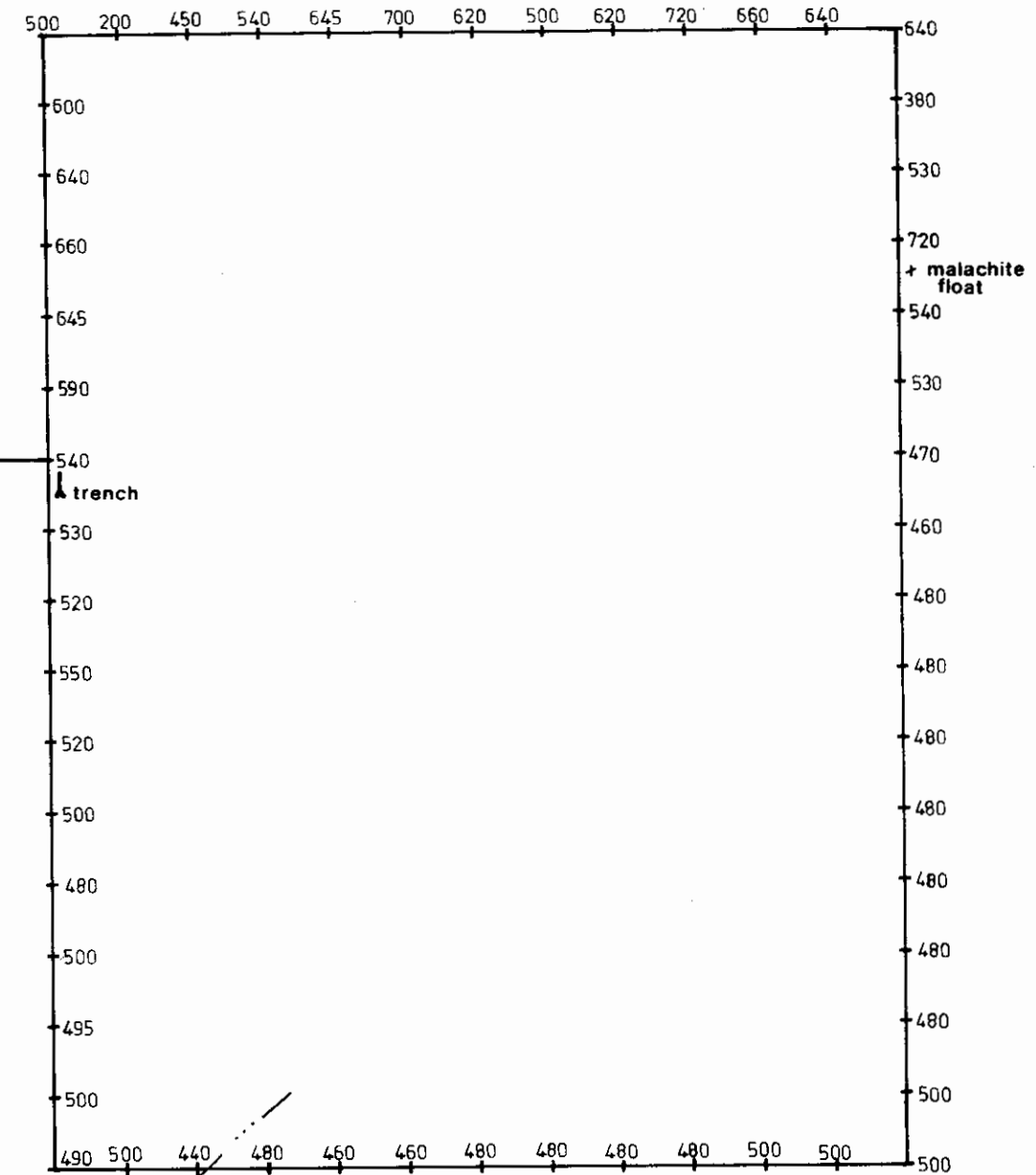
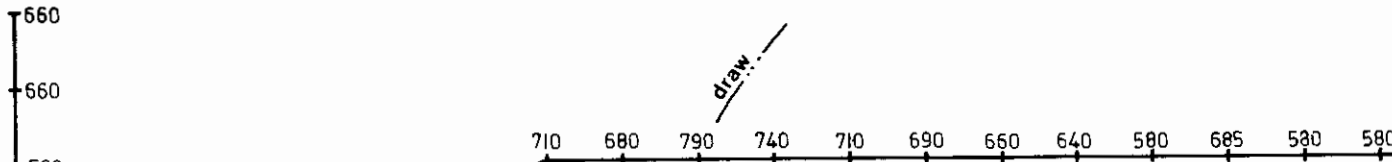
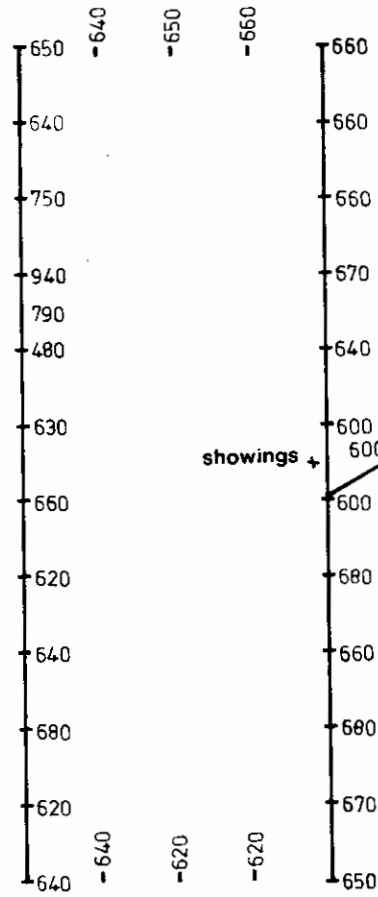
No map #
Doc # 090372

55

V. G.

V.L.F. ST. 17.8 MAINE Operator S. PRESUNKA

LaTEKO RESOURCES LTD.		
NEIL & FOX CLAIMS		
ELECTROMAGNETIC SURVEY		
SOUTH GRID		
WATSON LAKE M.D.		95-E-6
N.V.C. ENGINEERING LTD.		VANCOUVER B.C.
DATE: Sept. 1978	SCALE: 1 : 2,500	FIG. 7



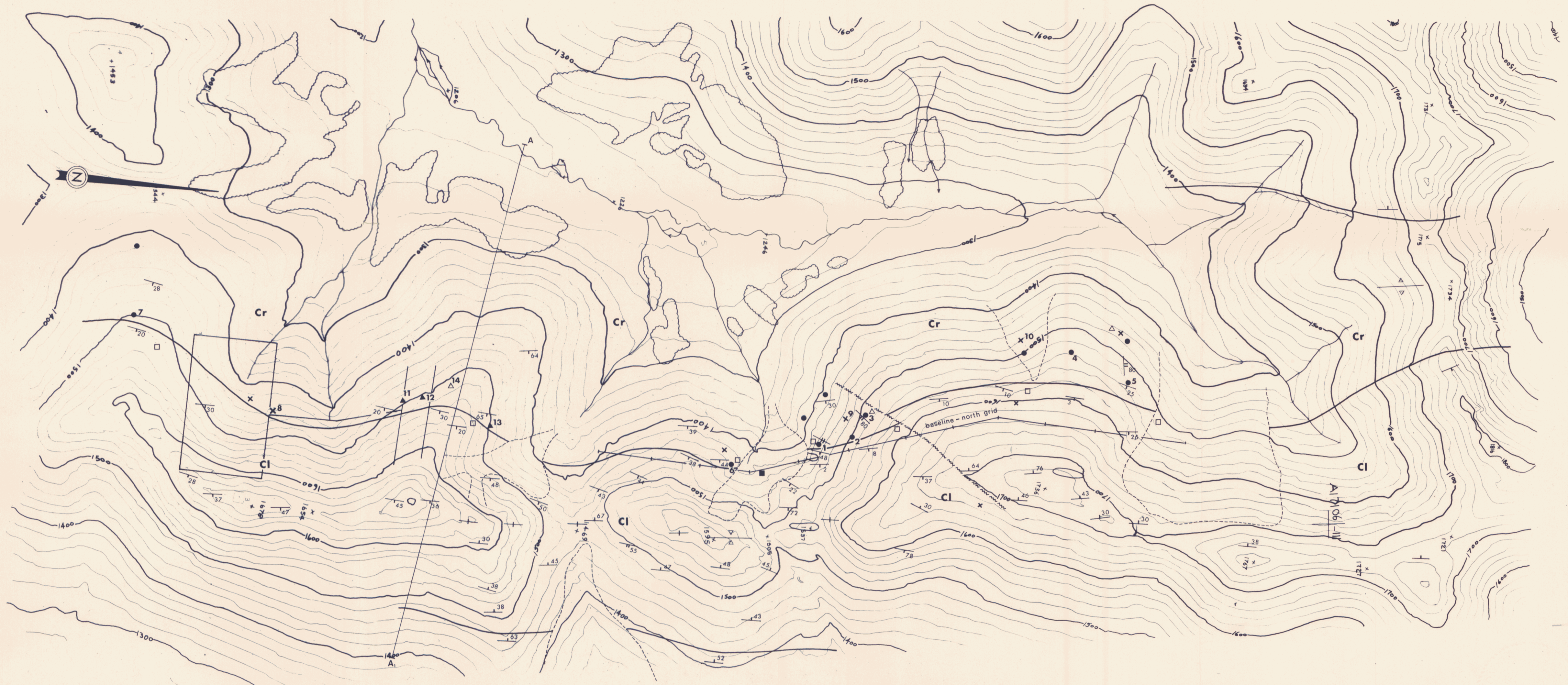
No MAP#
Doc# 090372

56

Operator P. PRESUNKA
values in gammas

LaTEKO RESOURCES LTD.		
NEIL & FOX CLAIMS		
MAGNETOMETER SURVEY		
SOUTH GRID		
WATSON LAKE M.D.		95-E-6
N.V.C. ENGINEERING LTD.		VANCOUVER B.C.
DATE: Sept. 1978	SCALE: 1 : 2,500	FIG. 9

V. W



LEGEND

GEOLOGY

- Cr Carbonate rocks
buff dolomite and grey limestone
- Cl Clastic rocks
Argillite, quartzite, slate
- Intrusive
Fine grained gabbroic rock
- Geological contact
- Fault
- Outline of coarse talus

- Bedding
- Major fracture system
- Syncline axis
- Anticline axis

MINERAL SHOWINGS

- Cu showing
- ▲ Pb-Ag showing
- × Cu float
- △ Pb-Ag float
- 1-14 Showing numbers
- Claim post
- Campsite
- ↔ Cross-section

LaTEKA RESOURCES LTD.			
NEIL & FOX CLAIMS			
GEOLOGICAL MAP			
WATSON LAKE M.D.	95-E-6		
N.V.C. ENGINEERING LTD.	VANCOUVER B.C.		
DATE: Sept. 1978	SCALE: 1:10,000	FIG. 3	

No MAP# Doc# 090372 (50)

U.W.



LaTEKO RESOURCES LTD.
 NEIL & FOX CLAIMS
ELECTROMAGNETIC SURVEY
 MAIN GRID

V.L.F. ST. 178 MAINE U.S.A.
 Operator S. PRESUNKA

WATSON LAKE M.D. 95-E-6
 N.V.C. ENGINEERING LTD. VANCOUVER B.C.
 DATE: Sept. 1978 SCALE: 1 : 2,500 FIG. 4

No Map# Doc# 090372 (51)

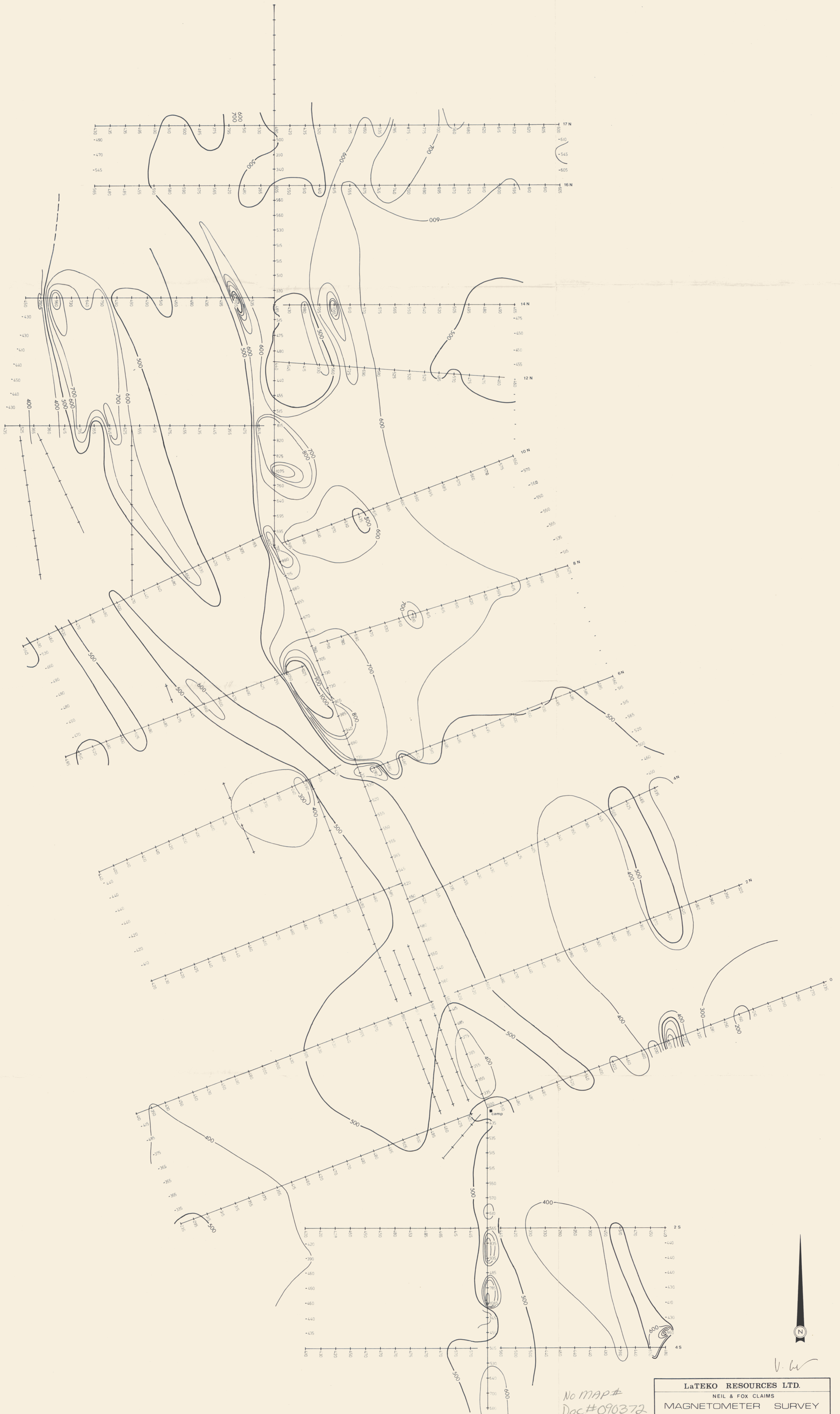


V. L.

LaTEKO RESOURCES LTD.			
NEIL & FOX CLAIMS			
ELECTROMAGNETIC SURVEY			
MAIN GRID			
WATSON LAKE M.D.		95-E-6	
N.V.C. ENGINEERING LTD.		VANCOUVER B.C.	
DATE	Sept. 1978	SCALE	1 : 2,500
			FIG. 5

V.L.F. ST. 18.6 & 23.4 SEATTLE & HAWAII
Operator S. PRESUNKA

No MAP#
Doc # 090372 (52)



No MAP#
 Doc#090372
 53

LaTEKO RESOURCES LTD.			
NEIL & FOX CLAIMS			
MAGNETOMETER SURVEY			
MAIN GRID			
WATSON LAKE M.D.		95-E-6	
N.V.C. ENGINEERING LTD.		VANCOUVER B.C.	
DATE	Sept. 1978	SCALE	1 : 2,500
			FIG. 6

Operator P. PRESUNKA
 All values in gammas

V. W.