



WELCOME NORTH MINES LTD. (N.P.L.)

1027 - 470 Granville St., Vancouver, B.C. V6C 1V5 Telephone (604) 687-1658

REPORT ON THE
RECONNAISSANCE GEOLOGICAL AND GEOCHEMICAL SURVEYS
OF THE
GK MINERAL CLAIMS
N.T.S. 105F-14, 105F-15
WHITEHORSE DISTRICT, YUKON TERRITORY

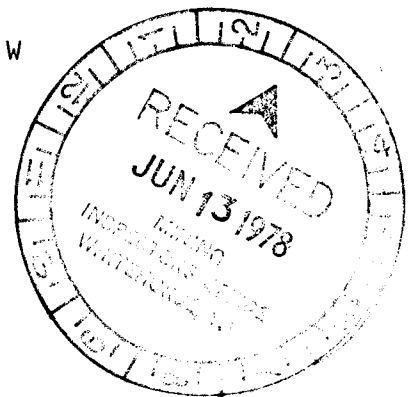
Latitude 61°55'N

Longitude 133°00'W

Work Period August 10 - December 15, 1977

Vancouver, B.C.
June 6, 1978

Graham H. Scott



090349

This report has been examined by the Geological Evaluation Unit and is recommended to the Commission to be considered as representation work in the amount of

\$3200.00

D. B. Craig

~~Assistant Engineer~~
~~Assistant Mining Engineer~~

Considered as representation work under Section 53 (a) Yukon Quartz Mining Act.

R. Baxter

R. BAXTER
Supervising Mining Recorder

R. Baxter
Commissioner of Yukon Territory

TABLE OF CONTENTS

	Page
SUMMARY AND CONCLUSIONS	1
INTRODUCTION	1
MINERAL CLAIMS	2
LOCATION AND ACCESS	2
PREVIOUS WORK	2
REGIONAL GEOLOGY	4
GEOLOGY	4
BARITE SAMPLING	8
PERSONNEL EMPLOYED	12
STATEMENT OF COSTS	13
AFFIDAVIT SUPPORTING STATEMENT OF COSTS	14
CERTIFICATE	15
FIGURES	
1. Project Area and Property Locations	3
2. Stratigraphic Correlations in the St. Cyr Range	5
3. Compilation Map	6
4. GK Claims: Stratigraphic Column	7
5. GK Claims: Geologic Cross-Section A-A'	9
6. GK Claims: Geologic Cross-Section B-B'	10

SUMMARY AND CONCLUSIONS

Following the staking of 32 claims to cover bedded massive barite in Devono-Mississippian black shales, preliminary geological mapping and sampling were carried out in order to determine the thickness and extent of the barite horizons.

Two barite horizons separated by a thin band of cherty shale were delineated, their total combined thickness ranging between 50 and 100 feet. The barite beds have been traced for 5 miles along strike.

Initial sampling failed to indicate commercial grades of barite.

Although preliminary sampling of the barite has indicated that it is of no apparent commercial value, the presence of large quantities of barite is significant from the point of view of its related lead-zinc potential. Other Devono-Mississippian lead-zinc deposits in the Selwyn Basin, more notably the Driftpile Creek and TOM-JASON, are barite-hosted or have barite within their immediate environment. In this respect the GK barite occurrences require further exploration for their lead-zinc potential.

INTRODUCTION

The GK 1-32 claims were staked July 30, 1977 to cover a thick bedded barite occurrence within Devono-Mississippian stratigraphy, which equivalent hosts the TOM zinc-lead massive sulphide deposit at Macmillan Pass and the Driftpile Creek occurrences at Gataga Lakes in northern British Columbia. Claim acquisition was largely based upon the presence of major accessible tonnages of potentially economic barite apparent in the deposit.

The claim block received only cursory exploratory attention, consisting of preliminary mapping and sampling of the barite during the 1977 season.

MINERAL CLAIMS

The GK Group is comprised of the following mineral claims:

<u>N.T.S.</u>	<u>CLAIM</u>	<u>GRANT NUMBER</u>	<u>RECORDING DATE</u>
105F-15	GK 1 - 8	YA19362-YA19369	August 4, 1977
105F-14	GK 9 -32	YA19370-YA19393	August 4, 1977

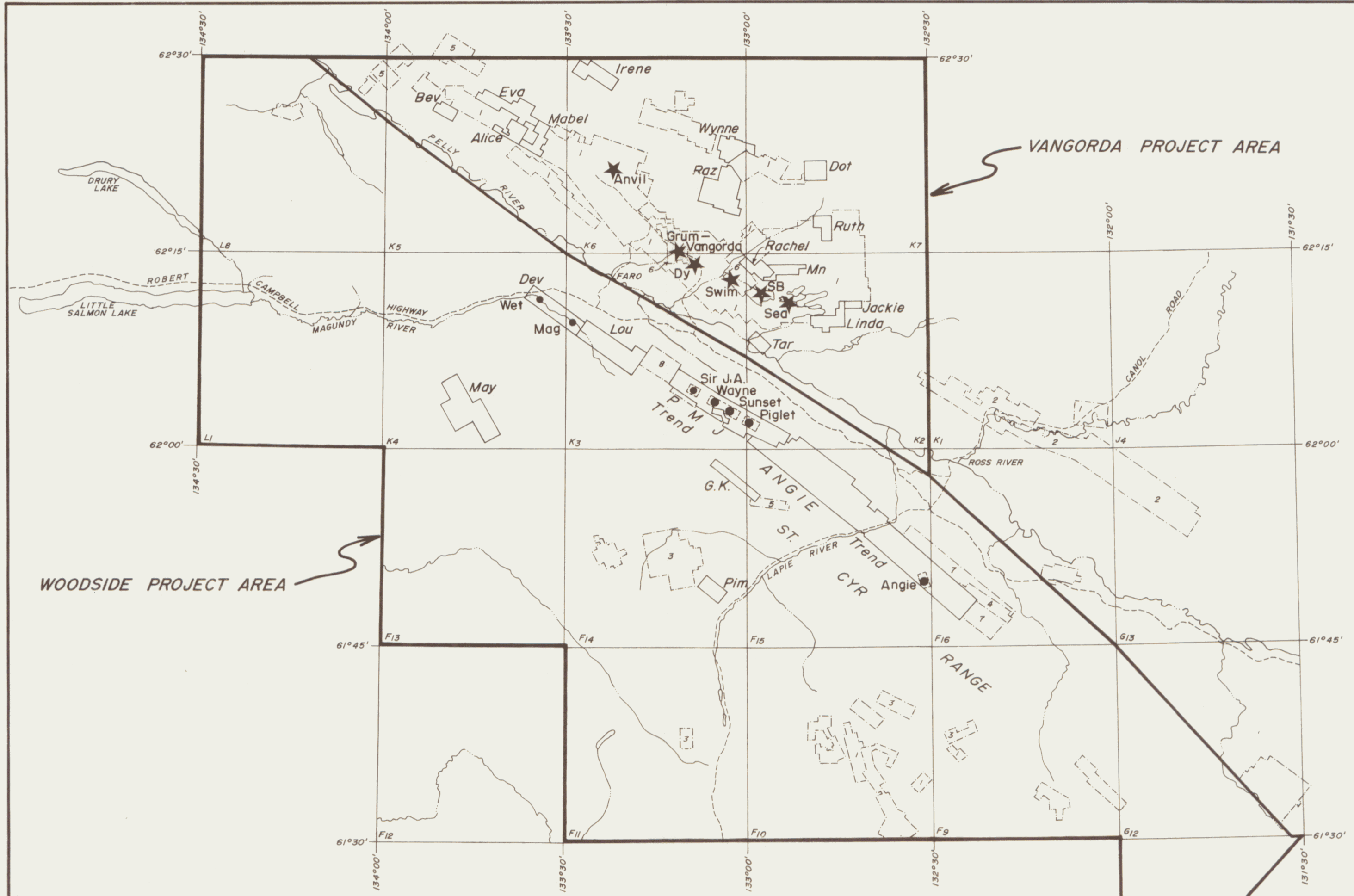
LOCATION AND ACCESS

The GK Group comprises 32 contiguous claims in a block 16 claims long by 2 claims wide which extends northwest - southeast along strike in the St. Cyr Range of the Southern Yukon Territory (Fig. 1). The property is reached by helicopter from Ross River 20 miles to the east, or Faro 20 miles to the north-northwest.

PREVIOUS WORK

The area now covered by the GK claims has not, to the knowledge of the author, been the subject of any concerted exploration activity in the past. Known work has however been carried out in nearby related areas as described below.

A property on the northeast side of Mt. Cook three miles to the east of the GK claims has had exploration in connection with lead-zinc bearing veins within Cambrian metasediments. Grab samples from these veins averaged 12.8 oz./ton silver, 22.8% lead and 12.5% zinc. The area was



LEGEND

- Massive Sulphide Deposit ★
- Mineral Occurrence ●
- River, Creek ———
- Highway - - - - -
- Claims:
- Getty Mining Pacific -
Welcome North Mines [Solid Box]
- Cyprus Anvil Mining [Dashed Box 1]
- Du Pont of Canada [Dashed Box 2]
- Utah Mines [Dashed Box 3]
- Cominco [Dashed Box 4]
- Amax Potash [Dashed Box 5]
- Kerr Addison Mines [Dashed Box 6]
- St. Joseph Exploration [Dashed Box 7]
- Brendex Resources [Dashed Box 8]
- Misc. Other [Dashed Box]

WELCOME NORTH MINES LTD.
GETTY MINING PACIFIC LTD.

**PROJECT AREA &
 PROPERTY LOCATIONS**

Scale: 1" = 8 miles Date: Feb. 1978 NTS 105
 Revised: By: Fig. 1

held as the FOX claims by Atlas Exploration Ltd. in 1966 and more recently as the WIMP claims by Utah Mines Ltd.

The mineralization is pertinent to a discussion of the GK claims as vein systems on the WIMP claims could equate to "stringer-zone" mineralization known to underlie stratiform lead-zinc barite deposits on the TOM property.

The GREW claims contiguous to the east of the GK are held by Amax Exploration Ltd. These claims were staked on the basis of lead-zinc geochemical anomalies discovered in the course of regional exploration by that company. The exploration objective of their program is believed to be lead-zinc mineralization in a tuffaceous horizon within Mississippian volcanics similar to "MM" deposit currently under investigation by Cyprus Anvil Mining Corp. in the nearby Seagull Lake area.

REGIONAL GEOLOGY

The St. Cyr Range is underlain by a southwest-dipping Cambrian to Triassic homoclinal sequence of shales, shaly carbonates, carbonates and minor volcanics. These rocks are truncated by the Tintina Fault on the northeast, and are internally faulted by numerous northwest-trending strikeslip and dipslip faults, some of which may also be thrust faults.

Fig. 2 is a stratigraphic column of the main rock units exposed in the St. Cyr Range.

GEOLOGY

Preliminary geological mapping was carried out on the GK claims utilizing 1 mile scale topographic maps for control. Results of this mapping combined with data obtained from the G.S.C. publications (1977) are shown in Fig. 3 and Fig. 4. Lithologies are not described in detail due to the

WELCOME NORTH MINES LTD.

GETTY MINING PACIFIC LTD.

WOODSIDE PROJECT

STRATIGRAPHIC CORRELATIONS

IN THE ST CYN RANGE

DATE: 20/11/2010

BY: J. L. SMITH

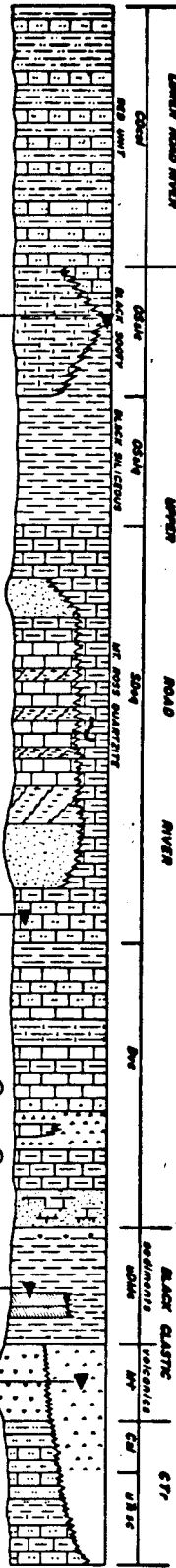
SCALE: 1:5000

SIN JA
SUNSET
WAYNE
PIGLET
BAY 1

ANGRE

TOM

HR



CARBON-ORDOVICIAN | ? ORDOVICIAN-SILURIAN ? | ? SILURIAN-LOWER DEVONIAN ? | DEVONIAN (UPPER ?) | DEVONIAN- | MISSIS- | CAR- | UPPER
 MISS. | SIPPAN | BAYNE | TRIASSIC

LAMBETH ROAD RIVER | BLACK SLATE | BLACK SILICEOUS | MT ROSS QUARTZITE | BLACK CLASTIC | STY



PMJ
CLAIMS

PMJ CLAIMS

OSsl

105K/2
105F/15

Dvc

SDsq

GREY CREEK

Dvc

SDsq

105K/3
105F/14

9000

Dvc

G.K. Claims Outline

Barite

4500

Dvc

uDMs

5500

6000

MT COOK

Mt. Cook Showing

5500

Dvc

uDMs

Mt

Mt

Csl

5000

uDMs

Mt

Csl


uEsc

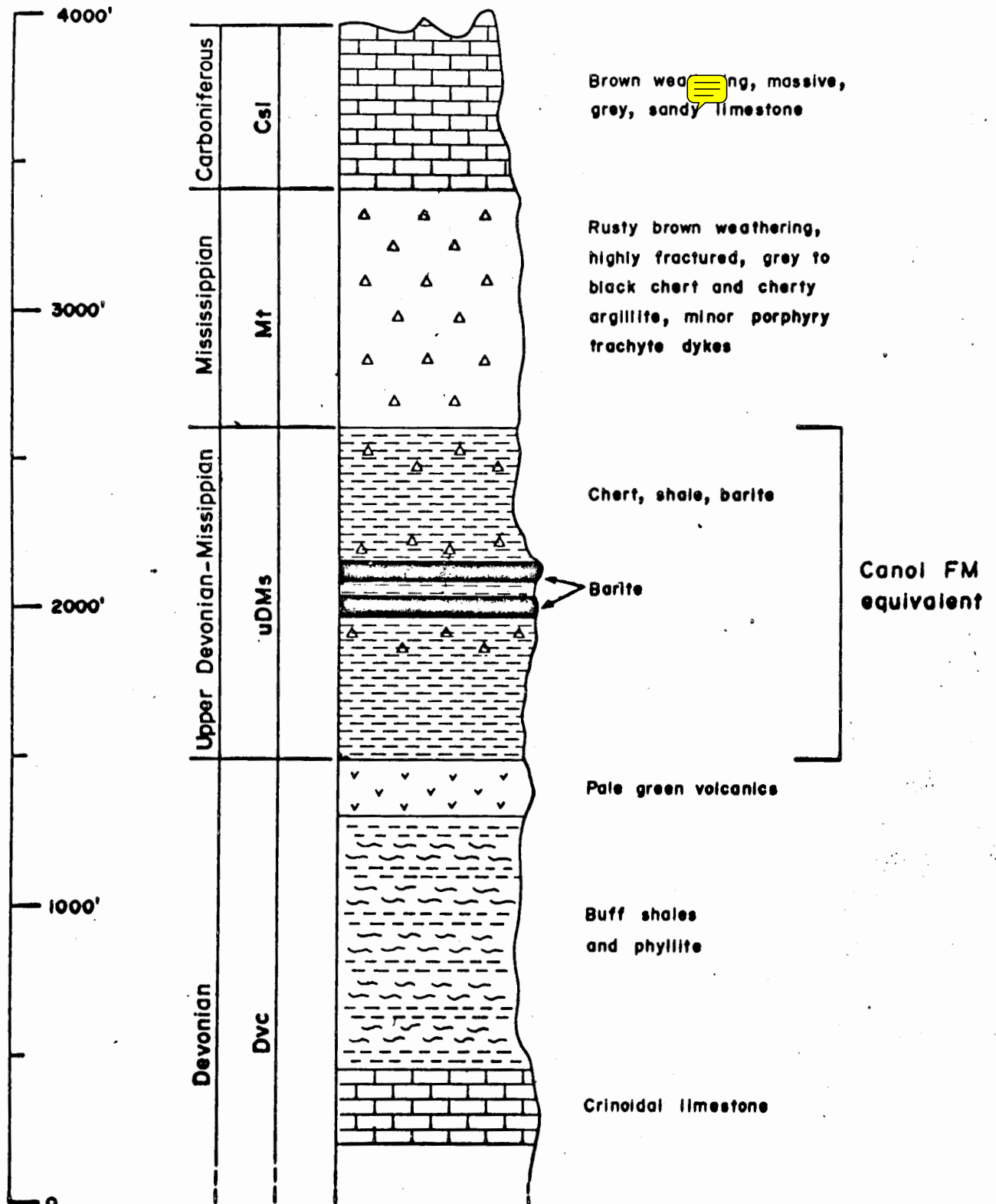
Mt


GREW Claims (Amax)

MAGUNDY RIVER

NOTE For legend, see Fig. 4

		
WELCOME NORTH MINES LTD.		
GETTY MINING PACIFIC LTD.		
WOODSIDE PROJECT		
G.K. CLAIMS		
COMPILATION MAP		
Scale: 1" = 1 mile	Date: APRIL 1978	NTS.
Revised: _____	By: J.G.	Fig. 3



 WELCOME NORTH MINES LTD.		
GETTY MINING PACIFIC LTD.		
WOODSIDE PROJECT		
G. K. CLAIMS		
STRATIGRAPHIC COLUMN		
Scale: vert. 1" = 500'	Date: APRIL 1978	NTS. 105F/14
Revised: _____	By: J. G. _____	Fig. 4

preliminary nature of the data.

The barite horizons are within Devonian-Mississippian black shale and chert (Fig. 5) believed to be time equivalent to the Canol Formation host to the TOM zinc-lead sulphide deposit mentioned previously, which is also associated with bedded barite. On the GK claims mapping revealed that the combined thickness of two barite horizons makes up 50 to 100 feet of a 200-foot thick section of black siliceous shale which dips steeply to the south. The barite can be traced in outcrop above the 5000-foot elevation for approximately 5 miles, however the thickest sections appear in a zone 2 miles long in the southeastern portion of the claim group. Fig. 6 represents a cross-section taken from this southeastern zone.

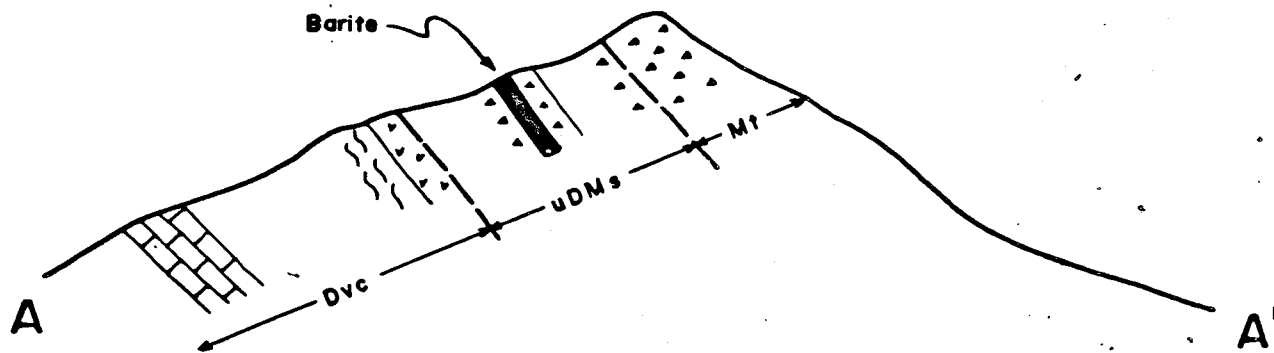
BARITE SAMPLING

The barite horizons on the GK claim group have not to date been systematically sampled to determine the specifications of barite occurring on the property.


Two large specimens from beds of the most apparently pure barite were however selected and assayed. Results of these assays are summarized below.

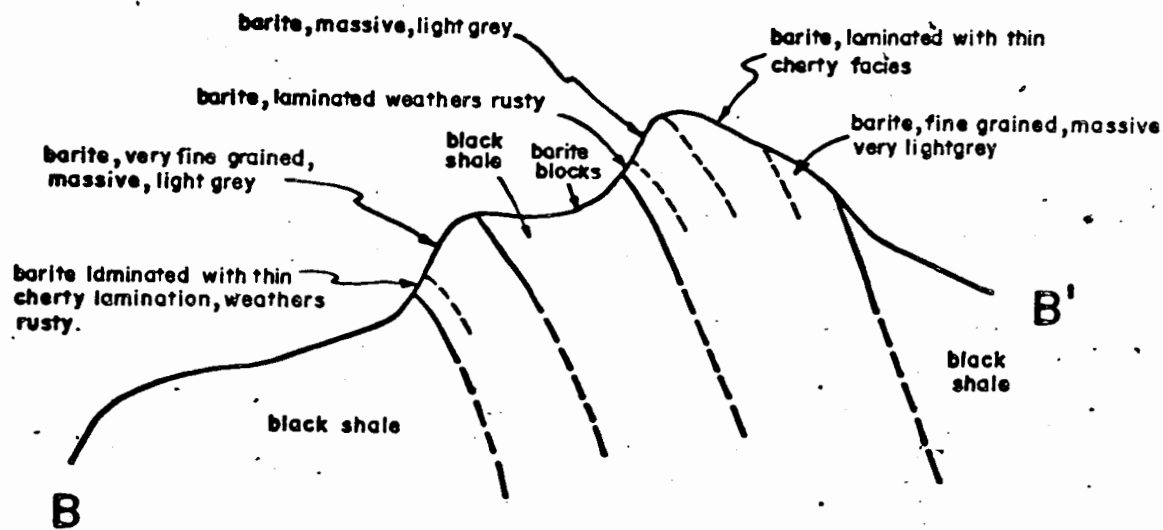
Sample No.	IRON		BARIUM as BaSO ₄	SILICA as SiO ₂	CALCIUM as Ca	SPECIFIC GRAVITY
	As	Fe				
1	.15		76.32	22.42	.38	3.86
2	.20		75.84	22.96	.41	3.82

These results would indicate the barite deposits on the GK claims do not meet minimum A.P.I. specifications as a drilling mud additive.




NOTE For location, see Fig. 3
 For legend, see Fig. 4

 WELCOME NORTH MINES LTD.		
GETTY MINING PACIFIC LTD.		
WOODSIDE PROJECT		
G. K. CLAIMS		
GEOLOGIC CROSS-SECTION A-A'		
Scale: 1" = 1000'	Date: JAN. 1978	NTS 105E/14
Revised: _____	By: W.J.C.	Fig. - 5 -



MT. COOK BARITE SHOWING
(View Southeast)

NOTE: For location, see Fig. 3

 WELCOME NORTH MINES LTD.		
GETTY MINING PACIFIC LTD.		
WOODSIDE PROJECT		
G.K. CLAIMS		
GEOLOGIC CROSS-SECTION B-B'		
Scale: 1" = 100 FEET	Date: JAN. 1978	NTS. 105 F/14
Revised: _____	By: W.J. Crawford	Fig. - 6 -

Further more representative check samples throughout the barite horizons should be taken to determine if specific sections may meet commercial standards.