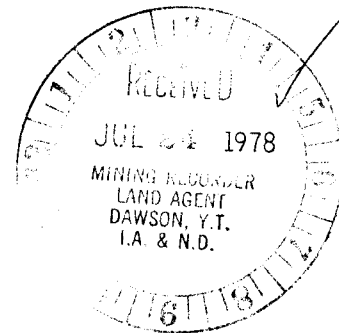


RADIOMETRICS AND SOIL GEOCHEMISTRY  
 3-2-Many 1-16 CLAIMS  
 DAWSON MINING DISTRICT  
 YUKON TERRITORY  
 115 J/15



This report has been examined by the Geological Evaluation Unit and is recommended to the Claims Office to be considered as representative work in the amount of \$64,000.00

*[Signature]*  
 District Geologist or  
 Resident Mining Engineer

Considered as representative work under Section 53 (4) Yukon Quartz Mining Act.

*[Signature]*  
 G. R. BAXTER  
 Supervising Mining Recorder  
 Commissioner of Yukon Territory

July, 1978  
 090344

C.J. Riley  
 (District Geologist)

TABLE OF CONTENTS

	<u>Page</u>
1 - GENERAL .....	1
1.1 - Introduction .....	1
1.2 - Previous Work .....	1
1.3 - Claims .....	2
2 - FIELD PROGRAMME .....	2
2.1 - Introduction .....	2
2.2 - Logistics .....	2
2.3 - Radiometric Survey.....	4
2.4 - Geochemical Survey .....	4
2.5 - Geology .....	4
3 - RESULTS .....	5
3.1 - Radiometrics .....	5
3.2 - Geochemistry .....	5
3.3 - Geology .....	7
4 - DISCUSSION, CONCLUSIONS, RECOMMENDATIONS .....	9
4.1 - Discussion .....	9
4.2 - Conclusions .....	11
4.3 - Recommendations .....	11

LIST OF ILLUSTRATIONS

	<u>Following Page</u>
Figure 1    Location Map	1
Figure 2    Claims and Grid	2
Figure 3    Orientation Pits	7
Uranium in Soils - Contoured Map	In Pocket
Radiometrics - Contoured Map	In Pocket

## 1 - GENERAL

### 1.1 - INTRODUCTION

The 3-2 Many property consists of 16 contiguous mineral claims located in the Dawson Range approximately 12 kilometres north of the junction of Isaac Creek with the Yukon River. The claims are situated on claim sheet 115 J/15 at  $62^{\circ} 54'$  N latitude and  $138^{\circ} 00'$  W longitude.

Attention was drawn to this showing by analysis of stream sediment data in 1977, which returned an anomalous uranium value. Follow-up work confirmed the anomaly and 16 claims were staked.

In 1978, a grid was established over part of the claim group and geochemical soil sampling and radiometric surveying were carried out. This report presents the results of these surveys.

### 1.2 - PREVIOUS WORK

The geology of the area was mapped by D.J. Tempelman-Kluit and reported in G.S.C. Paper 73-41 entitled "Reconnaissance Geology of Aishihik Lake, Snag and part of Stewart River Map Areas, West Central Yukon." The area is underlain by the Yukon Group, a term used to collectively refer to Precambrian and Palaeozoic rocks present in Central Yukon. The rock units on the property consist of quartz, mica, amphibole schist intermixed with gneiss and are intruded by a stock of Coffee Creek granite of probable Cretaceous age. The schists and gneisses of the Yukon Group are metamorphosed to the upper greenstone facies and have a well developed foliation. The age of these rocks in the immediate vicinity of the 3-2 Many claims is unknown.



FIG. 1



**ELDORADO NUCLEAR LIMITED**

**PROJECT 522**

**LOCATION MAP**

**3-2-MANY CLAIMS**

**SCALE: 1" = 120 mi**

### 1.3 - CLAIMS

<u>CLAIM</u>	<u>GRANT NO.</u>	<u>DATE STAKED</u>	<u>STAKER</u>
3-2 Many 1-8	YA10228-35	June 23, 1977	W.J. Olsson
3-2 Many 9-16	YA10236-43	June 23, 1977	J. Dennet

## 2 - FIELD PROGRAMME

### 2.1 - INTRODUCTION

Work on these claims involved a radiometric survey and a geochemical soil sampling programme covering 7 claims. In addition, geologic investigation was carried out over the claims in general.

As control for the surveys, a compass-oriented, slope corrected chained baseline was established with stations at 100 metre intervals. Compass-controlled, slope corrected topofill lines were extended 500 metres either side of the baseline with stations established at 100 metre intervals. In the central area of the claims, 4 of these lines were extended 900 metres north of the baseline. Soil samples were collected at each station as well as rock chip samples from the C horizon where possible. Radiometric readings were taken at 25 metre intervals along the lines.

The east, north and west margins of the granite stock were examined as well as the internal parts enclosed by the claim group. A study was made of rock chips collected on the grid.

### 2.2 - LOGISTICS

This work was carried out by a 10 man party operating from a base camp at Isaac Creek. Mobilization on May 15, 1978 of camp personnel and fuel was carried out by Twin Otter from Whitehorse and Carmacks to Casino airstrip. Camp was then slung by Hughes 500 helicopter to Isaac Creek.

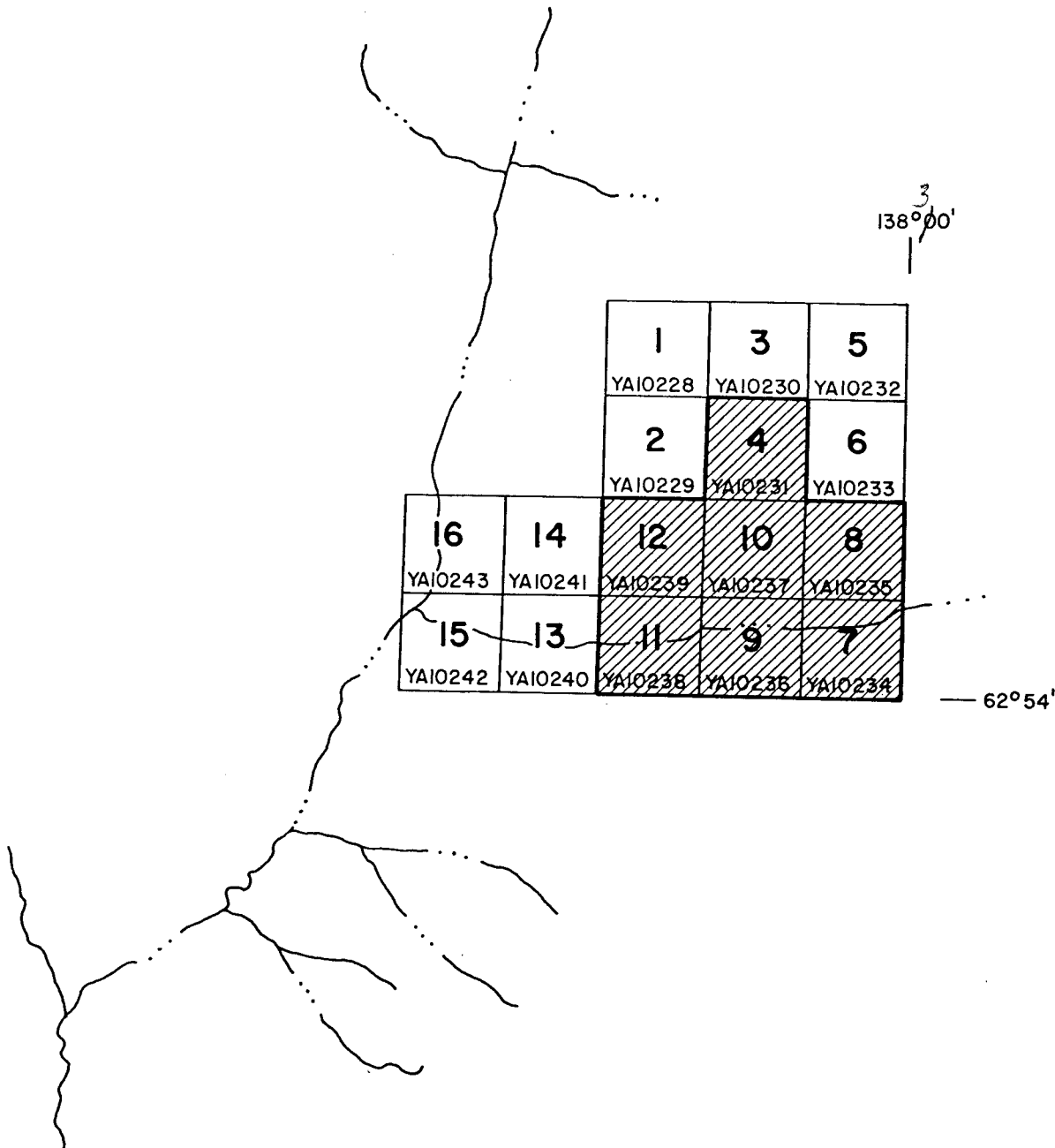


FIG. 2

<b>ELDORADO NUCLEAR LIMITED</b>
<b>PROJECT 522</b>
<b>3-2-MANY CLAIMS</b>
<b>AREA OF GRID</b>
<b>SCALE 1" = 1/2 MILE</b>

All aircraft were supplied by Trans-North Turbo Air. Daily access to the claim group was by Hughes 500 helicopter attached to the party. A list of personnel and time spent on the claims is as follows:

<u>NAME</u>	<u>MOBILIZATION</u>	<u>WORK DATES</u>
C.J. Riley, District Geologist, Eldorado Nuclear	May 15	May 17-18
H.D. Knipping, Senior Geoscience Advisor Eldorado Nuclear	May 15	May 17-18-19
C.F. Gleeson, Consulting Geochemist	May 15	May 16-17-18
W.J. Olsson Geologist Eldorado Nuclear	May 15	May 17-18
E. Zaleski Geologist Eldorado Nuclear	May 15	May 17-18-19-21
J. Pozzobon Senior Assistant	May 15	May 17-18-19-21
S. McAllistair Junior Assistant	May 15	May 17-18-19-21
B. Wilson Junior Assistant	May 15	May 17-18-19-21
B. Duncan Junior Assistant	May 15	May 17-18-19-21

One quarter of the mobilization costs have been charged to these claims since work was carried out on three other areas from the same camp.

This base camp was operated under Land Use Permit YB8J248 issued by the Renewable Resources Division of the Department of Indian and Northern Affairs.

### 2.3 - RADIOMETRIC SURVEY

The radiometric survey was carried out by taking readings at ground level at 25 metre intervals along lines spaced 100 metres apart. Total count was recorded in c.p.s. Instruments used were Scintrex BGS1SL total count scintillometres. A contoured map of this survey is enclosed.

### 2.4 - GEOCHEMICAL SURVEY

Three orientation pits were dug and sampled under the supervision of C.F. Gleeson, consulting geochemist, to test various soil conditions. One pit was dug on a north facing moss covered slope underlain by permafrost. One was dug in a south facing thawed slope, and one in a creek bottom area where high silt anomaly had been recorded. Results are appended as Figure 4.

Under direction of Gleeson, personnel were trained and carried out sampling of B horizon soils. In some places over frozen ground, a certain amount of organic material had to be included to obtain a sample. Some samples were unobtainable in outcrop areas. Soils were analyzed for uranium by Chemex Labs Ltd., North Vancouver, B.C., by standard fluorometric methods on a 0.25 g sample of ashed doubly acidified -80 mesh fraction material.

### 2.5 - GEOLOGY

Several traverses were made across the contacts of the granite plug with the Yukon group schists and gneisses. The objective was to determine if there was alteration of the granite or wall rocks or contamination of the granite. In most places the contact was covered and could not be examined directly. Where possible float was examined.

Rock chips were collected when possible at each soil sampling station. These have been examined macroscopically

in the field and will be used subsequently to determine if there is a mineralogic or chemical change associated with anomalies.

### 3 - RESULTS

#### 3.1 - RADIOMETRICS

The radiometric data has been plotted on a scale 1:4 000 and has been contoured. By visual examination, the 200 gamma level has been decided upon as threshold. Contour interval up to 200 gammas is 100 gammas and above 200 gammas is 50 gammas.

The contours indicate a general east-west trend following a topographic low (Creek Valley) along the baseline, the anomaly appears to lie somewhat to the north of the baseline which is possibly due to the permafrost underlying the side to the south and acting as a shield to gamma radiation. This would enhance the value of the anomalies located at 7 W and 16 N, 17 W 19 N, and 19 W 18 N.

Within the fairly broad east-west anomalous zone there are several fairly sharp anomalies although it is only rarely that they reach more than twice threshold value.

#### 3.2 - GEOCHEMISTRY

The results of the geochemical soil survey are presented on a contoured map. Contour intervals were selected to enhance the pattern shown by the geochemical response. Contour intervals selected are:

- 5 ppm Uranium
- 10 ppm Uranium
- 50 ppm Uranium
- 100 ppm Uranium
- 100 ppm Uranium increments

Very few values fall between 0.5 ppm and 5.0 ppm so 5 ppm U was adopted as the lower contour level. Once contoured, using the stated intervals, the geochemical pattern is clear and insertion of more closely spaced contours would make the map harder to read without much further definition of anomalous areas.

Results of silt and water samples from seeps and drainage channels are not included in the contouring as they represent a different sampling media. They are shown to try and indicate patterns and direction of surface migration of uranium.

Three directional trends of uranium concentration are apparent: one striking NE-SW, one N-S, and one NW-SE. These are all repeated trends. The strongest anomaly on the claim group is associated with a N-S trend and is located at 25N, 13W (535 ppm U). A nearby silt sample from a drainage channel ran 1,100 ppm U. Values for this anomaly increase down slope and may indicate migration of uranium elements from a source located up slope from the strongest value.

The large anomaly at 22N, 12W shows the same pattern with the higher values being down slope.

There is some indication from stream patterns in the area that these trends of uranium concentration may represent fracture systems. Some streams strike N-S and NW-SE. No indication of a NE-SW direction is apparent from topography.

One of the interesting features of the map is the generally higher values and increased number of anomalies on the south portion of the grid. This is a north facing slope and is underlain by permafrost. This may be explained by the

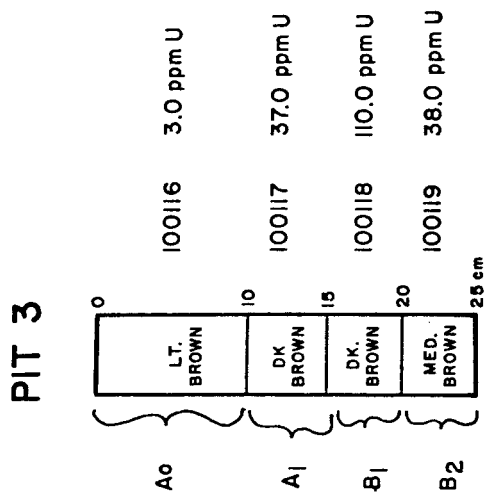
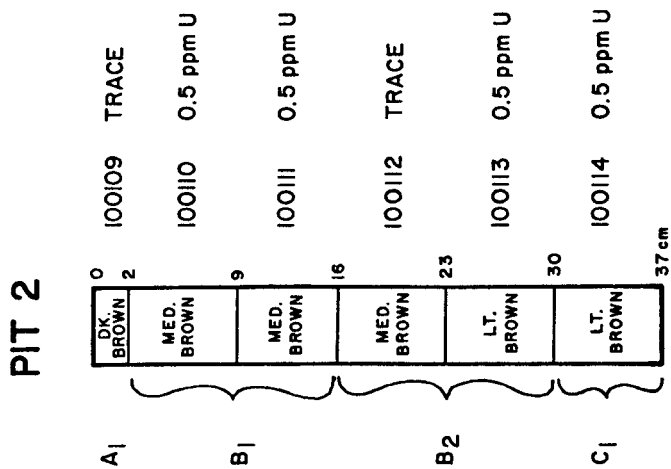
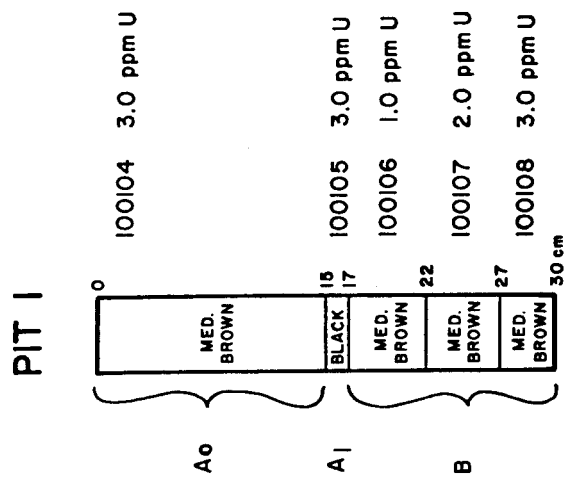
results from the orientation pits dug in both the frozen and thawed slopes (Figure 4). Pit No. 1, in frozen soil, indicates concentration of the uranium in the top organic rich layer, a drop in value in the B horizon is reached, and slightly increased values with depth. Pit No. 2, dug in the thawed, well-drained south facing slope, had a much thinner organic layer composed of plant remains rather than moss as at Pit 1. Uranium was not concentrated in this layer but does show a very slight concentration in the B1 horizon. This concentration is less than that exhibited by the B horizon in Pit 1. The B2 horizon again appears depleted in uranium with minor concentration in the C horizon. Pit No. 3 was dug in a drainage channel close to the point where high silt value had been recorded. Uranium was concentrated in this pit to a much higher degree than in the other two. The A<sub>0</sub> and A1 horizons showed some enhancement of the uranium but the highest concentration was in the B1 horizon. Values decreased in the B2 horizon.

In summation, it would appear that thawed, well drained slopes allowing good downward and lateral passage of waters tend not to concentrate uranium but are flushed out and allowed it to pass rather freely. Slopes underlain by permafrost with retarded passage of surface waters are not flushed and tend to retain the uranium.

Slopes associated with minor drainage channels can be considerably enriched in uranium. These areas may act as residual concentrators of uranium from the leached, thawed, well-drained slopes. It should be noted that in most cases of highly anomalous soil samples, silt and/or water samples were taken close by. This would indicate that these high values are associated with minor drainage channels.

### 3.3 - GEOLOGY

Examination of the granite showed it to vary between a true granite (quartz, microcline, K-feldspar, less than 5% biotite) and a quartz monzonite (quartz plagioclase,



PERMAFROST

THAWED

FIG. 3

**ELDORADO NUCLEAR LIMITED**

**PROJECT 522**  
**3-2-MANY CLAIMS**

**ORIENTATION SOIL PITS**

VERTICAL SCALE : 1 cm = 5 cm

K-feldspar less than 5% biotite), small amphibole crystals are very rare. The granite and quartz monzonite are equigranular anhedral to subhedral, with some feldspar being fairly well developed and others interstitial. The greatest difference, aside from feldspar composition, between the granite and the quartz monzonite is that the quartz in the monzonite tends to be somewhat smokey while in the granite it is clear to pale bluish. With the scarcity of outcrop it has been impossible to establish any distinct zonation between these two rock types. It would appear to be a random change controlled by the original composition of the magma. Further thin section study may clarify this.

Examination of both the granite and quartz monzonite phases located only minor muscovite. This, plus the relatively fresh appearance of the minerals and the apparent low temperature of emplacement, appear to preclude a possibility of a late deuteric phase, potentially rich in uranium, being present.

Outcrops close to the margin of the granite do not exhibit any marked changes either in the stock or in the country rock. Some xenoliths of gneiss have been located in the granite but are relatively unaltered and do not have reaction rims. Outcrops of gneiss contain more felsic material in the form of lit-par-lit injection and some cross-cutting aplites as the contact is approached. No hornfelsic or other contact effects were observed.

From this and the apparent uniformity of grain size, it is inferred that the granite was at a fairly low temperature level when intruded. As the surrounding gneisses had already been raised to a higher level of metamorphism in previous orogenies, they were not much affected by the intrusion of the granite with the exception of some soaking by granitic material.

When seen in outcrop the granite exhibits a number of joint sets as well as "sheeting", a horizontal layering effect due to cooling. No shears or faults were seen to cut the granite.

#### 4 - DISCUSSION, CONCLUSIONS, RECOMMENDATIONS

##### 4.1 - DISCUSSION

While diverging trends appear to be the case between radiometrics and soil geochemistry there is some correlation between anomalous areas on both maps.

1. Line 17 - 18 W, 19 - 20 N
2. Line 11 - 12W, 21 - 22N
3. Line 10W, 20 - 21N
4. Line 13W, 25 - 28N

Radiometric anomalies without corresponding geochemical anomalies are:

5. Line 19W, 18N
6. Line 18W, 22N
7. Line 15W, 20N (no geochemical sample taken)
8. Line 11W, 23N
9. Line 8W, 22N
10. Line 7W, 16N
11. Line 6 - 7W, 21 - 22N

Geochemical anomalies without corresponding radiometric anomalies are:

12. Line 15 - 20W, 16 - 18N (centred at 15W, 18N)
13. Line 9W, 18N
14. Line 6W, 17N
15. Line 5W, 23N

Both the radiometric and geochemical data show the best correspondence and generally higher values along the east-west topographic low which follows the baseline. This could

be expected since the low may represent either the residual concentration of uranium migrating down-slope with surface waters or the effect of a possible uranium deposit located in a structure represented by the topographic low.

In some places the higher radiometric readings up-slope from anomalous geochemical values might indicate that uranium is being transported down-slope while the gamma-emitting daughter products (bismuth 14) are left behind. If this is the case, it may be that uranium is being concentrated in the residual soil formed by weathering of the underlying granite and is being leached and washed away by surface waters. This may be supported by the generally higher values of uranium in the north facing frozen slope where migration of waters is inhibited. This would indicate that there is not a uranium deposit located up-slope from the creek. Anomaly 4 would not appear to be of this type and will require further investigation.

With the exception of anomaly 4 it would appear that the best possibility of an economic uranium deposit on these claims lies in the east-west topographic low at 20N. If this low represents a fault or other structure, sufficient porosity may have developed to allow uranium to be deposited. Source of this uranium would be the granite which contains up to 26 ppm Uranium. Groundwaters migrating through the granite, along fractures and joints, would leach the uranium and then deposit it in the open porosity of the fault.

In any case, more work will have to be done to investigate the reason for non-correspondence of radiometric and geochemical anomalies. Individual anomalies will have to be investigated in detail.

#### 4.2 - CONCLUSIONS

1. Surface geological investigation does not delimit distinct areas of granite, quartz monzonite or alteration. Detailed examination of rock chips might.
2. Little muscovite was found in rocks on the claims. There would not appear to be a deuteric phase of the granite present.
3. The permafrost underlain north facing slope appears to concentrate or retain uranium to a greater degree than does the thawed south facing slope.
4. Minor drainage channels appear to concentrate uranium in soils and silts.
5. Only partial correspondence between radiometric and geochemical anomalies was observed. There are a larger number of unrelated anomalies.
6. It is possible that migration of uranium down slope may be a partial cause for the non-correspondence of radiometric and geochemical data.

#### 4.3 - RECOMMENDATIONS

1. Detailed investigation of individual anomalies should be carried out by more intensive sampling, radiometric readings and possibly trenching.
2. Grid coverage should be extended to cover all claims.
3. Investigation peripheral to the claims should be carried out where anomalies are located close to the edges to determine if further staking is warranted.
4. Detailed investigation of rock chips should be carried out to determine if mineralogic or alteration changes occur with varying uranium content.
5. Trenching or diamond drilling will be necessary to fully evaluate this property.

*Cecil J. R. Jen.*





# CHEMEX LABS LTD.

212 BROOKSBANK AVE.  
NORTH VANCOUVER, B.C.  
CANADA V7J 2C1  
TELEPHONE: 985-0648  
AREA CODE: 604  
TELEX: 043-52597

ANALYTICAL CHEMISTS      GEOCHEMISTS      REGISTERED ASSAYERS

TO: Eldorado Nuclear Ltd.,  
P.O. Box 4640  
Whitehorse, Y.T.  
ATTN: Y1A 3V7

WATERS  
Project #522

CERTIFICATE NO. 43125  
INVOICE NO. 23906  
RECEIVED May 25, 1978  
ANALYSED June 2, 1978

SAMPLE NO. :	PPB Fluorine	PPB Uranium
101048	45	17.9
101507	30	1.90
101515	30	2.3
101525	40	7.9
101540	35	0.5
101543	45	19.5
101568	170	43
102005	45	26
102008	45	25
102011	45	27
102021	45	3.5
102046	25	1.9
02054	25	0.40



MEMBER  
CANADIAN TESTING

CERTIFIED BY: .....



# CHEMEX LABS LTD.

212 BROOKSBANK AVE.  
 NORTH VANCOUVER, B.C.  
 CANADA V7J 2C1  
 TELEPHONE: 985-0648  
 AREA CODE: 604  
 TELEX: 043-52597

ANALYTICAL CHEMISTS

GEOCHEMISTS

REGISTERED ASSAYERS

TO: C. R. Riley  
 Eldorado Nuclear Ltd.,  
 Box 4640  
 Whitehorse, Y. T.

CERTIFICATE NO. 43122  
 INVOICE NO. 23899  
 RECEIVED May 25/78  
 ANALYSED May 31/78

ATTN:

SAMPLE NO. :	PPM Uranium	PPM Fluorine
102568	1.0	
102570	3.0	
102572	535	
102574	13	
102576	75	
102578	4.0	
102579	8.0	
102581	< 0.5	
102583	19	
102584	2.0	
102586	3.0	
102588	7.0	
102590	< 0.5	
102592	< 0.5	
102594	250	
102598	72	315
103001	22	400
103002	1.0	
103004	2.5	
103006	0.5	
103008	< 0.5	
103010	< 0.5	
103012	< 0.5	
103014	0.5	
103016	0.5	
103018	0.5	
103020	0.5	
103022	5.0	145
103024	7	
103026	19	
103027	21	
103028	6.5	
103030	11	
103032	2.5	
103034	17	
103036	7.5	
103038	3.0	
103042	0.5	
103044	16	
103046	9.0	
Std.	24	295



MEMBER  
 CANADIAN TESTING  
 ASSOCIATION

CERTIFIED BY: .....

*H. Kelly*



# CHEMEX LABS LTD.

212 BROOKSBANK AVE.  
NORTH VANCOUVER, B.C.  
CANADA V7J 2C1  
TELEPHONE: 985-0648  
AREA CODE: 604  
TELEX: 043-52597

ANALYTICAL CHEMISTS    GEOCHEMISTS    REGISTERED ASSAYERS

## CERTIFICATE OF ANALYSIS

TO: **C. R. Riley**  
**Eldorado Nuclear Ltd.**  
**Box 4640**  
**Whitehorse, Y.T.**

ATTN: **PROJ. #522**

CERTIFICATE NO. **43121**  
INVOICE NO. **23899**  
RECEIVED **May 25/78**  
ANALYSED **May 31/78**

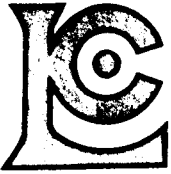
SAMPLE NO. :	PPM	PPM
	Uranium	Fluorine
102082	5.0	200
102083	14	
102084	6.5	
102086	9.0	
102088	6.0	
102089	5.0	
102091	1.0	
102093	2.5	
102095	6.0	
102504	< 0.5	
102506	< 0.5	
102508	< 0.5	
102510	< 0.5	
102511	< 0.5	
102513	3.5	
102515	1.5	
102517	14	
102520	12	
102522	2.0	
102525	145	260
102526	4.0	
102528	2.0	
102530	< 0.5	
102532	1.0	
102534	< 0.5	
102535	< 0.5	
102537	8.0	
102539	1.0	
102541	3.5	
102543	< 0.5	
102545	1.0	
102546	0.5	
102547	7.0	
102549	< 0.5	
102552	> 1000	90
102554	0.5	
102556	< 0.5	
102558	< 0.5	
102562	74	
102563	460	
102566	< 0.5	
STD.	24	310



MEMBER  
CANADIAN TESTING  
ASSOCIATION

CERTIFIED BY: *[Signature]*





# CHEMEX LABS LTD.

212 BROOKSBANK AVE.  
NORTH VANCOUVER, B.C.  
CANADA V7J 2C1  
TELEPHONE: 985-0648  
AREA CODE: 604  
TELEX: 043-52597

ANALYTICAL CHEMISTS

GEOCHEMISTS

REGISTERED ASSAYERS

TO: Eldorado Nuclear Ltd.  
225 Albert Street, Ste. 400  
Ottawa, Ontario  
K1P 6A9

ATTN: PROJ #522

CERTIFICATE NO. **43120**  
INVOICE NO. **23899**  
RECEIVED **May 25/78**  
ANALYSED **May 31/78**

SAMPLE NO. :	PPM Uranium
101576	2.0
101577	3.0
101579	0.5
102001	0.5
102003	1.0
102006	10
102009	5.5
102013	5.5
102014	0.5
102016	3.0
102018	3.0
102020	6.5
102023	3.0
102025	1.5
102027	0.5
102029	1.0
102031	1.0
102033	0.5
102035	5.5
102037	1.0
102040	3.0
102042	5.5
102044	1.0
102047	0.5
102049	1.5
102051	10
102053	2.5
102055	1.5
102057	0.5
102060	0.5
102061	2.0
102063	6.0
102067	< 0.5
102068	1.0
102070	0.5
102073	1.0
102074	3.0
102076	7.0
102078	4.0
102080	7.5
STD.	22



MEMBER  
CANADIAN TESTING  
ASSOCIATION

CERTIFIED BY: *[Signature]*



# CHEMEX LABS LTD.

212 BROOKSBANK AVE.  
 NORTH VANCOUVER, B.C.  
 CANADA V7J 2C1  
 TELEPHONE: 985-0648  
 AREA CODE: 604  
 TELEX: 043-52597

ANALYTICAL CHEMISTS    GEOCHEMISTS    REGISTERED ASSAYERS

## CERTIFICATE OF ANALYSIS

TO: Eldorado Nuclear Ltd.  
 225 Alberta Street, Ste. 400  
 Ottawa, Ontario  
 K1P 6A9

ATTN: PROJ. #522

CERTIFICATE NO. 43119  
 INVOICE NO. 23899  
 RECEIVED May 25/78  
 ANALYSED May 31/78

SAMPLE NO. :	PPM	
	Uranium	Fluorine
101049	68	210
101050	0.5	
101052	< 0.5	
101054	< 0.5	
101056	< 0.5	
101058	< 0.5	
101060	< 0.5	
101062	< 0.5	
101064	< 0.5	
101066	135	
101504	4.5	
101505	1.5	
101508	2.0	
101510	0.5	
101512	1.5	
101517	2.0	
101519	1.5	
101521	2.0	
101523	19	
101524	60	
101526	< 0.5	
101528	< 0.5	
101530	< 0.5	
101532	< 0.5	
101533	< 0.5	
101536	4.0	
101538	4.0	
101541	9.0	
101544	< 0.5	
101546	< 0.5	
101548	< 0.5	
101550	< 0.5	
101552	< 0.5	
101554	< 0.5	
101556	< 0.5	
101569	< 0.5	
101570	< 0.5	
101572	< 0.5	
101573	0.5	
101575	< 0.5	
STD.	24	290



MEMBER  
 CANADIAN TESTING  
 ASSOCIATION

CERTIFIED BY: *HP [Signature]*



# CHEMEX LABS LTD.

212 BROOKSBANK AVE.  
 NORTH VANCOUVER, B.C.  
 CANADA V7J 2C1  
 TELEPHONE: 985-0648  
 AREA CODE: 604  
 TELEX: 043-52597

ANALYTICAL CHEMISTS      GEOCHEMISTS      REGISTERED ASSAYERS

CERTIFICATE NO. 43118

TO: Eldorado Nuclear Ltd.,  
 P.O. Box 4640  
 Whitehorse, Y.T.  
 Y1A 3V7

CERTIFICATE NO. **43118**  
 INVOICE NO. **23899**  
 RECEIVED **May 25, 1978**  
 ANALYSED **May 31, 1978**

ATTN: **C.R. Riley**

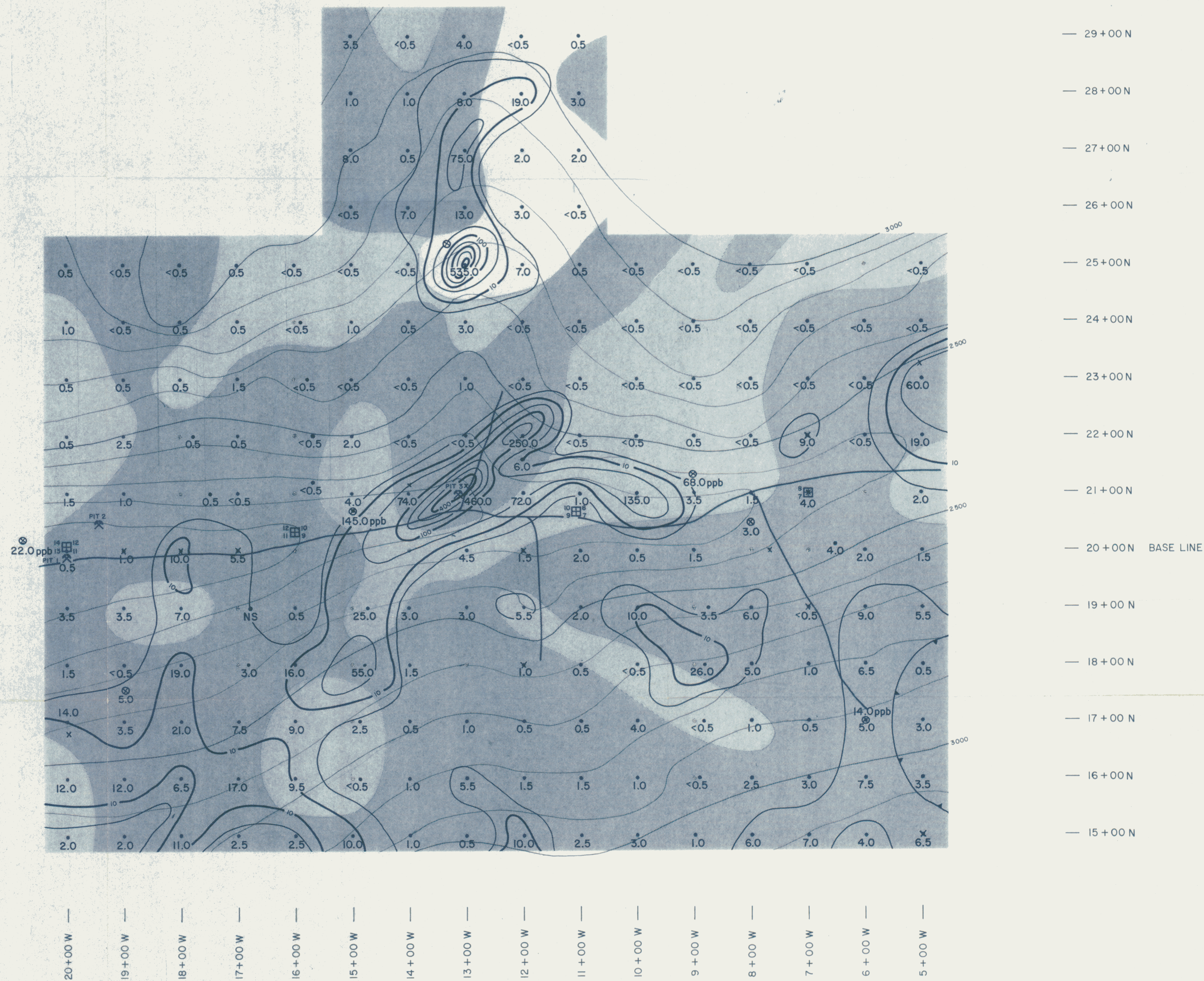
SAMPLE NO. :	PPM Uranium	PPM Fluorine
101001	1.5	
101003	0.5	
101005	0.5	
101007	1.0	
101009	0.5	
101011	0.5	
101013	0.5	
101015	1.5	
101017	0.5	
101019	< 0.5	
101021	3.5	
101023	< 0.5	
101025	3.5	
101027	12	
101029	2.0	
101033	3.0	265
101035	10	310
101037	5.0	200
101039	7.5	355
101041	4.0	280
101042	1.5	
101045	3.0	230
101046	3.5	
STD.	21	275

101001	1.5	
101003	0.5	
101005	0.5	
101007	1.0	
101009	0.5	
101011	0.5	
101013	0.5	
101015	1.5	
101017	0.5	
101019	< 0.5	
101021	3.5	
101023	< 0.5	
101025	3.5	
101027	12	
101029	2.0	
101033	3.0	265
101035	10	310
101037	5.0	200
101039	7.5	355
101041	4.0	280
101042	1.5	
101045	3.0	230
101046	3.5	
STD.	21	275



MEMBER  
 CANADIAN TESTING  
 ASSOCIATION

CERTIFIED BY: *[Signature]*

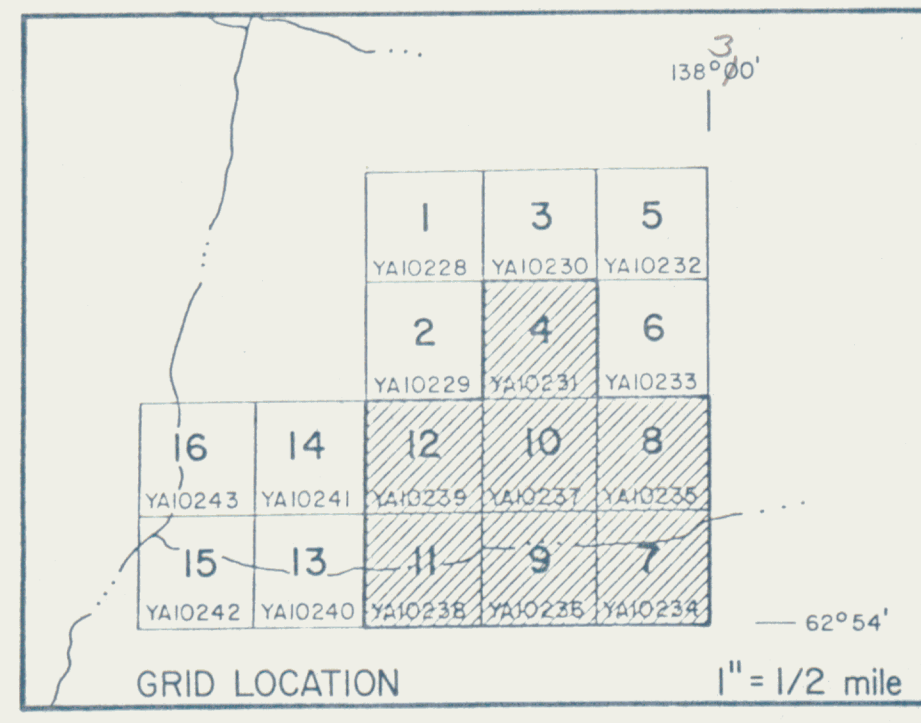


**CONTOUR INTERVAL**

5 ppm U
10 ppm U
50 ppm U
100 ppm U
200 ppm U
300 ppm U
400 ppm U
500 ppm U

**LEGEND**

- 1.6 SOIL SAMPLE STATION & NUMBER (Uranium in ppm)
- 0.2 WATER SAMPLE STATION & NUMBER (Uranium in ppb)
- × 2.7 SILT SAMPLE STATION & NUMBER (Uranium in ppm)
- FELSITE
- GRANITE
- QUARTZ MONZONITE
- TOPOGRAPHICAL CONTOURS (100 FT. INTERVAL)



**ELDORADO NUCLEAR LIMITED**

PROJECT 522  
DAWSON MINING DISTRICT

3 - 2 MANY CLAIMS

**URANIUM IN SOILS**

SCALE 1:5 000

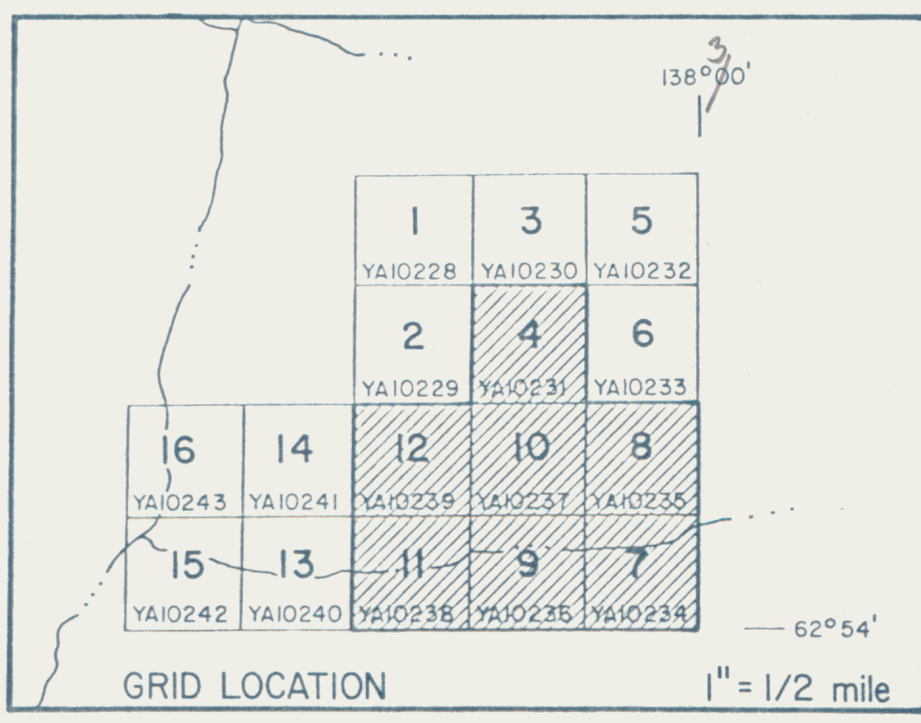


20+00 W | 19+00 W | 18+00 W | 17+00 W | 16+00 W | 15+00 W | 14+00 W | 13+00 W | 12+00 W | 11+00 W | 10+00 W | 9+00 W | 8+00 W | 7+00 W | 6+00 W | 5+00 W

**CONTOUR INTERVAL**  
 100 #  
 200 #  
 250 #  
 300 #  
 350 #  
 400 #

**LEGEND**

- 150 STATION  
(Radiometric value in counts per second)
- FELSITE
- GRANITE
- QUARTZ MONZONITE
- TOPOGRAPHICAL CONTOURS  
(100 FT. INTERVAL)



**ELDORADO NUCLEAR LIMITED**  
 PROJECT 522  
 DAWSON MINING DISTRICT  
 3 - 2 MANY CLAIMS  
**RADIOMETRIC SURVEY**  
 SCALE 1:5 000