

ASSESSMENT REPORT

STAR 1-32 CLAIMS

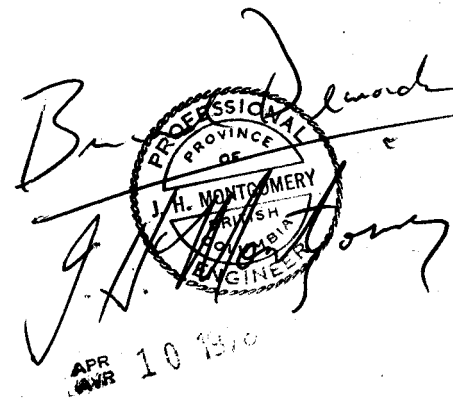
MAYO MINING DISTRICT - NTS 106C-3

BY

J. H. Montgomery, Ph.D., P.Eng.

B. Dewonck, B.Sc.

---



PRISM RESOURCES LIMITED  
214, 850 W. Hastings St.,  
Vancouver, B.C. V6C1E1

090305

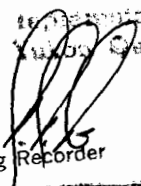
This report has been examined by the  
Geological Survey of Canada and is recom-  
mended to the Department to be consider-  
ed as representing work in the amount of

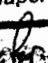
\$3200.00



~~Resident Mining Engineer~~

Considered as representation work under  
Section 23 (4) Yukon Quartz Mining Act.

  
H. R. BARTON  
Supervising Mining Recorder

 Commissioner of Yukon Territory

## TABLE OF CONTENTS

	<u>Page No.</u>
1.1 INTRODUCTION	1
1.2 LOCATION AND ACCESS	1
1.3 CLAIM INFORMATION	1
1.4 GEOLOGY AND MINERALIZATION	2
1.5 GEOCHEMISTRY	2
<del>1.6 COST BREAKDOWN</del>	<del>5</del>

## LIST OF TABLES

I CLAIM INFORMATION	1
II STAKING INFORMATION	2

## LIST OF FIGURES

FIGURE 1 CLAIM LOCATION	6
FIGURE 2A GEOCHEMICAL PLAN - Ag	Pocket
B " " - Pb	"
C " " - Zn	"

STAR 1-32 CLAIMS1.1 INTRODUCTION

The STAR claims were staked in the fall of 1976 to cover a portion of a major thrust fault zone that follows an east-west trend, passing approximately six miles (10 km) north of Ortell Lake. The property adjoins a large block of claims owned by McIntyre Mines, who have discovered significant silver-lead-zinc mineralization both above and below the thrust fault. Several other claim blocks have been staked in the area along this thrust fault. Work was done on the property late in July, 1977.

1.2 LOCATION AND ACCESS

The property is situated 10 miles (16 km) northwest of Ortell Lake on mapsheet 106C-3 latitude  $64^{\circ}8'30''$ , longitude  $133^{\circ}05'$  (See Figure 1). Topography ranges from 3500' to 5000' elevations on a north-facing slope on the south side of the Nadaleen River. Access is by helicopter.

1.3 CLAIM INFORMATION

The STAR claims are located in the Mayo Mining District and are held by Magnus Bratlein of 3475 West 34th Avenue, Vancouver, B.C. Work was carried out by Prism Resources Limited under an option agreement.

TABLE ICLAIM INFORMATION

<u>Claim</u>	<u>Record No.</u>	<u>Expiry Date</u>
STAR 1-8	YA13367-74	Oct. 28, 1977
STAR 9-16	YA13375-82	Oct. 28, 1977
STAR 17-24	YA13383-90	Oct. 28, 1977
STAR 25-32	YA13391-98	Oct. 28, 1977

TABLE IISTAKING INFORMATION

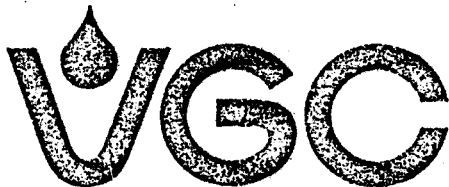
<u>Claim</u>	<u>Staker</u>	<u>Date Staked</u>
STAR 1-8	J. McLeod	Oct. 24, 1976
STAR 9-16	W.J. Spoonemore	Oct. 25, 1976
STAR 17-24	J. Dolan	Oct. 26, 1976
STAR 25-32	D. Makkonen	Oct. 26, 1976

1.4 GEOLOGY AND MINERALIZATION

Interest in this area focuses on the "Dawson" thrust fault which has the Hadrynian "Grit" unit superimposed on Paleozoic carbonates and shales, all generally dipping to the south-southeast. A brief examination of rock underlying the property was made in conjunction with geochemical sampling and it is apparent that the predominant rock type is Ordovician carbonate, overlain by Devonian-Pennsylvanian shales in the southernmost claims. This stratigraphic succession suggests that the thrust fault passes to the south of the claim block. No mineralization was found and the lack of unusual or prominent geological features together with low geochemical response minimizes the potential of the property.

1.5 GEOCHEMISTRY

Two days were spent sampling the property along lines 250 metres apart running north-south, with samples taken every 100 metres (See Figures 2A to C). A total of 261 samples were collected, of which 5 are silt samples, 4 are rock chip samples and the remainder are soils. All were analyzed for silver, lead and zinc. The geochemical plans of the results show disappointing values over the whole grid and the claims do not warrant further consideration at present. A description of analytical methods and procedures follows.



VANGEOCHEM LAB LTD. 1521 PEMBERTON AVE., NORTH VANCOUVER, B.C., CANADA

986-5211  
604-2990000

V7P 2S3

January 20, 1978

TO: Prism Resources Ltd.,  
# 214 - 850 West Hastings Street,  
Vancouver, B. C. V6C 1E1

FROM: Vangeochem Lab Ltd.,  
1521 Pemberton Avenue,  
North Vancouver, B. C. V7P 2S3

SUBJECT: Analytical procedure used to determine hot acid soluble Mo, Cu, Pb, Zn, Ag, and Cd in geochemical silt and soil samples.

1. Sample Preparation

- (a) Geochemical soil or silt samples were received in the laboratory in wet-strength  $3\frac{1}{2} \times 6\frac{1}{2}$  Kraft paper bags.
- (b) The wet samples were dried in a ventilated oven.
- (c) The dried soil and silt samples were sifted by using a shaking machine with 80-mesh stainless steel sieves. The plus 80-mesh fraction was rejected and the minus 80-mesh fraction was transferred into a new bag for analysis later.

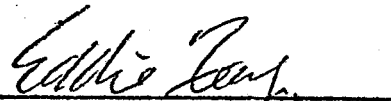
2. Methods of Digestion

- (a) 0.50 gram of the minus 80-mesh samples was used. Samples were weighed out by using a top-loading balance.
- (b) Samples were heated in a sand bath with nitric and perchloric acids (15% to 85% by volume of the concentrated acids respectively).
- (c) The digested samples were diluted with demineralized water to a fixed volume and shaken.

### 3. Method of Analysis

Mo, Cu, Pb, Zn, Ag, and Cd analyses were determined by using a Techtron Atomic Absorption Spectrophotometer Model AA4 or Model AA5 with their respective hollow cathode lamps. The digested samples were aspirated directly into an air and acetylene flame. The results, in parts per million, were calculated by comparing a set of standards to calibrate the atomic absorption unit.

4. The analyses were supervised or determined by Mr. Conway Chun and the laboratory staff.



Eddie Tang

VANGEOCHEM LAB LTD.

ET:mb

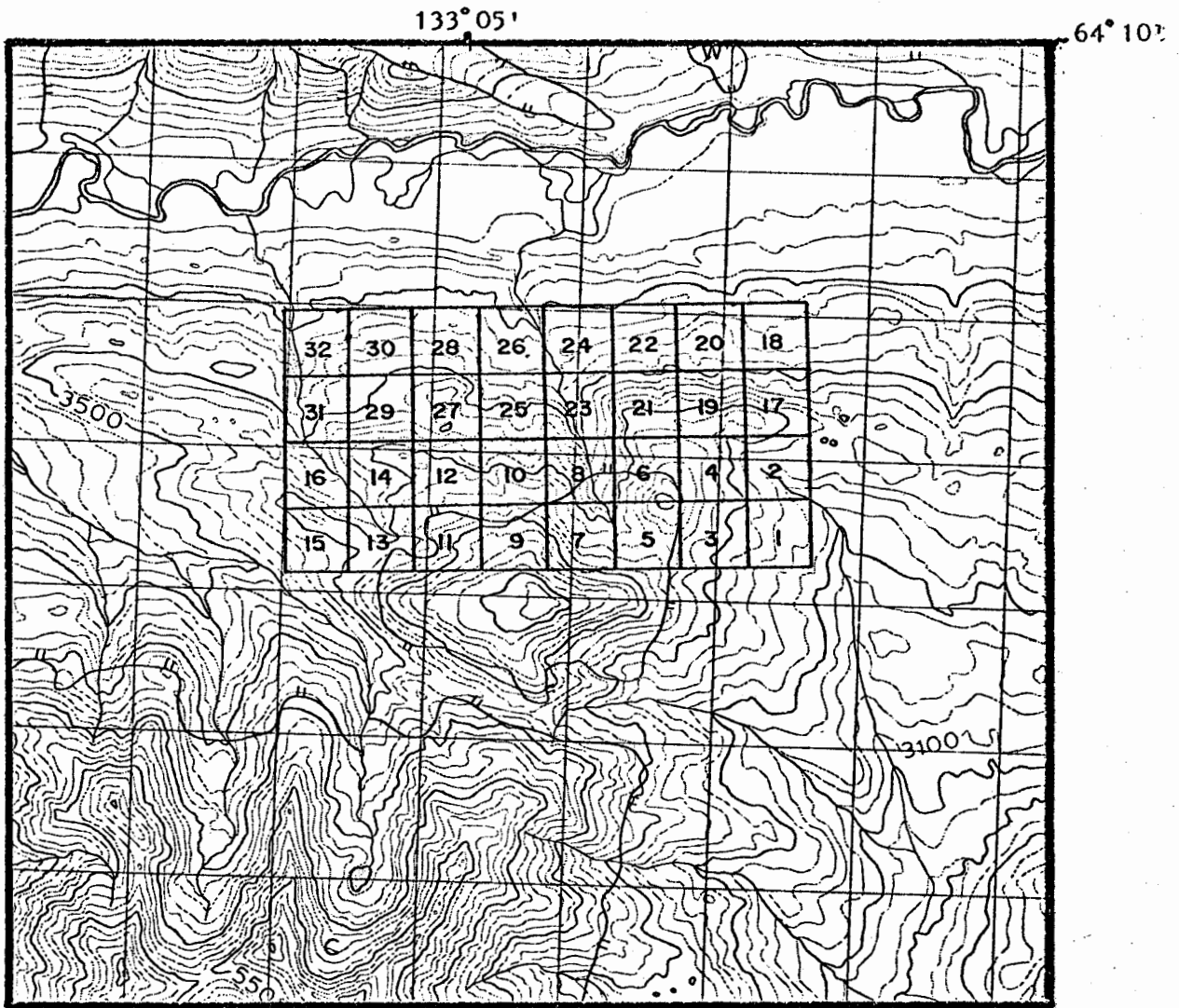


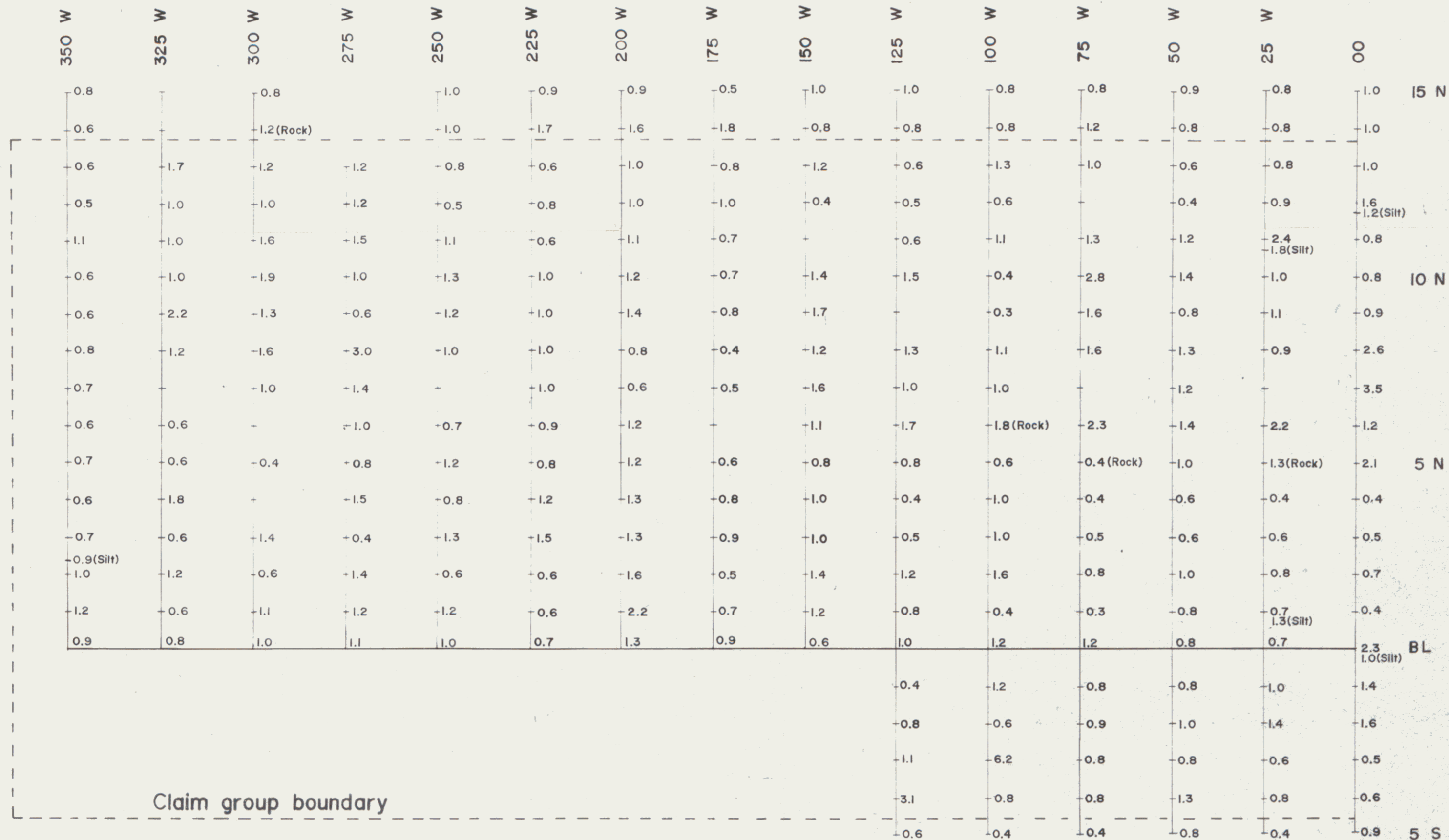
FIGURE 1

CLAIM LOCATION - STAR 1 - 32 CLAIMS

NTS 106C-3

PRISM RESOURCES LIMITED

SCALE: 1 : 50,000

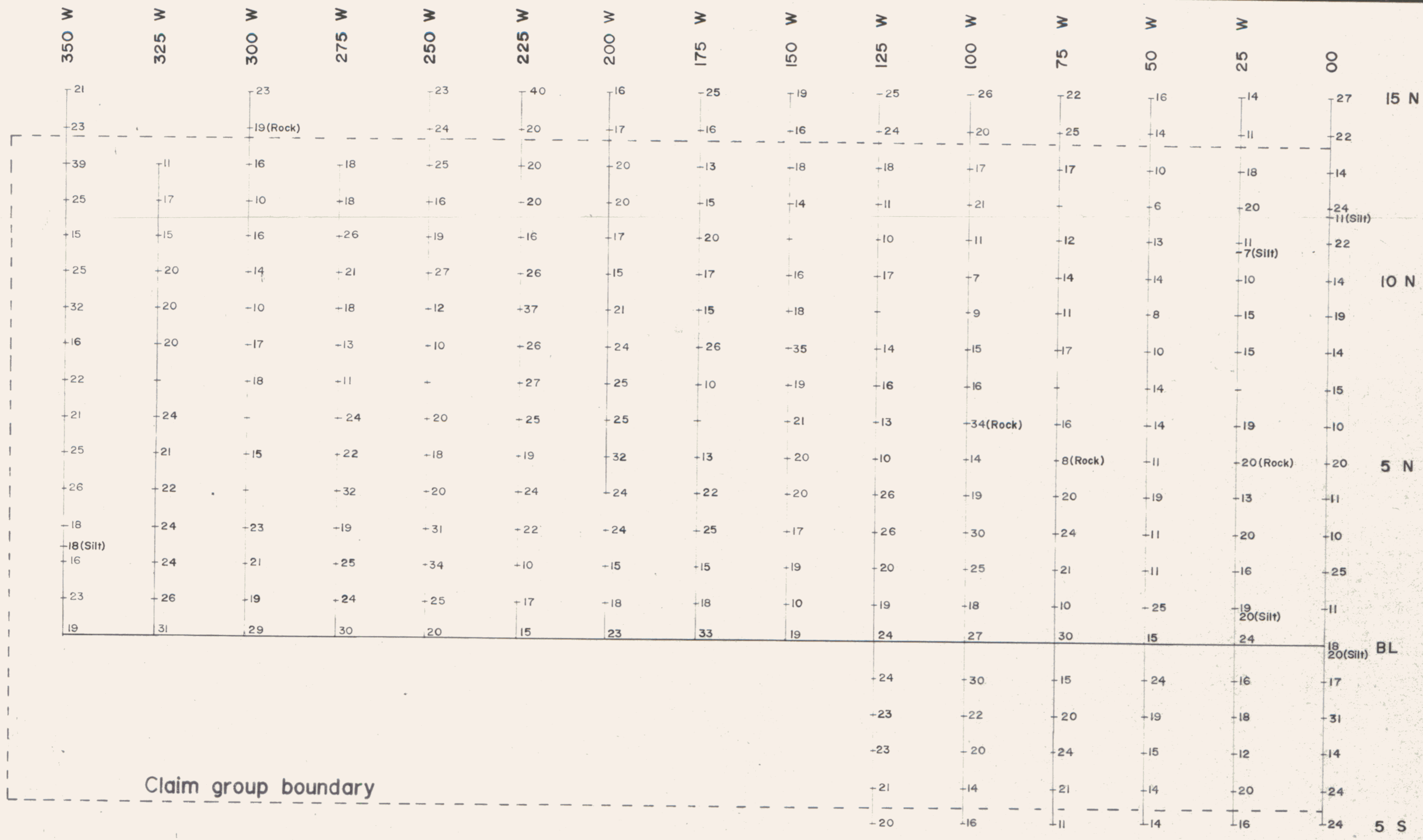


Claim group boundary

PRISM RESOURCES LIMITED  
 STAR 1-32 CLAIMS  
 MAYO MINING DISTRICT NTS 106C-3  
 GEOCHEMICAL PLAN - Ag(ppm)  
 SCALE  
 200 0 400 600  
 metres

Fig. 2A

DRAWN BY: B. DEWONCK DATE: MARCH 15, 1978



Claim group boundary

PRISM RESOURCES LIMITED

**STAR 1-32 CLAIMS**

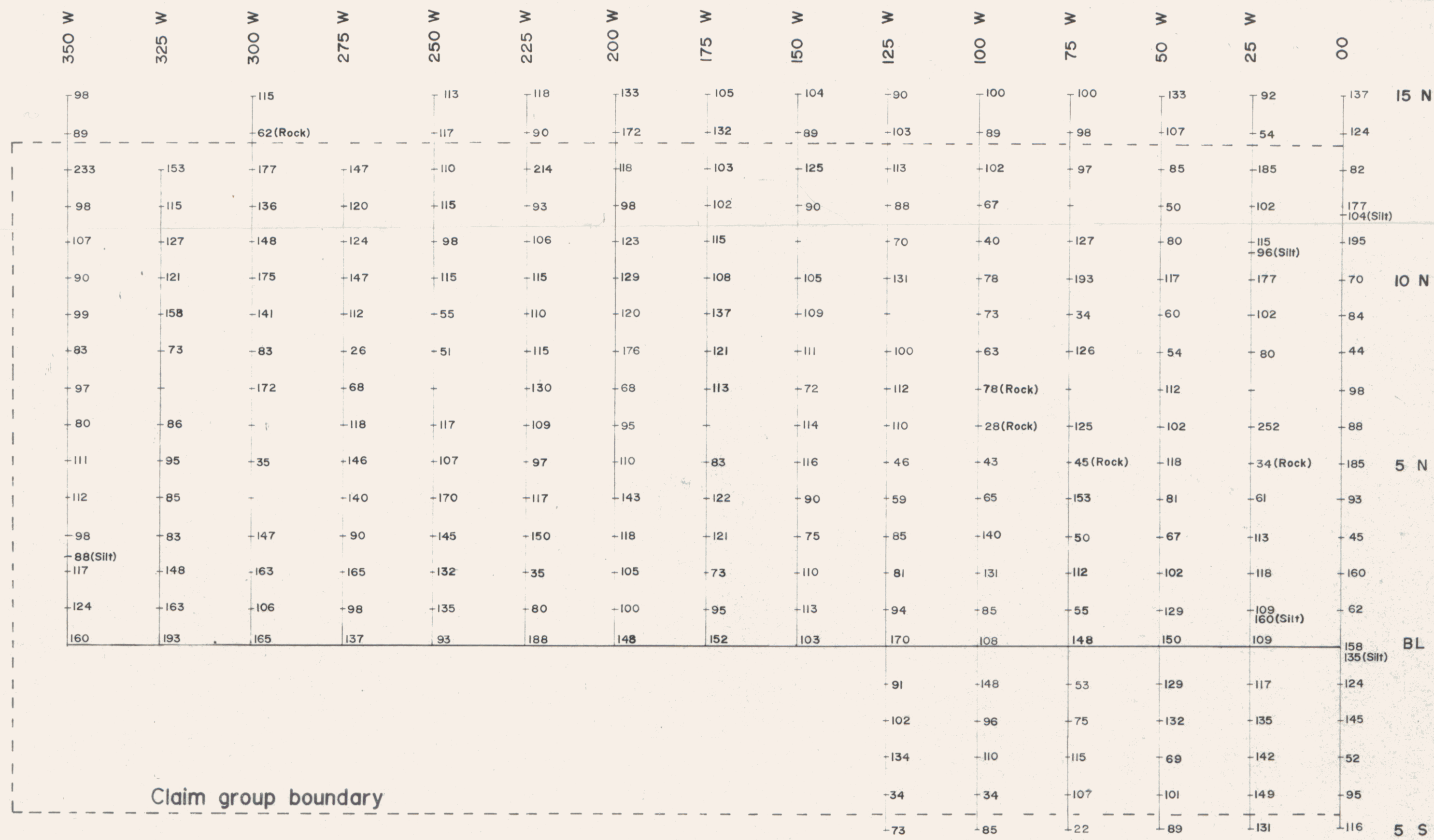
MAYO MINING DISTRICT NTS 106C-3

**GEOCHEMICAL PLAN - Pb(ppm)**

SCALE  
200 0 400 600  
metres

DRAWN BY: B. DEWONCK DATE: MARCH 15, 1978

Fig. 2B



Claim group boundary



PRISM RESOURCES LIMITED

**STAR 1-32 CLAIMS**

MAYO MINING DISTRICT NTS 106C-3

**GEOCHEMICAL PLAN - Zn(ppm)**

SCALE  
200 0 400 600  
metres

DRAWN BY: B. DEWONCK DATE: MARCH 15, 1978

Fig. 2C