

URANGESELLSCHAFT CANADA LIMITED

---

REPORT ON GEOLOGICAL, RADIOMETRIC AND GEOPHYSICAL SURVEYS

---

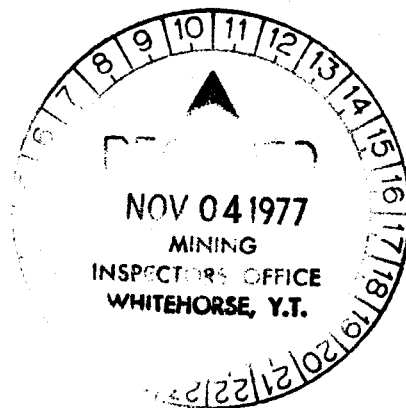
CONDUCTED ON THE

---

TETA GROUP OF CLAIMS  
(YA5259, YA5261 to YA5282)

NTS 116-B-7, Latitude 64°24', Longitude 138°42'

July 5 to August 5, 1977

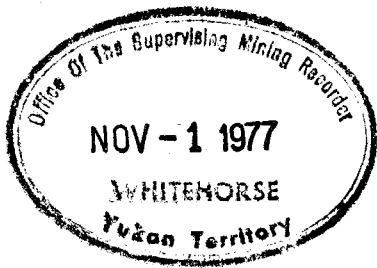


October 1, 1977

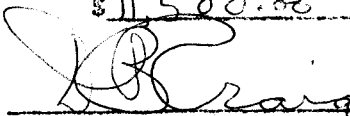
by J. A. Brophy



090261

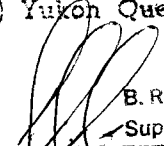


This report has been examined by the Geological Evaluation Unit and is recommended to the Commission to be considered as representation work in the amount of \$1,500.00

  
\_\_\_\_\_

Resident Geologist of  
~~Resident Mining Engineer~~

Considered as representation work under  
Section 53 (4) Yukon Quartz Mining Act.

  
B. R. BAXTER  
Supervising Mining Recorder  
\_\_\_\_\_  
for Commissioner of Yukon Territory

T A B L E   O F   C O N T E N T S

---

|     |   |    |
|-----|---|----|
| i:  | SUMMARY .....                           | 1  |
| ii: | CONCLUSIONS .....                       | 3  |
| 1:  | INTRODUCTION .....                      | 4  |
| 2:  | PROPERTY DESCRIPTION & LOCATION .....   | 4  |
| 3:  | ACCESSIBILITY, CLIMATE .....            | 5  |
| 4:  | PREVIOUS WORK .....                     | 5  |
| 5:  | EXPLORATION PROCEDURE & LOGISTICS ..... | 8  |
| 6:  | GEOLOGY                                 |    |
|     | 6a: Regional Geology .....              | 9  |
|     | 6b: Surficial Geology .....             | 10 |
|     | 6c: Bedrock Geology .....               | 10 |
| 7:  | RADIOMETRIC SURVEYS                     |    |
|     | 7a: Main Grid .....                     | 14 |
|     | 7b: Detailed Grid .....                 | 16 |
|     | 7c: Reconnaissance .....                | 17 |
| 8:  | GEOCHEMISTRY, SPECTROMETRY              |    |
|     | 8a: Main Grid .....                     | 18 |
|     | 8b: Detailed Grid .....                 | 19 |
|     | 8c: Reconnaissance .....                | 21 |
| 9:  | GEOPHYSICAL SURVEYS                     |    |
|     | 9a: Magnetometer Survey .....           | 21 |
|     | 9b: Electromagnetometer Survey .....    | 22 |
| 10: | STATEMENT OF COSTS .....                | 22 |

## A P P E N D I C E S

---

~~APPENDIX 1 : PROJECT PERSONNEL~~

APPENDIX 2 : INSTRUMENT SPECIFICATIONS

APPENDIX 3 : GEOCHEMICAL DETERMINATIONS

~~APPENDIX 4 : DETAILS OF EXPENDITURES~~

~~APPENDIX 5 : QUALIFICATIONS OF AUTHOR~~

## F I G U R E S   &   T A B L E S

---

|            |  |         |
|------------|--|---------|
| FIGURE 1 : | LOCATION OF TETA CLAIMS                | page 6  |
| FIGURE 2 : | GENERAL LOCATION & ACCESS, TETA CLAIMS | page 7  |
| FIGURE 3 : | REGIONAL GEOLOGY                       | page 10 |
| FIGURE 4 : | EQUIV. VS. GEOCHEM. DETERMINATIONS     | page 20 |
| TABLE 1 :  | TABLE OF FORMATIONS                    | page 11 |

## D R A W I N G S

---

| <u>Dwg.#</u> | <u>----- Title -----</u>  | <u>scale</u> |
|--------------|---|--------------|
| 1            | Location of Grids   | 1"=800'      |
| 2            | Surficial Geology   | 1"=800'      |
| 3            | Bedrock Geology   | 1"=800'      |
| 4            | Main Grid: Scint. & Spectrometer Surveys,<br>Rock Geochemistry & Surficial Geology  | 1"=200'      |
| 5            | Detailed Grid: Scint. & Spectrom. Surveys,<br>Rock Geochemistry & Surficial Geology | 1"=100'      |
| 6            | Reconnaissance Scintillometry & Spectrometry  | 1"=800'      |
| 7            | Magnetometer Survey, Detailed Grid  | 1"=100'      |
| 8            | Electromagnetometer Survey, Detailed Grid   | 1"=100'      |

i: SUMMARY

A uranium exploration program was conducted over the Teta group of 23 claims on the Tombstone River map sheet (NTS 116-B-7), approximately 32 miles (50 km) NE of Dawson City in west-central Yukon Territory. The property, which is held by Urangesellschaft Canada Limited, was investigated between July 5 and August 5, 1977.

The claims lie in a SSW portion of the Tombstone Stock, an alkali syenite body of Middle Cretaceous age.

Work consisting of geological mapping and scintillometer surveys led to the discovery of a number of small, mildly radioactive zones invariably associated with magnetiferous porphyritic syenite. These anomalies, which seldom exceed three times background, are characterized by a low uranium to thorium ratio.

Point radioactive anomalies were occasionally observed at the contacts between the syenite and inclusions of older rock.

A sample from a felsite(?) dike contained 1.0 lbs U per ton, but the dike was small and the enrichment is not pervasive.

In glacial moraine, scattered boulders of radioactive trachyte porphyry(?) were found which contained 1.0 to 7.9 lbs U per ton and negligible thorium.

A significant radioactive zone was found in talus scree comprised predominantly of sheared and possibly silicified trachyte porphyry(?). Radioactive boulders registering 2 to >20 times background were found over an area measuring 300' x 800' (90 m x 240 m). Geochemical analyses of 8 samples returned uranium values of 4 to 120 lbs per ton. The average U/Th ratio is

30 to 1. Significant molybdenite (0.3%) was found in one highly radioactive sample. Upslope from the scree pile at the height of land, one sheared outcrop measuring 30' x 40' (9 m x 12m) and registering 2 to 10 times background was found. A sample of highest gamma emission was found to contain 1.26 lbs U per ton.

A magnetometer and electromagnetometer survey were conducted across the zone of anomalous scree. An intermediate magnetic high correlates well with the radioactive zone, but no electromagnetic response was evident.

ii: CONCLUSIONS

The most significant radioactivity on the property is associated with sheared and possibly silicified trachyte porphyry(?). Since no major tectonic events are recognized after the Middle Cretaceous in this region, it is assumed that the shearing is contemporaneous with the emplacement of the Tombstone Stock. The shears may have acted as a conduit for late stage magmatic fluids. The ubiquity of fluorite suggests that the uranium may have been carried in a fluoride complex. The precipitation mechanism is not understood, but pervasive silicification(?) suggests that metasomatic processes might have been responsible for the uranium enrichment. Field evidence points to a late stage comagmatic origin for the uranium mineralization.

1: INTRODUCTION

A uranium exploration program was conducted by Urangesellschaft Canada Ltd. (UG Canada) between July 5 and August 5, 1977, over the Teta group of 23 claims in the Tombstone area of the Yukon. The claims were staked in August of the previous year on the basis of an airborne radiometric anomaly obtained over the property during reconnaissance surveys conducted across the Yukon in 1976.

The various surveys conducted include grid scintillometer surveys, geological mapping of bedrock and surficial deposits, spectrometer surveys, reconnaissance scintillometry, magnetometer surveys, electromagnetometer surveys, and rock sampling.

The results of the work are detailed in this report.

2: PROPERTY, DESCRIPTION AND LOCATION

The Teta group of claims are contiguous and consist of 18 full-sized and 5 fractional claims with tag numbers YA5259 and YA5261 to 5282 inclusive. The claims have been grouped together for work under authority of Grouping Certificate Numbers Q538 and Q539. The claims, which are listed below, are wholly owned by Urangesellschaft Canada Ltd. with principle offices at 3100 - 2 Bloor Street East, Toronto, Ontario.

| <u>Claim</u> | <u>Tag #</u> | <u>Claim</u> | <u>Tag #</u> | <u>Claim</u> | <u>Tag #</u> |
|--------------|--------------|--------------|--------------|--------------|--------------|
| *Teta 1      | YA5259       | Teta 10      | YA5268       | Teta 17      | YA5275       |
| *Teta 3      | YA5261       | Teta 11      | YA5269       | Teta 18      | YA5276       |
| Teta 4       | YA5262       | Teta 12      | YA5270       | Teta 19      | YA5277       |
| Teta 5       | YA5263       | Teta 13      | YA5271       | Teta 20      | YA5278       |
| *Teta 6      | YA5264       | Teta 14      | YA5272       | Teta 21      | YA5279       |
| *Teta 7      | YA5265       | Teta 15      | YA5273       | Teta 22      | YA5280       |
| *Teta 8      | YA5266       | Teta 16      | YA5274       | Teta 23      | YA5281       |
| Teta 9       | YA5267       |              |              | Teta 24      | YA5282       |

\*) fractional claims

The claims (refer to Fig.1) are located at latitude  $64^{\circ}24'$ , longitude  $138^{\circ}42'$  on the Tombstone River map sheet (NTS 116-B-7) in the southern Ogilvie Mountains. The claims lie entirely above the tree line between elevations 4000 and 7100 feet (1200 to 2150 m).

The dominant feature within the claim group is a cirque within which surficial deposits including glacial moraine, scree, and boulder glaciers predominate. Outcrop within the cirque is scarce. The walls of the cirque are generally precipitous owing to the joint-controlled, vertical weathering characteristics of the syenite. Typically, the walls terminate in sharp-crested, serrate ridges.

### 3: ACCESSIBILITY, CLIMATE

The Teta claims are accessible by helicopter from Dawson City, 32 miles (50 km) southwest of the property. Dawson City, with a population of 800, is a base for a Jet Ranger 206B helicopter operated by Trans North Turbo Airlines.

The Dempster Highway passes within 12.5 miles (20 km) of the claim group. The east-northeast trending Tombstone River valley, which lies immediately north of the property, meets the Dempster Highway within 16 miles (25 km) of the claim group. The moderate grade (avg. 4 to 5%) of this broad valley would make it the logical access corridor from the Dempster Highway to the claim group in the event of future development. General access to the property is illustrated in Figure 2.

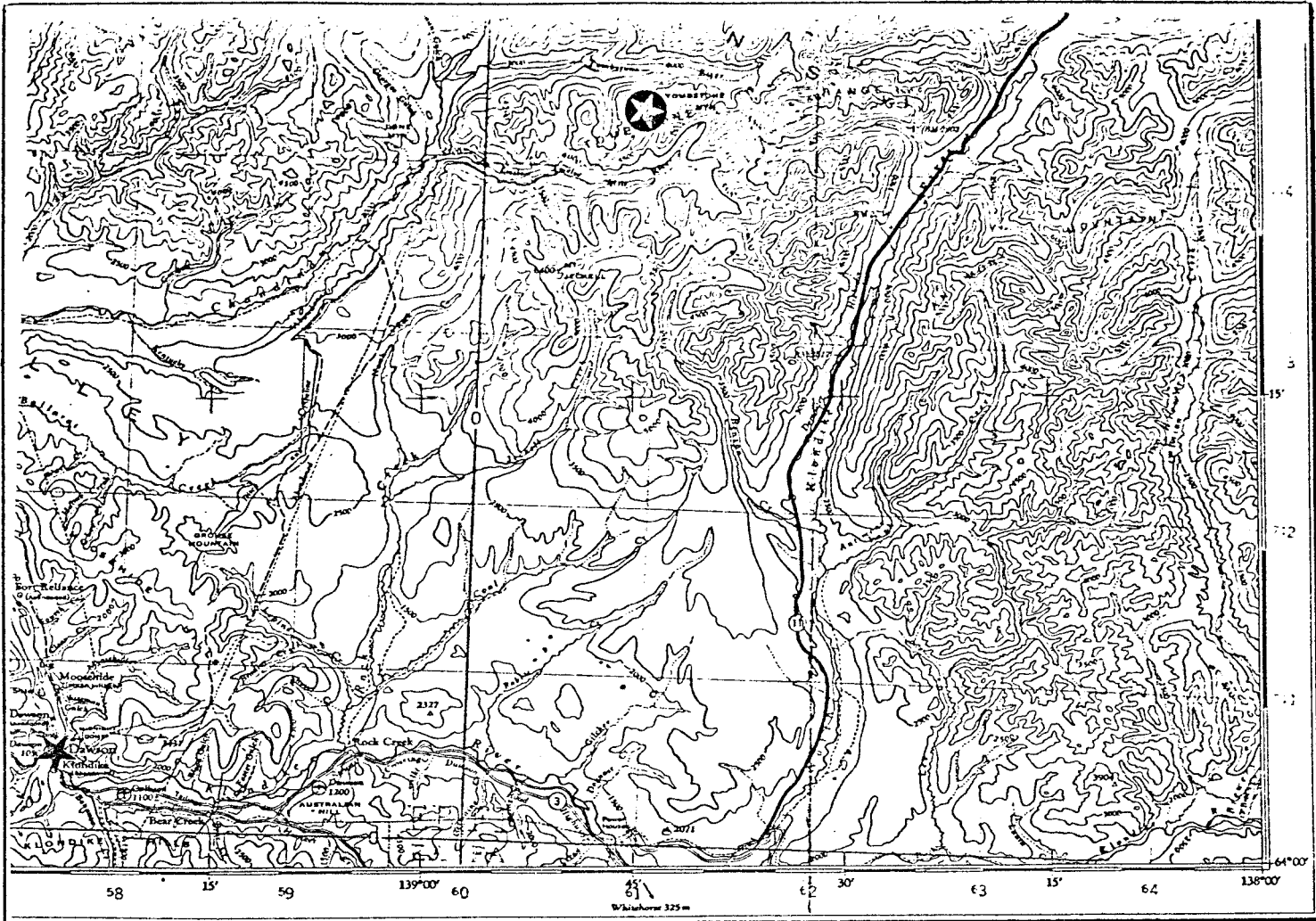
### 4: PREVIOUS WORK

The Tombstone area was mapped as a part of a large scale mapping project undertaken by the Geological Survey of Canada in 1962. Results of this project, known as "Operation Ogilvie" were published as GSC Memoir 364.\*

---

\*) Green L.H. : "Geology of the Nash Creek, Larsen Creek, and Dawson Map-Areas, Yukon Territory", GSC Memoir 364, 1970 (2nd edition)





DAWSON  
YUKON TERRITORY



-  TETA Claim Group
-  Dawson City
-  Dempster Highway



FIGURE 2: GENERAL LOCATION AND ACCESS, TETA CLAIMS

Detailed mapping of the Tombstone area was conducted by D.J. Tempelman-Kluit and published as GSC Bulletin 180.\*

On the property itself, very old claim posts and a trench were observed, but no assessment could be found to document this previous work. No significant mineralization was observed in the trench and no other signs of previous development were encountered.

#### 5: EXPLORATION PROCEDURE AND LOGISTICS

Exploration on the Teta claims proceeded as follows:

- i: A 5200 foot baseline was chained along the length of the cirque where an airborne radiometric anomaly was located in 1976. The baseline was marked with monofilament and flagged at 100 foot intervals.
- ii: The grid was completed by establishing pace and compass crosslines at 400 foot intervals along the baseline. Crosslines generally end at the scree-outcrop interface where further access by foot is not possible. The location of this main grid is shown in Drawing 1.
- iii: A scintillometer survey was conducted along the grid. Total count readings were recorded at 50 foot intervals.
- iv: Geological mapping of bedrock and surficial deposits was conducted both on the grid and elsewhere for complete coverage of the claim group. Scintillometers were carried at all times. Readings exceeding 1000 cps (twice background) were recorded.

---

\*) Tempelman-Kluit, D.J.: "Stratigraphy and Structure of the 'Keno Hill Quartzite' in Tombstone River-Upper Klondike River map-areas, Yukon Territory", GSC Bulletin 180, 1972

- v: A detailed grid was established over a zone of supranormal radioactivity. Scintillometer, magnetometer and electromagnetometer surveys were conducted along the detailed grid. Readings were recorded at 50 foot or 100 foot intervals. The location of this detailed grid is shown on Drawing 1.
  
- vi: Spectrometer surveys were conducted along the baseline, within the detailed grid, and at other select localities.
  
- vii: Select samples were expedited to Bondar & Clegg for geochemical analysis. The results of these geochemical determinations are reported elsewhere in this text.

Pacing, compass resections and altimeters were used for ground control. A helicopter was chartered on a casual basis to transport personnel to inaccessible portions of the claim group. Camp provisions were purchased from the DCW General Store in Dawson City and delivered by helicopter.

The specifications of the various instruments used for the surveys are listed in Appendix 2.

## 6: GEOLOGY

### 6a: Regional Geology

The Teta claims are situated on the southwest rim of the Tombstone Stock, an alkali syenite intrusion of Middle Cretaceous age. The stock is intrusive through a northeast trending belt of Mesozoic sediments and volcanics dominated by a Lower Cretaceous succession of orthoquartzites known as the "Keno Hill Quartzite." Diabase and gabbro sills are commonly found in the region and are thought to represent one sill tectonically repeated by folding and thrust faulting which occurred prior to the emplacement of the pluton. The regional geological setting is illustrated in Figure 3.

# LEGEND












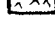
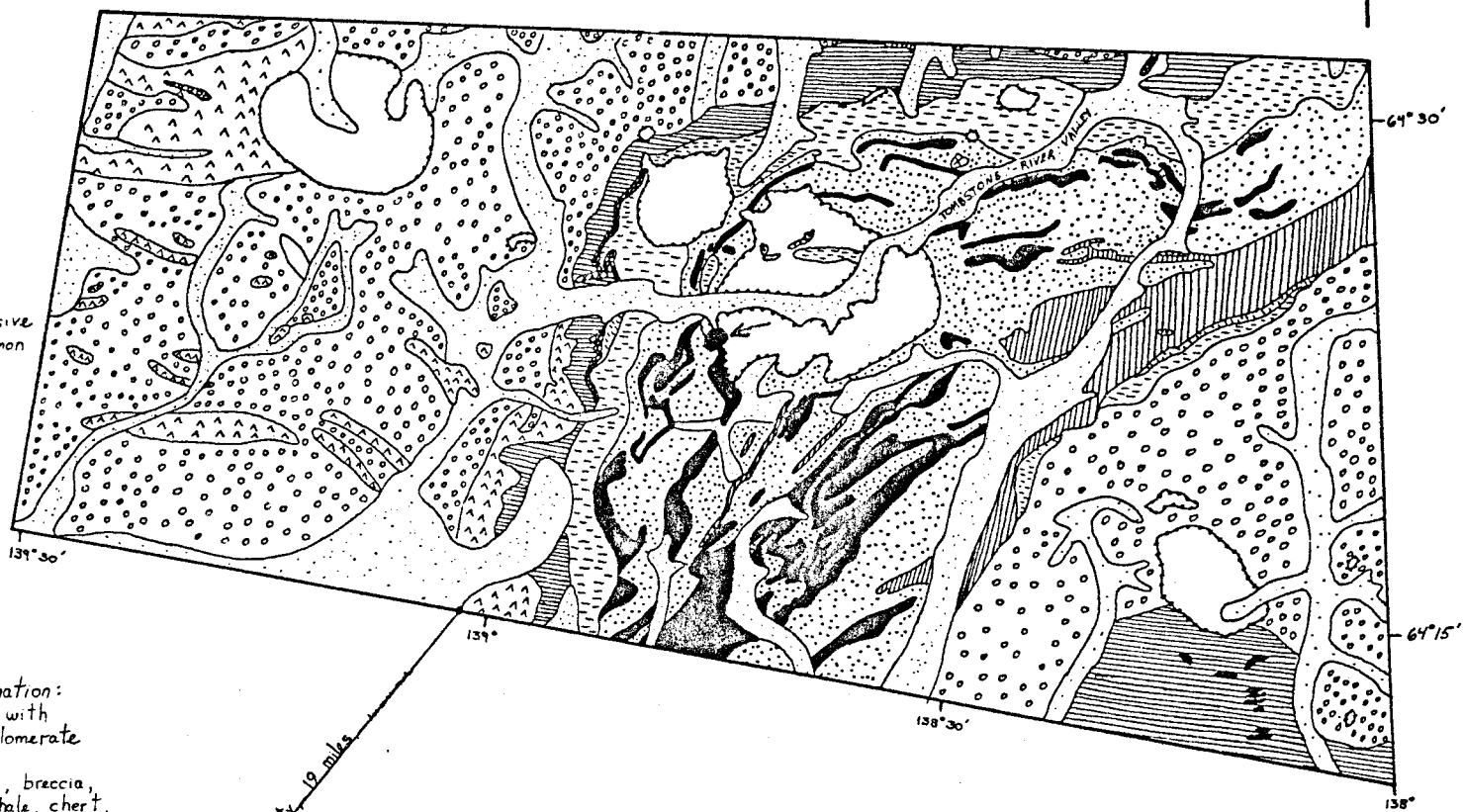
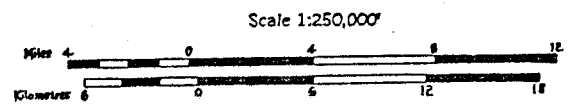
-  Quaternary: Unconsolidated glacial and fluvial deposits
-  Cretaceous: Medium grained to porphyritic hornblende / hornblende / biotite syenite
-  Cretaceous: Biotite-granodiorite and biotite-quartz monzonite
-  Mesozoic: Diorite and Gabbro
-  Mesozoic: Shale and thin bedded siltstone, commonly limy
-  Mesozoic: Keno Hill Quartzite: massive quartzite, minor slate and phyllite, common graphitic, argillaceous quartzite
-  Jurassic: Lower Schist division: predominantly dark grey argillite, slate, and phyllite
-  Permian: Limestone with some chert
-  Triassic: Platy, black limy shale and limestone
-  Ordovician / Silurian: Road River Formation: mainly black chert and black argillite with minor quartzite and quartz pebble conglomerate
-  Precambrian / or later: volcanic rocks, breccia, tuff, agglomerate; minor interbedded shale, chert, siltstone, and sandstone
-  Precambrian / or Cambrian: Mainly gritty quartzite, sandstone, and quartz pebble conglomerate; also shale, slate, schistose quartzite, quartz-chlorite schist, quartz-mica schist and phyllite, minor limestone and black chert

Figure 3



Dawson City, 19 miles

● TETA CLAIM GROUP



|                                     |       |            |
|-------------------------------------|-------|------------|
| URANGESELLSCHAFT CANADA LIMITED     |       |            |
| PROJECT: K14, 1.7                   |       |            |
| Regional Geology,<br>Tombstone Area |       |            |
| DWG. NO.                            | SCALE | DRAWN BY   |
| N.Y.S. 116 87                       | DATE: | CHECKED BY |

6b: Surficial Geology

The surficial deposits within the claim group are shown on Drawing 2 which is a compilation of data from ground work and air photo interpretation. Scree, moraine, and boulder glaciers are the dominant surficial features. All the deposits are seen to consist of angular to sub-angular boulders of extremely variable size. The largest boulder exceeds 500 cubic feet, but the average size range is probably between 0.5 and 3.0 cubic feet. The overall sorting is poor, but increases from boulder glaciers to scree to moraine. Moraine from alpine glaciation is the dominant surficial deposit. Morainic boulders are better sorted and less angular than the other surficial deposits.

Syenite boulders tend to be sub-equant, but boulders of quartzite and trachyte porphyry(?) are generally slabby.

Moraine may achieve depths of up to 100 feet near the back wall of the cirque.\* Boulder glaciers do not appear to be thicker than 50 feet. Depth of scree is probably never more than 15 feet.

During exploration, particular attention was paid to anomalies found in scree since this is the most source specific of the various surficial deposits.

6c: Bedrock Geology

A geological map of the Teta claim group is shown on Drawing 3. A Table of Formations is presented in Table 1.

The southwest perimeter of the property consists predominantly of dark grey, fine-grained, orthoquartzite, unit 1a (Unit 13 of D.J. Tempelman-Kluit, Lower Cretaceous Keno Hill Quartzite). The quartzite is massive

---

\*) Personal communication, Dr. O. Hughes, GSC

TABLE OF FORMATIONS

| ERA                           | PERIOD                          | UNIT | LITHOLOGY  | THICKNESS |
|-------------------------------|---------------------------------|------|--|-----------|
| PALEOZOIC (?)<br>——— MESOZOIC | Middle Cretaceous               | 2a   | medium to dark grey, aphanatic, trachyte porphyry(?)   |           |
|                               | Middle Cretaceous               | 2b   | dominantly coarse-grained pink to grey porphyritic syenite   |           |
|                               | Lower Cretaceous                | 1a   | massive grey orthoquartzite, fine-grained, common coaly black slate  | * 1800'   |
|                               | Middle Cretaceous to Ordovician | 1b   | hybrid rocks, syenite and gossaned syenite with inclusions of grey and gossaned quartzite, calc silicate skarn, chert, inclusions from older units (Keno Hill Quartzite, Tahkandit and Road River Formations?) |           |

\*) after D.J. Tempelman - Kluit, GSC Bulletin 180

with most beds having a thickness of 6 to 10 feet. Occasionally, coaly black slate is intercalated with the quartzites. The bedding, which trends NE and dips moderately south, is truncated to the north by the Tombstone Stock. In the immediate vicinity of the intrusion, the quartzite is bleached white.

The remainder of the property is underlain by the intrusion and related rocks. The intrusive consists predominantly of coarse-grained to medium-grained, pink and grey porphyritic syenite. Pegmatitic and aphanitic syenite can be found locally. A representative syenite would contain 60 to 80% orthoclase, 5 to 20% plagioclase, 5 to 20% pyroxene, and subordinate hornblende(?). Magnetite and fluorite are commonly found as accessory minerals.

Subhedral, thick, tabular orthoclase phenocrysts often constitute the bulk of the rock. Commonly an alignment of the phenocrysts is observed. Plagioclase and pyroxene occur interstitially to the orthoclase, being respectively subhedral and anhedral.

Structural elements in the syenite consist of joints trending  $120^{\circ}$  to  $150^{\circ}$  dipping steeply west to vertically and joints trending  $10^{\circ}$  to  $50^{\circ}$  dipping vertically to sub-vertically. Weathering tends to form steep cliffs as a result of this jointing. The syenite is designated as unit 2b on Drawing 3 (Unit 18 of D.J. Tempelman-Kluit, Middle Cretaceous syenite). Commonly rafts of orthoquartzite and small gossan zones are found within the syenite, particularly near the contact, but these are of insufficient size to indicate on the geological map. The rafts have sharp contacts and exhibit little assimilation.

Enclosed by the syenite are two other extensive mappable units. A large zone of hybrid rocks extends from the south-central to the northwest extremity of the property, although some of this is interpreted beneath

overburden. This zone (Unit 1a on Drawing 3) is characterized by a variety of rocks, most of which are moderately to highly gossaned and sometimes contain up to 10% pyrite. The mixture consists dominantly of quartzite which resembles unit 1b but is invariably oxidized and pyritiferous. Calc silicate skarn and altered syenite comprise an appreciable portion of the zone and are commonly pyritiferous. Cherty and fine-grained siliceous rocks are also found. The zone is interpreted to represent inclusions of older units brought up by the intrusive. Although Lower Cretaceous quartzites are certainly represented, older units from the Takhandit and Road River Formations may also have contributed to the hybrid zone. The contact between the hybrid zone and the syenite is gradational and somewhat arbitrary.

The last and most important unit on the property as a host for appreciable uranium mineralization is unit 2a, interpreted in the field to be a trachyte porphyry(?). It forms a band, interpreted to be continuous through overburden, along the northeast edge of the property over a length of 6000 feet (1800 m) and across a width of 1500 feet (45 m). North-northwest trending shears dipping sub-vertically east and west are pervasive through this unit, although massive varieties can be found. The rock, which has been observed in sharp and gradational contact with the syenite, consists of a dark to medium grey, aphanitic groundmass with a variable content (5 to 50%) of white phenocrysts (orthoclase?). The phenocrysts can be subhedral and rounded, but more commonly they are subhedral to euhedral and tabular. Invariably the phenocrysts are aligned in a direction paralleling the shears. Where shearing is most intense, the phenocrysts are flattened and attenuated, often to the extent that a gneissic fabric is imparted to the rock. Fluorite and magnetite are commonly found as accessory minerals. The unit is interpreted to be a hypabyssal equivalent of the syenite which was sheared as a result of the emplacement of the pluton. Hydrothermal activity may be evidenced by pervasive silicification(?) and by uranium mineralization. The uranium mineralization will be discussed in a subsequent section.

The southern extremity of the trachyte porphyry unit has not been determined. It has been mapped to the edge of the property boundary and probably continues. To the north, the unit has been traced to the height of land where a precipitous north facing cliff prevented further access. On this north face, resistant ridges of syenite could be seen overlying the trachyte. These ridges could represent the erosional remnants of syenite and might signify the northern termination of the trachyte unit.

A N-S trending felsite(?) dike was located in a southeast portion of the property. It has been traced over a strike length of 150 feet and is 3 feet wide. It is somewhat radioactive and contains appreciable sulfides, mostly pyrite.

The above descriptions are based on megascopic examination of the rocks, as thin sections were not available at the time of this writing. It is possible that the trachyte porphyry unit earlier discussed may be equivalent to D.J. Tempelman-Kluit's Unit 18a, pseudoleucite tinguaitite.

## 7: RADIOMETRIC SURVEYS

### 7a: Main Grid

Drawing 4 shows the results of the scintillometer survey conducted on the main grid. Surficial deposits are also shown. Scintillometer readings were recorded at 50 foot intervals with the detecting crystal held 15 to 20 cm above the source. Scintillometer values are reported in counts per second (cps). Since crosslines were not surveyed, the grid shown on Drawing 4 is somewhat idealized. The accurate location of the grid is shown on Drawing 1.

Background radiation varies from 120 cps in terrain dominated by quartzites, 400 cps over hybrid rocks, and 500 to 600 cps over syenite and trachyte. Most of the survey was conducted along slopes or in valleys covered by boulders so that the influence of mass effects may have been considerable.

Background radiation over outcrop at the height of land was often up to 100 cps less than that recorded in the valley. Consequently, the designation of 500 cps as background radiation is somewhat arbitrary. All radiation exceeding twice background ( $\geq 1000$  cps) was considered to be anomalous. All anomalies encountered within or close to the grid are shown on the map, regardless of whether they occurred at a station. The approximate dimensions of all anomalies of areal extent ( $> 2.3 \text{ m}^2$ ,  $> 25 \text{ ft.}^2$ ) are shown along with the value of the highest gamma emission obtained over the anomaly. Spot radioactive highs ( $< 2.3 \text{ m}^2$ ,  $< 25 \text{ ft.}^2$ ) in outcrop and overburden are indicated by an "X" and the value of the highest gamma emission.

Geochemical and spectrometer data shown on the drawing will be discussed in the next section.

In the NE quadrant of the grid, scattered anomalies are found in syenite scree and outcrop. These anomalies rarely exceed three times background. The largest anomalous zone is found west of line 52N and measures approximately 200' x 15' (60 m x 3.6 m). The zone trends N-S and is associated with magnetiferous porphyritic syenite.

Between lines 24E and 48E, generally within 400' (120 m) of the baseline, 23 anomalous boulders of trachyte porphyry(?) were located in glacial moraine. Two of these contained radioactivity above the detection limit of the scintillometer ( $> 10,000$  cps). Since moraine is not source specific, the exact origin of these boulders is problematic. Presumably, they were derived from the back wall of the cirque which is outside of the UG property boundary. They may also have been plucked from outcrop on the valley floor which subsequently was covered by overburden.

Between lines 12E and 16E, 1N to 4S, four more boulders of anomalous trachyte porphyry(?) were found in moraine. One of these was exceptionally large (60 cubic feet) and registered from 4000 to greater than 10,000 cps. A further isolated boulder of anomalous trachyte porphyry(?) was found on line 4E, 4+25N.

Some scattered anomalies were found in syenite scree in a southeast portion of the grid.

The felsite dike near line 52S was found to be radioactive throughout its length, registering from 800 to 1500 cps.

A significant string of anomalies in boulders of trachyte porphyry were encountered in scree on line 28E between stations 12N and 16N. The scree being source specific, a detailed grid was established in this area for further investigations.

#### 7b: Detailed Grid

Using line 28E for control, crosslines paralleling the baseline were established at 200 foot intervals between 10N and 18N. The grid was established exclusively over scree. South of the detailed grid, glacial moraine predominates. Crosslines were driven east until syenite scree predominated over trachyte scree, and west until it was assured that background radiation only was encountered.

Drawing 5 shows the results of the grid scintillometer survey. Anomalies located between lines are also shown. The height of land, which is also indicated, was prospected. One anomalous outcrop area was found which measured approximately 30' x 40' of >1000 cps. The outcrop consists of sheared and possibly silicified trachyte porphyry(?). A portion of the outcrop is oxidized, and highest gamma emission (up to 5000 cps) is associated with this gossaned zone. The outcrop disappears to the south beneath overburden and to the north over a precipitous cliff which could not be effectively prospected.

The scintillometer survey has delineated a zone downslope from the radioactive outcrop in which boulders are commonly found with radiation exceeding the detection limit of the scintillometer ( 10,000 cps). Within

the scree pile, the zone measures 800' x 300' (240 m x 90 m). The zone is located between elevations 4900' and 5300' on a slope with a 40% grade.

Many of the samples found in scree are significantly more radioactive than the outcrop at the height of land. Moreover, the most radioactive samples are unoxidized and sometimes contain visible molybdenite, suggesting an alternative richer source than is represented by the outcrop.

The radioactive boulders vary considerably in size. The smallest (6300 cps) was fist-sized and the largest was perhaps 0.5 cubic metres. Yellow uranium stains were often visible on shear surfaces.

From the height of land, ridges of syenite could be seen overlying the trachyte on the steep north face. These might represent erosional remnants of syenite and could signify the northern extremity of the trachyte unit.

#### 7c: Reconnaissance

Outside of the area covered by the grids, little radioactivity was encountered. This is in part due to the fact that the quartzite on the property is not radioactive. Also, although traverses were conducted at the height of land, much of the rock was inaccessible due to the precipitous nature of the terrain.

Drawing 6 shows the locations of anomalies encountered during the course of reconnaissance investigations. In the south part of the claim group, anomalies are associated with the contacts between syenite and inclusions of quartzite. In the northeast portion of the claim group, anomalous radioactivity is found in porphyritic syenite.

8: GEOCHEMISTRY, SPECTROMETRY

The results of geochemical analyses and spectrometer equivalent assays are shown on the various radiometric maps, Drawings 4 to 6. Thirty five samples from outcrop (sample number prefixed by OC) and overburden (sample numbers prefixed by OB) were expedited to Bondar & Clegg for analysis of uranium. Some samples were also analyzed for thorium and a few for Cu, Mo, Au and Ag. Geochemical determinations for uranium and thorium are reported in pounds per ton. Base metals are reported in percent and precious metals in ounces per ton. Except for 3 samples from the felsite dike, all other analyses are from samples of trachyte porphyry(?). Results of geochemical determinations are listed in Appendix 3.

Spectrometer readings have been stripped and are reported as pounds eU (equivalent uranium) and pounds eTh (equivalent thorium) per ton.

8a: Main Grid, (Drawing 4)

Seven rock samples of trachyte porphyry(?) from morainic boulders contained from 1.0 to 7.9 lbs U per ton. A sample analyzed for uranium and thorium contained a U/Th ratio of 47 to 1. Two of these samples were analyzed for gold and were found to contain  $1.12 \times 10^{-3}$  and  $2.08 \times 10^{-3}$  ounces Au per ton. Although these may not be economically significant values, they are 7 to 15 times higher than the average gold content of granitoid rocks.

Spectrometer readings were recorded along the baseline at 400 foot intervals between lines 12E and 52E. The purpose of this survey was to check the average uranium and thorium content of background rocks. Equivalent assays show that thorium is always more abundant than uranium. The average equivalent assay for all readings along the baseline was 0.08 lbs eU per ton and 0.15 lbs eTh per ton.

A spectrometer traverse was conducted across the radioactive zone of porphyritic syenite near line 52E, 8N. The zone measures 200' x 15' (60 m x 3.6 m). Spectrometer readings were recorded at 5 foot (1.5 m) intervals across the width of the zone. Results of 5 readings indicate an average of 0.16 lbs eU per ton and 0.53 lbs eTh per ton.

Three samples from the felsite dike were analyzed for U, Mo, Cu, Au and Ag. One select sample contained 1.0 lbs U per ton, but other values of 0.18 and 0.14 lbs U per ton are considered to be more representative of the dike as a whole. Significant (0.09%) molybdenite was found in one sample. Insignificant quantities of the other elements were detected.

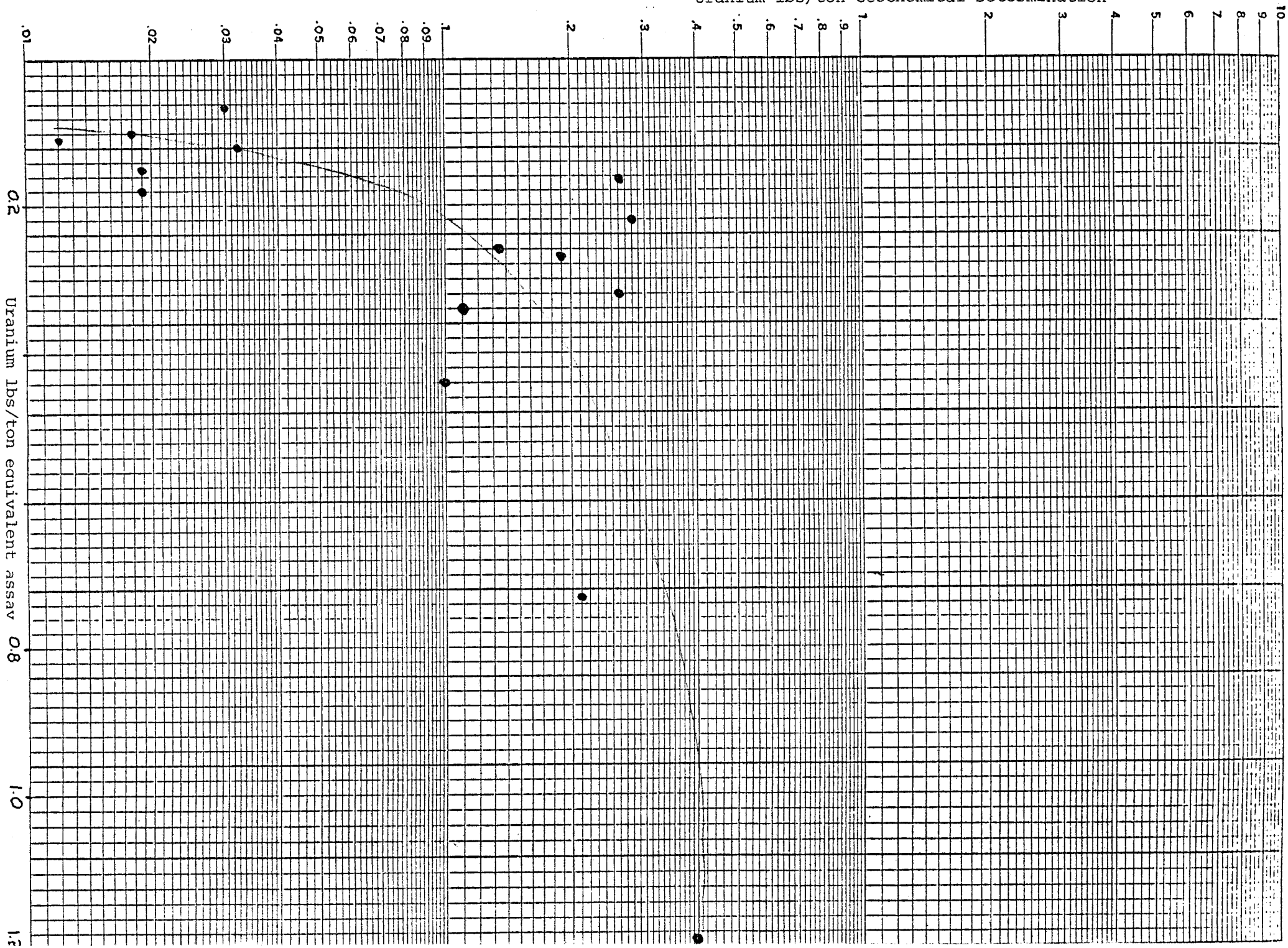
8b: Detailed Grid (Drawing 5)

Rock samples were collected at 15 spectrometer stations along the cliff face north of the height of land in order to test the correlation between geochemical determinations and equivalent assays. Figure 4 shows that the correlation is poor, the equivalent assays being generally greater than the geochemical determinations. The spectrometer stations were essentially along a vertical face, and consequently mass effects may have exaggerated the spectrometer response. However, the sometimes extreme difference between the two determinations is difficult to attribute solely to mass effects, and disequilibrium between uranium and her daughter products is proposed to explain this phenomena.

Two select samples of high gamma emission from the radioactive outcrop were analyzed for uranium. These were found to contain 1.26 and 0.90 lbs U per ton. The former sample contained 0.05 lbs Th per ton for a U/Th ratio of 25 to 1. The latter sample was thought to have contained gold, but the analysis revealed less than  $1.6 \times 10^{-4}$  oz Au per ton.

Eight overburden samples from the scree pile were analyzed for uranium and some for thorium and molybdenite. The samples represent a scintillation range of 3000 to greater than 10,000 cps. All the samples contained

Uranium lbs/ton Geochemical Determination



greater than 4.0 lbs of uranium per ton, up to a maximum of 120 lbs U per ton. The average uranium to thorium ratio was 30 to 1. One highly radioactive sample contained 0.3 % molybdenite. The uranium content of select boulders in the scree pile is considerably higher than select samples from the radioactive outcrop, suggesting a richer source for the radioactive overburden than is represented by the outcrop.

8c: Reconnaissance (Drawing 6)

Spectrometer readings were recorded on several spot radioactive anomalies in porphyritic syenite over the northeast portion of the property. Equivalent assays indicate a low uranium to thorium ratio. Uranium equivalents do not exceed 0.23 lbs per ton.

9: GEOPHYSICAL SURVEYS

A magnetometer and electromagnetometer survey were conducted on the detailed grid. The surveys were prompted by a compass needle deflection previously observed.

9a: Magnetometer Survey

Drawing 7 shows the results of the magnetometer survey over the detailed grid. The magnetometer was held at waist level. Base stations were established along the control line at 12N, 14N, 16N and 18N.

Magnetic response varied considerably, from 4850 to 8750 gammas. The map shows that the zone of radioactive scree corresponds to an intermediate magnetic high (6000 to 7000 gammas). The high does not extend to the radioactive outcrop at the height of land and terminates to the south in mixed scree and moraine.

Magnetic anomalies in the west portion of the grid were found to be attributable to finely disseminated magnetite in trachyte porphyry(?).

9b: Electromagnetometer Survey (EM-16)

The results of the EM-16 survey are shown on Drawing 8. No significant electromagnetic response is evident.

10: STATEMENT OF COSTS

The following expenditures were incurred for exploration on the Teta group of claims. Documentation is presented in Appendix 4.

A) Salary of Personnel

Project Manager (J. Brophy)

|                                     |         |
|-------------------------------------|---------|
| - 1 month preparation and logistics | \$1,400 |
| - 1 month exploration               | 1,400   |
| - 1 month report and maps           | 1,400   |

Project Geologist (B. Scott)

|                       |       |
|-----------------------|-------|
| - 1 month exploration | 1,550 |
|-----------------------|-------|

Factotum (E. Ponton)

|                   |     |
|-------------------|-----|
| - 1 month of work | 850 |
|-------------------|-----|

Expediter (S. Rafuse)

|                   |            |
|-------------------|------------|
| - 1 month of work | <u>300</u> |
|-------------------|------------|

|             |         |
|-------------|---------|
| Total ..... | \$6,900 |
|-------------|---------|

B) Transportation, Freight, Air Support

|                             |                   |
|-----------------------------|-------------------|
| Transportation of personnel | \$ 877.00         |
| Freight                     | 749.92            |
| Helicopter                  | 3,922.86          |
| Truck Rental                | 238.00            |
| Total .....                 | <u>\$5,857.78</u> |

C) Provisions

|  |            |
|--|------------|
| Lumber, Camp Supplies, Fuel, Groceries | \$2,100.26 |
|--|------------|

D) Accomodation

167.90

E) Geochemical Determinations

179.19

F) Summary

|                             |               |
|-----------------------------|---------------|
| Salary                      | \$6,900.00    |
| Transport, Freight, Support | 5,857.78      |
| Provisions                  | 2,100.26      |
| Accomodations               | 167.90        |
| Geochemical Determinations  | 179.19        |
|                             | <u>179.19</u> |

Grand Total ..... \$15,205.13

*J. Brophy*

A P P E N D I X 2

SPECIFICATIONS OF INSTRUMENTS

A) SCINTREX BGS-1SL SCINTILLOMETER

Detector: Thallium activated sodium iodide crystal and photomultiplier assembly

Detector Volume: 1.5" x 1.5" for 2.65 cubic inches (43.5 cm<sup>3</sup>)

Energy Response: Broadband, all gamma energies above 0.1 MeV

Ratemeter Ranges: 30, 100, 300, 1000, 3000, 10000 cps  
(1 cps = 2.5 x 10<sup>4</sup> mR/hr)

Accuracy: ± 5% of full scale

Temperature Range: -20°C, + 55°C

Power Supply: 4 "D" cells

Dimensions: 240 mm x 90 mm x 150 mm

Weight: 2.2 kg (with batteries)

B) EM-16, VLF ELECTROMAGNETIC UNIT

Source of Field: VLF Station, Maine, U.S.A.

Parameters Measured: 1) Vertical in-phase component  
2) Vertical quadrature component

Frequency Range: 15 - 25 kHz

Scale Range: in-phase ± 150%  
quadrature ± 40%

Readability: ± 1%

Temperature Range: -40° to +50°C

Power Supply: 6 "AA" cells

Dimensions: 42 x 14 x 9 cm

Weight: 1.6 kg

## C) Exploranium Disa 400—a Spectrometer and NaI 21 Crystal

### CONSOLE SPECIFICATIONS

|                               |  |
|-------------------------------|--|
| <b>Energy Discrimination:</b> | Three switch selectable differential window settings (factory adjusted), and one total count (threshold) setting:<br>Potassium ( $K^{40}$ ): Window peak—1.46 MeV<br>Window width—200 KeV<br>Uranium (as $Bi^{214}$ ): Window peak—1.76 MeV<br>Window width—200 KeV<br>Thorium (as $Tl^{208}$ ): Window peak—2.62 MeV<br>Window width—400 KeV<br>Total Count (T/C): All energy above 0.4 MeV |
| <b>Count Rate:</b>            | Switch selectable sampling times of 1, 2, 4, 6, 8, 10, 20 or 30 seconds/minutes. Sampling is activated by front panel pushbutton.  |
| <b>Ready Alarm:</b>           | Audio tone (constant) indicates count rate is completed and data is ready to be displayed.   |
| <b>Data Output:</b>           | Visual: Illuminated 4-digit numeric readout. Data is displayed sequentially as T/C, K, U and Th.<br>Analog: Continuous count of any one channel from front panel BNC connector.<br>Output Level: 1 v, 5 ma. max. (100 counts/sec full scale)<br>Full Scale Range Expander: $\times$ 1, 2, 4, 8, 32, 64, 128<br>Sampling Time Constant: 1, 2, 5, 10 seconds                                   |
| <b>Calibration Source:</b>    | Cesium—137 ( $Cs^{137}$ )  |
| <b>Power Requirements:</b>    | Twelve 1.5 v "D-cell" flashlight batteries. Charge state indicated by front panel meter. One set batteries allows approximately 40 hours continuous operation (Note: Battery life diminishes with a decrease in ambient temperature).  |
| <b>Temperature Range:</b>     | -20°C to +85°C   |
| <b>Size:</b>                  | 3.5 in. high x 7.0 in. wide x 10.5 in. deep (9 x 18 x 27 cm)   |
| <b>Weight:</b>                | 7 lbs. (3.2 kg) including batteries  |

### DETECTOR SPECIFICATIONS

A variety of crystal detectors may be used with the DISA-400A console for specific applications. Each detector consists of a sodium-iodide ( $NaI$ ) crystal optically coupled to a high-gain photomultiplier tube and hermetically sealed within a thermally insulated housing. Each housing also contains a high voltage power supply (nominally 900V regulated to within  $\pm 0.05\%$ ) and preamplifier. Appropriate inter-connecting cables are included.

|   |   |
|---|---|
| <b>Portable Detector:<br/>(Model N<sub>1</sub>I-21)</b> | Crystal: 3" dia. x 3" thk. (7.6 x 7.6 cm)<br>Volume: 21.2 cu. in. (347 cm <sup>3</sup> )<br>Housing: Aluminum<br>Size: 4.5" dia x 14.1 (11.5 x 36 cm)<br>Weight: 7.5 lbs (3.4 kg) |
|---|---|

D)

## SPECIFICATIONS OF FLUXGATE MAGNETOMETER MODEL MF-1

|   |  |
|---|--|
| <b>Ranges:</b>                            | Plus or minus —  |
|   | 1,000 gammas f. sc.  |
|   | 3,000     "  |
|   | 10,000   "   |
|   | 30,000   "   |
|   | 100,000   "  |
|   | Sensitivity  |
|   | 20 gammas/div.   |
|   | 50     "   |
|   | 200   "  |
|   | 500   "  |
|   | 2,000 "  |
| <b>Meter:</b>                             | Taut-band suspension   |
|   | 1000 gammas scale 1 7/8" long — 50 div.  |
|   | 3000 gammas scale 1 11/16" long — 60 div.  |
| <b>Accuracy:</b>                          | 1000 to 10,000 gamma ranges $\pm$ 0.5% of full scale   |
|   | 30,000 and 100,000 gamma ranges $\pm$ 1% of full scale   |
| <b>Operating Temperature:</b>             | —40°C to +40°C   |
|   | —40°F to +100°F  |
| <b>Temperature Stability:</b>             | Less than 2 gammas per °C (1 gamma / °F)   |
| <b>Noise Level:</b>                       | Total 1 gamma P-P  |
| <b>Long Term Stability:</b>               | $\pm$ 1 gamma for 24 hours at constant temperature   |
| <b>Bucking Adjustments:</b><br>(Latitude) | 10,000 to 75,000 gammas by 9 steps of approximately 8,000 gammas and fine control by 10 turn potentiometer. Convertible for southern hemisphere or $\pm$ 30,000 gammas equatorial. |
| <b>Recording Output:</b>                  | 1.7 ma per oersted for 1000 to 100,000 gamma ranges with maximum termination of 15,000 ohms.   |
| <b>Response:</b>                          | DC to 5 cps (3db down)   |
| <b>Connector:</b>                         | Amphenol 91-MC3F1  |
| <b>Batteries:</b>                         | 12 x 1.5V-flashlight batteries "C" cell type)<br>(AC Power supply available)   |
| <b>Consumption:</b>                       | 50 milliamperes  |
| <b>Dimensions:</b>                        | Instrument — 6 1/2" x 3 1/2" x 12 1/2"   |
|   | 165 x 90 x 320 mm  |
|   | Battery pack — 4" x 2" x 7"  |
|   | 100 x 50 x 180 mm  |
|   | Shipping Container — 10" dia x 16"   |
|   | 254 mm dia. x 410 mm   |
| <b>Weights:</b>                           | Instrument — 5 lbs. 12 oz.     2.6 kg.   |
|   | Battery Pack — 2 lbs. 4 oz.    1.0 kg.   |
|   | Shipping — 13 lbs.           6.0 kg.   |



### SCINTREX LIMITED

79 Martin Ross Avenue, Downsview, Ontario, Canada

PLEASE NOTE OUR NEW ADDRESS  
222 Snidercroft Rd., Concord, Ontario.

A P P E N D I X 3

---

Results

of

Geochemical Determinations



# BONDAR-CLEGG &

764 BELFAST ROAD, OTTAWA, ONTARIO, I

Report # 1249-7

## Geochemical Lab

Extraction U- HNO<sub>3</sub> Th XRF Report No \_\_\_\_\_  
 Method Fluorimetric From \_\_\_\_\_  
 Fraction Used -100 rocks Date Aug

| SAMPLE NO.    | U ppm | Th ppm        | U lb/ton | Th lb/ton       |
|---------------|-------|---------------|----------|-----------------|
| OC 77 JB 1-10 | 97    | 142           | .19      |                 |
| 2             | 141   |               | .282     |                 |
| 3             | 54    |               | .108     |                 |
| 4             | 104   | 76            | .208     | .152            |
| 5             | 50    |               | .100     |                 |
| 6             | 198   |               | .396     |                 |
| 7             | 9     |               | .018     |                 |
| 8             | 8     | 80            | .016     | .16             |
| 9             | 15    |               | .03      |                 |
| 10            | 16    |               | .032     |                 |
| 11            | 9     |               | .018     |                 |
| 12            | 67    | 62            | .134     | .124            |
| 13            | 134   |               | .268     |                 |
| 14            | 6     |               | .012     |                 |
| 15            | 134   |               | .268     |                 |
| 16            | 630   | 27            | 1.260    | .054            |
| OBB 77JB 3-10 | 31500 |               | 63       |                 |
| 4             | 3000  | 97            | 6        | .19             |
| 5             | 2940  |               | 5.9      |                 |
| 6             | 890   |               | 1.78     |                 |
| 7             | 2500  |               | 5        |                 |
| 8             | 2210  | 98            | 4.4      | .196            |
| 9             | 2100  |               | 4.2      |                 |
| 10            | 990   |               | 1.98     |                 |
| 11            | 480   |               | .96      |                 |
| 12            | 12530 | 355           | 25       | .71<br>Due to   |
| 13            | 2940  |               | 5.9      | on your         |
| 16            | 3950  | 84            | 7.9      | .168<br>results |
|               |       | Th: to follow |          |                 |



JOHN TISROPHY 51

# BONDAR-CLEGG & COMPANY LTD.

764 BELFAST ROAD, OTTAWA, ONTARIO, K1G 0Z5

PHONE: 237-3110

## Geochemical Lab Report

25 AUG REC'D

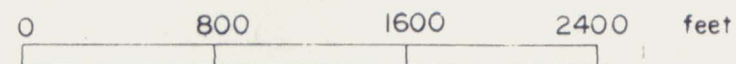
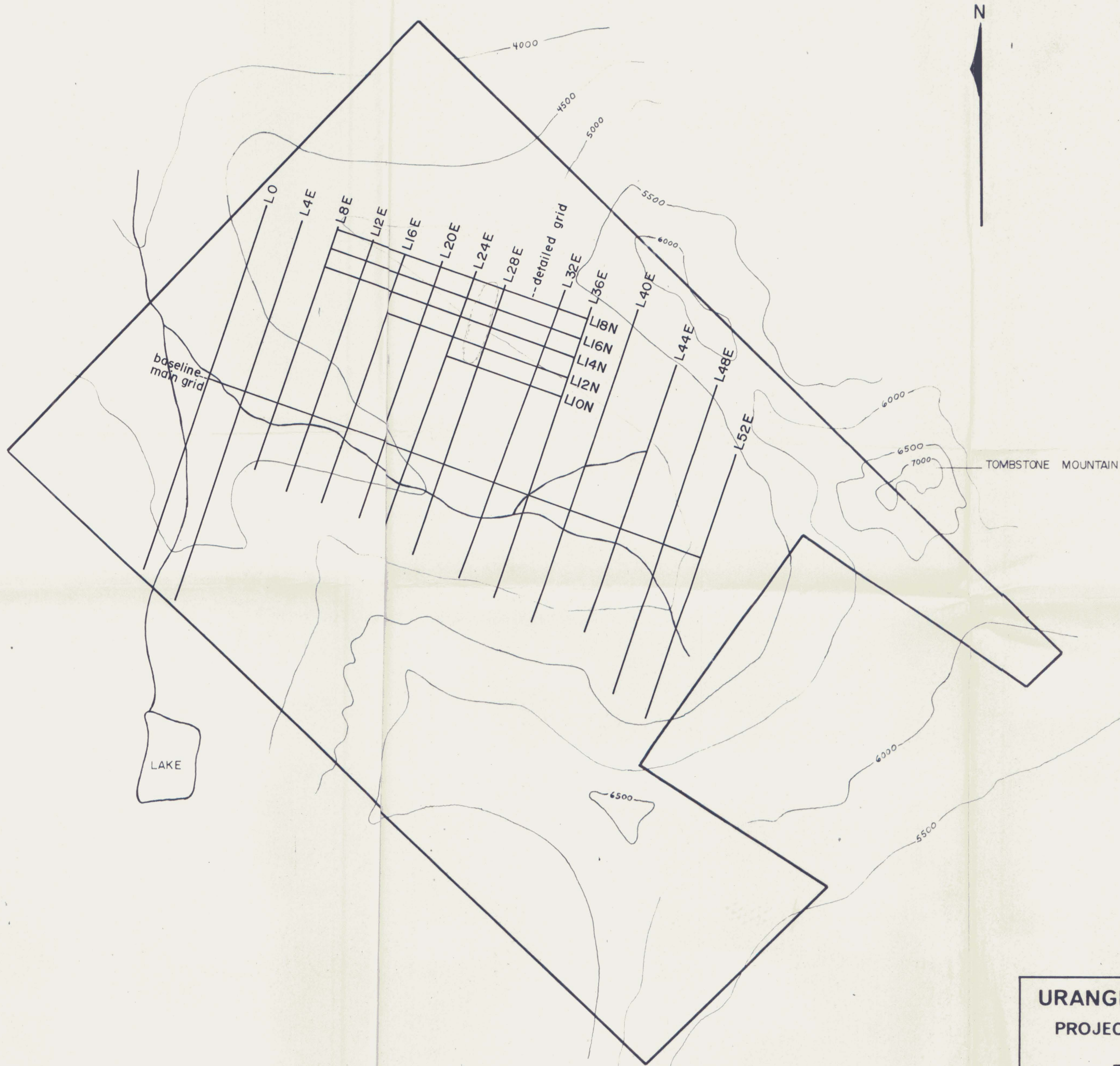
Extraction Cu, Mo, Ag-HNO<sub>3</sub>-HCl, U-HNO<sub>3</sub> Report No. 1248-7  
 Method A.A. Fluorimetric From Urangesellschaft Canada Limited  
Project # K 14, 17  
 Fraction Used -100 rocks Date August 22, 19 77

| SAMPLE NO.     | Au<br>ppb | Cu<br>ppm | Mo<br>ppm  | U<br>ppm | Ag<br>ppm | U<br>lb/ton | REMARKS |  |
|----------------|-----------|-----------|--|----------|-----------|-------------|---------|--|
| OB 77 JB 14-10 |           |           | 3042   | 60000    |           |             |         |  |
| 15-10          |           |           | 212  | 16000    |           |             |         |  |
| OC 77 JB 18-10 | N.D       | 205       | 887  | 500      | 1.1       |             |         |  |
| 19-10          | <5        | 84        | 214  | 95       | 0.6       |             |         |  |
| 20-10          | 10        | 138       | 26   | 70       | 0.4       |             |         |  |
| 21-10          | <5        |           |  | 450      |           |             |         |  |
| OBB77 JB 1-10  | 65        |           |  | 560      |           |             |         |  |
| 2-10           | 35        |           |  | 2500     |           |             |         |  |
|                |           |           | Au- results to follow  |          |           |             |         |  |
|                |           |           | Due to the extensive reporting required on your samples we are |          |           |             |         |  |
|                |           |           | submitting the results on our regular office forms.            |          |           |             |         |  |

**LEGEND**

--- TOPOGRAPHIC CONTOUR (ft.)



--- DRAINAGE

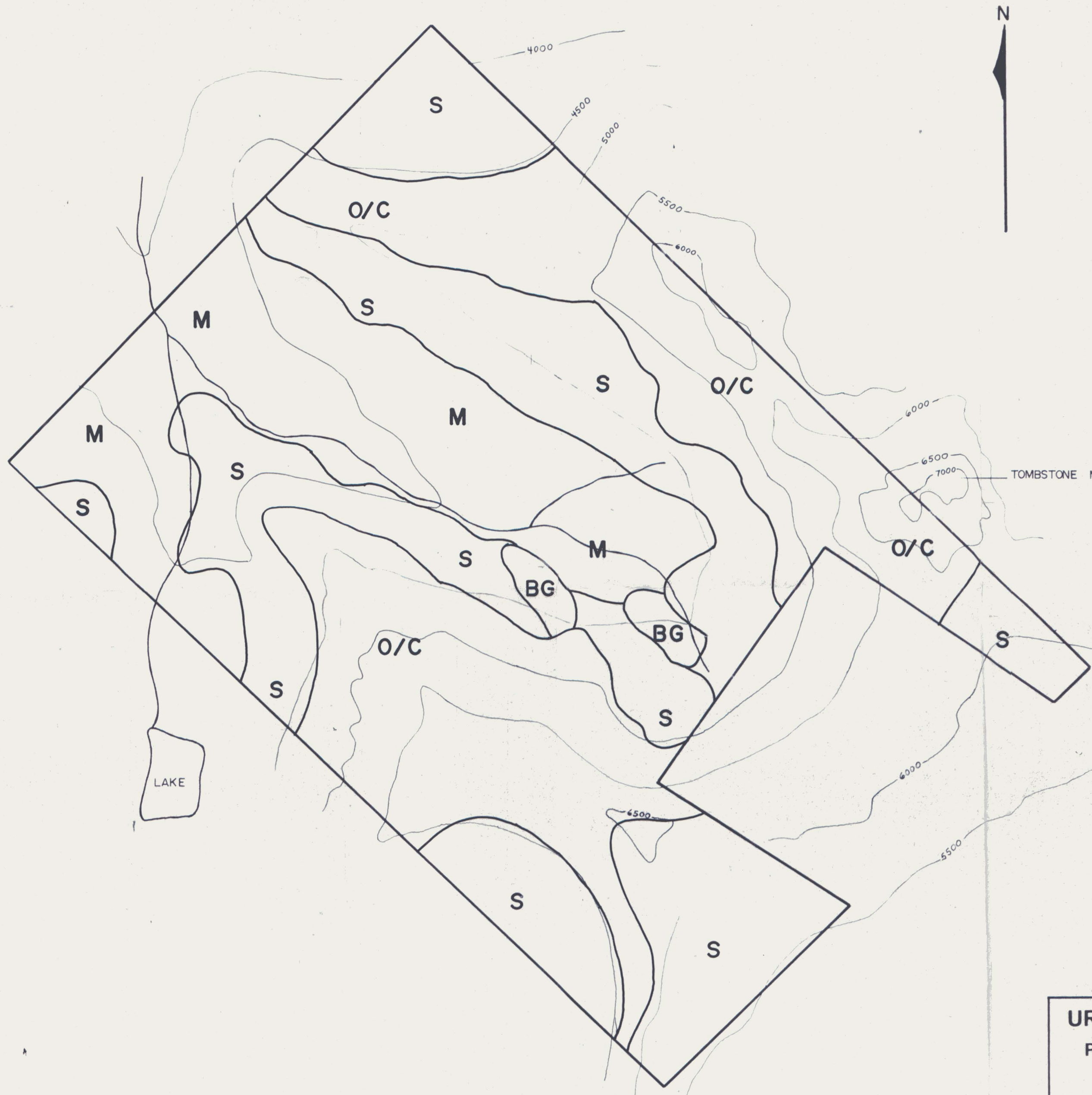


*J. Brough*  
**URANGESELLSCHAFT CANADA LIMITED**  
PROJECT: K14-1.7 YUKON  
TETA CLAIM GROUP  
LOCATION OF MAIN & DETAILED GRIDS

DWG. NO. 11  
SCALE: 1" = 800'  
DRAWN BY: PMV  
N.T.S. 116B-7  
DATE: 22/9/77  
CHECKED BY: JB

**LEGEND**

-  TOPOGRAPHIC CONTOUR (ft.)
-  DRAINAGE
- M GLACIAL MORAINE
- S SCREE
- B BOULDER GLACIER
- O/C OUTCROP



*J. Bandy*

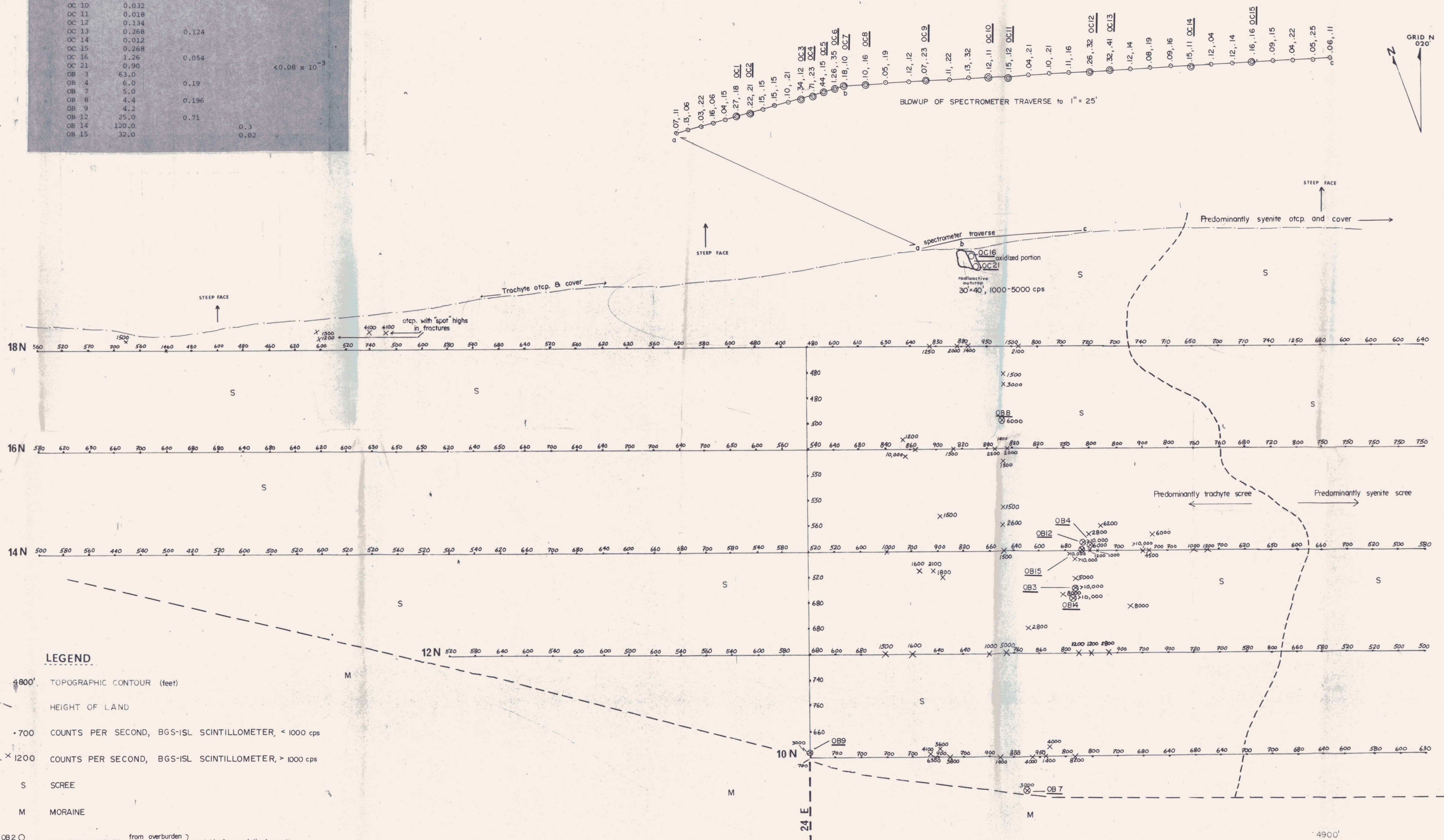
**URANGESELLSCHAFT CANADA LIMITED**  
 PROJECT: K14-1.7 YUKON  
 TETA CLAIM GROUP  
**SURFICIAL GEOLOGY**

DWG. NO. 2      SCALE: 1" = 800'      DRAWN BY: PMV  
 N.T.S. 116B-7      DATE: SEPT. 27, 1977      CHECKED BY: JB



TABLE OF ANALYSES

| Sample # | U (lbs/ton) | Th (lbs/ton) | Mo (%) | Au (oz/ton)              |
|----------|-------------|--------------|--------|--------------------------|
| OC 1     | 0.19        |              |        |                          |
| OC 2     | 0.28        |              |        |                          |
| OC 3     | 0.11        |              |        |                          |
| OC 4     | 0.21        | 0.15         |        |                          |
| OC 5     | 0.10        |              |        |                          |
| OC 6     | 0.40        |              |        |                          |
| OC 7     | 0.018       |              |        |                          |
| OC 8     | 0.016       | 0.16         |        |                          |
| OC 9     | 0.03        |              |        |                          |
| OC 10    | 0.032       |              |        |                          |
| OC 11    | 0.018       |              |        |                          |
| OC 12    | 0.134       |              |        |                          |
| OC 13    | 0.268       | 0.124        |        |                          |
| OC 14    | 0.012       |              |        |                          |
| OC 15    | 0.268       |              |        |                          |
| OC 16    | 1.26        |              |        |                          |
| OC 21    | 0.90        | 0.054        |        |                          |
| OB 3     | 63.0        |              |        | <0.08 x 10 <sup>-3</sup> |
| OB 4     | 6.0         | 0.19         |        |                          |
| OB 7     | 5.0         |              |        |                          |
| OB 8     | 4.4         | 0.196        |        |                          |
| OB 9     | 4.2         |              |        |                          |
| OB 12    | 25.0        | 0.71         |        |                          |
| OB 14    | 120.0       |              | 0.3    |                          |
| OB 15    | 32.0        |              | 0.02   |                          |



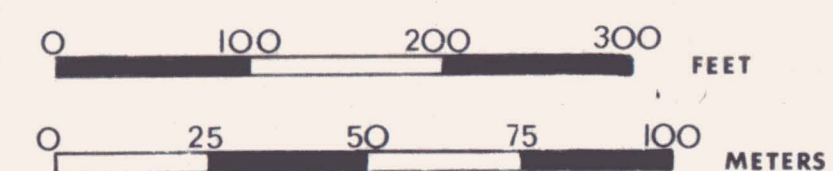
**LEGEND**

- 4800' TOPOGRAPHIC CONTOUR (feet)
- HEIGHT OF LAND
- 700 COUNTS PER SECOND, BGS-ISL SCINTILLOMETER, < 1000 cps
- × 1200 COUNTS PER SECOND, BGS-ISL SCINTILLOMETER, > 1000 cps
- S SCREE
- M MORAINE
- ANALYZED SAMPLES from overburden } see table for analytical results
- ANALYZED SAMPLES from outcrop }




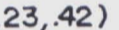
○ .22, .21 SPECTROMETER STATION; EQUIVALENT URANIUM, EQUIVALENT THORIUM in pounds per ton

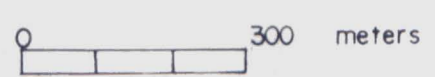
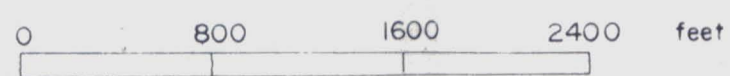
**URANGESELLSCHAFT CANADA LIMITED**  
 PROJECT: K14, 1.7 YUKON  
 TETA CLAIM GROUP, DETAILED GRID,  
 GRID SCINTILLOMETER SURVEY MAP  
 showing ROCK GEOCHEMISTRY, SPECTROMETRY  
 and SURFICIAL GEOLOGY

DWG. NO. 5 SCALE: 1" = 100' DRAWN BY: PMV  
 N.T.S. 116 B 7 DATE: 20/9/77 CHECKED BY: JB



**LEGEND**

-  TOPOGRAPHIC CONTOUR (ft.)
-  DRAINAGE
-  RADIOACTIVE "SPOT"  
cps BGS-ISL SCINTILLOMETER
-  (.23,42) SPECTROMETER EQUIVALENT ASSAYS,  
U, Th in lbs/ton



*J. Brady*

**URANGESELLSCHAFT CANADA LIMITED**  
**PROJECT: K14-1.7 YUKON**  
**TETA CLAIM GROUP**  
**RECONNAISSANCE RADIOMETRICS**

|               |                  |                |
|---------------|------------------|----------------|
| DWG. NO. 6    | SCALE: 1" = 800' | DRAWN BY: PMV  |
| N.T.S. 116B-7 | DATE: 1/10/77    | CHECKED BY: JB |

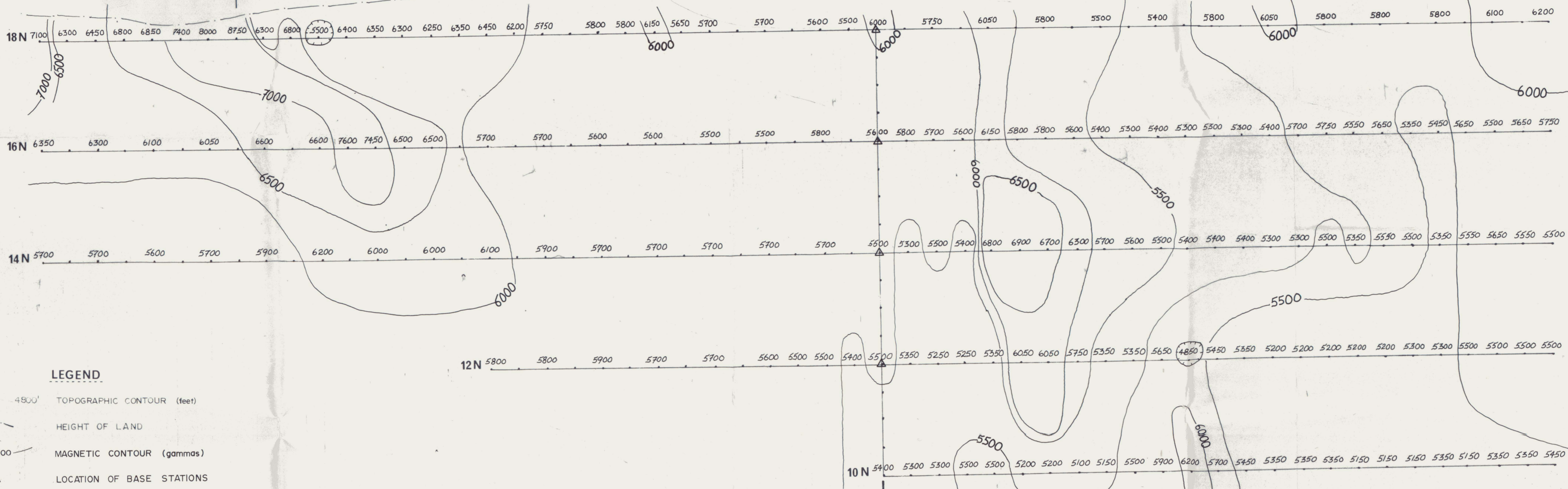


↑  
STEEP FACE

↑  
STEEP FACE

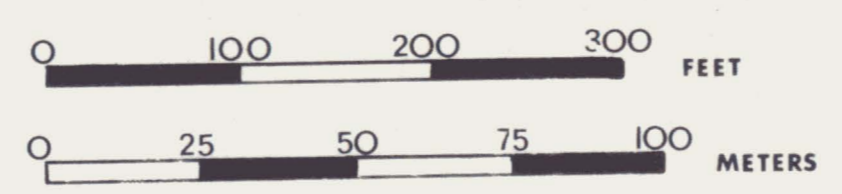
↑  
STEEP FACE

radioactive outcrop



**LEGEND**

- - - TOPOGRAPHIC CONTOUR (feet)
- - - HEIGHT OF LAND
- MAGNETIC CONTOUR (gammas)
- △ LOCATION OF BASE STATIONS



*J. Budy*

**URANGESELLSCHAFT CANADA LIMITED**  
 PROJECT: K14, 1.7 YUKON  
 TETA CLAIM GROUP, DETAILED GRID  
**MAGNETOMETER SURVEY**

DWG. NO. 7      SCALE: 1" = 100'      DRAWN BY: PMV  
 N.T.S. 116 B 7      DATE: 24-9-77      CHECKED BY: JB





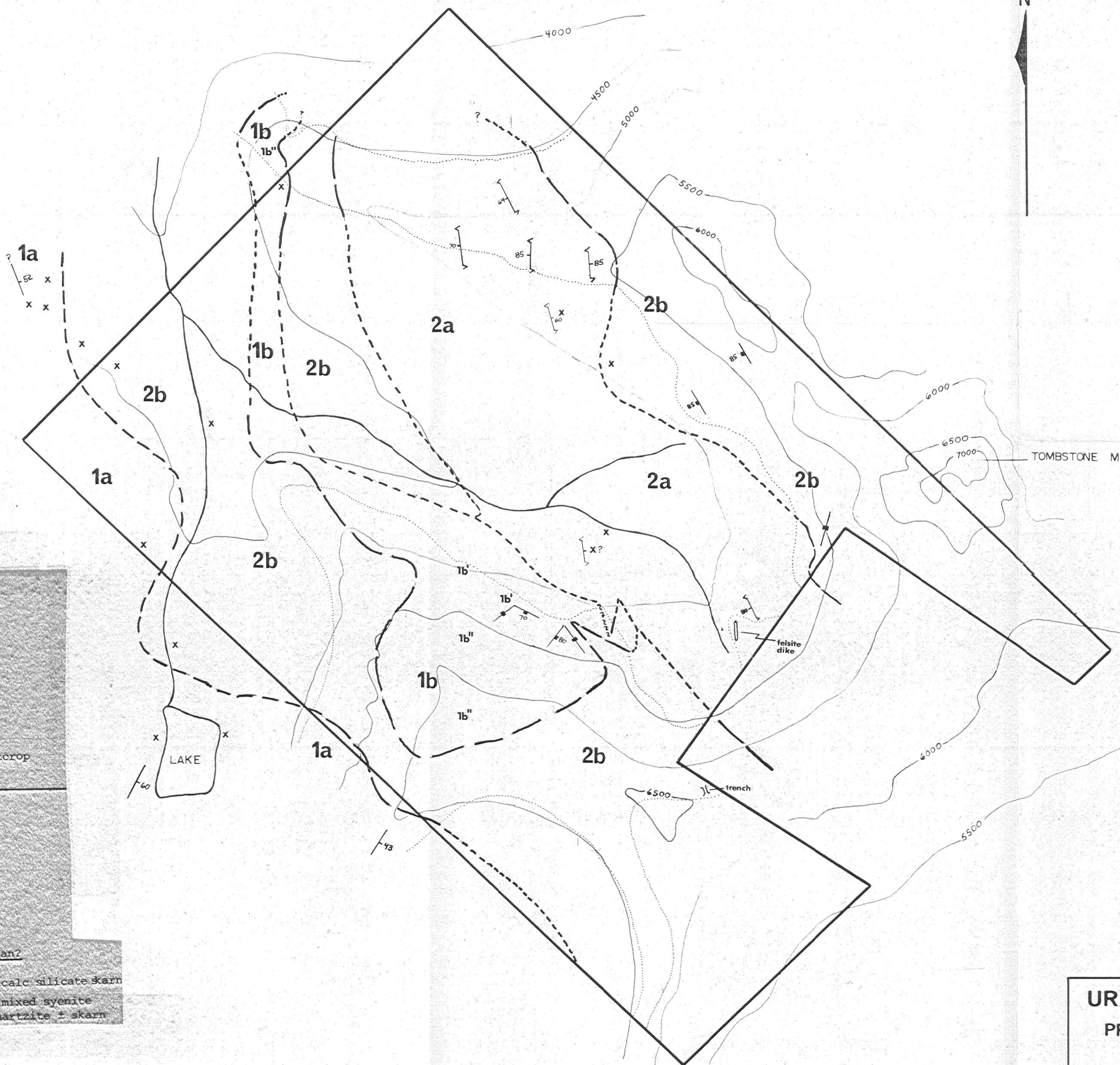
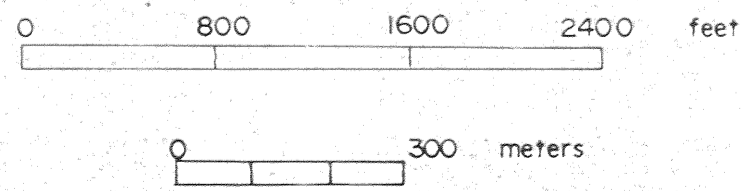
**LEGEND**

4000 TOPOGRAPHIC CONTOUR (ft.)

DRAINAGE

- Shear and dip
- Joints, vertical, inclined
- Strike and dip of bedding
- Fault contact
- Geological contact: observed  
defined  
assumed
- Outcrop boundary, isolated outcrop

- Middle Cretaceous
- 2a** Trachyte porphyry (?)
- 2b** Porphyritic syenite
- Lower Cretaceous
- 1a** Orthoquartzite, minor slate
- Middle Cretaceous to Ordovician?
- 1b** Hybrid zone
  - 1b'** dominantly calc silicate skarn
  - 1b''** dominantly mixed syenite and orthoquartzite + skarn



*J. Beaghey*

**URANGESELLSCHAFT CANADA LIMITED**  
 PROJECT: K14-1.7 YUKON  
 TETA CLAIM GROUP  
 GEOLOGICAL MAP

DWG. NO. 3      SCALE: 1" = 800'      DRAWN BY: PMV  
 N.T.S. 116B-7      DATE: 1/10/77      CHECKED BY: JB

090261