

GEOLOGICAL AND GEOCHEMICAL REPORT

ON THE

BOB CLAIM GROUP

CLAIMS: Bob 1 - 56 inclusive

Watson Lake Mining District, Yukon Territory  
Fortin Lake Area, N.T.S. 105-G-15  
Lat. 61°57'N, Long. 130°30'W

WORK PERIOD: July 6 to August 31, 1977

FOR

OGILVIE JOINT VENTURE

CLAIMS HELD IN TRUST BY

BRITISH NEWFOUNDLAND EXPLORATION LIMITED  
704 - 602 West Hastings Street  
Vancouver, B. C.

By

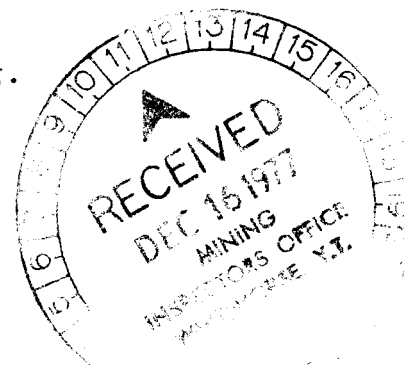
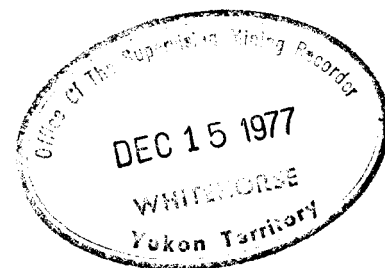
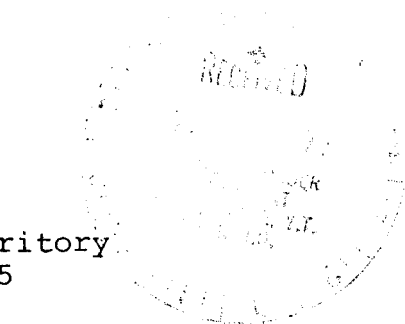
J. D. Rowe, B.Sc.  
Geologist

Supervised by: O. S. Hairsine, P.Eng.

CORDILLERAN ENGINEERING LIMITED  
1418 - 355 Burrard Street  
Vancouver, B.C. V6C 2G8

NOVEMBER, 1977

090252



This report was prepared by the  
Geological Survey of the Department of  
Internal Affairs  
of the State of California  
as required by the  
Statutes of the State of California

*[Handwritten signature]*

Section of the Geological Survey  
Department of Internal Affairs  
State of California

SEE EM & MAG. SURVEY  
REPORT FOR  
*[Handwritten signature]*  
FOR COMMISSIONER

## TABLE OF CONTENTS

	PAGE
INTRODUCTION .....	1
GEOLOGY .....	4
General .....	4
Stratigraphy .....	5
Structure .....	7
Mineralization .....	8
GEOCHEMICAL SOIL SURVEY .....	9
Sampling Method .....	9
Sample Analysis .....	11
Presentation of Results .....	12
Discussion of Results .....	13
CONCLUSIONS .....	17
RECOMMENDATIONS .....	18

## FIGURES

<u>FIGURE 1</u>	Location Map (1" = 80 mi.) .....	3
<u>FIGURE 2</u>	Soil Profiles .....	10
<u>FIGURE 3</u>	Soil Profiles .....	11

TABLE OF CONTENTS

APPENDICES

<u>APPENDIX "A"</u>	References	
<del>* <u>APPENDIX "B"</u></del>	<del>Personnel</del>	
<u>APPENDIX "C"</u>	Claim Record Summary	
<del>* <u>APPENDIX "D"</u></del>	<del>Certificates</del>	
<u>APPENDIX "E"</u>	Geochemical Lab Reports	
<del>* <u>APPENDIX "F"</u></del>	<del>Affidavit of Expenses</del>	
<u>APPENDIX "G"</u>	<u>Plates:</u>	
<u>Plate 1</u>	Claim Map	1" = 500'
<u>Plate 2</u>	Geology Map	1" = 500'
<u>Plate 3</u>	Lead Geochemical Map	1" = 500'
<u>Plate 4</u>	Zinc Geochemical Map	1" = 500'
<u>Plate 5</u>	Copper Geochemical Map	1" = 500'
<u>Plate 6</u>	Compilation Map	1" = 500'

\*For Government Assessment Reports only

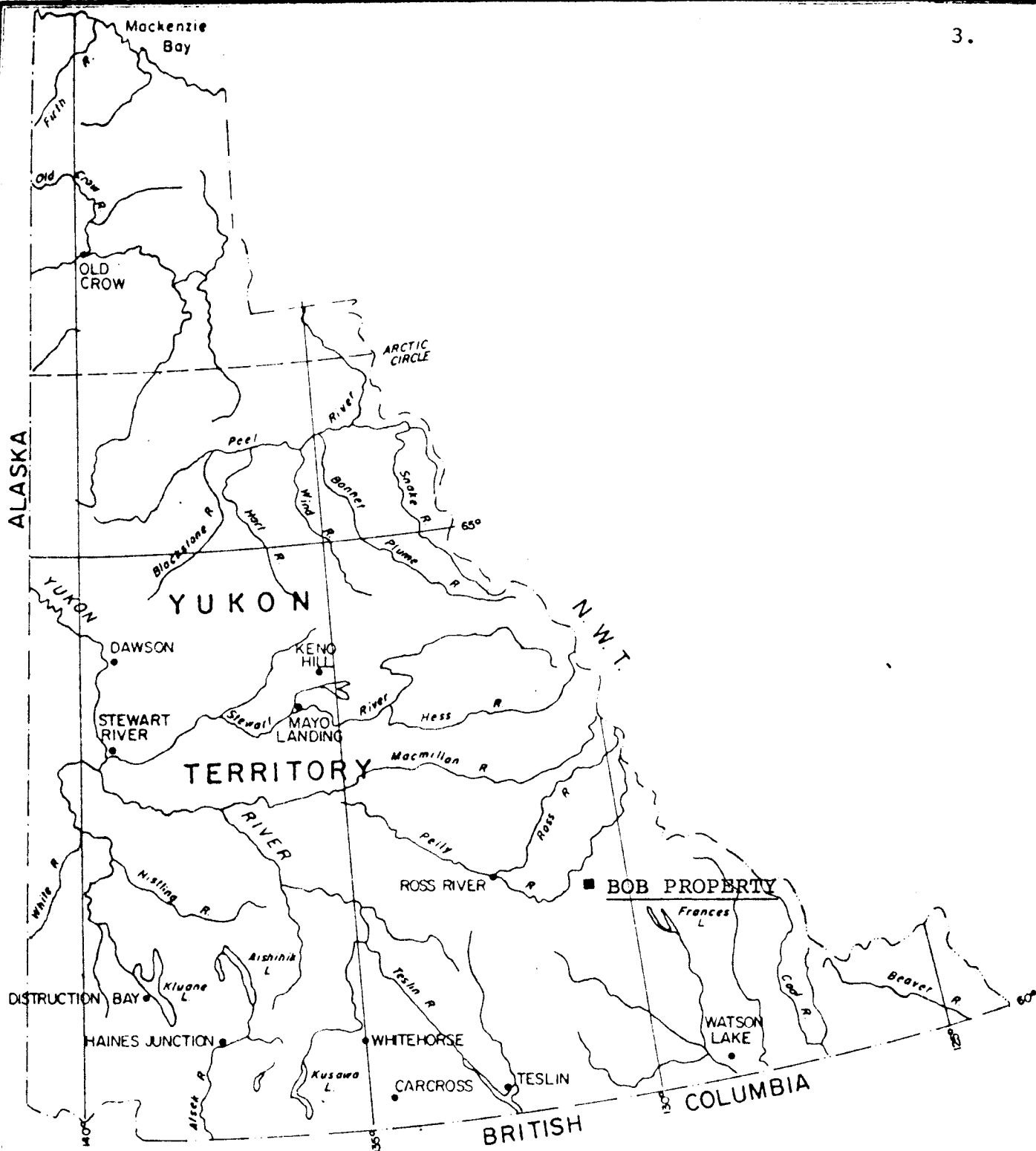
## I N T R O D U C T I O N

The Bob Property composed of 56 mineral claims on the east side of Fortin Lake is 67 miles east of Ross River, Y.T. Access to the property is by float plane, helicopter, or track vehicle over twenty miles of winter road originating from the Campbell Highway.

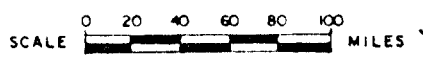
Geological and geochemical surveys were carried out by Cordilleran Engineering Limited during the period July 6 to August 31, 1977 for the Ogilvie Joint Venture whose claims are held in trust by British Newfoundland Exploration Limited.

These surveys were directed at locating lead, zinc, and copper mineralization in a geological environment believed to be similar to that which hosts the Anvil deposit.

An air photo enlargement at a scale of approximately 1 inch equals 500 feet was used as a control for the surveys.



LOCATION MAP  
BOB PROPERTY



BY

CORDILLERAN ENGINEERING LTD.  
1418 - 355 BURRARD STREET  
VANCOUVER 1, B.C

FIGURE 1

# G E O L O G Y

## GENERAL

The Bob Property covers an area of flat swampy ground and isolated northwest trending hills blanketed by an unknown thickness of glacial till. Outcrop exposures are restricted to steep banks of a creek which traverses the property. Copper, lead and zinc mineralization occurs in a quartzose phyllite which bears a strong resemblance to a rock type found in the wall rocks of the stratiform Pb-Zn-Ag deposits of the Anvil district.

GEOLOGY (cont'd)STRATIGRAPHY

Two rock types are exposed on the property (see Plate 2, Appendix "F"). They are phyllites of questionable age, but regional correlations suggest that they may be Road River Group equivalents of the Lower Ordovician period. [after C.L. Smith, Exploration Results, Bob Property, Dec., 1976].

A quartzose phyllite (Unit Q) is exposed in outcrop and a trench on the north side of the creek near an old camp site. It is fine grained, quartz-rich, lustrous, and weathers pale shades of tan, buff, and brown. Bedding has been obliterated, and strong foliations bearing 85/50 SE may be mistaken for laminations. White quartz veins one to six inches wide, subparallel to the foliation, contain disseminated blebs of galena, chalcopyrite, pyrite and minor sphalerite. The relative stratigraphic position of this rock unit in relation to a phyllite (Unit S) outcropping downhill is unknown. The two rock types appear to be brought into contact along a fault in this area. An inset map at a scale

GEOLOGY - Stratigraphy (cont'd)

of 1 inch equals 20 feet on the Geological Map (Plate 2, Appendix "G") indicates the locations of the two units.

Unit S, is a sericite phyllite outcropping downhill from Unit Q and upstream, to the east. It is lustrous, greyish green, with dark green irregular laminations which have been distorted and eradicated by strong foliation. The predominant foliation, bearing 85/50 SE, has subparallel veins of barren white quartz 1/16 to 6 inches wide, which give a false impression of bedding. Two bedding attitudes of 010/55 SE were measured along irregular dark green laminations near the contact with Unit Q.

A breccia zone 2 to 3 feet wide occurs along the apparent fault contact of the phyllites. The breccia is composed of angular fragments of sericite phyllite in a matrix of white quartz and coarsely crystalline brown sphalerite.

GEOLOGY (cont'd)STRUCTURE

Regionally, a northeast-trending lineament (through the Pelly Lakes) intersects a north-south lineament (through Fortin Lake) north of the property. Northwest lineaments may also occur, [after C.L.Smith, Exploration Results, Bob Property, Dec., 1976]. Foliations and laminations are tightly folded on a minor, and possibly major, scale in outcrops on the Bob property. The folding, and several criss-crossing joint sets, suggest that strong pressure has been exerted on these rocks, perhaps by an intrusive body located to the east. Similar rock types 2 miles north of the property are characterized by subisoclinal cylindroidal slip folds [C.L.Smith, Dec., 1976]. The brecciated fault zone is parallel to the predominant foliation and they appear to have a common cause.

GEOLOGY (cont'd)MINERALIZATION

Disseminated specks and blebs of chalcopyrite, galena, pyrite and sphalerite occur in quartz veins cutting the quartzose phyllite, and in the surrounding host rock. Zinc oxide and other oxide complexes locally encrust Unit Q. In 1975 chip samples across the quartzose phyllite exposed in the trench assayed 0.01 - 0.24% Cu, 0.01 - 3.00% Pb, and 0.01 - 0.23% Zn. Boulders of quartzose phyllite uncovered by a soil sample pit in the northeast corner of the property contain disseminated specks of mariposite (chromium mica).

The brecciated fault zone between Units Q and S is 2 to 3 feet wide and exposed over 20 feet. Fragments of sericite phyllite occur in a matrix of white quartz and coarsely crystalline, brown sphalerite. A 1975 grab sample from the breccia assayed 40.0% Zn, 0.53% Pb, and 0.04% Cu.

Only disseminated pyrite was encountered in outcrops of sericite phyllite (Unit S).

# G E O C H E M I C A L   S O I L   S U R V E Y

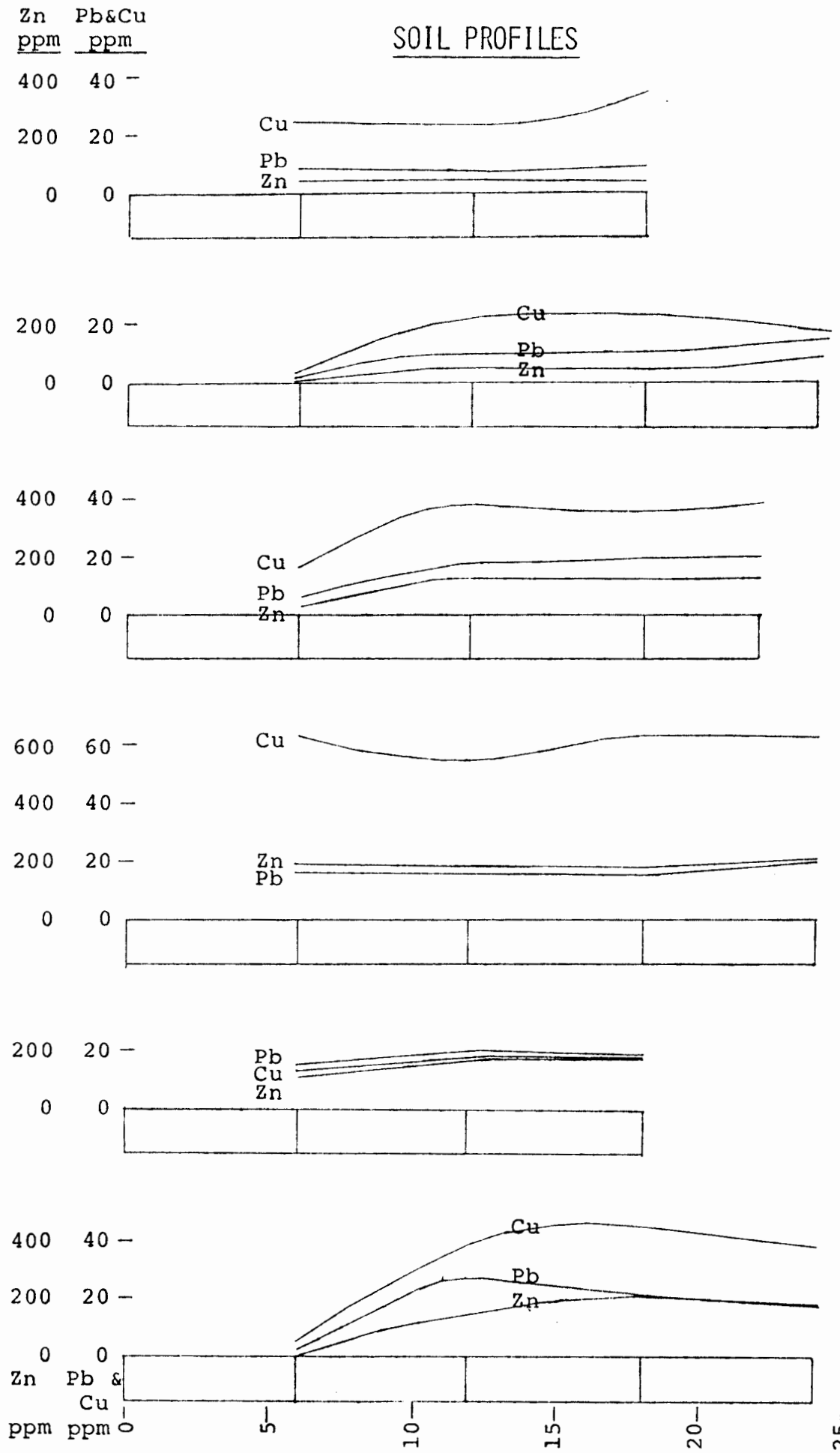
## SAMPLING METHOD

Pits were dug with light mattocks to depths ranging from six to twenty inches. Most samples were taken from the B<sub>2</sub> horizon as the B<sub>1</sub> is generally absent. Soil horizons are poorly developed being formed from recent glacial debris. Several swampy and permafrost areas were encountered where only A<sub>0</sub> or A<sub>1</sub> horizons could be sampled.

At nine locations soil profile pits were sampled to find the optimum sampling depth (see Figures 2 and 3).

Samples were collected every 200 feet along grid lines cut at intervals of 1,000 feet and bearing 180°. Flagged lines between the cut lines, located by chain and

# SOIL PROFILES



L130E Δ190N  
L130E Δ150N  
L125E Δ108N  
L90E Δ190N  
L90E Δ150N  
L90E Δ106N

Depth in inches

FIGURE 2

# SOIL PROFILES

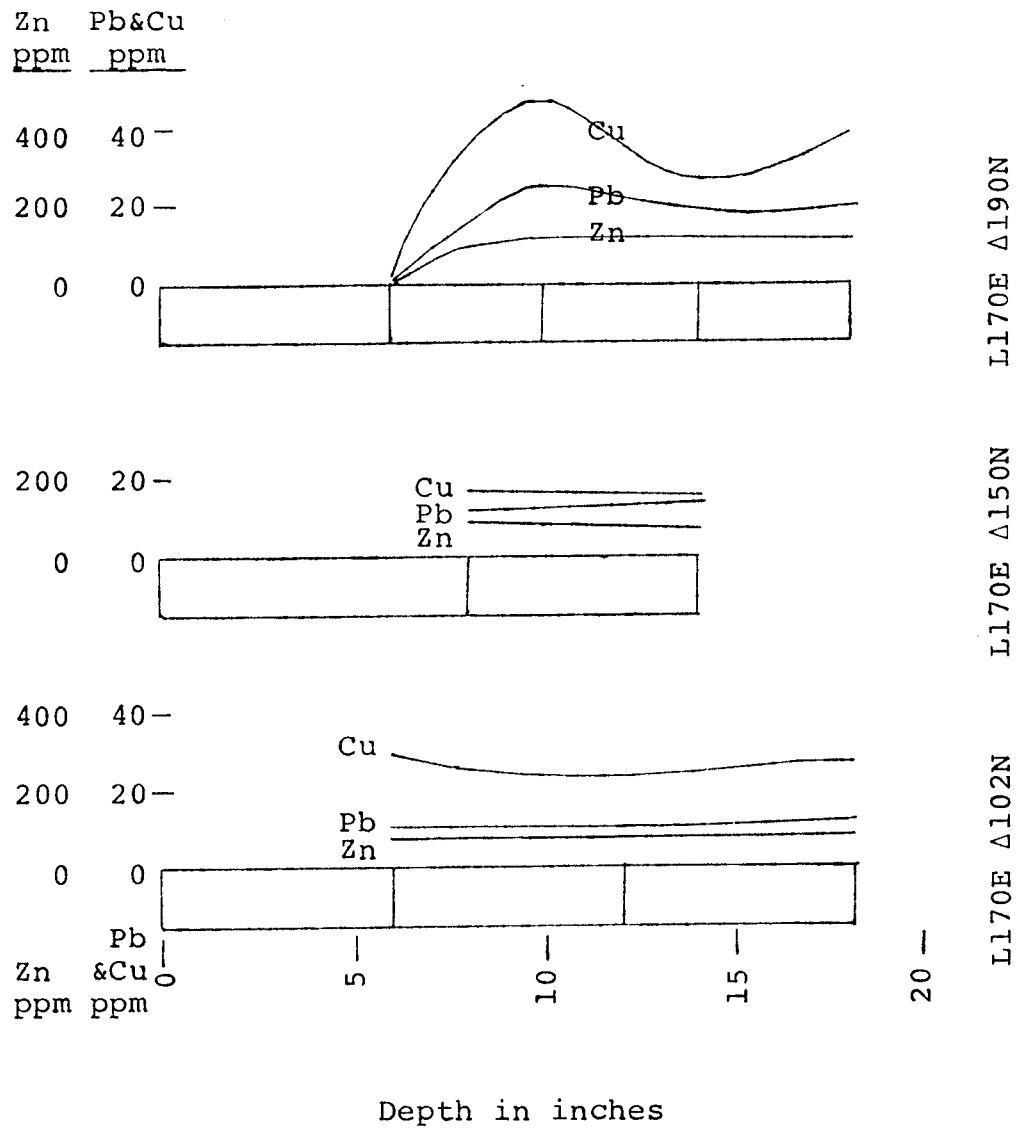


FIGURE 3.

GEOCHEMICAL SOIL SURVEY - Sampling Method (cont'd)

compass, were also sampled at intervals of 200 feet. A section of the cut line crossing the mineralized outcrop and flagged lines on either side, were sampled every 50 feet.

Samples were placed in Kraft "Hi wet-strength open-end" envelopes and grid stations were marked on the envelopes with indelible felt pen.

GEOCHEMICAL SOIL SURVEY (cont'd)SAMPLE ANALYSIS

All soil samples were analyzed for lead, zinc, and copper by Bondar-Clegg and Company Limited of 1500 Pemberton Avenue, North Vancouver, B.C.

Samples were placed in drying cabinets for a period of 24 to 48 hours. The material was then screened and sifted to obtain the -80 mesh fraction. A small amount of the -80 mesh material from each sample was digested in hot Lefort Aqua Regia solution for 2 1/2 hours. Following digestion, each sample was bulked with deionized H<sub>2</sub>O, and analyzed with an Atomic Absorption Spectrometer to determine the parts per million of lead, zinc and copper.

GEOCHEMICAL SOIL SURVEY (cont'd)PRESENTATION OF RESULTS

The lead, zinc and copper contents of soil samples are shown on Plates 3, 4 and 5 in Appendix "G". Areas with anomalous values are outlined by contours. Histograms for each element, with background and anomalous values indicated, appear on each of the foregoing plates.

Plate 6 (Appendix "G") is a compilation map depicting interesting geochemical anomalies, magnetic highs, and conductive zones as defined by an electromagnetic survey.

GEOCHEMICAL SOIL SURVEY (cont'd)DISCUSSION OF RESULTS

Samples from the pit at L170E Δ190N indicate an enriched horizon between 8 and 12 inches, but the rest of the pit samples show moderately consistent values below 8 inches (see Figures 2 and 3). Lower values from some of the samples between 6 and 8 inches indicate that the A horizon extends to that depth. The optimum sampling horizon appears to be between twelve and eighteen inches.

Histograms prepared from the geochemical values indicate the following:

	Zn <u>ppm</u>	Pb <u>ppm</u>	Cu <u>ppm</u>
Background	< 150	< 20	< 35
Possibly Anomalous	150 - 199	20 - 29	35 - 44
Probably Anomalous	200 - 249	30 - 39	45 - 54
Strongly Anomalous	<u>≥</u> 250	<u>≥</u> 40	<u>≥</u> 55

Lead and zinc anomalies coincide very well along a northwest-trending zone up to 500 feet wide and 8,000 feet

GEOCHEMICAL SOIL SURVEY  
Discussion of Results (cont'd)

long (see Plate 6, Appendix "G"). This zone includes the mineralized outcrop exposed on the creek bank, and has strongly anomalous zinc values in that area. The anomaly is extremely elongate and moderately consistent over 8,000 feet. Only very minor copper is associated with it.

A broad area across the southern part of the grid has anomalous copper values, with scattered locations possibly anomalous in lead and zinc. The copper anomaly may be related to a different rock type with higher copper background. A total lack of outcrop in that area prohibits proof of this theory.

Copper and zinc anomalies in the northwest corner of the grid are in a swampy area, and may be due to groundwater enrichment of the soil.

## C O N C L U S I O N S

The breccia, with a massive sphalerite matrix, is considered to represent a fault zone. Mineralized quartz stringers in the quartzose phyllite occur near the fault and are subparallel to it suggesting a common origin. However, at this point in the development of the property there is insufficient evidence to confirm or deny that the sphalerite was remobilized from a massive sulphide body. In that the exposed mineralization has a linear surface trace, the very elongate, northwest-trending lead and zinc anomaly may be related to similar mineralization.

## R E C O M M E N D A T I O N S

Further exploration of the property is warranted and the following work program should be carried out:

- a) Gravity and induced polarization surveys.
- b) Detailed soil sampling to further define the existing lead-zinc anomaly.
- c) Limited diamond drilling of the exposed mineralization and other geochemical and geophysical targets contingent upon the success of the above.

Respectfully submitted

CORDILLERAN ENGINEERING LIMITED

*J. D. Rowe*

J. D. Rowe, B.Sc.

*O. S. Hairsine*

O. S. Hairsine, P.Eng.

Vancouver, B.C.  
November, 1977.

REFERENCESSMITH, C.L.:

Dec. 1976: Ogilvie Joint Venture, Bob Property  
Exploration Results.

WHEELER, J.O. (1958, 1959);GREEN, L.H., and RODDICK, J.A. (1959):

Geological Survey of Canada,  
Map 8-1960, Finlayson Lake, Y.T.  
Sheet 105-G.

CLAIM RECORD SUMMARY

<u>CLAIM NAME</u>	<u>GRANT NUMBER</u>	<u>RENEWAL DATE</u>
BOB 1-16	Y83258 - Y83273	November 23
BOB 17-56	YA12782 - YA12821	November 23

APPENDIX "E"

G E O C H E M I C A L   L A B   R E P O R T S



1500 PEMBERTON AVE., NORTH VANCOUVER, B.C. PHONE: 985-0681 TELEX: 04-54654

Geochemical Lab Report

AUG 3 1977

Extraction Hot Aqua Regia

Report No. 27 - 707 PROJECT: QJV - BOB

Method Atomic Absorption

From Cordilleran Engineering Ltd.

Fraction Used

Date August 3, 19 77

Table with columns for SAMPLE NO., Cu ppm, Pb ppm, Zn ppm, and multiple rows of data for samples 80E, 85E, and 90E.

Geochemical Lab Report

Report No. 27 - 707

Page No. 2

SAMPLE NO.	Cu ppm	Pb ppm	Zn ppm		SAMPLE NO.	Cu ppm	Pb ppm	Zn ppm	
90E 134N	26	13	96		100E 106N	17	7	60	
136N	29	14	94		108N	33	14	136	
138N	21	19	134		110N	39	13	128	
140N	25	16	138		112N	30	13	120	
142N	24	14	116		114N	37	13	166	
144N	8	8	40		116N	17	2	20	
146N	18	17	102		118N	30	13	86	
148N	18	15	110		120N	47	21	164	
150N-A	14	15	102		122N	38	15	140	
150N-B	18	20	188		124N	27	11	110	
150N-C	18	19	190		126N	34	12	96	
152N	11	8	74		128N	22	9	118	
154N	93	26	188		130N	30	12	110	
156N	42	12	76		132N	32	12	95	
158N	58	10	44		134N	31	14	82	
160N	16	4	75		136N	24	12	90	
162N	16	14	92		138N	32	13	84	
164N	23	9	140		140N	8	13	92	
166N	12	23	230		142N	6	10	120	
168N	10	14	100		144N	5	8	42	
170N	26	5	30		146N	20	15	90	
172N	27	18	138		148N	20	15	120	
174N	43	15	180		150N	10	25	108	
176N	48	20	190		152N	6	16	270	
178N	55	18	208		154N	12	7	140	
180N	43	15	160		156N	25	11	126	
182N	40	12	160		158N	11	< 2	28	
184N	37	10	120		160N	36	40	168	
186N	47	16	176		162N	38	28	160	
188N	53	18	192		164N	24	15	88	
190N-A	63	16	180		166N	11	5	40	
190N-B	55	16	178		168N	13	2	20	
190N-C	64	16	170		170N	17	6	41	
190N-D	63	20	210		172N	10	3	26	
100E 102N	49	13	180		174N	29	12	80	
104N	11	3	36		176N	18	2	27	



Geochemical Lab Report

Report No. 27 - 707

Page No. 4

SAMPLE NO.	Cu ppm	Pb ppm	Zn ppm		SAMPLE NO.	Cu ppm	Pb ppm	Zn ppm	
120E 138N	30	14	82		130E 160N	49	20	132	
140N	17	8	70		162N	28	3	86	
142N	35	22	108		164N	23	21	72	
144N	35	20	108		166N	11	11	120	
146N	27	18	144		168N	20	22	120	
148N	16	15	102		170N	29	5	40	
150N	12	33	140		172N	13	6	36	
152N	17	15	36		174N	14	11	92	
154N	23	8	60		176N	17	5	66	
156N	22	18	126		178N	24	18	132	
158N	11	3	24		180N	24	11	44	
160N	27	16	110		182N	27	10	72	
162N	38	18	126		184N	34	16	120	
164N	11	2	18		186N	35	21	124	
166N	6	22	140		188N	13	4	36	
168N	4	7	50		190N-A	25	9	50	
170N	2	< 2	4		190N-B	24	8	56	
172N	29	8	70		190N-C	36	10	56	
174N	6	< 2	10		165E 102N	36	13	136	
176N	13	< 2	24		104N	36	16	106	
178N	32	7	66		106N	37	15	110	
180N	18	12	68		108N	52	20	112	
182N	18	8	40		110N	34	12	88	
184N	21	6	20		114N	30	14	90	
186N	23	8	56		116N	37	12	76	
188N	10	2	20		118N	33	14	76	
190N	25	12	90		120N	30	15	76	
130E 150N-A	5	2	12		122N	25	27	100	
150N-B	23	10	60		124N	19	24	120	
150N-C	24	11	60		126N	9	14	56	
150N-D	18	15	100		128N	30	20	120	
152N	18	4	20		130N	27	8	32	
154N	36	14	80		132N	26	8	56	
156N	24	22	80		134N	21	15	100	
158N	8	14	104		136N	19	16	116	

Geochemical Lab Report

Report No. 27 - 707

Page No. 5

SAMPLE NO.	Cu ppm	Pb ppm	Zn ppm		SAMPLE NO.				
165E 138N	7	12	168						
140N	22	2	19						
142N	28	11	32						
144N	39	11	64						
146N	27	14	72						
148N	14	2	28						
150N	6	< 2	24						
170E 102N-A	28	10	82						
102N-B	22	10	84						
102N-C	26	12	86						
104N	33	14	100						
106N	25	13	86						
108N	28	13	92						
110N	24	12	76						
112N	18	10	78						
114N	23	8	70						
116N	26	13	76						
118N	31	17	76						
120N	29	16	108						
122N	39	40	150						
124N	11	14	48						
126N	24	18	104						
128N	17	5	12						
130N	10	2	12						
132N	7	28	64						
134N	40	20	168						
136N	8	2	18						
138N	27	8	80						
140N	2	2	6						
142N	39	16	100						
144N	22	5	40						
146N	9	5	42						
148N	21	12	92						
150N-A	17	11	80						
150N-B	16	14	64						
					cc Cordilleran -	Ross River			



# BONDAR-CLEGG & COMPANY LTD.

APPENDIX "E" vi.

1500 PEMBERTON AVE., NORTH VANCOUVER, B.C. PHONE: 965-0881

AUG 15 1977

## Geochemical Lab Report

Extraction Hot Aqua Regia Report No. 27 - 781 PROJECT: OJV - BOB  
 Method Atomic Absorption From Cordilleran Engineering Ltd.  
 Fraction Used \_\_\_\_\_ Date August 10, 19 77

SAMPLE NO.	Cu ppm	Pb ppm	Zn ppm		SAMPLE NO.	Cu ppm	Pb ppm	Zn ppm
L80E - 126N	30	16	120		L85E - 142N	21	15	96
128N	19	25	104		146N	20	19	120
130N	32	14	106		148N	11	10	60
132N	23	14	102		L95E - 102N	35	15	136
134N	28	18	192		104N	17	9	108
136N	7	10	84		106N	47	16	140
138N	10	11	80		108N	41	19	158
140N	20	20	120		110N	27	13	114
142N	28	21	120		112N	44	17	164
144N	15	26	126		114N	31	14	114
146N	20	20	116		116N	37	14	148
148N	29	21	144		118N	29	11	100
L85E - 106N	28	15	154		120N	34	11	128
108N	20	15	112		122N	15	4	62
110N	52	21	160		124N	46	18	194
112N	20	17	118		126N	26	12	112
114N	32	16	174		128N	32	8	134
116N	65	23	176		130N	32	14	124
118N	25	12	114		132N	33	16	124
120N	41	18	176		134N	32	16	102
122N	8	5	46		136N	33	18	104
124N	11	16	170		138N	30	12	108
126N	25	13	112		140N	33	10	44
128N	29	14	124		142N	10	22	192
130N	24	13	76		144N	20	8	82
132N	28	15	92		146N	22	14	122
134N	30	14	88		148N	17	16	106
136N	27	21	146		150N	13	14	92
138N	20	6	66		152N	6	15	112
140N	12	13	104		154N	1	< 2	4

Geochemical Lab Report

Report No. 27 - 781

Page No. 2

SAMPLE NO.	Cu ppm	Pb ppm	Zn ppm		SAMPLE NO.	Cu ppm	Pb ppm	Zn ppm	
L95E - 156N	5	< 2	8		L105E - 138N	25	13	106	
158N	19	7	40		140N	31	13	78	
160N	8	3	36		142N	26	18	148	
162N	17	14	114		144N	38	21	144	
164N	30	19	80		146N	38	16	116	
166N	7	2	24		148N	18	14	112	
168N	1	< 2	32		152N	10	2	48	
170N	5	< 2	16		154N	10	8	52	
172N	6	< 2	22		156N	22	12	94	
174N	22	12	94		158N	3	< 2	10	
176N	14	8	48		160N	29	48	182	
178N	16	4	32		162N	10	3	28	
180N	5	< 2	22		164N	5	< 2	16	
182N	17	< 2	22		166N	25	7	60	
184N	11	2	36		168N	11	2	46	
188N	22	2	38		170N	35	18	120	
190N	2	< 2	6		172N	29	12	108	
L105E - 102N	42	17	112		174N	17	5	44	
104N	44	16	90		176N	20	< 2	16	
106N	46	11	106		178N	15	< 2	24	
108N	30	16	104		180N	7	< 2	6	
110N	31	13	108		182N	9	11	70	
112N	48	18	172		184N	1	< 2	8	
114N	40	18	112		186N	15	6	52	
116N	38	16	116		190N	22	11	66	
118N	36	15	110		L115E - 102N	32	12	164	
120N	35	13	108		104N	28	12	130	
122N	33	14	106		106N	51	23	142	
124N	56	16	120		108N	24	9	104	
126N	38	20	140		110N	29	10	100	
128N	39	18	116		112N	27	14	90	
130N	40	14	120		114N	24	11	94	
132N	25	16	112		116N	31	14	104	
134N	29	14	80		118N	27	12	88	
136N	29	14	92		120N	21	7	58	



## Geochemical Lab Report

Report No. 27 - 781

Page No. 4

SAMPLE NO.	Cu ppm	Pb ppm	Zn ppm		SAMPLE NO.	Cu ppm	Pb ppm	Zn ppm
L125E - 146+50N	20	12	100		L130E - 120N	41	16	140
147N	13	12	132		122N	36	18	100
147+50N	16	14	142		124N	25	12	96
148N	12	10	100		126N	22	11	88
148+50N	19	17	112		128N	22	10	72
149+50N	19	13	128		130N	18	11	80
150N	35	17	162		132N	22	12	84
152N	26	16	80		134N	25	15	84
154N	17	4	46		136N	18	9	66
156N	29	16	120		138N	26	16	104
158N	20	16	144		138+50N	26	13	84
160N	26	26	138		139N	12	10	70
162N	10	12	118		139+50N	35	16	114
164N	4	< 2	8		140N	24	10	78
168N	15	< 2	20		140+50N	18	11	88
170N	12	< 2	10		141N	23	12	94
172N	9	< 2	12		141+50N	30	28	120
174N	17	< 2	28		142N	26	36	150
176N	20	10	68		142+50N	17	14	90
178N	22	5	32		145+15N	29	19	470
180N	13	5	48		145+50N	25	21	156
182N	26	16	92		146N	19	34	178
184N	18	8	58		146+50N	14	12	92
186N	11	2	6		147N	25	16	82
188N	18	4	28		147+50N	16	10	50
190N	16	5	44		148N	11	6	30
L130E - 102N	24	10	102		148+50N	26	11	82
104N	20	7	118		149N	27	15	90
106N	41	21	150		149+50N	19	8	84
108N	20	13	86		150N	34	16	100
110N	32	11	100		L135E - 102N	47	26	164
112N	16	8	72		104N	19	8	104
114N	32	13	94		106N	31	12	120
116N	23	12	92		108N	12	< 2	26
118N	32	12	74		110N	15	4	43

# BONDAR-C. EGG & COMP, NY LTD.

APPENDIX "E" x.

## Geochemical Lab Report

Report No. 27 - 781

Page No. 5

SAMPLE NO.	Cu ppm	Pb ppm	Zn ppm		SAMPLE NO.	Cu ppm	Pb ppm	Zn ppm	
L135E - 112N	14	3	44		L135E - 154N	14	22	124	
114N	43	18	166		156N	13	18	149	
116N	26	11	80		158N	4	< 2	5	
118N	30	12	86		160N	1	< 2	6	
120N	35	14	78		162N	17	10	56	
122N	28	11	80		164N	12	27	176	
124N	25	10	82		166N	12	26	128	
126N	22	10	68		168N	22	18	140	
128N	20	8	72		170N	27	12	70	
130N	16	8	80		172N	12	5	44	
132N	21	10	72		174N	28	18	120	
134N	22	7	100		176N	18	14	94	
136N	14	10	72		178N	23	15	95	
138N	13	2	17		180N	35	18	118	
140N	22	37	128		182N	21	8	36	
140+50N	20	24	96		184N	10	3	20	
141N	36	94	420		186N	24	13	52	
141+50N	32	95	420		188N	25	17	104	
142N	32	62	340		190N	13	2	52	
142+50N	18	24	116		L140E - 102N	24	12	86	
143N	30	36	232		104N	42	14	132	
143+50N	21	14	76		106N	30	14	160	
144N	15	14	86		108N	16	9	76	
145N	17	14	100		110N	41	17	132	
145+50N	20	14	108		112N	36	15	100	
146N	15	2	80		114N	50	22	144	
146+50N	32	16	146		116N	23	10	84	
147N	31	7	64		118N	25	11	72	
147+50N	29	17	105		120N	30	15	103	
148N	13	7	76		122N	27	14	104	
148+50N	20	10	104		124N	23	13	64	
149N	17	4	27		126N	24	14	82	
149+50N	16	< 2	8		128N	23	8	68	
150N	43	20	140		130N	22	12	83	
152N	19	< 2	16		132N	29	20	88	

Geochemical Lab Report

Report No. 27 - 781

Page No. 6

SAMPLE NO.	Cu ppm	Pb ppm	Zn ppm		SAMPLE NO.	Cu ppm	Pb ppm	Zn ppm	
L140E - 134N	29	18	96		L145E - 114N	26	13	116	
136N	23	27	100		116N	27	9	81	
138N	25	31	92		118N	20	11	76	
140N	17	14	93		120N	20	8	60	
142N	20	15	108		122N	30	13	76	
144N	15	13	92		124N	28	10	84	
146N	19	12	85		126N	26	12	88	
148N	29	12	65		128N	28	20	112	
150N	14	24	108		130N	10	4	32	
152N	9	10	46		132N	34	52	208	
154N	24	16	84		134N	26	27	144	
156N	7	< 2	26		136N	23	29	148	
158N	20	< 2	40		138N	22	31	148	
160N	19	4	36		140N	20	17	140	
162N	7	3	8		142N	10	27	62	
164N	9	< 2	28		144N	4	5	46	
166N	16	11	81		146N	15	10	28	
168N	29	16	116		148N	3	9	44	
170N	28	20	108		150N	2	2	20	
172N	23	14	84		152N	23	18	124	
174N	18	12	92		154N	29	11	96	
176N	21	13	102		156N	18	4	44	
178N	12	5	34		158N	23	11	83	
180N	16	4	54		160N	17	4	40	
182N	23	14	84		162N	16	7	66	
184N	39	16	110		164N	14	2	32	
186N	4	2	12		166N	12	4	48	
188N	29	18	98		168N	20	11	92	
190N	15	2	30		170N	12	< 2	32	
L145E - 102N	46	13	132		172N	31	13	112	
104N	15	8	64		174N	15	5	86	
106N	27	13	132		176N	26	14	96	
108N	27	13	136		178N	10	2	32	
110N	49	20	148		180N	13	2	42	
112N	35	14	116		182N	35	18	120	



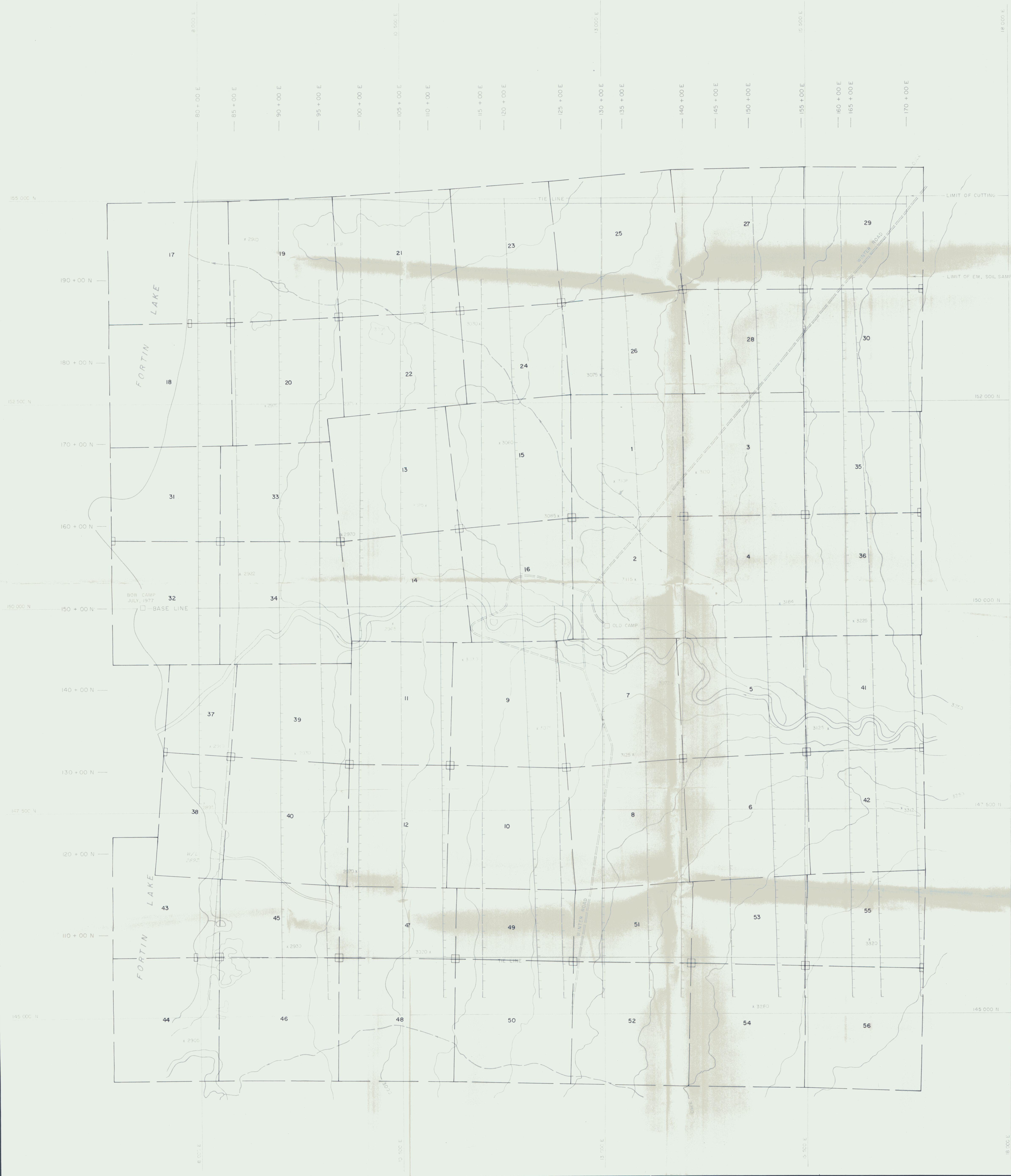
Geochemical Lab Report

Report No. 27 - 781

Page No. 8

SAMPLE NO.	Cu ppm	Pb ppm	Zn ppm		SAMPLE NO.	Cu ppm	Pb ppm	Zn ppm
L155E - 144N	28	13	70		L160E - 126N	25	34	202
146N	27	12	76		128N	4	9	42
148N	13	13	88		130N	6	10	40
150N	17	6	82		132N	11	14	96
152N	19	9	88		134N	16	8	44
154N	26	15	112		136N	6	2	20
156N	26	12	81		138N	21	8	16
158N	18	7	56		140N	18	11	61
160N	20	11	106		142N	14	12	66
162N	28	18	122		144N	6	2	26
164N	25	14	96		146N	29	14	102
166N	19	10	72		148N	16	7	68
168N	30	12	100		150N	11	4	44
170N	29	16	116		152N	19	10	104
172N	20	11	108		154N	17	11	92
174N	22	10	62		156N	20	12	76
176N	18	10	66		158N	29	16	100
178N	16	8	48		160N	15	5	63
180N	23	4	72		162N	18	11	91
182N	7	2	46		164N	22	12	98
184N	7	2	28		166N	13	7	49
186N	24	11	96		168N	14	6	42
188N	18	2	16		170N	17	15	116
190N	5	< 2	20		172N	22	11	92
L160E - 104N	40	14	120		174N	40	22	144
106N	36	13	108		176N	42	12	66
108N	46	16	101		178N	21	11	56
110N	33	12	116		180N	23	17	64
112N	36	16	106		182N	33	12	40
114N	24	11	100		184N	34	17	84
116N	28	11	92		186N	16	12	80
118N	22	8	86		188N	28	12	52
120N	18	9	80		190N	22	17	60
122N	18	7	60		L165E - 152N	20	10	78
124N	32	34	180		154N	21	14	98





**EXPLANATION**

29 BOB CLAIM NUMBER  
 CLAIM POST LOCATION

CUT LINES

FLAGGED LINES

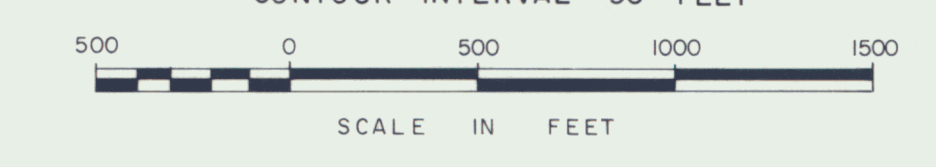
NOTE: ALL CLAIMS SHOWN ARE BOB PROPERTY MINERAL CLAIMS

OGILVIE JOINT VENTURE

**CLAIM MAP**

BOB PROPERTY

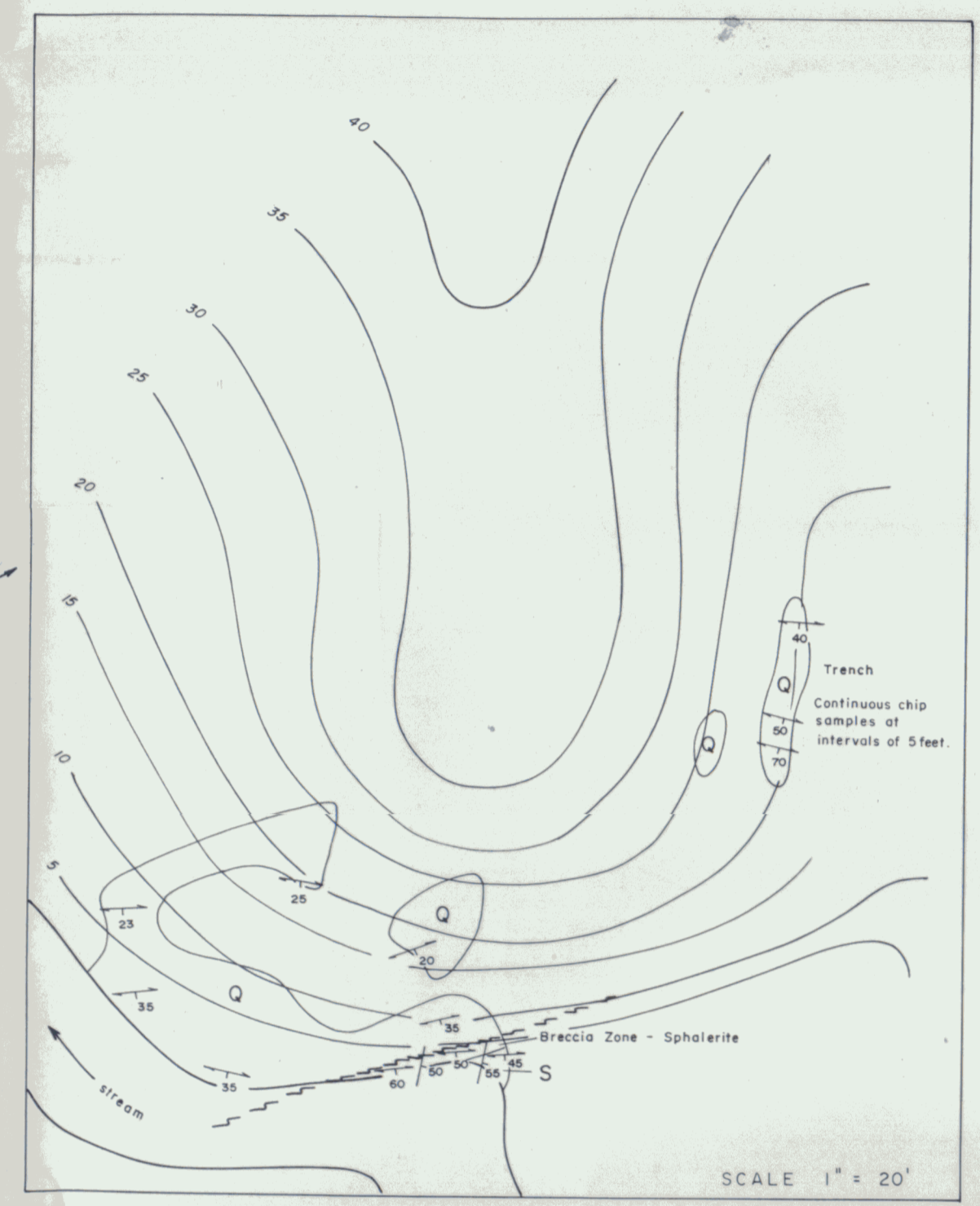
FORTIN LAKE AREA, (NTS 105-G-15)  
 WATSON LAKE MINING DISTRICT, YUKON TERRITORY  
 LAT: 61° 57' N LONG: 130° 30' W  
 CONTOUR INTERVAL = 50 FEET



BY  
 CORDILLERAN ENGINEERING LTD.  
 1418 - 355 BURNARD STREET  
 VANCOUVER, B.C. V6C 2G8

NOVEMBER, 1977

PLATE I



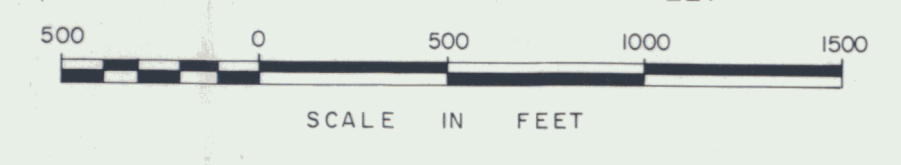
**LEGEND**

- Q QUARTZOSE PHYLLITE - Light brown to buff, quartz-rich, quartz-sericite phyllite. Quartz veins contain disseminated galena, chalcopyrite, pyrite and sphalerite.
- S SERICITE PHYLLITE - Greyish-green with dark green laminations. Barren quartz veins. Local minor disseminated pyrite cubes.
- BEDDING ATTITUDE
- FOLIATION ATTITUDE
- FAULT: actual, inferred

LOWER ORDOVICIAN ?

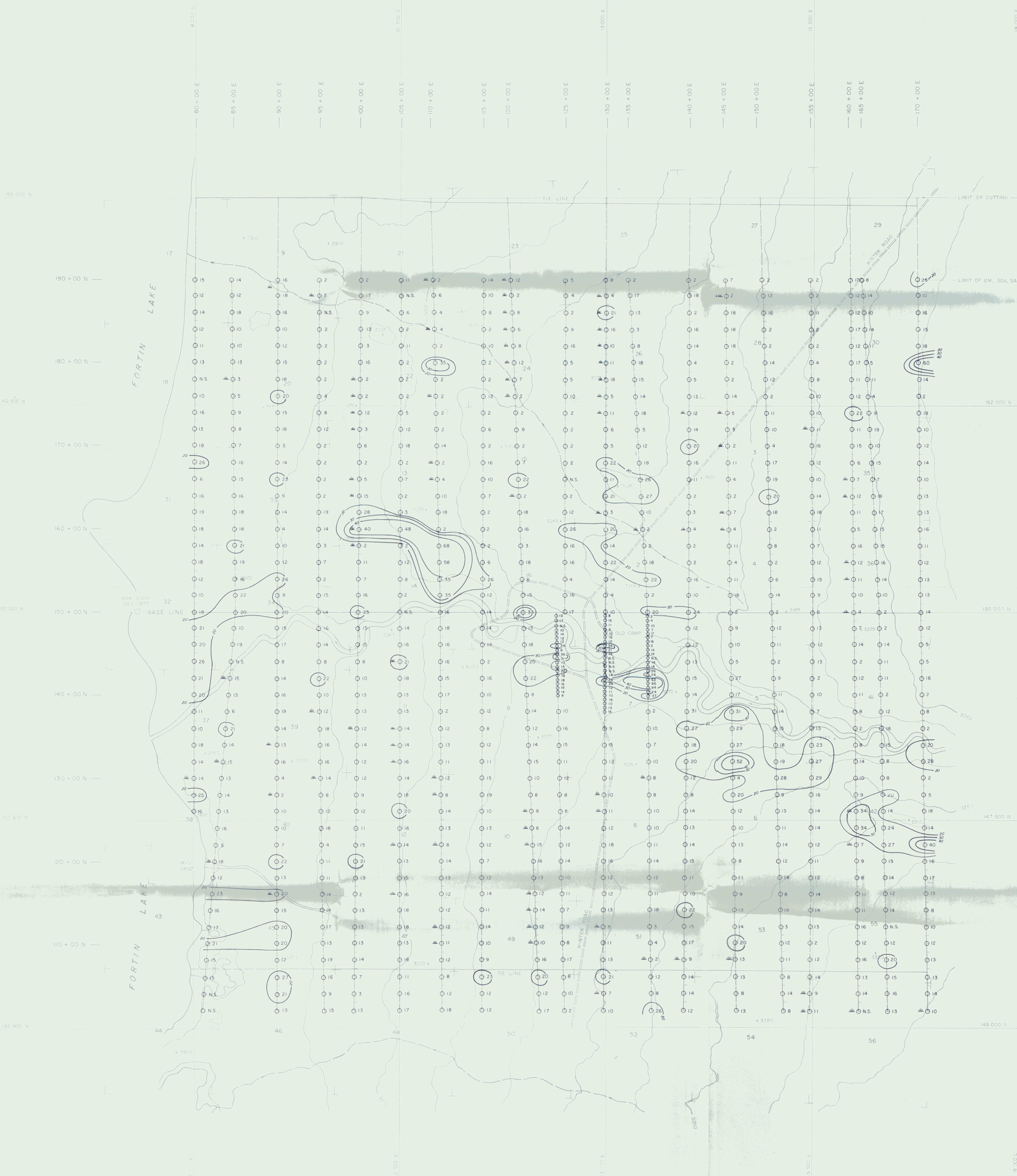
**OGILVIE JOINT VENTURE  
GEOLOGICAL MAP**

**BOB PROPERTY**  
 FORTIN LAKE AREA, (N.T.S. 105-G-15)  
 WATSON LAKE MINING DISTRICT, YUKON TERRITORY  
 LAT: 61° 57' N LONG: 130° 30' W  
 CONTOUR INTERVAL = 50 FEET



BY  
 CORDILLERAN ENGINEERING LTD.  
 1418 - 355 BURNARD STREET  
 VANCOUVER, B.C. V6C 2G8

NOVEMBER, 1977



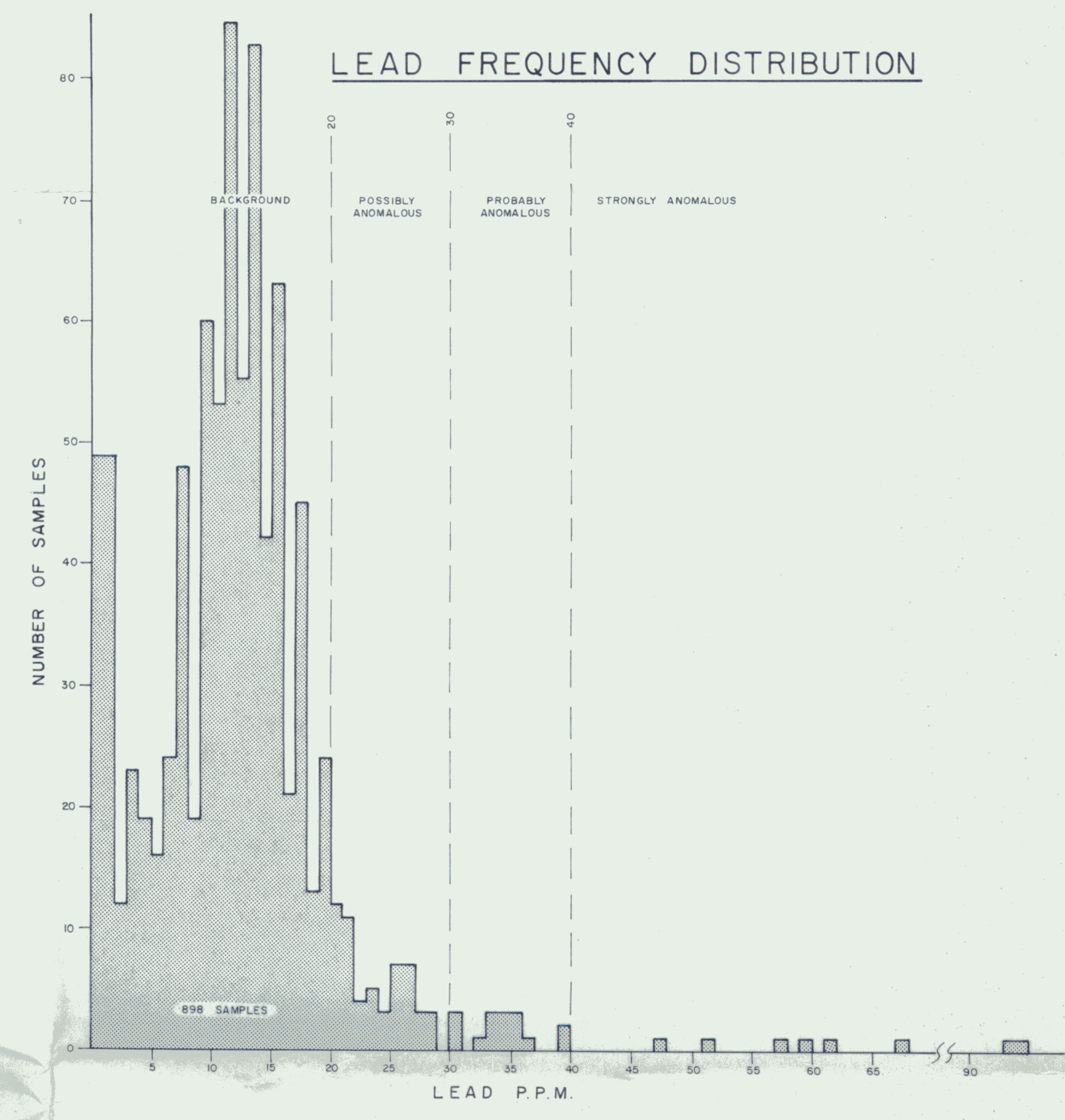
**EXPLANATION**

- 40 SOIL SAMPLE LOCATION AND LEAD VALUE IN P.P.M. (PARTS PER MILLION)
- N.S. NO SAMPLE
- ▲ SWAMP
- CUT LINE
- - - FLAGGED LINE

**LEAD CONCENTRATION IN P.P.M.**

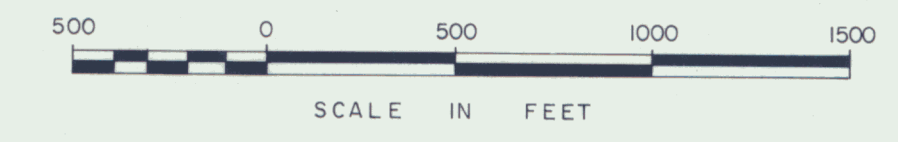
- BACKGROUND ..... <20
  - POSSIBLY ANOMALOUS ..... 20 to 29
  - PROBABLY ANOMALOUS ..... 30 to 39
  - STRONGLY ANOMALOUS ..... ≥ 40
- CONTOUR INTERVAL FOR LEAD: 20, 30, 40

**LEAD FREQUENCY DISTRIBUTION**

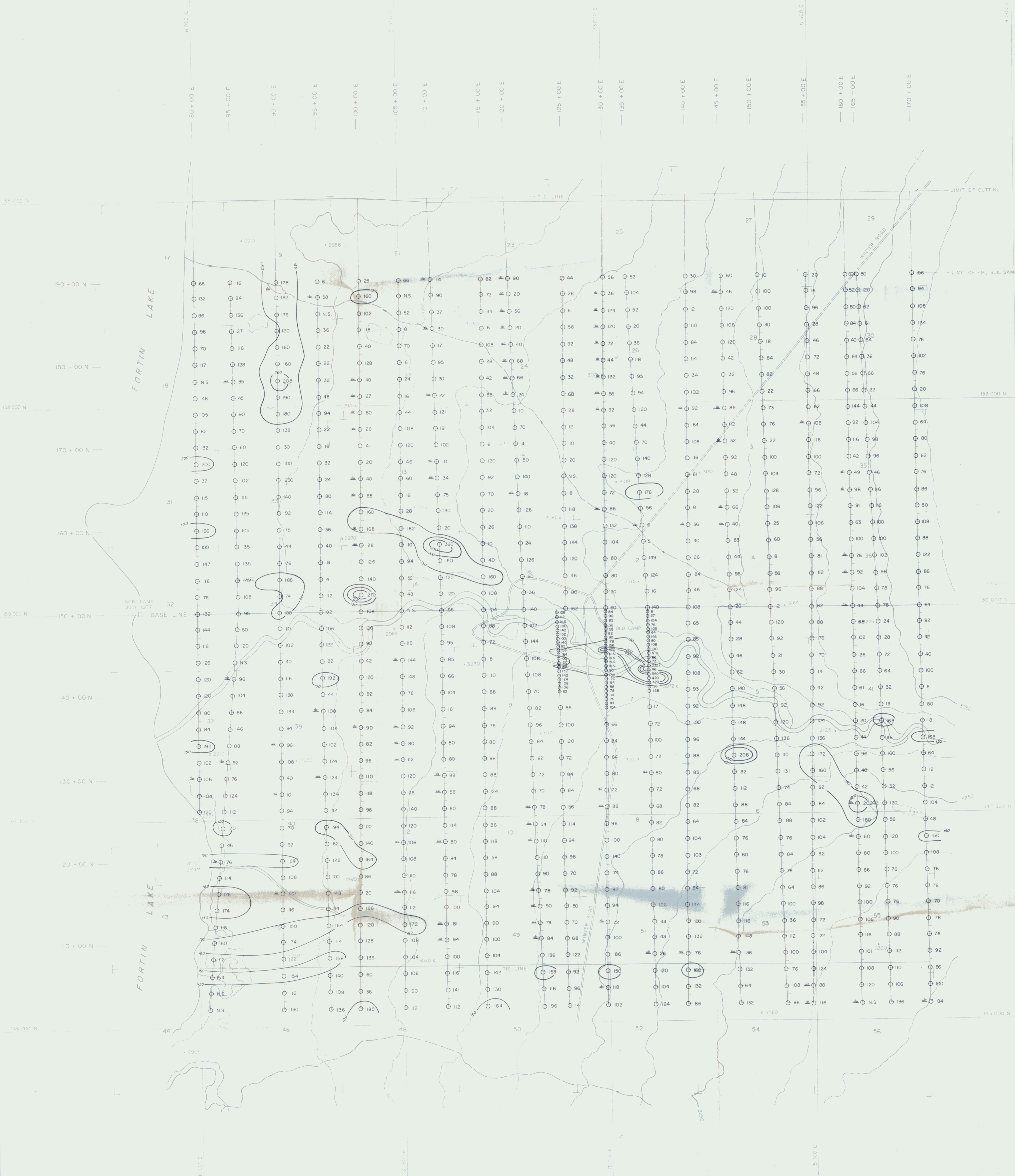


OGILVIE JOINT VENTURE  
**GEOCHEMICAL SOIL SAMPLES**  
 LEAD VALUES IN P.P.M.  
 BOB PROPERTY

FORTIN LAKE AREA, (NTS I05-G-15)  
 WATSON LAKE MINING DISTRICT, YUKON TERRITORY  
 LAT: 61° 57' N LONG: 130° 30' W  
 CONTOUR INTERVAL = 50 FEET



BY  
 CORDILLERAN ENGINEERING LTD.  
 1418 - 355 BURNARD STREET  
 VANCOUVER, B.C. V6C 2G8

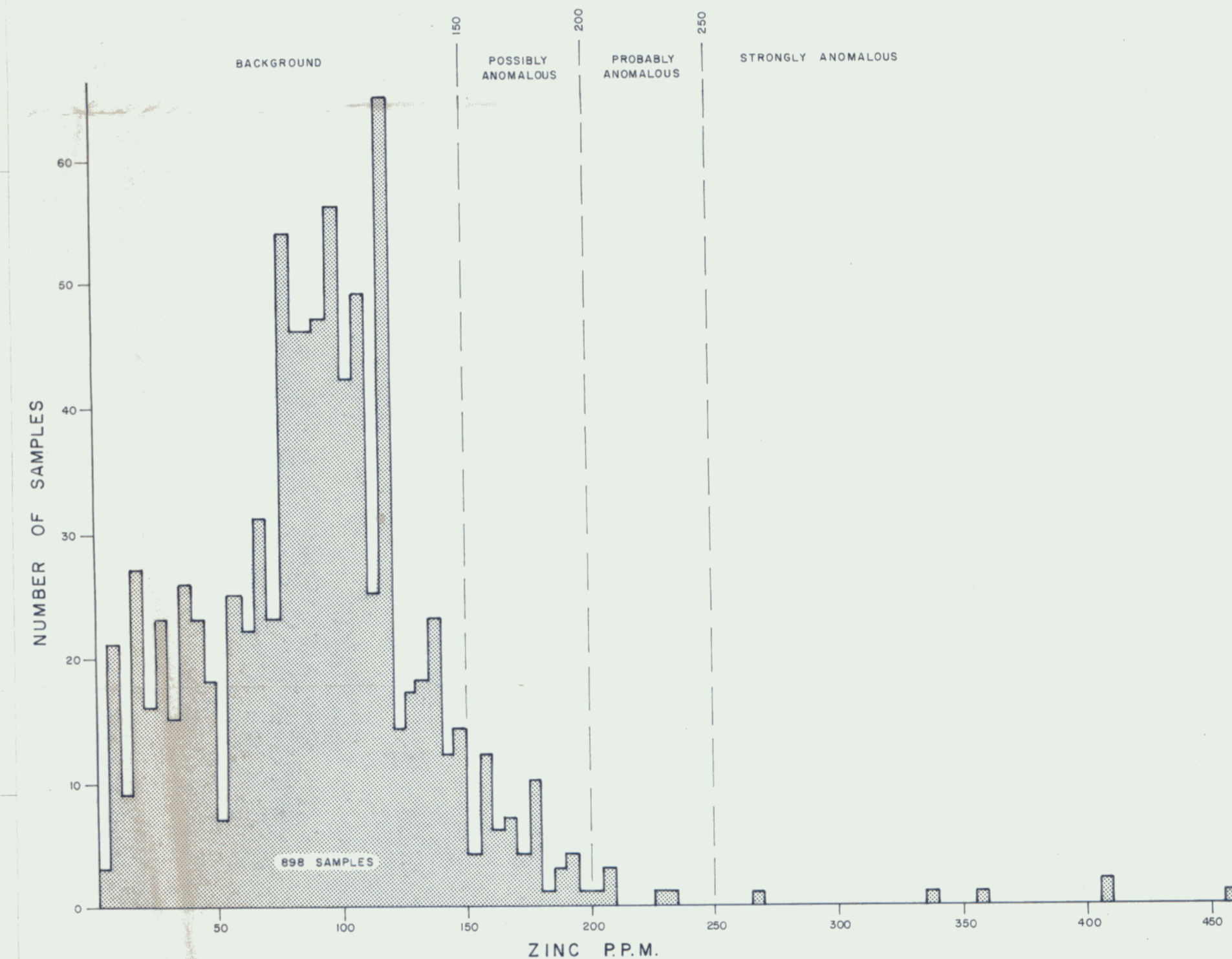


**EXPLANATION**

- 150 SOIL SAMPLE LOCATION AND ZINC VALUE IN P.P.M. (PARTS PER MILLION)
- N.S. NO SAMPLE
- ▲ SWAMP
- CUT LINE
- - - FLAGGED LINE

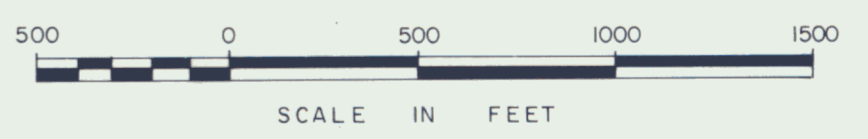
**ZINC CONCENTRATION IN P.P.M.**

- BACKGROUND ..... <150
  - POSSIBLY ANOMALOUS ..... 150 to 199
  - PROBABLY ANOMALOUS ..... 200 to 249
  - STRONGLY ANOMALOUS ..... ≥ 250
- CONTOUR INTERVAL FOR ZINC: 150, 200, 250

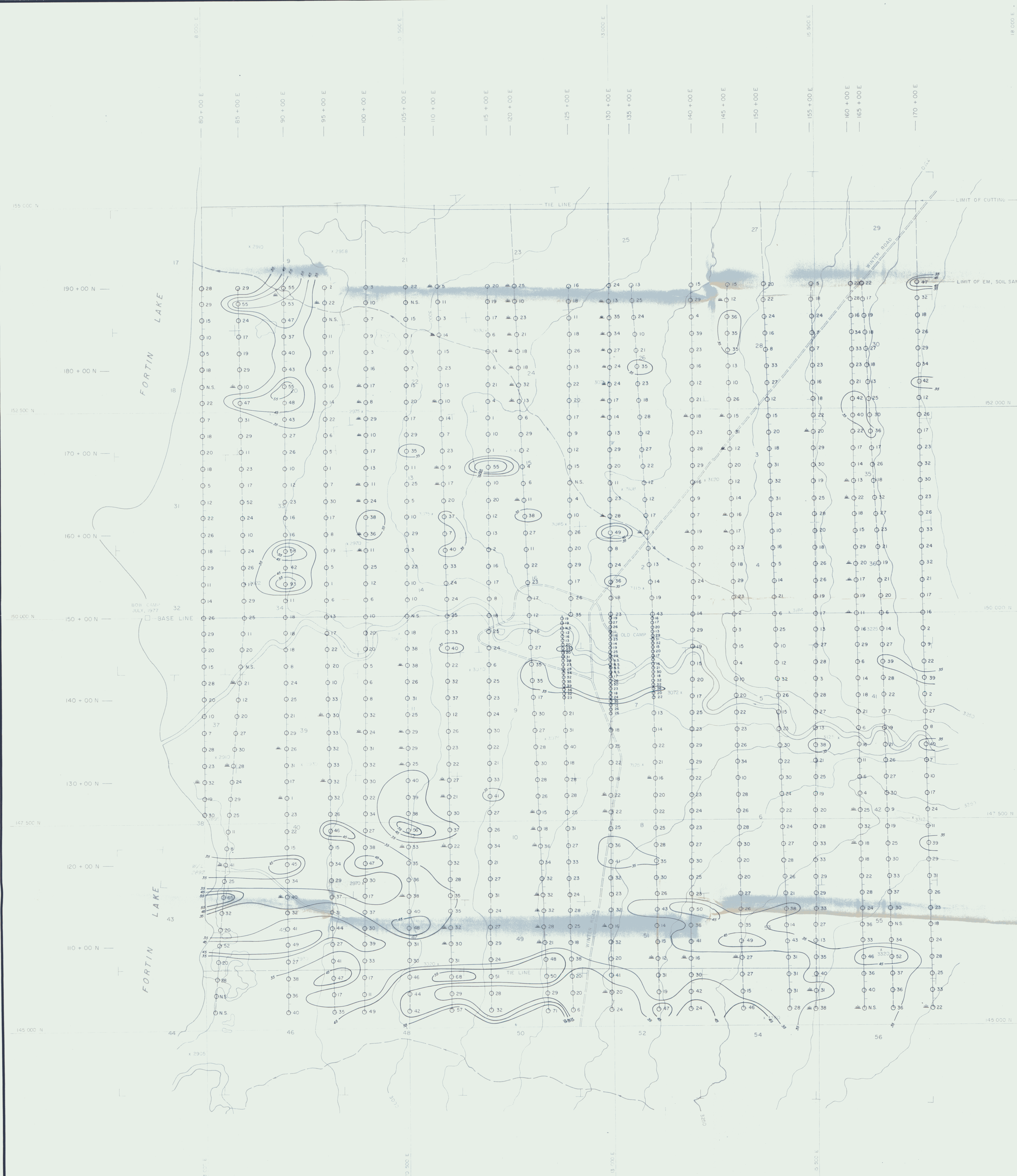


OGILVIE JOINT VENTURE  
**GEOCHEMICAL SOIL SAMPLES**  
 ZINC VALUES IN P.P.M.  
 BOB PROPERTY

FORTIN LAKE AREA, (NTS 105-G-15)  
 WATSON LAKE MINING DISTRICT, YUKON TERRITORY  
 LAT: 61° 57' N LONG: 130° 30' W  
 CONTOUR INTERVAL = 50 FEET



BY  
 CORDILLERAN ENGINEERING LTD.  
 1418 - 355 BURRARD STREET  
 VANCOUVER, B.C. V6C 2G8



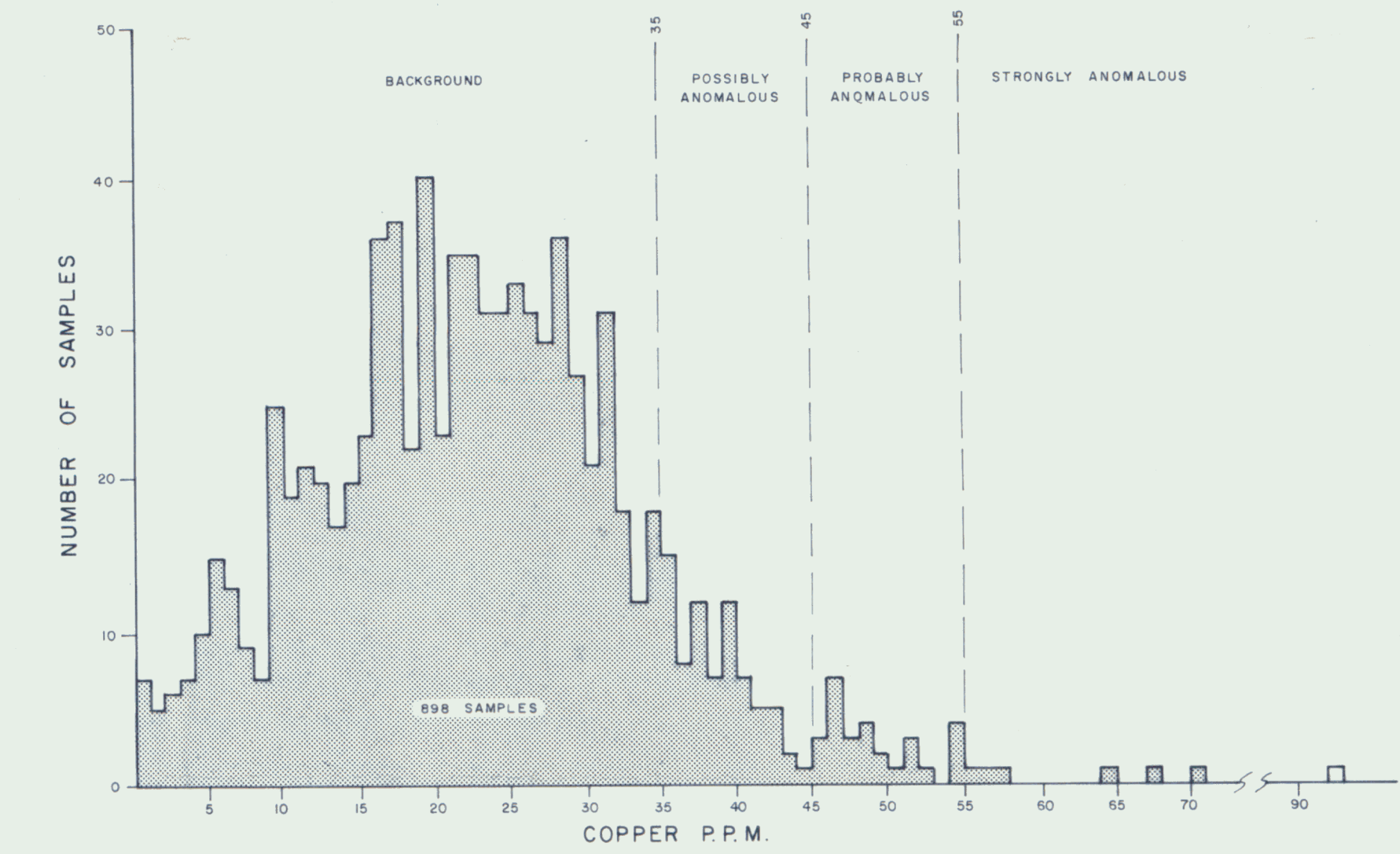
**EXPLANATION**

- 50 SOIL SAMPLE LOCATION AND COPPER VALUE IN P.P.M. (PARTS PER MILLION)
- N.S. NO SAMPLE
- ▲ SWAMP
- CUT LINE
- - - FLAGGED LINE

**COPPER CONCENTRATION IN P.P.M.**

- BACKGROUND . . . . . < 35
  - POSSIBLY ANOMALOUS . . . . . 35 to 44
  - PROBABLY ANOMALOUS . . . . . 45 to 54
  - STRONGLY ANOMALOUS . . . . . ≥ 55
- CONTOUR INTERVAL FOR COPPER : 35, 45, 55

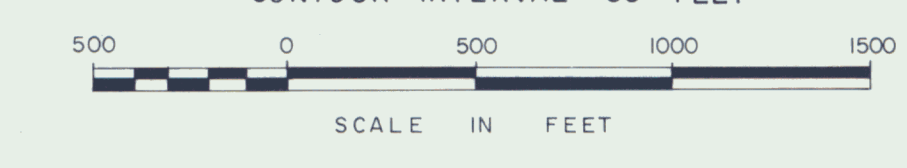
**COPPER FREQUENCY DISTRIBUTION**



**OGILVIE JOINT VENTURE  
GEOCHEMICAL SOIL SAMPLES  
COPPER VALUES IN P.P.M.**

**BOB PROPERTY**

FORTIN LAKE AREA, (N.T.S. 105-G-15)  
WATSON LAKE MINING DISTRICT, YUKON TERRITORY  
LAT: 61° 57' N LONG: 130° 30' W  
CONTOUR INTERVAL = 50 FEET

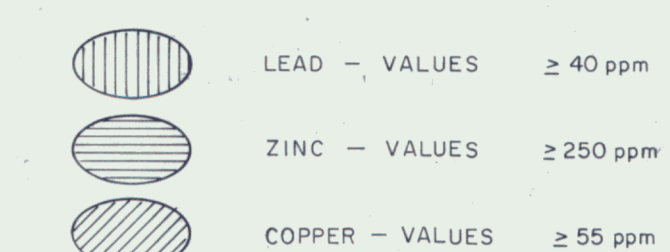


BY  
CORDILLERAN ENGINEERING LTD.  
1418 - 355 BURNARD STREET  
VANCOUVER, B.C. V6C 2G8

**EXPLANATION**

**GEOCHEMICAL SOIL SURVEY**

**ANOMALIES**

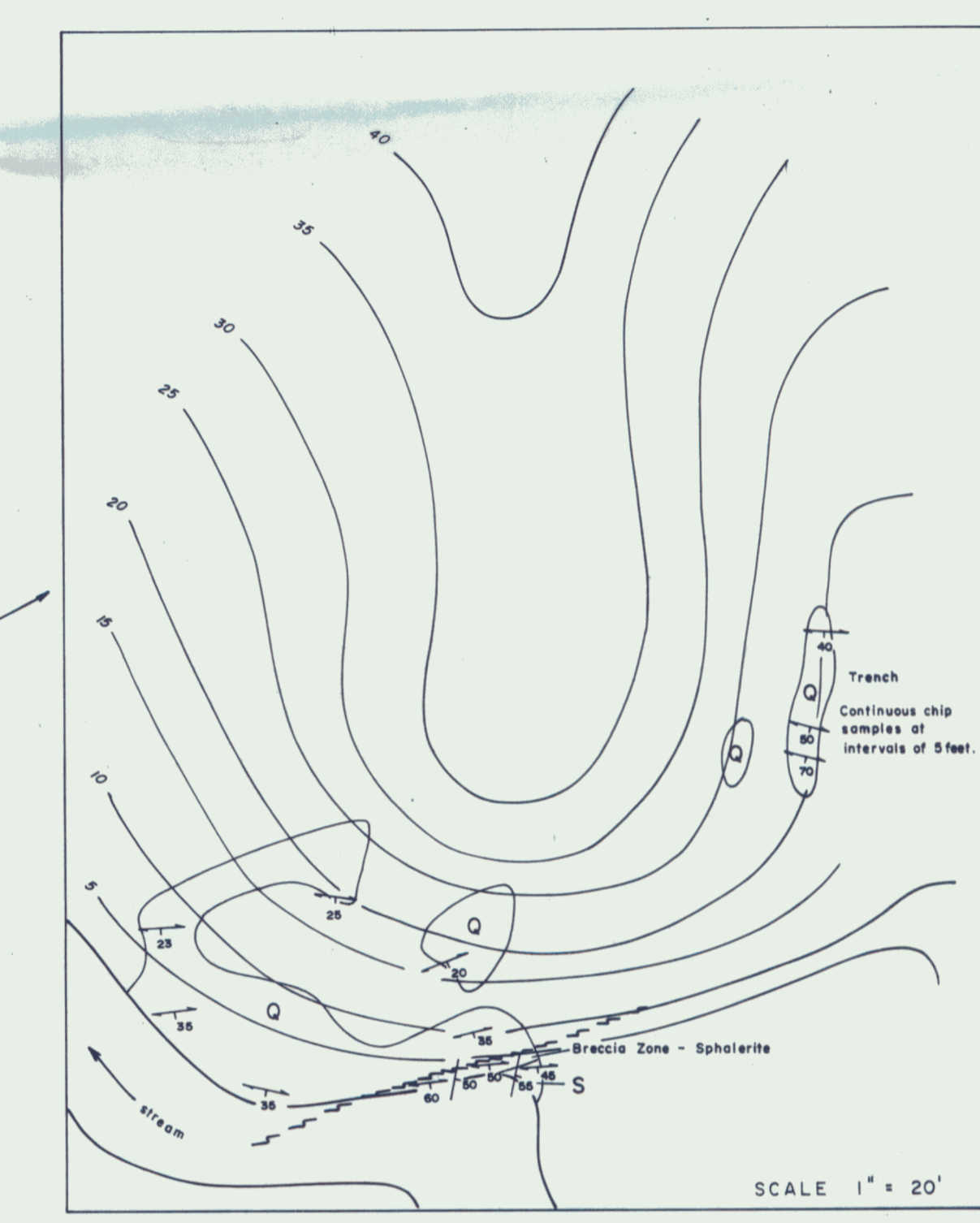


	Pb	Zn	Cu
BACKGROUND	< 20	< 150	< 35
POSSIBLY ANOMALOUS	20 - 29	150 - 199	35 - 44
PROBABLY ANOMALOUS	30 - 39	200 - 249	45 - 54
STRONGLY ANOMALOUS	$\geq 40$	$\geq 250$	$\geq 55$

**MAGNETOMETER SURVEY**

900 — MAGNETOMETER CONTOUR, READINGS IN GAMMAS

NOTE: ONLY HIGH VALUES (>900 GAMMAS) AND LOW VALUES (0 GAMMAS) ARE CONTOURED



NOTE: Contours indicate feet above stream level

**LEGEND**

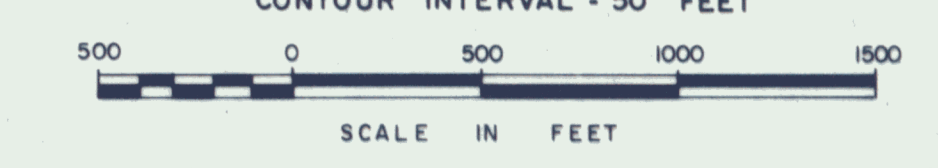
- Q QUARTZOSE PHYLLITE - Light brown to buff, quartz-rich, quartz-sericite phyllite. Quartz veins contain disseminated galena, chalcocopyrite, pyrite and sphalerite.
- S SERICITE PHYLLITE - Greyish-green with dark green laminations. Barren quartz veins. Local minor disseminated pyrite cubes.

- 30 BEDDING ATTITUDE
- 35 FOLIATION ATTITUDE
- FAULT: actual, inferred

**OGILVIE JOINT VENTURE  
 COMPILATION MAP**

**BOB PROPERTY**

FORTIN LAKE AREA, (NTS 105-G-15)  
 WATSON LAKE MINING DISTRICT, YUKON TERRITORY  
 LAT: 61° 57' N LONG: 130° 30' W  
 CONTOUR INTERVAL: 50 FEET



BY  
 CORDILLERAN ENGINEERING LTD.  
 1418 - 355 BURNARD STREET  
 VANCOUVER, B.C. V6C 2G8

