

UMEX

UNION MINIÈRE EXPLORATIONS
AND MINING CORPORATION LIMITED

Suite 200, 4299 Canada Way, Burnaby, B.C. V5G 1H4
Telephone (604) 437-9491

ASSESSMENT REPORT
GEOCHEMICAL SOIL SURVEY
ON THE
LEP 1-28 MINERAL CLAIMS
(Record Nos. YA6489-YA6516)

Mayo Mining District, Yukon
N.T.S. 116A/13
Latitude 64°54'N
Longitude 137°54'W

by
Colin V. Dyson, P.Eng.

Work Done: July 8 to July 14, 1977

Date: August 31, 1977

Owner: Union Miniere Explorations and
Mining Corporation Limited

This report has been examined by the Geological Evaluation Unit and is recommended to the Commissioner to be considered as representation work in the amount of

\$2800.00

[Handwritten Signature]

~~Resident Geologist or
Resident Mining Engineer~~

Considered as representation work under Section 53 (4) Yukon Quartz Mining Act.

[Handwritten Signature]
B. R. BAXTER

Supervising Mining Recorder

[Handwritten Signature]
Commissioner of Yukon Territory



090211

CONTENTS

	Page
INTRODUCTION	1
PROPERTY	1
GENERAL GEOLOGY	1
GEOCHEMICAL SOIL SURVEY	1
Methods	1
Grid Control	2
Analytical Treatment of Soil Samples	2
Results	2
CONCLUSIONS	2
APPENDIX I — STATEMENT OF COSTS	
APPENDIX II — STATEMENT OF PERSONNEL	

Figure

following page

FIGURE 1 - Location Map, Lep 1-28 Claims, 1/250,000.	1
FIGURE 2 - Lep Claims, Lead Geochemistry, 1"=1000 ft.. . . .	in pocket

ASSESSMENT REPORT

GEOCHEMICAL SOIL SURVEY ON THE LEP 1-28 MINERAL CLAIMS

INTRODUCTION

During the period July 8 to July 14, 1977 a geochemical soil survey was completed over the LEP 1-28 mineral claims in the Mayo Mining District, Yukon. The claims are located approximately thirteen miles east of Chapman Lake at latitude $64^{\circ}54'N$ and longitude $137^{\circ}54'W$ and are accessible via helicopter.

A geochemical soil survey was completed in the field by Mr. J. Reid and Mr. L. Pettet under the supervision of Mr. C.V. Dyson, P.Eng., who was on the property on July 8, 1977 to organize the survey and study the local geology.

PROPERTY

Relevant details of claim status are as follows:

Claim Name	Grant Numbers	Expiry Date
LEP 1-28	YA6489-YA6516	August 27, 1977

The claims are owned by Union Miniere Explorations and Mining Corporation Limited for whom the survey was completed.

GENERAL GEOLOGY

The claim area is regionally mapped by the G.S.C. (Green, 1972)¹ as underlain by Unit 13 Middle Devonian to Carboniferous black shale, argillite, and slate, platy black limestone and chert. The sediments regionally strike east-west with gentle to moderate north or south dips, and are folded in a predominantly east-west series of anticlines and synclines.

GEOCHEMICAL SOIL SURVEY

Methods

A total of 294 soil samples were collected over 11.14 miles of line and

¹G.S.C. Memoir 364, Larsen Creek Geology Map 1283A, Green, 1972.



FIGURE 1

LOCATION MAP

LEP 1-28 CLAIMS

1/250,000

subsequently analysed for total lead. At each sample site a hole was dug with a mattock and 4-6 ounces of "B" horizon soil (where available) collected and placed in a pre-labelled high wet strength Kraft sample bag.

Grid Control

A series of north-south sample lines were established at 1000 foot spacings across the claim area and immediate surrounds. Sample site stations were marked by coloured flagging at 100 foot spacings along the cross lines, with a picket station every 300 feet or third sample site on the lines. Sample site coordinates were marked on the appropriate flag or picket by felt marker pen. A topofoil chain² and compass were used to control distances, directions and to tie-in the grid with existing claim posts and obvious topographic features.

Analytical Treatment of Soil Samples

The samples were freighted to Dawson City, Yukon and analysed at a mobile laboratory of Acme Analytical Laboratories Ltd. The samples were dried in their respective sample bags at a temperature of 60°C, then sieved to -80 mesh through a nylon or stainless steel screen, digested for 1-1½ hours in aqua regia, bulked with deionized water, and analysed by atomic absorption.

Results

The lead values (Figure 2) are all uniformly low and are interpreted to reflect a single background population.

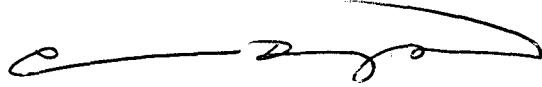
CONCLUSIONS

- (1) A geochemical soil survey for lead completed over the LEP 1-28 mineral claims did not outline any areas of anomalous values.

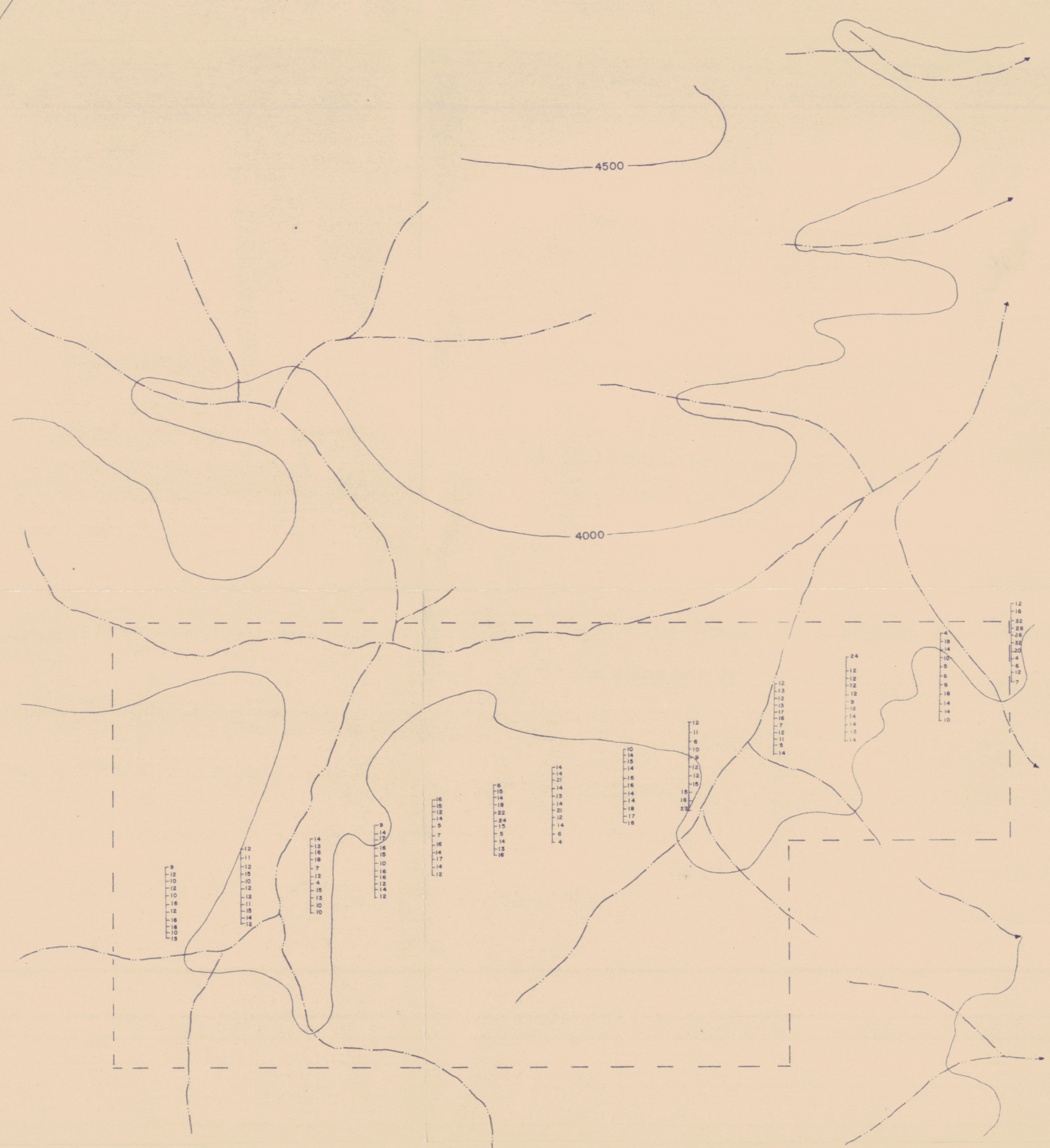
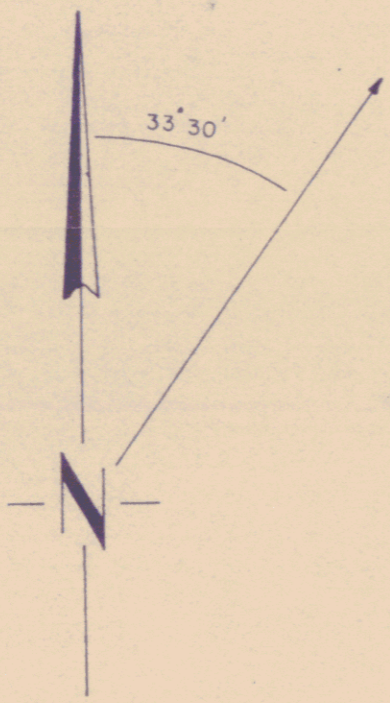
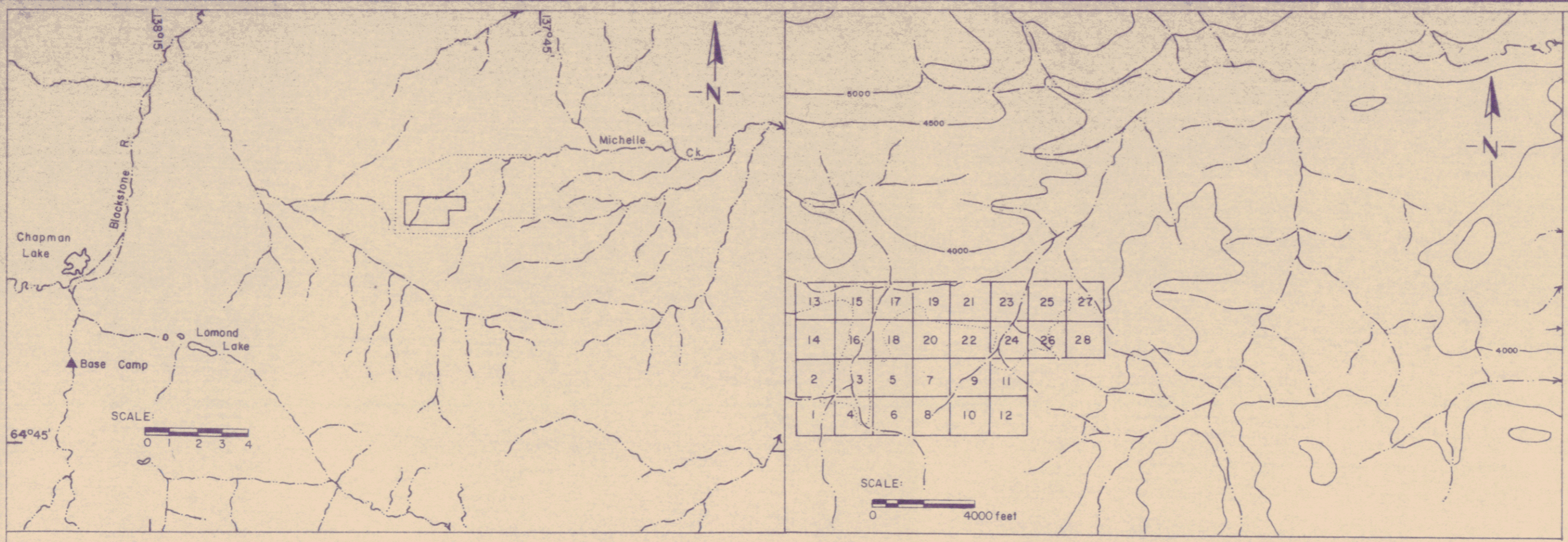
²The topofoil chain is a "lost" thread measuring device in which a counter accurately records in feet from 0 to 15,000 feet the length of thread unreeling from the unit when measuring a length or distance covered. The operator attaches the end of the thread to a fixed point, the counter is set a zero and the operator moves on foot carrying the topofoil chain. As the thread unwinds, the counter records the length. The counter readout is accurate to +0.2%; on completion of a measurement the counter is reset at zero. The bio-degradeable thread is cut and abandoned.

- (2) Further geochemical evaluation of the samples is warranted to assess the potential of the area for other elemental associations of economic interest.

Respectfully submitted,

A handwritten signature in black ink, appearing to read 'C.V. Dyson', with a long horizontal flourish extending to the right.

C.V. Dyson, P.Eng.



LEGEND

- Sample locations and lead values in ppm
- Streams
- Claim outline

To accompany an assessment report on a Geochemical Soil Survey on the LEP 1-28 mineral claims, dated August 31, 1977, by Colin V. Dyson, P.Eng.

figure 2

BLACKSTONE PROJECT 1977

**LEP CLAIMS
GEOCHEMISTRY OF
LEAD IN SOILS**

Scale: feet

UMEX CORPORATION LTD.

DRAWN BY: D.S. DATE: SEPT. 77 SURVEYED BY:	DWG. No.
--	----------