

GEOCHEMICAL AND GEOPHYSICAL REPORT

EROS CLAIM GROUP



Watson Lake Mining District
Yukon Territory



N.T.S. 105 F - 9



Latitude: 61° 36' N

Longitude: 132° 21'

This report has been examined by the Geological Evaluation Unit and is recommended to the Commission to be considered as representation work in the amount of \$3,400.00

By:

D.B. Craig

Resident Geologist or
Resident Mining Engineer

P. Dean

Considered as representation work under Section 53 (4) Yukon Quartz Mining Act.

CYPRUS ANVIL MINING CORPORATION

B.R. BAXTER
Supervising Mining Recorder

B.R. Baxter
Commissioner of Yukon Territory

August 25, 1977.

Field Work Done from July 19/77 - August 21/77.

090194

TABLE OF CONTENTS

	<u>Page</u>
LIST OF CLAIMS	
INTRODUCTION	1
GEOCHEMISTRY	1
GEOPHYSICS	2
PROPOSED EXPLORATION	2

FIGURES

Figure 1 - in pocket	- Location Map	- 1" : 4 miles
Figure 2 - bound in report	- Claim Map	- 1" : ½ mile
Figure 3 - in pocket	- Geochemical Values	- 1" : 400'
Figure 4 - in pocket	- Magnetometer Survey	- 1" : 400'
Figure 5 - in pocket	- C.E.M. Horizontal Shootback Survey	- 1" : 400'
Figure 6a - in pocket	- H.E.M. Horizontal Loop Survey - Values	- 1" : 400'
Figure 6b - in pocket	- H.E.M. Horizontal Loop Survey - Profiles	- 1" : 400'

APPENDICES

Appendix I - List of Personnel and Dates Worked on Claims
Appendix II - Summary of Costs
Appendix III - Affidavit Supporting Summary of Costs
Appendix IV - Vouchers Supporting Summary of Costs

LIST OF CLAIMS

<u>Claims</u>	<u>Grant Nos.</u>	<u>Recording Dates</u>
Eros 1 - 8	YA 617 - YA 624	August 23, 1976

CYPRUS ANVIL MINING CORPORATION PELLEY PROJECT

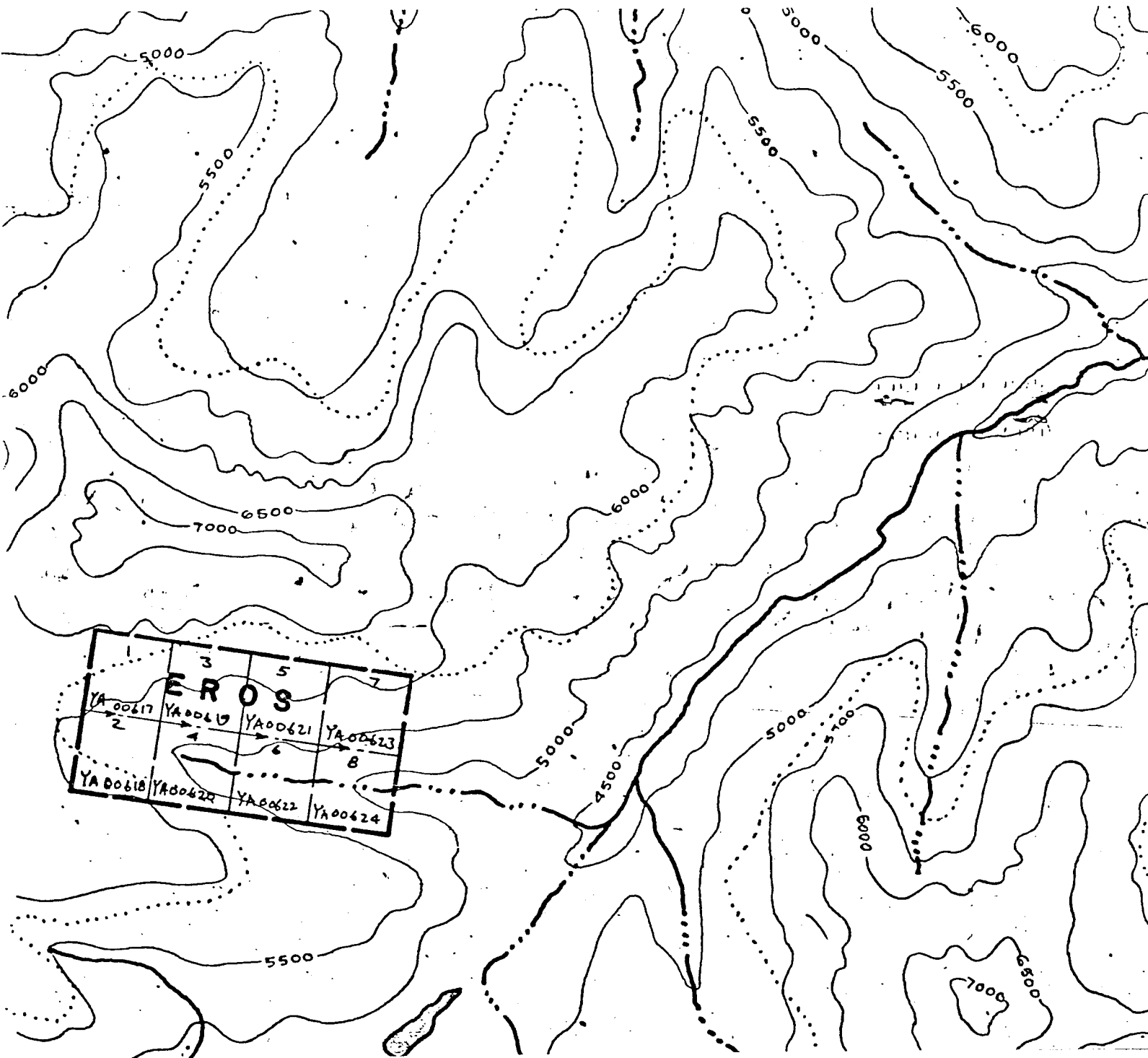


Figure 2

EROS CLAIM GROUP

N.T.S. 105 F 9

Scale: 1" = 1/2 Mile

Cyprus Anvil Mining Corporation

330, 355 Burrard Street
Vancouver, British Columbia
V6C 2G8
Telephone (604) 687-2586

Telex 04508594

GEOCHEMICAL AND GEOPHYSICAL REPORT

EROS CLAIM GROUP

INTRODUCTION

The EROS Claim Group, consisting of 8 contiguous claims, was staked in August, 1976, when geochemically anomalous gossan zones were discovered in an area underlain by shales and volcanics of Mississippian age. The discovery resulted from a regional prospecting program carried out under a joint venture agreement between Cyprus Anvil Mining Corporation and Hudson's Bay Oil and Gas. During 1977 the claim group was explored by geophysical and geochemical surveys.

The property is located on a tributary of the Ketzka River, approximately 3 miles south of Peak 7001, at latitude $61^{\circ} 36' N$ and longitude $132^{\circ} 21' W$. The nearest town to the property is Ross River, 27 miles to the north. Access to the claim group is possible only by helicopter at the moment, but a serviceable summer road is present in the Ketzka River valley, 5 miles to the east. If warranted, a six mile tote road could be built which would connect the EROS property with this Ketzka valley road.

GEOCHEMISTRY

Soil samples were taken on the claim group at 200 foot intervals on lines spaced 800 feet apart. The samples were analysed by atomic absorption methods after a nitric-perchloric acid digestion of the -80 mesh fraction. The analytical work was carried out by Acme Analytical Laboratories at their lab in Vancouver.

The results indicate the presence of strongly anomalous zinc values in soils from the overburden covered middle portion of the grid (Figure 3). The source of the anomalous metal values is unknown, but the highest values occur in areas where the soil has been cemented by limonite. Fragments of black shale occur in some of the soil sample holes, and it is possible that the source of the zinc lies within iron-rich black shales. Cat trenching or drilling will be necessary to confirm that this is the case.

GEOPHYSICS

Magnetic and electromagnetic surveys were carried out on the EROS grid. The magnetic survey (Figure 4) indicates that no magnetic anomalies occur on the property. The magnetic results are so flat, in fact, that it is not even possible to distinguish between the rock types which occur on the claims on the basis of magnetic background.


The entire grid was surveyed using CEM shootback E.M. methods (Figure 5), and Apex horizontal loop methods were used on a portion of the grid (Figure 6). The E.M. surveys picked up a large conductor which undoubtedly results at least in part from graphite in black shales. A sharp strong peak in the C.E.M. profiles on Lines 24E and 32E may indicate the presence of a sulphide conductor close to the contact of the black shales with overlying volcanic flows. This anomaly was checked with the Apex horizontal loop instrument, which confirmed the presence of a strong, flat-lying conductor close to the shale-volcanic contact.

PROPOSED EXPLORATION

The strong conductor on Lines 24E and 32E should be tested with hand trenching, cat trenching, or diamond drilling. Hand trenching should be attempted first, but is unlikely to be successful. A small BBS-1 drill capable of drilling 300 to 500 foot holes would probably be adequate for testing the geophysical and geochemical anomalies, and would be more practical than trying to

mobilize a cat into the property for such a small amount of work.

Respectfully submitted,



PETER DEAN.

August 25, 1977.

14 N	32/30/175	25/26/84	22/60/44	26/235/240	17/30/210	52/68/90	29/50/178	26/26/114
12 N	32/32/150	80/36/38	26/510/282	124/770/3650	9/28/132	24/30/68	40/48/240	22/24/120
10 N	39/30/168	32/30/68	22/40/70	52/480/1750	13/38/2600	25/30/470	50/102/515	16/12/098
8 N	31/26/128	54/72/132	29/34/62	40/380/600	9/28/132	13/30/200	6/6/11	15/22/120
6 N	54/58/200	30/118/130	25/36/98	35/510/585	32/54/5850	17/32/190	16/24/163	22/20/112
4 N	54/62/238	17/24/120	20/20/64	33/860/546	37/425/370	25/108/280	27/36/197	34/44/205
2 N	50/84/295	15/38/142	40/24/224	152/540/715	37/530/745	32/72/340	40/54/275	40/58/280
BL-0	47/112/330	32/42/300	23/20/115	32/70/239	30/84/335	35/66/205	37/52/270	26/34/59
2 S	17/44/200	44/50/232	30/82/212	42/44/198	28/38/105	38/74/200	42/34/115	24/30/80
4 S	39/82/165	62/36/225	68/54/218	40/48/281	30/42/92	42/38/78	48/52/173	26/34/51
	0 E	20 E	16 E	24 E	32 E	40 E	48 E	56 E

32/30/175 SAMPLE LOCATION SHOWING Cu, Pb, Zn CONTENT IN PPM.

CYPRUS ANVIL MINING CORPORATION

EROS CLAIMS

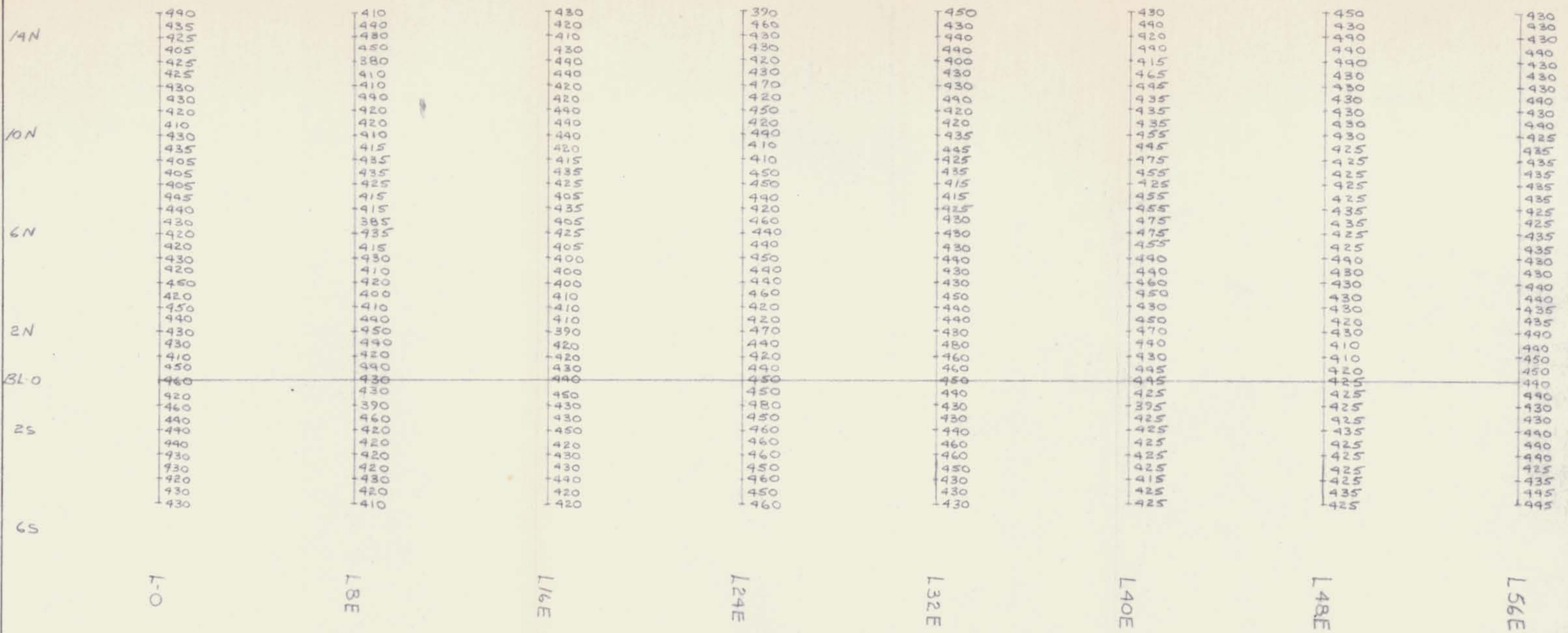
GEOCHEMICAL VALUES

N.T.S. 105 F 9

SCALE: 1" = 400'

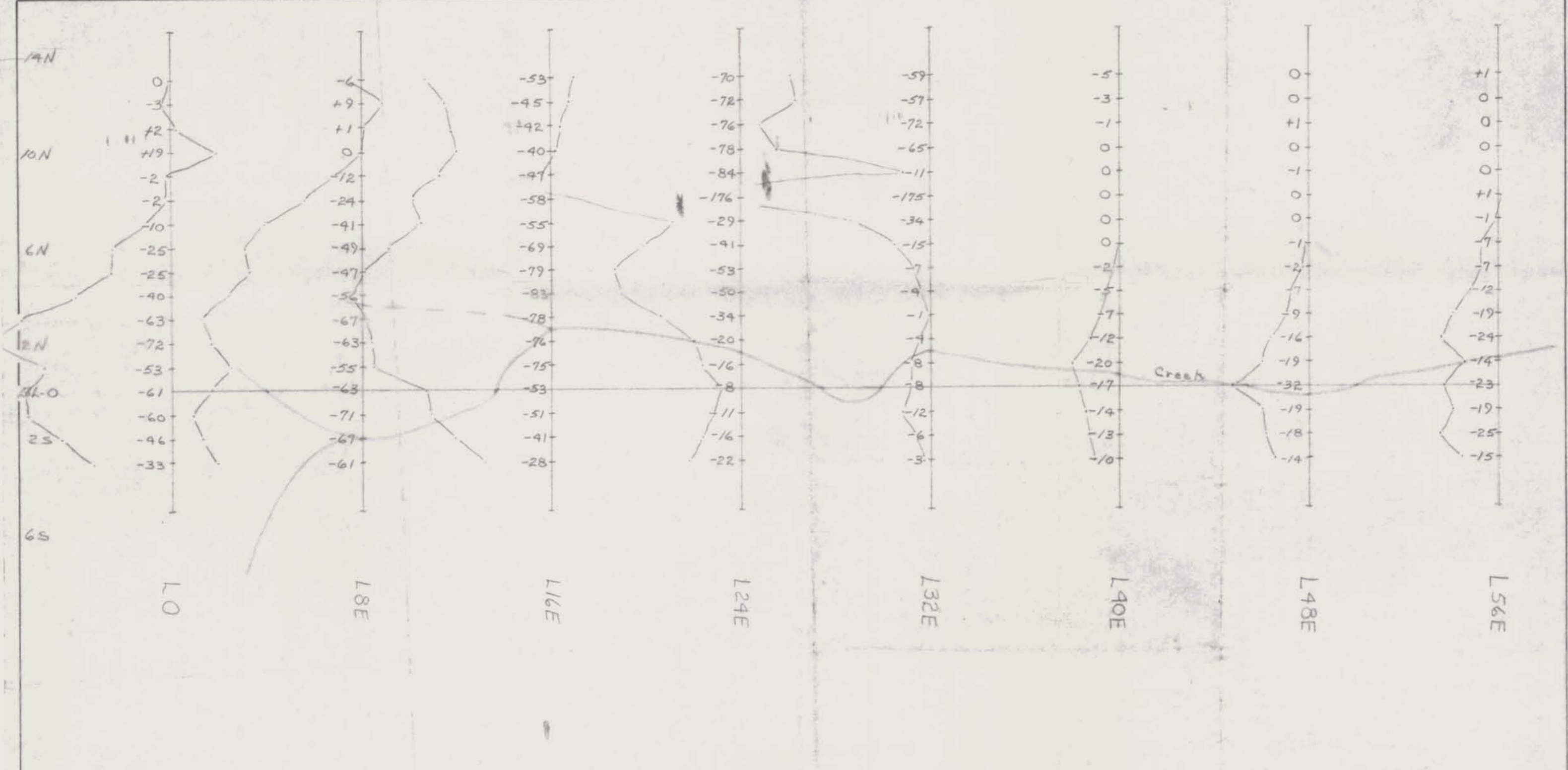
DATE: AUG. 1977

DRAWN BY: R. D. H.



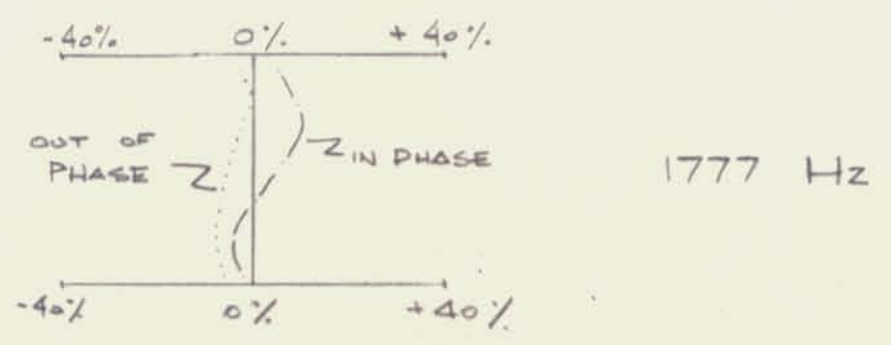
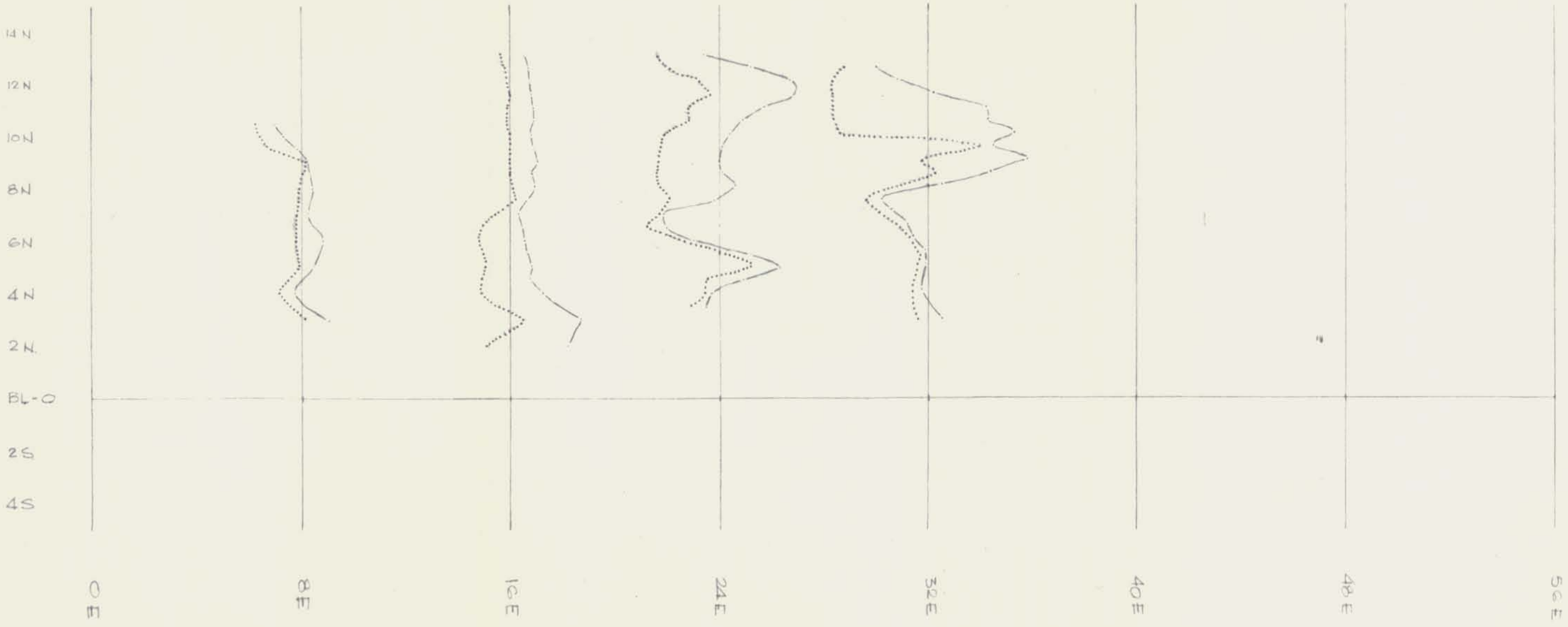
CYPRUS ANVIL MINING CORPORATION			
EROS CLAIMS			
MAGNETOMETER SURVEY			
N.T.S. 105 F 9	SCALE: 1" = 400'	DATE: AUG. 1977	DRAWN BY:

FIGURE: 4



COIL SPACING - 400 ft.
 FREQ. 1830 Hz.

CYPRUS ANVIL MINING CORPORATION			
EROS CLAIMS			
CEM HORIZONTAL SHOOTBACK SURVEY			
N.T.S. 105 F 9	SCALE: 1" = 400'	DATE: AUG. 1977	DRAWN BY



CYPRUS ANVIL MINING CORPORATION			
EROS CLAIMS			
H. E. M. HORIZONTAL LOOP SURVEY - PROFILES			
N.T.S. 105 F 9	SCALE: 1" = 400'	DATE: AUG. 1977	DRAWN BY:

FIGURE: 6B