



1976 GEOLOGICAL and GEOCHEMICAL REPORT

on the

HI 1 - 78 MINERAL CLAIMS

MINTO AREA

WHITEHORSE MINING DISTRICT

by

R. J. Joy,

and

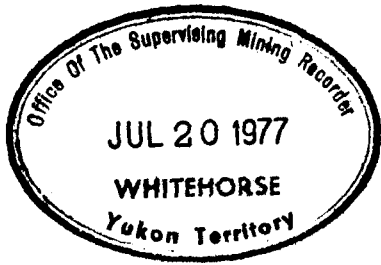
R. E. VanTassell,
United Keno Hill Mines Ltd.,
Exploration Department,
405 Main Street,
Whitehorse, Y.T.



N.T.S. Sheet 115I-6,
Latitude 62° 29'N
Longitude 137° 03'W
Dates: Aug. 9 to Sept. 30/76

Dated: February 3, 1977

070192



This report has been examined by the Geological Evaluation Unit and is recommended to the Commissioner to be considered as representation work in the amount of \$ 32,950.

Michael Marchant

A/ Resident Geologist or
Resident Mining Engineer

Considered as representation work under
Section 53 (4) Yukon Quartz Mining Act.

[Signature]
B. R. BAXTER
Supervising Mining Recorder

[Signature]
Commissioner of Yukon Territory

TABLE OF CONTENTS

	<u>Page Number</u>
INTRODUCTION	1
LOCATION and ACCESS	1
PROPERTY	1
HISTORY	1
PHYSIOGRAPHY	2
REGIONAL GEOLOGY	3
<u>GEOLOGICAL SURVEY:</u>	
General	3
Detailed -	
Granodiorite - Unit gdm	3
Foliated Granodiorite - Unit fgdm	4
Gneiss - Unit gn	4
Diorite - Unit di	5
Carmacks Group - Units eTcv & eTccg	5
Aplite & Pegmatite dikes - Units ap and peg	5
Structure	6
Alteration	6
Mineralization	6
<u>GEOCHEMISTRY:</u>	
General	7
Pedology	7
Interpretation of Results -	
Copper	8
Silver, lead, zinc & molybdenum	8
SUMMARY and CONCLUSIONS	9
RECOMMENDATIONS	10
REFERENCES	10

APPENDIX A: Attitudes of Joints, Foliations and Gneissosity

~~APPENDIX B: Logistics~~

~~APPENDIX C: Personnel Employed~~

APPENDIX D: Soil Sample Statistics

Figure 1:	Location Map	1" = 40 miles
Figure 2:	Property Map	1" = $\frac{1}{2}$ mile
Figure 3:	Poles to Joints, etc.	
Figure 4:	Histogram of copper results	

MAPS IN POCKETS:

Surface Plan	1 inch = 400 feet
Geology	1 inch = 400 feet
Geochem Plots for Cu, Mo, Ag, Pb, Zn	1 inch = 400 feet

INTRODUCTION:-

The HI Claim Group was staked in August 1976 to cover an area from which several anomalous reconnaissance soil samples were collected. These samples contained up to 189 ppm copper.

A crew of six men conducted geological and geochemical surveys between August 9 and September 30th to further investigate this area.

LOCATION and ACCESS:-

The HI Claim Group lies approximately 139 miles west - northwest of Whitehorse (Fig. 1) and about 11 miles south - southeast of United Keno's DEF property. Approximate location is latitude 62° 29'N, longitude 137° 03'W on N.T.S. Sheet 115I-6. The property extends westward from the north-flowing Big Creek.

Access to the property was by a Hiller 12E helicopter based at Stewart Crossing. Crews and supplies were flown to the property from Minto, 11 miles to the northeast.

PROPERTY:-

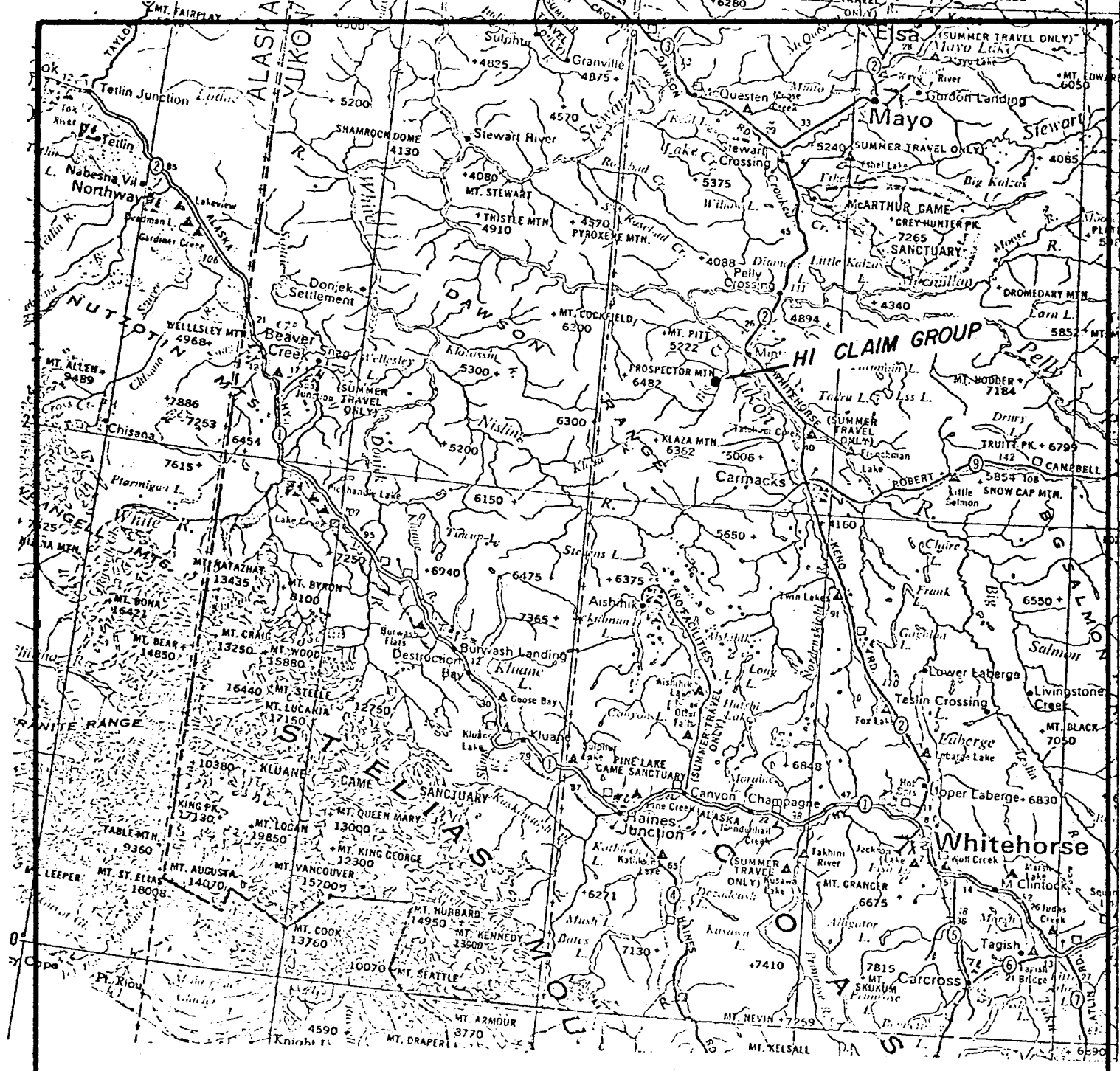
The HI Claim Group (Fig. 2) consists of 78 contiguous full and fractional claims as follows:

<u>CLAIM NAME</u>	<u>GRANT NOS.</u>	<u>LOCATION</u>	<u>RECORD DATE</u>	<u>EXPIRY DATE</u>
HI 1 - 24	YA7646-7669	5/8/76	17/8/76	17/8/77
HI 25 - 48	YA7670-7693	6/8/76	17/8/76	17/8/77
HI 49 - 70	YA7694-7715	7/8/76	17/8/76	17/8/77
HI 71Fr-73Fr	YA8197-8199	26/8/76	22/9/76	22/9/77
HI 74Fr-78Fr	YA8200-8204	27/8/76	22/9/76	22/9/77

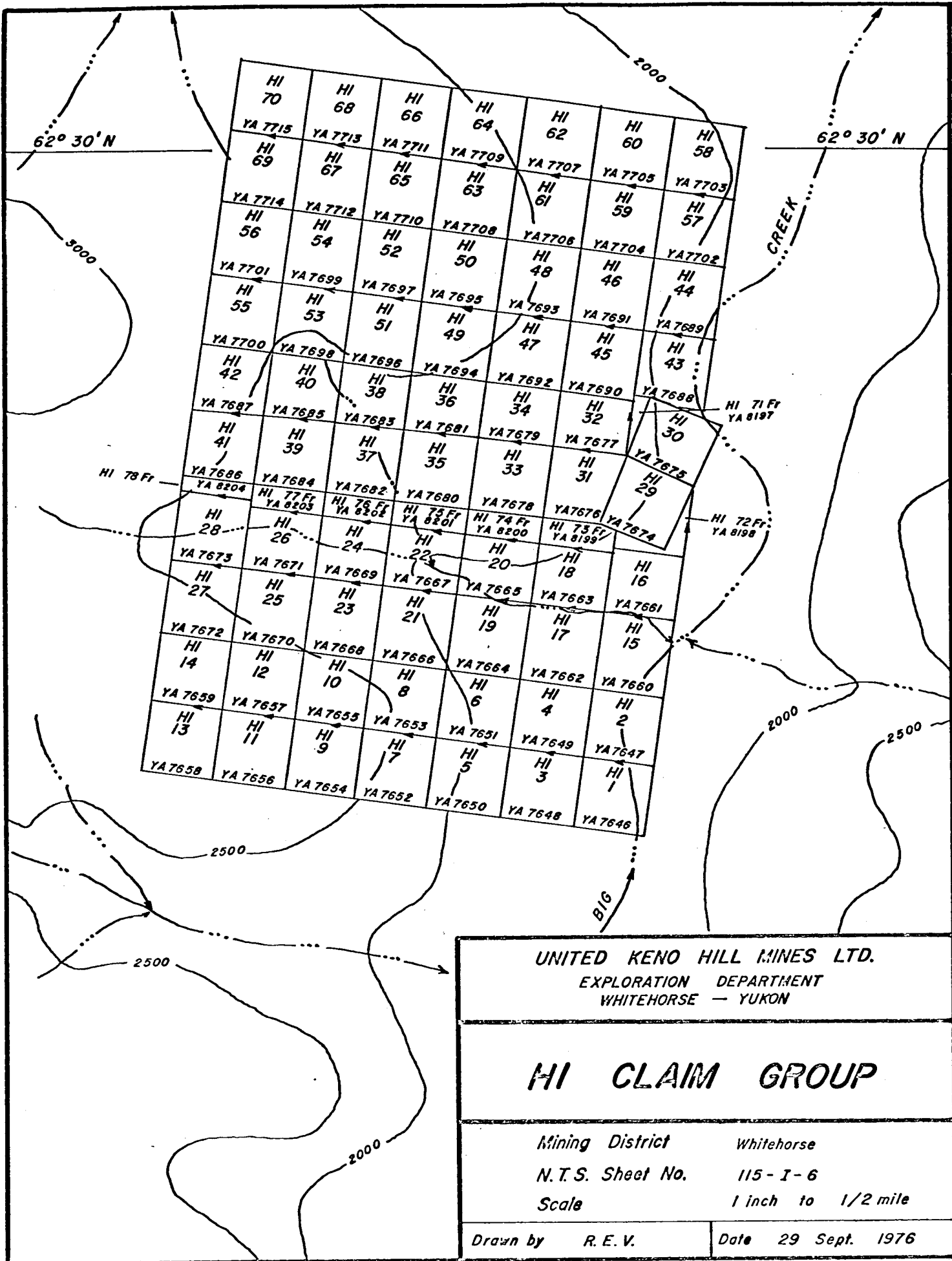
HISTORY:-

Parts of this area were staked as the Car and Ozark Claim Groups in 1971 and 1973, respectively. The Car Claims were staked shortly after the DEF/MINTO discovery. The Ozark Claims were staked during the small staking rush prompted by the release of drill hole assay data for the DEF and MINTO properties.

These companies appear to have conducted widespaced soil sample and possibly prospecting surveys. No assessment work was recorded and the groups were allowed to lapse.



UNITED KENO HILL MINES LTD. EXPLORATION DEPARTMENT WHITEHORSE — YUKON	
LOCATION MAP HI CLAIM GROUP	
Mining District	Whitehorse
N.T.S. Sheet No.	115 - 1 - 6
Scale	1 inch = 40 miles
Drawn by	RJ
Date	01/12/76



UNITED KENO HILL MINES LTD.
 EXPLORATION DEPARTMENT
 WHITEHORSE — YUKON

HI CLAIM GROUP

Mining District	Whitehorse
N.T.S. Sheet No.	115 - I - 6
Scale	1 inch to 1/2 mile

Drawn by	R. E. V.	Date	29 Sept. 1976
----------	----------	------	---------------

In 1971 and 1972, United Keno Exploration had crews prospect through this area. Some of this work was completed before the discovery of the DEF property.

In 1976 it was decided to field a two man crew to collect reconnaissance soil samples over areas of favourable rocks between the Williams Creek and DEF/MINTO deposits. Analyses of these samples revealed an area containing anomalous copper.

A brief geological investigation of the area from which the highest values were returned, revealed a small outcrop and minor float of malachite bearing foliated rocks similar to that present in the DEF deposit.

Thus, because of the sparse outcrop, it was decided to stake this area and conduct claim reconnaissance geological and geochemical surveys to determine whether more mineralized foliated horizons were present.

PHYSIOGRAPHY:-

Maxium relief on the property is 1,300 feet with elevations ranging from a low of 1,700 feet in the Big Creek valley to a high of about 3,000.

North facing slopes are heavily timbered with black spruce. A thick moss cover is prevalent over most of these areas. South facing slopes are grassy with sparce poplar.

Pine occurs on small knolls and ridges and often indicate the presence of outcrop or float.

A swampy area occurs as a 1,000 to 2,000 foot wide strip oriented north-south across the central portion of the property. A small slough lies in the upper reaches of this swampy area.

Outcrop exposure is about 2 percent but float rock covers about 10 percent of the property. Overburden appears to be quite shallow in the main showing area but may be 100 or 150 feet thick in other parts of the property. The overburden consists primarily of glacial or glacio-fluvial deposits with some residual soil.

REGIONAL GEOLOGY:-

The HI Claim Group lies on the northeast flank of the northwest trending Dawson Range. The basement rocks of this physiographic region are metamorphic rocks of the Yukon Group. Northwest structural trends predominate in these rocks. Yukon Group metamorphic rocks are Mississippian or earlier in age and were intruded by plutonic rocks which range from Triassic to Tertiary in age. Tertiary and younger rocks overlie parts of the complex.

The northwest trending, Teslin fault zone is coincident with the Yukon River valley about six miles east of the property.

The property covers the northernmost part of the granitic complex that contains the Williams Creek deposit. In this area, the intrusive body is overlain to the west and north by Tertiary volcanics. To the east, it is in fault(?) contact with massive green volcanics of uncertain age (possibly Upper Triassic, Templeman-Kluit, 1974).

GEOLOGICAL SURVEY:-

General -

Most of the HI Claims are underlain by silica-rich and silica-poor intrusive rocks. The silica-rich rocks predominate and are medium to coarse grained, massive to weakly porphyritic, and generally granodioritic in composition. In places, the granodiorite is weakly to strongly foliated. A few small areas of fine and coarse grained silica-poor dioritic rocks were observed.

A few narrow lenses(?) or horizons of quartz-feldspar-biotite gneiss and quartz-feldspathic gneiss similar to that contained in the DEF deposit were observed. Foliations trend northwest and are steeply dipping.

Later aplitic and pegmatitic dykes cut the intrusives.

The intrusive complex is overlain in places by conglomerate and volcanic rocks of the Carmacks Group.

Detailed -

Granodiorite - Unit qdm:

These rocks are dark grey to grey on weathered surfaces and grey to greyish white on fresh surfaces. They are medium grained and occur as massive and weakly porphyritic varieties. Compositionally, they vary from granodiorite to quartz monzonite.

Quartz generally constitutes about 15 percent of the rocks but may reach 30 percent. Mafic constituents are hornblende and biotite. They are present in near equal amounts and comprise 10 to 25 percent of the rock (average is about 15 percent). These rocks commonly contain polycrystalline aggregates of mafic minerals (mainly hornblende) with minor magnetite.

Foliated Granodiorite - Unit fqdm:

This unit is very similar in composition to unit gdm but generally contains a greater proportion of mafic minerals (about 20 percent). The ratio of hornblende to biotite is generally higher (60:40 versus 50:50 in unit gdm).

These rocks are poorly foliated. The foliation is defined by the alignment of biotite sheets and hornblende laths.

The contact between these weakly foliated rocks and the unfoliated granodiorite is gradational and the division is arbitrary.

Some strongly foliated rocks were observed. These are included with the gneisses.

Gneiss - Unit gn;

This unit comprises quartz-feldspar-biotite gneiss and quartzofeldspathic gneiss. These rocks are fine to medium grained, greyish white to pinkish white in colour, and exhibit poor to strong foliation or banding. The foliation is defined by banding of light and dark components in well developed gneisses and by strong planar alignment of biotite sheets in the strongly foliated granitic rocks.

The mafic content is generally quite low (4 to 15 percent) in these rocks. The quartzofeldspathic gneiss contains as little as 1-2 percent biotite.

In a few areas, a poor to moderately developed augen texture is apparent.

The contact with the weakly foliated granodiorite is sharp.

These gneissic rocks are very important on the HI Claims because copper (as malachite) showings occur within them. Unfortunately, they appear to be quite restricted in areal extent.

Diorite - Unit di:

This rock is dark colored with up to 70 percent mafic minerals (more biotite than hornblende). Both fine grained porphyritic and medium grained equigranular varieties were observed.

The finer grained diorite contains feldspar phenocrysts up to 4 mm across as well as biotite books 2-3 mm across in a fine grained equigranular matrix of feldspar, biotite, and hornblende.

Where observed, the contact with the granodiorite was sharp. The diorite adjacent to the contact is finer grained and more mafic rich than that away from the contact.

Carmacks Group - Units eTcv and eTccq:

A few patches of volcanic outcrop and debris were observed. These volcanics are greenish brown to brown in color, and are basic to intermediate in composition. Both porphyritic and aphanitic textures were noted. They occur as flows and tuff breccia.

In the northeast corner of the property conglomerate overlies the intrusive complex. This conglomerate contains volcanic pebbles and boulders cemented by a fine grained brown matrix material. A few boulders of granodiorite were also noted.

Aplite and Pegmatite dikes - Units ap and peg:

These dykes occur over most of the property within the foliated and non-foliated granodiorite.

The aplite dikes are white to pinkish white in color, generally have mafic content of one percent or less, and contain up to 80 percent feldspar. They are fine to medium grained and generally exhibit a sucrose texture. Biotite is the only mafic constituent and occasionally shows a preferred orientation. In a few places, the aplite approaches microgranite in composition.

The pegmatite veins are coarse grained, and are composed of feldspar, quartz and biotite. They are white to pinkish white in color. Feldspar crystals are generally larger than the quartz and biotite crystals.

STRUCTURE:

Due to poor exposure and the limited areal extent of the foliated rocks, only a few foliation attitudes could be recorded (Appendix A and figure 3). However, from these it is apparent that the foliation trends northwest to northeast and have steep dips.

Where observed, contacts between the gneiss and the granodiorite also had northwest trends. An easterly trend was noted for the diorite-granodiorite contact.

A four foot wide, north trending, vertical shear zone was observed in outcrop along Big Creek near the northeast corner of the property. This zone comprises a narrow green gouge zone and sheared and altered foliated granodiorite.

The granodiorite outcrops were moderately jointed and fractured. Figure 3 shows a scatter of joints. However, three broad orientations can be discerned; 1. northwest trending with shallow to moderate dips northeast; 2. scattered northwest trends with moderate to steep dips southwest; 3. scattered northeast trends with vertical dips. The northeast striking vertical joints appear to be primary.

A list of joint and foliation attitudes is given in Appendix A. Some of these may have to be modified to accommodate minor frost heaving of large rock slabs.

ALTERATION:-

Epidote is the most common alteration product. It occurs along narrow fractures and probably as a deuteric alteration product from hornblende.

Chlorite was observed occasionally and replaces biotite in rocks of Units gdm and Fgdm.

Limonite and minor hematite were observed in an exposure of granodiorite along Big Creek.

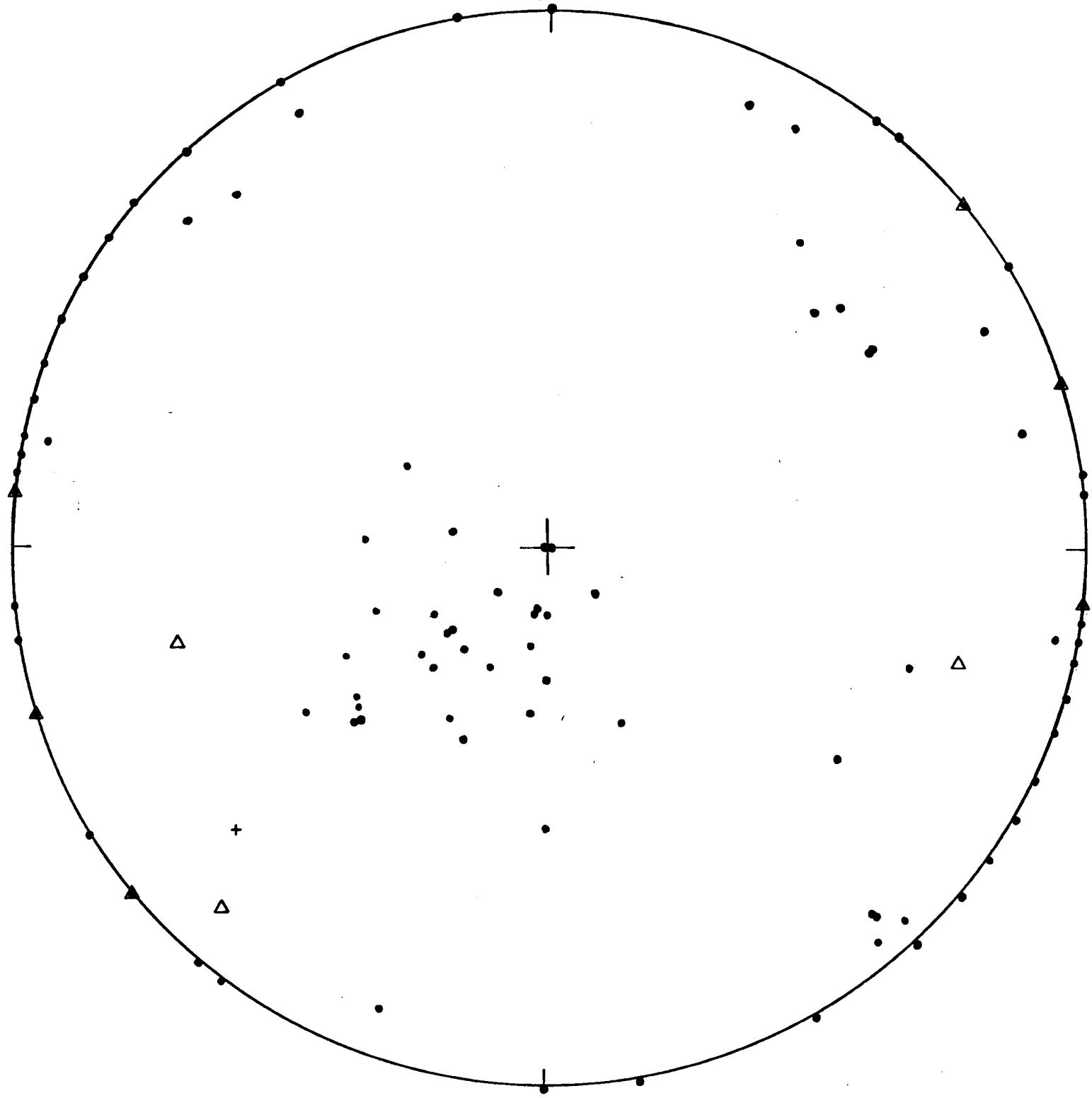
Feldspar in the shear zone exposed on Big Creek is moderately altered to kaolin or laumontite. The biotite in the altered foliated granodiorite has a reddish (hematitic) color.

MINERALIZATION:-

Weak copper mineralization occurs as malachite in gneissic and strongly foliated rocks. The malachite is generally intimately associated with biotite. Traces of malachite was also observed in a siliceous zone (quartzite selvage?) within the gneiss. This siliceous zone is very narrow (about 15 cm wide) and contains a magnetite stringer.

HI CLAIM GROUP — POLES TO JOINTS etc.

NORTH



*Lower Hemisphere
Equal Area Net Plot
93 Points*

- *Poles to Joints*
- △ *Poles to Foliations*
- + *Poles to Gneissosity*

Figure 3

Ten samples of the gneiss were collected for assay. Results are as follows:

<u>Assay No.</u>	<u>Au oz/ton</u>	<u>Ag oz/ton</u>	<u>Cu%</u>
5029	.005	.03	.13
5030	Tr	.01	.04
5031	Tr	.01	.03
5032	Tr	.02	.01
5033	Tr	.02	.11
5034	Tr	.03	.01
5035	Tr	.05	.22
5036	Tr	.02	.05
5037	Tr	.02	.04
5038	.005	.34	.18

GEOCHEMISTRY

General -

A claim reconnaissance type soil sample survey was conducted by two, two man crews. Blazed claim location lines were used as baselines. Samples were collected at 100 foot intervals along lines spaced at 300 feet. The sample lines were run using topofil chain and compass. Both augers and mattocks were used to collect samples.

All seventy-eight claims were covered by soil sampling and a total of 5147 samples were collected and analyzed for copper. Two hundred forty of these were also analysed for molybdenum, silver, lead and zinc.

The samples were analysed by Bonder-Clegg Co. Ltd. using standard analytical procedures.

Pedology -

The ubiquitous volcanic ash varies in thickness with topographic exposure. This ash layer varies in thickness from less than one (1) inch on some steep southfacing slopes to twelve (12) inches in topographic lows. A thin (1-2 inch) black humus horizon commonly underlies the ash with a sandy-clayey, red-brown B horizon below that. This humus layer is generally absent on south facing slopes.

In areas of poor drainage and some north-facing slopes, moss and other organic debris may reach twelve (12) inches in thickness and lies above the ash layer. Sometimes, permafrost conditions in these areas did not permit sampling of the B horizon. Thus an organic sample or one sample was collected. It was estimated that about 10 percent of the samples are included in this category.

Interpretation of Results -

Copper -

From the histogram of copper values (figure 4) it is apparent that 96 percent of the samples contained less than 40 ppm copper. This value was taken as the local threshold and contour intervals were determined as a geometric progression. The highest value obtained was 510 ppm.

Some of the weakly anomalous samples were collected immediately above or from the uppermost part of the permafrost layer and contained organic material. However, since no widespread concentration of copper values was observed in these areas, the anomalies probably reflect traces of copper in the underlying rocks.

Two narrow, elongate, low order anomalous areas are present in the northeast and southeast corners. The source of the copper is not known. Field work in 1977 should determine whether north east trending fractures, along which solutions may have leaked, are present. A northwest trend is also indicated in the south east corner.

The highest values (i.e. 510, 450, 382 ppm, etc.) indicate those areas where weakly mineralized gneissic rocks were observed. These rocks are overlain by a thin residual soil.

Numerous scattered small isolated anomalies with values slightly above background are indicated. Some of these are elongate and probably reflect minor restricted copper mineralization.

Topography (i.e. down-slope movement) appears to have had limited influence on the spread of values.

There are no apparent geochemical differences over the various unmineralized rock types.

The copper values do not indicate any major areas of mineralization.

Silver, Lead, Zinc and Molybdenum -

No anomalous areas were indicated for any of these metals.

However, a few weakly anomalous zinc values were returned (i.e. 100 - 128 ppm). Although the zinc values are low, their distribution (see zinc plot) does show an interesting pattern. When viewed in conjunction with the geology plan the pattern suggests possible differences in the geochemical abundance of zinc for different rock types.

HI CLAIM GROUP

Histogram of Copper results in soils

Total = 5147 Samples

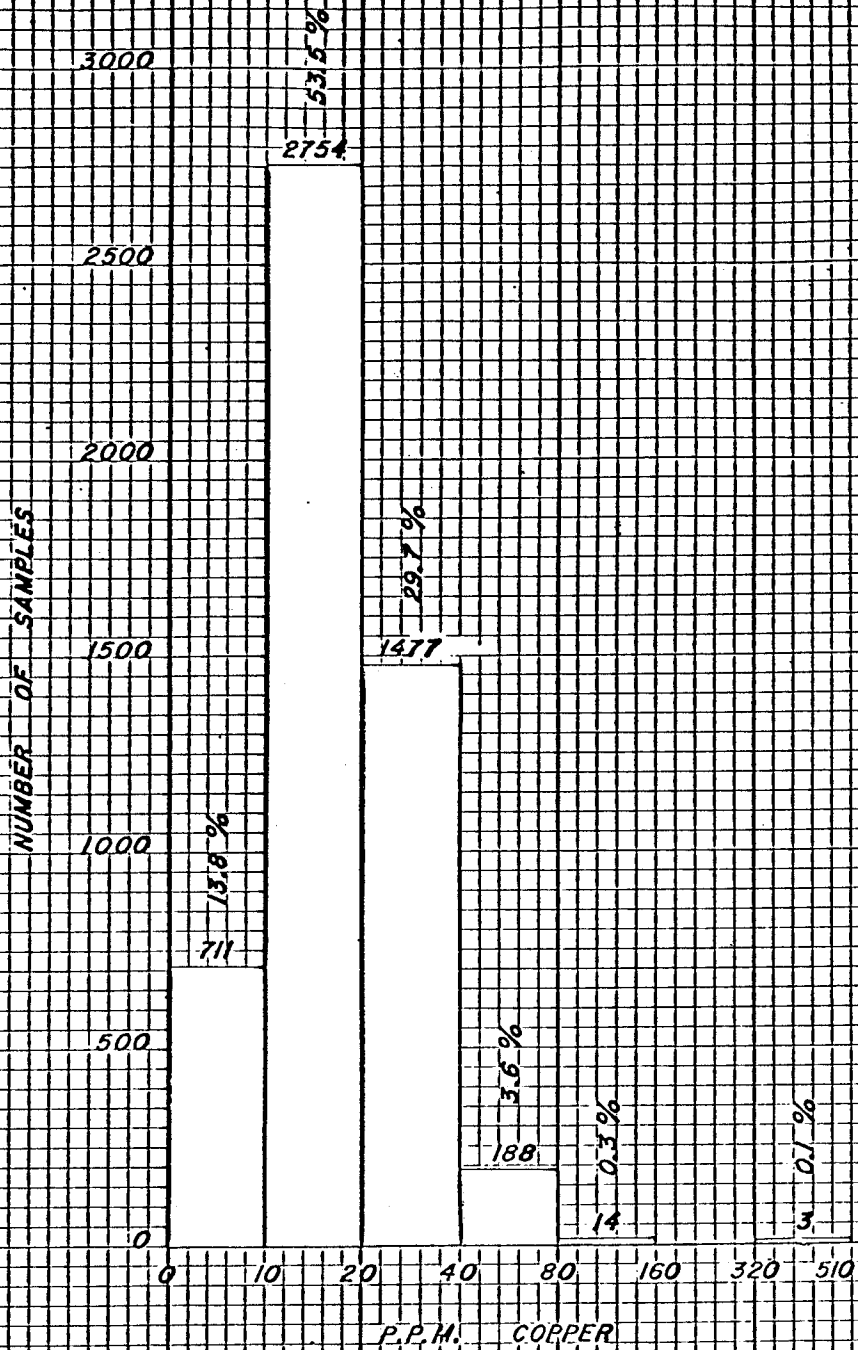


Fig. 4

SUMMARY and CONCLUSIONS:-

The HI Claim Group consists of 70 full and 8 fractional claims. These claims were staked in August, 1976 to cover an area from which anomalous reconnaissance soil samples were collected.

A six man crew conducted geological and geochemical surveys on the property during the period August 9th to September 30. This program resulted in the collection of 5147 soil samples. All samples were analysed for copper and 269 were analysed for silver, lead, zinc and molybdenum.

Although results were generally flat with scattered small isolated anomalies, several narrow elongate low order copper anomalies were found. The highest values (i.e. 510, 450 ppm, etc.) indicate gneissic rocks that contain minor copper mineralization.

The zinc plot suggests possible differences in the geochemical abundance of zinc in foliated and unfoliated rocks. Only a few of the zinc values were weakly anomalous.

Rocks observed on the property comprise granodiorite, foliated granodiorite, quartz-feldspar-biotite gneiss, quartzofeldspathic gneiss, diorite, aplite, pegmatite, volcanics, and conglomerate.

No primary copper minerals were identified. The secondary copper mineral, malachite, was observed in a number of places. The malachite was restricted to gneiss and associated quartz vein or quartzite selvage and commonly occurred with biotite. Magnetite is a common accessory in the granodiorite, and one small veinlet was observed in the siliceous gneiss.

Structural trends appear to be northwest and northeast. Foliations appear to strike northwest and have steep dips.

Secondary alteration minerals comprise epidote, chlorite, limonite, hematite, and laumontite. The chlorite, epidote and possibly limonite occur as partial deuteric alteration of mafic minerals. The laumontite, hematite and limonite occur with epidote in the fault zone which lies in and parallels the Big Creek valley.

There does not appear to be any major mineral deposit suboutcropping in this area. This does not discount the possibility of copper mineralization at depth in the gneissic rocks.

RECOMMENDATIONS:-

It is recommended that four years assessment work be filed to keep the claims in good standing.

Also, that the northeast and southeast corners be geologically investigated to determine the cause of the geochemical anomalies.

Approximately 200 soil samples should be collected outside of and south of the southeast portion of the property to determine whether any further anomalies are present.

A small IP survey should be conducted, perhaps during the 1978 field season in conjunction with follow-up work on the STU Group (about 10 miles southeast) if such is warranted.

REFERENCES:-

Archer, Cathro and Associates - Mineral Inventory
of Yukon and Northwest Territories

Templeman-Kluit, D.J.; 1973, Reconnaissance Geology of
Aishihik Lake, Snag, and part of Stewart River Map-
Areas, west Central Yukon, G.S.C. Open File 161.

- 1974, compilation map of Carmacks,
Yukon Territory, G.S.C. Open File 200.

R. B. Van Tassel

APPENDIX A

JOINTS, FOLIATIONS, and GNEISSOSITY

JOINTS
SHALLOW

280/10N
320/20NE
310/20NE
090/10N
332/35E
318/40NE
304/horizontal
296/20N
090/20N
326/45NE
090/43N
320/38NE
300/30NE
003/28E
322/37NE
280/15N
286/25N
320/25NE
320/10NE
160/28NE
030/25SE
010/15E
294/32NE
330/20NE
077/29N
134/25NE
138/40NE
124/horizontal
100/10N
040/10N
140/20N

STEEP

030/90
047/90
040/90
328/90
060/90
016/90
294-80S
020/90
080/90
328/60SW
044/85NW
090/90
042/80SE
320/60SW
048/80NW
318/56SW
356/090
050/85NW
010/85W
025/90
309/63SW
040/90
036/56NW
352/90
012/85E
342/90
020/90
012/90
140/90
018/60W
008/90
130/90
060/90
127/90
290/80N
327/80SW
040/90
120/80SW
140/60W
048/80NW
048/77SE
006/90
010/90
016/90
294/80S
020/90

STEEP(Cont'd)

080/90
030/90
148/90
047/90
030/90
070/83SE
320/90
346/80W
035/90

FOLIATION

312/79NE
342/90
016/68W
320/90
346/60E
006/90

GNEISSOSITY

138/67NE

/ SOIL SAMPLE STATISTICS

Project: HI CLAIM GROUP (30-304) Dates of Program: August 9, 1976
to September 30, 1976

Number of Samples Collected: 5147

Metals Analyzed: Cu Mo Ag Pb Zn

Samplers: Drew MacDonald, Ken Mardus

Mike Ribbi, Glen Gilbert

Dennis Johnson, Rodney Roland

Man days: 212

Samples collected / man - day: 24.3

Pb

Cu

Values in ppm	No. in Range	% of Total	Values in ppm	No. in Range	% of Total
0 - 19	267	99.3	0 - 9	711	13.8
20 - 25	2	0.7	10 - 19	2754	53.5
			20 - 29	1160	22.5
			30 - 39	317	6.2
			40 - 79	188	3.6
			80 - 159	14	0.3
			160 - 319	-	-
			320 - 510	3	0.1

Zn

Mo

Values in ppm	No. in Range	% of Total	Values in ppm	No. in Range	% of Total
0 - 49	180	66.9	0 - 3	269	100.0
50 - 99	83	30.9			
100 - 128	6	2.2			

Ag

Values in ppm	No. in Range	% of Total	Values in ppm	No. in Range	% of Total
0 - 1.1	269	100.0			

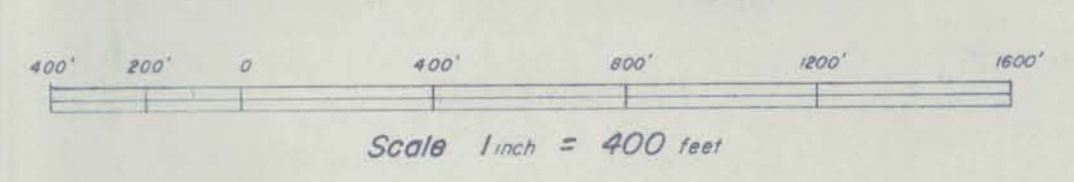


UNITED KENO HILL MINES LTD.
EXPLORATION DEPARTMENT WHITEHORSE, Y.T.

HI CLAIM GROUP
N.T.S. SHEET 115-1-6

SURFACE PLAN

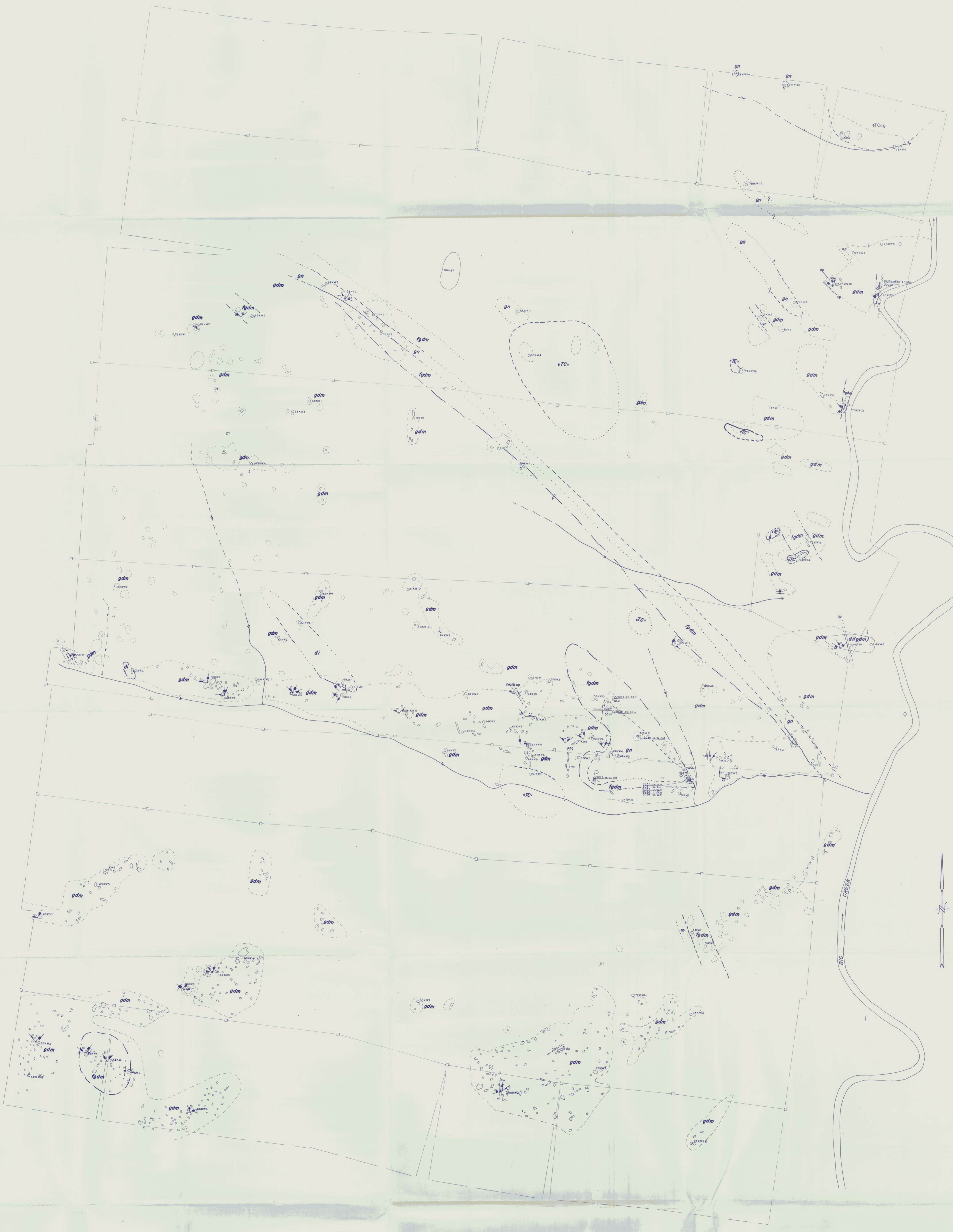
- Creek with flow direction indicated
- - - Claim location line
- Claim boundary
- Claim posts



No.	Revision	Date	By	No.	Revision	Date	By
1	2005-10-19						

Drawn by: RJ DWG. NO.

Date: 19/10/76



LEGEND

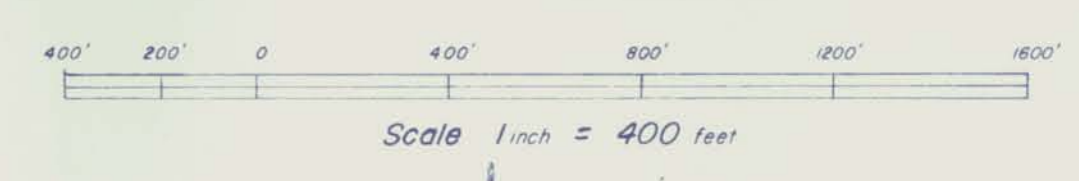
- gdm biotite, hornblende, granodiorite
- fgdm weakly foliated biotite hornblende granodiorite
- gn biotite-quartz feldspar gneiss to quartzofeldspathic gneiss
- di diorite
- eTCv Carmacks Group volcanics
- eTCg Carmacks Group conglomerate
- ap aplite dike
- peg pegmatite dike

- Areas of outcrop
- Outline of area containing float rock
- Geological Contact (defined, approximate, assumed)
- Gradational Contact (defined, approximate)
- Fault (observed, assumed)
- Joints (vertical, inclined)
- Foliation (vertical, inclined)
- Copper Occurrence
- Assay Sample Location with numbers
- Comp site
- Rocksample Location

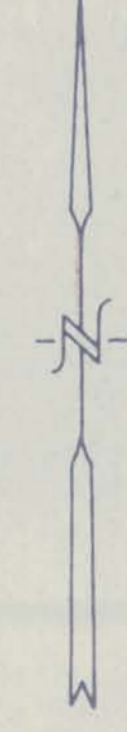
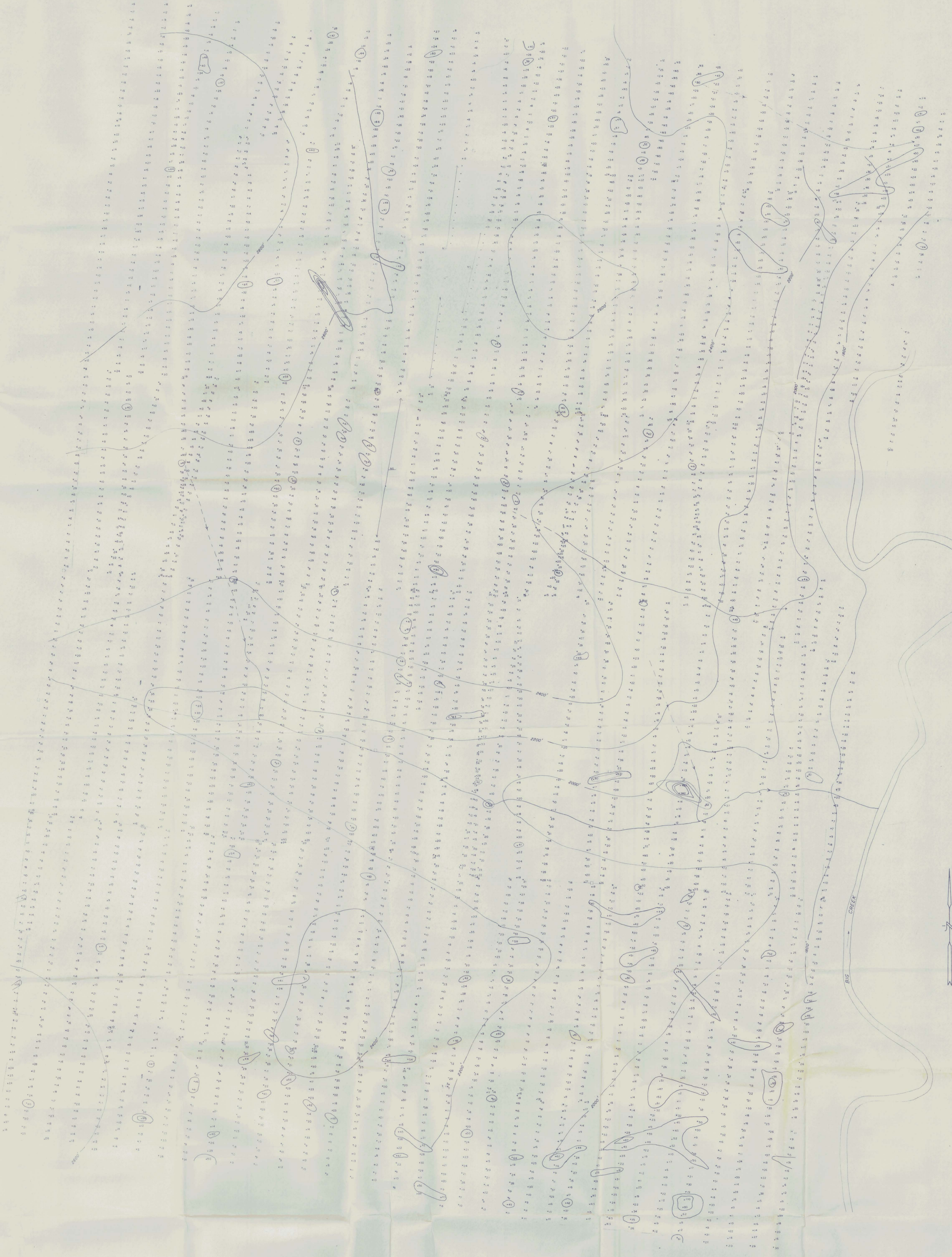
- Creek with flow direction indicated
- Claim location line
- Claim boundary
- Claim posts

UNITED KENO HILL MINES LTD.
EXPLORATION DEPARTMENT WHITEHORSE, Y.T.
HI CLAIM GROUP
N.T.S. SHEET 115-1-6

GENERAL GEOLOGY



No.	Revision	Date	By	No.	Revision	Date	By	Drawn by	DWG.
1	JAN. 20th 1977	JF						RJ	NO.
								Date	18/10/76



Contour intervals in ppm

- 0-39
- 40-79
- 80-159
- 160-319
- >319

● Soil Sample location
with Cu in ppm

- Creek with flow direction indicated
- Claim location line
- Claim boundary
- Claim posts

UNITED KENO HILL MINES LTD.
EXPLORATION DEPARTMENT WHITEHORSE, Y.T.

HI CLAIM GROUP
N.T.S. SHEET 115-1-6

COPPER PLOT

Scale 1" = 400'

No.	Rev.	Date	By	Rev.	Date	By	Drawn By	DWG NO.
1		10/10/75	AR				RJ	NO



CREEK



UNITED KENO HILL MINES LTD
EXPLORATION DEPARTMENT
WHITEHORSE - YUKON

HI-CLAIM-GROUP
No Geochem analysis in ppm
Claim No's: 16,18,20,29,31,33

Mining District Whitehorse
N.T.S. Sheet No. 115-1-6
Scale: 1" = 400 feet

Drawn by

Date: Sept. 1976



UNITED KENO HILL MINES LTD
 EXPLORATION DEPARTMENT
 WHITEHORSE YUKON

HI-CLAIM-GROUP
 Ag Geochem analysis in 10th ppm
 Claim No's 16,18,20,29,31,33

Mining District Whitehorse
 N.T.S. Sheets No. 115-1-6
 Scale 1" = 400 feet

Drawn by

Date: Sept. 1976

CREEK



CREEK

UNITED KENO HILL MINES LTD EXPLORATION DEPARTMENT WHITEHORSE YUKON	
HI-CLAIM-GROUP Pb Geochem analysis in ppm Claim No's. 16,18,20,29,31,33	
Mining District Whitehorse N.T.S. Sheets No. 115-1-6 Scale 1" = 400 feet	
Drawn by:	Date Sept. 1976

