

GEOCHEMICAL REPORT

CHZERPNOUGH CLAIM GROUP

Whitehorse Mining District

Yukon Territory

N.T.S. 105 F - 9



Latitude: 61⁰ 36' N

Longitude: 132⁰ 26' W

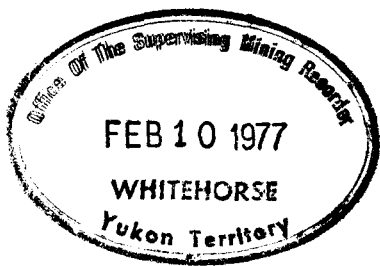
By:

P. Dean

CYPRUS ANVIL MINING CORPORATION

January 10, 1977.

[Handwritten signature]



This report has been examined by the Geological Evaluation Unit and is recommended to the Commissioner to be considered as representation work in the amount of \$ 3100.00

[Handwritten signature]

~~Resident Geologist or
Resident Mining Engineer~~

Considered as representation work under Section 53 (4) Yukon Quartz Mining Act.

[Handwritten signature]

B.R. BAXTER
Supervising Mining Recorder

102/ Commissioner of Yukon Territory

GEOCHEMICAL REPORT

CHZERPNOUGH CLAIM GROUP

Whitehorse Mining District

Yukon Territory

N.T.S. 105 F - 9

Latitude: 61⁰ 36' N

Longitude: 132⁰ 26' W

By:

P. Dean

CYPRUS ANVIL MINING CORPORATION

January 10, 1977.

Field Work Done from Aug 9/76 - Aug 18/76.

TABLE OF CONTENTS

	<u>Page</u>
LIST OF CLAIMS	
INTRODUCTION	1
SUMMARY AND CONCLUSIONS	1
GEOLOGIC SETTING	1
GEOCHEMISTRY	2
PROPOSED EXPLORATION	3
PROPOSED 1977 BUDGET	3

FIGURES

Figure 1 - in pocket	- Location Map	- 1" : 4 miles
Figure 2 - bound in report	- Claim Map	- 1" : ½ mile
Figure 3 - in pocket	- Geochem Values Map	- 1" : 400 feet

APPENDICES

Appendix I	List of Personnel
Appendix II	Summary of Costs
Appendix III	Affidavit Supporting Summary of Costs
Appendix IV	Vouchers Supporting Summary of Costs

Cyprus Anvil Mining Corporation

330, 355 Burrard Street Telex 04508594
Vancouver, British Columbia
V6C 2G8
Telephone (604) 687-2586

GEOCHEMICAL REPORT

CHZERPNOUGH CLAIM GROUP

INTRODUCTION

The CHZERPNOUGH Claim Group lies in the headwaters of Cloutier Creek, immediately south of Peak 7001, at approximately $132^{\circ} 26' W \times 61^{\circ} 36' N$. Access is by helicopter from Ross River, about 30 miles to the north. Topography on the claim group is rugged, and elevations vary from 7,000 feet on the highest peak to about 5,000 feet in the adjacent valley bottom at the top of Cloutier Creek.

The claim group covers showings of galena and sphalerite mineralization which were discovered during regional prospecting carried out by the Pelly Project, a joint venture exploration program undertaken during 1976 by Cyprus Anvil Mining Corporation and Hudson Bay Oil and Gas. The mineral showings, along with sedimentary barite float and extensive geochemical anomalies, occur within a sequence of very pyritic acid volcanic breccias of Mississippian age.

SUMMARY AND CONCLUSIONS

A geochemical survey was completed on the claim group during August, 1976, using a flagged in grid to establish sampling sites. Line cutting, geologic mapping, hand trenching, and geophysical surveys are proposed to be carried out on the claim group during 1977. Drill testing of any significant targets outlined by this work can be carried out during 1978.

GEOLOGIC SETTING

The CHZERPNOUGH Claim Group is underlain by a variety of acid volcanic breccias

CYPRUS ANVIL²

PELLY PROJECT

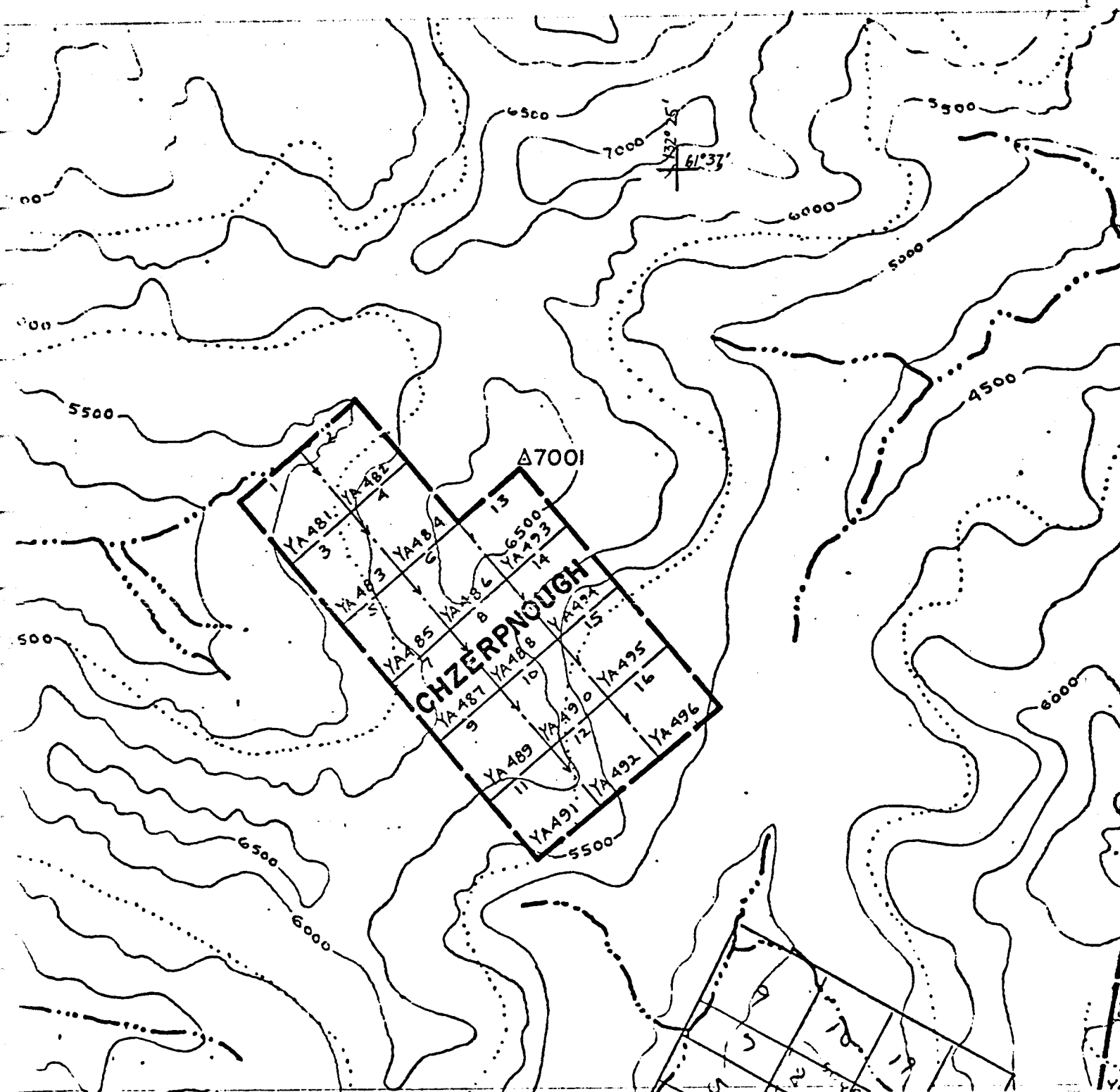
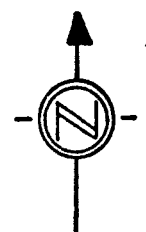


Figure 2
CHZERPNOUGH CLAIM GROUP

n.t.s. : 105-F-9

scale : 1" = 1/2 mi.



LIST OF CLAIMS

<u>Claims</u>	<u>Grants Nos.</u>	<u>Recording Dates</u>
Chzerpnough 1 - 16	YA 481 - YA 496	August 10, 1976

of Mississippian age. The breccias vary in clast size from tuffs to coarse agglomerates with foreign rounded clasts up to 2 feet in diameter. The most common rock unit, and the one hosting the known showings, is a lapilli tuff with abundant carbonate in the matrix. Talus occurrences of disseminated sphalerite, galena, and fluorite, and of sugary sedimentary barite have been discovered on the claims. The barite is similar in appearance to that which occurs on the MM massive sulfide prospect a few miles to the southwest. In spite of the strong topographic relief in the claim group, good outcrops are rare, and in general the volcanics weather into piles of blocky felsenmeer. Strong shearing is evident in hand specimens, and the structural geology on the claims is undoubtedly complex. It may not be possible to resolve the geometry of the important rock units on the property without diamond drill or other underground information.

GEOCHEMISTRY

A total of 318 soil samples were taken on the CHZERPNOUGH Claim Group. Samples were taken at 200 foot intervals on flagged lines 400 feet apart. The material sampled in general was soil from scree slopes. Good soil profiles are not developed in the alpine terrain underlying the claim group so the samples are basically finely comminuted rock material roughly equivalent to "C" horizon soil.

The analytical procedure used on the samples began with air drying in Kraft paper bags, followed by sieving to yield a -80 mesh fraction. The oversize material was discarded. The -80 mesh material was digested in a nitric-perchloric acid reagent, which results in the total extraction of copper, lead, and zinc from the sample, including that portion bound up in silicate minerals. The quantities of copper, lead, and zinc are then determined using an atomic absorption instrument.

Large and complex lead-zinc geochemical anomalies occur on the south half of the gridded area (Figure 3). These anomalies are partly related to the known showings, but are much more extensive than would be expected on the basis of those showings only. There is a good likelihood, therefore, that new

and possibly more significant lead-zinc occurrences suboutcrop under talus on the property.

PROPOSED EXPLORATION

Magnetic and electromagnetic surveys are recommended as the next step in the search for massive sulfide mineralization on the CHZERPNOUGH Claims. An accurate picket line grid should be established in order to provide control for these geophysical surveys, since the flagged grid completed in 1976 is neither accurate nor permanent. Geology can be mapped and tied into the new grid to aid in interpreting the geophysics and the geochemical results. Hand trenching may be useful to expose the sedimentary barite horizon since it nearly outcrops at the top of the scree slope.

PROPOSED 1977 BUDGET

	<u>Geophysics</u>	<u>Mapping & Other Work</u>	<u>Total</u>
01 Salaries and Wages	\$ 1,200	\$ 2,500	\$ 3,700
03 Consulting Fee	500		500
04 Line Cutting	3,000		3,000
11 Geochem Analysis		100	100
12 Equipment and Supplies	220	200	420
13 Camp Maintenance	530	700	1,230
15 Rotary Wing	3,200	2,000	5,200
17 Miscellaneous Transportation Expediting		300 200	300 200
	<hr/>	<hr/>	<hr/>
TOTALS	\$ 8,650	\$ 6,000	\$ 14,650

Respectfully submitted,



PETER DEAN.





January 10, 1977.

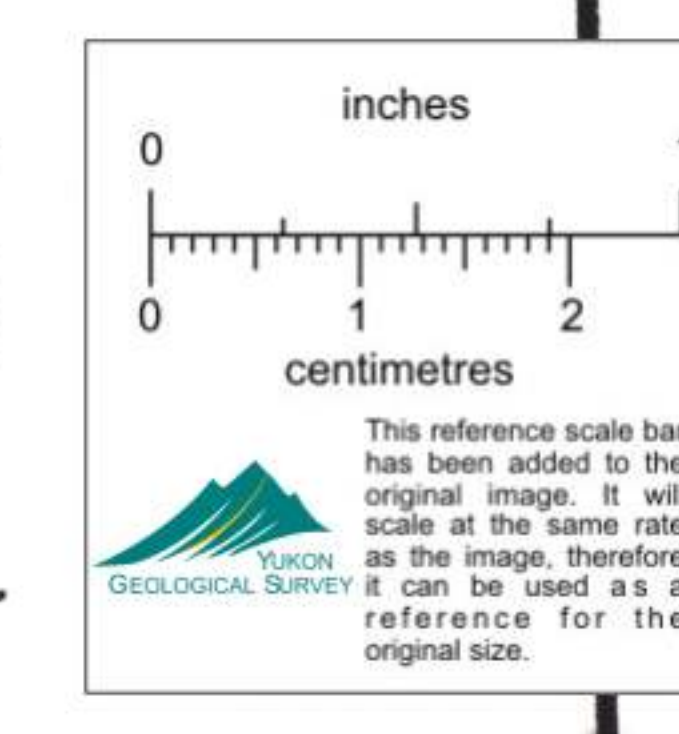


CYPRUS ANVIL MINING CORPORATION

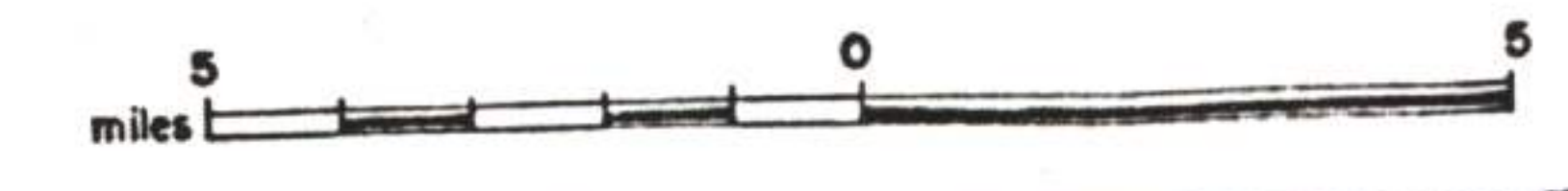
PELLY PROJECT

Figure 1

- PROJECT AREA OUTLINE: 
- CLAIM GROUPS: 
- SHOWING LOCATIONS: 
- ROADS: 



Scale: 1:250,000



D90173

