

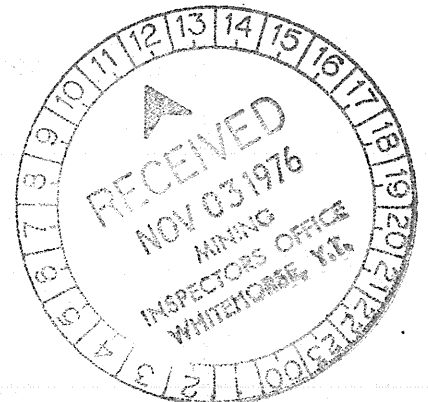
GEOLOGICAL REPORT  
on the JASON claims,  
located about 10 miles SW of Macmillan Pass  
Claim Sheet 105-0-1, 63°09'N, 130°15'W  
by  
Clyde L. Smith, Ph.D. P.Eng.  
August 5-20, 1976

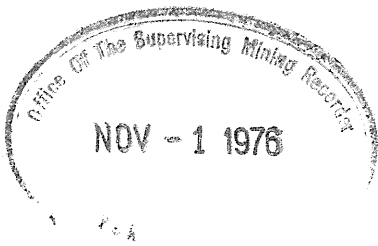
TABLE OF CONTENTS

I.	Introduction	1
II.	List of Claims	2
III.	General Geology	3
IV.	Conclusions and Recommendations	4
V.	Personnel Employed	4
VI.	Qualifications of C. L. Smith, Author	5
VII.	Expenditures	6

LIST OF ILLUSTRATIONS

- Fig 1. Key Sketch, Location  
Fig 2. Geologic Map





This report has been examined by the Geological Evaluation Unit and is recommended to the Commissioner to be considered as representation work in the amount of \$ \_\_\_\_\_

\_\_\_\_\_  
Resident Geologist or  
Resident Mining Engineer

Considered as representation work under  
Section 53 (4) Yukon Quartz Mining Act.

\_\_\_\_\_  
Commissioner of Yukon Territory

I. INTRODUCTION

During the period August 5-20, 1976, the area of Figure 2 was geologically mapped on a scale of 1" =  $\frac{1}{2}$  mile. The area includes part of the southern Jason property and an area to the south. The Jason claims were staked in 1974 and 1975 to cover areas of geological potential lying west of the nearby Tom lead-zinc-silver deposit.

II. LIST OF CLAIMS

<u>Claim Name</u>	<u>Holder</u>	<u>Recording Date</u>
Jason 1-6	British Newfoundland Exploration Limited - In Trust	August 21-23, 1974
Jason 7-32	British Newfoundland Exploration Limited - In Trust	August 21-23, 1974
Jason 33-34	British Newfoundland Exploration Limited - In Trust	August 21-23, 1974
Jason 35-40	British Newfoundland Exploration Limited - In Trust	August 21-23, 1974
Jason 41-44	British Newfoundland Exploration Limited - In Trust	August 21-23, 1974
Jason 45-48	British Newfoundland Exploration Limited - In Trust	July 23, 1975
Jason 49-82	British Newfoundland Exploration Limited - In Trust	August 8, 1975
Jason 84	British Newfoundland Exploration Limited - In Trust	August 7, 1975
Jason 85-92	British Newfoundland Exploration Limited - In Trust	August 7, 1975
Jason 93-114	British Newfoundland Exploration Limited - In Trust	August 8, 1975
Jason 115-116	British Newfoundland Exploration Limited - In Trust	August 7, 1975
Jason 117-122	British Newfoundland Exploration Limited - In Trust	August 8, 1975
Jason 123-124	British Newfoundland Exploration Limited - In Trust	August 7, 1975
Jason 125-130	British Newfoundland Exploration Limited - In Trust	August 8, 1975
Jason 131-134	British Newfoundland Exploration Limited - In Trust	August 7, 1975
Jason 135-136	British Newfoundland Exploration Limited - In Trust	March 15, 1976 ?
Jason 138-140	British Newfoundland Exploration Limited - In Trust	March 15, 1976 ?
Jason 141-160	British Newfoundland Exploration Limited - In Trust	August 8, 1975
Jason 161-176	British Newfoundland Exploration Limited - In Trust	November 12, 1975
Mike 1-2	British Newfoundland Exploration Limited - In Trust	June 7, 1976 ?

### III. GENERAL GEOLOGY

Regional geology of the Macmillan Pass area is shown on the Nidderly Lake sheet of the Geological Survey of Canada. The stratigraphic sequence in the general vicinity of the JASON claims is as listed below:

#### Devonian and Mississippian (?)

- Unit 4: Brown-weathering siltstone, often cross-bedded.
- Unit 3: Black carbonaceous shale, laminated, massive, siliceous, or argillaceous in places. Barite in lower both bedded and as spots. Host to mineralisation at TOM deposit.
- Unit 2: Resistant, craggy-outcropping conglomerate, Cherty, quartzitic and argillaceous clasts to 6" in diameter. Some interbedded sandstone.
- Unit 1: Rusty brown-weathering argillite characteristically with  $\frac{1}{4}$  to 1 inch alternating light and dark grey bands.

#### Ordovician-Silurian

Road River Formation: Silver-weathering black graptolitic shales. Grey limestone, tan siliceous dolomite.

Stocks of Cretaceous granitic rock intrude and hornfels these sediments and modify structures.

Figure 2 shows two blocks of geology separated by a north-south trending fault. West of the fault, above the valley of the South Macmillan River, Road River carbonaceous argillites are broadly folded around northwest trending axis and overlain by Unit 1. To the east, the stratigraphic succession includes units 1-4 which are folded into an open syncline. The synclinal axis trends north-westerly in the south and bends to the east before leaving the map in the northeast corner. The eastern side of the area is occupied by a granite body (unit 7) which has intruded and arched the sediments.

#### IV. CONCLUSIONS AND RECOMMENDATIONS

The significant geological fact of the map area is that unit 3CS, which is host to the Tom deposit to the east, may be seen as decreasing in thickness to the south and thus indicating the southern margin of the basin which confined the deposition of unit 3CS. No mineralisation was found in outcropping 3CS in this area.

#### V. PERSONNEL EMPLOYED

C. L. Smith, Geologist,  
5364 - 6th Avenue,  
Delta, B.C.

P. C. LeCouter, Geologist,  
6960 Canyon Blvd.,  
North Vancouver, B.C.

VI. QUALIFICATIONS OF C. L. SMITH, AUTHOR

Education

Carleton College, Northfield, Minn., U.S. - B.A. received 1959  
University of B.C., Vancouver, B.C. - M.Sc. received 1962  
University of Idaho, Moscow, Idaho, U.S. - Ph.D. received 1966

Employment

1970 - present: Consulting Geologist, Vancouver, B.C.  
1968 - 1970: Director and Exploration Manager,  
Spartan Explorations Limited  
1966 - 1968: Chief Geologist, Atlas Explorations Limited  
1965 - 1966: Senior Geologist, Kerr-Addison Mines Ltd.

Professionals

Registered Professional Engineer, Association of  
Professional Engineers, Province of British Columbia.

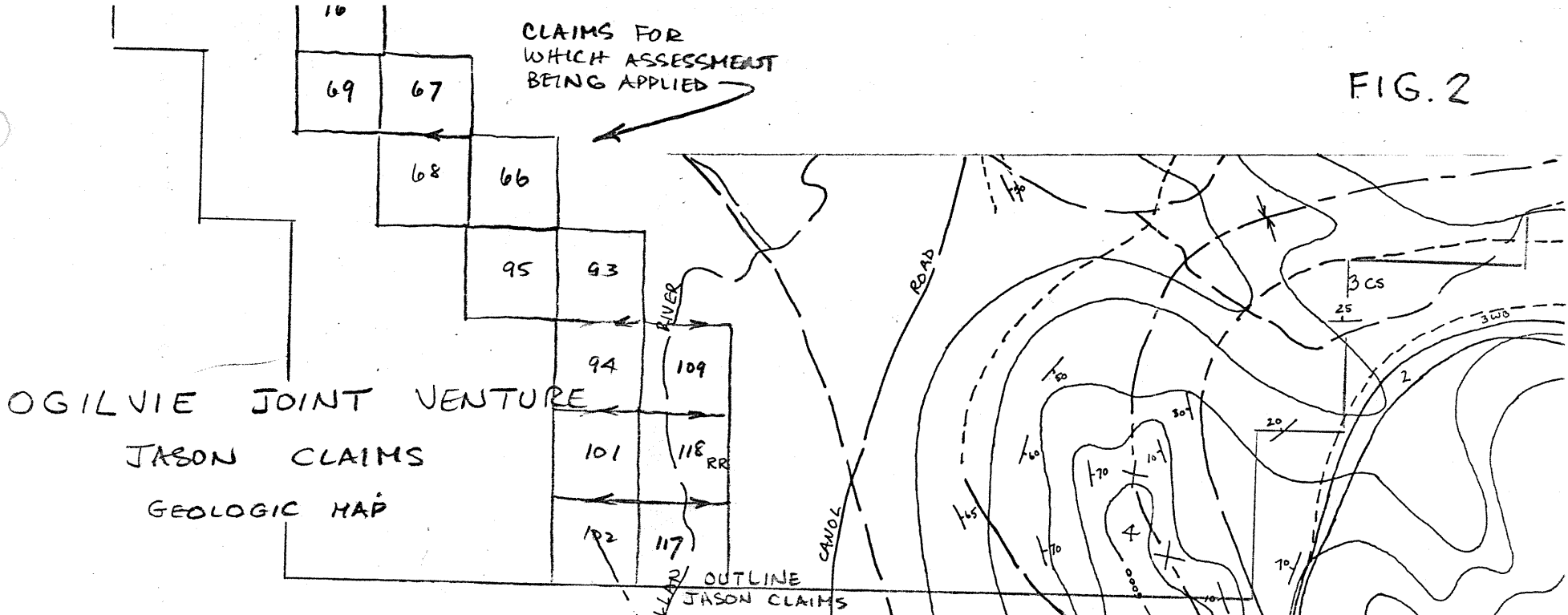
VII. EXPENDITURES

Helicopter - 3 hours @ \$160.00/hour	\$ 480.00
Salaires: C. L. Smith	600.00
P. LeCouter	400.00
Subsistence	<u>140.00</u>
TOTAL	<u>\$1,620.00</u>



FIG. 2

CLAIMS FOR WHICH ASSESSMENT BEING APPLIED



OGILVIE JOINT VENTURE  
JASON CLAIMS  
GEOLOGIC MAP

LEGEND

CRETACEOUS

[7] GRANITE

DEVONIAN-MISSISSIPPIAN

[4] SILTSTONE, SANDSTONE

[3cs] CARBONACEOUS-SILICEOUS ARGILLITE

[3wb] TUFFACEOUS ARGILLITE

[2] VOLCANIC BRECCIA

[1] TUFFACEOUS ARGILLITE

ORDOVICIAN

[RR] CARBONACEOUS ARGILLITE

TO ACCOMPANY GEOLOGICAL REPORT ON  
JASON CLAIMS BY C.L. SMITH,