

REPORT

on

ROSS MINERAL CLAIM

KENO HILL AREA

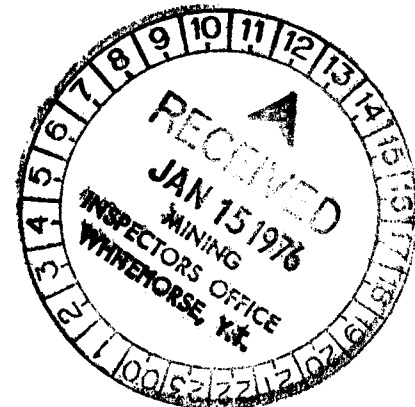
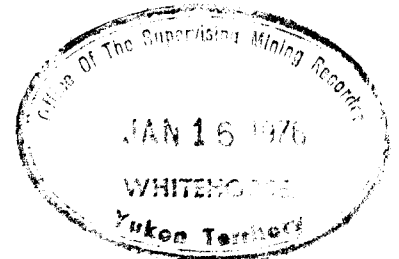
YUKON TERRITORY

for

RJO PLATA SILVER MINES LTD.

420, 475 Howe St.

Vancouver, B.C.



This report has been examined by the Geological Evaluation Unit and is recommended to the Commissioner to be considered as representation work in the amount of

\$7,06.00

[Signature]
Resident Geologist or
Resident Mining Engineer

Considered as representation work under Section 53 (4) Yukon Quartz Mining Act.

[Signature]
S.R. DAXIER
Supervising Mining Recorder
[Signature]
Commissioner of Yukon Territory

Vernon, B. C.
August 1975

by: R.L. Daughtry, P.Eng.

TABLE OF CONTENTS

	<u>Page</u>
INTRODUCTION	1
PROPERTY	2
LOCATION, ACCESS	2
GEOLOGY	3
GRID ESTABLISHMENT	3
GEOCHEMISTRY	4
CONCLUSIONS	5
VALUATION OF WORK	5
STATEMENT OF QUALIFICATIONS	6

LIST OF ILLUSTRATIONS

Figure 1	Location Map	Following Page 2
Figure 2	Geochemistry, Lead in soils	In Pocket

INTRODUCTION

Rio Plata Silver Mines Ltd., 420, 475 Howe St., Vancouver, B.C., conducted a geochemical soil survey over part of their AZTEC group of mineral claims in the Keno Hill area of the Yukon Territory in July, 1975. The object of this work was to delineate anomalous areas found in the 1973 survey. A more detailed grid was established in these anomalous areas. Prospecting was carried out to check for possible related mineralization.

As part of this programme, the Ross mineral claim was explored and the results of this work are presented in this report.

Linecutting and soil sampling were conducted by R. Klanjscek and D. Hammond under the field supervision of W. R. Gilmour, B.Sc., and the compilation of data was completed by W.R. Gilmour and the writer in August, 1975.

PROPERTY

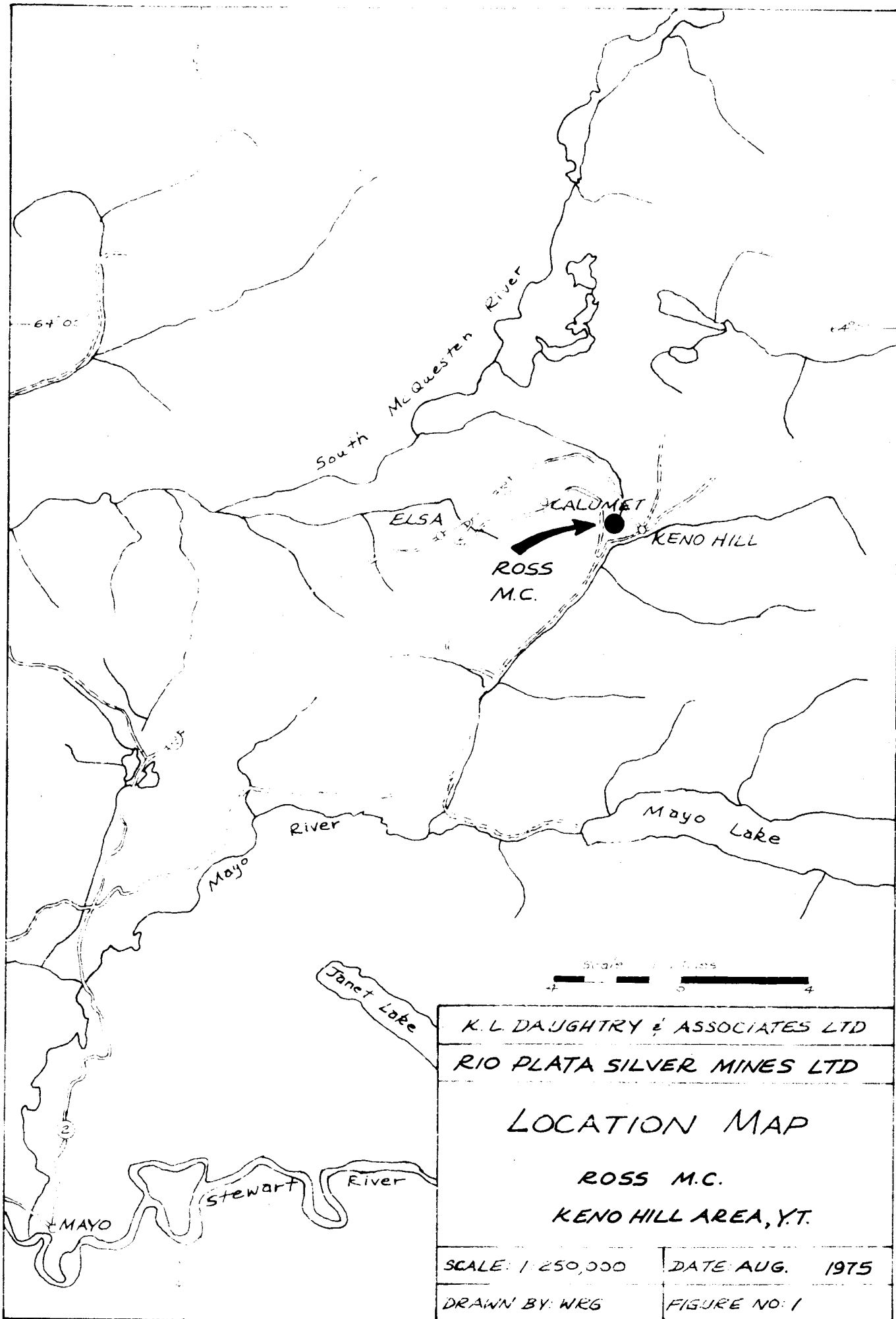
The Ross located mineral claim, Record Number Y85975, was staked on October 4th 1973 by M. Hjelt, as agent for A.D. Ross of 1101, 1775 Bellevue Avenue, West Vancouver, B.C. Mr. Ross presently holds the claim in trust for Rio Plata Silver Mines Ltd., 420, 475 Howe St., Vancouver, B.C.

The Ross claim is part of the AZTEC group of claims owned by Rio Plata Silver Mines. It is bounded on the northeast by the Caliente M.C. (Lot 572) and on the southeast by the Mexico M.C. (Lot 574).

LOCATION, ACCESS

The Ross claim straddles Hinton Creek at the 3200-foot elevation on the eastern slope of Galena Hill in the Keno Hill area of the Yukon Territory. The town of Elsa is 4.2 miles to the west and Keno City is 1.4 miles to the east. (Figure 1)

Access to the property is gained by the old highway from Keno City to Calumet which crosses the upper part of the claim.



K. L. DAUGHTRY & ASSOCIATES LTD	
RIO PLATA SILVER MINES LTD	
LOCATION MAP	
ROSS M.C.	
KENO HILL AREA, Y.T.	
SCALE: 1:250,000	DATE: AUG. 1975
DRAWN BY: WRG	FIGURE NO: 1

GEOLOGY

The Cretaceous Central Quartzite formation underlies the entire claim. Quartzites and phyllites of this formation generally strike easterly and dip about 35° to the south.

No mineralized vein faults of the Keno Hill type are known on the property. A major cross-fault strikes easterly across the Ross claim south of Hinton Creek.

GRID ESTABLISHMENT

A grid, at 250-foot intervals, was established over anomalous areas of the AZTEC group in July 1975. Lines were cut, chained, and picketed at 50-foot intervals. Three new north-south lines were established on the Ross Claim, totalling about 0.3 line miles (Figure 2).

GEOCHEMISTRY

Soil samples were collected along the north-south grid lines, at 50-foot intervals, with a grubhoe, and placed in numbered kraft wet-strength paper bags. All pertinent field data were recorded on data sheets. Samples were analyzed for lead by Bondar-Clegg and Co. Ltd. of North Vancouver, B.C. using hot aqua regia digestion and atomic absorption techniques. Lead content was reported in parts per million.

The nature of the soil on the Ross claim varies from silty to sandy brown residual material. Samples were collected beneath the humus at depths varying from 2 to 10 inches. Permafrost is present everywhere beneath undisturbed vegetation.

Figure 2 presents the results of the soil survey. Lead values range from 20 to 740 ppm., with samples containing up to 45 ppm. lead considered as background. The highest values are in the area of Hinton Creek. These are probably related to a mineralized source above the road.

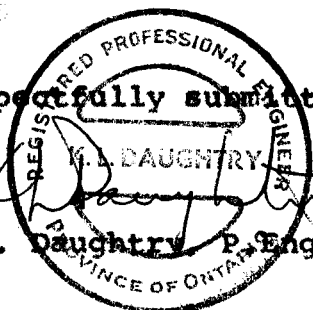
CONCLUSIONS

The geochemical soil survey on the Ross mineral claim has shown high lead values to occur in soils in the area of Hinton Creek, probably related to mineralization up-slope.

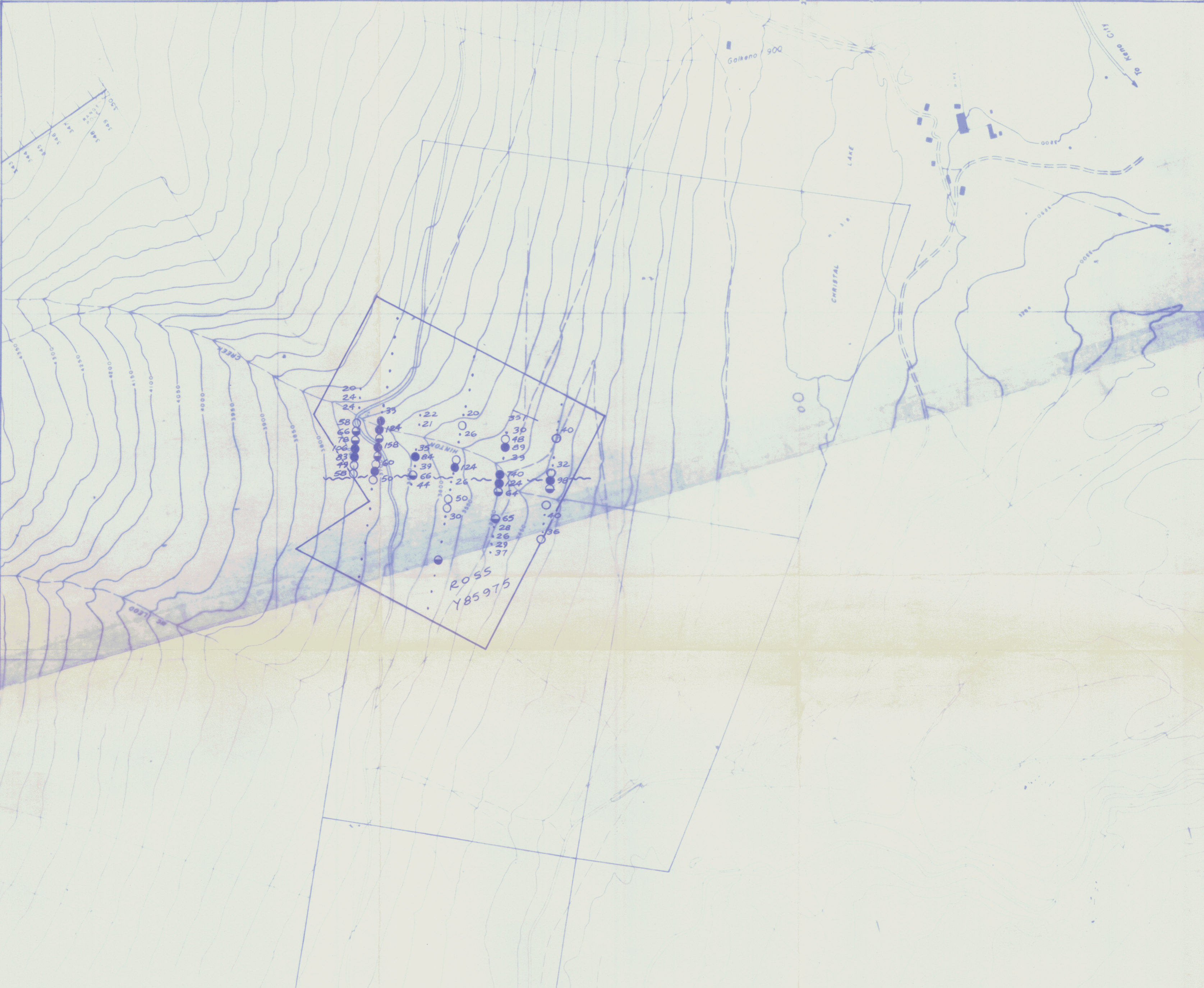
VALUATION OF WORK

Linecutting and grid establishment: 0.3 miles @ \$160 per mile	\$ 48.00
Geochemical Soil Survey: 45 samples @ \$3.50 per sample	157.50
Compilation and interpretation of data	<u>75.00</u>
TOTAL	<u>\$280.50</u>

Respectfully submitted,

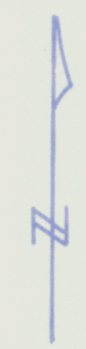
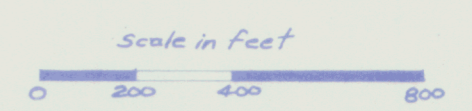

K.L. Daughtry P. Eng.

Vernon, B.C.
August 1975.



LEGEND

- sample location, 1973 survey
- 31 sample location (ppm Pb), 1975 survey
- possibly anomalous 46-60 ppm
- anomalous 61-80 ppm
- strongly anomalous > 80 ppm
- ~ ~ ~ post-ore fault, approximate
- T₃₅ bedding attitude



K.L. DAUGHTRY & ASSOCIATES LTD

RIO PLATA SILVER MINES LTD
AZTEC PROPERTY
KENO HILL, Y.T.

GEOCHEMISTRY
Pb in soils
Ross M.C.

NB. Base Map from United Keno Hill Mines Ltd
To reduce to Mean Sea Level, subtract
339 feet

SCALE: 1" = 400'	DATE: AUGUST 1975
DRAWN BY: WRG	FIGURE NO: 2