

REPORT

on

SOMETHING FR. MINERAL CLAIM

KENO HILL AREA

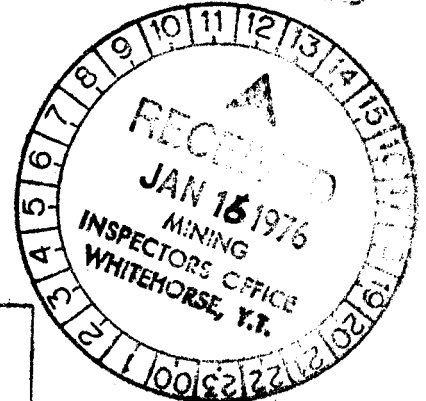
YUKON TERRITORY

for

RIO PLATA SILVER MINES LTD.

420, 475 Howe St.,

Vancouver, B. C.



This report has been examined by the Geological Evaluation Unit and is recommended to the Commissioner to be considered as representation work in the amount of \$100.00

[Signature]
Resident Geologist or
Resident Mining Engineer

Considered as representation work under Section 53 (4) Yukon Quartz Mining Act.

B.R. BAXTER

Supervising Mining Recorder

[Signature]
Commissioner of Yukon Territory

Vernon, B.C.

August 1975

By: *[Signature]* Daughtry, P.Eng.

92063

TABLE OF CONTENTS

	<u>Page</u>
INTRODUCTION	1
PROPERTY	2
LOCATION, ACCESS	2
GEOLOGY	3
GRID ESTABLISHMENT	4
GEOCHEMISTRY	4
CONCLUSIONS	5
VALUATION OF WORK	6
STATEMENT OF QUALIFICATIONS	7

LIST OF ILLUSTRATIONS

Figure 1	Location Map	Following Page 2
Figure 2	Geochemistry: Soil Survey	In Pocket

INTRODUCTION

In July of 1975, Rio Plata Silver Mines Ltd. conducted a geochemical soil survey over part of their FORMO group of claims in the Keno Hill area of the Yukon Territory. The emphasis of the programme was to delineate anomalous areas found in the 1973 survey.

A more detailed picket-line grid was laid out over the anomalous areas. The Something Fr. located mineral claim was explored as part of this programme and the results of this work are presented in this report.

Linecutting and soil sampling were conducted by J. Ross and R. Klanjscek, under the field supervision of W. R. Gilmour, BSc, in July 1975, and the compilation and interpretation of data was completed by W. R. Gilmour and the writer in August 1975.

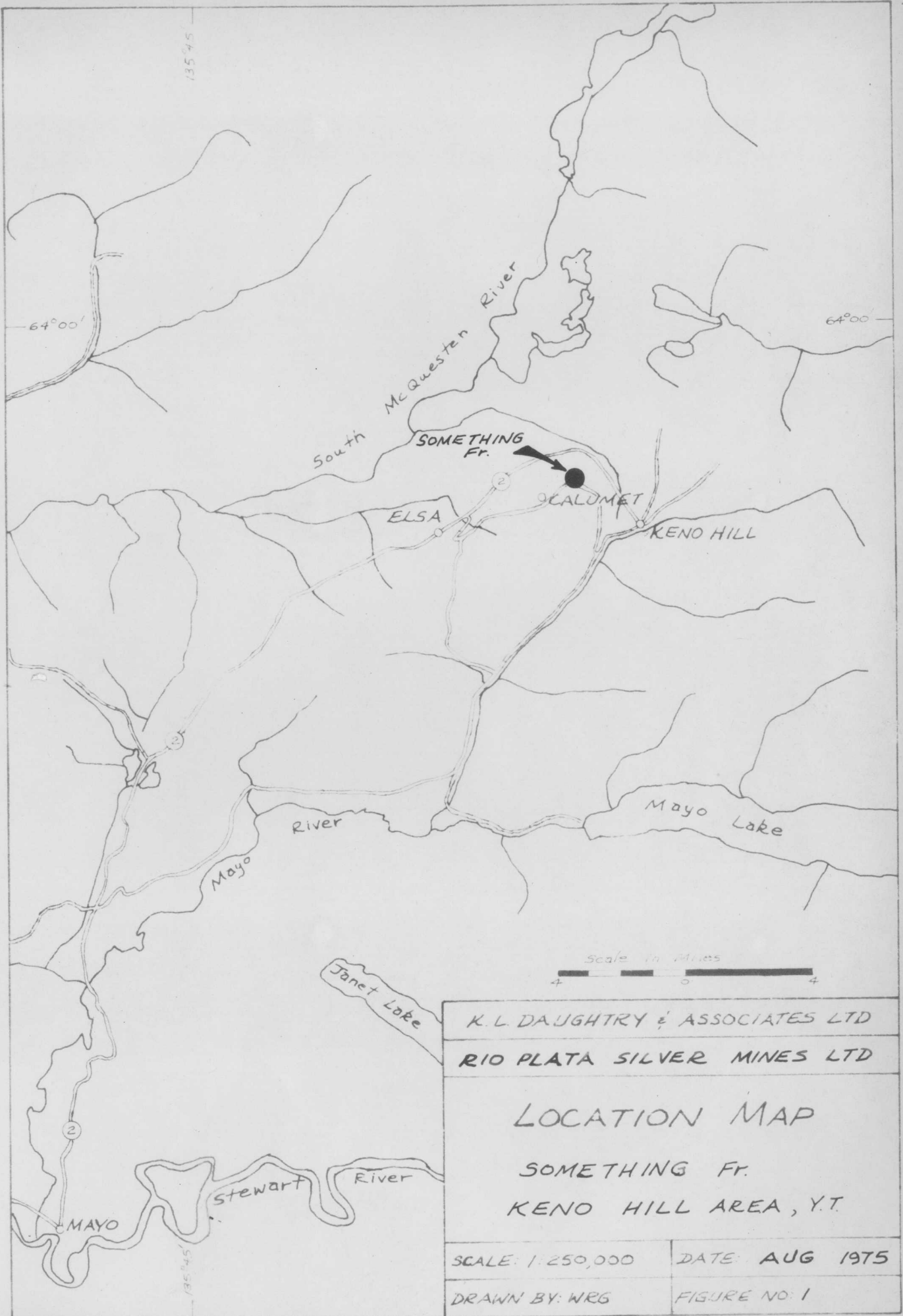
PROPERTY

The Something Fr. located mineral claim, Record Number Y84831, is held by A.D. Ross, 1101, 1775 Bellevue Avenue, West Vancouver, B.C. in trust for Rio Plata Silver Mines Ltd., 420, 475 Howe Street, Vancouver, B.C. The claim is a relocation of the former surveyed mineral claim the Something Fr. (Lot 659), having an area of 13.02 acres, and was staked by A.D. Ross on August 7, 1973.

The Dorothy B.C. (Lot 650) and the Tagish B.C. (Lot 651) adjoin the Something Fr. on the north and south respectively. The Claim is bounded on the west and east by the Carol Fr. located claim and the Skookum B.C. (Lot 652) respectively. With the exception of the Carol Fr. all of the above claims are owned by Rio Plata Silver Mines (Figure 2).

LOCATION, ACCESS

The Something Fr. is at the 3500-foot elevation on the north slope of Galena Hill in the Keno Hill area of the Yukon Territory (Figure 1). The Claim is 3.7 miles northeast of the town of Elsa and 2.8 miles northwest of Keno City.



Access to the claim is gained by walking about 1500 feet down from a point on the old Calumet-Keno Hill highway opposite the UN Adit of United Keno Hill Mines.

GEOLOGY

The Something Fr. is underlain by phyllite and quartzite of the Jurassic(?) Lower Schist formation intruded by discontinuous bodies of altered chloritic rock (greenstone). All rocks generally strike easterly and dip south at between 20° and 40°.

The property is believed to be crossed by an extension of the Forno vein fault, a mineralized structure exposed in surface and underground workings about 3500 feet to the north-northeast. Rio Plata Silver Mines are exploring the Something Fr. for silver-lead-zinc mineralization similar to that in the FORNO vein.

GRID ESTABLISHMENT

A picket-line (0.1 mile) was established on the Something Fr.

GEOCHEMISTRY

Soil samples were collected along the east-west line at 25-foot intervals. Samples were collected with a grubhoe and placed in numbered kraft wet-strength paper bags. Samples were analyzed for lead by Bondar-Clegg and Co. Ltd. of North Vancouver, using hot aqua regia digestion and atomic absorption techniques. Metal contents were reported in parts per million.

The soil in the Something Fr. claim is generally organic-rich and water-saturated. Permafrost is present within a few inches of surface where the moss has not been disturbed. A sandy to silty layer of residual soil occurs beneath a variable thickness of black organic materials.

All samples collected were from this horizon, which varied in depth from 4 to 12 inches. Figure 2 presents the analytical results for all samples collected. Lead values ranged from 22 to 33 ppm. No definite anomalous values occurred on the Something Fr.

The detailed soil survey on the rest of the FORMO group, north and south of the Something Fr., indicates a vein fault passing through the area.

CONCLUSIONS

1. A more detailed geochemical soil survey over the Something Fr. failed to indicate the vein fault that is indicated to the north and south of the claims.
2. More detailed soil sampling is required to locate and delineate the source of the soil anomaly in the area.
3. A ground electromagnetic survey is recommended to be carried out over the geochemically anomalous areas to delineate any mineralized vein fault that might occur.

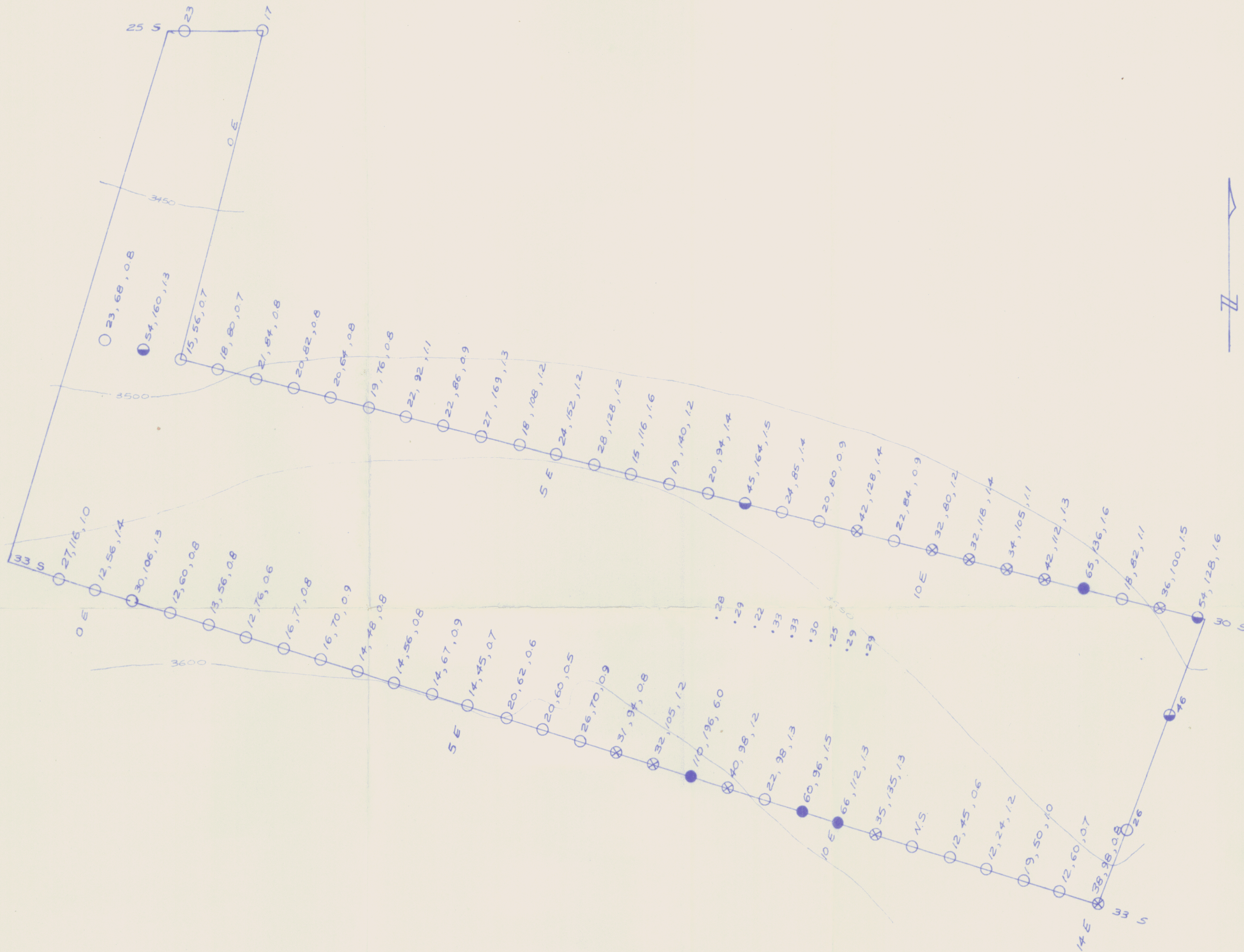
VALUATION OF WORK

Linecutting and Grid Establishment:	
0.1 mile @ \$160 per mile	\$ 16.00
Geochemical Soil Survey:	
9 samples @ \$3.50 per sample	31.50
Compilation and Interpretation of data	60.00
	<u>\$107.50</u>

Respectfully submitted,

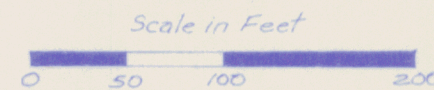
A circular professional seal for K.L. Daugherty, a Registered Professional Engineer in the State of Ohio. The seal contains the text "REGISTERED PROFESSIONAL ENGINEER" around the top inner edge and "STATE OF OHIO" around the bottom inner edge. In the center, it says "K.L. DAUGHTERY". A handwritten signature is written across the seal.
K. L. Daugherty, R. Eng.

Vernon, B. C.
August 1975



- 30 sample location (ppm Pb), 1975 survey
- sample location, 1973 survey
- 27, 60, 0.9 ppm Pb, ppm Zn, ppm Ag
- ⊗ 31 ppm - 44 ppm Pb
- 45 ppm - 59 ppm Pb
- ≥ 60 ppm Pb
- 3500 — elevation contour in feet (50' intervals)

LEGEND



K.L. DAUGHTRY & ASSOCIATES LTD	
RIO PLATA SILVER MINES LTD	
GEOCHEMISTRY: SOIL SURVEY SOMETHING FR.	
KENO HILL, Y.T.	
SCALE: 1" = 100'	DATE: AUG. 1975
DRAWN BY: WRG	FIGURE NO: 2