

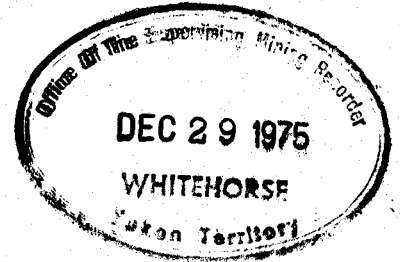
1975 EXPLORATION REPORT

ALE MINERAL CLAIM GROUP



Mayo Mining District

Yukon Territory



N.T.S. 106-C-13

Latitude: 64° 52' N

Longitude: 133° 45' W

This report has been examined by the Geological Evaluation Unit and is recommended to the Commissioner to be considered as representation work in the amount of \$750.00

D.B. Craig

District Geologist or
~~Mining Engineer~~

Considered as representation work under Section 35 of the Yukon Quartz Mining Act.

S.R. Baxter

S.R. BAXTER
Supervising Mining Recorder
for Commissioner of Yukon Territory



By:

P. Dean

CYPRUS ANVIL MINING CORPORATION

October, 1975

090053

TABLE OF CONTENTS

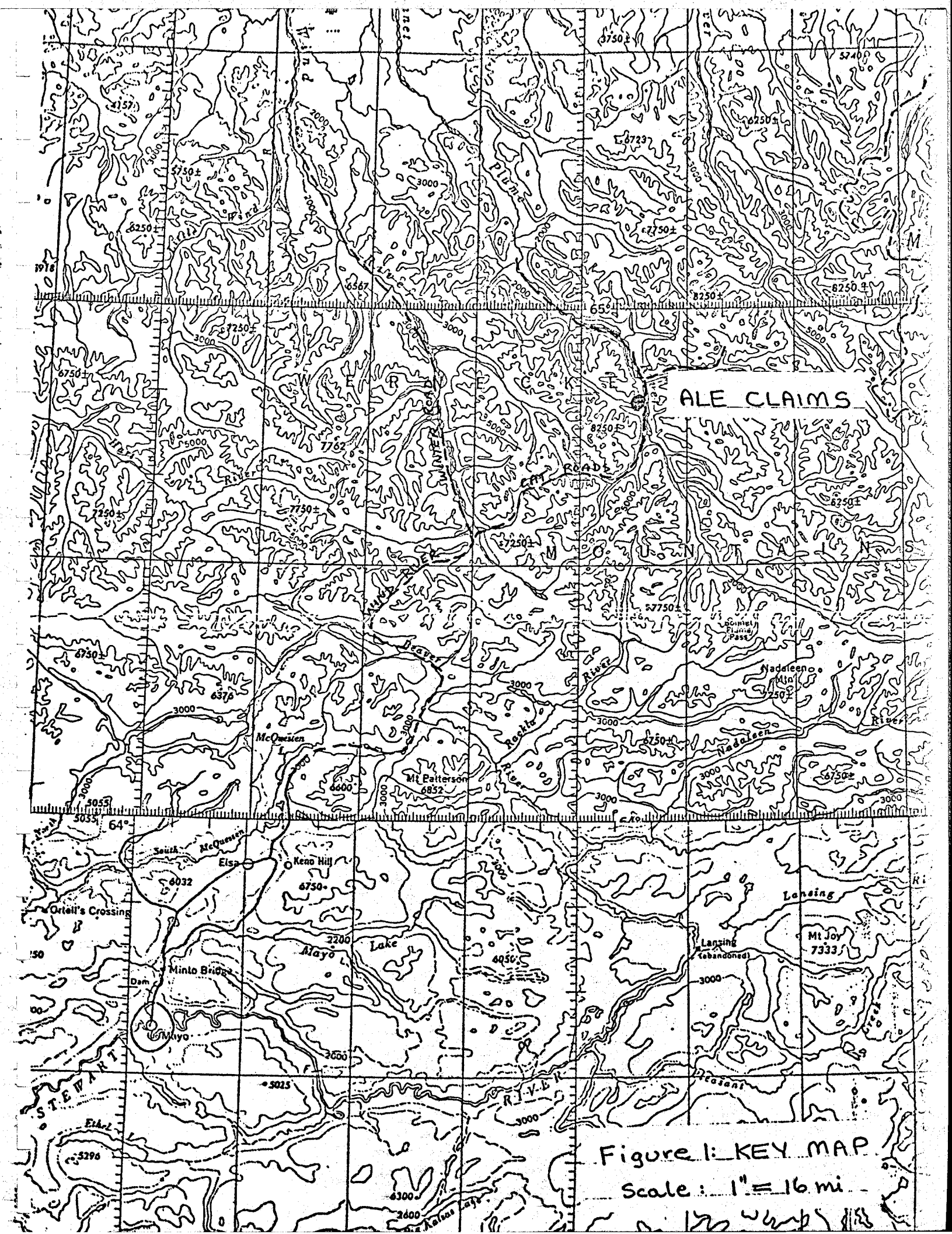
	<u>Page</u>
LIST OF CLAIMS	
INTRODUCTION	1
SUMMARY AND CONCLUSIONS	1
GEOLOGY	2
GEOCHEMISTRY	2
PROPOSED EXPLORATION	3

FIGURES

Figure 1	Key Map
Figure 2	Claim Map
Figure 3	Geochemical Values Map

APPENDICES

Appendix I	List of Personnel
Appendix II	Summary of Costs
Appendix III	Affidavit Supporting Summary of Costs
Appendix IV	Vouchers Supporting Summary of Costs



ALE CLAIMS

Figure 1: KEY MAP

Scale: 1" = 16 mi

LIST OF CLAIMS

<u>Claims</u>	<u>Grant Nos.</u>	<u>Recording Dates</u>
Ale 1 - 6	YA1156 - YA1161	August 29, 1975

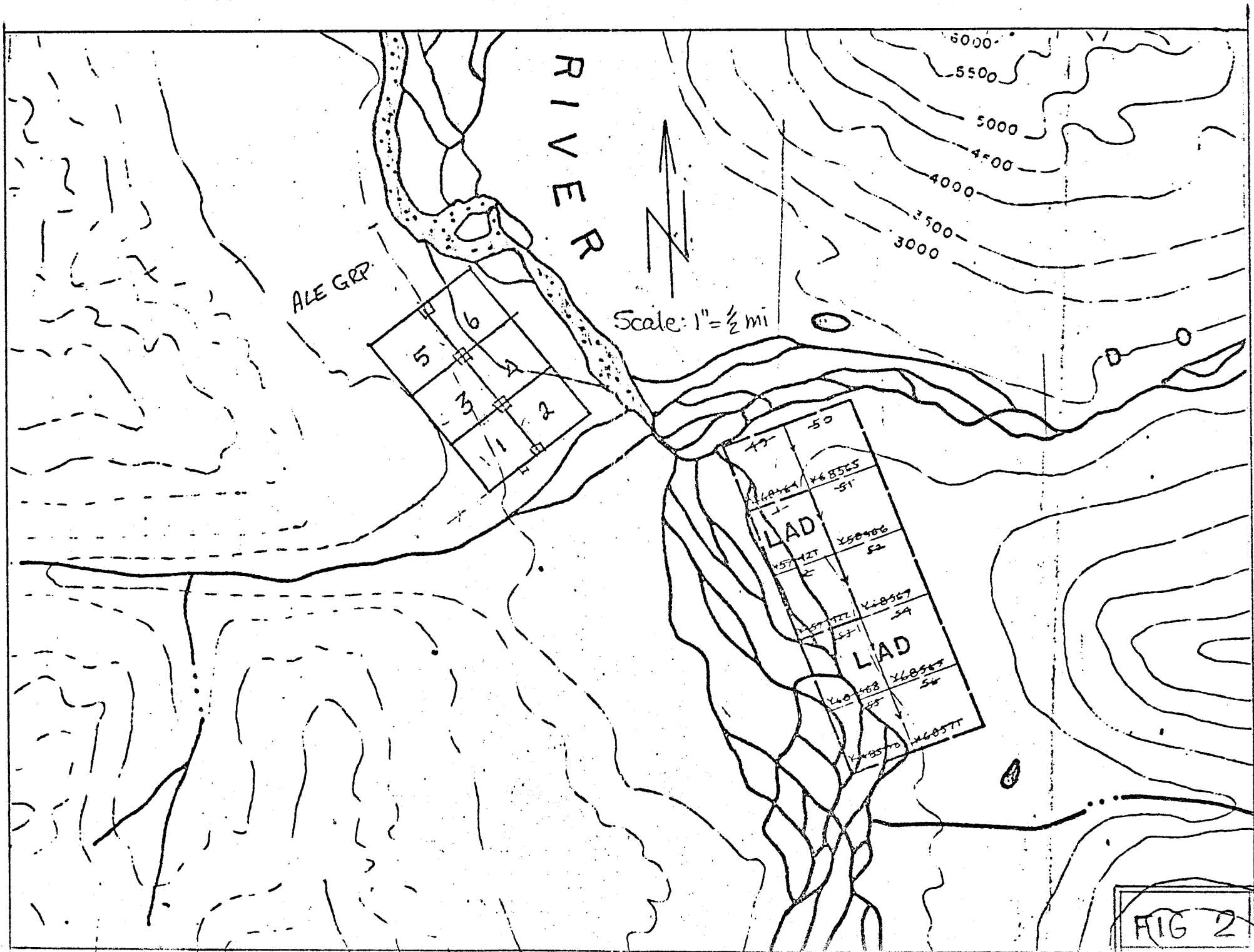


FIG 2

Cyprus Anvil Mining Corporation

330, 355 Burrard Street Telex 04508594
Vancouver, British Columbia
V6C 2G8
Telephone (604) 687-2586

1975 EXPLORATION REPORT
ALE MINERAL CLAIM GROUP

INTRODUCTION

The Ale claims were staked on August 4, 1975, to cover showings of lead and zinc mineralization in carbonate rocks which outcrop on the west bank of the Bonnet Plume River at approximately 64°52' N, 133°45' W (Figure 1). Prospecting and a limited amount of soil sampling were carried out on the claims during the 1975 season. Access to the property is only possible by helicopter, either from Fairchild Lake, 12 miles to the north and the nearest lake suitable for float planes, or directly from Mayo.

SUMMARY AND CONCLUSIONS

Sulfide showings outcropping intermittantly over a length of 1,600 feet were discovered on the property, with the mineralized zone covered by overburden at either end. An elongate soil geochemical anomaly is associated with these showings, which is cut off to the south by the deep overburden of an alluvial fan, and is open to the northwest. The length of this geochemical anomaly is 3,000 feet, and peak values are 3.0% zinc and 0.7% lead. The claims warrant further exploration, which should consist of additional soil sample coverage, hand trenching on the main showings, and geologic mapping of the mineralized zone and surrounding area.

... 2

CYPRUS ANVIL

GEOLOGY

The claim group was not mapped geologically during the 1975 field work. According to the mapping done by the Geological Survey, the formations underlying the claim group are predominantly carbonates of Helikian age. The mineralization consists of open space fillings of pyrite, galena and sphalerite in brecciated portions of a buff-weathering dolostone. Hydrozincite is present on weathered surfaces of mineralized material, and prominent gossans have formed on pyrite rich sections. The showings occur along a strike length of 1,600 feet, and are on strike with similar showings on the former IAD claims, 8,000 feet to the southeast on the east bank of the Bonnet Plume River. Possible extensions of the mineralized zone on the Ale claims are hidden by overburden cover to the north and the south. The showings may be related to brecciation along a fault structure at an attitude of 35° W of N. Even the best-exposed showings on the claims are covered by much talus and overburden, making it very difficult to make any estimate of the width or grade of the mineral zone.

GEOCHEMISTRY

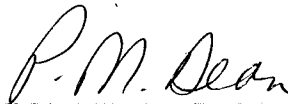
A small grid was established on the claim group, and soil samples were taken over a portion of the mineralized zone on 200 foot centres. The samples were taken from the B and C soil horizons, according to standard practise, and were analysed by Acme Analytical Laboratories at Dawson City. The -80 mesh fraction of the samples was subjected to a total extraction acid leach, followed by analysis on an atomic absorption instrument for copper, lead and zinc. Values for lead and zinc have been plotted in Figure 3; values for copper were all low and

were not plotted. Values obtained for lead peaked to 7,100 ppm and for zinc ran up to 30,000 ppm. The anomalous values extend beyond the known showings to the northwest, but are cut off abruptly to the southeast by the deep overburden of an alluvial fan.

PROPOSED EXPLORATION

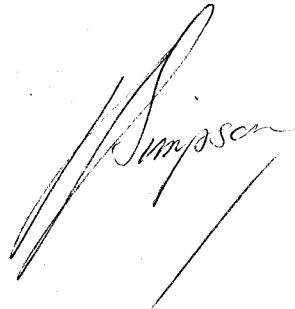
The soil sampling coverage should be extended well off the claims to the west and north to close out the anomaly. Particular attention should be paid to sampling all ground water seepages draining into the west side of the Bonnet Plume River north of the claims, as these seepages could indicate the presence of mineralization which is too deeply covered by overburden to show up in surface soil samples. Some hand trenching and clearing should be done on the best-exposed mineralized outcrops to obtain a meaningful assay across the width of the zone. Finally, the claim group and surrounding area should be mapped geologically.

Respectfully submitted,



P. DEAN

October, 1975



Appendix I

LIST OF PERSONNEL

R. C. Carne	Geologist	2222 Stephens Street Vancouver, B.C.
A. Tench	Sampler	755 - 13th Street West Vancouver, B.C.

APPENDIX II

SUMMARY OF COSTSAle Claims Expenditure Summary
to October 31, 1975

	<u>Reference</u>	<u>Amount</u>
Salaries and wages	Schedule B	\$ 117.12
Assays	Schedule C	110.00
Field Equipment & Supplies	Schedule D	27.79
Camp Support	Schedule E	45.85
Fuel	Schedule F	39.20
Rotary Wing	Schedule G	327.07
Fixed Wing	Schedule H	47.29
Miscellaneous Transportation	Schedule I	28.40
District Expense	Schedule J	19.32
		<u>\$ 762.04</u>
Administration - 10%		<u>76.20</u>
TOTAL		<u><u>\$ 838.24</u></u>

NOTE: Copies of invoices for amounts over \$100.00 are included. Other copies will be provided upon request.

Cyprus Anvil Mining Corporation

330, 355 Burrard Street Telex 04508594
Vancouver, British Columbia
V6C 2G8
Telephone (604) 687-2586

APPENDIX III

AFFIDAVIT SUPPORTING SUMMARY OF COSTS

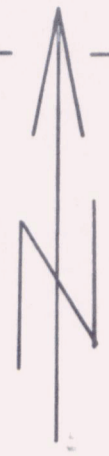
I, PETER DEAN, Geologist, Cyprus Anvil Mining Corporation, of Vancouver, British Columbia, do hereby state that, to the best of my knowledge and belief, the statement of costs presented in this report (1975 Exploration Report, Ale Mineral Claim Group) is both correct and true.

P. M. Dean
PETER DEAN

15 Dec 1975
(Date)

W. H. C. Skindis
Notary Public in and for the
Province of British Columbia

CYPRUS ANVIL



SCALE: 1" = 400 FT

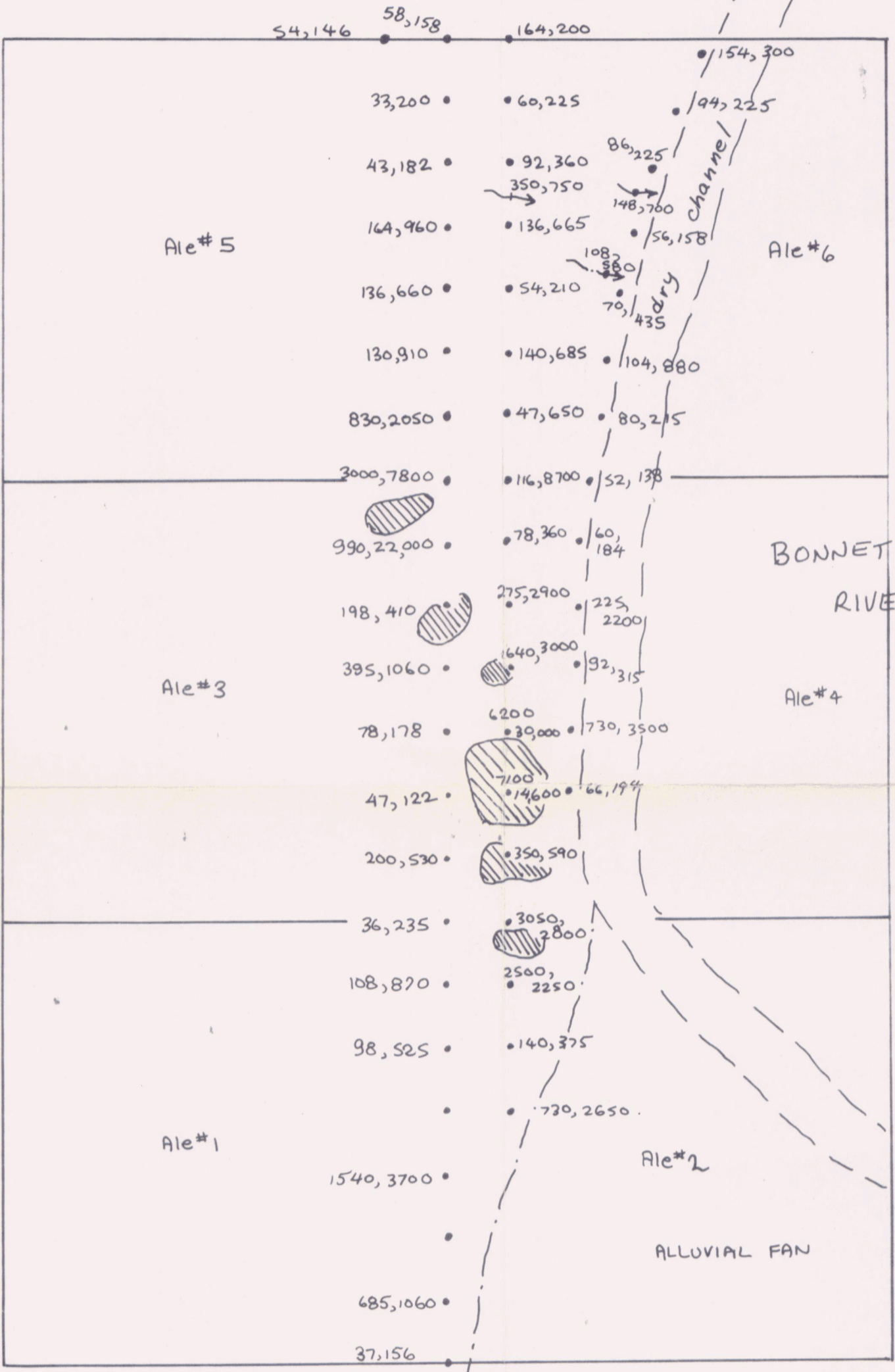


FIGURE: 3

CYPRUS-ANVIL MINING CORPⁿ
 REEF PROJECT
 Ale Claim Group 106C-13
 GEOCHEMICAL VALUES MAP

- SOIL SAMPLE SITE with VALUES FOR Pb, Zn
- ◐ MINERALIZED OUTCROP OR TALUS

P. DEAN OCT. 1975