

1975 EXPLORATION REPORT  
GREMLIN MINERAL CLAIM GROUP



Mayo Mining District  
Yukon Territory



N.T.S. 106-E-2

Latitude: 65°11' N

Longitude: 134°38' W

This report has been examined by the  
Geologic Division and is recom-  
mended to be considered to be consid-  
ered as a report of value to the amount of

\$2500.00

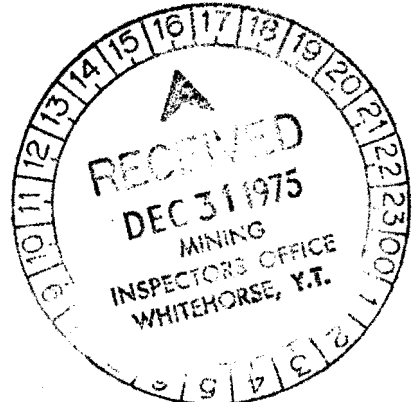
*[Signature]*

or  
Mining Engineer

Considers the representation work under  
Section 35 (3) of the Quartz Mining Act.

MR. BAXTER  
Subordinating Mining Records

Commissioner of Yukon Territory



By:

P. Dean

CYPRUS ANVIL MINING CORPORATION

October, 1975

070052



TABLE OF CONTENTS

	<u>Page</u>
LIST OF CLAIMS	
INTRODUCTION .....	1
SUMMARY AND CONCLUSIONS .....	1
GEOLOGY .....	2
GEOCHEMISTRY .....	3
PROPOSED EXPLORATION .....	3

FIGURES

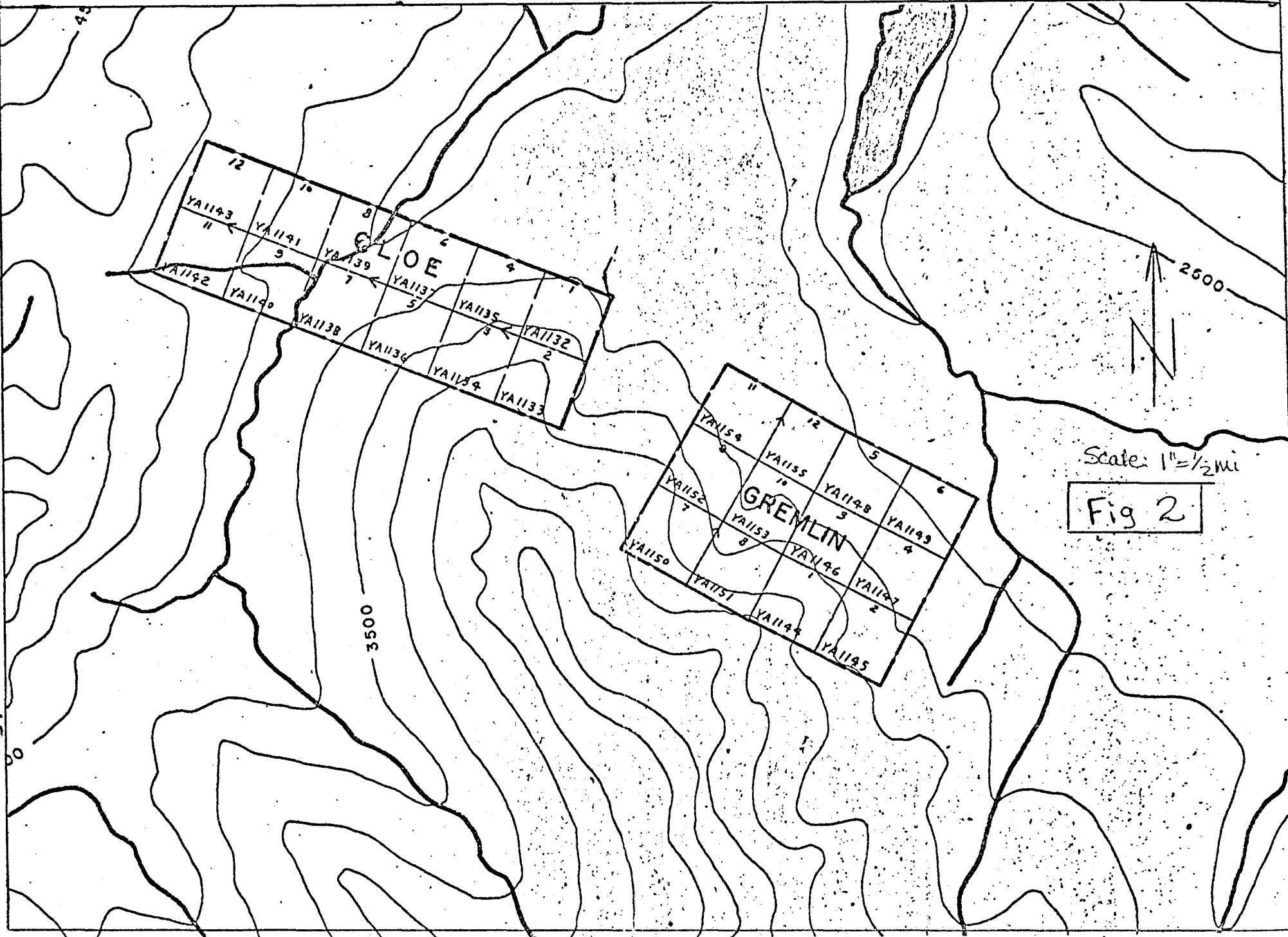
Figure 1	Key Map
Figure 2	Claim Map
Figure 3	Geochemical Values Map

APPENDICES

Appendix I	List of Personnel
Appendix II	Summary of Costs
Appendix III	Affidavit Supporting Summary of Costs
Appendix IV	Vouchers Supporting Summary of Costs

LIST OF CLAIMS

<u>Claims,</u>	<u>Grant Nos.</u>	<u>Recording Dates</u>
Gremlin 1 - 12	YA1144 - YA1155	August 29, 1975



Scale: 1" = 1/2 mi

Fig 2

Cyprus Anvil Mining Corporation

330, 355 Burrard Street  
Vancouver, British Columbia  
V6C 2G8  
Telephone (604) 687-2586

Telex 04508594

1975 EXPLORATION REPORT  
GREMLIN MINERAL CLAIM GROUP

INTRODUCTION

The Gremlin Claims, located west of the Bonnet Plume River at  $65^{\circ}11'N$  x  $134^{\circ}38' W$ , were staked during August, 1975, after a regional silt sampling program lead to the discovery of an intense copper geochemical anomaly in stream sediments. Several showings of chalcopyrite mineralization were discovered in Helikian sedimentary rocks when the silt anomaly was prospected.

The copper appears to be mainly restricted to siderite-pyrite-chalcopyrite veins, but some is also associated with a conformable lens of pyrite interbedded with conglomerates and sandstones. The only exploration work completed on the claims during the 1975 season was prospecting, some assaying of mineralized outcrop samples, and a limited amount of geochemical soil sampling.

Access to the property is by float plane to Kiwi Lake, one mile to the north, or by helicopter directly to the claim group.

SUMMARY AND CONCLUSIONS

The soil sampling produced consistantly anomalous results along both banks of the stream for a length of 2,500 feet,

with copper values in soils ranging up to 15,000 ppm. The highest anomalous values are not associated with the showings seen during the 1975 work. A limited program of further prospecting, geochemical sampling and hand trenching is proposed for 1976.

#### GEOLOGY

No geologic mapping was done on the claims during 1975.

According to Geological Survey of Canada Open File #279, the claims are underlain by Unit Ho, which consists of undivided Helikian clastic formations. Locally the rocks comprise complexly folded black shales, sandstones, and conglomerates, all of which have been cut by a number of faults. Mapping at a very detailed scale would be required to make sense of the structural complexities observed.

Showings of two types occur on the claims. Most of the copper is in veins of siderite-barite-pyrite and chalcopryrite, which average a few feet in thickness. Usually the wall rocks of these veins also contain some disseminated chalcopryrite. Most veins appear to cross-cut the bedding, but occasionally they occur as apparently conformable lenses where they have been injected along a bedding plane. A chip sample across a twenty-one foot length perpendicular to the strike of one of these veins, including some weakly mineralized wall rock, contained 1.33% copper.

The second type of showing consists mainly of pyrite, which occurs as a nearly massive lens paralleling bedding, and as

heavy disseminations in conglomerates and sandstones. A chip sample across a true thickness of 38 feet in pyritic conglomerate contained 0.53% copper, and a second chip sample across ten feet of a massive pyrite lens contained 0.29% copper and 0.8 oz./ton silver. Erythrite stain or cobalt bloom occurs on occasional pieces of float in the creek, but the best assay obtained was 0.09% cobalt, from a grab sample of vein material.

#### GEOCHEMISTRY

Geochemical work on the claims consisted of a line of soil samples taken along both banks of the creek at about 200-foot spacing (Figure 3). The samples were bank samples taken from avalanche slide material above the level of any possible contamination by creek sediments. The analytical procedure consisted of sieving to separate a -80 mesh fraction, followed by a total hot acid extraction leach and analysis by atomic absorption methods. Values were consistently anomalous in copper along both banks for about 2,500 feet. The highest values obtained, 8,000 and 15,000 ppm copper from two consecutive samples, were several hundred feet downstream from any observed copper mineralization.

#### PROPOSED EXPLORATION

Contour soil lines, detailed geological mapping and hand trenching are required to further evaluate the potential of the claim group. This work will take about five or six days for

a crew of two. The crew could camp on Kiwi Lake and avoid using helicopter transport, but some walking time would be saved by putting the camp right on the property.

Respectfully submitted,

*P. M. Dean*

P. DEAN

October, 1975

*[Handwritten signature]*

Appendix I

LIST OF PERSONNEL

P. Dean	Geologist	1405 - 1011 Beach Avenue Vancouver, B.C.
R. C. Carne	Geologist	2222 Stephens Street Vancouver, B.C.

## APPENDIX II

SUMMARY OF COSTSGremlin Claims Expenditure Summary  
to October 31, 1975

	<u>Reference</u>	<u>Amount</u>
Salaries and Wages	Schedule B	\$ 227.76
Assays	Schedule C	122.20
Equipment and Supplies	Schedule D	41.69
Camp support	Schedule E	68.78
Rotary Wing	Schedule F	860.44
Fixed Wing	Schedule G	90.03
Miscellaneous Transportation	Schedule H	42.60
District Expense	Schedule I	29.98
		<u>\$ 1,482.48</u>
Administration - 10%		148.25
TOTAL		<u><u>\$ 1,630.73</u></u>

NOTE: Copies of invoices in excess of \$100.00 are included. Other copies are available upon request.

Cyprus Anvil Mining Corporation

330, 355 Burrard Street  
Vancouver, British Columbia  
V6C 2G8  
Telephone (604) 687-2586

Telex 04508594

APPENDIX III

AFFIDAVIT SUPPORTING SUMMARY OF COSTS

I, PETER DEAN, Geologist, Cyprus Anvil Mining Corporation, of Vancouver, British Columbia, do hereby state that, to the best of my knowledge and belief, the statement of costs presented in this report (1975 Exploration Report, Gremlin Mineral Claim Group) is both correct and true.

*P. M. Dean*

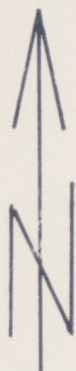
PETER DEAN

*15 Dec 1975*

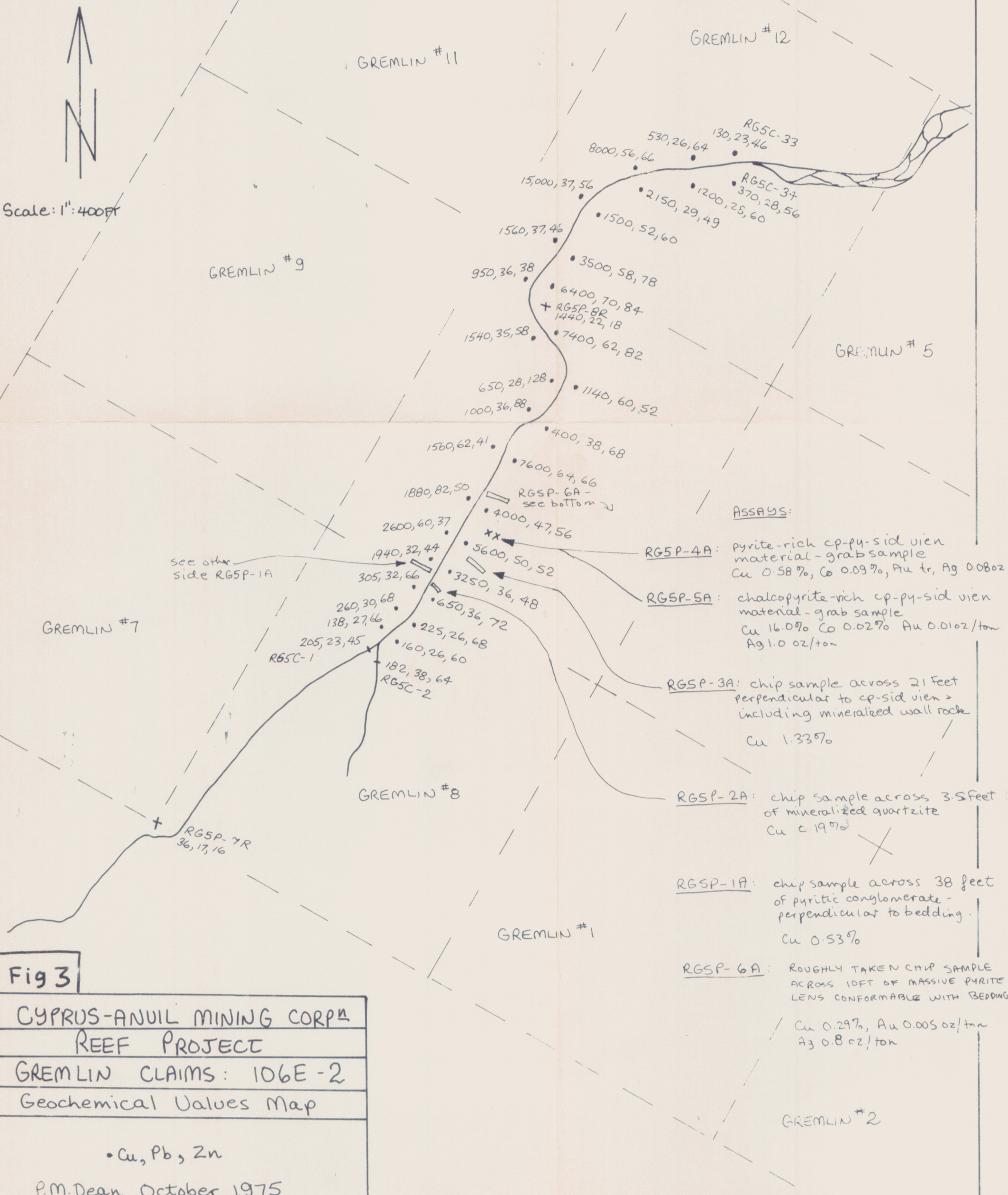
(Date)

*Mary J. Saunders*  
Notary Public in and for the  
Province of British Columbia

**CYPRUS ANVIL**



Scale: 1" = 400 FT



ASSAYS:

- RG5P-4A: pyrite-rich cp-py-sid vien material - grab sample  
Cu 0.58%, Co 0.09%, Au tr, Ag 0.08oz
- RG5P-5A: chalcopyrite-rich cp-py-sid vien material - grab sample  
Cu 16.07% Co 0.02% Au 0.01oz/ton  
Ag 1.0 oz/ton
- RG5P-3A: chip sample across 21 feet perpendicular to cp-sid vien > including mineralized wall rock  
Cu 1.33%
- RG5P-2A: chip sample across 3.5 feet of mineralized quartzite  
Cu c. 1.9%
- RG5P-1A: chip sample across 38 feet of pyritic conglomerate - perpendicular to bedding.  
Cu 0.53%
- RG5P-6A: ROUGHLY TAKEN CHIP SAMPLE ACROSS 10 FT OF MASSIVE PYRITE LENS CONFORMABLE WITH BEDDING  
Cu 0.29%, Au 0.005 oz/ton  
Ag 0.8 oz/ton

**Fig 3**  
 CYPRUS-ANVIL MINING CORP<sup>LD</sup>  
 REEF PROJECT  
 GREMLIN CLAIMS: 106E-2  
 Geochemical Values Map

• Cu, Pb, Zn  
 P.M. Dean October 1975