

GREAT PLAINS DEVELOPMENT COMPANY OF CANADA, LTD.

GEOLOGICAL AND GEOCHEMICAL
EVALUATION OF KEN CLAIMS



106-F-4

133°52'W 134°9' West Longitude
65°09'N 66°22' North Latitude

This report has been examined by the Geological Evaluation Unit and is recommended to the Commission to be considered as representation work in the amount of \$ 2100.00

D.B. Craig
Resident Geologist or
Resident Mining Engineer

Considered as representation work under Section 53 (4) Yukon Quartz Mining Act.

E.R. Baxter
Supervising Mining Recorder
Commissioner of Yukon Territory



May 22nd - June 25th, 1975

Bill Dave Farion
P. Geol.,

Bill Dave Farion

C O N T E N T S

SUMMARY

INTRODUCTION

1. Location
2. Property
3. Field Methods
4. Geography

GEOLOGY

1. Lithology
2. Structure

GEOCHEMISTRY

TRENCHING

CONCLUSIONS

RECOMMENDATIONS

A T T A C H M E N T S

PLATE 1	Location Map
PLATE 2	Geology Map
PLATE 3	Geochemistry-Zinc , Lead Cadmium

A. SUMMARY

1. Following the recognition of environments favourable to the formation of stratabound lead-zinc deposits, Great Plains conceived of and operated a geochemical reconnaissance program in the Bonnet Plume area of the Yukon Territory. The Ken claims, one of several claim groups staked during the 1974 exploration program, will be the subject of this report.

2. The field crew assembled to complete assessment work on the claim group moved to the base camp at Margaret Lake by May 23, 1975.

Personnel Included:

Bill Farion	Party Chief
Barry Edmonson	Student Geologist
Colin Winter	Geologist
Janet Helton	Student Geologist
Romulo Santos	Student Geologist
John Van Der Lee	Geological Assistant
Nigel Lumsden	Geological Assistant
Janet Etzkorn	Cook
Mike Hofuis	Helicopter Pilot
Paul Koovisk	Apprentice Engineer

Transwest Helicopters (1965) Ltd., of Burnaby, B.C. supplied a Hughes 500 C helicopter, while Trans North Turbo Air supplied fixed wing support from Mayo. Expediting services were provided by Stirling Expediting Services, Mayo and assaying was performed by Barringer Research, Whitehorse, Yukon.



MACKENZIE PROJECT
YUKON TERRITORY
KEN CLAIMS
LOCATION MAP

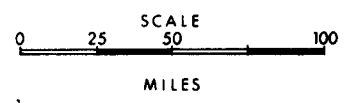
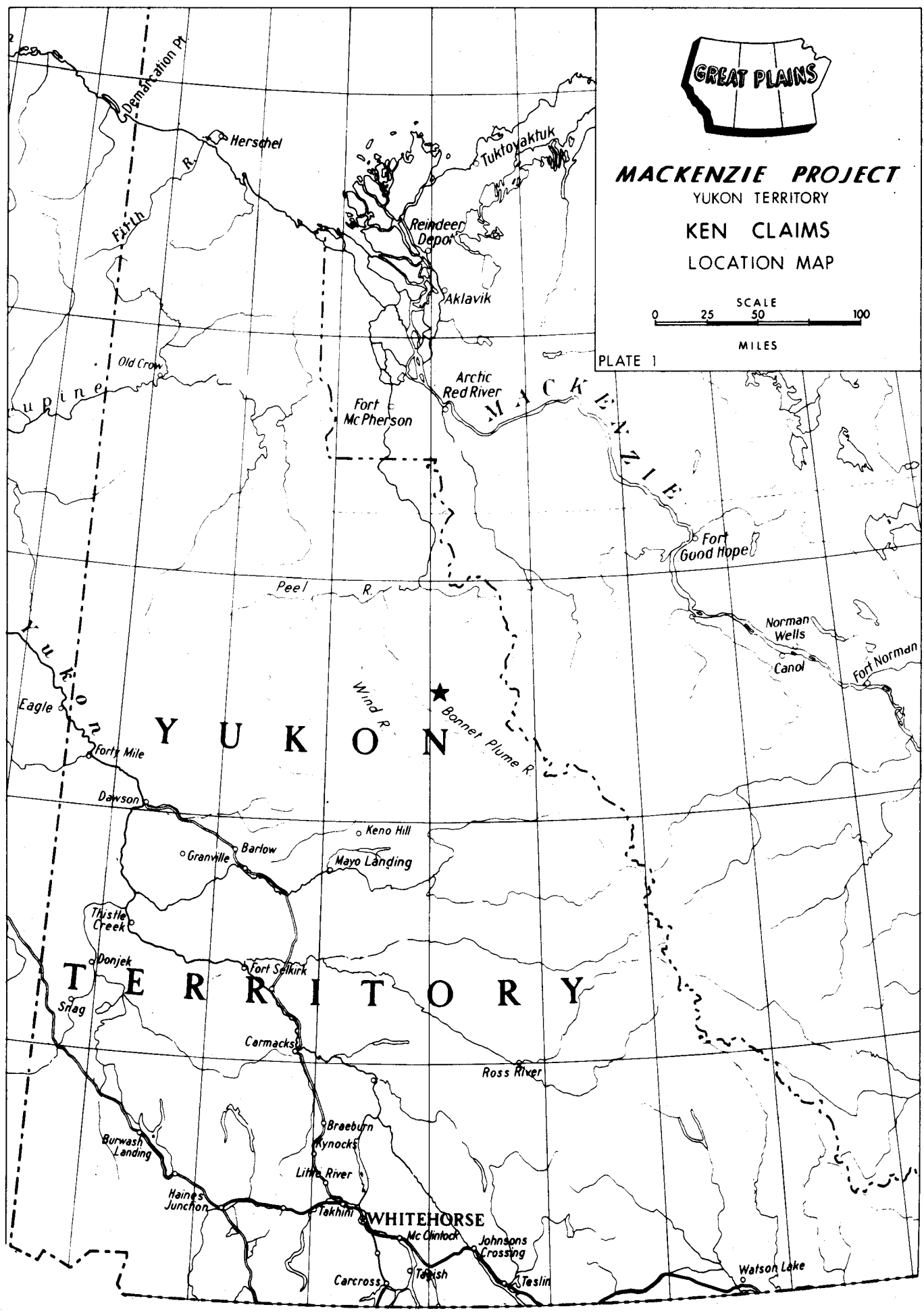


PLATE 1



B. INTRODUCTION

1. Location

The claims are located on Rapitan Creek, 14 miles east of the Bonnet Plume River, 22 miles southeast of Margaret Lake and 130 miles north of Mayo in the Mayo Mining District. N.T.S. is 106-F-4. Margaret Lake is one of the few lakes in the area on which float planes can operate.

2. Property

The property consists of 4 contiguous mineral claims straddling Rapitan Creek.

<u>Claims</u>	<u>Grant Numbers</u>
KEN 1-4	Y 95253-Y 95256

3. Field Methods

The area was mapped on a scale of 200 feet = 1 inch. A showing was discovered through the use of zinc spot test. This test utilizes a chemical which turns red when in contact with the weathering products of zinc sulphides. Three claims, Ken 1, 2 and 3, were partially covered by a geochemical soil sampling grid (Plate 2). In addition, samples from a trench, blasted to observe the extent of the mineralization, were submitted to Barringer Research for analysis.

4. Geography

The claims are in a broad river valley flanked by thick ancient alluvial terraces which hamper soil sampling. The area was burned over several years ago, with little revegetation taking place to date.

C. GEOLOGY

1. Lithology

The claims are underlain by a brecciated limestone unit and flanked by similar limestones with minor brecciation.

The units are as follows: -

<u>Unit 1a</u>	This unit consists of microcrystalline limestone, largely brecciated. Fresh surfaces are dark brown to grey, with weathered surfaces light
----------------	--

grey. The unit is well bedded with 2-4 feet beds separated by shaley partings. It is host to abundant calcite veinlets and minor vugs. Mineralization appears as partial fracture and vug infilling. Sphalerite and hydrozincite are the predominant minerals with no visible galena.

Unit 1b This unit is a microcrystalline limestone of a more massive, poorly bedded nature. It is largely unbrecciated.

Unit 2 This unit consists of more recessive flaggy limestone with beds 0.2' - 0.6' in thickness. The grey in color on fresh surface, light grey in color on weathered surface. Fractures are filled with calcite.

Unit 3 This unit consists of argillites, dark grey to black in fresh surfaces, gold to buff brown and green with red staining in weathered surfaces.

The north and south ends of the claim group at approximately the 2500 foot contour are covered by thick alluvial material.

2. Structure

The Rapitan appears to be in a breached anticline. A thrust fault with reverse folding forms the contact between the shales and the limestones of units 1 and 4. The crest of the anticline would suffer the most fracturing, providing a host for the mineralization.

D. GEOCHEMISTRY

The soil sampling grid was measured off using compass bearings and a Topofil Chain. The sample sites were flagged.

The soil consists of a well developed organic A horizon approximately two inches thick, a easily distinguished well developed B horizon of light brown fine clay material with some parent material.

Analyses were conducted by Barringer Research. Samples were dried, screened to 80 mesh, digested in perchloric acid (HCl O4), and analysed on an atomic absorption unit.

The results, which were plotted on a grid map, show a small anomalous zinc area near the trench (Plate 3). Values fall off rapidly to background readings.

E. TRENCHING

A trench, measuring 16 feet long, 3.5 feet wide and 3 feet deep, was blasted in the area where hydrozincite had been found. Pods of sphalerite were found in small vugs and fractures in the limestone breccia. A grab sample, BF 5-5-27-10 assayed 8.0% zinc, 64 ppm lead and 5.3 ppm cadmium. A chip sample, taken along the length of the trench, assayed 1.9% zinc, 57 ppm lead, and 2.3 ppm cadmium.

F. CONCLUSIONS

The mineralization is confined to the brecciated limestones of probable Precambrian age (D. Norris G.S.C. personal communication). Brecciation is due to local folding and faulting. The mineralization does not extend laterally, since the cliffs on either river bank adjacent to the trench do not carry mineralization and the soil survey shows that mineralization does not extend to the south near the surface.

G. RECOMMENDATIONS

Since the mineralization does not extend laterally but assay results improve with depth, the mineralization should be tested at depth with a portable "Winkie Drill". It would not encourage the use of a heavy drill. Because the isolated nature of the area would require a large deposit of high grade mineralization, the showing does not appear promising at present.

Therefore it is recommended that a Winkie Drill core be taken to provide a low cost sample of bedrock at depth to determine the extent of the mineralization.

STATEMENT OF QUALIFICATIONS

1. I graduated with a Bachelor of Science in Geology from the professional program at the University of Alberta in April, 1971.
2. I have been employed as a geologist with various companies since graduation in 1971.
3. I have been employed as a geologist in the mineral division of Great Plains since August 1972.
4. I applied and was accepted into the Association of Professional Engineers, Geologists and Geophysicists of Alberta in 1973.
5. I have supervised and carried out the work outlined in this report.



Bill Dave Farion
P. Geol.,

NAMES AND ADDRESSES OF PERSONNEL

Janet Elizabeth Etzkorn Cook,
7169 Maureen Crescent,
BURNABY, 2,
British Columbia.

Barry William Edmonson, Student Geologist
2527 - 17th Street N.W.
CALGARY,
Alberta.

John Donald Gregory Van der Lee Geological Assistant.
8212-10th Street S.W.
CALGARY,
Alberta.

Romulo D. Santos Student Geologist
3903 - 14th Avenue N.E.
CALGARY,
Alberta.

Janet Lenore Helton Student Geologist
947 Canfield Crescent S.W.
CALGARY,
Alberta.

Colin Quinton Winter Geologist (B.A. Oxon)
'Greenways',
37 Keniworth Road,
Ealing,
LONDON, W55PA,
England.

Nigel Lumsden, Geological Assistant
c/o Great Plains Development
Company of Canada, Ltd.,
736 - 8th Avenue S.W.
CALGARY,
Alberta.

Bill Dave Farion, Party Chief
#84 210-86th Avenue S.E.
CALGARY,
Alberta.

Mike Hofuis Transwest Helicopters
Paul Koovisk Burnaby, B.C.

Sample No.	HC10 ₄ Pb ppm	HC10 ₄ Zn ppm	HC10 ₄ Cd ppm						
BF-5-6-25-14	58	49	3.6						
15	62	30	3.2						
16	57	74	3.4						
JH-5-6-21-1	79	80	2.5						
2	67	180	2.2						
3	94	310	2.5						
4	54	130	2.0						
5	52	115	1.8						
6	71	145	2.4						
7	77	185	3.2						
NL-5-6-19-1	72	59	4.0						
2	56	38	4.6						
3	63	115	3.6						
4	49	150	3.2						
5	56	78	3.2						
6	39	50	2.6						
7	57	42	3.0						
BE-5-6-21-1	56	310	2.6						
2	45	335	2.6						
3	37	77	2.2						
4	66	310	2.8						
5	45	70	1.8						
6	43	135	2.1						
7	42	115	1.7						
8	41	125	2.0						
9	50	83	1.8						
10	35	70	2.1						

KEN

Sample No.	HClO ₄ Pb ppm	HClO ₄ Zn ppm	HClO ₄ Cd ppm						
BE-5-6-21-11	52	115	2.2						
12	41	77	1.8						
13	50	61	2.0						
14	42	58	1.9						
15	56	67	1.5						
16	33	73	1.7						
JH-5-6-22-1	73	270	3.2						
2	34	66	1.7						
3	35	63	2.0						
4	82	185	2.8						
5	78	390	3.7						
BE-5-6-22-1	145	170	3.3						
2	250	235	3.2						
3	91	100	3.4						
4	95	155	3.2						
5	65	57	3.0						
6	63	65	3.0						
RS-5-6-25-1	50	22	3.6						
2	58	23	3.7						
3	51	25	3.2						
4	54	19	3.1						
5	53	47	3.4						
6	52	19	4.0						
7	58	24	3.4						
8	50	19	3.3						
9	51	18	3.0						
10	52	20	2.8						

Sample No.	HC10 ₄ Pb ppm	HC10 ₄ Zn ppm	HC10 ₄ Cd ppm							
KOE 05	67	6600	7.6							
10S	30	255	1.7							
20S	61	270	2.2							
30S	80	115	1.8							
40S	39	86	2.0							
50S	36	85	2.1							
60S	28	66	1.6							
70S	26	67	1.6							
80S	29	76	1.5							
90S	24	76	1.8							
100S	22	56	2.0							
K10E 0S	32	71	2.0							
10S	29	63	1.8							
20S	26	51	1.6							
30S	25	58	1.5							
40S	27	58	1.4							
50S	30	65	2.0							
60S	28	54	1.6							
70S	26	53	1.6							
80S	22	39	1.6							
90S	18	46	1.8							
100S	37	110	2.2							
K30E-0S	52	94	2.1							
10S	26	66	1.7							
20S	32	78	1.3							
30S	49	95	1.9							
40S	26	76	1.2							

Sample No.	HClO ₄ Pb ppm	HClO ₄ Zn ppm	HClO ₄ Cd ppm							
K30E-50S	57	125	1.6							
60S	32	74	1.8							
70S	30	82	2.2							
80S	26	60	1.6							
90S	28	78	1.4							
100S	19	44	1.0							
K50E-0S	44	94	1.9							
10S	33	80	1.6							
20S	28	64	1.5							
30S	35	88	1.2							
40S	33	65	2.2							
50S	45	93	2.4							
60S	26	76	2.0							
70S	28	75	1.6							
80S	26	68	2.2							
90S	28	52	1.4							
100S	27	48	1.5							
BE-5-5-26-1	62	130	1.8							
2	48	100	1.6							
3	57	215	2.8							
4	34	92	2.1							
5	37	94	2.0							
6	45	76	1.6							
7	34	78	2.2							
8-Organic	-	-	-							
JH-5-5-29-1	30	62	1.6							
2	85	165	2.4							

EXPENDITURES

KEN CLAIMS

1-4

FIXED WING	\$ 108.68
TRAVEL AND FREIGHT	\$ 24.20
OFFICE SUPPLIES	\$ 47.64
CAMP SUPPLIES	\$ 168.60
ASSAYING	\$ 235.95
SALARIES	\$ 878.00
HELICOPTER	\$1,414.50
	<hr/>
	\$2,873.57
	=====

Camp Supplies

	AFF	5308	1 Salaries	2 Fixed Wing	3 Travel Freight	4 Office Supplies	5 Camp Supplies	6 Helicopter	7 Kitchen	8	9	10	11	12
1	Feb 18	Energy Mines + Res	Mossico			237.00								
2	25-28	TNTA Fuel haul	35%	1463.00										
3	25-27	Shanbidge	50%		34.25									
4	Mar 14	Maps	Revenue Inv			14.00								
5	6	TNTA Fuel haul	35%	141										
6	Feb 28	TNTA		1470										
7	Mar 5	TNTA		122.85										
8	7	TNTA		245.70										
9	7	GSC				69.00								
10	Feb 20	FUEL JP4	35%				1892.27							
11	Mar 27	TNTA		290.16										
12	Apr 2	BCI 12 topolins	50%			25.65								
13	Mar 12	Energy Mines + Res. & photos	50%			31.00								
14	Mar 15	" " " 10 air photos	50%			27.00								
15	27	TNTA	35%	118.27										
16	Apr 30	NW Survey	Loganop			50.06								
17	Apr 30	Rilto					79.95							
18	May 5	Car Freightway	35%		45.57									
19	19	Air fares			399.35									
20	May 20-23	TNTA		564.20										
21	15	Caldraft	drafting supplies			31.45								
22	20	Danny	camp supplies				337.26							
23	23	Chateau	Trays		49.00									
24	23	Kenya	camp supplies				219.21							
25	" 16	Library	Inventory report			3.75								
26	26	Atlas	Copier plugger parts				258.85							
27	14	Dominion	Aluminum Tent				499.88							
28	22	Air fare	R Santos 50%		65.50									
29		CP Air	Northward freight		89.64									
30		CP Air	" "		10.00									
31	29	Yuban	explosives crimpers		8.00			5.60						
32	30	Freight			8.00			5.60						
33	30	Hooper	D. Jones, Walter			4.50								
34	30	Xessine	Whitpass				27.48							
35	June 3	Danny	camp supplies				118.27							
36				2959.89	701.31	944.01	337.77							
37								7992.91						
38				2182.14	413.11	111.00	27.11							
39														
40														

Camp Supplies

Salaries Fixed Travel Office Camp
Wage Freight Supplies Supplies

	Salaries	Fixed Wage	Travel Freight	Office Supplies	Camp Supplies	
1 May Total Forward	2959.88	201.31	9.44.01	3377.77	7982.97	
2 May 26 International Survival Supplies				71.92		
3 May 22 Yukon Explosives				137.34		
4 May 20 C.N.T.V. Radio license			7.00			
5 June 4 Turbo beaver @ 155 1/2 GP	100.75					
6 June 6 Lammys Dept Store camp supplies				443.03		
7 June 6 Northward freight		10.00				
8 May Plugger rental 1 day @ 5.00				5.00		
9 June 5 Horwoods office supply			41.85			
10 May Stirling Expediting			202.50			
11 June 14 Lammys camp supplies				605.51		
12 June 14 T.N.T.A. Otter	227.50					
13 May 22 Canadian Propane				11.79		
14 May 16 Freight		20.82				
15 May 13 Cheaney Hardware				6.91		
16 May 16 B.C.I. chronometers, hand lenses			7.95			
17 May 20 White Pass kerosene & 2 gal oil				41.62		
18 June 20 T.N.T.A. OTTER 1/2 GP 1/2 ANCOO	227.50					
19 June 20 Groceries				292.96		
20 June 15 Stirling Expediting 50%			167.28			
21 June 27 Lammys Dept Store				214.53		
22 June 14 " "				39.04		
23 June 27 Northward Ticket C. Winter		1.71				
24 May 16 B.C.I. chronometers, hand lenses						
25 June 11 Chemes - chemicals			445.61			
26 June 13 Deakin 2 mallock				22.60		
27 May 5 Hougens mallock, wire, rope				126.60		
28 June 10 B.C.I. chronometer			50.90			
29 June 20 Lammys 50%				320.99		
30 July 2 Hougens cot & blanket				38.95		
31 July 7 Fuel 5 lll @ 63	455			315.00		
32 July 7 Otter trip	455					
33 July 28 Turbo Beaver trip	351					
34 July 28 Whitepass 4 lll fuel				25.2		
35						
36						
37						
38						
39						
40						

Forwarded ✓
June 26

1145933

1310105

Barringer Assay

	1	2	3	4	5	6	7	8	9	10	11	12
Barringer Assay Samples	5310	Ken	Ber	Jeanette	Dandy	Yogo	Yuk					
May 27 9 rock							26.55					
28 2 rock		590										
28			295									
28		295										
29			1180									
29					590							
June 4/75		3570										
June 7 trench				590								
June 10							590					
10							1180					
June 26 BE soil				1760								
Ken cl soil		9680										
Jeanette JH 55-29				11								
June 1	1760											
May 31 JH				2420								
JV		4180										
BE rock	1180											
JV 6-2	1980											
JH 5-6-2 16 samples				3520								
JV 5-6 + NL 5-6-8-9			16720									
RS 5-6-9							23540					
							14740					
	5940			7700		4620						
			8800									
25 element	4200											
	5						2640					
							1770					
25 element	54									8950		
lilt	3740											
lilt	1166											
25 element	72											
	295											
June 11/75												
Totals June 19	43355	18315	29345	14740	5210	4715	5060			13910		

Barringer Assay Cost.

	1	2	3	4	5	6	7	8	9	10	11	12
	5310	5308	5308	5308	5308	5308	5308	5308	5308	5308		
		Ken	Bar	Janette	Windy	Wagi	YUK	JANE				
Totals to June 19/75	433.75	183.15	293.45	147.90	52.10	471.15	139.10					
24 soil samples June 20		52.90										
58 " " June 20							127.60					
85 " " " 22					193.60							
73 " " " 24				160.60								
		235.95	293.45	308.00	245.70	471.15	266.70					
June 26 (16, 8, 7) 31 samples	68.20											
June 29 35 samples											7.7	
June 26 15 soil samples											33	
June 29 " silt	24.20										38	
July 4											135	
July 4	143.00		22.00									
July 4	7											
July 7	70.40											
July 7 (changed from 5308 to 5310)	52.80											
" "	1.70											
July 11 27 silt	87.75											
July 11 11 + 14 "	72.50											
" " 3 rock	15.00											
	1618.90	235.95	315.45	308.00	245.70	471.15	266.70	198.00		2040.95		For claims only
July 15 13 rock	50.70											
July 16 9 rock + 116 soil			368.35									
July 11 soil + rock samples	191.10											
July 16 #30	187.60											
July 20 #31										206.50		
July 21 32											142.10	
25 33	273.10											
25 34										46.40	72.50	
25 34											20.30	
25 35											18.00	
	2321.40	235.95	683.40	308	245.70	471.15	266.70	198.00		252.90	252.90	

May Personal

	1	2	3	4	5	6	7	8	9	10	11	12
5308 Salaries as applied to Claims	5310	5309 KEN	* BEV	JENETTE	WINDY	YOGI	YUK	CLAIMS OFFICE + TRAVEL	EXP. ACCTS	Cook		
FEB 25-28 BDF	40								2560	28		
MAR SALARY BDF	40								16000			
JH Exp									27.00			
CW "									2158			
	1							40				
	2							50				
	1	40						40				
	2	120						50				
		160										
	4	200						160				
		40										
		40										
Travel	4	200						160		40	(5310)	
Mobilization		200								40	(5310)	
Slung fuel	1	160		4000						40	(5310)	
		200								40	(5310)	
	1	200		4000						40	} 5305	
	4	80		16000						40		
	4	80		16000						40	} 5305	
	6	160		16000			5000			40		
	6	40	80	16000						40	} 5305	
	6	40	80	40	12000	4000				40		
	5	80	40	16000						40	} 5305	
	5	80	40	40	5000					40		
	5	50	80	40	5000					40	} 5305	
	5	50	80	40	5000					40		
	5	50	80	40	5000					40	} 5305	
	5	50	80	40	5000					40		
	5	50	80	40	5000					40	} 5305	
	5	50	80	40	5000					40		
	5	50	80	40	5000					40	} 5305	
	5	50	80	40	5000					40		
	5	50	80	40	5000					40	} 5305	
	5	50	80	40	5000					40		
	5	50	80	40	5000					40	} 5305	
	5	50	80	40	5000					40		
	5	50	80	40	5000					40	} 5305	
	5	50	80	40	5000					40		
	5	50	80	40	5000					40	} 5305	
	5	50	80	40	5000					40		
	5	50	80	40	5000					40	} 5305	
	5	50	80	40	5000					40		
	5	50	80	40	5000					40	} 5305	
	5	50	80	40	5000					40		
	5	50	80	40	5000					40	} 5305	
	5	50	80	40	5000					40		
	5	50	80	40	5000					40	} 5305	
	5	50	80	40	5000					40		
	5	50	80	40	5000					40	} 5305	
	5	50	80	40	5000					40		
	5	50	80	40	5000					40	} 5305	
	5	50	80	40	5000					40		
	5	50	80	40	5000					40	} 5305	
	5	50	80	40	5000					40		
	5	50	80	40	5000					40	} 5305	
	5	50	80	40	5000					40		
	5	50	80	40	5000					40	} 5305	
	5	50	80	40	5000					40		
	5	50	80	40	5000					40	} 5305	
	5	50	80	40	5000					40		
	5	50	80	40	5000					40	} 5305	
	5	50	80	40	5000					40		
	5	50	80	40	5000					40	} 5305	
	5	50	80	40	5000					40		
	5	50	80	40	5000					40	} 5305	
	5	50	80	40	5000					40		
	5	50	80	40	5000					40	} 5305	
	5	50	80	40	5000					40		
	5	50	80	40	5000					40	} 5305	
	5	50	80	40	5000					40		
	5	50	80	40	5000					40	} 5305	
	5	50	80	40	5000					40		
	5	50	80	40	5000					40	} 5305	
	5	50	80	40	5000					40		
	5	50	80	40	5000					40	} 5305	
	5	50	80	40	5000					40		
	5	50	80	40	5000					40	} 5305	
	5	50	80	40	5000					40		
	5	50	80	40	5000					40	} 5305	
	5	50	80	40	5000					40		
	5	50	80	40	5000					40	} 5305	
	5	50	80	40	5000					40		
	5	50	80	40	5000					40	} 5305	
	5	50	80	40	5000					40		
	5	50	80	40	5000					40	} 5305	
	5	50	80	40	5000					40		
	5	50	80	40	5000					40	} 5305	
	5	50	80	40	5000					40		
	5	50	80	40	5000					40	} 5305	
	5	50	80	40	5000					40		
	5	50	80	40	5000					40	} 5305	
	5	50	80	40	5000					40		
	5	50	80	40	5000					40	} 5305	
	5	50	80	40	5000					40		
	5	50	80	40	5000					40	} 5305	
	5	50	80	40	5000					40		
	5	50	80	40	5000					40		

June Personal

June Personal
5308 Salaries

	1	2	3	4	5	6	7	8	9	10	11	12	
	5310	5308		BEV	JEANETTE	WINNY	YUCI	YUK	JANG	Cook 530C	Cook 5310	5310	5308

1	7	120.00			80		80.00			20	20	2800.00	2620
2	7	120.00			80		90.00			20	20	2440	2800
3			80		120		80.00			40			3120
4		46.00	240							40		2680	3400
5			200		40		40			40			3720
6		120.00			60		80			20	20	2880	3900
7				120				160		40			4220
8			40	80				160		40.00			4540
9		40		80				160		40.00		2860	4820
10				120				160		40.00			5140
11		40		80	40		120			40.00		2900	5420
12		280									4000	3220	
13		160						120		20	20	3400	5560
14		160						120		20	20	3580	5700
15		160		40			40	40		20	20	3760	5840
16		240						40			40	4040	5880
17		200						80			40	4280	5960
18		160						120			40	4480	6050
19		160	40					80		40		4640	6240
20				40	80	80	40	40		40		4880	6560
21		200					80				40	4880	6640
22		200					80				40	5160	6720
23		200			80						40	5300	6800
24		40			80				120		40	5440	7000
25		200						40			40	5680	7040
26		160							80		40	5850	7120
27		160							80		40	6050	7200
28		160							80		40	6280	7280
29		160							80		40	6480	7360
30		240									40	6560	

JULY PERSONEL AFTER JULY 16

	1	2	3	4	5	6	7	8	9	10	11	12
	5310	A BEV	SLATS	LAURA	BUM.	JANE	YUK	YOGI			5310	5308
1												
2												
3												
4												
5												
6												
7												
8												
9												
10												
11												
12												
13												
14				115.00								
15											9915	9225
16		40	80	80	80						9915	9465
17		240	40								10155	9565
18				280								9785
19		80				40	120				10235	8945
20				120	120							9185
21			120	120								9425
22		160						80			10395	9505
23		40	40			160					10555	9765
24		160				80					10595	9785
25		240									10835	
26		40			200						10875	9955
27		80									10955	10145
28		240				160					11195	
29		240									11435	
30		240									11675	
31		240									11915	
32												
33												
34												
35												
36												
37												
38												
39												
40												

Costa salary inc. done on hour after 16.

MOM + CW

June Helicopter

June Helicopter	5310	5308 Ken	Bev	Jeanette	Windy	Yogi	Yak	Jane	Totals 5310	Totals 5308	
1	230.00			149.50	149.50				Carried Forward	2699.50	3097.50
2	460			138	138						
3	184			23	23						
4	115	322									
5		391									
6	713			115	115						
7			299				230				
8	437	115					276				
9	529		115				184				
10	690		161				207				
11											
12	1495										
13	460						322				
14	483						161				
15	391										
16	1012										
17	1679						253		878	3887	
18	460						230		11577.50	6939.50	
19	529	126.50					126.50				
20									12566.50	7407.50	
21	184				207				13302.50	7624.50	
22	736				184				13647.50	7508.50	
23	345			207					14955.50	8015.50	
24	1311			115					15878.50	8496.50	
25	736						368		17304.50	8659.50	
26	1426						161		17649.50	8781.50	
27	345						322				
28	920						7				
29	920						713		18569.50	9694.50	
30	320						322		19899.50	10016.50	
31	322						644		19211.50	10660.50	
32											
33											
34											
35											
36											
37											
38											
39											
40											

add
Jan 24

July Helicopter

	1	2	3	4	5	6	7	8	9	10	12
July Helicopter.	5310	5308 Pen	Bev	Janette	Wendy	Yogi	Yuh	Jane	Stock	Total 5310	Total 5308
	101200		138							1921.50	10660.50
	760									20223	10798
	506		194							20633	
206.B from Kuni lb TNTA	319									21189	10982
206B FORESTRY TNTA	1102									21508	
206B " TNTA	1160									22610	
Add in 1.1 hrs for July 4	253									23770	
										24023	
	1979									26001	
	1426									26000	
	736		115							27427	
	1196	92								28163	11097
	1012						138			29359	11327
	529		299						322	30371	11649
										30900	11948
new sheet started July 16											

July Helicopters after July 15

	1	2	3	4	5	6	7	8	9	10	11	12
	5310	5308 Bar	llata	Lama	B.U.H	YUK	YOGI	JANE			5310	5308
1												
2												
3												
4												
5												
6												
7												
8												
9												
10												
11												
12												
13												
14												
15												
16		575		276							31475	12224
17		23	46		161						31498	12431
18					782							13213
19		276					230				31774	13443
20					598	276	200					14317
21			115		378	276						14915
22		1012			598		115				32786	15030
23		207	138			460					32993	15623
24		391									33384	
25		529				322					33913	
26						322						15950
27			138			207			644			16939
28		736	138								34649	
29		805									35954	
30		667									36121	
31		1265									37386	
32												
33												
34												
35												
36												
37												
38												
39												
40												

FLIGHT REPORT

TRANSWEST HELICOPTERS (1965) LTD.
2792 NORLAND AVE., BURNABY, B.C. V5B 3A6

04005

CHARTERER GREAT PLAINS DATE 5/23/75
ADDRESS _____ A/C CF - DNV
PILOT SIGNATURE Michael Hrus BASE MARGARET LK FUEL _____ CUST TW

OPERATION REMARKS	PASS	TAKE OFF	LAND	WT OF CARGO	HOURS	MIN.
KIWE LAKE 5310					0	4
SLING SUPPLIES FROM LAKE 5310					1	2
30 GAL FUEL USED						

TYPE OF CONTRACT 1 2A 2B AUTHORIZED BY CHARTERER REP. [Signature] HOURS FOR DAY 1.6
OTHER _____ " MONTH 5.7
" CONTRACT _____

FLIGHT REPORT

TRANSWEST HELICOPTERS (1965) LTD.
2792 NORLAND AVE., BURNABY, B.C. V5B 3A6

04006

CHARTERER GREAT PLAINS DATE 5/21/75
ADDRESS _____ A/C CF - DNV
PILOT SIGNATURE Michael Hrus BASE MARGARET LK FUEL _____ CUST TW

OPERATION REMARKS	PASS	TAKE OFF	LAND	WT OF CARGO	HOURS	MIN.
SLING FUEL FROM LAKE 5308					0	8
SUPPLIES FROM KIWE LAKE 5309					0	2
20 GAL FUEL USED						

TYPE OF CONTRACT 1 2A 2B AUTHORIZED BY CHARTERER REP. [Signature] HOURS FOR DAY 1.0
OTHER _____ " MONTH 2.2
" CONTRACT _____

FLIGHT REPORT

TRANSWEST HELICOPTERS (1965) LTD.
2792 NORLAND AVE., BURNABY, B.C. V5B 3A6

04004

CHARTERER GREAT PLAINS DATE 5/22/75
ADDRESS _____ A/C CF - DNV
PILOT SIGNATURE Michael Hrus BASE MARGARET LK FUEL _____ CUST TW

OPERATION REMARKS	PASS	TAKE OFF	LAND	WT OF CARGO	HOURS	MIN.
SLING SUPPLIES FROM LAKE 5310					1	9
38 GAL FUEL						

TYPE OF CONTRACT 1 2A 2B AUTHORIZED BY CHARTERER REP. [Signature] HOURS FOR DAY 1.9
OTHER _____ " MONTH 4.1
" CONTRACT _____

FLIGHT REPORT

TRANSWEST HELICOPTERS (1965) LTD.
2792 NORLAND AVE., BURNABY, B.C. V5B 3A6

W. Kingie f04002

CHARTERER GREAT PLAINS DATE 5/20/75
ADDRESS _____ A/C CF - DNV
PILOT SIGNATURE Michael Hrus BASE MARGARET LK FUEL _____ CUST TW

OPERATION REMARKS	PASS	TAKE OFF	LAND	WT OF CARGO	HOURS	MIN.
FERRY FLT FROM MAYO TO MARGARET LAKE 5310					1	2

TYPE OF CONTRACT 1 2A 2B AUTHORIZED BY CHARTERER REP. [Signature] HOURS FOR DAY 1.2
OTHER _____ " MONTH _____
" CONTRACT _____

FLIGHT REPORT

TRANSWEST HELICOPTERS (1965) LTD.
2792 NORLAND AVE., BURNABY, B.C. V5B 3A6

04010

CHARTERER GREAT PLAINS DATE 5/27/75
ADDRESS 736 8TH AVE SW CALGARY ALBERTA A/C CF DNV
PILOT SIGNATURE Michael Hrus BASE MARGARET LK FUEL CUST TW

OPERATION REMARKS	PASS	TAKE OFF	LAND	WT OF CARGO	HOURS	MIN.
Fly Camp, BONNET, AND RTRN 5308					1	0
BLV GROUP						
RECON YOGI 5308					1	3

TYPE OF CONTRACT 1 2A 2B AUTHORIZED BY CHARTERER REP. Bill Linton HOURS FOR DAY 2.3
OTHER: " MONTH 15.9
" CONTRACT

FLIGHT REPORT

TRANSWEST HELICOPTERS (1965) LTD.
2792 NORLAND AVE., BURNABY, B.C. V5B 3A6

04007

CHARTERER GREAT PLAINS DATE 5/25/75
ADDRESS 736 8TH AVE SW CALGARY, ALBERTA A/C CF DNV
PILOT SIGNATURE Michael Hrus BASE MARGARET LAKE FUEL CUST TW

OPERATION REMARKS	PASS	TAKE OFF	LAND	WT OF CARGO	HOURS	MIN.
Fly Camp, BONNET 5308					0	8
HARRISON CK AND RETURN 5310					1	4

TYPE OF CONTRACT 1 2A 2B AUTHORIZED BY CHARTERER REP. Bill Linton HOURS FOR DAY 2.2
OTHER: " MONTH 9.5
" CONTRACT

FLIGHT REPORT

TRANSWEST HELICOPTERS (1965) LTD.
2792 NORLAND AVE., BURNABY, B.C. V5B 3A6

04009

CHARTERER GREAT PLAINS DATE 5/26/75
ADDRESS 736 8TH AVE SW CALGARY ALBERTA A/C CF DNV
PILOT SIGNATURE Michael Hrus BASE MARGARET LK FUEL CUST TW

OPERATION REMARKS	PASS	TAKE OFF	LAND	WT OF CARGO	HOURS	MIN.
Fly Camp (BONNET) AND RTRN 5308					0	9
MAYO AND RTRN MARGARET LK 5310					2	2
SEARCH FOR AMOCO 5310					1	0

TYPE OF CONTRACT 1 2A 2B AUTHORIZED BY CHARTERER REP. Bill Linton HOURS FOR DAY 4.1
OTHER: " MONTH 13.6
" CONTRACT

FLIGHT REPORT

TRANSWEST HELICOPTERS (1965) LTD.
2792 NORLAND AVE., BURNABY, B.C. V5B 3A6

04006

CHARTERER GREAT PLAINS DATE 5/24/75
ADDRESS 736 8TH AVE SW CALGARY, ALBERTA A/C CF DNV
PILOT SIGNATURE Michael Hrus BASE MARGARET LAKE FUEL CUST TW

OPERATION REMARKS	PASS	TAKE OFF	LAND	WT OF CARGO	HOURS	MIN.
Sling Fuel from LAKE 5310					0	5
RECON SNAKE RIVER AND 5308					1	1
KING LAKE						
30 GAL FUEL						

TYPE OF CONTRACT 1 2A 2B AUTHORIZED BY CHARTERER REP. Bill Linton HOURS FOR DAY 1.6
OTHER: " MONTH 7.3
" CONTRACT

FLIGHT REPORT
 TRANSWEST HELICOPTERS (1965) LTD.
 2792 NORLAND AVE., BURNABY, B.C. V5B 3A6

04014

CHARTERER GREAT PLAINS DATE 5/31/75
 ADDRESS 736 8TH AVE SW, CALGARY ALBERTA A/C CF-DNV
 PILOT SIGNATURE Michael Hines BASE MARGARET R.R. FUEL CUST TW

OPERATION REMARKS	PASS	TAKE OFF	LAND	WT OF CARGO	HOURS	MIN.
KAPITAN PETER 5308					0	7
JEANETTE 5308					0	5
WIND RIVER 5310					0	6

TYPE OF CONTRACT 1 2A 2B
 OTHER _____
 AUTHORIZED BY CHARTERER/REP. B. L. J. J. J.
 HOURS FOR DAY 1.8
 " MONTH 24.9
 " CONTRACT _____

FLIGHT REPORT
 TRANSWEST HELICOPTERS (1965) LTD.
 2792 NORLAND AVE., BURNABY, B.C. V5B 3A6

04012

CHARTERER GREAT PLAINS DATE 5/29/75
 ADDRESS 736 8TH AVE SW, CALGARY ALBERTA A/C CF-DNV
 PILOT SIGNATURE Michael Hines BASE MARGARET R.R. FUEL CUST TW

OPERATION REMARKS	PASS	TAKE OFF	LAND	WT OF CARGO	HOURS	MIN.
FLY CAMPOS BEY, YOJI, JEANETTE, WINDY AND RAPTAN 5308						2 2

TYPE OF CONTRACT 1 2A 2B
 OTHER _____
 AUTHORIZED BY CHARTERER/REP. B. L. J. J. J.
 HOURS FOR DAY 2.2
 " MONTH 20.6
 " CONTRACT _____

FLIGHT REPORT
 TRANSWEST HELICOPTERS (1965) LTD.
 2792 NORLAND AVE., BURNABY, B.C. V5B 3A6

04013

CHARTERER GREAT PLAINS DATE 5/30/75
 ADDRESS 736 8TH AVE SW, CALGARY ALBERTA A/C CF-DNV
 PILOT SIGNATURE Michael Hines BASE MARGARET R.R. FUEL CUST TW

OPERATION REMARKS	PASS	TAKE OFF	LAND	WT OF CARGO	HOURS	MIN.
FLY CAMP, BONNET, RAY, KEN PERON					2	5

TYPE OF CONTRACT 1 2A 2B
 OTHER _____
 AUTHORIZED BY CHARTERER/REP. B. L. J. J. J.
 HOURS FOR DAY 2.5
 " MONTH 23.1
 " CONTRACT _____

FLIGHT REPORT
 TRANSWEST HELICOPTERS (1965) LTD.
 2792 NORLAND AVE., BURNABY, B.C. V5B 3A6

04011

CHARTERER GREAT PLAINS DATE 5/28/75
 ADDRESS 736 8TH AVE SW, CALGARY ALBERTA A/C CF-DNV
 PILOT SIGNATURE Michael Hines BASE MARGARET R.R. FUEL CUST TW

OPERATION REMARKS	PASS	TAKE OFF	LAND	WT OF CARGO	HOURS	MIN.
FLY CAMP, BONNET, RAY 5308					1	4
KEN 5308					1	1

TYPE OF CONTRACT 1 2A 2B
 OTHER _____
 AUTHORIZED BY CHARTERER/REP. B. L. J. J. J.
 HOURS FOR DAY 2.5
 " MONTH 18.4
 " CONTRACT _____

FLIGHT REPORT
 TRANSWEST HELICOPTERS (1965) LTD.
 2792 NORLAND AVE., BURNABY, B.C. V5B 3A6

04015

CHARTERER GREAT PLAINS DATE 6/1/75
 ADDRESS 736 8TH AVE SW CALGARY ALBERTA A/C CF - DNV
 PILOT SIGNATURE Michael Hrus BASE MARGARET RIC FUEL CUST TW

OPERATION REMARKS	PASS	TAKE OFF	LAND	WT OF CARGO	HOURS	MIN.
JEANETTE, WINDY 5308					1	3
WIND RIVER 5310					1	0

TYPE OF CONTRACT 1 2A 2B
 OTHER _____
 AUTHORIZED BY CHARTERER, REP. Bill Jarvin
 HOURS FOR DAY 2.3
 " MONTH 27.2
 " CONTRACT _____

FLIGHT REPORT
 TRANSWEST HELICOPTERS (1965) LTD.
 2792 NORLAND AVE., BURNABY, B.C. V5B 3A6

04017

CHARTERER GREAT PLAINS DATE 6/3/75
 ADDRESS 736 8TH AVE SW CALGARY ALBERTA A/C CF - DNV
 PILOT SIGNATURE Michael Hrus BASE MARGARET RIC FUEL CUST TW

OPERATION REMARKS	PASS	TAKE OFF	LAND	WT OF CARGO	HOURS	MIN.
WIND RIVER, (RTRN, WEATHER) 5310					0	3
JEANETTE, WINDY (RTRN, WEATHER) 5308					0	2
WIND RIVER (RTRN WEATHER) 5310					0	5

TYPE OF CONTRACT 1 2A 2B
 OTHER _____
 AUTHORIZED BY CHARTERER, REP. Bill Jarvin
 HOURS FOR DAY 1.0
 " MONTH 31.4
 " CONTRACT _____

FLIGHT REPORT
 TRANSWEST HELICOPTERS (1965) LTD.
 2792 NORLAND AVE., BURNABY, B.C. V5B 3A6

04016

CHARTERER GREAT PLAINS DATE 6/2/75
 ADDRESS 736 8TH AVE SW CALGARY ALBERTA A/C CF - DNV
 PILOT SIGNATURE Michael Hrus BASE MARGARET RIC FUEL CUST TW

OPERATION REMARKS	PASS	TAKE OFF	LAND	WT OF CARGO	HOURS	MIN.
WIND RIVER 5310					2	0
JEANETTE AND WINDY 5308					1	2

TYPE OF CONTRACT 1 2A 2B
 OTHER _____
 AUTHORIZED BY CHARTERER, REP. Bill Jarvin
 HOURS FOR DAY 3.2
 " MONTH 30.4
 " CONTRACT _____

FLIGHT REPORT
 TRANSWEST HELICOPTERS (1965) LTD.
 2792 NORLAND AVE., BURNABY, B.C. V5B 3A6

04018

CHARTERER GREAT PLAINS DATE 6/4/75
 ADDRESS 736 8TH AVE SW CALGARY ALBERTA A/C CF - DNV
 PILOT SIGNATURE Michael Hrus BASE MARGARET RIC FUEL CUST TW

OPERATION REMARKS	PASS	TAKE OFF	LAND	WT OF CARGO	HOURS	MIN.
KEN CLAIMS 5308					1	4
SLING BARRELS FROM OLD 5310 CAMP SITE					0	5

TYPE OF CONTRACT 1 2A 2B
 OTHER _____
 AUTHORIZED BY CHARTERER, REP. Bill Jarvin
 HOURS FOR DAY 1.9
 " MONTH 33.3
 " CONTRACT _____

FLIGHT REPORT
 TRANSWEST HELICOPTERS (1965) LTD.
 2792 NORLAND AVE., BURNABY, B.C. V5B 3A6

04024

CHARTERER GREAT PLAINS DATE 6/8/75
 ADDRESS 736 8TH AVE SW CALGARY, ALBERTA A/C CF - DNV
 PILOT SIGNATURE Michael Klein BASE MARGARET R/C FUEL CUST TW

OPERATION REMARKS	PASS	TAKE OFF	LAND	WT OF CARGO	HOURS	MIN.
BEV PLAINS 5308					0	8
KEN CLAIMS 5308					0	5
BEV CLAIMS 5308					0	4
WIND RIVER 5310					1	9

TYPE OF CONTRACT 1 2A 2B
 OTHER _____
 AUTHORIZED BY CHARTERER REP. [Signature]
 HOURS FOR DAY 3.6
 " MONTH 45.0
 " CONTRACT _____

FLIGHT REPORT
 TRANSWEST HELICOPTERS (1965) LTD.
 2792 NORLAND AVE., BURNABY, B.C. V5B 3A6

04023

CHARTERER GREAT PLAINS DATE 6/5/75
 ADDRESS 736 8TH AVE SW CALGARY, ALBERTA A/C CF - DNV
 PILOT SIGNATURE Michael Klein BASE MARGARET R/C FUEL CUST TW

OPERATION REMARKS	PASS	TAKE OFF	LAND	WT OF CARGO	HOURS	MIN.
KEN CLAIMS 5308					1	7

TYPE OF CONTRACT 1 2A 2B
 OTHER _____
 AUTHORIZED BY CHARTERER REP. [Signature]
 HOURS FOR DAY 1.7
 " MONTH 35.0
 " CONTRACT _____

FLIGHT REPORT
 TRANSWEST HELICOPTERS (1965) LTD.
 2792 NORLAND AVE., BURNABY, B.C. V5B 3A6

04023

CHARTERER GREAT PLAINS DATE 6/7/75
 ADDRESS 736 8TH AVE SW CALGARY, ALBERTA A/C CF - DNV
 PILOT SIGNATURE Michael Klein BASE MARGARET R/C FUEL CUST TW

OPERATION REMARKS	PASS	TAKE OFF	LAND	WT OF CARGO	HOURS	MIN.
Yogi CLAIM 5308					1	0
BEV CLAIM 5308					1	3

TYPE OF CONTRACT 1 2A 2B
 OTHER _____
 AUTHORIZED BY CHARTERER REP. [Signature]
 HOURS FOR DAY 2.3
 " MONTH 41.4
 " CONTRACT _____

FLIGHT REPORT
 TRANSWEST HELICOPTERS (1965) LTD.
 2792 NORLAND AVE., BURNABY, B.C. V5B 3A6

04022

CHARTERER GREAT PLAINS DATE 6/6/75
 ADDRESS 736 8TH AVE SW CALGARY, ALBERTA A/C CF - DNV
 PILOT SIGNATURE Michael Klein BASE MARGARET R/C FUEL CUST TW

OPERATION REMARKS	PASS	TAKE OFF	LAND	WT OF CARGO	HOURS	MIN.
JEANETTE & WINDY 5308					1	0
WIND RIVER 5310					1	6
SNAKE RIVER 5310					1	5

TYPE OF CONTRACT 1 2A 2B
 OTHER _____
 AUTHORIZED BY CHARTERER REP. [Signature]
 HOURS FOR DAY 4.1
 " MONTH 39.1
 " CONTRACT _____

FLIGHT REPORT
TRANSWEST HELICOPTERS (1965) LTD.
 2792 NORLAND AVE., BURNABY, B.C. V5B 3A6

04031

CHARTERER GREAT PLAINS DATE 6/13/75
 ADDRESS 736 8TH AVE SW CALGARY ALBERTA A/C CF - DNV
 PILOT SIGNATURE Michael How BASE MARGARET LK FUEL CUST TW

OPERATION REMARKS	PASS	TAKE OFF	LAND	WT OF CARGO	HOURS	MIN.
KEN CLAIMS 5308 5310 RECON					0	8
YUK CLAIMS 5308					1	4
SIKAS CK 5310					1	2
TYPE OF CONTRACT 1 <input type="checkbox"/> 2A <input type="checkbox"/> 2B <input type="checkbox"/> OTHER _____						
AUTHORIZED BY CHARTERER REP. <i>Bill Janion</i>		HOURS FOR DAY <u>3.4</u> " MONTH <u>64.1</u> " CONTRACT _____				

FLIGHT REPORT
TRANSWEST HELICOPTERS (1965) LTD.
 2792 NORLAND AVE., BURNABY, B.C. V5B 3A6

04026

CHARTERER GREAT PLAINS DATE 6/10/75
 ADDRESS 736 8TH AVE SW CALGARY ALBERTA A/C CF - DNV
 PILOT SIGNATURE Michael How BASE MARGARET LK FUEL CUST TW

OPERATION REMARKS	PASS	TAKE OFF	LAND	WT OF CARGO	HOURS	MIN.
Yogi Yogi CLAIMS 5308					0	9
BEV CLAIMS 5308					0	7
HARRISON CK 5310					2	4
FLUNK CK 5310					0	6
TYPE OF CONTRACT 1 <input type="checkbox"/> 2A <input type="checkbox"/> 2B <input type="checkbox"/> OTHER _____						
AUTHORIZED BY CHARTERER REP. <i>Bill Janion</i>		HOURS FOR DAY <u>4.6</u> " MONTH <u>53.2</u> " CONTRACT _____				

FLIGHT REPORT
TRANSWEST HELICOPTERS (1965) LTD.
 2792 NORLAND AVE., BURNABY, B.C. V5B 3A6

04028

CHARTERER GREAT PLAINS DATE 6/12/75
 ADDRESS 736 8TH AVE SW CALGARY ALBERTA A/C CF - DNV
 PILOT SIGNATURE Michael How BASE MARGARET LK FUEL CUST TW

OPERATION REMARKS	PASS	TAKE OFF	LAND	WT OF CARGO	HOURS	MIN.
TERRY FROM DAWSON TO MAYO 5310					1	2
TERRY FROM MAYO TO MARGARET LK 5310					1	3
STAKE SLATS CK 5310					4	0
TYPE OF CONTRACT 1 <input type="checkbox"/> 2A <input type="checkbox"/> 2B <input type="checkbox"/> OTHER _____						
AUTHORIZED BY CHARTERER REP. <i>Bill Janion</i>		HOURS FOR DAY <u>6.5</u> " MONTH <u>59.7</u> " CONTRACT _____				

FLIGHT REPORT
TRANSWEST HELICOPTERS (1965) LTD.
 2792 NORLAND AVE., BURNABY, B.C. V5B 3A6

04025

CHARTERER GREAT PLAINS DATE 6/9/75
 ADDRESS 736 8TH AVE SW CALGARY ALBERTA A/C CF - DNV
 PILOT SIGNATURE Michael How BASE MARGARET LK FUEL CUST TW

OPERATION REMARKS	PASS	TAKE OFF	LAND	WT OF CARGO	HOURS	MIN.
Yogi CLAIMS 5308					0	8
BEV CLAIMS 5308					0	5
WIND RIVER 5310					2	1
KIWC LAKE 5310					0	2
TYPE OF CONTRACT 1 <input type="checkbox"/> 2A <input type="checkbox"/> 2B <input type="checkbox"/> OTHER _____						
AUTHORIZED BY CHARTERER REP. <i>Bill Janion</i>		HOURS FOR DAY <u>3.6</u> " MONTH <u>48.6</u> " CONTRACT _____				

FLIGHT REPORT
TRANSWEST HELICOPTERS (1965) LTD.
 2792 NORLAND AVE., BURNABY, B.C. V5B 3A6

04035

CHARTERER GREAT PLAINS DATE 6/17/75
 ADDRESS 736 8TH AVE SW CALGARY, ALBERTA A/C CF-DNV
 PILOT SIGNATURE Michael Hrus BASE MARGARET LK FUEL CUST TW

OPERATION REMARKS	PASS	TAKE OFF	LAND	WT OF CARGO	HOURS	MIN.
YUK PLAINS (5308)					1	1
WIND RIVER, SLAKS CK RECON (5310)					2	2
BEAR RIVER RECON (5310)					1	6
SLING FUEL TO HARRISON CK RTEN (5310) MARGARET LK					1	4
LITTLE WIND (5310)					2	1

TYPE OF CONTRACT 1 2A 2B
 OTHER _____

AUTHORIZED BY CHARTERER REP. B. L. Laroie

HOURS FOR DAY 7.4
 " MONTH 80.4
 " CONTRACT 80.4

FLIGHT REPORT
TRANSWEST HELICOPTERS (1965) LTD.
 2792 NORLAND AVE., BURNABY, B.C. V5B 3A6

04033

CHARTERER GREAT PLAINS DATE 6/15/75
 ADDRESS 736 8TH AVE SW CALGARY, ALBERTA A/C CF-DNV
 PILOT SIGNATURE Michael Hrus BASE MARGARET LK FUEL CUST TW

OPERATION REMARKS	PASS	TAKE OFF	LAND	WT OF CARGO	HOURS	MIN.
SLATS CK (5310)					1	0
SLING LUMBER FOR DOCK (5310)					0	7

TYPE OF CONTRACT 1 2A 2B
 OTHER _____

AUTHORIZED BY CHARTERER REP. B. L. Laroie

HOURS FOR DAY 1.7
 " MONTH 68.6
 " CONTRACT _____

FLIGHT REPORT
TRANSWEST HELICOPTERS (1965) LTD.
 2792 NORLAND AVE., BURNABY, B.C. V5B 3A6

04034

CHARTERER GREAT PLAINS DATE 6/16/75
 ADDRESS 736 8TH AVE SW CALGARY, ALBERTA A/C CF-DNV
 PILOT SIGNATURE Michael Hrus BASE MARGARET LK FUEL CUST TW

OPERATION REMARKS	PASS	TAKE OFF	LAND	WT OF CARGO	HOURS	MIN.
LITTLE WIND #9 (5310)					1	8
MAYO RTEN MARGARET LK (5310)					2	6

TYPE OF CONTRACT 1 2A 2B
 OTHER _____

AUTHORIZED BY CHARTERER REP. B. L. Laroie

HOURS FOR DAY 4.4
 " MONTH 13.0
 " CONTRACT _____

FLIGHT REPORT
TRANSWEST HELICOPTERS (1965) LTD.
 2792 NORLAND AVE., BURNABY, B.C. V5B 3A6

04032

CHARTERER GREAT PLAINS DATE 6/12/75
 ADDRESS 736 8TH AVE SW CALGARY, ALBERTA A/C CF-DNV
 PILOT SIGNATURE Michael Hrus BASE MARGARET LK FUEL CUST TW

OPERATION REMARKS	PASS	TAKE OFF	LAND	WT OF CARGO	HOURS	MIN.
KEN CLAIMS RECON (5310)					0	6
YUK CLAIMS (5308)					0	7
SLAKS CK (5310)					1	5

TYPE OF CONTRACT 1 2A 2B
 OTHER _____

AUTHORIZED BY CHARTERER REP. B. L. Laroie

HOURS FOR DAY 2.8
 " MONTH 66.9
 " CONTRACT _____

FLIGHT REPORT

TRANSWEST HELICOPTERS (1965) LTD.
2792 NORLAND AVE., BURNABY, B.C. V5B 3A6

04040

CHARTERER GREAT PLAINS DATE 6/20/75
 ADDRESS 736 8TH AVE SW CALGARY ALBERTA A/C CF - BOH
 PILOT SIGNATURE Michael Hawn BASE MARGARET LC FUEL CUST TW

OPERATION REMARKS	PASS	TAKE OFF	LAND	WT OF CARGO	HOURS	MIN.
WINDY CLAIMS (5308)					0	9
KINDRR CL (5310)					0	9
WIND RUGIE RECON (5310)					2	3
FLT REPORT #04039 MISSING BECAUSE OF ERROR						
TYPE OF CONTRACT 1 <input type="checkbox"/> 2A <input type="checkbox"/> 2B <input type="checkbox"/>		AUTHORIZED BY CHARTERER REP. <u>Bill Jarvis</u>		HOURS FOR DAY <u>4.1</u>		
OTHER				" MONTH <u>7.5</u>		
				" CONTRACT <u>94.3</u>		

FLIGHT REPORT

TRANSWEST HELICOPTERS (1965) LTD.
2792 NORLAND AVE., BURNABY, B.C. V5B 3A6

04037

CHARTERER GREAT PLAINS DATE 6/19/75
 ADDRESS 736 8TH AVE SW CALGARY ALBERTA A/C CF - DNU
 PILOT SIGNATURE Michael Hawn BASE MARGARET LC FUEL CUST TW

OPERATION REMARKS	PASS	TAKE OFF	LAND	WT OF CARGO	HOURS	MIN.
KEN AND YUK CLAIMS (5308)					1	1
LITTLE WIND RUGIE (5310)					2	3
TYPE OF CONTRACT 1 <input type="checkbox"/> 2A <input type="checkbox"/> 2B <input type="checkbox"/>						
OTHER		AUTHORIZED BY CHARTERER REP. <u>Bill Jarvis</u>		HOURS FOR DAY <u>3.4</u>		
				" MONTH <u>3.4</u>		
				" CONTRACT <u>36.8</u>		

FLIGHT REPORT

TRANSWEST HELICOPTERS (1965) LTD.
2792 NORLAND AVE., BURNABY, B.C. V5B 3A6

04041

CHARTERER GREAT PLAINS DATE 6/20/75
 ADDRESS 736 8TH AVE SW CALGARY ALBERTA A/C CF - BOH
 PILOT SIGNATURE Michael Hawn BASE MARGARET LC FUEL CUST TW

OPERATION REMARKS	PASS	TAKE OFF	LAND	WT OF CARGO	HOURS	MIN.
MARGARET LC TO HARRISON CK 5310					0	8
SHING SUPPLIES FROM PORTER 5309					0	8
PODDIE TO HARRISON CK						
TYPE OF CONTRACT 1 <input type="checkbox"/> 2A <input type="checkbox"/> 2B <input type="checkbox"/>						
OTHER		AUTHORIZED BY CHARTERER REP. <u>Bill Jarvis</u>		HOURS FOR DAY <u>1.6</u>		
				" MONTH <u>9.1</u>		
				" CONTRACT <u>95.9</u>		

FLIGHT REPORT

TRANSWEST HELICOPTERS (1965) LTD.
2792 NORLAND AVE., BURNABY, B.C. V5B 3A6

04036

CHARTERER GREAT PLAINS DATE 6/18/75
 ADDRESS 736 8TH AVE SW CALGARY ALBERTA A/C CF - DNU
 PILOT SIGNATURE Michael Hawn BASE MARGARET LC FUEL CUST TW

OPERATION REMARKS	PASS	TAKE OFF	LAND	WT OF CARGO	HOURS	MIN.
YUK CLAIMS (5308)					1	0
LITTLE WIND #5 (5310)					2	0
TYPE OF CONTRACT 1 <input type="checkbox"/> 2A <input type="checkbox"/> 2B <input type="checkbox"/>						
OTHER		AUTHORIZED BY CHARTERER REP. <u>Bill Jarvis</u>		HOURS FOR DAY <u>3.0</u>		
				" MONTH <u>23.4</u>		
				" CONTRACT <u>83.4</u>		

FLIGHT REPORT
TRANSWEST HELICOPTERS (1965) LTD.
 2792 NORLAND AVE., BURNABY, B.C. V5B 3A6

04046

CHARTERER GREAT PLAINS DATE 6/24/75
 ADDRESS 736 8TH AVE SW CALGARY ALBERTA A/C CF - BUH
 PILOT SIGNATURE Michael Hill BASE MARGARET RIVER FUEL CUST TW

OPERATION REMARKS	PASS	TAKE OFF	LAND	WT OF CARGO	HOURS	MIN.
JEANETTE CLAIMS (5308)					0	5
LITTLE WIND #9 (5310)					2	0
JANE PLAINS (5308)					1	6
HART RIVER RECON (5310)					1	2

TYPE OF CONTRACT 1 2A 2B
 OTHER: _____
 AUTHORIZED BY CHARTERER, REP. Bill Larion
 HOURS FOR DAY 5.3
 " MONTH 23.3
 " CONTRACT 110.1

FLIGHT REPORT
TRANSWEST HELICOPTERS (1965) LTD.
 2792 NORLAND AVE., BURNABY, B.C. V5B 3A6

04045

CHARTERER GREAT PLAINS DATE 6/23/75
 ADDRESS 736 8TH AVE SW CALGARY ALBERTA A/C CF - BUH
 PILOT SIGNATURE Michael Hill BASE MARGARET RIVER FUEL CUST TW

OPERATION REMARKS	PASS	TAKE OFF	LAND	WT OF CARGO	HOURS	MIN.
JEANETTE CLAIMS (5308)					0	9
LITTLE WIND #5 (5310)					2	4
SLATS CR (5310)					0	7
MARGARET TO MAYO 5310					1	5
MAYO TO JEANETTE 5310					1	1

TYPE OF CONTRACT 1 2A 2B
 OTHER: _____
 AUTHORIZED BY CHARTERER, REP. Bill Larion
 HOURS FOR DAY 6.6
 " MONTH 18.0
 " CONTRACT 104.8

FLIGHT REPORT
TRANSWEST HELICOPTERS (1965) LTD.
 2792 NORLAND AVE., BURNABY, B.C. V5B 3A6

04043

CHARTERER GREAT PLAINS DATE 6/22/75
 ADDRESS 736 8TH AVE SW CALGARY ALBERTA A/C CF - BUH
 PILOT SIGNATURE Michael Hill BASE MARGARET RIVER FUEL CUST TW

OPERATION REMARKS	PASS	TAKE OFF	LAND	WT OF CARGO	HOURS	MIN.
WINDY CLAIMS (5308)					0	8
WIND RIVER #1 & 2 RECON (5310)					1	5

TYPE OF CONTRACT 1 2A 2B
 OTHER: _____
 AUTHORIZED BY CHARTERER, REP. Bill Larion
 HOURS FOR DAY 2.3
 " MONTH 11.4
 " CONTRACT 98.2

FLIGHT REPORT

TRANSWEST HELICOPTERS (1965) LTD.
2792 NORLAND AVE., BURNABY, B.C. V5B 3A8

04071

CHARTERER GREAT PLAINS DATE 7/17/75
ADDRESS 736 8TH AVE SW CALGARY ALBERTA A/C CF-BUH
PILOT SIGNATURE Michael Hill BASE MARGARET LK FUEL CUST TW

OPERATION REMARKS	PASS	TAKE OFF	LAND	WT OF CARGO	HOURS	MIN.
WEATHER CHECK (5310)					0	1
BEV (5308)					0	2
Laura (5310)					0	7

TYPE OF CONTRACT 1 2A 2B AUTHORIZED BY CHARTERER REP. Bilt Janson HOURS FOR DAY 1.0
OTHER _____ " MONTH 102.4
" CONTRACT 189.2

FLIGHT REPORT

TRANSWEST HELICOPTERS (1965) LTD.
2792 NORLAND AVE., BURNABY, B.C. V5B 3A8

04074

CHARTERER GREAT PLAINS DATE 7/19/75
ADDRESS 736 8TH AVE S.W. CALGARY ALBERTA A/C CF-BUH
PILOT SIGNATURE Michael Hill BASE MARGARET LK FUEL CUST TW

OPERATION REMARKS	PASS	TAKE OFF	LAND	WT OF CARGO	HOURS	MIN.
Laura claims (5310)					0	8
SLING FUEL					0	4
YUK CLAIMS (5308)					1	0

TYPE OF CONTRACT 1 2A 2B AUTHORIZED BY CHARTERER REP. Bilt Janson HOURS FOR DAY 2.2
OTHER _____ " MONTH 2.2
" CONTRACT 194.8

FLIGHT REPORT

TRANSWEST HELICOPTERS (1965) LTD.
2792 NORLAND AVE., BURNABY, B.C. V5B 3A8

04070

CHARTERER GREAT PLAINS DATE 7/16/75
ADDRESS 736 8TH AVE SW CALGARY ALBERTA A/C CF-BUH
PILOT SIGNATURE Michael Hill BASE MARGARET LK FUEL CUST TW

OPERATION REMARKS	PASS	TAKE OFF	LAND	WT OF CARGO	HOURS	MIN.
SLATS CK (5310)					1	2
Maxo - Margaret Lk (5310)					2	5

TYPE OF CONTRACT 1 2A 2B AUTHORIZED BY CHARTERER REP. Bilt Janson HOURS FOR DAY 3.7
OTHER _____ " MONTH 101.4
" CONTRACT 188.2

FLIGHT REPORT

TRANSWEST HELICOPTERS (1965) LTD.
2792 NORLAND AVE., BURNABY, B.C. V5B 3A8

04072

CHARTERER GREAT PLAINS DATE 7/18/75
ADDRESS 736 8TH AVE S.W. CALGARY ALBERTA A/C CF-BUH
PILOT SIGNATURE Michael Hill BASE MARGARET LK FUEL CUST TW

OPERATION REMARKS	PASS	TAKE OFF	LAND	WT OF CARGO	HOURS	MIN.
Laura 4 TRIPS (5310)					3	4

TYPE OF CONTRACT 1 2A 2B AUTHORIZED BY CHARTERER REP. Bilt Janson HOURS FOR DAY 3.4
OTHER _____ " MONTH 105.8
" CONTRACT 192.6

FLIGHT REPORT

TRANSWEST HELICOPTERS (1965) LTD.
2792 NORLAND AVE., BURNABY, B.C. V5B 3A6

04079

CHARTERER GREAT PLAINS DATE 7/23/75
 ADDRESS 736 8TH AVE SW CALGARY ALBERTA A/C CF-BUH
 PILOT SIGNATURE Michael Hrus BASE MARGARET LK FUEL CUST TW

OPERATION REMARKS	PASS	TAKE OFF	LAND	WT OF CARGO	HOURS	MIN.
KIWI LAKE (5310)					0	9
BUH claims (5308)					2	0
REV " (5308)					0	6

TYPE OF CONTRACT 1 2A 2B
 OTHER _____
 AUTHORIZED BY CHARTERER REP. Bill Taron
 HOURS FOR DAY 3.5
 " MONTH 17.5
 " CONTRACT 210.1

FLIGHT REPORT

TRANSWEST HELICOPTERS (1965) LTD.
2792 NORLAND AVE., BURNABY, B.C. V5B 3A6

04077

CHARTERER GREAT PLAINS DATE 7/21/75
 ADDRESS 736 8TH AVE SW CALGARY ALBERTA A/C CF-BUH
 PILOT SIGNATURE Michael Hrus BASE MARGARET LK FUEL CUST TW

OPERATION REMARKS	PASS	TAKE OFF	LAND	WT OF CARGO	HOURS	MIN.
Laura claims (5308)					2	6
REV claims (5308)					0	35

TYPE OF CONTRACT 1 2A 2B
 OTHER _____
 AUTHORIZED BY CHARTERER REP. Bill Taron
 HOURS FOR DAY 3.1
 " MONTH 9.1
 " CONTRACT 20.87

FLIGHT REPORT

TRANSWEST HELICOPTERS (1965) LTD.
2792 NORLAND AVE., BURNABY, B.C. V5B 3A6

04078

CHARTERER GREAT PLAINS DATE 7/22/75
 ADDRESS 736 8TH AVE SW CALGARY ALBERTA A/C CF-BUH
 PILOT SIGNATURE Michael Hrus BASE MARGARET LK FUEL CUST TW

OPERATION REMARKS	PASS	TAKE OFF	LAND	WT OF CARGO	HOURS	MIN.
XOGI. CLAIMS (5308)					0	5
WIND RIVER #11 (5310)					1	1
OGILVIE RIVER RECON (5310)					3	3

TYPE OF CONTRACT 1 2A 2B
 OTHER _____
 AUTHORIZED BY CHARTERER REP. Bill Taron
 HOURS FOR DAY 4.9
 " MONTH 14.0
 " CONTRACT 206.6

FLIGHT REPORT

TRANSWEST HELICOPTERS (1965) LTD.
2792 NORLAND AVE., BURNABY, B.C. V5B 3A6

04076

CHARTERER GREAT PLAINS DATE 7/20/75
 ADDRESS 736 8TH AVE SW CALGARY ALBERTA A/C CF-BUH
 PILOT SIGNATURE Michael Hrus BASE MARGARET LK FUEL CUST TW

OPERATION REMARKS	PASS	TAKE OFF	LAND	WT OF CARGO	HOURS	MIN.
Laura AND BUH claims (5308)					1	1
BUH claims (5308)					0	5
Laura " (5308)					0	3
BUH " (5308)					0	7
BUH AND Laura (5308)					1	2

TYPE OF CONTRACT 1 2A 2B
 OTHER _____
 AUTHORIZED BY CHARTERER REP. Bill Taron
 HOURS FOR DAY 3.8
 " MONTH 6.0
 " CONTRACT 198.6

FLIGHT REPORT
TRANSWEST HELICOPTERS (1965) LTD.
 2792 NORLAND AVE., BURNABY, B.C. V5B 3A6

04083

CHARTERER GREAT PLAINS DATE 7/26/75
 ADDRESS 736 8TH AVE SW Calgary ALBERTA A/C CF - BUL
 PILOT SIGNATURE Michael Hines BASE MARGARET Rk FUEL CUST TW

OPERATION REMARKS	PASS	TAKE OFF	LAND	WT OF CARGO	HOURS	MIN.
Laura and BUL CLAIMS (5308)					1	4

TYPE OF CONTRACT 1 2A 2B
 OTHER _____ AUTHORIZED BY CHARTERER REP. Bil Larion
 HOURS FOR DAY 1.4
 " MONTH 22.9
 " CONTRACT 215.5

FLIGHT REPORT
TRANSWEST HELICOPTERS (1965) LTD.
 2792 NORLAND AVE., BURNABY, B.C. V5B 3A6

04080

CHARTERER GREAT PLAINS DATE 7/24/75
 ADDRESS 736 8TH AVE SW Calgary ALBERTA A/C CF - BUL
 PILOT SIGNATURE Michael Hines BASE MARGARET Rk FUEL CUST TW

OPERATION REMARKS	PASS	TAKE OFF	LAND	WT OF CARGO	HOURS	MIN.
KEN CLAIM (5310)					0	5
KEN (5310)					0	7
KEN (5310)					0	5

TYPE OF CONTRACT 1 2A 2B
 OTHER _____ AUTHORIZED BY CHARTERER REP. Bil Larion
 HOURS FOR DAY 1.9
 " MONTH 19.2
 " CONTRACT 211.8

FLIGHT REPORT
TRANSWEST HELICOPTERS (1965) LTD.
 2792 NORLAND AVE., BURNABY, B.C. V5B 3A6

04084

CHARTERER GREAT PLAINS DATE 7/27/75
 ADDRESS 736 8TH AVE SW Calgary ALBERTA A/C CF - BUL
 PILOT SIGNATURE Michael Hines BASE MARGARET Rk FUEL CUST TW

OPERATION REMARKS	PASS	TAKE OFF	LAND	WT OF CARGO	HOURS	MIN.
JANE CLAIMS (5308)					2	8
REV " (5308)					0	6
BUL " (5308)					0	9

TYPE OF CONTRACT 1 2A 2B
 OTHER _____ AUTHORIZED BY CHARTERER REP. Bil Larion
 HOURS FOR DAY 4.3
 " MONTH 27.2
 " CONTRACT 219.8

FLIGHT REPORT
TRANSWEST HELICOPTERS (1965) LTD.
 2792 NORLAND AVE., BURNABY, B.C. V5B 3A6

04081

CHARTERER GREAT PLAINS DATE 7/25/75
 ADDRESS 736 8TH AVE SW Calgary ALBERTA A/C CF - BUL
 PILOT SIGNATURE Michael Hines BASE MARGARET Rk FUEL CUST TW

OPERATION REMARKS	PASS	TAKE OFF	LAND	WT OF CARGO	HOURS	MIN.
MARGARET Rk TO Mayo (5310)					1	2
Mayo To Margaret Rk (5310)					1	1

TYPE OF CONTRACT 1 2A 2B
 OTHER _____ AUTHORIZED BY CHARTERER REP. Bil Larion
 HOURS FOR DAY 2.3
 " MONTH 21.5
 " CONTRACT 214.1

FLIGHT REPORT

TRANSWEST HELICOPTERS (1965) LTD.

2792 NORLAND AVE., BURNABY, B.C. V5B 3A6

04090

CHARTERER GREAT PLAINS DATE 7/31/75
 ADDRESS 736 8TH AVE SW CALGARY ALBERTA A/C CF - BUL
 PILOT SIGNATURE Michael Hiron BASE MARGARET BC FUEL CUST TW

OPERATION REMARKS	PASS	TAKE OFF	LAND	WT OF CARGO	HOURS	MIN.
OGILVIE RIVER (5310)					5	5

TYPE OF CONTRACT 1 2A 2B AUTHORIZED BY CHARTERER, REP. [Signature] HOURS FOR DAY 5.5
 OTHER _____ " MONTH 42.3
 " CONTRACT 234.9

FLIGHT REPORT

TRANSWEST HELICOPTERS (1965) LTD.

2792 NORLAND AVE., BURNABY, B.C. V5B 3A6

04087

CHARTERER GREAT PLAINS DATE 7/29/75
 ADDRESS 736 8TH AVE SW CALGARY ALBERTA A/C CF - BUL
 PILOT SIGNATURE Michael Hiron BASE MARGARET BC FUEL CUST TW

OPERATION REMARKS	PASS	TAKE OFF	LAND	WT OF CARGO	HOURS	MIN.
SNAKE RIVER RECON (5310)					3	4
SLING CABLE FROM LAKE (5310)					0	1

TYPE OF CONTRACT 1 2A 2B AUTHORIZED BY CHARTERER, REP. [Signature] HOURS FOR DAY 3.5
 OTHER _____ " MONTH 33.9
 " CONTRACT 226.5

FLIGHT REPORT

TRANSWEST HELICOPTERS (1965) LTD.

2792 NORLAND AVE., BURNABY, B.C. V5B 3A6

04089

CHARTERER GREAT PLAINS DATE 7/30/75
 ADDRESS 736 8TH AVE SW CALGARY ALBERTA A/C CF - BUL
 PILOT SIGNATURE Michael Hiron BASE MARGARET BC FUEL CUST TW

OPERATION REMARKS	PASS	TAKE OFF	LAND	WT OF CARGO	HOURS	MIN.
OGILVIE RIVER (5310)					2	9

TYPE OF CONTRACT 1 2A 2B AUTHORIZED BY CHARTERER, REP. [Signature] HOURS FOR DAY 2.9
 OTHER _____ " MONTH 36.8
 " CONTRACT 229.4

FLIGHT REPORT

TRANSWEST HELICOPTERS (1965) LTD.

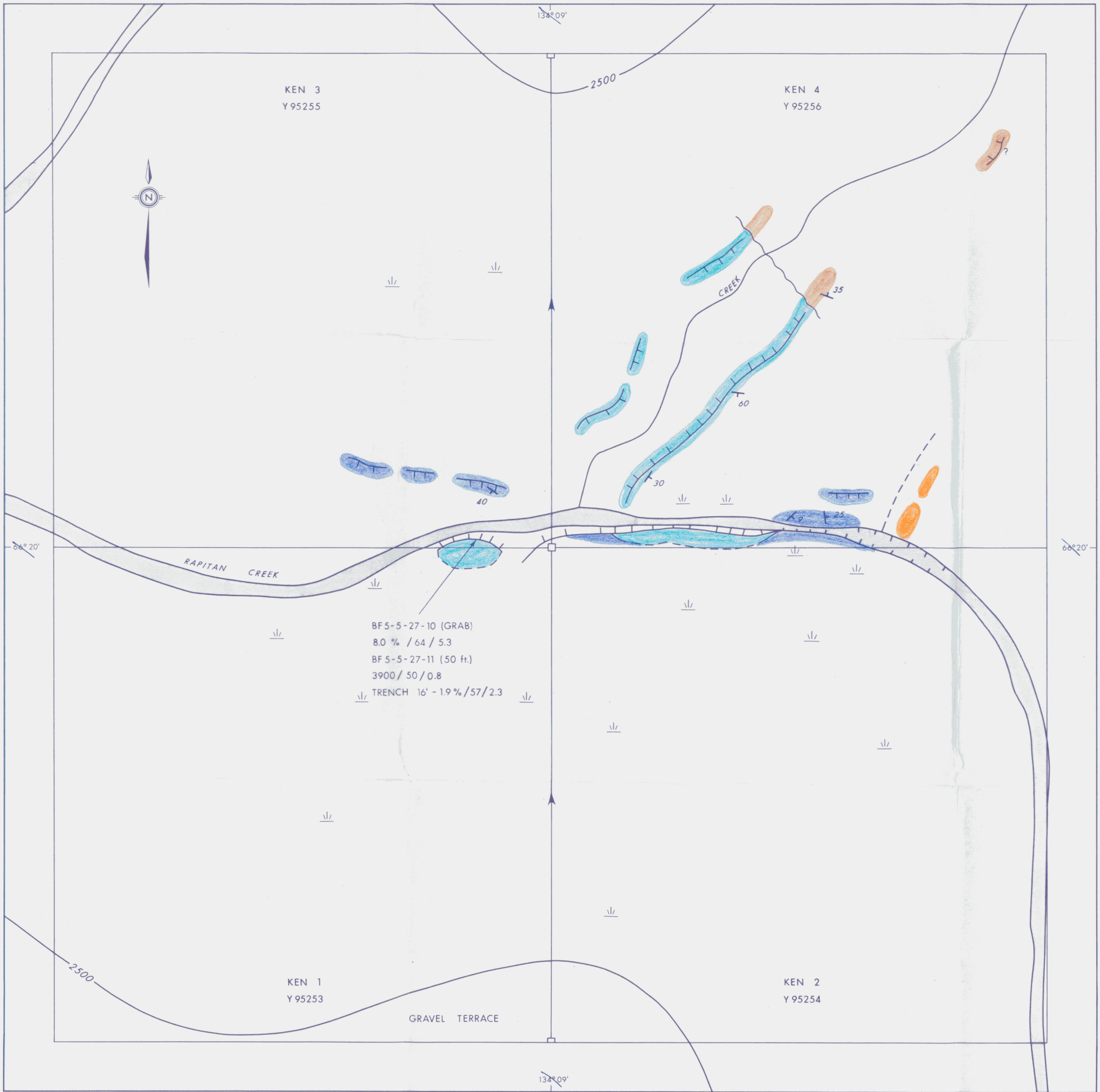
2792 NORLAND AVE., BURNABY, B.C. V5B 3A6

04088

CHARTERER GREAT PLAINS DATE 7/28/75
 ADDRESS 736 8TH AVE SW CALGARY ALBERTA A/C CF - BUL
 PILOT SIGNATURE Michael Hiron BASE MARGARET BC FUEL CUST TW

OPERATION REMARKS	PASS	TAKE OFF	LAND	WT OF CARGO	HOURS	MIN.
SNAKE RIVER RECON (5310)					3	2

TYPE OF CONTRACT 1 2A 2B AUTHORIZED BY CHARTERER, REP. [Signature] HOURS FOR DAY 3.2
 OTHER _____ " MONTH 30.4
 " CONTRACT 223.0



LEGEND

- UNIT 1a: Limestone, Largely Brecciated, Interbeds of Shaley Limestone With Thin Bedded Limestone
- 1b: Limestone, Largely Unbrecciated
- UNIT 2: Flaggy Carbonates
- UNIT 3: Argillite
- CLIFFS
- COVERED
- GEOLOGICAL CONTACT; Defined, Approximate
- FAULT
- BEDDING

PLATE 2



DEVELOPMENT COMPANY
OF CANADA, LTD.

MACKENZIE PROJECT

RAPITAN CREEK
KEN CLAIMS
GEOLOGY



N.T.S. : 106-F-4
JUNE 1975

B. FARION



PLATE 3



DEVELOPMENT COMPANY
OF CANADA, LTD.

MACKENZIE PROJECT

RAPITAN CREEK

KEN CLAIMS
Zn, Pb, Cd ppm GEOCHEMISTRY



N.T.S. : 106 - F - 4
JUNE 1975

B. FARION