



GREAT PLAINS DEVELOPMENT COMPANY OF CANADA, LTD.,

GEOLOGICAL AND GEOCHEMICAL
EVALUATION OF THE YUK CLAIMS
YUKON TERRITORY

65° 05' North Latitude
133° 55' West Longitude

May 23 - June 26, 1975.

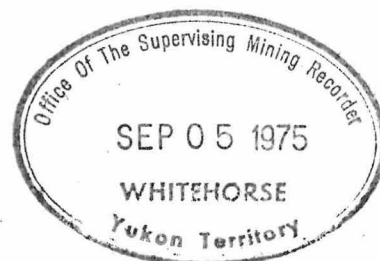
This report has been examined by the Geological Evaluation Unit and is recommended to the Commissioner to be considered as representation work in the amount of \$ 2100

D.B. Craig
Resident Geologist or
Resident Mining Engineer

Considered as representation work under Section 53 (4) Yukon Quartz Mining Act.

B.R. Baxter
B.R. BAXTER
Supervising Mining Recorder

[Signature]
Commissioner of Yukon Territory



N.T.S. 106-F-4

Bill Dave Farion
P. Geol.

Bill Dave Farion

090030

INDEX

- A. SUMMARY
- B. INTRODUCTION
 - 1. Location
 - 2. Property
 - 3. Field Methods
 - 4. Geography
- C. GEOLOGY
 - 1. Lithology
 - 2. Structure
 - 3. Age
- D. GEOCHEMISTRY
- E. CONCLUSIONS
- F. RECOMMENDATIONS

Appendix - Names & Addresses of Personnel.

Statement of qualifications

Assay results

Costs.

- Plate 1 Location Map
- 2 Geology and claims
- 3. Zinc values
- 4. Lead-Cadmium values

A. SUMMARY

1. Following the recognition of environments favourable to the formation of stratabound lead-zinc deposits, Great Plains conceived of and operated a geochemical reconnaissance program in the Bonnet Plume area of the Yukon Territory. The YUK claims, one of several claim groups staked during the 1974 exploration program, will be the subject of this report.

2. The field crew assembled to complete assessment work on the claim group moved to the base camp at Margaret Lake by May 23, 1975.

Personnel included:

Bill Farion	Party Chief
Barry Edmonson	Student Geologist
Colin Winter	Geologist
Janet Helton	Student Geologist
Romulo Santos	Student Geologist
John Van der Lee	Geological assistant
Nigel Lumsden	Geological assistant
Janet Etkorn	Cook
Mike Hofuis	Helicopter Pilot
Paul Koovisk	Apprentice Engineer

Transwest Helicopters (1965) Ltd., of Burnaby., B.C. supplied a Hughes 500 C helicopter, while Trans North Turbo Air supplied fixed wing support from Mayo. Expediting services were provided by Stirling Expediting Services, Mayo, and assaying was performed by Barringer Research, Whitehorse, Yukon.



MACKENZIE PROJECT

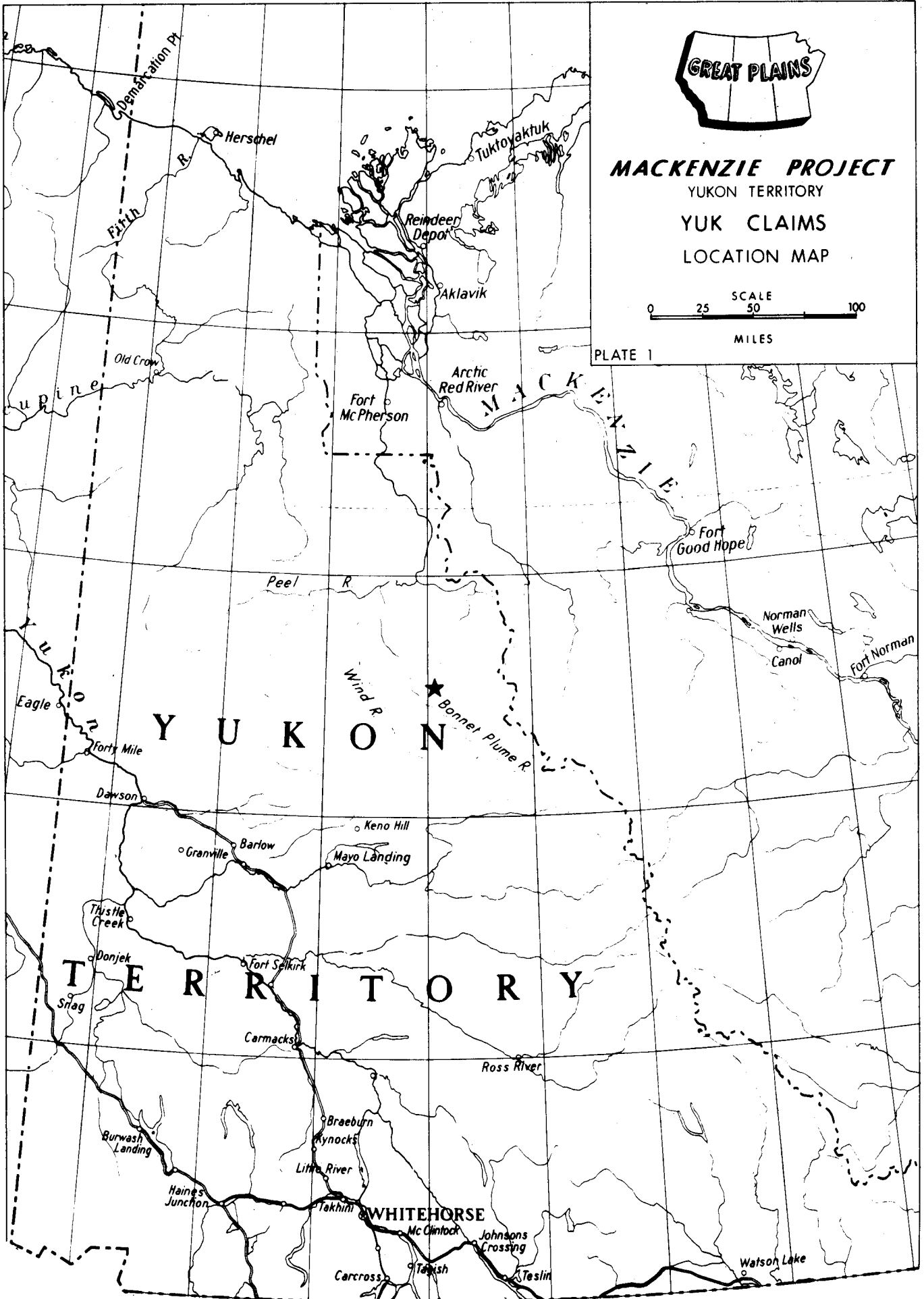
YUKON TERRITORY

YUK CLAIMS

LOCATION MAP



PLATE 1



B. INTRODUCTION

1. Location

The claims are located 4 miles south of Rapitan Creek, 26 miles southeast of Margaret Lake. N.T.S. is 106-F-4 Margaret Lake is one of the few lakes in the area on which float planes can operate.

2. Property

The property consists of 20 contiguous mineral claims.

<u>Claims</u>	<u>Grant Numbers</u>
YUK 1-12	Y95241-Y95252
YUK 13-20	Y96469-Y96476

3. Field Methods

The area was mapped on a scale of 1060 feet = 1 inch. A blowup, to 1 inch = 1060 feet, was made of a 9" x 9" airphotograph (1"=5280') taken by the National Air Photo Library (Energy, Mines and Resources Ottawa) and used as a basemap. Use was made of the zinc spot test, a chemical which turns red in contact with the weathering products of zinc sulphides. A cold extractable test for heavy metals was made on each stream sediment sample taken. Soil, stream and rock samples taken were submitted to Barringer Research for analysis.

4. Geography

The claims are situated on a rounded mountain ridge and valley. Vegetation consists of alpine shrubs and grasses.

C. GEOLOGY

1. Lithology

The units described are plotted on a geological map at an approximate scale of 1" = 1060' using a blowup of a 1968 National Air Photo Library airphotograph as a base map.

The lithologies are as follows;

Unit 1

The unit consists of a black shale.

Unit 2

The unit consists of a conglomerate with a sandstone matrix and pebble to boulder sized clasts.

Unit 3

The unit consists of a fine grained, off-white, grey weathering, moderately well sorted, subrounded orthoquartzite with hematite specks and shaley partings.

Unit 4

The unit consists of a micro - to very fine - crystalline, silicified, very light grey, orange to buff weathering dolomite with disseminated pyrite and quartz veinlets. The lower part of the unit is massive, becoming laminated in the upper sections. The laminae consist of secondary chert which stands out as bands whereas the more recessive dolomite weathers out. The bands show small scale folding and crenulation.

Interbeds of microcrystalline algal limestone occur in the upper beds. They are light to medium grey, weathering buff to orange, well bedded, flaggy, and show the siliceous algal bands which are more resistant than the limestone.

Unit 5

The unit consists of light to dark grey weathering black, poorly bedded to massive limestone. Algal stacked hemispheres are visible in the upper part of the unit.

Unit 6

The unit consists of finely crystalline, chalky, porous, flaggy, recessive limestone with a crumbly sugary texture and quartz filled vugs.

Unit 7

The unit consists of a carbonate unit overlain by a thin bed of sandstone (7C) and underlain by a thin shale unit (7a).

Unit 7b

The unit consists of dark grey to black, light brown to grey weathering microcrystalline limestone with dolomite interbeds. Light brown weathering calcite veinlets and hematite specks occur in the limestone. The fine to microcrystalline dolomite interbeds are light grey, orange weathering poorly bedded, blocky and rubbly weathering.

Units 7a and c

The units consist of fine grained sandstone lenses interbedded in and deforming soft shales. Soft sediment and boudin features are evident. The shales are laminated and very dark grey.

Unit 8

The unit consists of interbeds of limestone, dolomite, argillite and quartzite.

Unit 8a

The unit consists of laminated to thin bedded, grey, light grey to buff weathering limestone with dark grey to brown banded silicified algal laminations.

Unit 8b

The unit consists of olive to yellow-green, bright orange weathering, laminated argillite.

Unit 8c

The unit consists of black, light grey to orange weathering, silty limestone with interbeds of banded medium crystalline and microcrystalline, siliceous dolomite displaying boudinage. The limestone becomes a limestone conglomerate up section with a microcrystalline matrix. Outcrop is poor.

Unit 8d

The unit consists of argillites and quartzite similar to unit 8b.

Unit 8e

The unit consists of microcrystalline, dark grey, light grey to buff weathering limestone displaying algal laminations.

Unit 8f ≡ Unit 8b

Unit 8g

The unit consists of massive, fine grained, light to medium grey-green, orange weathering quartzite containing disseminated pyrite.

Unit 8h

The unit consists of microcrystalline, dark grey, light grey weathering limestone. Weathered surfaces display a rough texture.

Unit 8i ≡ Unit 8g

Unit 8j

The unit consists of medium grey, medium grey-green weathering, slightly calcareous siltstone and shale.

Unit 9

The unit consists of a fault bound sequence covered by claim YUK 16 which can be divided into three sub-units.

Unit 9a

The unit consists of silicified finely crystalline, very light grey-green, light brown to orange weathering dolomite with fine grained spheroidal mottling, and wavy banding which suggests algal laminates. The unit is poorly bedded to massive.

Unit 9b

The unit consists of sandstone conglomerate interbeds. The sandstone is very-fine to coarse grained, mauve-grey to brown, dark brown weathering, well to poorly sorted with limestone pebbles, and cemented with calcite. The conglomerate, occurring as interbeds, consists of limestone and sandstone clasts up to boulder size.

Unit 9c

The unit consists of black to dark grey, light grey to buff weathering, crumbly limestone with fine calcite veinlets and small vugs. Bedding is poor.

Unit 10

The unit consists of non-calcareous dark brown to black shale with interbeds of dark grey, silty, argillaceous and micaceous dolomite. The unit is recessive and distinctively dark grey weathering.

Unit 11

The unit consists of a coarsely crystalline gabbro sill approximately 100 feet thick. Large laths of sericitized plagioclase form approximately 60% of the rock. Texture is sub-ophitic. The upper contact of the sill is irregular with variations of approximately ten feet in thickness.

2. Structure

The lithologies mapped occur in the axis of a large syncline with small faults offsetting the units. A major fault may run through the stream valley. The core of the syncline contains the H2 unit mapped by D.K. Norris (G.S.C. 1975) with the Katherine Group dolomites and clastics forming the two limbs of the structure.

3. Age

Norris (G.S.C. 1975) mapped the predominantly carbonate units in the core of the syncline as belonging to the H2a (unnamed) limestone and dolomite unit. Unit 6, a buff recessive limestone is flanked by a lower dark grey to black microcrystalline limestone; Unit 5 and 7.

Unit 1-4 and 8-10, formed the south and north limbs of the syncline, are Katherine Group clastics and dolomite.

Both the H2 and Katherine Group are in the Lower Proterozoic.

D. GEOCHEMISTRY

Soil samples were taken along two contours where possible. Soil development is poor along the steep slopes, with a high percentage of rock fragments. Organic material and vegetation are often found directly over bedrock or boulders. The "B" horizon sampled consisted of sand to clay sized particles. Sufficient "B" horizon soil could be found for a sample at each location.

Analyses were conducted by Barringer Research in Whitehorse. Samples were dried, screened to 80 mesh, digested in perchloric acid (HCl O4), and analysed on an atomic absorption unit.

The individual metals are plotted at the locations of the soil sample sites on Plates 4 and 5. Assay results are enclosed in Appendix 3.

Several high values of zinc and lead appear in Unit 3. The highest, 820 ppm zinc contains 86 and 2.9 ppm lead and cadmium respectively. The carbonates in unit 3 are fine-grained limestone with interbeds of dolomite and overlain by a thin sandstone and shale. The other values in the unit are approximately twice background.

Unit 5 is a similar limestone to unit 3 with zinc values in the 400 to 750 range (approximately 3-4 times background).

E. CONCLUSIONS

The geochemistry results indicate possible anomalous values in the limestones of units 3 and 5. The black color and fine grained nature of the limestones indicate a deeper water deposition under reducing conditions. This type of limestone may have a high background metal content. The results obtained to date are encouraging and should be followed up. The soil sampling indicates that the intrusive has little effect on mineralization in the limestones.

F. RECOMMENDATIONS

The anomalous limestone (Units 3 and 5) should be sampled over the entire area covered by the claim block. Trenching will be difficult in the area. However if bedrock is found near any anomalous soil samples, a trench may be dug. If overburden is thick then a "Winkie Drill" may be used to test the subsurface. Core would be useful to determine if the units would make a host unit for a mineral deposit. Rock chip samples of the units in the vicinity of the anomalous stream samples have been taken. If the assays reveal that the dyke is high in zinc and lead, then the stream sediment anomalies can be attributed to the dyke and not to mineralization in the carbonates. Otherwise the anomaly can probably be attributed to the carbonate section and should be tested at depth.

STATEMENT OF QUALIFICATIONS

1. I graduated with a Bachelor of Science in Geology from the professional program at the University of Alberta in April, 1971.
2. I have been employed as a geologist with various companies since graduation in 1971.
3. I have been employed as a geologist in the mineral division of Great Plains since August 1972.
4. I applied and was accepted into the Association of Professional Engineers, Geologists and Geophysicists of Alberta in 1973.
5. I have supervised and carried out the work outlined in this report.



Bill Dave Farion
P. Geol.,

NAMES AND ADDRESSES OF PERSONNEL

Janet Elizabeth Etzkorn Cook,
7169 Maureen Crescent,
BURNABY, 2,
British Columbia.

Barry William Edmonson, Student Geologist
2527 - 17th Street N.W.
CALGARY,
Alberta.

John Donald Gregory Van der Lee Geological Assistant.
8212-10th Street S.W.
CALGARY,
Alberta.

Romulo D. Santos Student Geologist
3903 - 14th Avenue N.E.
CALGARY,
Alberta.

Janet Lenore Helton Student Geologist
947 Canfield Crescent S.W.
CALGARY,
Alberta.

Colin Quinton Winter Geologist (B.A. Oxon)
'Greenways',
37 Keniworth Road,
Ealing,
LONDON, W55PA,
England.

Nigel Lumsden, Geological Assistant
c/o Great Plains Development
Company of Canada, Ltd.,
736 - 8th Avenue S.W.
CALGARY,
Alberta.

Bill Dave Farion, Party Chief
#84 210-86th Avenue S.E.
CALGARY,
Alberta.

Mike Hofuis Transwest Helicopters
Paul Koovisk Burnaby, B.C.:



BARRINGER RESEARCH Limited

304 Carlingview Drive
Rexdale, Toronto, Canada
Phone: 677-2491
Cable: Baresearch

sub claims

Geochemical
Laboratory
Report

DATE
June 25th, 1975

Great Plains Development
736-8th Avenue S.W.
Calgary, Alberta

Attention: B. Farion

REPORT NUMBER 17-A

SAMPLE NUMBER	HC10 ₄	HC10 ₄	HC10 ₄	Sample No.	HC10 ₄	HC10 ₄	HC10 ₄
	Pb ppm	Zn ppm	Cd ppm		Pb ppm	Zn ppm	Cd ppm
RS-5-6-14-1	31	85	5.0	RS-5-6-14-21	62	200	1.8
2	37	66	1.8	22	44	89	2.1
3	55	130	1.4	23	45	75	2.0
4	44	140	1.7	24R	46	67	2.1
5	68	170	1.6	25R	24	35	1.5
6	78	250	1.8	26R	63	280	4.5
7	75	78	2.4	27R	42	39	2.6
8	60	280	2.0	28R	33	115	1.3
9	59	400	3.2	29R	48	3250	7.0
10	73	270	2.4	30R	70	250	4.5
11	49	87	1.9				
12	50	90	2.6				
13	45	140	2.2				
14	62	230	1.6				
15	58	210	1.8				
16	86	820	2.9				
17	150	415	2.7				
18	57	58	2.4				
19	160	280	2.4				
20	66	130	1.8				

EXPENDITURES

YUK CLAIMS

1-20

ASSAYING	\$ 266.70
SALARIES	\$ 830.60
HELICOPTER	\$1,092.50
FIXED WING	\$ 543.40
TRAVEL AND FREIGHT	\$ 121.00
OFFICE SUPPLIES	\$ 238.20
CAMP SUPPLIES	<u>\$ 843.00</u>
	\$2,945.40
	=====

Camp Supplies

1	2	3	4	5	6	7	8	9	10	11	12
AFE	5308	Salaries	Fixed	Travel	Office	Camp	Helicopter	Kitchen			
		Wing	Freight	Supplies	Supplies						
1	Feb 14	Energy Mines + Rea	Mosaics		237.00						
2	25-28	TNTA Fuel haul	35%	1463.00							
3	25-27	Knowledge	50%		34.25						
4	Mar 14	Maps Reserve Gen			14.00						
5	6	TNTA Fuel haul	35%	141							
6	Feb 28	TNTA		1470							
7	Mar 5	TNTA		122.85							
8	7	TNTA		245.70							
9	7	GSC			69.00						
10	FEB. 20	FUEL JP4	35%			1592.27					
11	Mar 27	TNTA		290.16							
12	Apr 2	BCI 12 topolins	50%		25.65						
13	Mar 12	Energy Mines + Rea	5 photos 50%		31.00						
14	Mar 16	"	" 10 air photos 50%		27.00						
15	27	TNTA	35%	1182.9							
16	APR 30	NW Survey Topomap			500.96						
17	Apr 30	Ribter				79.95					
18	May 5	Car freightways	35%		95.57						
19	19	Air fares			399.35						
20	May 30-23	TNTA		564.20							
21	15	Caldraft	drafting supplies		31.15						
22	20	Bannys	camp supplies			337.26					
23	23	Chateau	Manjo	99.00							
24	23	Bannys	camp supplies			219.21					
25	" 16	Library	keracing report		3.75						
26	26	Atlas	Copex plunger parts			258.85					
27	14	Dominion	Aluminum Tent			488.88					
28	22	Air fare	R Santos 50%	65.50							
29		C.P. Air	Northward freight	89.64							
30		C.P. Air	"	10.00							
31	29	Urban	explosives crimpers	8.00		5.00					
32	30	Freight		8.00		5.00					
33	30	Hooper	James Walter		4.50						
34	30	Kessine	Whitpass			27.48					
35	June 3	Bannys	camp supplies			118.27					
36				2959.88	701.31	944.01	3377.77				
37								7982.91			
38											
39											
40											

Camp Supplies

	Salaries	Fixed Wages	Travel Freight	Office Supplies	Camp Supplies	
1 May Total Forward		2959.89	701.31	944.01	3377.77	7982.97
2 May 26 International Service Supplies					7192	
3 May 22 Yukon Explosives					137.34	
4 May 20 CNTU Radio license				7.00		
5 June 4 Jumbo beaver @ 155 1/2 GP		100.75				
6 June 6 Lannys Dept Store camp supplies					443.02	
7 June 6 Northward freight			10.00			
8 May Chugger rental 1 bag @ 5.00					5.00	
9 June 5 Horwoods office supply				41.85		
10 May Stirling Expediting				202.50		
11 June 14 Lannys camp supplies					605.51	
12 June 14 T.N.T.A. Other		227.50				
13 May 22 Canadian Propane					117.98	
14 May 16 Freight			20.82			
15 May 13 Cheaney Hardware					6.97	
16 May 16 B.C.I. chronometers, hand lenses				78.75		
17 May 20 White Pass kerosene & 2 cpl. oil					41.62	
18 June 20 T.N.T.A. OTTER 1/2 GP 1/2 ANARCO		227.50				
19 June 20 Groceries					292.96	
20 June 15 Stirling Expediting 50%				167.28		
21 June 27 Lannys Dept Store					214.83	
22 June 14 " "					39.04	
23 June 27 Northward ticket C. Winter			1.71			
24 May 16 B.C.I. chronometers, hand lenses						
25 June 11 Cheaney - chemical				445.61		
26 June 13 beaker 2 malloxes					22.60	
27 May 5 Hangers mallox, wire, rope					126.60	
28 June 10 B.C.I. chronometer				50.40		
29 June 20 Lannys 50%					320.99	
30 July 2 Progens cot & canopy					38.95	
31 July 7 Fuel 5 bll. @ 63		455			515.00	
32 July 7 Other trip		455				
33 July 28 Lannys Beaver traps		351				
34 July 28 White Pass 4 bll fuel					25.2	1210.10
35						
36						
37						
38						
39						
40						

Document with
June 26

Barringer Assay

	1	2	3	4	5	6	7	8	9	10	11	12
Barringer Assay Samples	5310	Ken	Ben	Jeanette	Wendy	Yogi	Yuk					
May 27 9 rock										265		
28 2 rock			590									
28				295								
28			295									
29				1180								
29						590						
June 4/75			3570									
June 7 truck				590								
June 10								590				
10								1180				
June 26 BE soil				1760								
Ken Cl soil			9680									
Jeanette JH 55-29							11					
June 1			1760									
May 31 JH							2420					
JU			4180									
BF rock			1180									
JU-6-2			1980									
JH 5-6-2 16 samples						3520						
JV 5-6 + NL 5-6-8-9				16720								
RS 5-6-9								23540				
								14740				
							7700		4620			
		5940										
			8800									
25 element		4200										
		5								2640		
										1770		
											8850	
25 element		59										
lilt		3740										
lilt		1166										
25 element		72										
		295										
June 19/75										5060		
Total June 19	43555	18315	29345	14740	5210	47115	13910					

Barringer Assay Cost.

	1	2	3	4	5	6	7	8	9	10	11	12
	5310	5308	5308	5308	5308	5308	5308	5308				
		Ken	Ben	Janette	Windy	Yogi	YUK	JANE				
Totals to June 19/75	433.75	183.15	293.45	147.40	52.10	471.15	139.10					
24 soil samples June 20		52.90										
58 " " June 20							127.60					
88 " " " 22					193.60							
73 " " " 24				160.60								
		235.95	293.45	308.00	245.70	471.15	266.70					
June 26 (16, 3, 7) 31 sample	68.20											
June 29 35 sample												
June 26 15 soil sample											77	
June 29 " alt	24.20										33	
July 4 " "											38	
July 4 " "	14.300		22.00									
July 7 " "	7											
July 7 (changed from 5305 to 5310)	70.40											
July " " "	52.80											
July " " "	17.70											
July 11 27 silt	87.75											
July " 11 + 14 " "	72.50											
July " 3 rocks	15.00											
	1618.90	235.95	315.45	308.00	245.70	471.15	266.70	198.00		2040.95		for claims only.
July 15 13 rock	50.70											
July 16 9 rock + 116 soil			368.35									
July 11 soil + rock samples	191.10											
July 16 #30	187.60											
July 20 #31											206.50	
July 21 32												142.10
July 25 33	273.10											
July 25 34											46.40	72.50
July 25 34												20.30
July 25 35												18.00
	2321.40	235.95	683.80	308	245.70	471.15	266.70	198.00		252.90		252.90

May Personal

	1	2	3	4	5	6	7	8	9	10	11	12
5308 Salaries as applied to claims	5310	5309 KEN	BEV	JENETTE	WINDY	JOGI	YUK	CLAIMS OFFICE + TRAVEL	EXP ACCTS	Cook		
FEB 25-25 BDF		40							25.60	25		
MAR SALARY BDF		40							160.00			
JH EXP									27.00			
CW "									2155			
	1							40				
	2							80				
	1	40						40				
	2	120						80				
		160										
	4	200						160				
		40										
		40										
Travel	4	200						160		40 (5310)		
Mobilization		200								40 (5310)		
Shing fuel	1	160	40.00							40 (5310)		
		240								40		
	1	200	40.00							40		
	4	80	160.00							40		
	4	80	160.00							40		
	6		160.00				80.00			40		
	6	80	160.00							40		
	6	40	40	120.00	40.00					40		
	5	80	40	160.00						40		
	5	80	80	40	8.00					40		
	54	2200	240	960	200.00	40.00	80.00	560.00	234.00	360		
		160										
		2360										
									9.54			
											2440	NOT INCL EXP ACCTS

June Personnel

	1	2	3	4	5	6	7	8	9	10	11	12	
June Personnel 5308 Salaries	5310	5308 KEN	BEV	JEANETTE	WINDY	YUGI	YUK	JANE	Cook 5308	Cook 5310	5310	5308	
1	7	120.00				80				20	20	2900.00	2620
2	7	1200				80				20	20	2640	2800
3			80			120				40			3120
4		40.00	240							40		2680	3400
5			200			40				40			3720
6		120.00				80				20	20	2880	3900
7				120			160			40			4220
8			40	80			160			40.00			4540
9		40		80			160			40.00		2960	4820
10				120			160			40.00			5140
11		40		80	40		120			40.00		2960	5420
12		280									4000	3220	
13		160						120		20	20	3400	5560
14		160						120		20	20	3580	5700
15		160		40				40		20	20	3760	5840
16		240						40			40	4040	5880
17		200						80			40	4280	5960
18		160						120			40	4480	6060
19		160	40					80		40		4640	6240
20				40	80	80	40	40		40		4880	6560
21		200				80					40	4880	6640
22		200				80					40	5160	6720
23		200				80					40	5400	6800
24		40				80					40	5440	7000
25		200						40			40	5680	7040
26		160									40	5880	7120
27		160						80			40	6080	7200
28		160						80			40	6280	7280
29		160						80			40	6480	7360
30		240									40	6560	

July Personnel

	1	2	3	4	5	6	7	8	9	10	11	12
July Personnel	5310	5308									Total	Total
		Ken	Ben	Jeanette	Windy	Yogi	Yuk	Jen	5310	5308	5310	5308
									Cook	Cook	\$6560	\$7360
1	240								40		6940	
2			240							40	7040	7640
3	160		80						40		7040	
4	240								40		7320	
5	200								40		7560	
6	200								40		7500	
7	200								40		7040	
8	200								40		8280	
9	200								40		8520	
10	200								40		8760	
11	315								40		9115	
12	160		115			40			40		9315	7795
13	200						115		40		9555	7910
14	200								40		9795	8025
15	40		200						40		9875	8225
16	SWITCHED TO NEW SHEET 16+											
17												
18												
19												
20												
21												
22												
23												
24												
25												
26												
27												
28												
29												
30												
31												
32												
33												
34												
35												
36												
37												
38												
39												
40												

JULY PERSONEL AFTER JULY 16

	1	2	3	4	5	6	7	8	9	10	11	12
	5310	B BEV	SLATS	LAVRA	BVM	JANE	YUK	YOOI			5310	5308
1												
2												
3												
4												
5												
6												
7												
8												
9												
10												
11												
12												
13												
14												
15												
16												
17												
18												
19												
20												
21												
22												
23												
24												
25												
26												
27												
28												
29												
30												
31												
32												
33												
34												
35												
36												
37												
38												
39												
40												

MOM + CW

115.00

Cook's salary in damage or repair after 16

9875 8225
 9915 8465
 10155 8505
 9785
 10235 8945
 9185
 9125
 10395 9505
 10555 9765
 10595 9785
 10835
 10875 9965
 10955 10145
 11195
 11435
 11675
 11915

May Helicopter

	1	2	3	4	5	6	7	8	9	10	11	12
<i>May Helicopter As Applied to Claims</i>	5310	5309 Kon	Bo	Janette	Wendy	Yogi	Yak	General				
1												
2												
3												
4												
5												
6												
7												
8												
9												
10												
11												
12												
13												
14												
15												
16												
17												
18												
19												
20		276										
21								230				
22		437										
23		368										
24		115						253				
25		322	46	184								
26		736		207								
27				230			299					
28			253	322								
29			46	46	207		207					
30		287.50						287.50				
31		134	161		115							
32		2679.50	460	989	322	207	299	790.50				
33												
34								3097.50				<i>Total Claims</i>
35												
36								5727.00				<i>Total Contract for May</i>
37												
38												
39												
40												

June Helicopter

	1	2	3	4	5	6	7	8	9	10	11	12	
June Helicopter	5310	5308 Ken	Bev	Jeanette	Shirley	Yogi	Yuk	Jane			Totals	Total	
											5310	5304	
1	230.00			149.50	149.50						Carried Forward	2699.50	3092.50
2	460			138	138								
3	184			23	23								
4	115	322											
5		391											
6	713			115	115								
7			299				230						
8	437	115					270						
9	529		115				184						
10	690		161				207						
11													
12	1495												
13	460								322				
14	483								161				
15	391												
16	1012												
17	1679								253		8978	3887	
18	460								230		11577.50	8345.00	
19	529	12650							126.50				
20											12566.50	7417.50	
21	184				207						13302.50	7624.50	
22	736				184						13647.50	7508.50	
23	345										14958.50	8015.50	
24	1311			207							15878.50	8496.50	
25	736			115						36.8	17304.50	8654.50	
26	1426									161	17649.50	8981.50	
27	345									322			
28	920									7			
29	920									713	18569.50	9694.50	
30	320									322	15889.50	10016.50	
31	322									644	19211.50	10660.50	
32													
33													
34													
35													
36													
37													
38													
39													
40													

added
Jan 24

July Helicopter

	July Helicopter									Total	Total
	5310	5308 Ken	Ben	Janette	Wendy	Yogi	Yuh	Jane	Stack	5310	5308
1										1921.50	10660.50
2	101200		155							20223	10798
3	460									20693	
4	506		184							21189	10982
5	206 B from Kawi H TNTA	319								21508	
6	206 B FORESTRY TNTA	1102								22610	
7	206 B " TNTA	1160								23770	
8	Add in 1.1 hrs for July 4	253								24023	
9											
10	1979									26001	
11	1426									2600	
12	736									27427	
13	1196	92		115						28163	11097
14	1012						138			29359	11327
15	529							322		30371	11649
16			299							30900	11948
17											
18											
19											
20											
21											
22											
23											
24											
25											
26											
27											
28											
29											
30											
31											
32											
33											
34											
35											
36											
37											
38											
39											
40											

new sheet started
July 16

July Helicopter after July 15

	1	2	3	4	5	6	7	8	9	10	11	12
	5310	5308 Bw	Hate	Lama	BUH	YUK	YOGI	JANE			5310	5308
1												
2												
3												
4												
5												
6												
7												
8												
9												
10												
11												
12												
13												
14												
15												
16		575		276							31475	12224
17		23	40								31498	12431
18												13215
19		276									31774	13443
20							230					14317
21			115			276						17715
22		1012						115			32786	15030
23		207	138			460					32993	15625
24		391									33384	
25		529									33915	
26							322					15950
27			138				207			644		16939
28		736	138								34649	
29		805									35454	
30		667									36121	
31		1245									37386	
32												
33												
34												
35												
36												
37												
38												
39												
40												

FLIGHT REPORT

TRANSWEST HELICOPTERS (1965) LTD.
2792 NORLAND AVE., BURNABY, B.C. V5B 3A8

04005

CHARTERER GREAT PLAINS DATE 5/23/75
ADDRESS _____ A/C CF - DNV
PILOT SIGNATURE Michael Hrus BASE MARGARET LK FUEL CUST TW

OPERATION REMARKS	PASS	TAKE OFF	LAND	WT OF CARGO	HOURS	MIN.
KIWE LAKE 5310					0	4
SLING SUPPLIES FROM LAKE 5360					1	2
30 GAL FUEL USED						
TYPE OF CONTRACT 1 <input type="checkbox"/> 2A <input type="checkbox"/> 2B <input type="checkbox"/> OTHER _____						
AUTHORIZED BY CHARTERER REP. <i>Bill Linton</i>			HOURS FOR DAY <u>1.6</u> " MONTH <u>5.7</u> " CONTRACT _____			

FLIGHT REPORT

TRANSWEST HELICOPTERS (1965) LTD.
2792 NORLAND AVE., BURNABY, B.C. V5B 3A8

04003

CHARTERER GREAT PLAINS DATE 5/21/75
ADDRESS _____ A/C CF - DNV
PILOT SIGNATURE Michael Hrus BASE MARGARET LK FUEL CUST TW

OPERATION REMARKS	PASS	TAKE OFF	LAND	WT OF CARGO	HOURS	MIN.
SLING FUEL FROM LAKE 5308					0	8
SUPPLIES FROM KIWE LAKE 5308					0	2
20 GAL FUEL USED						
TYPE OF CONTRACT 1 <input type="checkbox"/> 2A <input type="checkbox"/> 2B <input type="checkbox"/> OTHER _____						
AUTHORIZED BY CHARTERER REP. <i>Bill Linton</i>			HOURS FOR DAY <u>1.0</u> " MONTH <u>2.2</u> " CONTRACT _____			

FLIGHT REPORT

TRANSWEST HELICOPTERS (1965) LTD.
2792 NORLAND AVE., BURNABY, B.C. V5B 3A8

04004

CHARTERER GREAT PLAINS DATE 5/22/75
ADDRESS _____ A/C CF - DNV
PILOT SIGNATURE Michael Hrus BASE MARGARET LK FUEL CUST TW

OPERATION REMARKS	PASS	TAKE OFF	LAND	WT OF CARGO	HOURS	MIN.
SLING SUPPLIES FROM LAKE 5310					1	9
38 GAL FUEL						
TYPE OF CONTRACT 1 <input type="checkbox"/> 2A <input type="checkbox"/> 2B <input type="checkbox"/> OTHER _____						
AUTHORIZED BY CHARTERER REP. <i>Bill Linton</i>			HOURS FOR DAY <u>1.9</u> " MONTH <u>4.1</u> " CONTRACT _____			

FLIGHT REPORT

TRANSWEST HELICOPTERS (1965) LTD.
2792 NORLAND AVE., BURNABY, B.C. V5B 3A8

Wingie 04002

CHARTERER GREAT PLAINS DATE 5/20/75
ADDRESS _____ A/C CF - DNV
PILOT SIGNATURE Michael Hrus BASE MARGARET LK FUEL CUST TW

OPERATION REMARKS	PASS	TAKE OFF	LAND	WT OF CARGO	HOURS	MIN.
FERRY FLT FROM MAYO TO MARGARET LAKE 5310					1	2
TYPE OF CONTRACT 1 <input type="checkbox"/> 2A <input type="checkbox"/> 2B <input type="checkbox"/> OTHER _____						
AUTHORIZED BY CHARTERER REP. <i>Bill Linton</i>			HOURS FOR DAY <u>1.2</u> " MONTH _____ " CONTRACT _____			

FLIGHT REPORT

 TRANSWEST HELICOPTERS (1965) LTD.
 2792 NORLAND AVE., BURNABY, B.C. V5B 3A6

04010

 CHARTERER GREAT PLAINS DATE 5/27/75
 ADDRESS 736 8TH AVE SW CALGARY ALBERTA A/C CF-DNV
 PILOT SIGNATURE Michael Hrus BASE MARGARET LK FUEL CUST TW

OPERATION REMARKS	PASS	TAKE OFF	LAND	WT OF CARGO	HOURS	MIN.
Fly Camp, BONNET AND RTN 5308					1	0
DEV GROUP						
RECON VDCI 5308					1	3
TYPE OF CONTRACT <input type="checkbox"/> 1 <input type="checkbox"/> 2A <input type="checkbox"/> 2B <input type="checkbox"/>		AUTHORIZED BY CHARTERER REP. <u>Bill Janson</u>		HOURS FOR DAY <u>2.3</u>		
OTHER _____				" MONTH <u>15.9</u>		
				" CONTRACT _____		

FLIGHT REPORT

 TRANSWEST HELICOPTERS (1965) LTD.
 2792 NORLAND AVE., BURNABY, B.C. V5B 3A6

04007

 CHARTERER GREAT PLAINS DATE 5/25/75
 ADDRESS 736 8TH AVE SW CALGARY, ALBERTA A/C CF-DNV
 PILOT SIGNATURE Michael Hrus BASE MARGARET LK FUEL CUST TW

OPERATION REMARKS	PASS	TAKE OFF	LAND	WT OF CARGO	HOURS	MIN.
Fly Camp, BONNET 5308					0	8
HARRISON CR AND RETURN 5310					1	4
TYPE OF CONTRACT <input type="checkbox"/> 1 <input type="checkbox"/> 2A <input type="checkbox"/> 2B <input type="checkbox"/>		AUTHORIZED BY CHARTERER REP. <u>Bill Janson</u>		HOURS FOR DAY <u>2.2</u>		
OTHER _____				" MONTH <u>9.5</u>		
				" CONTRACT _____		

FLIGHT REPORT

 TRANSWEST HELICOPTERS (1965) LTD.
 2792 NORLAND AVE., BURNABY, B.C. V5B 3A6

04009

 CHARTERER GREAT PLAINS DATE 5/26/75
 ADDRESS 736 8TH AVE SW CALGARY ALBERTA A/C CF-DNV
 PILOT SIGNATURE Michael Hrus BASE MARGARET LK FUEL CUST TW

OPERATION REMARKS	PASS	TAKE OFF	LAND	WT OF CARGO	HOURS	MIN.
Fly Camp (BONNET) AND RTN 5308					0	9
MAYO AND RTN MARGARET LK 5310					2	2
SEARCH FOR AMOCO 5310					1	0
TYPE OF CONTRACT <input type="checkbox"/> 1 <input type="checkbox"/> 2A <input type="checkbox"/> 2B <input type="checkbox"/>		AUTHORIZED BY CHARTERER REP. <u>Bill Janson</u>		HOURS FOR DAY <u>4.1</u>		
OTHER _____				" MONTH <u>13.6</u>		
				" CONTRACT _____		

FLIGHT REPORT

 TRANSWEST HELICOPTERS (1965) LTD.
 2792 NORLAND AVE., BURNABY, B.C. V5B 3A6

04006

 CHARTERER GREAT PLAINS DATE 5/24/75
 ADDRESS 736 8TH AVE SW CALGARY ALBERTA A/C CF-DNV
 PILOT SIGNATURE Michael Hrus BASE MARGARET LK FUEL CUST TW

OPERATION REMARKS	PASS	TAKE OFF	LAND	WT OF CARGO	HOURS	MIN.
SLING FUEL FROM LK 5310					0	5
RECON SNAKE RIVER AND 5308					1	1
KIWS LAKE						
TYPE OF CONTRACT <input type="checkbox"/> 1 <input type="checkbox"/> 2A <input type="checkbox"/> 2B <input type="checkbox"/>		AUTHORIZED BY CHARTERER REP. <u>Bill Janson</u>		HOURS FOR DAY <u>1.6</u>		
OTHER _____				" MONTH <u>7.3</u>		
				" CONTRACT _____		

FLIGHT REPORT
 TRANSWEST HELICOPTERS (1965) LTD.
 2792 NORLAND AVE., BURNABY, B.C. V5B 3A8

04014

CHARTERER GREAT PLAINS DATE 5/31/75
 ADDRESS 736 8TH AVE SW, CALGARY ALBERTA A/C CF DNV
 PILOT SIGNATURE Michael Hux BASE MARGARET RIVER FUEL CUST TW

OPERATION REMARKS	PASS	TAKE OFF	LAND	WT OF CARGO	HOURS	MIN.
RAPTAN CREEK 5308					0	7
JEANETTE 5308					0	5
WIND RIVER 5310					0	6
TYPE OF CONTRACT 1 <input type="checkbox"/> 2A <input type="checkbox"/> 2B <input type="checkbox"/>						
AUTHORIZED BY CHARTERER REP. <u>Bill Janson</u>			HOURS FOR DAY <u>1.8</u>		" MONTH <u>24.9</u>	
OTHER _____			" CONTRACT _____		" CONTRACT _____	

FLIGHT REPORT
 TRANSWEST HELICOPTERS (1965) LTD.
 2792 NORLAND AVE., BURNABY, B.C. V5B 3A8

04012

CHARTERER GREAT PLAINS DATE 5/29/75
 ADDRESS 736 8TH AVE SW, CALGARY ALBERTA A/C CF DNV
 PILOT SIGNATURE Michael Hux BASE MARGARET RIVER FUEL CUST TW

OPERATION REMARKS	PASS	TAKE OFF	LAND	WT OF CARGO	HOURS	MIN.
FLY CAMPS BEY, YOZI, JEANETTE, WINDY AND ROTTEN 5308					2	2
TYPE OF CONTRACT 1 <input type="checkbox"/> 2A <input type="checkbox"/> 2B <input type="checkbox"/>						
AUTHORIZED BY CHARTERER REP. <u>Bill Janson</u>			HOURS FOR DAY <u>2.2</u>		" MONTH <u>20.6</u>	
OTHER _____			" CONTRACT _____		" CONTRACT _____	

FLIGHT REPORT
 TRANSWEST HELICOPTERS (1965) LTD.
 2792 NORLAND AVE., BURNABY, B.C. V5B 3A8

04013

CHARTERER GREAT PLAINS DATE 5/30/75
 ADDRESS 736 8TH AVE SW, CALGARY ALBERTA A/C CF DNV
 PILOT SIGNATURE Michael Hux BASE MARGARET RIVER FUEL CUST TW

OPERATION REMARKS	PASS	TAKE OFF	LAND	WT OF CARGO	HOURS	MIN.
FLY TO WIND AND ROTTEN RIVER					2	5
5310 5020 5305 5020						
TYPE OF CONTRACT 1 <input type="checkbox"/> 2A <input type="checkbox"/> 2B <input type="checkbox"/>						
AUTHORIZED BY CHARTERER REP. <u>Bill Janson</u>			HOURS FOR DAY <u>2.5</u>		" MONTH <u>23.1</u>	
OTHER _____			" CONTRACT _____		" CONTRACT _____	

FLIGHT REPORT
 TRANSWEST HELICOPTERS (1965) LTD.
 2792 NORLAND AVE., BURNABY, B.C. V5B 3A8

04011

CHARTERER GREAT PLAINS DATE 5/28/75
 ADDRESS 736 8TH AVE SW, CALGARY ALBERTA A/C CF DNV
 PILOT SIGNATURE Michael Hux BASE MARGARET RIVER FUEL CUST TW

OPERATION REMARKS	PASS	TAKE OFF	LAND	WT OF CARGO	HOURS	MIN.
FLY CAMP, BONNET, RIVER 5308					1	4
RECORN 5308					1	1
TYPE OF CONTRACT 1 <input type="checkbox"/> 2A <input type="checkbox"/> 2B <input type="checkbox"/>						
AUTHORIZED BY CHARTERER REP. <u>Bill Janson</u>			HOURS FOR DAY <u>2.5</u>		" MONTH <u>18.7</u>	
OTHER _____			" CONTRACT _____		" CONTRACT _____	

FLIGHT REPORT
TRANSWEST HELICOPTERS (1965) LTD.
 2792 NORLAND AVE., BURNABY, B.C. V5B 3A8

04015

CHARTERER GREAT PLAINS DATE 6/1/75
 ADDRESS 736 8TH AVE SW CALGARY ALBERTA A/C CF - DNV
 PILOT SIGNATURE Michael H. Hines BASE MARGARET RIC FUEL CUST TW

OPERATION REMARKS	PASS	TAKE OFF	LAND	WT OF CARGO	HOURS	MIN.
JEANETTE WINDY 5308					1	3
WIND RIVER 5310					1	0
TYPE OF CONTRACT 1 <input type="checkbox"/> 2A <input type="checkbox"/> 2B <input type="checkbox"/>		AUTHORIZED BY CHARTERER, REP. <i>B. L. Jarion</i>		HOURS FOR DAY <u>2.3</u>		
OTHER _____				" MONTH <u>27.2</u>		
				" CONTRACT _____		

FLIGHT REPORT
TRANSWEST HELICOPTERS (1965) LTD.
 2792 NORLAND AVE., BURNABY, B.C. V5B 3A8

04017

CHARTERER GREAT PLAINS DATE 6/3/75
 ADDRESS 736 8TH AVE SW CALGARY ALBERTA A/C CF - DNV
 PILOT SIGNATURE Michael H. Hines BASE MARGARET RIC FUEL CUST TW

OPERATION REMARKS	PASS	TAKE OFF	LAND	WT OF CARGO	HOURS	MIN.
WIND RIVER, (RTN, WEATHER) 5310					0	3
JEANETTE, WINDY (RTN, WEATHER) 5308					0	2
WIND RIVER (RTN, WEATHER) 5310					0	5
TYPE OF CONTRACT 1 <input type="checkbox"/> 2A <input type="checkbox"/> 2B <input type="checkbox"/>		AUTHORIZED BY CHARTERER, REP. <i>B. L. Jarion</i>		HOURS FOR DAY <u>1.0</u>		
OTHER _____				" MONTH <u>31.4</u>		
				" CONTRACT _____		

FLIGHT REPORT
TRANSWEST HELICOPTERS (1965) LTD.
 2792 NORLAND AVE., BURNABY, B.C. V5B 3A8

04016

CHARTERER GREAT PLAINS DATE 6/2/75
 ADDRESS 736 8TH AVE SW CALGARY ALBERTA A/C CF - DNV
 PILOT SIGNATURE Michael H. Hines BASE MARGARET RIC FUEL CUST TW

OPERATION REMARKS	PASS	TAKE OFF	LAND	WT OF CARGO	HOURS	MIN.
WIND RIVER 5310					2	0
JEANETTE AND WINDY 5308					1	2
TYPE OF CONTRACT 1 <input type="checkbox"/> 2A <input type="checkbox"/> 2B <input type="checkbox"/>		AUTHORIZED BY CHARTERER, REP. <i>B. L. Jarion</i>		HOURS FOR DAY <u>3.2</u>		
OTHER _____				" MONTH <u>30.4</u>		
				" CONTRACT _____		

FLIGHT REPORT
TRANSWEST HELICOPTERS (1965) LTD.
 2792 NORLAND AVE., BURNABY, B.C. V5B 3A8

04018

CHARTERER GREAT PLAINS DATE 6/4/75
 ADDRESS 736 8TH AVE SW CALGARY ALBERTA A/C CF - DNV
 PILOT SIGNATURE Michael H. Hines BASE MARGARET RIC FUEL CUST TW

OPERATION REMARKS	PASS	TAKE OFF	LAND	WT OF CARGO	HOURS	MIN.
KEN CLAIMS 5308					1	4
SLING BARRELS FROM OLD CAMP SITE 5310					0	5
TYPE OF CONTRACT 1 <input type="checkbox"/> 2A <input type="checkbox"/> 2B <input type="checkbox"/>		AUTHORIZED BY CHARTERER, REP. <i>B. L. Jarion</i>		HOURS FOR DAY <u>1.9</u>		
OTHER _____				" MONTH <u>33.3</u>		
				" CONTRACT _____		

FLIGHT REPORT
TRANSWEST HELICOPTERS (1965) LTD.
 2792 NORLAND AVE., BURNABY, B.C. V5B 3A6

04024

CHARTERER GREAT PLAINS DATE 6/8/75
 ADDRESS 736 8TH AVE SW CALGARY, ALBERTA A/C CF - DNU
 PILOT SIGNATURE Michael Klein BASE MARGARET RIC FUEL CUST TW

OPERATION REMARKS	PASS	TAKE OFF	LAND	WT OF CARGO	HOURS	MIN.
BEV CLAIMS 5308					0	8
KEN CLAIMS 5308					0	5
BEV CLAIMS 5308					0	4
WIND RIVER 5310					1	9
TYPE OF CONTRACT 1 <input type="checkbox"/> 2A <input type="checkbox"/> 2B <input type="checkbox"/> OTHER _____						
AUTHORIZED BY CHARTERER REP. <i>Bill Jarvis</i>				HOURS FOR DAY <u>3.6</u> " MONTH <u>45.0</u> " CONTRACT _____		

FLIGHT REPORT
TRANSWEST HELICOPTERS (1965) LTD.
 2792 NORLAND AVE., BURNABY, B.C. V5B 3A6

04023

CHARTERER GREAT PLAINS DATE 6/5/75
 ADDRESS 736 8TH AVE SW CALGARY, ALBERTA A/C CF - DNU
 PILOT SIGNATURE Michael Klein BASE MARGARET RIC FUEL CUST TW

OPERATION REMARKS	PASS	TAKE OFF	LAND	WT OF CARGO	HOURS	MIN.
KEN CLAIMS 5308					1	7
TYPE OF CONTRACT 1 <input type="checkbox"/> 2A <input type="checkbox"/> 2B <input type="checkbox"/> OTHER _____						
AUTHORIZED BY CHARTERER REP. <i>Bill Jarvis</i>				HOURS FOR DAY <u>1.7</u> " MONTH <u>35.0</u> " CONTRACT _____		

FLIGHT REPORT
TRANSWEST HELICOPTERS (1965) LTD.
 2792 NORLAND AVE., BURNABY, B.C. V5B 3A6

04023

CHARTERER GREAT PLAINS DATE 6/7/75
 ADDRESS 736 8TH AVE SW CALGARY, ALBERTA A/C CF - DNU
 PILOT SIGNATURE Michael Klein BASE MARGARET RIC FUEL CUST TW

OPERATION REMARKS	PASS	TAKE OFF	LAND	WT OF CARGO	HOURS	MIN.
Yogi CLAIM 5308					1	0
BEV CLAIM 5308					1	3
TYPE OF CONTRACT 1 <input type="checkbox"/> 2A <input type="checkbox"/> 2B <input type="checkbox"/> OTHER _____						
AUTHORIZED BY CHARTERER REP. <i>Bill Jarvis</i>				HOURS FOR DAY <u>2.3</u> " MONTH <u>41.4</u> " CONTRACT _____		

FLIGHT REPORT
TRANSWEST HELICOPTERS (1965) LTD.
 2792 NORLAND AVE., BURNABY, B.C. V5B 3A6

04022

CHARTERER GREAT PLAINS DATE 6/6/75
 ADDRESS 736 8TH AVE SW CALGARY, ALBERTA A/C CF - DNU
 PILOT SIGNATURE Michael Klein BASE MARGARET RIC FUEL CUST TW

OPERATION REMARKS	PASS	TAKE OFF	LAND	WT OF CARGO	HOURS	MIN.
JEANNETTE & WIMDY 5308					1	0
WIND RIVER 5310					1	6
SNAKE RIVER 5310					1	5
TYPE OF CONTRACT 1 <input type="checkbox"/> 2A <input type="checkbox"/> 2B <input type="checkbox"/> OTHER _____						
AUTHORIZED BY CHARTERER REP. <i>Bill Jarvis</i>				HOURS FOR DAY <u>4.1</u> " MONTH <u>39.1</u> " CONTRACT _____		

FLIGHT REPORT

TRANSWEST HELICOPTERS (1965) LTD.
2792 NORLAND AVE., BURNABY, B.C. V5B 3A8

04035

CHARTERER GREAT PLAINS DATE 6/17/75
ADDRESS 736 8TH AVE SW CALGARY, ALBERTA A/C CF-DNV
PILOT SIGNATURE Michael Klein BASE MARGARET LK FUEL CUST TW

OPERATION REMARKS	PASS	TAKE OFF	LAND	WT OF CARGO	HOURS	MIN.
Yuk Plains (5308)					1	1
WIND RIVER, SLAKS CK RECON (5310)					2	2
BEAR RIVER RECON (5310)					1	6
SLING FUEL TO HARRISON CK RTN (5310) MARGARET LK					1	4
LITTLE WIND (5310)					2	1
TYPE OF CONTRACT 1 <input type="checkbox"/> 2A <input type="checkbox"/> 2B <input type="checkbox"/> AUTHORIZED BY CHARTERER REP. <u>B. L. Janson</u> HOURS FOR DAY <u>7.4</u> " MONTH <u>80.4</u> " CONTRACT <u>80.4</u>						

FLIGHT REPORT

TRANSWEST HELICOPTERS (1965) LTD.
2792 NORLAND AVE., BURNABY, B.C. V5B 3A8

04033

CHARTERER GREAT PLAINS DATE 6/15/75
ADDRESS 736 8TH AVE SW CALGARY, ALBERTA A/C CF-DNV
PILOT SIGNATURE Michael Klein BASE MARGARET LK FUEL CUST TW

OPERATION REMARKS	PASS	TAKE OFF	LAND	WT OF CARGO	HOURS	MIN.
SLAKS CK (5310)					1	0
SLING LUMBER FOR DOCK (5310)					0	7
TYPE OF CONTRACT 1 <input type="checkbox"/> 2A <input type="checkbox"/> 2B <input type="checkbox"/> AUTHORIZED BY CHARTERER REP. <u>B. L. Janson</u> HOURS FOR DAY <u>1.7</u> " MONTH <u>68.6</u> " CONTRACT _____						

FLIGHT REPORT

TRANSWEST HELICOPTERS (1965) LTD.
2792 NORLAND AVE., BURNABY, B.C. V5B 3A8

04034

CHARTERER GREAT PLAINS DATE 6/16/75
ADDRESS 736 8TH AVE SW CALGARY, ALBERTA A/C CF-DNV
PILOT SIGNATURE Michael Klein BASE MARGARET LK FUEL CUST TW

OPERATION REMARKS	PASS	TAKE OFF	LAND	WT OF CARGO	HOURS	MIN.
LITTLE WIND #9 (5310)					1	8
MAYO RTN MARGARET LK (5310)					2	6
TYPE OF CONTRACT 1 <input type="checkbox"/> 2A <input type="checkbox"/> 2B <input type="checkbox"/> AUTHORIZED BY CHARTERER REP. <u>B. L. Janson</u> HOURS FOR DAY <u>4.4</u> " MONTH <u>73.0</u> " CONTRACT _____						

FLIGHT REPORT

TRANSWEST HELICOPTERS (1965) LTD.
2792 NORLAND AVE., BURNABY, B.C. V5B 3A8

04032

CHARTERER GREAT PLAINS DATE 6/14/75
ADDRESS 736 8TH AVE SW CALGARY, ALBERTA A/C CF-DNV
PILOT SIGNATURE Michael Klein BASE MARGARET LK FUEL CUST TW

OPERATION REMARKS	PASS	TAKE OFF	LAND	WT OF CARGO	HOURS	MIN.
KEN CLAIMS RECON (5310)					0	6
YUK CLAIMS (5308)					0	7
SLAKS CK (5310)					1	5
TYPE OF CONTRACT 1 <input type="checkbox"/> 2A <input type="checkbox"/> 2B <input type="checkbox"/> AUTHORIZED BY CHARTERER REP. <u>B. L. Janson</u> HOURS FOR DAY <u>2.8</u> " MONTH <u>66.9</u> " CONTRACT _____						

FLIGHT REPORT
TRANSWEST HELICOPTERS (1965) LTD.
 2792 NORLAND AVE., BURNABY, B.C. V5B 3A6

04040

CHARTERER GREAT PLAINS DATE 6/20/75
 ADDRESS 736 8TH AVE SW CALGARY, ALBERTA A/C CF - BUH
 PILOT SIGNATURE Michael Hill BASE MARGARET PK FUEL CUST TW

OPERATION REMARKS	PASS	TAKE OFF	LAND	WT OF CARGO	HOURS	MIN.
WINDY CLAIMS (5308)					0	9
KNORE CL (5310)					0	9
WIND RIVER RECON (5310)					2	3
FLT REPORT #04039 MISSING BECAUSE OF ERROR						
TYPE OF CONTRACT 1 <input type="checkbox"/> 2A <input type="checkbox"/> 2B <input type="checkbox"/>		AUTHORIZED BY CHARTERER REP. <u>Bill Jarvis</u>		HOURS FOR DAY <u>4.1</u>		
OTHER _____				" MONTH <u>7.5</u>		
				" CONTRACT <u>94.3</u>		

FLIGHT REPORT
TRANSWEST HELICOPTERS (1965) LTD.
 2792 NORLAND AVE., BURNABY, B.C. V5B 3A6

04037

CHARTERER GREAT PLAINS DATE 6/19/75
 ADDRESS 736 8TH AVE SW CALGARY ALBERTA A/C CF - DNV
 PILOT SIGNATURE Michael Hill BASE MARGARET PK FUEL CUST TW

OPERATION REMARKS	PASS	TAKE OFF	LAND	WT OF CARGO	HOURS	MIN.
KEN AND YUK CLAIMS (5308)					1	1
LITTLE WIND RIVER (5310)					2	3
TYPE OF CONTRACT 1 <input type="checkbox"/> 2A <input type="checkbox"/> 2B <input type="checkbox"/>						
OTHER _____		AUTHORIZED BY CHARTERER REP. <u>Bill Jarvis</u>		HOURS FOR DAY <u>3.4</u>		
				" MONTH <u>3.4</u>		
				" CONTRACT <u>86.8</u>		

FLIGHT REPORT
TRANSWEST HELICOPTERS (1965) LTD.
 2792 NORLAND AVE., BURNABY, B.C. V5B 3A6

04041

CHARTERER GREAT PLAINS DATE 6/20/75
 ADDRESS 736 8TH AVE SW CALGARY, ALBERTA A/C CF - BUH
 PILOT SIGNATURE Michael Hill BASE MARGARET PK FUEL CUST TW

OPERATION REMARKS	PASS	TAKE OFF	LAND	WT OF CARGO	HOURS	MIN.
MARGARET PK TO HARRISON CK 5310					0	8
SHAW SUPPLIES FROM PORTER 5309 PUDDLE TO HARRISON CK					0	8
TYPE OF CONTRACT 1 <input type="checkbox"/> 2A <input type="checkbox"/> 2B <input type="checkbox"/>						
OTHER _____		AUTHORIZED BY CHARTERER REP. <u>Bill Jarvis</u>		HOURS FOR DAY <u>1.6</u>		
				" MONTH <u>9.1</u>		
				" CONTRACT <u>95.9</u>		

FLIGHT REPORT
TRANSWEST HELICOPTERS (1965) LTD.
 2792 NORLAND AVE., BURNABY, B.C. V5B 3A6

04038

CHARTERER GREAT PLAINS DATE 6/18/75
 ADDRESS 736 8TH AVE SW CALGARY ALBERTA A/C CF - DNV
 PILOT SIGNATURE Michael Hill BASE MARGARET PK FUEL CUST TW

OPERATION REMARKS	PASS	TAKE OFF	LAND	WT OF CARGO	HOURS	MIN.
YUK CLAIMS (5308)					1	0
LITTLE WIND #5 (5310)					2	0
TYPE OF CONTRACT 1 <input type="checkbox"/> 2A <input type="checkbox"/> 2B <input type="checkbox"/>						
OTHER _____		AUTHORIZED BY CHARTERER REP. <u>Bill Jarvis</u>		HOURS FOR DAY <u>3.0</u>		
				" MONTH <u>33.4</u>		
				" CONTRACT <u>33.4</u>		

FLIGHT REPORT

TRANSWEST HELICOPTERS (1965) LTD.
2792 NORLAND AVE., BURNABY, B.C. V5B 3A6

04046

CHARTERER GREAT PLAINS DATE 6/24/75
ADDRESS 736 8TH AVE SW CALGARY ALBERTA A/C CF-BUH
PILOT SIGNATURE Michael Hill BASE MARGARET RIVER FUEL CUST TW

OPERATION REMARKS	PASS	TAKE OFF	LAND	WT OF CARGO	HOURS	MIN.
JEANETTE CLAIMS (5308)					0	5
LITTLE WIND #9 (5310)					2	0
JANE CLAIMS (5308)					1	6
HART RIVER RECON (5310)					1	2
TYPE OF CONTRACT <input type="checkbox"/> 1 <input type="checkbox"/> 2A <input type="checkbox"/> 2B <input type="checkbox"/>		AUTHORIZED BY CHARTERER REP. <u>Bill Jarvis</u>		HOURS FOR DAY <u>5.3</u>		
OTHER _____				" MONTH <u>23.3</u>		
				" CONTRACT <u>110.1</u>		

FLIGHT REPORT

TRANSWEST HELICOPTERS (1965) LTD.
2792 NORLAND AVE., BURNABY, B.C. V5B 3A6

04045

CHARTERER GREAT PLAINS DATE 6/23/75
ADDRESS 736 8TH AVE SW CALGARY ALBERTA A/C CF-BUH
PILOT SIGNATURE Michael Hill BASE MARGARET RIVER FUEL CUST TW

OPERATION REMARKS	PASS	TAKE OFF	LAND	WT OF CARGO	HOURS	MIN.
JEANETTE CLAIMS (5308)					0	9
LITTLE WIND #5 (5310)					2	4
SLATS RIVER (5310)					0	7
MARGARET TO MAYO 5310					1	5
MAYO TO JEANETTE 5310					1	1
TYPE OF CONTRACT <input type="checkbox"/> 1 <input type="checkbox"/> 2A <input type="checkbox"/> 2B <input type="checkbox"/>		AUTHORIZED BY CHARTERER REP. <u>Bill Jarvis</u>		HOURS FOR DAY <u>6.6</u>		
OTHER _____				" MONTH <u>18.0</u>		
				" CONTRACT <u>104.8</u>		

FLIGHT REPORT

TRANSWEST HELICOPTERS (1965) LTD.
2792 NORLAND AVE., BURNABY, B.C. V5B 3A6

04043

CHARTERER GREAT PLAINS DATE 6/22/75
ADDRESS 736 8TH AVE SW CALGARY ALBERTA A/C CF-BUH
PILOT SIGNATURE Michael Hill BASE MARGARET RIVER FUEL CUST TW

OPERATION REMARKS	PASS	TAKE OFF	LAND	WT OF CARGO	HOURS	MIN.
WINDY CLAIMS (5308)					0	8
WINDY RIVER #1 & 2 RECON (5310)					1	5
TYPE OF CONTRACT <input type="checkbox"/> 1 <input type="checkbox"/> 2A <input type="checkbox"/> 2B <input type="checkbox"/>		AUTHORIZED BY CHARTERER REP. <u>Bill Jarvis</u>		HOURS FOR DAY <u>2.3</u>		
OTHER _____				" MONTH <u>11.4</u>		
				" CONTRACT <u>93.2</u>		

FLIGHT REPORT

TRANSWEST HELICOPTERS (1965) LTD.
2792 NORLAND AVE., BURNABY, B.C. V5B 3A8

04071

CHARTERER GREAT PLAINS DATE 7/17/75
ADDRESS 736 8TH AVE SW CALGARY ALBERTA A/C CF-BUH
PILOT SIGNATURE Michael Hrus BASE Margaret Lk FUEL CUST TW

OPERATION REMARKS	PASS	TAKE OFF	LAND	WT OF CARGO	HOURS	MIN.
WENTUCK CHECK (5310)					0	1
BSU (5308)					0	2
Laura (5310)					0	7
TYPE OF CONTRACT 1 <input type="checkbox"/> 2A <input type="checkbox"/> 2B <input type="checkbox"/> OTHER _____						

AUTHORIZED BY CHARTERER REP. Bill Jarvin
HOURS FOR DAY 1.0
" MONTH 102.4
" CONTRACT 189.2

FLIGHT REPORT

TRANSWEST HELICOPTERS (1965) LTD.
2792 NORLAND AVE., BURNABY, B.C. V5B 3A8

04074

CHARTERER GREAT PLAINS DATE 7/19/75
ADDRESS 736 8TH AVE S.W. CALGARY ALBERTA A/C CF-BUH
PILOT SIGNATURE Michael Hrus BASE Margaret Lk FUEL CUST TW

OPERATION REMARKS	PASS	TAKE OFF	LAND	WT OF CARGO	HOURS	MIN.
Laura claims (5310)					0	3
SLING FUEL					0	4
Yuk claims (5308)					1	0
TYPE OF CONTRACT 1 <input type="checkbox"/> 2A <input type="checkbox"/> 2B <input type="checkbox"/> OTHER _____						

AUTHORIZED BY CHARTERER REP. Bill Jarvin
HOURS FOR DAY 2.2
" MONTH 2.2
" CONTRACT 194.8

FLIGHT REPORT

TRANSWEST HELICOPTERS (1965) LTD.
2792 NORLAND AVE., BURNABY, B.C. V5B 3A8

04070

CHARTERER GREAT PLAINS DATE 7/16/75
ADDRESS 736 8TH AVE SW CALGARY ALBERTA A/C CF-BUH
PILOT SIGNATURE Michael Hrus BASE Margaret Lk FUEL CUST TW

OPERATION REMARKS	PASS	TAKE OFF	LAND	WT OF CARGO	HOURS	MIN.
SLATS CK (5310)					1	2
Memo - Margaret Lk (5310)					2	5
TYPE OF CONTRACT 1 <input type="checkbox"/> 2A <input type="checkbox"/> 2B <input type="checkbox"/> OTHER _____						

AUTHORIZED BY CHARTERER REP. Bill Jarvin
HOURS FOR DAY 3.7
" MONTH 101.4
" CONTRACT 188.2

FLIGHT REPORT

TRANSWEST HELICOPTERS (1965) LTD.
2792 NORLAND AVE., BURNABY, B.C. V5B 3A8

04072

CHARTERER GREAT PLAINS DATE 7/18/75
ADDRESS 736 8TH AVE S.W. CALGARY ALBERTA A/C CF-BUH
PILOT SIGNATURE Michael Hrus BASE Margaret Lk FUEL CUST TW

OPERATION REMARKS	PASS	TAKE OFF	LAND	WT OF CARGO	HOURS	MIN.
Laura 4 TRIPS (5310)					3	4
TYPE OF CONTRACT 1 <input type="checkbox"/> 2A <input type="checkbox"/> 2B <input type="checkbox"/> OTHER _____						

AUTHORIZED BY CHARTERER REP. Bill Jarvin
HOURS FOR DAY 3.4
" MONTH 105.8
" CONTRACT 192.6

FLIGHT REPORT

TRANSWEST HELICOPTERS (1965) LTD.

2792 NORLAND AVE., BURNABY, B.C. V5B 3A8

04079

CHARTERER GREAT PLAINS DATE 7/23/75
 ADDRESS 736 8TH AVE SW CALGARY ALBERTA A/C CF - BUN
 PILOT SIGNATURE Michael Hrus BASE MARGARET R/C FUEL CUST TW

OPERATION REMARKS	PASS	TAKE OFF	LAND	WT OF CARGO	HOURS	MIN.
KIWI LAKE (5310)					0	9
BUH CLAIMS (5308)					2	0
BEV " (5308)					0	6
TYPE OF CONTRACT 1 <input type="checkbox"/> 2A <input type="checkbox"/> 2B <input type="checkbox"/> AUTHORIZED BY CHARTERER REP. <u>Bill Tarion</u> HOURS FOR DAY <u>3.5</u> " MONTH <u>17.5</u> " CONTRACT <u>210.1</u>						

FLIGHT REPORT

TRANSWEST HELICOPTERS (1965) LTD.

2792 NORLAND AVE., BURNABY, B.C. V5B 3A8

04077

CHARTERER GREAT PLAINS DATE 7/21/75
 ADDRESS 736 8TH AVE SW CALGARY ALBERTA A/C CF - BUN
 PILOT SIGNATURE Michael Hrus BASE MARGARET R/C FUEL CUST TW

OPERATION REMARKS	PASS	TAKE OFF	LAND	WT OF CARGO	HOURS	MIN.
Laura CLAIMS (5308)					2	6
BEV CLAIMS (5308)					0	35
TYPE OF CONTRACT 1 <input type="checkbox"/> 2A <input type="checkbox"/> 2B <input type="checkbox"/> AUTHORIZED BY CHARTERER REP. <u>Bill Tarion</u> HOURS FOR DAY <u>3.1</u> " MONTH <u>9.1</u> " CONTRACT <u>201.7</u>						

FLIGHT REPORT

TRANSWEST HELICOPTERS (1965) LTD.

2792 NORLAND AVE., BURNABY, B.C. V5B 3A8

04078

CHARTERER GREAT PLAINS DATE 7/22/75
 ADDRESS 736 8TH AVE SW CALGARY ALBERTA A/C CF - BUN
 PILOT SIGNATURE Michael Hrus BASE MARGARET R/C FUEL CUST TW

OPERATION REMARKS	PASS	TAKE OFF	LAND	WT OF CARGO	HOURS	MIN.
YOGI CLAIMS (5308)					0	5
WIND RIVER #11 (5310)					1	1
OGILVIE RIVER RECON (5310)					3	3
TYPE OF CONTRACT 1 <input type="checkbox"/> 2A <input type="checkbox"/> 2B <input type="checkbox"/> AUTHORIZED BY CHARTERER REP. <u>Bill Tarion</u> HOURS FOR DAY <u>4.9</u> " MONTH <u>14.0</u> " CONTRACT <u>206.6</u>						

FLIGHT REPORT

TRANSWEST HELICOPTERS (1965) LTD.

2792 NORLAND AVE., BURNABY, B.C. V5B 3A8

04076

CHARTERER GREAT PLAINS DATE 7/22/75
 ADDRESS 736 8TH AVE SW CALGARY ALBERTA A/C CF - BUN
 PILOT SIGNATURE Michael Hrus BASE MARGARET R/C FUEL CUST TW

OPERATION REMARKS	PASS	TAKE OFF	LAND	WT OF CARGO	HOURS	MIN.
Laura AND BUN CLAIMS (5308)					1	1
BUN CLAIMS (5308)					0	5
Laura " (5308)					0	3
BUN " (5308)					0	7
BUN AND Laura (5308)					1	2
TYPE OF CONTRACT 1 <input type="checkbox"/> 2A <input type="checkbox"/> 2B <input type="checkbox"/> AUTHORIZED BY CHARTERER REP. <u>Bill Tarion</u> HOURS FOR DAY <u>3.8</u> " MONTH <u>6.0</u> " CONTRACT <u>198.6</u>						

FLIGHT REPORT

TRANSWEST HELICOPTERS (1965) LTD.
2792 NORLAND AVE., BURNABY, B.C. V5B 3A6

04083

CHARTERER GREAT PLAINS DATE 7/26/75
ADDRESS 736 8TH AVE SW CALGARY ALBERTA A/C CF - BUH
PILOT SIGNATURE Michael Wilson BASE MARGARET Rk FUEL CUST TW

OPERATION REMARKS	PASS	TAKE OFF	LAND	WT OF CARGO	HOURS	MIN.
LAURA AND BUH CLAIMS (5308)					1	4

TYPE OF CONTRACT 1 2A 2B AUTHORIZED BY CHARTERER REP. Bill Larion HOURS FOR DAY 1.4
OTHER _____ " MONTH 22.9
" CONTRACT 215.5

FLIGHT REPORT

TRANSWEST HELICOPTERS (1965) LTD.
2792 NORLAND AVE., BURNABY, B.C. V5B 3A6

04080

CHARTERER GREAT PLAINS DATE 7/24/75
ADDRESS 736 8TH AVE SW CALGARY ALBERTA A/C CF - BULL
PILOT SIGNATURE Michael Wilson BASE MARGARET Rk FUEL CUST TW

OPERATION REMARKS	PASS	TAKE OFF	LAND	WT OF CARGO	HOURS	MIN.
KEN CLAIM (5310)					0	5
KEN (5310)					0	7
KEN (5310)					0	5

TYPE OF CONTRACT 1 2A 2B AUTHORIZED BY CHARTERER REP. Bill Larion HOURS FOR DAY 1.9
OTHER _____ " MONTH 19.2
" CONTRACT 211.8

FLIGHT REPORT

TRANSWEST HELICOPTERS (1965) LTD.
2792 NORLAND AVE., BURNABY, B.C. V5B 3A6

04084

CHARTERER GREAT PLAINS DATE 7/27/75
ADDRESS 736 8TH AVE SW CALGARY ALBERTA A/C CF - BUH
PILOT SIGNATURE Michael Wilson BASE MARGARET Rk FUEL CUST TW

OPERATION REMARKS	PASS	TAKE OFF	LAND	WT OF CARGO	HOURS	MIN.
JANE CLAIMS (5308)					2	8
REV " (5308)					0	6
BUH " (5308)					0	9

TYPE OF CONTRACT 1 2A 2B AUTHORIZED BY CHARTERER REP. Bill Larion HOURS FOR DAY 4.3
OTHER _____ " MONTH 27.2
" CONTRACT 219.8

FLIGHT REPORT

TRANSWEST HELICOPTERS (1965) LTD.
2792 NORLAND AVE., BURNABY, B.C. V5B 3A6

04081

CHARTERER GREAT PLAINS DATE 7/25/75
ADDRESS 736 8TH AVE SW CALGARY ALBERTA A/C CF - BUH
PILOT SIGNATURE Michael Wilson BASE MARGARET Rk FUEL CUST TW

OPERATION REMARKS	PASS	TAKE OFF	LAND	WT OF CARGO	HOURS	MIN.
MARGARET Rk TO Mayo (5310)					1	2
Mayo TO MARGARET Rk (5310)					1	1

TYPE OF CONTRACT 1 2A 2B AUTHORIZED BY CHARTERER REP. Bill Larion HOURS FOR DAY 2.3
OTHER _____ " MONTH 21.5
" CONTRACT 214.1

FLIGHT REPORT

TRANSWEST HELICOPTERS (1965) LTD.
2792 NORLAND AVE., BURNABY, B.C. V5B 3A6

04090

CHARTERER GREAT PLAINS DATE 7/31/75
ADDRESS 736 8TH AVE SW CALGARY ALBERTA A/C CF-BUL
PILOT SIGNATURE Michael Hill BASE MARGARET & C FUEL CUST TW

OPERATION REMARKS	PASS	TAKE OFF	LAND	WT OF CARGO	HOURS	MIN.
OGILVIE RIVER (5310)					5	5
TYPE OF CONTRACT 1 <input type="checkbox"/> 2A <input type="checkbox"/> 2B <input type="checkbox"/>	AUTHORIZED BY CHARTERER, REP. <u>Bill Tarion</u>		HOURS FOR DAY <u>5.5</u>			
OTHER _____			" MONTH <u>42.3</u>			
			" CONTRACT <u>234.9</u>			

FLIGHT REPORT

TRANSWEST HELICOPTERS (1965) LTD.
2792 NORLAND AVE., BURNABY, B.C. V5B 3A6

04087

CHARTERER GREAT PLAINS DATE 7/29/75
ADDRESS 736 8TH AVE SW CALGARY ALBERTA A/C CF-BUL
PILOT SIGNATURE Michael Hill BASE MARGARET & C FUEL CUST TW

OPERATION REMARKS	PASS	TAKE OFF	LAND	WT OF CARGO	HOURS	MIN.
SNAKE RIVER RECON (5310)					3	4
SLING FUEL FROM LAKE (5310)					0	1
TYPE OF CONTRACT 1 <input type="checkbox"/> 2A <input type="checkbox"/> 2B <input type="checkbox"/>	AUTHORIZED BY CHARTERER, REP. <u>Bill Tarion</u>		HOURS FOR DAY <u>3.5</u>			
OTHER _____			" MONTH <u>33.9</u>			
			" CONTRACT <u>226.5</u>			

FLIGHT REPORT

TRANSWEST HELICOPTERS (1965) LTD.
2792 NORLAND AVE., BURNABY, B.C. V5B 3A6

04089

CHARTERER GREAT PLAINS DATE 7/30/75
ADDRESS 736 8TH AVE SW CALGARY ALBERTA A/C CF-BUL
PILOT SIGNATURE Michael Hill BASE MARGARET & C FUEL CUST TW

OPERATION REMARKS	PASS	TAKE OFF	LAND	WT OF CARGO	HOURS	MIN.
OGILVIE RIVER (5310)					2	9
TYPE OF CONTRACT 1 <input type="checkbox"/> 2A <input type="checkbox"/> 2B <input type="checkbox"/>	AUTHORIZED BY CHARTERER, REP. <u>Bill Tarion</u>		HOURS FOR DAY <u>2.9</u>			
OTHER _____			" MONTH <u>36.8</u>			
			" CONTRACT <u>229.4</u>			

FLIGHT REPORT

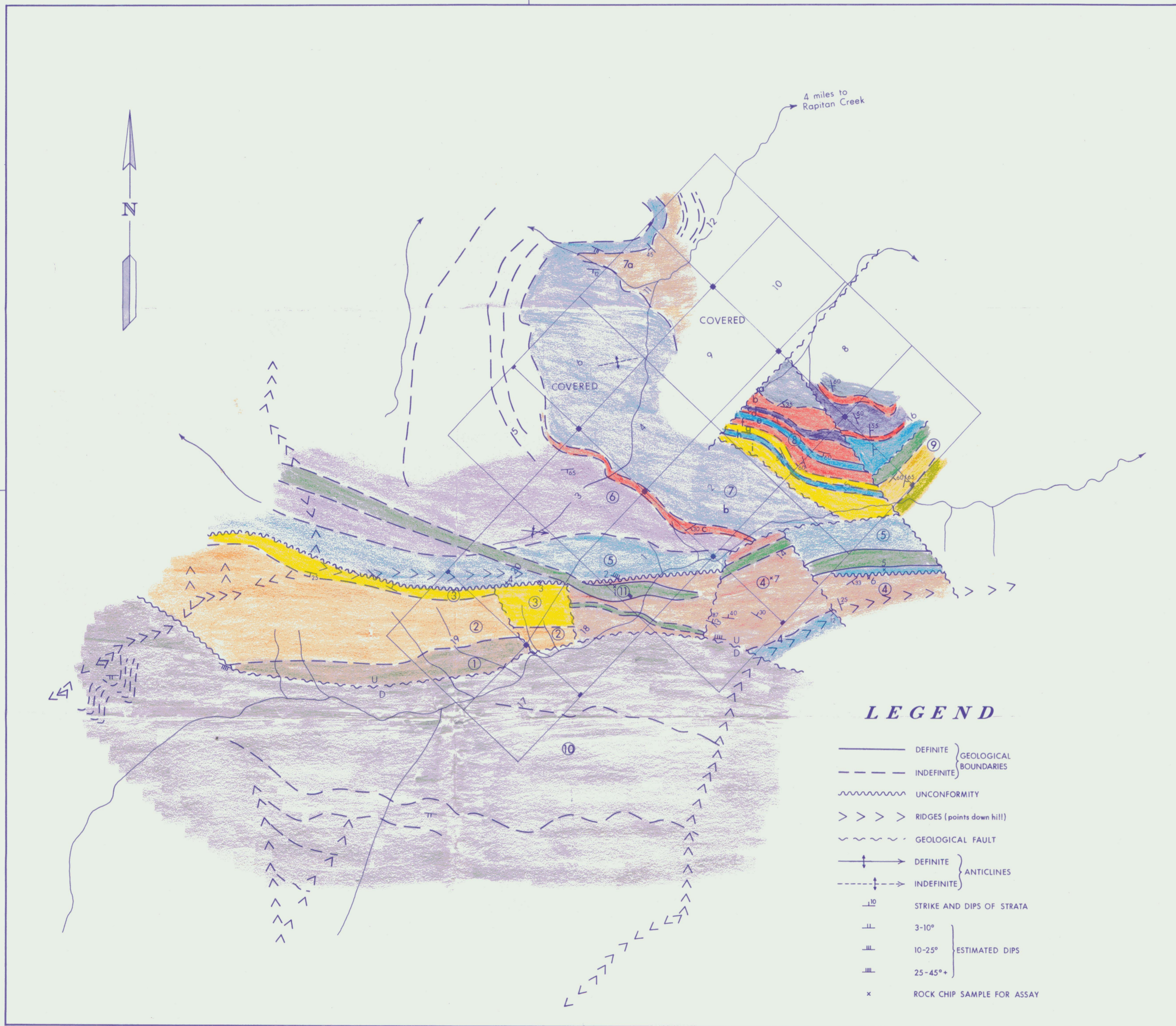
TRANSWEST HELICOPTERS (1965) LTD.
2792 NORLAND AVE., BURNABY, B.C. V5B 3A6

04086

CHARTERER GREAT PLAINS DATE 7/28/75
ADDRESS 736 8TH AVE SW CALGARY ALBERTA A/C CF-BUL
PILOT SIGNATURE Michael Hill BASE MARGARET & C FUEL CUST TW

OPERATION REMARKS	PASS	TAKE OFF	LAND	WT OF CARGO	HOURS	MIN.
SNAKE RIVER RECON (5310)					3	2
TYPE OF CONTRACT 1 <input type="checkbox"/> 2A <input type="checkbox"/> 2B <input type="checkbox"/>	AUTHORIZED BY CHARTERER, REP. <u>Bill Tarion</u>		HOURS FOR DAY <u>3.2</u>			
OTHER _____			" MONTH <u>30.4</u>			
			" CONTRACT <u>223.0</u>			

GEOLOGICAL SUCCESSION




10	ARGILLITE SILTSTONE Phyllitic sheen chloritic in pt. weathers black	KATHERINE GROUP
9c	LIMESTONE	
9b	SANDSTONE, Conglomeratic, buff to mauve	
9a	DOLOMITE, Weathers orange	
8i	QUARTZITE	
8h	LIMESTONE	
8g	QUARTZITE	
8f	ARGILLITE, Rust brn.	
8e	LIMESTONE	
8d	ARGILLITE, Rust brn.	
8c	LIMESTONE	KATHERINE GROUP (D.K. NORRIS, 1975)
8b	ARGILLITE, Rust brn.	
8a	LIMESTONE	
7c	GREYWACKE, Lenticular bdg. shallow wtr.	
7b	LIMESTONE, Dk. gy.	
7a	SILTSTONE SHALE, Lt. brn., intbds.	
6	LIMESTONE, Buff, recessive	
5	LIMESTONE, Dk. gy., S.H. at top	
4	DOLOMITE, Silicic, weathers orange, algal laminites in pt.	
3	QUARTZITE	
2	BOULDER CONGLOMERATE	
1	BLACK SHALE	
IGNEOUS		
11	GABBRO, High % Feldspar chloritized	

LEGEND

- DEFINITE } GEOLOGICAL BOUNDARIES
- - - INDEFINITE }
- ~~~~ UNCONFORMITY
- >>>> RIDGES (points down hill)
- - - - GEOLOGICAL FAULT
- +—+—+ DEFINITE } ANTICLINES
- - -+ - - - INDEFINITE }
- 10 STRIKE AND DIPS OF STRATA
- 11 3-10° } ESTIMATED DIPS
- 12 10-25° }
- 13 25-45°+ }
- x ROCK CHIP SAMPLE FOR ASSAY


PLATE 2



**DEVELOPMENT COMPANY
OF CANADA, LTD.**

YUKON TERRITORY
MACKENZIE PROJECT

YUK CLAIMS
GEOLOGY



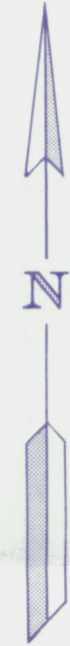
FEET

MAYO M.D.
C. WINTER

N.T.S. : 106-F-4
JUNE 1975

133°55'

4 miles to
Rapitan Creek



65°05'

65°05'



133°55'

PLATE 3



DEVELOPMENT COMPANY
OF CANADA, LTD.

YUKON TERRITORY

MACKENZIE PROJECT

YUK CLAIMS

Zn GEOCHEMISTRY



MAYO M.D.
C. WINTER

N.T.S. : 106-F-4
JUNE 1975

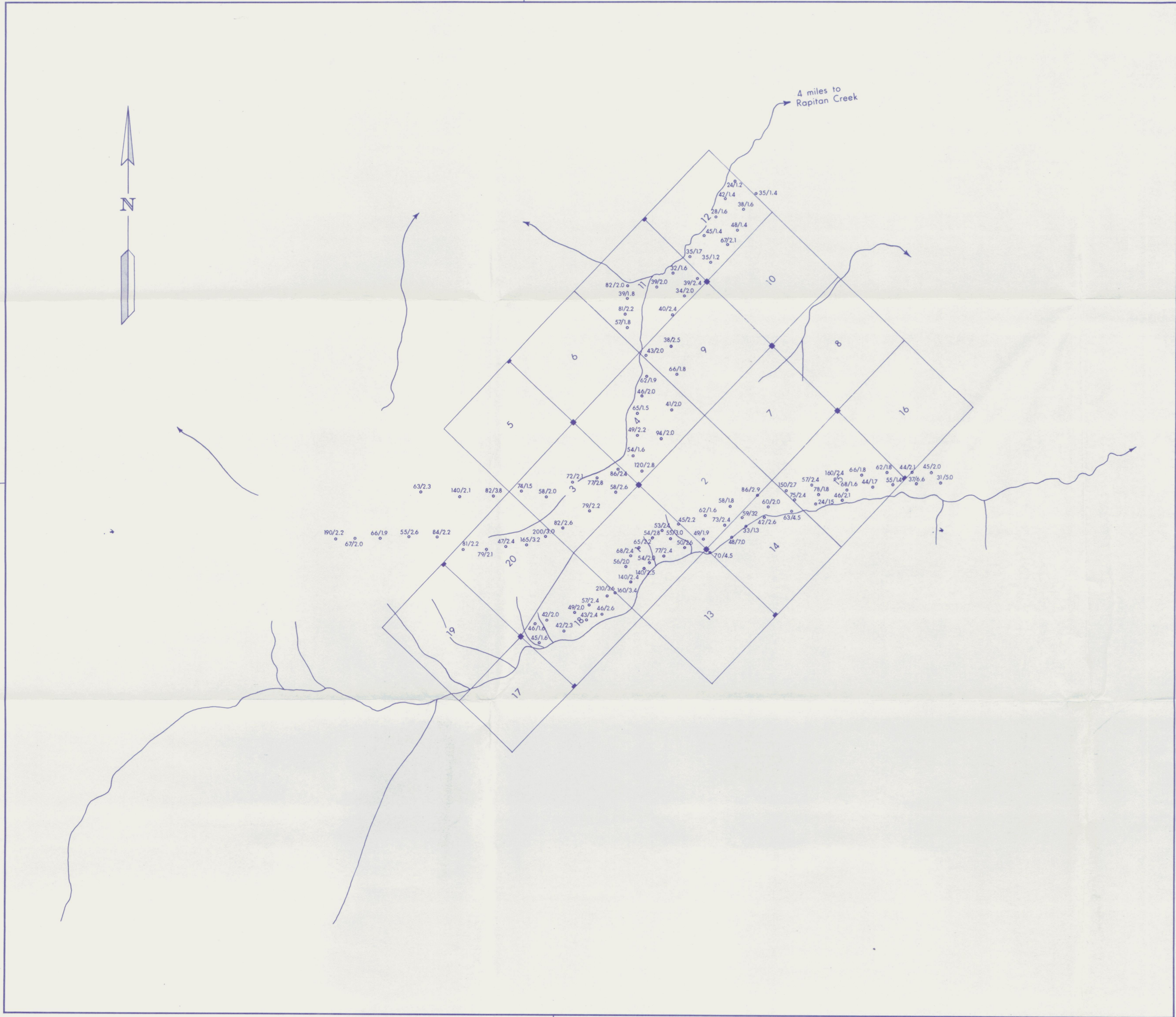
133°55'

4 miles to
Rapitan Creek



65°05'

65°05'



133°55'

PLATE 4



DEVELOPMENT COMPANY
OF CANADA, LTD.

YUKON TERRITORY

MACKENZIE PROJECT

YUK CLAIMS

Pb and Cd GEOCHEMISTRY



MAYO M.D.
C. WINTER

N.T.S.: 106-F-4
JUNE 1975