

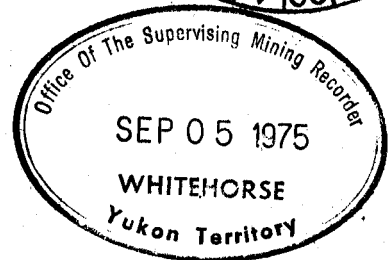


GREAT PLAINS DEVELOPMENT COMPANY OF CANADA, LTD.,

GEOLOGICAL AND GEOCHEMICAL
EVALUATION OF THE YOGI CLAIMS
YUKON TERRITORY

135o44' West Longitude
65o09' North Latitude

May 22 to June 26, 1975.



This report has been examined by the Geological Evaluation Unit and is recommended to the Court of Claims to be considered as representation of work in the amount of

\$ 3360.00

D.B. Craig
Resident Geologist or
~~Resident Mining Engineer~~

Considered as representation work under
Section 53 (4) Yukon Quartz Mining Act.

M.R. Baxter
Supervising Mining Recorder
[Signature]
Per Commissioner of Yukon Territory

N.T.S. 106-E-2

B.D. Farion
P. Geol.

[Signature]

090028

INDEX

A. SUMMARY

B. INTRODUCTION

1. Location
2. Property
3. Field Methods
4. Geography

C. GEOLOGY

1. Lithology
2. Age
3. Structure

D. GEOCHEMISTRY

E. CONCLUSIONS

F. RECOMMENDATIONS

Plates	1	Location Map
	2.	Geology Map
	3	Geochemistry - zinc values
	4	Geochemistry - lead values
	5	Geochemistry - cadmium values

Appendix

- 1 Addresses of Personnel
- 2 Statement of Qualifications
- 3 Assay results

A. SUMMARY

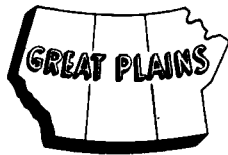
1. Following the recognition of environments favourable to the formation of stratabound lead-zinc deposits, Great Plains conceived of and operated a geochemical reconnaissance program in the Bonnet Plume area of Yukon Territory. The Yogi claims, one of several claim groups staked during the 1974 exploration program, will be the subject of this report.

2. The field crew, assembled to complete assessment work on the claim group, moved to the base camp at Margaret Lake by May 23, 1975.

Personnel included:

Bill Farion	Party Chief
Barry Edmonson	Student Geologist
Colin Winter	Geologist
Janet Helton	Student Geologist
Romulo Santos	Student Geologist
John van der Lee	Geological Assistant
Nigel Lumsden	Geological Assistant
Janet Etzkorn	Cook
Mike Hofuis	Helicopter Pilot
Paul Koovisk	Apprentice Engineer

Transwest Helicopters (1965) Ltd., of Burnaby B.C. supplied a Hughes 500 C helicopter, while Trans North Turbo Air supplied fixed wing support from Mayo. Expediting services were provided by Stirling Expediting Services, Mayo and assaying was performed by Barringer Research of Whitehorse, Yukon.



MACKENZIE PROJECT

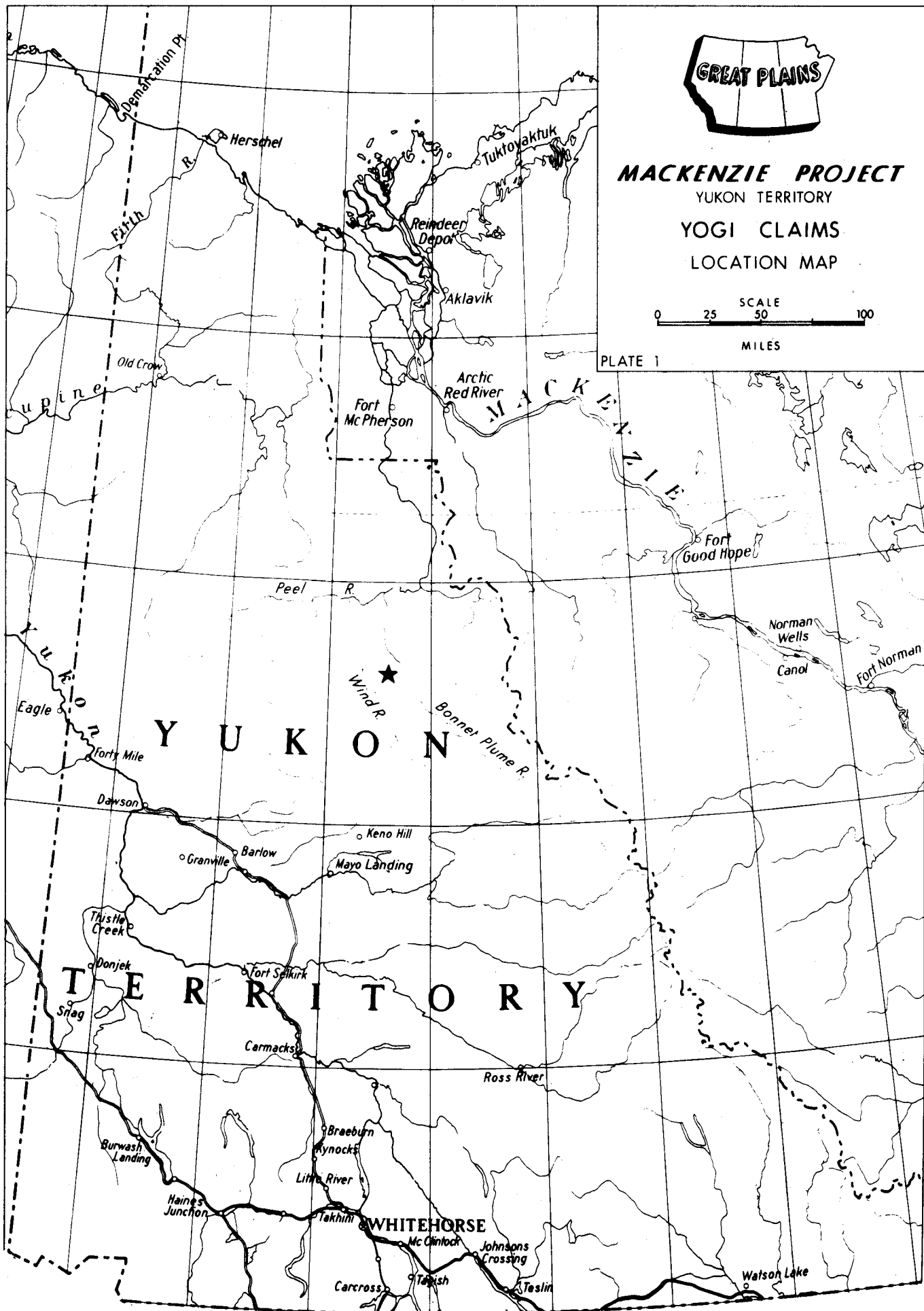
YUKON TERRITORY

YOGI CLAIMS

LOCATION MAP



PLATE 1



B. INTRODUCTION

1. Location

The Yogi claims are located on Illtyd Creek, 15 miles southwest of Margaret Lake. N.T.S. is 106-E-2. Margaret Lake is one of the few lakes in the area on which float planes can operate.

2. Property

The property consists of 16 contiguous mineral claims.

<u>Claims</u>	<u>Grant Numbers</u>
Yogi 1-16	Y95277-Y95292

3. Field Methods

The area was mapped on a scale of 1060 feet \approx 1 inch. A blowup, to 1 inch \approx 1060 feet, was made from a 9" x 9" airphotograph (1" \approx 5280') taken by the National Air Photo Library (Energy, Mines & Resources, Ottawa) and used as a basemap. Use was made of the zinc spot test, a chemical which turns red in contact with the weathering products of zinc sulphides. A cold extractable test for heavy metals was made on each stream sediment sample taken. Soil, stream and rock samples taken were submitted to Barringer Research for analysis.

4. Geography

The claims are situated on a rounded mountain ridge and valley floor. Vegetation consists of alpine shrubs and grasses.

C. GEOLOGY

1. Lithology

The units described are plotted on a geological map at an approximate scale of 1" = 1060', using a blowup of a 1968 National Air Photo Library airphotograph as a base map.

Unit 1

The unit consists of a medium to coarse grained greywacke, with thin platy parting, small scale folding and faulting and has undergone low grade (chloritic) metamorphism.

Unit 2

The unit consists of very fine to fine crystalline orthoquartzite; white in fresh surfaces, white to grey in weathered surface with biotite veinlets altering to chlorite, quartz veins and veinlets, flaggy and with specks of hematite.

Unit 3

The unit consists of siltstones, sandstones and shales, grey in fresh and weathered surfaces, thinly bedded, and platy. Grain size varies from clay particles to coarse grained sands.

Unit 4

The unit consists of a pink to reddish brown conglomerate. Clasts are subangular to subrounded with grain size varying from granules to boulders. The clasts include pink and red quartzite, jasper, quartz and other lithic fragments with a matrix of calcite, silica and feldspar grains and specular hematite mineralization. Specularite and iron content can average 5% to 20%. The unit contains interbeds of medium grained quartzites.

Unit 5

The unit consists of grey, banded and laminated greywacke, slabby, indurate and of variable grain size.

Unit 6

Orthoquartzite consisting of very fine to fine grained white to light grey material. Pyrite cubes, hematite, siderite, specularite malachite and azurite are common.

Unit 7

The unit consists of laminated, grey to greenish brown slabby siltstone.

Unit 8

The unit consists of argillite, dark to medium grey with crystals and blebs of cordierite, platy with some original bedding visible and limonite alteration.

Unit 9 ≡ 10 ≡ 11

The units appear to be similar to Unit 8 but are more recessive due to a higher shale content.

Unit 12

The unit consists of coarsely crystalline dolomite, white and black in fresh surface, orange brown with black bands in weathered surface, bands of chert (approximately 1 cm. thick) which may possibly be algal mats, and wavy laminates, lenticular and in part boudinaged. Andalusite crystals up to 3 cm. were found in bedding surfaces.

Unit 13

The unit consists of fine grained quartzite with black and white bands, quartz veins and veinlets, traces of pyrite and undurated.

Unit 14 \cong Unit 6

Unit 15

The unit consists of dark grey to black argillite with a micaceous luster.

Unit 16

The unit consists of a recessive very dark grey shale.

Unit 17 \cong Unit 23

The units consist of recessive argillites which are light grey-brown in fresh surface to orange-brown in weathered surface and contain andalusite.

Unit 18 - The unit consists of thin bedded, grey and brown banded argillite.

Unit 19 \cong Unit 13

Unit 20

The unit consists of medium green siltstones, greasy, chloritic, thin bedded and platy. Small folds and faults on an outcrop scale are visible.

Unit 21 \cong Unit 19 \cong Unit 13

Unit 22

The unit is a recessive black to dark brown shale.

Unit 24

The unit is a medium grained dark grey-green greywacke, poorly sorted, laminated in part and contains chlorite and cordierite.

2. Age

The unit can be tentatively placed in the Hadrynian "Grit Unit" (Blusson, G.S.C. O.F.R. 205). The descriptions of the lithologies are very similar.

3. Structure

The claim group has undergone deformation under pressure which produced small scale folds and faults. The general dip on the northwest

portion of the property is to the northwest at approximately 45 degrees. In the southern claims, folds on the scale of 500 feet are evident. A fault probably separates the monotonous black argillites from the more varied units in the claim group.

D. GEOCHEMISTRY

Soil sampling was done along contours of the ridges using pocket altimeters for elevation control or on the break in slope near the creeks. The samples were taken at 200 foot intervals using Topofil Chain to measure the sampling intervals. Soil development is poor. A black organic layer overlies a variable brown "B" horizon containing fragments which vary from clay size particles to cobbles of parent material.

Analyses were conducted by Barringer Research. Samples were dried, screened to 80 mesh, digested in perchloric acid (HClO₄) and analysed on an atomic absorption unit.

The results generally exhibit background values which probably reflect lithologies. The high values may be significant but are isolated and do not show any trends.

E. CONCLUSIONS

The conglomerate may carry isolated pockets of sphalerite which were picked up on previous samples. The conglomerate unit would have been a suitable host but does not contain significant mineralization besides iron minerals.

F. RECOMMENDATIONS

The work to date should be applied for assessment work. Further work would not be justified at present. The unit may have potential if other similar conglomerates in the area prove to be productive.

STATEMENT OF QUALIFICATIONS

1. I graduated with a Bachelor of Science in Geology from the professional program at the University of Alberta in April, 1971.
2. I have been employed as a geologist with various companies since graduation in 1971.
3. I have been employed as a geologist in the mineral division of Great Plains since August 1972.
4. I applied and was accepted into the Association of Professional Engineers, Geologists and Geophysicists of Alberta in 1973.
5. I have supervised and carried out the work outlined in this report.

Bill Dave Farion
P. Geol.,

Bill Dave Farion

NAMES AND ADDRESSES OF PERSONNEL

Janet Elizabeth Etkorn Cook,
7169 Maureen Crescent,
BURNABY, 2,
British Columbia.

Barry William Edmonson, Student Geologist
2527 - 17th Street N.W.
CALGARY,
Alberta.

John Donald Gregory Van der Lee Geological Assistant.
8212-10th Street S.W.
CALGARY,
Alberta.

Romulo D. Santos Student Geologist
3903 - 14th Avenue N.E.
CALGARY,
Alberta.

Janet Lenore Helton Student Geologist
947 Canfield Crescent S.W.
CALGARY,
Alberta.

Colin Quinton Winter Geologist (B.A. Oxon)
'Greenways',
37 Keniworth Road,
Ealing,
LONDON, W55PA,
England.

Nigel Lumsden, Geological Assistant
c/o Great Plains Development
Company of Canada, Ltd.,
736 - 8th Avenue S.W.
CALGARY,
Alberta.

Bill Dave Farion, Party Chief
#84 210-86th Avenue S.E.
CALGARY,
Alberta.

Mike Hofuis Transwest Helicopters
Paul Koovisk Burnaby, B.C.

yoji claims



BARRINGER RESEARCH Limited

304 Carlingview Drive
Rexdale, Toronto, Canada
Phone: 677-2491
Cable: Baresearch

Geochemical
Laboratory
Report

DATE

June 24th, 1975

Great Plains Development of Canada
736-8th Avenue S.W.
Calgary, Alberta
Attention: B. Farrion

REPORT NUMBER 7-A

SAMPLE NUMBER	HC10 ₄ Pb ppm	HC10 ₄ Zn ppm	HC10 ₄ Cd ppm		Sample No.	HC10 ₄ Pb ppm	HC10 ₄ Zn ppm	HC10 ₄ Cd ppm
RS-5-6-8-1	25	51	1.0		RS-5-6-8-21	26	37	1.1
2	26	160	1.0		22	26	56	1.2
3	24	39	.9		23	25	38	1.3
4	30	130	1.3		24	27	43	1.4
5	26	52	1.1		25	29	70	1.6
6	18	19	.8		26	30	72	1.7
7	28	57	1.2		27	23	29	1.3
8	26	54	1.2		28	29	82	1.4
9	23	23	1.0		29	190	560	3.3
10	23	37	1.5		30	45	135	1.6
11	32	57	1.4		31	34	80	1.4
12	36	220	1.2		32	41	190	1.7
13	80	235	2.2		33	70	205	1.5
14	51	195	1.4		34	42	155	1.8
15	38	59	1.6		35	24	48	1.3
16	28	56	1.3		36	74	140	1.2
17	27	36	1.2		37	15	21	.8
18	95	450	1.7		38	27	61	1.2
19	48	165	1.4		39	38	155	1.3
20	56	185	1.6		RS-5-6-7-1	33	180	1.4

Sample NO.	HClO ₄ Pb ppm	HClO ₄ Zn ppm	HClO ₄ Cd ppm			Sample No.	HClO ₄ Pb ppm	HClO ₄ Zn ppm	HClO ₄ Cd ppm
RS-5-6-9-65	52	56	1.2			JLH-5-6-9-11	39	52	1.2
66	31	84	1.2			12	29	37	1.0
67	30	22	1.0			13	27	53	1.4
68	26	29	1.6			14	32	32	1.4
69	30	74	1.5			15	14	29	1.0
70	24	26	1.2			16	24	45	1.6
71	22	37	1.4			17	27	52	1.6
72	31	63	1.4			18	30	44	1.6
73	69	91	2.0			19	28	43	1.6
74	34	39	1.2			20	20	25	1.0
75	19	12	1.0			JLH-5-6-8-1	72	160	1.4
76	37	84	1.2			2	29	45	1.4
77	49	44	1.3			3	21	24	1.0
78	22	41	1.2			4	22	47	1.4
79	28	61	1.5			5	26	53	1.2
80	66	93	1.4			6	21	19	1.2
81	27	69	1.2			7	25	47	1.1
JLH-5-6-9-1	13	27	1.0			8	23	34	1.2
2	23	49	1.4			9	25	54	1.0
3	26	29	1.2			10	33	53	1.0
4	18	33	1.3			11	38	59	1.4
5	22	34	1.2			12	77	125	1.2
6	25	45	1.2			13	31	89	1.0
7	37	69	1.5			14	19	25	.8
8	27	66	1.5			15	23	42	1.0
9	27	24	1.4			16	22	69	1.2
10	28	44	1.4						

Sample No.	HClO ₄ Pb ppm	HClO ₄ Zn ppm	HClO ₄ Cd ppm			Sample No.	HClO ₄ Pb ppm	HClO ₄ Zn ppm	HClO ₄ Cd ppm
JLH-5-6-8-17	36	72	1.2			BE-5-6-7-24	28	74	1.0
18	30	46	.9			25	29	68	1.0
19	26	54	1.2			26	48	140	1.2
20	45	48	1.1			27	22	22	1.1
BE-5-6-7-1	29	50	.7						
2	22	40	.8						
3	31	49	1.0						
4	28	33	.8						
5	23	41	.7						
6	20	40	1.2						
7	11	17	1.1						
8	31	45	1.0						
9	22	42	1.1						
10	16	30	.6						
11	23	44	.7						
12	18	44	.8						
13	16	30	.8						
14	33	145	1.1						
15	36	130	.8						
16	25	265	1.4						
17	19	160	1.1						
18	19	140	1.4						
19	35	180	1.6						
20	66	310	1.8						
21	58	565	1.6						
22	145	770	1.6						

EXPENDITURES

YOGI CLAIMS

1-16

ASSAYING	\$ 471.15
FIXED WING	\$ 434.72
TRAVEL AND FREIGHT	\$ 96.80
OFFICE SUPPLIES	\$ 190.56
CAMP SUPPLIES	\$ 674.40
SALARIES	\$1,141.12
HELICOPTER	\$1,196.00
	<hr/>
	\$4,204.75
	=====

Camp Supplies

	AFF	5308	1 Salary	2 Fixed Wing	3 Travel Freight	4 Office Supplies	5 Camp Supplies	6 Helicopter	7 Kitchen	8	9	10	11	12
1	Feb 14	Energy Mines + Res	Mosaics				237.00							
2	25-28	TNTA fuel haul	35%	1463.00										
3	25-27	Travelodge	50%		34.25									
4	Mar 14	Maps	Recon. Inv.			14.00								
5	6	TNTA fuel haul	35%	141										
6	Feb 28	TNTA		1470										
7	Mar 5	TNTA		122.85										
8	7	TNTA		245.70										
9	7	GSC				69.00								
10	Feb 20	FUEL JP4	35%				1842.27							
11	Mar 27	TNTA		290.16										
12	Apr 2	BCI 12 topolines	50%			25.65								
13	Mar 12	Energy Mines + Res	5 photos	50%		31.00								
14	Mar 18	"	"	10 air photos	50%	27.00								
15	27	TNTA	35%	118.27										
16	Apr 30	NW Survey	Logosap			50.096								
17	Apr 30	Ribton					79.95							
18	May 5	Car freightways	35%		45.57									
19	19	Air fares			399.35									
20	May 30-23	TNTA		564.20										
21	15	Caldraft	drafting supplies			31.15								
22	20	Danny's	camp supplies				337.26							
23	23	Chateau	Maps		49.00									
24	23	Danny's	camp supplies				219.21							
25	16	Library	Research report			3.75								
26	26	Atlas	Copes plunger parts				258.85							
27	14	Dominion	Aluminum Tent				489.88							
28	22	Air fare	R Santos	50%	65.50									
29		C.P. Air	Northward freight		89.64									
30		C.P. Air	"		10.00									
31	29	Yuban	explosives crimpers		8.00		5.00							
32	30	Freight			8.00		5.00							
33	30	Hooper	D. Myers Walter			4.50								
34	30	Xerox	Whitepass				27.48							
35	June 3	Danny's	camp supplies				118.27							
36				2959.89	701.31	944.01	3377.77							
37														
38														
39														
40														

7992.91

Camp Supplies

	Salaries	Fixed Wages	Travel Freight	Office Supplies	Camp Supplies	
1 May Total Forward		2959.88	701.31	944.01	3377.77	7982.97
2 May 26 International Service Supplies					71.92	
3 May 22 Yukon Explosives					137.34	
4 May 20 CNTU Radio license				7.00		
5 June 4 Lumber Beaver @ 155 1/2 GP		100.75				
6 June 6 Lamm's Dept Store camp supplies					443.03	
7 June 6 Northward freight			10.00			
8 May Chopper rental 1 day @ 5.00					5.00	
9 June 5 Horwood's office supply				41.85		
10 May Sterling Expediting				202.50		
11 June 14 Lamm's camp supplies					605.51	
12 June 14 TNTA Other		227.50				
13 May 22 Canadian Propane					11.78	
14 May 16 Freight			20.82			
15 May 13 Cheaney Hardware					6.97	
16 May 16 BCT chronometers, hand lenses				78.75		
17 May 23 White Pass kerosene & 20 gal oil					41.62	
18 June 20 TNTA OTTER 1/2 GP 1/2 ANARCO		227.50				
19 June 20 Procure					292.96	
20 June 15 Sterling Expediting 50%				167.28		
21 June 27 Lamm's Dept Store					214.83	
22 June 16 "					39.04	
23 June 27 Northward Ticket C. Winter			1.71			
24 May 16 BCT chronometers, hand lenses						
25 June 11 Cheaney - chemicals				445.61		
26 June 13 Heaton 2 metal boxes					22.60	
27 May 5 Hangers metal box, wire, rope					126.60	
28 June 10 BCT chronometer				50.40		
29 June 20 Lamm's 50%					320.99	
30 July 2 Hangers cot & frame					38.95	
31 July 7 Fuel 5 lll @ 63		455			315.00	
32 July 7 Other trip		455				
33 July 28 Lumber Beaver trip		351				
34 July 28 Whiteman 4 lll fuel					25.2	1310.10
35						
36						
37						
38						
39						
40						

Forwarded with
June 26

Barringer Assay

	1	2	3	4	5	6	7	8	9	10	11	12
Barringer Assay Samples	5310	Ken	Ber	Jeanette	Dunly	Yogi	Zuk					
May 27 9 rock												
28 2 rock			590									
28				295								
28			295									
29				1180								
29						590						
June 4/75			3570									
June 7 trench				590								
June 10							590					
10							1180					
June 26 BE soil				1760								
Ken Cl soil			9680									
Jeanette JH 55-29					11							
June 1			1760									
May 31 JH					2420							
JU			4180									
BE rock			1180									
JU-6-2			1980									
JH 5-6-2 16 samples					3520							
JV 5-6 + NL 5-6-8-9				16720								
RS 5-6-9								23540				
								14740				
					7700		4620					
			5940									
				8800								
25 element			4200									
			5					2640				
								1770				
										8850		
25 element			54									
slt			3740									
slt			1166									
25 element			72									
			295									
June 14/75												
Total June 19	43355	18315	24345	14740	5210	47115		5060		13910		

Barringer Assay Cost.

	1	2	3	4	5	6	7	8	9	10	11	12
	5310	5308	5308	5308	5308	Yagi	5308	5308	5308			
		Ken	Ben	Yvette	Windy		YUK	JANE	Hat			
Totals to June 19/75	433.75	183.15	293.45	147.90	52.10	471.15	139.10					
24 soil samples June 20		52.80										
58 " " June 20								127.60				
85 " " " 22						193.60						
73 " " " 24												
		235.95	293.45	160.60	245.70	471.15	266.70					
June 26 (16, 3, 7) 31 samples	68.20											
June 29 35 samples											7.7	
June 26 15 soil samples											33	
June 29 " silt	24.20										38	
July 4											138	
July 4	143.00		22.00									
July 4	7											
July 7	70.90											
July 7 (changed from 5308 to 5310)	52.89											
" " "	1.70											
July 11 27 silt	87.75											
July 11 11 + 14 "	72.50											
" " 3 rock	15.00											
	1618.90	235.95	315.45	308.00	245.70	471.15	266.70	198.00	5040.95			For claims only
July 15 13 rock	50.70											
July 16 9 rock + 116 soil			368.35									
July 11 soil + rock samples	191.10											
July 16 #30	187.60											
July 20 #31											206.50	
July 21 32											142.10	
July 25 33	273.10											
July 25 34											46.40	72.50
July 25 34												20.30
July 25 35												18.00
	232.140	235.95	663.80	308	245.70	471.15	266.70	198.00	252.80		252.90	

June Personnel

	1	2	3	4	5	6	7	8	9	10	11	12	
June Personnel 530's Salaries	5310	5308	KEN	BEV	JEANETTE	WINDY	YUGI	YUK	JANE	Cook 530C	Cook 5310	5310	5308
1	7	120.00			80		80.00			20	20	280.00	2620
2	7	120.00			80		80.00			20	20	260	2800
3			80		120		80.00			40		3120	
4		40.00	240							40		2680	3400
5			200		40		40			40		3720	
6		120.00			80		80			20	20	280	3900
7				120			160			40		4220	
8			40	80			160			40.00		4540	
9		40		80			160			40.00		2860	4820
10				120			160			40.00		5140	
11		40		80	40		120			40.00		2980	5420
12		280									40.00	3220	
13		160							120	20	20	3400	5560
14		160							120	20	20	3580	5700
15		160		40			40	40		20	20	3760	5840
16		240						40			40	4040	5880
17		200						80			40	4280	5960
18		160						120			40	4480	6060
19		160	40					80		40		4640	6200
20		200		20	80	80	40	40		40		4880	6560
21		200				80					40	4880	6560
22		200				80					40	5160	6720
23		40			80						40	5400	6800
24		200							120		40	5440	7000
25		160						40			40	5680	7040
26		160							80		40	5880	7120
27		160							80		40	6080	7200
28		160							80		40	6280	7280
29		240							80		40	6480	7360
30											40	6560	

July Personnel

	1	2	3	4	5	6	7	8	9	10	11	12
July Personnel	5310	5308							5310	5308	Total	Total
		Ken	Ben	Jeanette	Windy	Yogi	Yuk	Jane	Cook	Cook	5310	5308
											#6560	#7360
1	240								40		6940	
2			240							40	7080	7640
3	160		80						40		7040	
4	240								40		7320	
5	200								40		7560	
6	200								40		7800	
7	200								40		8040	
8	200								40		8280	
9	200								40		8520	
10	200								40		8760	
11	315								40		9115	
12	160		115			40			40		9315	9795
13	200						115		40		9555	9910
14	200								40		9795	8025
15	40		200						40		9875	8225
16	SWITCHED TO NEW SHEET 16+											
17												
18												
19												
20												
21												
22												
23												
24												
25												
26												
27												
28												
29												
30												
31												
32												
33												
34												
35												
36												
37												
38												
39												
40												

Slats Ch mon + CW SLATSK

SWITCHED TO NEW SHEET 16+

JULY PERSONEL AFTER JULY 16

	1	2	3	4	5	6	7	8	9	10	11	12
	5310	A BEV	SLATS	LAURA	BVH	JANE	YUK	YOGI			5310	5308
1												
2												
3												
4												
5												
6												
7												
8												
9												
10												
11												
12												
13												
14				115.00								
15											9915	8225
16		40	80	80	80						9915	8465
17		240	40								10155	8505
18				280								9785
19		80				40	120				10235	8745
20				120	120							9185
21			120	120								9725
22		160								80	10395	9505
23		40	40			160					10555	9705
24		160				80					10595	9795
25		240									10835	
26		80			200						10875	9945
27		80				160					10955	10145
28		270									11195	
29		240									11435	
30		240									11675	
31		240									11915	
32												
33												
34												
35												
36												
37												
38												
39												
40												

Cook's salary in leave or leave after 16

MOM + CW

May Helicopter

	1	2	3	4	5	6	7	8	9	10	11	12
May Helicopter as applied to claims	5310	5309 Kon	Ben	Janette	Andy	Yogi	Yuk	General				
1												
2												
3												
4												
5												
6												
7												
8												
9												
10												
11												
12												
13												
14												
15												
16												
17												
18												
19												
20		276										
21										230		
22		437										
23		368										
24		115										
25		322	46	184							253	
26		736		207								
27				230					299			
28			253	322								
29			46	46	207		207					
30		297.50									287.50	
31		128	161		115							
32		2679.50	460	989	322		207	299			770.50	
33												
34											3047.50	Total Claims
35												
36											5727.00	Total Contract for May
37												
38												
39												
40												

June Helicopter

	1	2	3	4	5	6	7	8	9	10	Totals	Total	
June Helicopter	5310	5308 Ken	Ben	Jeanette	Vindy	Yogi	Yak	Joni			5310	5309	
1	230.00			149.50	149.50						Carricktown	2699.50	3097.50
2	460			138	138								
3	184			23	23								
4	115	322											
5		391											
6	713			115	115								
7			299				230						
8	437	115					216						
9	529		115				184						
10	690		161				207						
11													
12	1495												
13	460												
14	483						322						
15	391						161						
16	1012												
17	1679							253			8378	3887	
18	460							230			11577.50	6934.50	
19	529	12650						126.50					
20											12566.50	7417.50	
21	134										13302.50	7624.50	
22	726					207					13647.50	7508.50	
23	345					184					14988.50	8015.50	
24	1311			207							15878.50	8496.50	
25	736			115						36.8	17304.50	8659.50	
26	1426									16.1	17649.50	8781.50	
27	345									322	18569.50	9694.50	
28	820									7	19889.50	10016.50	
29	920									713	19211.50	10660.50	
30	320									322			
31	322									644			

add
1/24

July Helicopter after July 15

	1	2	3	4	5	6	7	8	9	10	11	12
	5310	5308 Bew	Slats	Rama	BUH	YUK	YOGI	JANE			5310	5308
1												
2												
3												
4												
5												
6												
7												
8												
9												
10												
11												
12												
13												
14												
15												
16		575		276							31475	12224
17		23	46		161						31498	12431
18					782							13215
19		276					230				31774	13443
20					545	276	200					14317
21			115		276							14915
22		1012			276			115			32980	15030
23		207	138		460						32993	15628
24		391									33284	
25		529									33915	
26						322						15950
27			138		207			644				16939
28		736	138								34649	
29		805									35454	
30		667									36121	
31		1265									37386	
32												
33												
34												
35												
36												
37												
38												
39												
40												

FLIGHT REPORT

TRANSWEST HELICOPTERS (1965) LTD.
2792 NORLAND AVE., BURNABY, B.C. V5B 3A6

04005

CHARTERER GREAT PLAINS DATE 5/23/75
ADDRESS _____ A/C CF - DNV
PILOT SIGNATURE Michael Hines BASE MARGARET LK FUEL CUST TW

OPERATION REMARKS	PASS	TAKE OFF	LAND	WT OF CARGO	HOURS	MIN.
KIWE LAKE 5310					0	4
SLING SUPPLIES FROM LAKE 5310					1	2
30 GAL FUEL USED						
TYPE OF CONTRACT 1 <input type="checkbox"/> 2A <input type="checkbox"/> 2B <input type="checkbox"/> OTHER _____						
AUTHORIZED BY CHARTERER REP. <u>Bill Jarvis</u>			HOURS FOR DAY <u>1.6</u> " MONTH <u>5.7</u> " CONTRACT _____			

FLIGHT REPORT

TRANSWEST HELICOPTERS (1965) LTD.
2792 NORLAND AVE., BURNABY, B.C. V5B 3A6

04003

CHARTERER GREAT PLAINS DATE 5/21/75
ADDRESS _____ A/C CF - DNV
PILOT SIGNATURE Michael Hines BASE MARGARET LK FUEL CUST TW

OPERATION REMARKS	PASS	TAKE OFF	LAND	WT OF CARGO	HOURS	MIN.
SLING FUEL FROM LAKE 5308					0	8
SUPPLIES FROM KIWE LAKE 5308					0	2
20 GAL FUEL USED						
TYPE OF CONTRACT 1 <input type="checkbox"/> 2A <input type="checkbox"/> 2B <input type="checkbox"/> OTHER _____						
AUTHORIZED BY CHARTERER REP. <u>Bill Jarvis</u>			HOURS FOR DAY <u>1.0</u> " MONTH <u>2.2</u> " CONTRACT _____			

FLIGHT REPORT

TRANSWEST HELICOPTERS (1965) LTD.
2792 NORLAND AVE., BURNABY, B.C. V5B 3A6

04004

CHARTERER GREAT PLAINS DATE 5/22/75
ADDRESS _____ A/C CF - DNV
PILOT SIGNATURE Michael Hines BASE MARGARET LK FUEL CUST TW

OPERATION REMARKS	PASS	TAKE OFF	LAND	WT OF CARGO	HOURS	MIN.
SLING SUPPLIES FROM LAKE 5310					1	9
38 GAL FUEL						
TYPE OF CONTRACT 1 <input type="checkbox"/> 2A <input type="checkbox"/> 2B <input type="checkbox"/> OTHER _____						
AUTHORIZED BY CHARTERER REP. <u>Bill Jarvis</u>			HOURS FOR DAY <u>1.9</u> " MONTH <u>4.1</u> " CONTRACT _____			

FLIGHT REPORT

TRANSWEST HELICOPTERS (1965) LTD.
2792 NORLAND AVE., BURNABY, B.C. V5B 3A6

Mark Kingie f04002

CHARTERER GREAT PLAINS DATE 5/20/75
ADDRESS _____ A/C CF - DNV
PILOT SIGNATURE Michael Hines BASE MARGARET LK FUEL CUST TW

OPERATION REMARKS	PASS	TAKE OFF	LAND	WT OF CARGO	HOURS	MIN.
FERRY FLT FROM MAYO TO MARGARET LAKE 5310					1	2
TYPE OF CONTRACT 1 <input type="checkbox"/> 2A <input type="checkbox"/> 2B <input type="checkbox"/> OTHER _____						
AUTHORIZED BY CHARTERER REP. <u>Bill Jarvis</u>			HOURS FOR DAY <u>1.2</u> " MONTH _____ " CONTRACT _____			

FLIGHT REPORT
TRANSWEST HELICOPTERS (1965) LTD.
 2792 NORLAND AVE., BURNABY, B.C. V5B 3A6

04015

CHARTERER GREAT PLAINS DATE 6/1/75
 ADDRESS 736 8TH AVE SW CALGARY ALBERTA A/C CF - DNV
 PILOT SIGNATURE Michael Hill BASE MARGARET R FUEL CUST TW

OPERATION REMARKS	PASS	TAKE OFF	LAND	WT OF CARGO	HOURS	MIN.
JEANETTE, WINDY 5308					2	3
WIND RIVER 5310					1	0

TYPE OF CONTRACT 1 2A 2B AUTHORIZED BY CHARTERER, REP. Bill Jarvis HOURS FOR DAY 2.3
 OTHER _____ " MONTH 27.2
 " CONTRACT _____

FLIGHT REPORT
TRANSWEST HELICOPTERS (1965) LTD.
 2792 NORLAND AVE., BURNABY, B.C. V5B 3A6

04017

CHARTERER GREAT PLAINS DATE 6/3/75
 ADDRESS 736 8TH AVE SW CALGARY ALBERTA A/C CF - DNV
 PILOT SIGNATURE Michael Hill BASE MARGARET R FUEL CUST TW

OPERATION REMARKS	PASS	TAKE OFF	LAND	WT OF CARGO	HOURS	MIN.
WIND RIVER (RTN, WEATHER) 5310					0	3
JEANETTE, WINDY (RTN, WEATHER) 5308					0	2
WIND RIVER (RTN WEATHER) 5310					0	5

TYPE OF CONTRACT 1 2A 2B AUTHORIZED BY CHARTERER, REP. Bill Jarvis HOURS FOR DAY 1.0
 OTHER _____ " MONTH 31.1
 " CONTRACT _____

FLIGHT REPORT
TRANSWEST HELICOPTERS (1965) LTD.
 2792 NORLAND AVE., BURNABY, B.C. V5B 3A6

04016

CHARTERER GREAT PLAINS DATE 6/2/75
 ADDRESS 736 8TH AVE SW CALGARY ALBERTA A/C CF - DNV
 PILOT SIGNATURE Michael Hill BASE MARGARET R FUEL CUST TW

OPERATION REMARKS	PASS	TAKE OFF	LAND	WT OF CARGO	HOURS	MIN.
WIND RIVER 5310					2	0
JEANETTE AND WINDY 5308					1	2

TYPE OF CONTRACT 1 2A 2B AUTHORIZED BY CHARTERER, REP. Bill Jarvis HOURS FOR DAY 3.2
 OTHER _____ " MONTH 30.4
 " CONTRACT _____

FLIGHT REPORT
TRANSWEST HELICOPTERS (1965) LTD.
 2792 NORLAND AVE., BURNABY, B.C. V5B 3A6

04018

CHARTERER GREAT PLAINS DATE 6/4/75
 ADDRESS 736 8TH AVE SW CALGARY ALBERTA A/C CF - DNV
 PILOT SIGNATURE Michael Hill BASE MARGARET R FUEL CUST TW

OPERATION REMARKS	PASS	TAKE OFF	LAND	WT OF CARGO	HOURS	MIN.
KEN CLAIMS 5308					1	4
SLING BARRELS FROM OLD CAMP SITE 5310					0	5

TYPE OF CONTRACT 1 2A 2B AUTHORIZED BY CHARTERER, REP. Bill Jarvis HOURS FOR DAY 1.9
 OTHER _____ " MONTH 33.3
 " CONTRACT _____

FLIGHT REPORT
TRANSWEST HELICOPTERS (1965) LTD.
 2792 NORLAND AVE., BURNABY, B.C. V5B 3A6

04024

CHARTERER GREAT PLAINS DATE 6/8/75
 ADDRESS 736 8TH AVE SW CALGARY, ALBERTA A/C CF-DNU
 PILOT SIGNATURE Michael Klein BASE MARGARET RIC FUEL CUST TW

OPERATION REMARKS	PASS	TAKE OFF	LAND	WT OF CARGO	HOURS	MIN.
REV CLAIMS 5308					0	8
KEN CLAIMS 5308					0	5
REV CLAIMS 5308					0	4
WIND RIVER 5310					1	9
TYPE OF CONTRACT 1 <input type="checkbox"/> 2A <input type="checkbox"/> 2B <input type="checkbox"/> OTHER _____						
AUTHORIZED BY CHARTERER REP <i>Bill Janion</i>			HOURS FOR DAY <u>3.6</u> " MONTH <u>45.0</u> " CONTRACT _____			

FLIGHT REPORT
TRANSWEST HELICOPTERS (1965) LTD.
 2792 NORLAND AVE., BURNABY, B.C. V5B 3A6

04020

CHARTERER GREAT PLAINS DATE 6/5/75
 ADDRESS 736 8TH AVE SW CALGARY, ALBERTA A/C CF-DNU
 PILOT SIGNATURE Michael Klein BASE MARGARET RIC FUEL CUST TW

OPERATION REMARKS	PASS	TAKE OFF	LAND	WT OF CARGO	HOURS	MIN.
KEN CLAIMS 5308					1	7
TYPE OF CONTRACT 1 <input type="checkbox"/> 2A <input type="checkbox"/> 2B <input type="checkbox"/> OTHER _____						
AUTHORIZED BY CHARTERER REP <i>Bill Janion</i>			HOURS FOR DAY <u>1.7</u> " MONTH <u>35.0</u> " CONTRACT _____			

FLIGHT REPORT
TRANSWEST HELICOPTERS (1965) LTD.
 2792 NORLAND AVE., BURNABY, B.C. V5B 3A6

04023

CHARTERER GREAT PLAINS DATE 6/7/75
 ADDRESS 736 8TH AVE SW CALGARY, ALBERTA A/C CF-DNU
 PILOT SIGNATURE Michael Klein BASE MARGARET RIC FUEL CUST TW

OPERATION REMARKS	PASS	TAKE OFF	LAND	WT OF CARGO	HOURS	MIN.
Yogi CLAIM 5308					1	0
REV CLAIM 5308					1	3
TYPE OF CONTRACT 1 <input type="checkbox"/> 2A <input type="checkbox"/> 2B <input type="checkbox"/> OTHER _____						
AUTHORIZED BY CHARTERER REP <i>Bill Janion</i>			HOURS FOR DAY <u>2.3</u> " MONTH <u>41.4</u> " CONTRACT _____			

FLIGHT REPORT
TRANSWEST HELICOPTERS (1965) LTD.
 2792 NORLAND AVE., BURNABY, B.C. V5B 3A6

04022

CHARTERER GREAT PLAINS DATE 6/6/75
 ADDRESS 736 8TH AVE SW CALGARY, ALBERTA A/C CF-DNU
 PILOT SIGNATURE Michael Klein BASE MARGARET RIC FUEL CUST TW

OPERATION REMARKS	PASS	TAKE OFF	LAND	WT OF CARGO	HOURS	MIN.
JEANETTE & WINDY 5308					1	0
WIND RIVER 5310					1	6
SNAKE RIVER 5310					1	5
TYPE OF CONTRACT 1 <input type="checkbox"/> 2A <input type="checkbox"/> 2B <input type="checkbox"/> OTHER _____						
AUTHORIZED BY CHARTERER REP <i>Bill Janion</i>			HOURS FOR DAY <u>4.1</u> " MONTH <u>39.1</u> " CONTRACT _____			

FLIGHT REPORT
TRANSWEST HELICOPTERS (1965) LTD.
 2792 NORLAND AVE., BURNABY, B.C. V5B 3A6

04031

CHARTERER GREAT PLAINS DATE 6/13/75
 ADDRESS 736 8TH AVE SW CALGARY ALBERTA A/C CF - DNV
 PILOT SIGNATURE Michael Klein BASE MARGARET LK FUEL CUST TW

OPERATION REMARKS	PASS	TAKE OFF	LAND	WT OF CARGO	HOURS	MIN.
KEN CLAIMS 5308 5310 RECON					0	8
YUK CLAIMS 5308					1	4
SLATS CK 5310					1	2

TYPE OF CONTRACT 1 2A 2B
 OTHER _____
 AUTHORIZED BY CHARTERER REP. Bill Jarvis
 HOURS FOR DAY 3.4
 " MONTH 64.1
 " CONTRACT _____

FLIGHT REPORT
TRANSWEST HELICOPTERS (1965) LTD.
 2792 NORLAND AVE., BURNABY, B.C. V5B 3A6

04026

CHARTERER GREAT PLAINS DATE 6/10/75
 ADDRESS 736 8TH AVE SW CALGARY ALBERTA A/C CF - DNV
 PILOT SIGNATURE Michael Klein BASE MARGARET LK FUEL CUST TW

OPERATION REMARKS	PASS	TAKE OFF	LAND	WT OF CARGO	HOURS	MIN.
YOGI YOGT CLAIMS 5308					0	9
BEV CLAIMS 5308					0	7
HARRISON CK 5310					2	4
TRUNK CK 5310					0	6

TYPE OF CONTRACT 1 2A 2B
 OTHER _____
 AUTHORIZED BY CHARTERER REP. Bill Jarvis
 HOURS FOR DAY 4.6
 " MONTH 53.2
 " CONTRACT _____

FLIGHT REPORT
TRANSWEST HELICOPTERS (1965) LTD.
 2792 NORLAND AVE., BURNABY, B.C. V5B 3A6

04028

CHARTERER GREAT PLAINS DATE 6/12/75
 ADDRESS 736 8TH AVE SW CALGARY ALBERTA A/C CF - DNV
 PILOT SIGNATURE Michael Klein BASE MARGARET LK FUEL CUST TW

OPERATION REMARKS	PASS	TAKE OFF	LAND	WT OF CARGO	HOURS	MIN.
TERRY FROM DAWSON TO MAYO 5310					1	2
TERRY FROM MAYO TO MARGARET LK 5310					1	3
STAKE SLATS CK 5310					4	0

TYPE OF CONTRACT 1 2A 2B
 OTHER _____
 AUTHORIZED BY CHARTERER REP. Bill Jarvis
 HOURS FOR DAY 6.5
 " MONTH 59.7
 " CONTRACT _____

FLIGHT REPORT
TRANSWEST HELICOPTERS (1965) LTD.
 2792 NORLAND AVE., BURNABY, B.C. V5B 3A6

04025

CHARTERER GREAT PLAINS DATE 6/9/75
 ADDRESS 736 8TH AVE SW CALGARY ALBERTA A/C CF - DNV
 PILOT SIGNATURE Michael Klein BASE MARGARET LK FUEL CUST TW

OPERATION REMARKS	PASS	TAKE OFF	LAND	WT OF CARGO	HOURS	MIN.
YOGI CLAIMS 5308					0	8
BEV CLAIMS 5308					0	5
WIND RIVER 5310					2	1
KIWE LAKE 5310					0	2

TYPE OF CONTRACT 1 2A 2B
 OTHER _____
 AUTHORIZED BY CHARTERER REP. Bill Jarvis
 HOURS FOR DAY 3.6
 " MONTH 48.6
 " CONTRACT _____

FLIGHT REPORT
TRANSWEST HELICOPTERS (1965) LTD.
 2792 NORLAND AVE., BURNABY, B.C. V5B 3A6

04035

CHARTERER GREAT PLAINS DATE 6/17/75
 ADDRESS 736 8TH AVE SW CALGARY, ALBERTA A/C CF - DNV
 PILOT SIGNATURE Mukul Khosla BASE MARGARET LK FUEL CUST TW

OPERATION REMARKS	PASS	TAKE OFF	LAND	WT OF CARGO	HOURS	MIN.
Yuk Claims (5308)					1	1
WIND RIVER, SLAKS CK RECON (5310)					2	2
BEAR RIVER RECON (5310)					1	6
SLING FUEL TO HARRISON CK RTN (5310) MARGARET LK					1	4
LITTLE WIND (5310)					2	1

TYPE OF CONTRACT 1 2A 2B
 OTHER _____ AUTHORIZED BY CHARTERER REP. [Signature] HOURS FOR DAY 7.4
 " MONTH 80.4
 " CONTRACT 80.4

FLIGHT REPORT
TRANSWEST HELICOPTERS (1965) LTD.
 2792 NORLAND AVE., BURNABY, B.C. V5B 3A6

04033

CHARTERER GREAT PLAINS DATE 6/15/75
 ADDRESS 736 8TH AVE SW CALGARY, ALBERTA A/C CF - DNV
 PILOT SIGNATURE Mukul Khosla BASE MARGARET LK FUEL CUST TW

OPERATION REMARKS	PASS	TAKE OFF	LAND	WT OF CARGO	HOURS	MIN.
SLAKS CK (5310)					1	0
SLING LUMBER FOR DOCK (5310)					0	7

TYPE OF CONTRACT 1 2A 2B
 OTHER _____ AUTHORIZED BY CHARTERER REP. [Signature] HOURS FOR DAY 1.7
 " MONTH 68.6
 " CONTRACT _____

FLIGHT REPORT
TRANSWEST HELICOPTERS (1965) LTD.
 2792 NORLAND AVE., BURNABY, B.C. V5B 3A6

04034

CHARTERER GREAT PLAINS DATE 6/16/75
 ADDRESS 736 8TH AVE SW CALGARY, ALBERTA A/C CF - DNV
 PILOT SIGNATURE Mukul Khosla BASE MARGARET LK FUEL CUST TW

OPERATION REMARKS	PASS	TAKE OFF	LAND	WT OF CARGO	HOURS	MIN.
LITTLE WIND #9 (5310)					1	8
MAYO RTN MARGARET LK (5310)					2	6

TYPE OF CONTRACT 1 2A 2B
 OTHER _____ AUTHORIZED BY CHARTERER REP. [Signature] HOURS FOR DAY 4.4
 " MONTH 73.0
 " CONTRACT _____

FLIGHT REPORT
TRANSWEST HELICOPTERS (1965) LTD.
 2792 NORLAND AVE., BURNABY, B.C. V5B 3A6

04032

CHARTERER GREAT PLAINS DATE 6/14/75
 ADDRESS 736 8TH AVE SW CALGARY, ALBERTA A/C CF - DNV
 PILOT SIGNATURE Mukul Khosla BASE MARGARET LK FUEL CUST TW

OPERATION REMARKS	PASS	TAKE OFF	LAND	WT OF CARGO	HOURS	MIN.
KEN CLAIMS RECON (5310)					0	6
Yuk Claims (5308)					0	7
SLAKS CK (5310)					1	5

TYPE OF CONTRACT 1 2A 2B
 OTHER _____ AUTHORIZED BY CHARTERER REP. [Signature] HOURS FOR DAY 2.3
 " MONTH 66.9
 " CONTRACT _____

FLIGHT REPORT
TRANSWEST HELICOPTERS (1965) LTD.
 2792 NORLAND AVE., BURNABY, B.C. V5B 3A6

04040

CHARTERER GREAT PLAINS DATE 6/20/75
 ADDRESS 736 8th Ave SW Calgary, ALBERTA A/C CF - BUH
 PILOT SIGNATURE Michael Hrus BASE MARGARET LC FUEL CUST TW

OPERATION REMARKS	PASS	TAKE OFF	LAND	WT OF CARGO	HOURS	MIN.
WINDY CLAIMS (5308)					0	9
KNORR CL (5310)					0	9
WIND RIVER RECON (5310)					2	3
FLT REPORT #04039 MISSING BECAUSE OF ERROR						

TYPE OF CONTRACT 1 2A 2B
 OTHER _____ AUTHORIZED BY CHARTERER REP. Bill Jarvis
 HOURS FOR DAY 4.1
 " MONTH 7.5
 " CONTRACT 94.3

FLIGHT REPORT
TRANSWEST HELICOPTERS (1965) LTD.
 2792 NORLAND AVE., BURNABY, B.C. V5B 3A6

04037

CHARTERER GREAT PLAINS DATE 6/18/75
 ADDRESS 736 8th Ave SW Calgary ALBERTA A/C CF - DNV
 PILOT SIGNATURE Michael Hrus BASE MARGARET LC FUEL CUST TW

OPERATION REMARKS	PASS	TAKE OFF	LAND	WT OF CARGO	HOURS	MIN.
KEN AND YUK CLAIMS (5308)					1	1
LITTLE WIND RIVER (5310)					2	3

TYPE OF CONTRACT 1 2A 2B
 OTHER _____ AUTHORIZED BY CHARTERER REP. Bill Jarvis
 HOURS FOR DAY 3.4
 " MONTH 3.4
 " CONTRACT 86.3

FLIGHT REPORT
TRANSWEST HELICOPTERS (1965) LTD.
 2792 NORLAND AVE., BURNABY, B.C. V5B 3A6

04041

CHARTERER GREAT PLAINS DATE 6/20/75
 ADDRESS 736 8th Ave SW Calgary, ALBERTA A/C CF - BUH
 PILOT SIGNATURE Michael Hrus BASE MARGARET LC FUEL CUST TW

OPERATION REMARKS	PASS	TAKE OFF	LAND	WT OF CARGO	HOURS	MIN.
MARGARET LC TO HARRISON CK 5310					0	8
SHING SUPPLIES FROM PORTER 5309 PUDDIE TO HARRISON CK					0	8

TYPE OF CONTRACT 1 2A 2B
 OTHER _____ AUTHORIZED BY CHARTERER REP. Bill Jarvis
 HOURS FOR DAY 1.6
 " MONTH 9.1
 " CONTRACT 95.9

FLIGHT REPORT
TRANSWEST HELICOPTERS (1965) LTD.
 2792 NORLAND AVE., BURNABY, B.C. V5B 3A6

04036

CHARTERER GREAT PLAINS DATE 6/18/75
 ADDRESS 736 8th Ave SW Calgary ALBERTA A/C CF - DNV
 PILOT SIGNATURE Michael Hrus BASE MARGARET LC FUEL CUST TW

OPERATION REMARKS	PASS	TAKE OFF	LAND	WT OF CARGO	HOURS	MIN.
YUK CLAIMS (5308)					1	0
LITTLE WIND #5 (5310)					2	0

TYPE OF CONTRACT 1 2A 2B
 OTHER _____ AUTHORIZED BY CHARTERER REP. Bill Jarvis
 HOURS FOR DAY 3.0
 " MONTH 83.4
 " CONTRACT 83.4

FLIGHT REPORT
TRANSWEST HELICOPTERS (1965) LTD.
 2792 NORLAND AVE., BURNABY, B.C. V5B 3A6

04046

CHARTERER GREAT PLAINS DATE 6/24/75
 ADDRESS 736 8TH AVE SW CALGARY ALBERTA A/C CF-BUH
 PILOT SIGNATURE Michael Hill BASE MARGARET RC FUEL CUST TW

OPERATION REMARKS	PASS	TAKE OFF	LAND	WT OF CARGO	HOURS	MIN.
JEANNETTE CLAIMS (5308)					0	5
LITTLE WIND #9 (5310)					2	0
JANE CLAIMS (5308)					1	6
HART RIVER RECON (5310)					1	2

TYPE OF CONTRACT 1 2A 2B AUTHORIZED BY CHARTERER REP. Bill Jarion HOURS FOR DAY 5.3
 OTHER: _____ " MONTH 23.3
 " CONTRACT 110.1

FLIGHT REPORT
TRANSWEST HELICOPTERS (1965) LTD.
 2792 NORLAND AVE., BURNABY, B.C. V5B 3A6

04045

CHARTERER GREAT PLAINS DATE 6/23/75
 ADDRESS 736 8TH AVE SW CALGARY ALBERTA A/C CF-BUH
 PILOT SIGNATURE Michael Hill BASE MARGARET RC FUEL CUST TW

OPERATION REMARKS	PASS	TAKE OFF	LAND	WT OF CARGO	HOURS	MIN.
JEANNETTE CLAIMS (5308)					0	9
LITTLE WIND #5 (5310)					2	4
SLATS RC (5310)					0	7
MARGARET TO MAYO 5310					1	5
MAYO TO JEANNETTE 5310					1	1

TYPE OF CONTRACT 1 2A 2B AUTHORIZED BY CHARTERER REP. Bill Jarion HOURS FOR DAY 6.6
 OTHER: _____ " MONTH 18.0
 " CONTRACT 104.8

FLIGHT REPORT
TRANSWEST HELICOPTERS (1965) LTD.
 2792 NORLAND AVE., BURNABY, B.C. V5B 3A6

04044

CHARTERER GREAT PLAINS DATE 6/22/75
 ADDRESS 736 8TH AVE SW CALGARY ALBERTA A/C CF-BUH
 PILOT SIGNATURE Michael Hill BASE MARGARET RC FUEL CUST TW

OPERATION REMARKS	PASS	TAKE OFF	LAND	WT OF CARGO	HOURS	MIN.
WINDY CLAIMS (5308)					0	8
WINDS RIVER #1 & 2 RECON (5310)					1	5

TYPE OF CONTRACT 1 2A 2B AUTHORIZED BY CHARTERER REP. Bill Jarion HOURS FOR DAY 2.3
 OTHER: _____ " MONTH 11.4
 " CONTRACT 98.2

FLIGHT REPORT
TRANSWEST HELICOPTERS (1965) LTD.
 2792 NORLAND AVE., BURNABY, B.C. V5B 3A8

04071

CHARTERER GREAT PLAINS DATE 7/17/75
 ADDRESS 736 8TH AVE SW CALGARY ALBERTA A/C CF-BUH
 PILOT SIGNATURE Michael Kline BASE MARGARET LK FUEL CUST TW

OPERATION REMARKS	PASS	TAKE OFF	LAND	WT OF CARGO	HOURS	MIN.
WEATINGE CHECK (5310)					0	1
BEV (5308)					0	2
Laura (5310)					0	7

TYPE OF CONTRACT 1 2A 2B
 OTHER _____ AUTHORIZED BY CHARTERER REP. Blt Jarvis
 HOURS FOR DAY 1.0
 " MONTH 102.4
 " CONTRACT 189.2

FLIGHT REPORT
TRANSWEST HELICOPTERS (1965) LTD.
 2792 NORLAND AVE., BURNABY, B.C. V5B 3A8

04074

CHARTERER GREAT PLAINS DATE 7/19/75
 ADDRESS 736 8TH AVE S.W. CALGARY ALBERTA A/C CF-BUH
 PILOT SIGNATURE Michael Kline BASE MARGARET LK FUEL CUST TW

OPERATION REMARKS	PASS	TAKE OFF	LAND	WT OF CARGO	HOURS	MIN.
Laura CLAIMS (5310)					0	8
SLING FUEL					0	4
YUK CLAIMS (5308)					1	0

TYPE OF CONTRACT 1 2A 2B
 OTHER _____ AUTHORIZED BY CHARTERER REP. Blt Jarvis
 HOURS FOR DAY 2.2
 " MONTH 2.2
 " CONTRACT 194.8

FLIGHT REPORT
TRANSWEST HELICOPTERS (1965) LTD.
 2792 NORLAND AVE., BURNABY, B.C. V5B 3A8

04070

CHARTERER GREAT PLAINS DATE 7/16/75
 ADDRESS 736 8TH AVE SW CALGARY ALBERTA A/C CF-BUH
 PILOT SIGNATURE Michael Kline BASE MARGARET LK FUEL CUST TW

OPERATION REMARKS	PASS	TAKE OFF	LAND	WT OF CARGO	HOURS	MIN.
SLABS EK (5310)					1	2
Maxo - Margaret Lk (5310)					2	5

TYPE OF CONTRACT 1 2A 2B
 OTHER _____ AUTHORIZED BY CHARTERER REP. Blt Jarvis
 HOURS FOR DAY 3.7
 " MONTH 101.4
 " CONTRACT 188.2

FLIGHT REPORT
TRANSWEST HELICOPTERS (1965) LTD.
 2792 NORLAND AVE., BURNABY, B.C. V5B 3A8

04072

CHARTERER GREAT PLAINS DATE 7/18/75
 ADDRESS 736 8TH AVE S.W. CALGARY ALBERTA A/C CF-BUH
 PILOT SIGNATURE Michael Kline BASE MARGARET LK FUEL CUST TW

OPERATION REMARKS	PASS	TAKE OFF	LAND	WT OF CARGO	HOURS	MIN.
Laura 4 TRIPS (5310)					3	4

TYPE OF CONTRACT 1 2A 2B
 OTHER _____ AUTHORIZED BY CHARTERER REP. Blt Jarvis
 HOURS FOR DAY 3.4
 " MONTH 105.8
 " CONTRACT 192.6

FLIGHT REPORT

TRANSWEST HELICOPTERS (1965) LTD.
2792 NORLAND AVE., BURNABY, B.C. V5B 3A6

04090

CHARTERER GREAT PLAINS DATE 7/31/75
 ADDRESS 736 8TH AVE SW CALGARY ALBERTA A/C CF-BUH
 PILOT SIGNATURE Michael Hux BASE MARGARET SC FUEL CUST TW

OPERATION REMARKS	PASS	TAKE OFF	LAND	WT OF CARGO	HOURS	MIN.
OGILVIE RIVER (5310)					5	5

TYPE OF CONTRACT 1 2A 2B AUTHORIZED BY CHARTERER, REP. B.L. Tarion HOURS FOR DAY 5.5
 OTHER _____ " MONTH 42.3
 " CONTRACT 234.9

FLIGHT REPORT

TRANSWEST HELICOPTERS (1965) LTD.
2792 NORLAND AVE., BURNABY, B.C. V5B 3A6

04087

CHARTERER GREAT PLAINS DATE 7/29/75
 ADDRESS 736 8TH AVE SW CALGARY ALBERTA A/C CF-BUH
 PILOT SIGNATURE Michael Hux BASE MARGARET SC FUEL CUST TW

OPERATION REMARKS	PASS	TAKE OFF	LAND	WT OF CARGO	HOURS	MIN.
SNAKE RIVER RECON (5310)					3	4
SLING FUEL FROM LAKE (5310)					0	1

TYPE OF CONTRACT 1 2A 2B AUTHORIZED BY CHARTERER, REP. B.L. Tarion HOURS FOR DAY 3.5
 OTHER _____ " MONTH 33.9
 " CONTRACT 226.5

FLIGHT REPORT

TRANSWEST HELICOPTERS (1965) LTD.
2792 NORLAND AVE., BURNABY, B.C. V5B 3A6

04089

CHARTERER GREAT PLAINS DATE 7/30/75
 ADDRESS 736 8TH AVE SW CALGARY ALBERTA A/C CF-BUH
 PILOT SIGNATURE Michael Hux BASE MARGARET SC FUEL CUST TW

OPERATION REMARKS	PASS	TAKE OFF	LAND	WT OF CARGO	HOURS	MIN.
OGILVIE RIVER (5310)					2	9

TYPE OF CONTRACT 1 2A 2B AUTHORIZED BY CHARTERER, REP. B.L. Tarion HOURS FOR DAY 2.9
 OTHER _____ " MONTH 36.8
 " CONTRACT 229.4

FLIGHT REPORT

TRANSWEST HELICOPTERS (1965) LTD.
2792 NORLAND AVE., BURNABY, B.C. V5B 3A6

04085

CHARTERER GREAT PLAINS DATE 7/28/75
 ADDRESS 736 8TH AVE SW CALGARY ALBERTA A/C CF-BUH
 PILOT SIGNATURE Michael Hux BASE MARGARET SC FUEL CUST TW

OPERATION REMARKS	PASS	TAKE OFF	LAND	WT OF CARGO	HOURS	MIN.
SNAKE RIVER RECON (5310)					3	2

TYPE OF CONTRACT 1 2A 2B AUTHORIZED BY CHARTERER, REP. B.L. Tarion HOURS FOR DAY 3.2
 OTHER _____ " MONTH 30.4
 " CONTRACT 223.0

GEOLOGICAL UNITS

- 24 GREYWACKE-green conglom. in pt, cordierite
- 22 SHALE-blk.-dk. brn.
- 20 SILTSTONE-grn., chloritic
- 13, 19, 21 QUARTZITE-banded blk.& wh. hem. qtz. veins.
- 18 ARGILLITE-gy.& brn. banded
- 17, 23 ARGILLITE-lt. brn.-orange metamorphic minerals
- 16 SHALE
- 15 ARGILLITE-blk.
- 12 SILICIFIED DOLOMITE-lt. brn., banded
- 9, 10, 11 ARGILLITE-dk. gy.
- 8 ARGILLITE-cordierite
- 7 SILTSTONE-grn.
- 6, 14 ORTHOQUARTZITE-py. them.
- 5 GREYWACKE
- 4 CONGLOMERATE-pink, specularite
- 3 SILTSTONE SANDSTONE SHALE a) recessive b) c)
- 2 ORTHOQUARTZITE
- 1 GREYWACKE

SYMBOLS

- GEOLOGICAL BOUNDARIES-INDEFINITE
- >>>>> RIDGES (POINTS DOWNHILL)
- ↑↑ ANTICLINE
- └¹⁰ DIP & STRIKE OF STRATA
- ~~~~~ FAULTS-INDEFINITE

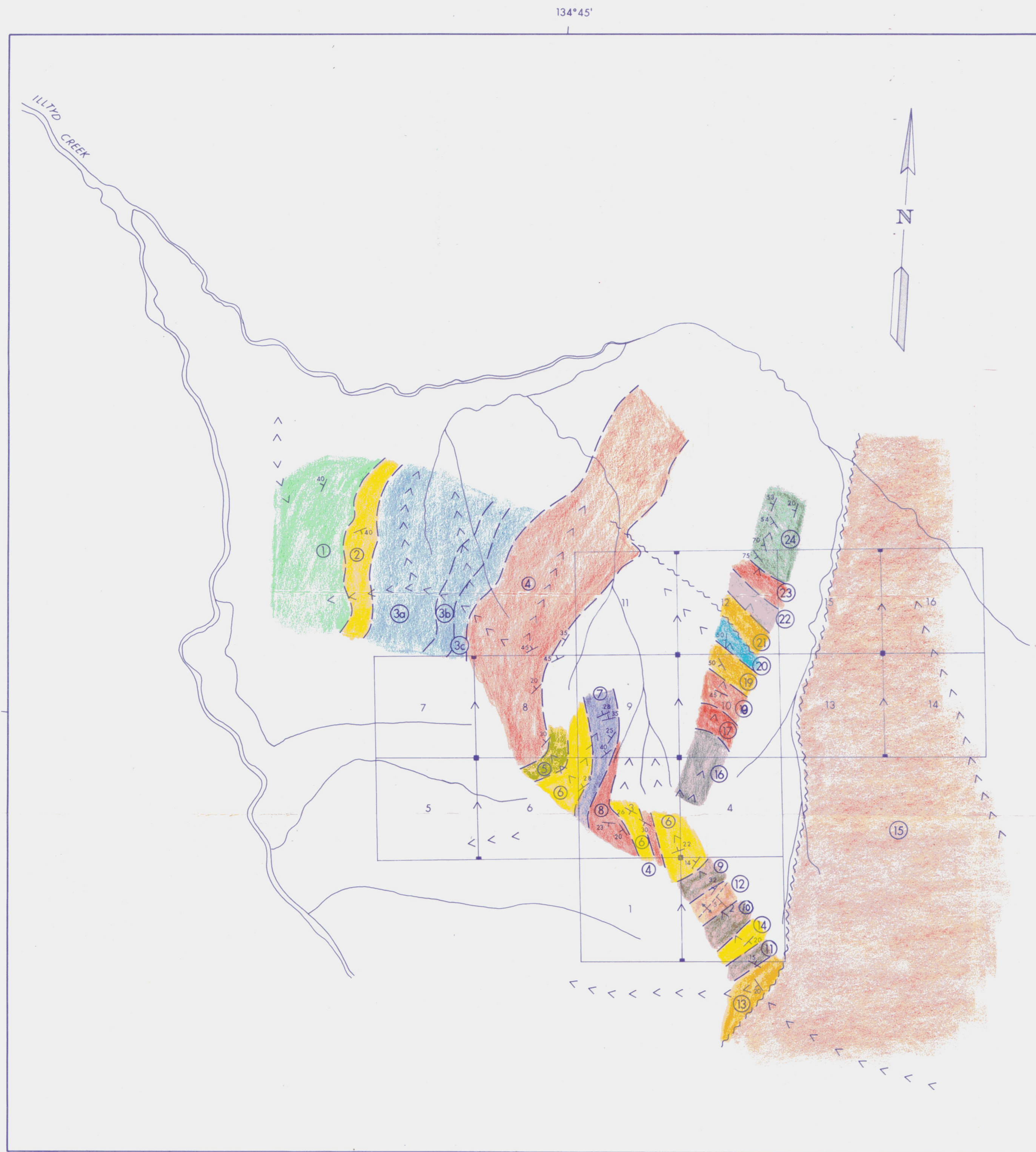


PLATE 1



DEVELOPMENT COMPANY OF CANADA, LTD.
YUKON TERRITORY
MACKENZIE PROJECT
YOGI CLAIMS
GEOLOGY



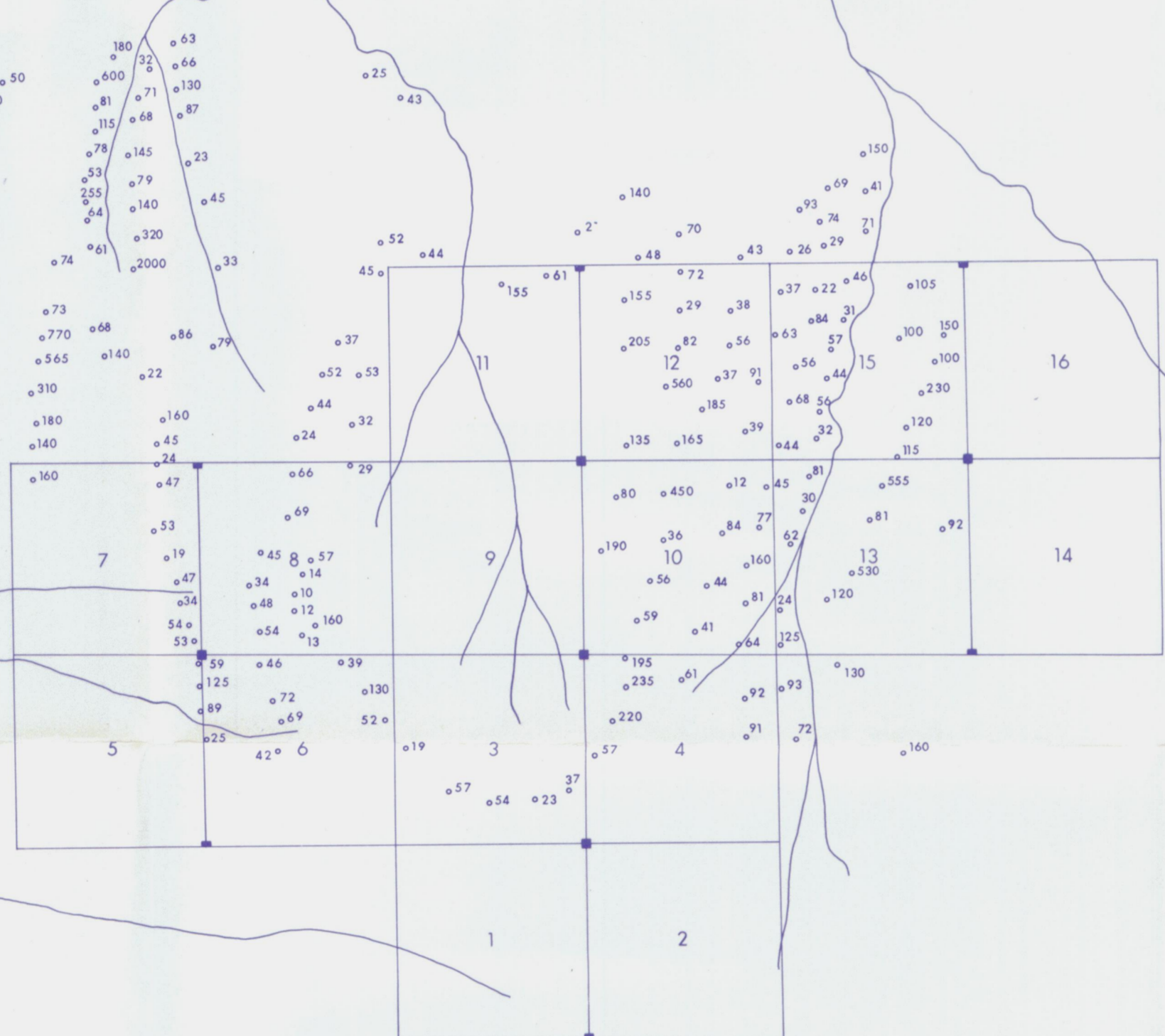
MAYO M.D.
C. WINTER

N.T.S.: 106-E-2
JUNE 1975

134°45'



ILLIYO CREEK



65°09'

65°09'

134°45'

PLATE 2



DEVELOPMENT COMPANY OF CANADA, LTD.

YUKON TERRITORY

MACKENZIE PROJECT

YOGI CLAIMS

Zn GEOCHEMISTRY



MAYO M.D.
C. WINTER

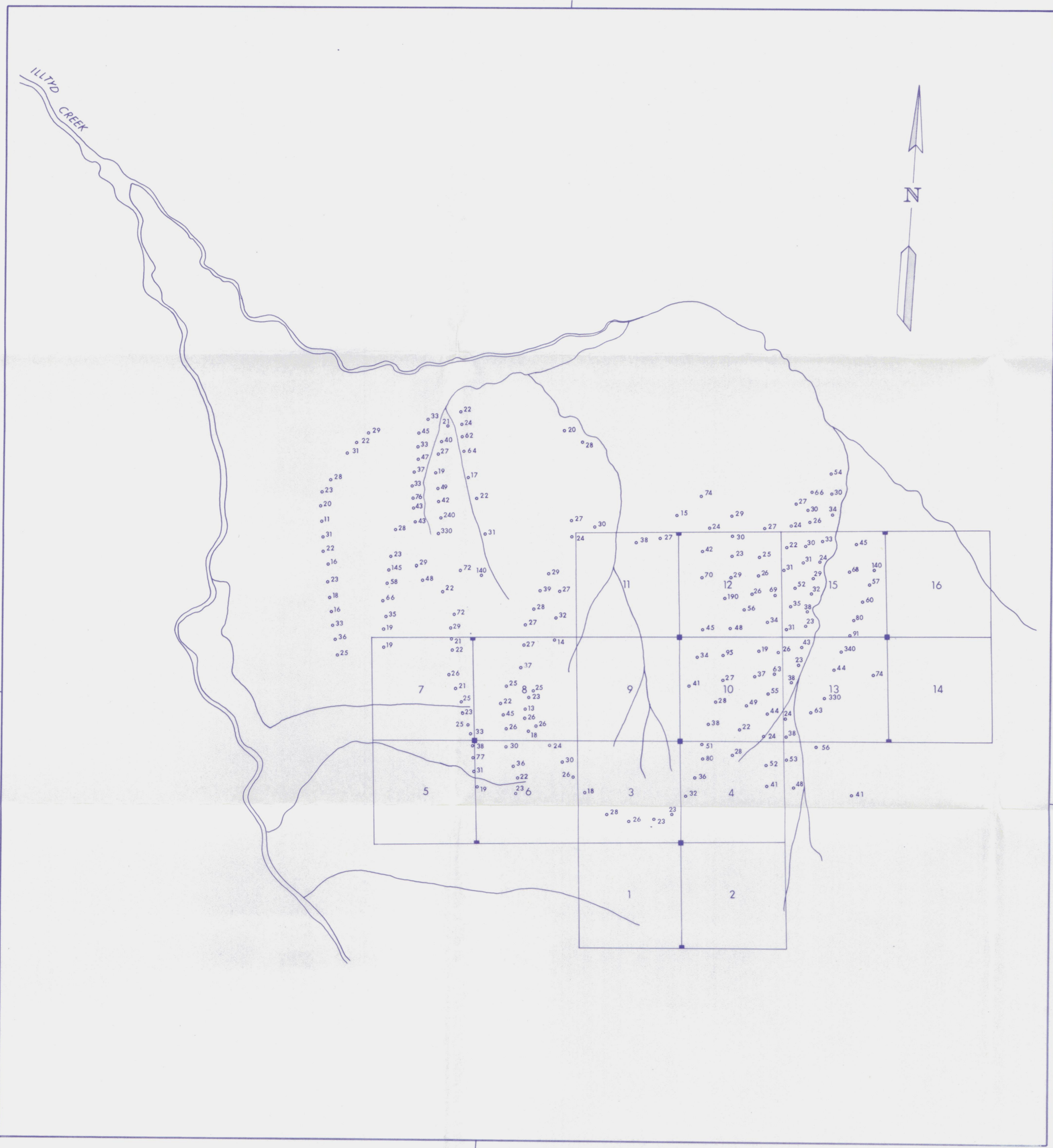
N.T.S. : 106-E-2
JUNE 1975

134°45'



ILLIYO CREEK

65°09'



65°09'

134°45'

PLATE 3



DEVELOPMENT COMPANY OF CANADA, LTD.

YUKON TERRITORY

MACKENZIE PROJECT

YOGI CLAIMS

Pb GEOCHEMISTRY



MAYO M.D.
C. WINTER

N.T.S. : 106-E-2
JUNE 1975

