

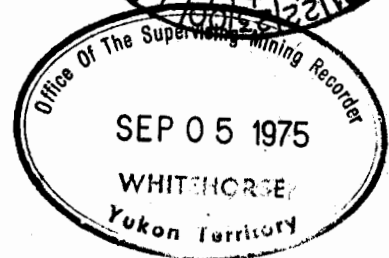


GREAT PLAINS DEVELOPMENT COMPANY OF CANADA, LTD.,

GEOLOGICAL AND GEOCHEMICAL  
EVALUATION OF THE WINDY CLAIMS  
YUKON TERRITORY

65o11' North Latitude  
134o53' West Longitude

May 23 June 26 1975.



This report has been examined by the Geological Evaluation Unit and is recommended to the Commissioner to be considered as representation work in the amount of \$ 2812.50

*B. Craig*  
Resident Geologist or  
~~Resident Mining Engineer~~

Considered as representation work under Section 53 (4) Yukon Quartz Mining Act.

*B.R. Baxter*  
B.R. BAXTER  
Supervising Mining Recorder

*[Signature]*  
Commissioner of Yukon Territory

N.T.S. 106-E-2

B.D. Farion,  
P. Geol.

*[Signature]*

090027

## INDEX

### A. SUMMARY

### B. INTRODUCTION

1. Location
2. Property
3. Field Methods
4. Geography

### C. GEOLOGY

1. Lithology
2. Age
3. Structure

### D. GEOCHEMISTRY

### E. CONCLUSIONS

### F. RECOMMENDATIONS

Appendix 1            Names and Addresses of Personnel

Appendix 2            Statement of Qualifications

Appendix 3            Assay Results

Appendix 4            Costs

Plates            1,    Location Map  
                         2.    Sections  
                         3.    Geology and claims  
                         4.    Soil Sampling - Zinc Values  
                         5.    Soil Sampling - Lead Values  
                         6.    Soil Sampling - Cadmium Values

\*\*\*\*\*

## A. SUMMARY

1. Following the recognition of environments favourable to the formation of stratabound lead-zinc deposits, Great Plains conceived of and operated a geochemical reconnaissance program in the Bonnet Plume area of Yukon Territory. The Windy claims, one of several claim groups staked during the 1974 exploration program, will be the subject of this report.

2. The field crew assembled to complete assessment work on the claim group moved to the base camp at Margaret Lake by May 23, 1975.

### Personnel included:

Bill Farion	Party Chief
Barry Edmonson	Student Geologist
Colin Winter	Geologist
Janet Helton	Student Geologist
Romulo Santos	Student Geologist
John Van der Lee	Geological Assistant
Nigel Lumsden	Geological Assistant
Janet Etzkorn	Cook
Mike Hofius	Helicopter Pilot
Paul Koovisk	Apprentice Engineer

Transwest Helicopters (1965) Ltd., of Burnaby, B.C. supplied a Hughes 500 C helicopter, while Trans North Turbo Air supplied fixed wing support from Mayo. Expediting services were provided by Stirling Expediting Services, Mayo and assaying was performed by Barringer Research, Whitehorse, Yukon.



# MACKENZIE PROJECT

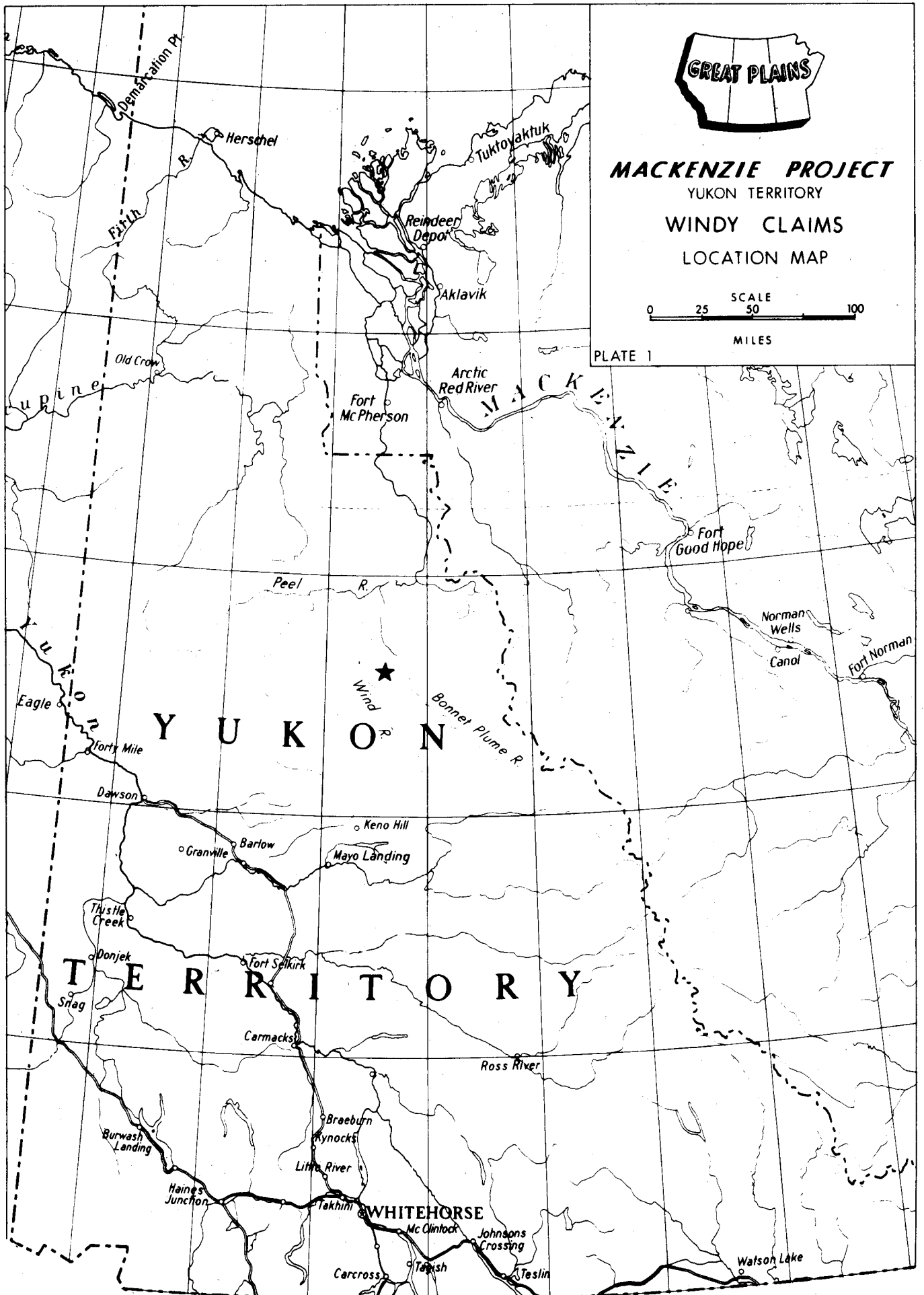
YUKON TERRITORY

## WINDY CLAIMS

### LOCATION MAP



PLATE 1



## B. INTRODUCTION

### 1. Location

The claims are located on Illtyd Creek, 15 miles southwest of Margaret Lake. N.T.S. is 106-E-2. Margaret Lake is one of the few lakes in the area on which float planes can operate.

### 2. Property

The property consists of 14 contiguous mineral claims.

<u>Claims</u>	<u>Grant Numbers</u>
Windy 1-4	Y88959-Y88962
Windy 5-12	Y88965-Y88972
Windy 13-14	Y88963-Y88964

### 3. Field Methods

The area was mapped on a scale of 1060 feet  $\approx$  1 inch. A 5 x blowup, to 1"= 1060', was made of a 9" x 9" airphotograph (1"=5280') taken by National Air Photo Library (Energy, Mines and Resources, Ottawa) and used as a basemap. Use was made of the zinc spot test, a chemical which turns red in contact with the weathering products of zinc sulphides. A cold extractable test for heavy metals was made on each stream sediment sample taken. Soil, stream and rock samples taken were submitted to Barringer Research for analysis.

### 4. Geography

The claims are situated on a cuesta which has been cut at right angles by streams draining into Illtyd Creek. The topography is rugged. Vegetation consists of alpine shrubs and grasses.

## C. GEOLOGY

### 1. Lithology

The units described are plotted on a geological map at an approximate scale of 1"=1060' using a 5X blowup of a 1968 National Air Photo Library airphotograph as a base map.

Columnar sections were measured using a five foot staff. Two columnar sections are described.

Unit 1

The unit consists of fine to coarse-grained grey quartzitic sandstone; subangular to subrounded, moderately sorted grains, weathers to a dull brown, and is cemented with silica. The upper part of the unit appears to be similar but more recessive.

Unit 2

The unit is characteristic of the "swiss cheese" limestone, consisting of pods and discontinuous layers of grey weathering, fine-grained limestone within a light brown weathering siltstone matrix. The pods or pebbles of limestone range in size from 2-5 cm. The limestone is usually recessive, and on weathered surfaces, gives the unit its "swiss-cheese" appearance.

Unit 3

The unit consists of microcrystalline, massive to thick bedded limestone, medium grey in fresh surface, light grey to buff and oranges in weathered surface and contains occasional vugs lined with calcite crystals and ferruginous material.

Unit 4

The unit consists of calcareous sandstone-siltstone interbeds.

Unit 5

The unit consists of interbeds of microcrystalline limestone and calcareous siltstone in wavy nodular beds, light to medium grey in colour.

Unit 6 ≡ Unit 2

Unit 7

The unit consists of a megaconglomerate composed of limestone and dolomite boulders with a calcareous sandstone-shale matrix. Dolomitization of the limestone occurs in large pods several to tens of feet in diameter. The unit appears to be similar to the wildflysch breccias found in the Table Head Formation of Newfoundland. The matrix is olive grey green. The limestones are light grey with a microcrystalline mass.

Units 8-12

The units consist of dark microcrystalline limestones which are in part recrystallized to dolomite in pods. The limestone is medium

to dark grey in weathered surface, black in fresh surface, with occasional small vugs 1-5 mm in diameter. The dolomite is white, weathers orange-brown, sucrosic and massive.

## 2. Age

On the basis of trilobites and brachiopods found on the claim group and in the immediate area, the units can be reliably dated. Unit 1 is placed in the Lower Cambrian Backbone Ranges Formation. Units 2-12 are placed in the Sekwi Formation, also of Lower Cambrian age. Species collected and identified include Ollenellus puertoblancoensis (Lockman), Bonria columbensis (Fritz G.S.C., 1972), and Paterinid sp. brachiopods.

## 3. Structure

The strata have an overall dip of 10 degrees to the southwest.

## D. GEOCHEMISTRY

Soil samples were taken along two contours where possible. Soil development is poor due to the steep slopes and the high percentage of rock fragments. Organic material and vegetation are often found directly over bedrock or boulders. The "B" horizon sampled consisted of sand to clay sized particles. Sufficient "B" horizon soil could be found for a sample at each location.

Analyses were conducted by Barringer Research. Samples were dried, screened to 80 mesh, digested in perchloric acid (HCl O4), and analysed on an atomic absorption unit.

The individual metals are plotted at the locations of the soil sample sites on Plates 4, 5 and 6.

## E. CONCLUSIONS

The mineralized zone in the adjacent Flunk group of claims occurs in carbonates equivalent to units 8 and 9. The carbonates mapped in the area represent a dolomitization front in which the limestone was recrystallized. The mineralizing fluids were probably restricted, since most of the mineralization occurs in a small area within the Flunk group, with a small core of high grade mineralization (8%+) in a large area of low grade mineralization (2% or less). The sporadic nature of the soil anomalies would indicate that small pods of mineralization do exist in the carbonates covered by the Windy claims. However economic orebodies on the property are unlikely.

**F. RECOMMENDATIONS**

The samples which are anomalously high in zinc and lead are sporadic and occur in the lower microcrystalline limestones. The samples taken on claims 5 and 6 should be checked by taking additional samples in the area. The work done to date should be filed for assessment credit. Future work will depend upon developments on neighboring claim groups and results obtained when the anomalous sample sites are resampled.

\*\*\*\*\*

## STATEMENT OF QUALIFICATIONS

1. I graduated with a Bachelor of Science in Geology from the professional program at the University of Alberta in April, 1971.
2. I have been employed as a geologist with various companies since graduation in 1971.
3. I have been employed as a geologist in the mineral division of Great Plains since August 1972.
4. I applied and was accepted into the Association of Professional Engineers, Geologists and Geophysicists of Alberta in 1973.
5. I have supervised and carried out the work outlined in this report.



---

Bill Dave Farion  
P. Geol.,

NAMES AND ADDRESSES OF PERSONNEL

Janet Elizabeth Etzkorn Cook,  
7169 Maureen Crescent,  
BURNABY, 2,  
British Columbia.

Barry William Edmonson,                      Student Geologist  
2527 - 17th Street N.W.  
CALGARY,  
Alberta.

John Donald Gregory Van der Lee      Geological Assistant.  
8212-10th Street S.W.  
CALGARY,  
Alberta.

Romulo D. Santos                      Student Geologist  
3903 - 14th Avenue N.E.  
CALGARY,  
Alberta.

Janet Lenore Helton                      Student Geologist  
947 Canfield Crescent S.W.  
CALGARY,  
Alberta.

Colin Quinton Winter                      Geologist (B.A. Oxon)  
'Greenways',  
37 Keniworth Road,  
Ealing,  
LONDON, W55PA,  
England.

Nigel Lumsden,                      Geological Assistant  
c/o Great Plains Development  
Company of Canada, Ltd.,  
736 - 8th Avenue S.W.  
CALGARY,  
Alberta.

Bill Dave Farion,                      Party Chief  
#84 210-86th Avenue S.E.  
CALGARY,  
Alberta.

Mike Hofuis                      Transwest Helicopters  
Paul Koovisk                      Burnaby, B.C.





# BARRINGER RESEARCH Limited

*Windy claims*

304 Carlingview Drive  
Rexdale, Toronto, Canada  
Phone: 677-2491  
Cable: Baresearch

Geochemical  
Laboratory  
Report

DATE

June 24th, 1975

Great Plains Development of Canada  
736-8th Avenue S.W.  
Calgary, Alberta

Attention: B. Farrion

REPORT NUMBER 9-A

*Con-Jalun*

SAMPLE NUMBER	HC10 <sub>4</sub>	HC10 <sub>4</sub>	HC10 <sub>4</sub>	Sample No.	HC10 <sub>4</sub>	HC10 <sub>4</sub>	HC10 <sub>4</sub>
	Pb ppm	Zn ppm	Cd ppm		Pb ppm	Zn ppm	Cd ppm
BE-5-6-6-1	64	105	2.2	BE-5-6-6-20	46	150	1.4
2	37	180	1.8	21	48	225	1.6
3	37	380	1.6				
4	34	240	2.1				
5	37	150	2.2				
6	49	350	2.9				
7	56	310	2.2				
8	72	480	2.8				
9	70	180	2.2				
10	57	345	2.4				
11	45	73	1.9				
12	44	125	2.0				
13	48	215	1.9				
14	37	84	2.1				
15	65	240	1.8				
16	92	460	2.2				
17	45	220	1.6				
18	42	175	2.1				
19	43	165	1.3				

Winky claims 5308



# BARRINGER RESEARCH Limited

304 Carlingview Drive  
Rexdale, Toronto, Canada  
Phone: 677-2491  
Cable: Baresearch

Geochemical  
Laboratory  
Report

DATE  
July 21st, 1975

Great Plains Development  
736 - 8th Avenue S.W.  
Calgary, Alberta

Attention: Mr. B. Farion

REPORT NUMBER 29-A

*Q. Farion*

SAMPLE NUMBER	HClO <sub>4</sub> Pb ppm	HClO <sub>4</sub> Zn ppm	HClO <sub>4</sub> Cd ppm						
RS-5-6-20-1	46	150	2.6						
2	75	250	2.2						
3	49	110	2.4						
4	45	575	2.4						
5	44	250	2.0						
6	57	435	2.2						
7	56	200	1.8						
8	65	220	1.5						
9	47	210	1.8						
10	47	155	1.2						
11	64	230	1.8						
12	56	180	2.0						
13	44	240	1.5						
14	41	380	1.9						
15	49	330	1.4						
16	59	215	1.4						
17	57	230	1.6						
18	50	130	1.4						
19	47	150	1.6						
20	26	50	1.2						

Sample No.	HC10 <sub>4</sub> Pb ppm	HC10 <sub>4</sub> Zn ppm	HC10 <sub>4</sub> Cd ppm						
RS-6-20-21	28	40	.9						
22	46	205	1.4						
23	44	150	1.1						
24	84	675	2.0						
25	45	175	1.6						
26	74	360	1.3						
27	56	150	1.0						
28	405	2800	4.0						
29	42	180	1.3						
30	93	205	1.4						
JV-5-6-20-1	40	77	1.3						
2	72	210	2.4						
3	53	78	2.6						
4	81	305	2.0						
5	47	410	2.0						
6	210	950	2.6						
7	53	580	2.8						
8	43	210	1.7						
9	41	51	1.4						
10	40	72	1.6						
11	38	135	1.6						
12	37	120	1.4						
13	61	260	1.4						
14	44	150	1.0						
15	39	230	1.4						
16	44	270	1.5						
17	58	180	1.4						

Sample No.	HClO <sub>4</sub> Pb ppm	HClO <sub>4</sub> Zn ppm	HClO <sub>4</sub> Cd ppm						
7-5-6-20-18	62	310	1.8						
19	IS	IS	IS						
20	46	160	1.2						
21	35	110	1.1						
22	33	49	.9						
23	49	210	1.2						
24	41	120	1.2						
25	83	660	2.0						
26	47	280	1.4						
27	155	1350	2.1						
28	57	160	2.0						
29	58	280	1.3						
30	64	190	1.7						
TV-5-6-22-1	42	61	.8						
2	38	56	1.1						
3	46	49	1.0						
4	56	210	1.2						
5	43	690	2.1						
6	44	295	1.4						
7	215	300	3.0						
8	73	200	1.8						
9	320	325	2.6						
10	54	140	3.2						
11	74	115	1.6						
12	67	180	2.4						
13	190	580	3.4						
14	74	1250	3.9						



EXPENDITURES

WINDY CLAIMS

1-14

ASSAYING	\$ 245.70
SALARIES	\$ 773.42
HELICOPTERS	\$1,023.50
FIXED WING	\$ 380.38
TRAVEL AND FREIGHT	\$ 84.70
OFFICE SUPPLIES	\$ 166.74
CAMP SUPPLIES	\$ 590.10
	<hr/>
	\$3,264.54
	=====

# Camp Supplies

AFF	5308	Salaries	Fixed Wing	Travel Freight	Office Supplies	Camp Supplies	Helicopter	Lunches
1	Feb 14	Energy Mines + Res Monacos			237.00			
2	25-28	TNTA Fuel haul 35%	1463.00					
3	25-27	Knowledge 50%		34.25				
4	Mar 14	Maps Revenue Gen			14.00			
5	6	TNTA Fuel haul 35%	141					
6	Feb 26	TNTA	1470					
7	Mar 5	TNTA	122.85					
8	7	TNTA	245.70					
9	7	GSC			69.00			
10	FEB 20	FUEL JP4 35%				1842.27		
11	Mar 27	TNTA	290.16					
12	Apr 2	BCI 12 topolines 50%			25.65			
13	Mar 12	Energy Mines + Res 5 photos 50%			31.00			
14	Mar 18	" " " 10 air photos 50%			27.00			
15	27	TNTA 35%	118.27					
16	APR 30	NW Survey Topomaps			500.96			
17	Apr 30	Rubber				79.95		
18	May 5	Car Freightways 35%		95.57				
19	19	Air fares		399.35				
20	May 20-23	TNTA	564.20					
21	15	Caldraft Drafting supplies			31.15			
22	20	Bannys camp supplies				337.26		
23	23	Chateau Maps		49.00				
24	23	Bannys camp supplies				219.21		
25	16	Library Resencing report			3.75			
26	26	Atlas Copco plunger parts				258.85		
27	14	Dominex Aluminum Tent				489.88		
28	22	Air fare R Santos 50%		65.50				
29		CP Air Northward freight		89.64				
30		CP Air " "		10.00				
31	29	Urban explosive crimpers		5.00		5.00		
32	30	Freight		8.00		8.00		
33	30	Hooper Dwyer Walter			4.50			
34	30	Krosane Whitpass				27.48		
35	Jan 3	Bannys camp supplies				118.27		
36			2959.89	701.31	944.01	3317.77		
37							7972.91	

Camp Supplies

Salaries Special Travel Office Camp  
Wage Freight Supplies Supplies

	Salaries	Special Wage	Travel Freight	Office Supplies	Camp Supplies	
1 May Totals Forward	2959.88	701.31	944.01	3377.77		7982.97
2 May 26 International Survival Supplies				71.92		
3 May 27 Yukon Explosives				137.34		
4 May 20 CNTU Radio licence			7.00			
5 June 4 Furber beaver @ 155 to GP	100.75					
6 June 6 Lannys best buy camp supplies				443.03		
7 June 6 Northward freight		10.00				
8 May Plugger rental 1 day @ \$5.00				5.00		
9 June 5 Horwood's office supply			41.85			
10 May Stirling Expediting			202.50			
11 June 14 Lannys camp supplies				605.51		
12 June 14 TNTA Otter	227.50					
13 May 22 Canadian Propane				11.98		
14 May 16 Freight		20.82				
15 May 13 Cheaney Hardware				6.97		
16 May 16 B.C.I. cinometers, hand lenses			79.75			
17 May 20 White Pass kerosene & alcohol				41.62		
18 June 20 TNTA OTTER 1/2 GP 1/2 PROSCO	227.50					
19 June 20 Groceries				292.96		
20 June 15 Stirling Expediting 50%			167.28			
21 June 27 Lannys Dept store				214.83		
22 June 16 " "				39.07		
23 June 27 Northward Licht C. Otter		1.71				
24 May 16 B.C.I. cinometers hand lens						
25 June 11 Gases - chemical			445.61			
26 June 13 Deakin 2 malloxes				22.60		
27 May 5 Hougens mallox, wax, rope				126.60		
28 June 10 B.C.I. cinometer			50.40			11459.33
29 June 20 Lannys 50%				320.94		
30 July 2 Hougens cot & frame				38.95		
31 July 7 Fuel 5 bbl @ 63	455			315.00		
32 July 7 Otter trip	455					
33 July 28 Furber Beaver trip	351					
34 July 28 Whitepass 4 bbl fuel				25.2		1217.94

Summed with  
June 26

# Barringer Assay

	1	2	3	4	5	6	7	8	9	10	11	12
Barringer Assay Samples	5310	Ken	Ben	Jeanette	Wendy	Yogi	Yuk					
May 27 9 rock								26.5				
28 2 rock			5.90									
28				2.95								
28			2.95									
29				11.80								
29						5.90						
June 4/75		35.70										
June 7 trench				5.90								
June 10								5.90				
10								11.80				
June 26 BE soil				17.60								
Ken Cl soil		9.650										
Jeanette JH 55-29												
June 1	17.60											
May 31 JH					24.20							
JU		41.80										
BE rock	11.80											
JU-6-2	19.90											
JH 5-6-2 16 samples				35.20								
JV 5-6-2 + NL 5-6-8-9			167.20									
RS 5-6-9								235.40				
								147.40				
	59.40			77.00		46.20						
			85.00									
25 element	42.00											
	\$							26.40				
								17.70				
25 element	54									88.50		
lft	37.40											
lft	116.6											
25 element	72											
	2.95											
June 1975										50.60		
Totals June 19	433.55	183.15	293.45	147.40	52.10	471.15		139.10				

# Barringer Assay Cost.

	1	2	3	4	5	6	7	8	9	10	11	12
	5310	5308	5308	5308	5309	Yogi 5308	5308	5308				
		Karv	Bar	Janetti	Windy		JUK	JANE	Hats			
Totals to June 19/75	433.75	143.15	293.45	147.90	52.10	471.15	139.10		Laura	BUH		
24 soil samples June 20		52.90										
58 " " June 20							127.60					
88 " " " 22					193.60							
73 " " " 24				160.60								
June 26 (16, 8, 7) 31 samples	68.20	235.95	293.45	308.00	245.70	471.15	266.70		Totals submitted for assessment June 26/75			
June 29 35 samples											77	
June 26 15 soil samples											33	
June 29 " silt	24.20										38	
July 4											<del>158</del>	
July 4	143.00		22.00									
July 4	7											
July 7	70.40											
July 7 (changed from 5308 to 5310)	52.40											
July " "	17.70											
July 11 27 silt	87.25											
July 11 11 + 14 "	72.50											
July 11 3 rocks	15.00											
July 15 13 rock	1618.90	235.95	315.45	308.00	245.70	471.15	266.70	148.00	2040.95	For claims only		
July 16 9 rock + 116 acid	50.70											
July 11 soil + rock samples	191.10		368.35									
July 16 #30	187.60											
July 20 #31									206.50			
July 21 32										142.10		
July 25 33	273.10											
July 25 34									46.40	72.50		
July 25 34										20.30		
July 25 35										18.00		
Totals	232.140	235.95	683.40	308	245.70	471.15	266.70	198.00	252.90	252.90		



June Personnel

	1	2	3	4	5	6	7	8	9	10	11	12
June Personnel 5308 Salaries	5310	5308 KEN	BEV	JEANETTE	WINDY	YUCI	YUK	JANE	Cook 530C	Cook 5310	5310	5308
1	7	12000				80			20	20	28000	2620
2	7	1200				80			20	20	2640	2500
3			80			120			40			3120
4		4000	240			8000			40		2680	3400
5			200			40			40			3720
6		12000				80			20	20	2820	3900
7				120			160		40			4220
8			40	80			160		4000			4540
9		40		80			160		4000		2860	4820
10				120			160		4000			5140
11		40		80	40		120		4000		2860	5420
12		280								4000	3220	
13		160						120	20	20	3400	5560
14		160						120	20	20	3580	5700
15		160		40		40	40		20	20	3760	5440
16		240					40			40	4040	5880
17		200					80			40	4280	5960
18		160					120			40	4480	6050
19		160	40				80		40		4640	6280
20				40	80		80	40	40		4880	6560
21		200					80			40	4880	6560
22		200					80			40	5160	6720
23		200			80					40	5400	6800
24		40			80				120	40	5440	7000
25		200						40		40	5680	7240
26		160							80	40	5880	7120
27		160							80	40	6050	7200
28		160							80	40	6280	7280
29		160							80	40	6480	7360
30		240								80	6560	

July Personal

	1	2	3	4	5	6	7	8	9	10	Total	Total
July Personal	5310	5308									5310	5308
		Ken	Ben	Jeanette	Windy	Yogi	Yuk	Jane	Cook	Cook	#6560	#7360
	240								40		6940	
				240						40	7040	7640
	160		80						40		7040	
	240								40		7320	
	200								40		7520	
	200								40		7500	
	200								40		7040	
	200								40		5280	
	200								40		8520	
	200								40		8760	
	315								40		9115	
	160			115		40			40		9315	7795
	200						115		40		9555	7910
Slats Ch mon & CW SLATSCK	200								40		9795	8025
	40			200					40		9875	8225
SWITCHED TO NEW SHEET			16+									

JULY PERSONEL AFTER JULY 16

	1	2	3	4	5	6	7	8	9	10	11	12
	5310	A BEU	SLATS	LAURA	BUH.	JANE	YUK	YOGI			5310	5308
1												
2												
3												
4												
5												
6												
7												
8												
9												
10												
11												
12												
13												
14	MDM + CW			115.00								
15											9875	9225
16	Costo salary on leave or leave after 16	40	80		80	80					9915	9465
17		240	40								10155	9505
18				280								9785
19		80				40	120				10235	9945
20				120	120							9185
21			120	120								9125
22		160						80			10395	9505
23		40	40			160					10555	9745
24		160				80					10595	9785
25		240									10835	
26		90				200					10875	9955
27		80					160				10955	10145
28		240									11195	
29		240									11435	
30		240									11675	
31		240									11915	
32												
33												
34												
35												
36												
37												
38												
39												
40												

May Helicopter

	1	2	3	4	5	6	7	8	9	10	11	12
May Helicopter as applied to claims	5310	5308 Ken	Ben	Janette	Andy	Yogi	Yuk	General				
1												
2												
3												
4												
5												
6												
7												
8												
9												
10												
11												
12												
13												
14												
15												
16												
17												
18												
19												
20		276										
21									230			
22		437										
23		368										
24		115							253			
25		322	46	184								
26		736		207								
27				230			299					
28			253	322								
29			46	46	207	207						
30		297.50							282.50			
31		139	161		115							
32		2679.50	460	989	322	207	299		770.50			
33												
34									3047.50	Total Claims		
35									5727.00	Total Contract for May		
36												
37												
38												
39												
40												

June Helicopter

	1	2	3	4	5	6	7	8	9	10	11	12	
June Helicopter	5310	5308 Ken	Bev	Jeanette	Windy	Yogi	Yuk	Jane			Totals 5310	Totals 5308	
1	230.00			149.50	149.50						Carroll Forward	2699.50	3047.50
2	460			138	138								
3	184			23	23								
4	115	322											
5		391											
6	713			115	115								
7			299					230					
8	437	115						276					
9	529		115					184					
10	690		161					207					
11													
12	1495												
13	460												
14	483							322					
15	391							161					
16	1012												
17	1679								253		8878	3887	
18	460								230		11577.50	6345.00	
19	529	12650							126.50				
20											12586.50	7417.50	
21	144					207					13302.50	7624.50	
22	736					194					13647.50	7508.50	
23	345										14958.50	8015.50	
24	1311			207							15878.50	8498.50	
25	736			115						36.8	17304.50	8654.50	
26	1426									161	17649.50	8981.50	
27	345									322	17971.50	9303.50	
28	920									7	18078.50	9310.50	
29	920									713	18791.50	9994.50	
30	320									322	19113.50	10016.50	
31	322									644	19757.50	10660.50	
32													
33													
34													
35													
36													
37													
38													
39													
40													

Red  
Jan 24

July Helicopter

	1	2	3	4	5	6	7	8	9	10	11
July Helicopter	5310	5308 Ken	Ben	Jeanette	Wendy	Lygo	Yuk	Jane	Slatsch	Total	Total
	101200		158							20223	10795
	960									20083	
	506		184							21189	10982
206 B from Kuni lb TNTA	319									21508	
206 B FORESTRY TNTA	1102									22610	
206 B " TNTA	1160									23770	
Add in 1.1 hrs for July 4	253									24023	
	1974									26001	
	1426									26000	
	736		115							27427	
	1196	92								28163	11097
	1012						138			29359	11327
	529		299						322	30371	11649
										30900	11948
new sheet started July 16											

July Helicopter after July 15

	1	2	3	4	5	6	7	8	9	10	11	12
	5310	5308 Bav	llato	Laura	BUH	YUK	YOGI	JANE		5310	5308	
1												
2												
3												
4												
5												
6												
7												
8												
9												
10												
11												
12												
13												
14												
15												
16		575		276						31495	12224	
17		23	46		161					31498	12431	
18					782						13215	
19		276					230			31774	13443	
20					598	276	<del>230</del>				14317	
21			115		<del>598</del>	276					14915	
22		1012			<del>598</del>			115		32786	15030	
23		207	138			460				32993	15628	
24		391								33384		
25		529				<del>322</del>				33713		
26						322					15950	
27			138			207			644		16939	
28		736	129							34649		
29		805								35454		
30		667								36121		
31		1265								37386		
32												
33												
34												
35												
36												
37												
38												
39												
40												

**FLIGHT REPORT**  
 TRANSWEST HELICOPTERS (1965) LTD.  
 2792 NORLAND AVE., BURNABY, B.C. V5B 3A8

04005

CHARTERER GREAT PLAINS DATE 5/23/75  
 ADDRESS \_\_\_\_\_ A/C \_\_\_\_\_ CF DNV  
 PILOT SIGNATURE Michael Hlus BASE MARGARET LK FUEL \_\_\_\_\_ CUST  TW

OPERATION REMARKS	PASS	TAKE OFF	LAND	WT OF CARGO	HOURS	MIN.
KIWE LAKE 5310					0	4
SLING SUPPLIES FROM LAKE 5310					1	2
30 GAL FUEL USED						
TYPE OF CONTRACT 1 <input type="checkbox"/> 2A <input type="checkbox"/> 2B <input type="checkbox"/> OTHER _____						
AUTHORIZED BY CHARTERER REP. <u>[Signature]</u>			HOURS FOR DAY <u>1.6</u> " MONTH <u>5.7</u> " CONTRACT _____			

**FLIGHT REPORT**  
 TRANSWEST HELICOPTERS (1965) LTD.  
 2792 NORLAND AVE., BURNABY, B.C. V5B 3A8

04003

CHARTERER GREAT PLAINS DATE 5/21/75  
 ADDRESS \_\_\_\_\_ A/C \_\_\_\_\_ CF DNV  
 PILOT SIGNATURE Michael Hlus BASE MARGARET LK FUEL \_\_\_\_\_ CUST  TW

OPERATION REMARKS	PASS	TAKE OFF	LAND	WT OF CARGO	HOURS	MIN.
SLING FUEL FROM LAKE 5308					0	8
SUPPLIES FROM KIWE LAKE 5309					0	2
20 GAL FUEL USED						
TYPE OF CONTRACT 1 <input type="checkbox"/> 2A <input type="checkbox"/> 2B <input type="checkbox"/> OTHER _____						
AUTHORIZED BY CHARTERER REP. <u>[Signature]</u>			HOURS FOR DAY <u>1.0</u> " MONTH <u>2.2</u> " CONTRACT _____			

**FLIGHT REPORT**  
 TRANSWEST HELICOPTERS (1965) LTD.  
 2792 NORLAND AVE., BURNABY, B.C. V5B 3A8

04006

CHARTERER GREAT PLAINS DATE 5/22/75  
 ADDRESS \_\_\_\_\_ A/C \_\_\_\_\_ CF DNV  
 PILOT SIGNATURE Michael Hlus BASE MARGARET LK FUEL \_\_\_\_\_ CUST  TW

OPERATION REMARKS	PASS	TAKE OFF	LAND	WT OF CARGO	HOURS	MIN.
SLING SUPPLIES FROM LAKE 5310					1	9
38 GAL FUEL						
TYPE OF CONTRACT 1 <input type="checkbox"/> 2A <input type="checkbox"/> 2B <input type="checkbox"/> OTHER _____						
AUTHORIZED BY CHARTERER REP. <u>[Signature]</u>			HOURS FOR DAY <u>1.9</u> " MONTH <u>4.1</u> " CONTRACT _____			

**FLIGHT REPORT**  
 TRANSWEST HELICOPTERS (1965) LTD.  
 2792 NORLAND AVE., BURNABY, B.C. V5B 3A8

*Michael Hlus file 002*

CHARTERER GREAT PLAINS DATE 5/20/75  
 ADDRESS \_\_\_\_\_ A/C \_\_\_\_\_ CF DNV  
 PILOT SIGNATURE Michael Hlus BASE MARGARET LK FUEL \_\_\_\_\_ CUST  TW

OPERATION REMARKS	PASS	TAKE OFF	LAND	WT OF CARGO	HOURS	MIN.
FERRY FLT FROM MAYO TO MARGARET LAKE 5310					1	2
TYPE OF CONTRACT 1 <input type="checkbox"/> 2A <input type="checkbox"/> 2B <input type="checkbox"/> OTHER _____						
AUTHORIZED BY CHARTERER REP. <u>[Signature]</u>			HOURS FOR DAY <u>1.2</u> " MONTH _____ " CONTRACT _____			



**FLIGHT REPORT**  
**TRANSWEST HELICOPTERS (1965) LTD.**  
 2792 NORLAND AVE., BURNABY, B.C. V5B 3A6

04014

CHARTERER GREAT PLAINS DATE 5/31/75  
 ADDRESS 736 8<sup>TH</sup> AVE SW, CALGARY ALBERTA A/C CF-DNV  
 PILOT SIGNATURE Michael Hux BASE MARGARET R FUEL CUST  TW

OPERATION REMARKS	PASS	TAKE OFF	LAND	WT OF CARGO	HOURS	MIN.
KAPITAN PECKER 5308					0	7
JEANETTE 5308					0	5
WINDY RIVER 5310					0	6
TYPE OF CONTRACT <input type="checkbox"/> 1 <input type="checkbox"/> 2A <input type="checkbox"/> 2B <input type="checkbox"/> OTHER _____						
AUTHORIZED BY CHARTERER/REP: <i>Bill Jarion</i>			HOURS FOR DAY <u>1.8</u> " MONTH <u>21.9</u> " CONTRACT _____			

**FLIGHT REPORT**  
**TRANSWEST HELICOPTERS (1965) LTD.**  
 2792 NORLAND AVE., BURNABY, B.C. V5B 3A6

04012

CHARTERER GREAT PLAINS DATE 5/29/75  
 ADDRESS 736 8<sup>TH</sup> AVE SW, CALGARY ALBERTA A/C CF-DNV  
 PILOT SIGNATURE Michael Hux BASE MARGARET R FUEL CUST  TW

OPERATION REMARKS	PASS	TAKE OFF	LAND	WT OF CARGO	HOURS	MIN.
FLY CAMPS BEY, YOZI, JEANETTE, WINDY AND RECON 5308					2	2
TYPE OF CONTRACT <input type="checkbox"/> 1 <input type="checkbox"/> 2A <input type="checkbox"/> 2B <input type="checkbox"/> OTHER _____						
AUTHORIZED BY CHARTERER/REP: <i>Bill Jarion</i>			HOURS FOR DAY <u>2.2</u> " MONTH <u>20.6</u> " CONTRACT _____			

**FLIGHT REPORT**  
**TRANSWEST HELICOPTERS (1965) LTD.**  
 2792 NORLAND AVE., BURNABY, B.C. V5B 3A6

04013

CHARTERER GREAT PLAINS DATE 5/30/75  
 ADDRESS 736 8<sup>TH</sup> AVE SW, CALGARY ALBERTA A/C CF-DNV  
 PILOT SIGNATURE Michael Hux BASE MARGARET R FUEL CUST  TW

OPERATION REMARKS	PASS	TAKE OFF	LAND	WT OF CARGO	HOURS	MIN.
FLY TO MARG AND RECON MARGARET					2	5
5310 5020 5308 5020						
TYPE OF CONTRACT <input type="checkbox"/> 1 <input type="checkbox"/> 2A <input type="checkbox"/> 2B <input type="checkbox"/> OTHER _____						
AUTHORIZED BY CHARTERER/REP: <i>Bill Jarion</i>			HOURS FOR DAY <u>2.5</u> " MONTH <u>23.1</u> " CONTRACT _____			

**FLIGHT REPORT**  
**TRANSWEST HELICOPTERS (1965) LTD.**  
 2792 NORLAND AVE., BURNABY, B.C. V5B 3A6

04011

CHARTERER GREAT PLAINS DATE 5/28/75  
 ADDRESS 736 8<sup>TH</sup> AVE SW, CALGARY ALBERTA A/C CF-DNV  
 PILOT SIGNATURE Michael Hux BASE MARGARET R FUEL CUST  TW

OPERATION REMARKS	PASS	TAKE OFF	LAND	WT OF CARGO	HOURS	MIN.
FLY CAMP, BONNET, RECON 5308					1	4
RECON 5308					1	1
TYPE OF CONTRACT <input type="checkbox"/> 1 <input type="checkbox"/> 2A <input type="checkbox"/> 2B <input type="checkbox"/> OTHER _____						
AUTHORIZED BY CHARTERER/REP: <i>Bill Jarion</i>			HOURS FOR DAY <u>2.5</u> " MONTH <u>18.9</u> " CONTRACT _____			

**FLIGHT REPORT**  
 TRANSWEST HELICOPTERS (1965) LTD.  
 2792 NORLAND AVE., BURNABY, B.C. V5B 3A8

04015

CHARTERER CHLOE PUGH DATE 6/1/75  
 ADDRESS 736 2<sup>ND</sup> AVE SW CALGARY ALBERTA A/C CF-DNV  
 PILOT SIGNATURE Michael Hiron BASE MARGARET RIVER FUEL CUST  TW

OPERATION REMARKS	PASS	TAKE OFF	LAND	WT OF CARGO	HOURS	MIN.
JEANETTE WINDY 5308					1	3
WIND RIVER 5310					1	0

TYPE OF CONTRACT 1  2A  2B   
 OTHER \_\_\_\_\_ AUTHORIZED BY CHARTERER, REP. Bill Hiron  
 HOURS FOR DAY 2.3  
 " MONTH 27.2  
 " CONTRACT \_\_\_\_\_

**FLIGHT REPORT**  
 TRANSWEST HELICOPTERS (1965) LTD.  
 2792 NORLAND AVE., BURNABY, B.C. V5B 3A8

04017

CHARTERER GREAT PLAINS DATE 6/3/75  
 ADDRESS 736 8<sup>TH</sup> AVE SW CALGARY ALBERTA A/C CF-DNV  
 PILOT SIGNATURE Michael Hiron BASE MARGARET RIVER FUEL CUST  TW

OPERATION REMARKS	PASS	TAKE OFF	LAND	WT OF CARGO	HOURS	MIN.
WIND RIVER, (RTRN, WEATHER) 5310					0	3
JEANETTE, WINDY (RTRN, WEATHER) 5308					0	2
WIND RIVER (RTRN WEATHER) 5310					0	5

TYPE OF CONTRACT 1  2A  2B   
 OTHER \_\_\_\_\_ AUTHORIZED BY CHARTERER, REP. Bill Hiron  
 HOURS FOR DAY 1.0  
 " MONTH 31.4  
 " CONTRACT \_\_\_\_\_

**FLIGHT REPORT**  
 TRANSWEST HELICOPTERS (1965) LTD.  
 2792 NORLAND AVE., BURNABY, B.C. V5B 3A8

04016

CHARTERER GREAT PLAINS DATE 6/2/75  
 ADDRESS 736 8<sup>TH</sup> AVE SW CALGARY ALBERTA A/C CF-DNV  
 PILOT SIGNATURE Michael Hiron BASE MARGARET RIVER FUEL CUST  TW

OPERATION REMARKS	PASS	TAKE OFF	LAND	WT OF CARGO	HOURS	MIN.
WIND RIVER 5310					2	0
JEANETTE AND WINDY 5308					1	2

TYPE OF CONTRACT 1  2A  2B   
 OTHER \_\_\_\_\_ AUTHORIZED BY CHARTERER, REP. Bill Hiron  
 HOURS FOR DAY 3.2  
 " MONTH 30.4  
 " CONTRACT \_\_\_\_\_

**FLIGHT REPORT**  
 TRANSWEST HELICOPTERS (1965) LTD.  
 2792 NORLAND AVE., BURNABY, B.C. V5B 3A8

04018

CHARTERER GREAT PLAINS DATE 6/4/75  
 ADDRESS 736 8<sup>TH</sup> AVE SW CALGARY ALBERTA A/C CF-DNV  
 PILOT SIGNATURE Michael Hiron BASE MARGARET RIVER FUEL CUST  TW

OPERATION REMARKS	PASS	TAKE OFF	LAND	WT OF CARGO	HOURS	MIN.
KEN CLAIMS 5308					1	4
SLING BARRELS FROM OLD CAMP SITE 5310					0	5

TYPE OF CONTRACT 1  2A  2B   
 OTHER \_\_\_\_\_ AUTHORIZED BY CHARTERER, REP. Bill Hiron  
 HOURS FOR DAY 1.9  
 " MONTH 33.3  
 " CONTRACT \_\_\_\_\_

**FLIGHT REPORT**  
 TRANSWEST HELICOPTERS (1965) LTD.  
 2792 NORLAND AVE., BURNABY, B.C. V5B 3A6

04024

CHARTERER GREAT PLAINS DATE 6/8/75  
 ADDRESS 736 8<sup>TH</sup> AVE SW CALGARY, ALBERTA A/C CF - DNU  
 PILOT SIGNATURE Michael Klein BASE MARGARET RIC FUEL CUST  TW

OPERATION REMARKS	PASS	TAKE OFF	LAND	WT OF CARGO	HOURS	MIN.
<del>BOY</del> CLAIMS 5308					0	8
KEN CLAIMS 5308					0	5
<del>BOY</del> CLAIMS 5308					0	4
WIND RIVER 5310					1	9
TYPE OF CONTRACT 1 <input type="checkbox"/> 2A <input type="checkbox"/> 2B <input type="checkbox"/> OTHER _____						
AUTHORIZED BY CHARTERER REP. <i>Bill Janion</i>			HOURS FOR DAY <u>3.6</u> " MONTH <u>45.0</u> " CONTRACT _____			

**FLIGHT REPORT**  
 TRANSWEST HELICOPTERS (1965) LTD.  
 2792 NORLAND AVE., BURNABY, B.C. V5B 3A6

04020

CHARTERER GREAT PLAINS DATE 6/5/75  
 ADDRESS 736 8<sup>TH</sup> AVE SW CALGARY, ALBERTA A/C CF - DNU  
 PILOT SIGNATURE Michael Klein BASE MARGARET RIC FUEL CUST  TW

OPERATION REMARKS	PASS	TAKE OFF	LAND	WT OF CARGO	HOURS	MIN.
KEN CLAIMS 5308					1	7
TYPE OF CONTRACT 1 <input type="checkbox"/> 2A <input type="checkbox"/> 2B <input type="checkbox"/> OTHER _____						
AUTHORIZED BY CHARTERER REP. <i>Bill Janion</i>			HOURS FOR DAY <u>1.7</u> " MONTH <u>35.0</u> " CONTRACT _____			

**FLIGHT REPORT**  
 TRANSWEST HELICOPTERS (1965) LTD.  
 2792 NORLAND AVE., BURNABY, B.C. V5B 3A6

04023

CHARTERER GREAT PLAINS DATE 6/7/75  
 ADDRESS 736 8<sup>TH</sup> AVE SW CALGARY, ALBERTA A/C CF - DNU  
 PILOT SIGNATURE Michael Klein BASE MARGARET RIC FUEL CUST  TW

OPERATION REMARKS	PASS	TAKE OFF	LAND	WT OF CARGO	HOURS	MIN.
YOYI CLAIM 5308					1	0
REV CLAIM 5308					1	3
TYPE OF CONTRACT 1 <input type="checkbox"/> 2A <input type="checkbox"/> 2B <input type="checkbox"/> OTHER _____						
AUTHORIZED BY CHARTERER REP. <i>Bill Janion</i>			HOURS FOR DAY <u>2.3</u> " MONTH <u>41.4</u> " CONTRACT _____			

**FLIGHT REPORT**  
 TRANSWEST HELICOPTERS (1965) LTD.  
 2792 NORLAND AVE., BURNABY, B.C. V5B 3A6

04022

CHARTERER GREAT PLAINS DATE 6/6/75  
 ADDRESS 736 8<sup>TH</sup> AVE SW CALGARY, ALBERTA A/C CF - DNU  
 PILOT SIGNATURE Michael Klein BASE MARGARET RIC FUEL CUST  TW

OPERATION REMARKS	PASS	TAKE OFF	LAND	WT OF CARGO	HOURS	MIN.
JEANNETTE & WINDY 5308					1	0
WIND RIVER 5310					1	6
SNAKE RIVER 5310					1	5
TYPE OF CONTRACT 1 <input type="checkbox"/> 2A <input type="checkbox"/> 2B <input type="checkbox"/> OTHER _____						
AUTHORIZED BY CHARTERER REP. <i>Bill Janion</i>			HOURS FOR DAY <u>4.1</u> " MONTH <u>39.1</u> " CONTRACT _____			



**FLIGHT REPORT**

TRANSWEST HELICOPTERS (1965) LTD.  
2792 NORLAND AVE., BURNABY, B.C. V5B 3A6

04035

CHARTERER GREAT PLAINS DATE 6/17/75  
ADDRESS 736 8<sup>TH</sup> AVE SW CALGARY, ALBERTA A/C CF-DNV  
PILOT SIGNATURE Muhammad Khan BASE MARGARET LK FUEL CUST  TW

OPERATION REMARKS	PASS	TAKE OFF	LAND	WT OF CARGO	HOURS	MIN.
YUK CLAIMS (5308)					1	1
WIND RIVER, SLAKS CK RECON (5310)					2	2
BEAR RIVER RECON (5310)					1	6
SLING FUEL TO HARRISON CK RTN (5310) MARGARET LK					1	4
LITTLE WIND (5310)					2	1

TYPE OF CONTRACT 1  2A  2B   
OTHER \_\_\_\_\_

AUTHORIZED BY CHARTERER REP. B. L. Harrison

HOURS FOR DAY 7.4  
" MONTH 80.4  
" CONTRACT 80.4

**FLIGHT REPORT**

TRANSWEST HELICOPTERS (1965) LTD.  
2792 NORLAND AVE., BURNABY, B.C. V5B 3A6

04033

CHARTERER GREAT PLAINS DATE 6/15/75  
ADDRESS 736 8<sup>TH</sup> AVE SW CALGARY, ALBERTA A/C CF-DNV  
PILOT SIGNATURE Muhammad Khan BASE MARGARET LK FUEL CUST  TW

OPERATION REMARKS	PASS	TAKE OFF	LAND	WT OF CARGO	HOURS	MIN.
SLAKS CK (5310)					1	0
SLING LUMBER FOR DOCK (5310)					0	7

TYPE OF CONTRACT 1  2A  2B   
OTHER \_\_\_\_\_

AUTHORIZED BY CHARTERER REP. B. L. Harrison

HOURS FOR DAY 1.7  
" MONTH 68.6  
" CONTRACT \_\_\_\_\_

**FLIGHT REPORT**

TRANSWEST HELICOPTERS (1965) LTD.  
2792 NORLAND AVE., BURNABY, B.C. V5B 3A6

04034

CHARTERER GREAT PLAINS DATE 6/16/75  
ADDRESS 736 8<sup>TH</sup> AVE SW CALGARY, ALBERTA A/C CF-DNV  
PILOT SIGNATURE Muhammad Khan BASE MARGARET LK FUEL CUST  TW

OPERATION REMARKS	PASS	TAKE OFF	LAND	WT OF CARGO	HOURS	MIN.
LITTLE WIND #9 (5310)					1	8
MAYO RTN MARGARET LK (5310)					2	6

TYPE OF CONTRACT 1  2A  2B   
OTHER \_\_\_\_\_

AUTHORIZED BY CHARTERER REP. B. L. Harrison

HOURS FOR DAY 4.4  
" MONTH 73.0  
" CONTRACT \_\_\_\_\_

**FLIGHT REPORT**

TRANSWEST HELICOPTERS (1965) LTD.  
2792 NORLAND AVE., BURNABY, B.C. V5B 3A6

04032

CHARTERER GREAT PLAINS DATE 6/14/75  
ADDRESS 736 8<sup>TH</sup> AVE SW CALGARY, ALBERTA A/C CF-DNV  
PILOT SIGNATURE Muhammad Khan BASE MARGARET LK FUEL CUST  TW

OPERATION REMARKS	PASS	TAKE OFF	LAND	WT OF CARGO	HOURS	MIN.
KEN CLAIMS RECON (5310)					0	6
YUK CLAIMS (5308)					0	7
SLAKS CK (5310)					1	5

TYPE OF CONTRACT 1  2A  2B   
OTHER \_\_\_\_\_

AUTHORIZED BY CHARTERER REP. B. L. Harrison

HOURS FOR DAY 2.8  
" MONTH 66.9  
" CONTRACT \_\_\_\_\_

**FLIGHT REPORT**  
**TRANSWEST HELICOPTERS (1965) LTD.**  
 2792 NORLAND AVE., BURNABY, B.C. V5B 3A6

04040

CHARTERER GREAT PLAINS DATE 6/20/75  
 ADDRESS 736 8<sup>TH</sup> AVE SW, CALGARY, ALBERTA A/C CF-DH BWH  
 PILOT SIGNATURE Michael Hill BASE MARGARET LC FUEL CUST  TW

OPERATION REMARKS	PASS	TAKE OFF	LAND	WT OF CARGO	HOURS	MIN.
WINDY CLAIMS (5308)					0	9
KINDRE CL (5310)					0	9
WIND RIVER RECON (5310)					2	3
FLT REPORT #04039 MISSING BECAUSE OF ERROR						
TYPE OF CONTRACT 1 <input type="checkbox"/> 2A <input type="checkbox"/> 2B <input type="checkbox"/>		AUTHORIZED BY CHARTERER REP. <u>Bill Jarvis</u>		HOURS FOR DAY <u>4.1</u>		
OTHER _____				" MONTH <u>7.5</u>		
				" CONTRACT <u>94.3</u>		

**FLIGHT REPORT**  
**TRANSWEST HELICOPTERS (1965) LTD.**  
 2792 NORLAND AVE., BURNABY, B.C. V5B 3A6

04037

CHARTERER GREAT PLAINS DATE 6/19/75  
 ADDRESS 736 8<sup>TH</sup> AVE SW, CALGARY, ALBERTA A/C CF-DH  
 PILOT SIGNATURE Michael Hill BASE MARGARET LC FUEL CUST  TW

OPERATION REMARKS	PASS	TAKE OFF	LAND	WT OF CARGO	HOURS	MIN.
KEN AND <del>YUK</del> CLAIMS (5308)					1	1
LITTLE WIND RIVER (5310)					2	3
TYPE OF CONTRACT 1 <input type="checkbox"/> 2A <input type="checkbox"/> 2B <input type="checkbox"/>						
OTHER _____		AUTHORIZED BY CHARTERER REP. <u>Bill Jarvis</u>		HOURS FOR DAY <u>3.4</u>		
				" MONTH <u>3.4</u>		
				" CONTRACT <u>36.8</u>		

**FLIGHT REPORT**  
**TRANSWEST HELICOPTERS (1965) LTD.**  
 2792 NORLAND AVE., BURNABY, B.C. V5B 3A6

04041

CHARTERER GREAT PLAINS DATE 6/20/75  
 ADDRESS 736 8<sup>TH</sup> AVE SW, CALGARY, ALBERTA A/C CF-BWH  
 PILOT SIGNATURE Michael Hill BASE MARGARET LC FUEL CUST  TW

OPERATION REMARKS	PASS	TAKE OFF	LAND	WT OF CARGO	HOURS	MIN.
MARGARET LC TO HARRISON CK 5310					0	8
SWAG SUPPLIES FROM PORTER 5309 PUDDLE TO HARRISON CK					0	8
TYPE OF CONTRACT 1 <input type="checkbox"/> 2A <input type="checkbox"/> 2B <input type="checkbox"/>						
OTHER _____		AUTHORIZED BY CHARTERER REP. <u>Bill Jarvis</u>		HOURS FOR DAY <u>1.6</u>		
				" MONTH <u>9.1</u>		
				" CONTRACT <u>95.9</u>		

**FLIGHT REPORT**  
**TRANSWEST HELICOPTERS (1965) LTD.**  
 2792 NORLAND AVE., BURNABY, B.C. V5B 3A6

04036

CHARTERER GREAT PLAINS DATE 6/18/75  
 ADDRESS 736 8<sup>TH</sup> AVE SW, CALGARY, ALBERTA A/C CF-DH  
 PILOT SIGNATURE Michael Hill BASE MARGARET LC FUEL CUST  TW

OPERATION REMARKS	PASS	TAKE OFF	LAND	WT OF CARGO	HOURS	MIN.
YUK CLAIMS (5308)					1	0
LITTLE WIND #5 (5310)					2	0
TYPE OF CONTRACT 1 <input type="checkbox"/> 2A <input type="checkbox"/> 2B <input type="checkbox"/>						
OTHER _____		AUTHORIZED BY CHARTERER REP. <u>Bill Jarvis</u>		HOURS FOR DAY <u>3.0</u>		
				" MONTH <u>83.4</u>		
				" CONTRACT <u>83.4</u>		



**FLIGHT REPORT**

TRANSWEST HELICOPTERS (1965) LTD.  
2792 NORLAND AVE., BURNABY, B.C. V5B 3A6

04071

CHARTERER GREAT PLAINS DATE 7/17/75  
ADDRESS 736 8TH AVE SW CALGARY ALBERTA A/C CF-BUH  
PILOT SIGNATURE Michael Klein BASE MARGARET LK FUEL CUST  TW

OPERATION REMARKS	PASS	TAKE OFF	LAND	WT OF CARGO	HOURS	MIN.
WEATHER CHECK (5310)					0	1
BSU (5308)					0	2
Laura (5310)					0	7
TYPE OF CONTRACT 1 <input type="checkbox"/> 2A <input type="checkbox"/> 2B <input type="checkbox"/> OTHER _____						

AUTHORIZED BY CHARTERER REP.  
B.L. Farion

HOURS FOR DAY 1.0  
" MONTH 102.4  
" CONTRACT 189.2

**FLIGHT REPORT**

TRANSWEST HELICOPTERS (1965) LTD.  
2792 NORLAND AVE., BURNABY, B.C. V5B 3A6

04074

CHARTERER GREAT PLAINS DATE 7/19/75  
ADDRESS 736 8TH AVE SW CALGARY ALBERTA A/C CF-BUH  
PILOT SIGNATURE Michael Klein BASE MARGARET LK FUEL CUST  TW

OPERATION REMARKS	PASS	TAKE OFF	LAND	WT OF CARGO	HOURS	MIN.
Laura claims (5310)					0	8
SLING FUEL					0	4
Yuk claims (5308)					1	0
TYPE OF CONTRACT 1 <input type="checkbox"/> 2A <input type="checkbox"/> 2B <input type="checkbox"/> OTHER _____						

AUTHORIZED BY CHARTERER REP.  
B.L. Farion

HOURS FOR DAY 2.2  
" MONTH 2.2  
" CONTRACT 194.8

**FLIGHT REPORT**

TRANSWEST HELICOPTERS (1965) LTD.  
2792 NORLAND AVE., BURNABY, B.C. V5B 3A6

04070

CHARTERER GREAT PLAINS DATE 7/16/75  
ADDRESS 736 8TH AVE SW CALGARY ALBERTA A/C CF-BUH  
PILOT SIGNATURE Michael Klein BASE MARGARET LK FUEL CUST  TW

OPERATION REMARKS	PASS	TAKE OFF	LAND	WT OF CARGO	HOURS	MIN.
SLATS CK (5310)					1	2
Max - Margaret Lk (5310)					2	5
TYPE OF CONTRACT 1 <input type="checkbox"/> 2A <input type="checkbox"/> 2B <input type="checkbox"/> OTHER _____						

AUTHORIZED BY CHARTERER REP.  
B.L. Farion

HOURS FOR DAY 3.7  
" MONTH 101.4  
" CONTRACT 188.2

**FLIGHT REPORT**

TRANSWEST HELICOPTERS (1965) LTD.  
2792 NORLAND AVE., BURNABY, B.C. V5B 3A6

04072

CHARTERER GREAT PLAINS DATE 7/18/75  
ADDRESS 736 8TH AVE SW CALGARY ALBERTA A/C CF-BUH  
PILOT SIGNATURE Michael Klein BASE MARGARET LK FUEL CUST  TW

OPERATION REMARKS	PASS	TAKE OFF	LAND	WT OF CARGO	HOURS	MIN.
Laura 4 TRIPS (5310)					3	4
TYPE OF CONTRACT 1 <input type="checkbox"/> 2A <input type="checkbox"/> 2B <input type="checkbox"/> OTHER _____						

AUTHORIZED BY CHARTERER REP.  
B.L. Farion

HOURS FOR DAY 3.4  
" MONTH 105.8  
" CONTRACT 192.6

**FLIGHT REPORT**

TRANSWEST HELICOPTERS (1965) LTD.  
2792 NORLAND AVE., BURNABY, B.C. V5B 3A6

04079

CHARTERER GREAT PLAINS DATE 7/23/75  
ADDRESS 736 8<sup>TH</sup> AVE SW CALGARY ALBERTA A/C CF-BUH  
PILOT SIGNATURE Michael Kluus BASE MARGARET LK FUEL CUST  TW

OPERATION REMARKS	PASS	TAKE OFF	LAND	WT OF CARGO	HOURS	MIN.
KIWI LAKE (5310)					0	9
BUH CLAIMS (5308)					2	0
BEV " (5308)					0	6
TYPE OF CONTRACT <input type="checkbox"/> 1 <input type="checkbox"/> 2A <input type="checkbox"/> 2B <input type="checkbox"/> OTHER _____						
AUTHORIZED BY CHARTERER REP. <i>Bill Linton</i>			HOURS FOR DAY <u>3.5</u> " MONTH <u>17.5</u> " CONTRACT <u>210.1</u>			

**FLIGHT REPORT**

TRANSWEST HELICOPTERS (1965) LTD.  
2792 NORLAND AVE., BURNABY, B.C. V5B 3A6

04077

CHARTERER GREAT PLAINS DATE 7/21/75  
ADDRESS 736 8<sup>TH</sup> AVE SW CALGARY ALBERTA A/C CF-BUH  
PILOT SIGNATURE Michael Kluus BASE MARGARET LK FUEL CUST  TW

OPERATION REMARKS	PASS	TAKE OFF	LAND	WT OF CARGO	HOURS	MIN.
Laura CLAIMS (5308)					2	6
BEV CLAIMS (5308)					0	35
TYPE OF CONTRACT <input type="checkbox"/> 1 <input type="checkbox"/> 2A <input type="checkbox"/> 2B <input type="checkbox"/> OTHER _____						
AUTHORIZED BY CHARTERER REP. <i>Bill Linton</i>			HOURS FOR DAY <u>3.1</u> " MONTH <u>9.1</u> " CONTRACT <u>20.07</u>			

**FLIGHT REPORT**

TRANSWEST HELICOPTERS (1965) LTD.  
2792 NORLAND AVE., BURNABY, B.C. V5B 3A6

04078

CHARTERER GREAT PLAINS DATE 7/22/75  
ADDRESS 736 8<sup>TH</sup> AVE SW CALGARY ALBERTA A/C CF-BUH  
PILOT SIGNATURE Michael Kluus BASE MARGARET LK FUEL CUST  TW

OPERATION REMARKS	PASS	TAKE OFF	LAND	WT OF CARGO	HOURS	MIN.
YOGI CLAIMS (5308)					0	5
WIND RIVER #11 (5310)					1	1
OGILVIE RIVER RECON (5310)					3	3
TYPE OF CONTRACT <input type="checkbox"/> 1 <input type="checkbox"/> 2A <input type="checkbox"/> 2B <input type="checkbox"/> OTHER _____						
AUTHORIZED BY CHARTERER REP. <i>Bill Linton</i>			HOURS FOR DAY <u>4.4</u> " MONTH <u>14.0</u> " CONTRACT <u>206.6</u>			

**FLIGHT REPORT**

TRANSWEST HELICOPTERS (1965) LTD.  
2792 NORLAND AVE., BURNABY, B.C. V5B 3A6

04076

CHARTERER GREAT PLAINS DATE 7/22/75  
ADDRESS 736 8<sup>TH</sup> AVE SW CALGARY ALBERTA A/C CF-BUH  
PILOT SIGNATURE Michael Kluus BASE MARGARET LK FUEL CUST  TW

OPERATION REMARKS	PASS	TAKE OFF	LAND	WT OF CARGO	HOURS	MIN.
Laura AND BUH CLAIMS (5308)					1	1
BUH CLAIMS (5308)					0	5
Laura " (5308)					0	3
BUH " (5308)					0	7
BUH AND Laura (5308)					1	2
TYPE OF CONTRACT <input type="checkbox"/> 1 <input type="checkbox"/> 2A <input type="checkbox"/> 2B <input type="checkbox"/> OTHER _____						
AUTHORIZED BY CHARTERER REP. <i>Bill Linton</i>			HOURS FOR DAY <u>2.8</u> " MONTH <u>6.0</u> " CONTRACT <u>18.6</u>			





GREAT PLAINS DEVELOPMENT COMPANY OF CANADA, LTD.  
**MACKENZIE PROJECT**

YUKON TERRITORY

**GEOLOGICAL SECTION**

PLATE 2

SECTION WINDY CLAIMS, SECTION CW1

LOCATION (1-14) 65°11'N 134°53'W




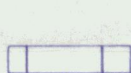
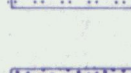
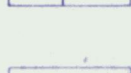

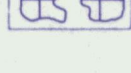
MARGARET LAKE CAMP

DATE JUNE, 1975

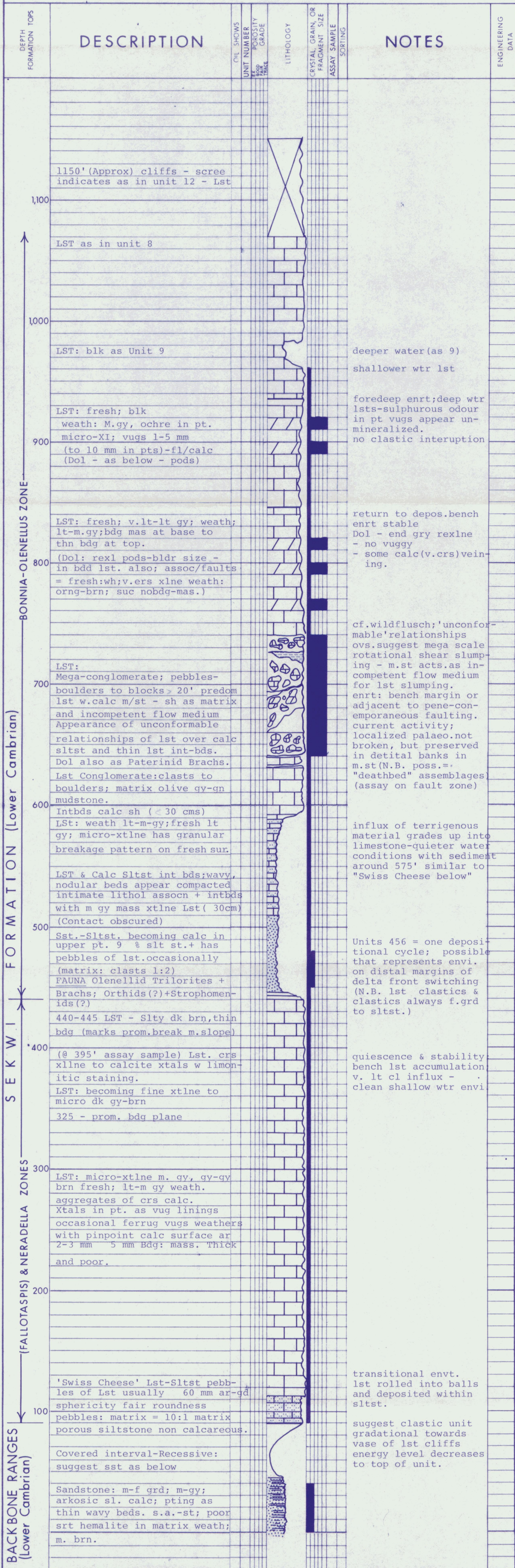
GEOLOGIST C. WINTER

**LEGEND**

LITHOLOGY

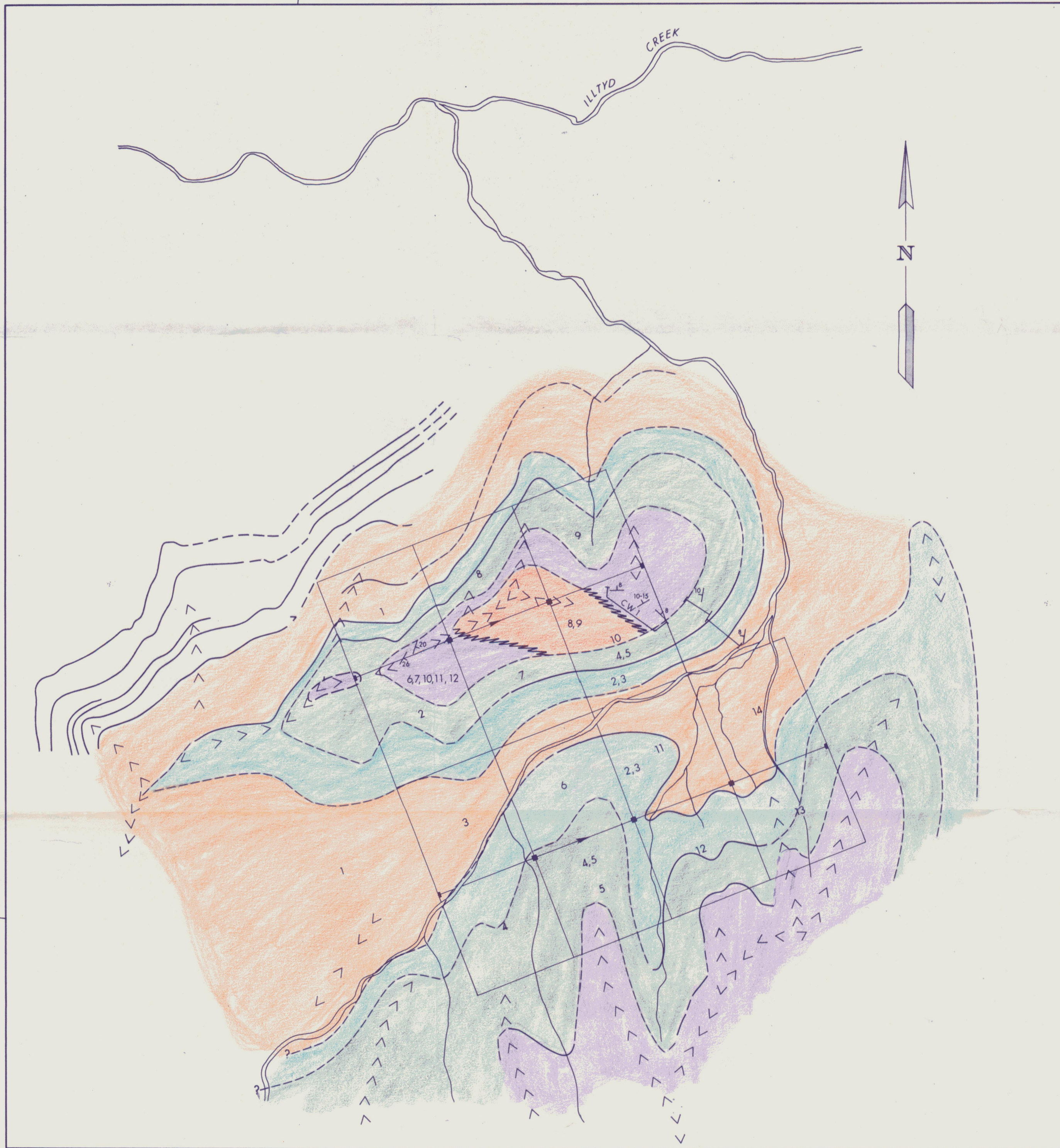
	SHALE		DOLOMITE
	SILTSTONE		LIMESTONE, HIGH ENERGY
	SANDSTONE		LIMESTONE, CONGLOMERATE
	CHERT		ANHYDRITE

**NOTES**



SEKW1 FORMATION (Lower Cambrian)  
 BONNIA-OLENELLUS ZONE  
 (FALLOTASPIS) & NERADELLA ZONES  
 BACKBONE RANGES (Lower Cambrian)

134° 55'



65° 10'

134° 55'

### LEGEND

- 10,11,12 LIMESTONE BLACK
- 8,9 9 LIMESTONE & DOLOMITE - DARK  
8 LIMESTONE & DOLOMITE - LIGHT
- 6,7 7 LIMESTONE - MEGACONGLOMERATE  
6 LIMESTONE
- 4,5 5 LIMESTONE & CALCAREOUS SILTSTONE  
4 SANDSTONE - SILTSTONE
- 2,3 3 LIMESTONE  
2 "SWISS CHEESE" LIMESTONE
- 1 SANDSTONE - QUARTZITIC

### SYMBOLS

- << >> RIDGES
- ~ STREAMS
- DEFINITE } GEOLOGICAL CONTACTS
- - - INDEFINITE }

PLATE 3



DEVELOPMENT COMPANY  
OF CANADA, LTD.

YUKON TERRITORY

## MACKENZIE PROJECT

WINDY CLAIMS

GEOLOGY

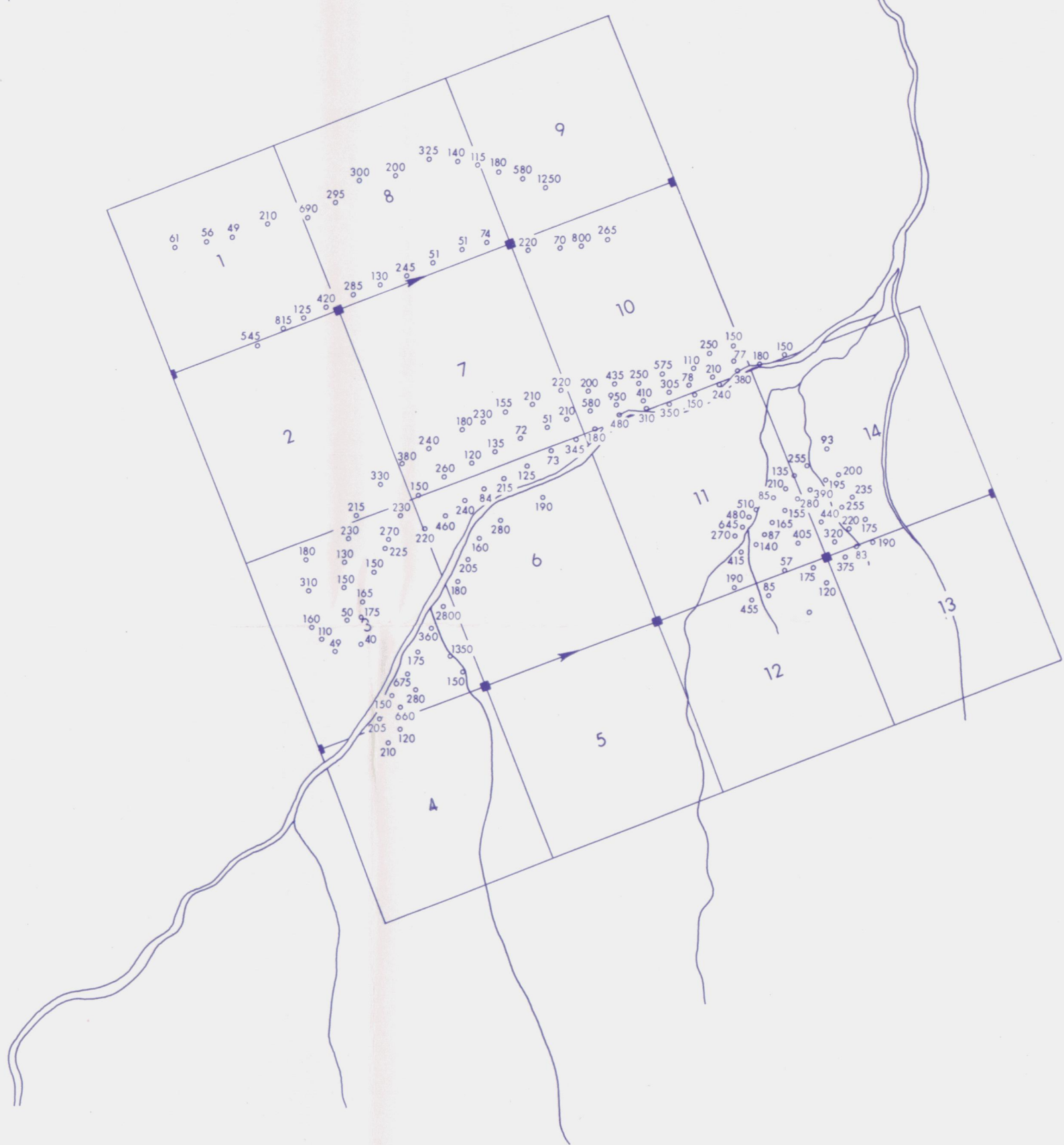


MAYO M.D.  
C. WINTER

N.T.S. : 106-E-2  
JUNE 1975

134°55'

ILLYD CREEK



65° 10'

134°55'

65° 10'

PLATE 4



DEVELOPMENT COMPANY OF CANADA, LTD.

YUKON TERRITORY

# MACKENZIE PROJECT

WINDY CLAIMS

Zn GEOCHEMISTRY

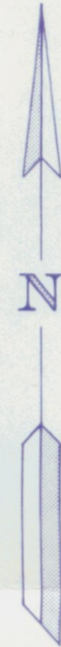


MAYO M.D.  
C. WINTER

N.T.S. : 106-E-2  
JUNE 1975

134°55'

ILLTYD CREEK



65° 10'

65° 10'

134° 55'

PLATE 5



DEVELOPMENT COMPANY OF CANADA, LTD.

YUKON TERRITORY

### MACKENZIE PROJECT

WINDY CLAIMS

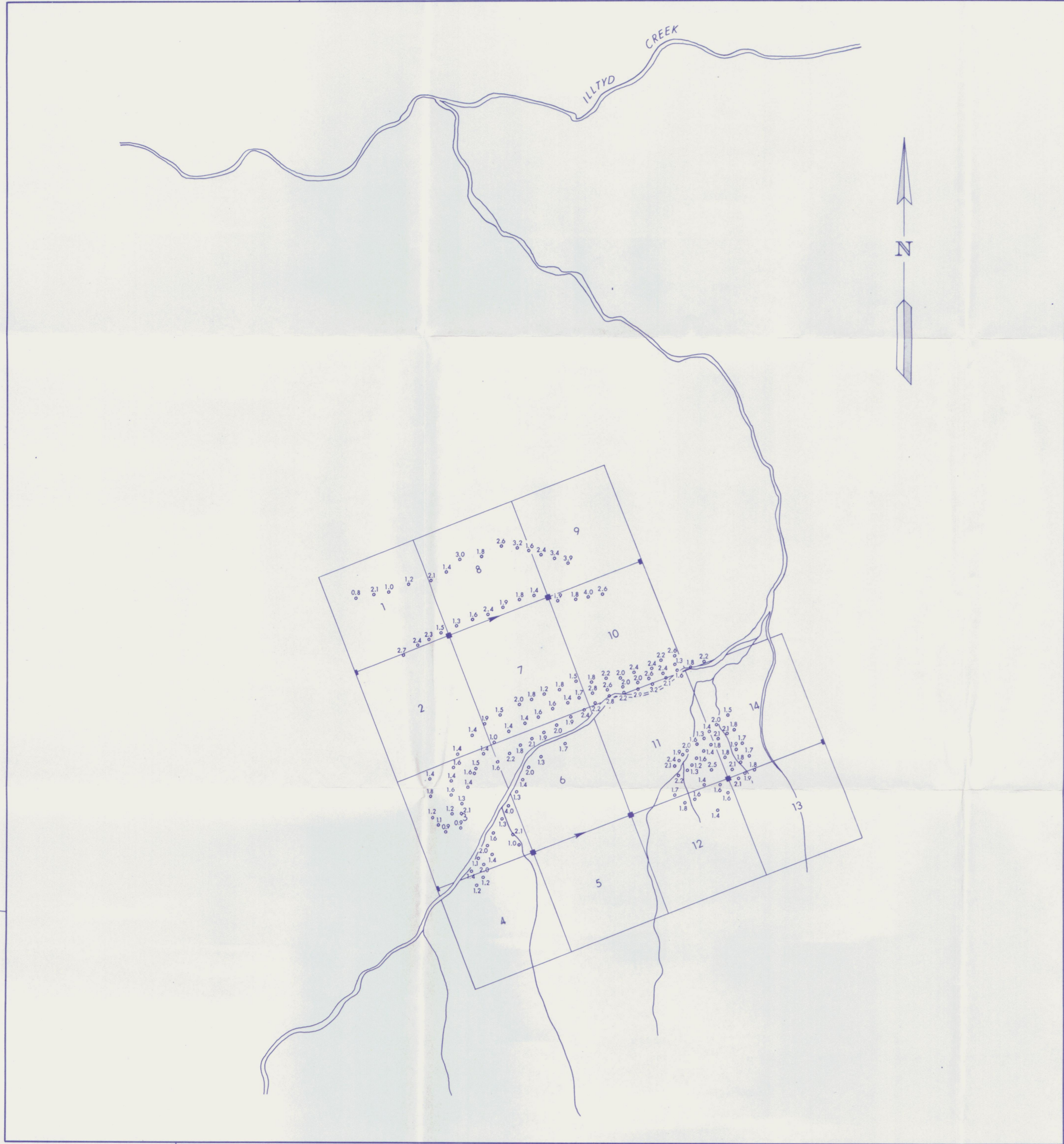
Pb GEOCHEMISTRY



MAYO M.D.  
C. WINTER

N.T.S. : 106-E-2  
JUNE 1975

134° 55'



65° 10'

134° 55'

65° 10'

PLATE 6



DEVELOPMENT COMPANY  
OF CANADA, LTD.

YUKON TERRITORY

**MACKENZIE PROJECT**

WINDY CLAIMS

Cd GEOCHEMISTRY



MAYO M.D.  
C. WINTER

N.T.S. : 106-E-2  
JUNE 1975