

PROSPECTUS
Sept. 2, 1988
062299

PULSE RESOURCES LTD.

GEOLOGICAL, GEOPHYSICAL &
GEOCHEMICAL REPORT
ON THE
BARB GROUP OF MINERAL CLAIMS,

FRANCES LAKE AREA,
YUKON TERRITORIES

N. Lat. 62° 28' W. Long 129° 25'

(NTS 105/H/6)

by

D. F. Symonds, B.Sc.
F. DiSpirito, B.A.Sc., P.Eng.

STRATO GEOLOGICAL ENGINEERING LTD.
3566 King George Highway
Surrey, British Columbia
V4A 5B6

August 10, 1987.



TABLE OF CONTENTS

	<u>PAGE</u>
1.0 INTRODUCTION	1
2.0 SUMMARY & CONCLUSIONS	2
3.0 LOCATION & ACCESS	4
4.0 CLAIM INFORMATION	6
5.0 GENERAL HISTORY OF PROPERTY	8
6.0 GEOLOGY	10
6.10 Previous Geological Work	
6.20 Regional Geology	
6.30 Local Geology	
7.0 GEOPHYSICS	15
7.10 Previous Geophysical Work	
7.20 Magnetic Survey	
8.0 GEOCHEMISTRY	18
8.10 Previous Geochemical Work	
8.20 Geochemical Survey	
9.0 GENERAL DISCUSSION OF RESULTS	24
10.0 CONCLUSIONS & RECOMMENDATIONS	25
11.0 ESTIMATED COST OF PROPOSED EXPLORATION PROGRAM	26

APPENDICES

- I CERTIFICATES
- II SURVEY SPECIFICATIONS (Magnetic Survey)
- III SURVEY SPECIFICATIONS (Geochemical Survey)
- IV BIBLIOGRAPHY
- V MAPS - Figures 6-2 through 8-5

LIST OF ILLUSTRATIONS

<u>FIGURE #</u>	<u>PAGE</u>
1 Location Map	5
4-1 Claim Map	7
6-1 Regional Geology	9
6-2 Local Geology (1:5000)	Appendix V
6-3 Drill Hole Location and Geology	follows page 13
7-1 Magnetic Survey Data (Main Survey - 1:5000)	Appendix V
7-1A Magnetic Survey Contour Map	"
7-2A Magnetic Survey Contour Map (Detail Area)	"
8-1 Anomalous Contours (Silver)	"
8-2 Anomalous Contours (Lead)	"
8-3 Anomalous Contours (Zinc)	"
8-4 Anomalous Contours (Copper)	"
8-5 Anomalous Contours (Arsenic)	"

1.0 INTRODUCTION

This report has been prepared by Strato Geological Engineering Ltd. on behalf of Pulse Resources Ltd. of Vancouver, B.C. The report describes geological, geophysical and geochemical work carried out during the month of July, 1987 on the BARB lead-zinc-silver property, located on the east shore of the east arm of Frances Lake, approximately 160 air-kilometers north of the town of Watson Lake, Yukon Territory (Figure 3-1). Recommendations are made for further work on the property and a cost estimate for the proposed exploration program is included.

2.0 SUMMARY & CONCLUSIONS

This report is based on field work carried out by Strato Geological Engineering Ltd. during July of 1987 on the Barb & Beth mineral claims, on behalf of Pulse Resources Ltd., of Vancouver, B.C. The claims are located on the east shore of the east arm of Frances Lake, approximately 160 air-kilometers north of the village of Watson Lake, Y.T. Access to the claims is by air from Watson Lake, using float-equipped aircraft, or alternately by road and water.

The area around the Barb & Beth claims has been prospected and explored since the discovery of lead-zinc-silver mineralization in the 1930's. Considerable geophysical, geochemical and geological surveying has been carried out on the property, including some 3900 meters of drilling.

The property consists of 51 mineral claims. The claim area is underlain largely by phyllitic rocks, with minor outcroppings of quartz augen schist. The property is located on the gently-dipping western limb of a north-northwest trending syncline which exhibits extensive deformation locally within the units.

The Matt Zone is a mineralized zone found near the shore of Frances Lake which has been largely delineated by drilling. The zone contains massive sulphide mineralization as argentiferous galena, sphalerite, pyrite, pyrrhotite, boulangerite, arsenopyrite and manganese siderite. The zone has an overall thickness of about 12 meters. An ore reserve figure for the zone has been calculated as 588,000 tons of 6.1% Pb, 4.6% Zn and 3.0 oz/ton Ag. This figure represents the total ore reserves for all classifications (Drill Indicated & Inferred).

The exploration program which was carried out during July of 1987 delineated magnetic and geochemical anomalies which require further investigation. An induced polarization orientation survey is recommended initially to test the effectiveness of the method over the known mineralized zone. If successful, this method is recommended to investigate the magnetic and geochemical anomalies. As an adjunct to a bulldozer trenching followup of any significant induced polarization anomalies, hammer seismic surveying is recommended to make most judicious use of bulldozer time. A second phase of proposed work would be contingent upon the success of the first phase program described above, and would consist of a drilling program to test favourable zones for depth and lateral extension.

The estimated cost to complete Phase I is \$90,000.00 and for Phase II is \$150,000.00.

3.0 LOCATION & ACCESS

LATITUDE: 62 degrees 28 minutes North
LONGITUDE: 129 degrees 25 minutes West
NTS: 105/H/6

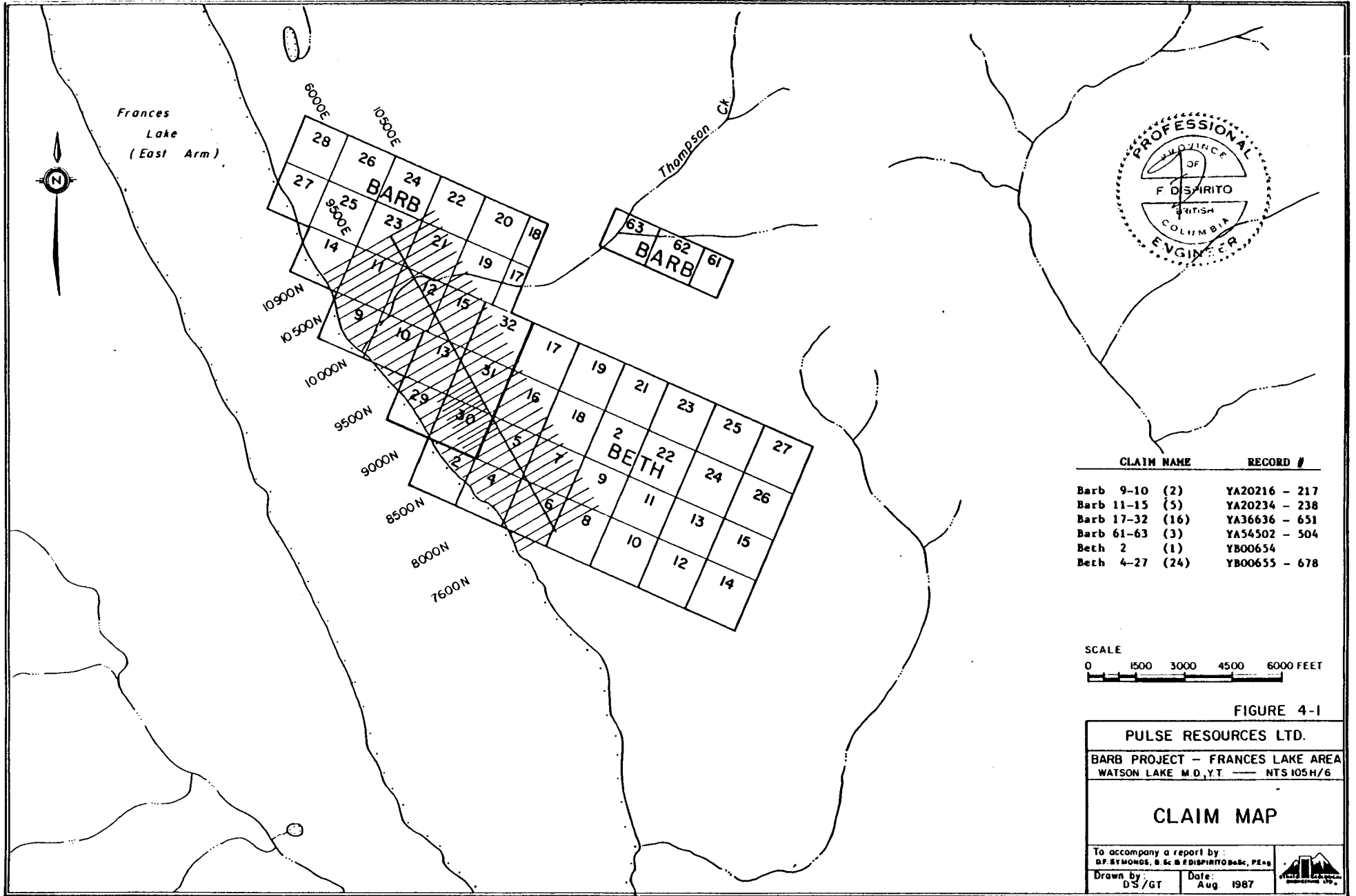
The Barb mineral claims are located on the east shore of the east arm of Frances Lake, approximately 160 air-kilometers north of the town of Watson Lake, Yukon Territory (Figure 3-1). The claims can be accessed using float-equipped aircraft from Watson Lake, or alternately by road and boat. The Campbell Highway travels along the west side of the west arm of Frances Lake. Boats can be put in at the campsite located approximately half-way up the west arm of the lake. The total trip entails approximately 160 kilometers of (gravel) road travel and 60 kilometers of water travel. The use of a small boat and motor on the project is strongly advised.

4.0 CLAIM INFORMATION

The property consists of 51 claims (Figure 4-1) as follows:

CLAIM(S)	RECORD #	RECORD DATE	DUE DATE
Barb 9 (1)	YA20216		19FEB92
Barb 10 (1)	YA20217		19FEB93
Barb 11-15 (5)	YA20234-238		19FEB92
Barb 17-32 (16)	YA36636-651		19FEB89
Barb 61-63 (3)	YA54502-504		19FEB90
Beth 2 (1)	YB00654	24JUL87	24JUL88
Beth 4-27 (24)	YB00655-678	24JUL87	24JUL88

The Beth 2 and 4-27 mineral claims are claims which Pulse Resources has caused to be staked. The claims are held currently by Paul W. Rogers pending transfer to Pulse Resources Ltd.



CLAIM NAME	RECORD #
Barb 9-10	(2) YA20216 - 217
Barb 11-15	(5) YA20234 - 238
Barb 17-32	(16) YA36636 - 651
Barb 61-63	(3) YA54502 - 504
Beth 2	(1) YB00654
Beth 4-27	(24) YB00655 - 678

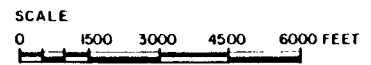


FIGURE 4-1

PULSE RESOURCES LTD.

BARB PROJECT - FRANCES LAKE AREA
WATSON LAKE M.D., Y.T. — NTS 105 H/6

CLAIM MAP

To accompany a report by:
D.F. SYMONDS, B.Sc. & F. DISPIRITO B.Sc., P.Eng.

Drawn by: DS/GT	Date: Aug 1987
--------------------	-------------------

5.0 GENERAL HISTORY

Lead-zinc-silver mineralization was first discovered in the claim area in the late 1930's and the area was prospected subsequently by Cominco in 1943. Hand trenching and sampling were carried out by Datalaska Mines in the early 1960's.

Matt Berry Mines Ltd. was formed in 1966 in order to develop the mineralized showing. Between 1966 and 1970 considerable work was carried out including hand trenching, VLF electromagnetic surveying, geochemical surveying, turam electromagnetic surveying and approximately 2728 meters of drilling.

In 1970, an additional 1282 feet of diamond drilling was carried out under an agreement with Metallgesellschaft Canada Ltd. and Canadian Nickel Company Ltd.

During 1973 an option was held on the property by New Joburke Explorations and in 1974, Cyprus Anvil Mining Corporation held an option on the property and carried out a gravity survey.

In 1978 the property was optioned to New Frontier (N.P.L.) and a pulse electromagnetic survey was carried out. The property subsequently reverted to Sovereign Metals Corp. (N.P.L.). A trenching program was carried out in 1979 and an ore reserve calculation was made. The property was optioned to Cominco Ltd. in 1980. During the 1980 season a drilling program was carried out. A total of 1219 meters were drilled in five widely-spaced holes which failed to intersect any mineralization of interest. During the 1981 field season, Cominco Ltd. carried out a program of 1:5000 scale geological mapping and soil/rock geochemical sampling. No further work was carried out on the property until the present time.



**PROPERTY
LOCATION**

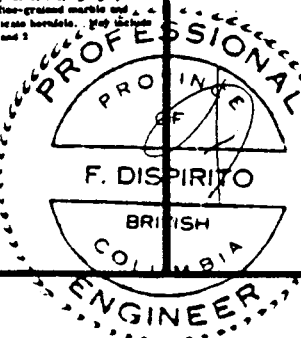
LEGEND	
QUATERNARY	16 Unconsolidated glacial and alluvial deposits
CRETACEOUS (?)	15 Fine- to medium-grained biotite-quartz monzonite, granodiorite, minor diorite and gneiss; 15a, fine- and medium-grained biotite hornblende quartz monzonite and granodiorite, in part porphyritic; 15b, hornblende gneiss
DEVONIAN AND MISSISSIPPIAN	13 Brown and black shale, black and grey siltstone, quartzite, greywacke, siltstone, argillite, and minor conglomerate; 13a, fine-grained light grey limestone and minor dolomite; 13b, greenstone; 13c, argonaceous
	14 Heavy brown weathering fine-grained schistose and spotted biotite hornblende, fine-grained quartzite, black pyrite argillite, dense light green to grey calc-silicate hornblende and fine-grained marble; minor slate, silty limestone and greywacke; 14a, light grey thin-bedded fine-grained marble and calc-silicate hornblende. (Map sheets 1 and 2)
SILURIAN AND DEVONIAN (?)	12 Fine-grained light to dark grey dolomite and quartzite; minor buff-grey dolomitic quartzite and silty to sandy dolomite
CAMBRIAN AND/OR EARLIER	10 Dark grey and brown silty shale and shaly limestone siltstone, dark grey slate, thin-bedded brown-grey fine-grained sandstone; minor hornblende
PROTEROZOIC	2 Quartz-feldspar-mica gneiss and schist, granodiorite, felsic gneiss and muscovite quartzite, biotite schist, minor marble and shales; numerous small granite bodies, white and pegmatite; 2c, fine- to coarse-grained marble

Kilometres 6 0 6
 Frances Lake
FIGURE 6-1

PULSE RESOURCES LTD.
BARB PROJECT - FRANCES LAKE AREA
WATSON LAKE M.D., Y.T. — NTS 105H/6

REGIONAL GEOLOGY MAP

AUGUST 1987



6.0 GEOLOGY

6.10 Previous Geological Work

Systematic mapping on the property was carried out by Sovereign Metals Corporation on a limited area around the showings during the 1979 field season(12). Cominco Limited carried out 1:10,000 scale mapping during the 1980 field season(14) and 1:5000 scale mapping during the 1981 season(15). Much of the geological information gained on this property has been gathered from the some 3900 meters of drilling carried out between 1966 and 1980 and from trenching carried out in 1979. The majority of the outcrop on the property is found along the lakeshore or along the banks of Thompson Creek.

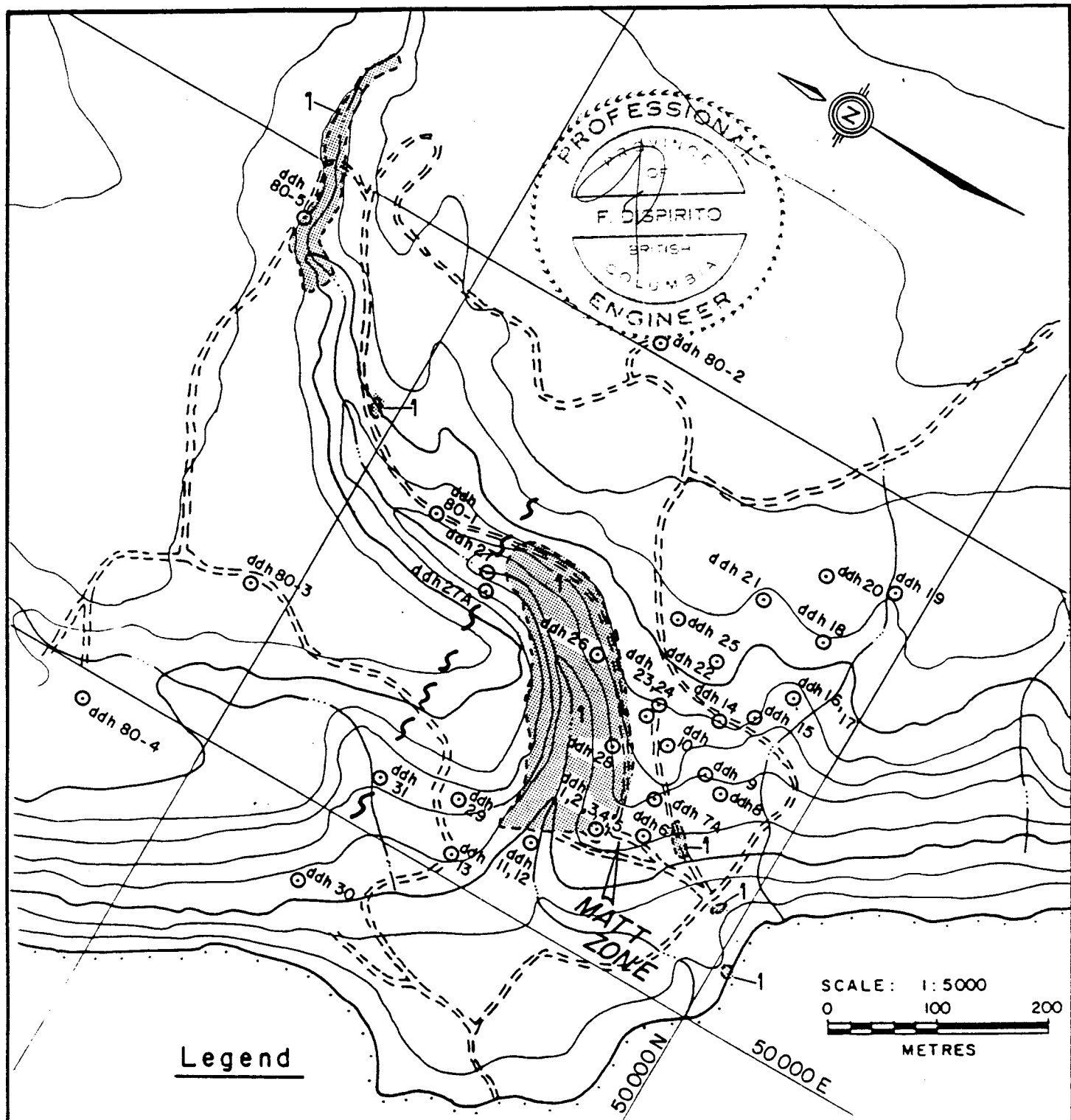
6.20 Regional Geology

The regional geology of the area around the property has been mapped by the Geological Survey of Canada at a scale of 1" = 4 miles. The property area is largely covered with glacial and alluvial material apparently underlain by Devonian and (?) Mississippian metasediments and minor volcanics(Figure 6-1). This unit, shown as Unit 14(Figure 6-1) is in contact with the Cretaceous Mt. Billings Batholith, shown as Unit 15(Figure 6-1) to the southeast of the property.

6.30 Local Geology

6.310 Rock Types

The survey area is underlain largely by phyllites which were originally clastic marine sediments of mudstone to sandstone composition(Figure 6-2). Generally these phyllites are medium grey to dark grey-black in colour and are strongly foliated. Weak quartz veining parallels



Legend

- ~ ~ ~ Vertical Fault
- - - Limit of Geologic Outcrop
- ⊙ Drill Hole
- - - - - Cat Roads
- 1 [shaded box] Phyllite - strongly foliated, dark grey to black.

FIGURE 6-3

PULSE RESOURCES LTD.	
BARB PROJECT — FRANCES LAKE AREA WATSON LAKE M.D., Y.T. — NTS 105H/6	
DRILL HOLE LOCATIONS & GEOLOGY	
To accompany a report by : D.F. SYMONDS, B.Sc. & F. DI SPIRITO B.Sc., P.Eng.	
Drawn by : DS/GT	Date : Aug. 1987



and cross-cuts foliation. Discontinuous quartz boudins are developed in areas of local folding.

A limited number of small outcrops of a quartz augen schist were mapped within the phyllite. This schist is light grey-green, strongly foliated and contains 20% to 40% quartz eyes which range up to 8 mm. in size.

The majority of the float which was observed in the survey area was quartz monzonite from the mountain slopes to the northeast.

A quartz sericite schist unit was mapped in one isolated location on the lakeshore south of the mineralized showing by Cominco. High water levels on the lake prevented examination of this outcrop. This schist has been described as a white, rusty- weathering unit consisting of 85% to 95% quartz with sericite.

6.320 Structure

The property is located on the gently-dipping western limb of a north-northwest trending syncline which exhibits extensive deformation locally within the units.

Ostler(12) attributes this to three stages of deformation:

- I Formation of large near-isoclinal folds with north-northwest trending fold axis.
- II Intrusion of granitic plutons to the east, resulting in moderate southwest-dipping cleavage and minor kink folds.

III Deformation resulting in broad upright warps and minor kink folds with near-vertical axial planes trending north- northeast.

Locally, numerous faults transect the property. These faults are most commonly near-vertical east-west trending. In DDH 31 a vertical fault was intersected 50 feet above the anticipated intersection with the "Matt Zone". This fault may be responsible for displacing the mineralized "Matt Zone" on the northwest side of the zone.

Intense local folding with the development of discontinuous quartz boudin structures can be observed at numerous locations along the lakeshore and up the Thompson Creek "valley".

6.330 Mineralization

The only significant mineralization found on the property to date is the "Matt Zone", which has been delineated to a large extent by drilling. (Figure 6-3). Mineralization in the "Matt Zone" includes argentiferous galena, sphalerite, pyrite, pyrrhotite, boulangerite and manganese siderite. This mineralized horizon is approximately 12 meters in thickness. Within this horizon, interlamination of sulphide mineralization from a few mm. to 50 cm. in thickness occur. These interlamination "beds" are locally deformed and pinch and swell along strike.

Copper mineralization has been reported as traces of chalcopyrite in quartz veins cutting the phyllite unit. The quartz augen schist reportedly contains traces of galena and sphalerite along foliation planes.

Mineralized float in the survey area appears to be mainly quartz boudin material containing some galena and sphalerite. These boudin structures are discontinuous when found in place, usually in areas of intense local folding.

6.340 Ore Reserves

An ore reserve calculation, based upon all available drilling information was made by C.K. Ikona for Sovereign Metals Corporation in 1977(11). The following is a summary of tonnage and grade estimates:

	Tons	Ag(oz./ton)	Pb(%)	Zn(%)
BLOCK I (Drill Indicated)	193,000	4.7	8.9	8.0
BLOCK II (Inferred)	138,000	2.0	4.3	3.2
BLOCK III (Inferred)	257,000	2.3	5.0	2.9
TOTAL	588,000	3.0	6.1	4.6

(All Classifications)

Additional drilling and possible underground work would be required to establish "proven" ore reserves.

7.0 GEOPHYSICS

7.10 Previous Geophysical Work

During the period of 1966 to 1970, a VLF electromagnetic survey and a turam electromagnetic survey were carried out on the property with indeterminate results. A magnetic survey carried out in the area surrounding the Matt Berry zone delineated a subtle (+200 nT) anomaly apparently coincident with the topographic trace of the mineralized zone.

A gravity survey conducted during the 1975 field season proved to be of limited value as no terrain corrections were made to the data.

During the 1979 field season, a pulse electromagnetic survey was carried out on a portion of the property with indeterminate results.

No further geophysical work was reported on the property until the present time.

7.20 Magnetic Survey

7.210 Survey Method

A magnetic survey covering some 43 kilometers of grid line was carried out on the property. Specifications for the survey are given in Appendix II. Readings were taken on lines spaced nominally 100 meters apart with stations at 25 meters. A base value of 50,000 nT was subtracted from each corrected magnetic reading for purposes of plotting the data. The main magnetic survey data is shown in Figure 7-1 and is contoured as Figure 7-1A, the most significant magnetic anomaly, (MAGI) was covered with a detailed survey with 50 meter line spacing and 12.5 meter station spacing. This detail survey data and contours are presented as Figure 7-2.

7.220 Discussion of Results

Total field corrected magnetic readings over the property ranged from 58020.6 nT to 59061.5 nT. A contour map (Figure 7-1) was prepared from the data, using 100 nT contour intervals. The general magnetic trend is at approximately 130 degrees, which is sub-parallel with the observed stratigraphy. Within the survey area, four areas exhibiting magnetic highs (values greater than 58700 nT) are present. These areas are referred to as MAG I through MAG IV on Figure 7-1. The most significant of these anomalous areas was investigated with a detailed survey (Figure 7-2). A discussion of the anomalous magnetic areas follows:

MAG I: (Figures 7-1, 7-1A, 7-2)

This anomalous area covers a trend length of approximately 350 meters at a bearing of approximately 130 degrees. Magnetic field values up to 59061.5 nT are present. There is no outcrop in the immediate area. There are minor copper and silver geochemical anomalies immediately downslope, with more significant copper and zinc anomalies further downslope, towards Frances Lake.

MAG II: (Figures 7-1, 7-1A)

This anomalous area covers a trend length of approximately 300 meters at a bearing of approximately 150 degrees. Magnetic field values up to 58758.4 nT are present. There is no outcrop in the immediate area. No recent geochemical sampling has been carried out in this area.

MAG III: (Figures 7-1, 7-1A)

This anomalous area covers approximately 200 meters X 350 meters and is open to the north with no definite strike direction. Magnetic field values up to 58805.0 nT are present. The area is swampy and covered with deep overburden, masking geochemical response.

MAG IV: (Figures 7-1, 7-1A)

This anomalous area covers approximately 200 meters X 350 meters and is open to the south and bounded by Frances Lake to the west. Magnetic field values up to 58973.3 nT are present. No recent geochemical sampling has been carried out in this area.

8.0 GEOCHEMISTRY

8.10 Previous Geochemical Work

Before Cominco Limited carried out a systematic geochemical soil survey in 1981(15) the only geochemical surveys completed on the property were confined to the immediate area of the mineralized showing. During the 1981 field season, Cominco took a total of 1179 soil/16 stream sediment/34 rock samples on a survey grid over the area to the southeast of the mineralized showing. Samples were analysed in the company laboratory for lead, zinc, silver and copper. A major copper anomaly was interpreted as being caused by chalcopyrite present in quartz veins cutting the various rock units on the property. Several small lead & zinc anomalies are interpreted as being caused by traces of galena and sphalerite found along the foliation planes of the quartz augen schist unit. There were no significant silver anomalies.

8.20 Geochemical Survey

8.210 Survey Method

A survey grid was established for sampling, with lines running at a bearing of 060 degrees(true). This line bearing was used in an attempt to cut the known lithology/mineralized horizon at right angles as closely as possible. Lines were spaced at 100 meter intervals with sample stations on the lines at 25 meter intervals. The geochemical grid covers the known mineralized area and extends right down to the lakeshore, a critical area for exploration, as well as a larger area to the southeast, east and northwest. Samples were taken as described in Appendix III. Great care was taken to sample below the (sometimes double) ash layer present near the "B" horizon at most sample sites.

A total of 720 soil samples were taken and analysed for copper, lead, zinc, silver and arsenic. Results are shown in Figures 8-1 through 8-5.

8.220 Discussion of Results

Statistical analysis was performed on the geochemical samples with the following results:

Elem.	Unit	n	Mean	Median	Stand Dev.	Low	High	Coeff.of Var.
CU	ppm	720	17.2	11.0	18.6	1.0	262.0	1.08
PB	ppm	720	13.2	11.0	18.9	2.0	435.0	1.44
ZN	ppm	720	79.3	70.0	46.7	6.0	576.0	0.59
AG	ppm	720	0.26	0.20	0.19	0.10	1.90	0.74
AS	ppm	720	17.2	11.0	24.7	2.0	279.0	1.44

The coefficient of variation is calculated by dividing the standard deviation by the mean. A higher value of this coefficient indicates a higher probability of anomalous sample values for the element concerned. The following table illustrates anomalous thresholds for the various elements:

Element	Anomalous(ppm)	Highly Anomalous Threshold(ppm)
CU	35.0	55.0
PB	30.0	45.0
ZN	130.0	180.0
AG	0.5	0.7
AS	40.0	65.0

These thresholds are based on the mean value plus 1 standard deviation and the mean value plus 2 standard deviations.

A discussion of four geochemical copper anomalies(CU1 to CU4), two geochemical lead anomalies(PB1 & PB2), four geochemical zinc anomalies(ZN1 to ZN4), two geochemical silver anomalies(AG1 & AG2) and four geochemical arsenic anomalies(AS1 to AS4) follows:

CU1: (Figures 8-4)

This copper anomaly consists of 2 samples, the highest value being 119.0 ppm. The anomaly is close the the Matt Berry mineralized zone and reflects this fact.

CU2: (Figures 8-4)

This copper anomaly consists of 12 samples, the highest value being 128.0 ppm. The area is underlain by phyllitic rocks.

CU3: (Figures 8-4)

This copper anomaly consists of 9 samples, the highest value being 262.0 ppm. The anomaly is open to the south. There is no outcrop in the area.

CU4: (Figures 8-4)

This copper anomaly consists of 5 samples, the highest value being 93.0 ppm. The anomaly is open to the south. There is no outcrop in the area.

PB1: (Figures 8-2)

This lead anomaly consists of 3 samples, the highest value being 2425.0 ppm. The high values are a reflection of the Matt Berry mineralized zone which lies nearby.

PB2: (Figures 8-2)

This lead anomaly consists of 8 samples, the highest value being 201.0 ppm. There is no outcrop in the area.

ZN1: (Figures 8-3)

This zinc anomaly consists of 10 samples, the highest value being 2693.0 ppm. The high values are a reflection of the Matt Berry mineralized zone which lies nearby.

ZN2: (Figures 8-3)

This zinc anomaly consists of 9 samples, the highest value being 120.0 ppm. There is no outcrop in the area.

ZN3: (Figures 8-3)

This zinc anomaly consists of 25 samples, the highest value being 576.0 ppm. The anomaly is open to the south. There is no outcrop in the area.

ZN4: (Figures 8-3)

This zinc anomaly consists of 4 samples, the highest value being 235.0 ppm. The area is on the shore of Frances Lake and is underlain by phyllitic rocks.

AG1: (Figures 8-1)

This silver anomaly consists of 2 samples, the highest value being 6.3 ppm. The high values reflect the Matt Berry mineralized zone which lies nearby.

AG2: (Figures 8-1)

This silver anomaly consists of 23 samples, the highest value being 0.9 ppm. There is no outcrop in the area.

AS1: (Figures 8-5)

This arsenic anomaly consists of 2 samples, the highest value being 145.0 ppm. The high values reflect the Matt Berry mineralized zone which lies nearby.

AS2: (Figures 8-5)

This arsenic anomaly consists of 15 samples, the highest value being 116.0 ppm. The anomaly is open to the east. There is no outcrop in the area.

AS3: (Figures 8-5)

This arsenic anomaly consists of 8 samples, the highest value being 279.0 ppm. The anomaly is open to the northeast. There is no outcrop in the area.

AS4: (Figures 8-5)

This arsenic anomaly consists of 24 samples, the highest value being 231.0 ppm. The anomaly is open to the south. There is no outcrop in the area.

9.0 GENERAL DISCUSSION OF RESULTS

There is a relative scarcity of outcrop in the survey area (5%). The known mineralized zone("Matt Zone") exhibits a clear geochemical signature, with anomalous values in copper, lead, zinc, silver and arsenic. This zone also shows a subtle increase in total magnetic field when crossed.

The most significant magnetic anomaly (MAG I) has some associated adjacent downslope geochemical anomalies in silver and copper, with more significant copper (CU2) and zinc anomalies further downslope towards the shore of Frances Lake.

The most significant geochemical anomaly, which covers an area previously sampled by Cominco contains anomalous values in copper (CU3), lead (PB2), zinc (ZN3) and arsenic (AS3 & AS4).

Other significant magnetic anomalies (MAG II, MAG III, MAG IV) are in areas of heavy overburden or have not had systematic, properly orientated geochemical surveys conducted on them.

10.0 CONCLUSIONS & RECOMMENDATIONS

The geologic environment underlying the Barb/Beth group of mineral claims is conducive to hosting lead-zinc-silver mineralization. Drilling to-date has focussed on delineation of the Matt Zone. The possibility of similar mineralized zones exist within the claim group.

The July, 1987 field program delineated magnetic and geochemical anomalies which require further investigation. A two phase exploration program is recommended.

It is recommended that an induced polarization orientation survey be carried out over the Matt Berry mineralized zone. If this zone gives a good response to the I.P. technique, further I.P. surveying is recommended over the major magnetic and geochemical anomalies. Any anomalous areas delineated by a successful I.P. survey should be trenched with a bulldozer. A portable hammer seismograph survey is recommended as a preliminary step before trenching, in order to optimize usage of the bulldozer.

Contingent upon the results of the I.P. survey program, a drilling program to test anomalous areas is recommended.

11.0 ESTIMATED COST OF PROPOSED EXPLORATION PROGRAM

PHASE I:

Induced Polarization Survey, allow	\$16,000.00
Hammer Seismograph Survey, allow	6,000.00
Bulldozer Trenching, allow	26,000.00
Geologic Support, allow	9,000.00
Assays, allow	3,000.00
Transportation, Shipping, Camp Costs, allow	11,000.00
Engineering, Supervision, Report, allow	7,000.00
Contingencies at approximately 15%	<u>12,000.00</u>
Estimated Total Cost of PHASE I:	\$90,000.00

Contingent upon obtaining favourable results from the Phase I program, a second phase of exploration consisting of diamond drill testing is recommended. A sum of \$150,000.00 should be allocated to complete Phase II.

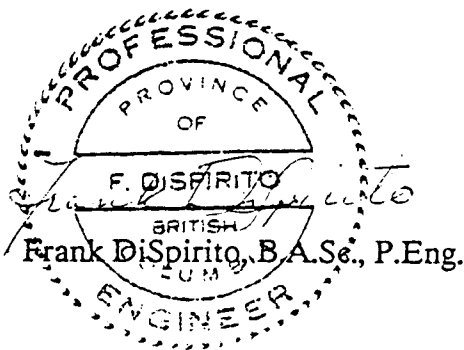
PHASE II:

Diamond Drilling, say 900m @ \$100/metre	\$90,000.00
Geological Support, allow	8,000.00
Camp Cost, Mobilization/Demob., allow	12,000.00
Bulldozer, road and drill sites, allow	14,000.00
Engineering, Supervision and Reports, allow	6,000.00
Contingencies @ approx. 15%	<u>20,000.00</u>
Estimated Total Cost of PHASE II	\$150,000.00

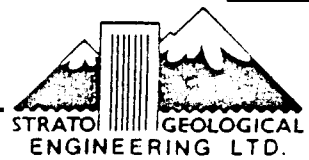
Respectfully submitted,
Strato Geological Engineering Ltd.

D. Symonds
Douglas F. Symonds, B.Sc.

August 10, 1987



APPENDIX I
CERTIFICATES

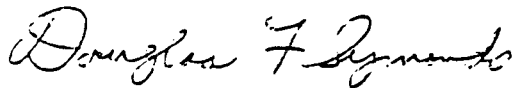


APPENDIX I - CERTIFICATES

I, Douglas Frederick Symonds, of 440 West 18th Avenue, Vancouver, British Columbia do hereby certify that:

1. I am a geologist and a graduate of the University of British Columbia, B.Sc.(Geol.), 1972.
2. I have practiced my profession from 1972 to the present time.
3. This report is based upon field work carried out under my direct supervision during July, 1987 and upon a study of all available material pertaining to the Barb property.
4. I have no interest, either direct or indirect in the Barb property or in Pulse Resources Ltd., nor do I expect to receive any such interest

Signed at Vancouver, British Columbia this 10th day of August, 1987:

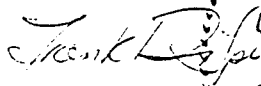


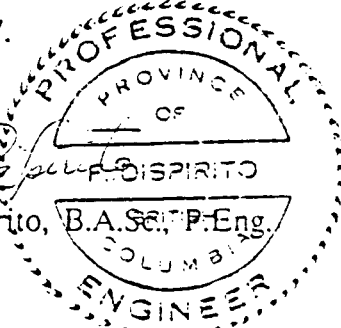
D.F. Symonds, B.Sc.(Geol.)

I, Frank DiSpirito, of 1319 Shorepine Walk of the City of Vancouver, Province of British Columbia, do hereby certify as follows:

1. I graduated in 1974 from the University of British Columbia with a Bachelor of Applied Science in Geological Engineering.
2. Since graduation I have been involved in numerous mineral and hydrocarbon exploration programs throughout Canada and the United States.
3. I am a registered member, in good standing, of the Association of Professional Engineers of British Columbia.
4. This report is based on personal field examinations made of the mineral property during July 1987, and on evaluation of privately and publically-held data pertaining to said property.
5. I have not received, nor do I expect to receive, any interest, direct, indirect, or contingent, in the securities or properties of Pulse Resources Ltd., and that I am not an insider of any company having an interest in the Barb/Beth mineral claims or any other properties in the area.
6. Permission is herewith granted for use of this report for the purpose of a Prospectus or Statement of Material Facts.

Dated at Vancouver, Province of British Columbia, this 10th day of August, 1987.


Frank DiSpirito, B.A.Sc., P.Eng.
COLUMBIA



The seal is circular with a dotted border. The outer ring contains the text 'PROFESSIONAL ENGINEER'. The inner ring contains 'PROVINCE OF BRITISH COLUMBIA'. In the center, the name 'FRANK DI SPIRITO' is written in a stylized font, with 'B.A.Sc., P.Eng.' written below it.



APPENDIX II
SURVEY SPECIFICATIONS & RESULTS
(MAGNETIC SURVEY)

APPENDIX II - MAGNETOMETRY SPECIFICATIONS

1) Field Magnetometer

The field magnetometer used on this project was a Scintrex Model MP-3 proton precession magnetometer. The unit was used with rechargeable batteries and with the sensor mounted on the operator's back using a small pack-frame. Readings of the total magnetic field were taken at nominal 25 meter intervals with the operator facing the same direction (60 degrees) for each reading.

Specifications for the MP-3 magnetometer are as follows:

TOTAL FIELD OPERATING RANGE:	20,000 TO 100,000 nT
GRADIENT TOLERANCE:	+/- 5000 nT/m
ABSOLUTE ACCURACY:	+/- 2 nT over total range
RESOLUTION:	0.1 nT
TUNING:	fully solid-state
READING TIME:	2 seconds
OPERATING TEMPERATURE RANGE:	-40 TO +50C (with heater)
SURVEY SENSITIVITY:	+/- 20 nT over total range

2) Base Station

A Scintrex Model IGS-2 Integrated Geophysical System console was used as a base station. This console, when used as a magnetic base station has the same specifications as the Scintrex Model MP-3 magnetometer. The base station sensor was positioned approximately 40 meters from any local magnetic influence. A 12- volt car battery was used to power the base station, which was operated using a sampling rate of 30 seconds (10 second sampling rate for the detail survey). The

latest version of Scintrex software (V 1.6) was used to make diurnal corrections to the field data. A Kaypro II microcomputer using Modem76 software was used to record the corrected data on floppy disk for further use in plotting magnetic plans.

APPENDIX III
SURVEY SPECIFICATIONS & RESULTS
(GEOCHEMICAL SURVEY)

APPENDIX III - GEOCHEMICAL SURVEY SPECIFICATIONS

In order to determine the optimum soil horizon for sampling, a number of soil profiles were dug and examined on the property. Since the rusty "B" horizon was reasonably well-developed over the survey area, it was chosen for sampling. Where this horizon was not present, the lower "C" horizon was sampled. Swamp areas were not sampled. A single and sometimes double ash layer was present in the soil and all samples were taken below this layer.

Samples were dug using a grub hoe or shovel and placed in kraft paper soil bags. These bags were numbered with the grid coordinates and any notes pertinent to the sample site were written on the bags. The bags were then boxed and sent to Acme Analytical Laboratories Ltd. of Vancouver, B.C. for analysis.

Samples were analysed for five elements (Ag/Pb/Zn/Cu/As) using the I.C.P. (Inductively Coupled Argon Plasma) technique. A 0.500 gram sample of sieved -80 mesh soil material was digested with 3.0 milliliters of 3-1-2 HCl-HNO₃-H₂O at 95 degrees Celsius for one hour and then diluted with water to a volume of 10 milliliters. Anomalous thresholds determined by statistical analysis on the 720 samples taken were plotted as contours on geochemical plans of the various elements.

GEOCHEMICAL ICP ANALYSIS

.500 GRAM SAMPLE IS DIGESTED WITH 3ML 3-1-2 HCL-HNO3-H2O AT 95 DEG.C FOR ONE HOUR AND IS DILUTED TO 10 ML WITH WATER.
 THIS LEACH IS PARTIAL FOR MN FE CA P LA CR MG BA TI B W AND LIMITED FOR NA AND K. AU DETECTION LIMIT BY ICP IS 3 PPM.
 - SAMPLE TYPE: SOILS -80 MESH

ASSAYER: *D. Toye* DEAN TOYE, CERTIFIED B.C. ASSAYER

STRATO GEOLOGICAL PROJECT-BARB File # 87-2691 Page 1

SAMPLE#	CU PPM	PB PPM	ZN PPM	AG PPM	AS PPM
10500N 9250E	12	15	66	.1	8
10500N 9275E	15	15	84	.3	6
10500N 9300E	10	13	88	.2	6
10500N 9325E	13	15	69	.3	6
10500N 9350E	16	16	68	.3	6
10500N 9375E	13	18	87	.2	10
10500N 9400E	1	2	30	.1	3
10500N 9425E	10	22	114	.4	10
10500N 9450E	16	22	99	.3	9
10500N 9475E	6	11	55	.1	5
10500N 9500E	7	14	52	.1	8
10500N 9525E	13	7	74	.5	21
10500N 9550E	9	14	81	.3	11
10500N 9575E	4	8	62	.1	6
10500N 9600E	9	13	47	.3	8
10500N 9625E	4	4	52	.1	6
10500N 9650E	3	11	35	.1	4
10500N 9675E	6	12	43	.3	5
10500N 9700E	4	9	33	.1	3
10500N 9725E	5	12	34	.1	10
10500N 9750E	5	11	52	.1	13
10500N 9775E	4	7	44	.1	6
10500N 9800E	4	5	46	.1	6
10500N 9825E	6	13	48	.1	4
10500N 9850E	8	14	40	.2	8
10500N 9875E	6	16	30	.2	4
10500N 9900E	6	12	27	.1	6
STD C	60	40	128	7.4	19
10500N 9925E	5	7	33	.1	4
10500N 9950E	29	33	96	1.3	19
10400N 9250E	24	23	140	.6	15
10400N 9275E	17	18	114	.3	13
10400N 9300E	14	16	104	.2	9
10400N 9325E	10	9	111	.1	10
10400N 9350E	4	6	112	.1	5
10400N 9375E	6	9	131	.2	10
10400N 9400E	6	12	121	.4	9

SAMPLE#	CU PPM	PB PPM	ZN PPM	AG PPM	AS PPM
10400N 9425E	7	8	150	.2	6
10400N 9450E	12	12	78	.2	8
10400N 9475E	8	9	38	.3	5
10400N 9500E	5	6	45	.2	2
10400N 9525E	4	7	63	.1	11
10400N 9550E	3	10	66	.1	3
10400N 9575E	6	10	67	.1	5
10400N 9600E	2	5	42	.3	5
10400N 9625E	10	10	52	.1	3
10400N 9650E	8	17	64	.1	10
10400N 9675E	5	11	71	.3	12
10400N 9700E	2	2	41	.2	4
10400N 9725E	7	5	65	.1	4
10400N 9750E	8	10	80	.3	2
10400N 9775E	6	10	50	.3	9
10400N 9800E	5	6	44	.1	8
10400N 9825E	2	7	22	.1	2
10400N 9850E	7	8	49	.1	7
10400N 9875E	5	6	31	.1	3
10400N 9900E	8	10	60	.1	8
10400N 9925E	3	4	21	.1	5
10400N 9950E	3	2	16	.1	2
10400N 9975E	1	3	6	.1	2
10300N 9250E	35	18	161	.4	10
10300N 9275E	24	14	179	.5	14
10300N 9300E	30	18	150	.4	17
10300N 9325E	22	16	122	.3	12
10300N 9350E	4	8	76	.2	2
10300N 9375E	18	21	146	.7	15
10300N 9400E	3	11	71	.1	7
10300N 9425E	7	13	57	.1	2
10300N 9450E	10	10	65	.1	2
10300N 9475E	9	8	72	.3	5
10300N 9500E	7	7	40	.3	5
10300N 9525E	21	15	74	.6	11
10300N 9550E	3	7	87	.1	7
STD C	63	43	138	7.4	42

SAMPLE#	CU PPM	PB PPM	ZN PPM	AG PPM	AS PPM
10300N 9575E	6	16	146	.1	7
10300N 9600E	7	14	229	.3	12
10300N 9625E	6	15	101	.1	16
10300N 9650E	10	12	112	.1	8
10300N 9675E	5	13	78	.1	13
10300N 9700E	7	13	54	.1	14
10300N 9725E	11	13	53	.1	19
10300N 9750E	4	3	44	.1	3
10300N 9775E	6	13	51	.3	6
10300N 9800E	11	11	69	.3	11
10300N 9825E	12	14	81	.1	16
10300N 9850E	10	9	32	.3	9
10300N 9875E	17	12	54	.4	19
10300N 9900E	4	5	30	.1	5
10300N 9925E	14	15	54	.1	11
10300N 9950E	15	18	49	.2	12
10300N 9975E	27	15	55	.2	6
10300N 10000E	26	21	53	.2	18
10200N 9175E	10	17	65	.3	18
10200N 9200E	11	17	70	.3	9
10200N 9225E	21	25	127	1.9	12
10200N 9250E	27	26	129	.1	17
10200N 9275E	6	11	85	.1	4
10200N 9300E	17	13	65	.1	7
10200N 9325E	4	9	51	.1	2
10200N 9350E	6	8	72	.1	2
10200N 9375E	4	6	73	.1	6
10200N 9400E	8	21	67	.2	13
10200N 9425E	6	20	114	.2	8
10200N 9450E	8	15	103	.1	4
10200N 9475E	6	12	47	.1	5
10200N 9500E	2	8	41	.1	2
10200N 9525E	4	6	60	.1	2
10200N 9550E	3	10	42	.1	6
10200N 9575E	7	10	49	.1	5
10200N 9600E	10	13	51	.4	4
STD C	57	43	132	7.2	41

SAMPLE#	CU PPM	PB PPM	ZN PPM	AG PPM	AS PPM
10200N 9625E	14	12	53	.1	8
10200N 9650E	24	11	55	.3	13
10200N 9700E	21	7	64	.3	16
10200N 9725E	40	19	93	.3	22
10200N 9750E	17	10	59	.2	13
10200N 9775E	10	8	44	.1	13
10200N 9800E	14	8	42	.2	15
10200N 9825E	7	7	41	.1	16
10200N 9850E	8	8	28	.2	7
10200N 9875E	9	10	45	.2	13
10200N 9900E	5	12	37	.1	11
10200N 9925E	13	5	43	.3	13
10200N 9950E	9	7	41	.4	9
10200N 9975E	15	13	77	.4	12
10200N 10000E	10	19	89	.3	19
10100N 9100E	28	19	60	.2	20
10100N 9125E	11	7	55	.2	19
10100N 9150E	20	19	98	.3	21
10100N 9175E	13	20	60	.4	22
10100N 9200E	22	19	85	.3	28
10100N 9225E	25	16	88	.2	24
10100N 9250E	22	24	83	.4	25
10100N 9275E	46	435	185	1.1	18
10100N 9300E	36	17	94	.4	22
10100N 9325E	15	16	135	.3	21
10100N 9350E	25	20	111	.2	22
10100N 9375E	13	12	75	.4	7
10100N 9400E	6	11	65	.3	8
10100N 9425E	7	4	75	.2	13
10100N 9450E	7	8	84	.3	15
10100N 9475E	22	14	84	.2	10
10100N 9500E	11	6	51	.2	7
10100N 9550E	20	6	59	.1	16
STD C	59	39	136	7.6	38
10100N 9575E	21	16	81	.4	18
10100N 9600E	11	8	69	.3	9

SAMPLE#	CU PPM	PB PPM	ZN PPM	AG PPM	AS PPM
10100N 9625E	44	34	125	.3	37
10100N 9650E	26	17	76	.1	13
10100N 9675E	10	13	56	.1	5
10100N 9700E	16	12	76	.2	7
10100N 9725E	9	11	58	.1	10
10100N 9750E	9	17	50	.1	12
10100N 9775E	8	18	68	.1	8
10100N 9800E	7	12	54	.1	8
10100N 9825E	15	16	63	.1	13
10100N 9850E	9	15	40	.1	11
10100N 9925E	73	12	97	.4	26
10100N 9950E	34	17	111	.3	26
10100N 9975E	37	14	108	.3	28
10100N 10000E	55	16	101	.3	14
10000N 9225E	37	32	119	.3	21
10000N 9250E	36	18	120	.2	42
10000N 9275E	44	31	104	.2	27
10000N 9300E	33	29	113	.2	24
10000N 9325E	16	23	161	.4	14
10000N 9350E	8	16	157	.1	13
10000N 9375E	10	15	156	.2	14
10000N 9400E	17	24	155	.5	16
10000N 9425E	7	15	101	.1	8
10000N 9450E	23	20	136	.2	23
10000N 9475E	21	12	78	.2	16
10000N 9500E	20	18	140	.4	14
10000N 9525E	17	14	92	.1	11
10000N 9550E	13	15	114	.1	13
10000N 9575E	14	26	155	.4	15
10000N 9600E	2	8	42	.1	4
10000N 9625E	4	10	58	.2	9
10000N 9650E	3	9	39	.1	3
10000N 9675E	8	14	89	.2	12
10000N 9700E	9	11	51	.2	13
STD C	62	40	132	7.4	41

SAMPLE#	CU PPM	PB PPM	ZN PPM	AG PPM	AS PPM
10000N 9725E	8	6	65	.2	10
10000N 9750E	7	11	42	.2	5
10000N 9775E	8	12	51	.1	10
10000N 9800E	5	3	43	.2	9
10000N 10000E	38	16	112	.6	44
9900N 9325E	18	14	114	.3	6
9900N 9350E	13	9	85	.3	10
9900N 9375E	9	6	55	.2	9
9900N 9400E	17	22	92	.3	16
9900N 9425E	10	6	67	.4	10
9900N 9450E	17	15	84	.4	16
9900N 9475E	20	13	92	.2	17
9900N 9500E	13	10	68	.2	8
9900N 9525E	5	22	75	.2	8
9900N 9550E	7	6	47	.2	6
9900N 9575E	4	13	62	.3	6
9900N 9600E	9	12	78	.4	11
9900N 9625E	5	7	55	.2	12
9900N 9650E	7	13	96	.4	9
9900N 9675E	11	12	69	.2	11
9900N 9700E	5	10	65	.2	10
9900N 9725E	5	10	58	.1	9
9900N 9750E	4	16	75	.4	11
9900N 9775E	7	14	61	.2	13
9900N 9800E	4	9	53	.2	12
9900N 9825E	1	2	11	.1	5
9900N 9950E	59	13	41	.5	3
9900N 10000E	2	2	12	.1	3
9800N 9325E	27	26	150	.3	19
9800N 9350E	35	37	168	.3	25
9800N 9375E	15	15	83	.2	19
9800N 9400E	8	15	115	.3	19
9800N 9425E	11	11	142	.3	15
9800N 9450E	9	19	119	.4	24
9800N 9475E	5	12	85	.4	7
9800N 9500E	4	7	74	.1	11
STD C	62	39	131	7.5	38

SAMPLE#	CU PPM	PB PPM	ZN PPM	AG PPM	AS PPM
9800N 9525E	8	16	69	.1	5
9800N 9550E	7	15	57	.2	9
9800N 9575E	7	9	54	.1	6
9800N 9600E	10	11	68	.1	2
9800N 9625E	6	8	86	.1	7
9800N 9650E	7	8	59	.1	2
9800N 9675E	6	10	86	.1	8
9800N 9700E	7	9	40	.1	5
9800N 9725E	6	7	56	.2	3
9800N 9750E	4	9	70	.1	12
9800N 9775E	10	15	55	.3	3
9800N 9800E	7	14	70	.1	13
9800N 9825E	7	9	45	.1	5
9800N 9850E	18	10	35	.1	5
9800N 9875E	16	4	81	.7	2
9800N 9900E	18	4	42	.3	2
9800N 9950E	77	10	50	.1	10
9800N 9975E	34	4	38	.1	2
9800N 10000E	19	6	47	.1	9
9700N 9325E	4	5	40	.2	4
9700N 9350E	5	5	48	.2	2
9700N 9375E	9	8	73	.2	2
9700N 9400E	8	9	57	.2	4
9700N 9425E	8	6	53	.2	6
9700N 9450E	7	9	77	.2	2
9700N 9475E	6	6	54	.1	3
9700N 9500E	10	9	74	.4	5
9700N 9525E	6	10	72	.3	8
9700N 9550E	8	9	64	.2	8
9700N 9575E	8	10	82	.1	4
9700N 9600E	5	8	48	.2	2
9700N 9625E	3	7	27	.1	2
9700N 9650E	6	9	42	.4	4
9700N 9675E	5	9	63	.1	12
9700N 9700E	3	7	64	.2	2
9700N 9725E	4	7	66	.2	5
STD C	60	40	134	7.4	44

SAMPLE#	CU PPM	PB PPM	ZN PPM	AG PPM	AS PPM
9700N 9750E	10	9	49	.1	13
9700N 9775E	7	10	50	.2	11
9700N 9800E	5	7	51	.1	11
9700N 9825E	8	6	44	.1	7
9700N 9850E	7	10	48	.2	6
9700N 9875E	8	5	31	.2	5
9700N 9900E	58	16	57	.6	68
9700N 9925E	40	8	120	.6	19
9700N 10000E	30	3	113	.4	8
9600N 9300E	16	10	110	.3	7
9600N 9325E P	11	2	136	.1	3
9600N 9375E	32	15	91	.5	16
9600N 9400E	14	9	61	.3	13
9600N 9425E	25	15	93	.4	14
9600N 9450E	7	11	59	.1	9
9600N 9475E	12	13	94	.2	8
9600N 9500E	32	12	90	.6	11
9600N 9525E	8	8	57	.3	5
9600N 9550E	9	14	41	.2	8
9600N 9575E	3	8	42	.2	8
9600N 9600E	1	3	12	.1	2
9600N 9625E	9	6	57	.1	7
9600N 9650E	25	7	44	.2	3
9600N 9675E	22	10	57	.4	5
9600N 9700E	24	11	94	.5	13
9600N 9725E	7	8	38	.4	8
9600N 9750E	8	4	43	.1	4
9600N 9775E	4	7	40	.1	6
9600N 9800E	6	7	32	.1	7
9600N 9825E	5	10	36	.2	6
9600N 9850E	4	4	30	.1	2
9600N 9875E	18	6	70	.4	2
9600N 9900E	32	12	109	.4	16
9600N 9925E	32	15	95	.6	57
9600N 9950E	27	17	94	.4	29
9600N 9975E	31	10	88	.6	14
STD C	60	40	134	7.0	38

SAMPLE#	CU PPM	PB PPM	ZN PPM	AG PPM	AS PPM
9600N 10000E	30	8	76	.3	14
9500N 9300E	10	6	48	.2	5
9500N 9325E	13	8	62	.1	7
9500N 9350E	8	6	53	.1	2
9500N 9375E	35	22	117	.1	17
9500N 9400E	8	8	60	.1	2
9500N 9425E	6	3	53	.1	4
9500N 9450E	3	5	98	.1	6
9500N 9475E	3	14	66	.1	7
9500N 9500E	4	8	75	.1	10
9500N 9525E	6	8	76	.1	6
9500N 9550E	6	12	85	.1	11
9500N 9575E	6	9	71	.2	8
9500N 9600E	4	10	34	.1	4
9500N 9625E	13	11	86	.2	7
9500N 9650E	41	13	111	.6	14
9500N 9675E	23	4	41	.2	3
9500N 9700E	21	7	55	.2	9
9500N 9725E	25	19	131	.5	28
9500N 9750E	39	21	103	.5	15
9500N 9775E	26	15	97	.2	19
9500N 9800E	23	15	93	.4	20
9500N 9825E	19	14	86	.4	14
9500N 9850E	28	11	82	.2	13
9500N 9875E	29	14	88	.1	20
9500N 9900E	26	13	101	.2	19
9500N 9925E	16	11	69	.3	14
9500N 9950E	32	18	94	.5	16
9500N 9975E	66	26	143	.8	29
9500N 10000E	36	19	92	.3	18
9400N 9325E	5	10	48	.1	4
9400N 9350E	6	10	44	.1	5
9400N 9375E	15	10	103	.3	2
9400N 9400E	12	13	68	.1	4
9400N 9425E	10	13	59	.2	7
9400N 9450E	9	15	59	.1	9
STD C	60	41	135	7.7	42

SAMPLE#	CU PPM	PB PPM	ZN PPM	AG PPM	AS PPM
9400N 9475E	18	16	66	.4	7
9400N 9500E	16	12	59	.1	9
9400N 9525E	6	13	51	.1	10
9400N 9550E	6	12	54	.4	5
9400N 9575E	5	20	98	.2	12
9400N 9600E	5	16	55	.1	10
9400N 9625E	5	12	64	.2	17
9400N 9650E	7	7	64	.1	13
9400N 9675E	5	10	55	.4	11
9400N 9700E	5	4	45	.2	11
9400N 9725E	7	7	68	.1	14
9400N 9750E	13	16	103	.1	26
9400N 9775E	23	30	95	.5	31
9400N 9800E	29	11	65	.6	14
9400N 9825E	9	12	39	.2	11
9400N 9850E	31	13	67	.1	20
9400N 9875E	27	12	86	.4	18
9400N 9900E	16	11	53	.2	13
9400N 9925E	21	7	41	.3	11
9400N 9950E	22	14	67	.4	14
9400N 9975E	22	12	86	.2	16
9400N 10000E	34	20	114	.3	24
9300N 9350E	9	4	58	.1	9
9300N 9375E	25	13	90	.2	13
9300N 9400E	25	15	99	.2	11
9300N 9425E	31	11	115	.6	9
9300N 9450E	9	15	49	.1	8
9300N 9475E	7	8	44	.1	7
9300N 9500E	7	2	38	.3	7
9300N 9525E	5	3	54	.1	7
9300N 9550E	12	15	124	.2	8
9300N 9575E	9	18	66	.1	15
9300N 9600E	3	9	57	.1	8
9300N 9625E	5	10	74	.1	14
9300N 9650E	5	6	80	.1	5
9300N 9675E	5	7	47	.1	8
STD C	61	37	131	7.3	43

SAMPLE#	CU PPM	PB PPM	ZN PPM	AG PPM	AS PPM
9300N 9700E	8	12	66	.3	15
9300N 9725E	9	7	25	.3	2
9300N 9750E	27	16	109	.5	31
9300N 9775E	37	21	107	.5	54
9300N 9800E	16	16	106	.4	31
9300N 9825E	30	16	81	.5	40
9300N 9850E	19	13	76	.6	18
9300N 9875E	26	12	73	.5	24
STD C	60	38	138	7.4	40
9300N 9900E	32	15	72	.7	32
9300N 9925E	28	11	75	.3	16
9300N 9950E	20	13	70	.4	12
9300N 9975E	32	22	85	.6	14
9300N 10000E	22	17	88	.5	18
9200N 9375E	18	15	73	.4	11
9200N 9400E	18	12	91	.4	12
9200N 9425E	9	14	46	.3	6
9200N 9450E	5	6	62	.1	5
9200N 9475E	7	10	73	.1	5
9200N 9500E	5	11	62	.4	6
9200N 9525E	6	12	65	.4	6
9200N 9550E	7	7	87	.3	5
9200N 9575E	9	18	92	.2	11
9200N 9600E	8	15	39	.1	5
9200N 9625E	31	21	58	.3	7
9200N 9650E	29	6	129	.3	2
9200N 9675E	36	22	107	.7	25
9200N 9700E	44	19	67	.9	14
9200N 9725E	28	22	101	.2	40
9200N 9750E	26	21	100	.5	26
9200N 9775E	31	20	95	.5	42
9200N 9800E	23	21	98	.4	29
9200N 9825E	14	18	79	.3	35
9200N 9850E	20	15	92	.2	39
9200N 9875E	21	19	95	.3	35
9200N 9900E	28	21	124	.4	64
9200N 9925E	21	18	120	.5	47

SAMPLE#	CU PPM	PB PPM	ZN PPM	AG PPM	AS PPM
9200N 9950E	54	9	198	.5	33
9200N 9975E	28	13	141	.5	72
9200N 10000E	34	10	108	.4	34
9100N 9425E	25	12	117	.4	16
9100N 9450E	23	16	103	.5	11
9100N 9475E	16	14	65	.2	10
9100N 9500E	4	5	33	.1	6
STD C	60	40	129	7.7	41
9100N 9525E	4	11	84	.1	3
9100N 9550E	13	8	62	.3	8
9100N 9575E	15	12	56	.3	8
9100N 9600E	4	5	79	.1	9
9100N 9625E	11	7	44	.2	10
9100N 9650E	39	10	48	.6	3
9100N 9675E	26	4	35	.4	5
9100N 9700E	7	12	54	.1	8
9100N 9725E	2	5	15	.1	5
9100N 9750E	26	15	84	.2	45
9100N 9775E	20	13	108	.4	75
9100N 9800E	24	15	104	.5	73
9100N 9825E	25	17	103	.4	80
9100N 9850E	35	17	135	.6	104
9100N 9875E	38	18	164	.5	116
9100N 9900E	33	21	166	.4	95
9100N 9925E	43	25	166	.4	93
9100N 9950E	33	16	132	.3	70
9100N 9975E	40	17	162	.4	85
9100N 10000E	27	22	119	.3	53
9000N 9375E	20	16	95	.1	16
9000N 9400E	32	22	65	.1	20
9000N 9425E	56	33	146	.1	32
9000N 9450E	20	23	199	.1	17
9000N 9475E	23	13	82	.1	10
9000N 9500E	12	27	162	.3	11
9000N 9525E	12	2	149	.1	2
9000N 9550E	48	28	103	.1	19
9000N 9575E	69	25	66	.2	16

SAMPLE#	CU PPM	PB PPM	ZN PPM	AG PPM	AS PPM
9000N 9600E	46	2	101	.1	5
9000N 9625E	18	21	84	.1	16
9000N 9650E	7	12	56	.3	7
9000N 9675E	6	15	57	.1	2
9000N 9700E	6	6	27	.1	8
9000N 9725E	5	7	42	.1	14
9000N 9750E	4	9	49	.1	9
9000N 9775E	3	9	36	.1	4
9000N 9800E	20	5	37	.1	2
9000N 9825E	21	4	26	.1	6
9000N 9850E	22	5	87	.2	19
9000N 9875E	31	14	64	.4	30
9000N 9900E	21	5	171	.3	2
9000N 9925E	22	17	49	.3	10
9000N 9950E	15	21	81	.2	12
9000N 9975E	4	5	30	.1	5
9000N 10000E	11	13	108	.3	23
8900N 9300E	52	29	168	.2	29
8900N 9375E	33	14	112	.1	11
8900N 9400E	71	15	120	.7	16
8900N 9425E	46	3	120	.4	3
8900N 9450E	68	15	116	.3	19
8900N 9475E	109	22	105	.1	23
8900N 9500E	111	23	128	.4	17
8900N 9525E	76	17	59	.9	15
8900N 9550E	128	22	117	.4	21
8900N 9575E	11	19	124	.2	14
8900N 9600E	8	17	92	.2	11
8900N 9625E	12	16	95	.2	13
8900N 9650E	6	11	76	.2	9
8900N 9675E	5	11	54	.1	11
8900N 9700E	3	4	18	.1	2
8900N 9725E	2	5	20	.1	2
8900N 9750E	5	10	50	.1	9
8900N 9775E	3	14	41	.1	6
8900N 9800E	4	7	26	.1	4
STD C	57	39	132	7.4	18

SAMPLE#	CU PPM	PB PPM	ZN PPM	AG PPM	AS PPM
8900N 9825E	8	9	67	.1	5
8900N 9850E	19	6	80	.2	11
8900N 9875E	10	5	89	.1	3
8900N 9900E	18	10	66	.5	10
8900N 9925E	32	6	60	.7	9
8900N 9950E	15	7	13	.1	2
8900N 9975E	7	16	87	.1	17
8900N 10000E	8	13	143	.2	23
8900N 10025E	9	15	98	.4	20
8900N 10050E	11	18	189	.2	203
8900N 10075E	5	14	81	.3	279
8900N 10100E	5	8	56	.1	8
8900N 10125E	6	12	49	.3	29
8900N 10150E	22	5	52	.3	5
8900N 10175E	37	5	67	.2	6
8900N 10200E	10	9	42	.2	11
8900N 10225E	5	8	32	.2	10
8900N 10250E	7	4	37	.1	4
8900N 10275E	6	5	52	.1	12
8900N 10300E	4	6	13	.2	2
8900N 10325E	4	3	11	.2	2
8900N 10350E	7	3	15	.1	2
8900N 10375E	14	11	59	.1	16
8900N 10400E	41	20	128	.5	38
8900N 10425E	29	18	68	.3	26
8900N 10450E	21	14	120	.3	14
8900N 10475E	34	14	85	.5	24
8900N 10500E	10	16	47	.3	18
8800N 9325E	27	9	137	.3	6
8800N 9350E	9	8	50	.1	3
8800N 9375E	14	12	114	.6	5
8800N 9400E	19	11	96	.3	12
8800N 9425E	10	7	52	.1	3
8800N 9450E	9	16	104	.3	2
8800N 9475E	5	15	65	.2	3
8800N 9500E	3	5	42	.2	2
STD C	58	42	130	7.3	41

SAMPLE#	CU PPM	PB PPM	ZN PPM	AG PPM	AS PPM
8800N 9525E	2	8	36	.1	10
8800N 9550E	6	3	14	.1	5
8800N 9575E	4	2	56	.1	11
8800N 9600E	3	2	12	.1	5
8800N 9625E	6	6	37	.2	12
8800N 9650E	4	5	30	.1	10
8800N 9675E	7	2	17	.2	10
8800N 9700E	48	8	62	.3	4
8800N 9725E	2	7	17	.1	5
8800N 9750E	4	4	34	.1	8
8800N 9775E	6	3	20	.1	5
8800N 9800E	19	6	15	.2	2
8800N 9825E	26	7	77	.2	17
8800N 9850E	16	8	63	.4	10
8800N 9875E	31	8	77	.6	10
8800N 9900E	9	16	43	.1	15
8800N 9925E	8	10	57	.2	19
8800N 9950E	7	11	85	.1	28
8800N 9975E	10	18	86	.3	29
8800N 10000E	7	10	80	.2	50
8800N 10025E	8	7	46	.2	13
8800N 10050E	55	24	335	.7	49
8800N 10075E	25	14	119	.3	73
8800N 10100E	24	30	154	.6	54
8800N 10125E	26	23	99	.3	34
8800N 10150E	27	31	143	.2	50
8800N 10175E	23	19	110	.3	84
8800N 10200E	9	12	84	.1	24
8800N 10225E	19	11	67	.6	14
8800N 10250E	7	5	39	.2	13
8800N 10275E	25	22	95	.2	27
8800N 10300E	27	12	59	.5	9
8800N 10325E	25	14	75	.2	19
8800N 10350E	20	8	40	.3	4
8800N 10375E	7	11	50	.3	17
8800N 10400E	4	9	48	.1	17
STD C	59	40	138	7.2	59

SAMPLE#	CU PPM	PB PPM	ZN PPM	AG PPM	AS PPM
8800N 10425E	3	3	17	.1	2
8800N 10450E	5	11	56	.5	12
8800N 10475E	4	4	19	.3	3
8800N 10500E	10	13	76	.2	20
8700N 9350E	21	15	119	.4	13
8700N 9375E	20	13	158	.5	5
8700N 9400E	16	17	117	.4	11
8700N 9425E	7	14	102	.2	7
8700N 9450E	3	28	68	.2	5
8700N 9475E	11	21	207	1.3	14
8700N 9500E	2	4	25	.1	2
8700N 9525E	4	9	88	.1	8
8700N 9550E	1	2	28	.3	4
8700N 9575E	4	6	38	.2	6
8700N 9600E	5	11	40	.1	2
8700N 9625E	1	8	32	.1	12
8700N 9650E	3	8	38	.1	6
8700N 9675E	2	2	16	.2	2
8700N 9700E	4	8	33	.1	8
8700N 9725E	3	6	29	.1	4
8700N 9750E	4	7	47	.1	11
8700N 9775E	12	10	53	.1	6
8700N 9800E	2	2	9	.1	2
8700N 9825E	23	2	56	.3	3
8700N 9850E	20	13	69	.3	11
STD C	60	40	128	7.6	38
8700N 9875E	19	11	93	.3	8
8700N 9900E	6	8	40	.1	8
8700N 9925E	6	9	51	.1	23
8700N 9950E	7	12	92	.1	21
8700N 9975E	9	23	74	.1	16
8700N 10000E	9	6	40	.2	18
8700N 10025E	9	14	108	.3	45
8700N 10050E	7	10	94	.2	29
8700N 10075E	12	42	175	.1	22
8700N 10100E	4	6	72	1.0	8
8700N 10125E	7	16	130	.4	35

SAMPLE#	CU PPM	PB PPM	ZN PPM	AG PPM	AS PPM
8700N 10150E	7	11	72	.3	30
8700N 10175E	9	14	157	.4	35
8700N 10200E	6	2	26	.1	4
8700N 10225E	50	13	83	.7	13
8700N 10250E	13	19	81	.2	31
8700N 10275E	1	3	14	.1	2
8700N 10300E	16	22	59	.2	17
8700N 10325E	31	23	87	.2	20
8700N 10350E	30	17	74	.5	15
8700N 10375E	14	17	78	.6	17
8700N 10400E	14	9	59	.3	33
8700N 10425E	17	5	21	.3	6
8700N 10450E	23	24	67	.3	28
8700N 10475E	10	14	83	.4	28
STD C	60	40	126	7.2	41
8700N 10500E	10	16	86	.3	16
8600N 9325E	18	2	235	.1	2
8600N 9350E	11	2	183	.3	2
8600N 9375E	8	2	35	.2	3
8600N 9400E	14	11	73	.3	10
8600N 9425E	17	7	70	.6	2
8600N 9450E	9	6	62	.6	10
8600N 9475E	10	20	85	.2	16
8600N 9500E	11	20	99	.4	17
8600N 9525E	1	7	13	.1	2
8600N 9550E	1	3	18	.1	2
8600N 9575E	4	7	40	.2	4
8600N 9600E	15	13	47	1.2	6
8600N 9625E	3	4	22	.2	3
8600N 9650E	1	5	14	.2	2
8600N 9675E	3	9	17	.1	2
8600N 9700E	4	11	28	.2	9
8600N 9725E	11	8	30	.2	9
8600N 9750E	13	20	60	.2	22
8600N 9775E	14	11	59	.1	8
8600N 9800E	5	4	40	.1	8
8600N 9825E	57	19	156	.9	22

SAMPLE#	CU PPM	PB PPM	ZN PPM	AG PPM	AS PPM
8600N 9850E	63	10	149	1.0	23
8600N 9875E	65	7	130	.6	7
8600N 9900E	16	2	26	.1	3
8600N 9925E	8	2	32	.1	8
8600N 9950E	32	15	118	.4	18
8600N 9975E	93	14	205	.4	7
8600N 10000E	58	20	208	.7	31
8600N 10025E	9	4	30	.1	2
8600N 10050E	7	7	95	.1	17
8600N 10075E	11	14	141	.2	63
8600N 10100E	9	11	84	.1	16
8600N 10125E	8	7	188	.2	39
8600N 10150E	10	14	283	.4	41
8600N 10175E	10	17	122	.1	30
8600N 10200E	14	17	140	.5	45
8600N 10225E	3	7	34	.3	5
8600N 10250E	5	7	35	.2	12
8600N 10275E	19	8	40	.1	2
8600N 10300E	11	7	64	.2	13
8600N 10325E	14	20	140	.3	20
8600N 10350E	6	5	57	.1	12
8600N 10375E	6	5	49	.2	16
8600N 10400E	12	7	79	.8	12
8600N 10425E	9	6	75	.1	10
8600N 10450E	13	4	72	.2	28
8600N 10475E	7	5	64	.1	10
8600N 10500E	20	14	90	.4	26
8500N 10000E	27	27	309	.4	33
STD C	60	36	129	6.5	41
8500N 10025E	44	22	83	.5	16
8500N 10050E	9	13	181	.2	49
8500N 10075E	11	16	238	.3	71
8500N 10100E	14	62	156	.2	126
8500N 10125E	19	201	576	.5	170
8500N 10150E	34	106	116	.7	71
8500N 10175E	41	14	76	.6	89
8500N 10200E	30	10	94	.4	30

SAMPLE#	CU PPM	PB PPM	ZN PPM	AG PPM	AS PPM
8500N 10225E	6	11	76	.2	19
8500N 10250E	11	7	75	.1	12
8500N 10275E	52	7	140	.4	10
8500N 10300E	35	4	104	.2	10
8500N 10325E	42	2	47	.5	2
8500N 10350E	27	2	60	.4	5
8500N 10375E	36	17	85	.5	11
8500N 10400E	22	28	89	.6	26
8500N 10425E	14	10	71	.2	14
8500N 10450E	18	8	45	.3	10
8500N 10475E	36	18	145	.6	11
8500N 10500E	20	13	75	.2	16
8400N 10000E	26	9	121	.3	22
8400N 10025E	23	2	59	.3	15
8400N 10050E	33	5	93	.4	15
8400N 10075E	11	10	81	.2	44
8400N 10100E	16	23	144	.2	174
8400N 10125E	8	15	67	.5	109
8400N 10150E	16	30	283	.3	72
8400N 10175E	14	14	135	.2	72
8400N 10200E	20	11	153	.2	53
8400N 10225E	6	12	54	.6	80
8400N 10250E	12	14	69	.3	13
8400N 10275E	22	11	55	.1	25
8400N 10300E	12	10	66	.2	23
8400N 10325E	20	10	76	.1	21
8400N 10350E	13	5	36	.1	6
8400N 10375E	32	14	50	.2	23
8400N 10400E	23	15	86	.2	25
8400N 10425E	14	17	130	.1	17
8400N 10450E	10	7	66	.1	10
8400N 10475E	33	24	89	.5	14
8400N 10500E	15	15	66	.2	14
8300N 10000E	24	22	200	.4	57
8300N 10025E	20	30	126	.1	145
8300N 10050E	44	62	173	.3	231
STD C	58	37	133	7.2	41

SAMPLE#	CU PPM	PB PPM	ZN PPM	AG PPM	AS PPM
8300N 10075E	33	29	95	.3	42
8300N 10100E	12	4	23	.1	4
8300N 10125E	56	33	124	.6	132
8300N 10150E	54	20	102	.2	92
8300N 10175E	15	17	100	.1	52
8300N 10200E	12	14	87	.1	137
8300N 10225E	24	24	228	.1	28
8300N 10250E	28	10	42	.2	9
8300N 10275E	26	19	122	.2	19
8300N 10300E	67	13	91	.3	4
8300N 10325E	51	15	103	.1	15
8300N 10350E	60	12	99	.5	9
8300N 10375E	48	17	92	.1	13
8300N 10400E	10	7	60	.1	18
STD C	62	40	137	7.6	41
8300N 10425E	262	18	93	.1	45
8300N 10450E	33	7	79	.1	23
8300N 10475E	13	7	36	.1	9
8300N 10500E	6	2	12	.1	2
8200N 10000E	20	14	74	.2	21
8200N 10025E	43	20	91	.1	47
8200N 10050E	13	9	71	.1	22
8200N 10075E	24	13	56	.1	28
8200N 10100E	9	5	94	.4	18
8200N 10125E	21	35	199	.4	59
8200N 10150E	10	10	95	.1	11
8200N 10175E	8	5	63	.2	12
8200N 10200E	9	4	53	.1	6
8200N 10225E	37	6	116	.2	6
8200N 10250E	21	7	92	.1	15
8200N 10275E	13	2	44	.1	2
8200N 10300E	18	11	90	.1	25
8200N 10325E	64	10	115	.5	10
8200N 10350E	39	14	116	.2	13
8200N 10375E P	152	13	150	.7	18
8200N 10400E	12	2	27	.2	2
8200N 10425E	30	12	103	.2	16

SAMPLE#	CU PPM	PB PPM	ZN PPM	AG PPM	AS PPM
8200N 10450E <i>P</i>	40	3	104	.1	5
8200N 10475E <i>P</i>	32	8	114	.1	5
8200N 10500E	11	8	62	.1	13
9100N	24	19	72	.2	13

ACME ANALYTICAL LABORATORIES
852 E. HASTINGS ST. VANCOUVER B.C. V6A 1R6
PHONE 253-3158 DATA LINE 251-1011

DATE RECEIVED: AUG 5 1987

DATE REPORT MAILED: *Aug 11/87*

GEOCHEMICAL ICP ANALYSIS

.500 GRAM SAMPLE IS DIGESTED WITH 3ML 3-1-2 HCL-HNO3-H2O AT 95 DEG.C FOR ONE HOUR AND IS DILUTED TO 10 ML WITH WATER.
THIS LEACH IS PARTIAL FOR MN FE CA P LA CR MG BA TI B W AND LIMITED FOR NA AND K. AU DETECTION LIMIT BY ICP IS 3 PPM.
- SAMPLE TYPE: SOIL

ASSAYER: *D. Toye* DEAN TOYE, CERTIFIED B.C. ASSAYER

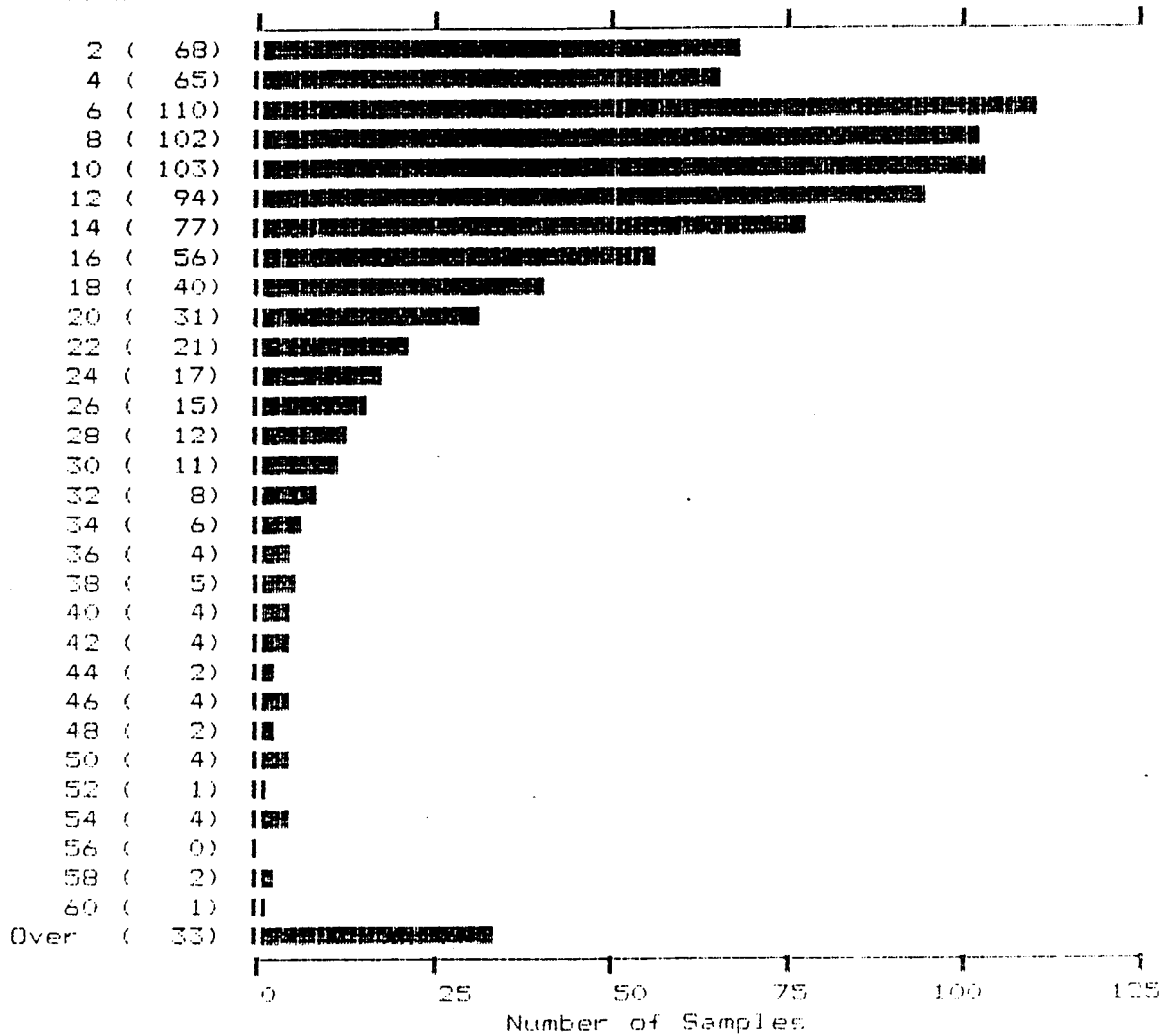
STRATO GEOLOGICAL PROJECT-BARB File # 87-2994

SAMPLE#	CU PPM	PB PPM	ZN PPM	AG PPM	AS PPM
10050N 9250E	13	22	59	.1	12
10050N 9275E	20	23	87	.2	14
10050N 9300E	16	20	62	.2	13
10050N 9325E	15	18	67	.1	9
10050N 9350E	8	4	162	.2	3
10050N 9375E	15	19	60	.1	12
10050N 9400E	21	221	115	.1	15
10050N 9425E	27	27	148	.1	6
10050N 9450E	72	1102	2190	1.6	94
10050N 9475E	119	2425	2693	6.3	145
10050N 9500E	16	54	124	.1	12
10050N 9525E	19	26	68	.1	7
10050N 9550E	35	27	117	.2	11
10050N 9575E	21	19	72	.1	10
10050N 9600E	28	31	137	.2	10
10050N 9625E	15	19	61	.1	6
10050N 9650E	24	24	83	.1	26
10050N 9675E	15	18	97	.1	6
10050N 9700E	42	46	106	.1	60
10050N 9725E	24	18	65	.1	6
10050N 9750E	22	20	83	.1	3
10050N 9775E	24	29	94	.1	2
STD C	58	42	132	7.4	39

STRATO GEOL. (87-2678+87-2681)

AS

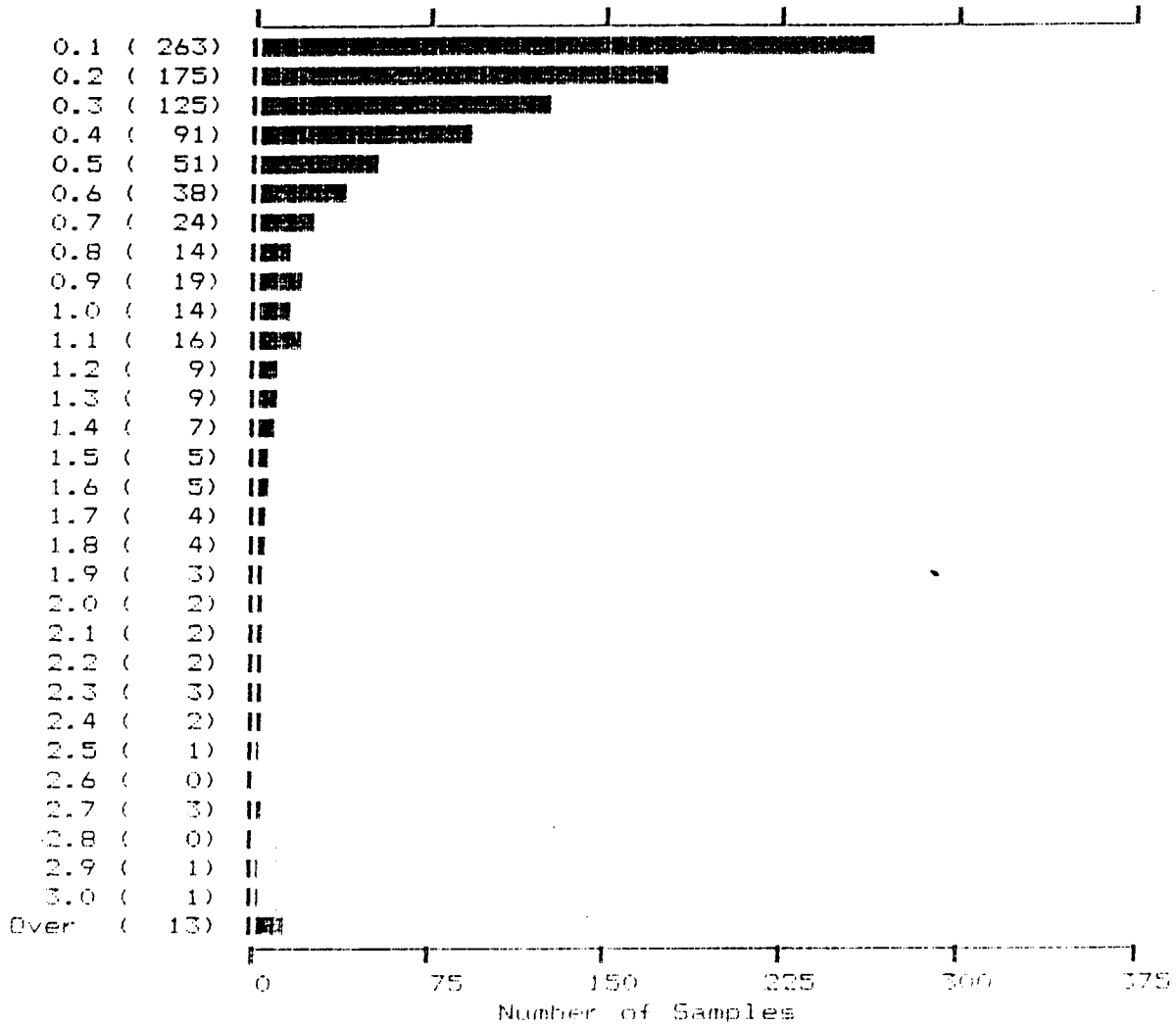
(PPM)



906 Samples Maximum: 279 Mean: 18
 Minimum: 0 Median: 11
 Standard Deviation: 22

STRATO GEOL. (87-2678+87-2681)

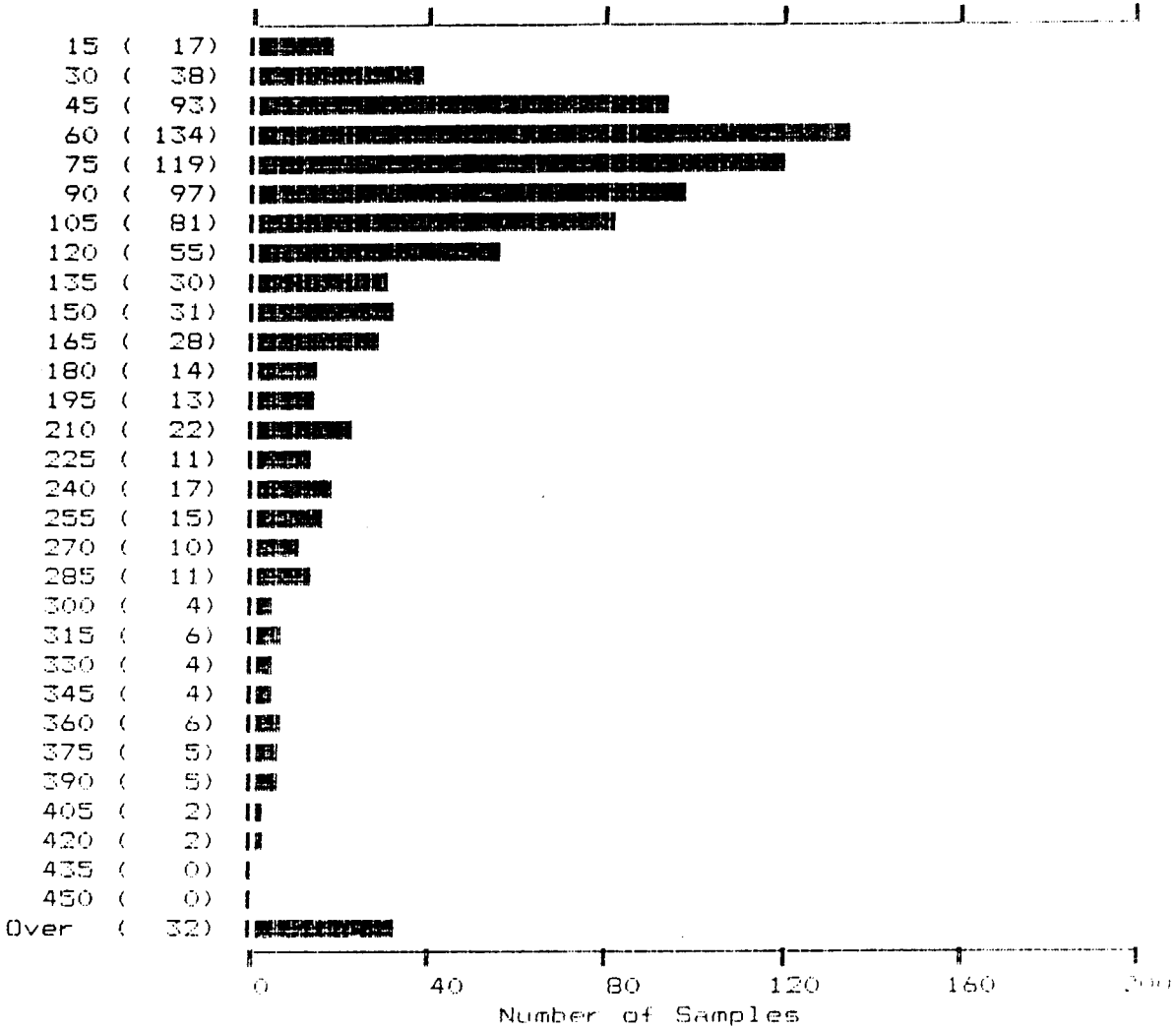
AG
(PPM)



906 Samples	Maximum:	7.9	Mean:	0.5
	Minimum:	0.1	Median:	0.3
			Standard Deviation:	0.7

STRATO GEOL. (87-2678+87-2681)

ZN
(PPM)



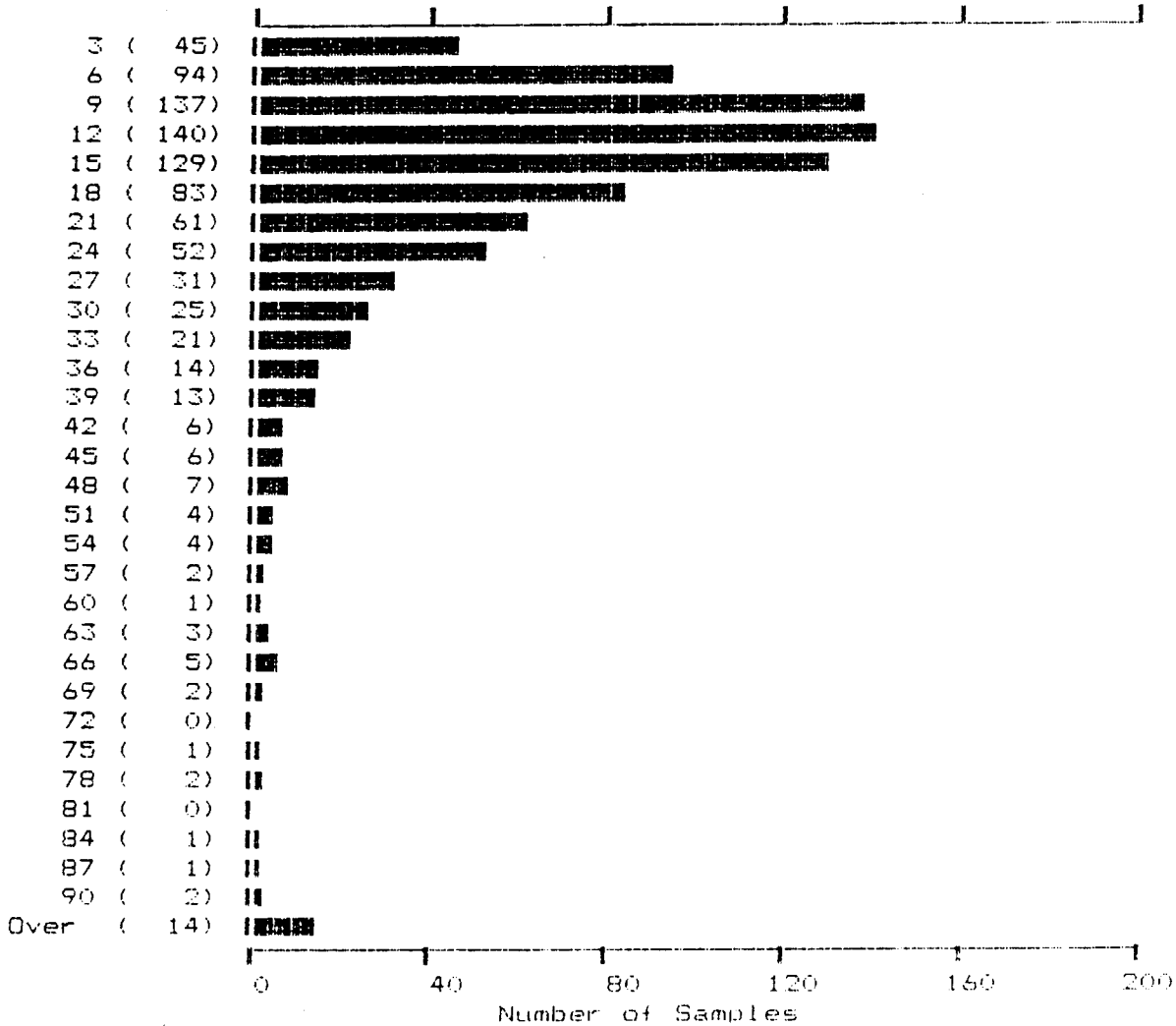
906 Samples

Maximum: 5636
Minimum: 6

Mean: 136
Median: 84
Standard Deviation: 240

STRATO GEOL. (87-2678+87-2681)

FB
(PPM)



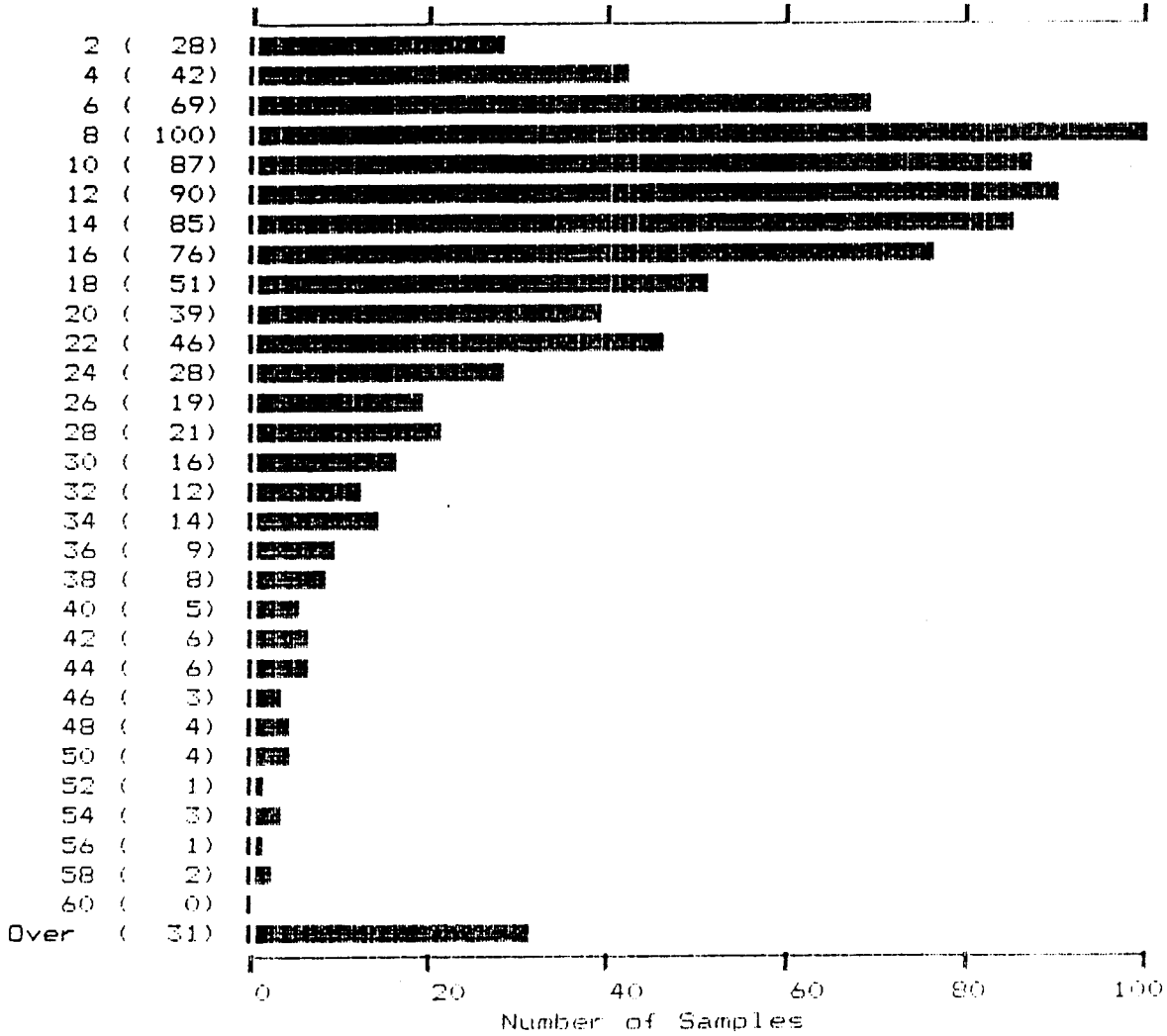
906 Samples

Maximum: 435
Minimum: 2

Mean: 19
Median: 13
Standard Deviation: 25

STRATO GEOL. (87-2678+87-2681)

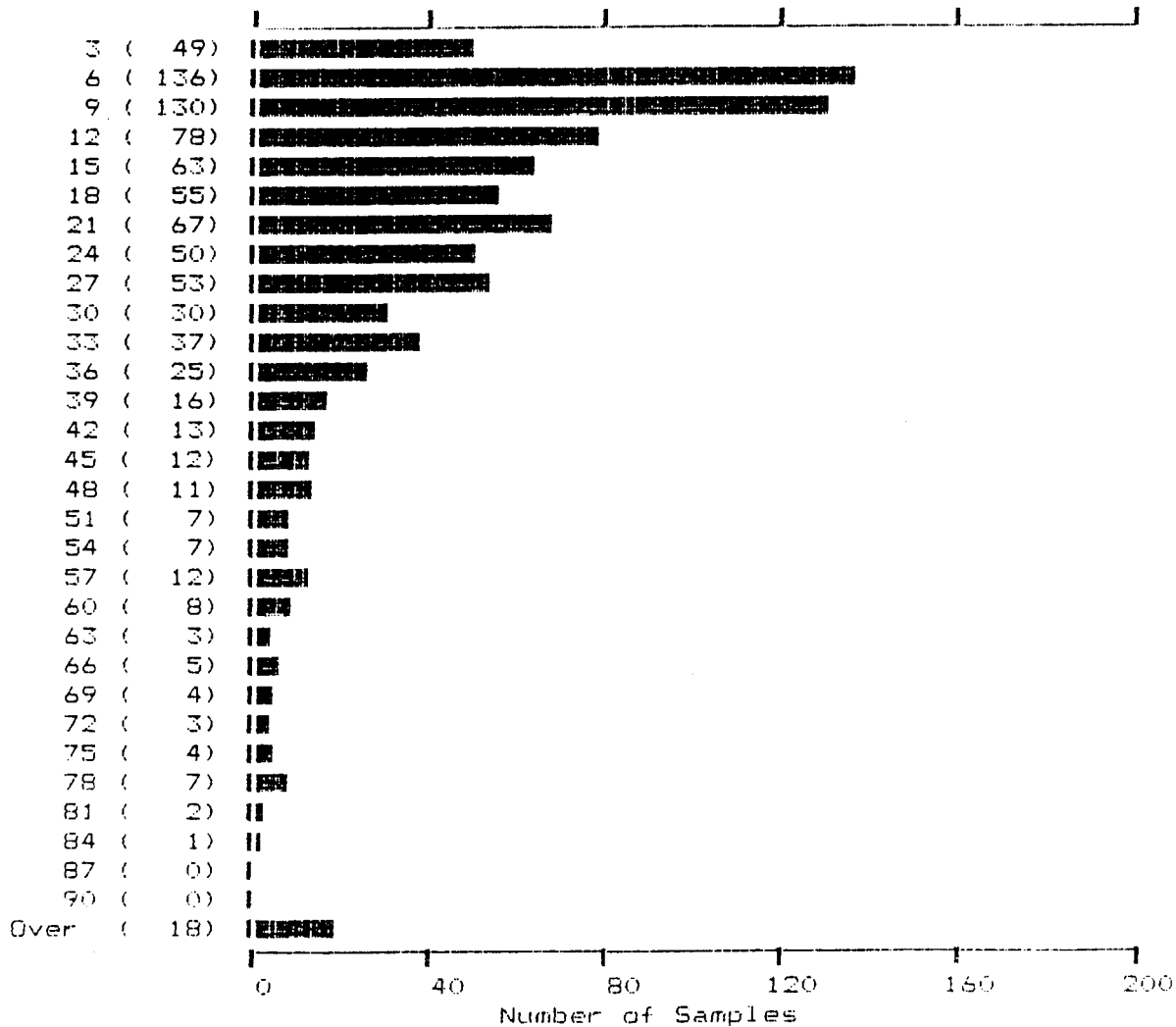
Pb
(PPM)



906 Samples	Maximum:	435	Mean:	19
	Minimum:	2	Median:	17
			Standard Deviation:	25

STRATO GEOL. (87-2678+87-2681)

CU
(PPM)



906 Samples	Maximum:	262	Mean:	22
	Minimum:	1	Median:	15
			Standard Deviation:	23

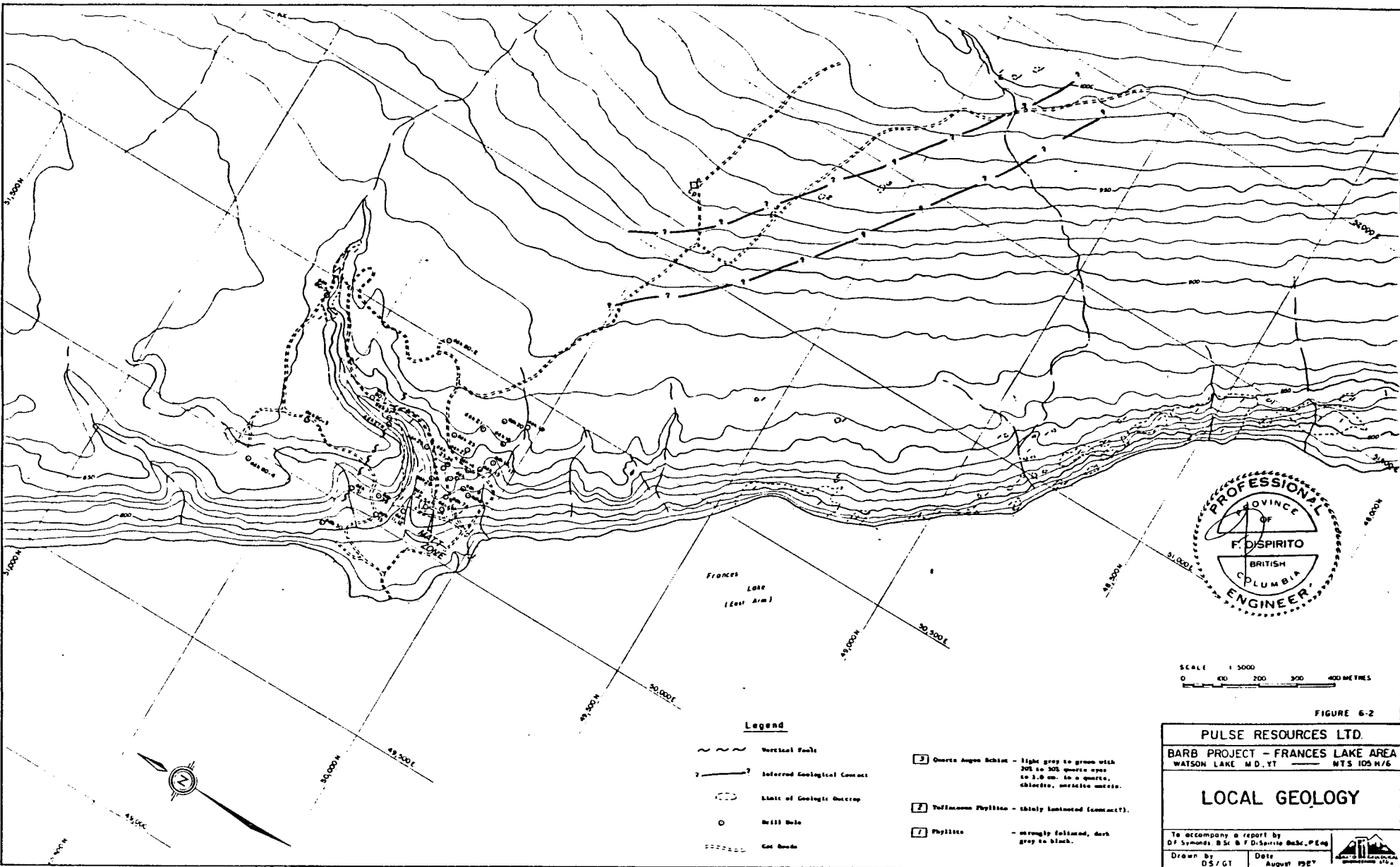
**APPENDIX IV
BIBLIOGRAPHY**

7. Thalenhorst, H. Geological Report on Mineral Claims, Matt-Jim-Berry-Lap-Apex-Don Joint Venture, Frances Lake Area, Yukon, September & October, 1970
8. Heenan, P.R. Report on Matt Berry Property for New Joburke Explorations Ltd., 1973
9. Walcott, P.E. Report on Gravity Survey of Matt Berry Prospect, 1975
10. Annis, R.C. A Survey of Known Mineral Deposits in Cranstone, D.A. Canada That Are Not Being Mined, Mineral Development Sector, Energy, Mines & Resources, 1976
11. Ikona, C.K. Geological Report on Barb Claim Group 1977
12. Ostler, J. Geological Report, Barb 1-15, 16-32 Mineral Claims, 1979
13. Ikona, C.K. Summary Report on the Barb Group, for Sovereign Metals Corporation, January 10, 1980
14. Mawer, A.B. Year End Report, Barb Option, Cominco Ltd., November, 1980

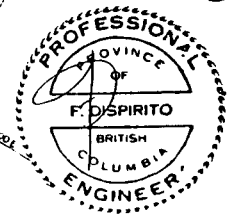
15. Hodson, T.W.

Year End Report, Barb Option, Cominco
Ltd., December 8, 1981

APPENDIX V
MAPS - Figures 6-2 through 8-5



Frances Lake
(East Arm)



SCALE 1:5000
0 100 200 300 400 METRES

FIGURE 5-2

PULSE RESOURCES LTD.
BARB PROJECT - FRANCES LAKE AREA
WATSON LAKE M.D., Y.T. MTS 105 H/6

LOCAL GEOLOGY

To accompany a report by
D.F. Symonds & S. & F. Di Spirito B.Sc., P.Eng.
Drawn by 05/GT Date August 1987



Legend

- Vertical Fault
- Inferred Geological Contact
- Limit of Geologic Outcrop
- Drill Hole
- Gas Seep
- Queen Anne Schist - light gray to green with 30% to 50% quartz veins to 3.0 m. in a quartz, chlorite, sericite matrix.
- Volcanic Phyllite - thinly laminated (compact).
- Phyllite - strongly foliated, dark gray to black.

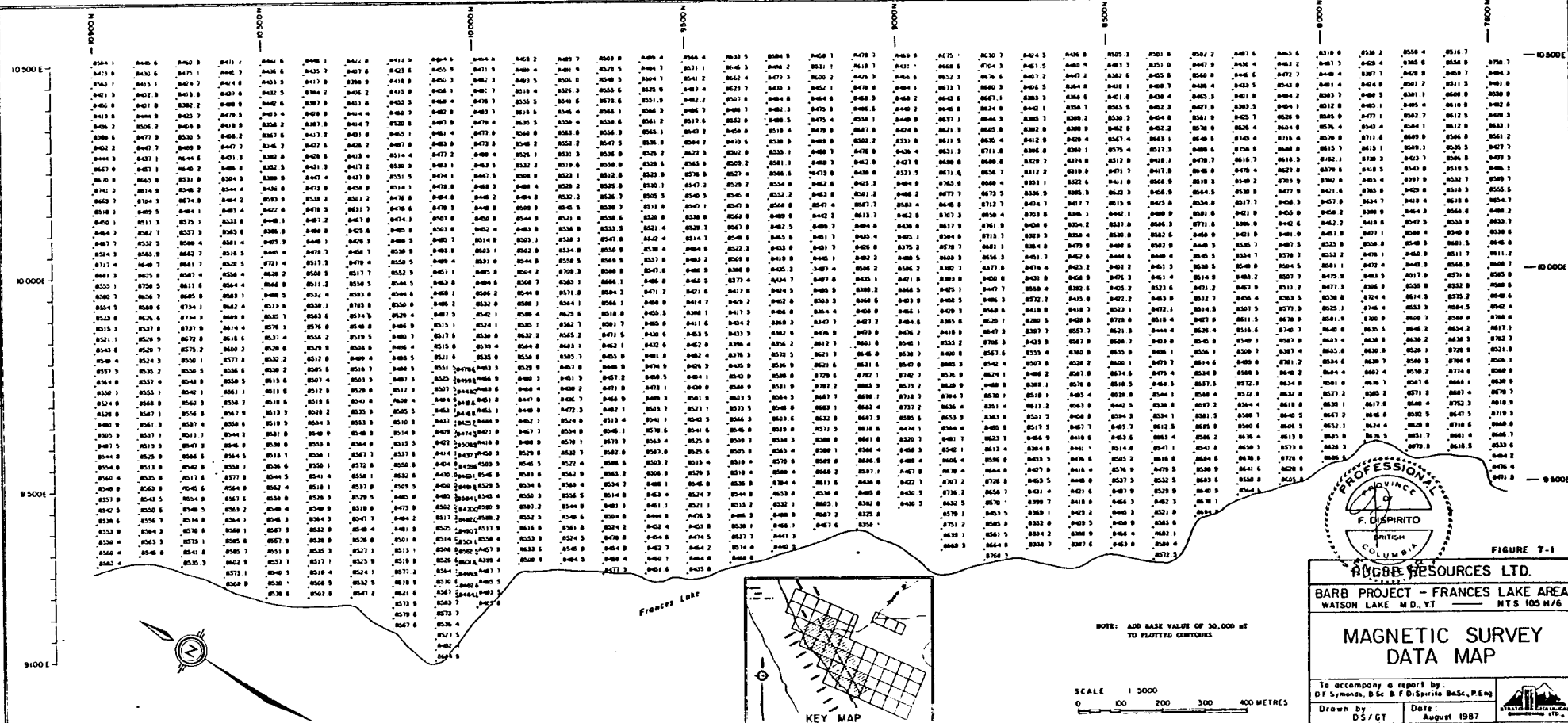


FIGURE 7-1

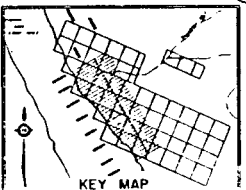
ROGGE RESOURCES LTD.
 BARB PROJECT - FRANCES LAKE AREA
 WATSON LAKE M.D., Y.T. NTS 105 H/6

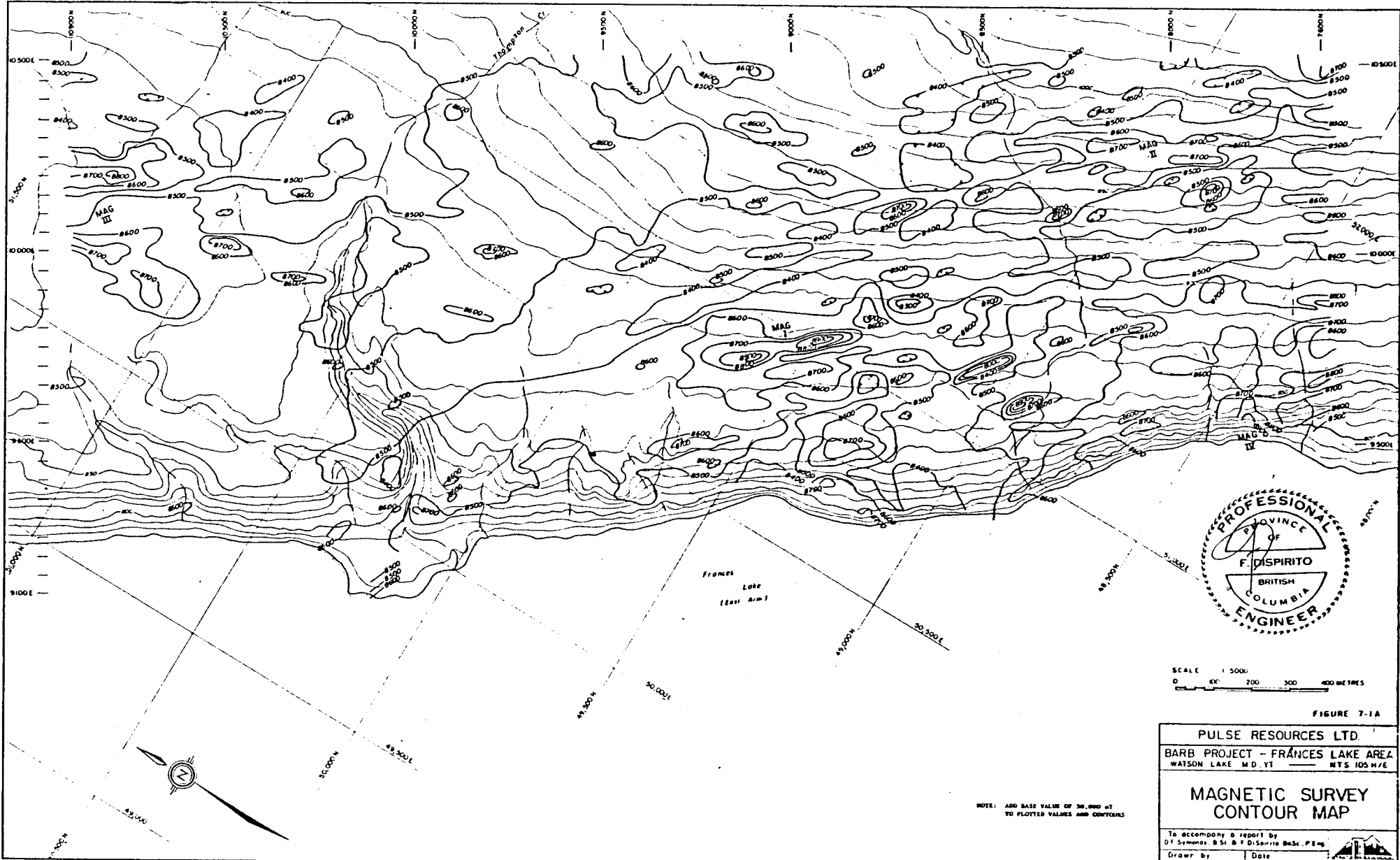
**MAGNETIC SURVEY
 DATA MAP**

To accompany a report by:
 DF Symons, B Sc & F DiSpirito BSc, P.Eng
 Drawn by DS/GT Date August 1987

NOTE: ADD BASE VALUE OF 30,000 AT
 TO PLOTTED CONTOURS

SCALE 1:5000
 0 100 200 300 400 METRES





SCALE 1:5000
0 200 300 400 METRES

FIGURE 7-1A

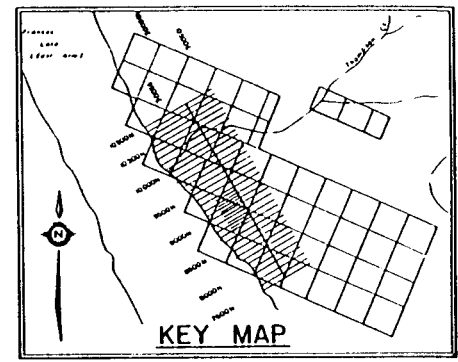
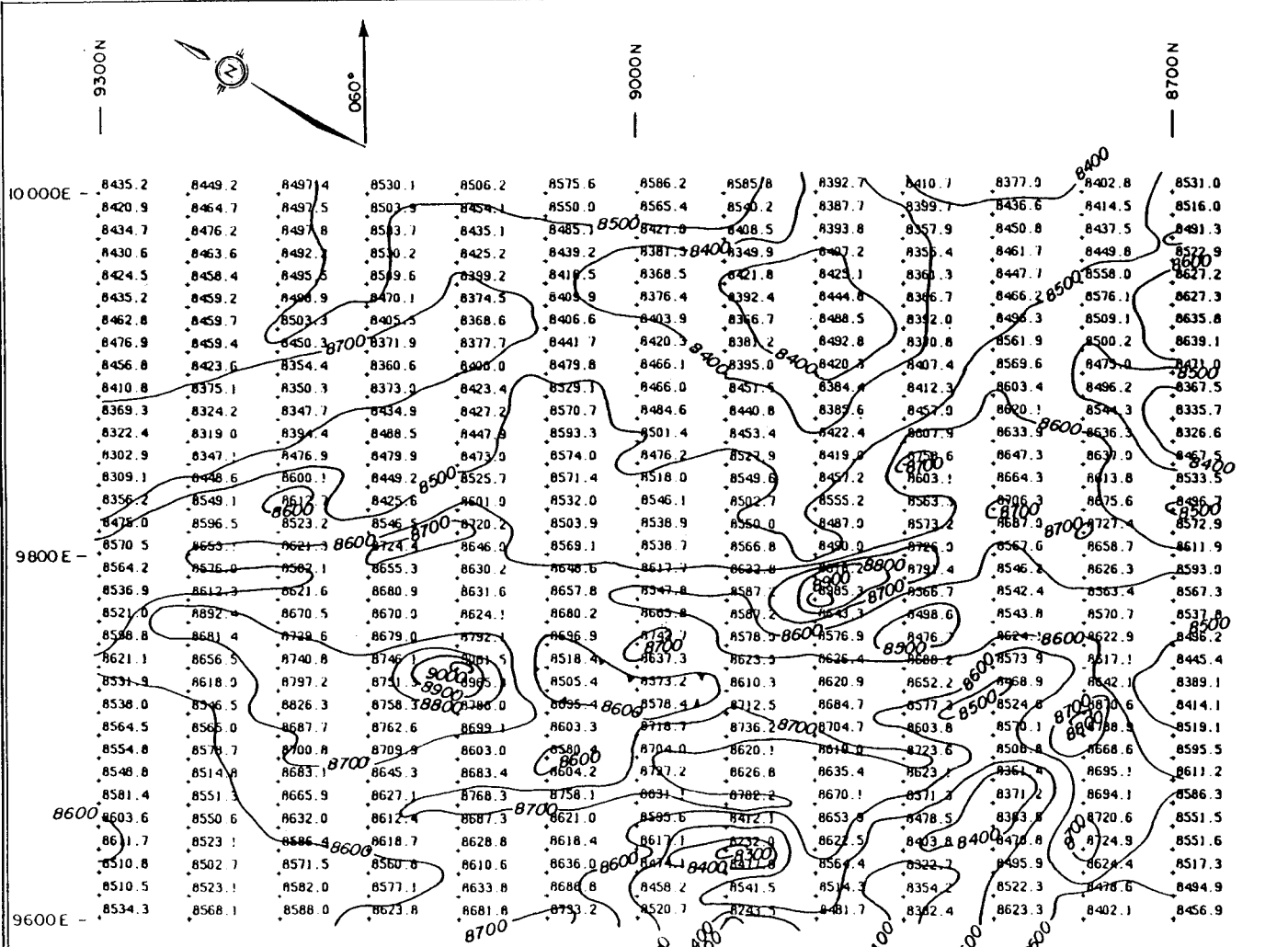
PULSE RESOURCES LTD.
 BARB PROJECT - FRANCES LAKE AREA
 WATSON LAKE M.D. Y.T. MTS 105 M/E

**MAGNETIC SURVEY
 CONTOUR MAP**

In accompany & report by
 Of Symbols, S.S. & F. DiSpirito Engr. P.Eng.

Drawn by: DS/GT Date: August 1987

NOTE: ADD BASE VALUE OF 30,000 FT
 TO PLOTTED VALUES AND CONTOURS



NOTE: ADD BASE VALUE OF 50,000 nT TO PLOTTED VALUES & CONTOURS
CONTOUR INTERVAL 100 nT

FIGURE 7-2

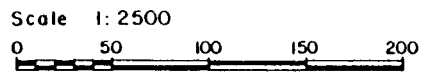
PULSE RESOURCES LTD.

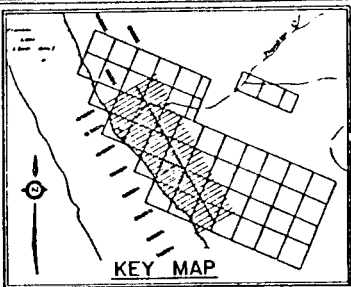
BARB PROJECT - FRANCES LAKE AREA
WATSON LAKE M.D., Y.T. NTS 105 H/6

MAGNETIC SURVEY CONTOUR MAP
DETAIL SURVEY ANOMALY "MAG I"

To accompany a report by:
D.F. Symonds, B.Sc. & F. Di Spirito BaSc, P.Eng.

Drawn by: DS/GT Date: August 1987





CONTOUR VALUE OF 0.5 ppm - WEAKLY ANOMALOUS
0.7 ppm - ANOMALOUS

△ - SINGLE STATION ANOMALOUS SAMPLE

AGI - SIGNIFICANT ANOMALIES
AGII

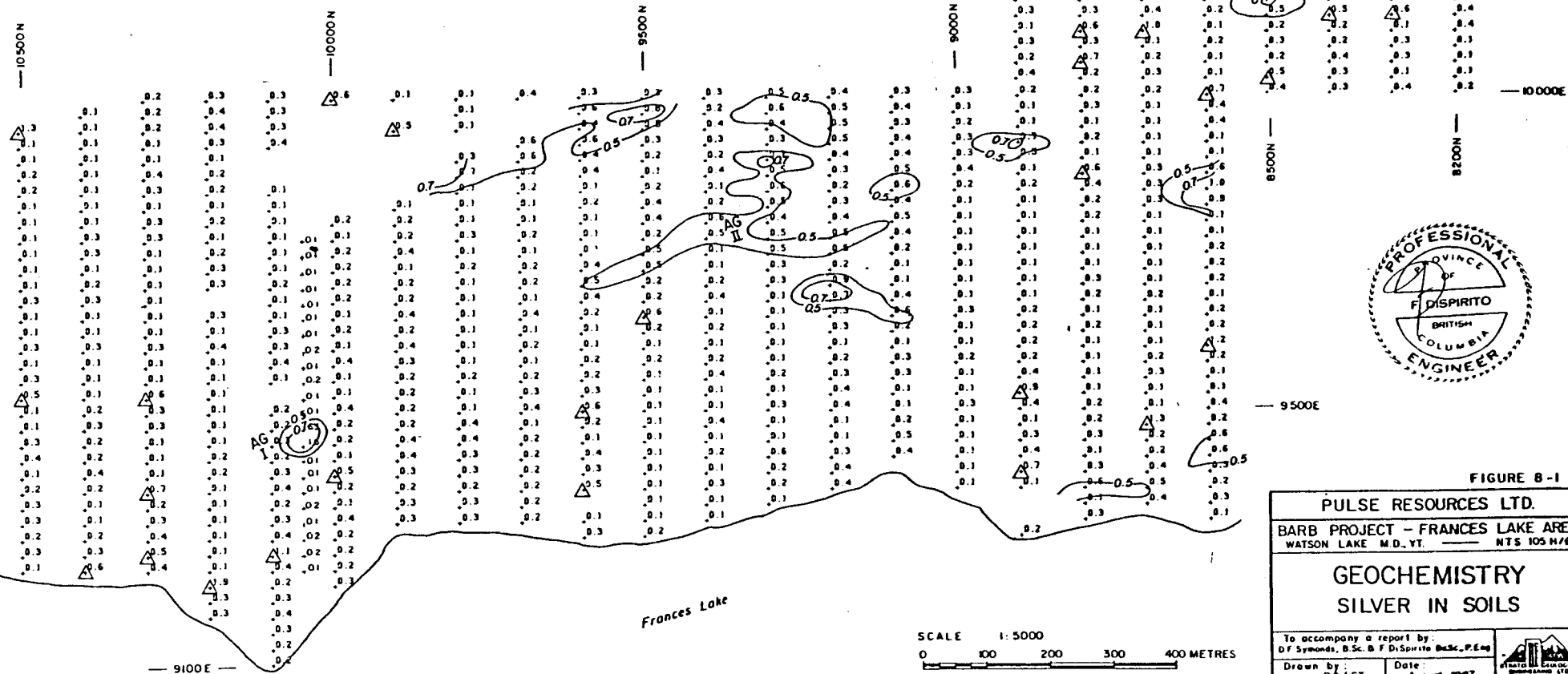


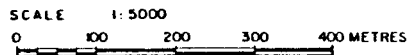
FIGURE B-1

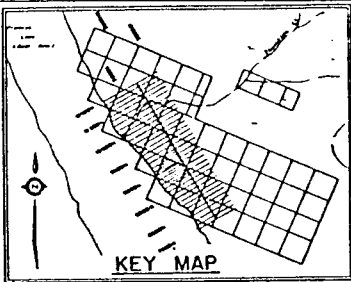
PULSE RESOURCES LTD.
BARB PROJECT - FRANCES LAKE AREA
 WATSON LAKE M.D., Y.T. NTS 105 H/6

GEOCHEMISTRY
SILVER IN SOILS

To accompany a report by:
 D.F. Symonds, B.Sc. & F. DiSpirito B.Sc., P.Eng.

Drawn by: D.S./GT Date: August 1987





CONTOUR VALUE OF 30.0 ppm - WEAKLY ANOMALOUS
 CONTOUR VALUE OF 45.0 ppm - ANOMALOUS

△ - SINGLE STATION ANOMALOUS SAMPLE

PBI - SIGNIFICANT ANOMALIES
 PBII

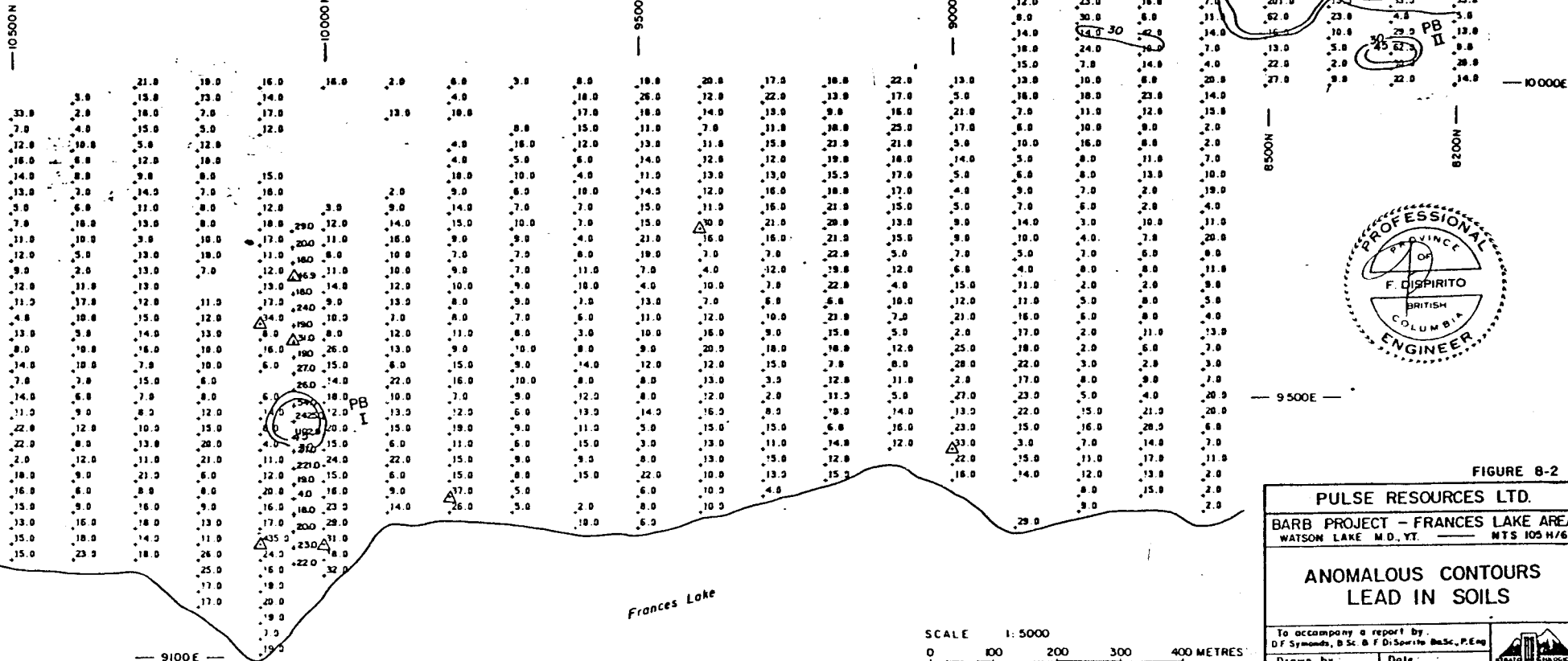


FIGURE 8-2

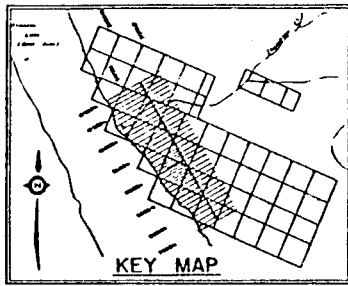
PULSE RESOURCES LTD.
 BARB PROJECT - FRANCES LAKE AREA
 WATSON LAKE M.D. Y.T. — NTS 105 H/6

**ANOMALOUS CONTOURS
 LEAD IN SOILS**

To accompany a report by
 D.F. Symonds, B.Sc. & F. DiSpirito B.Sc., P.E. Eng.

Drawn by: DS/GT Date: August 1987





CONTOUR VALUE OF 130.0 ppm - WEAKLY ANOMALOUS
 CONTOUR VALUE OF 185.0 ppm - ANOMALOUS

△ - SINGLE STATION ANOMALOUS SAMPLE

ZNI - SIGNIFICANT ANOMALIES

ZNII

ZNIII

ZNIV

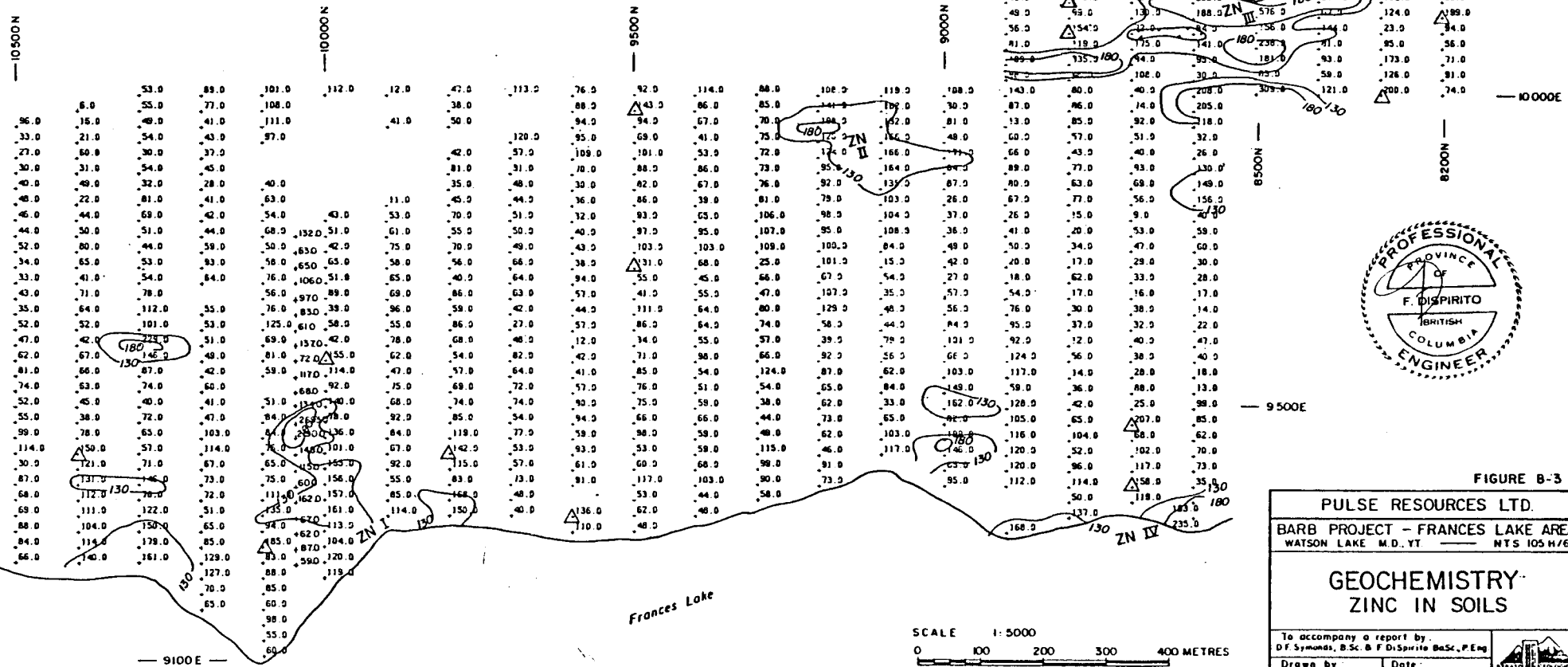


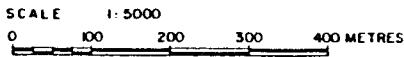
FIGURE B-3

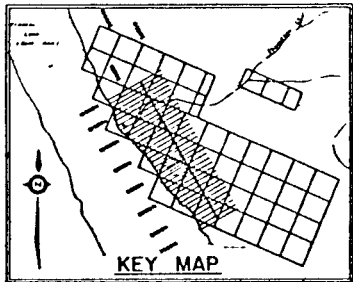
PULSE RESOURCES LTD.
 BARB PROJECT - FRANCES LAKE AREA
 WATSON LAKE M.D. YT NTS 105 H/6

GEOCHEMISTRY - ZINC IN SOILS

To accompany a report by
 D.F. Symonds, B.Sc. & F. DiSpirito B.Sc., P.Eng

Drawn by DS/GT Date August 1987





CONTOUR VALUE OF 35.0 ppm - WEAKLY ANOMALOUS
55.0 ppm - ANOMALOUS

△ - SINGLE STATION ANOMALOUS SAMPLE

CU I - SIGNIFICANT ANOMALIES

CU III

CU IV

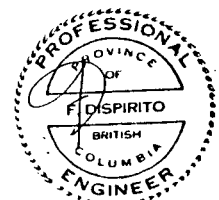
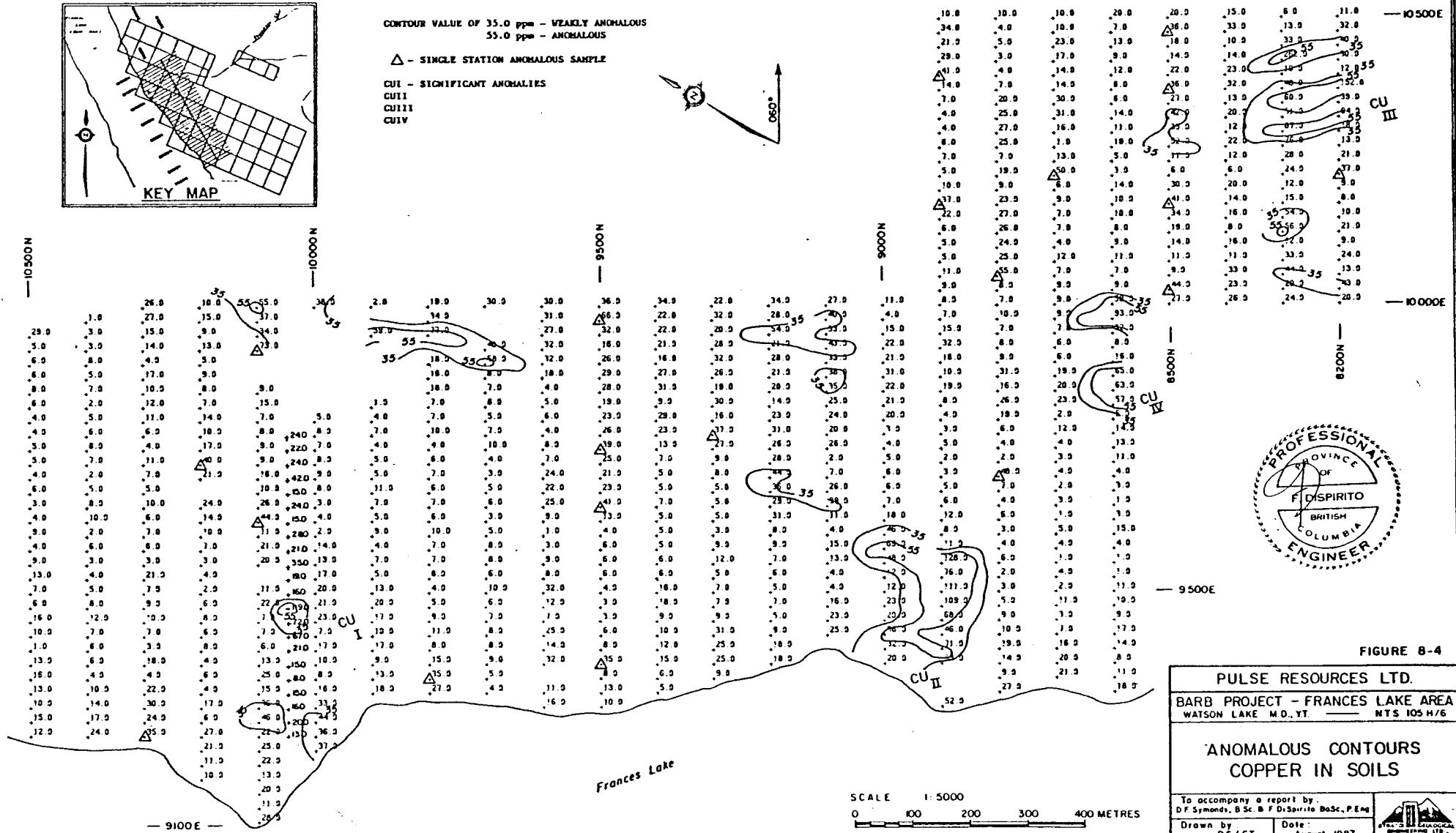


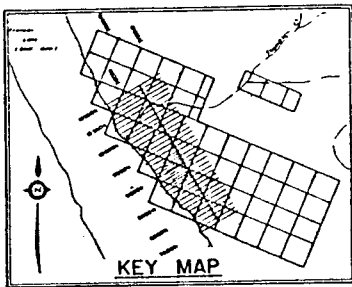
FIGURE B-4

PULSE RESOURCES LTD.
BARB PROJECT - FRANCES LAKE AREA
 WATSON LAKE M.D. Y.T. NTS 105 H/6

ANOMALOUS CONTOURS
COPPER IN SOILS

To accompany a report by:
 D.F. Symonds, B.Sc. & F. DiSpirito B.Sc., P.Eng.

Drawn by: D.S./GT Date: August 1987



CONTOUR VALUE OF 40.0 ppm - WEAKLY ANOMALOUS
65.0 ppm - ANOMALOUS

- △ - SINGLE STATION ANOMALOUS SAMPLE
- AS I - SIGNIFICANT ANOMALIES
- AS II
- AS III
- AS IV

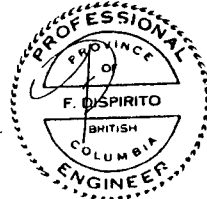
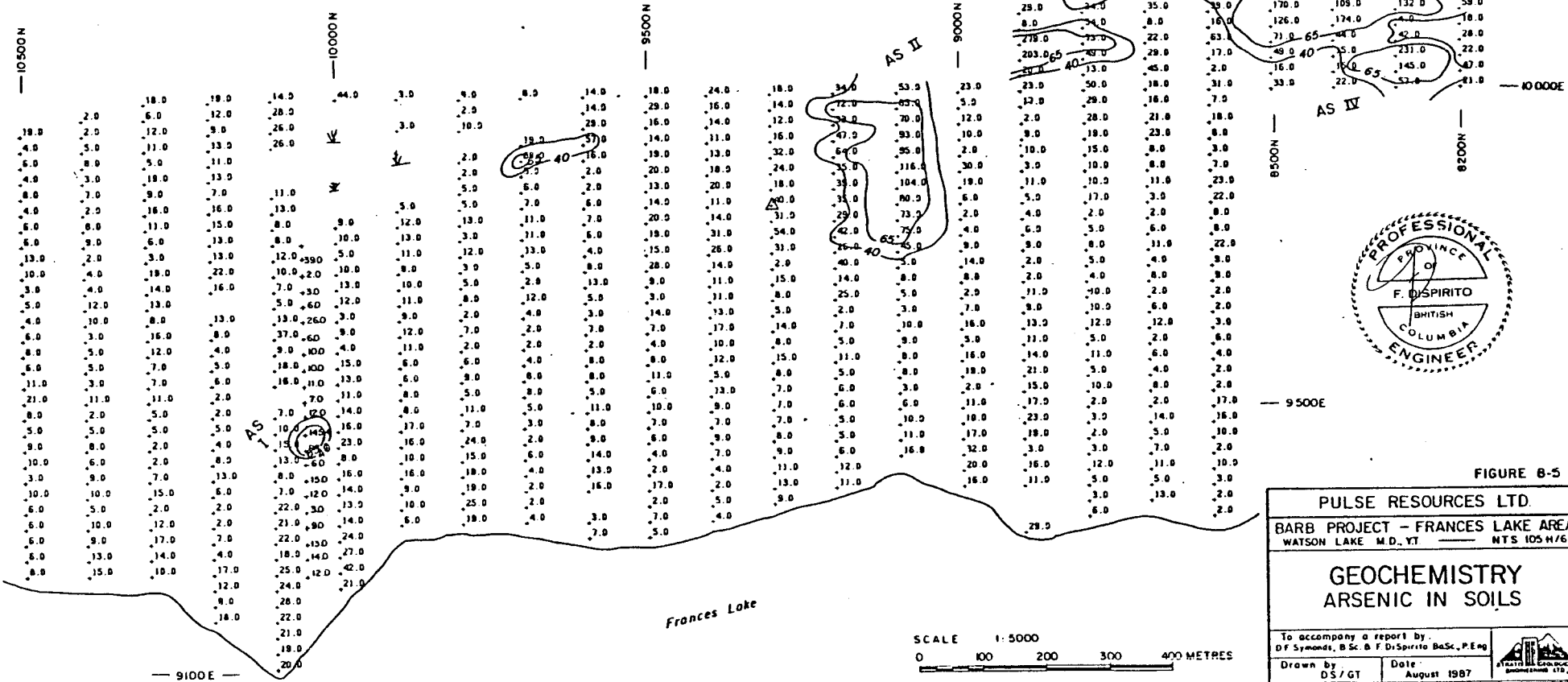


FIGURE 8-5

PULSE RESOURCES LTD.

BARB PROJECT - FRANCES LAKE AREA
WATSON LAKE M.D., YT NTS 105 H/6

GEOCHEMISTRY
ARSENIC IN SOILS

To accompany a report by:
DF Symonds, B.Sc. & F. DiSpirito B.Sc., P.Eng

Drawn by DS/GT Date August 1987