



exploration ltd.

**GEOLOGY · GEOPHYSICS
MINING ENGINEERING**

Suite #704-850 WEST HASTINGS STREET, VANCOUVER, B.C.
TELEPHONE (604) 681-0191 V6C 1E1

PROSPECTUS
May 5, 1988
062292

GEOLOGICAL REPORT

on the

WIND, RAIN AND SLEET CLAIMS

(LEFT CLEAR CREEK PROPERTY)

Dawson Mining Division - Yukon

Lat. $63^{\circ} 50'$ N. Long. $137^{\circ} 10'$ W.

N.T.S. 115 P/14

for

SECRET PASS MINERALS CORPORATION

by

Donald G. Allen, P. Eng. (B.C.)

November 27, 1987

Vancouver, B.C.

TABLE OF CONTENTS

SUMMARY	1
CONCLUSION	2
RECOMMENDATION	2
ESTIMATED COST OF RECOMMENDATION	3
INTRODUCTION	5
LOCATION, ACCESS, PHYSIOGRAPHY	5
CLAIM DATA	7
HISTORY	8
GEOLOGY	9
Regional Geology	9
Surficial Geology of the Clear Creek Area	10
Property Geology	10
Structure	11
MINERALIZATION	12
Tungsten-bearing skarns	12
Gold and Tungsten-bearing quartz vein stockworks	12
Tin-bearing Greisen-Breccia	13
Stratabound gold-bearing sulphides	13
SOIL GEOCHEMICAL SURVEYS	16
GEOPHYSICAL SURVEYS	17
REFERENCES	
CERTIFICATE	

ILLUSTRATIONS

Figure 1	Location Map	1:1,000,000	After p. 5
Figure 2	Access Map	1:250,000	After p. 5
Figure 3	Claim Map	1:50,000	After p. 7
Figure 4	Geology and Mineral Occurrence Map	1:500,000	After p. 9
Figure 5	Geological Map	1:250,000	After p. 10
Figure 6	Geology and Sample Sites, Harper Trench	1:1,000	After p. 14
Figure 7a	Geochemical Summary Map, Tungsten	1:250,000	After p. 16
Figure 7b	Geochemical Summary Map, Gold	1:250,000	After p. 16
Figure 8	Test Soil Sample Line	1:2,500	After p. 17

TABLE OF CONTENTS (Cont'd.)

ILLUSTRATIONS (Cont'd.)

Figure 9a	Induced Polarization Summary Map, Chargeability	1:250,000	After p. 17
Figure 9b	Induced Polarization Summary Map, Apparent Resistivity	1:250,000	After p. 17

TABLE

Table 1	Sample Descriptions	After p. 17
---------	---------------------	-------------

APPENDICES

Appendix I	Geochemical Results
Appendix II	Geophysical Report by Heminsley and White

SUMMARY

Secret Pass Minerals Corporation holds 150 claims (WIND, RAIN and SLEET claims) under option in the McQuesten River area of central Yukon. The property is situated at the head of Left Clear Creek, 70 kilometres northwest of Mayo and 110 kilometres east of Dawson. Access is via the Whitehorse-Dawson Highway to Barlow Lake and thence by dirt road to the property.

The property is underlain by metasedimentary rocks (phyllite, schist, quartzite, and minor limestone of the Proterozoic-Lower Cambrian "Grit Unit" which are intruded by a porphyritic quartz monzonite stock (Rhosobel Stock). Three types of tungsten and gold mineralization occur on the property: (1) tungsten-bearing calc-silicate skarns in limy metasedimentary rocks adjacent to the stock; (2) tungsten and gold-bearing quartz vein stockworks in the stock; and (3) stratabound gold-bearing pyritic metasedimentary rocks. Types 1 and 2 mineralization and tin-bearing greisens (five kilometres to the west) were evaluated by Canada Tungsten in 1981 and 1982. The company at that time apparently was interested mainly in tungsten, but the tungsten skarns on the property proved to be small and discontinuous. Although significant gold values were reported in individual veins in the stock work zone (up to 1.3 ounces per ton) and a 200 to 400 by 800 metre gold and tungsten soil anomaly was delineated, the property was abandoned with no follow-up drilling having been undertaken. Type 3 stratabound pyritic mineralization is a newly discovered type. Gold values of up to 0.29 ounces per ton occur over widths of about a metre in bedrock exposures at the bottom of a placer operation on Left Clear Creek. In September to October, 1987, Secret Pass Minerals acquired the property, conducted a program of line-cutting, 10 kilometres of induced polarization surveys and preliminary rock geochemical sampling. Purpose of the induced polarization was to delineate the sulphide distribution. Survey results were found to be positive and a positive correlation was found with the sulphides exposed in the trench. A follow-up exploration program is proposed.

CONCLUSION

Work to date has identified two significant gold exploration targets on the Left Clear Creek property: (1) Gold-bearing quartz vein stockworks in the Rhosgobel Stock and (2) stratabound gold-bearing pyritic metasediments. The induced polarization survey delineated an anomalous area of at least 500 metres by 200 metres. The anomalous readings obtained over the sulphide zone exposed in the placer trench and the correlation of trends indicate that the anomalies are significant. A follow-up exploration program is warranted.

RECOMMENDATION

A two-phase exploration program is highly recommended to evaluate the Left Clear Creek property. Phase I will comprise (1) extending the survey grid, induced polarization and magnetic surveys, and geochemical soil sampling to fully define drill targets on the pyrite zone (Harper Trench area), and (2) geological mapping, bulldozer trenching and bulk sampling on the stockwork zone (Rhosgobel grid). Should results be favourable, then a Phase II program of diamond drilling and additional trenching should be undertaken. Estimated costs of Phase I and II are \$110,000 and \$210,000 for a grand total of \$320,000.

ESTIMATED COST OF RECOMMENDATION**PHASE I: Grid preparation, geophysical surveys, geochemical sampling**

Grid preparation	20 kilometres @ \$200 (all incl.)	\$ 4,000
Labour		
Geologist	30 man-days @ \$300	9,000
Soil sampler, mag. operator	90 man-days @ \$175	15,750
Sampling, blasting crew and equipment		5,000
Bulldozer	50 hours @ \$125/hour	6,250
Room and board	120 man-days @ \$50	6,000
Material and supplies equipment rental		4,000
Travel, sample shipment		4,000
I.P. Survey	20 km @ \$1,200 (all incl.)	24,000
Geochemical analyses	600 @ \$14, 200 @ \$20	12,400
Engineering, supervision, consulting, report		<u>10,000</u>
	Subtotal	\$104,000
	Contingencies	<u>6,000</u>
	TOTAL PHASE 1	\$110,000

PHASE II: Follow-up diamond drilling, trenching

Diamond Drilling	1000 metres @ \$160/m (all incl.)	\$160,000
Bulldozer, trenching and Drillsite construction	100 hours @ \$125/hr	12,500
Supervision, engineering, consulting, report		<u>20,000</u>
	Subtotal	\$192,250
	Contingencies	<u>17,500</u>
	TOTAL PHASE II	\$210,000

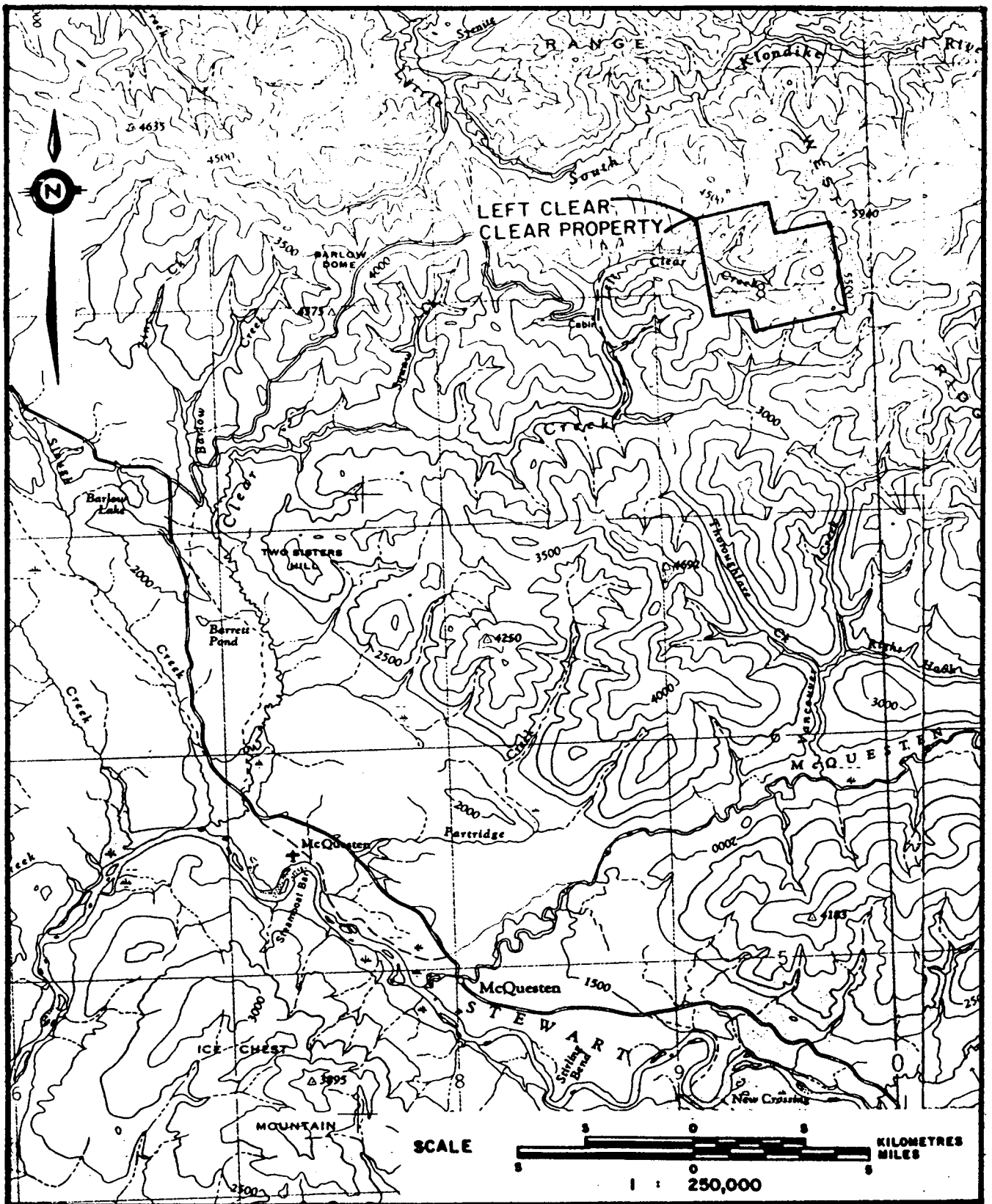
INTRODUCTION

Secret Pass Minerals Corporation holds an option on the WIND, RAIN and SLEET claims in central Yukon. The property was acquired by Secret Pass Minerals on the recommendation of Mr. J. C. Stephen, consulting geologist. Mr. Stephen was advised in 1986 by one of the owners that massive pyritic mineralization grading up to 100 ounces per ton was found in float. Subsequently, in 1987, Mr. Nelson Harper, a placer operator on Left Clear Creek, and one of the property owners, encountered heavy sulphide mineralization in bedrock at the bottom of placer workings in the creek. An examination by Mr. Stephen and the writer revealed two occurrences of apparently stratabound pyrite in quartz-rich schist and phyllite. Samples were collected and significant gold values were obtained. The claims also cover gold-bearing quartz vein stock-works in a quartz monzonite stock. The latter is documented as the Rhosgobel prospect and was formerly held by Canada Tungsten.

The purpose of this report is to summarize work carried out by Canada Tungsten in 1981 and results of recent work funded by Secret Pass Minerals Corporation.

LOCATION, ACCESS, PHYSIOGRAPHY

The Left Clear Creek property is situated 70 kilometres northwest of Mayo and 110 kilometres east of Dawson (Figure 1). The property lies in the Southern Ogilvie Mountains at the head of Left Clear Creek (Figure 2). Left Clear Creek is a tributary of Clear Creek which in turn flows into the Stewart River. Access is by way of the Whitehorse-Dawson highway. At Barlow Lake an access road to Clear Creek turns off the highway as a secondary road for 35.4 kilometres where it reaches Clear Creek. The road climbs up to the top of the ridge in the first few kilometres and follows the height of land. The descent to Clear Creek is moderately steep with several switchbacks and at Clear Creek the Left Clear Creek road branches to the north, fords the creek



SECRET PASS MINERALS CORPORATION

N.T.S. 115 P

ACCESS MAP

LEFT CLEAR CREEK PROPERTY

Dawson Mining Division - Yukon

and follows natural gravel bars and piled placer tailings 8.05 kilometres.

The claim area is moderately steep, although hills are moderately rounded, except along the ridges at the head of Left Clear Creek which are locally rugged. The placer workings are at an elevation of about 900 metres and peaks are up to 1500 metres.



SECRET PASS MINERALS CORPORATION

N.T.S. 115 P/14

CLAIM MAP

LEFT CLEAR CREEK PROPERTY



Figure 3

CLAIM DATA

The Left Clear Creek property is comprised of 150 claims (see Figure 3) as follows:

<u>CLAIM NAME</u>	<u>RECORD NO.</u>	<u>EXPIRY DATE</u>
✓ RAIN 1	YA 31503	September 5, 1988
✓ RAIN 2	YA 31510	September 5, 1988
✓ RAIN 3	YA 31504	September 5, 1988
✓ RAIN 4	YA 31511	September 5, 1988
✓ RAIN 5	YA 31505	September 5, 1988
✓ RAIN 6	YA 31512	September 5, 1988
✓ RAIN 7	YA 31506	September 5, 1988
✓ RAIN 8	YA 31513	September 5, 1988
✓ RAIN 9	YA 31507	September 5, 1988
✓ RAIN 10	YA 31514	September 5, 1988
✓ RAIN 11	YA 31508	September 5, 1988
✓ RAIN 12	YA 31515	September 5, 1988
✓ RAIN 13	YA 31509	September 5, 1988
✓ RAIN 14	YA 31516	September 5, 1988
✓ RAIN 15	YA 31517	September 5, 1988
✓ RAIN 16	YA 31525	September 5, 1988
✓ RAIN 25	YA 31522	September 5, 1988
✓ RAIN 26	YA 31530	September 5, 1988
✓ RAIN 27	YA 31523	September 5, 1988
✓ RAIN 28	YA 31531	September 5, 1988
WIND 2	YA 31855	October 24, 1988
WIND 4	YA 31857	October 24, 1988
WIND 6	YA 31859	October 24, 1988
WIND 8	YA 31861	October 24, 1988
WIND 10	YA 31863	October 24, 1988
SLEET 7-24	YB 04262-04279	October 24, 1988
SLEET 33-59	YB 04280-04306	October 7, 1988
SLEET 61	YB 04307	October 7, 1988
SLEET 63-68	YB 04308-04313	October 7, 1988
SLEET 69-84	YB 04414-04429	October 16, 1988
SLEET 87-110	YB 04430-04453	October 16, 1988
SLEET 111-144	YB 04314-04347	October 7, 1988

The WIND, RAIN and SLEET 69-84, 87-110 are registered in the name of Nelson Harper and the SLEET 7-24, 33-59, 61, 63-68 and 111-144 are registered in the name of Blackstone Placer Mining Corp. Ltd. Secret Pass Minerals Corporation holds an option to earn an interest in the above claims.

HISTORY

Earliest mining and exploration activity in the McQuesten River area dates back to the early 1900's shortly after the Klondike gold rush. Placer gold discoveries were made and mining still takes place on Hight, Johnson, Duncan, Haggert and Clear Creeks.

The silver-lead-zinc deposits of the Keno Hill-Galena Hill district 90 kilometres to the east and lode gold deposits at Dublin Gulch were also found in the early 1900's.

Lode tin and tungsten deposits have been discovered more recently in the area and intensive exploration was carried out in 1978 to 1982 by CCH Resources, Inco, Billiton, Cominco, and Canada Tungsten. In 1980 to 1981, Canada Tungsten Mining Corporation acquired large blocks of claims in the Dublin Gulch and Clear Creek areas. At Dublin Gulch a significant skarn-type tungsten deposit (6,000,000 tons grading 0.8% WO_3 , Lennan, 1984) was outlined by drilling, and placer operations were undertaken in conjunction with Queenstake Resources Ltd. On Clear Creek, Queenstake reactivated a dredge and has conducted placer mining up to 1987. On and around Left Clear Creek, Canada Tungsten did extensive mapping and geochemical surveys on 1,054 claims (West Ridge Property). Some sampling and trenching was undertaken on tungsten bearing skarns but no follow-up work was carried out on gold geochemical anomalies. The claims were subsequently abandoned and over 100 claims optioned from Scottie Thom and Nelson Harper were returned. The original claim group has gradually been reduced to the presently existing 24 RAIN claims which cover parts of the known mineral showings and geochemical anomalies.

The stratabound pyritic gold bearing mineralization found as float in 1986 and as bedrock showings in the placer channel in 1987 is a totally new discovery. The WIND claims were staked to cover this discovery. Recently the SLEET claims were staked to cover the entire area of potential interest.

GEOLOGY

Regional Geology

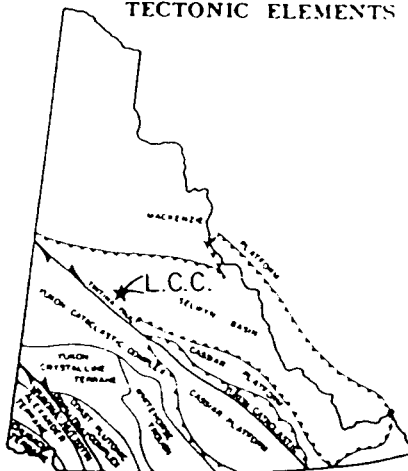
The Left Clear Creek property is in the McQuesten Map-Area of Bostock (1964). Regionally, the property lies in the Selwyn Basin, a broad, deep restricted sedimentary basin in the western part of the northern Cordilleran miogeocline. This basin was filled with shale, chert and limestone during Early Cambrian to Devonian time (see Gordey et al, 1981) and subsequently folded and uplifted in early Cretaceous time. The rocks underlying the claim area probably represent the floor of the Selwyn Basin. They consist of shale, sandstone, grit of Late Proterozoic to Early Cambrian (Windermere) age called the "Grit Unit".

As summarized by Emond (1987), the McQuesten area is in the north-western Selwyn Basin and is underlain mainly by Upper Precambrian to Lower Cambrian metasedimentary rocks of the "Grit Unit" (Figure 4). To the north, these rocks are thrust on to by Ordovician to Devonian Road River Formation sedimentary rocks. Numerous small, high level, acid intrusions and some coeval volcanic rocks, in the southeast part of the area are Cretaceous (83-103 Ma).

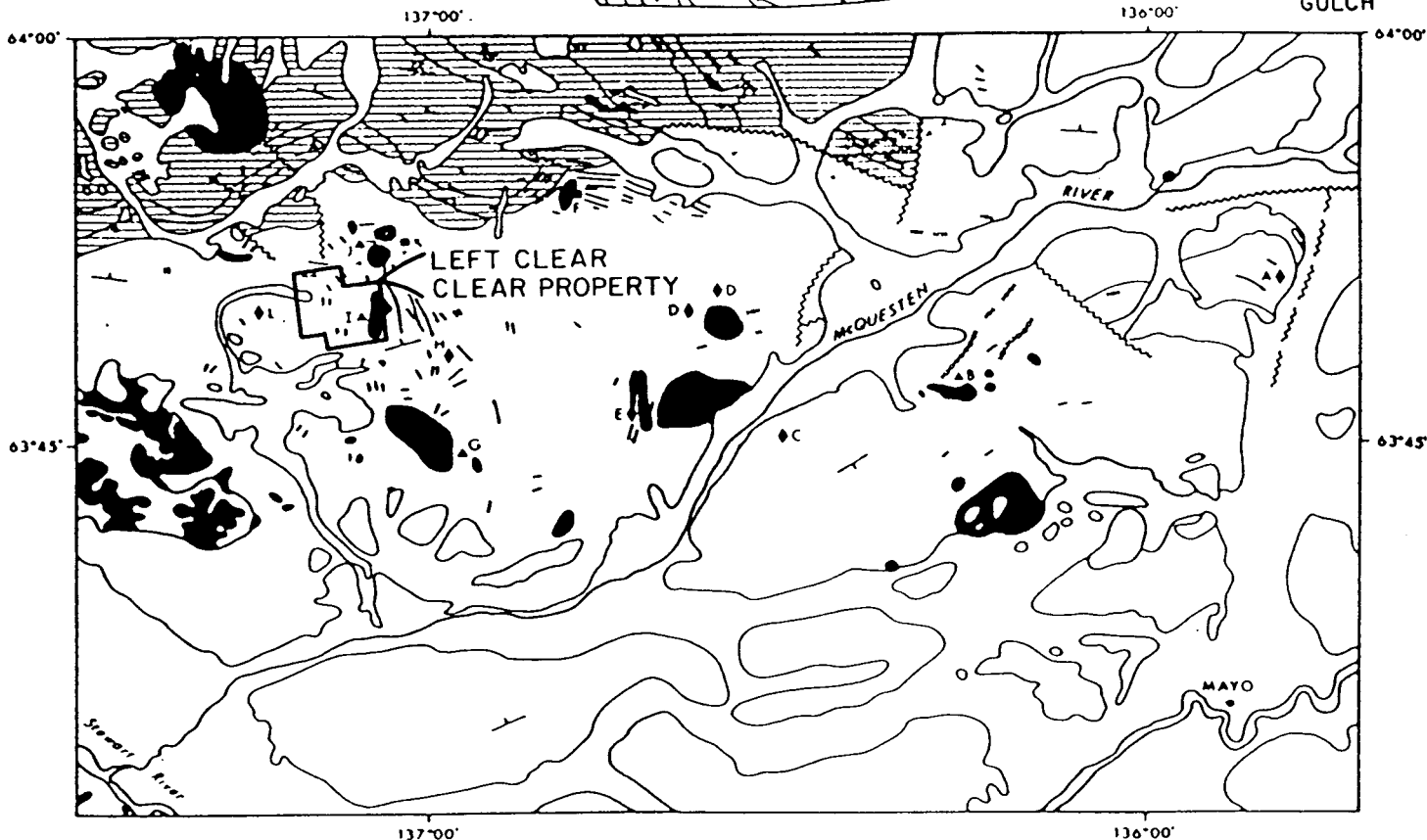
The "Grit Unit" is a homogeneous, thick, blocky grey-weathering unit consisting of highly deformed, greenschist facies metamorphosed quartzite, quartz-mica schist, and phyllite with minor intercalated limestone, dolomite and amphibolite. A large northeast trending anticline, "the McQuesten Anticline" (Mulligan, 1974), traverses through the area, just north of the McQuesten River. Foliation dips shallowly northwest to the north and shallowly southeast to the south of the anticline.

Cretaceous intrusions vary from syenite in the north to granite and quartz monzonite in the south and centre of the McQuesten area. Most are stocks, plugs and dykes; the latter are locally sheeted. These intrusive rocks are grey to orange-weathering and predominantly feldspar-quartz porphyries. Feldspar phenocrysts are up to 10 centimetres in length, but more commonly 0.5 to 2 cm. Biotite is the

YUKON
TECTONIC ELEMENTS

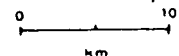


▲ DUBLIN
GULCH



Geology and Mineral Occurrence Map of the McQuesten River Area.

SCALE 1:500,000



LEGEND

- Quaternary sediments
- Cretaceous felsic volcanic rocks
- Cretaceous felsic intrusive rocks
- Jurassic/Cretaceous gabbro
- Ordovician metasedimentary rocks
- Late Proterozoic/Early Cambrian metasedimentary rocks
- Late Proterozoic/Early Cambrian marble

- foliation
- fault

- mineral occurrence - tin
- mineral occurrence - tungsten
- mineral occurrence - gold - silver

Mineral Occurrences

- | | |
|--------------------|----------------|
| A - Joubira | G - Lugdush |
| B - Scheelite Dome | H - Jabberwock |
| C - Oliver Creek | I - Rhosgobel |
| D - Sunshine Creek | J - Pukelman |
| E - Boulder Creek | K - Josephine |
| F - Mahtin | L - Barney |

Figure 4

dominant mafic mineral, and commonly makes up 5 to 10% of the rock. Hornblende occurs with biotite in the syenite. Creamy weathering aplite dykes are found in contact zones of many stocks and plugs. These intrusions lie in a belt which, in the Yukon, host a number of world class tungsten deposits (Sinclair, 1984) including Cantung (39,000 tonnes of WO_3 past production) and MacTung (reserves of 300,000 tonnes contained WO_3).

Vertically columnar-jointed, grey-weathering, porphyritic hornblende rhyolite flows located just southeast of Mayo Lake, likely represent a down-faulted remnant of flows coeval with the Cretaceous intrusions.

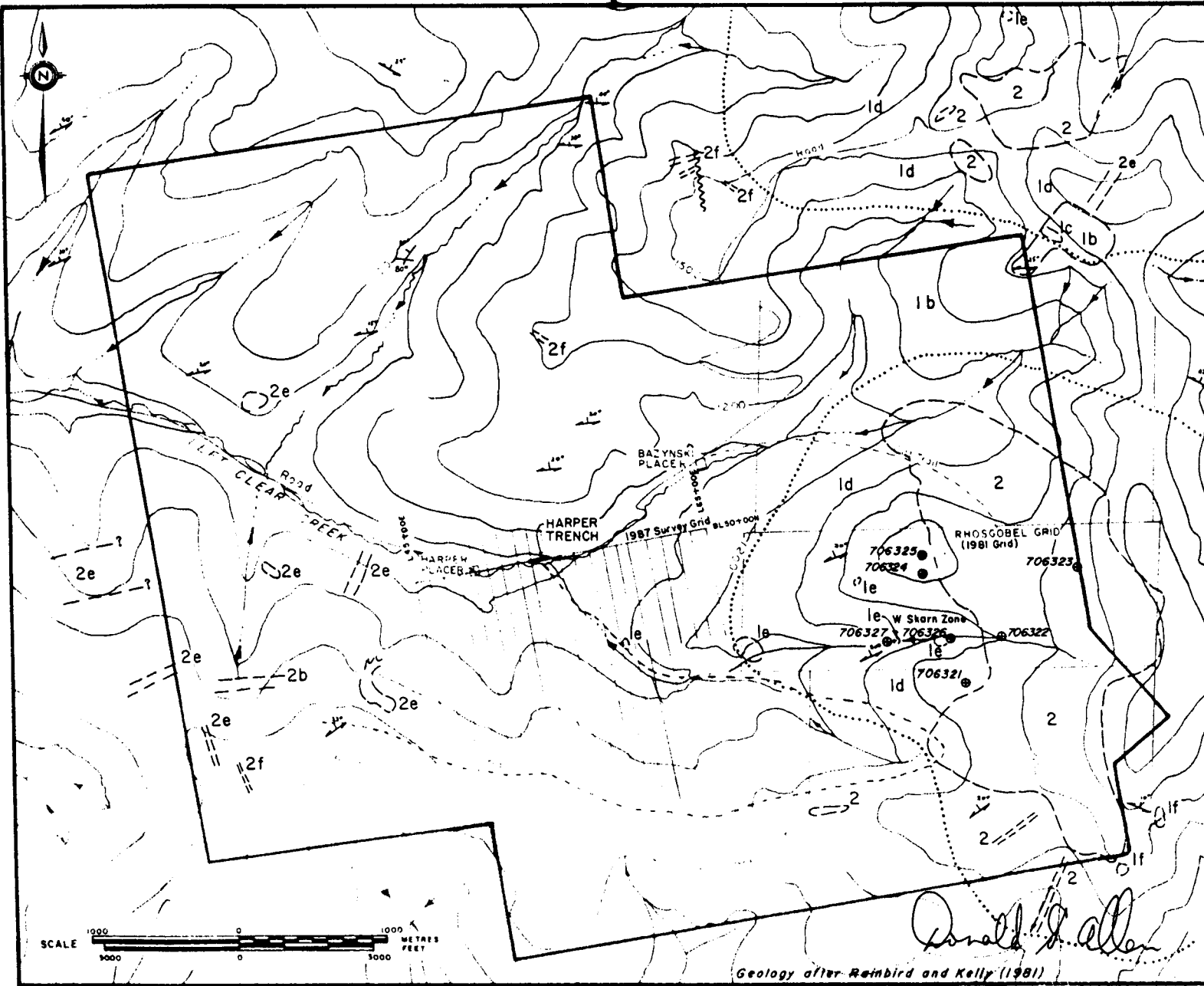
Surficial Geology of the Clear Creek Area

The Clear Creek drainage basin according to Morrison (1982, 1983) is beyond the limits of both the Reid and McConnell advances of the Cordilleran ice sheet. Glacial erratics are found on slopes up to an elevation of 945 metres. Surfaces above that are unglaciated except where independent montane glaciers existed locally. At upper elevations, felsenmeer (frost heaved rubble and rubbly outcrop) predominate.

Creek and gulch placer deposits in the Clear Creek basin developed in a brecciated stream environment as a result of downcutting and gravelly sedimentation after a pre-Reid glacial advance. Placer operations are currently underway in the Left Clear Creek basin. Source of the gold may in part be the gold-bearing quartz veins as described below.

Property Geology

The geology of the claim area has been described in detail by Rainbird and Kelly (1981). Figure 5 summarizes the geology of the immediate claim area. The main rock types in the area are quartzites, quartz mica schist and micaceous phyllite with local limy units of the Late Proterozoic "Grit Unit"; and stocks, plugs and dykes of quartz



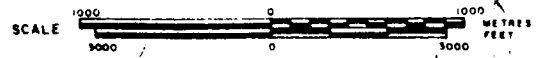
LEGEND

- CRETACEOUS**
- INTRUSIVE ROCKS**
 2 Porphyritic quartz monzonite
 2a Aplite; 2b granodiorite; 2c Quartz diorite; 2e Rhyolite; 2f Lamprophyre.
- LATE PRECAMBRIAN OR EARLY CAMBRIAN**
- UPPER SCHIST/GRIT UNIT**
 1 Ja Quartzite; 1b Micaceous quartzite; 1c Phyllite; 1d Hornfelsic equivalents; 1e Skarn; 1f Breccia.

SYMBOLS

- Geological contact.
- Extent of contact metamorphism.
- Fault.
- Bedding.
- Foliation.
- Rock sample site, Sample number.
- Creek.
- Claim boundary.
- Survey grid.
- Topographical contour, Contour interval 100 meters.

SECRET PASS MINERALS CORPORATION
 LEFT CLEAR CREEK PROPERTY
 DAWSON MINING DIVISION — YUKON
GEOLOGICAL MAP



Donald J. Allen

Geology after Reinbird and Kelly (1981)

Nov, 1987

A.M. exploration Ltd

N.T.S. 1:50,000

monzonite, and lesser amounts of rhyolite, aplite, granodiorite-quartz diorite, and lamprophyre.

Rocks of the Grit Unit have been broken down in a series of sub-units by Rainbird and Kelly. Sub-units 1a and 1b are massive gritty and thin bedded quartzites and micaceous quartzites. Unit 1c comprises phyllites of variable compositions, (muscovite-sericite, chlorite, local graphite). All types weather to dark grey in colour and are stained with limonite, presumably due to the breakdown of iron-rich micas and sulphides. The most abundant rock type is muscovite-phyllite which is commonly interlayered with micaceous quartzite. Masses and lenses of white bull quartz are common. Accessory minerals recognized in these rocks include plagioclase, actinolite, epidote, apatite, zircon and tourmaline. Sub-unit 1d is a contact metamorphic equivalent of units 1a to 1c and is directly related to the stocks of quartz monzonite. The phyllites and quartzites for distances of up to 700 metres have been converted to biotite-quartzite schist and hornfels. Unit 1e is a calc-silicate skarn or hornfels which apparently developed in limy units on the west side of the stock.

Intrusive into metasedimentary rocks of the Grit Unit on the eastern part of the claim group is a stock of porphyritic quartz monzonite (Rhosgobel Stock of Rainbird and Kelly), the largest of about six stocks in the immediate area. The rock is a coarse grained biotite quartz monzonite containing up to 50% orthoclase phenocrysts in an equigranular groundmass of plagioclase (20 to 25%), quartz (15%), orthoclase and biotite (5%). Small stocks of quartz diorite-granodiorite, sill-like bodies of quartz porphyry and dykes of aplite and lamprophyre also occur in and around the claim area.

Structure

The metasedimentary rocks in the claim area generally strike east-west and dip gently to moderately to the north. Minor folding is common. Rainbird and Kelly have recognized four phases of deformation and suggest that large scale nappe structures may be present.

Except for the presences of topographic lineaments which may be an expression of fault structures, no major faulting had been recognized in the claim area until recently. A strong fault with 15 to 60 centimetres of white, plastic fault gouge is exposed in the bed of the placer trench in Left Clear Creek (Figure 6). This fault strikes north 70° east and dips 70° to the north. Branch faults on possibly intersecting faults appear in the north wall of the trench and dip to to 63° to the north.

MINERALIZATION

Four types of mineralization occur in the claim area. (1) tungsten bearing calc-silicate skarns; (2) tungsten and gold bearing quartz vein stockworks; (3) possible tin bearing breccias and (4) stratabound gold bearing pyrite-rich beds. Types 1 to 3 are closely related in origin to the Late Cretaceous intrusive rocks.

Tungsten-bearing skarns

Tungsten bearing calc-silicate skarns were the main target of exploration by Canada Tungsten. They were not observed in detail by the writer but are reported to occur over a stratigraphic thickness of 4.5 metres and along a strike length of about 800 metres west of the stock contact. Individual skarn beds vary from 1 centimetre up to 2 metres. Two types have been observed, a wollastonite-plagioclase-quartz assemblage and a diopside-plagioclase-quartz assemblage. Scheelite occurs in the latter assemblage and tungsten values ranging from 0.01 to 1.31% WO_3 are reported by Rainbird and Kelly.

Gold and Tungsten-bearing quartz vein stockworks

Quartz vein stockworks are reported to occur in the central part of Rhosobel stock as well as two other stocks in the area. Vein intensity varies from spacing of 10 centimetres to 5 metres and averages 0.5 metres. Vein widths vary from hairline to 5 or 6 centimetres and average 1 centimetre. The veins carry scheelite and arsenopyrite

although not commonly together. Rare galena and stibnite have also been identified with arsenopyrite. Mapping and soil geochemical sampling by Rainbird and Kelly on the Rhosgobel grid indicates a stockwork zone about 800 metres long and 200 to 400 metres wide.

Several samples of vein material from the Rhosgobel grid (although actual sample locations are not well documented) were assayed by Rainbird and Kelly and the following values reported:

30601	1.313 oz/ton gold	1.33 oz/ton silver
30605	0.112 oz/ton gold	
90955	0.880 oz/ton gold	

Early winter snow prevented the writer from observing and sampling the reported stockwork mineralization; however, samples of apparently barren quartz float and quartz veined quartz monzonite in felsensmeer yielded anomalous gold values of 330 and 140 parts per billion (samples 706322, 706323) along with weakly anomalous tungsten values (16 parts per million). Elsewhere in the Rhosgobel grid area, anomalous amounts of tungsten up to 173 parts per million (Sample 706321), and arsenic up to 51 parts per million (Samples 706321 and 706327) were obtained in samples of quartz veined hornfels and schist.

Tin-bearing Greisen-Breccia

Anomalous tin values, obtained by Rainbird and Kelly in the area drained by Left Clear Creek indicate the possible presence of tin mineralization in the area. A greisen-breccia was found on the Barney Creek area about seven kilometres west of the Rhosgobel grid and microscopic crystals of cassiterite were identified; however, it was concluded that this was not the source of the tin found in the stream sediments and that other sources might be present.

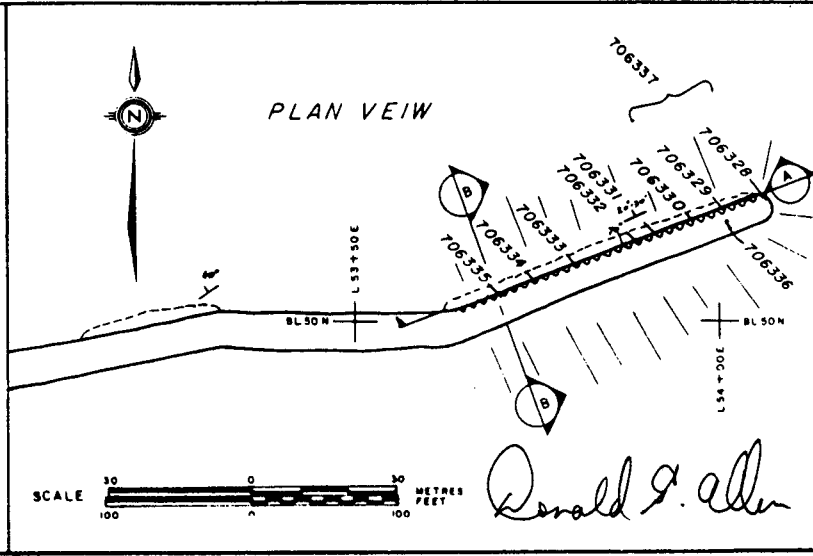
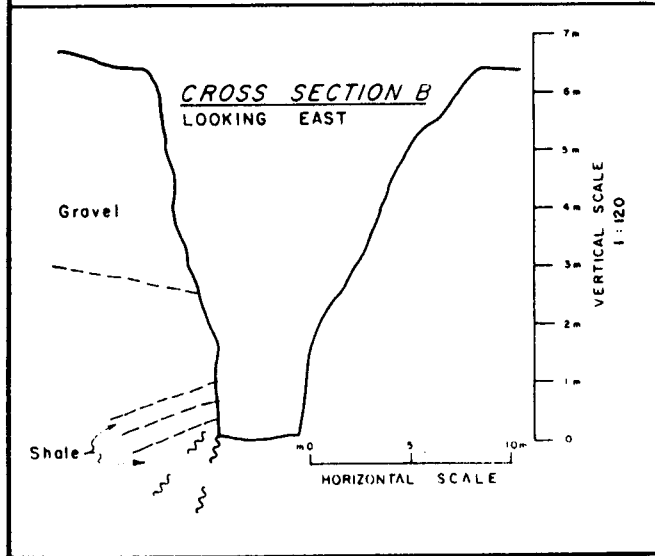
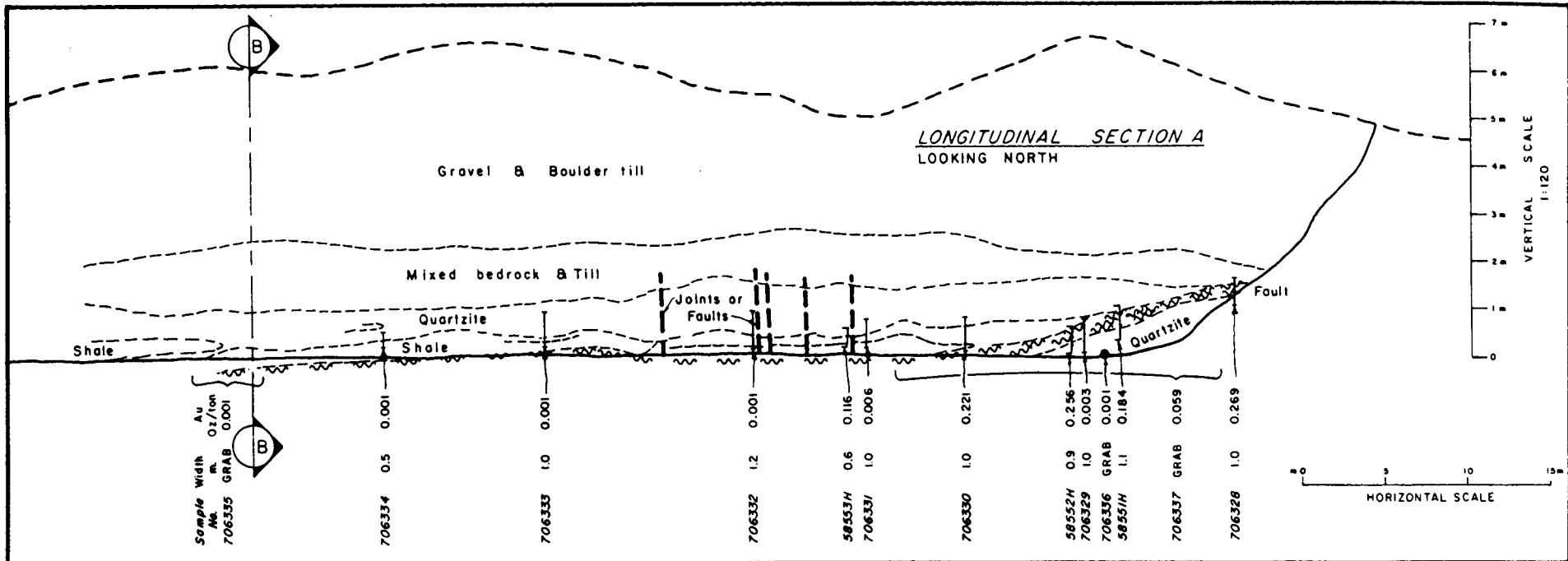
Stratabound gold-bearing sulphides

The gold bearing sulphides discovered in the placer trench of N. Harper represents a new discovery of a previously unknown type of mineralization in the area. The first discovery made in 1986 was of

massive sulphide float which was found on the hillside south of the placer operation. Grades in excess of 100 ounces per ton were reported by the prospectors. The mineralization subsequently discovered in the placer trench is characterized by several narrow beds of near massive pyrite over a width of about one metre. The beds consist of 50 to 80% pyrite as disseminations and clusters of fine (0.1-2m) pyrite cubes in a groundmass of a grey fine grained quartz which is interlayered with a sericite-biotite phyllite. The sericite has the appearance of being secondary or hydrothermal in origin but it is not clear whether or not it is a result of alteration that occurred along the fault that cuts the zone. The mineralized bed dips at about 20° to the north so its southward projection would bring it out on the hillside to the south somewhere in the vicinity of the reported high grade float. A total of 12 samples were collected in and along the trench, three by J. C. Stephen in July, 1987 and nine by the writer. Sample sites are plotted on Figure 6 along with gold values. Analytical results are presented in Appendix I, and on Table 1. Gold values appear to be directly related to the presence of layered pyrite, i.e., no gold appears to be associated with the disseminated pyrite noted in some samples. Gold values range from 0.006 to 0.269 ounces per ton in channel samples of 0.6 to 1.2 metres across the pyritic beds. Significant arsenic values (up to 2%) occur with the higher gold values. In addition, variably and locally highly anomalous values of silver (up to 4.3 ppm), lead (up to 591 parts per million), zinc (up to 2413 parts per million), cadmium (one value of 26 parts per million) and antimony (up to 280 parts per million) were obtained.

The sampling and analyses described here were carried out in such a way as to ensure that the samples from the Harper Trench did not contain any appreciable amounts of placer gold which might have accumulated in fractures in the bedrock. Evidences that little, if any, placer gold is in the samples are as follows:

- (1) of those samples containing significant gold values, gold is present



SECRET PASS MINERALS CORPORATION
LEFT CLEAR CREEK PROPERTY
DAWSON MINING DIVISION — YUKON

**GEOLOGY AND SAMPLE SITES
HARPER TRENCH**

A.M. exploration Ltd
Nov, 1987 N.T.S. 115P/14

FIGURE 6

in all size fractions (see Appendix I) and was looked for but not observed in the sieving screens at the assay laboratory;

- (2) gold values were obtained only on those samples that contained bedded sulphides;
- (3) arsenic, lead, zinc, silver, and antimony are relatively high - if any placer accumulation might have occurred, tungsten values would also be expected to be high as scheelite (calcium tungsten) is often found in placer deposits.

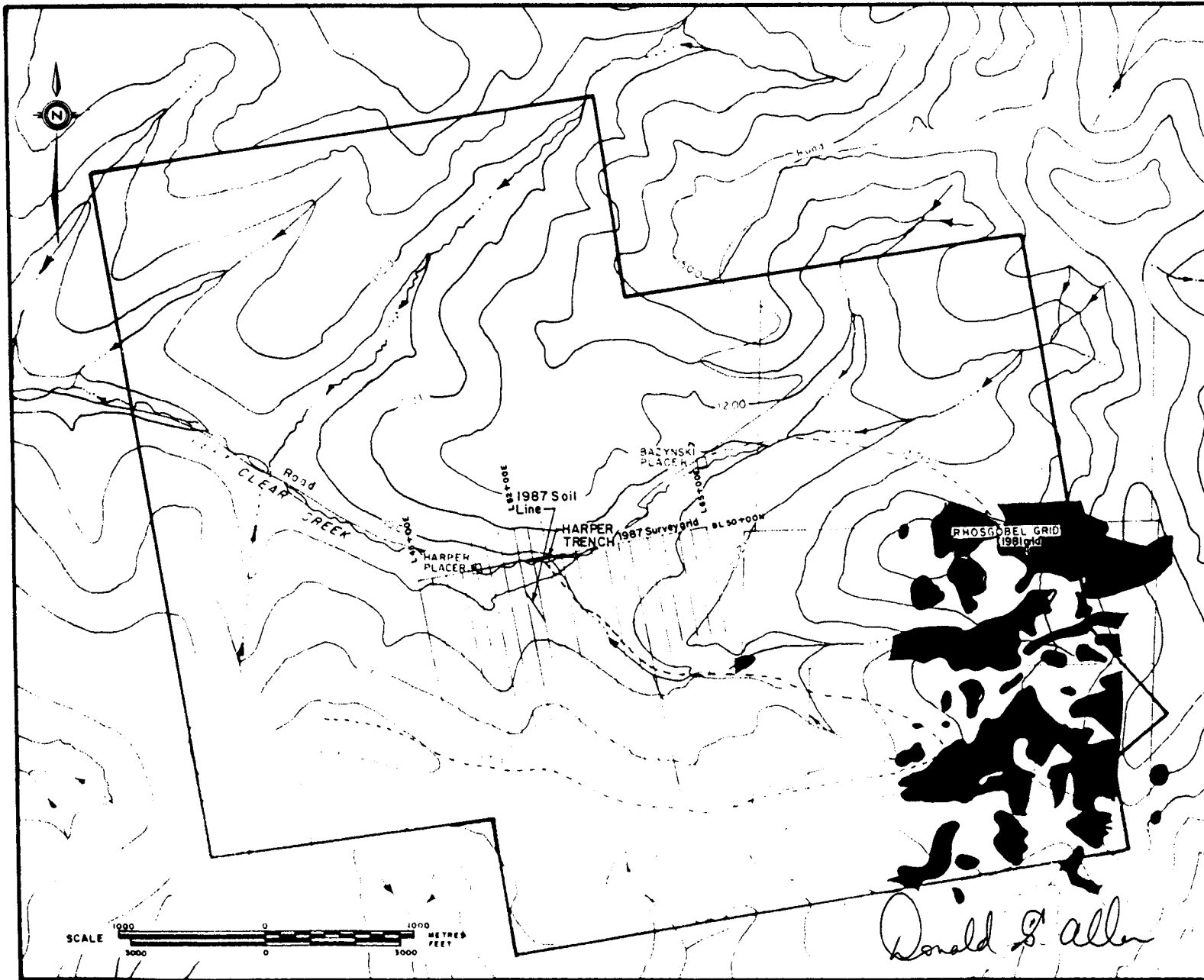
SOIL GEOCHEMICAL SURVEYS

Soil geochemical surveys were conducted by Canada Tungsten in 1981 over an area of 4.0 by 2.8 kilometres on the Rhosgobel grid shown on Figure 1. B horizon soil samples were analyzed by atomic absorption methods for tin, tungsten and gold. Results have been summarized on Figures 7a and 7b. As described by Rainbird and Kelly:

"Samples from the southern section were analysed primarily for tin and tungsten, samples from the central section were analysed for tungsten, gold and some tin. The northern section was not analysed, with the exception of one line which was analysed for gold and tungsten.

Results from the central section indicate a strong northeast-southwest trending tungsten-gold anomaly. The coincidental nature of this high would suggest that tungsten and gold are genetically related, perhaps as scheelite and auriferous arsenopyrite in a quartz vein stockwork. The anomalous zone is about 1,000 metres long by 400 metres wide and occurs over porphyritic quartz monzonite (Unit 2c). The gold anomaly extends further to the northeast in soils overlying hornfelsic rocks (Units 1d and 1d₃). This fact would confirm our assumption that gold mineralization is generally peripheral to tungsten and that hard rock showings of auriferous arsenopyrite are typically in the hornfels zone. Rock exposure is poor, especially over the intrusive which tends to be recessive relative to the more siliceous hornfelsic rocks. Trenching will be necessary in these areas, to outline the vein density and grade of the stockwork system. The water-saturated soils and permafrost will hinder such work.

Within the southern section of the Rhosgobel Grid a tungsten soil anomaly trends roughly east-west appearing to coincide with the southern contact of the Rhosgobel Stock. Tungsten values ranging from 40 parts per million up to 560 parts per million may be related to contact metasomatism and minor skarn development. Some siliceous light green skarn float was recognized in mapping of the southeastern portion of the Rhosgobel Grid. A heavy mineral concentrate anomaly of 650 ppm from a creek draining the southeastern portion of the grid prompted preferred analysis of tin rather than gold. Tin soil values do not exceed 2 ppm and therefore are considered insignificant. The source of the tin



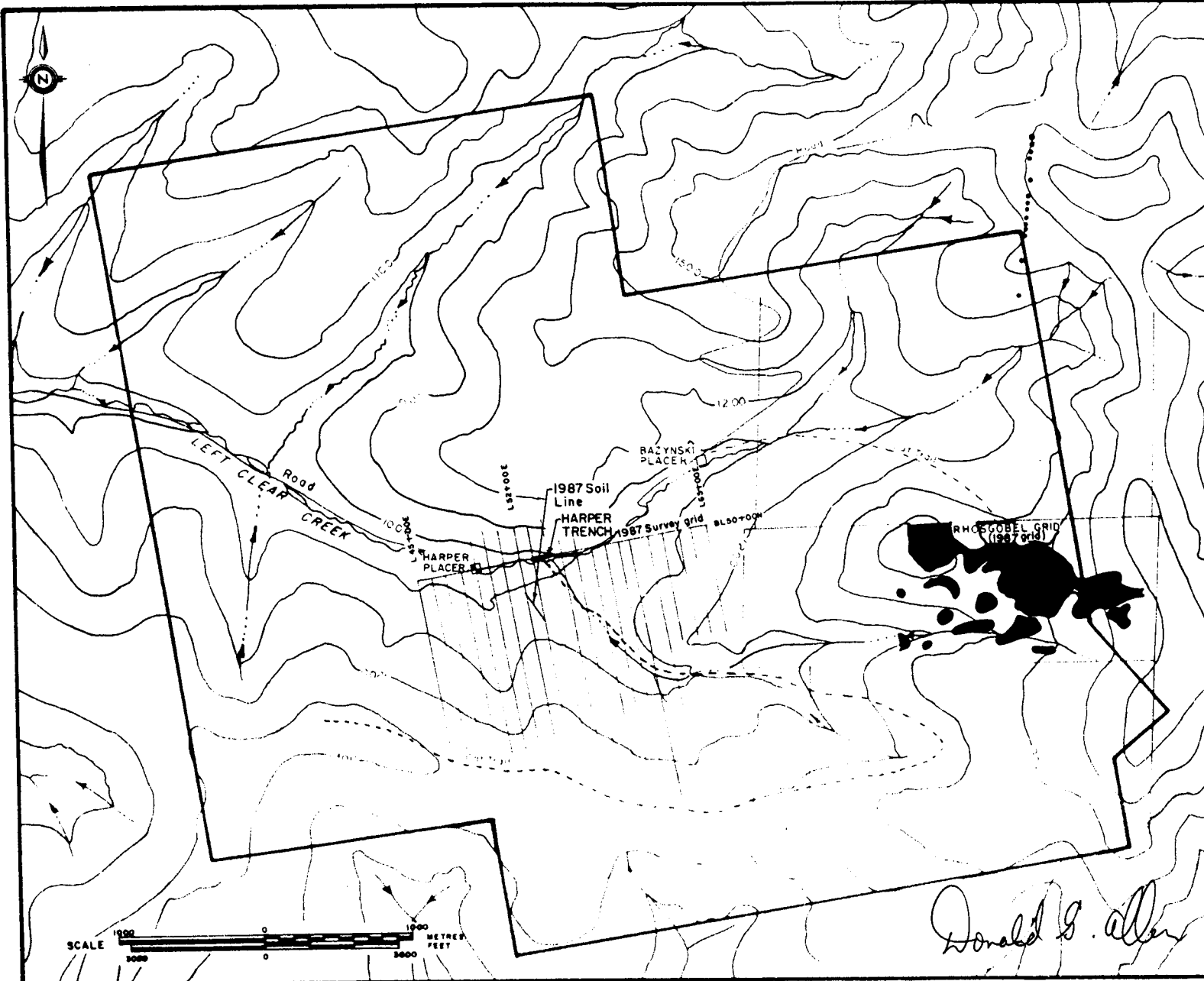
LEGEND

- Boundary of geochemical anomaly W = 20 ppm.
- Creek.
- Claim boundary.
- Survey grid.
- Topographical contour, Contour interval 100 meters.

SECRET PASS MINERALS CORPORATION
 LEFT CLEAR CREEK PROPERTY
 DAWSON MINING DIVISION — YUKON
**GEOCHEMICAL SUMMARY MAP
 TUNGSTEN**

Donald S. Allen

exploration ltd
 Nov. 1987 N.T.S. 115P/14



LEGEND

- Isolated gold geochemical anomalies Au ≥ 25 ppb.
- Boundary of geochemical anomaly Au ≥ 25 ppb.
- Creek.
- Claim boundary.
- Survey grid.
- Topographical contour, Contour interval 100 meters.

SECRET PASS MINERALS CORPORATION
 LEFT CLEAR CREEK PROPERTY
 DAWSON MINING DIVISION — YUKON
GEOCHEMICAL SUMMARY MAP
 GOLD

Donald G. Allen

AM exploration Ltd

Nov, 1987

N.T.S. 115P/14

FIGURE 7D

anomaly is likely to the south of this grid and will be followed up by contour soil sampling in 1982."

A short line of soil sampling (11 samples) was undertaken by the writer, along a bulldozer trail to the southeast of the Harper trench (Figure 8). Samples were analyzed for gold by Rossbacher Laboratory Ltd. by atomic absorption methods and for a Standard 30 element suite by Acme Analytical Laboratories, by inductively coupled plasma techniques. Samples were B horizon soils taken at a depth of 10 to 30 centimetres. Although gold values are negative, arsenic (pathfinder element for gold) values are weakly enhanced to moderately anomalous (14 to 51 parts per million). Most other elemental results are uniformly low except for the southernmost which returned anomalous values of molybdenum, copper, lead, silver and antimony.

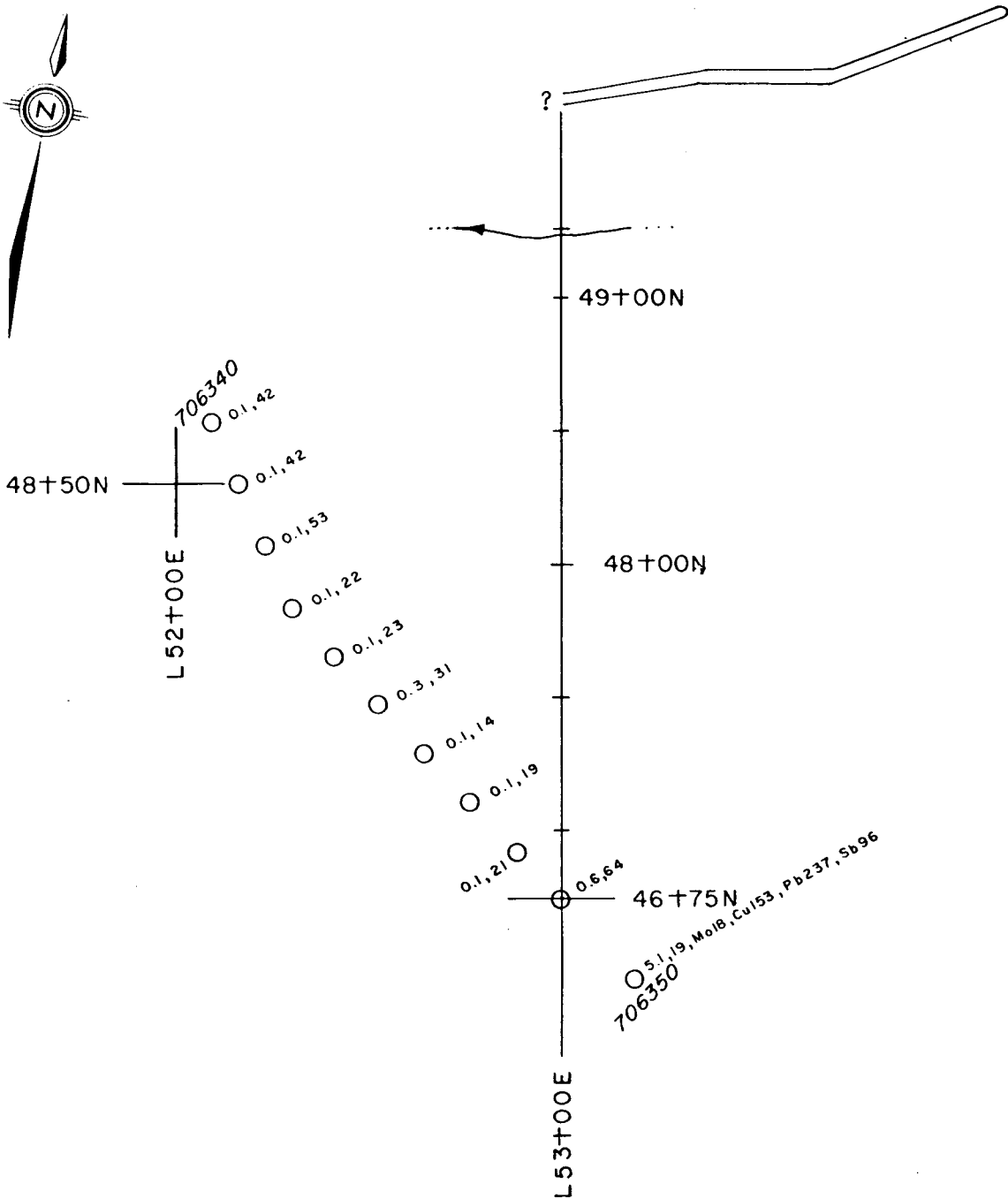
GEOPHYSICAL SURVEYS

In October, 1987 an induced polarization survey was conducted in the grid area by White Geophysical Inc. (Heminsley and White, 1987). Results of the survey are summarized on Figures 9a and 9b, and a copy of the text of the report and copies of the detail areas and profiles are included in Appendix II.

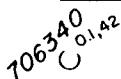



In summary, a zone of low resistivity and high chargeability which is at least 500 metres long and at least 200 metres wide was located indicating the definite presence of abundant sulphides. Part of the anomalous area lies over the stratabound sulphides exposed in the trench. The trend of the anomaly (east-west) also correlates well with the known trend of the sulphides. Heminsley and White recommend expanding the survey to fully define the anomalous area.

A VLF-electromagnetic survey with an EM 16 instrument was also conducted on the grid area. Survey results are uniformly flat and hence results are not presented here.

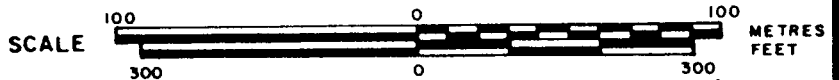
Donald G. Allen



LEGEND

-  Soil sample site, Sample number; ppm Ag, ppm As.
-  Survey grid line.
-  Harper Trench.
-  Creek

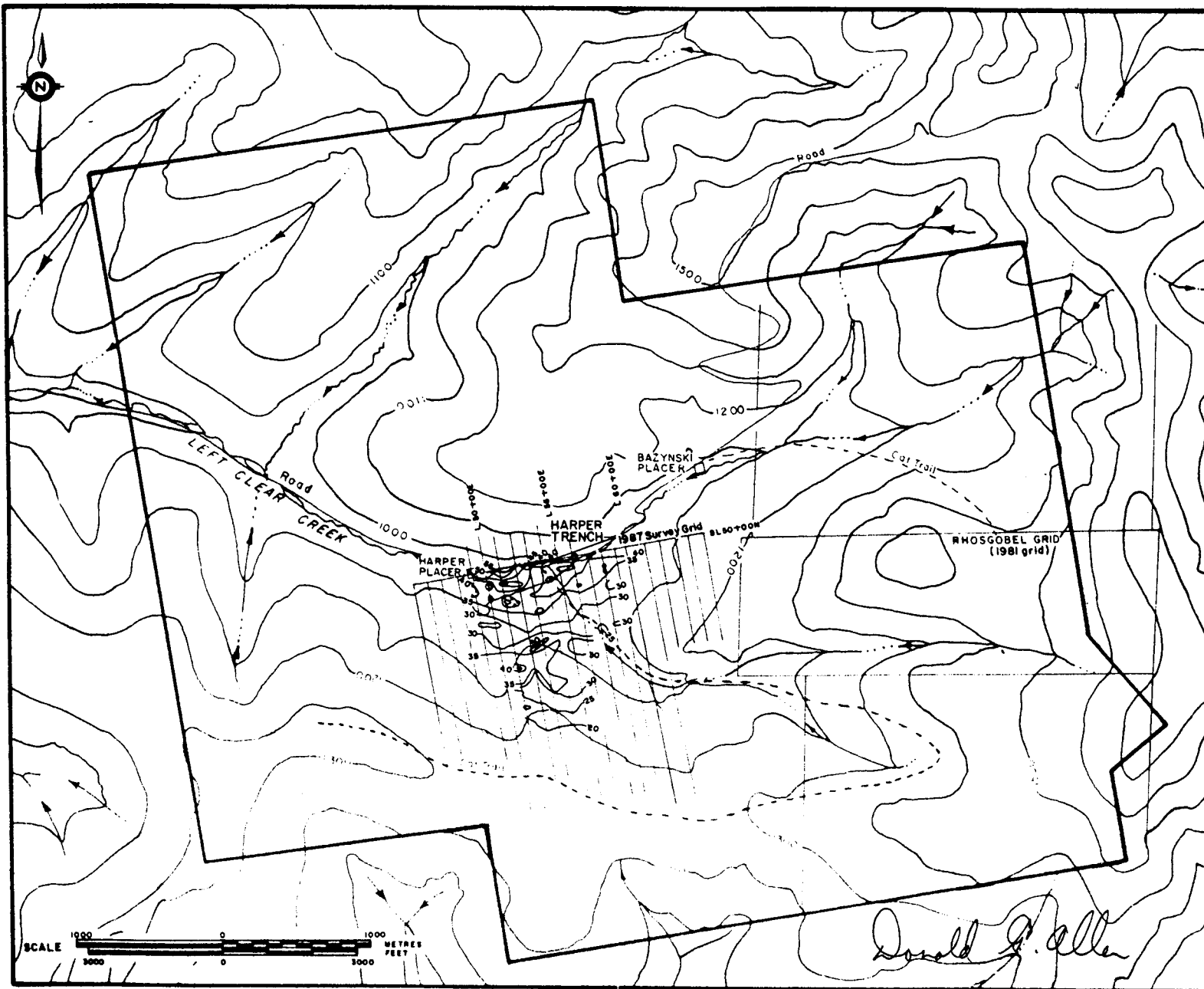
SECRET PASS MINERALS CORPORATION
 LEFT CLEAR CREEK PROPERTY
 DAWSON MINING DIVISION — YUKON
TEST SOIL SAMPLE LINE



NOTE: Other geochemical results plotted where ppm Mo, ppm Cu, ppm Pb, ppm Sb.

Donald J. Allen
 A.M. exploration Ltd.
 Nov, 1987 N.T.S. 115P/14

FIGURE 8



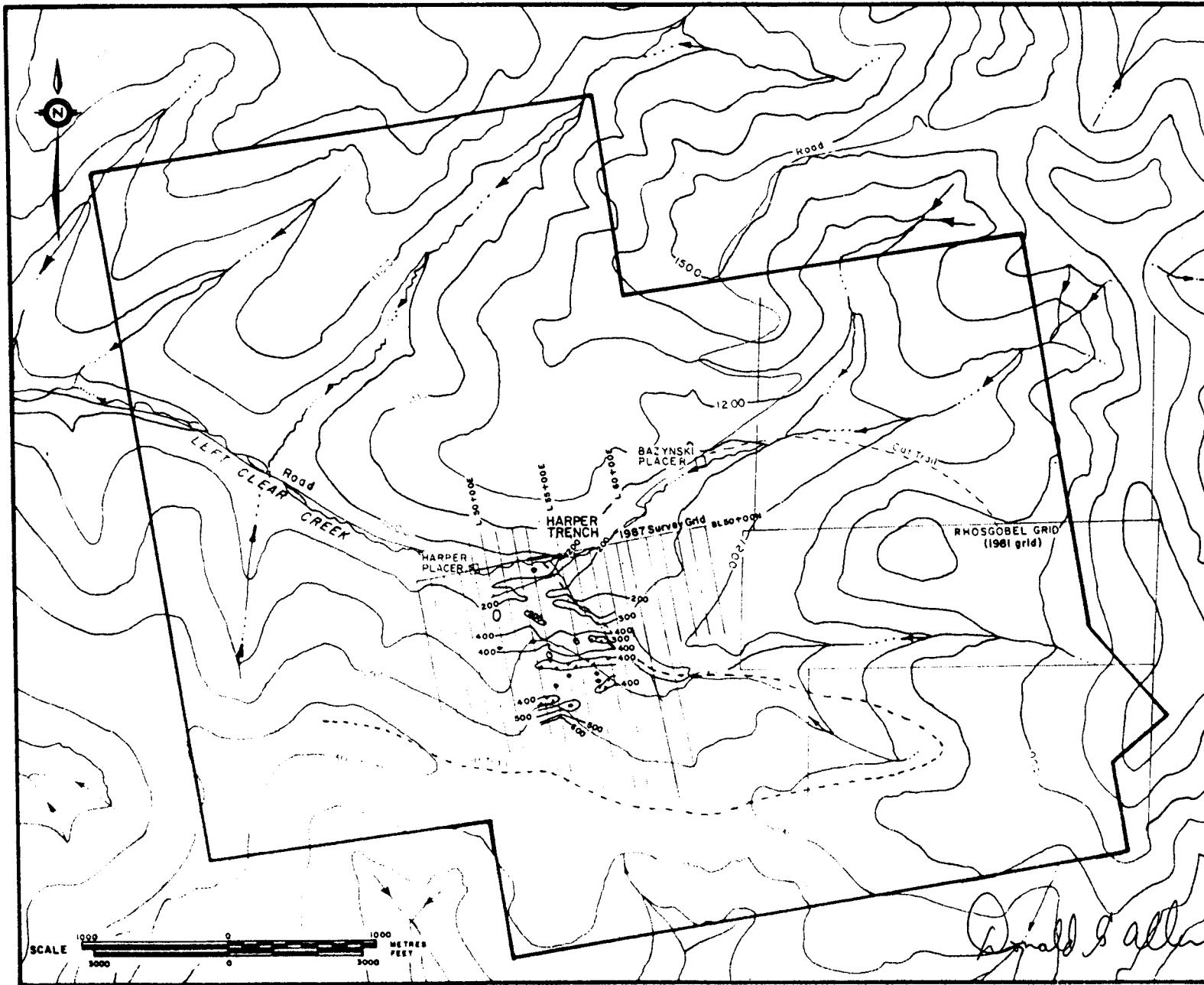
LEGEND

- Percent Frequency contour (Contour interval = 5%)
- IP LOW
- Survey grid line.
- Creek.
- Claim boundary
- Survey grid.
- Topographical contour, Contour interval 100 meters.

SECRET PASS MINERALS CORPORATION
 LEFT CLEAR CREEK PROPERTY
 DAWSON MINING DIVISION—YUKON
 INDUCED POLARIZATION SUMMARY
 MAP
 CHARGEABILITY

Donald J. Allen

FIGURE 9a



LEGEND

- Resistivity contour
(Contour interval
100 ohm meters)
- Resistivity Low.
- Survey grid line.
- Creek.
- Claim boundary.
- Survey grid.
- Topographical contour, Contour
interval 100 meters.

SECRET PASS MINERALS CORPORATION
 LEFT CLEAR CREEK PROPERTY
 DAWSON MINING DIVISION — YUKON
**INDUCED POLARIZATION SUMMARY
 MAP
 APPARENT RESISTIVITY**

Donald Balla

FIGURE 96

LEFT CLEAR CREEK PROPERTY

SAMPLE DESCRIPTIONS

<u>Sample No.</u>	<u>Description</u>	<u>Au ppb</u>
706321	Rubbly biotite quartz schist - some quartz veining parallel to foliation. Rock chips collected over 10 x 10m.	5
706322	Barren quartz float.	322
706323	Coarse grained biotite quartz monzonite with scattered 1-2cm quartz veinlets. Rock chip sample from felsenmeer.	140
706324	Quartz vein float in hornfelsic biotite part of ridge. Rock chip sample.	5
706325	Quartz veined hornfels from highest part of ridge. Rock chip sample.	5
706326	Quartz veined biotite schist, minor disseminated pyrite schist. Rock chip sample.	5
706327	Rusty weathering interlayered quartz and skarny biotite schist. Rock chip sample.	5
706340-350	"B" horizon soil samples.	

The following are 1-metre channel samples (except as noted) north wall of placer trench in Left Clear Creek. Distances are from the end of the easternmost bedrock exposure in trench. All samples are biotite-sericite-phyllite interbedded with metaquartzite and containing lensoid quartz veins parallel to foliation. Samples 706323, 706330, 706337, 58551, 58552 and 58553 contain layered sulfides.

			<u>Au oz/ton</u>
706328	0 m	1.0 m channel sample across shear zone	0.269
706329	9.7 m	1.0 m As above.	0.003
706330	16.0 m	1.0 m As above.	0.221
706331	22.3 m	1.0 m As above.	0.006
706332	8.7 m	1.2 m As above.	0.001
706333	41.3 m	1.0 m As above.	0.001
706334	51.0 m	0.5 m As above.	0.001
706335	58.1 m - 63.0 m	Grab sample of pyritic quartz vein.	0.001

SAMPLE DESCRIPTIONS (Cont'd.)

<u>Sample No.</u>	<u>Description</u>	<u>Au oz/ton</u>
706336	10.0 m Grab sample of pyritic black quartz-rich schist.	0.001
706337	0-20 m Massive pyritic material.	0.059
58551	1.1 m channel sample - altered greenish schist in footwall of fault. Heavy pyrite in narrow zones.	0.184
58552	0.91 m channel sample - as above.	0.256
58553	0.61 m channel sample. Pyritic zone within two shale partings in hanging wall of fault.	0.116

REFERENCES

- Bostock, H. S. (1964). Geology, McQuesten. Geological Survey of Canada Map 1143A.
- Emond, D. S. (1986). Tin and Tungsten Veins and Skarns in the McQuesten River Area, Central Yukon in Yukon Geology, Vol. 1, pp. 113-118.
- Gordey, S. P.; Wood, D.; and Anderson, R. G. (1981). Stratigraphic Framework of Southeastern Selwyn Basin, Nahanni Map Area. Geol. Survey of Canada, Paper 81-A1, pp. 395-398.
- Heminsley, G. and White, G. E. (1987). Geophysical Report on an Induced Polarization Survey on the SLEET Property. Unpublished Report.
- Lennan, W. B. (1984). Ray Gulch Tungsten Skarn Deposit, Dublin Gulch Area in Mineral Deposits of the Northern Cordillera. C.I.M.M. Special Volume 37, pp. 245-254.
- Morrison, S. R. (1983). Placer Deposits of Clear Creek Drainage Basin, 115P, Central Yukon in Yukon Exploration and Geology 1983, pp. 88-93.
- Morrison, S. R. (1982). A Sedimentologic Description of Clear Creek Fluvial Sediments, 115P, Central Yukon in Yukon Exploration and Geology, 1982, pp. 50-54.
- Rainbird, R. H. and Kelly, D. A. (1981). Geological and Geochemical Assessment Report on the C.C. 1-860, Sluggo 1-20, Rain 1-30, and Bee 1-14 Claim Groups. Unpublished Report for Canada Tungsten Mining Corp.
- Stephen, J. C. (1987). Introductory Report on the Rain Claim Group, Left Clear Creek, Yukon. Private Report.
- Sinclair, W. D. (1984). Molybdenum, Tungsten and Tin Deposits and Associated Granitoid Intrusions in the Northern Canadian Cordillera and Adjacent Parts of Alaska in Mineral Deposits of the Northern Cordillera, C.I.M.M. Special Volume 37, pp. 216-233.

CERTIFICATE

I, Donald G. Allen, certify that:

1. I am a Consulting Geological Engineer, at A & M Exploration Ltd., with offices at #704 - 850 West Hastings Street, Vancouver, British Columbia.
2. I am a graduate of the University of British Columbia with degrees in Geological Engineering (B.A.Sc., 1964; M.A.Sc., 1966).
3. I have been practising my profession since 1964 in British Columbia, the Yukon, Alaska and various parts of the Western United States.
4. I am a member in good standing of the Association of Professional Engineers of British Columbia.
5. This report is based on field work carried out personally on September 20 to 23, 1987; on a review of the literature documented under References; and on the report contained in Appendix II.
6. I hold no interest, nor do I expect to receive any, in the WIND, RAIN and SLEET claims or in Secret Pass Minerals Corporation.

November 27, 1987
Vancouver, B.C.



Donald G. Allen,
P. Eng. (B.C.)

APPENDIX I
ANALYTICAL RESULTS

DSSBACHER LABORATORY LTD.

2225 S. SPRINGER AVENUE
BURNABY, B.C. V5B 3N1
TEL : (604) 299 - 6910

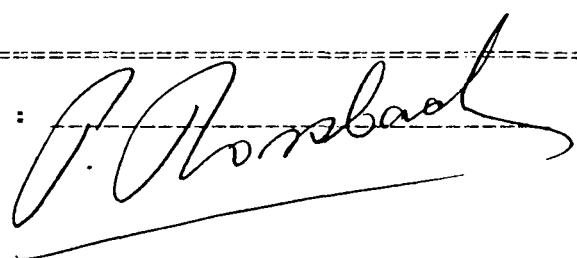
CERTIFICATE OF ANALYSIS

TO : AMM EXPLORATION LTD.
714 850 W. HASTINGS STREE
VANCOUVER, B.C.
TYPE OF ANALYSIS: Au METALLICS

CERTIFICATE#: 87627
PROJECT : 404
INVOICE# : 70173
PAGE# : 1

SAMPLE NAME	Oz/t	Oz/t	mg. Au	Wt. gm	Wt. gm	Oz/t
	-100M	+100M	+100M	-100M	+100M	FINAL
706328	0.273	0.160	0.026	243	4.74	0.271
706329	0.006	0.001	0.001	218	4.16	0.005
706330	0.227	0.182	0.032	279	5.14	0.226
706331	0.005	0.001	0.001	199	3.05	0.005
706332	0.001	0.001	0.001	201	3.80	0.001
706333	0.001	0.001	0.001	166	1.58	0.001
706334	0.001	0.001	0.001	204	2.55	0.001
706335	0.001	0.001	0.001	213	4.07	0.001
706336	0.001	0.001	0.001	194	2.21	0.001
706337	0.063	0.234	0.204	386	25.40	0.074

CERTIFIED BY :



GEOCHEMICAL ICP ANALYSIS

.500 GRAM SAMPLE IS DIGESTED WITH 3ML 3-1-2 HCL-HNO3-H2O AT 95 DEG.C FOR ONE HOUR AND IS DILUTED TO 10 ML WITH WATER.
THIS LEACH IS PARTIAL FOR MM FE CA P LA CR MG BA TI B W AND LIMITED FOR NA AND K. AU DETECTION LIMIT BY ICP IS 3 PPM.
- SAMPLE TYPE: SOLUTION

DATE RECEIVED: SEPT 29 1987 DATE REPORT MAILED: *Oct 2/87* ASSAYER: *D. J. J.* DEAN TOYE, CERTIFIED B.C. ASSAYER

ROSSBACHER LABORATORY PROJECT-CERT #87627 File # 87-4493 Page 1

404

SAMPLE#	MO	CU	PB	ZN	AG	NI	CO	MN	FE	AS	U	AU	TH	SR	CD	SB	BI	V	CA	P	LA	CR	MG	BA	TI	B	AL	NA	K	W
	PPM	PPM	PPM	PPM	PPM	PPM	PPM	PPM	%	PPM	PPM	PPM	PPM	PPM	PPM	PPM	PPM	PPM	%	%	PPM	PPM	%	PPM	%	PPM	%	%	%	PPM
AP 706321	1	43	7	60	.2	23	8	255	2.60	51	5	ND	16	30	1	2	2	22	.28	.011	24	98	.48	331	.09	5	1.41	.04	.37	173
AP 706322	4	4	2	3	.1	4	1	41	.31	8	5	ND	1	1	1	2	7	1	.01	.001	2	179	.01	32	.01	2	.02	.01	.01	16
AP 706323	1	6	2	3	.3	4	1	37	.59	9	5	ND	7	7	1	2	2	2	.01	.008	22	175	.01	30	.01	13	.15	.01	.09	16
AP 706324	1	12	2	26	.1	6	2	79	2.02	2	5	ND	15	8	1	2	2	17	.02	.014	23	134	.44	87	.05	4	.99	.03	.28	6
AP 706325	1	41	2	53	.1	35	11	207	3.47	4	5	ND	12	12	1	2	2	38	.12	.026	21	116	.91	133	.18	2	1.98	.04	.89	2
AP 706326	1	25	3	24	.1	16	6	124	1.60	2	5	ND	12	34	1	2	2	10	.86	.012	12	115	.20	42	.06	11	.76	.07	.17	3
AP 706327	1	29	13	68	.1	21	9	397	3.49	51	5	ND	5	9	1	2	2	27	.08	.059	21	22	.32	92	.02	2	1.28	.01	.04	1
S 706340	1	22	9	58	.1	18	7	277	2.86	42	5	ND	4	9	1	2	2	25	.09	.052	21	20	.29	72	.02	2	1.10	.01	.03	2
S 706341	1	23	11	60	.1	20	8	360	3.02	42	5	ND	4	10	1	2	2	27	.10	.054	24	21	.33	90	.02	2	1.20	.01	.03	1
S 706342	1	25	10	72	.2	23	10	478	3.15	53	5	ND	3	11	1	2	2	30	.11	.050	22	24	.40	115	.03	2	1.25	.01	.04	1
S 706343	1	18	4	48	.1	17	6	254	2.16	22	5	ND	2	9	1	2	2	21	.09	.040	15	18	.31	103	.02	2	.90	.01	.02	2
S 706344	1	22	15	55	.1	20	7	334	2.54	23	5	ND	2	8	1	2	2	23	.09	.044	18	21	.34	66	.02	2	1.02	.01	.03	1
S 706345	1	28	10	67	.3	24	8	347	3.28	31	5	ND	5	10	1	2	2	25	.08	.046	27	26	.41	97	.02	2	1.36	.01	.05	1
S 706346	1	17	5	38	.1	15	4	110	2.07	14	5	ND	3	8	1	2	2	21	.07	.032	24	18	.30	81	.02	2	1.07	.01	.02	2
S 706347	1	28	5	61	.1	26	9	328	2.58	19	5	ND	9	9	1	2	2	23	.11	.037	24	20	.42	89	.03	2	1.11	.01	.02	1
S 706348	1	24	5	59	.2	23	9	247	2.66	21	5	ND	11	10	1	2	2	23	.12	.039	26	21	.42	66	.03	2	1.14	.01	.04	1
S 706349	1	39	12	85	.6	35	15	416	4.04	64	5	ND	31	7	1	2	2	14	.04	.029	72	13	.34	109	.01	2	.82	.01	.04	1
S 706350	18	153	237	178	5.1	10	7	613	2.63	19	5	ND	1	465	6	96	2	10	16.73	.056	3	4	1.54	26	.01	4	.40	.01	.15	1
STD C	18	58	38	133	7.2	70	27	1043	4.08	38	18	7	40	49	18	19	22	57	.47	.086	37	60	.90	178	.08	37	1.88	.08	.14	13

ROSSBACHER LABORATORY PROJECT-CERT # 87627 FILE # 87-4493

SAMPLE#	MO	CU	PB	ZN	AG	NI	CO	MN	FE	AS	U	AU	TH	SR	CD	SB	BI	V	CA	P	LA	CR	HG	BA	TI	B	AL	MA	K	W
	PPM	PPM	PPM	PPM	PPM	PPM	PPM	PPM	%	PPM	PPM	PPM	PPM	PPM	PPM	PPM	PPM	PPM	%	%	PPM	PPM	%	PPM	%	PPM	%	%	%	PPM
A 706328	1	22	8	15	1.4	44	19	24	19.01	20364	5	8	15	3	1	280	2	3	.02	.002	8	25	.05	6	.01	11	.29	.01	.19	1
A 706329	1	24	12	127	2.9	28	11	980	3.75	1010	5	ND	14	45	1	13	2	5	1.39	.013	14	59	.74	30	.01	6	.54	.03	.18	1
A 706330	1	31	13	17	4.3	24	12	91	24.72	8552	5	6	13	11	1	176	2	5	.22	.012	11	45	.11	4	.01	16	.59	.01	.26	1
A 706331	2	35	591	2413	3.3	40	16	1103	3.56	452	5	ND	13	61	26	19	2	3	1.93	.025	12	48	.87	26	.01	5	.23	.02	.15	2
A 706332	1	31	27	119	.5	23	9	205	3.54	107	5	ND	15	6	1	15	2	4	.10	.029	19	71	.16	27	.01	5	.34	.01	.12	1
A 706333	1	38	17	107	.7	31	12	241	3.79	22	5	ND	15	8	1	4	3	9	.09	.021	21	97	.55	32	.01	3	.96	.02	.15	1
A 706334	2	41	12	85	.4	38	14	525	3.92	9	5	ND	22	9	1	3	2	9	.10	.015	31	81	.66	33	.01	2	.86	.01	.14	1
A 706335	1	21	44	38	.2	14	5	184	1.75	4	5	ND	6	6	1	2	4	7	.09	.027	10	152	.41	19	.01	2	.66	.01	.10	1
A 706336	2	24	19	86	.1	27	9	636	3.30	30	5	ND	15	16	1	14	2	3	.30	.018	24	71	.56	30	.01	10	.29	.02	.18	1
A 706337	1	21	11	17	1.4	12	8	8	27.09	20074	5	2	8	2	1	184	2	2	.02	.006	3	34	.04	4	.01	6	.12	.01	.07	1
STD C	19	58	36	131	7.2	66	27	1027	3.92	36	17	7	38	50	17	18	22	56	.49	.084	37	57	.85	178	.08	32	1.82	.08	.12	13

APPENDIX II
GEOPHYSICAL REPORT
BY
HEMINSLEY AND WHITE

INTRODUCTION

During the month of October 1987, White Geophysical Inc. was contracted by J.C. Stephen Explorations to conduct an induced polarization survey on the Sleet claims on Left Clear Creek, Yukon Territory. The purpose of this program was to delineate a mineralized zone which was previously discovered through trenching.

LOCATION AND ACCESS

The Sleet claims are located on the east end of Left Clear Creek in the Mining Division of Dawson City of Yukon Territories. On this portion of Left Clear Creek there is an active Placer operation that extends the length of the property. The claims are at an elevation of 3300 feet to 4000 feet above sea level. Access is by 47 kilometers of dry weather road from the junction of the Klondike Highway. The junction is approximately 100 kilometers east of Dawson City and 65 kilometers north of Stewart Crossing. The Sleet claims are located at Latitude 63°50'N Longitude 137°10'W.

INDUCTED POLARIZATION SURVEY

This survey was conducted utilizing a Hunttec Mark IV transmitter along with a Hunttec IV receiver. These were deployed in a gradient array with the infinite current electrodes located at 55+00N and 32+00N on line 51+50E and with a=50 meters. A detailed survey was also conducted using a pole-dipole array with a=25 meters n=1,2,3 and 4 and with the infinite current electrode located at 55+00N on line 51+50E. Approximately 10 kilometers of line was surveyed. An 8 second cycle of time was used with a delay of 100 ms. The overvoltage discharge is read, integrated, and presented as chargeability in milliseconds. The physical parameters

which govern the flow of the primary field are shown as apparent resistivity in ohm-meters.

DISCUSSION OF RESULTS

This survey was carried out in two phases. One Phase, using the gradient array, detects all mineralized zones down to a search depth of 50 meters, and the other, using the pole-dipole array, detects mineralized zones at specific depths. The data for the gradient array is represented in plan map form in Figure 4 and 5. The detailed work was carried out on selected lines represented as pseudosections in Figures 6-8.

This gradient survey was successful in detecting a local gradient in both the chargeability and resistivity data. The gradient has a north-south orientation with high chargeability and conductivity on BL 50+00N and decreasing to the south. This gradient indicates deeper burial of the anomalous zone to the south. This is consistent with the known geological determination of a bed dipping to the north. The anomalous zone trends east-west and follows the creek bed.

This east-west zone includes the mineralized showing found by trenching. The lateral extent of the mineralized zone extends past the survey area, from Line 49+00E to 59+00E. Unfortunately, time and weather constraints limited the survey area. The fact that the chargeability high trends along the BL 50+00N (which was, in fact, the northern limit of our gradient array survey), suggests that the anomalous zone extends up the north bank of the creek as well as the south bank. It was with this in mind, that the detail survey lines were chosen. Lines 50+00E, 51+00E and 55+00E were surveyed 200 meters on each side of the Baseline 50+00N with $a=25$ meters and $n=1,2,3$ and 4. All of these lines have

anomalies in the 45-55 ms. range at a depth of 15m to 50m. The apparent resistivity highs near the surface indicate gravel, ie. tailings' piles (see Figures 2 & 3). At depth the apparent resistivity lows correspond to high chargeabilities which indicate an altered volcanic zone with disseminated pyritic and/or graphitic argillites. Since the highest chargeability values were with $n=4$, the anomalous zone appears to have a greater depth extent. Also some of the high chargeabilities were concentrated in some areas indicating very conductive material. This anomalous zone trends at a bearing of approximately 090 and includes the showing discovered by trenching at station 49+75N on line 55+00E. Note that the data between lines 51+00E and 55+00E on Figures 2 & 3 is inferred by the gradient array data Figures 4 & 5.

CONCLUSIONS AND RECOMMENDATIONS

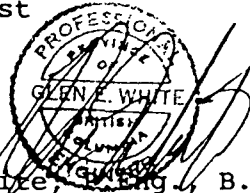
White Geophysical Inc. conducted approximately 10 kilometers of induced polarization surveying on J.C. Stephen Explorations' Sleet property. A zone of low resistivity and high chargeability was detected in an east-west trend which is at least 500 meters in strike length and at least 200 meters wide. The survey showed anomalous readings over the trenched showing. These correlated well with the detected trend. The anomalous zone appears to have a shallow dip to the north, on the south side of Left Clear Creek. However, due to weather and time constraints the zone was not fully delineated. The author recommends a more extensive induced polarization survey when weather permits. The recommended survey would be a pole-dipole array with $a=50$ meters $n=1,2,3$ and 4 to delineate the depth of the anomalous zone. Also enlarging the survey area to include Line 45+00E to Line 65+00E, and at least 500 meters on each side of the baseline 50+00N is recommended.

Further trenching in conjunction with induced polarization results would also be advisable. After having delineated the anomalous zone through induced polarization and trenching, then drill targets could be chosen with more accuracy.

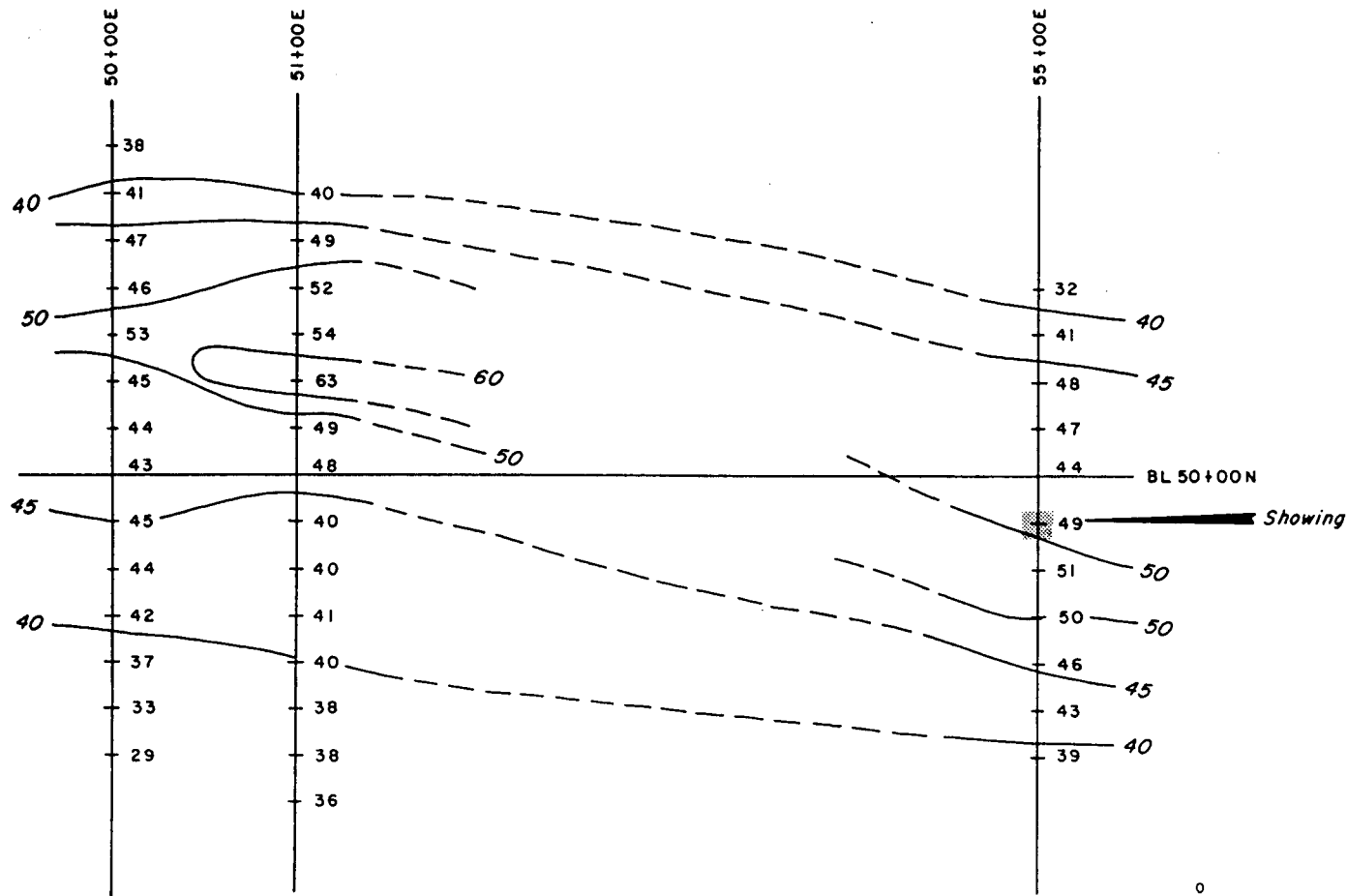
Respectfully Submitted,

Geoff Heminsley

Geoffrey Heminsley, B.Sc.,
Geophysicist



Glen E. White, B.Sc.,
Consulting Geophysicist



J C STEPHEN EXPLOR. LTD.
SECRET PASS MINERALS CORP.

SCOTTIE THOM PROJECT
INDUCED POLARIZATION SURVEY
DETAIL SURVEY CHARGEABILITY

DATE : OCT., 1987

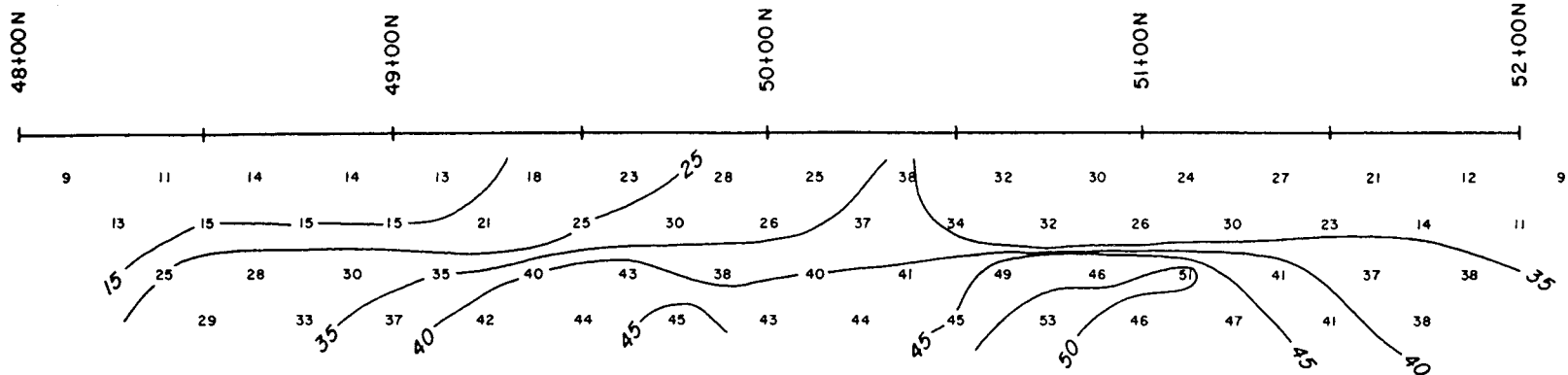
FIG. 2

INSTRUMENT - HUNTEC MARK

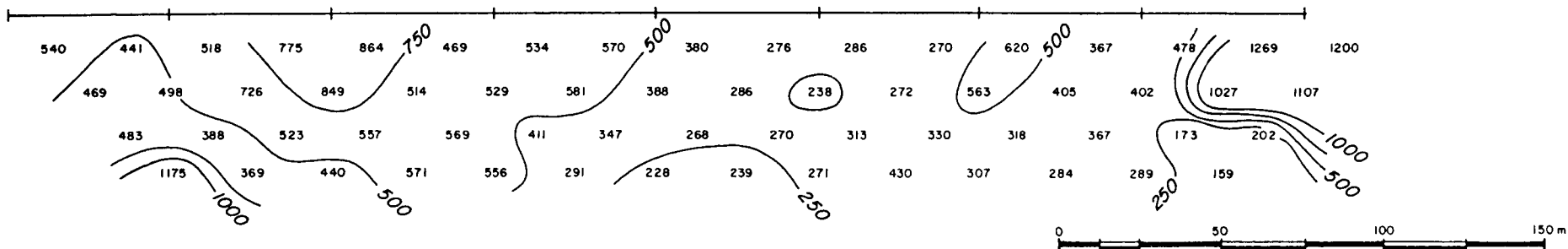
To accompany the Geophysical Report on the

WHITE GEOPHYSICAL INC.

APPARENT CHARGEABILITY (Milliseconds)



APPARENT RESISTIVITY (Ohm-meters)



INSTRUMENT - HUNTEC MARK

To accompany the Geophysical Report on the

J C STEPHEN EXPLOR. LTD.
SECRET PASS MINERALS CORP.

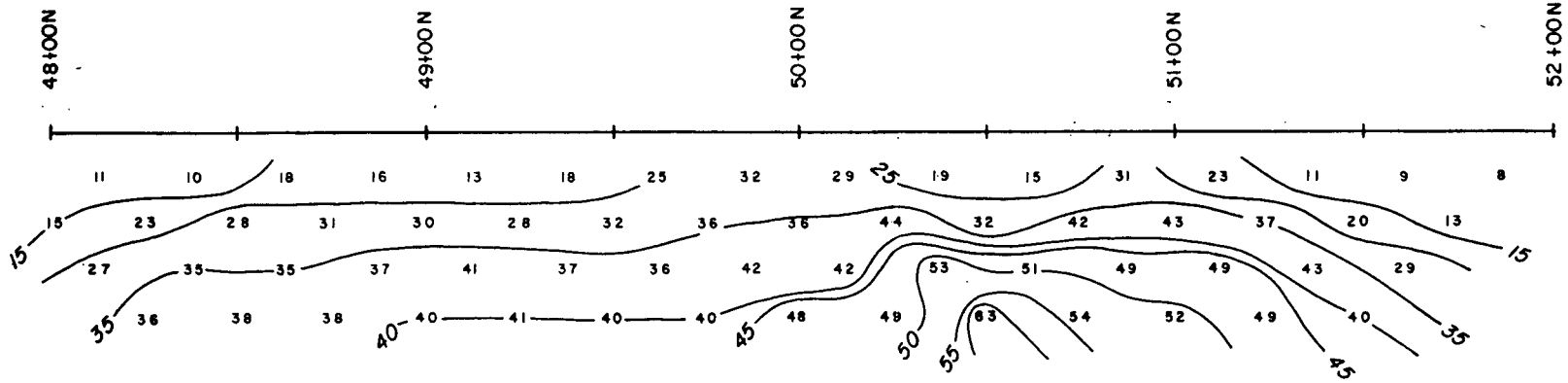
SCOTTIE THOM PROJECT
INDUCED POLARIZATION SURVEY
LINE 50+00E

DATE : OCT, 1987

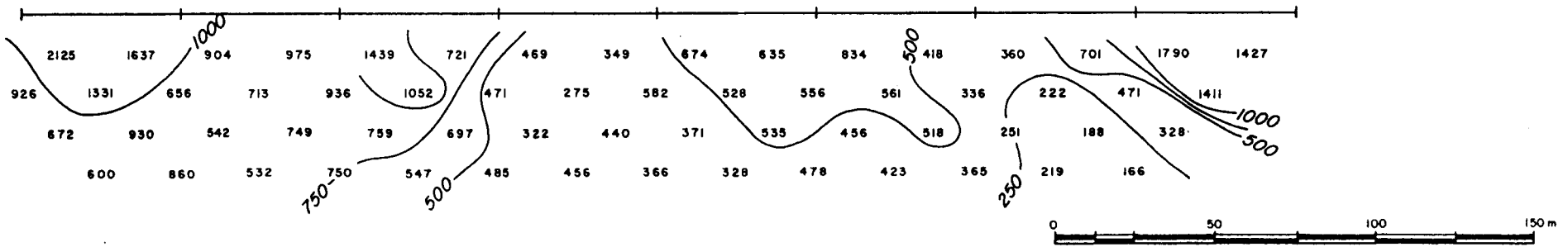
FIG. 6

WHITE GEOPHYSICAL INC.

APPARENT CHARGEABILITY (Milliseconds)



APPARENT RESISTIVITY (Ohm-meters)



INSTRUMENT - HUNTEC MARK

WHITE GEOPHYSICAL INC.

To accompany the Geophysical Report on the

J C STEPHEN EXPLOR. LTD.
SECRET PASS MINERALS CORP.

SCOTTIE THOM PROJECT
INDUCED POLARIZATION SURVEY
LINE 51+00E

DATE : OCT., 1987

FIG. 7

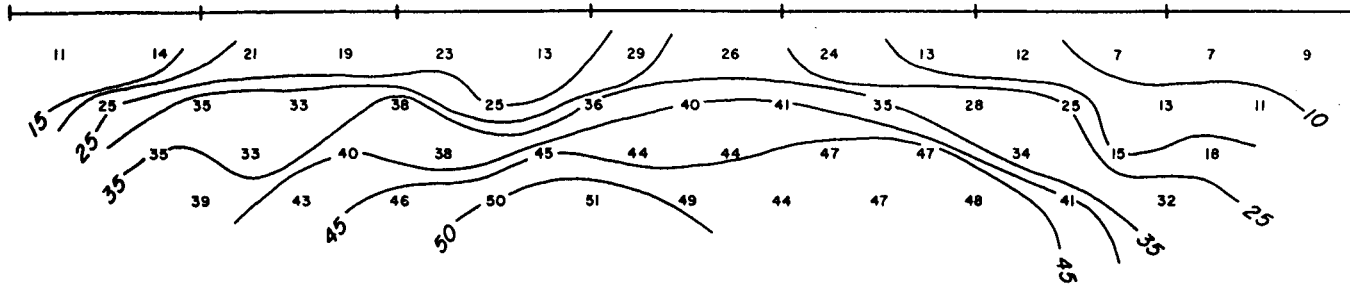
48+00 N

APPARENT CHARGEABILITY (Milliseconds)

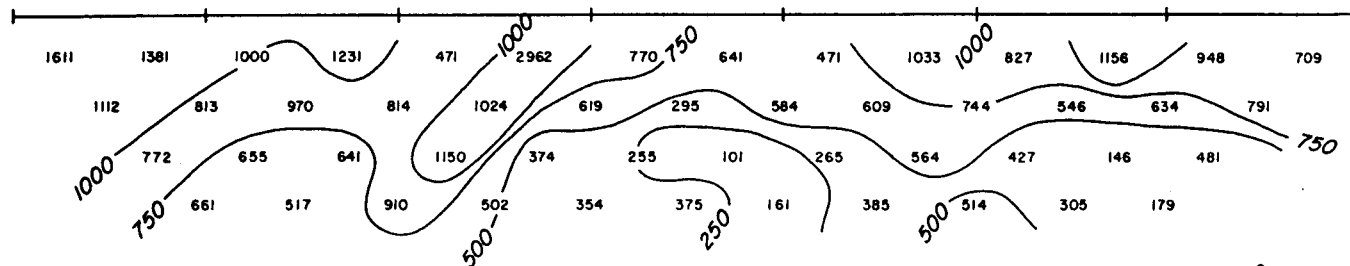
49+00 N

50+00 N

51+00 N



APPARENT RESISTIVITY (Ohm-meters)



J C STEPHEN EXPLOR. LTD.
 SECRET PASS MINERALS CORP.
 SCOTTIE THOM PROJECT
 INDUCED POLARIZATION SURVEY
 LINE 55+00E
 DATE : OCT., 1987

INSTRUMENT : HUNTEC MARK

To accompany the Geophysical Report on the

WHITE GEOPHYSICAL INC.

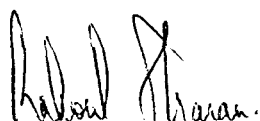
FIG. 8

CERTIFICATE OF THE ISSUER AND THE PROMOTERS

DATED: MARCH 25, 1988

The foregoing constitutes full, true and plain disclosure of all material facts relating to the securities offered by this Prospectus as required by the Securities Act and its regulations.

THE COMPANY

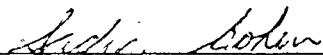


Rahoul Sharan
Chief Executive Officer

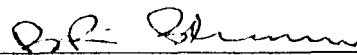


Ross Galbraith
Chief Financial Officer

ON BEHALF OF THE BOARD OF DIRECTORS

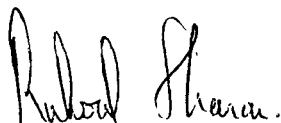


Sadia Cohen
Director

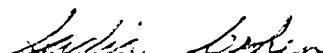


Brij Raj Sharan
Director

PROMOTERS



Rahoul Sharan



Sadia Cohen