

G. MACDONALD AND ASSOCIATES LIMITED
Consulting Professional Geologists

123 - 470 Granville Street
Vancouver, B.C.
V6C 1V5

(403) 668-2044

(604) 684-2304

PROSPECTUS
for UNIVEX
MINING CORP. LTD

Sept 8, 1986.

062216
#8 JEAN

GEOLOGICAL REPORT

FOR

ANOORAQ RESOURCES CORPORATION

ON THE

MONTANA MOUNTAIN PROPERTY

NTS CLAIM SHEET 105D - 2

by

G. MACDONALD, P. GEOL.

Whitehorse, Yukon

March 15, 1986

TABLE OF CONTENTS

	Page
INTRODUCTION	1
SUMMARY	2
PROPERTY COMPOSITION AND LOCATION	3
HISTORY AND PREVIOUS EXPLORATION	4
TOPOGRAPHY AND CLIMATE	6
REGIONAL GEOLOGY	7
PROPERTY GEOLOGY	9
CONCLUSIONS AND RECOMMENDATIONS	13

LIST OF FIGURES

Figure 1	Location Plan
Figure 2	Claim Plan
Figure 3	Geological Summary

LIST OF TABLES

Table I	Montana Mountain Property
Table II	Table of Formations
Table III	Table of Assay Results
Table IV	Assay Results, Zone 2 Trench

APPENDIX

- 1 - STATEMENT OF QUALIFICATIONS**
- 2 - LIST OF REFERENCES**
- 3 - ASSAY WORK SHEETS**
- 4 - OLD ASSAY DOCUMENTS**

INTRODUCTION

This report was prepared at the request of Mr. John Tanner, Director of Anooraq Resources Corporation. The report summarizes two visits to the property during August 1984 accompanied by Mr. T. McCrory, Prospector and, on one occasion, by Mr. R. Watson, the property vendor. Additional property visits were made during the 1985 field season by G. Macdonald and Ron Robertson to examine an exploration program of bulldozer and blast trenching being conducted by McCrory Holdings Ltd. on behalf of Anooraq. Available public and private data was reviewed in conjunction with this summary. The author is familiar with the area having being involved with various exploration projects in the vicinity between 1970 and 1984.

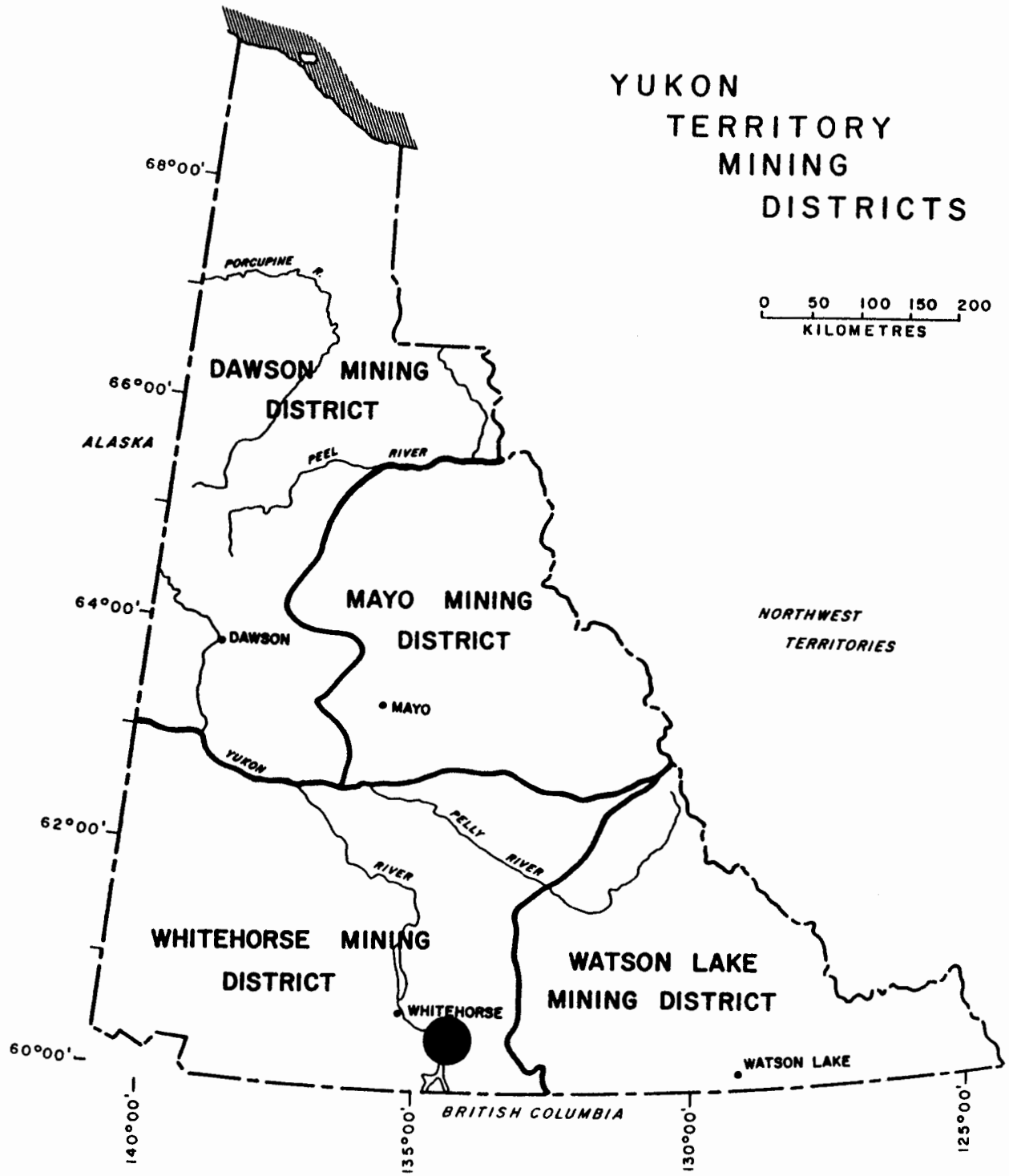


FIGURE 1

SUMMARY

The Anooraq Montana Mountain Property, comprised of 22 located and 3 leased Yukon Mineral Claims, covers significant occurrences of gold and silver mineralization in three distinct environments. The property is underlain by volcanic and granitic rocks which regionally host other known gold and silver deposits. High gold and silver assays were obtained during 1984 from Anooraq vein material with no visible gold, suggesting that discrete gold-silver minerals may be present. The Montana Mountain area has a history of exploration and limited production dating from the mid 1880's.

Infrastructure locally is good with major arterial roads linked to the Anooraq Claims by a gravel access road, a nearby community (Carcross, Y.T.) and electric power available to the nearby Venus Mine (United Keno Hill Mines Ltd.).

The Anooraq property covers geology permissive to develop potentially economic precious metals deposits. Consequently a two-phase program budgeted at \$225,000.00 is recommended to evaluate the claim group.

PROPERTY COMPOSITION AND LOCATION

Anooraq's Montana Mountain property is comprised of 3 leased, and 22 located Yukon Mineral Claims as presented in Table I. In Yukon, leased claims are held on a 21-year renewable grant basis. Located claims are maintained by annual performance of assessment work totaling \$100.00 per claim. In the first three years after staking (such as these Anooraq claims) work may include mapping and various surveys; after three years only physical work (eg: diamond drilling, trenching) is acceptable for assessment credit.

TABLE I
Montana Mountain Property

<u>Name</u>	<u>Type</u>	<u>Grant No.</u>	<u>Expiry</u>
Jean	Lease Claim	19237	2000
Kodak	Lease Claim	19304	2000
Hazel	Lease Claim	19285	2000
MON 1-16	Located	YA82825-40	1987
TB 1-6	Located	YA82967-72	1987

These claims are located in the Whitehorse Mining District and are administered by the District Mining Recorder located at Whitehorse, Yukon.

The property is located on Montana Mountain, 7 miles due south of the community of Carcross, Yukon, which is located at KM105 on the Skagway to Whitehorse highway. The claims are centered at 60°04'N - 134°43'W. Access to the property is by good gravel road from Carcross, Y.T.

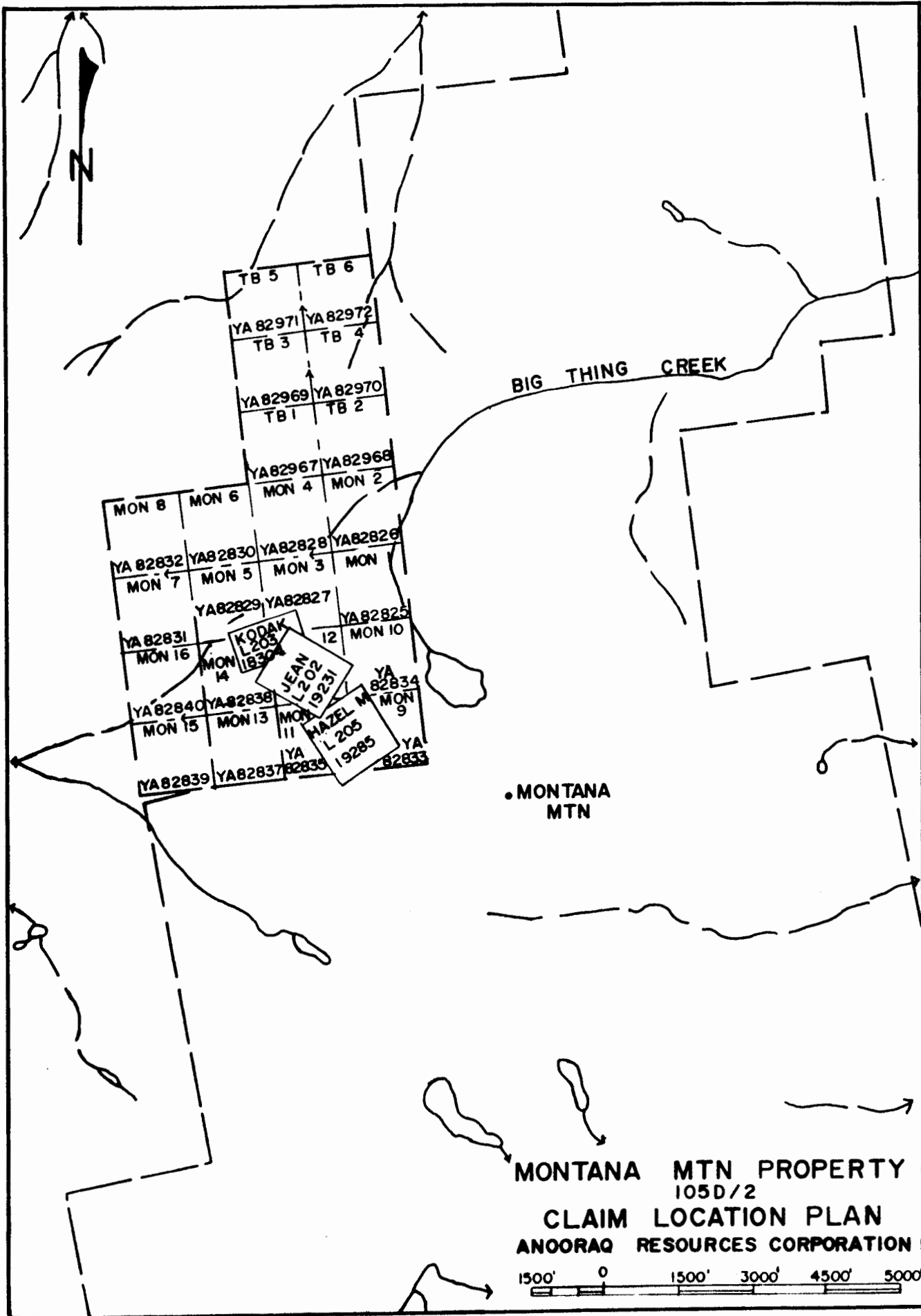


FIGURE 2

HISTORY AND PREVIOUS WORK

The Montana Mountain - Wheaton River District has had a sporadic history of spurts of exploration activity followed by long periods of relative inactivity. The region was first explored for gold and silver previous to the discovery of rich placer gold deposits in the Klondike in 1896. This early phase of development by prospectors from Alaska, located precious metal deposits in the Wheaton River area. Exploration slowed following 1896, when the Klondike rush drove most miners away, until around 1906 - 1909, when numerous gold and silver occurrences were located on Montana Mountain and in the Gold Hill - Tally-Ho Mountain areas. Between 1909 and 1921, development in the region was active and limited production was from a number of early discoveries including Venus, Montana, Arctic - Big Thing, Tally-Ho, and others.

A period of dormancy ensued from the early 1920's (when gold discoveries in Alaska again drew many prospectors away) until the 1960's, when development was renewed at several previously operated deposits. Mills were operated briefly during the late 1960's - early 1970's at the Arctic Gold and Silver (Big Thing) and Venus Mines. However, high operating costs coupled with low precious metal prices led to termination of these projects. Additional exploration and development at the Venus veins was conducted by United Keno Hill Mines Ltd. between 1980 and 1984. A 100 tons-per-day mill was erected, but not used, by United Keno Hill Mines Ltd. for Venus during 1981 and 1982.

The Jean Claim was staked by Mathew Watson in September 1936 following discovery of gold-silver bearing quartz float $2\frac{1}{2}$ miles northwest of the Montana Mine. The Kodak and Hazel Claims were added in June 1939 following encouraging results from hand trenching programs during 1937 and 1938, which exposed a north 30° west trending vein assaying up to 8.6 oz. gold per ton over widths of 12 - 24". Development work was idled by the outbreak of World War 2. The claims were surveyed to lease in 1958 and optioned to New Imperial Mines Ltd. in 1960. Exploration by the optionees included further trenching, road construction and 200 feet of adit-entry drifting, which

did not achieve its target, in 1961 and 1962. The option was terminated following this program. Additional exploration consisting of four short underground drill holes, was performed by Arctic Gold and Silver Mines Ltd. under an option in 1967 as a part of their assessment of all the available locally known gold-silver occurrences in conjunction with their Big Thing mill and mine development project. DuPont Exploration identified a gold silt sample anomaly on the stream draining the property to the west and performed limited mapping on claims staked as a follow-up in 1981.

During 1984 and 1985, Anooraq Resources Corporation conducted an exploration program on the property under an option agreement from R. Watson. Work performed to date by Anooraq includes bulldozer and blast trenching, prospecting, mapping and road construction. The original vein ("Zone 1") was re-sampled and a second mineralized area, "Zone 2", was located. One trench was blasted in "Zone 2" and chip sampled across 9 feet in 1 foot (12-inch) intervals. Results of the Zone 2 assays are presented as Table IV of this report.

TOPOGRAPHY AND CLIMATE

The Montana Mountain district occupies a transition area between the interior plateau region and the granitic mountains of the Coast Range. Montana Mountain is a high rugged group of peaks rising 4000 to 5000 feet above the larger lake levels and separates Lake Bennett on the west from Nares and Tagish Lakes to the north and east. Maximum elevations exceed 7000 feet above sea level and deep incision by small drainage systems has left many very steep ($+45^{\circ}$) slopes locally. Montana Mountain is surrounded on three sides by deeply cut glacial valleys. De-glaciation features, (till, hanging valleys etc.) are common in the area.

The Montana Mountain region is characterized by a moderated interior continental climate with warm summers and generally cloudy, cold winters. Close proximity to the Pacific Ocean, and a series of mountain ice-fields to the south, tends to result in fairly continuous strong southerly winds in the area, particularly at higher altitudes. Snowfall is moderate to heavy, reflecting the effect of moist Pacific air impacting on the higher mountain elevations.

REGIONAL GEOLOGY

Montana Mountain occupies a position close to the junction of three tectonic terranes: the Atlin Terrane, the Whitehorse Trough and the Coast Plutonic Complex. Stratified rocks of the first two terranes form a local basement flanking a major volcanic complex of late Cretaceous or early Tertiary age. The youngest phase of this complex is a large body of granitic rock and associated rhyolite porphyry dykes and sills. Quartz veining and associated precious metal mineralization at Montana Mountain show a close spatial relationship to this volcanic and intrusive complex; similar mineralization is related to equivalent volcanic rocks of the Skukum Group and Mount Nansen Group elsewhere in southern Yukon.

An older metavolcanic assemblage of the Atlin Terrane outcrops along the lower eastern slope of Montana Mountain. This unit probably forms part of the Mississippian Nakina formation. Similar basaltic and andesitic metavolcanic rocks, referred to the Upper Triassic Lewes River Group of the Whitehorse Trough, occupy a large area on the west flank of Montana Mountain along the east shore of Bennett Lake. Outcrops of Lower to Middle Jurassic Laberge Group siltstones, argillites, greywackes and conglomerates of the Whitehorse Trough Terrane extend along the east and west boundaries of the Montana Mountain Volcanic Complex.

The volcanic complex consists of flows, tuffs and breccias of intermediate composition (predominantly andesite and dacite) intruded locally by porphyritic andesite plugs and breccia bodies. Plate to orange weathering felsic dykes are present throughout, most prominently as ring dykes around the southern margins of the complex. The north end of the complex is occupied by the large Carcross pluton which intrudes the slightly older volcanic units. The pluton is predominantly quartz monzonite in composition but becomes much more felsic (alaskite and quartz syenite) towards the contact with volcanic rocks of the Montana Mountain Complex. Locally, this contact is occupied by a narrow unit of aplite.

Quartz veins with pyrite, arsenopyrite, galena, sphalerite and chalcopyrite carry economic amounts of gold and silver mineralization at several places within the volcanic and intrusive rocks of the complex (Venus, Arctic (Big Thing), Peerless, Jean, etc.).

TABLE II

Table of Formations

Q	QUATERNARY	Glacial till, glacial and fluvioglacial sands and gravels
Kg	LATE CRETACEOUS TO EARLY TERTIARY	Granite and quartz syenite intrusion; rhyolite dykes; andesite, basalt, dacite flows, tuffs, breccias and minor intrusions
Kva	LOWER-MIDDLE JURASSIC LABERGE GROUP	Conglomerate, siltstone, argillite, greywacke; includes andesite and andesite breccia
Jga	UPPER TRIASSIC LEWES RIVER GROUP	Andesite, basalt, volcanic breccia, limestone
Pva	MISSISSIPPIAN-PERMIAN (CACHE CREEK OR <u>TAKU</u> GROUPS)	Amphibolite; minor limestone, chert and serpentinized ultramafic rocks

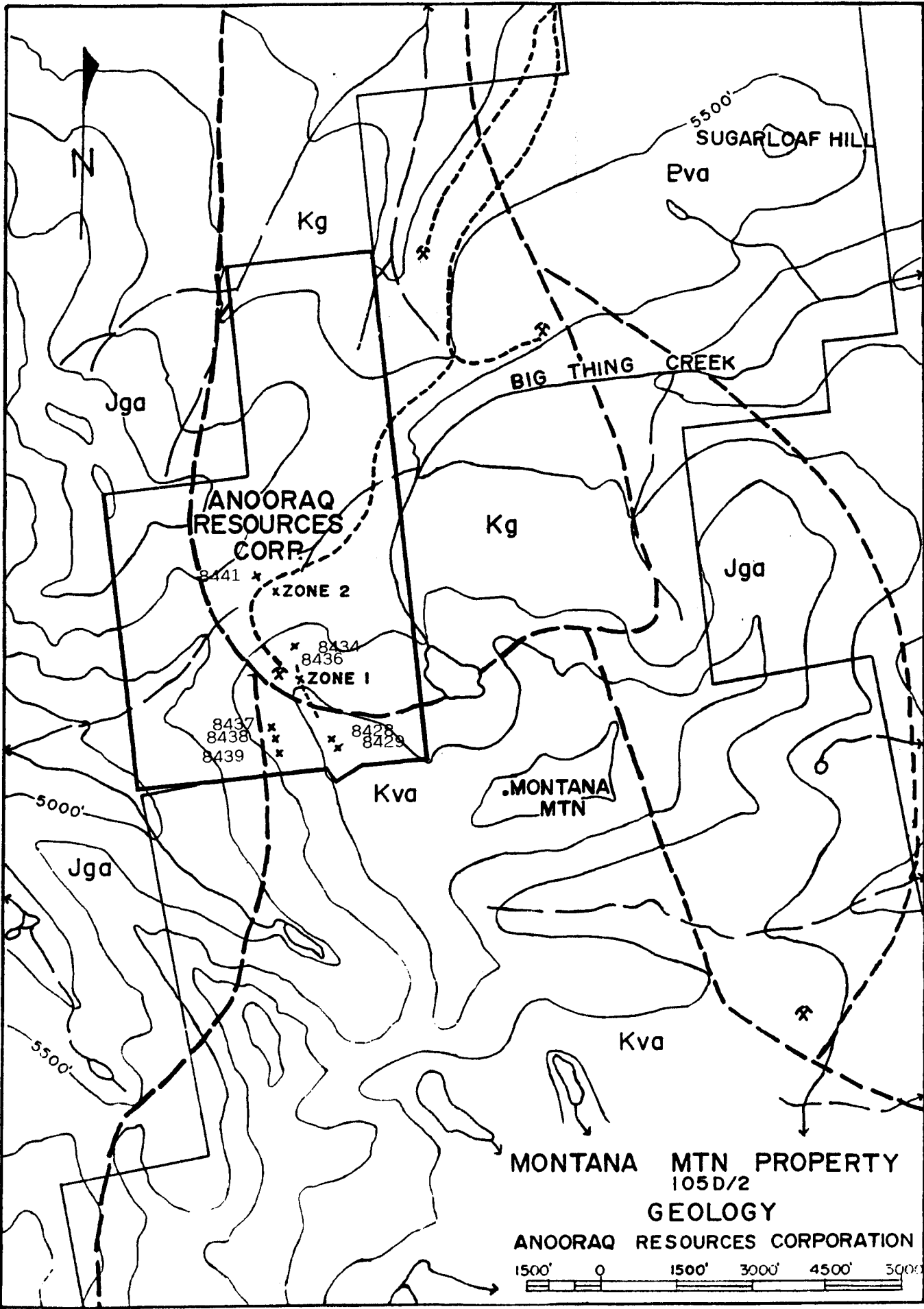


FIGURE 3

PROPERTY GEOLOGY

The Anooraq property covers an intrusive contact region between early Cretaceous(?) Hutshi Group andesitic flow volcanics and late Cretaceous quartz monzonite. The andesites are weakly regionally metamorphosed but only moderately contact altered by the intruding action. Granitic rocks are fresh near the contact environment and may be moderately to intensely fractured locally. Tectonic action has produced a series of large fractures, generally striking about N 30° W with a subsidiary fracture system developed perpendicular to the prominent orientation.

Quartz-calcite veins and micro-veins have been emplaced in the fracture systems. Widths of these veins vary from 1/8" to 1" in cross-fault veinlets to 12" - 24" in main orientation veining.

The main veining is apparently present as two sub-parallel vein systems oriented approximately along the granite-andesite contact. These two zones may be actually faulted portions of one vein. The quartz-calcite veins carry moderate amounts of sulphide material in both localities observed. The upper zone contains up to 20% of galena-sphalerite-pyrite ± arsenopyrite over widths up to 24", while the lower zone contains a stibnite-arsenopyrite-sphalerite-pyrite-galena-semblage in a vein fracture swarm over 8 - 10 feet wide. Assay results from trenching in 1956 indicated that the "Zone 1" vein averaged 0.74 ounces of gold per ton across an average width of 1.76 feet for an exposed length of 75.5 feet. Two samples (Nos. 8430 and 8433) analyzed in 1984 of vein material returned assays of 27.42 and 1.008 ounces of gold per ton across widths of 12" and 18" respectively. Assay results are summarized in Table III. A large boulder of well mineralized quartz float approximately 100 meters northwest of Zone 1 was assayed as samples Nos. 8434 and 8436. Check assays of this material confirmed gold values of 27.4, 15.1 and 13.28 ounces of gold per ton, respectively.

Portions of the lower zone (Zone 2) were tested by three samples (W4, W5 and 8440) in 1984. These returned gold values of 1.96, 0.43 and 1.918 ounces of gold per ton, respectively. Trenching later during 1984 developed the Zone 2 mineralization and returned an average assay of 1.20 ounces of gold per ton across 9 feet. Table IV summarizes the channel sample across Zone 2. Mineralization at Zone 2 consists of fracture filling arsenopyrite, pyrite and stibnite. Grade is possibly controlled by fracture density.

No visible gold has been observed in either zone. Silver to lead (OPT/%) ratios commonly exceed 2:1 and are usually above 3:1 for the higher grade samples. This feature, coupled with a lack of visible gold in the high assay samples, suggests that a discrete gold-silver mineral, perhaps electrum or a telluride, is present. In addition, grab samples of pyritized quartz monzonite with approximately 15% finely disseminated pyrite (No. 8435) from the dump of the New Imperial Mines adit, returned an assay of 0.126 OPT gold. This rock is weakly altered to the propylitic stage, and did not exhibit either fracturing or veining. Several apparently unmineralized quartz-carbonate veins, 1"-3" wide, present cutting the andesite volcanic lithology were assayed (Nos. 8428, 8429, 8437, 8438, 8439 and 8441) and returned values from 0.01 to 0.128 OPT gold.

Precious metals are therefore present in three different environments on the Anooraq claims:

- (a) Associated with base metals in North 30° West trending quartz veins up to 24" wide;
 - (b) In apparently unmineralized (low sulphide) quartz veins up to 3" wide trending approximately west in andesite;
 - (c) With finely disseminated pyrite in weakly altered granitic rock in the old adit.
-

TABLE III
Assay Summary

Sample No.	Location*	Width	Au (OPT)	Ag (OPT)	Pb %	Zn %
8428	Andesite SE of adit	Grab	0.01	-	-	-
8429	Andesite SE of adit	Grab	0.01	-	-	-
8430	Upper trench (Zone 1)	12"	27.42	32.04	10.6	6.52
8431	Upper trench wall (Zone 1)	Grab	0.208	0.43	0.32	-
8432	Lower trench wall (Zone 1)	Grab	0.046	0.03	0.10	-
8433	1 m SE of 8430 (Zone 1)	18"	1.008	5.00	3.74	-
8434	Boulder 100 m NW of Upper trench	Grab	15.11	17.99	7.10	-
8435	Adit dump	Grab	0.126	-	-	-
8436	Same as 8434	Grab	13.28	18.60	5.98	3.05
8437	Andesite SW of adit	Grab	0.128	-	-	-
8438	Andesite SW of adit	Grab	0.032	-	-	-
8439	Andesite SW of adit	Grab	0.032	-	-	-
8440	Lower zone (Zone 2)	6"	1.918	5.12	2.14	-
8441	Andesite float	Grab	0.038	-	-	-
W1	Upper trench (Zone 1)	Grab	1.072	4.03	2.42	1.11
W4	Zone 2	Grab	1.960	1.66	-	-
W5	Zone 2	Grab	0.43	0.53	-	-

* Sample locations are shown on Figure 3 of this report; individual sample sites are indicated by their assay number, while groups of samples pertaining to mineralized structures are shown as Zone 1 or Zone 2.

TABLE IV
Assay Results for Kodak Claim Trench ("Zone 2")

Sample No.	Au (oz/t)	Ag (oz/t)	Sample Length
16764	1.91	3.48	12"
16765	0.91	2.55	12"
16766	2.63	5.42	12"
16767	0.06	0.69	12"
16768	3.01	5.15	12"
16769	1.98	4.23	12"
16770	0.01	0.38	12"
16771	0.05	0.30	12"
16772	0.27	1.31	12"
<hr/>			
Average Grade	1.20	2.46	9'

Samples 16764-16772 represent a continuous chip sample at 12" intervals across a mineralized fracture zone exposed by 1984 blast trenching as "Zone 2". Samples averaged approximately 5 pounds each of rock material. Location of the sampled section is identified as "Zone 2" on Figure 3 of this report.

CONCLUSIONS AND RECOMMENDATIONS

Gold and silver are present in significant quantity in three environments on the Anooraq Montana Mountain property. Consequently, a two phase program is recommended undertaken to evaluate the precious metal occurrences as follows:

PHASE 1

Surveyed Grid (20 km)	\$ 10,000.00
Geological Mapping and Prospecting	5,000.00
Geochemical Survey (Rock and Soil)	20,000.00
Adit Rehabilitation, Sampling and Survey	5,000.00
Road Construction and Maintenance	5,000.00
NQ Diamond Drilling (1500 feet)	<u>60,000.00</u>

Phase 1	<u>\$ 105,000.00</u>
----------------	-----------------------------

PHASE 2 (Contingent upon results of Phase 1)

Diamond Drilling (2000 feet)	\$ 80,000.00
Underground Drilling (500 feet)	25,000.00
Laboratory Study	<u>5,000.00</u>

Phase 2	<u>\$ 110,000.00</u>
----------------	-----------------------------

Contingency	<u>10,000.00</u>
-------------	------------------

Total Project Cost	<u><u>\$ 225,000.00</u></u>
---------------------------	------------------------------------

A surveyed grid with a baseline extending approximately 1.5 km N 20°W from Zone 1 is essential to control further exploration on the gold occurrences of the Montana Mountain property. Surveyed cross-lines extending 250 meters either side of the baseline should be sited regularly at 100 meter intervals to facilitate accurate mapping and geochemical reconnaissance. Several short detail lines at 25 meter intervals are required to cover Zone 2 to indicate possible extensions of this zone. Soil samples should be obtained at 20 meter intervals along the grid lines and analyzed for arsenic, lead, silver and gold content.

A survey should be made to relate Zone 1 location to the adit level. Diamond drilling of Zone 1 and 2 targets utilizing an NQ wireline core rig is recommended to test for width and depth extent of the surface mineralization. Five short (300 feet) holes should initially be adequate to test these structures. Sampling of the pyritic zones cut by the adit should also be conducted during Phase 1. Depending on the results of the Phase 1 drilling, additional surface and underground drilling to test for zone extensions is recommended.

Respectfully submitted,

A handwritten signature in cursive script, appearing to read "G. Macdonald".

G. Macdonald, P.Geol.

APPENDIX 1

STATEMENT OF QUALIFICATIONS

G. MACDONALD AND ASSOCIATES LIMITED
Consulting Professional Geologists

123 - 470 Granville Street
Vancouver, B.C.
V6C 1V5

(403) 668-2044

(604) 684-2304

CERTIFICATE OF QUALIFICATIONS

I, Glen C. Macdonald, with business and residential address in Whitehorse, Yukon, do hereby certify that:

1. I am a consulting professional geologist.
2. I am a graduate of the University of British Columbia (B.Sc. Geology, 1973 and B.A. Economics, 1971).
3. I am registered as a Professional Geologist by the Association of Professional Engineers, Geologist and Geophysicists of Alberta (No. 36214).
4. I am registered as a Professional Geologist by the Association of Professional Engineers, Geologists and Geophysicists of the Northwest Territories (No. L166).
5. I am a member in good standing of the Canadian Institute of Mining and Metallurgy.
6. I have practised Mining and Exploration in Yukon, northern British Columbia and Northwest Territories since 1973. I began private practice in 1982 after leaving the position of Regional Geologist for Noranda Exploration Company Limited, Whitehorse, Yukon.
7. I have examined the showings and area of the Montana Mountain property of Anooraq Resources Corporation and have reviewed all available private and public information on the property to compile this report.
8. I have not received, nor do I expect to receive, any interest in properties or securities of Anooraq Resources Corporation.
9. I hereby grant my permission for Anooraq Resources Corporation to use this report for filing with the Vancouver Stock Exchange as partial requirement of a Statement of Material Facts or for any legal purposes normal to the business of Anooraq Resources Corporation.

DATED at Whitehorse, Yukon this 16th day of March, 1986.



Glen C. Macdonald, P. Geol.

G. MACDONALD AND ASSOCIATES LIMITED
Consulting Professional Geologists

123 - 470 Granville Street
Vancouver, B.C.
V6C 1V5

(403) 668-2044


(604) 684-2304

CERTIFICATE OF QUALIFICATIONS

I, Glen C. Macdonald, with business and residential address in Whitehorse, Yukon, do hereby certify that:

1. I am a consulting professional geologist.
2. I am a graduate of the University of British Columbia (B.Sc. Geology, 1973 and B.A. Economics, 1971).
3. I am registered as a Professional Geologist by the Association of Professional Engineers, Geologist and Geophysicists of the Northwest Territories (No. L166).
4. I am registered as a Professional Geologist by the Association of Professional Engineers, Geologist and Geophysicists of Alberta (No. 36214).
5. I am a member in good standing of the Canadian Institute of Mining and Metallurgy.
6. I have practised Mining and Exploration in Yukon, northern British Columbia and Northwest Territories since 1973. I began private practice in 1982 after leaving the position of Regional Geologist for Noranda Exploration Company Limited, Whitehorse, Yukon.
7. I have examined the showings and area of the Montana Mountain property of Univex Mining Corp. Ltd. and have reviewed all available private and public information on the property to compile this report.
8. I have not received, nor expect to receive, any interest in properties or securities of Univex Mining Corp. Ltd.
9. I hereby grant my permission for Univex Mining Corp. Ltd. to use this report for filing with the Vancouver Stock Exchange as partial requirement of a Statement of Material Facts or for any legal purposes normal to the business of Univex Mining Corp. Ltd.

DATED at Vancouver, British Columbia this 10th day of June, 1986.


Glen C. Macdonald, P. Geol.

APPENDIX 2

LIST OF REFERENCES

LIST OF REFERENCES

- i) CAIRNES, D.D.
GSC, Memoir 31, Wheaton District 1912
- ii) GSC Paper 64 - 36 Pages 39 - 40
- iii) WHEELER, J.O.
GSC Memoir 312
Whitehorse Map Area 1916

APPENDIX 3

ASSAY WORK SHEETS



Chemex Labs Ltd.

Analytical Chemists • Geochemists • Registered Assayers

212 Brooksbank Ave.
North Vancouver, B.C.
Canada V7J 2C1

Telephone: (604) 984-0221
Telex: 043-52597

CERTIFICATE OF ASSAY

TO : ANOORAQ RESOURCES CORPORATION

**

CERT. # : A8415094-001-A
INVOICE # : 18415094
DATE : 27-AUG-84
P.O. # : NONE

12447 - 208TH. ST.
MAPLE RIDGE, B.C.
V2X 4X1

Sample description	Prep code	Cu %	Pb %	Zn %	Ag FA oz/T	Au FA oz/T	
BO-1	207	1.04	--	--	--	<0.003	--
TMO-14	207	--	--	--	--	0.008	--
W-1	207	--	2.42	1.11	4.03	1.072	--
W-2	207	--	--	--	0.37	0.032	--
W-3	207	--	0.32	0.14	0.30	0.062	--
W-4	207	--	--	--	1.66	1.960	--
W-5	207	--	--	--	0.53	0.430	--
W-6	207	--	--	--	0.10	0.024	--

.....
Registered Assayer, Province of British Columbia





Chemex Labs Ltd.

212 Brooksbank Ave.
North Vancouver, B.C.
Canada V7J

Analytical Chemists • Geochemists • Registered Assayers

Telephone: (604) 984-0221
Telex: 043-52597

CERTIFICATE OF ASSAY

TO : NEILSON, MIKE

12447 - 208 ST.
MAPLE RIDGE, B.C.
V2X 4X1

** CERT. # : A8415311-001-A
INVOICE # : I8415311
DATE : 6-SEP-84
P.O. # : NONE

Sample description	Prep code	Pb %	Zn %	Ag oz/T		Au oz/T			
				RUSH	FA	RUSH	FA		
8428	236	--	--	--	--	0.010	--	--	--
8429	236	--	--	--	--	0.010	--	--	--
8430	236	10.60	6.52	32.04	27.422	--	--	--	--
8431	236	0.32	--	0.43	0.208	--	--	--	--
8432	236	0.10	--	0.03	0.046	--	--	--	--
8433	236	3.74	--	5.00	1.008	--	--	--	--
8434	236	7.10	--	17.99	15.112	--	--	--	--
8435	236	--	--	--	0.126	--	--	--	--
8436	236	5.98	3.05	18.60	13.280	--	--	--	--
8437	236	--	--	--	0.128	--	--	--	--
8438	236	--	--	--	0.032	--	--	--	--
8439	236	--	--	--	0.032	--	--	--	--
8440 <i>low 3m</i>	236	2.14	--	5.12	1.918	--	--	--	--
8441	236	--	--	--	0.038	--	--	--	--

.....
Registered Assayer, Province of British Columbia



Analysis Certificate

Analytical Services, Trail, B.C.



SB07 850515 0000 MCRORY HOLD' H HAMILTON

AU OZ/TON	AG OZ/TON	CU %	PB %	ZN %	S %	SI02 %	AL203 %	FE %
3.698	7.55	0.01	3.2	2.6	4.6	79.7	0.9	4.0

CAO %	SB %	AS %	BI %	F %	MGO %	MN %
0.35	0.02	2.6	<0.01	0.013	0.03	0.02

Certificate Number

07 21994

Page

1

END CERTIFICATE

ANALYST

B

APPENDIX 4

OLD ASSAY DOCUMENTS

TERRITORIAL GOVERNMENT ASSAY OFFICE

Keno Hill Y. T. 16th Aug. 1937.

Mr. M. Watson

Jeanne M. C.

Carcross, Y.T.

MARK ON SAMPLE	GOLD @\$35		SILVER @45¢		Total Value Per Ton Gold and Silver	PERCENTAGE OF			
	Ozs. Per Ton	Value Per Ton	Ozs. Per Ton	Value Per Ton		Copper	Iron	Lead	Zinc
1.	16.0	560.00	12.8	5.76	565.76				

W. L. Stone
TERRITORIAL ASSAYER

TERRITORIAL GOVERNMENT ASSAY OFFICE

Keno Hill _____ Y. T. 10th Nov. 1937.

Mr. Matthew Watson

Carcross, Y.T.

MARK ON SAMPLE	GOLD @\$35		SILVER @45¢		Total Value Per Ton Gold and Silver	PERCENTAGE OF			
	Ozs. Per Ton	Value Per Ton	Ozs. Per Ton	Value Per Ton		Copper	Iron	Lead	Zinc
#2.	8.0	280.00	6.3	2.83	282.83				

W. C. Stone

TERRITORIAL ASSAYER

TERRITORIAL GOVERNMENT ASSAY OFFICE

Keno Hill Y. T. 22nd Aug. 1938.

Mr. M. Watson

Carcross, Y.T.

Jean Miles

MARK ON SAMPLE	GOLD @ \$35		SILVER @ 43¢		Total Value Per Ton Gold and Silver	PERCENTAGE OF				
	Ozs. Per Ton	Value Per Ton	Ozs. Per Ton	Value Per Ton		Copper	Iron	Lead	Zinc	
1.	0.1	3.50	2.4	1.03	4.53	2ft 2ft	70 wt wall 4ft			
2.	3.0	105.00	6.0	2.58	107.58					

W. L. Stone
TERRITORIAL ASSAYER

File No. 28641

CABLE ADDRESS: "ELDRICO"

HEAD OFFICE AND LABORATORIES:
567 HORNBY STREET
VANCOUVER, B.C.

PHONE SEYMOUR 4125

Certificate of Assay

G. S. ELDRIDGE & CO.

PROVINCIAL ASSAYERS, ANALYTICAL AND CONSULTING CHEMISTS
METALLURGICAL AND CEMENT INSPECTORS

G. S. ELDRIDGE, B.Sc.
PROVINCIAL ASSAYER
MEMBER OF
CANADIAN INSTITUTE OF CHEMISTRY
CANADIAN INSTITUTE OF MINING AND METALLURGY
SOCIETY CHEMICAL INDUSTRY, ENGLAND
AMERICAN SOCIETY FOR TESTING MATERIALS
AMERICAN CHEMICAL SOCIETY

We hereby Certify that the following are the results of assays made by us upon samples of ORE
herein described and received from Mr. Matthew Watson April 25, 1939

MARKED	GOLD		SILVER		PER CENT.		VALUE PER TON		TOTAL VALUE PER TON (2000 LBS.)	
	OUNCES PER TON	VALUE PER TON	OUNCES PER TON	VALUE PER TON	PER CENT.	VALUE PER TON	PER CENT.	VALUE PER TON	PER CENT.	VALUE PER TON
	0.49	17.15	0.58	0.25						17.40

From Cut

Gold calculated at \$ 35.00 per ounce.

Silver calculated at 43¢ per ounce.

Calculated at _____ cents per lb.

Calculated at _____ cents per lb.

NOTE.—Samples only retained 3 months unless otherwise specified.

G. S. Eldridge Provincial Assayer

TERRITORIAL GOVERNMENT ASSAY OFFICE

Keno Hill, Y. T. Sept. 9/39.

Mr. Matthew Watson,

Carcross, Y.T..

MARK ON SAMPLE	GOLD		SILVER		Total Value Per Ton Gold and Silver	PERCENTAGE OF			
	Ozs. Per Ton	Value Per Ton	Ozs. Per Ton	Value Per Ton		Copper	Iron	Lead	Zinc
# 1	0.49	17.15	1.0	0.35	\$ 17.50	<i>Shully</i>			
2	0.03	1.05	0.6	0.21	1.26	<i>Kodak</i>			
3	0.04	1.40	0.5	0.17	1.57	<i>3 ft</i>			
4	1.44	50.40	0.8	0.28	50.68	<i>2 ft</i>			

J.O. Reed
Acting TERRITORIAL ASSAYER

TERRITORIAL GOVERNMENT ASSAY OFFICE

Keno Hill Y.T., 24th Oct. 1948.

MR. Matthew Watson

Carcross, Y.T.

MARK ON SAMPLE	GOLD @ 35		SILVER @ 35¢		Total Value Per Ton Gold and Silver	PERCENTAGE OF			
	Ozs. Per Ton	Value Per Ton	Ozs. Per Ton	Value Per Ton		Copper	Iron	Lead	Zinc
1.	0.1	3.50	1.9	0.66	4.16	<i>assayed</i>	<i>at</i>		
2.	2.6	91.00	9.4	3.29	94.29	<i>assayed</i>	<i>at</i>		
3.	Nil	---	6.0	2.10	2.10	<i>assayed</i>	<i>at</i>		

W. L. ...
TERRITORIAL ASSAYER

TERRITORIAL GOVERNMENT ASSAY OFFICE

Reno Hill Y.T., 15th Sept. 1941.

MR. W. Watson

Carcross, Y.T.

MARK ON SAMPLE	GOLD @ 35		SILVER @ 35¢		Total Value Per Ton Gold and Silver	PERCENTAGE OF			
	Ozs. Per Ton	Value Per Ton	Ozs. Per Ton	Value Per Ton		Copper	Iron	Lead	Zinc
1.	9.0	315.00	30.0	10.50	325.50				
2.	6.4	224.00	13.6	4.76	228.76				
3.	13.2	462.00	16.8	5.88	467.88				

From list

W. C. Lane

TERRITORIAL ASSAYER

TERRITORIAL GOVERNMENT ASSAY OFFICE

Keno Hill Y.T., 2nd Sept. 1944.

MR. M. Watson

Carcross, Y.T.

MARKON SAMPLE	GOLD @\$35		SILVER @45¢		Total Value Per Ton Gold and Silver	PERCENTAGE OF			
	Ozs. Per Ton	Value Per Ton	Ozs. Per Ton	Value Per Ton		Copper	Iron	Lead	Zinc
1.	Trace	---	4.0	1.80	1.80				
2.	0.10	3.50	0.90	0.40	3.90				
3.	0.20	7.00	2.80	1.26	8.26				

Aug 14/44

W. B. Lane
TERRITORIAL ASSAYER

Low. vein at Kodak
Big vein east of ridge at Hazel
Py cut on Belagira extension

TERRITORIAL GOVERNMENT ASSAY OFFICE

Kenø Hill Y.T., 14th Sept. 1944.

MR. M. Watson

Carcross, Y.T.

MARK ON SAMPLE	GOLD @\$35		SILVER @45¢		Total Value Per Ton Gold and Silver	PERCENTAGE OF			
	Ozs. Per Ton	Value Per Ton	Ozs. Per Ton	Value Per Ton		Copper	Iron	Lead	Zinc
1.	Trace	---	6.0	2.70	2.70	<i>Lower Belozera shown</i>			
2.	Nil	---	Nil	---	---	<i>upper ✓ ✓</i>			
3.	0.20	7.00	0.30	0.13	7.13	<i>Clearer</i>			
			<i>July - 1944</i>						


 TERRITORIAL ASSAYER

FILE No. 8101

CABLE Address: "ELDRICO"

HEAD OFFICE AND LABORATORIES:
VANCOUVER, B. C.

PHONE TATLOW 1267

Provincial Assayer

G. S. ELDRIDGE, B.Sc.
MEMBER OF
CHEMICAL INSTITUTE OF CANADA
CANADIAN INSTITUTE OF MINING AND
METALLURGY
AMERICAN SOCIETY FOR TESTING
MATERIALS
AMERICAN CHEMICAL SOCIETY
AMERICAN SOCIETY OF METALS

G. S. ELDRIDGE & CO. LTD.

We Hereby Certify that the following are the results of assays made by us upon samples of ORE
herein described and received from Mr. M. Watson August 9, 1949

MARKED	GOLD		SILVER		Lead				TOTAL VALUE
	OUNCES PER TON	VALUE PER TON	OUNCES PER TON	VALUE PER TON	PER CENT.	VALUE PER TON	PER CENT.	VALUE PER TON	PER TON (2000 LBS.)
	3.64	127.40	9.5	6.74	5.1	14.28			148.42

Handwritten scribbles in the Gold column.

2M-7-49, M.P.

Gold identified at 35.00
Silver identified at 71¢

Lead 14

NOTE.—Samples only retained 3 months unless otherwise specified.

G. S. Eldridge Provincial Assayer

TERRITORIAL GOVERNMENT ASSAY OFFICE

Keno Hill Y. T. 4th Oct. 1949.

Mr. Matthew Watson

Carcross, Y.T.

MARK ON SAMPLE	GOLD @ \$35		SILVER @ 70¢		Total Value Per Ton Gold and Silver	PERCENTAGE OF			
	Ozs. Per Ton	Value Per Ton	Ozs. Per Ton	Value Per Ton		Copper	Iron	Lead	Zinc
Fines. <i>secured from panning</i>	7.0	245.00	15.0	10.50	255.50				


 TERRITORIAL ASSAYER

FILE NO. 9233

CABLE ADDRESS: "ELDRICO"

HEAD OFFICE AND LABORATORIES:
633 HORNBY STREET
VANCOUVER 1, B.C.

PHONE TATLOW 1267

G. S. ELDRIDGE & CO. LTD.

G. S. ELDRIDGE, B.Sc
MEMBER OF
CHEMICAL INSTITUTE OF CANADA
CANADIAN INSTITUTE OF MINING AND
METALLURGY
AMERICAN SOCIETY FOR TESTING
MATERIALS
AMERICAN CHEMICAL SOCIETY
AMERICAN SOCIETY OF METALS

We Hereby Certify that the following are the results of assays made by us upon samples of ORE
herein described and received from Mr. Matthew Watson August 1, 1953

MARKED	GOLD		SILVER		Lead		Zinc		Copper	TOTAL VALUE PER TON (2000 LBS.)
	OUNCES PER TON	VALUE PER TON	OUNCES PER TON	VALUE PER TON	PER CENT.	VALUE PER TON	PER CENT.	VALUE PER TON	% VALUE PER TON	
Sample brought in by Mr. Bill Watson	3.68	128.80	20.1	17.08	10.6	27.56	6.5	15.60	Trace	189.04

3M-MP-153

35.00

Lead

13

85%

Zinc

12

NOTE.—Samples only retained 3 months unless otherwise specified G. S. Eldridge Provincial Assayer

FILE NO. 15855

CABLE ADDRESS: "ELDRICO"

HEAD OFFICE AND LABORATORIES:
633 HORNBY STREET
VANCOUVER 1, B.C.

PHONE TATLOW 1267

Certificate of Assay

G. S. ELDRIDGE & CO. LTD.

PROVINCIAL ASSAYERS, ANALYTICAL AND CONSULTING CHEMISTS
METALLURGICAL AND CEMENT INSPECTORS

G. S. ELDRIDGE, B.Sc.
MEMBER OF
CHEMICAL INSTITUTE OF CANADA
CANADIAN INSTITUTE OF MINING AND
METALLURGY
AMERICAN SOCIETY FOR TESTING
MATERIALS
AMERICAN CHEMICAL SOCIETY
AMERICAN SOCIETY OF METALS

We hereby Certify that the following are the results of assays made by us upon samples of ORE
herein described and received from NORTHWESTERN EXPLORATION LTD. September 9 19 55

MARKED	GOLD		SILVER		PER CENT.	VALUE PER TON	PER CENT.	VALUE PER TON	TOTAL VAL PER TON (2000 LBS.)
	OUNCES PER TON	VALUE PER TON	OUNCES PER TON	VALUE PER TON					
K - 8251	2.80	98.00	4.4	JEAN GROUP - composite chip sample main trench; across 110' vein at various pos. along vein.					
K - 8252	0.72	25.20	39.4	BIG THING - incline dump - grab sample of best mineralization seen.					
K - 8253	0.08	2.80	1.0	JEAN GROUP - trench # 2 - grab of mineralized quartz (covered)					
K - 8254	2.00	70.00	33.7	BIG THING - adit dump - grab sample of best mineralization.					
K - 8255	12.40	434.00	24.6	JEAN GROUP - Picked sample of high grade [for Au-Ag ratio]					
	5) 18.00		5) 1031						
	3.60		206						

Gold calculated at \$ 35.00 per ounce.

Silver calculated at _____ per ounce.

Calculated at _____ cents per lb.

Calculated at _____ cents per lb.

NOTE:—Samples only retained 3 months unless otherwise specified

G. S. Eldridge

ASSAY CERTIFICATE

THE CONSOLIDATED MINING AND SMELTING COMPANY OF CANADA LIMITED

Mines Division

TADANAC, BRITISH COLUMBIA.....

October 4, 1955

DESCRIPTION	LOT	MOISTURE PER CENT	GOLD OZ. PER TON	SILVER OZ. PER TON	COPPER WEY PER CENT	LEAD WEY PER CENT	ZINC PER CENT	SULPHUR PER CENT	INSOLUBLE PER CENT	SILICA PER CENT	IRON PER CENT	LINE PER CENT				
<i>Watson</i>	<i>21788</i>		<i>.33</i>	<i>.7</i>		<i>.5</i>										
	<i>21789</i>		<i>.12</i>	<i>.3</i>		<i>TR</i>										
	<i>21790</i>		<i>.08</i>	<i>.2</i>		<i>TR</i>										
	<i>21791</i>		<i>.06</i>	<i>.2</i>		<i>TR</i>										
	<i>21792</i>		<i>2.16</i>	<i>5.3</i>		<i>2.6</i>	<i>2.4</i>									
	<i>21793</i>		<i>24.72</i>	<i>24.5</i>		<i>4.7</i>	<i>2.4</i>									
	<i>21794</i>		<i>4.37</i>	<i>5.8</i>		<i>1.8</i>										
	<i>21795</i>		<i>1.65</i>	<i>.8</i>		<i>.3</i>										
	<i>21796</i>		<i>.21</i>	<i>.6</i>		<i>.2</i>										
	<i>21797</i>		<i>.18</i>	<i>.4</i>		<i>TR</i>										

SERIAL NO.

4385

33.88 3.88

J. Morris
9/13
SUPERVISOR

FILE NO. 85-6
 DATE: Aug. 22 1956

ASSAY CERTIFICATE
 WHITEHORSE, Y.T. ASSAY OFFICE

RECEIVED FROM Northwestern Explorations Ltd.,

SAMPLE No.	GOLD OZ. PER TON	SILVER OZ. PER TON						
8281	.30	.36	1' channel from bottom of exposure in main trench					
8282	.80	1.28	1.2' channel 10' from bottom of exposure - part of trench					
8283	1.42	1.90	0.25 feet channel - little sulphide - 21.5' from bottom					
8284	.43	2.00	0.7 feet - partly hard quartz, partly partially red - 2' S of trench					
8285	2.74	8.26	0.75 feet - hard quartz - much sulphide - 5' from bottom					
8286	4.23	5.04	0.1 feet - representative grab of material 7' 5" from bottom (49.6 grams)					
			<p>(average) 1.30 oz gold over 0.27 feet 2.02 oz silver over 0.27 feet</p>					

ASSAYER Geo. Spence