

062136

DRILLING REPORT ON THE
HOWARDS PASS PROPERTY
N.W.T.

MINING LEASE 2878
BY PLACER DEVELOPMENT LIMITED

NAHANNI MINING DIVISION

62°28'N
N.T.S.

129°10'W
105-I-6

August 22nd - September 11th, 1981

BY: P. Pacor

This report has been examined; de-
clared acceptable as Representation
Work under Section 32 and Schedule
B of the Canada Mining Regulations
and valued in the amount of \$ 77,798.35

for Chief, *J.H. Laine*

Date: *Sept. 1, 1982*

February, 1982

TABLE OF CONTENTS

	<u>Page</u>
Introduction	1
Location	1
Topography and Climate	1
Access	1
History	1
Regional Geology	2
1981 Drill Program	2
Results	2
Conclusions	3
Summary of Costs	4
Statement of Qualifications	5

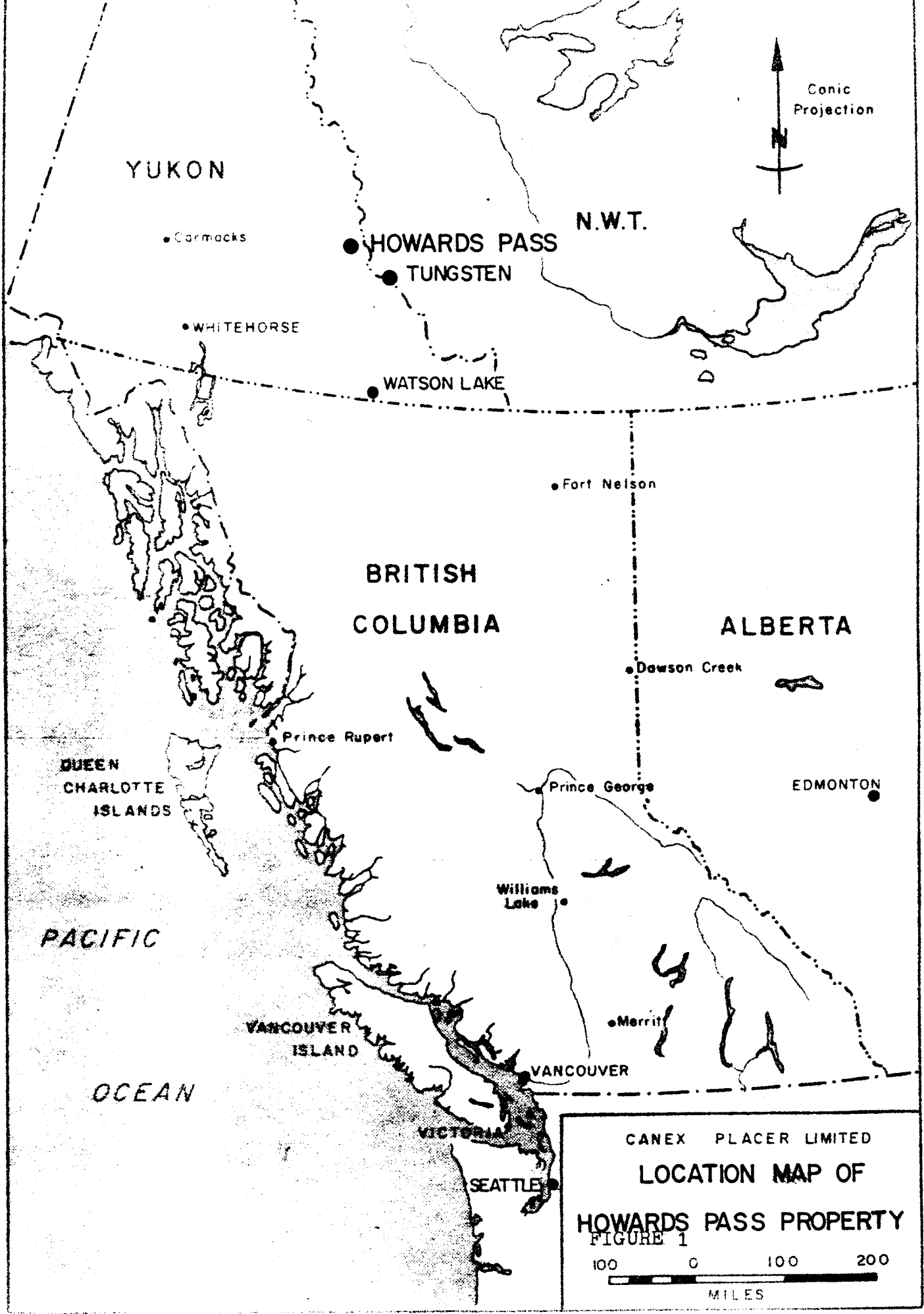
Figures

Figure - 1	Location Map of Howards Pass Property
Figure - 2	Howards Pass Claim Map
Figure - 3	Drill Hole Locations
Figure - 4	Stratigraphic Section of the Howards Pass Formation
Figure - 5	Stratigraphic Section of the Active Member

Table 1	Property Rock Units
---------	---------------------

Appendix

Diamond Drill Logs (DDH-100 to DDH-103)



YUKON

• Carmacks

• HOWARDS PASS

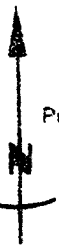
• TUNGSTEN

N.W.T.

• WHITEHORSE

• WATSON LAKE

Conic Projection



• Fort Nelson

BRITISH COLUMBIA

ALBERTA

• Dawson Creek

• Prince Rupert

QUEEN CHARLOTTE ISLANDS

• Prince George

• EDMONTON

• Williams Lake

PACIFIC OCEAN

• Merritt

VANCOUVER ISLAND

• VANCOUVER

OCEAN

• VICTORIA

• SEATTLE

CANEX PLACER LIMITED

LOCATION MAP OF

HOWARDS PASS PROPERTY

FIGURE 1

100 0 100 200

MILES

INTRODUCTION

Location

The Howards Pass area is located along the Yukon - Northwest Territories border approximately 50 miles northwest of Cantung (Tungsten) N.W.T. (see Figure 1). The diamond drilling was done in the N.W.T. on Mining Lease #2878 (See Figure 2).

Topography and Climate

The topography ranges from broad glaciated valleys to sharp alpine type peaks. Elevations range from approximately 3,600 feet to about 6,514 feet on Yara Peak. Major valleys are wide and U-shaped, while many of the peaks are barren, glaciated and alpine in nature. The area of work is above the 4,700 foot tree line in the region.

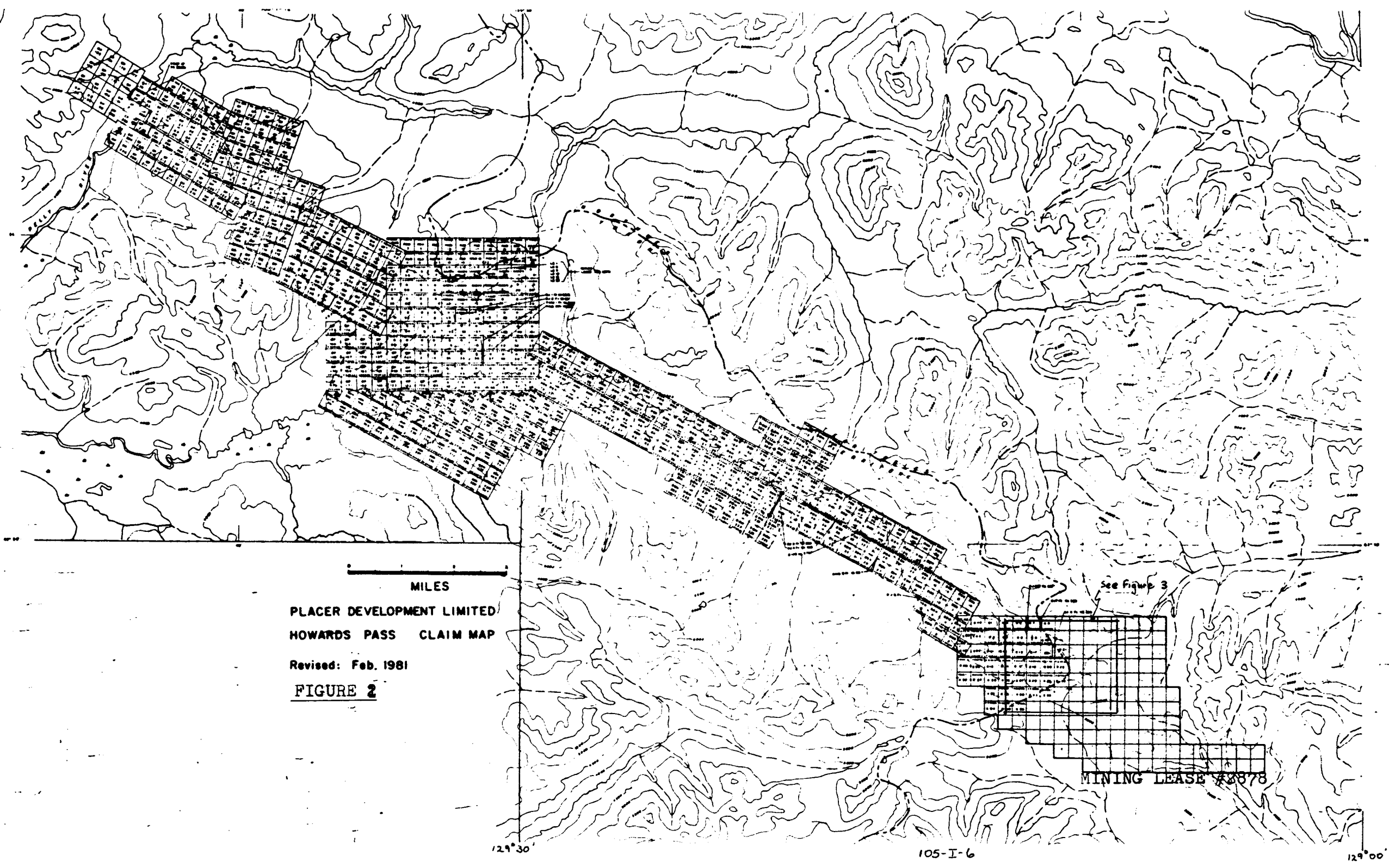
The climate in the area is typical for this region - wet, cool summers and cold winters.

Access

Access is primarily by air using the 2,200 foot airstrip located on the Yukon - N.W.T. border (see Figure 3). A fifty mile winter access road has been constructed from the Nahanni Range Road approximately 6 miles north of Cantung through the N.W.T. to Howards Pass. This is used to haul heavy equipment and supplies in late fall.

History

The Howards Pass Zn-Pb deposits were discovered by Canex Placer personnel in 1972 following several years of regional stream sediment geochemical sampling. Staking commenced in 1972 over the geochemically anomalous areas, sulphide showings were subsequently discovered by prospecting. Drilling was started in 1973 and continued to the present although the majority was done in the Yukon.



PLACER DEVELOPMENT LIMITED
HOWARDS PASS CLAIM MAP

Revised: Feb. 1981

FIGURE 2

MINING LEASE #3878

See Figure 3

MILES

129°30'

105-I-6

129°00'

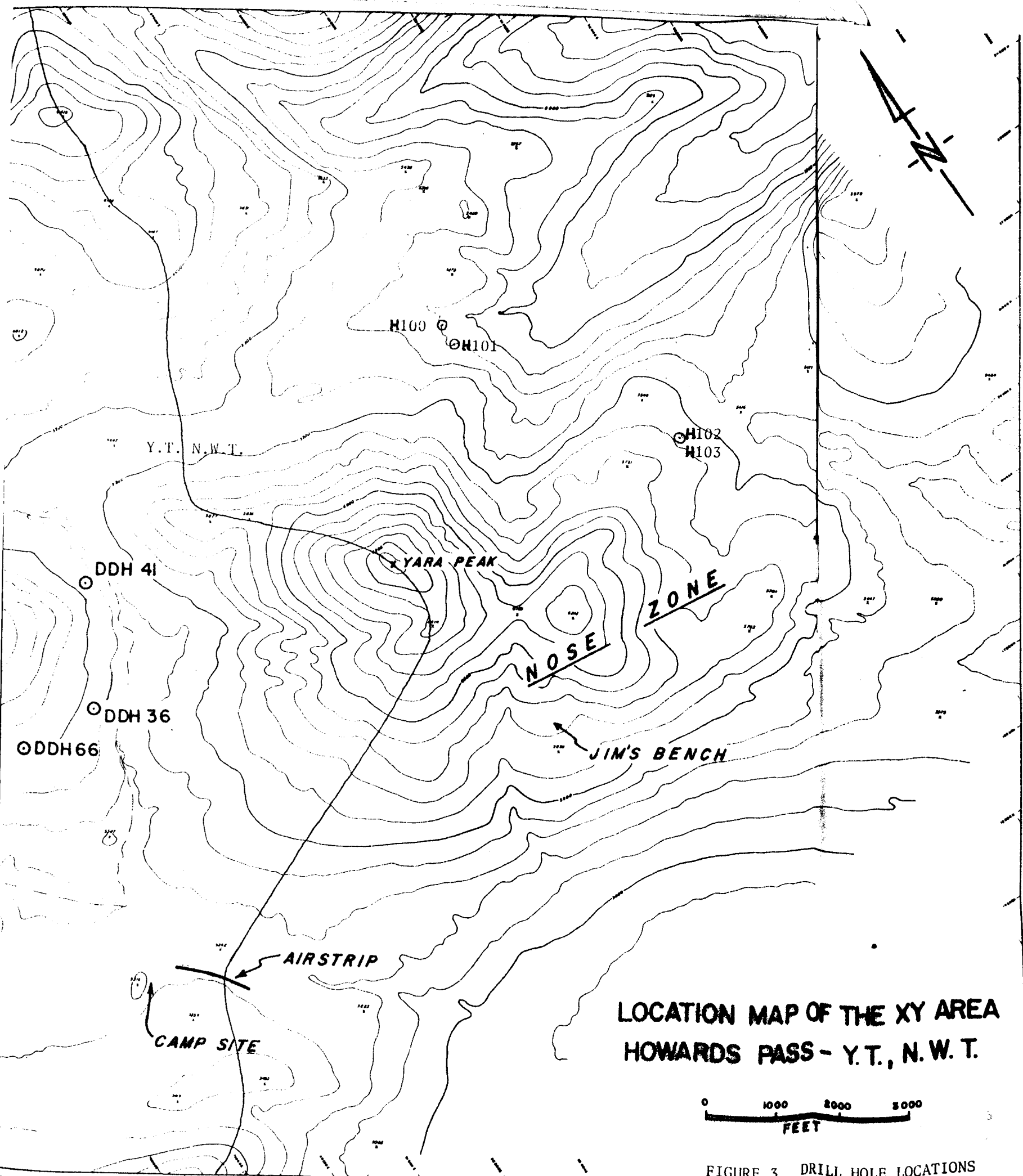


FIGURE 3. DRILL HOLE LOCATIONS

Regional Geology

The Howards Pass Zn-Pb deposits occur in the Lower Paleozoic basinal facies of the Selwyn Basin in the Northern Canadian Cordillera within the Yukon and Western Northwest Territories. The Selwyn Basin has been defined as a major Paleozoic tectonostratigraphic feature to the east of the Tintina Trench and consists of unmetamorphosed pelites and limestones ranging in age from Cambrian to Mississippian (see Table 1).

1981 Drill Program

Between August 22nd and September 11th, 1981 a total of 1,734 feet (525.45 meters) of NQ diamond drilling in four holes was done on Mining Lease #2878 (see Figure for locations).

<u>DDH No.</u>	<u>Total Length</u>	<u>Dip</u>	<u>Azimuth</u>
H-100	528 feet (160 m)	-80 ^o	030
H-101	559 feet (169.39 m)	-80 ^o	030
H-102	169 feet (51.21 m)	-80 ^o	030
H-103	478 feet (144.85 m)	-75 ^o	030

The drilling was done by Caron Diamond Drill Company of Whitehorse, Yukon who supplied drill, rods and personnel, while Placer Development Limited supplied fuel, core boxes, camp and supervision.

Results

The objective of the 1981 drill program was to drill a number of holes to determine the location and content of the mineralized unit, locally named the Active Member (see Figures 4 and 5). Previous work including mapping and drilling has shown this area to contain the stratigraphy (see Figure 4) favourable for Zn-Pb mineralization.

Drill holes H-100 and H-101, located approximately 600 feet apart, intersected the Active Member. Hole H-102 located on Yara Peak had to be abandoned before hitting the mineralization due to bad ground. A new hole H-103 was drilled on the same location which did intersect the Active Member.

The stratigraphy intersected by all the drill holes in this drill program was the same as that encountered in drilling on other areas of the property. Although the Active Member, which contains all the Pb-Zn mineralization, was present in the core, assay results show relatively low values.

Conclusions

This drill program put down four relatively wide spaced drill holes to find a large area of economic grade Zinc and Lead. From the hole spacing and the assay results it would seem that this area has a low priority for any future work.

All core was taken to camp for logging, splitting and storage. Samples were shipped to Placer Development Limiteds' Laboratory in Vancouver, B.C. for assaying.

Logs with assay results,
report.

are supplied in the

PERCY PACOR

Percy Pacor

Summary of Costs

V-140 Howards Pass
Statement of Costs
Period - August 22 - Sept. 11, 1981

Labour Cost

P. Pacor (Geologist)	August 22 - September 11th, 1981 21 days @ \$200/day	\$4,200.00
----------------------	---	------------

Operating Cost

Camp Room & Board	4 drillers for 21 days @ \$32.15 per man day	\$2,700.60
-------------------	---	------------

Helicopter Cost		13,770.00
-----------------	--	-----------

Drilling Costs

Core Boxes	94 NQ core boxes at \$4.45 each	\$ 418.30
Assay Costs	80 samples - sample preparation - lead & zinc assay \$9.00 each per sample	1,440.00
Drilling Costs	As per Caron billing 1981	\$55,269.45

\$77,798.35

STATEMENT OF QUALIFICATIONS

I, P. Pacor, with a business address of 1600-1055 Dunsmuir Street, Vancouver, B.C., do hereby certify that I have assessed and interpreted the data from the diamond drilling performed at Howards Pass.

I also certify that:

1. I am a graduate of the University of British Columbia, Vancouver (B.Sc., Geological Sciences, 1978).
2. I have engaged in mineral exploration seasonally since 1976, in British Columbia, Yukon Territory and the Northwest Territories.
3. I supervised the diamond drilling at Howards Pass in 1981.

Respectfully submitted,

PLACER DEVELOPMENT LIMITED

A handwritten signature in cursive script that reads "Percy Pacor".

Percy Pacor

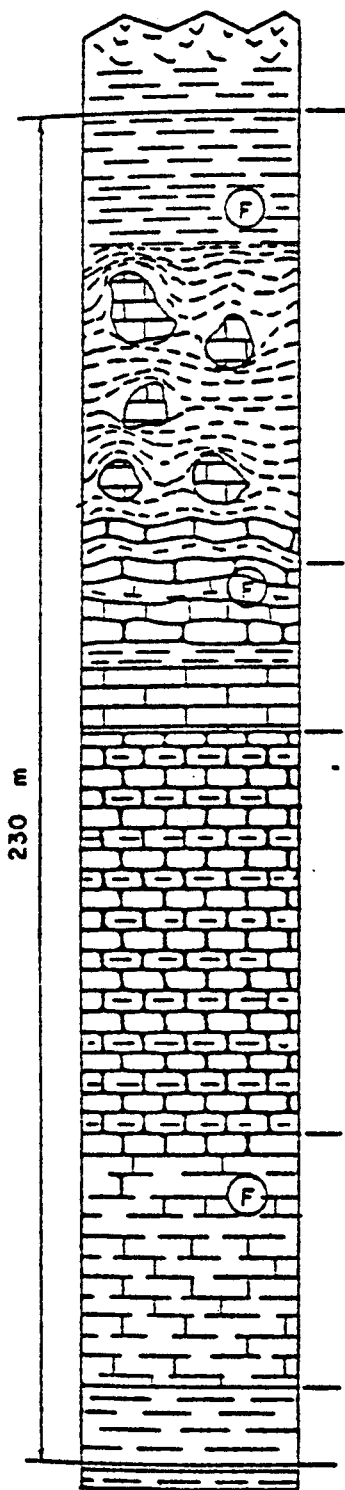
PP/cs

References

- Morganti, J.M., (1979) The Geology and Ore Deposits of the Howards Pass Area.
Yukon and Northwest Territories.
PhD. Thesis U.B.C., 1979.

PERIOD	Based on major units proposed by Green et al.	This report - local informal usage (Morganti, 1975)	Regional units which correlate with the local section, some of which meet group requirements
PENNSYLVANIAN			
MISSISSIPPIAN			
	18b-3	CHERT PEBBLE CONGLOMERATE	
	18b-2	YARA PEAK FORMATION	
	18b-1	IRON CREEK FORMATION	EARN GROUP
DEVONIAN	10c	UPPER CHERT FORMATION	
	10b	FLAGGY MUDSTONE FORMATION	
SILURIAN			ROAD RIVER FORMATION (GROUP)
	10a	HOWARDS PASS FORMATION	
ORDOVICIAN			
	7b-3	TRANSITION FORMATION	
	7b-2	WAVY BANDED LIMESTONE FORMATION	
	7b-1	MASSIVE LIMESTONE FORMATION	RABBITKETTLE FORMATION (GROUP)
CAMBRIAN	7a	LOWER SILTSTONE UNIT	SEKWI FORMATION
HADRYNIAN	2	'GRIT UNIT'	'GRIT UNIT'

TABLE 1.



10b (flaggy mudstone formation)

10a-5 (upper siliceous mudstone member) - laminated, siliceous carbonaceous mudstone with abundant limestone concretions, and a graptolite zone 1 m thick occurring near the top of the member.

10a-4 (active member) - intercalated mudstone, limestone and chert with economically significant amounts of Zn and Pb with a poorly preserved graptolite horizon.

10a-3 (lower cherty mudstone member) - massive, carbonaceous siliceous mudstone with blocky fracture and up to 12% C_(org).

10a-2 (calcareous mudstone member) - calcareous carbonaceous mudstone with 0.2 m graptolite zone.

10a-1 (pyritic siliceous shale) - siliceous carbonaceous fissile shale with common pyrite concretions.

7b-3 (transition formation)

Figure 4. Composite stratigraphic section of the Howards Pass formation showing the various members. Numbers refer to Geological Survey of Canada nomenclature (Green et al., 1967).

(From Morganti, 1979)

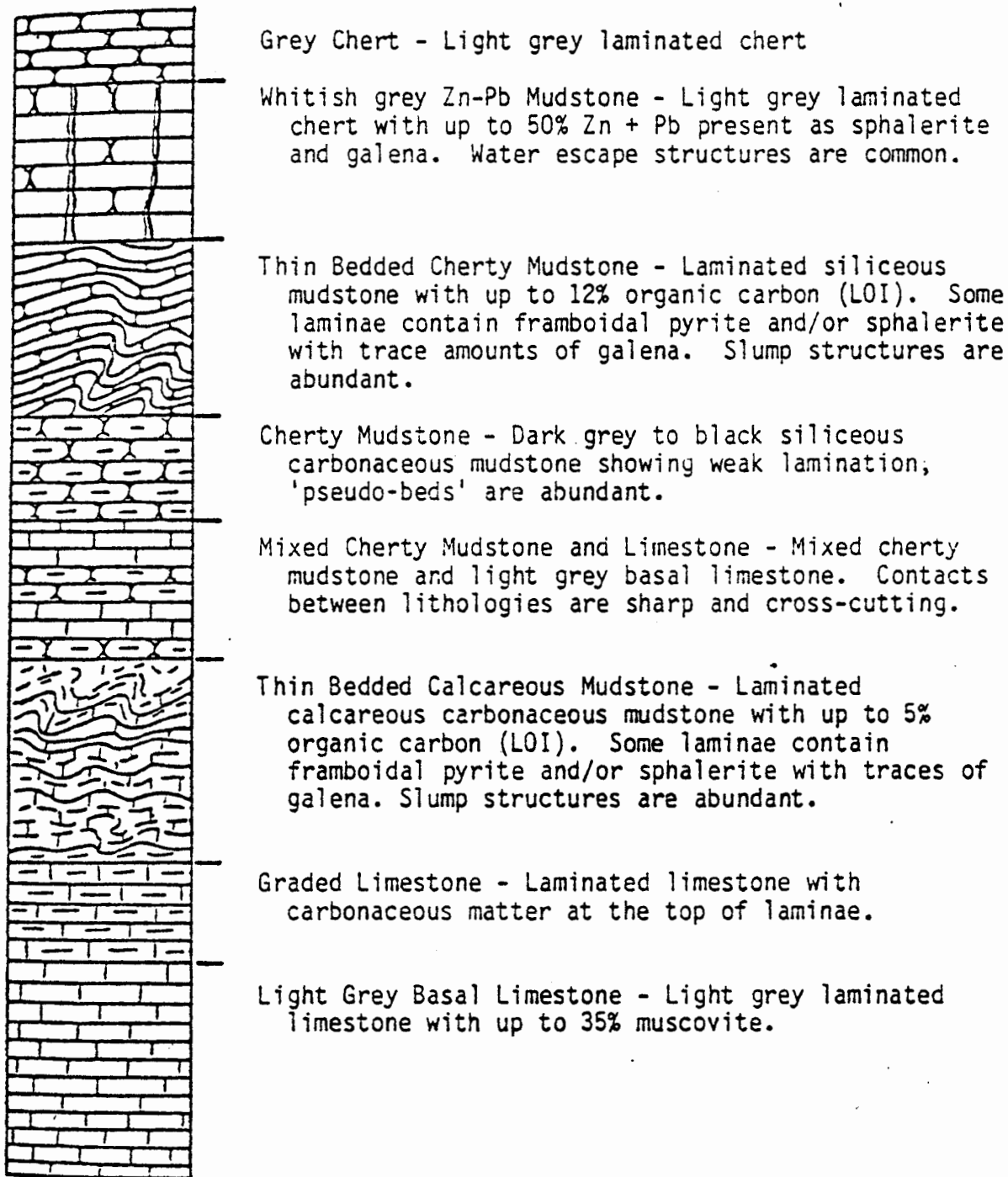


Figure 5. Stratigraphic column showing an ideal cycle within the active member, with the eight cyclical facies noted in the member identified by local informal name. No scale implied.

(From Morganti, 1979)

N.I.S. MAP GRID: 105 I 6

LOCATION: KUWALCHUK CANYON

DATE COLLARED: Aug. 22nd 81

DATE COMPLETED: _____

BEARING: N30E

LENGTH: 528'

DIP: -80°

LATITUDE: _____

DEPARTURE: _____

ELEVATION: _____

PROPERTY: HOWARDS PASS

CORE SIZE: NQ

SCALE OF LOG: 1"=10'

HOLE No.: 00H-100

SHEET No.: 1 of 8

LOGGED BY: P.P.

DATE: Aug 27th 81

BOX 1
BOX 2
BOX 3

ROCK TYPE AND TEXTURES	Carb. (3)	Carbonate %	Silica - Ind (3)	Contacts	Veins	Faults	Bedding	Cleavage	GRAPHIC LOG Rock Type Structure Footage	MINERALIZATION	SULPHIDE	Est. Grade	REMARKS	FOOTAGE BLOCKS	EST. CORE REC.	COMPOSITES	ASSAY					
																	SAMPLE No.	Pb	Zn	Ag	Pb + Zn	Zn/Pb RATIO
CASING TO 10'									10													
FMS LIGHT GREY TO BLACK CARB. ROCK. CONTAINS BLACK CARB. CLASTS. CUT BY CLEAVAGE 20% 40% DARK CLASTS	1	TR	1				15	10	10-20	TR PY IN BLEBS DISS. PY IN LAMEN.			BROKEN ROCK	15 16	50%							
SAME AS ABOVE 20% DARK CLASTS	1	TR	1				20	15	20-30	TR PY IN POOLS AND BLEBS DISSER PY IN CLASTS AND IN BLACK CARB. RECH CLASTS.				23 26	65% 75%							
SAME AS ABOVE 20% DARK CLASTS	1	TR	1				20	20 X (70)	30-40	↓ PY UP TO 1-5% IN PLACES PY POOS WITH CU ₂ HALOS.			RECOVERY IMPROVING. CLEAVAGE OCCASIONALLY UP TO 70°	31 37	90% 80%							
20-40% DARK CLASTS OCCASIONAL WORM BURROW	1 1/2	TR	1				30	5	40-50	↓				42 44	95% 95%							
40% DARK CLASTS	1 1/2	TR	1				30	5 X	50-60	↓ OCC. FRAGMENTS OF DISS. PY				53 57	95% 90%							

ROCK TYPE AND TEXTURES	CARB. (3)			CONTACTS	VEINS	FAULTS	BEDDING	CLEAVAGE	GRAPHIC LOG			SULPHIDE MINERALIZATION	EST. GRADE	REMARKS	FOOTAGE BLOCKS	EST. CORE REC.	COMPOSITES	ASSAY							
	Carb. (%)	Carbonate %	Silica - Ind. (3)						Rock Type Structure	Footage	Mineralization Type (6)							SAMPLE No.	Pb	Zn	Ag	Pb + Zn	Zn/Pb RATIO		
FMS. SAME AS ABOVE 50% DARK CLASTS.	1 1/2	0 TR	<1				40	S X				TR TO 218 PY IN BLEBS AND PODS WITH CO ₂		SECTIONS TO CARB INTERBED	65	90%									
40-60% DARK CLASTS	1 1/2	0	<1				50	S X				EXSS. PY. 1-2 IN PLACES.			70	85%									
															71	75%									
															73	50%									
															77	75%									
															79	80%									
40-60% DARK CLASTS	1 1/2	TR	<1			7	S	S					SECOZONE CUT BY CLEAVAGE												
																							82	60%	
																							84	85%	
40-60% DARK CLASTS	1 1/2	TR	<1			7	S	S																	
																							87	50%	
																							91	75%	
																							92	75%	
40-60% DARK CLASTS	1 1/2	TR	<1			30	S	S				76-92 PY PODS WITH CO ₂ HALOS													
																							95	50%	
																							99	80%	
40% DARK CLASTS	1 1/2	TR	<1			30	S	S					104-104.5. CO ₂ VEINS WITH PY PODS AND FRAG.												
																							103	80%	
																							107	80%	
																							109	50%	
114-118' 20-30% DARK CLASTS 118-120' BLACK CARB. ROCK. SLIGHTLY CALC.	1 1/2	TR	<1			40	S	S				TR PY													
																								110	50%
120'-122' 30% DARK CLASTS 122'-126' BLACK CARB. MUDSTONE SLIGHTLY CALC. TRANS. TO USMS	1 1/2	TR	<1			40	S	S																	
																								115	65%
USMS. 126' BLACK HEAVY CARB. MUDSTONE WITH CHERT LAMIN AND CLASTS.	2-3	1-2	<1			45	S	S				TR PY IN BLEBS. PY IN PODS WITH CO ₂ OR CO ₂ VEINS													
																								121	85%
																								127	80%

BOX 4
 BOX 5
 BOX 6
 BOX 7

ROCK TYPE AND TEXTURES	Carb. (3)			Contacts	Veins	Faults	Bedding	Cleavage	GRAPHIC LOG Rock Type Structure	Footage	Mineralization Type (6)	SULPHIDE MINERALIZATION	Est. Grade	REMARKS	FOOTAGE BLOCKS	EST. CORE REC.	COMPOSITES	ASSAY				
	Carbonate %	Silica - Ind. (3)																SAMPLE No.	Pb	Zn	Ag	Pb + Zn
USMS BLACK CARB. MUDSTONE 137.5' - 141' CO ₂ -OFE VEINS AND VEIN LETS ROCK FRAC	3	52	41									TR. PY.			133	70%						
										140					137	80%						
USMS 142' CHERT LAM. AND CLASTS VISIBLE	3	0-5%	PT				35	?														
							40			150		TR PY IN SMALL BLEBS AND POOS CO ₂ HALOS ALSO IN DISCONTINUOUS LAMS AND CLASTS			147	80%						
USMS	3	0-1%	2-3				25	AS														
										160					157	80%						
USMS	3	0-1%	2-3				55	20														
										170					161	50%						
USMS	3	0-1%	3				35	?														
										180					173	40%						
USMS SECTIONS OF CONTORTED BEDDING 185-188.5' 1ST CONC	3	0-1%	3				50	?														
										190					176	75%						
															183	75%						
										198					186	60%						
USMS	3	0-1%	3				50															
							70	?		200					187	60%						
															189	70%						
															194	50%						
															200	50%						

ROCK TYPE AND TEXTURES	Carb. (3)	Carbonate %	Silica - Ind. (3)	Contacts	Veins	Faults	Bedding	Cleavage	GRAPHIC LOG Rock Type Structure Footage Mineralization Type (6)	SULPHIDE MINERALIZATION	Est. Grade	REMARKS	FOOTAGE BLOCKS	EST. CORE REC.	COMPOSITES	ASSAY				
																SAMPLE No.	Pb	Zn	Ag	Pb + Zn
USMS BLACK CARB. SIL. MUDSTONE WITH BLACK CHERT LAM. AND CLASTS 200-200.5' FINE GRAINED LST CONC WITH PY HALO	3	0-TR	3				50	?	210	PI IN SMALL BUBBLES AND PODS WITH CO ₂ HALOS.		SMALL SECTIONS OF CONFORMED BEDDING MOSTLY PARALLEL BEDDING OR MASSIVE	205	75%						
USMS 213.5-214.5. LST CONC.	3	0-TR	3				50	?	220				211	80%						
USMS 222' 5" LST CONC. WITH PY HALO ELONGATED INTO CLEAVAGE	3	0-TR	3				55	20	230				217	80%						
USMS 229' 3" LST CONC.	3	0-TR	3				55	20	230				221	80%						
USMS 238' 4" LST CONC. CR. CR.	3	0-TR	3				40		240				226	80%						
USMS 243.4-244.6' LST CONC. COARSE GRAINED, PY HALO 245.5' - 4" LST CONC. " " " 247.5' - 2" LST CLAST (CONG) FINE GRAINED 248.5' - 8" LST CONC. MED. GRAINED.	3	0-TR	3				45	50	250				231	60%						
USMS 251-252.5' LST CONC. COARSE GRAINED	3	0-TR	3				50	50	250				235	50%						
USMS 254.5-260.5 LST CONC.	3	0-TR	3				50	50	260	254' 6" CO ₂ VEIN WITH CARBONATE PY AND FINE CR AND MEDIUM SIZED SPHALERITE		0.75-0.75 VEIN CUTTING LST CONC.	337	40%						
USMS 260.5-261.5 LST CONC.	3	0-TR	3				50	50	260				341	70%						
USMS 261.5-262.5 LST CONC.	3	0-TR	3				50	50	260				343	50%						
USMS 262.5-263.5 LST CONC.	3	0-TR	3				50	50	260				353	90%						
USMS 263.5-264.5 LST CONC.	3	0-TR	3				50	50	260				358	85%						
USMS 264.5-265.5 LST CONC.	3	0-TR	3				50	50	260				367	90%						

Box 12

Box 13

Box 14

ROCK TYPE AND TEXTURES	Carb. (3)	Carbonate %	Silica - Ind. (3)	Contacts	Veins	Faults	Bedding	Cleavage	GRAPHIC LOG Rock Type Structure Footage Mineralization Type (6)	SULPHIDE MINERALIZATION	Est. Grade	REMARKS	FOOTAGE BLOCKS	EST. CORE REC.	COMPOSITES	ASSAY				
																SAMPLE No.	Pb	Zn	Ag	Pb + Zn
USMS 226-277' 1ST CONC. FINE GRAINED SANDSD 278' 4" LF. CONC. COARSE GRAINED RADIALINE TEXTURE PY HALO 280' 5" LT. CONC. MED GRAINED	3	TR	3				35 70	? 45	270 280			PY IN SMALL ALERS, PDS AND CLASTS	274 277	60% 50%						
USMS 281-282' 1ST CONC. MED GRAINED PY HALO 284-287' 1ST CONC. COARSE GRAINED, FRAGMENTED CACO ₃ HEALD 289.5-290' SMALL 1ST. CLASTS.	3	TR	3				30 35	30 35	280 290				287 289	90% 95%						
USMS 291-292.5' 1ST CONC. COARSE GRAINED 297' - 2" 1ST CONC. MED-COARSE GRAINED	3	TR	3				40 45	45 50	290 300			BEDDING PARALLEL TO CLEAVAGE CONTACTED	296	95%						
USMS 303' 2" 1ST CONC. 308.5' 1" 1ST BED 309' 4" 1ST CONC.	3	TR	3				60 55	25 30	300 310				306	90%						
USMS 317.5-318.5' 1ST CONC. MED. GRAINED	3	TR	3				25 30		310 320			BEDDING VARIABLE	315	90%						
USMS 320-321' 1ST CONC. MED TO COARSE GRAINED PY HALO	3	TR	3				50		320 330			SECTIONS OF CONTACTED BEDDING - CHEST BOGS	323	95%						
USMS 336' 3" 1ST CONC. PY HALO	3	TR	3				50 70	35 40	330 340				332 334 337	95% 75% 90%						

ROCK TYPE AND TEXTURES	Carb. (3)	Carbonate %	Silica - Ind.(3)	Contacts	Veins	Faults	Bedding	Cleavage	GRAPHIC LOG Rock Type Structure Footage Mineralization Type (6)	SULPHIDE MINERALIZATION	Est. Grade	REMARKS	FOOTAGE BLOCKS	EST. CORE REC.	COMPOSITES	ASSAY					
																SAMPLE No.	Pb	Zn	Ag	Pb + Zn	Zn/Pb RATIO
340' - 2" 1ST CONC 345' CALC. & TRANSITION TO AM TRANSITION TO ACTIVE MEMBER	3	0 1/2	3				60	65				PY IN SMALL BLEBS AND POOS	344	90%							
350' 3" 1ST CONC 350.5' - 351.5' BEDDED LST. (LST CONC) 351.5' - 353' APPROXIMATE TO CALCS. CMS BLACK TO MED. GREY CHERTY MARLSTONE	0	20%	21				60	2					354	95%		71401	0.05	0.01		0.06	0.2
	1-2	10%	22				70	15				VERY FEW CHERT LAMINATIONS MED GRAY TO BLACK CARB. CHERTY VALLEY SIDE	360	98%		71402	0.01	0.01		0.02	1
CMS	2-3	0	3				90	30				BEDDING THIN AND FAINT	367	85%		71403	0.01	0.09		0.10	9
368' 3" 1ST CONC.							7	40					370			71404	0.01	0.01		0.01	1
CMS HAS APPEARANCE OF USMS CHERT LAMINATIONS	2-3	0	3				45	35				STYLOLITES ± CLEAVAGE ABSENT AS L	375	90%		71405	0.01	0.04		0.06	5
							70	40					380			71406	0.01	0.05		0.06	5
382.5' - 4" 1ST CONC. CMS	2-3	0	3				55	30					382	85%		71407	0.01	0.05		0.06	5
387-387.5' BEDDED LST. ACTIVE MEMBER	2	20%	2				40	?					388	80%		71408	0.01	0.18		0.19	18
CMS	2-3	0	3				75	?					392	70%		71409	0.10	1.04		1.14	10.4
394-396' 1ST CONC. COARSE GRAINED 396-396.5' BEDDED LST. 396.5-399' MED GREY CHERT 399-399.5' TBCMS 399.5-400.5' LT. GREY BASAL LST. WITH MS LENSES	1	0	3				50	35				398 ROCK BROKEN	397	85%		71410	0.04	0.36		0.40	9
400.5-401' MED GREY CHERT 401-401.5' TBCAL MS 401.5-402.5' MED TBCALMS							55	?					402	80%		71411	0.25	1.22		1.47	4.9
402.5-403' INTERCALATED TBCALMS PLST + MED GRAY CHERT 403-408' MIXED TBCMS + LST 408-408.5' LST 398.5-410' TBCMS	1-1 1/2	22%	2 1/2				40	?					410	95%		71412	0.52	2.91		3.43	5.6

BOX 19

BOX 30

BOX 31

BOX 32

Box 29
Box 29
Box 25
Box 26

ROCK TYPE AND TEXTURES	Carb. (3)	Carbonate %	Silica - Ind. (3)	Contacts	Veins	Faults	Bedding	Cleavage	GRAPHIC LOG Rock Type Structure Footage Mineralization Type (6)	SULPHIDE MINERALIZATION	Est. Grade	REMARKS	FOOTAGE BLOCKS	EST. CORE REC.	COMPOSITES	ASSAY						
																SAMPLE No.	Pb	Zn	Ag	Pb + Zn	Zn/Pb RATIO	
410-411.5' GRADED LST 411.5-415' TBCMS minor in clasts 414.5' 2" of WC Pb-Zn MS	1-1/2	22%	2%				55	35			10%		415	95%		71413	2.42	6.20		8.62	2.6	
415-416 MIXED CMS + LST CLASTS 416-421 MIXED TBCMS AND GRADED LST	1-2 1/2	50%	2				40				45%					71414	1.16	3.68		4.84	3.2	
421-422.5' GRADED LST 422.5-423.5 CALL. MS - CHERTY	1-1/2	72%	2				55	35					421	85%								
423.5-426' GRADED LST 426-427' MED GRAY CHERT 427-428' GRADED LST	2	10%	3								21%		424	90%		71415	0.17	0.61		0.78	3.6	
428-433.5' MED GRAY CHERT APPROACHING TBCMS IN PLACES LST CLASTS.	1-1/2	2%	2								1%		428	90%		71416	0.04	0.03		0.07	0.75	
433.5-437' TBCMS 437.5-438' LST CLAST	2-2 1/2	0	3				55	50			1%					71417	0.09	0.31		0.40	3.4	
436-437' TBCMS. 437-441.5' MIXED GRADED LST + TBCMS	1-3	TR	3								1%		435	90%		71418	0.27	1.06		1.33	3.9	
441.5-443.5' TBCMS	2-2 1/2	TR	3				60				1%					71419	0.17	0.37		0.54	2.2	
443.5-444' POORLY DEVELOPED LST CONC. 444-444.5' TBCMS. 444.5-447' POORLY DEVELOPED LST CONC. 447-458' POORLY DEVELOPED LST CONC.	1-2	52%	2				70	?			1%		445	95%		71420	0.14	0.01		0.15	0.07	
APPEARS TO BE LT. GRAY BASAL LST. THAT WAS BEING RECYCLED LST BEDS WITH INTERMIXED MUDSTONES.							70	25			1%		454	98%		71421	0.01	20.01				
458-460' BLACK CHERTY MUDSTONE 458.5' 2' SULPHIDE CLASTS 1/2"	1-2	0	3				75					SPECIMEN	460	95%		71422	0.02	1.14		1.16	57	
460-463' POORLY DEVELOPED TBCMS 463-466' CMS 465' LST CONC IN HARD 466-468' MIXED TBCMS and LT GRAY BASAL LST CLASTS	2	TR	3				70	25					461	98%		71423	0.02	0.17		0.19	8.5	
468-471' CHERTY BASAL LST CUT INTO CLASTS LOCALLY	1-1/2	75%	2				?	45								71424	0.03	0.04		0.07	1.3	
471-473' MIXED CALL MS + LT GRAY BASAL LST 473-474' LT GRAY BASAL LST. 474-481' CHERTY MUDSTONE WITH DISSEMINATED CALCITE BLEBS	1-1/2	71%	3					45					471	95%		71425	20.01	0.01				
				Am									480	98%		71426	20.01	20.01				

ROCK TYPE AND TEXTURES	Carb. (3)	Carbonate %	Silica - Ind. (3)	Contacts	Veins	Faults	Bedding	Cleavage	GRAPHIC LOG Rock Type Structure Footage Mineralization Type (6)	SULPHIDE MINERALIZATION	Est. Grade	REMARKS	FOOTAGE BLOCKS	EST. CORE REC.	COMPOSITES	ASSAY								
																SAMPLE No.	Pb	Zn	Ag	Pb + Zn	Zn/Pb RATIO			
LCMS DARK GREY TO BLACK MONOTONOUS CHERTY MUDSTONE CALCITE PSAMMITE BEDS	2	0	3	AM LMS			80		480			PY IN GLUBS AND FOS					71427	0.02	20.01					
																	71428	0.02	20.01					
492" 3" LST CLAST.	2	0	3				60		490			PY IN CENTER OF LST. CLAST	490	98%										
	2	0	3				70		500				500	98%										
	2	0	3				35		510			SEVERAL SMALL 1-2" PY AND OR LST. CLAST. COARSE PY SURROUNDED BY FINE PY. PY SURROUNDED BY LST. HALO.	510	98%										
CALCITE PSAMMITE BEDS	2	0	3				60		520				517	95%										
	2	0	3				60		520				522	80%										
END HOLE 528'							65		520				528	90%										
							60		530															

BOX 27
 BOX 28
 BOX 29

485'

ROCK TYPE AND TEXTURES	Carb. (3)	Carbonate %	Silica - Ind.(3)	Contacts	Veins	Faults	Bedding	Cleavage	GRAPHIC LOG Rock Type Structure	Footage	Mineralization Type (6)	SULPHIDE MINERALIZATION	Est. Grade	REMARKS	FOOTAGE BLOCKS	EST. CORE REC.	COMPOSITES	ASSAY					
																		SAMPLE No.	Pb	Zn	Ag	Pb + Zn	Zn/Pb RATIO
FMS CARB. INTER BED	3	45%	3				50							4-72 OPEN CONG. FAULT NORTH COURSE 66- SICKENSSTIGS	64	60%							
										70					66	70%							
															69	70%							
FMS 70-77 CALCALITTETS	3	4%	3				40							BANDS LST. VERY HARD.	77	60%							
															77	85%							
															79	50%							
FMS 20% DARK CLASTS	2 1/2	2%	1 1/4				45	10						UP TO 5% PYRITE LOCALLY IN POOS - GRAY.	82	50%							
															88	75%							
															90	98%							
FMS 20-30% DARK CLASTS	2	1%	1				60	0						SEDDING CUT BY CLEAVAGE - CLASTS	91	95%							
															97	90%							
FMS 15-20% DARK CLASTS	2 1/2	2%	1				70	10							101	75%							
															104	90%							
															105	95%							
FMS 40-50% DARK CLASTS	2	0	1				80	15							112	95%							
															118	90%							
FMS 60% DARK CLASTS	2	0	1				70	0						POOS IN CLEARANCE	127	85%							

BOX 8

BOX 9

BOX 10

ROCK TYPE AND TEXTURES	Carb. (3)	Carbonate %	Silica - Ind. (3)	Contacts	Veins	Faults	Bedding	Cleavage	GRAPHIC LOG Rock Type Structure	Footage	Mineralization Type (6)	SULPHIDE MINERALIZATION	Est. Grade	REMARKS	FOOTAGE BLOCKS	EST. CORE REC.	COMPOSITES	ASSAY				
																		SAMPLE No.	Pb	Zn	Ag	Pb + Zn
FMS 60% DARK CLASTS	2	0	1		2 85%		60	10				UP TO 5% PY LOCALLY IN POOLS + BLEBS BETW COY HALOS		135-140' MASS OF QTZ-CAS VEINS + VEINLETS 20'	132	90%						
FMS 60% DARK CLASTS	2	TR	1				50	10						CO ₂ IN CLEAVAGE	142	90%						
146-149' CARB. INTER BED	3	TR	1				85	X							145	90%						
149-158' CALC. SILC. MUDSTONE	3	10%	3		50 70		45					PIEN BUBBS + QUES IN LAM. // TO BEDDING		CONTAINS SECTIONS OF LAM. LST. VERY SILC. + CALC.	153	90%						
158-166' FMS 60% DARK CLASTS	2	0	1		50 70		45	10				15' 4" PY CLAST			158	85%						
166-175' CALC SILC. MS. TRANSITION TO USMS	3	10%	3				50					PY POOLS + CLASTS UP TO 4"		158-167 80% OF THE CORE PRESENT NO GORGE SLEEP PLANES	167	20%						
175' USMS BLACK CARB. SILC. MUDSTONE WITH BLACK CHERT LAM. AND CLASTS	3	10%	3+				80	80				PY IN POOLS + BLEBS WITH NO HALOS		CHERT LAM. + CLASTS VERY FINE	176	80%						
USMS 181-183 BASAL ZONE MS + LST FRAGMENTS IN USMS AND CO ₂ BATED LST CONC	3	10%	3+				80							MINOR LT. GRAY CARB. LAM.	182	90%						
186-190' BASAL PART OF LST. POORLY LST CONC																						
USMS 192-193 LST. CONC	3	5%	3+											192-202' MAX THICK OF CORE NO GORGE	192	95%						
															200	15%						

ROCK TYPE AND TEXTURES	Carb. (3)			Contacts	Veins	Faults	Bedding	Cleavage	GRAPHIC LOG Rock Type Structure	SULPHIDE MINERALIZATION	Est. Grade	REMARKS	FOOTAGE BLOCKS	EST. CORE REC.	COMPOSITES	ASSAY				
	Carbonate %	Silica - Ind. (3)														SAMPLE No.	Pb	Zn	Ag	Pb + Zn
USMS ↓	2	55	3+		205		60		210			201-207 - 6" OF CORE MOSTLY FRAG - NO POLY	202	45%						
													207	15%						
USMS ↓ 215-220 LST CONC	3	51	3				60 50		220				216	90%						
													219	90%						
USMS CHEAT LAM + CLASTS ↓	3	TR 51	3			40 30			230			PY IN 00AS WITH CO3 MOLASS PY IN 072 CONG. PSEUDO BED	227	75%						
USMS ↓	3	TR 51	3			60 80			240				237	45%						
													238	90%						
USMS ↓	3	TR 51	3		210	40			250			CORE BROKEN	244	85%						
USMS ↓ 257-257.5 LST CONC 258-259 LST CONC	3	TR 51	3		50 45	70	30		260			1/2" LST BAND CUT BY CLEAVAGE CG-072 WEN 257.5-258 FRAG OF CORE	250	50%						
USMS ↓	3	TR 51	3		50 45	80			270			260-261 GONGE	260	90%						
													268	20%						

BOX II

BOX I

BOX III

ROCK TYPE AND TEXTURES	Carb. (3)	Carbonate %	Silica - Ind. (3)	Contacts	Veins	Faults	Bedding	Cleavage	GRAPHIC LOG Rock Type Structure Footage Mineralization Type (6)	SULPHIDE MINERALIZATION	Est. Grade	REMARKS	FOOTAGE BLOCKS	EST. CORE REC.	COMPOSITES	ASSAY				
																SAMPLE No.	Pb	Zn	Ag	Pb + Zn
USMS 276S-4' LST CONC IN HALO	2	2%	3				50	30		IN 14 FOLDS + ALFOS BY HALOS		LONG SHORT LAM. CLASTS CUT BY CLEAVAGE	275	80%						
USMS 285-285'S LST CONC	3	7R	3				70	25				SMALL ST. GRAY CALC. CLASTS	285	95%						
USMS	2	2R	3				15	30				IN LAM. CUT BY CLEAVAGE	295	95%						
USMS 300-301 LST CONC. CRT. SCLEROSIS	3	7R	5+				50	20				SCLEROSIS	301	85%						
USMS 307-308 LST CONC. POORLY ORIENT.							30	20					308	85%						
USMS 314S-316 LST CONC. ISLANDS	3	7R	3+				5	25				DISCONTINUOUS THEN BY LAM.	311	80%						
USMS 315-327S LST CONC. CRT. SCLEROSIS	3	7R	3				50	20				SEVERAL 3" LST CONC. WITH BY HALOS	324	85%						
USMS 328-330 LST CONC.							20	20					330	90%						
USMS 335-337 LST CONC.	3	7R	3				8	25				IN LAM. TO CLEAVAGE	334	85%						
												334 SCLEROSIS NODULE CONC	337	85%						
													337	90%						

ROCK TYPE AND TEXTURES	Carb. (3)	Carbonate %	Silica - Ind. (3)	Contacts	Veins	Faults	Bedding	Cleavage	GRAPHIC LOG Rock Type Structure Footage Mineralization Type (6)	SULPHIDE MINERALIZATION	Est. Grade	REMARKS	FOOTAGE BLOCKS	EST. CORE REC.	COMPOSITES	ASSAY						
																SAMPLE No.	Pb	Zn	Ag	Pb + Zn	Zn/Pb RATIO	
USMS 345-346 LST CONC	3	TR	3 ⁺				60	75				PY POOS + BUBBS WITH CO ₂ HALOS	345	95%								
350' - 2" LST CONC BY HAND									350													
349-362 MED GRAY CHERT	2	0	3 ⁺				50	10			0	CHERT LAM. + CLASTS. VERY ABRE. TRANSITION TO AM.	351 354 357	95% 95% 95%		71429	20.01	20.01				355
362-365 USMS	3	0	3 ⁺										361	95%		71430	20.01	20.01				
365' ACTIVE MEMBER																						
366-366 MED GRAY CHERT	3	0	3 ⁺	LINE			50	20			0	CHERT LAMINATIONS CARBONACEOUS	366	85%		71431	20.01	20.01				365
366-376 CMS WITH BLACK CHERT LAM. AND CLASTS	3	0	3	AM					370							71432	0.01	20.01				
376-378 LT GRAY CHERT SLIGHTLY LAM.	2	0	3 ⁺				60	20			0	CONEC 1" CORE BROKE	371 375	85% 80%		71433	0.02	0.01		0.03	0.5	375
378-380.5 CMS, FEW CHERT LAM, LST CONC	3	TR	3						380			DISCONTINUOUS BY LAM	380	95%		71434	20.01	0.01				
380.5-381' LST CONC																						
381-386 CMS INTERCHERT	3	TR	3				60	20			0	SLEEK NEW BEDS 384-386 CORE BROKEN MAJOR CONEC	385	80%		71435	0.03	0.88		0.91	29.3	385
386-387 WEAKLY DEVELOPED TB CALCMS	2	SI	2 ⁺						390		127					71436	0.01	0.01		0.01	1	
387-391 BANDED LST	2	TR	3									390-391 CORE BROKEN ASP										
391-392 MED GRAY CHERT	3	0	3 ⁺										391	75%		71437	0.01	0.01		0.01	1	
392-395 LST CONC, FINE ZILLING, BY HAND													395	55%								
395.5-396.5 CALCMS + LST CONC	3	TR	3										397	75%		71438	0.01	0.02		0.03	2	
396.5-397.5 MED GRAY CHERT	3	0	3 ⁺				60	30			TR											
397.5-402' BANDED LST	2	TR	3						400			RIT BY 603-0FF VEINS		96								
402-402.5 MED GRAY CHERT	3	0	3 ⁺																			
402.5-404' CALCMS + LST CONCS	3	TR	3										405	90%		71439	0.23	0.78		1.01	3.4	
404-406 BANDED LST	2	TR	2				50															
406-413.5 CALCMS + LST CONC MINOR WEAKLY DEVELOPED TB CALCMS	3	0	3 ⁺						410				410	85%		71440	0.30	0.87		1.17	2.9	405

ROCK TYPE AND TEXTURES	Carb. (3)			Silica - Ind. (3)	Contacts	Veins	Faults	Bedding	Cleavage	GRAPHIC LOG			SULPHIDE MINERALIZATION	Est. Grade	REMARKS	FOOTAGE BLOCKS	EST. CORE REC.	COMPOSITES	ASSAY				
	Carb. %	Carbonate %								Rock Type Structure	Footage	Mineralization Type (6)							SAMPLE No.	Pb	Zn	Ag	Pb + Zn
LCMS Box 26	3	10%	3					45					TR PY IN SLABS + DISSEMINATED	BLACK MONOTONOUS SILC MUDSTONE BTZ. CO ₂ PSEUDO BEDS	484	85%							
								7							486	75%							
LCMS	3	10%	3												493	95%							
LCMS Box 27 446.1-448 HEAVY BX ZONE CALCAREOUS SULPHIDE RICH CLASTS PY, GN+SPA MAY BE 1ST CLASTS	3	10%	3					60							503	98%							
								70							509	98%							
LCMS	3	10%	3												517	90%							
															520	75%							
LCMS Box 28	3	5%	3					50							530	90%							
								5															
LCMS	3	5%	3					60							538	85%							
								25															
LCMS Box 29	3	5%	3					40							545	85%							
								25															

N. I.S. MAP GRID: 105 Z 6

LOCATION: _____

DATE COLLARED: _____

DATE COMPLETED: _____

BEARING: 030

LENGTH: 169'

DIP: -80

LATITUDE: _____

DEPARTURE: _____

ELEVATION: _____

PROPERTY: XY

CORE SIZE: NQ

SCALE OF LOG: 1"=10'

HOLE No.: 00N-102

SHEET No.: 1 of 3

LOGGED BY: PP

DATE: Nov 1st 87

ROCK TYPE AND TEXTURES	GRAPHIC LOG						SULPHIDE MINERALIZATION	Est. Grade	REMARKS	FOOTAGE BLOCKS	EST. CORE REC.	COMPOSITES	ASSAY					
	Carb. (3)	Carbonate %	Silica - Ind (3)	Contacts	Veins	Faults							Bedding	Cleavage	Rock Type Structure	Footage	Mineralization Type (6)	SAMPLE No.
CASING TO 12'																		
FLAGGY MUDSTONE 40% DARK CLASTS	2	0	1+			70		UP TO 5% PY IN BLENDS AND PODS	14' WORK BARRIERS	13								
						40		1 1/2" BAND FINE PI		17	80%							
						60				20	60%							
FMS 40-50% DARK CLASTS	1+	0	1 1/2-			70				23	85%							
						40												
FMS 35% DARK CLASTS	1+	0	1+			55		PY PODS WITH CO ₂ HALOS	38 MASS OF CO ₂ (PIPSUM) CLASTS	38	95%							
						70												
FMS 40% DARK CLASTS	2	0	1+			50				43	98%							
						70												
FMS 40% DARK CLASTS	1+	0	1+			70			32' 1/2" BAND OF CO ₂ CLASTS	52	90%							
						70												

ROCK TYPE AND TEXTURES	Carb. (3)	Carbonate %	Silica - Ind. (3)	Contacts	Veins	Faults	Bedding	Cleavage	GRAPHIC LOG Rock Type Structure Footage Mineralization Type (6)	SULPHIDE MINERALIZATION	Est. Grade	REMARKS	FOOTAGE BLOCKS	EST. CORE REC	COMPOSITES	ASSAY				
																SAMPLE No.	Pb	Zn	Ag	Pb + Zn
BOX 4 FMS 6L CARB. INTERBED 78% DARK	2 1/2	TR	2+				50	10		TR PY. IN BLEBS		62-67' ONLY 1.5' OF CORE NO COUPE	62	98%						
													67	20%						
													68	75%						
													70	78%						
FMS CARB INTERBED 79.5% DARK	2 1/2	TR	2+				70						72	80%						
													74	95%						
													77	55%						
													80	80%						
FMS FR. 60% DARK CLASTS	1	0	2 1/2				65	20		PY IN BLEBS AND PODS WITH CO ₂ HALOS		MASSES OF CO ₂ BLEBS UP TO 2" WIDE OCCASIONALLY WITH PY CONCRETIONS	87	85%						
							65	10												
BOX 5 FMS 70% DARK CLASTS	2	0	1 1/2				60						93	95%						
													96	85%						
													98	80%						
FMS 50% DARK CLASTS	2	0	1+				55	10					104	80%						
							50													
BOX 6 FMS 70% DARK CLASTS	2	0	1+				80	15					111-5-112'	MASSES OF CO ₂ BLEBS						
							112-113'	LST CONC												
BOX 7 FMS 80% DARK CLASTS	2	0	1+				80						116	90%						
													117	95%						
													127	95%						

ROCK TYPE AND TEXTURES	Carb. (3)	Carbonate %	Silica - Ind. (3)	Contacts	Veins	Faults	Bedding	Cleavage	GRAPHIC LOG Rock Type Structure	SULPHIDE MINERALIZATION	Est. Grade	REMARKS	FOOTAGE BLOCKS	EST. CORE REC.	COMPOSITES	ASSAY				
																Footage	Mineralization Type (6)	SAMPLE No.	Pb	Zn
FMS 70% DARK CLASTS	2	0	1				25						137	95%						
FMS 142' CARB INTER BED	3	TR	2/3				65			PY IN PODS + BLEB SOME LG HALOS		BLACK SILC MUONSTONE MAY BE TRANK TO USMS NO CHERT LAM OR CLASTS	145	95%						
CARB. INTER BED	5	TR	2/3							LESS PY			151	80%						
CARB INTERBED	3	TR	2/3				80			PY IN THIN LAM,			159	80%						
CARB INTERBED	3	TR	2/3							TR PY			163	80%						
169' END OF HOLE													169	85%						

BOX 8
BOX 9

LOCATION: _____

BEARING: 030

LATITUDE: _____

PROPERTY: XY

SHEET No.: 1 of 7

DATE COLLARED: _____

LENGTH: 478'

DEPARTURE: _____

CORE SIZE: NQ

LOGGED BY: PP

DATE COMPLETED: _____

DIP: -75°

ELEVATION: _____

SCALE OF LOG: 1"=10'

DATE: Nov 7 81

ROCK TYPE AND TEXTURES	Carb. (3)	Carbonate %	Silica - Ind (3)	Contacts	Veins	Faults	Bedding	Cleavage	GRAPHIC LOG Rock Type Structure	Footage	Mineralization Type (6)	SULPHIDE MINERALIZATION	Est. Grade	REMARKS	FOOTAGE BLOCKS	EST. CORE REC	COMPOSITES	ASSAY																						
																		SAMPLE No.	Pb	Zn	Ag	Pb + Zn	Zn/Pb RATIO																	
12' CASING										10																														
FLAGGY MUDSTONE 50% DARK CLASTS	2'	TR	H												17	75%																								
5' MS 30% DARK CLASTS	2'	TR	H							20					21	75%																								
5' MS 60% DARK CLASTS	2'	TR	H							30					26	85%																								
										40																														
5' MS 20% DARK CLASTS	2'	TR	H							55					33	95%																								
										60														37	95%															
5' MS 60% DARK CLASTS	2'	TR	H							55					42	95%																								
										60														45	80%															
5' MS 60% DARK CLASTS	2'	TR	H							55					52	90%																								
										65														60	95%															

Box 1
Box 2
Box 3

ROCK TYPE AND TEXTURES	Carb. (3)	Carbonate %	Silica - Ind. (3)	Contacts	Veins	Faults	Bedding	Cleavage	GRAPHIC LOG Rock Type Structure	FOOTAGE Footage	MINERALIZATION Mineralization Type (6)	SULPHIDE MINERALIZATION	Est. Grade	REMARKS	FOOTAGE BLOCKS	EST. CORE REC.	COMPOSITES	ASSAY				
																		SAMPLE No.	Pb	Zn	Ag	Pb + Zn
FMS 50% DARK CLASTS	2+	2	2				60					PV IN BLENDS AND PODS WITH Ca, HALDS		LET CONC? MASSIF OF Ca, BLENDS	67	95%						
										70					68	80%						
FMS 40% DARK CLASTS	2	6	2				70								73	98%						
							70			80					74	85%						
FMS 50% DARK CLASTS	2+	TR	1+				70								85	95%						
										90												
FMS 70-80% DARK CLASTS	2+	TR	1+				65								95	98%						
							65	2+		100												
FMS 30% DARK CLASTS	2+	TR	1+				70								102	98%						
										110					103	40%						
102-103 LET CONC POOR LN DEVEL.															105	50%						
FMS 30% DARK CLASTS	2	TR	1/2				70								114	95%						
113-118 LET CONC							65			120												
FMS 70% DARK CLASTS	2+	TR	1/2				60								124	98%						
										130					126	90%						
															127	85%						

ROCK TYPE AND TEXTURES	Carb. (3)	Carbonate %	Silica - Ind. (3)	Contacts	Veins	Faults	Bedding	Cleavage	GRAPHIC LOG			SULPHIDE MINERALIZATION	Est. Grade	REMARKS	FOOTAGE BLOCKS	EST. CORE REC.	COMPOSITES	ASSAY				
									Rock Type Structure	Footage	Mineralization Type (6)							SAMPLE No.	Pb	Zn	Ag	Pb + Zn
70'S DARK SLABS	2+	0	2-				70								134	80%						
							70								136	80%						
70'S 143-157 CARB. INTERBED 149.5 4" CALCITE (SAMPLED)	2+	75	3-				70								145	98%						
															149	75%						
70'S ↓	2+	51	5-												155	95%						
															159	98%						
70'S ↓ 157 UPPER SILICEOUS MUDSTONE	2+	88	3-				75								167	80%						
70'S ↓	3+	52	3				80								177	98%						
70'S ↓	3+	52	3				75								187	95%						
70'S ↓	2+	52	3+												197	95%						
							70															

ROCK TYPE AND TEXTURES	Carb. (3)	Carbonate %	Silica - Ind.(3)	Contacts	Veins	Faults	Bedding	Cleavage	GRAPHIC LOG Rock Type Structure Footage Mineralization Type (6)	SULPHIDE MINERALIZATION	Est. Grade	REMARKS	FOOTAGE BLOCKS	EST. CORE REC.	COMPOSITES	ASSAY					
																SAMPLE No.	Pb	Zn	Ag	Pb + Zn	Zn/Pb RATIO
USMS	3	TR 38	3				60			TR PY IN GLASS + THEN LA		CHERT LAM + CLASTS	207	95							
USMS	3	TR 52	1				50						217	97							
USMS	3	TR 52	3				50 50						227	97							
USMS SANDS LST CONC POOR 237-239.5 LST CONC	3	TR 42	3				70 40					OCCASIONAL CO ₂ KENAO OED	237	95							
USMS 245-248 LST CONC 248-249 LST CONC POORLY DEVEL. 249-250 LST CONC	3	TR 3	3				55 50						247	95							
USMS	3	TR 3	3				60						252 254 255	95 95 95							
USMS	3	TR 3	3				70 70 70						261 265 270	90 90 90							

ROCK TYPE AND TEXTURES	Carb. (3)	Carbonate %	Silica - Ind. (3)	Contacts	Veins	Faults	Bedding	Cleavage	GRAPHIC LOG Rock Type Structure Footage Mineralization Type (6)	SULPHIDE MINERALIZATION	Est. Grade	REMARKS	FOOTAGE BLOCKS	EST. CORE REC.	COMPOSITES	ASSAY				
																SAMPLE No.	Pb	Zn	Ag	Pb + Zn
USMS 2735-2741 LST CONC 2745-2765 LST CONC PY HALO	3 ⁺	TR	3				30	26	285	TR PY IN BLEBS		972 PSEUDO BEDS LESS CHERT LAM	274	80%						
USMS	3 ⁺	TR	3				70		290	ISS PY LAM.			281	85%						
							80		290				287	83%						
									290				289	95%						
USMS 297-298 LST CONC PY HALO	3	TR	3						300			287-297 CORE MISSING NO SAMPLE	297	40%						
									300			297 6" BROKEN CORE SECTIONS HAVE BEEN RE DRILLED								
USMS 299-302 LST CONC CLASTS	3	TR	3				60		310				305	90%						
							50		310											
USMS 315-321 LST CONC PY HALO	3	TR	3				70		320				315	95%						
							43		320											
320-322 LST CONC USMS	3	0	3				48		320				322	95%						
									320											
329 FAULT									330				329	90%						
									330											
341-343 USMS, CHERT, LST CONC									340											
									340											
344-345 LST CONC PY HALO									340				337	410%						
									340											

BOX 15

BOX 15

325

ROCK TYPE AND TEXTURES	Carb. (3)	Carbonate %	Silica - Ind. (3)	Contacts	Veins	Faults	Bedding	Cleavage	GRAPHIC LOG Rock Type Structure	Footage	Mineralization Type (6)	SULPHIDE MINERALIZATION	Est. Grade	REMARKS	FOOTAGE BLOCKS	EST. CORE REC.	COMPOSITES	ASSAY						
																		SAMPLE No.	Pb	Zn	Ag	Pb + Zn	Zn/Pb RATIO	
410-413 CMS + CHERT COMPACTED PSEUDO BEDS GARBAGE RX 415-421 GARROD LST	3	0	3+											410-414 NEAR GORGE BROKEN CORE	414	80%		71473	006	0.20		0.26	3.3	
	2-	72%	3+															71472	0.21	0.26		0.47	1.2	
421-423 TO CALLMS + SENOR VULCANIC 423-424 CALLMS + LST 424-425 CMS + CHERT 425-428 SAND LST SENOR CALLMS 428-430 RUBBLE + GORGE	3/2	2%	3				55						2-3%		423	85%		71473	0.97	1.94		2.97	2	
	3	0	3+												426	90%		71474	0.11	0.27		0.38	2.5	
	2-	72%	3												430	50%		71474	0.11	0.27		0.38	2.5	
430-432 CMS 432-438 CALCMS + LST	3	0	3												435	60%		71475	0.01	0.09		0.10	9	
	2 1/3	TR	3															71475	0.01	0.30		0.31	30	
438-439 CMS 439.5-441.5 GARBAGE RX	3	TR	3															71475	0.01	0.30		0.31	30	
441.5-444.5 LI CRAY BASAL LST 444.5 - LCMS CO ₂ BUBBLES	2	72%	1+												445	80%		71477	0.01	0.06		0.07	6	
	3	56%	3															71478	0.01	0.01		0.02	1	
							70												71478	0.01	0.01		0.02	1
LCMS	3	TR	3												451	90%		71479	0.01	0.01		0.02	1	
															454	80%		71479	0.01	0.01		0.02	1	
															457	50%		71480	0.01	2.001				
																			71480	0.01	2.001			
LCMS	3	TR	3				60								464	80%								
															468	85%								
							50																	
	3	TR	3												474	75%								
															478	95%								