

MAP No.

106-B-13, C-15, 16N, M.A.P.

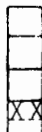
-F-1,2, G-4

ASSESSMENT REPORT

RELEASED

CONFIDENTIAL

OPEN FILE

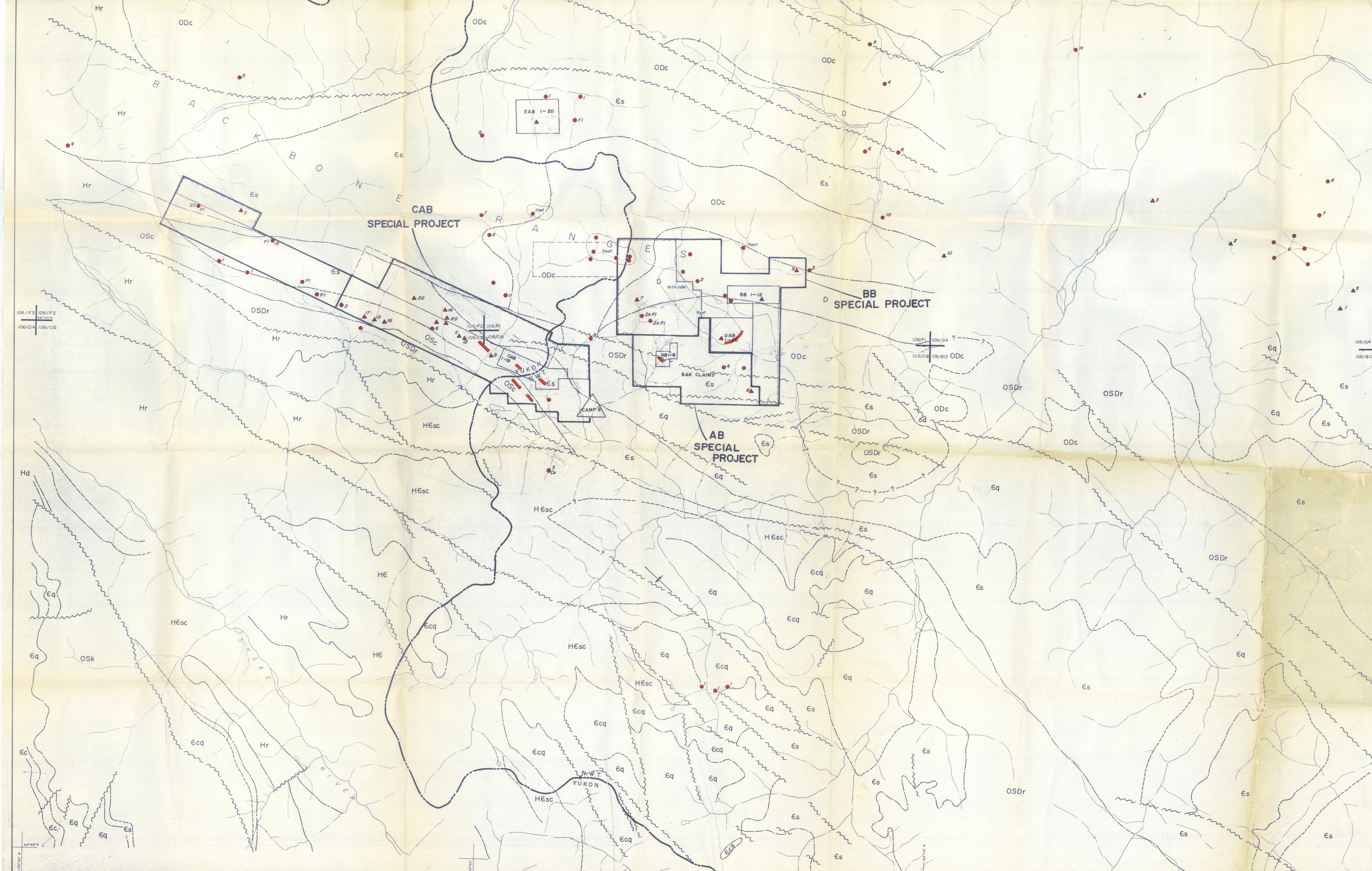


TYPE OF

WORK:

GEOLOGY MAP

REPORT FILED UNDER	Welcome North Mines Ltd.	DOCUMENT NO. 062082
DATE PERFORMED	July 24, 1974	DATE FILED:
LOCATION - LAT.	6500 N	AREA: Backbone Ranges, Mack/Yukon
LONG.	132 15 W	
CLAIM NO.	ARCTIC RED PROJECT	
	BB, DAB, BAK, CAB, EAB	
VALUE \$		
WORK DONE BY	?	
WORK DONE FOR	Welcome North Mines Ltd.,	
REMARKS	A compilation geology map showing the location of mineral occurrences.	



LEGEND

<p>DEVONIAN</p> <p>D</p> <p>SILURIAN</p> <p>OSc</p> <p>ORDOVICIAN</p> <p>ODc</p> <p>CAMBRIAN</p> <p>Es</p> <p>Eq</p> <p>Ecq</p> <p>HADRYNIAN</p> <p>Hε</p> <p>Hεsc</p> <p>Hr</p>	<p>DEVONIAN CARBONATES</p> <p>ORD-SIL CARBONATES</p> <p>ROAD RIVER SHALE</p> <p>OSDr</p> <p>ORD-DEV CARBONATES</p> <p>SEKWI DOLOMITE</p> <p>BACKBONE FORMATION</p> <p>Quartzite, Sandy Dolomite</p> <p>Slate, Siltstone</p> <p>GRIT UNIT</p> <p>Hs</p> <p>RAPITAN</p>
---	---

—	Claims boundary presently staked
- - -	Claims boundary, staking in progress
—	Proposed Special Project boundary
—	Mineralized Zone
▲	Mineral occurrence
●	Minor mineralization
FI	Float
Reef	Mt. Kindle type silicified breccia
—	Fault
—	Contact (defined, assumed)

WELCOME NORTH MINES LTD. (N.P.L.)
ARCTIC RED PROJECT
COMPILATION MAP
 NTS 106 B/13, 106 C/15, 106 G/4, 106 F/1, 2

