

DON TULLY ENGINEERING LTD.
SUITE 102 - 2222 BELLEVUE AVENUE
WEST VANCOUVER, BRITISH COLUMBIA
V7V 1C7



REPORT ON THE

TROUT #19, 21, 23, 25, 27, 29, 31, 33, 35, 37-43, 45-46, 49-54
GRANT NOS Y88364, 66, 68, 70, 72, 74, 76, 78, 80-86, 88-89, 92-97, 62
BONNET PLUME RIVER AREA
MAYO MINING DISTRICT
YUKON TERRITORY
CANADA

N.L. 64°-29'

W.L. 132°-58'

FOR

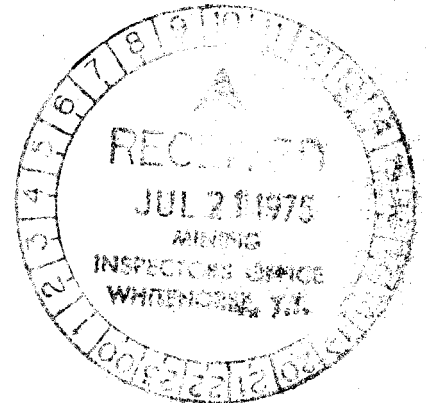
OLYMPIAN INTERNATIONAL RESOURCES LIMITED
SUITE 514 - 355 BURRARD STREET
VANCOUVER, BRITISH COLUMBIA

BY

DONALD W. TULLY, P.ENG.

JULY 10, 1975

WEST VANCOUVER, B.C.



This report has been examined by the Geological Evaluation Unit and is recommended to the Commissioner to be considered as representation work in the amount of

\$ 24,000.00

under 7(C) of revised schedule

[Signature]

~~Resident Geologist or
Resident Mining Engineer~~

Considered as representation work under Section 53 (4) Yukon Quartz Mining Act.

[Signature]

S.R. BAXTER
Supervising Mining Recorder

Commissioner of Yukon Territory



TABLE OF CONTENTS

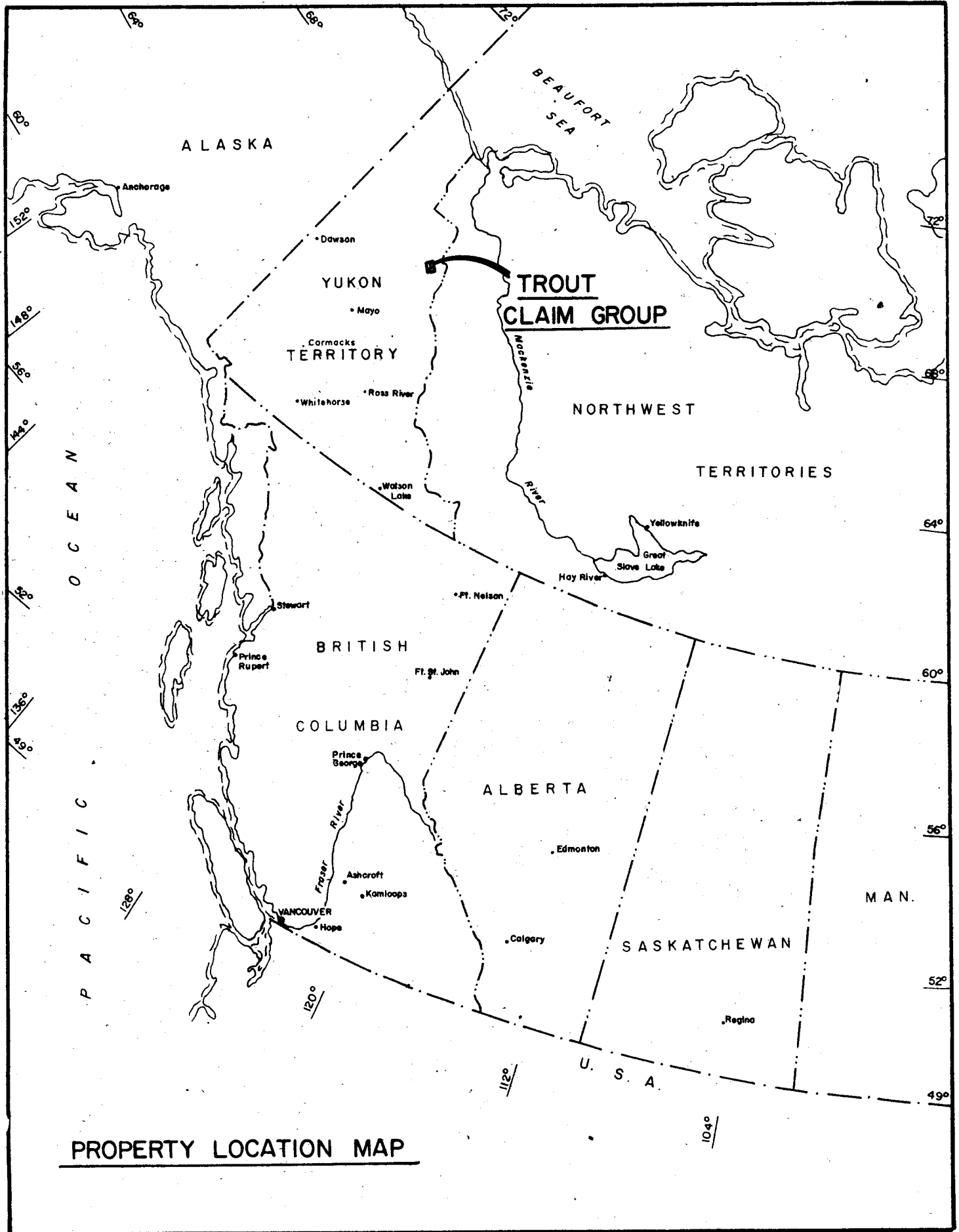
	<u>PAGE</u>
INTRODUCTION.....	1
SUMMARY AND CONCLUSIONS.....	1
PROPERTY - LOCATION, ACCESS, TOPOGRAPHY.....	2
CLAIMS.....	3
HISTORY - PREVIOUS DEVELOPMENT - REFERENCES.....	4
GEOLOGY - REGIONAL.....	6
- PROPERTY.....	7
GEOCHEMICAL SURVEY.....	8
RECOMMENDATIONS.....	8
ESTIMATED COSTS.....	9
CERTIFICATE.....	End of Report

MAPS

LOCATION MAP.....	Frontispiece
TOPOGRAPHIC MAP (N.T.S. 106-C).....	Following Page 1
CLAIM PLAN.....	Following Page 3
PLAN OF GEOCHEMICAL ASSAY RESULTS (Sketch)..	Following Page 7
GEOLOGY AFTER G.S.C. PAPER 1970-1A.....	Following Page 8
PLAN OF GEOCHEMICAL RESULTS.....	In Pocket

APPENDIX

TIME-COST DISTRIBUTION and STATUTORY DECLARATION
TIME-COST SHEET on CON-WOLF AIREX LTD. Letterhead dated August 29, 1974 (unsigned)
ASSAY CERTIFICATES dated August 28, 1974 (signed)
TERR-AIR HELICOPTER receipt dated August 11, 1974 (signed)



INTRODUCTION

This report was prepared at the request of Mr. Egan Kreuger, Olympian International Resources Limited, Suite 514, 355 Burrard Street, Vancouver, British Columbia.

Geological and geochemical investigations in the Goz Creek and Corn Creek areas north of the Bonnet Plume River in July and August, 1973, resulted in the discovery of silver-lead-zinc mineralization. The west to northwesterly trend of the mineralized discoveries over a strike length of several miles in the area immediately north of the Bonnet Plume River west of Goz Creek set the scene for a substantial program of claim staking.

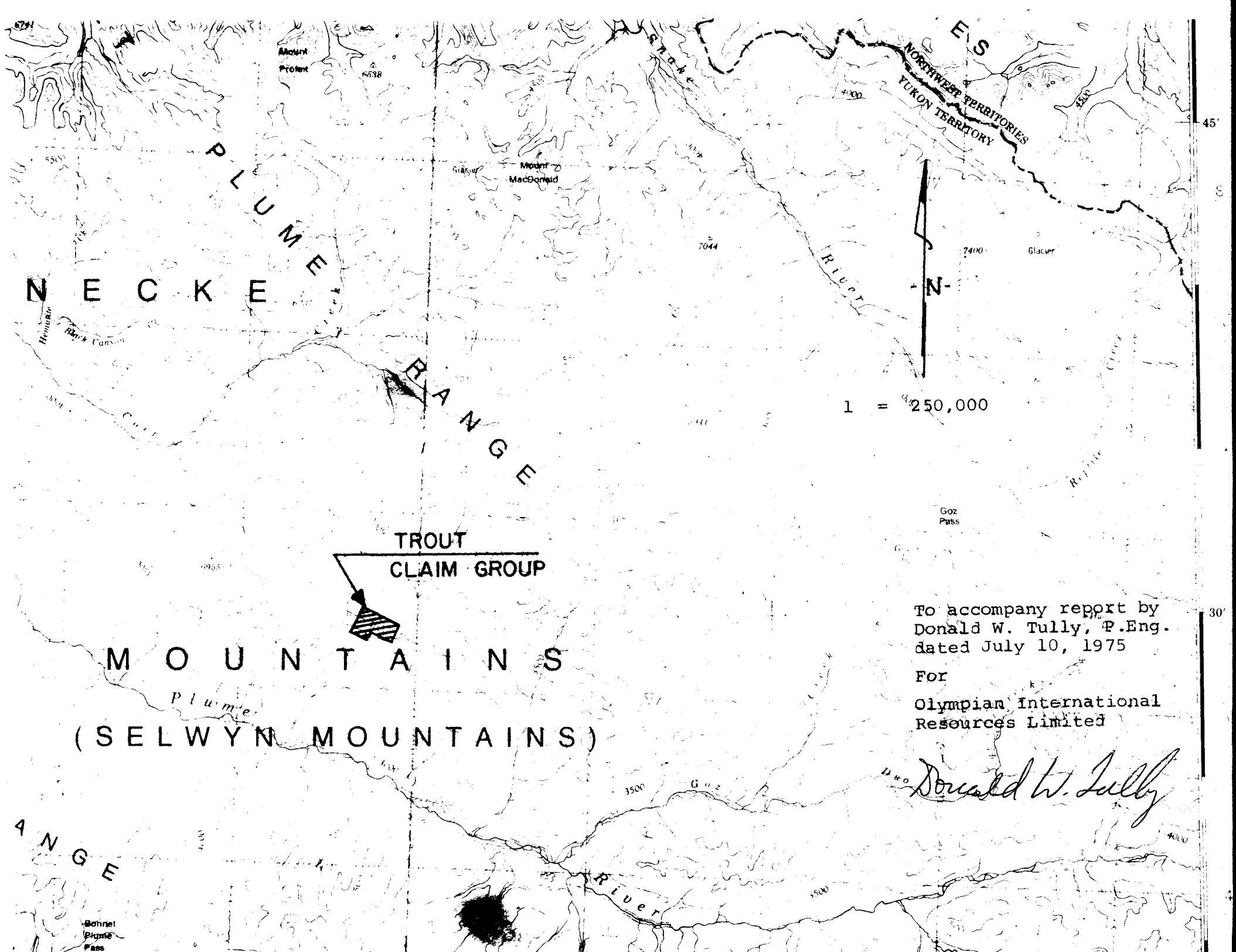
A work program of reconnaissance geochemical soil sampling was done during the summer of 1974.

SUMMARY AND CONCLUSIONS

The TROUT claim group now comprises 24 contiguous mineral claims five miles north of the Bonnet Plume River and about 115 miles northeast of Mayo.

Favourable Devonian-type dolomite and grey to brown weathering dolomitic limestone beds trend west-northwesterly through the claim group on the westerly strike of nearby known lead-zinc mineralization occurring in bioherm and dolomitite horizons where dark shale and sandstone beds are frequently in close association. Sphalerite is the major mineral in the Bonnet Plume area.

Control of the locus of the silver-lead-zinc mineralization in the Bonnet Plume area is believed to be related to



NECK PLUMIE

RANGE

MOUNTAINS
(SELWYN MOUNTAINS)

TROUT
CLAIM GROUP

NORTHWEST TERRITORIES
YUKON TERRITORY

1 = 250,000

To accompany report by
Donald W. Tully, P.Eng.
dated July 10, 1975
For
Olympian International
Resources Limited

Donald W. Tully

Behrlet
Plumie
Pass

brecciated zones superimposed on an algal-reef formational horizon and are later silicified with fine quartz veinlets frequently in stratiform aspect. Actual structural controls for the mineralization are only partly understood at the present time.

Although the property is located outside of regular land transportation routes the existence of high-grade silver-lead-zinc occurrences on the nearby properties of Barrier Reef Resources and Cypress Resources in the Bonnet Plume area under similar geological conditions makes this property a promising exploration target.

A Phase I program of detailed geochemical soil sampling is proposed to delineate favourable geological horizons and present indications of possible geochemical soil anomalies is considered warranted.

A follow-up phase is proposed to test any anomalous areas by diamond drilling.

The total cost of the proposed work program is estimated at \$11,150.00.

PROPERTY - LOCATION, ACCESS, TOPOGRAPHY

Physiographically the claims lie within the northern Selwyn Mountains.

The TROUT mineral claims are located about 115 miles northeast of Mayo on the north side of the Bonnet Plume River opposite Bonnet Plume Pass which is a tractor route used as a winter tote road in the period 1966-1969.

Access is best by helicopter or fixed-wing aircraft from bases at Mayo. Fixed-wing aircraft can land on Pinguicula Lake some eighteen miles to the northwest and thence by helicopter to the property.

Elevations vary between 4500 and 6000 feet above sea-level over the property. Below 4500 feet small spruce and poplar are common.

Overburden is sand and gravel along the valley basin of the Bonnet Plume River and the adjoining creek valley bottom.

There is ample water for any purpose in a small creek at the west end of the claim group.

Climate is not unusual for this latitude. Summer temperatures vary but average between 40-60 degrees F. Winter temperatures frequently fall to minus 40 degrees F.

Average rainfall is 20-30 inches annually.

CLAIMS

The TROUT claim group is located in the Mayo Mining District, Yukon Territory.

A check with the Mining Recorder's Office at Mayo on June 24th, 1975 gave the following information:

IN ACCORDANCE WITH THE ACT RESPECTING
 THE SHEET BEFORE ADEQUATE SURVEYS HAVE
 BEEN MADE.

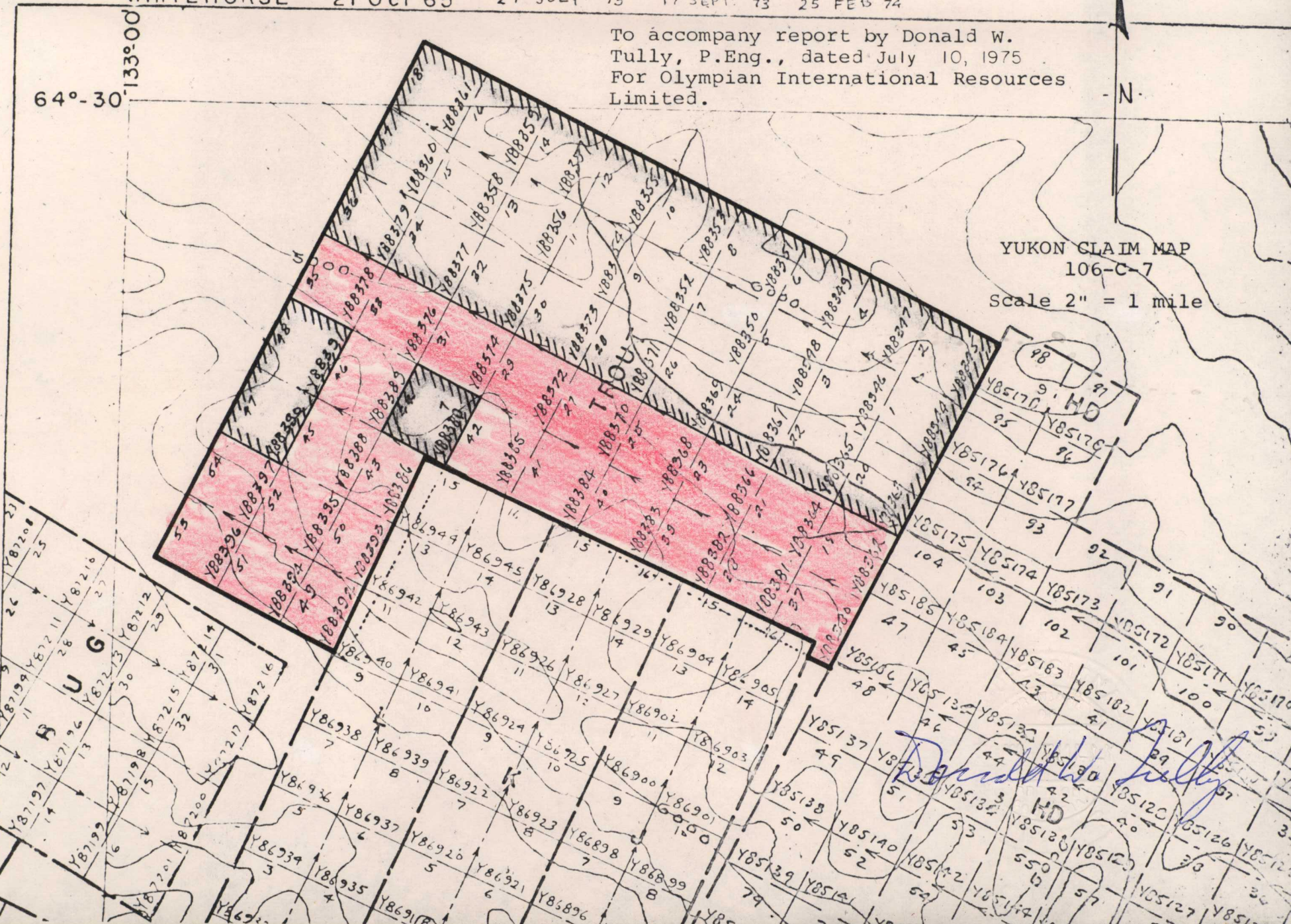
13	SEPT	73	3	JULY	74
11	SEPT	73	18	JUNE	74
7	SEPT	73	30	MAY	74
21	AUG	73	8	MAY	74
13	AUG	73	23	APRIL	74
27	JULY	73	10	APRIL	74
			9	APRIL	74
			1	APR	74
			20	SEPT	73
			24	FEB	74
			17	SEPT	73
			25	FEB	74

WHITEHORSE 29 AUG. 73
 21 Oct 65

To accompany report by Donald W. Tully, P.Eng., dated July 10, 1975
 For Olympian International Resources Limited.

64°-30'
 133°00'

YUKON CLAIM MAP
 106-C-7
 Scale 2" = 1 mile



<u>CLAIM NAME</u>	<u>GRANT NUMBER</u>	<u>STAKER</u>	<u>DATE RECORDED</u>
TROUT 19,21, 23	Y88362,64,66	A. Waugh	16 Apr/76
TROUT 25,27, 29,31	Y88368,70,72, 74	C. Carlson	16 Apr/76
TROUT 33,35, 37-40	Y88376,78,80- 83	P. Goodman	16 Apr/76
TROUT 41-43, 45-46	Y88384-86,88- 89	S. Wolfe	16 Apr/76
TROUT 49-54	Y88392-97	L. Waugh	16 Apr/76

The claims are shown on Yukon claim plan 106-C-7.

A chain and compass claim survey is recommended to locate claim posts and establish title.

On record all the claims appear to be in good standing.

HISTORY - PREVIOUS DEVELOPMENT - REFERENCES

Programs of geochemical and geological reconnaissance mainly in search of base metals have been conducted in this area of the northern Selwyn Mountains since 1946 but the results are in private files.

In 1952 J.O. Wheeler did a geological survey of the Bonnet Plume River area and reported chalcopyrite and pyrite disseminated through diorite on Pinguicula Creek and in float in Black Canyon Creek in the watershed of Corn Creek.

S.L. Blusson and D.J. Tempelman-Kluit, working for the Geological Survey of Canada on Project 680119 in 1969, did a stratigraphic study of the Nadaleen map-area (106-C) and reported no new mineral occurrences. This project did re-define some of the Ordovician-Devonian units, the dark shale and carbonate facies, and gave structural interpretation to the region.

The G.S.C. has recently completed a more detailed mapping program of this area in 1972. The preliminary geological maps are expected to be released in 1975.

The Bonnet Plume area has been prospected by individuals and companies, but until recently there were no reports of lead-zinc mineralization being found in the Goz Creek area. In 1967 there was an extensive exploration program carried out by Bonnet Plume Mines Ltd. on a copper-cobalt-silver occurrence some 45 miles to the northwest of the Goz Creek area. A winter tote road was constructed to the property from Mayo. Between 1966 and 1969, an extensive exploration program consisting of geological, geophysical and geochemical surveys as well as diamond drilling was completed on the property. There has been no additional work done on the Bonnet Plume Mines property since that time.

Barrier Reef Resources, through exploration work in the summer of 1973 by Cordilleran Engineering and using a spray-type chemical field kit, located extensive showings of zinc oxide and underlying sphalerite mineralization with lesser amounts of galena near Goz Creek. The showings were found along a general east-west strike at intervals over several miles north of the Bonnet Plume River.

Cypress Resources found substantial zinc mineralization in one drill hole in late 1973 and did further work in the 1974 season. Barrier Reef are currently reported diamond drilling on their Goz Creek property.

No previous exploration work is known on the TROUT mineral claims.

Useful references pertinent to the area are as follows:

Report on Corn Creek Property for Barrier Reef Resources Ltd. (N.P.L.), by C.M. Hamilton of Cordilleran Engineering Limited, December 1973;

Geological Survey of Canada Paper 53-7, pp 8, 15, 20-23, 39;

Geological Survey of Canada Paper 70-1A, pp 29-32 (Project 680119);

Topographic Map - Nadaleen River 106-C (Scale 1" = 4 miles);

N.T.S. Air Photos (106-C) - A-20683; 35,36,65,64;

Yukon Claim Plans 106-C-7 and 106-C-10.

GEOLOGY

REGIONAL:

Lithological units of the Selwyn Basin geosyncline occupy the general Bonnet Plume River area. They range in age from Proterozoic units east of the Bonnet Plume to Ordovician-Devonian horizons north and east of the Bonnet Plume River.

A grey limestone unit was recognized as (DL) by J.O. Wheeler in 1952 but was not classified as to age. This carbonate unit (DL) and the associated black shales was mapped in 1969 as Unit 9 striking north-south along the north branch of Corn Creek.

Mapping by the Geological Survey of Canada during the field season of 1969 revised and extended the distribution of the

Paleozoic sedimentary facies in the Bonnet Plume River area particularly Unit 9.

PROPERTY:

Unit 9 is subdivided into three lithological units which are recognized on the north side of the Bonnet Plume River in the area of the TROUT claim group. These are shale, dolomite, dolomite and dolomitic limestone, quartzite members in ascending order of age relationship. Minor horizons of conglomerate, sandstone and siliceous dolomite occur within the stratigraphic sequence.

Age of the rock units is not clear but G.S.C. Project 680119 classified Unit 9 as Ordovician-Devonian and overlying Unit 7 of Cambrian-PreCambrian age.

The sedimentary sequence exposed on the southerly facing slope bordering the north side of Bonnet Plume River is generally a fairly uniform series in regard to thickness, continuity and attitude. The average strike of the beds is N65°W with an overall dip of approximately 50°N although locally it can be much steeper.

Generally the contact between the dolomite and overlying shales is marked by a coarse, poorly sorted conglomerate composed of round to subangular grey dolomite fragments varying up to several inches in diameter in a dark brown argillaceous matrix. Project 680119 undertaken by the Geological Survey of Canada suggest an important facies change between Units 7a, 9 and 11 strikes northwesterly through the claim group.

H
 CU 38
 Pb 34
 Zn 32
 CU 37
 Pb 35
 Zn 33
 CU 20
 Pb 21
 Zn 19
 CU 33
 Pb 30
 Zn 28

53	54	47	48	35	36	17	18
51	52	45	46	49	34	15	16
49	50	43	44	21	22	13	14

"TROUT CLAIMS"

MAP SHEET #10007

GEO. CHEM. SAMPLE
 STATIONS.

CON-WOLF AIREX
 BOX 278

FARD V.T.

AUG. 1974

This plan received
 from Egan Kreuger
 by hand on June 23,
 1975.

Donald W. Tully

29	30	11	12
21	28	9	10
40	35	26	7
41	23	24	5
38	21	22	3
37	19	20	1
37	12	13	2

CU 27
 Pb 25
 Zn 23
 CU 14
 Pb 12
 Zn 10
 X 28
 Pb 25
 Zn 23
 ↑
 R 11

GEOCHEMICAL SURVEY

Indirect evidence in the form of strongly anomalous geochemical soil sample results for copper, lead and zinc and favourable geological horizons, is abundant on the claims.

Anomalous values in copper (3000 ppm) occur at the junction of TROUT #3, 5, 22 and 24.

Anomalous values for zinc (3000 plus ppm) and lead (120 plus ppm) occur at the north end of the claim group at TROUT claims #17 and 36.

Anomalous indications for zinc and lead occur in a broad arcuate zone trending from TROUT claims # 11, 12 and 30 some 7500 feet southeastward through TROUT #1, 2 and 20 at the south boundary of the claim group.

Detailed geochemical soil sampling should be done in the immediate area of each of the anomalous areas.

The method of survey control, soil sampling technique and sample analysis are not known to the writer although there is probably little doubt standard practice was applied in each instance. My information is that personnel connected with Con-Wolf Airex at Faro, Yukon Territory, did the field work and analyses.

RECOMMENDATIONS

The following program is proposed to explore the mineral potential of the copper-lead-zinc anomalous areas and establish target zones for further study.

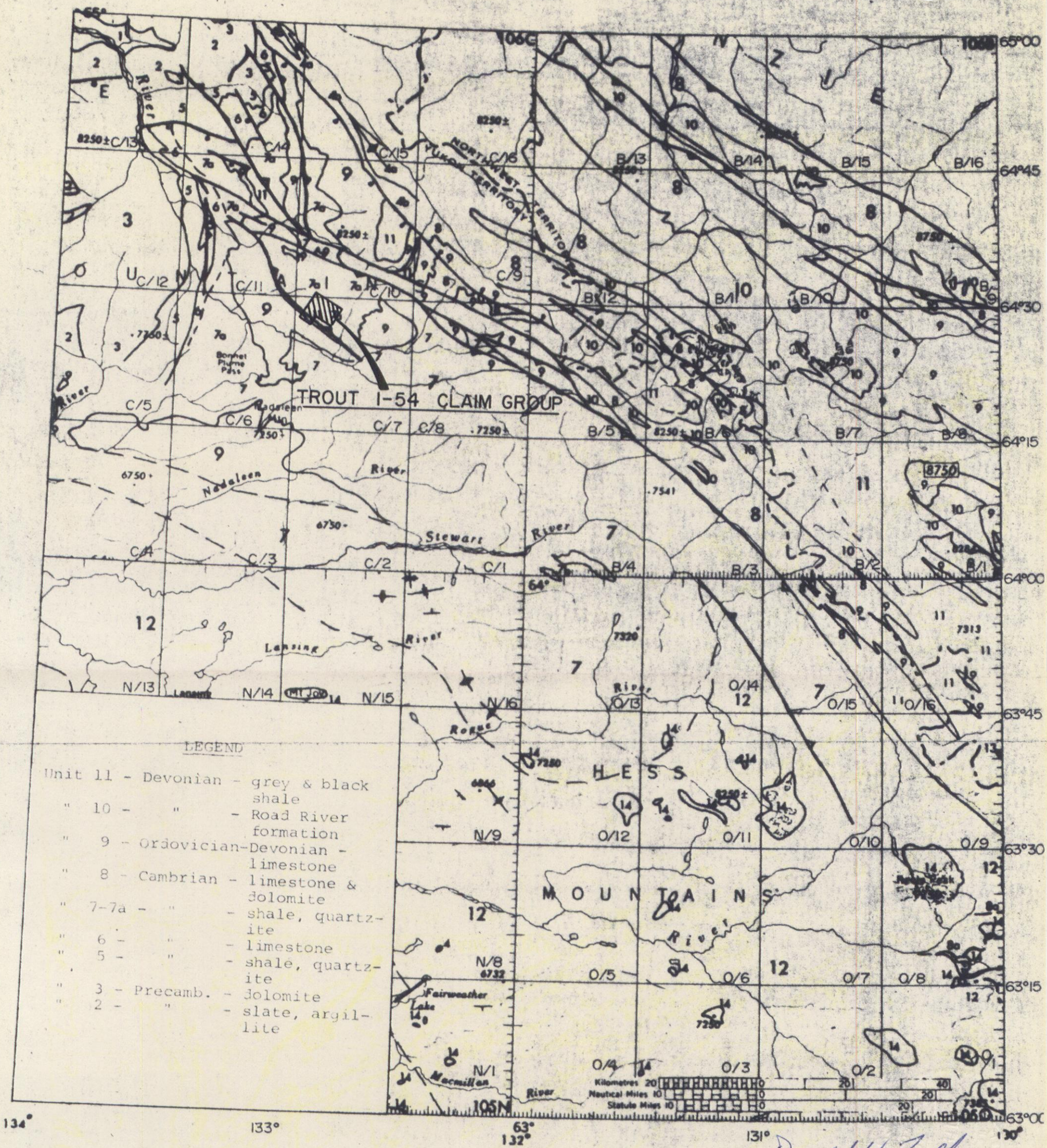


Figure 1. Geological sketch map of Lansing (105 N), Niddery Lake (105 O), Bonnet Plume (106 B) and Nadaleen River (106 C) map-areas, Yukon and District of Mackenzie.

PHASE I

- (a) Mound and tag the claim posts.
- (b) Survey the location lines over the 30 claim group to establish the property perimeter using chain and compass.
- (c) Layout a grid and take geochemical soil samples using 50 metre centres over the anomalous indications in the area of TROUT claims #17 and 36 at the north boundary. Also grid the area extending southward from TROUT claims #11, 12 and 30 to the south boundary.
- (d) Prepare an engineering evaluation report.

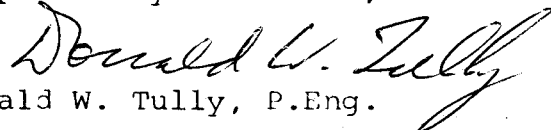
PHASE II

Any anomalous areas resulting from the Phase I exploration program should be considered for diamond drill testing.

ESTIMATED COSTS

(1) Camp and helicopter transportation	\$ 1,750.00
(2) Mound and tag claim posts	500.00
(3) Establish a control grid on 50 metre centres and take soil samples (60 km x 20 samples/km x \$4.50/sample)	5,400.00
(4) Analyses (1200 soil samples x \$2.50/sample for copper, lead, zinc)	3,000.00
(5) Engineering, supervision and evaluation	<u>500.00</u>
ESTIMATED COST TOTAL:	\$11,150.00
	=====

Respectfully submitted,



Donald W. Tully, P.Eng.

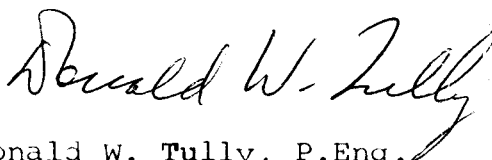
July 10, 1975

CERTIFICATE

I, DONALD WILLIAM TULLY, of the Municipality of West Vancouver, Province of British Columbia, hereby certify as follows:

1. I am a Consulting Geologist with an office at Suite 102, 2222 Bellevue Avenue, West Vancouver, British Columbia.
2. I am a registered Professional Engineer in the Provinces of British Columbia and Ontario.
3. I graduated with a degree of Bachelor of Science, Honours Geology, from McGill University in 1943.
4. I have practiced my profession for thirty years.
5. I have no direct, indirect or contingent interest in the TROUT mineral claims nor in the shares of OLYMPIAN INTERNATIONAL RESOURCES LTD., nor do I intend to receive any interest.
6. This report dated July 10th, 1975, is based on a personal knowledge of the area of the TROUT mineral claims during the summer of 1974.

DATED at West Vancouver, British Columbia, this 10th day of July, 1975.



Donald W. Tully, P.Eng.
Consulting Geologist

A P P E N D I X

DON TULLY ENGINEERING LTD.
SUITE 102 - 2222 BELLEVUE AVENUE
WEST VANCOUVER, BRITISH COLUMBIA
V7V 1C7

TIME - COST DISTRIBUTION

<u>ITEM</u>	<u>DESCRIPTION</u>	<u>AMOUNT</u>
Territorial Airways (Invoice #0946)	- helicopter transportation	\$ 300.00 ✓
As per Con-Wolf Airex Ltd. letter dated August 29, 1974 And as per Form "D" #'s Q64548-59	- wages	\$1,950.00 ✓
Anvil Mining Corporation Ltd.	- assaying and chemicals	\$ 153.00 ✓
Don Tully Engineering Ltd.	- maps, drafting, report prepara- tion .	\$ 250.00
	TOTAL.....	<u>\$2,653.00</u> ✓ =====

STATUTORY DECLARATION

I, DONALD WILLIAM TULLY, do hereby make oath and swear, that I make this solemn declaration conscientiously believing it to be true, and knowing that it is of the same force and effect as if made under oath and by virtue of the "Canada Evidence Act". But I was not present on the TROUT claims when the work was done and am not in a position to swear that the samples were taken at the locations shown on the enclosed map.

DECLARED before me at the City of)
 Vancouver, in the Province of)
 British Columbia, this 14th day)
 of July , 1975.)

Rennis B. Peterson)

Donald W. Tully
DONALD W. TULLY

DON TULLY ENGINEERING LTD.
SUITE 102 - 2222 BELLEVUE AVENUE
WEST VANCOUVER, BRITISH COLUMBIA
V7V 1C7

A Notary Public in and for
the Province of British Columbia



Con-Wolf Airex Ltd.

Box 278, Faro, Yukon Territory = Phone 994-2457

August 29, 1974

Mr. E. Kruger
Olympian International Resources
Ste. 514
355 Burrard Street
Vancouver, British Columbia

Prospecting TROUT Claims

Bonnet Plume River Area, Yukon

2 Men	13 days @ 150 per day	\$1950.00
	50 assays @ 2.50	125.00
	Sample Preparation	12.00
	2 Bottles Zinc Dope @ 8.00	<u>16.00</u>
		\$2103.00

Prompt payment would be appreciated.

ANVIL MINING CORPORATION LTD.

Sample Assay Sheet

Production Date—

AUG 28/74

Sample Origin— *CON WOLF AIREX - TROUT*

Sample Number	Pb	Zn	Fe	HClO ₄ Cu	Ba	S	Mn			
<i>RM 1</i>	<i>77 ppm</i>	<i>150 ppm</i>		<i>32 ppm</i>						
<i>2</i>	<i>2800</i>	<i>9000</i>		<i>51</i>						
<i>3</i>	<i>180</i>	<i>740</i>		<i>3000</i>						
<i>5</i>	<i>62</i>	<i>540</i>		<i>210</i>						
<i>6</i>	<i>750</i>	<i>120</i>		<i>33</i>						
<i>7</i>	<i>1950</i>	<i>5000</i>		<i>34</i>						
<i>9</i>	<i>210</i>	<i>770</i>		<i>15</i>						
<i>10</i>	<i>53</i>	<i>60</i>		<i>10</i>						
<i>(SILT) 11</i>	<i>24</i>	<i>63</i>		<i>10</i>						
<i>12</i>	<i>6000</i>	<i>17600</i>		<i>35</i>						
<i>13</i>	<i>6400</i>	<i>14,800</i>		<i>57</i>		<i>Location Not Known</i>				
<i>14</i>	<i>1500</i>	<i>16,800</i>		<i>25</i>		<i>"</i>	<i>"</i>	<i>"</i>		
<i>15</i>	<i>220</i>	<i>9200</i>		<i>17</i>	<i>✓</i>					
<i>16</i>	<i>120</i>	<i>550</i>		<i>14</i>	<i>✓</i>					
<i>17</i>	<i>120</i>	<i>410</i>		<i>16</i>	<i>✓</i>					
<i>18</i>	<i>80</i>	<i>170</i>		<i>10</i>	<i>✓</i>					
<i>19</i>	<i>430</i>	<i>2400</i>		<i>12</i>	<i>✓</i>					
<i>RM 40</i>	<i>600</i>	<i>6000</i>		<i>17</i>	<i>✓</i>					
<i>SILTS</i>										
<i>A1</i>	<i>34</i>	<i>260</i>		<i>31</i>		<i>Location Not Known</i>				
<i>A2</i>	<i>38</i>	<i>215</i>		<i>30</i>		<i>"</i>	<i>"</i>	<i>"</i>		
<i>A3</i>	<i>24</i>	<i>180</i>		<i>40</i>		<i>"</i>	<i>"</i>	<i>"</i>		

Assayer— *E.L.C.*

ANVIL MINING CORPORATION LTD.

Sample Assay Sheet

Production Date: *AUG 28/74*

Sample Origin: *CON WOLF AIRER - TROUT*

<i>SOLLS</i>	Pb	Zn	Fe	<i>HClO₄</i> Cu	Ba	S	Mn			
<i>RM A1</i>	<i>33 ppm</i>	<i>130 ppm</i>		<i>24 ppm</i>						
<i>A 2</i>	<i>32</i>	<i>130</i>		<i>26 ✓</i>						
<i>A 3</i>	<i>40</i>	<i>85</i>		<i>28</i>						
<i>A 4</i>	<i>32</i>	<i>79</i>		<i>20</i>						
<i>A 5</i>	<i>50</i>	<i>19</i>		<i>30</i>						
<i>A 6</i>	<i>36</i>	<i>32</i>		<i>41</i>						
<i>A 7</i>	<i>29</i>	<i>160</i>		<i>23</i>						
<i>A 8</i>	<i>24</i>	<i>79</i>		<i>18</i>						
<i>A 9</i>	<i>39</i>	<i>76</i>		<i>11 ✓</i>						
<i>A 10</i>	<i>31</i>	<i>95</i>		<i>27 ✓</i>						
<i>A 11</i>	<i>54</i>	<i>85</i>		<i>38 ✓</i>						
<i>B 1</i>	<i>25</i>	<i>72</i>		<i>14</i>						
<i>B 2</i>	<i>27</i>	<i>70</i>		<i>12</i>						
<i>B 3</i>	<i>31</i>	<i>120</i>		<i>23</i>						
<i>B 4</i>	<i>41</i>	<i>170</i>		<i>32</i>						
<i>B 5</i>	<i>30</i>	<i>180</i>		<i>23</i>						
<i>B 6</i>	<i>26</i>	<i>130</i>		<i>17 ✓</i>						
<i>B 7</i>	<i>21</i>	<i>200</i>		<i>15</i>						
<i>B 8</i>	<i>33</i>	<i>190</i>		<i>24 ✓</i>						
<i>B 9</i>	<i>39</i>	<i>91</i>		<i>25 ✓</i>						
<i>B 10</i>	<i>29</i>	<i>43</i>		<i>24 ✓</i>						
<i>B 11</i>	<i>54</i>	<i>57</i>		<i>37 ✓</i>						
<i>W 10</i>	<i>28</i>	<i>255</i>		<i>25</i>		<i>Location Not Known</i>				
<i>W 11</i>	<i>33</i>	<i>135</i>		<i>20</i>		<i>"</i>	<i>"</i>	<i>"</i>		
<i>W 12</i>	<i>27</i>	<i>142</i>		<i>19</i>		<i>"</i>	<i>"</i>	<i>"</i>		
<i>W 13</i>	<i>31</i>	<i>152</i>		<i>17</i>		<i>"</i>	<i>"</i>	<i>"</i>		
<i>W 14</i>	<i>35</i>	<i>163</i>		<i>16</i>		<i>"</i>	<i>"</i>	<i>"</i>		
<i>W 15</i>	<i>22</i>	<i>140</i>		<i>25</i>		<i>"</i>	<i>"</i>	<i>"</i>		
<i>W 16</i>	<i>41</i>	<i>127</i>		<i>24</i>		<i>"</i>	<i>"</i>	<i>"</i>		
				<i>23</i>						

Total 50

Assayer: *E.C.*



ROSS RIVER
YUKON
CANADA

FIXED AND ROTARY
WING AIRCRAFT

terr-air LTD.
(TERRITORIAL AIRWAYS)

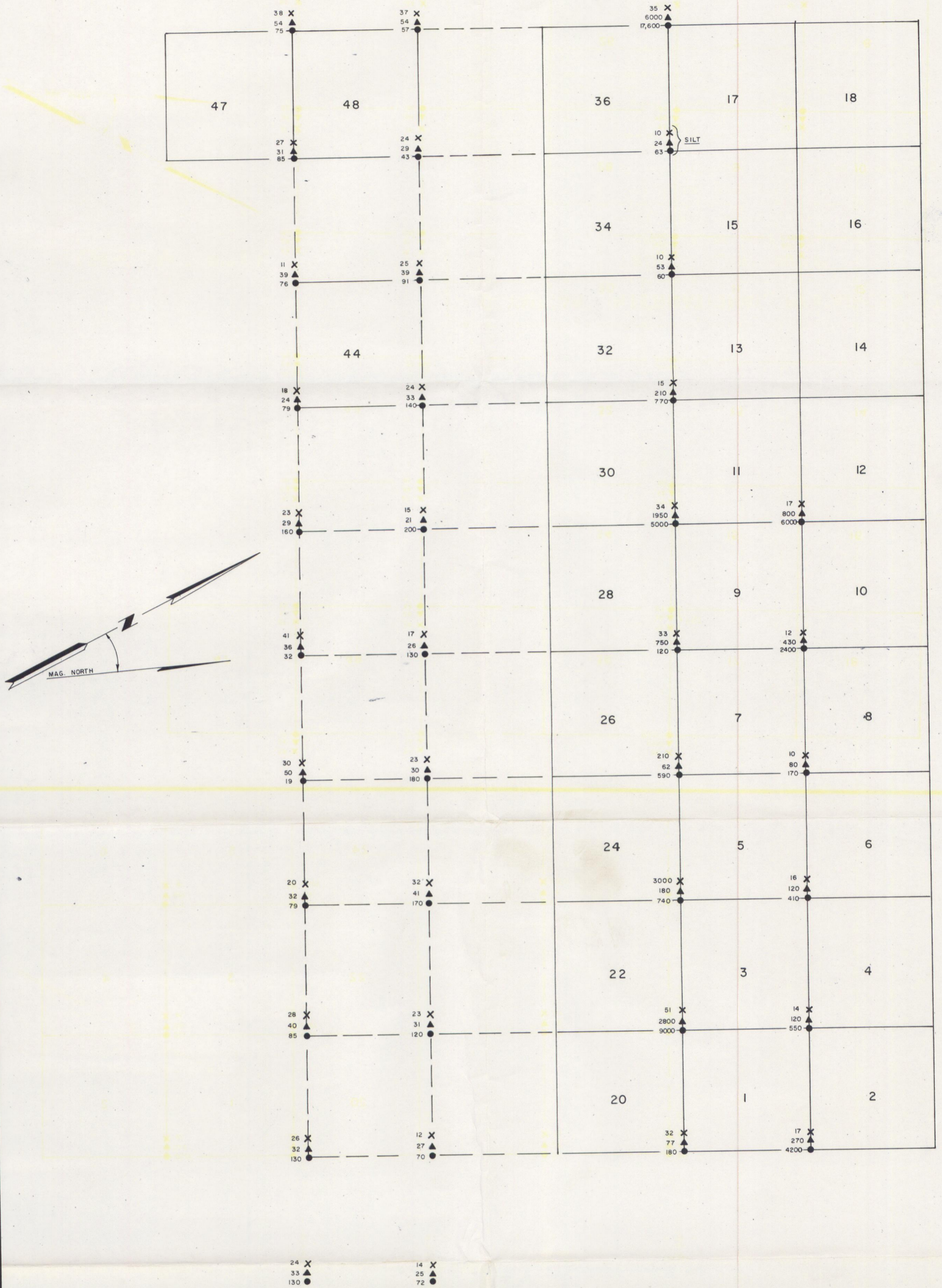
PHONE: 969-0640 FAX: 894-3783
TELEX: TERR-AIR ROSS

PROJECT: _____ CHARTER TICKET No. **0948**
 AIRCRAFT MDN Husky DATE Aug 11/74
 NAME Pelly Sinoir
 ADDRESS _____

From	MILES	HOURS	CARGO	PASSENGER/REMARKS
to				
to KASABIA	170			2 Pax + GWR
EXPRESS	40			
KASABIA				
	210			

SPECIAL INSTRUCTIONS	PER HOUR			
		210	• 1/40	PER MILE
			WAITING TIME	PER HOUR
			EXTRA LANDINGS	PER LANDING
			OTHER	6.50
			TOTAL CHARGES	300.50

[Signatures]
 Pilot's Signature: _____ Base: _____ Charterer's Authorization: _____



OLYMPIAN INTERNATIONAL RESOURCES LTD.

TROUT CLAIM GROUP
BONNET PLUME RIVER AREA
MAYO MINING DISTRICT YUKON

PLAN SHOWING
RECONNAISSANCE GEOCHEMICAL SOIL SAMPLE RESULTS
 DRAWN FROM YUKON CLAIM PLAN 106-C-7

Scale: 1 cm. = 100 m.

JULY 10, 1975

TO ACCOMPANY REPORT DATED JUNE 30, 1975 BY DONALD W. TULLY, P. Eng.

DRAWN FROM INFORMATION BELIEVED RELIABLE BUT NOT GUARANTEED.

Donald W. Tully