

1975 DIAMOND DRILLING REPORT  
ON THE TART CLAIMS



Dawson Mining District  
Yukon Territory



N.T.S. 116-B-13

Latitude: 64° 50' N

Longitude: 139° 52' W

This report has been examined by the Geological Survey of Canada and is recommended to the Canadian Government to be considered as representing work in the amount of

\$46,671-64  
D. B. Craig  
Resident Geologist  
~~Resident Mining Engineer~~

Considered as representation work under Section 53 (6) Yukon Quartz Mining Act.

[Signature]  
Recorder  
By: Commissioner of Yukon Territory

P. Dean

CYPRUS ANVIL MINING CORPORATION

October, 1975

TABLE OF CONTENTS

	<u>Page</u>
List of Claims	
Introduction . . . . .	1
Summary and Conclusions . . . . .	2
Proposed Exploration . . . . .	2

FIGURES

Figure 1	Key Map
Figure 2	Staking Sketch
Figure 3	Diamond Drill Hole Locations
Figure 4	DDH 75-T-1 - Drill Log Diagram
Figure 5	DDH 75-T-2 - Drill Log Diagram
Figure 6	DDH 75-T-3 - Drill Log Diagram
Figure 7	DDH 75-T-4 - Drill Log Diagram

APPENDICES

Appendix I	Drill Logs
Appendix II	List of Personnel
Appendix III	Summary of Costs
Appendix IV	Affidavit Supporting Summary of Costs
Appendix V	Vouchers Supporting Summary of Costs

LIST OF CLAIMS

<u>Claim</u>	<u>Grant Numbers</u>	<u>Recording Date</u>
TART 1-80	Y90229-Y90308	November 6, 1974

Cyprus Anvil Mining Corporation

330, 355 Burrard Street  
Vancouver, British Columbia  
V6C 2G8

1975 DIAMOND DRILLING REPORT  
ON THE TART CLAIMS

INTRODUCTION

The Tart claims were staked during the fall of 1974, when highly anomalous results were obtained from silt and soil samples taken by the Reef Project. Prospecting on the claims during June of this year outlined two zones of sphalerite mineralization in talus and outcrops, and a substantial amount of exploratory work was completed during the balance of the season. This work included grid soil sampling, geologic mapping, and diamond drilling of four holes totalling 1,623 feet. The portion of the work relating to the diamond drilling is covered by this assessment report.

The claims are located on a north-flowing tributary of the Monster River, at latitude  $64^{\circ}50'$  N x longitude  $139^{\circ}52'$  W. The claim group lies seven miles northwest of the OZ claims, three miles east of the OG claims, and four miles east of the UG claims. Other claim groups have been staked to the east and south of the Tart claims. Access to the claim group is by helicopter from Dawson or from the airstrip at Clinton Creek, which is the nearest road point. The elevations on the claims range from 3,500 feet to 5,000 feet and vegetation cover is light.

The drill core has been stored in a core rock at the base camp on the OZ claims, ten miles south of the Tart claims at latitude  $64^{\circ}44'$  N x longitude  $139^{\circ}43'$  W.

**CYPRUS ANVIL**

SUMMARY AND CONCLUSIONS

Diamond drilling on the main showing on the claims failed to intersect economic grades of mineralization. These drill holes, plus surface outcrop mapping, suggest that there is no reasonable hope of finding economic widths or grades of mineralization on this part of the property.

PROPOSED EXPLORATION

No further diamond drilling is recommended for the claims at this time. Geochemical anomalies on parts of the claim group away from the main showing may warrant more investigation, which should take the form of detailed prospecting and hand pitting or trenching. This work should be considered to be of low priority, to be done only if work on adjacent claim groups enhances the potential of the district as a whole.

Respectfully submitted,

*P. M. Dean*

P. DEAN

October, 1975

*Ampery*

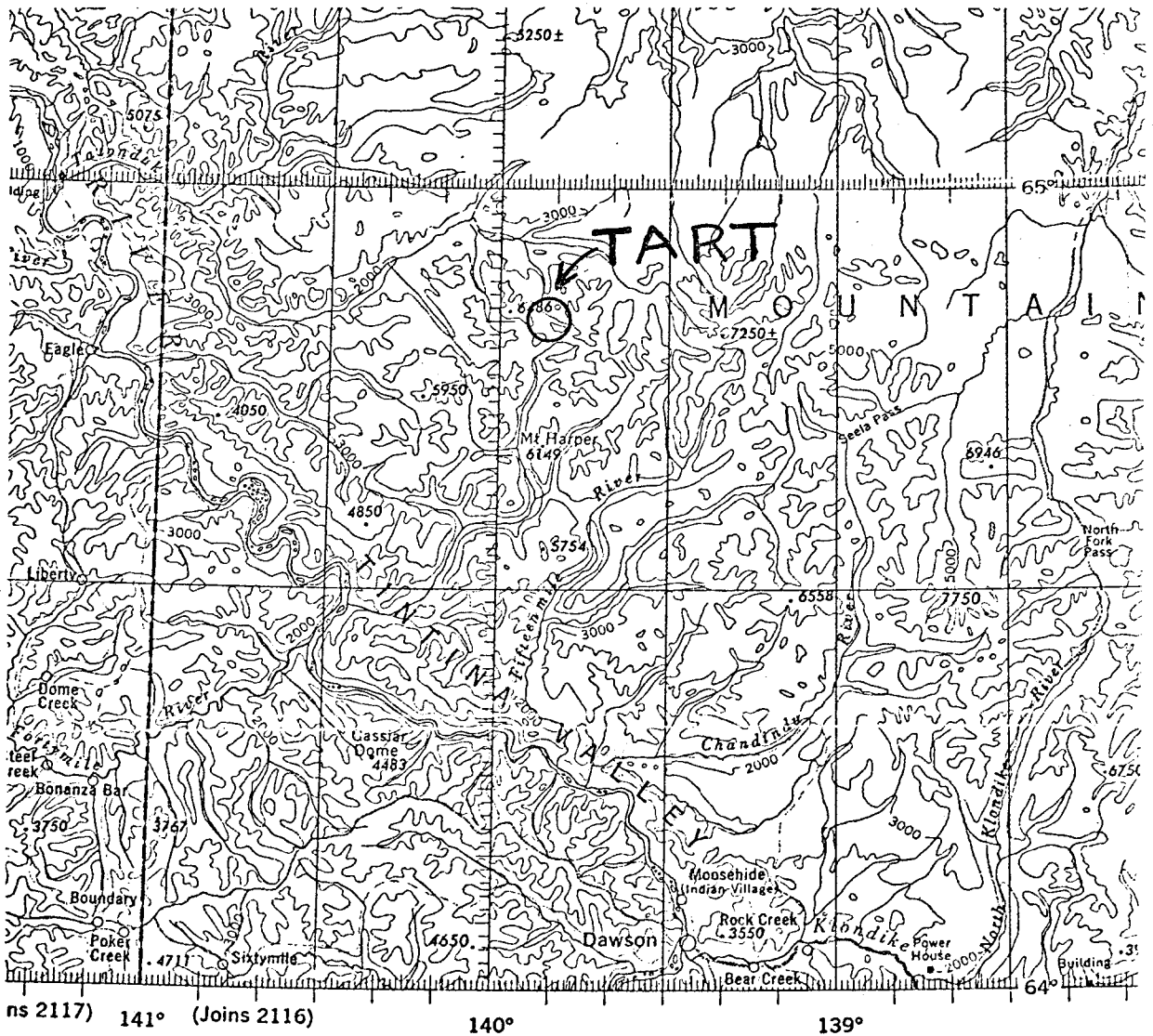


Figure 1:  
 TART CLAIM GROUP  
 KEY MAP  
 Scale: 1 inch = 16 miles

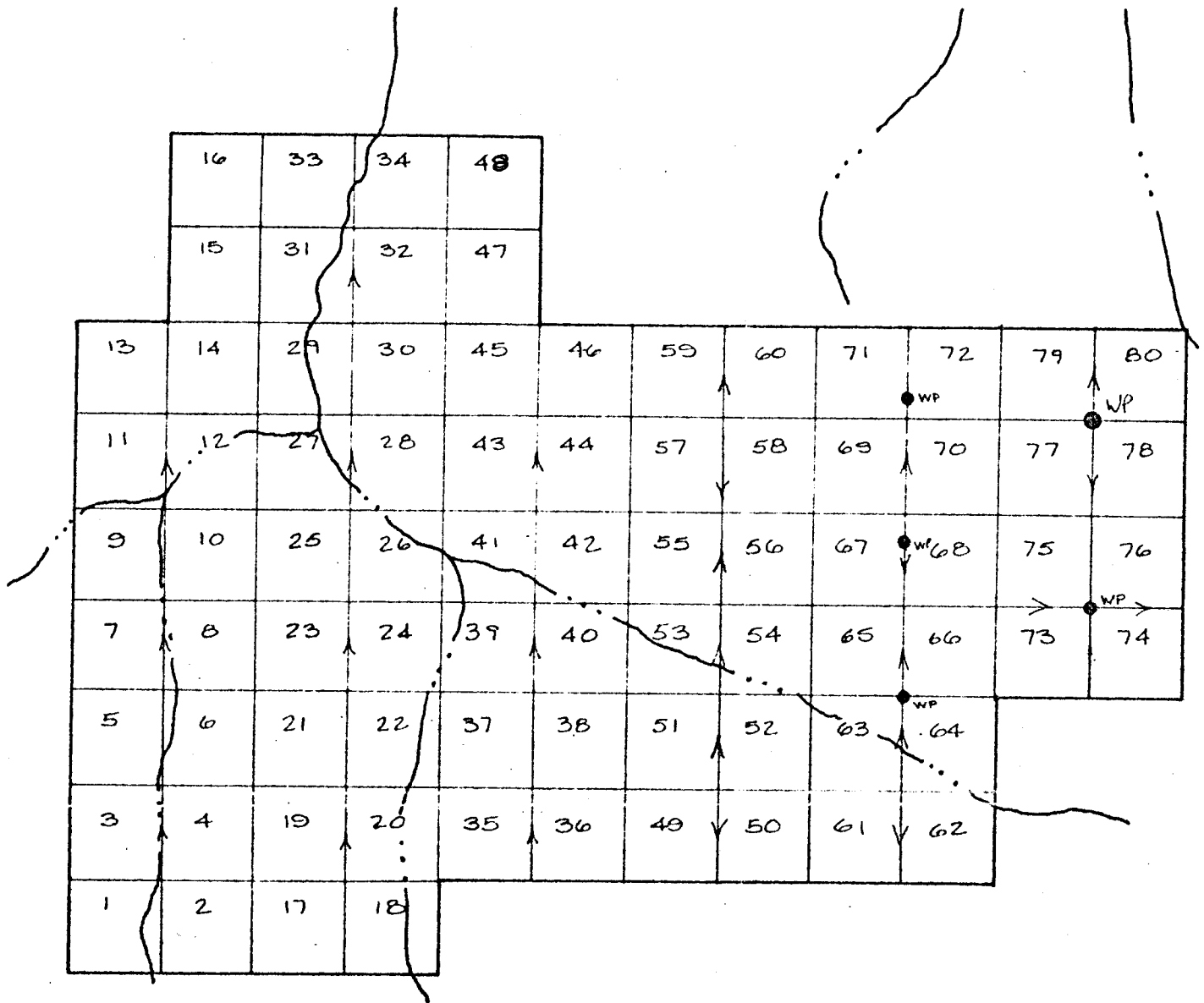


FIGURE 2 :

STAKING SKETCH SHOWING:		
TART 1-80 M. C.		
SCALE	1" = 1/2 mi	Hosford, Impey And Welter, Ltd. Box 4418 Whitehorse, Yukon
DRAWN	RR	
DATE	OCT 29 1974	
NO.		

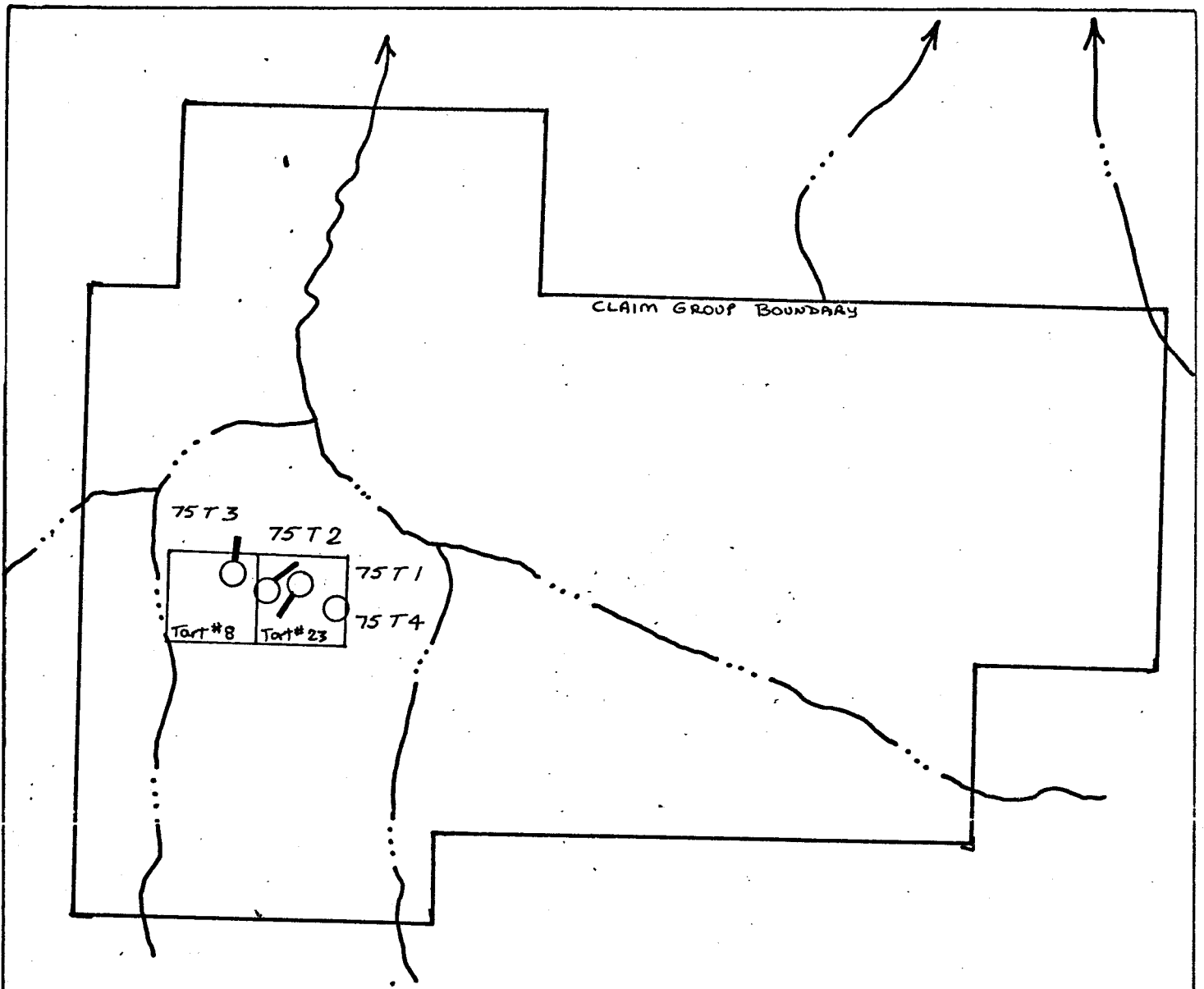


Figure 3
CYPRUS-ANVIL MINING CORP
TART CLAIM GROUP
DRILL HOLE LOCATIONS
Scale: 1" = 1/2 mi

APPENDIX I - DRILL LOGS















## DIAMOND DRILL RECORD,

HOLE NO. 75-T-2

PROPERTY \_\_\_\_\_

TART GROUP \_\_\_\_\_

SHEET NUMBER \_\_\_\_\_

SECTION FROM \_\_\_\_\_

TO \_\_\_\_\_

STARTED \_\_\_\_\_

LATITUDE \_\_\_\_\_

DATUM \_\_\_\_\_

COMPLETED \_\_\_\_\_

DEPARTURE \_\_\_\_\_

BEARING \_\_\_\_\_

ULTIMATE DEPTH \_\_\_\_\_

ELEVATION \_\_\_\_\_

DIP \_\_\_\_\_

PROPOSED DEPTH \_\_\_\_\_

DEPTH FEET	CORE RECOV	DESCRIPTION	CORE SAMPLE NO.	FOOTAGE	CORE ASSAYS				SLUDGE SAMPLE NO.	FOOTAGE	SLUDGE ASSAYS			
					AG.	CU.	PB.	ZN.			AG.	CU.	PB.	ZN.
300-320	90%	Fairly abundant (2%) yellow-red sphalerite as fracture filling (calcite) over section. Medium grey dolomite, thin bedded. So. at 10° to core axis.	4669	(assayed 300-305)				3.78						
			4670	(assayed 305-310)				3.06						
			4671	(assayed 310-315)				3.00						
			4672	(assayed 315-320)				1.60						
320-332	90%	Moderately broken core. Medium grey thin bedded dolomite. Calcite fracture fillings and traces of sphalerite, pyrite. So. at 10° to core axis.		320-325	Rx geochem	120	27,888							
				325-330	Rx geochem	144	12,672							
332-455	90%	Good recovery, thin bedded, medium-grey dolomite. Traces of red sphalerite. 2" fracture fillings ZnS, pyrite, at 424, 425, 430. Pyrite calcite filled breccia at 364'. So. at 5° to core axis.		450-455	Rx geochem	264	4,656							
455-461	90%	Medium grey dolomite, thin bedded. Fairly abundant (2%) sphalerite (yellow and red) occurs as fracture	4668	(assayed 455-460)			4.08							
				460-465	Rx geochem	52	15,792							



## DIAMOND DRILL RECORD,

HOLE NO. 75-T-3PROPERTY TART GROUPSHEET NUMBER 116 B 13

SECTION FROM \_\_\_\_\_ TO \_\_\_\_\_

STARTED \_\_\_\_\_

LATITUDE 28 S

DATUM \_\_\_\_\_

COMPLETED July 12, 1975

Geochem - PPM

DEPARTURE 8 WBEARING 355°ULTIMATE DEPTH 286

Assay - %

ELEVATION \_\_\_\_\_

DIP -63°

PROPOSED DEPTH \_\_\_\_\_

DEPTH FEET	CORE RECOV	DESCRIPTION	CORE SAMPLE NO.	FOOTAGE	CORE ASSAYS				SLUDGE SAMPLE NO.	FOOTAGE	SLUDGE ASSAYS			
					AG.	CU.	PB.	ZN.			AG.	CU.	PB.	ZN.
0- 20		Overburden.												
20- 33	80%	Highly broken, medium-grey dolomite breccia, ferruginous calcite cemented, fairly abundant pyrite, sphalerite and traces of galena. Angular fragments. So. were evident at 50° to core axis. 2" band of calcite at 37.5'.	4682 4683 4684	(assayed 20-25) (assayed 25-30) (assayed 30-35)				1.02 1.48 11.22						
				35-40	Rx geochem	344	2,256							
				40-45	Rx geochem	1,040	7,200							
				45-50	Rx geochem	196	1,920							
				50-55	Rx geochem	136	2,688							
33- 52	80%	Moderately broken, medium-grey dolomite, thin bedded.		55-60	Rx geochem	1,120	9,408							
				50-65	Rx geochem	900	8,736							
52- 59	80%	Dolomite breccia, approximately 70% matrix, white calcite, angular fragments do not touch.												
59- 92	90%	Dark to medium-grey, thin bedded dolomite. Moderate calcite fracture fillings perpendicular to		72-77	Rx geochem	140	9,024							
			4685	(assayed 77-82)			2.25							



## DIAMOND DRILL RECORD,

HOLE NO. 75-T-3

PROPERTY \_\_\_\_\_ TART GROUP \_\_\_\_\_

SHEET NUMBER \_\_\_\_\_ SECTION FROM \_\_\_\_\_ TO \_\_\_\_\_ STARTED \_\_\_\_\_

LATITUDE \_\_\_\_\_ DATUM \_\_\_\_\_ COMPLETED \_\_\_\_\_

DEPARTURE \_\_\_\_\_ BEARING \_\_\_\_\_ ULTIMATE DEPTH \_\_\_\_\_

ELEVATION \_\_\_\_\_ DIP \_\_\_\_\_ PROPOSED DEPTH \_\_\_\_\_

DEPTH FEET	CORE RECOV	DESCRIPTION	CORE SAMPLE NO.	FOOTAGE	CORE ASSAYS				SLUDGE SAMPLE NO.	FOOTAGE	SLUDGE ASSAYS			
					AG.	CU.	PB.	ZN.			AG.	CU.	PB.	ZN.
133.5-165	85%	Moderately broken, medium-grey dolomite. Moderate calcite veining. So. at 2° to core axis. Trace sphalerite at 149' and 152'. Ferruginous calcite at 159-160'.												
165-200	80%	Highly broken, medium-grey dolomite. So. where visible parallel to core axis. Trace ZnS at 200'.												
200-223	80%	Highly broken, medium-grey dolomite. Chlorite slickensides parallel to core axis, abundant So. at 25° to core axis.												
223-285.5	85%	Highly broken to gouge zone (fault) dark - medium grey dolomite So. at 25° to core axis. Sphalerite with pyrite fracture fillings at 222, 255, 281.5 - 282. Caving in hole and closed. END OF HOLE.	4687	240-245 245-250 (assayed 250-255) 255-260 260-265 265-270 270-275 275-280 280-285	Rx geochem Rx geochem Rx geochem Rx geochem Rx geochem Rx geochem Rx geochem Rx geochem	44 116 4.20 1,060 244 108 196 232 440	256 15,120 4.20 13,440 2,352 1,392 5,760 5,184 18,816							





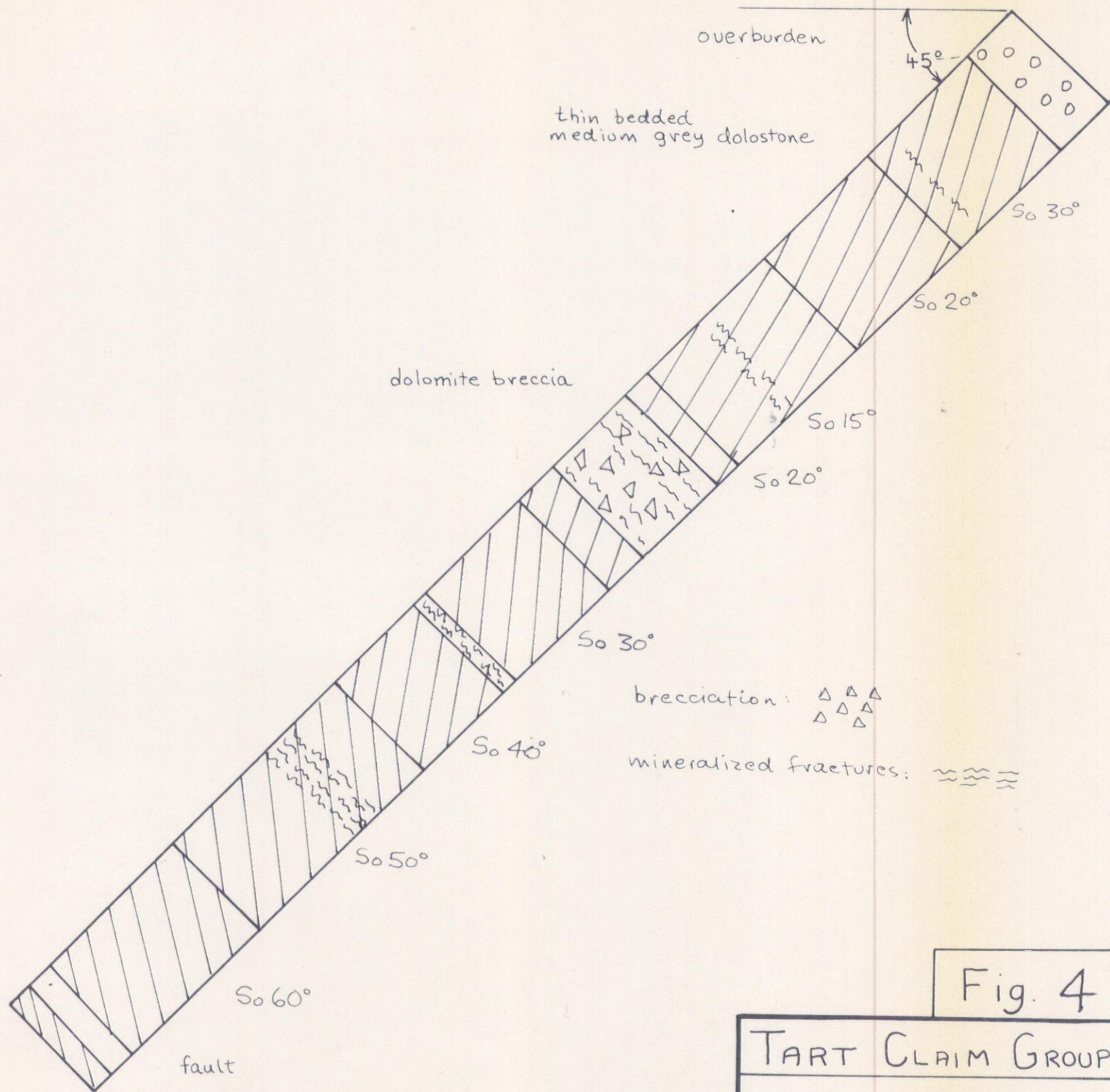


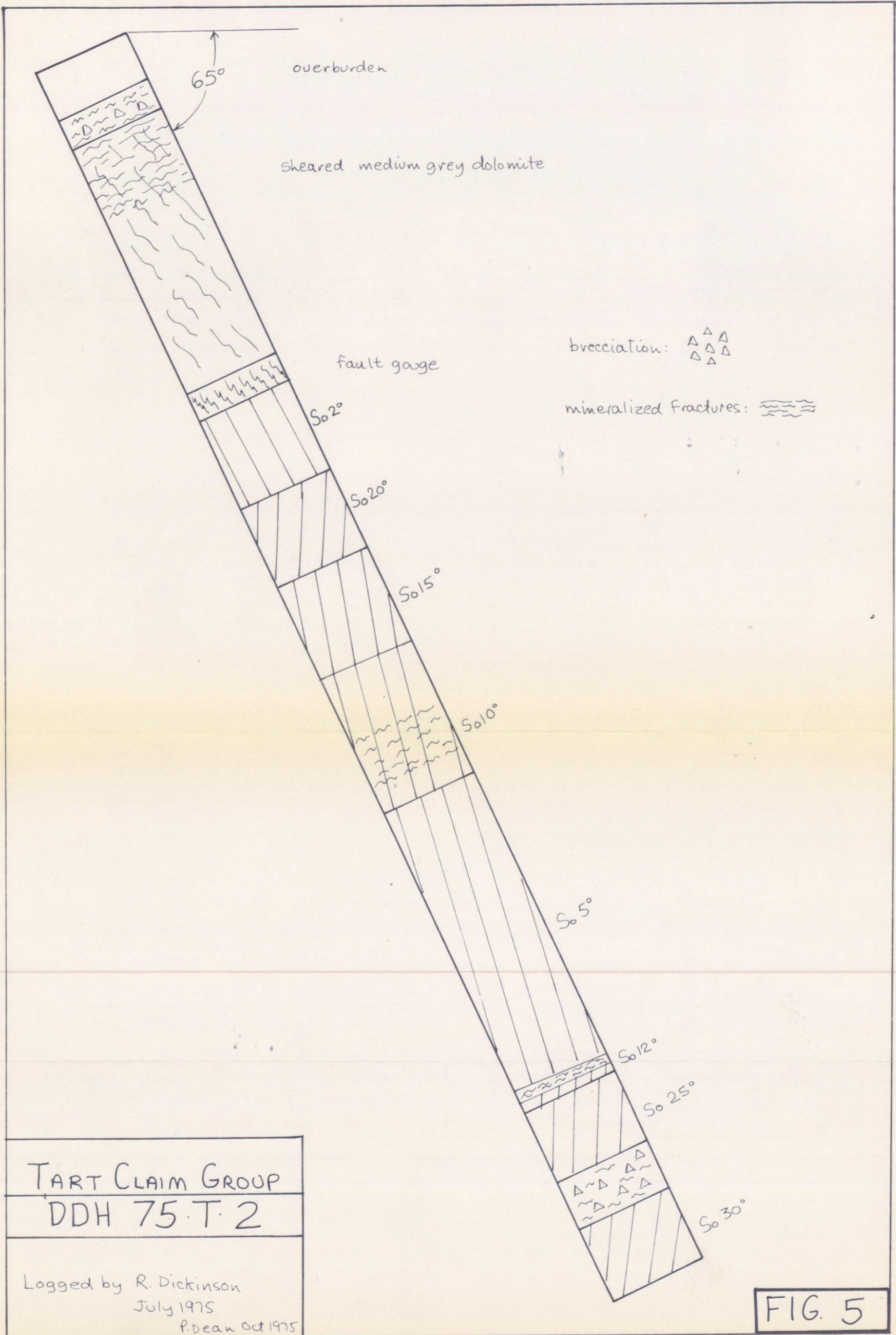
Fig. 4

TART CLAIM GROUP

DDH 75-T-1

Logged by: R Dickinson  
July 1975

Oct 75 P. Dean



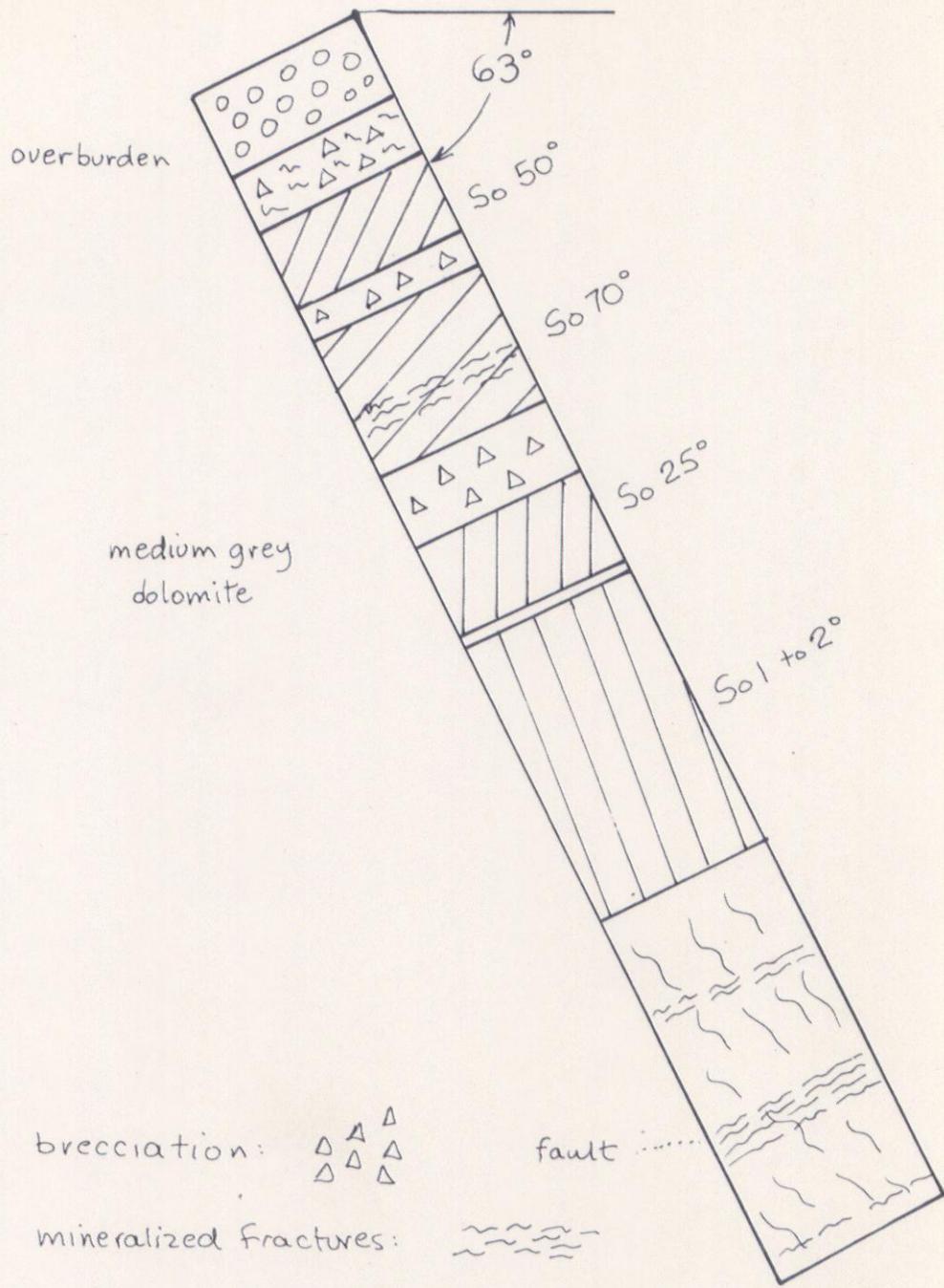


FIG. 6

TART CLAIM GROUP
DDH 75.T.3
Logged by R. Dickinson July 1975 P.D. Oct 75

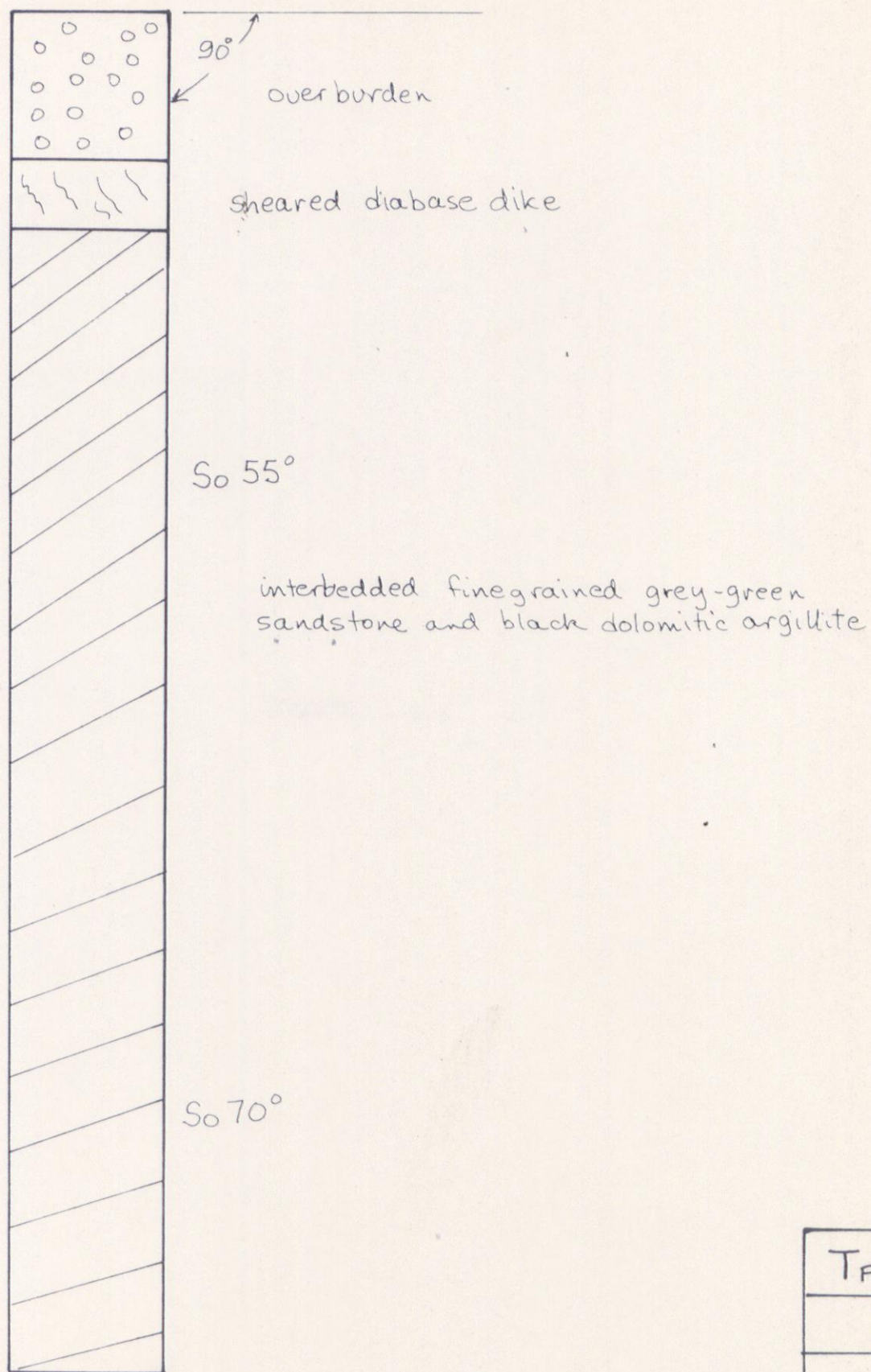


FIG. 7

TART CLAIM GROUP

DDH 75.T.4

Logged by R. Dickinson  
July 1975

P. Dean Oct '75