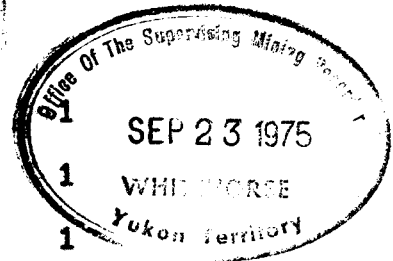


TABLE OF CONTENTS

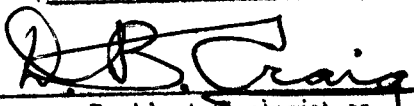
Location	
Location & Access	1
Geochemical Survey	1
Sampling Procedure	2
Conclusions	2
Personnel	3 deleted
Summary of Costs	4 deleted



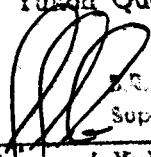
APPENDICES


- Soil Sample Location Map
- Claim Map

This report has been examined by the Geological Evaluation Unit and is recommended to the Commissioner to be considered as representation work in the amount of \$ 2726

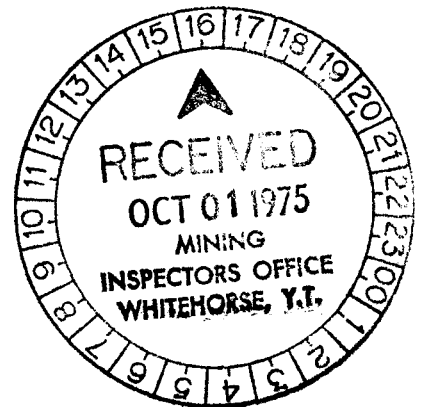

Resident Geologist or
~~Resident Mining Engineer~~

Considered as representation work under Section 53 (4) Yukon Quartz Mining Act.


E.C. BAXTER
Supervising Mining Recorder


Commissioner of Yukon Territory

2726



INTRODUCTION

Prospectors in the employ of Hudson Bay Exploration and Development Company carried out reconnaissance prospecting and soil sampling in the Irvine Lake area, in 1970.

Significant values in lead were found at the headwaters of Cabin Creek. Subsequent followup prospecting led to the discovery of high grade silver lead mineralization.

The Bingy 1 - 18 Claims, Grant numbers Y-83385 to Y-83352 were staked to cover the showings. Ownership of the claims was transferred to Hudson Bay Exploration in 1974.

LOCATION AND ACCESS

The 18 Bingy Claims are located at the headwaters of Cabin Creek, approximately 11 miles east of Marker Lake, at $60^{\circ} 31' N$, $130^{\circ} 40' W$. They are plotted on Claim sheet 105-B 10, in the Watson Lake Mining District.

Access is by Helicopter.

GEOCHEMICAL SURVEY

Grid 17 was established as a base for detailed investigations. A Base Line 14,000 feet in length was picketed from

44 south to 96 north. Section lines were run at 400 foot centers. from 8 north to 20 south and samples collected at 100 foot spacing. North south lines were run from 8 west to 16 east at the south end of the grid and from 8 west to 8 east at the north. A total of 724 samples were taken.

In addition all streams in the immediate vicinity were sampled. Lead values appear to be most significant and are plotted in parts per million on the accompanying map.

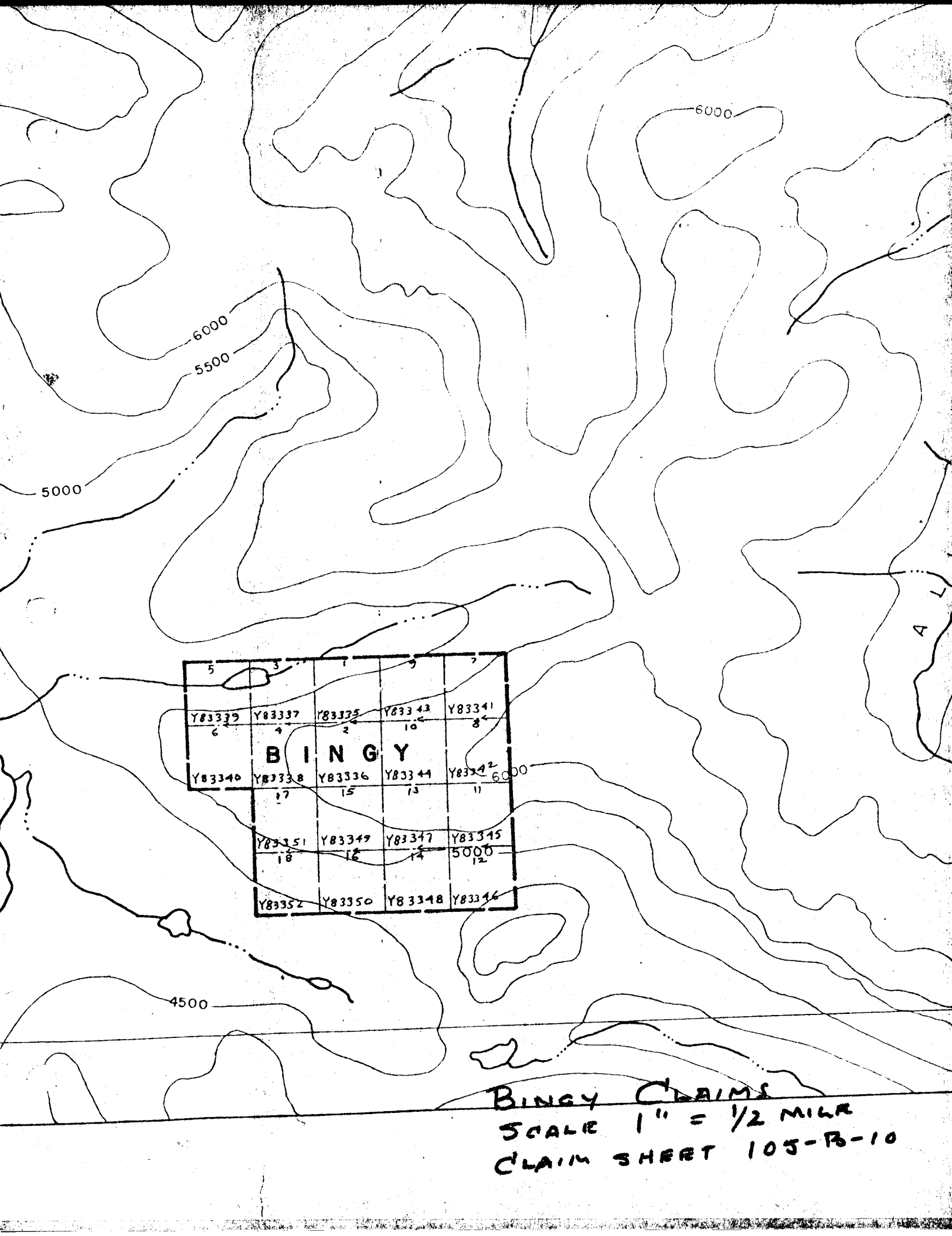
SAMPLING PROCEDURE

Where possible samples from streams are of active silt. Soil samples from the grid are taken below vegetation, usually at a depth of one foot.

All samples were assayed for copper, lead and zinc at Whitehorse Assay Office, First Avenue, Whitehorse, by atomic absorption. Results were given in parts per million in soil samples and percentage in rock samples.

CONCLUSIONS

Results of the geochemical survey indicate further work is warranted. Additional check sampling and geophysics will be undertaken in an effort to locate drill targets.



5	3	1	9	7
Y83339	Y83337	Y83335	Y83343	Y83341
6	4	2	10	8
B I N G Y				
Y83340	Y83338	Y83336	Y83344	Y83342
	17	15	13	11
Y83351	Y83349	Y83347	Y83345	
18	16	14	12	
Y83352	Y83350	Y83348	Y83346	

BINGY CLAIMS
 SCALE 1" = 1/2 MILE
 CLAIM SHEET 105-B-10

BUMMER LAKE AREA, Y.T.
 GRID 17
 SOIL SAMPLE RESULTS - PPM LEAD
 SCALE 1" = 400'
 NOVEMBER, 1974
 DWG # Y-34

ASSAY RESULTS			
	Ag.	Pb.	Zn.
37265	2.41	.62	32.4
37266	108.1	68.9	6.72
37267	3.09	.27	26.5
37268	146.28	3.6	10.68
37269	.12	Tr.	.03
37270	136.16	38.4	.86
37271	.88	.20	7.56

