



REPORT

on

SOMETHING FR. MINERAL CLAIM

KENO HILL AREA

YUKON TERRITORY

for

RIO PLATA SILVER MINES LTD.

420 - 475 Howe St.,

Vancouver, B.C.



This report has been examined by the Geological Evaluation Unit and is recommended to the Commissioner to be considered as representation work in the amount of

\$250.00

*D.B. Craig*

Resident Geologist or  
~~Resident Mining Engineer~~

Considered as representation work under  
Section 53 (4) Yukon Quartz Mining Act.

*[Signature]*  
Commissioner of Yukon Territory



Vernon, B.C.

April 4, 1975

By: K. L. Daughtry, P.Eng.

## TABLE OF CONTENTS

	<u>Page</u>
INTRODUCTION	1
PROPERTY	2
LOCATION, ACCESS	2
GEOLOGY	3
GRID ESTABLISHMENT	3
GEOCHEMISTRY	4
GEOPHYSICS	5
CONCLUSIONS	6
VALUATION OF WORK	6
STATEMENT OF QUALIFICATIONS	7

## LIST OF ILLUSTRATIONS

Figure 1	Location Map	Following Page 2
Figure 2	Something Fr. and Formo Group	In Pocket
Figure 3	Geochemistry: Soil Survey	In Pocket
Figure 4	Geophysics: Magnetometer Survey	In Pocket

## INTRODUCTION

In the autumn of 1973, Rio Plata Silver Mines Ltd. conducted a comprehensive surface exploration programme of their FORMO group of claims in the Keno Hill area of the Yukon Territory. The emphasis of the programme was the exploration of the property for evidence of the presence of vein faults carrying silver-lead-zinc mineralization of the "Keno Hill" type.

A picket-line grid was laid out over the entire claim group. This grid was based on the existing surveyed claim boundaries, with line spacings generally at 500- and 250-foot intervals. The entire property was explored by ground magnetometer and geochemical soil surveys. The Something Fr. located mineral claim was explored as part of this programme and the results of this work are presented in this report.

Linecutting and soil sampling were conducted by M. Hjelt, W. Makortoff and C. Marlow, under the supervision of the writer, in late September and early October, 1973. The ground magnetometer survey was conducted by M. Hjelt under the supervision of the writer in October, 1973 and the compilation and interpretation of data was completed by W.R. Gilmour, B.Sc. and the writer in March, 1975.

PROPERTY

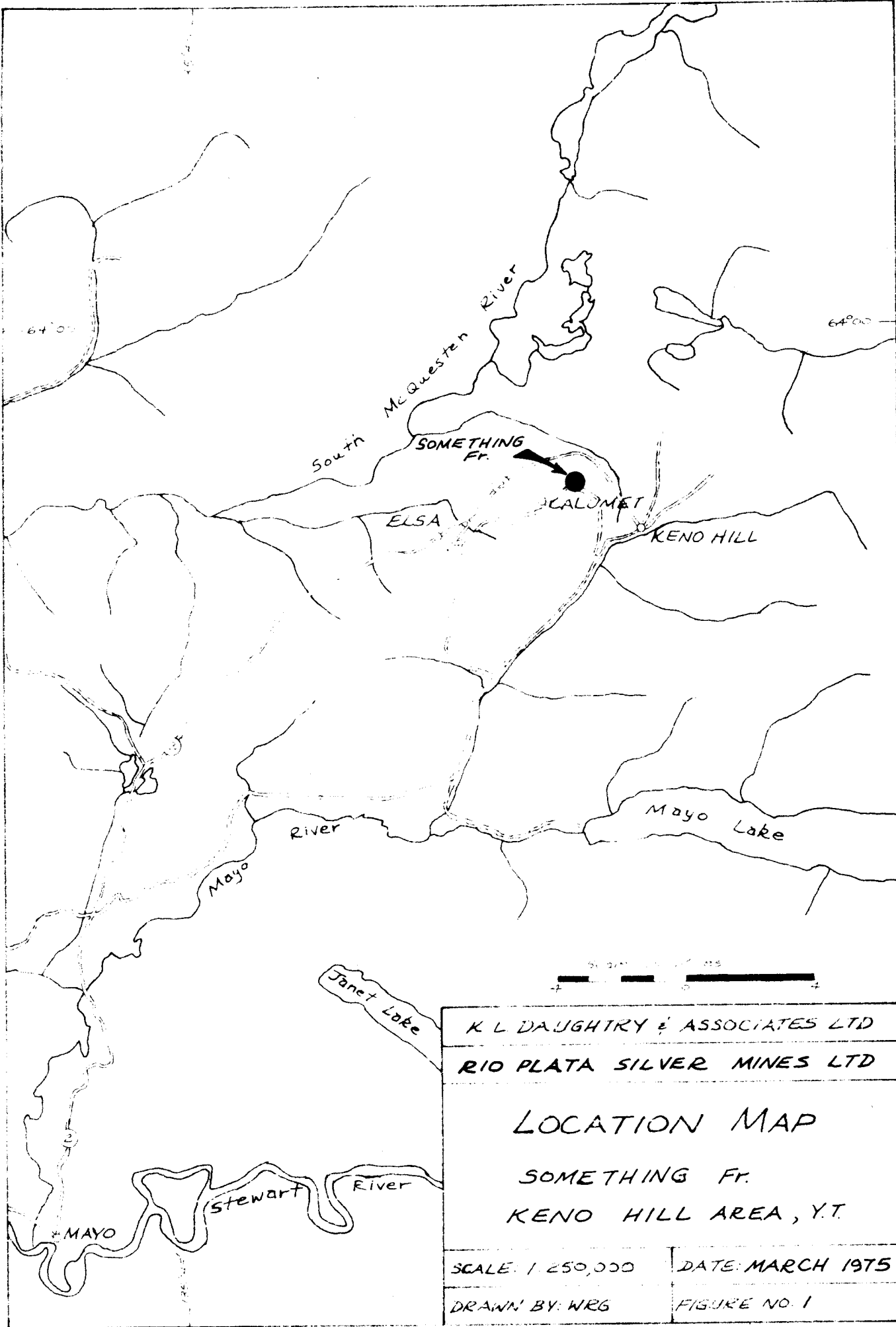
The Something Fr. located mineral claim, Record Number Y84831, is held by A.D. Ross, 1101 - 1775 Bellevue Ave., West Vancouver, B.C. in trust for Rio Plata Silver Mines Ltd., 420 - 475 Howe St., Vancouver, B.C. The claim is a relocation of the former surveyed mineral claim the Something Fr. (Lot 659), having an area of 13.02 acres, and was staked by A.D. Ross on August 7, 1973.

The Dorothy M.C. (Lot 650) and the Tagish M.C. (Lot 651) adjoin the Something Fr. on the north and south respectively. The claim is bounded on the west and east by the Carol Fr. located claim and the Skookum M.C. (Lot 652) respectively. With the exception of the Carol Fr. all of the above claims are owned by Rio Plata Silver Mines (Figure 2).

LOCATION, ACCESS

The Something Fr. is at the 3500-foot elevation on the north slope of Galena Hill in the Keno Hill area of the Yukon Territory (Figure 1). The claim is 3.7 miles northeast of the town of Elsa and 2.8 miles northwest of Keno City.

Access to the claim is gained by walking about 1500 feet down from a point on the old Calumet-Keno Hill highway opposite the UN Adit of United Keno Hill Mines.



K L DAUGHTRY & ASSOCIATES LTD	
RIO PLATA SILVER MINES LTD	
<p>LOCATION MAP</p> <p>SOMETHING FR.</p> <p>KENO HILL AREA, Y.T.</p>	
SCALE: 1:250,000	DATE: MARCH 1975
DRAWN BY: WRG	FIGURE NO. 1

## GEOLOGY

The Something Fr. is underlain by phyllite and quartzite of the Jurassic(?) Lower Schist formation intruded by discontinuous bodies of altered dioritic rock (greenstone). All rocks generally strike easterly and dip south at between 20° and 40°.

The property is believed to be crossed by an extension of the Formo vein fault, a mineralized structure exposed in surface and underground workings about 3500 feet to the north-northeast. Rio Plata Silver Mines are exploring the Something Fr. for silver-lead-zinc mineralization similar to that in the FORMO vein.

## GRID ESTABLISHMENT

Rio Plata Silver Mines established a picket-line grid, based upon surveyed claim boundaries, totalling about one line mile. All boundaries of the Something Fr. were cut out, chained and picketed at 100-foot intervals (Figure 4). In addition, a central tie line (7+50E) crosses the centre of the claim in a northerly direction. This grid is part of the overall grid established on the FORMO group (Figure 2).

## GEOCHEMISTRY

Soil samples were collected along the east-west grid lines at 50-foot intervals. Samples were collected with a grubhoe and placed in numbered kraft wet-strength paper bags. Samples were analyzed for lead, zinc and silver by Bondar-Clegg and Co. Ltd of North Vancouver, using hot aqua regia digestion and atomic absorption techniques. Metal contents were reported in parts per million.

The soil in the Something Fr. claim is generally organic-rich and water-saturated. Permafrost is present within a few inches of surface where the moss has not been disturbed. A sandy to silty layer of residual soil occurs beneath a variable thickness of black organic materials.

All samples collected were from this horizon, which varied in depth from 4 to 12 inches. Figure 3 presents the analytical results for all samples collected. Lead values ranged from 12 to 110 ppm., with mean and median values of 27 and 20 ppm. respectively. A southwesterly-trending zone of higher lead values is apparent in the eastern part of the Something Fr. This zone is about 400 feet wide and is possibly related to mineralization in a vein fault in that area.

Silver values range from 0.5 to 1.6 ppm. with one sample at 6.0 ppm. Higher values (1.4 to 1.6 ppm.) generally coincide with the zone of high lead values.

Zinc values range from 24 to 196 ppm. with a median value of about 100 ppm. The higher values are apparently randomly distributed.

The best single sample is at 9+00E on Line 33S, which has the highest values on the claim in all three metals. More detailed soil sampling is required in the zone of higher values to better delineate the anomalous zone.

#### GEOPHYSICS

A McPhar M-700 vertical field fluxgate magnetometer was used to take readings at 100-foot intervals along the north-south lines. Diurnal variation was checked regularly but was negligible at the time of the survey. The purpose of the survey was to determine if the greenstone bodies could be delineated by virtue of their magnetic contrast to the surrounding phyllites and quartzites.

Values varied from 490 to 550 gammas over the property, and it was concluded that sufficient contrast did not exist in the magnetic background over various rock types to permit any geological interpretation (Figure 4).

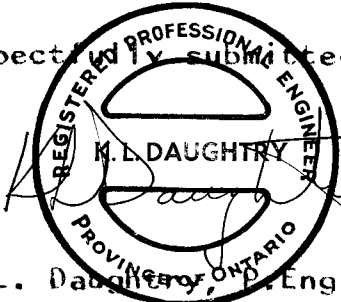
CONCLUSIONS

1. The geochemical soil survey over the Something Fr. indicates a southwesterly-trending zone of high lead and silver values on the eastern part of the claim. This zone may be related to a mineralized vein fault.
2. More detailed soil sampling is required to indicate the locations of the source of the soil anomaly.
3. The ground magnetometer survey failed to discriminate between greenstone and metasediments.

VALUATION OF WORK

Linecutting and Grid Establishment	
1 mile @ \$150. per mile	\$150.00
Geochemical Soil Survey	
62 samples @ \$4.00 per sample	250.00
Magnetometer Survey	50.00
Compilation and Interpretation of data	<u>100.00</u>
	<u>\$550.00</u>

Vernon, B.C.  
April 4, 1975

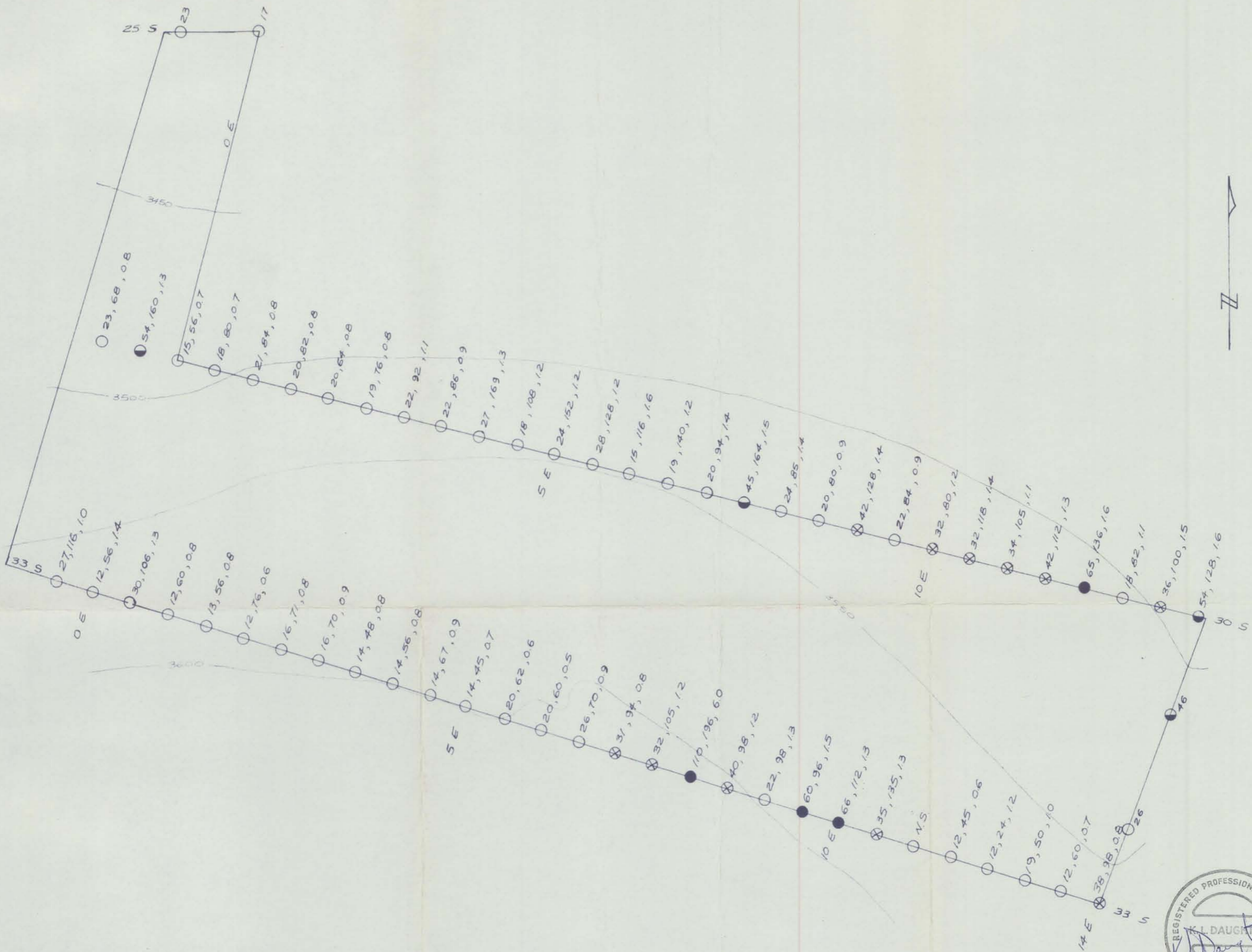
Respectfully submitted,  
  
K. L. Daughtry, P.Eng.

STATEMENT OF QUALIFICATIONS

I, Kenneth L. Daughtry of R. R. # 4, Vernon, B.C.  
do hereby certify that:

1. I am a Consulting Geologist in mineral exploration.
2. I have practiced my profession for ten years in Canada, the United States, and Ireland.
3. I am a graduate in Geology and Chemistry from Carleton University, Ottawa.
4. I am a member in good standing of the Associations of Professional Engineers of British Columbia and Ontario, and am a Fellow of the Geological Association of Canada.
5. This report is based upon the results of exploration work carried out under my direct supervision.
6. I have no interest direct, or indirect, nor do I expect to receive any, in the property or shares of Rio Plata Silver Mines Ltd.





LEGEND

- sample location
- 27, 60, 0.9 ppm Pb, ppm Zn, ppm Ag
- ⊗ 31 ppm - 44 ppm Pb
- 45 ppm - 59 ppm Pb
- ≥ 60 ppm Pb
- 3500 — elevation contour in feet (50' intervals)

Scale in Feet  
0 50 100 200

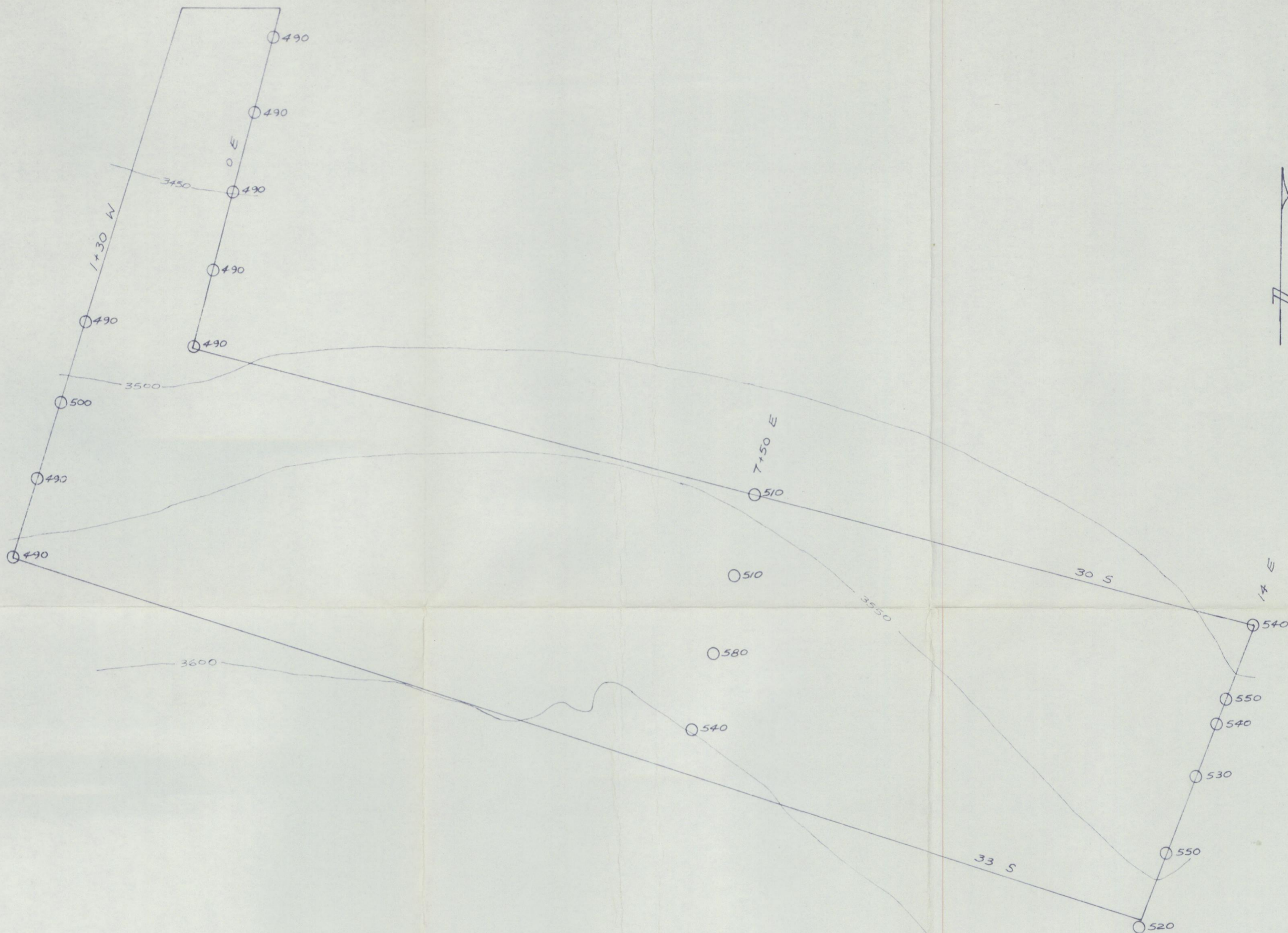
K.L. DAUGHTRY & ASSOCIATES LTD  
RIO PLATA SILVER MINES LTD

GEOCHEMISTRY: SOIL SURVEY  
SOMETHING FR.

KENO HILL, Y.T.

SCALE: 1" = 100'	DATE: MARCH 1975
DRAWN BY: WRG	FIGURE NO: 3





**LEGEND**

- reading location
- 510 magnetometer reading in gammas
- 3500 — elevation contour in feet (50' intervals)



Scale in Feet  
 0 50 100 200

K. L. DAUGHTRY & ASSOCIATES LTD  
 RIO PLATA SILVER MINES LTD

GROUND MAGNETOMETER SURVEY  
 SOMETHING Fr.

KENO HILL, Y.T.

McPhar M700 Vertical Field Flux Gate Magnetometer

SCALE: 1"=100'	DATE: MARCH 1975
DRAWN BY: WRG	FIGURE NO: 4