

WHITEHORSE COPPER MINES LTD.

REPORT ON EXPLORATORY WORK DONE UNDER
"NORTHERN MINERAL EXPLORATION ASSISTANCE PROGRAM"

MARCH 1974 - JULY 1974

FILE N-1790-5-309

A. HUREAU
GEOLOGIST

*Received
April 7/75*

TABLE OF CONTENTS

| | Page |
|------------------------------|-----------|
| INTRODUCTION AND SUMMARY | 1 |
| WAR EAGLE 19-39 CLAIMS | |
| GENERAL | 1 |
| DRILLING RESULTS | 1 |
| KEEWENAW TO COWLEY PARK | |
| LOCATION & ACCESS | 2 |
| GEOLOGY | 2 |
| MAGNETOMETER SURVEYS | 2 |
| DRILLING RESULTS | 2 |
| INDUCED POLARIZATION SURVEYS | 3 |
| SUMMARY OF EXPENDITURES | 4 |
| Fig. 1 - 21 | In report |
| Annexs A - Q | In report |

WHITEHORSE COPPER MINES LTD.

INTRODUCTION AND SUMMARY

This report describes exploratory work done on the property of Whitehorse Copper Mines Ltd. from March '74 to July '74 under the "NORTHERN MINERAL ASSISTANCE PROGRAM". (file # N-1790-5-309).

Ten holes aggregating 4956 ft. were drilled. Two line miles of detailed induced polarization and six line miles of ground magnetometer surveys were completed. Three miles of line were cut.

Only weak copper mineralization was found in three of the holes and no follow-up work is planned at this time.

Total cost of the project was \$67,468.79.

Fig. 1 Location sketch showing the general geology of the Whitehorse Copper Belt.

Fig. 2 Table of formations.

WAR EAGLE 19-39 CLAIMS

GENERAL

WE 19-39 claims are at the northern extremity of the Whitehorse Copper Belt west of Mile 921 of the Alaska Highway.

The southern boundary of the claims is 1.5 miles north of War Eagle Pit which produced 9,000,000 Tons @ 1.26% copper. Rock exposure in the area is poor. Diorite of the Coast Range Intrusive Complex is known to be in contact with rocks of the Lewes River Group in the west and south west part of the area.

DRILLING RESULTS

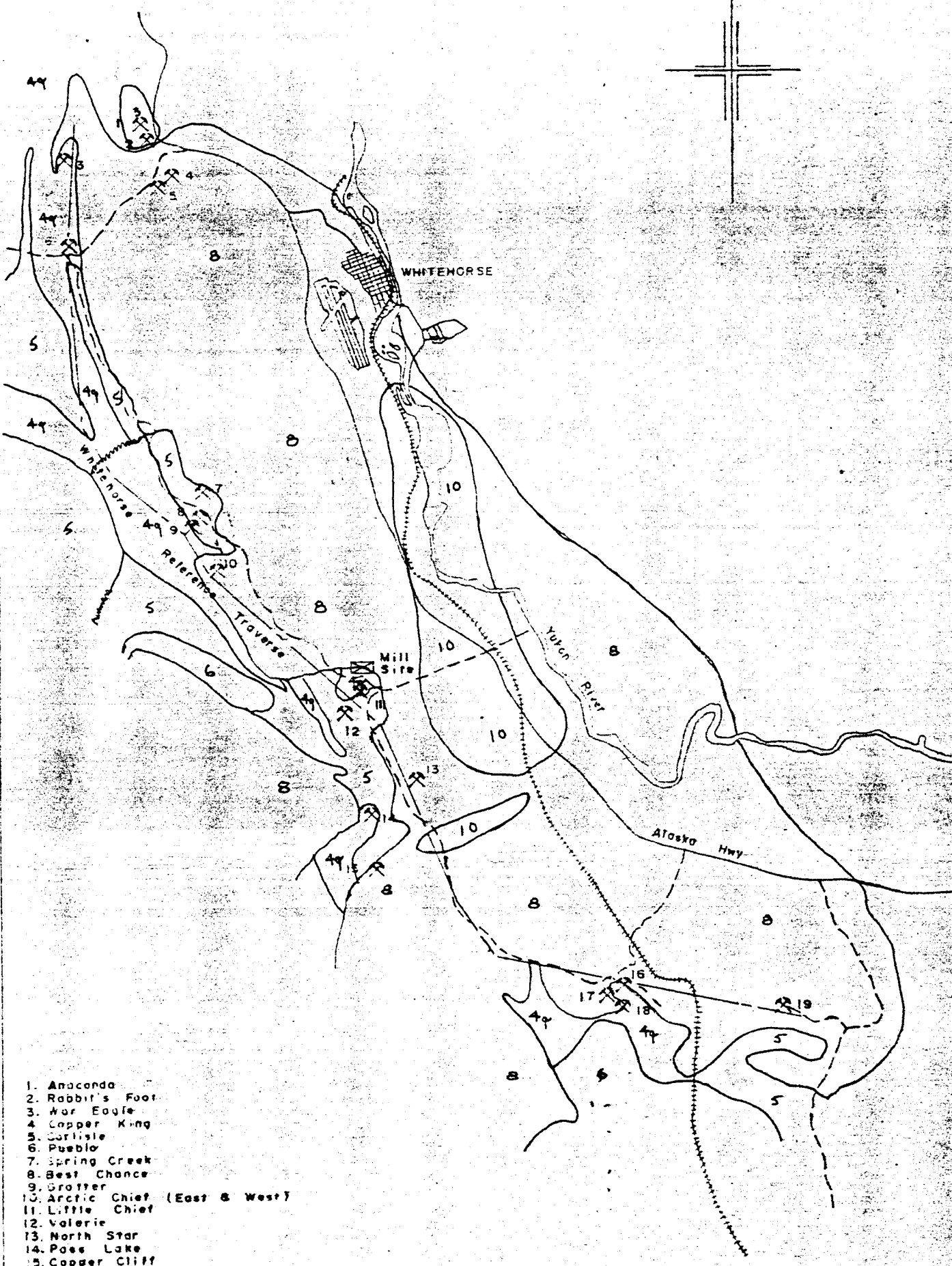
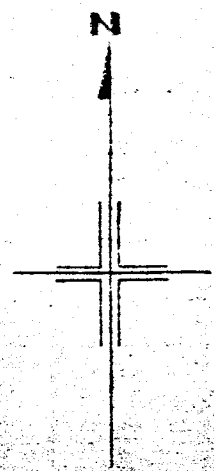
Two I.P. anomalies were selected as drill targets because of their proximity to the intrusive-sediments contact and the presence of copper bearing float in the area.

Two holes aggregating 837 ft. were drilled to test the anomalies which were found to be caused by pyrite in quartzite and argillite.

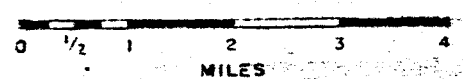
Fig. 4 Section DDH HS 3

Fig. 5 Section HS 4

Logs of HS 3 & 4 are included as annexes A & B.



1. Anaconda
2. Rabbit's Foot
3. War Eagle
4. Copper King
5. Carlisle
6. Pueblo
7. Spring Creek
8. Best Chance
9. Groffer
10. Arctic Chief (East & West)
11. Little Chief
12. Valerie
13. North Star
14. Pass Lake
15. Copper Cliff
16. Gem
17. Keewenaw
18. Bear Cub (Black Cub South)
(Grizz. Cub)
(Kodiac Cub)
(Brown Cub)
19. Cowley Park



WHITEHORSE COPPER BELT - GEOLOGY

GEOLOGICAL LEGEND

FIG. 2

CENOZOIC

QUATERNARY

PLEISTOCENE & RECENT

- Q ALLUVIUM, GLACIAL DRIFT
- 10 MILES CANYON BASALT

POST CRETACEOUS

INTRUSIVE DYKES OR SILLS

- 9a ACIDIC GRANITIC, APLITE, FELSITE, 9a - MAY PREDATE SKARN
- 9b BASIC ANDESITE, DIORITE, POST-ORE, 9br - PORPHYRY

MESOZOIC

CRETACEOUS

COAST INTRUSIVES

- 8 DIORITE 8a - ALTERED (ENDOSKARN)
8b - MINERALIZED ENDOSKARN, MALACHITE, CHALCOPYRITE, BORNITE
- 7 7g - GRANITE, 7b - GRANODIORITE, 7m - QUARTZ MONZONITE

LOWER JURASSIC & LATER

- 6 LABERGE GROUP

UPPER TRIASSIC

LEWES RIVER GROUP (METAMORPHOSED)

- 5 LIMESTONE AND/OR DOLOMITE, 5b - CARBONACEOUS LIMESTONE
- 4 SEDIMENTS - NON CALCAREOUS 4q - QUARTZITE, 4g - GREYWACKE,
4k - ARKOSE

- | | | | |
|---|-----------------------------------|--|--|
| 3 | SKARN - BARREN, WITH | a - ACTINOLITE | t - TREMOLITE |
| | | c - CHLORITE | w - WOLLASTONITE |
| | | d - DIOPSIDE | z - ZOISITE |
| 2 | MINERALISED SILICATE SKARN | e - EPIDOTE | M - MAGNETITE |
| | | f - FELDSPAR | H - HEMATITE |
| 1 | MINERALISED MAGNETITE SKARN | g - GARNET | C - CHALCOPYRITE |
| | | s - SERPENTINE | B - BORNITE |
| | | | V - VALERIITE |

KEEWENAW TO COWLEY PARK

LOCATION & ACCESS

The belt between Keewenaw and Cowley Park extends for a distance of 2.5 miles and is located seven miles south east of McGrae (Mile 910 Alaska Highway). The area is accessible by road from McGrae and from Mile 2.5 of the Carcross road.

GEOLOGY

Several copper bearing skarn zones exist along this belt (fig. 7), all of which are developed along the contact of Cretaceous diorite and granodiorite of the Coast Range Intrusive Complex with sedimentary rocks of the Lewes River Group. Exploration has been hampered by lack of exposure, deep overburden and the presence of graphitic horizons in the limestone which could mask I.P. anomalies caused by sulphides.

Several areas of high I.P. response were chosen as drill targets to test the contact at depth.

MAGNETOMETER SURVEYS

Ground magnetic surveys were done over the selected areas to try to establish the sediments-intrusive contacts.

Fig. 8 Claim map showing hole locations.

Fig. 9 Magnetic survey over Tavern Lake Area (BLC 46)

Fig.10 Magnetic survey area BLC 47 & 48

Fig.11 Magnetic Survey Area CP 71

Fig.12 Magnetic Survey CP 72-73

Fig.13 Magnetic Survey Grid west CP 72-73

Fig.14 Sketch showing new lines established for magnetic surveys.

DRILLING RESULTS

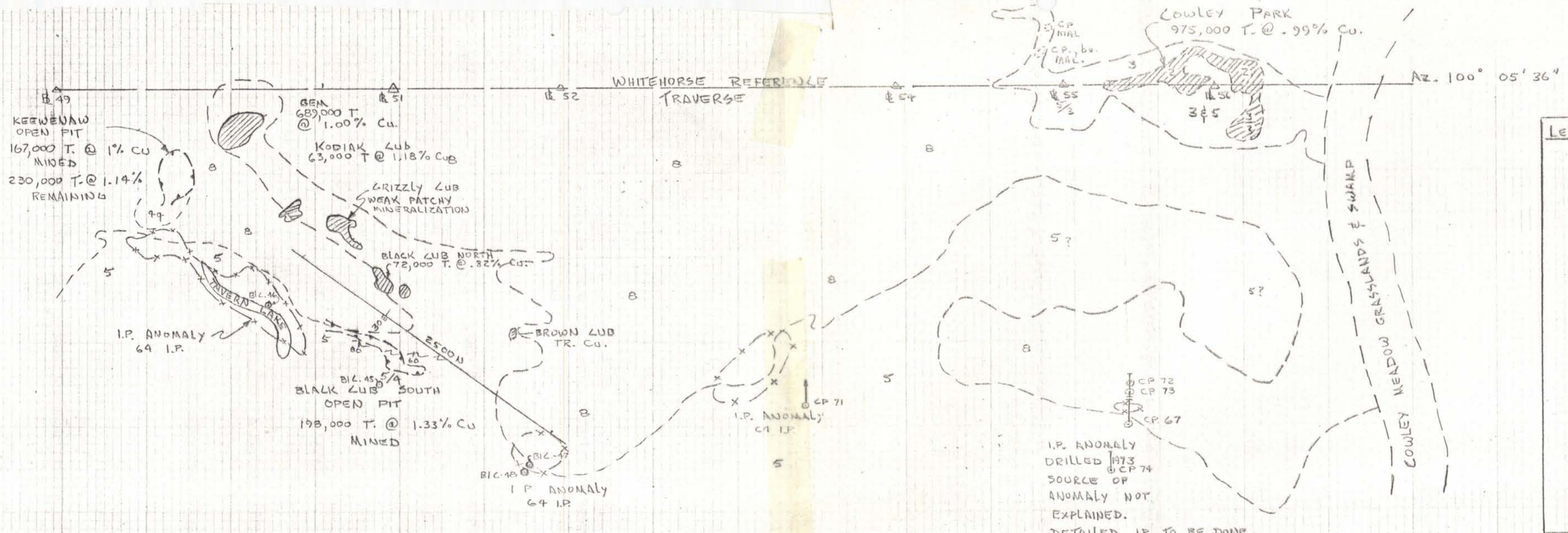
Eight holes aggregating 4119 ft. were drilled, (BLC 45 was deepened from 128'). BLC 47, 48 and CP 74 could not be completed because of poor ground conditions. All other holes intersected skarn but only weak copper mineralization was present.

Fig. 15 Section of BLC 45

Fig. 16 Section of BLC 46

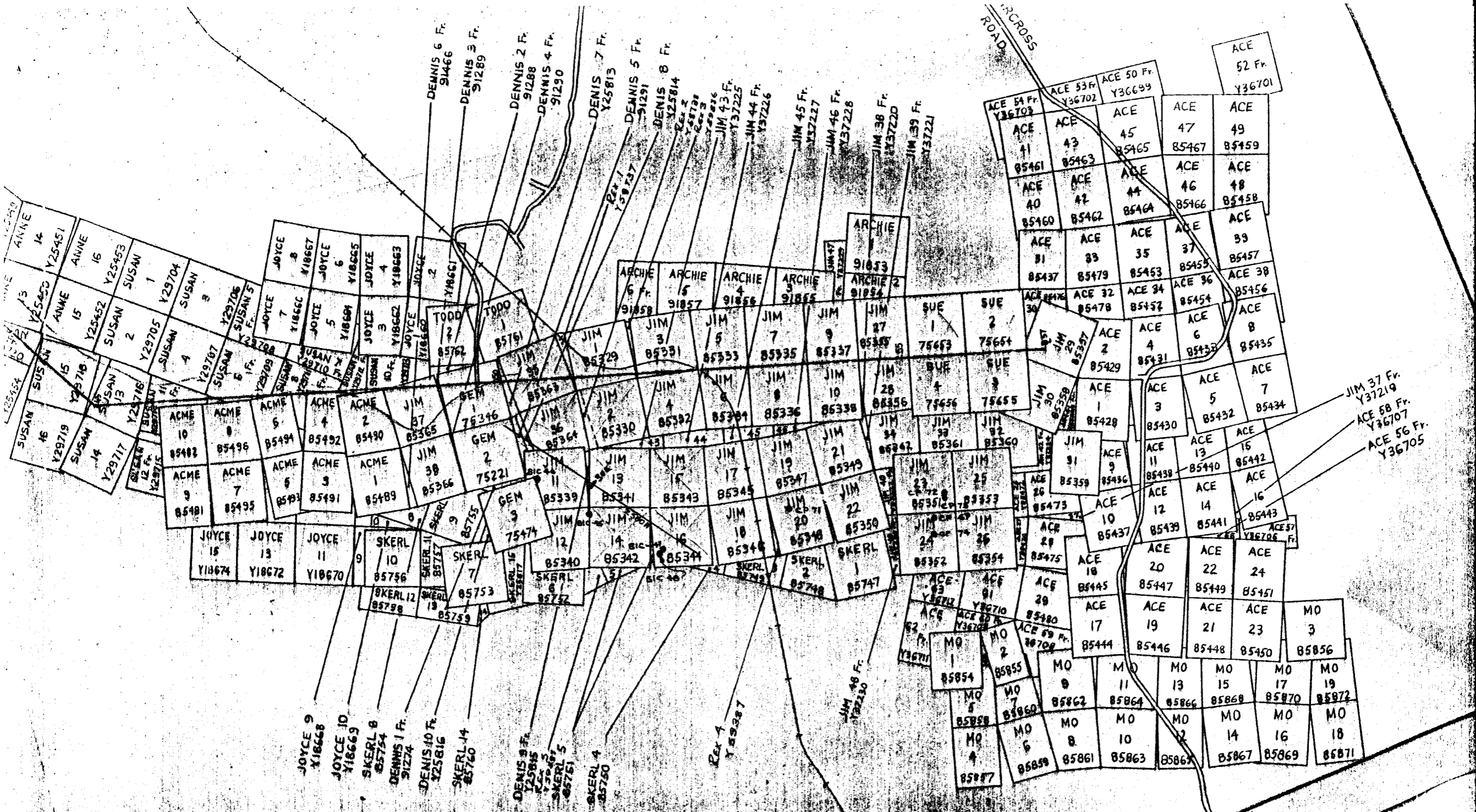
Fig. 17 Section of BLC 47 & 48

Fig. 18 Section of CP 71

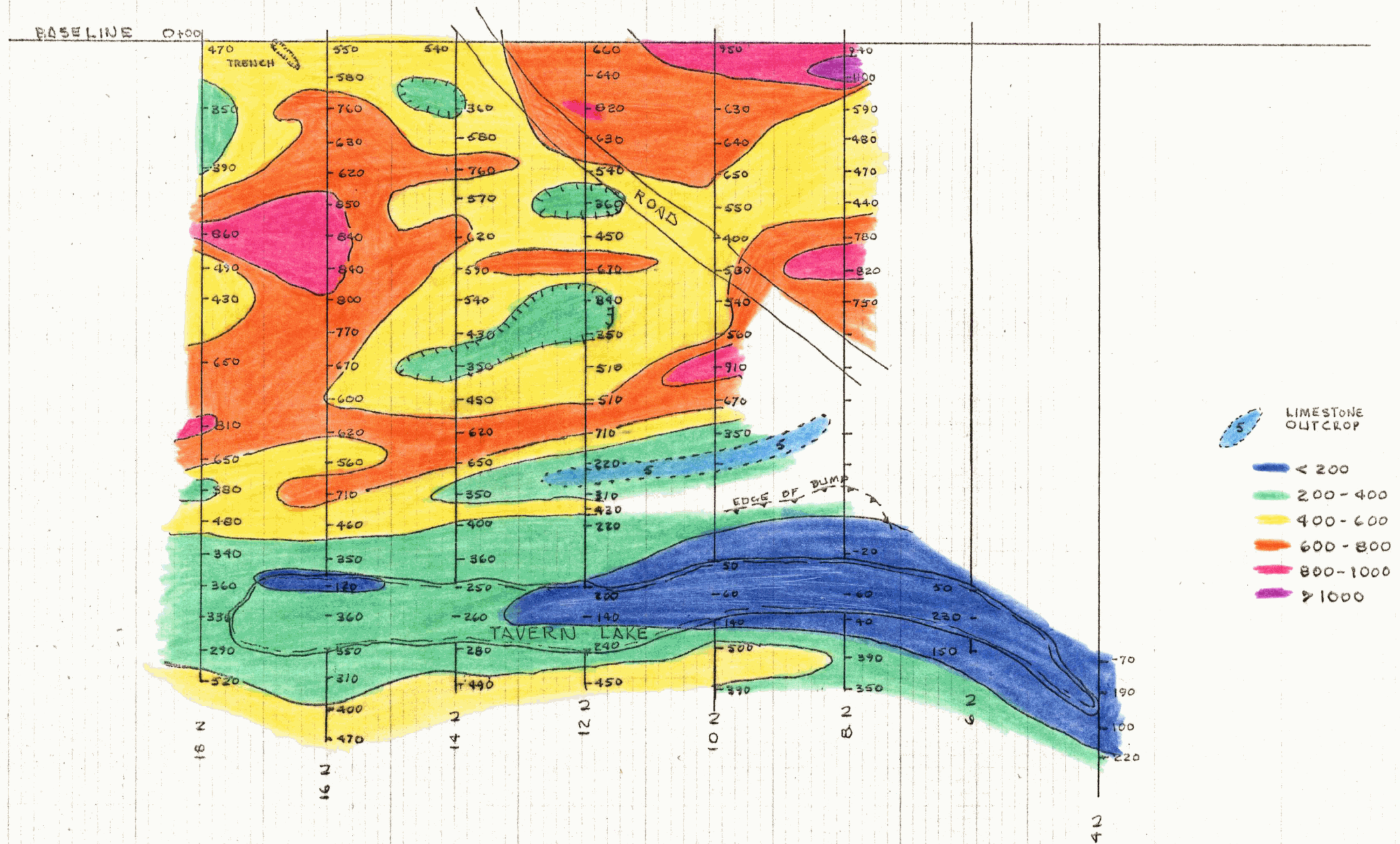


| LEGEND | |
|-----------------------|-----------------------|
| <u>CRETACEOUS</u> | |
| 8 | DIORITE, GRANODIORITE |
| <u>UPPER TRIASSIC</u> | |
| 5 | LIMESTONE |
| 4 | QUARTZITE, GREYWACKE |
| 3 | SKARN, UNMINERALIZED |
| 2 | SKARN, COPPER BEARING |
| (Dashed line) | INTERPRETED CONTACT |
| (Hatched area) | MINERALIZED ZONE |
| (Dashed outline) | OUTLINE OF OPEN PIT |
| (X marks) | I.P. ANOMALY |

WHITEHORSE COPPER MINES LTD.
 EXPLORATION COMPOSITE
 KEEWENAW - COWLEY PARK
 FIG. 7
 1" = 1000' AUG. 74 L.D.



WHITEHORSE COPPER MINES LTD.
 CLAIMS - KEEWENAW - COOLEY PARK
 1" = 1/2 MILE FIG. 8



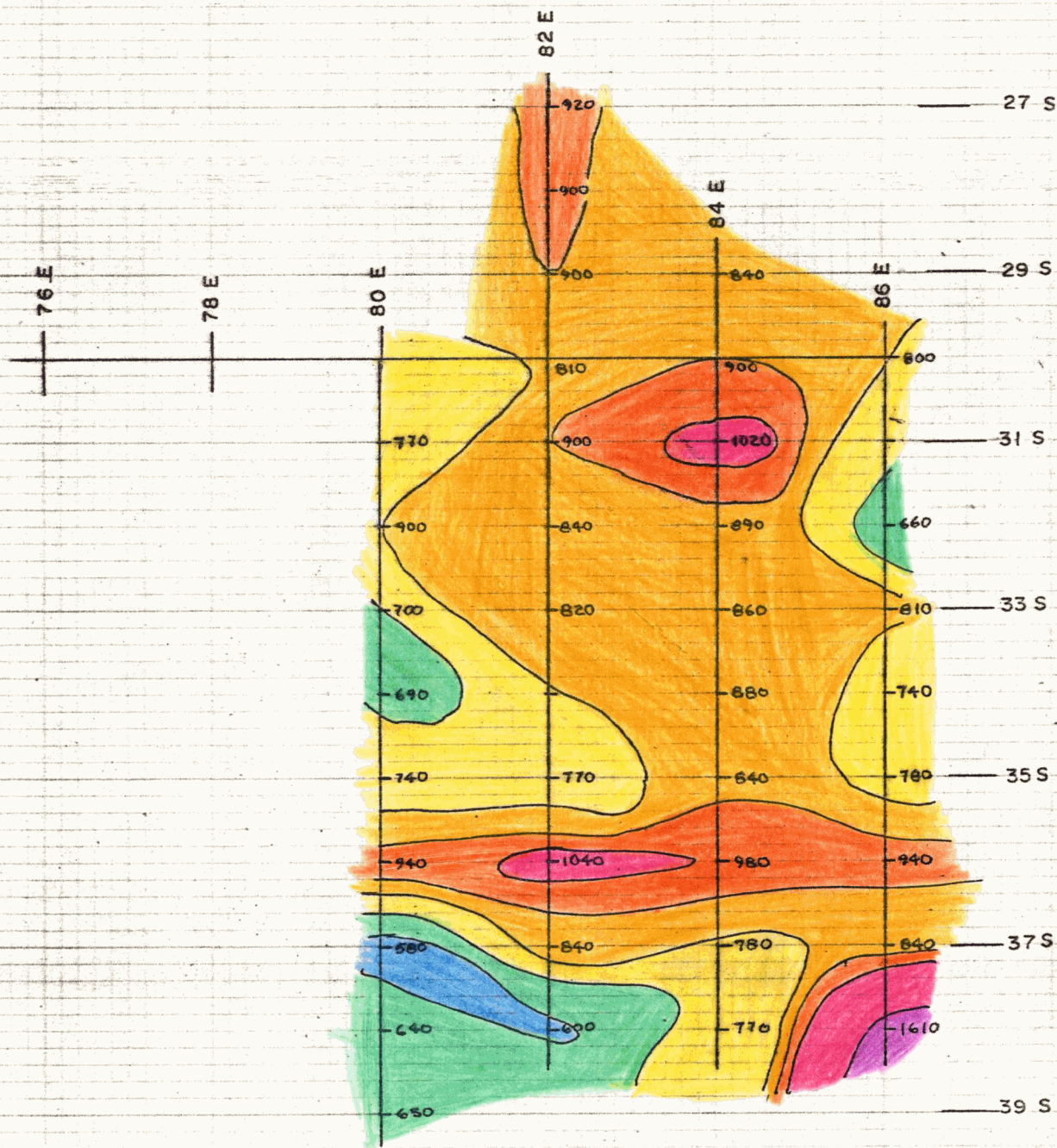
WHITEHORSE COPPER MINES
 MAG. SURVEY - APRIL 1974
 TAVERN LAKE AREA
 1" = 200'
 FIG. 9



- < 400
- 400 - 500
- 500 - 600
- 600 - 700
- 700 - 800
- > 800

WHITEHORSE COPPER MINES LTD
 MAG. SURVEY NEAR
 BLACK CUB 47 & 48

1" = 200' FIG. 10

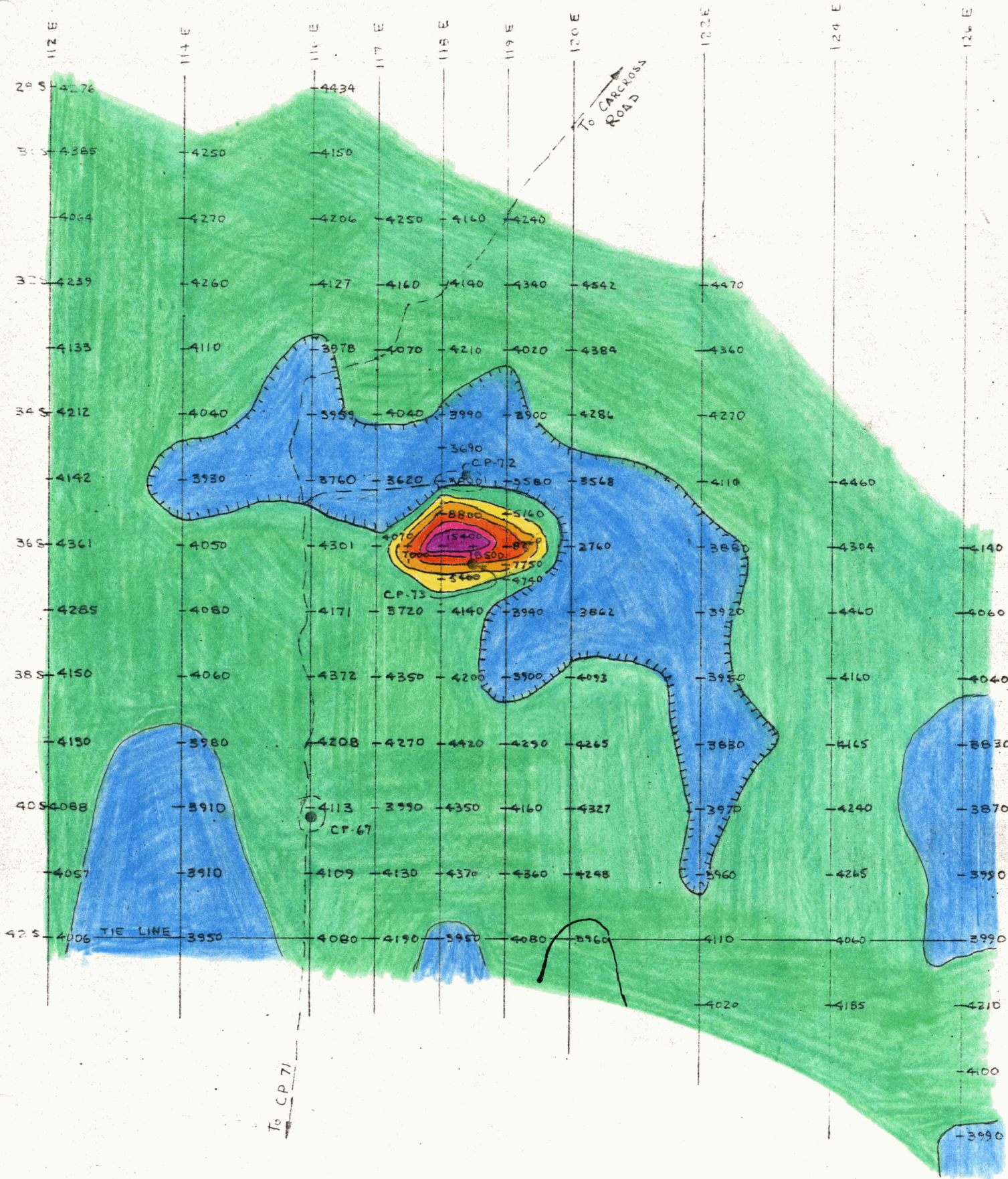


WHITEHORSE COPPER MINES LTD.

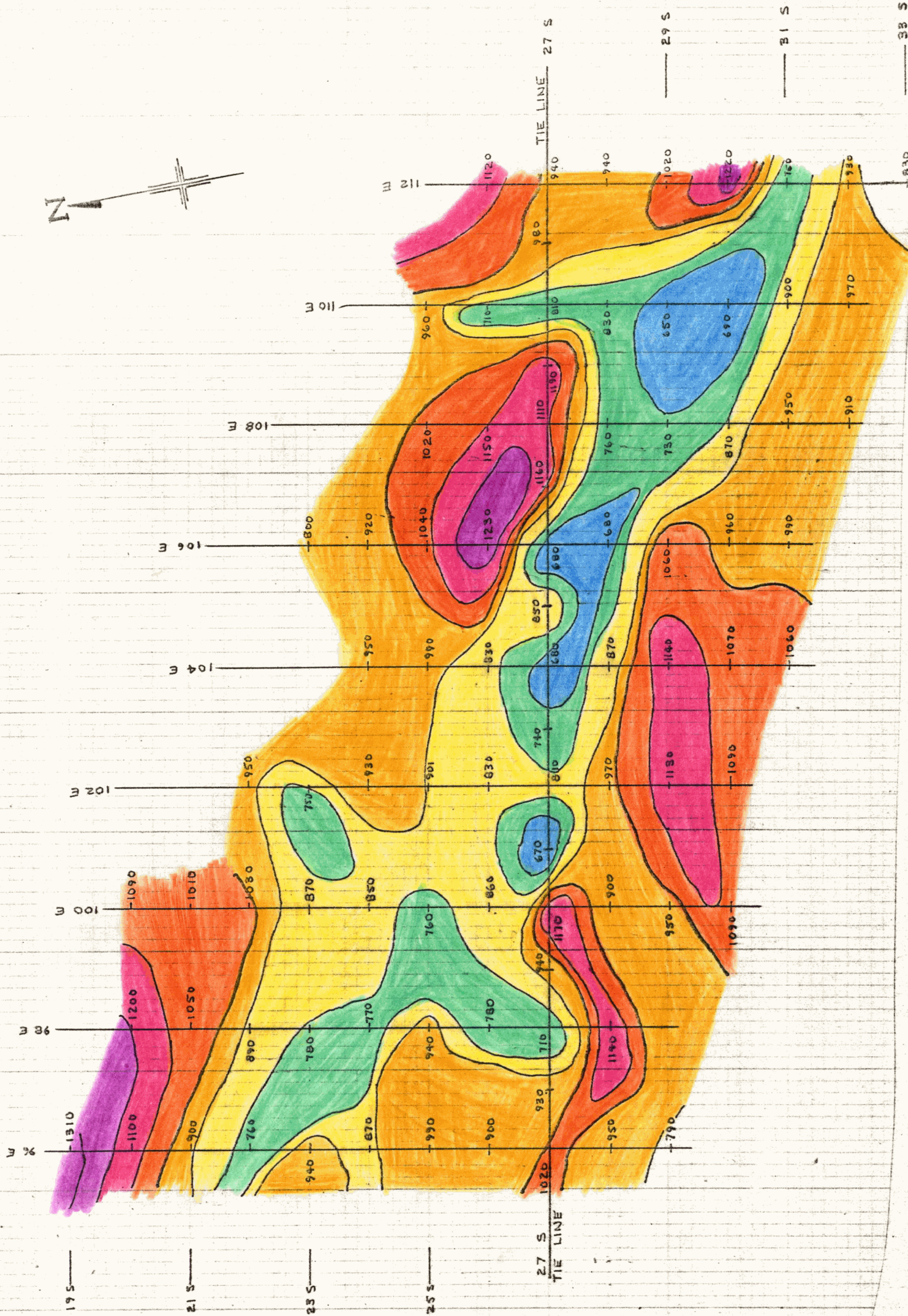
COWLEY PARK
MAG. SURVEY 1974

1" = 200' Contour Interval = 100'

FIG. II

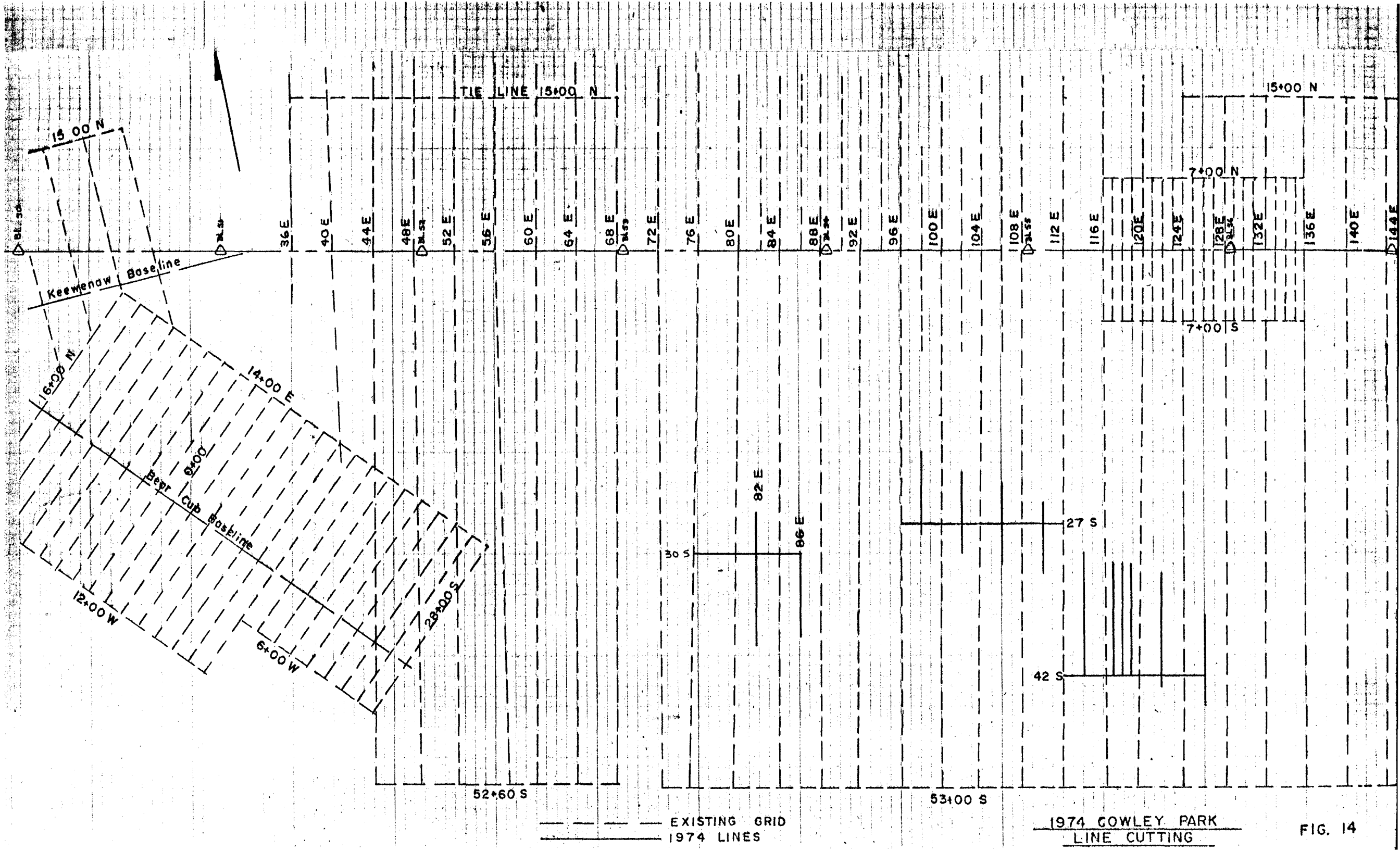


WHITEHORSE COPPER MINES. LT
 COWLEY PARK AREA
 MAG. SURVEY
 MAY 1974
 1" = 200' FIG. 12

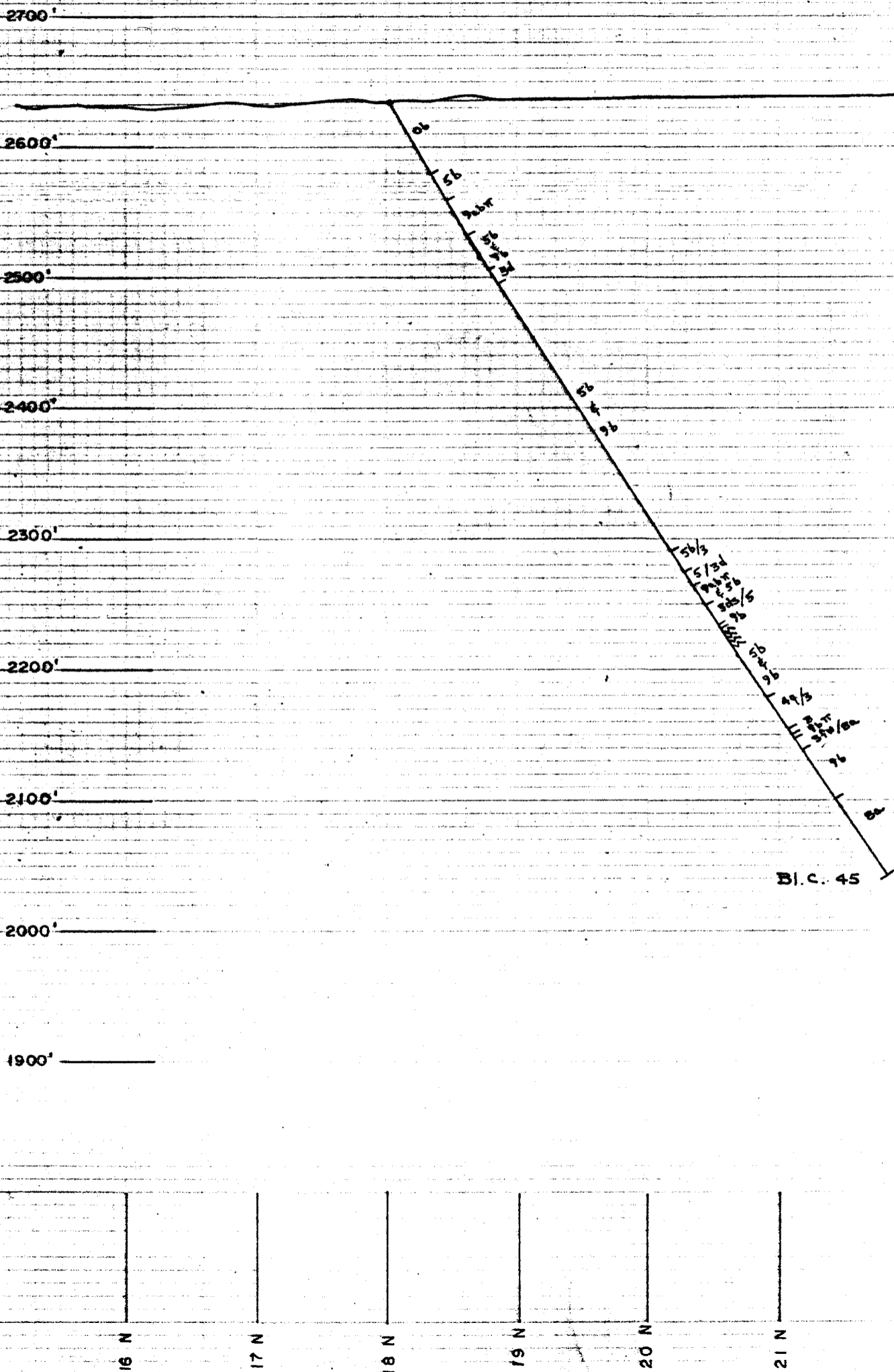


- █ < 700
- █ 700 - 800
- █ 800 - 900
- █ 900 - 1000
- █ 1000 - 1100
- █ 1100 - 1200
- █ > 1200

WHITEHORSE COPPER MINES LTD.
 COWLEY PARK
 MAG. SURVEY - 1974
 CONTOUR INTERVAL = 100 Y
 1" = 200' FIG. 13



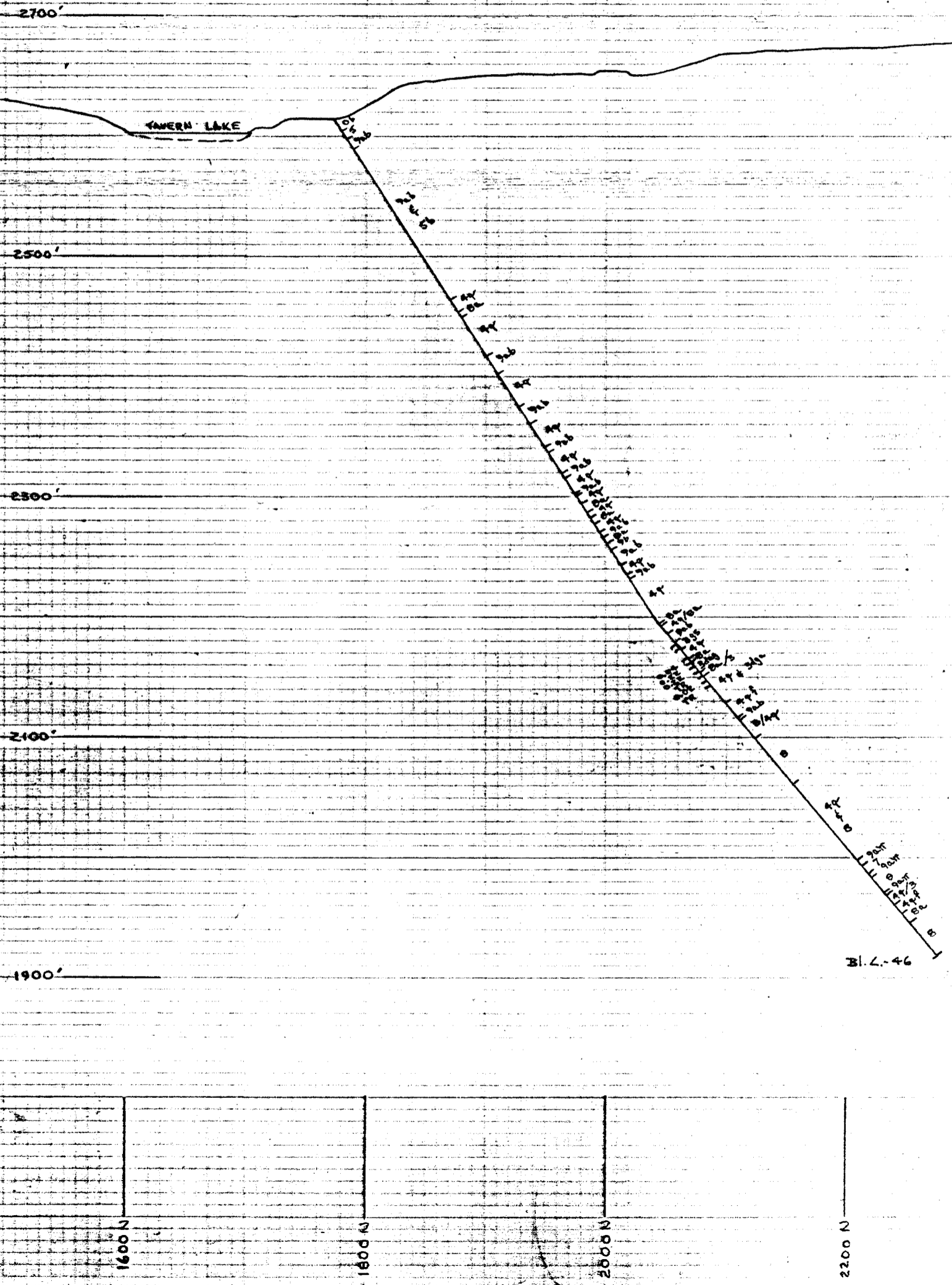
WHITEHORSE COPPER MINES LTD.
BEAR CUB SECTION 3400 E
1" = 100' FIG. 15



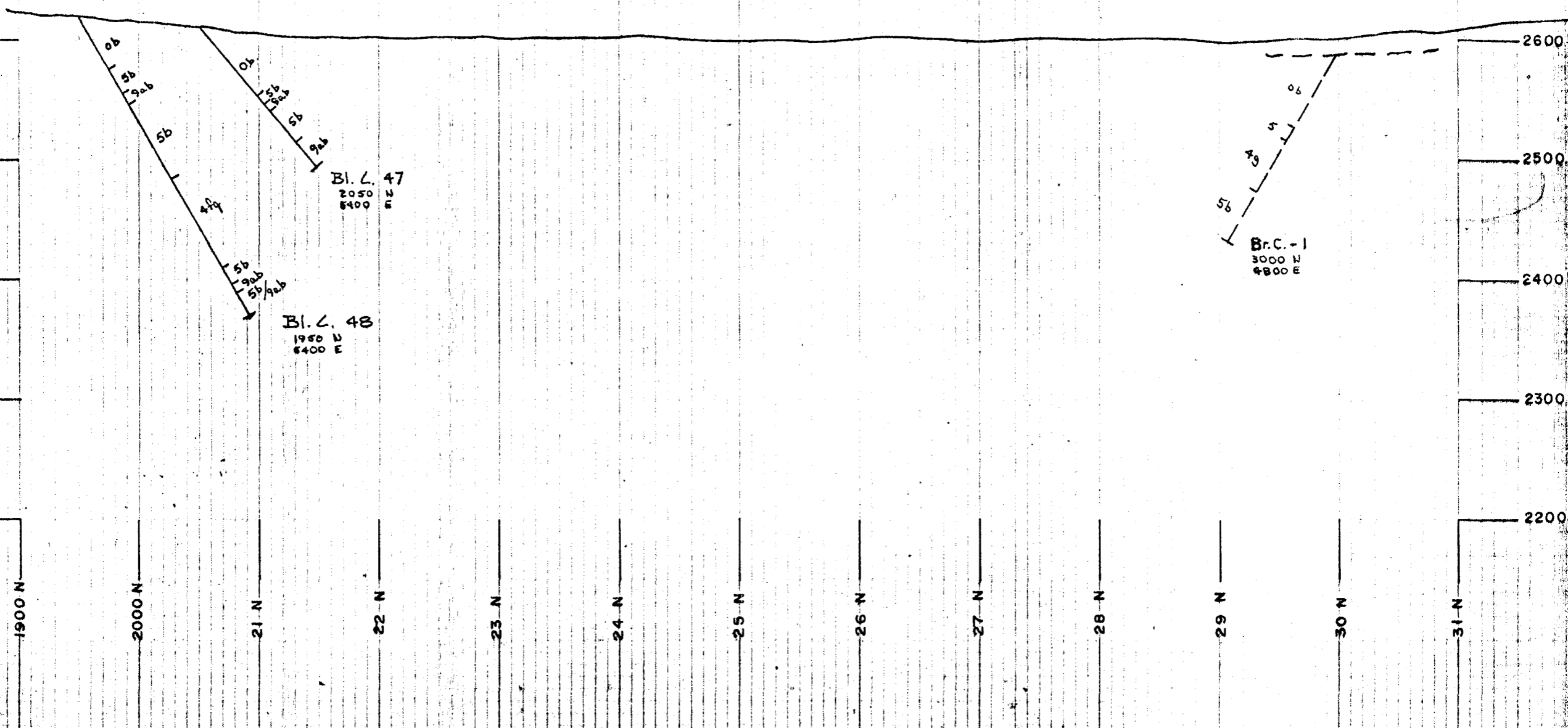
WHITEHORSE COPPER MINES LTD.

BEAR CUB SECTION 1800E

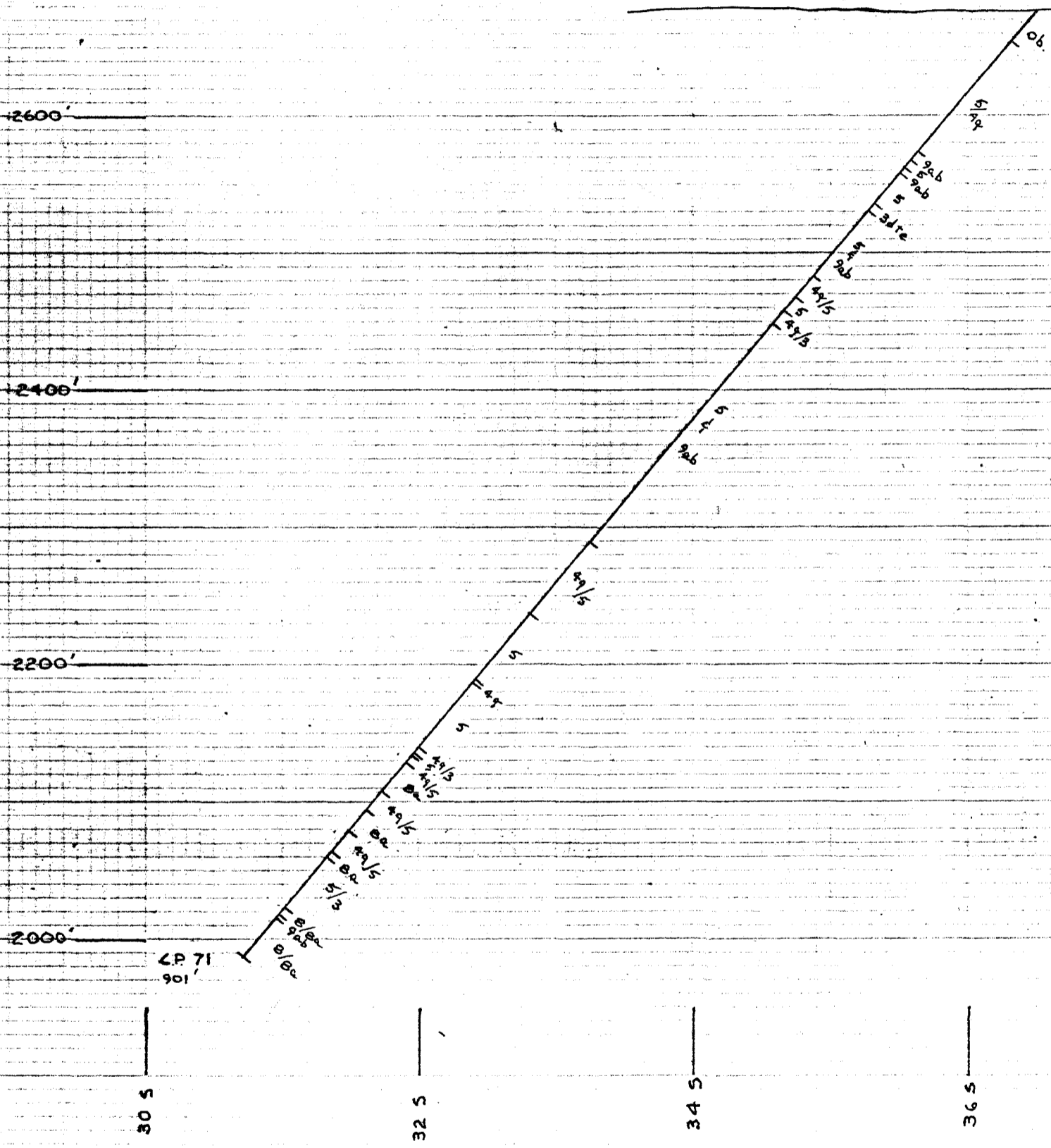
1"=100' FIG. 16



Bl. L. 46



WHITEHORSE COPPER MINE LTD.
 BEAR CUB SECTION 5400 E
 1" = 100' FIG. 17



WHITEHORSE COPPER MINES LTD.
 COWLEY PARK SECTION 80+00E
 1" = 100' FIG. 18

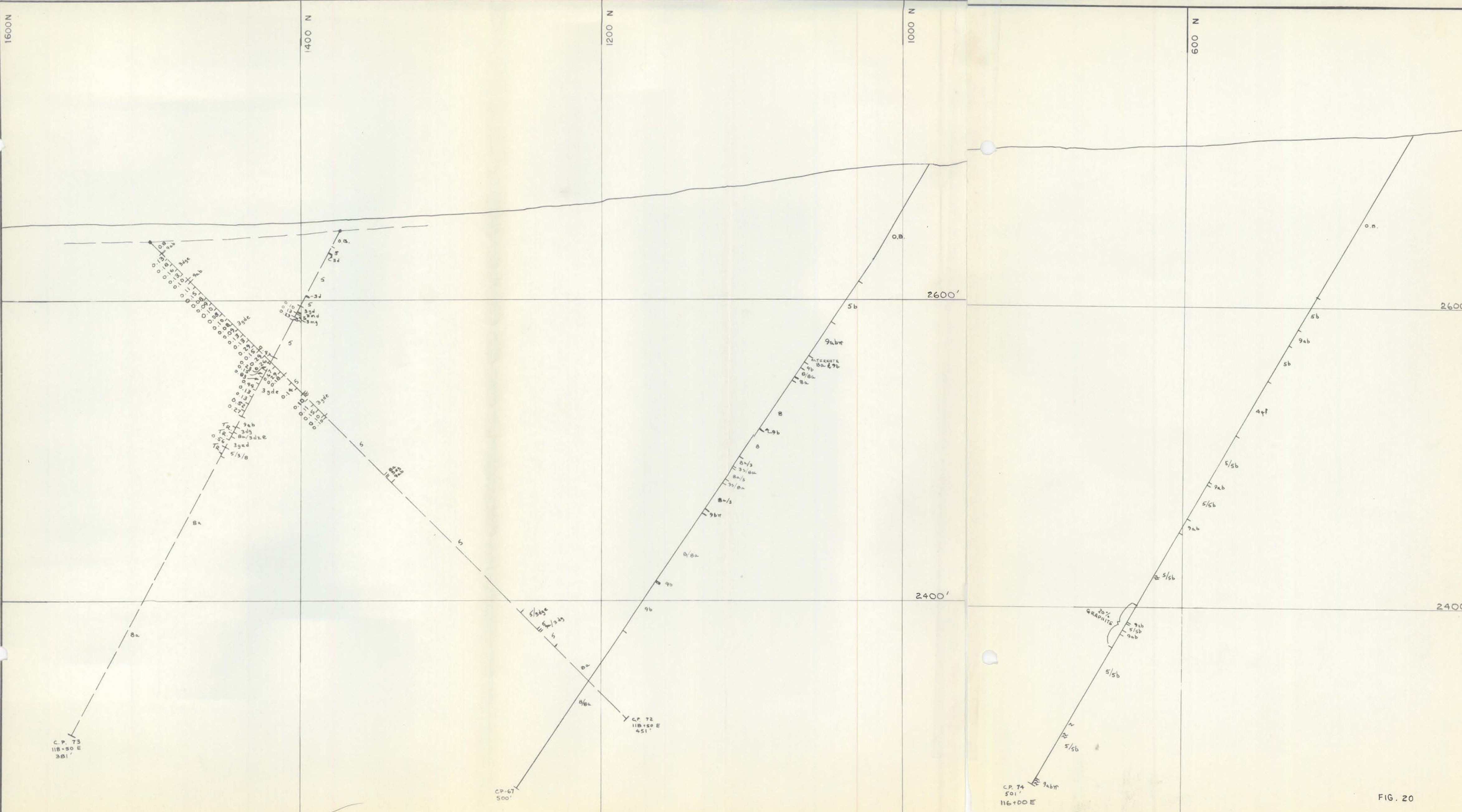
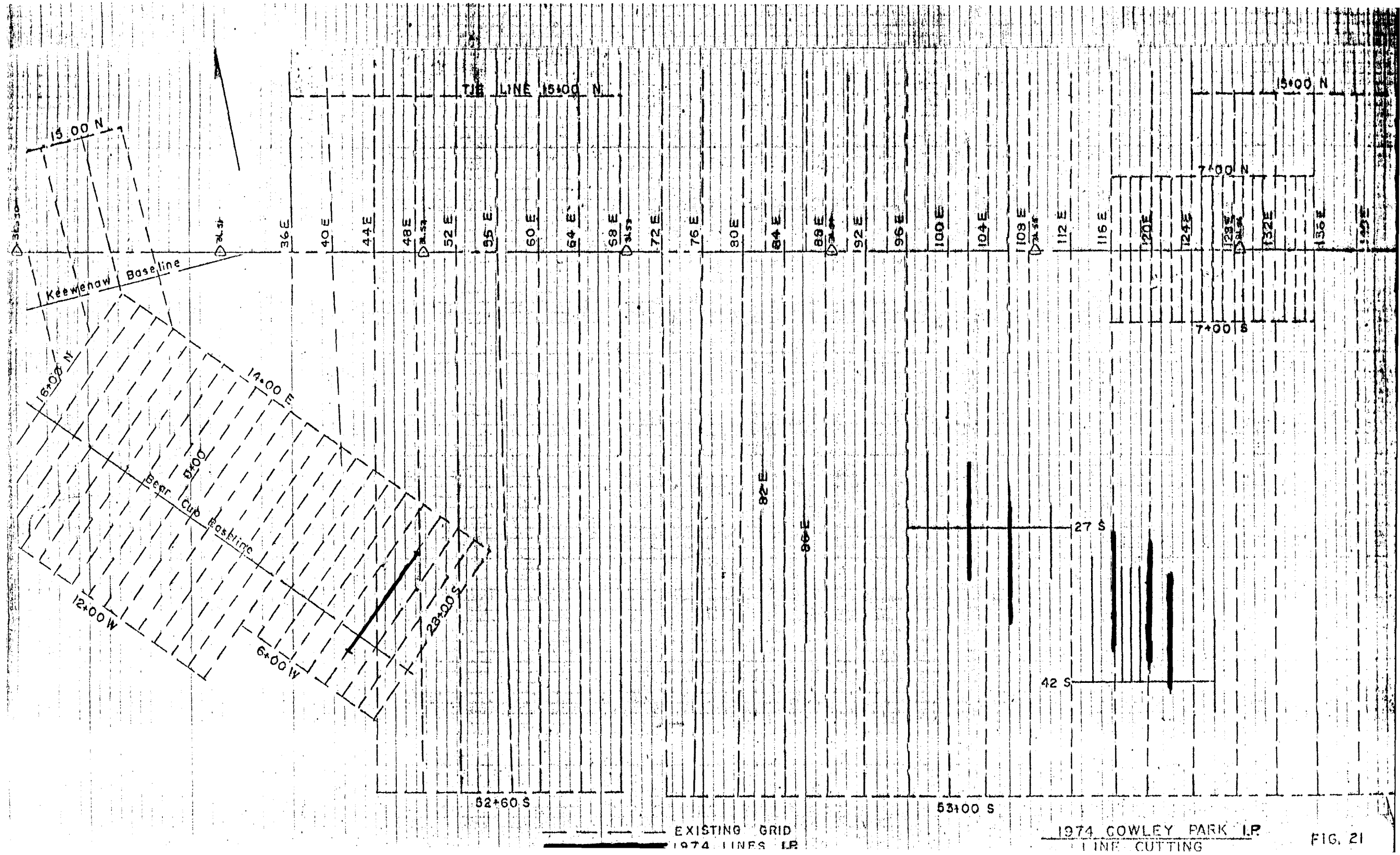


FIG. 20



EXISTING GRID
1974 LINES LP

1974 COWLEY PARK LP
LINE CUTTING

Fig. 19 Section of CP 72-73

Fig. 20 Section of CP 74

Logs of holes are included as annexs to C to J.

INDUCED POLARIZATION SURVEYS

Following the completion of CP 73 a detailed IP survey was completed over the area in which the weak mineralization had been found (CP 72-73), to determine whether better grade mineralization might be expected in the vicinity. Results of the survey were inconclusive. IP response does not correlate well with drilling results. High chargeability and low resistance values were obtained from an area in which barren diorite was intersected in two holes. The structural relationship of the diorite to the sediments may be more complex than that assumed. Lines 102E & 106E, west of CP 72-73 were surveyed to determine whether the skarn zone (assumed to be present from magnetic survey - fig. 13), was likely to be mineralized. Results were negative.

Line 22S (48E) Black Cub Grid was surveyed in an attempt to determine whether the limestone intersected in BLC 47 & 48 was separated from that of BRC 1 in which weak copper mineralization was present. Indication of the presence of an intrusive separating these bands of limestone was suggested by an earlier survey. Evidence to support this interpretation would have indicated that:

- (a) a deeper hole should be drilled from the location of BRC 1.
- (b) a steeper hole north of BLC 47 should be drilled to check the contact.

No evidence of the presence of the intrusive was found in the detailed survey.

Fig. 21 Location of lines on which IP was done.

The report of IP results is included as annex K.

SUMMARY OF EXPENDITURES

Diamond Drilling Costs*

Invoices annex L1 - L15 \$58,532.18

Drill Supervision & Core Logging

A. Hureau, G. McDonald
Annex M. 2,805.60

Magnetometer Surveys

A. Hureau, G. McDonald
Annex N. 370.85

I.P. Surveys

Annex O. 3,188.68

Line Cutting

Annex P. 450.00

Road Repair

Annex Q. 522.68

Assaying 51 assays @ 2.00/assay 102.00

Drafting L. Dahl 2 wks/ 10/21.75 x \$900 =
\$414 + 20% 468.80

1 pickup & 4x4 Apr. 1 - July 8 1,000.00

TOTAL \$67,468.79

* cost of HS 3 applied for under 1973-74, File #N-3668-103

R. A. Hureau
Exploration Geologist

NEW IMPERIAL MINES LIMITED

MINING DIVISION - WHITEHORSE

YUKON TERRITORY

| | | | | |
|---------------------------------|-----------------------|------------------------------|--------------------|------------------------|
| PROPERTY <u>War Eagle North</u> | Claim No. <u>WE20</u> | Strike _____ | Lat. <u>17760N</u> | Hole No. <u>1184</u> |
| Date _____ 19 _____ | Section No. _____ | Dip <u>-90</u> | Dep. <u>550W</u> | Total Depth <u>403</u> |
| Logged By <u>A. Hureau</u> | Plan No. _____ | Level <u>Surface (2538')</u> | Elev. _____ | Page No. <u>1</u> |

| FOOTAGE | | | ROCK CLASSIFICATION Epid Diop Garn Serp Qtz Sil Actino Tremo Chlo Crystalline Shearing Veins Fracturing Foliation Grain Size Texture | MINERALIZATION | | ASSAY DATA | | | | | | |
|---------|-------|-------|---|----------------|---------|------------|-------|-------|-----|-----|------|-------|
| From | To | | | TYPE | % | Sample No | Width | Recov | %Cu | %Fe | Moly | Au/Ag |
| 0 | 20 | Db | | | | | | | | | | |
| 20 | 127 | Hq | Lt to dark fg qte well banded 45° - 60° py dissem and in stringers conformable to bedding, ¼" py strs at 70', 77', 81.5' ¼ - ½" carb filled shear along core 35 - 37' core broken 58 - 60' sections of core weakly magnetic occ bnd (to ½") massive 3g. conformable | py | 2 | | | | | | | |
| 127 | 151 | Hq | Box spilled dk gy - Lt gy well bnded qte (45°) py fg dissem & in strks good coring | | | | | | | | | |
| 151 | 220 | Hqg | Lt - dk gy argillaceous quartzite dark bands very fine grained and contour to 5% py sections thinly banded generally 60°, carbonated | py | 3 | | | | | | | |
| 220 | 228 | Hqg | blk - gy very fine grained broken, py dissem, & on joints | py | 3 | | | | | | | |
| 228 | 261 | Hq | Lt - dk gy bnding gen 60° py dissem & in streaks good coring | | | | | | | | | |
| 261 | 285.5 | Hq/30 | Lt - dk gy bnded qte bnding 60°, bnds replaced by garnet dissem py 3% good coring tr cp samper 363-370 | py cp | 3 tr | 54619 | 7 | 7 | | | | |

NEW IMPERIAL MINES LIMITED
 MINING DIVISION - WHITEHORSE
 YUKON TERRITORY

Hole No. BLC 45 Page No. 2

| FOOTAGE | | | ROCK CLASSIFICATION <small>EPID. DIOP. GARN. SERP. QTZ/SIL. ACTING TREMO. CHLO. CRYSTALLINE. SHEARING. VEINS. FRACTURING. FOLIATION. GRAIN SIZE. TEXTURE</small> | MINERALIZATION | | ASSAY DATA | | | | | | |
|---------|-------|----|--|----------------|----|------------|-------|--------|-----|-----|------|-------|
| From | To | | | TYPE | % | SAMPLE NO. | WIDTH | RECOV. | %CU | %FE | MOLY | AU/AG |
| | | | Deepened (NQ) | | | | | | | | | |
| 128 | 131 | 5b | | | | | | | | | | |
| 131 | 142 | 9b | green black basic dyke hly sheared & broken, carbonated, rubble & breccia dissem py from 140', section 135-139, darker remainder more altered | | | | | | | | | |
| 142 | 143 | 5 | pale gy brecciated ls graphite on fracture faces. | | | | | | | | | |
| 143 | 147 | 9b | med. gy fg andesite dyke core broken | | | | | | | | | |
| 147 | 150.0 | 5 | gy, wh banded ls, bnding 60° | | | | | | | | | |
| 150.0 | 151.3 | 9b | med gy fg basic dyke rubble | | | | | | | | | |
| 151.3 | 163.5 | 7a | pale green hard v.f.g. skarn?, possibly 9a dyke dissem py thruout, broken loc serpd on joints | py | L1 | | | | | | | |

NEW IMPERIAL MINES LIMITED
 MINING DIVISION - WHITEHORSE
 YUKON TERRITORY

Hole No. BLC 45 Page No. 3

| FOOTAGE | | | ROCK CLASSIFICATION <small>EPID. DIOP. GARN. SERP. QTZ/SIL. ACTINO. TREMO. CHLO. CRYSTALLINE. SHEARING VEINS. FRACTURING. FOLIATION. GRAIN SIZE, TEXTURE</small> | MINERALIZATION | | | | ASSAY DATA | | | | |
|---------|-------|----|--|----------------|---|------------|-------|------------|-----|-----|------|-------|
| From | To | | | TYPE | % | SAMPLE NO. | WIDTH | RECOV. | %CU | %FE | MOLY | AU/AG |
| 163.5 | 183.5 | 9b | gy grn basic dyke, andesite xnocrysts to 1/10" broken rubble from 170' | | | | | | | | | |
| 183.5 | 188.5 | 5 | 3' rec very broken | | | | | | | | | |
| 188.5 | 190 | 9b | as above rubble | | | | | | | | | |
| 190 | 192.7 | 9b | ? dk grn white mottled, phase of basic dyke? broken at contacts, magnetic carbonated, may be fine grained phase of mafic diorite | | | | | | | | | |
| 192.7 | 197.7 | 9b | dk gy fg basic dyke v. broken rubble from 196 | | | | | | | | | |
| 197.7 | 205.5 | 5b | blk - lt gy graphitic limestone bnding 70° toward end v. broken mud 198.9 - 199.6 | | | | | | | | | |

NEW IMPERIAL MINES LIMITED
 MINING DIVISION - WHITEHORSE
 YUKON TERRITORY

Hole No. BIC 45 Page No. 5

| FOOTAGE | | | ROCK CLASSIFICATION <small>EPID. DIOP. GARN. SERP. QTZ/SIL. ACTINO TREMO. CHLO. CRYSTALLINE, SHEARING, VEINS, FRACTURING, FOLIATION, GRAIN SIZE, TEXTURE</small> | MINERALIZATION | | | | ASSAY DATA | | | | |
|---------|-------|--------|--|----------------|---|------------|-------|------------|-----|-----|------|-------|
| From | To | | | TYPE | % | SAMPLE NO. | WIDTH | RECOV. | %CU | %FE | MOLY | AU/AG |
| 251 | 251.8 | 9ab/5b | dyke material has replaced light colored limestone bnds retaining graphitic bnds, contact with dyke 60° (lower Ct) | | | | | | | | | |
| 251.8 | 253.4 | 9ab | carbonated pale green dyke | | | | | | | | | |
| 253.4 | 254.4 | 5a | lt & dk graphitic limestone as above bnding gen 60° contains tongues of 9ab dyke | | | | | | | | | |
| 254.4 | 291.6 | 9b | gy grn basic dyke, c g wh - grn mottled section 264-273, core broken, 6" 5b | | | | | | | | | |
| | | 5b | from 279', | | | | | | | | | |
| | | 4a | bxd section 285.5-287' lower ct chilled 80° | | | | | | | | | |

NEW IMPERIAL MINES LIMITED
 MINING DIVISION - WHITEHORSE
 YUKON TERRITORY

Hole No. BLC 45 Page No. 6

| FOOTAGE | | | ROCK CLASSIFICATION <small>EPID. DIOP. GARN. SERP. QTZ/SIL. ACTINO TREMO. CHLO. CRYSTALLINE SHEARING VEINS FRACTURING FOLIATION GRAIN SIZE TEXTURE</small> | MINERALIZATION | | | | ASSAY DATA | | | | |
|---------|-------|------|--|----------------|---|------------|-------|------------|-----|-----|------|-------|
| From | To | | | TYPE | % | SAMPLE NO. | WIDTH | RECOV. | %CU | %FE | MCLY | AU/AG |
| 291.6 | 320.5 | 9ab | γ green porphyritic dyke felds laths to 3/8" dia make up 50% of composition, last 1.5' sheared, altd 60° contains remnants 5b | | | | | | | | | |
| 320.5 | 375.5 | 5/5b | lt & dk gy well bnded limestone, good coring bnding 80° shrd for last 1' at contact, 2" graphite & mud | | | | | | | | | |
| 375.5 | 395.2 | 9ab | med gy, grn dyke fg lower ct 45° incl 6", 5b from 391' core broken, rubble 384-386, 388-390 392-395 | | | | | | | | | |
| 395.2 | 404.8 | 5b | lt & dk gy graphitic limestone, well bnded 70° good coring | | | | | | | | | |

NEW IMPERIAL MINES LIMITED
 MINING DIVISION - WHITEHORSE
 YUKON TERRITORY

Hole No. BLC 45 Page No. 7

| FOOTAGE | | | ROCK CLASSIFICATION <small>EPID. DIOP. GARN. SERP. QTZ/SIL. ACTINO TREMO. CHLD. CRYSTALLINE. SHEARING. VEINS. FRACTURING. FOLIATION. GRAIN SIZE, TEXTURE</small> | MINERALIZATION | | | | ASSAY DATA | | | | |
|---------|-------|-------|--|----------------|---|------------|-------|------------|-----|-----|------|-------|
| From | To | | | TYPE | % | SAMPLE NO. | WIDTH | RECOY. | %CU | %FE | MOLY | AU/AG |
| 404.8 | 408 | 9ab | pale med grn dyke, fg cts 70° | | | | | | | | | |
| 408 | 427 | 5/3 | dk - lt gy graphitic limestone, bnding 80°, not well preserved sections skarnified 3d, 5 has been highly fract'd, fract's cte filled | | | | | | | | | |
| 427 | 438.2 | 5/3d | Wh - grn, gy limestone bnding destroyed, skarnified sections contain 2-3% py, sheard, serpd at lower ct | | | | | | | | | |
| 438.2 | 441.2 | 9ab 7 | possibly 3d, green carbonated lower-ct appears chilled 45°, hvy py at ct | | | | | | | | | |
| 441.2 | 448.3 | 5b | well bnded graphitic ls bnding, contorted, at 443' & 447', 4" bnds replaced by 9ab possibly 3d | | | | | | | | | |

NEW IMPERIAL MINES LIMITED
 MINING DIVISION - WHITEHORSE
 YUKON TERRITORY

| FOOTAGE | | | ROCK CLASSIFICATION <small>EPID. DIOP. GARN. SERP. QTZ/SIL. ACTINO TREMO. CHLO. CRYSTALLINE. SHEARING. VEINS. FRACTURING. FOLIATION. GRAIN SIZE. TEXTURE</small> | MINERALIZATION | | ASSAY DATA | | | | | | |
|---------|-------|-------|--|----------------|---|------------|-------|--------|-----|-----|------|-------|
| From | To | | | TYPE | % | SAMPLE NO. | WIDTH | RECOY. | %CU | %FE | MOLY | AU/AG |
| 448.3 | 457 | 9ab | pale grn, possibly skarn incis of 5b to 2% py, fair coring | | | | | | | | | |
| 457 | 458.8 | 5b/3d | bnded, 70° graphitic Ls, some bnds skarnified | | | | | | | | | |
| 458.8 | 474 | 3ds/5 | pale gy grn, soft skarnified Ls, showing remnants & relic bnding 5b highly fractd, & healed good coring to 2% py | py | 2 | | | | | | | |
| 474 | 477 | 9b | dk grn cg basic dyke core very broken chloritized, magnetic (3sm?) sample 474-477 | | | 54622 | | | | | | |
| 477 | 500 | | Fault, 11' recovery to 496.6, 9b frags (3sm?) few frags -5b 496.6 - 500, 5b & mud, 2' rec | | | | | | | | | |

NEW IMPERIAL MINES LIMITED
 MINING DIVISION - WHITEHORSE
 YUKON TERRITORY

Hole No. BIC 45 Page No. 9

| FOOTAGE | | | ROCK CLASSIFICATION <small>EPID. DIOP. GARN. SERP. QTZ/SIL. ACTINO. TREMO. CHLO. CRYSTALLINE. SHEARING VEINS. FRACTURING. FOLIATION. GRAIN SIZE. TEXTURE</small> | MINERALIZATION | | | ASSAY DATA | | | | | |
|---------|-------|-------|--|----------------|---|------------|------------|--------|-----|-----|------|-------|
| From | To | | | TYPE | % | SAMPLE NO. | WIDTH | RECOV. | %CU | %FE | MOLY | AU/AG |
| 500 | 507 | 5/5b | lt gy ls, graphite on slip faces, bnding contorted, 1/2" bnd 9b along core from 504' conformable to bnding | | | | | | | | | |
| 507 | 512 | 9b | 10c 9b7, dr gy-bin basic dyke c+s chilled 20° | | | | | | | | | |
| 512 | 514.5 | 5b | lt - dk, contorted graphitic limestone | | | | | | | | | |
| 514.5 | 541.6 | 9ab 7 | gy fg dyke sparse Xnocrysts, sometimes chloritized, py dissem near fract. Core very broken 516.9-519 fault, gouge 532-537 Rubble 538-542 Rubble | | | | | | | | | |

NEW IMPERIAL MINES LIMITED
 MINING DIVISION - WHITEHORSE
 YUKON TERRITORY

Hole No. BIC 45 Page No. 10

| FOOTAGE | | | ROCK CLASSIFICATION <small>EPID. DIOP. GARN. SERP. QTZ/SIL. ACTINO TREMO. CHLO. CRYSTALLINE. SHEARING. VEINS. FRACTURING. FOLIATION. GRAIN SIZE. TEXTURE</small> | MINERALIZATION | | | ASSAY DATA | | | | | |
|---------|-------|-------|--|----------------|---|------------|------------|--------|-----|-----|------|-------|
| From | To | | | TYPE | % | SAMPLE NO. | WIDTH | RECOV. | %CU | %FE | MOLY | AU/AG |
| 541.6 | 544 | 4c/3 | med gy, very broken, dissem py to 2%, 10c faint dioritic text carbonated | py | 2 | | | | | | | |
| 544 | 571 | | Bofe spilled, mainly limey qte, sections lchd, broken, 3 or 4 sections mud & gouge to 6", minor 8a, & 9b | | | | | | | | | |
| 571 | 573.8 | | mud & breccia, fragments of grey clastic sed or 9ab dyke | | | | | | | | | |
| 573.8 | 574.9 | 3 | w, f, l, white skarn, lchd, carb'd broken | | | | | | | | | |
| 574.9 | 578.3 | 9b 2c | dk gy gm basic dyke lower at 60° | | | | | | | | | |
| 578.3 | 589 | 3f/8a | wh to pink, gy shrd & lchd, dioritized sed very broken, num carb filled joints & fract | | | | | | | | | |

NEW IMPERIAL MINES LIMITED
 MINING DIVISION - WHITEHORSE
 YUKON TERRITORY

Hole No. BIC 45 Page No. 11

| FOOTAGE | | ROCK CLASSIFICATION <small>EPID. DIOP. GARN. SERP. QTZ/SIL. ACTINO TREMO. CHLO. CRYSTALLINE. SHEARING. VEINS. FRACTURING. FOLIATION. GRAIN SIZE. TEXTURE</small> | MINERALIZATION | | ASSAY DATA | | | | | | | |
|---------|-----|--|----------------|-----|------------|-------|--------|-----|-----|------|-------|--------|
| From | To | | TYPE | % | SAMPLE No. | WIDTH | RECOV. | %CU | %FE | MOLY | AU/AG | INSOL. |
| 578.7 | 589 | cont'd | | | | | | | | | | |
| | | patchy dissem py | py | 1/2 | | | | | | | | |
| 589 | 634 | Db dk gy grn basic dyke | | | | | | | | | | |
| | | xnocrysts to 1/16" altd | | | | | | | | | | |
| | | chlorite and orepidote, | | | | | | | | | | |
| | | hvly carb'd, lower ct | | | | | | | | | | |
| | | 10° sections to 600' | | | | | | | | | | |
| | | may be altd clastic sed | | | | | | | | | | |
| | | core broken | | | | | | | | | | |
| 634 | 706 | Ba white, gy grn mottled, | | | | | | | | | | |
| | | mafic minerals occ, | | | | | | | | | | |
| | | veinlets of white or green | | | | | | | | | | |
| | | serpentine along fract | | | | | | | | | | |
| | | carbd, dissem fg py | | | | | | | | | | |
| | | thruout | | | | | | | | | | |
| | 706 | Hole ends | | | | | | | | | | |
| | | Caron Diamond Drilling | | | | | | | | | | |
| | | NQ to 478' | | | | | | | | | | |
| | | BQ to 706 | | | | | | | | | | |

NEW IMPERIAL MINES LIMITED
 MINING DIVISION - WHITEHORSE
 YUKON TERRITORY

Hole No. BLC 46 Page No. 2

| FOOTAGE | | | ROCK CLASSIFICATION <small>EPID. DIOP. GARN. SERP. QTZ/SIL. ACTING TREMO. CHLO. CRYSTALLINE. SHEARING. VEINS. FRACTURING. FOLIATION. GRAIN SIZE. TEXTURE</small> | MINERALIZATION | | | | ASSAY DATA | | | | |
|---------|-------|-----|--|----------------|------|------------|-------|------------|-----|-----|------|-------|
| From | To | | | TYPE | % | SAMPLE NO. | WIDTH | RECOV. | %Cu | %Fe | MOLY | AU/AG |
| 155.2 | 157 | 5b | locally graphite on shears to 1" | | | | | | | | | |
| 157 | 157.4 | 9ab | | | | | | | | | | |
| 157.4 | 160 | 5b | sheared & very broken graphite on shears to 1/2" | | | | | | | | | |
| 160 | 163 | 9ab | rubble of 9ab and some 5 faulted | | | | | | | | | |
| 163 | 163.8 | 5b | | | | | | | | | | |
| 163.8 | 164.5 | 9ab | broken rubble; faulted | | | | | | | | | |
| 164.5 | 164.8 | 5b | faulted to 166 | | | | | | | | | |
| 164.8 | 171.2 | 9ab | very occasional py and some hematite @ 165.5 | | | | | | | | | |
| 171.2 | 179 | 5b | banding @ 30° shears contain graphite | | | | | | | | | |
| 179 | 192 | 4q | upper contact @ 90° minor dissem. py | py | < 2% | | | | | | | |
| 192 | 197.5 | 8a | 192 - 193 sheared and broken some mafic alteration to ep and chlorite minor py lower contact sheared; chlō developed | py | < 1% | | | | | | | |
| 197.5 | 210 | 4q | very f.g. with minor py dissem throughout hematite in carbonate - filled gashes 208 - 208.6 | py | 2% | | | | | | | |

NEW IMPERIAL MINES LIMITED
 MINING DIVISION - WHITEHORSE
 YUKON TERRITORY

Hole No. BLC 46 Page No. 3

| FOOTAGE | | ROCK CLASSIFICATION EPID. DIOP. GARN. SERP. QTZ/SIL. ACTINO TREMO. CHLO. CRYSTALLINE. SHEARING VEINS. FRACTURING. FOLIATION. GRAIN SIZE. TEXTURE | MINERALIZATION | | | | ASSAY DATA | | | | | |
|---------|-------|---|----------------|-----|------------|-------|------------|-----|-----|------|-------|-------|
| From | To | | TYPE | % | SAMPLE NO. | WIDTH | RECOV. | %CU | %FE | MOLY | AU/AG | INSOL |
| 197.5 | 210 | 4q cont'd considerable shearing with accompanying chlo | | | | | | | | | | |
| 210 | 211 | 4q/8a rubble; py dissem throughout to 2% py especially heavy (massive to 1/8") on fractures | py | 2% | | | | | | | | |
| 211 | 211.6 | 4q rubble of 4q minor py dissem throughout | | | | | | | | | | |
| 211.6 | 222 | 4q py locally massive in fractures to 1/8"; dissem throughout Dykes 8a included as follows: 211.6 - 212 214 - 214.6 216.8 - 217 banding @ 30° - 40° | py | 2%+ | | | | | | | | |
| 222 | 223.2 | 9ab upper contact @ 80° | | | | | | | | | | |
| 223.2 | 234.8 | 4q py massive in fractures to 1/8" occas. dioritic texture banding & shearing @ 60° | | | | | | | | | | |
| 234.8 | 252.3 | 9ab upper contact 35° lower contact 40° | | | | | | | | | | |

NEW IMPERIAL MINES LIMITED
 MINING DIVISION - WHITEHORSE
 YUKON TERRITORY

Hole No. BLC 46 Page No. 4

| FOOTAGE | | | ROCK CLASSIFICATION <small>EPID. DIOP. GARN. SERP. QTZ/SIL. ACTINO. TREMO. CHLO. CRYSTALLINE. SHEARING. VEINS. FRACTURING. FOLIATION. GRAIN SIZE. TEXTURE</small> | MINERALIZATION | | ASSAY DATA | | | | | | |
|---------|-------|-----|---|----------------|------|------------|-------|--------|-----|-----|------|-------|
| From | To | | | TYPE | % | SAMPLE NO. | WIDTH | RECOV. | %CU | %FE | MOLY | AU/AG |
| 252.3 | 284 | 4q | minor py disseminated throughout banding @ 60° locally hem in carbonate - filled tension gashes occasional dioritic texture 8a dykes as follows: 268.4 - 269.6 272 - 272.4 | py | 2% | | | | | | | |
| 284 | 302.5 | 9ab | } rubble dyke | | | | | | | | | |
| 302.5 | 303 | 8a | | | | | | | | | | |
| 303 | 326 | 4q | banding @ 20° - 30° hem disseminated occasional minor py disseminated throughout 4q is carbonaceous | hem | 2% | | | | | | | |
| 326 | 329.8 | 9ab | | | | | | | | | | |
| 329.8 | 350.8 | 4q | banding @ 20° py occasional massive on small fractures hem locally massive in carb. filled tension gashes occasional dioritized | py | > 2% | | | | | | | |
| 350.8 | 355 | 9ab | upper contact @ 70° lower contact @ 70° | hem | 2% | | | | | | | |

NEW IMPERIAL MINES LIMITED

MINING DIVISION - WHITEHORSE
YUKON TERRITORY

Hole No. BLC 46 Page No. 5

| FOOTAGE | | | ROCK CLASSIFICATION EPID. DIOP. GARN. SERP. QTZ/SIL. ACTINO TREMO. CHLO. CRYSTALLINE. SHEARING. VEINS. FRACTURING. FOLIATION. GRAIN SIZE. TEXTURE | MINERALIZATION | | ASSAY DATA | | | | | | |
|---------|-------|-----|---|----------------|----|------------|-------|--------|-----|-----|------|-------|
| From | To | | | TYPE | % | SAMPLE No. | WIDTH | RECOV. | %CU | %FE | MOLY | AU/AG |
| 355 | 371 | 4q | ocass. hem banding @ 30° 9ab dyke 359 - 360 | py | 2% | | | | | | | |
| 371 | 373 | 9ab | rubble | hem | 4% | | | | | | | |
| 373 | 382 | 4q | banding @ 35° 379.5 - 380 9ab minor dissem py throughout | | | | | | | | | |
| 382 | 389.5 | 8a | upper contact @ 80° 9ab inclusion 385.5 - 386.5 | | | | | | | | | |
| 389.5 | 395 | 4q | banding @ 30° v. minor py dissem throughout | | | | | | | | | |
| 395 | 401 | 8a | lower contact @ 60° | | | | | | | | | |
| 401 | 409 | 4q | banding @ 45° minor dissem py | | | | | | | | | |
| 409 | 413.5 | 9ab | 8a included 410 - 411.4 upper contact 10° | | | | | | | | | |
| 413.5 | 416.5 | 4q | rubble banding 20° f.g. grey - green rock | | | | | | | | | |
| 416.5 | 420.1 | 8a | v. contact @ 70° | | | | | | | | | |
| 420.1 | 427.5 | 9ab | v. contact @ 45° | | | | | | | | | |
| 427.5 | 442.8 | 9ab | v. contact @ 40° inclusion of 4qf 438 - 439 | | | | | | | | | |

NEW IMPERIAL MINES LIMITED
 MINING DIVISION - WHITEHORSE
 YUKON TERRITORY

Hole No. BLC 46 Page No. 6

| FOOTAGE | | | ROCK CLASSIFICATION <small>EPID. DIOP. GARN. SERP. QTZ/SIL. ACTINO TREMO. CHLO. CRYSTALLINE. SHEARING. VEINS. FRACTURING. FOLIATION. GRAIN SIZE. TEXTURE</small> | MINERALIZATION | | ASSAY DATA | | | | | | |
|---------|-------|-----|---|----------------|------|------------|-------|--------|-----|-----|------|-------|
| From | To | | | TYPE | % | SAMPLE NO. | WIDTH | RECOV. | %CU | %FE | MOLY | AU/AG |
| 442.8 | 446 | 4q | upper contact @ 20° banding @ 10 - 15° occas. ep. replacing carbonaceous - rich gashes rock is grey, f.g. and carbonaceous py dissem. | py | < 2% | | | | | | | |
| 446 | 447.5 | 8b | rubble | | | | | | | | | |
| 447.5 | 448 | 8a | v. contact 60° | | | | | | | | | |
| 448 | 450.5 | 4q | rubble much dioritized | | | | | | | | | |
| 450.5 | 455 | 8ab | rubble inclusion of 8a from 451 - 451.5 | | | | | | | | | |
| 455 | 492.5 | 4q | carbonate - filled gashes @ 10° locally stringers of f.g. dyke to 1" rock is partly dioritized banding @ 15 - 20° 467.5 - 467.8 466.5 - 466.9 occasionally rock is 4qf and has dioritic texture v. minor py dissem throughout | py | < 1% | | | | | | | |

NEW IMPERIAL MINES LIMITED
 MINING DIVISION - WHITEHORSE
 YUKON TERRITORY

Hole No. BLC 46 Page No. 7

| FOOTAGE | | | ROCK CLASSIFICATION <small>EPID. DIOP. GARN. SERP. Q'Z/SIL. ACTINO TREMO. CHLO. CRYSTALLINE. SHEARING. VEINS. FRACTURING. FOLIATION. GRAIN SIZE. TEXTURE</small> | MINERALIZATION | | ASSAY DATA | | | | | | |
|---------|-------|-------|--|----------------|-----|------------|-------|--------|-----|-----|------|-------|
| From | To | | | TYPE | % | SAMPLE NO. | WIDTH | RECOV. | %CU | %FE | MOLY | AU/AG |
| 499.5 | 501.8 | 8a | rubble | | | | | | | | | |
| 501.8 | 512.4 | 8g/8a | locally porphyritic fs. in dk grn rock banding 60° dyke 8a 511-511.5 | | | | | | | | | |
| 512.4 | 521 | 8ab | rubble | | | | | | | | | |
| 521 | 521.9 | 8g | massive garnet skarn | | | | | | | | | |
| 521.9 | 523.8 | 8ab | | | | | | | | | | |
| 523.8 | 528 | 8gs | banding @ 20° occas. diop/serp minor magnetite cpy dissem | cpy | 2% | | | | | | | |
| 528 | 538.8 | 8q | med. gr. minor py banding @ 20° | | | | | | | | | |
| 538.8 | 539.6 | 8a | | | | | | | | | | |
| 539.6 | 541 | 8da | weakly magnetic weakly dioritic @ upper contact | | | | | | | | | |
| 541 | 553.5 | 8g | v. contact @ 15° heavily carbonated along fractures banding @ 20° accessory minerals include d, e (in carb. stringers) a & zoisite fracture @ 544.6 @ 15° cont. mal | cp | 41% | | | | | | | |

NEW IMPERIAL MINES LIMITED
 MINING DIVISION - WHITEHORSE
 YUKON TERRITORY

Hole No. BLC 46 Page No. 8

| FOOTAGE | | | ROCK CLASSIFICATION <small>EPID. DIOP. GARN. SERP. QTZ/SIL. ACTINO TREMO. CHLO. CRYSTALLINE. SHEARING VEINS. FRACTURING. FOLIATION. GRAIN SIZE. TEXTURE</small> | MINERALIZATION | | ASSAY DATA | | | | | | |
|---------|-------|------|---|----------------|-------|------------|-------|--------|-----|-----|------|-------|
| From | To | | | TYPE | % | SAMPLE NO. | WIDTH | RECOV. | %CU | %FE | MOLY | AU/AG |
| 553.5 | 556 | 3a/3 | Dyke of 8a contaminated by 3g & 4q | | | | | | | | | |
| 556 | 557.5 | 4q | | | | | | | | | | |
| 557.5 | 560.2 | 3gda | Carbonated stringers/quartz stringers 1/4" wide occas. rep. by e v. contact @ 70° magnetite patches 1/4" mag & ep seem to follow qtz stringers | | | | | | | | | |
| 560.2 | 561.7 | 4q | v. contact 45° | | | | | | | | | |
| 561.7 | 564.5 | 3gda | qtz veins to 1" accompany mag. rock is brownish-red garnet with d & a patches | cp | <0.5% | | | | | | | |
| 564.5 | 568 | 4q/3 | rubble in part skarnified minor dissem. py | | | | | | | | | |
| 568 | 570 | 3ab | v. contact 60° rubble from 569-570 | | | | | | | | | |
| 570 | 587 | 4q/3 | contact indet. in rubble banding @ 20° locally 3g bands 575-576 rock is med. gr. greenish color Dyke 8a: 577.2-578.2 | | | | | | | | | |

NEW IMPERIAL MINES LIMITED
 MINING DIVISION - WHITEHORSE
 YUKON TERRITORY

Hole No. BLC 46 Page No. 9

| FOOTAGE | | | ROCK CLASSIFICATION EPID. DIOP. GARN. SERP. QTZ/SIL. ACTING TREMO. CHLO. CRYSTALLINE. SHEARING. VEINS. FRACTURING. FOLIATION. GRAIN SIZE, TEXTURE | MINERALIZATION | | ASSAY DATA | | | | | | | | |
|---------|-------|------|---|----------------|------|------------|-------|--------|-----|-----|------|-------|-------|--|
| From | To | | | TYPE | % | SAMPLE NO. | WIDTH | RECOV. | %CU | %FE | MOLY | AU/AG | INSOL | |
| 570 | 587 | 1q/5 | cont'd 582-583.5 locally py to 5% over 8" dissem throughout very occas. cpy flecks magnetic 580.5-582 | py | < 1% | | | | | | | | | |
| 587 | 602.5 | 1qf | banding & fractures @ 15°-20° greyish rock with fs. porphyries | | | | | | | | | | | |
| 602.5 | 604.5 | 9ab | f.g. greenish dyke v. contact 70° | | | | | | | | | | | |
| 604.5 | 623.8 | 3/4g | v. contact 70° relict banding @ 20° f.s. porphyritic occas. fractures filled with ep | | | | | | | | | | | |
| 623.8 | 670.5 | 8 | v. contact @ 70° f.g. diorite dyke with upper & lower chill margins 1' wide with porphyritic phenocrysts of fs 9b inclusion 659.5-659.8 | | | | | | | | | | | |
| 670.5 | 673.8 | 3a | v. contact 60° | | | | | | | | | | | |
| 673.8 | 676 | 3/4g | relict banding 20° | | | | | | | | | | | |

NEW IMPERIAL MINES LIMITED
 MINING DIVISION - WHITEHORSE
 YUKON TERRITORY

Hole No. BIC 46 Page No. 10

| FOOTAGE | | | ROCK CLASSIFICATION <small>EPID. DIOP. GARN. SERP. QTZ/SIL. ACTINO. TREMO. CHLO. CRYSTALLINE. SHEARING. VEINS. FRACTURING. FOLIATION. GRAIN SIZE. TEXTURE</small> | MINERALIZATION | | | | ASSAY DATA | | | | |
|---------|-------|----|---|----------------|---|------------|-------|------------|-----|-----|------|-------|
| From | To | | | TYPE | % | SAMPLE NO. | WIDTH | RECOY. | %CU | %FE | MOLY | AU/AG |
| 676 | 692.4 | 4q | No banding med. gr. greyish rock has upper/lower chill margins fragments are in the diorite below | | | | | | | | | |
| 692.4 | 728.5 | 8 | v. contact 45° locally small dykes of 8a 1" wide med. gr. diorite | | | | | | | | | |
| 728.5 | 733 | 8a | v. coarse gr. mafic min 60% (amphibole?) | | | | | | | | | |
| 733 | 739 | 4q | occas. dissem py | | | | | | | | | |
| 743 | 745 | 4q | rubble banding (?) 60° minor dissem py | | | | | | | | | |
| 745 | 758 | 8 | med. gr. diorite | | | | | | | | | |
| 758 | 762 | 9a | peg. dyke occas. py dissem | | | | | | | | | |
| 762 | 770.5 | 7 | altered f.g. granodiorite | | | | | | | | | |
| 770.5 | 775 | 9a | peg. dyke | | | | | | | | | |
| 775 | 792.5 | 8 | v. contact @ 60° gradational med. gr. - fine gr. diorite | | | | | | | | | |
| 792.5 | 794 | 9a | peg. dyke | | | | | | | | | |

NEW IMPERIAL MINES LIMITED
 MINING DIVISION - WHITEHORSE
 YUKON TERRITORY

Hole No. BLC 46 Page No. 11

| FOOTAGE | | | ROCK CLASSIFICATION <small>EPID. DIOP. GARN. SERP. QTZ/SIL. ACTINO. TREMO. CHLO. CRYSTALLINE. SHEARING. VEINS. FRACTURING. FOLIATION. GRAIN SIZE. TEXTURE</small> | MINERALIZATION | | ASSAY DATA | | | | | | |
|---------|-------|------|---|----------------|---|------------|-------|--------|-----|-----|------|-------|
| From | To | | | TYPE | % | SAMPLE NO. | WIDTH | RECOV. | %CU | %FE | MOLY | AU/AG |
| 794 | 803 | 4q/3 | V. contact 20° locally 3g patches in 4q also 4qf in part | | | | | | | | | |
| 803 | 804 | 8 | v. contact 70° | | | | | | | | | |
| 804 | 805 | 4q/3 | v. contact 70° greenish rock with minor alteration to 3g | | | | | | | | | |
| 805 | 807.5 | 8 | greyish med. gr. diorite | | | | | | | | | |
| 807.5 | 814 | 4qf | v. contact @ 50° rubble 812-814 | | | | | | | | | |
| 814 | 825.4 | 8a | minor inclusions of 4q 6" or less wide 819-820.5 inclusion 9ab 824-824.2 | | | | | | | | | |
| 825.4 | 858 | 8 | med. gr. diorite gradional from 8a above 858 End of Hole | | | | | | | | | |
| | | | NQ 0-570 BQ 570-858 | | | | | | | | | |
| | | | Drilled by Caron D.D. Ltd. | | | | | | | | | |

NEW IMPERIAL MINES LIMITED
 MINING DIVISION - WHITEHORSE
 YUKON TERRITORY

Hole No. CP-71 Page No. 2

| FOOTAGE | | | ROCK CLASSIFICATION <small>EPID. DIOP. GARN. SERP. QTZ/SIL. ACTINO. TREMO. CHLO. CRYSTALLINE SHEARING. VEINS. FRACTURING. FOLIATION. GRAIN SIZE. TEXTURE</small> | MINERALIZATION | | ASSAY DATA | | | | | | |
|---------|-------|------------|--|----------------|----|------------|-------|--------|-----|-----|------|-------|
| From | To | | | TYPE | % | SAMPLE NO. | WIDTH | RECOV. | %CU | %FE | MOLY | AU/AG |
| 161.2 | 185.6 | S | banding @ 60-80° (irregular) graphite on fractures. | | | | | | | | | |
| 185.6 | 192 | 3d† | f.g. greenish rock py. dissem throughout. locally to 5% over 1" faulted @ lower contact. | | | | | | | | | |
| 192 | 209 | 5/5b ~w | banding var. 60-80° faulted @ the end. | | | | | | | | | |
| 209 | 211 | 9ab: ~ | faulted; greenish dyke v. f.g. | | | | | | | | | |
| 211 | 224.6 | S | banding var 60°-90° alternating grey/white stringers | | | | | | | | | |
| 224.6 | 228.8 | 9ab | l. contact 30° | | | | | | | | | |
| 228.8 | 237 | S | greyish med. gr./f.g. limestone | | | | | | | | | |
| 237 | 238 | 9ab | -faulted, rubble | | | | | | | | | |
| 238 | 254 | S | alt. bands H/dk limestone stringers occas. calcite xls in vugs | | | | | | | | | |
| 254 | 273 | 4a/5† | greenish, somewhat limy rock py. dissem throughout graphite on fractures much of core is rubble | py | 1% | | | | | | | |

NEW IMPERIAL MINES LIMITED
 MINING DIVISION - WHITEHORSE
 YUKON TERRITORY

Hole No. CP 7.1 Page No. 3

| FOOTAGE | | | ROCK CLASSIFICATION <small>EPID. DIOP. GARN. SERP. QTZ/SIL. ACTINO TREMO. CHLO. CRYSTALLINE SHEARING. VEINS. FRACTURING. FOLIATION. GRAIN SIZE. TEXTURE</small> | MINERALIZATION | | ASSAY DATA | | | | | | |
|---------|-------|-------|---|----------------|-----|------------|-------|--------|-----|-----|------|-------|
| From | To | | | TYPE | % | SAMPLE NO. | WIDTH | RECOV. | %CU | %FE | MOLY | AU/AG |
| 273 | 287 | 5 | banding var 60-90° bands are crenulated & contorted | | | | | | | | | |
| 287 | 298.9 | 4 2/3 | f.g. greenish rock py. dissem throughout lower contact altered, 30° locally py to 10% over 1" @ 298.6 | py | 2% | | | | | | | |
| 298.9 | 337 | 5 | f.g. greyish rock py dissem throughout occas. banding 35° | py | <1% | | | | | | | |
| 337 | 337.8 | 7/8 | contacts 15-20° | | | | | | | | | |
| 337.8 | 364.5 | 5 | c.gr. white recrystallized limestone relict banding 30-40° H. grey - black good core minor py. dissem; graphite in part | py | 1% | | | | | | | |
| 364.5 | 365 | 7/8 | f.g. greenish dyke u. contact 20° | | | | | | | | | |
| 365 | 415 | 5 | whit, c.gr., recrystallized limestone | | | | | | | | | |
| 415 | 416.5 | 7/8 | contacts 15-20° | | | | | | | | | |
| 416.5 | 507 | 5 | c.gr. whit recrystallized limestone relict banding 70° NW faulted 452-454 change NQ - BQ @ 507 | | | | | | | | | |

NEW IMPERIAL MINES LIMITED
 MINING DIVISION - WHITEHORSE
 YUKON TERRITORY

Hole No. CP-71 Page No. 4

| FOOTAGE | | | ROCK CLASSIFICATION <small>EPID. DIOP. GARN. SERP. QTZ/SIL. ACTINO TREMO. CHLO. CRYSTALLINE. SHEARING. VEINS. FRACTURING. FOLIATION. GRAIN SIZE. TEXTURE</small> | MINERALIZATION | | ASSAY DATA | | | | | | |
|---------|-------|------|--|----------------|---|------------|-------|--------|-----|-----|------|-------|
| From | To | | | TYPE | % | SAMPLE NO. | WIDTH | RECOY. | %CU | %FE | MOLY | AU/AG |
| 507 | 576 | 4q/s | | | | | | | | | | |
| 576 | 638 | 5 | c.g. white recrystallized limestone good core | | | | | | | | | |
| 638 | 639 | 1q | f.g. greenish rock | | | | | | | | | |
| 639 | 702 | 5 | c.g. white recrystallized limestone good core | | | | | | | | | |
| 702 | 707 | 4q/s | partly serpentinized quartzite broken core, faulted no mineralization | | | | | | | | | |
| 707 | 709 | 5 | rubble in core of 5 | | | | | | | | | |
| 709 | 717.5 | 4q/s | v. minor py discon f.g. greenish rock very minor serpentinization | | | | | | | | | |
| 717.5 | 746 | 5 | c.g. white recrystallized limestone | | | | | | | | | |
| 746 | 762 | 4q/s | f.g. greenish rock occas. banding 20° | | | | | | | | | |
| 762 | 782 | 8a | magnetic dyke l. contact 10°-15° | | | | | | | | | |
| 782 | 801 | 4q/s | f.g. greenish rock relict banding 70° | | | | | | | | | |
| 801 | 806 | 8a | dyke contacts obscure | | | | | | | | | |
| 806 | 856 | 5/3 | c.g. white recrystallized limestone banding 60-70° | | | | | | | | | |

NEW IMPERIAL MINES LIMITED
 MINING DIVISION - WHITEHORSE
 YUKON TERRITORY

Hole No. CP.71 Page No. 5

| FOOTAGE | | | ROCK CLASSIFICATION <small>EPID. DIOP. GARN. SERP. QTZ/SIL. ACTINO TREMO. CHLO. CRYSTALLINE. SHEARING. VEINS. FRACTURING. FOLIATION. GRAIN SIZE. TEXTURE</small> | MINERALIZATION | | ASSAY DATA | | | | | | |
|---------|-------|------|--|----------------|-----|------------|-------|--------|-----|-----|------|-------|
| From | To | | | TYPE | % | SAMPLE NO. | WIDTH | RECOV. | %CU | %FE | MOLY | AU/AG |
| 806 | 856 | 5/3 | Contd g+d skarn as follows: 836 - 836.2 837 - 837.6 838 - 838.4 | | | | | | | | | |
| 856 | 861.9 | 1/30 | fault at w. contact l. contact 45° | | | | | | | | | |
| 861.9 | 863.4 | 1/30 | dyke | | | | | | | | | |
| 863.4 | 901 | 1/30 | magnetic f.g. disint good core minor dissem py. | Py | <1% | | | | | | | |
| | | | End of hole 901 DD. contractor: E Caron | | | | | | | | | |

NEW IMPERIAL MINES LIMITED
 MINING DIVISION - WHITEHORSE
 YUKON TERRITORY

Hole No. Q 72 Page No. 2

| FOOTAGE | | | ROCK CLASSIFICATION <small>EPID. DIOP. GARN. SERP. QTZ/SIL. ACTINO TREMO. CHLO. CRYSTALLINE. SHEARING. VEINS. FRACTURING. FOLIATION. GRAIN SIZE. TEXTURE</small> | MINERALIZATION | | ASSAY DATA | | | | | | |
|---------|-------|---------|--|----------------|-----|------------|-------|--------|-----|-----|------|-------|
| From | To | | | TYPE | % | SAMPLE NO. | WIDTH | RECOV. | %CU | %FE | MOLY | AU/AG |
| 222.5 | 223 | 3dg | rubble | | | | | | | | | |
| 223 | 228 | 9ab | f.g. gm dyke contacts obscured in rubble | | | | | | | | | |
| 228 | 357 | 5 | renal. white limestone, no banding | | | | | | | | | |
| 257 | 366.5 | 5/2dg | weak skarn patches in limestone | | | | | | | | | |
| 366.5 | 368 | 5 | renal white limestone | | | | | | | | | |
| 368 | 369 | 9ab/3dg | rubble | | | | | | | | | |
| 369 | 383 | 5 | renal white limestone | | | | | | | | | |
| 383 | 451 | 8a | med. gr. diorit, altered minor dissemination py slightly magnetic | py | <1% | | | | | | | |
| | | | End of hole 451 | | | | | | | | | |

NEW IMPERIAL MINES LIMITED
 MINING DIVISION - WHITEHORSE
 YUKON TERRITORY

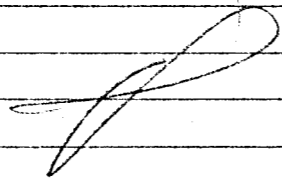
Hole No. CP.7.2 Page No.

| FOOTAGE | | ROCK CLASSIFICATION EPID. DIOP. GARN. SERP. QTZ/SIL. ACTINO TREMO. CHLO. CRYSTALLINE. SHEARING. VEINS. FRACTURING. FOLIATION. GRAIN SIZE. TEXTURE | MINERALIZATION | | ASSAY DATA | | | | | | | |
|---------|-------|---|----------------|---|------------|-------|--------|------|-----|------|--------|-------|
| From | To | | TYPE | % | SAMPLE NO. | WIDTH | RECOV. | %CU | %FE | MOLY | AU. AU | INSOL |
| 11 | 16 | | | | 54991 | 5 | 5 | | | | | |
| 16 | 21 | | | | 42 | | 5 | 0.18 | | | | |
| 21 | 26 | | | | 43 | | 5 | 0.16 | | | | |
| 26 | 31 | | | | 44 | | 5 | 0.21 | | | | |
| 31 | 36 | | | | 45 | | 5 | 0.20 | | | | |
| 38.2 | 43.2 | | | | 46 | | 5 | 0.17 | | | | |
| 43.2 | 48.2 | | | | 47 | | 5 | 0.15 | | | | |
| 48.2 | 53.2 | | | | 48 | | 5 | 0.17 | | | | |
| 53.2 | 58.2 | | | | 49 | | 5 | 0.22 | | | | |
| 58.2 | 63.2 | | | | 50 | | 5 | 0.20 | | | | |
| 63.2 | 68.2 | | | | 51 | | 5 | 0.20 | | | | |
| 68.2 | 73.2 | | | | 52 | | 5 | 0.20 | | | | |
| 73.2 | 78.2 | | | | 53 | | 5 | 0.20 | | | | |
| 78.2 | 83.2 | | | | 54 | | 5 | 0.20 | | | | |
| 83.2 | 88.2 | | | | 55 | | 5 | 0.20 | | | | |
| 88.2 | 93.2 | | | | 56 | | 5 | 0.20 | | | | |
| 93.2 | 98.2 | | | | 57 | | 5 | 0.20 | | | | |
| 98.2 | 103.2 | | | | 58 | | 5 | 0.15 | | | | |
| 103.2 | 108.2 | | | | 59 | | 5 | 0.20 | | | | |
| 108.2 | 113.2 | | | | 60 | | 5 | 0.20 | | | | |
| 113.2 | 118.2 | | | | 61 | | 5 | 0.19 | | | | |
| 118.2 | 123.2 | | | | 62 | | 5 | 0.20 | | | | |
| 123.2 | 126.4 | | | | 54963 | | 3.2 | 0.18 | | | | |

NEW IMPERIAL MINES LIMITED
 MINING DIVISION - WHITEHORSE
 YUKON TERRITORY

Hole No. 973 Page No. 2

| FOOTAGE | | | ROCK CLASSIFICATION <small>EPID. DIOP. GARN. SERP. QTZ/SIL. ACTINO TREMO. CHLO. CRYSTALLINE. SHEARING. VEINS. FRACTURING. FOLIATION. GRAIN SIZE, TEXTURE</small> | MINERALIZATION | | ASSAY DATA | | | | | | |
|---------|-------|-------|--|----------------|-----|------------|-------|--------|-----|-----|------|-------|
| From | To | | | TYPE | % | SAMPLE NO. | WIDTH | RECOV. | %CU | %FE | MOLY | AU/AG |
| 155.1 | 163.4 | 3gr | f.g. greenish skarn, patchy blebs of minoc cp good core | cp | 1% | | | | | | | |
| 163.4 | 170 | 5/2/2 | greyish fq/cg limy rock "skarnified limestone?" | | | | | | | | | |
| 170 | 381 | 8a | med. gr. altered diorite with occas small dykes and patches of weak skarn v. minor dissemin py. weakly magnetic | py | <1% | | | | | | | |
| | | | End of hole 381 | | | | | | | | | |



NEW IMPERIAL MINES LIMITED
 MINING DIVISION - WHITEHORSE
 YUKON TERRITORY

Hole No. CP 74 Page No. 5

| FOOTAGE | | | ROCK CLASSIFICATION <small>EPID. DIOP. GARN. SERP. QTZ/SIL. ACTINO TREMO. CHLO. CRYSTALLINE. SHEARING VEINS. FRACTURING. FOLIATION. GRAIN SIZE. TEXTURE</small> | MINERALIZATION | | | | ASSAY DATA | | | | |
|---------|-----|--------------------------|--|----------------|---|------------|-------|------------|-----|-----|------|-------|
| From | To | | | TYPE | % | SAMPLE NO. | WIDTH | RECOV. | %CU | %FE | MOLY | AU/AG |
| 232 | 263 | 5/32 | recrystallized in part banding generally $>70^\circ$ occasional dissolution | | | | | | | | | |
| 263 | 272 | nil | fine grained green dyke | | | | | | | | | |
| 272 | 286 | 5/32 | recrystallized reluct. banding variable $0-90^\circ$, mostly 60° | | | | | | | | | |
| 286 | 307 | 9ab ~ | dk green paper porph. dyke poor core, mostly rubble 305-307 | | | | | | | | | |
| 307 | 436 | 5/32 ~ ~ ~ ~ | recrystallized white limestone banding generally $60^\circ-70^\circ$ occasionally 90° , very variable 340 - 342 382 - 385 rubble of dyke 9ab 376 - 376.8 9ab 454 - 455 461 - 464 363 - 386 graphite 20% | | | | | | | | | |

NEW IMPERIAL MINES LIMITED
 MINING DIVISION - WHITEHORSE
 YUKON TERRITORY

Hole No. CP74 Page No. 5

| FOOTAGE | | ROCK CLASSIFICATION <small>EPID. DIOP. GARN. SERP. QTZ/SIL. ACTINO. TREMO. CHLO. CRYSTALLINE. SHEARING VEINS. FRACTURING. FOLIATION. GRAIN SIZE, TEXTURE</small> | MINERALIZATION | | | ASSAY DATA | | | | | | |
|---------|-----|--|----------------|---|------------|------------|--------|-----|-----|------|-------|-------|
| From | To | | TYPE | % | SAMPLE NO. | WIDTH | RECOV. | %CU | %FE | MOLY | AU/AG | INSOL |
| 496 | 501 | <p>tabes dark green f.g. dyle with 1/4 - 1/2" veins of felpar (same as BLE 45 310')</p> <p>core is mostly rubble, and badly faulted.</p> <p>Drilled by Coron D1 to core end of hole 501 abandoned due to faulting & sticking after several inches.</p> | | | | | | | | | | |

ANNEX L

Summary of Drilling Costs

| | |
|------------------------------|--------------------|
| Invoice Apr. 5/74 Annex L-1 | \$ 5,005.70* |
| Invoice May 2/74 Annex L-2 | 19,039.15 |
| Invoice June 3/74 Annex L-3 | 22,037.75 |
| Invoice July 3/74 Annex L-4 | 14,297.85 |
| Invoice July 16/74 Annex L-5 | <u>3,157.43</u> |
| TOTAL | <u>\$58,532.18</u> |

* applied for under 1973-74 Program

ANNEX M

Drill Supervision & Core Logging

| | |
|--|--------------------|
| A. Hureau* Apr. 1 - July 8 | |
| 40% of time to Project @ 1325/mo | \$ 1,727.80 |
| G. MacDonald* May 1 - July 8 | |
| 30% of time to project @ 900/mo | <u>610.20</u> |
| TOTAL | 2,338.00 |
| Fringe benefits, medical, Life Ins., U.I.C., C.P.P., Holiday Travel Fare. | |
| 20% of Total | <u>467.60</u> |
| TOTAL | <u>\$ 2,805.60</u> |

* Company employees

ANNEX N

Cost Magnetometer Surveys

| | |
|---------------------------------|----------------|
| Tavern Lake Area (BLC 46) Fig 9 | |
| A. Hureau 2 days 1325 x 2/21.6 | \$122.69 |
| Area BLC 47 & 48 Fig 10 | |
| A. Hureau 1 day 1325 x 1/21.6 | 61.34 |
| Area CP 72-73 Fig 12 | |
| G. McDonald 1 day 900 x 1/21.6 | 41.67 |
| Area West CP 72-73 Fig 13 | |
| G. McDonald 1 day 900 x 1/21.6 | 41.67 |
| Area CP 71 Fig 11 | |
| G. McDonald 1 day 900 x 1/21.6 | <u>41.67</u> |
| Total | 309.04-6- |

Annex N Cont'd

| | |
|--------------------------------------|------------------|
| 20% overhead, C.P.P., U.I.C., Travel | |
| fare, Med. Ins., Life Ins. | \$ <u>61.01</u> |
| TOTAL | \$ <u>370.85</u> |

ANNEX O

Cost of IP Survey

| | |
|---|--------------------|
| Invoice July 11/74 O-1 | 2,420.00 |
| Eric Johnson* Assistant 6 days @ \$990/mo | 277.20 |
| Darwin Allen* Assistant 6 days @ \$765/mo | 214.20 |
| Vehicle @ \$10.00/day | 60.00 |
| Lodging K. Hendry (operator) | |
| Taku Hotel Invoice O-2 | 119.00 |
| 20% overhead for E. Johnson, & D. Allen | |
| Medical Ins., Life Ins. U.I.C., C.P.P. | <u>98.28</u> |
| TOTAL | \$ <u>3,188.68</u> |

* Company employees

ANNEX P

Line Cutting Costs

Fig 14

| | |
|--------------------------------|-----------|
| 3 line miles * @ 150/line mile | \$ 450.00 |
| Cut by: A. Hureau* | |
| G. McDonald | |
| E. Johnson | |
| D. Allen | |

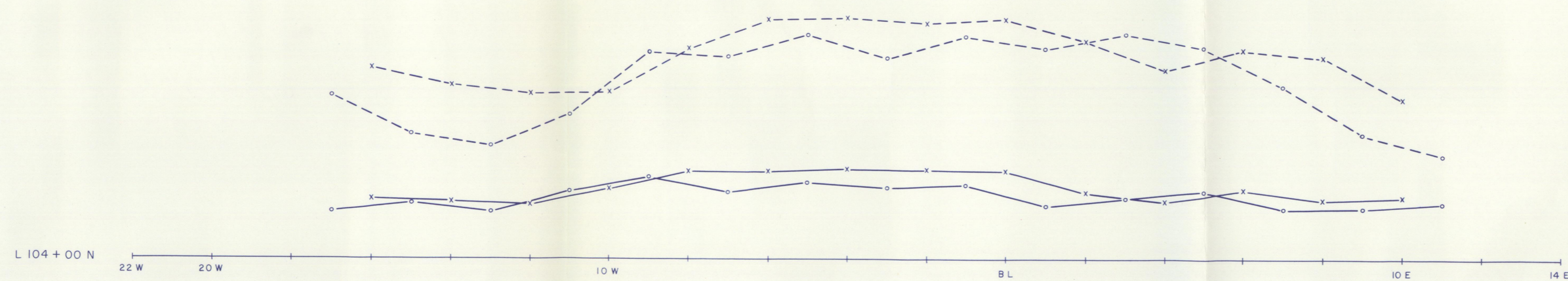
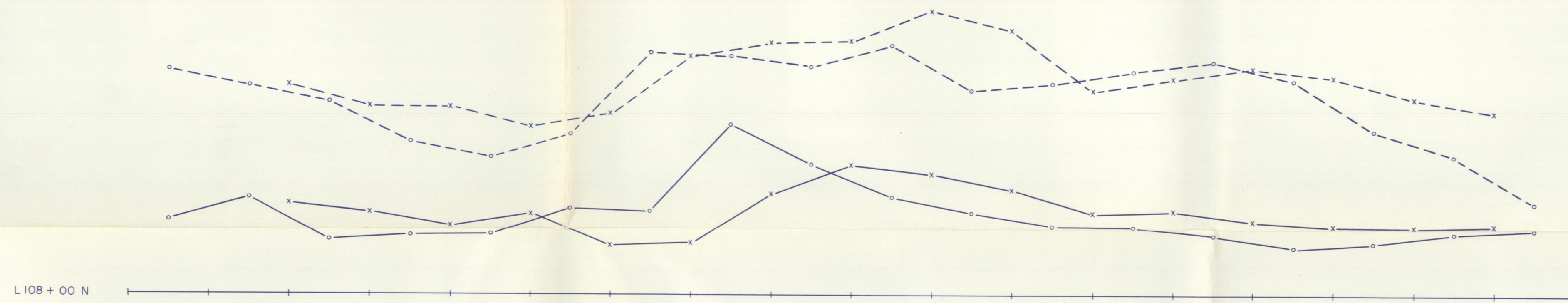
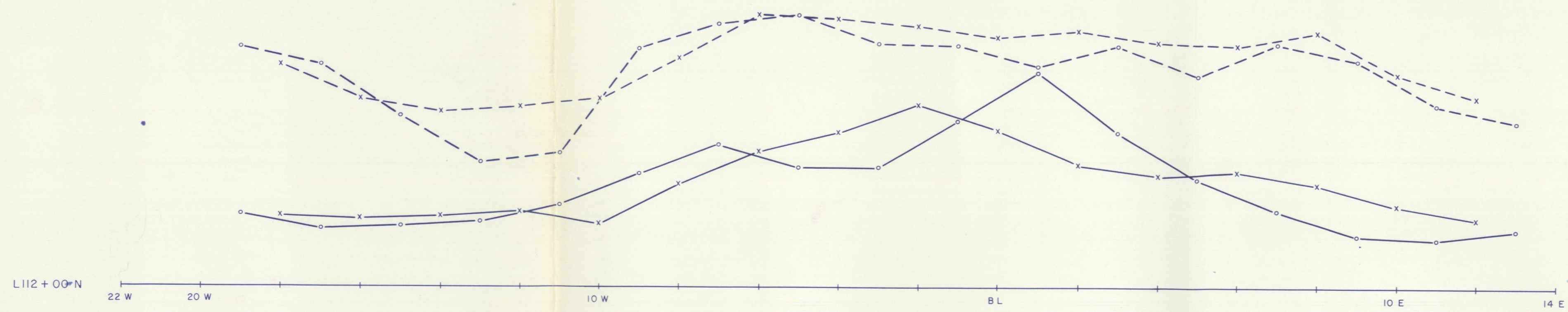
* Company employees

TOTAL \$ 450.00

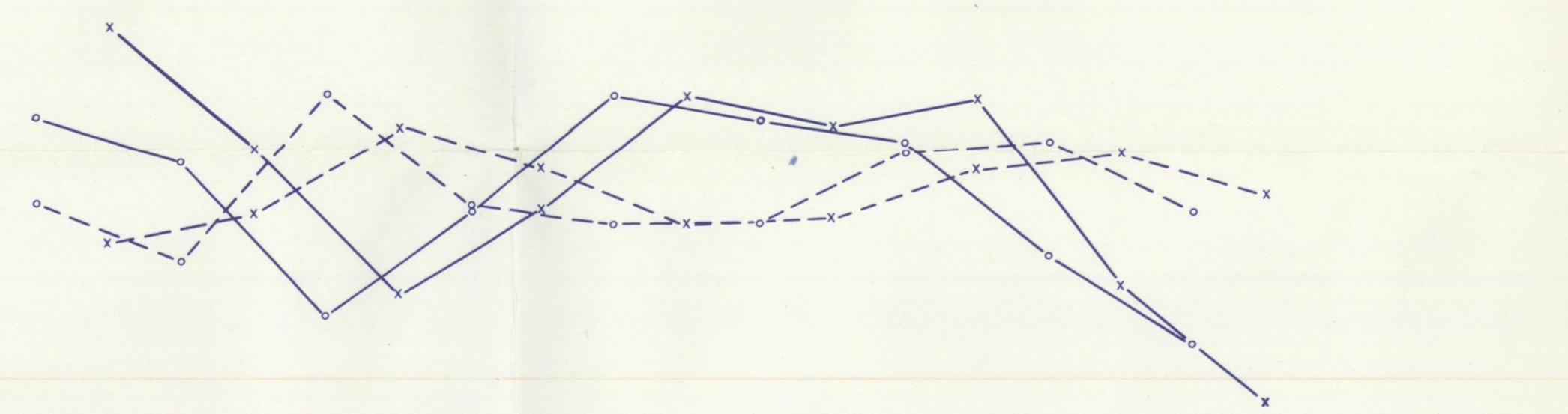
ANNEX Q

Construction of Roadway over Cowley Creek to provide access for 1974
Drill Program Cowley Park.

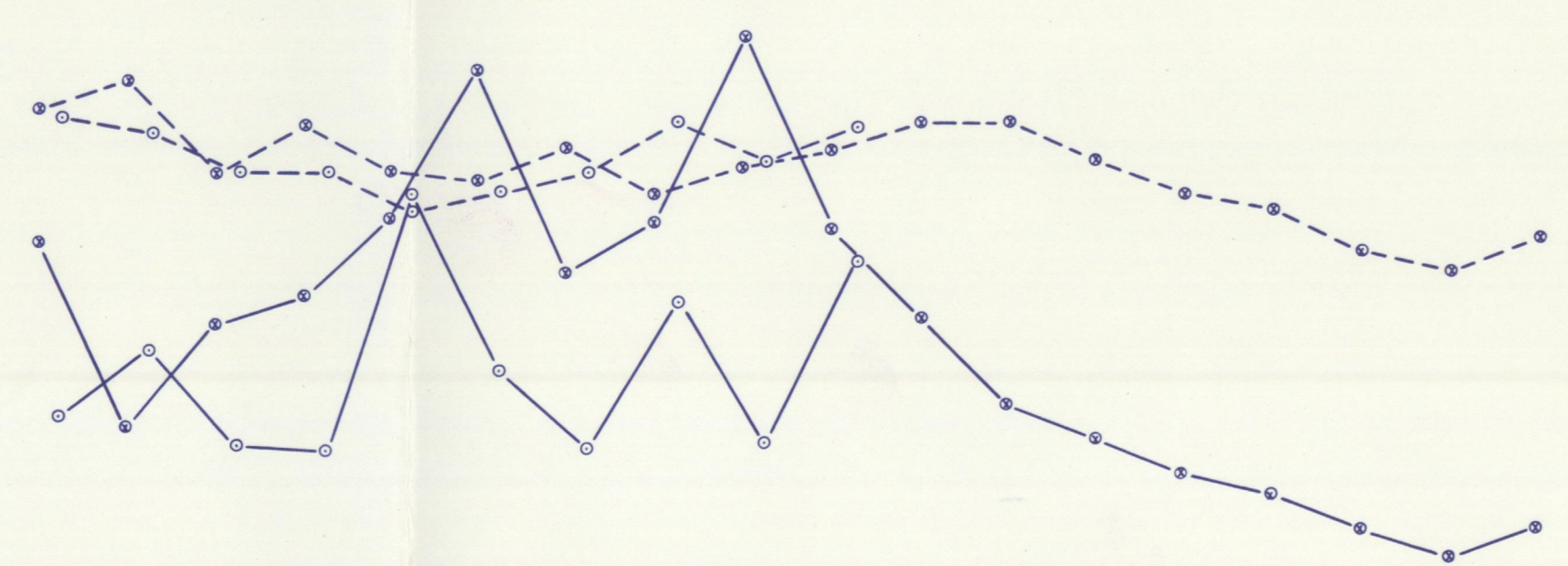
| | |
|---|------------------|
| 2 Galvanized culverts | \$ 300.00 |
| 966 Loader 4 hrs. @ \$35/hr. | 140.00 |
| HIAB 2 hrs. @ \$15/hr. | 30.00 |
| 3 Labourers for 4 hrs. ea. @ \$4.39/hr. | <u>52.68</u> |
| TOTAL | \$ <u>522.68</u> |



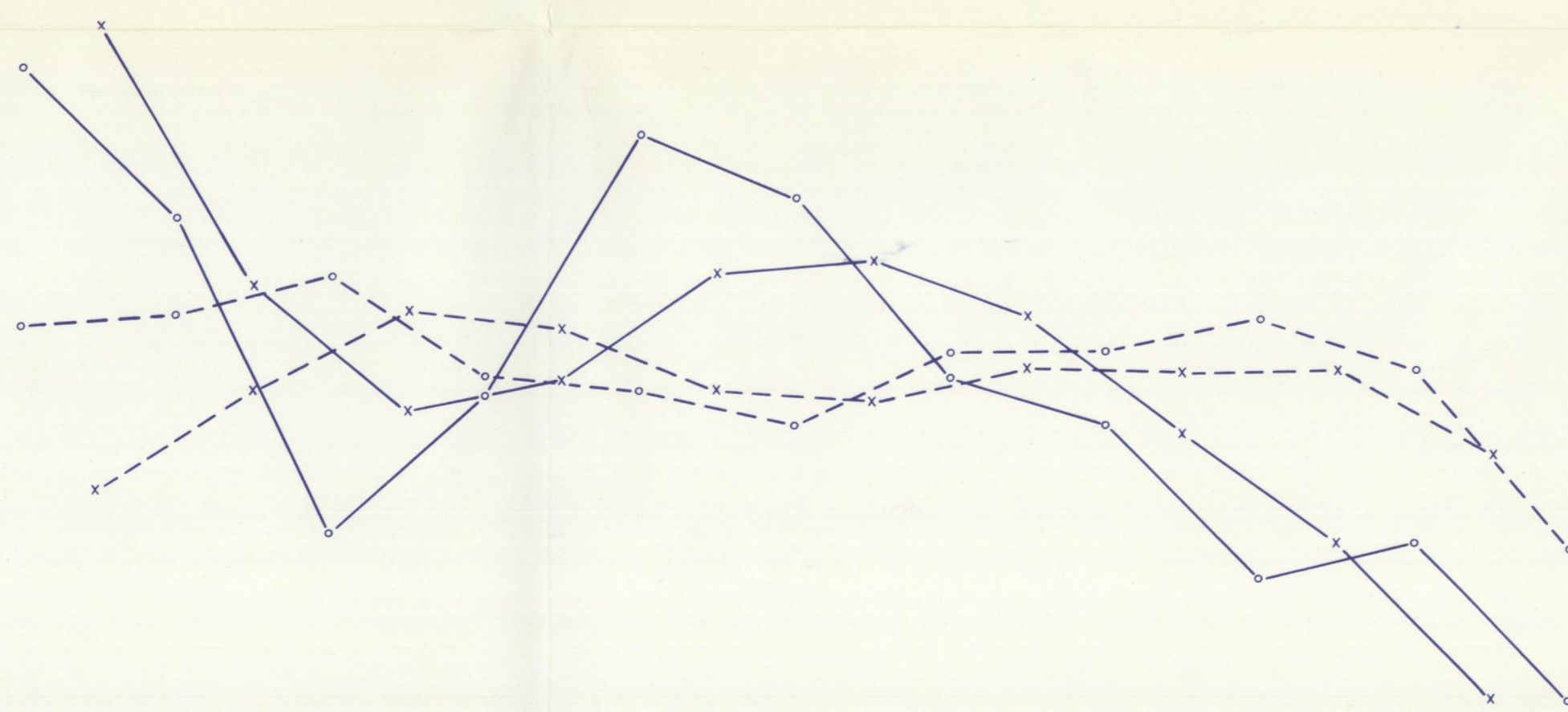
NOTE: LINES NOT SPACED TO SCALE



L 60 + 00 N 38 W 30 W 20 W 16 W

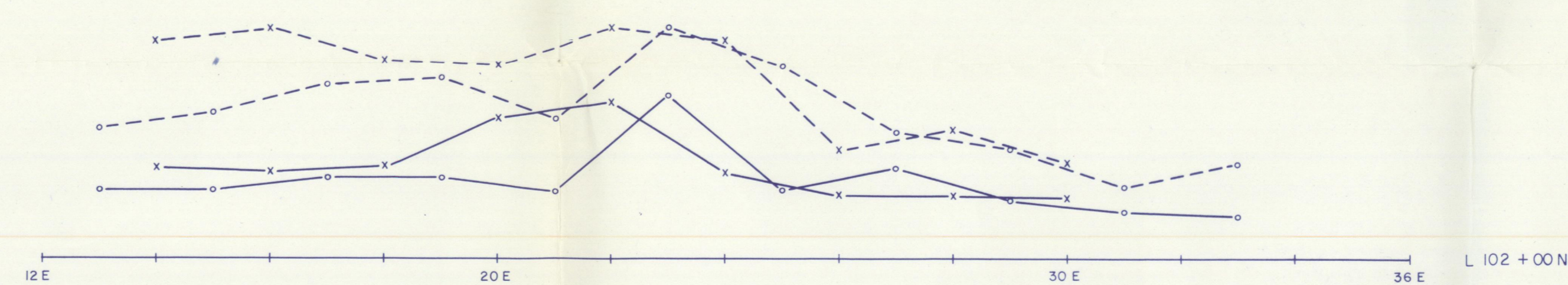


L 58 + 00 N

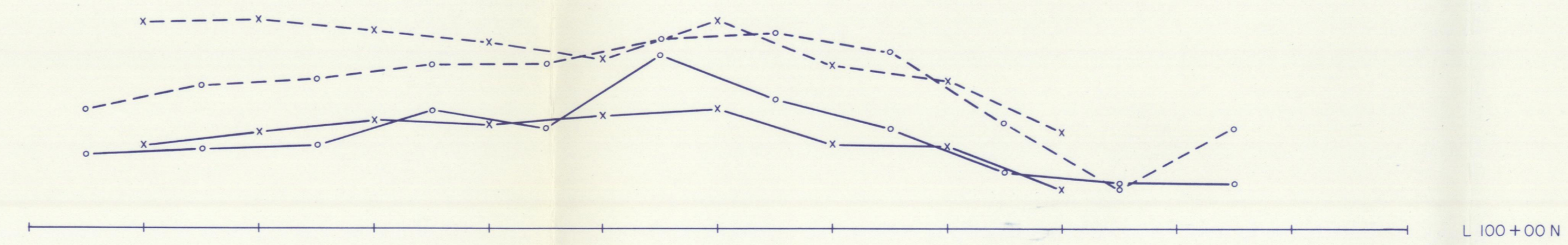


L 56 + 00 N 38 W 30 W 20 W 16 W

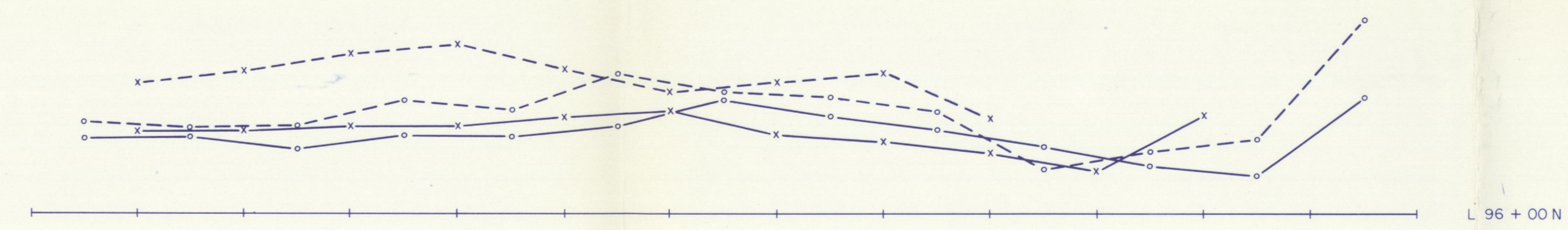
CHARGEABILITY SCALE (MILLISECONDS)
RESISTIVITY SCALE (OHM METERS)



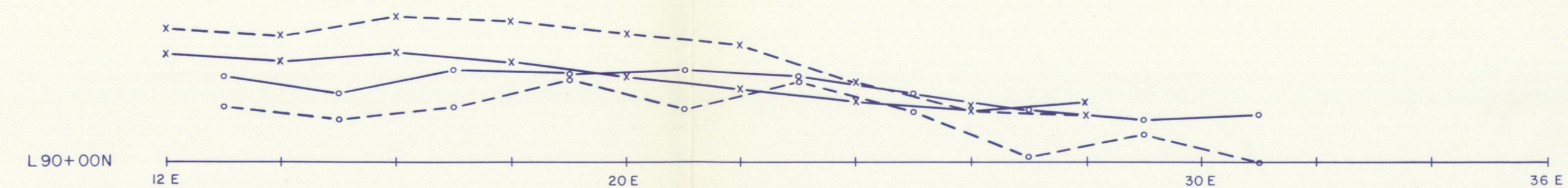
L 102 + 00 N



L 100 + 00 N



L 96 + 00 N



L 90 + 00 N

LEGEND
ELECTRODE CONFIGURATION 3 ARRAY
ELECTRODE SPACING AS SHOWN
CHARGEABILITY 10 MILLISECONDS
RESISTIVITY 100 OHM METERS
SCALE
APPARENT CHARGEABILITY 10 MILLISECONDS
APPARENT RESISTIVITY 100 OHM METERS
NOTE: LINES NOT SPACED TO SCALE



| | | |
|---------------------------------------|-----------------|-----------|
| NEW IMPERIAL MINES LTD. | | |
| WHITEHORSE Y.T. | | |
| WAR EAGLE GRID - PROFILE PRESENTATION | | |
| DR BY | APP'D BY | REVISIONS |
| DATE | SCALE 1" = 200' | |
| REF.No. | DWG. No. | |

